



MIDWEST WIRELINE

DUAL INDUCTION LOG

Company Talon Group, LLC
 Well Roger 1-19
 Field Hiney
 County Lane State Kansas

Company Talon Group, LLC
 Well Roger 1-19
 Field Hiney
 County Lane
 State Kansas

Location: API #: 15-101-22661-00-00
 2002 FSL 1136 FEL
 SEC 20 TWP 19S RGE 28W
 Permanent Datum Ground Level Elevation 2790
 Log Measured From Kelly Bushing
 Drilling Measured From Kelly Bushing
 Other Services
 CNL CDL
 MEL
 Elevation
 K.B. 2800
 D.F.
 G.L. 2790

Date	11/4/2021
Run Number	One
Depth Driller	4660
Depth Logger	4658
Bottom Logged Interval	4657
Top Log Interval	250
Casing Driller	8:625 @ 267
Casing Logger	262
Bit Size	7.875
Type Fluid in Hole	Chemical
Salinity, ppm CL	3500
Density / Viscosity	9.5 60
pH / Fluid Loss	11.0 8.8
Source of Sample	FLOWLINE
Rm @ Meas. Temp	.3 @ 55
Rmt @ Meas. Temp	.23 @ 55
Rmc @ Meas. Temp	.41 @ 55
Source of Rmf / Rmc	CHARTS
Rm @ BHT	.22 @ 123
Operating Rig Time	3.5 Hours
Max Rec. Temp. F	123
Equipment Number	P-24
Location	HAYS
Recorded By	D Schmidt
Witnessed By	Vern Schrag
	C McLaughlin

<<< Fold Here >>>

All interpretations are opinions based on inferences from electrical or other measurements and Midwest Wireline LLC cannot and does not guarantee the accuracy or correctness of any interpretation, and Midwest Wireline LLC will not be liable or responsible for any loss, costs, damages, or expenses incurred or sustained by anyone resulting from any interpretation made by any of our officers, agents or employees.

Comments

N/A DENOTES NOT AVAILABLE OR NON-APPLICABLE.

Dighton
 6 South, 1 East, 1/2 South
 West into

Log Measured From: Kelly Bushing Ft. Above Permanent Datum

THANK YOU FOR USING MIDWEST WIRELINE LLC
 785-625-3858

Your Midwest Wireline Crew

Engineer: D Schmidt
 Operator:
 Operator:
 Operator:

This Log Record Was Witnessed By

Primary Witness: Vern Schrag
 Secondary Witness:
 Secondary Witness:
 Secondary Witness:

Sensor	Offset (ft)	Schematic	Description	Length (ft)	O.D. (in)	Weight (lb)
GR	33.00		GR-M&W (233-M&W)	3.00	3.50	50.00
CNLSC CNSSC	29.90 29.15		CNT-M&W (207-MW)	5.50	3.50	100.00
LSD DCAL SSD	20.85 20.83 20.35		CDL-M&W (934-226)	8.50	4.00	250.00
RLL3F RLL3	15.80 15.80		DIL-PSI HIGH TEMP (952-828)	18.50	3.50	220.00
CILD	8.00					
CILM	4.70					
SP	0.20					

Dataset: talon_roger 1-19.db: field/well/stack/pass3.1
 Total length: 35.50 ft
 Total weight: 620.00 lb
 O.D.: 4.00 in

Log Variables

DatabaseC:\ProgramData\Warrior\Data\talon_roger 1-19.db
 Dataset field/well/stack/pass3.1/_vars_

Top - Bottom

A	BOREID in	BOTTEMP degF	CASEOD in	CASETHCK in	FLUIDDEN g/cc	M	MATRXDEN g/cc
1	7.875	123	5.5	0	1	2	2.71
NPORSEL	PERFS	SNDERR mmho/m	SNDERRM mmho/m	SPSHIFT mV	SRFTEMP degF	SZCOR	TDEPTH ft
Limestone	0	0	0	140	55	Off	4658

Variable Description

A : Cement Factor (a)
 BOREID : Borehole I.D.
 BOTTEMP : Bottom Hole Temperature
 CASEOD : Casing O.D.
 CASETHCK : Casing Thickness
 FLUIDDEN : Fluid Density
 M : Cement Exp (m)
 MATRXDEN : Matrix Density

NPORSEL : Neutron Porosity Curve Select
 PERFS : Perforation Flag
 SNDERR : Deep Sonde Error Correction
 SNDERRM : Medium Sonde Error Correction
 SPSHIFT : S.P. Baseline Offset
 SRFTEMP : Surface Temperature
 SZCOR : CN Size Cor. ?
 TDEPTH : Total Depth

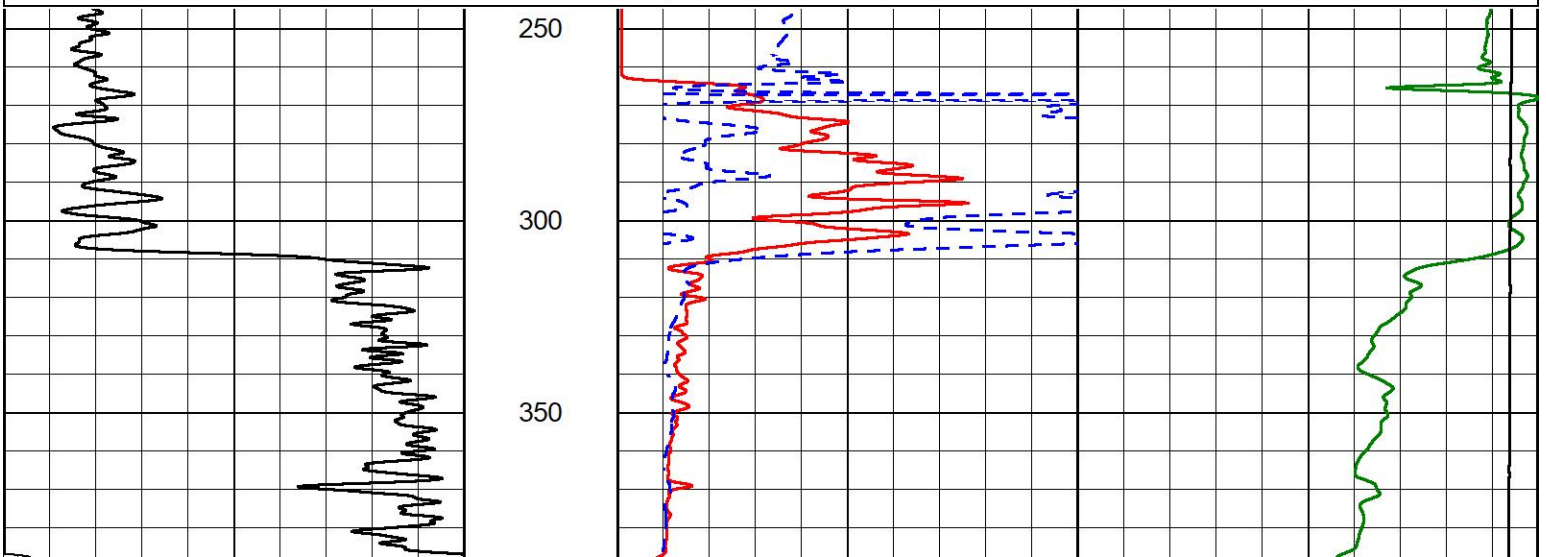


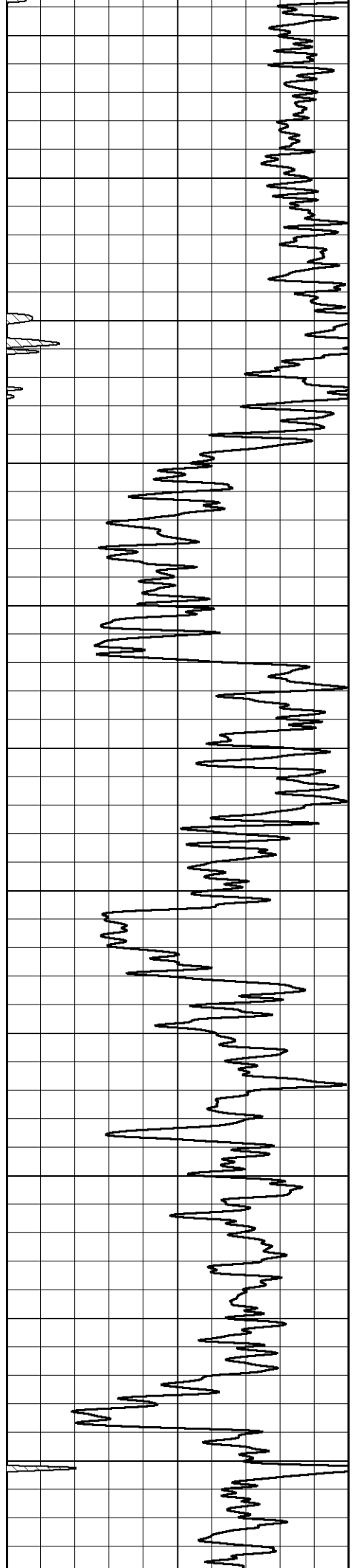
2" SCALE RESISTIVITY

MAIN PASS

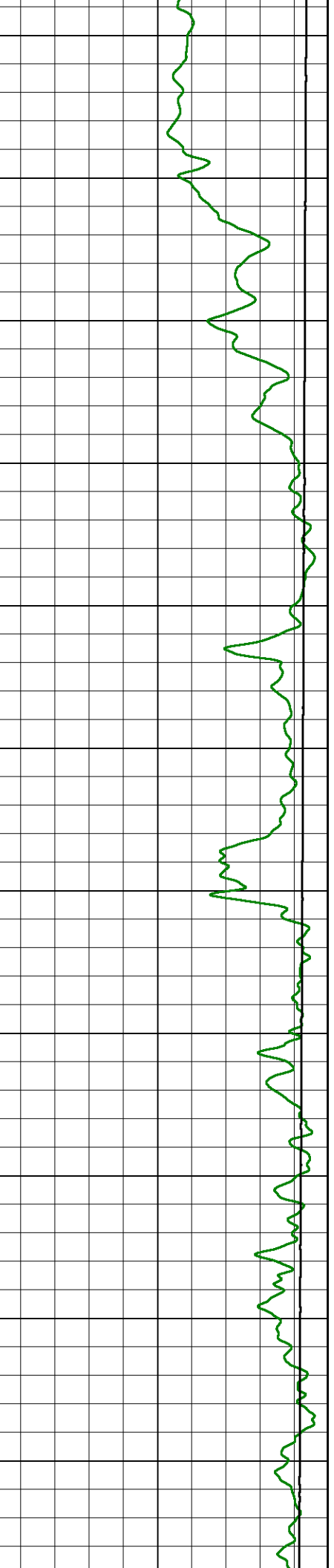
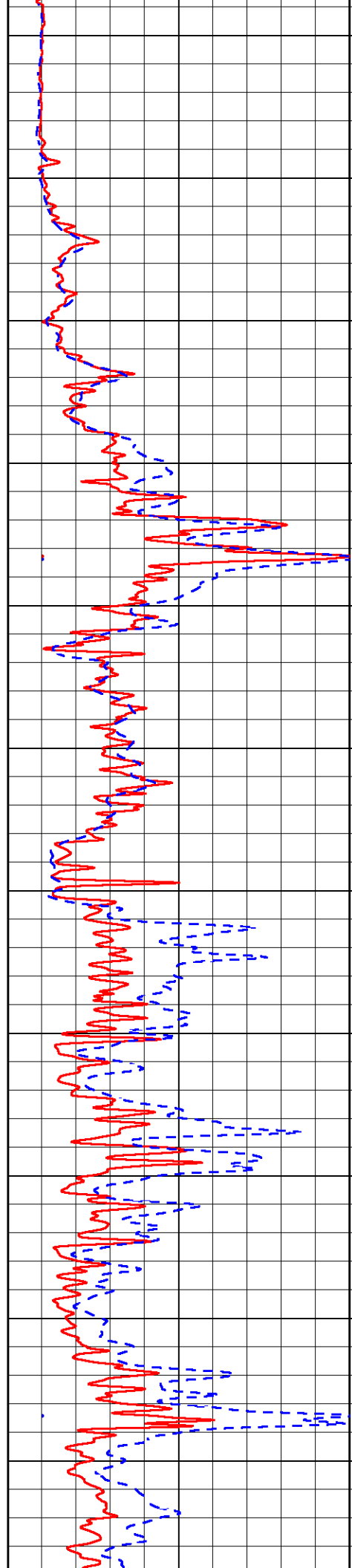
Database File talon_roger 1-19.db
 Dataset Pathname stack/pass5.1
 Presentation Format _dil2in
 Dataset Creation Thu Nov 04 06:08:50 2021
 Charted by Depth in Feet scaled 1:600

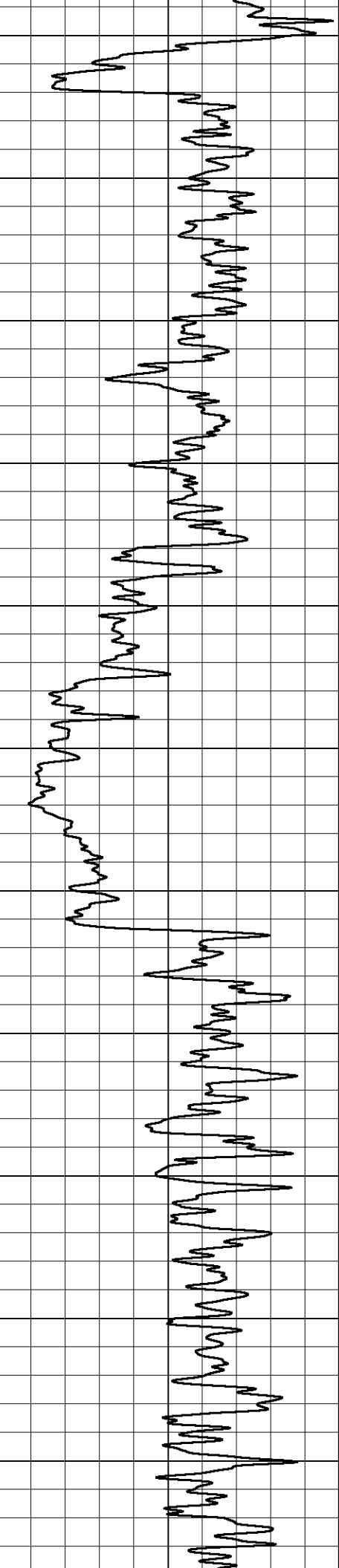
0	Gamma Ray (GAPI)	150	1000	Conductivity (mmho/m)	0
			15000	Line Tension (lb)	0
0	Shallow Resistivity (Ohm-m)	50			
0	Deep Resistivity (Ohm-m)	50			
	Shallow Resistivity				
50	(Ohm-m)	200			
50	Deep Resistivity (Ohm-m)	200			



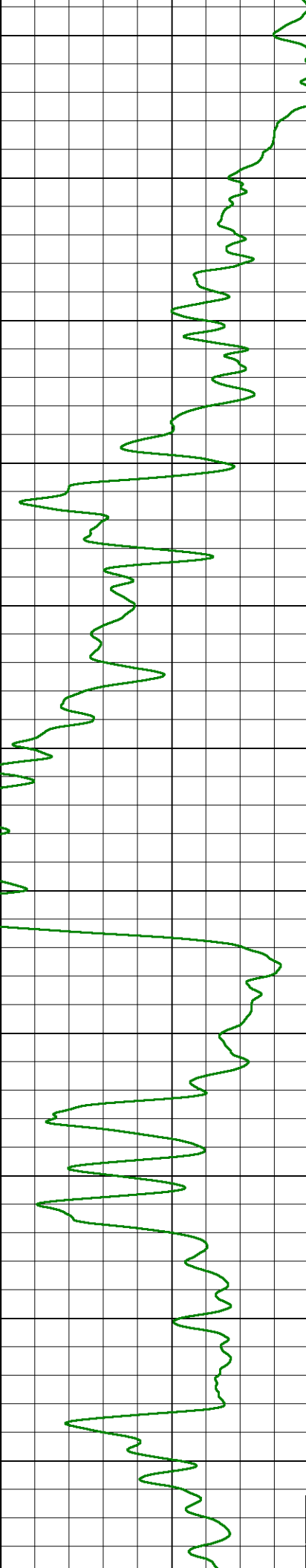
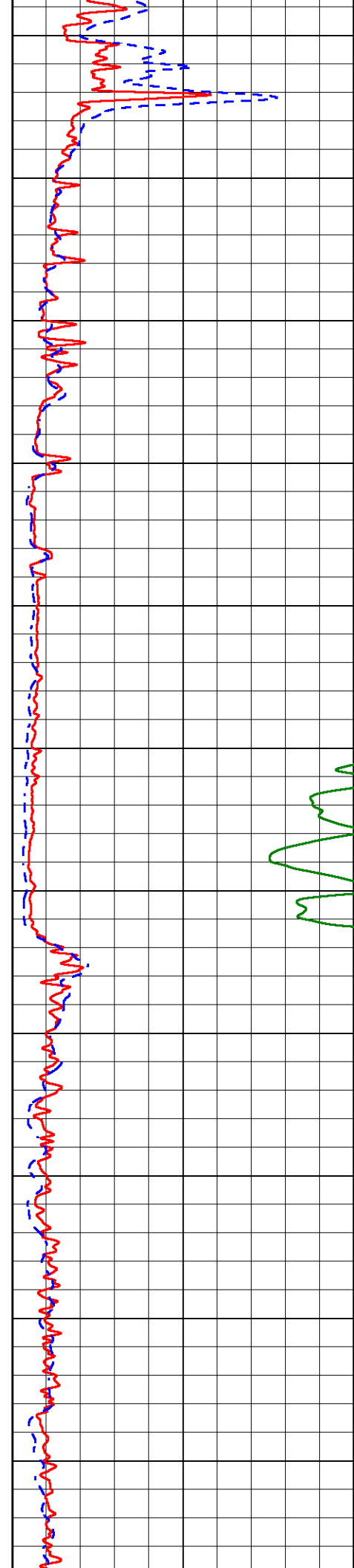


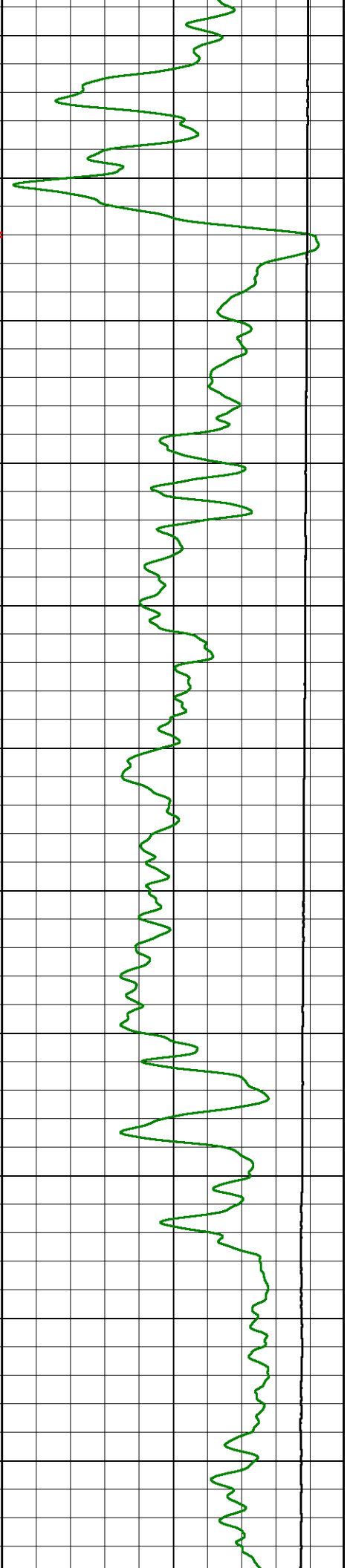
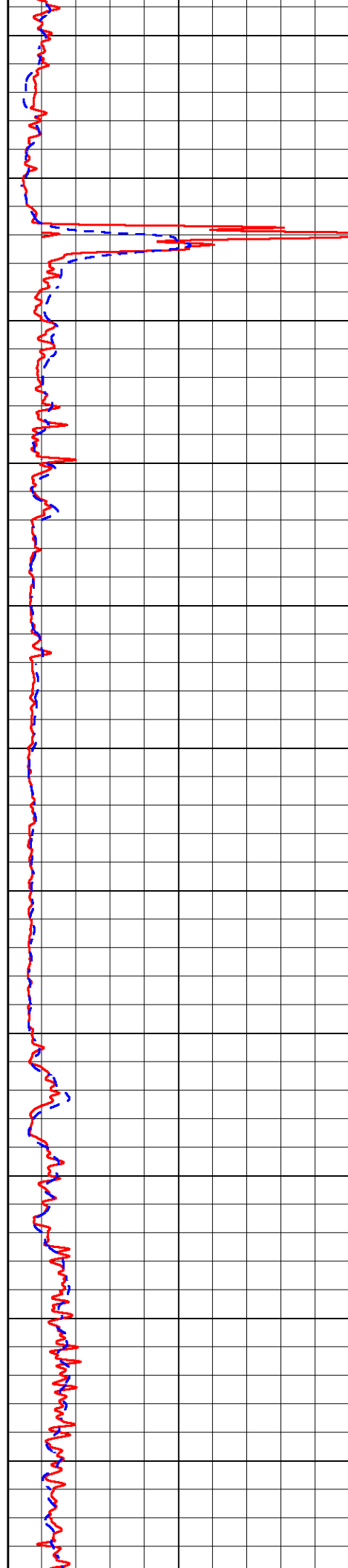
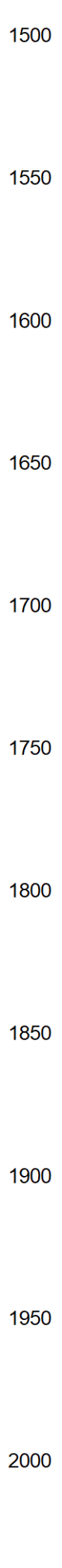
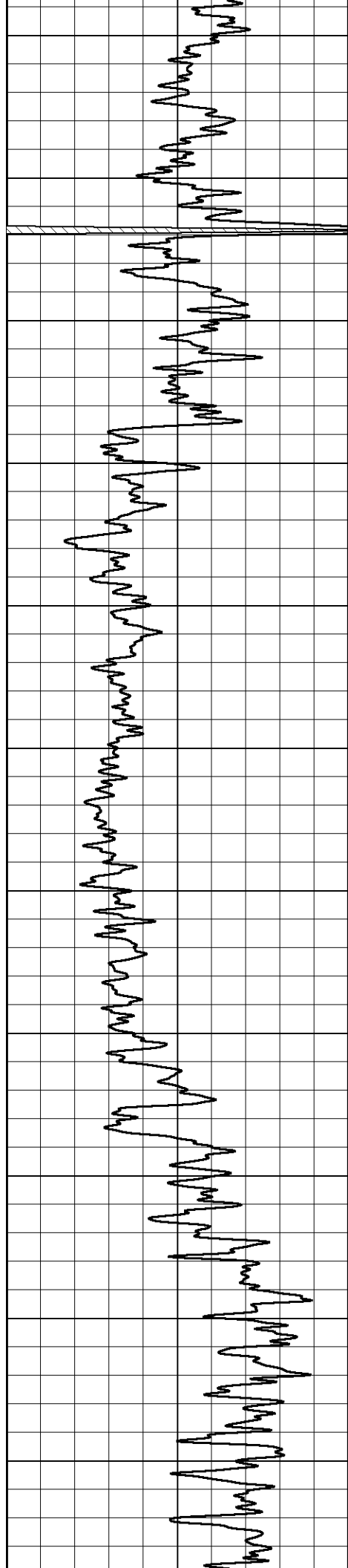
400
450
500
550
600
650
700
750
800
850
900

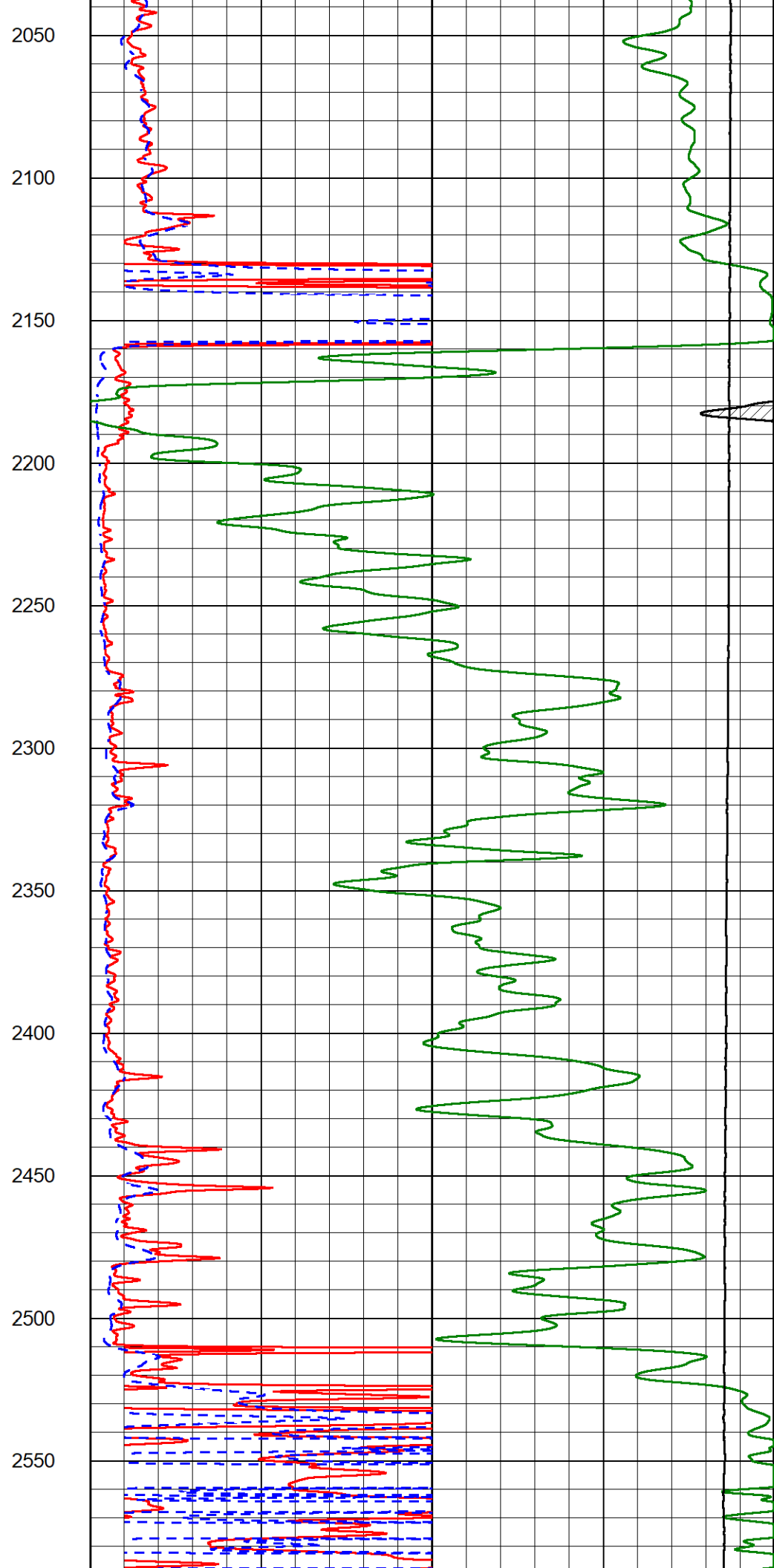
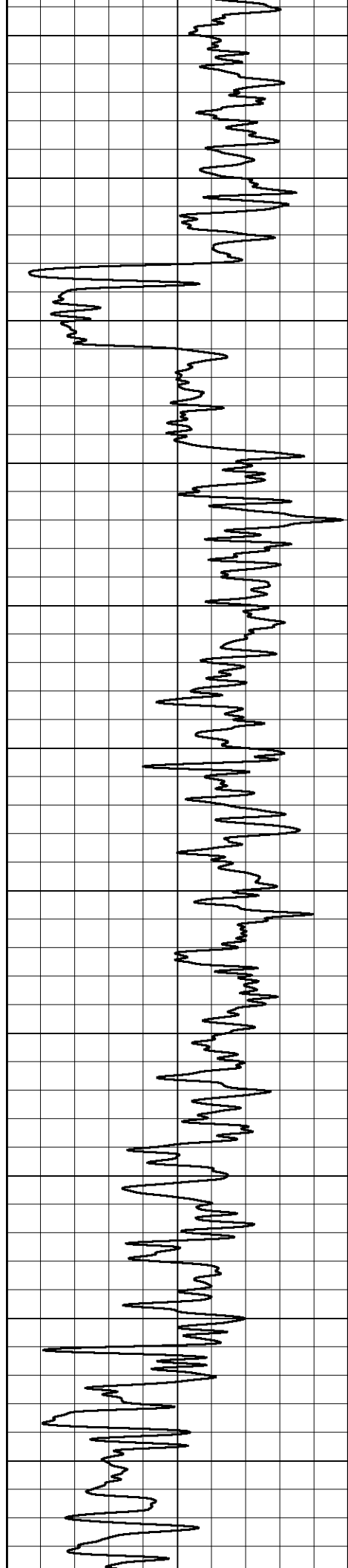


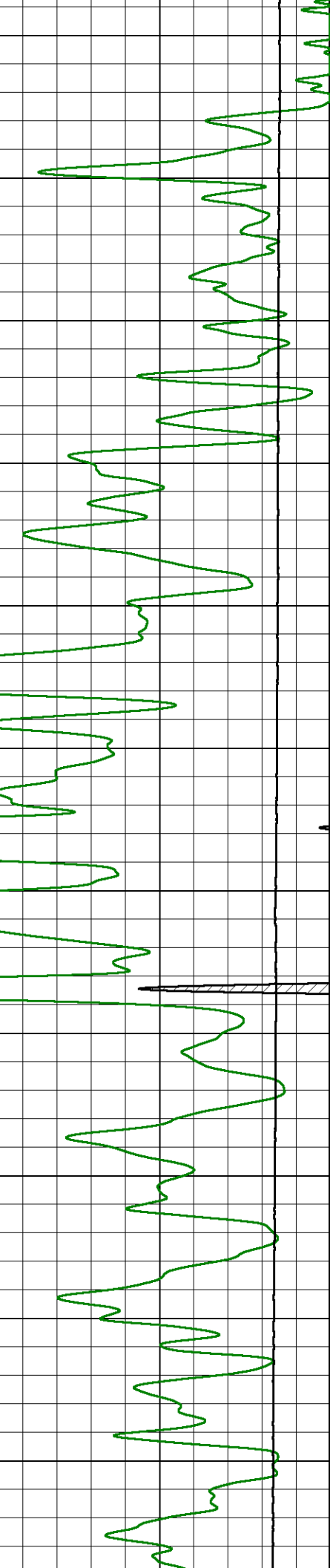
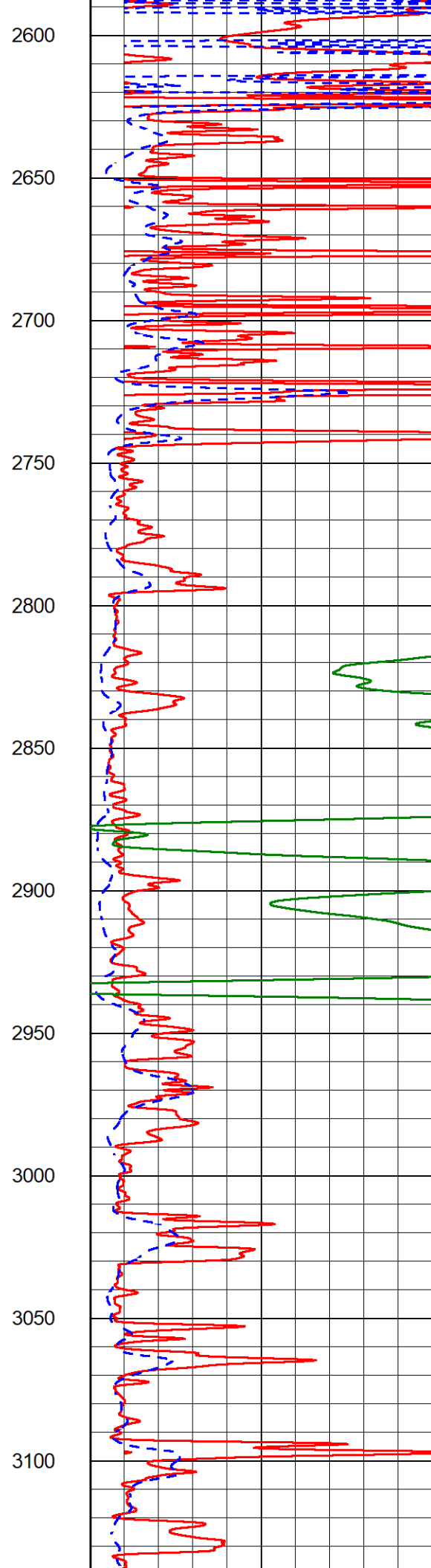
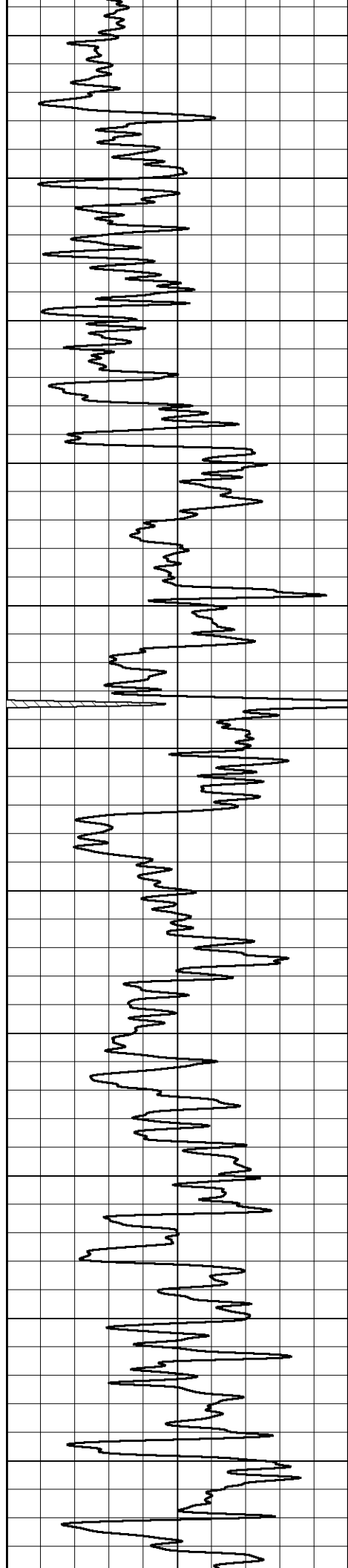


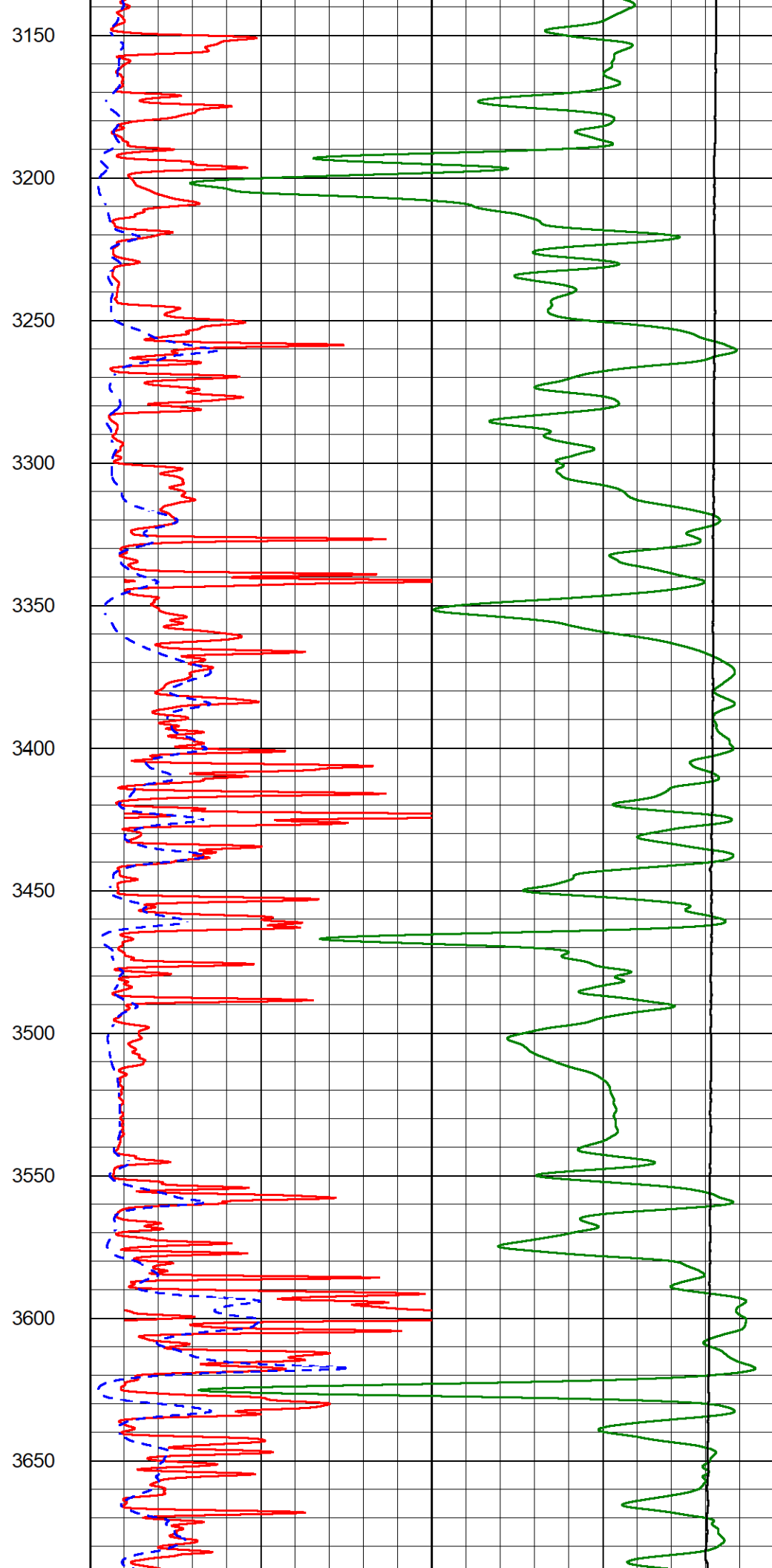
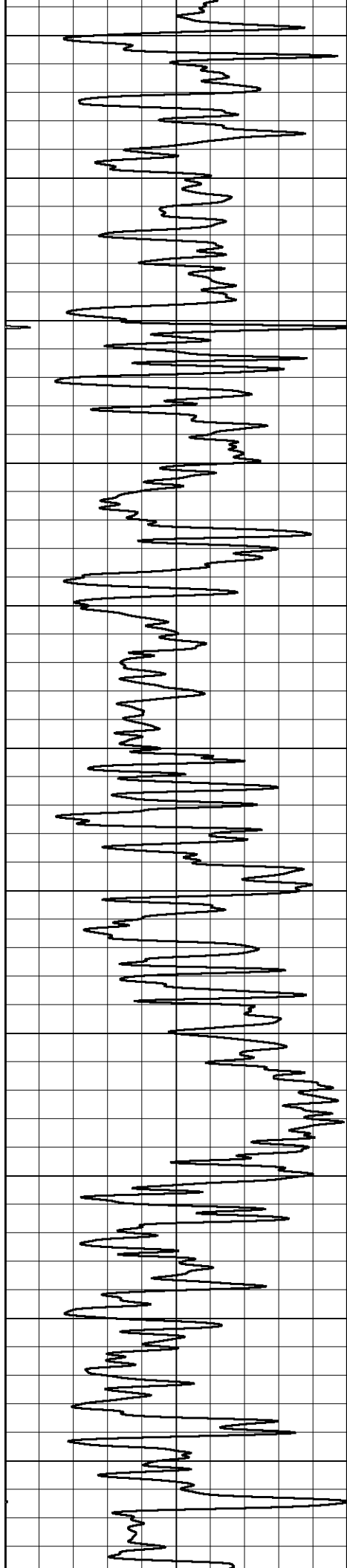
950
1000
1050
1100
1150
1200
1250
1300
1350
1400
1450

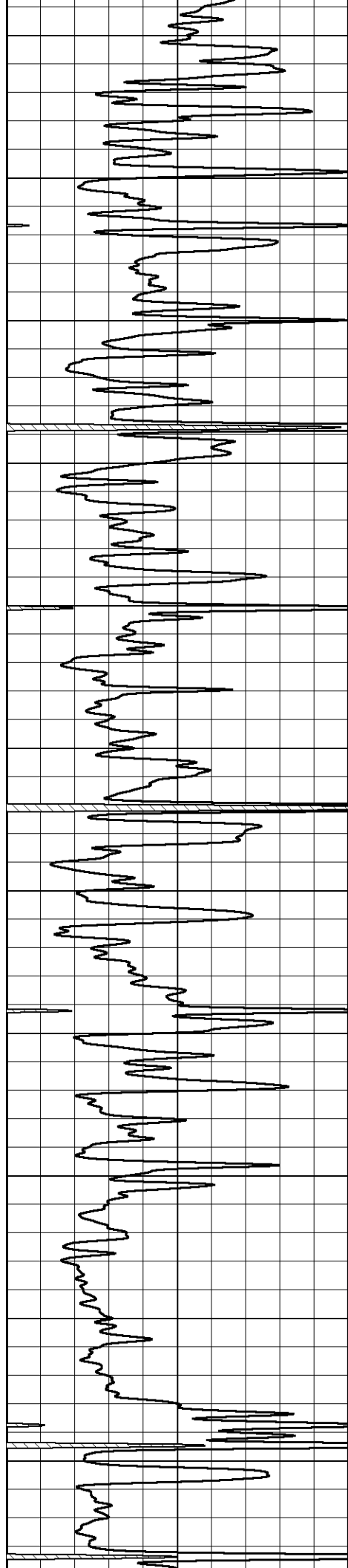












3700

3750

3800

3850

3900

3950

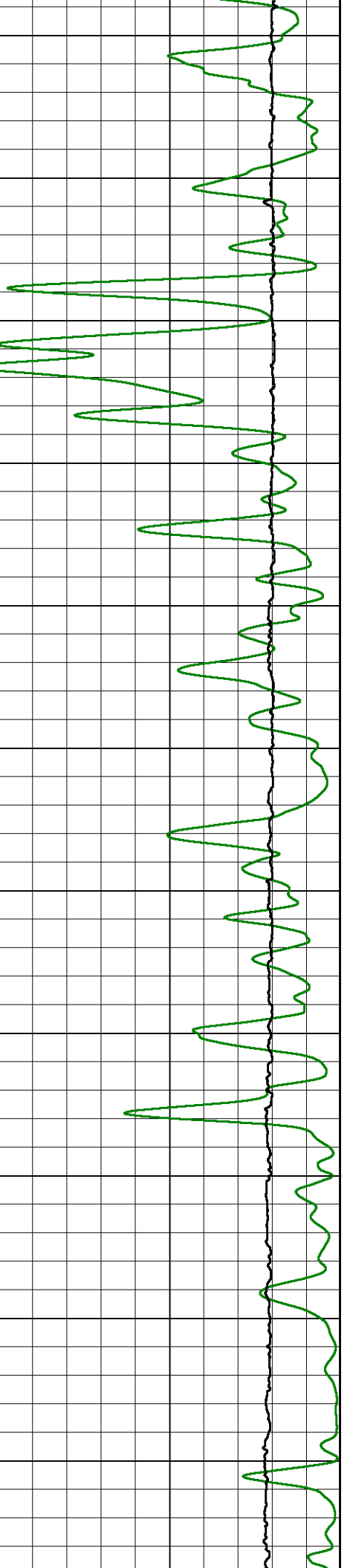
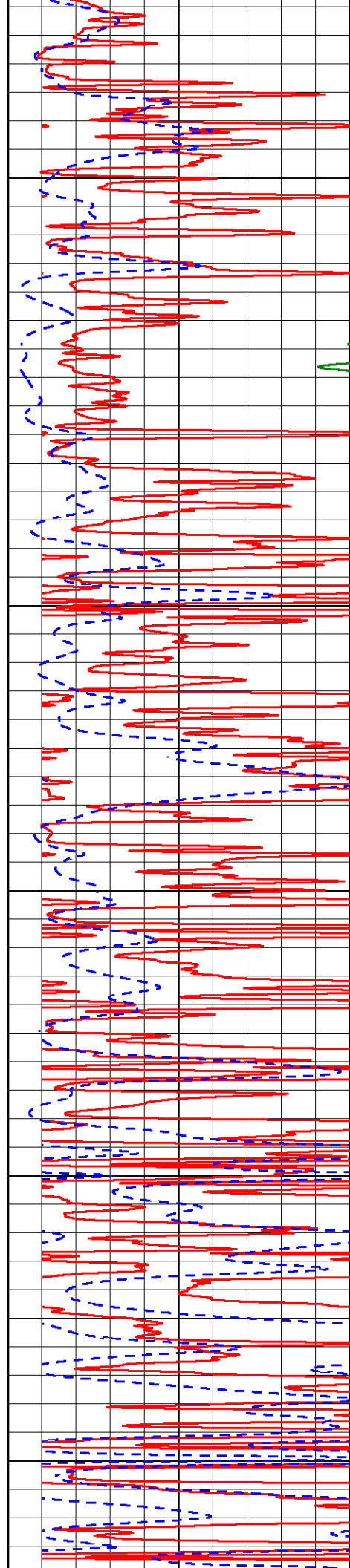
4000

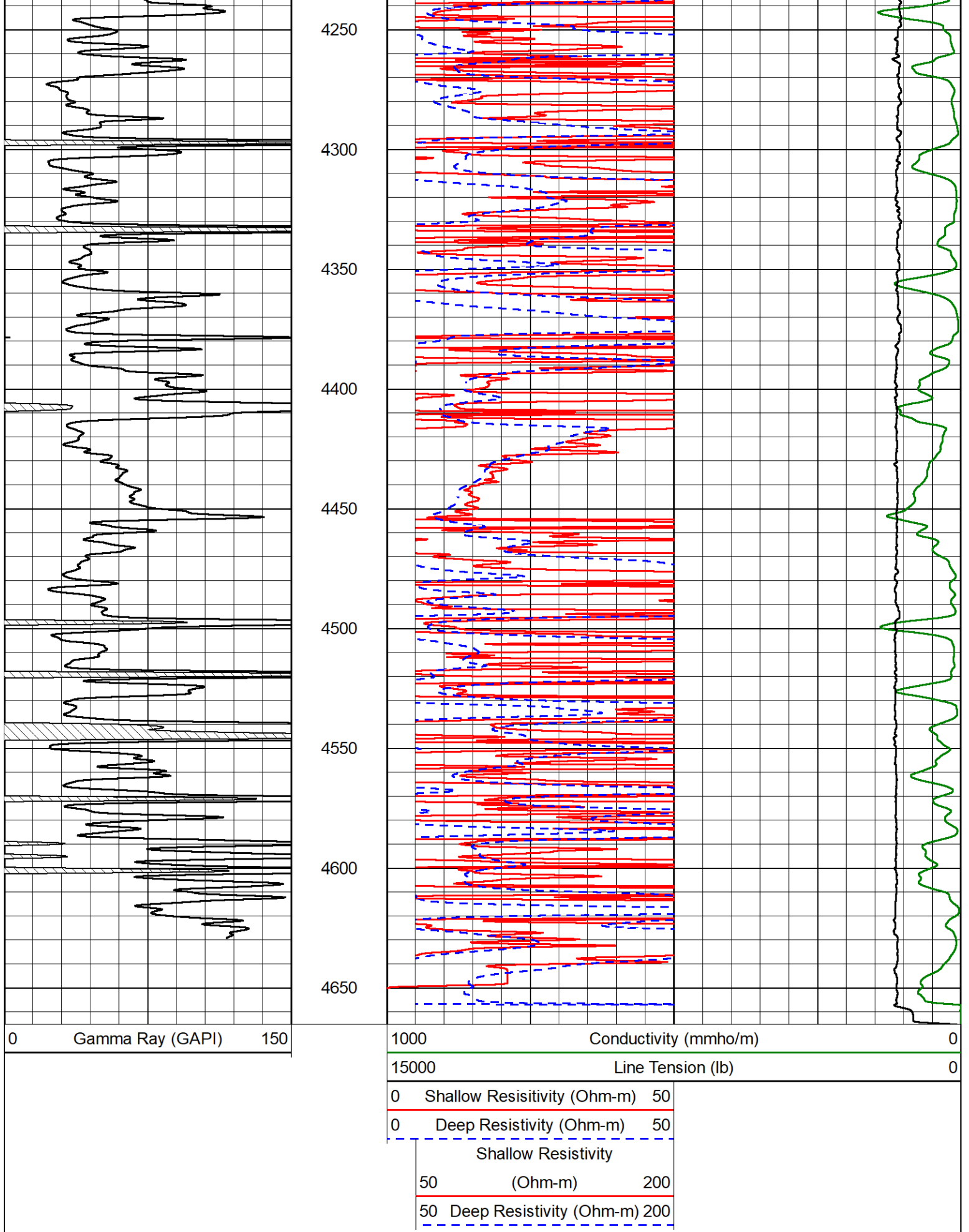
4050

4100

4150

4200





ANHYDRITE SECTION



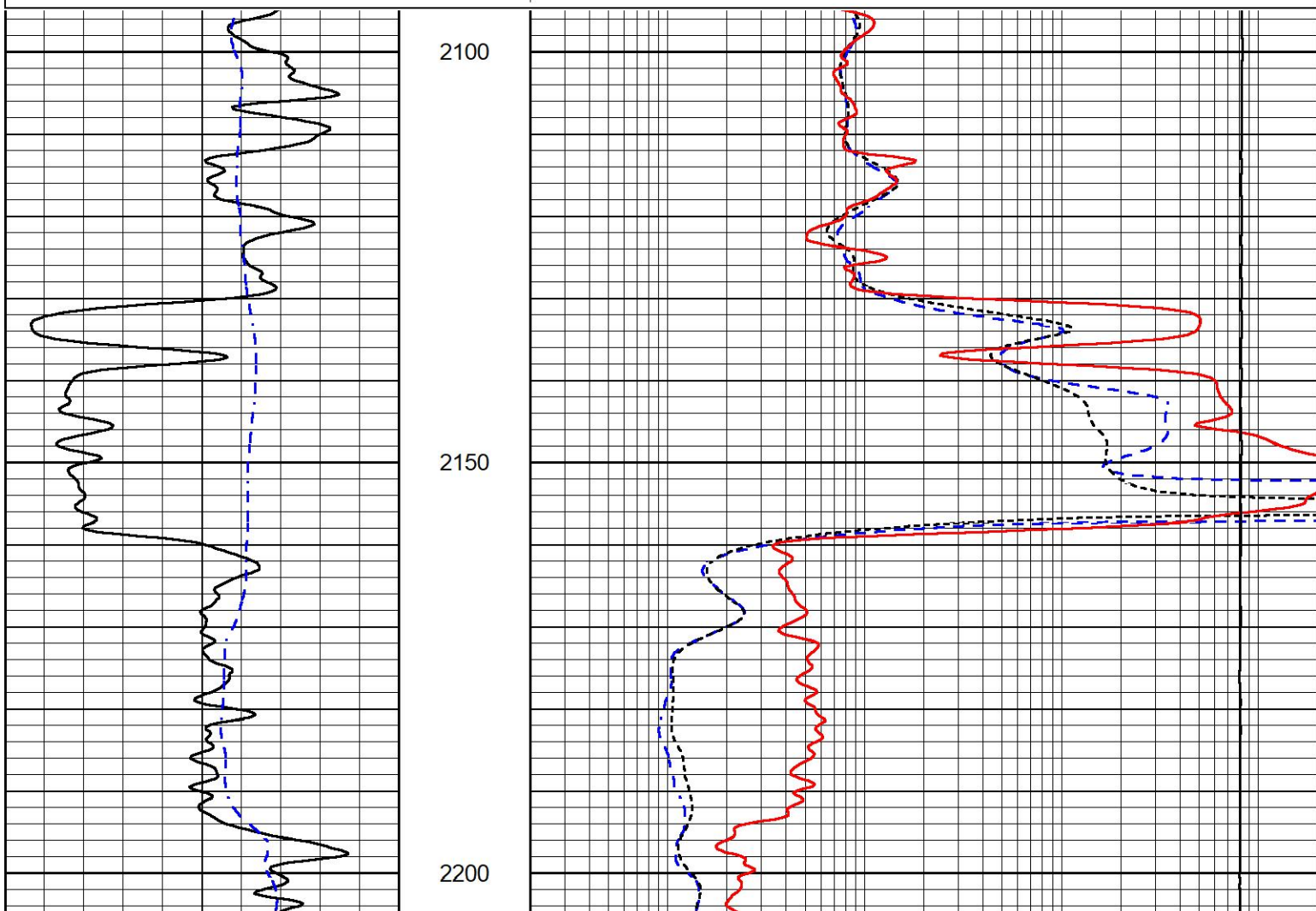


MAIN PASS

Database File talon_roger 1-19.db
 Dataset Pathname stack/pass6.1
 Presentation Format _dil
 Dataset Creation Thu Nov 04 06:09:25 2021
 Charted by Depth in Feet scaled 1:240

0 Gamma Ray (GAPI) 150
 -200 SP (mV) 0

0.2 Deep Resistivity (Ohm-m) 2000
 0.2 Medium Resistivity (Ohm-m) 2000
 0.2 Shallow Resistivity (Ohm-m) 2000
 10000 Line Tension (lb) 0



0 Gamma Ray (GAPI) 150
 -200 SP (mV) 0

0.2 Deep Resistivity (Ohm-m) 2000
 0.2 Medium Resistivity (Ohm-m) 2000
 0.2 Shallow Resistivity (Ohm-m) 2000
 10000 Line Tension (lb) 0



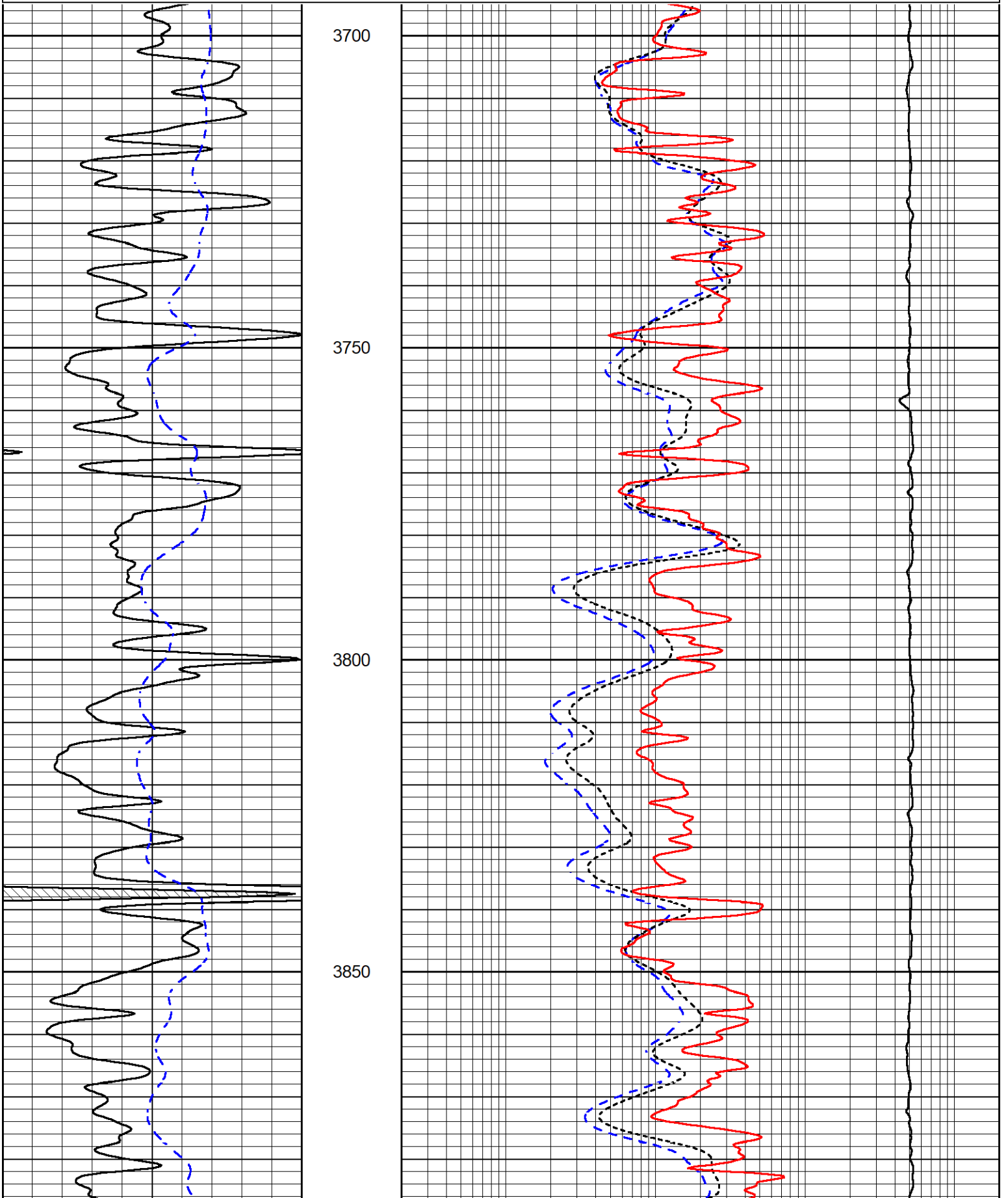
DETAIL SECTION

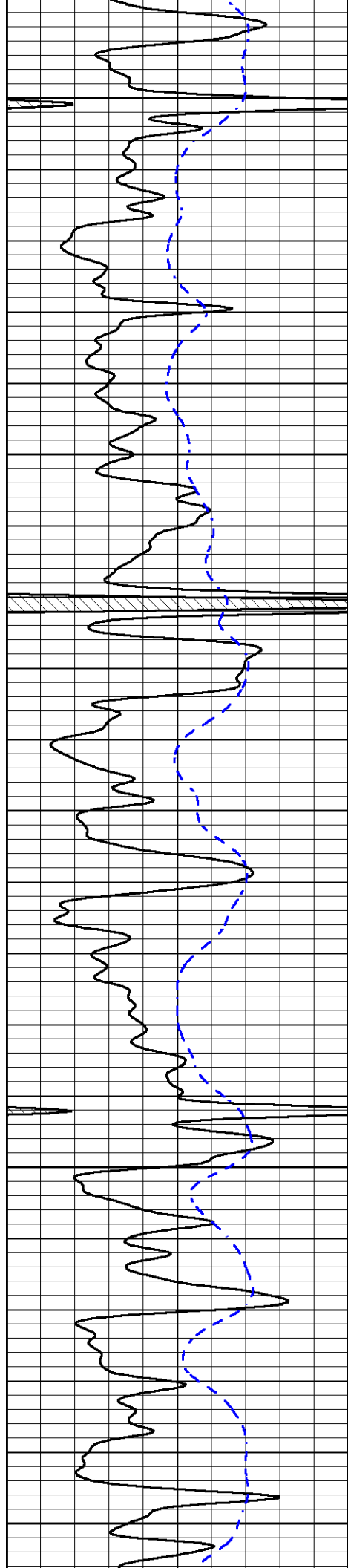
MAIN PASS

Database File talon_roger 1-19.db
 Dataset Pathname stack/pass3.1
 Presentation Format _dil
 Dataset Creation Thu Nov 04 06:09:25 2021
 Charted by Depth in Feet scaled 1:240

0	Gamma Ray (GAPI)	150
-200	SP (mV)	0

0.2	Deep Resistivity (Ohm-m)	2000
0.2	Medium Resistivity (Ohm-m)	2000
0.2	Shallow Resistivity (Ohm-m)	2000
10000	Line Tension (lb)	0





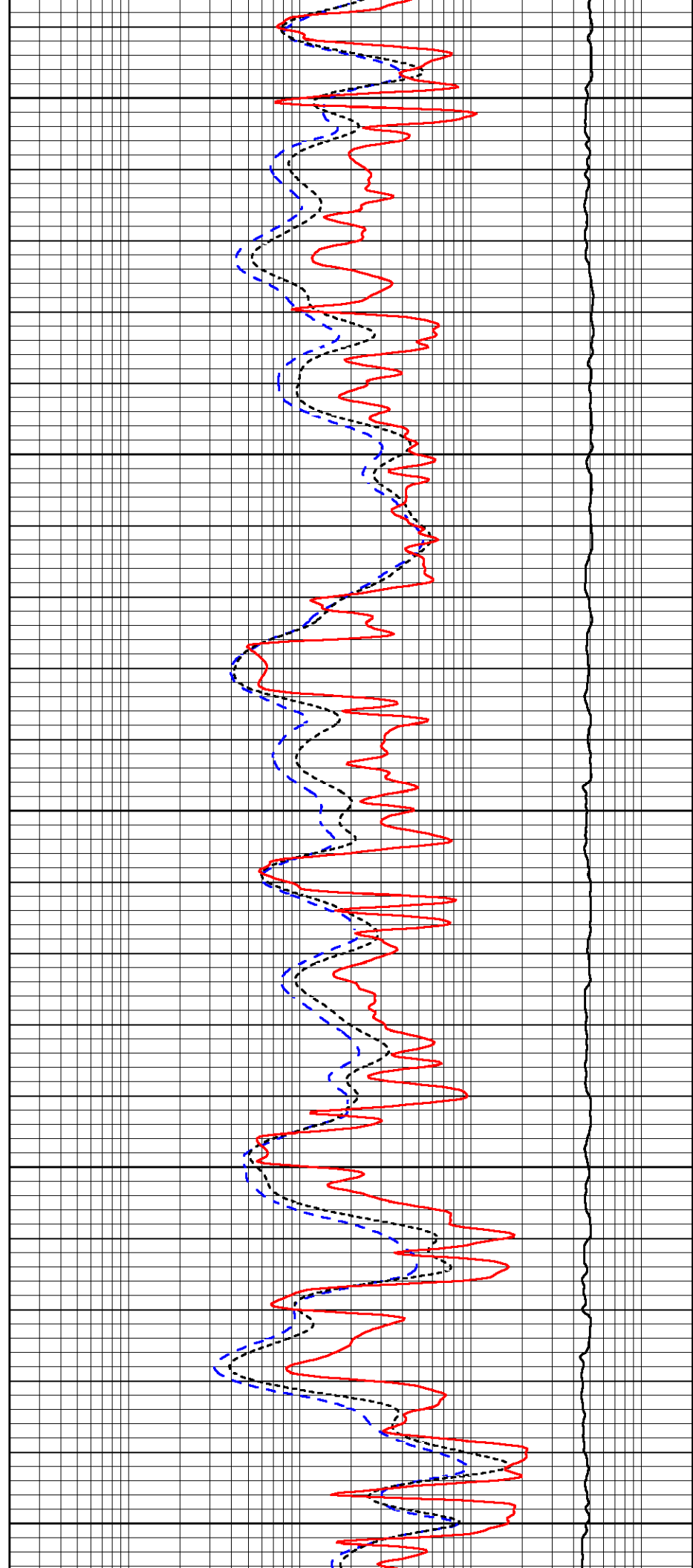
3900

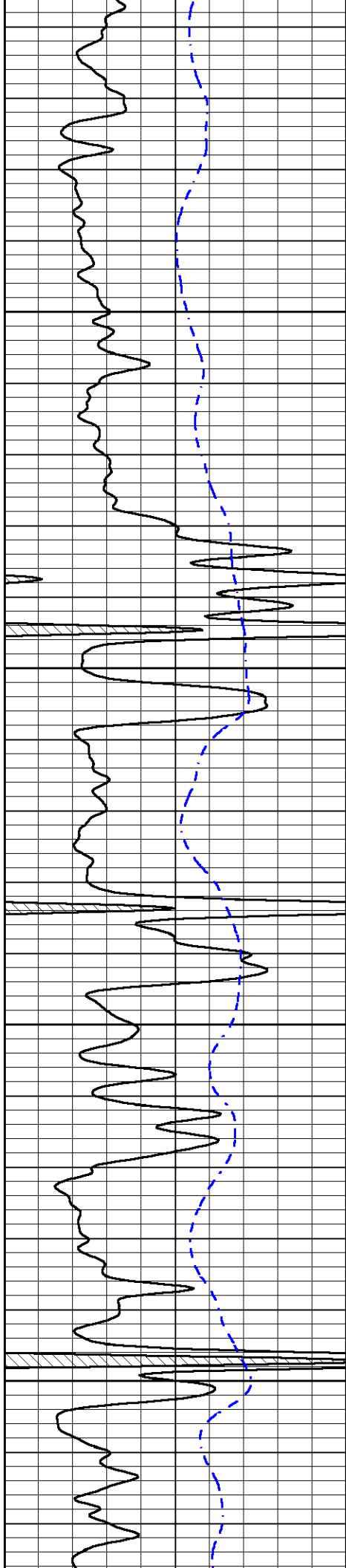
3950

4000

4050

4100



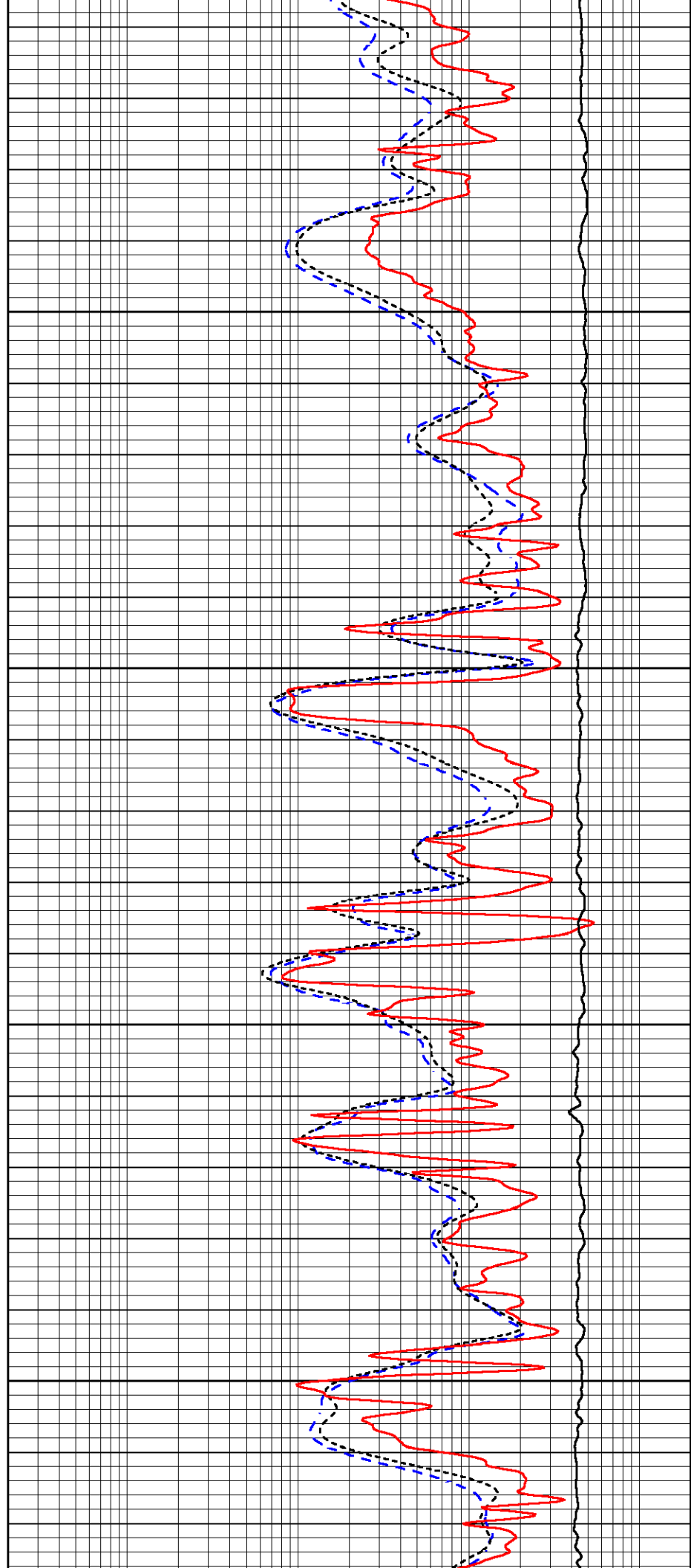


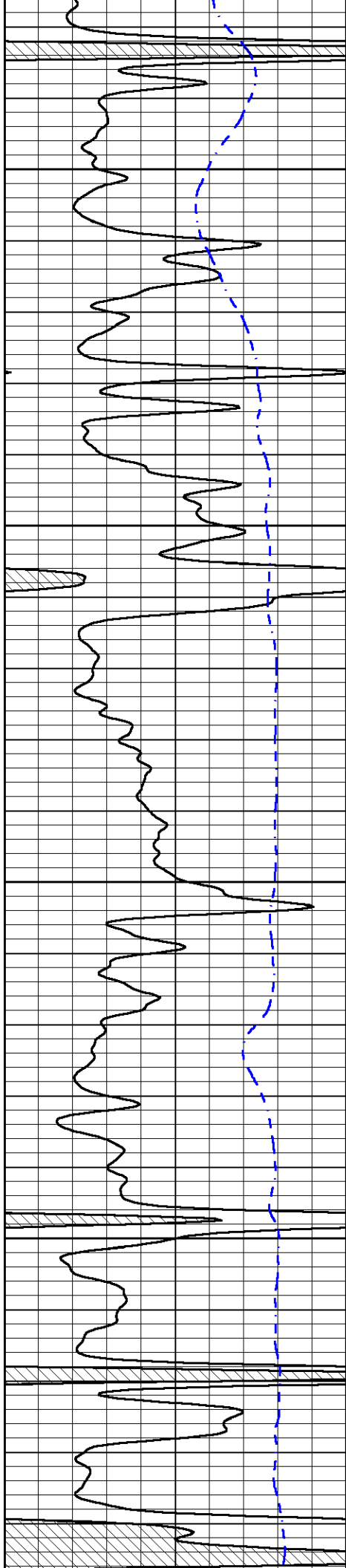
4150

4200

4250

4300



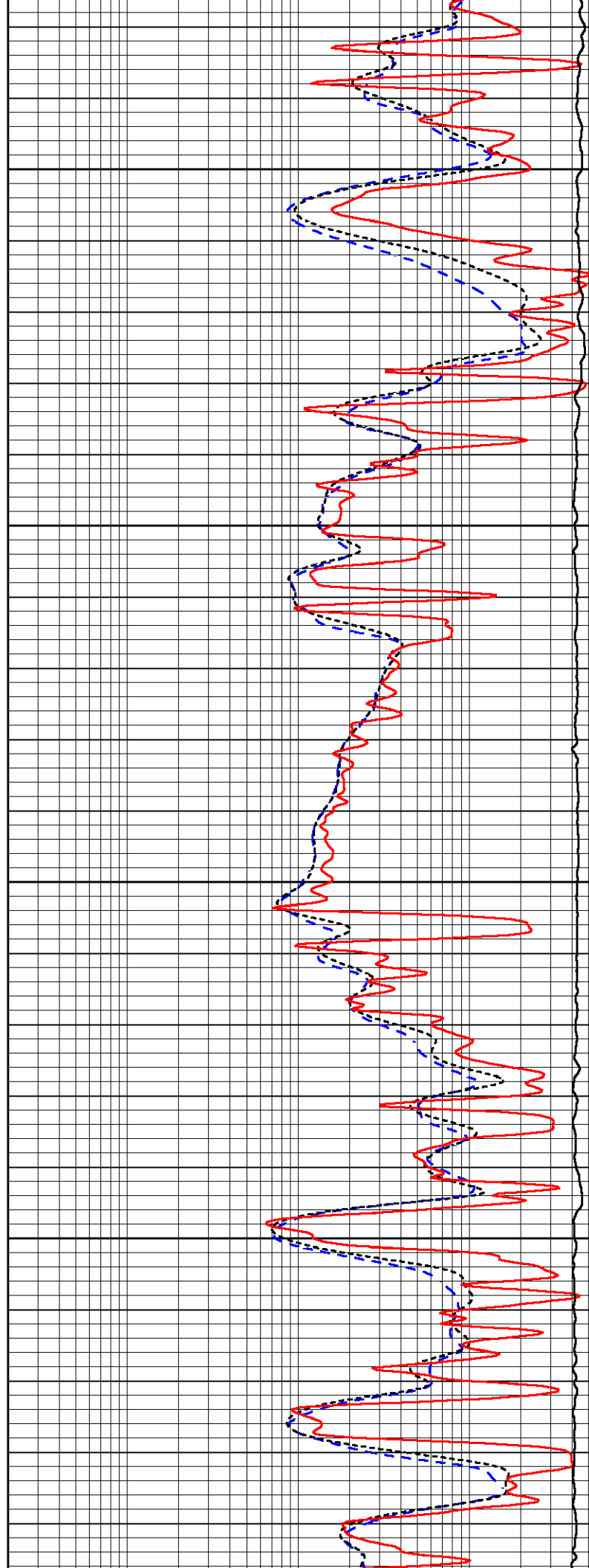


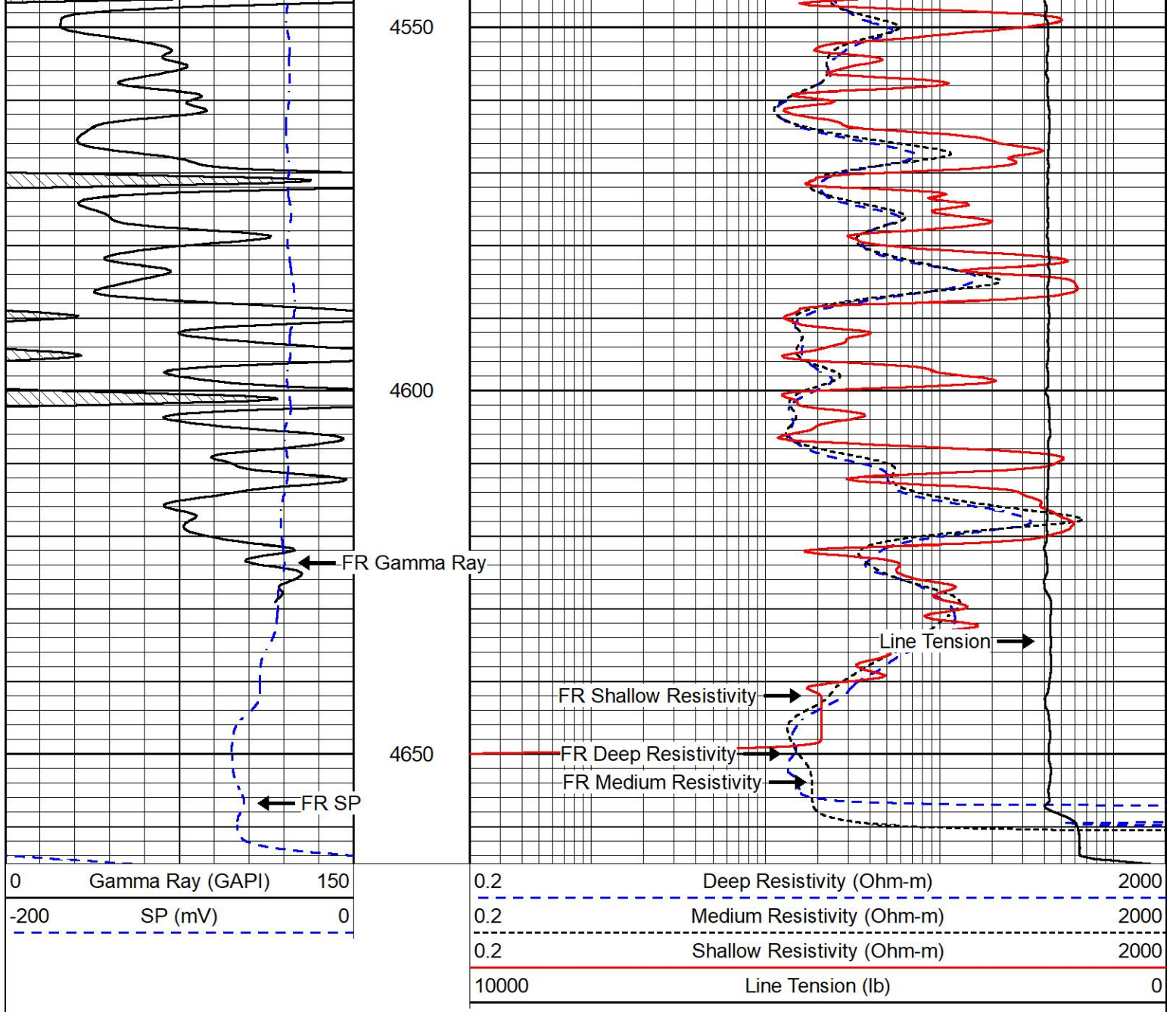
4350

4400

4450

4500

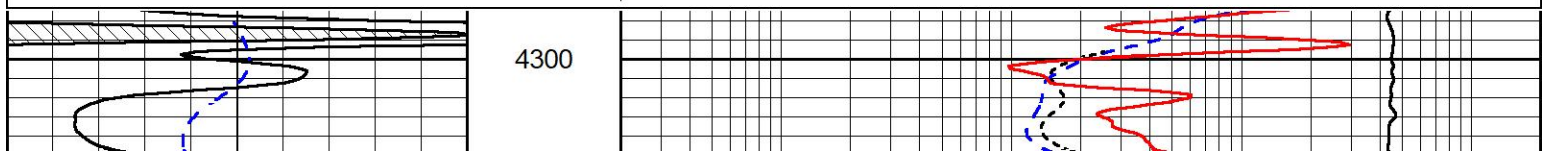
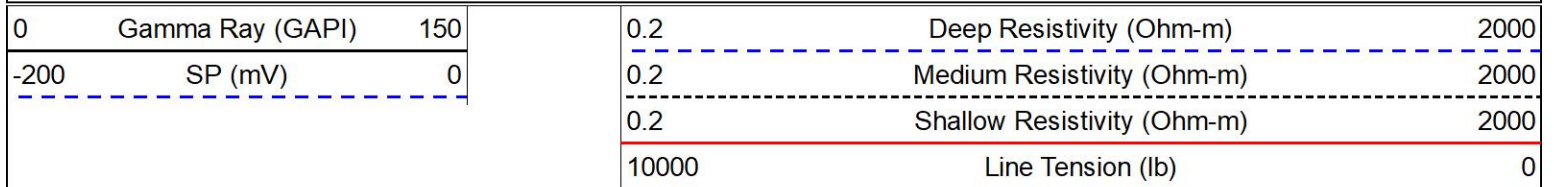


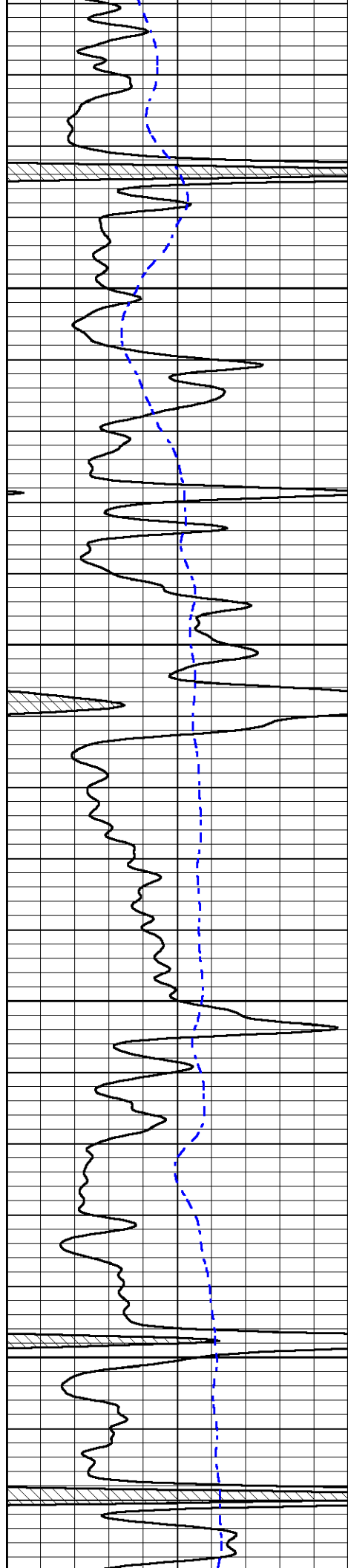


REPEAT SECTION

REPEAT PASS

Database File talon_roger 1-19.db
 Dataset Pathname stack/pass2.1
 Presentation Format _dil
 Dataset Creation Thu Nov 04 05:46:14 2021
 Charted by Depth in Feet scaled 1:240



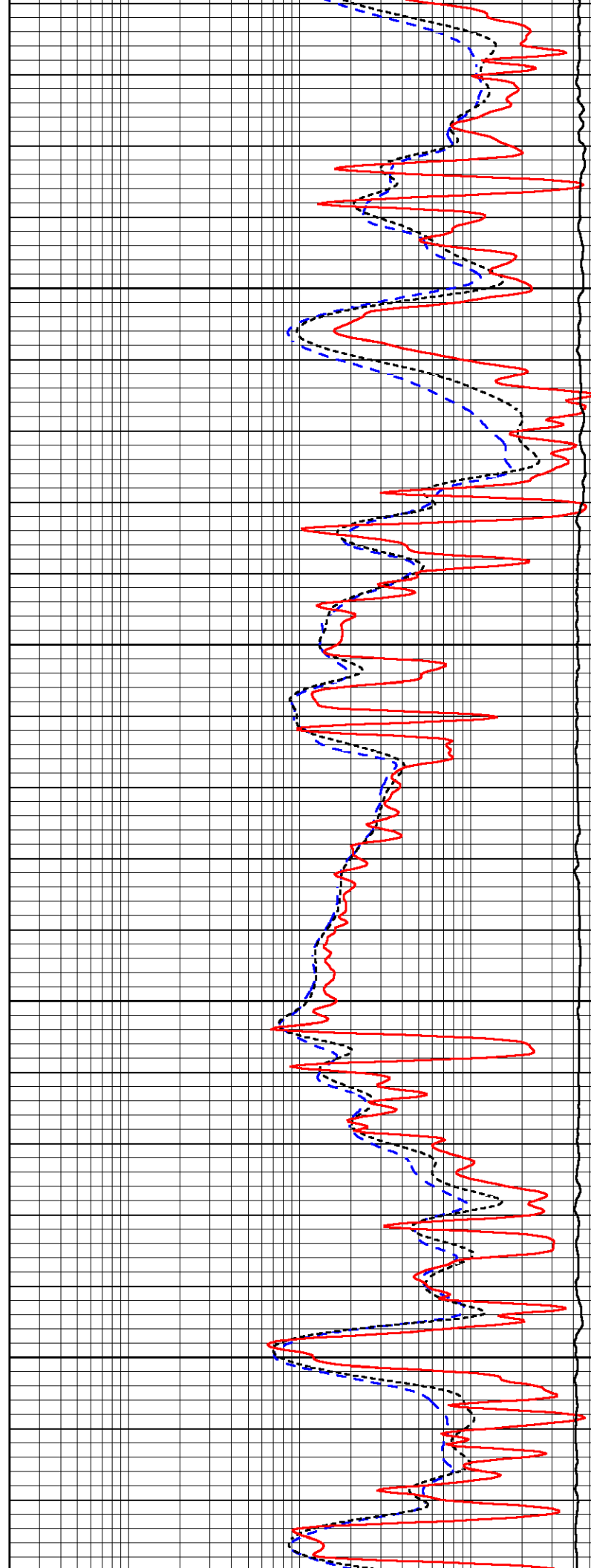


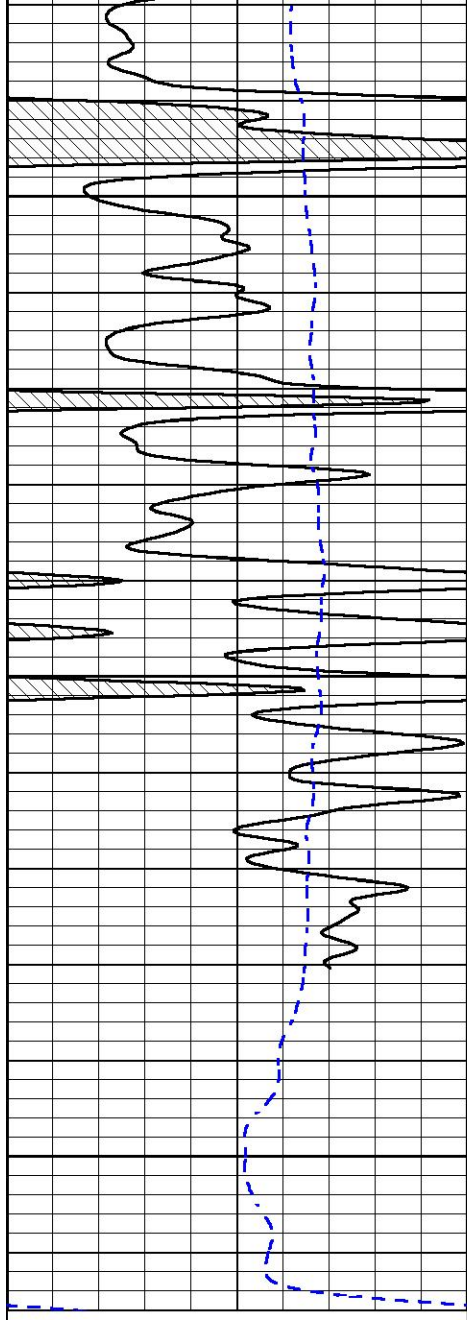
4350

4400

4450

4500



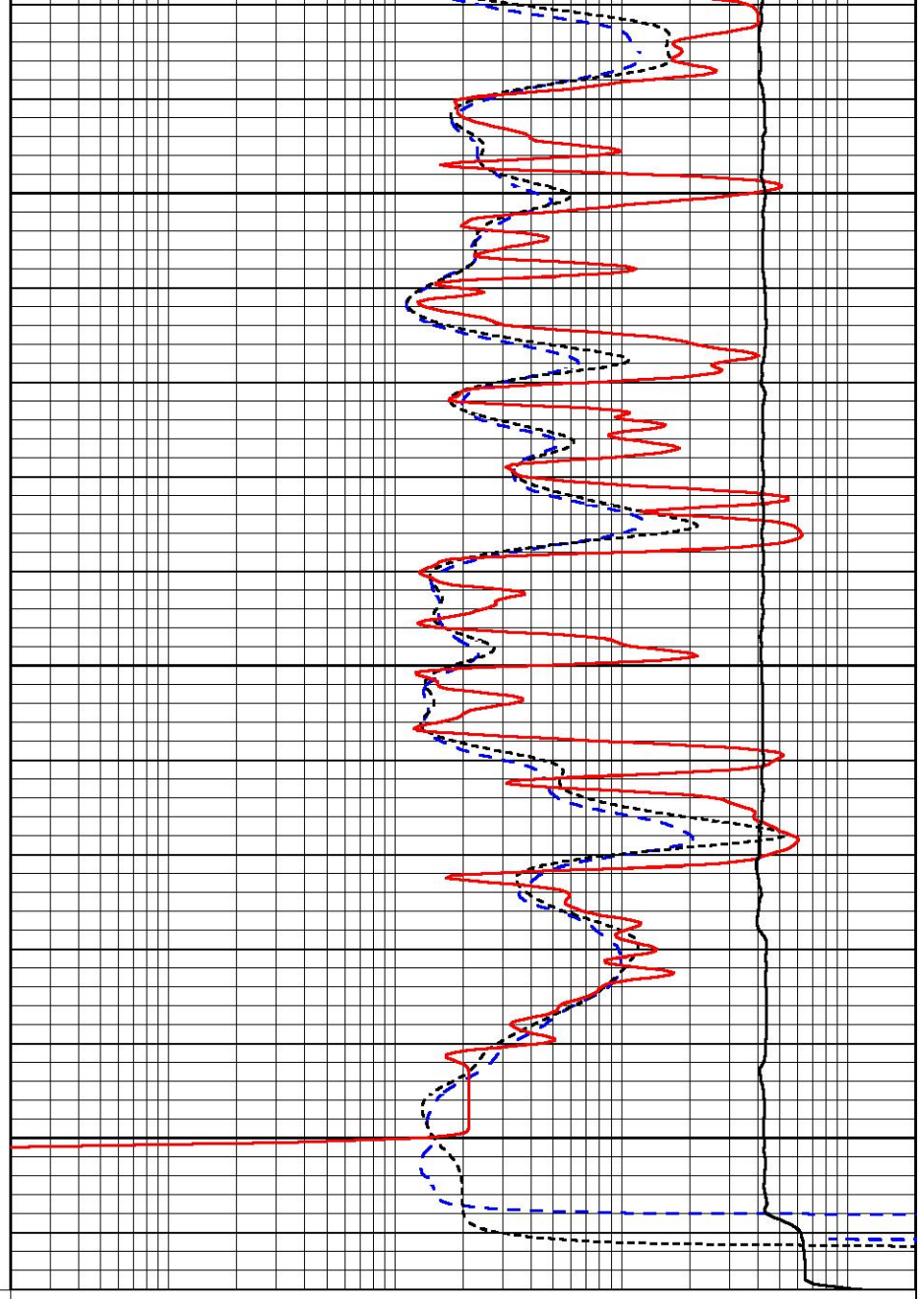


4550

4600

4650

0 Gamma Ray (GAPI) 150
 -200 SP (mV) 0



0.2 Deep Resistivity (Ohm-m) 2000
 0.2 Medium Resistivity (Ohm-m) 2000
 0.2 Shallow Resistivity (Ohm-m) 2000
 10000 Line Tension (lb) 0



MIDWEST WIRELINE

Company Talon Group, LLC
 Well Roger 1-19
 Field Hiney
 County Lane
 State Kansas