



DUAL INDUCTION LOG

Company DOWNING-NELSON OIL CO., INC.

Well BUCKNER #1-19

Field UNNAMED

County RAWLINS State KANSAS

Location: API #: 15-153-21273-0000

1060' FNL & 1880' FEL

SEC 19 TWP 5S RGE 36W

Other Services
CDL/CNL
ML/SO

Elevation

Permanent Datum

GROUND LEVEL Elevation

3288

Log Measured From

KELLY BUSHING 8' A.G.L.

Drilling Measured From

KELLY BUSHING

K.B. 3296

D.F. 3294

G.L. 3288

Date 11/19/21

Run Number ONE

Depth Driller 4880

Depth Logger 4881

Bottom Logged Interval 4879

Top Log Interval 00

Casing Driller 8 5/8" @ 480

Casing Logger 480

Bit Size 7 7/8"

Type Fluid in Hole CHEMICAL MUD

Density / Viscosity 9.4/70

pH / Fluid Loss 11.0/7.8

Source of Sample FLOWLINE

Rm @ Meas. Temp 2.8@ 60F

Rmf @ Meas. Temp 2.1@ 60F

Rmc @ Meas. Temp 3.36 @ 60F

Source of Rmf / Rmc MEASURED

Rm @ BHT 1.35@ 124F

Time Circulation Stopped 2 HOURS

Time Logger on Bottom ////

Maximum Recorded Temperature 124F

Equipment Number 1523

Location HAYS, KANSAS

Recorded By GUS PFANENSTIEL

Witnessed By MARC DOWNING

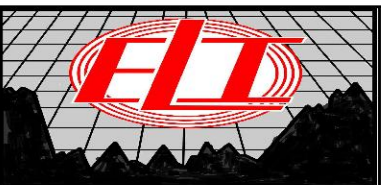
<<< Fold Here >>>

All interpretations are opinions based on inferences from electrical or other measurements and we cannot and do not guarantee the accuracy or correctness of any interpretation, and we shall not, except in the case of gross or willful negligence on our part, be liable or responsible for any loss, costs, damages, or expenses incurred or sustained by anyone resulting from any interpretation made by any of our officers, agents or employees. These interpretations are also subject to our general terms and conditions set out in our current Price Schedule.

Comments

THANK YOU FOR USING ELI WIRELINE, HAYS, KS. (785) 628-6395

DIRECTIONS: BREWSTER NORTH TO CURVES 1 WEST,
3.5 NORTH, WEST INTO.

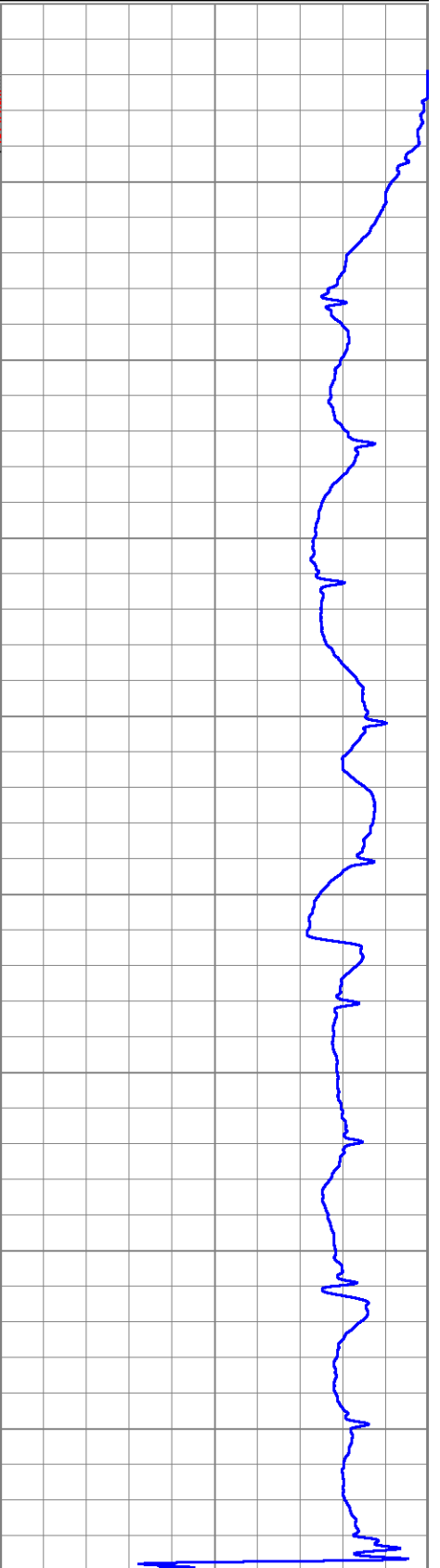
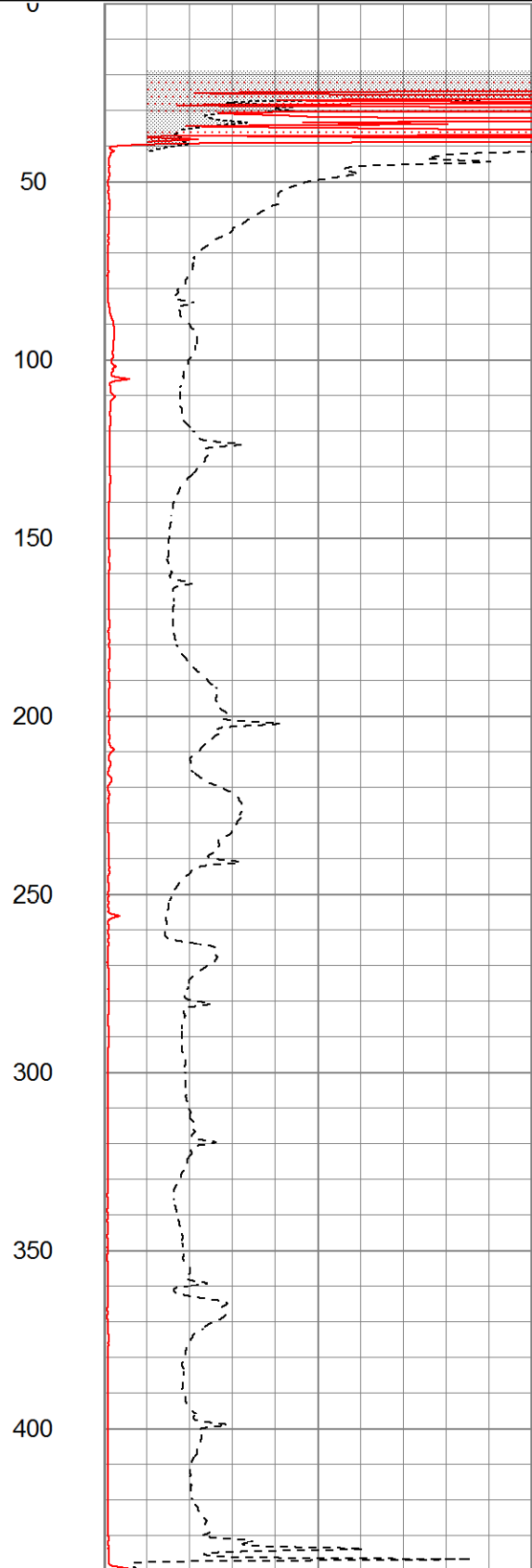
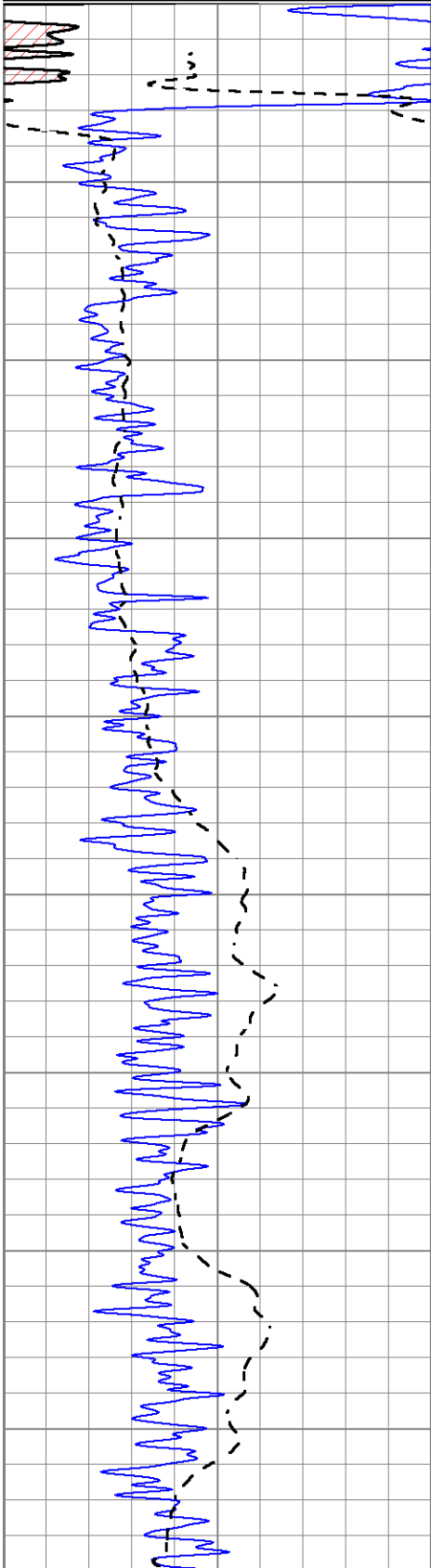


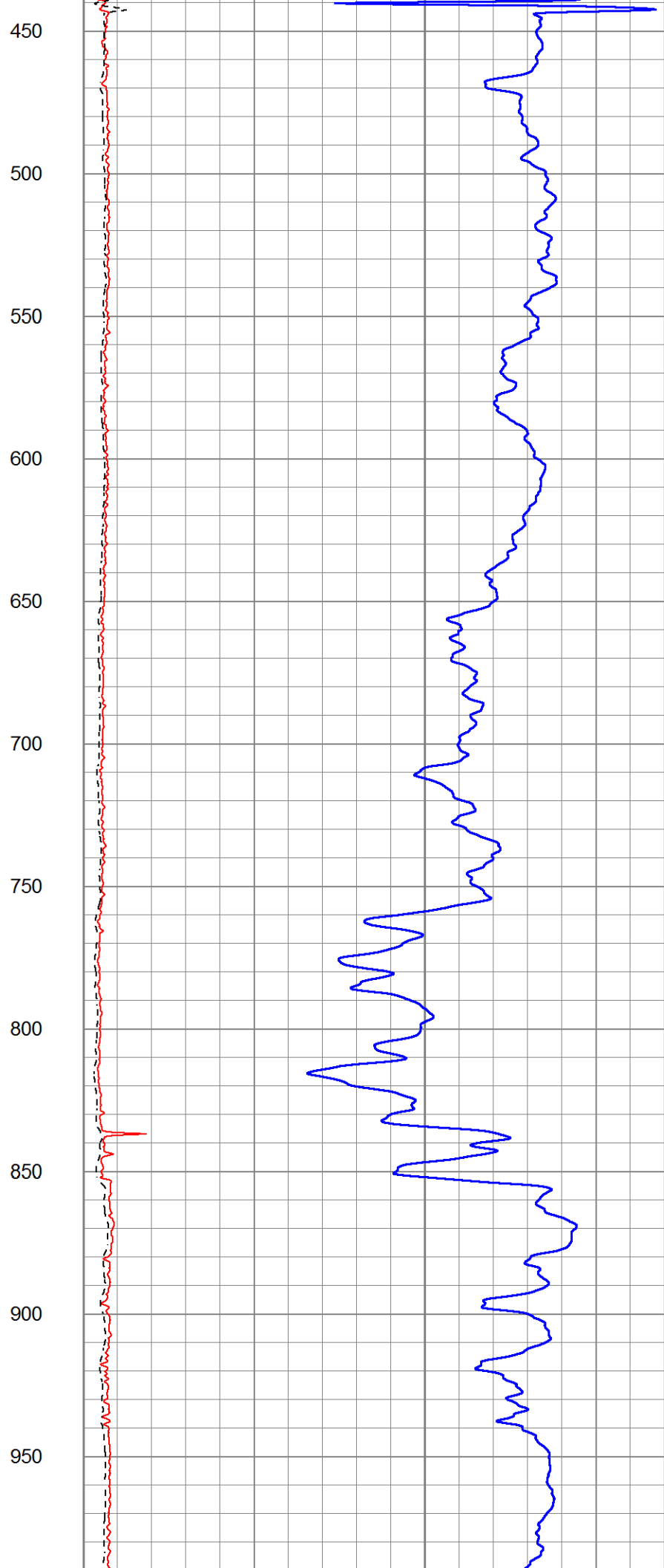
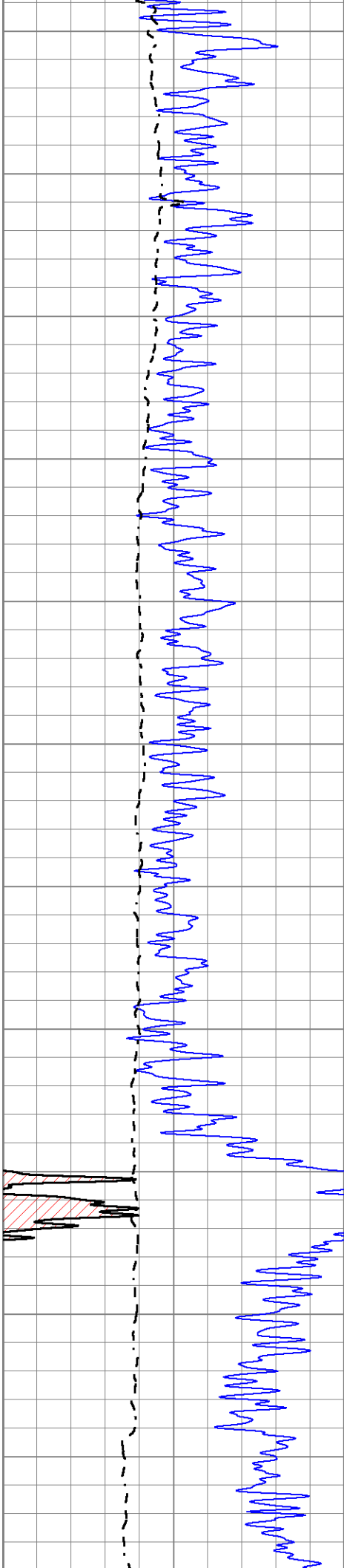
MAIN PASS

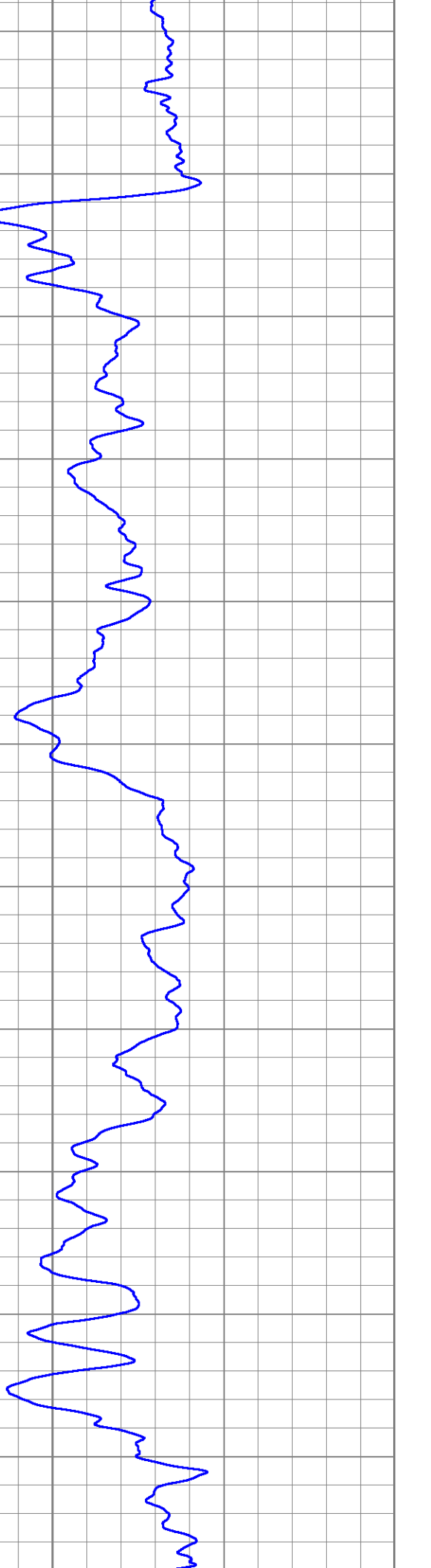
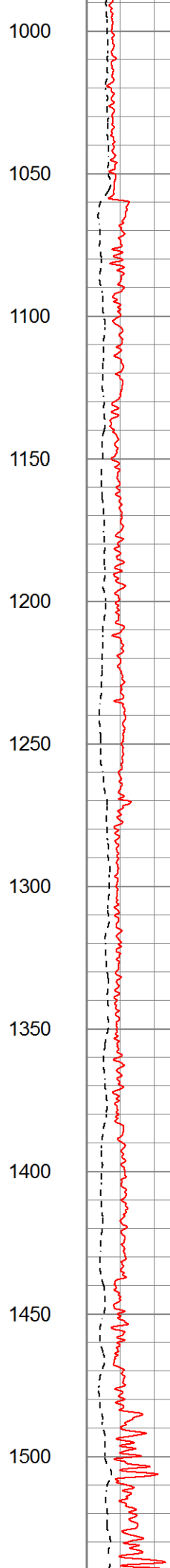
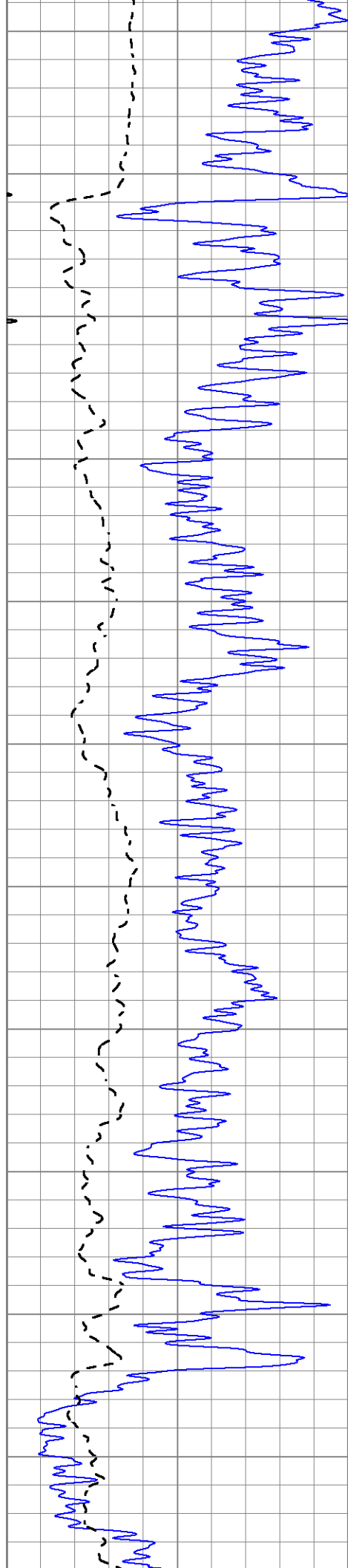
Database File 5895ddn.db
 Dataset Pathname pass3.1
 Presentation Format _dil2
 Dataset Creation Fri Nov 19 21:38:51 2021
 Charted by Depth in Feet scaled 1:600

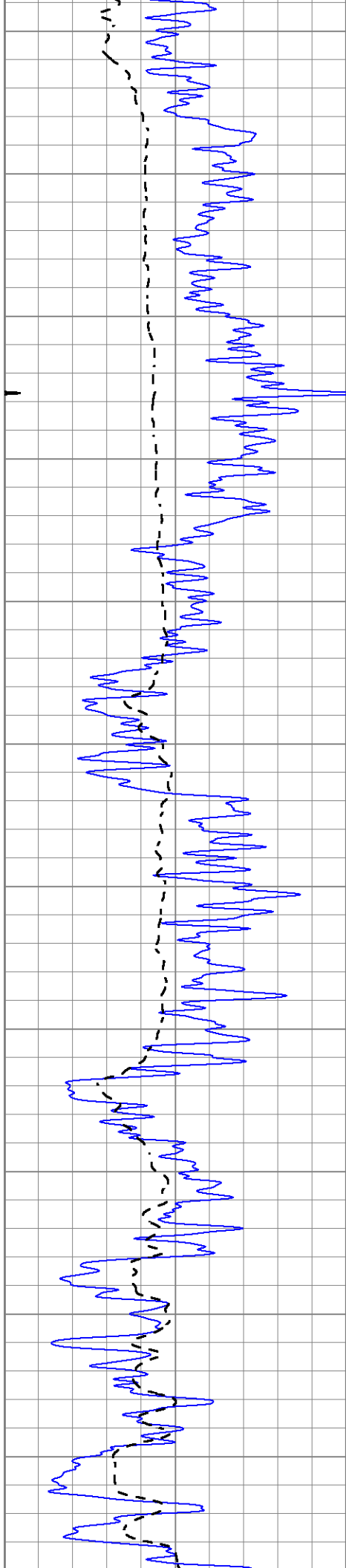
0	Gamma Ray (GAPI)	150
-100	SP (mV)	100

1000	CILD (mmho/m)	0
0	RLL3 (Ohm-m)	50
0	RILD (Ohm-m)	50
50	RILD X10 (Ohm-m)	500
50	RLL3 X10 (Ohm-m)	500

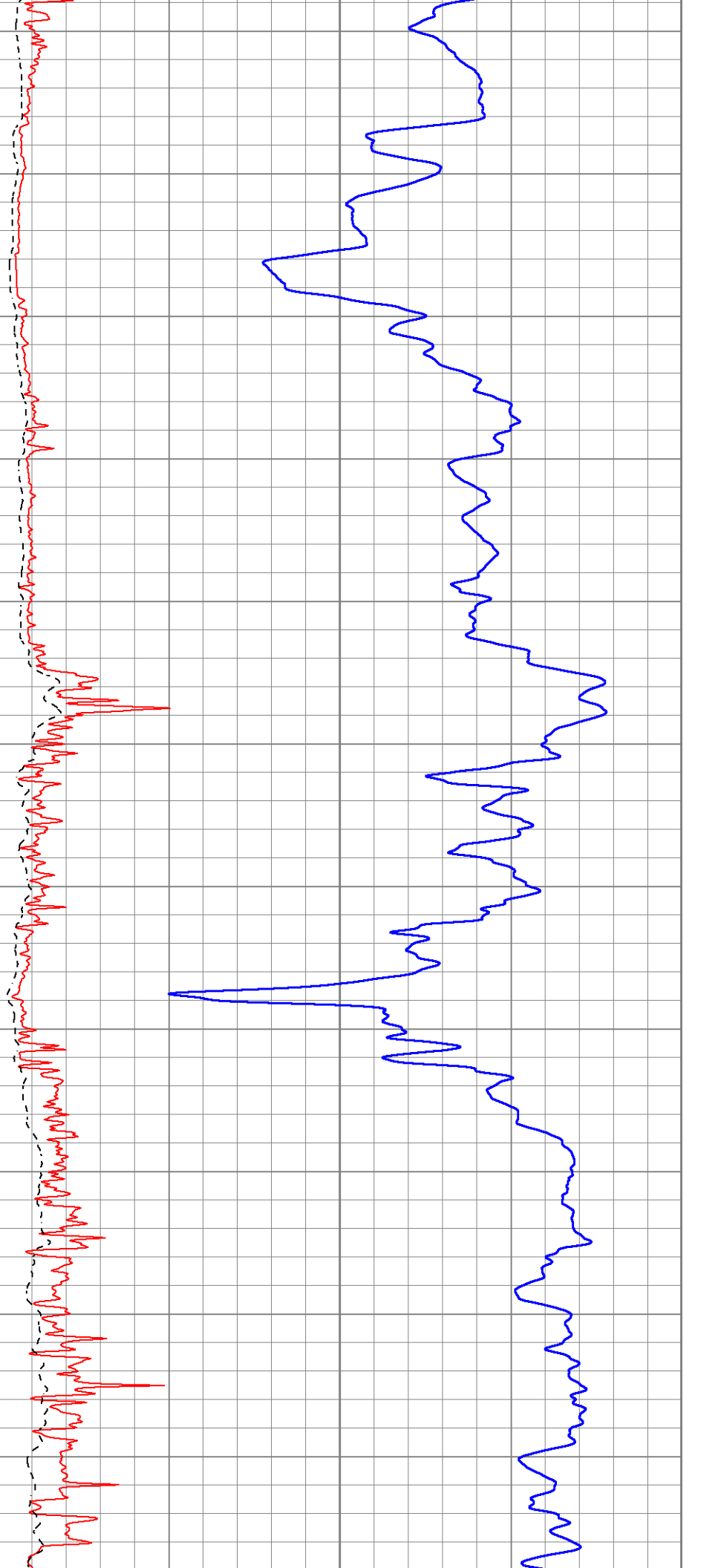


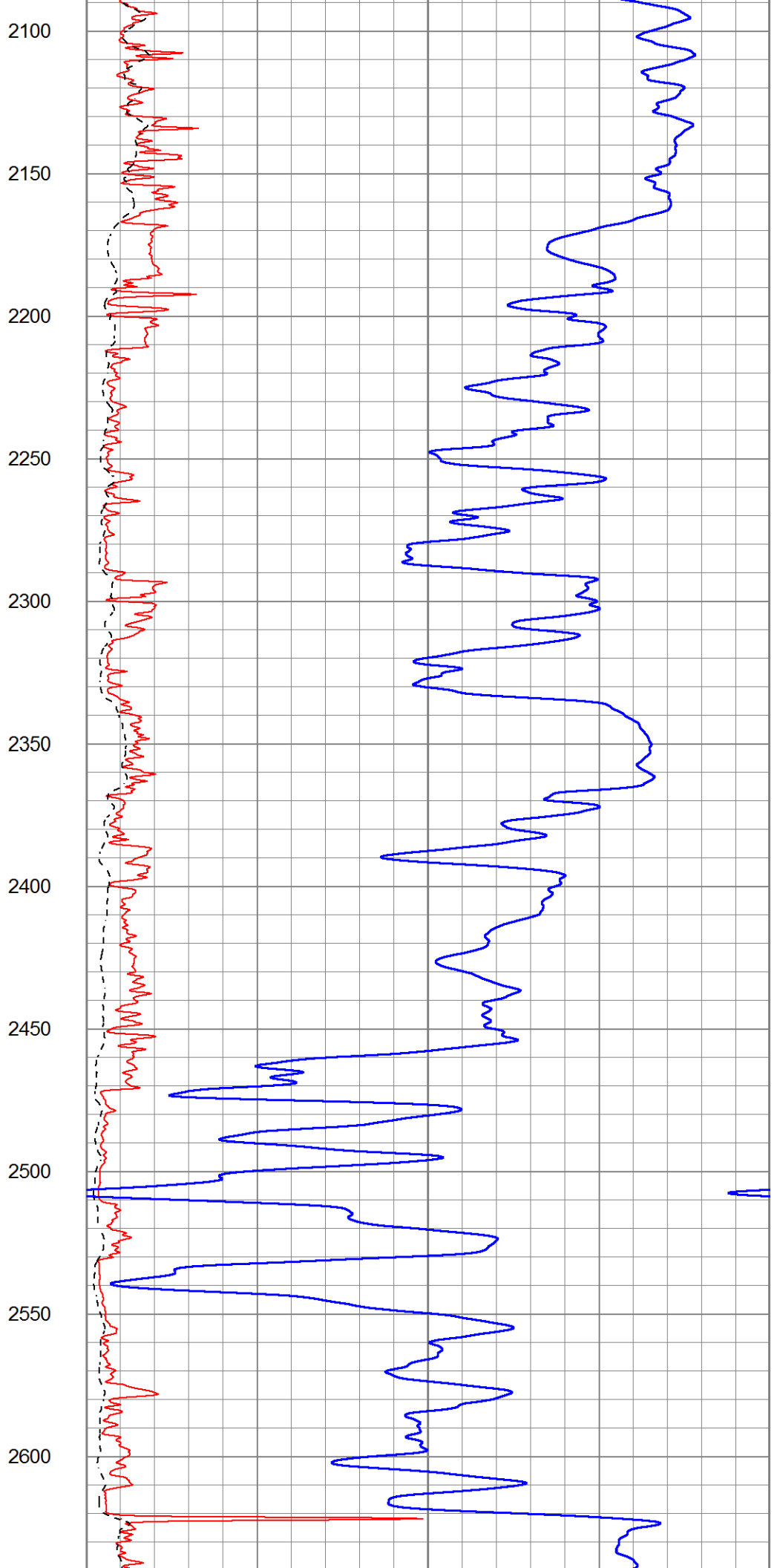
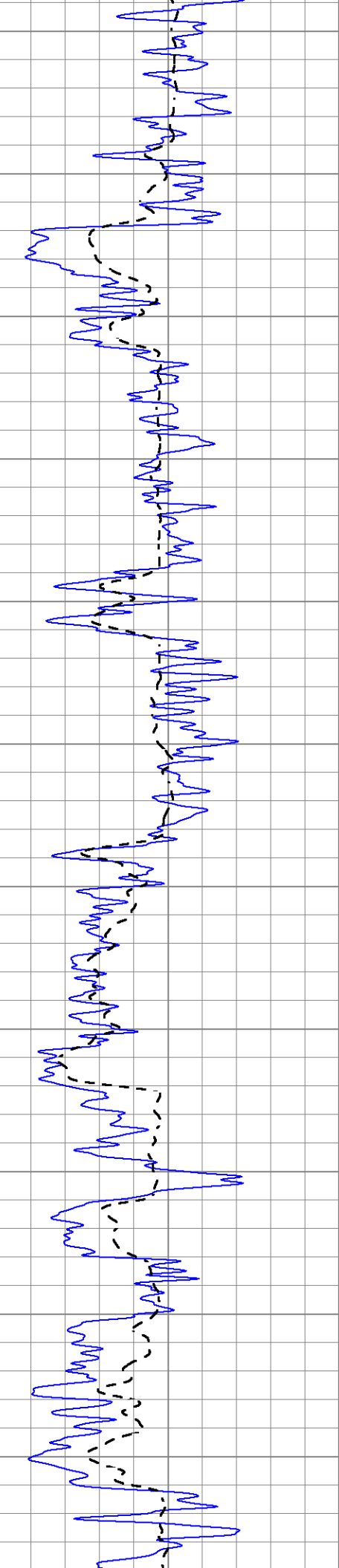


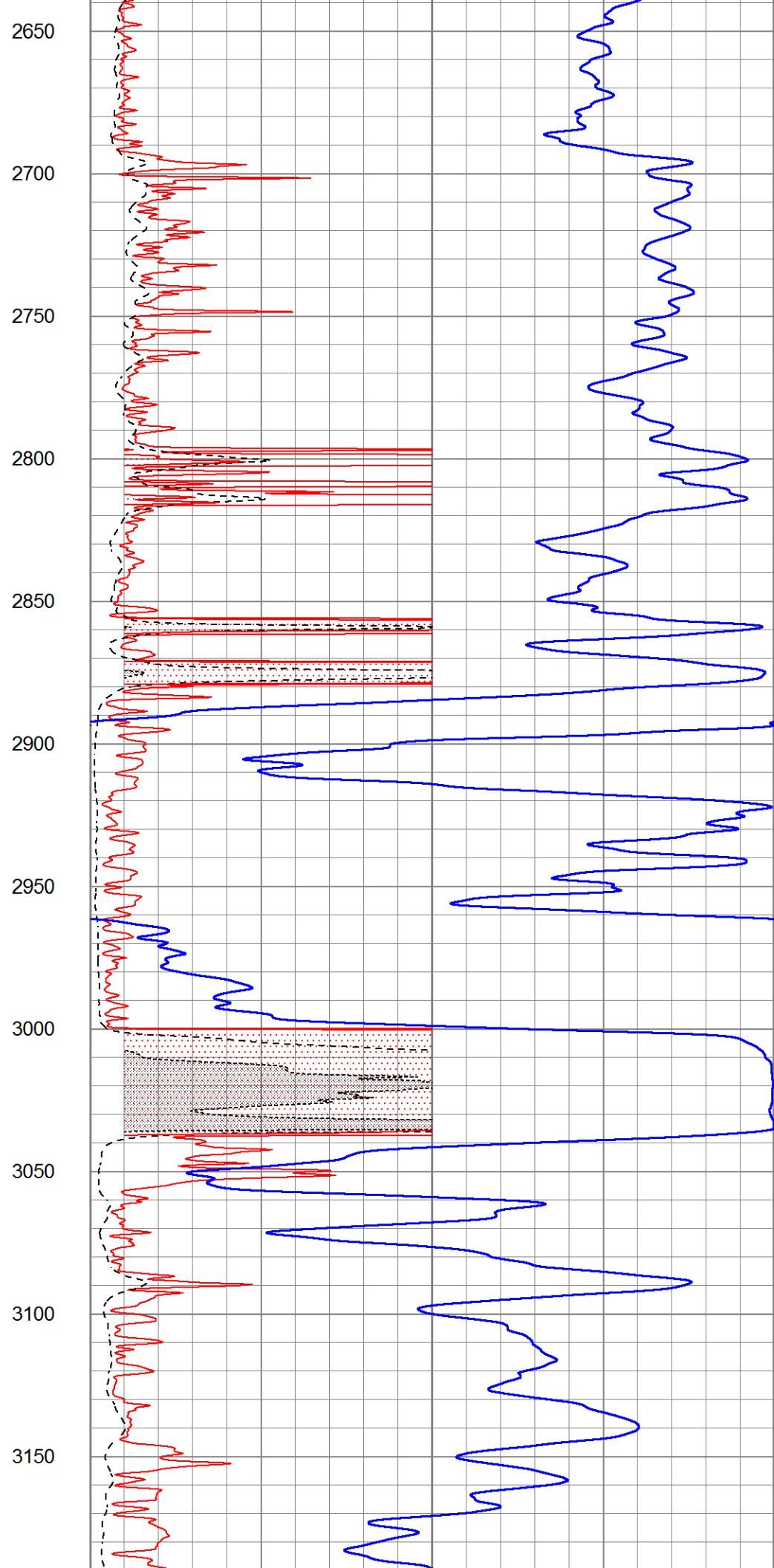
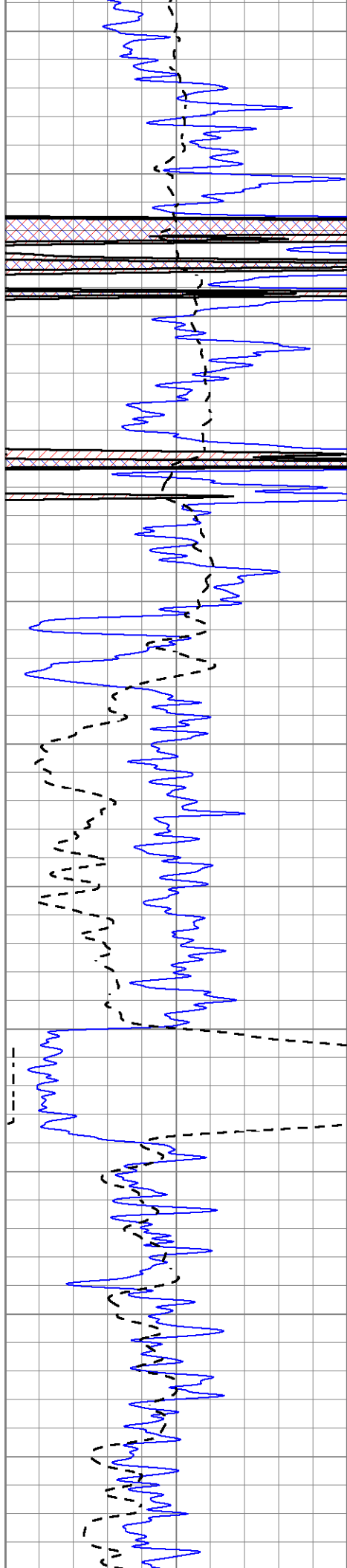


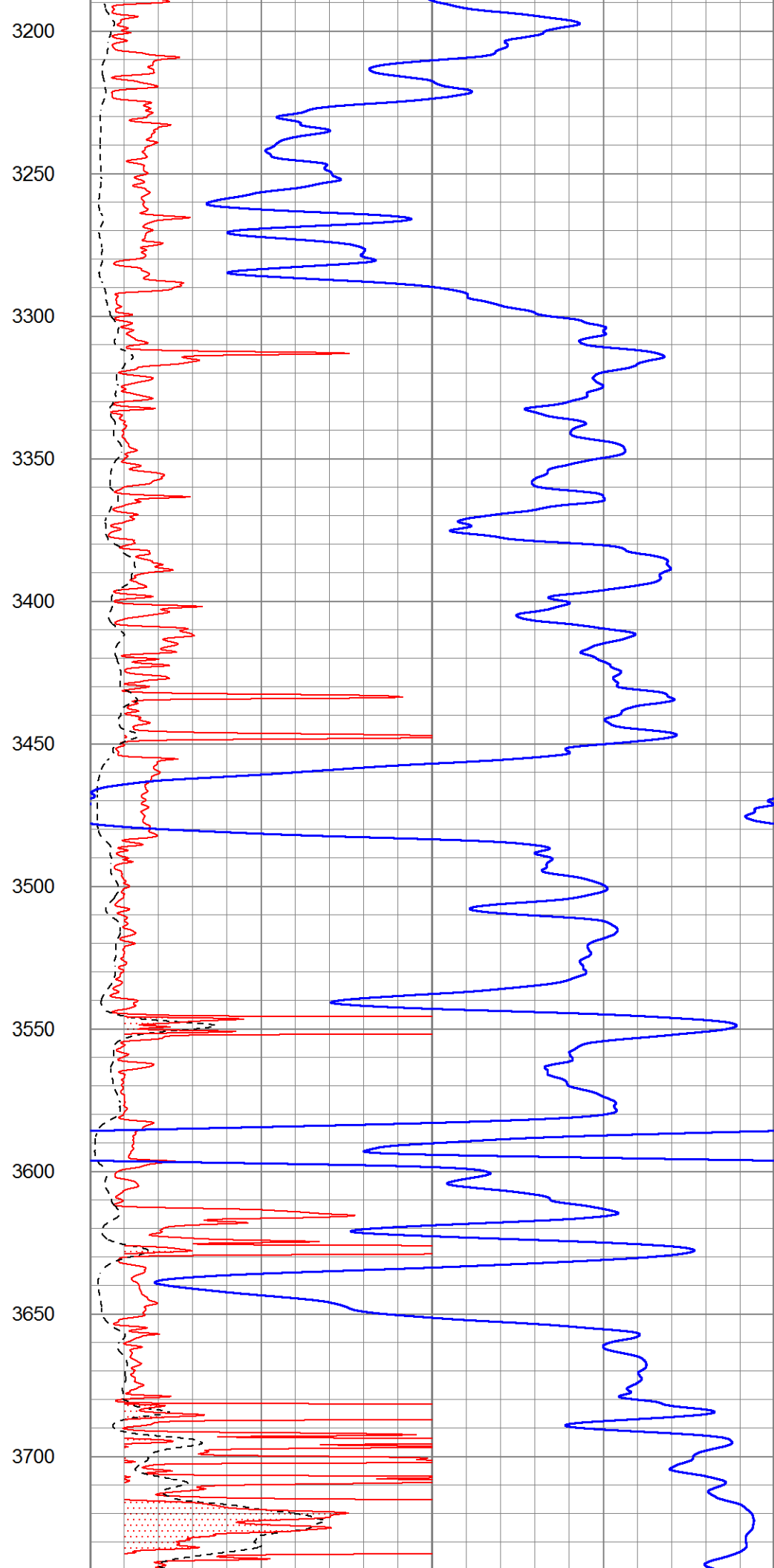
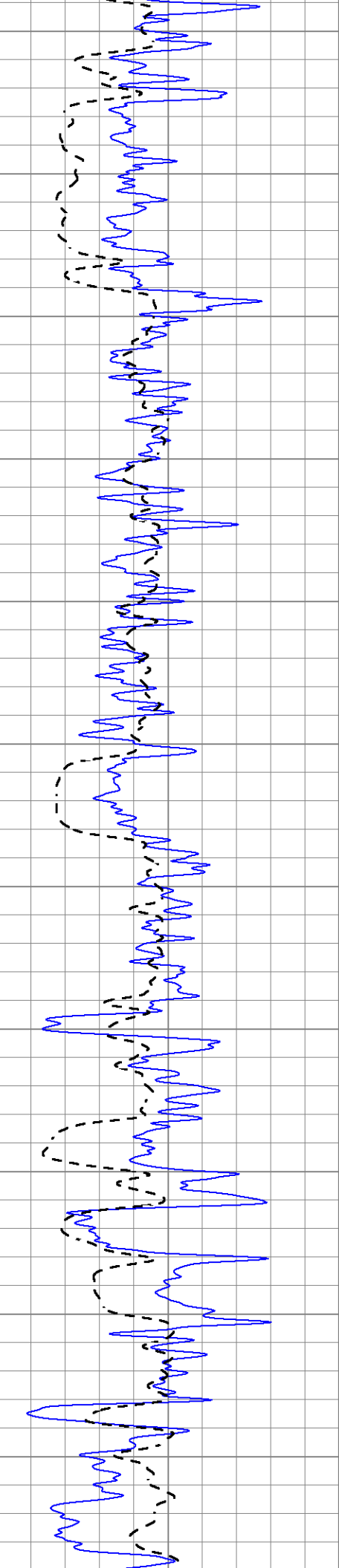


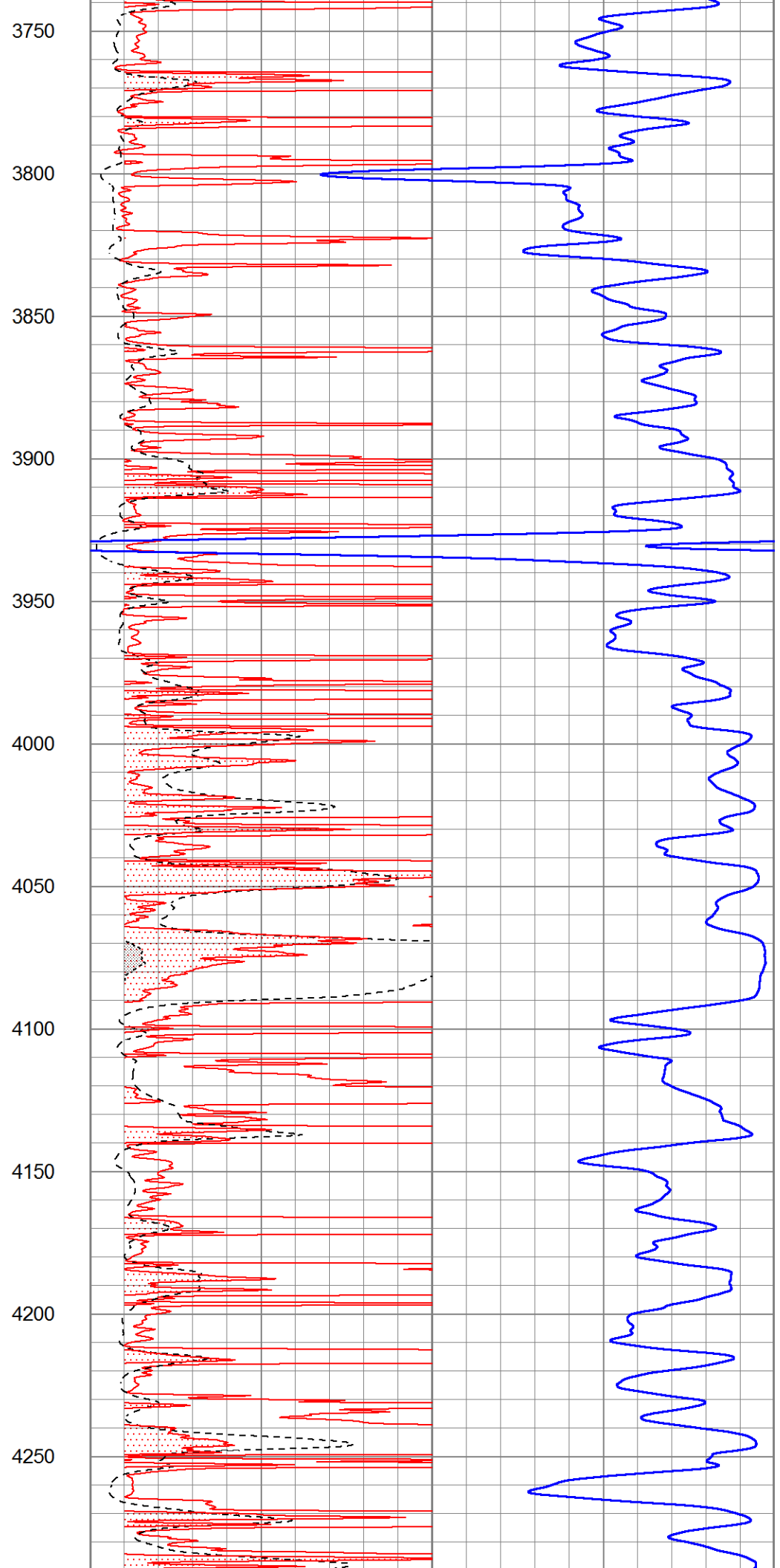
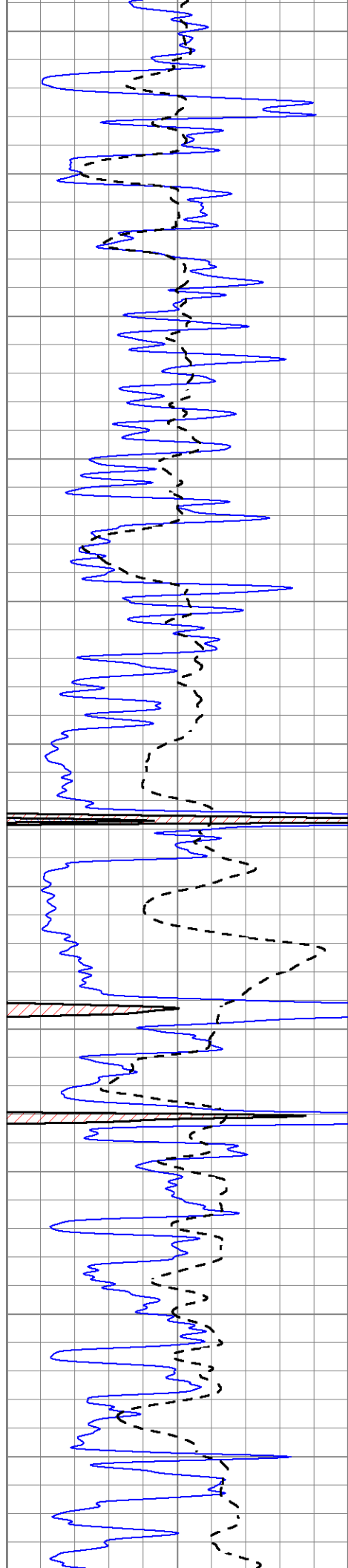
1550
1600
1650
1700
1750
1800
1850
1900
1950
2000
2050

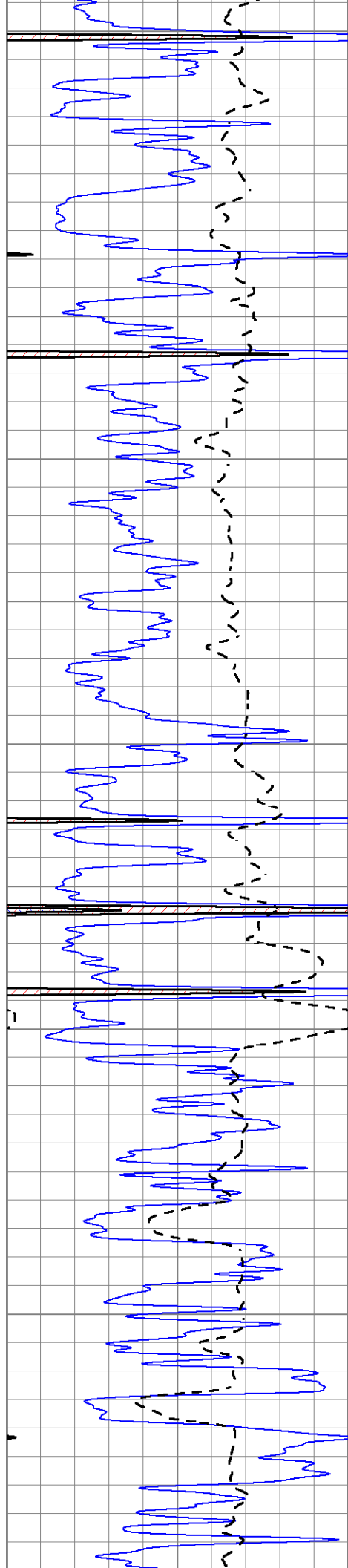




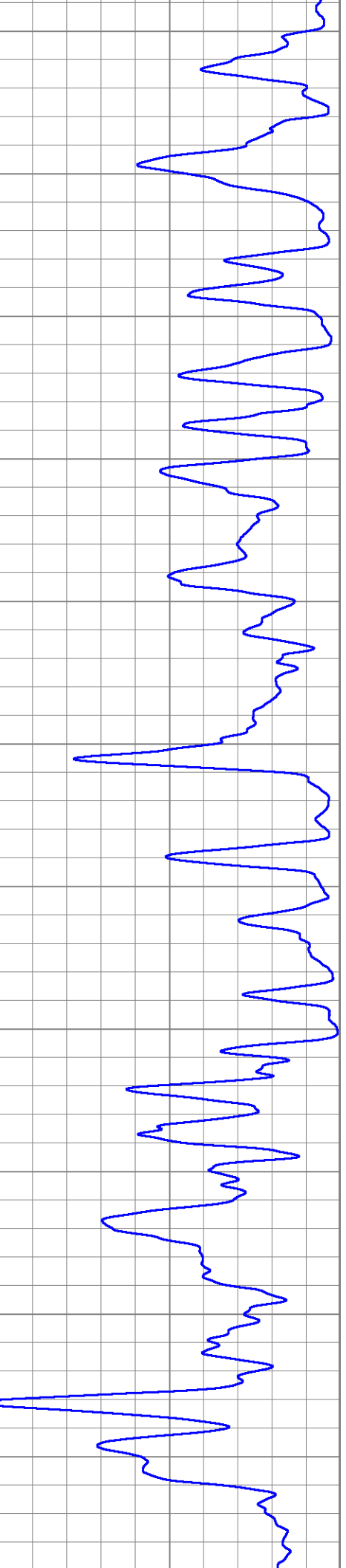
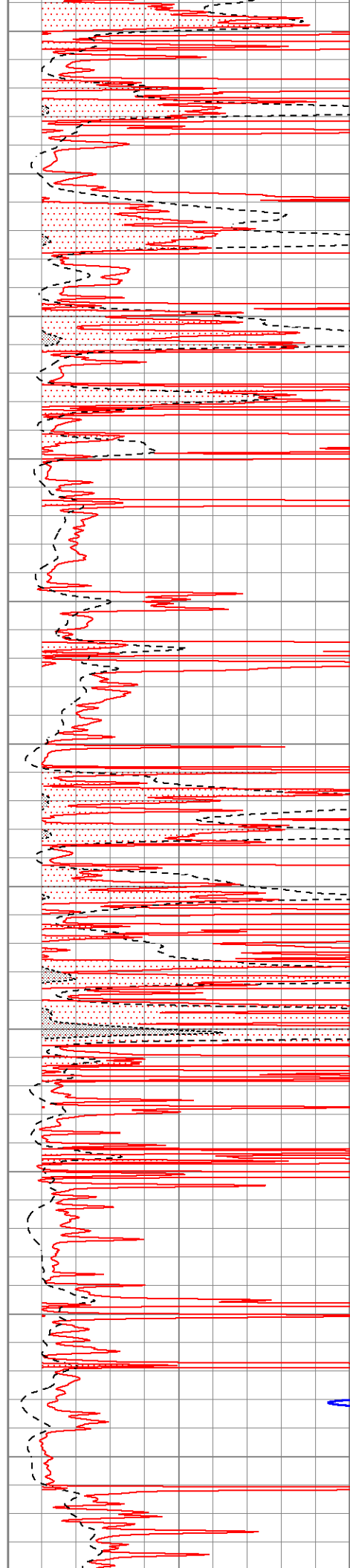


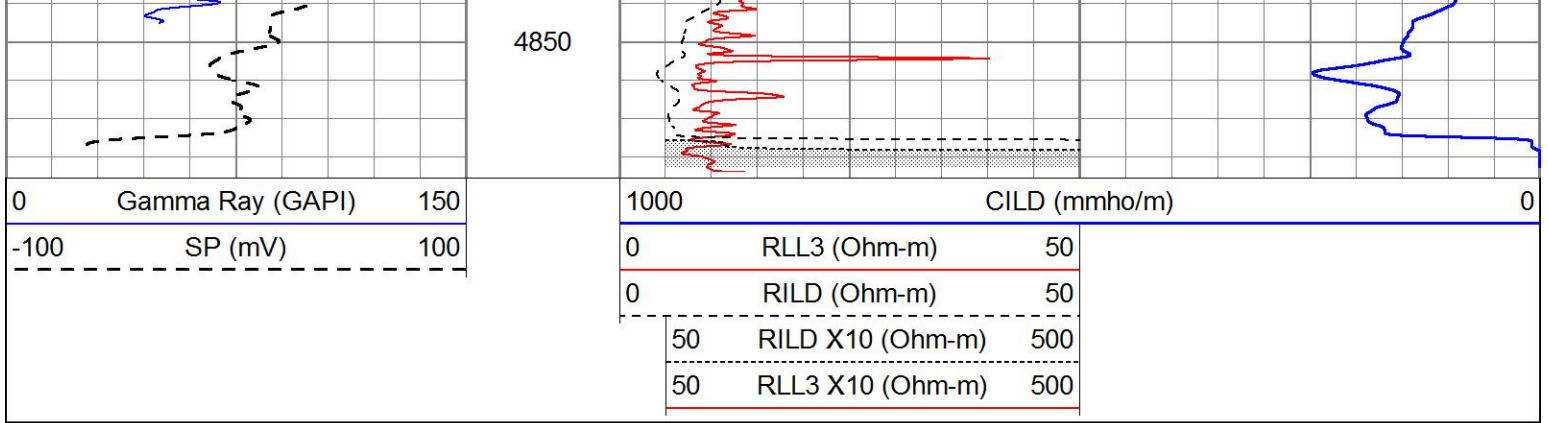






4300
4350
4400
4450
4500
4550
4600
4650
4700
4750
4800



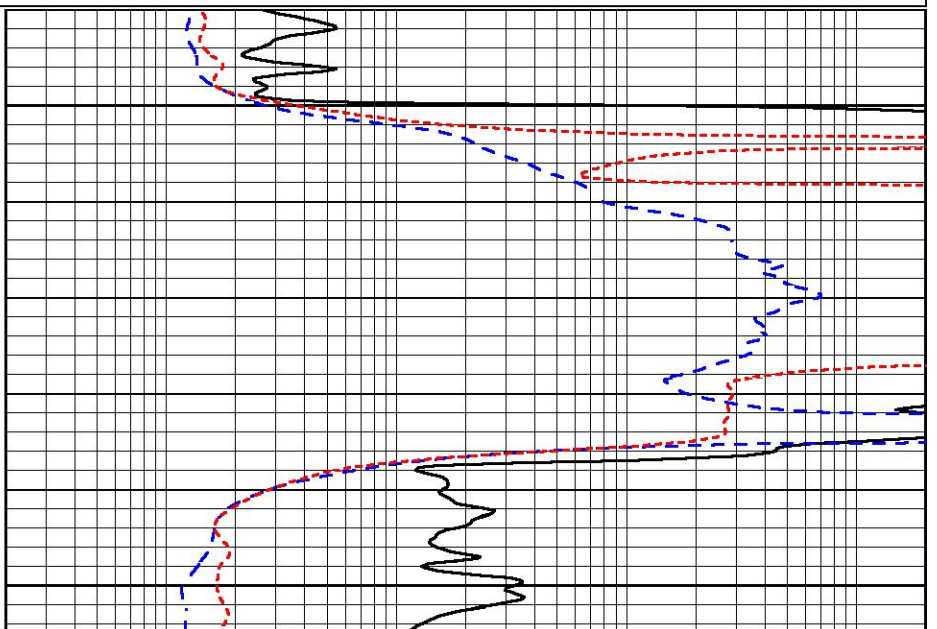
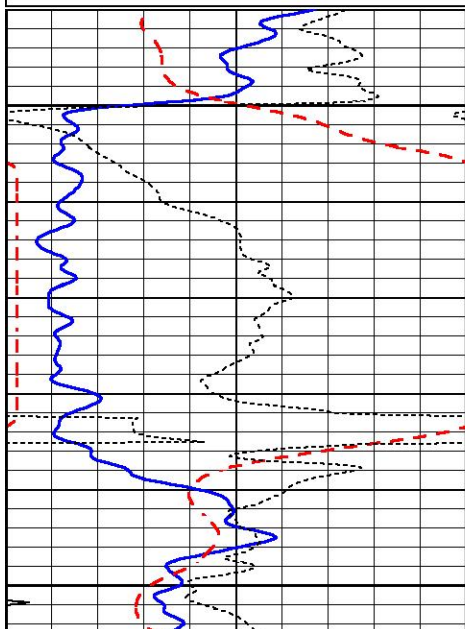


MAIN PASS

Database File 5895ddn.db
 Dataset Pathname pass3.1
 Presentation Format _dil
 Dataset Creation Fri Nov 19 21:38:51 2021
 Charted by Depth in Feet scaled 1:240

0	GAMMA RAY (GAPI)	150
-100	SP (mV)	100
-250	Rxo/Rt	50
0	MINMK	20

0.2	SHALLOW GUARD (Ohm-m)	2000
0.2	DEEP INDUCTION (Ohm-m)	2000
0.2	MEDIUM INDUCTION (Ohm-m)	2000



0	GAMMA RAY (GAPI)	150
-100	SP (mV)	100
-250	Rxo/Rt	50
0	MINMK	20

0.2	SHALLOW GUARD (Ohm-m)	2000
0.2	DEEP INDUCTION (Ohm-m)	2000
0.2	MEDIUM INDUCTION (Ohm-m)	2000

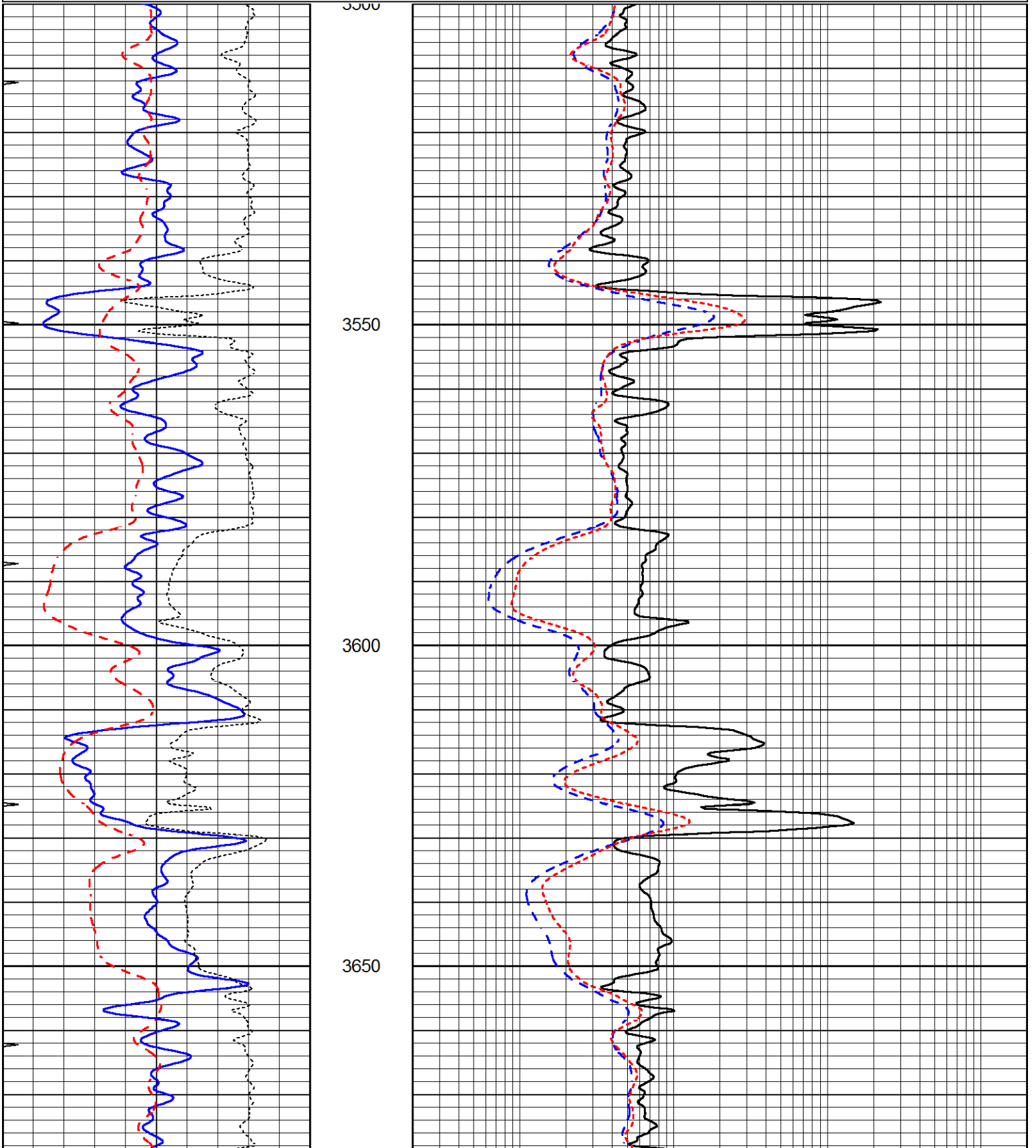


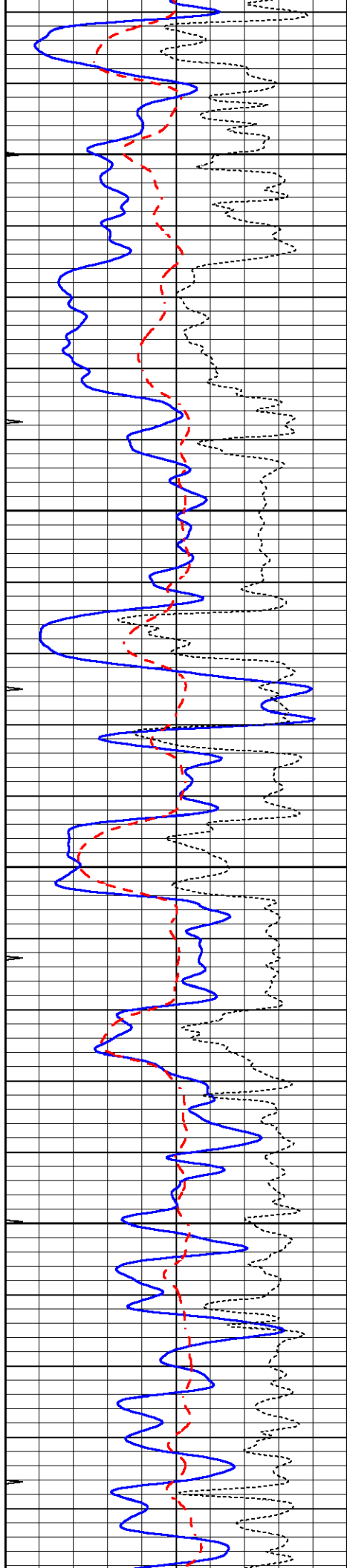
MAIN PASS

Database File 5895ddn.db
 Dataset Pathname pass3.1
 Presentation Format _dil
 Dataset Creation Fri Nov 19 21:38:51 2021
 Charted by Depth in Feet scaled 1:240

0	GAMMA RAY (GAPI)	150
-100	SP (mV)	100
-250	Rxo/Rt	50
0	MINMK	20

0.2	SHALLOW GUARD (Ohm-m)	2000
0.2	DEEP INDUCTION (Ohm-m)	2000
0.2	MEDIUM INDUCTION (Ohm-m)	2000



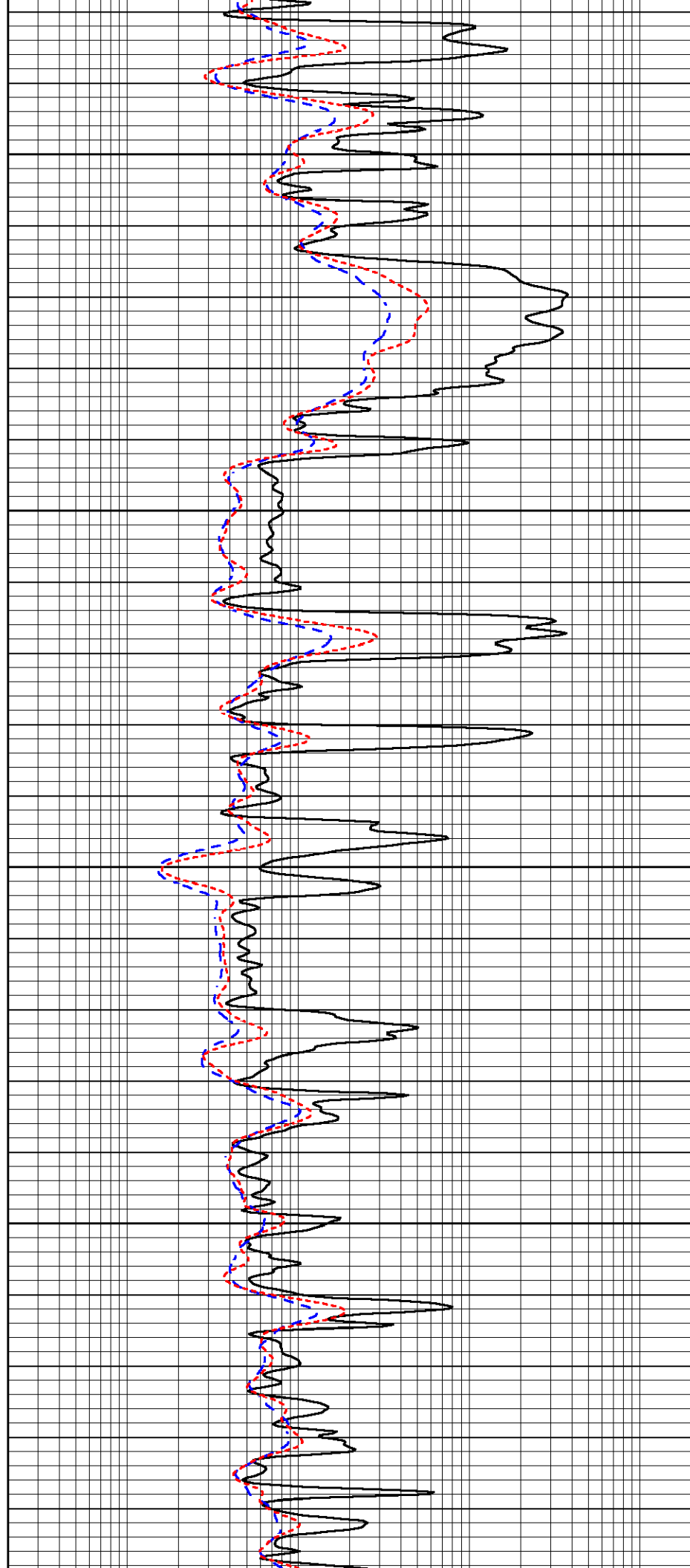


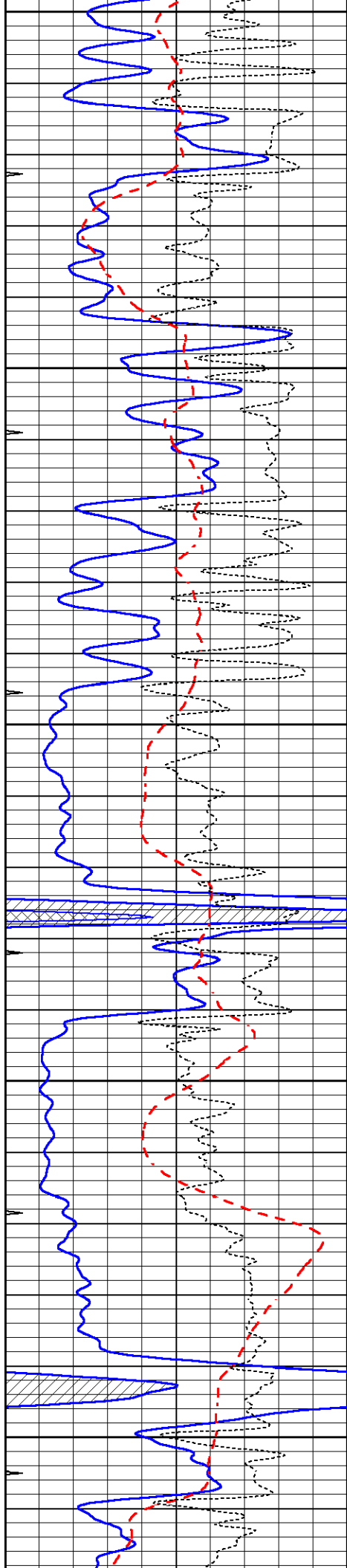
3700

3750

3800

3850





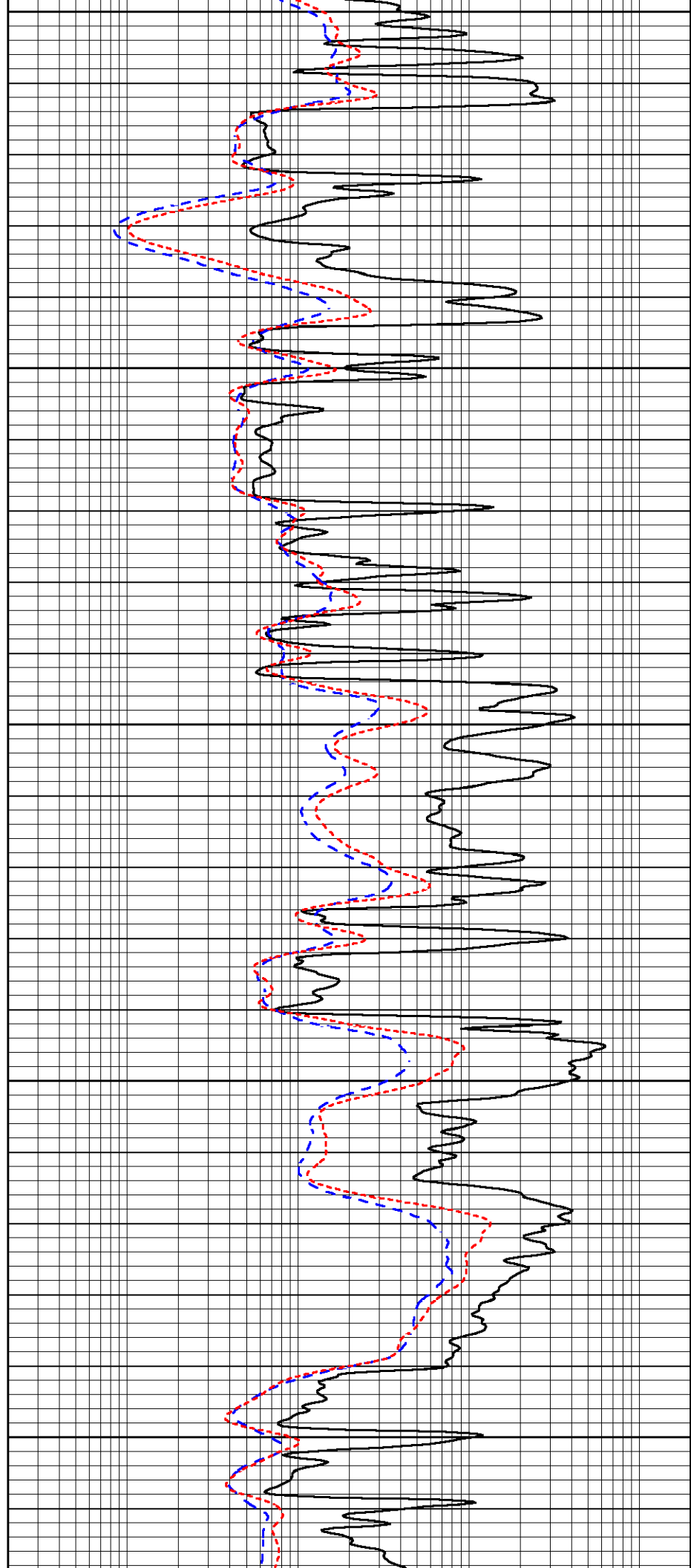
3900

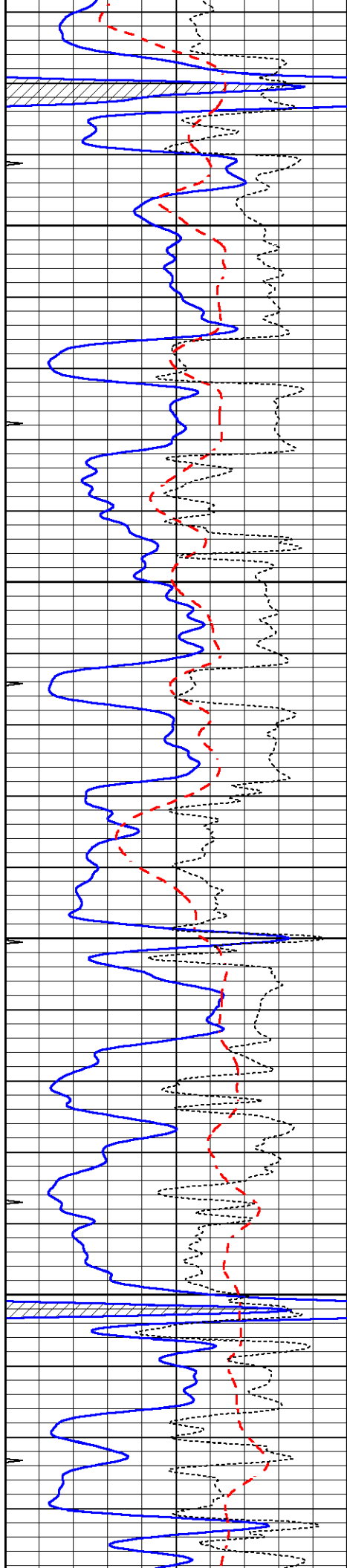
3950

4000

4050

4100



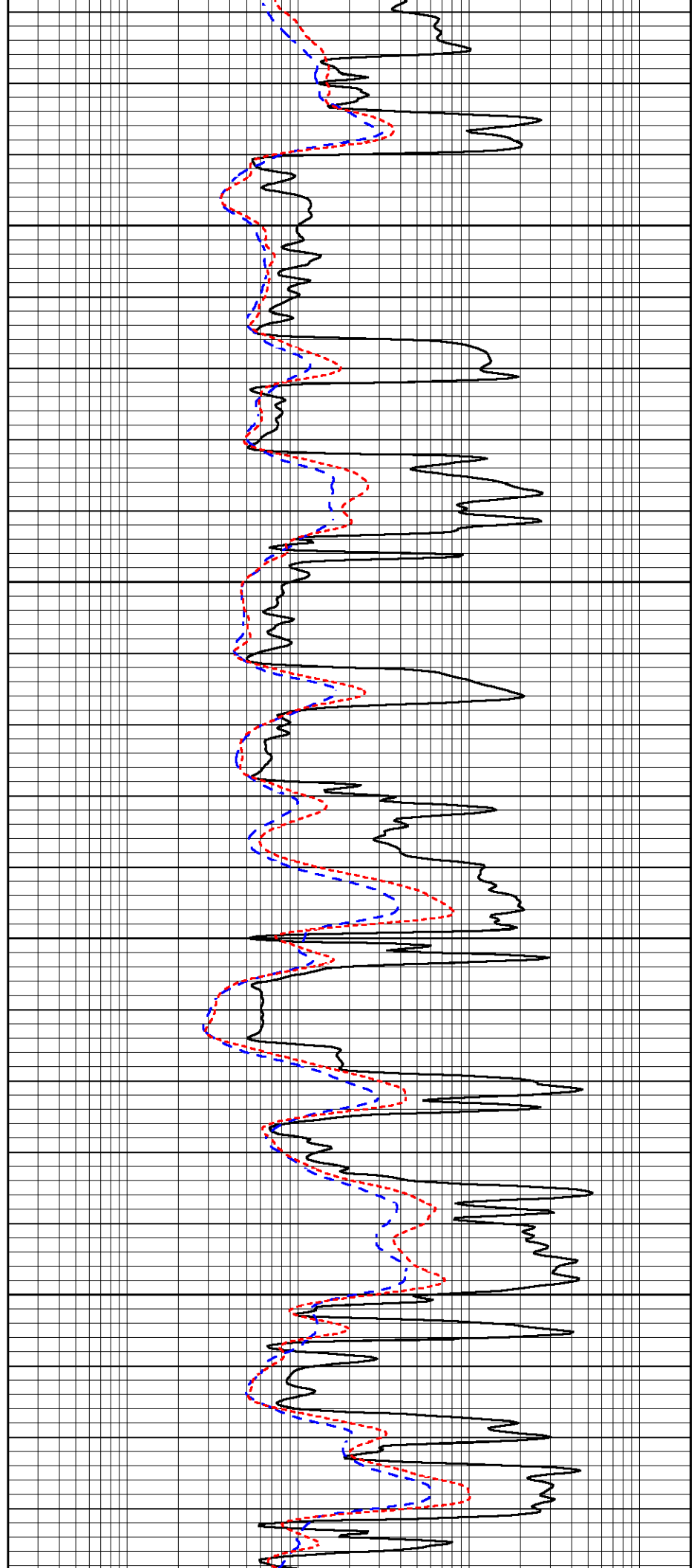


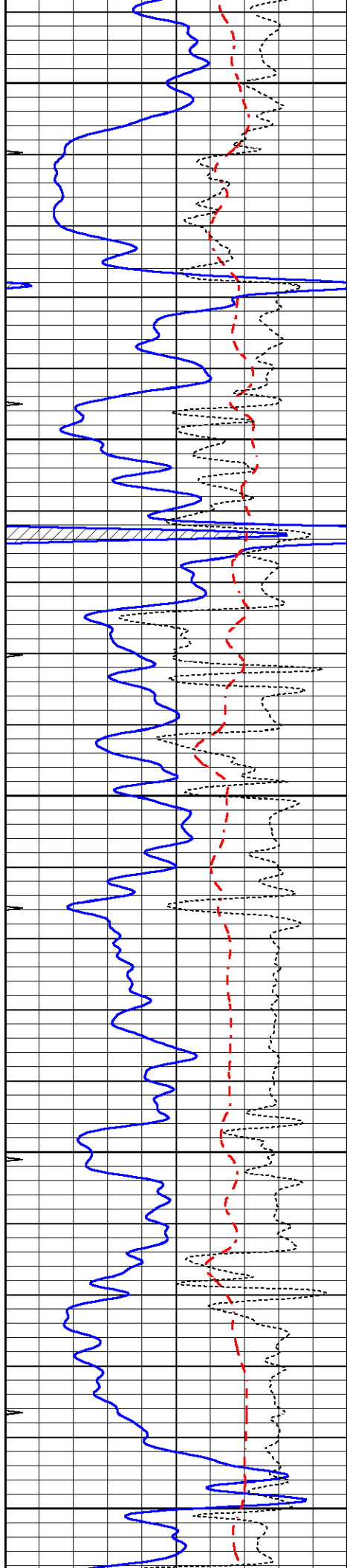
4150

4200

4250

4300





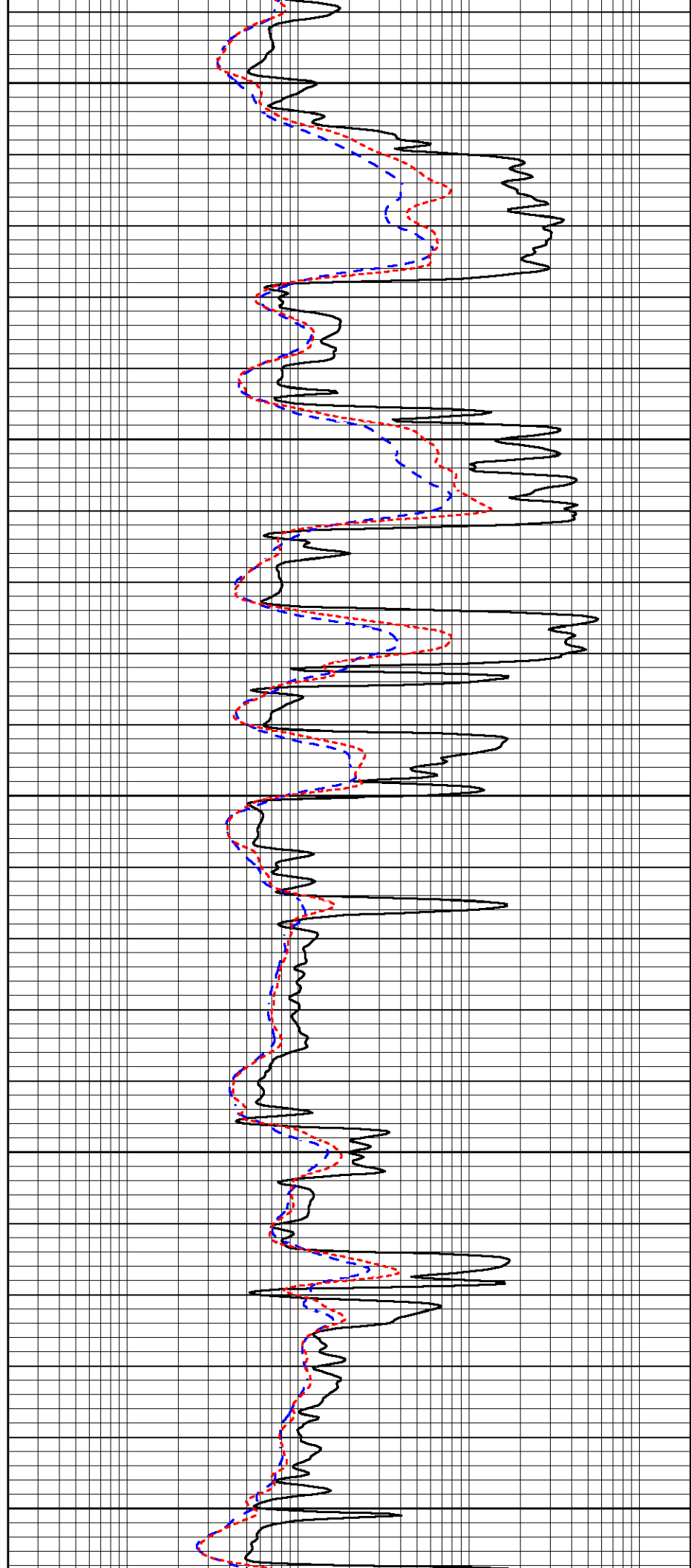
4350

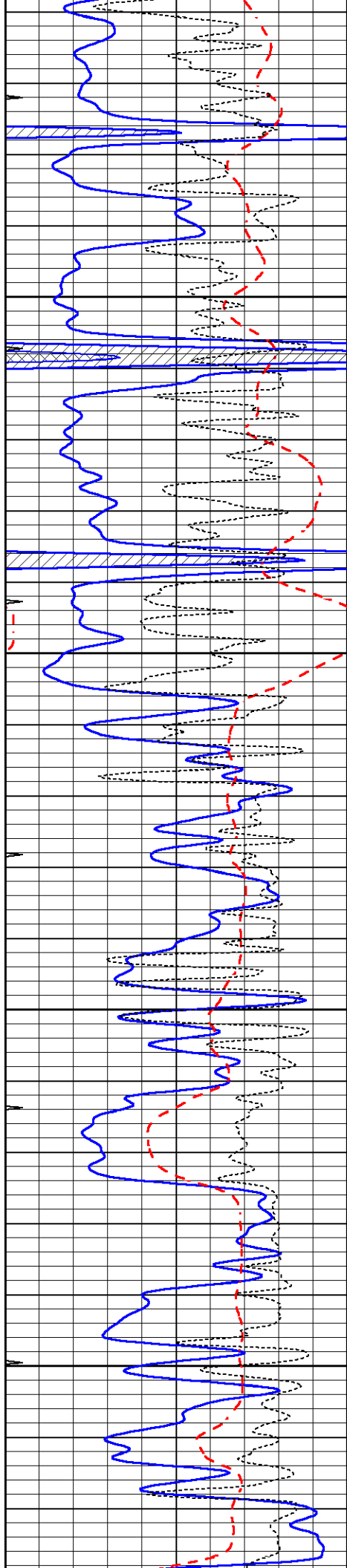
4400

4450

4500

4550



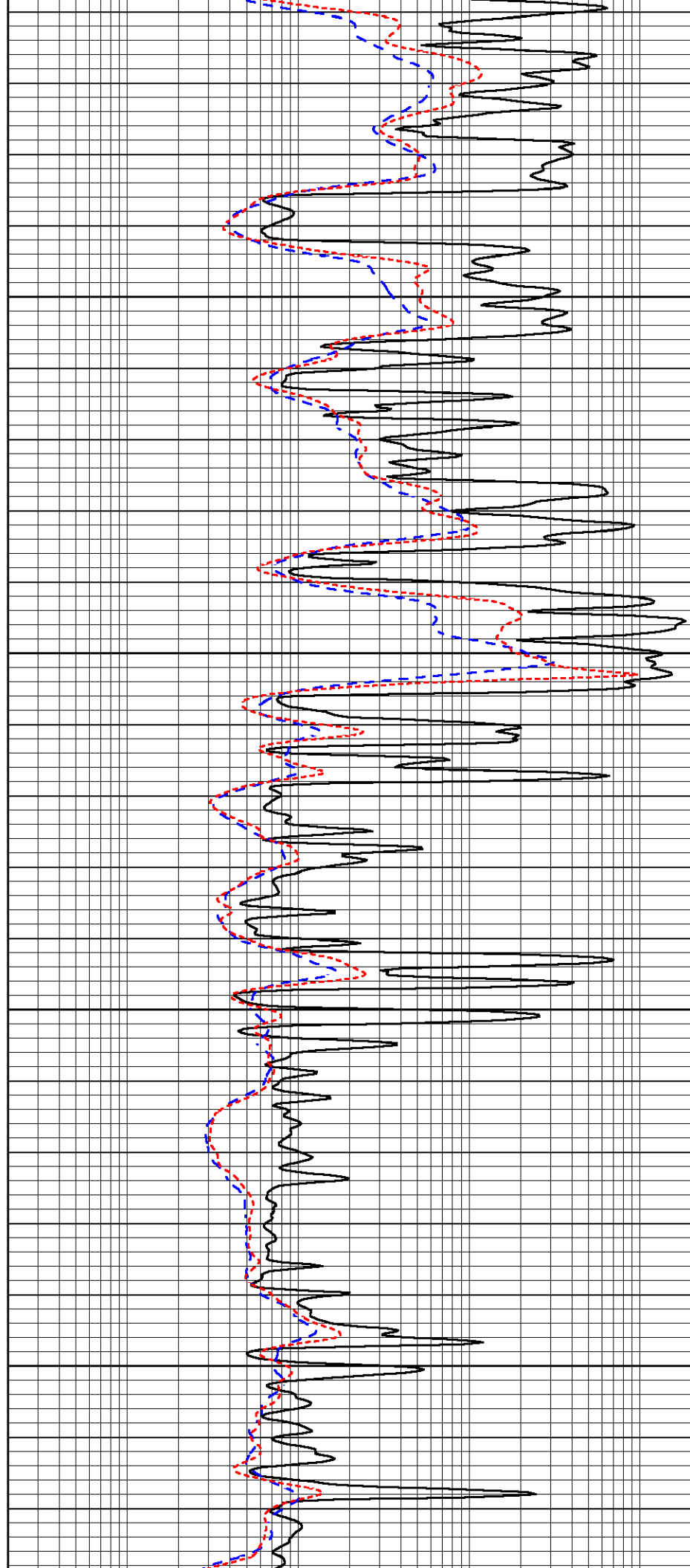


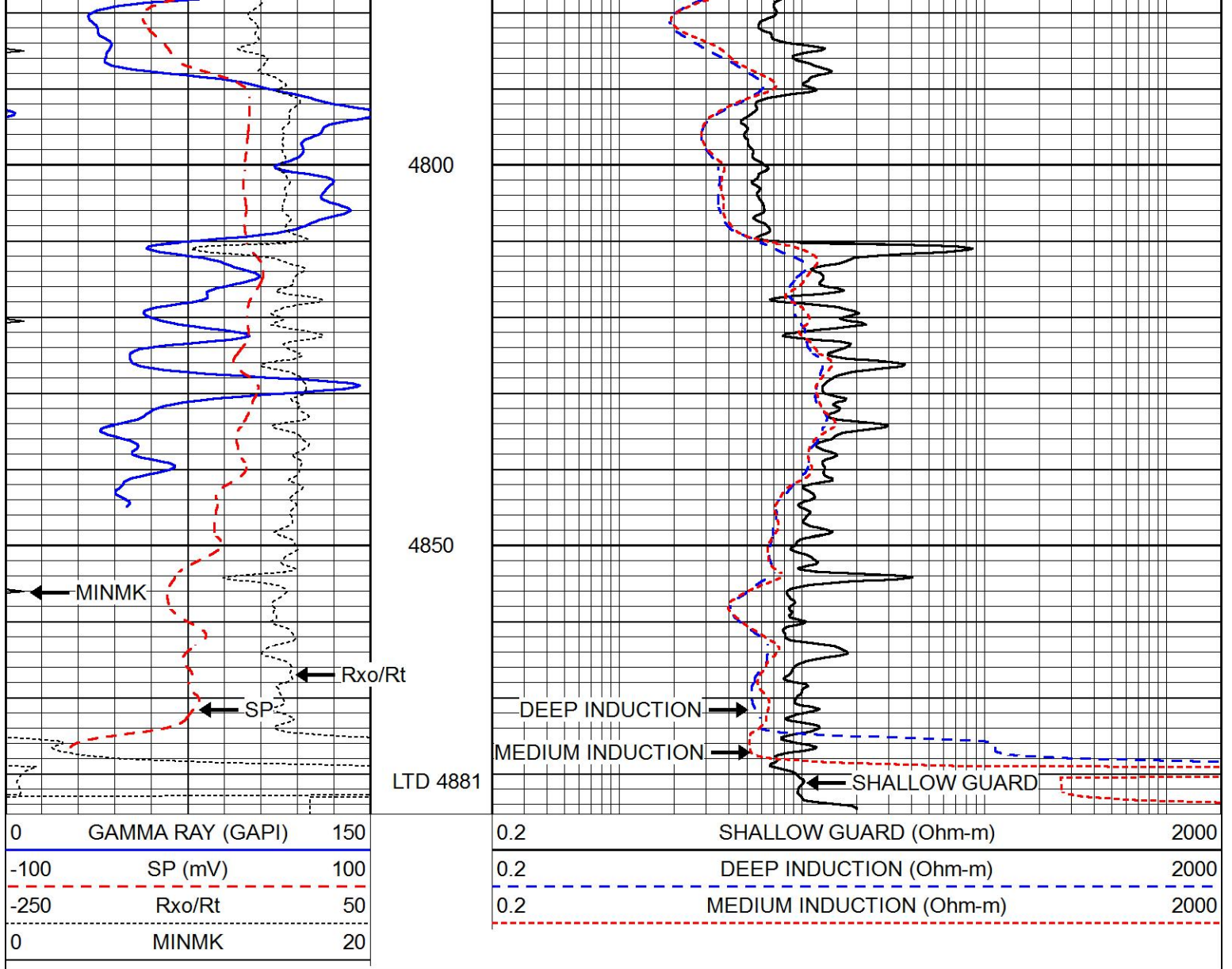
4600

4650

4700

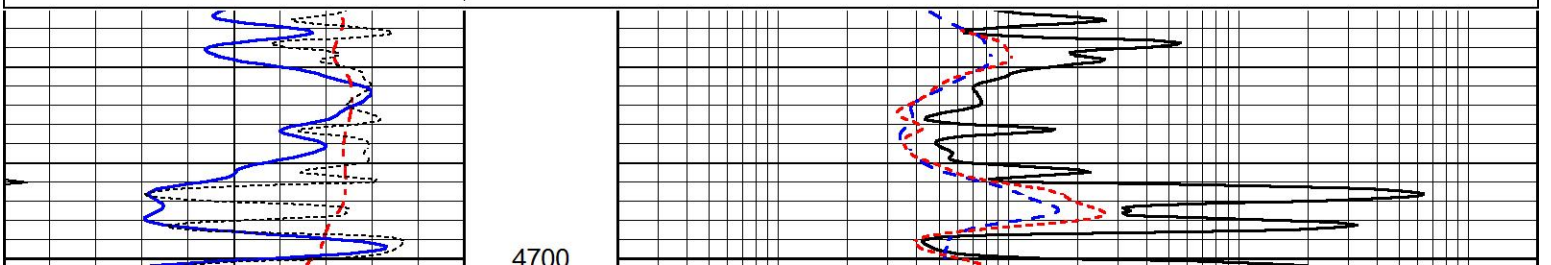
4750

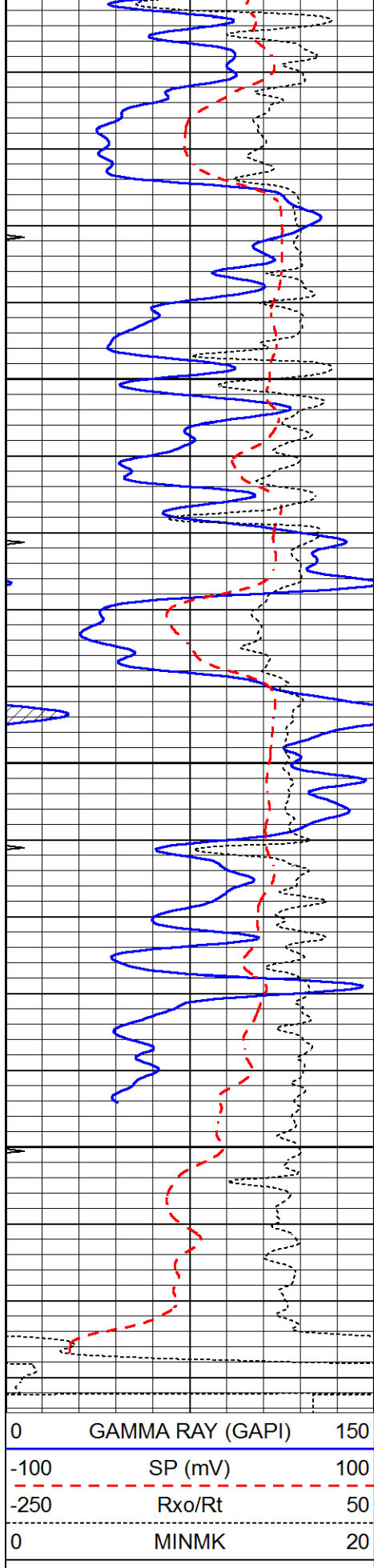




REPEAT SECTION

Database File 5895ddn.db
 Dataset Pathname pass2.1
 Presentation Format _dil
 Dataset Creation Fri Nov 19 21:45:32 2021
 Charted by Depth in Feet scaled 1:240

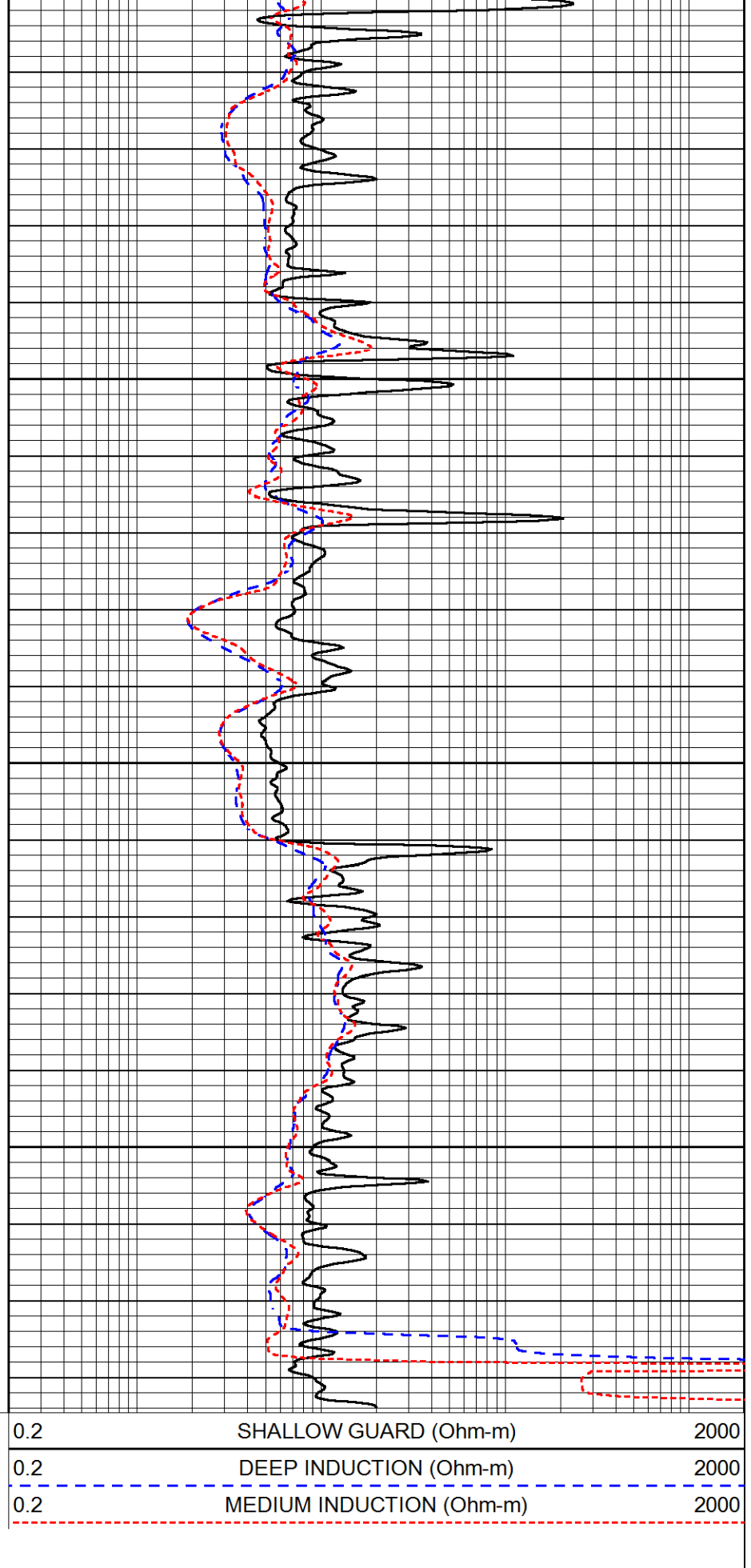




4750

4800

4850



Calibration Report

Database File 5895ddn.db
 Dataset Pathname pass2.1

Dual Induction Calibration Report

Serial-Model: PROBE8-DILG
 Surface Cal Performed: Fri Oct 01 14:24:33 2021
 Downhole Cal Performed: Mon Sep 10 14:28:38 2018
 After Survey Verification Performed: Mon Sep 10 14:28:40 2018

Surface Calibration

Loop:	Readings			References			Results	
	Air	Loop	V	Air	Loop	mmho/m	m	b
Deep	0.015	0.648	V	0.000	400.000	mmho/m	620.000	0.000
Medium	0.029	0.796	V	0.000	464.000	mmho/m	590.000	-15.000
Internal:	Zero	Cal		Zero	Cal		m	b
Deep	0.017	0.657	V	0.000	400.000	mmho/m	625.153	-10.619
Medium	0.016	0.757	V	0.000	464.000	mmho/m	625.992	-9.739

Downhole Calibration

	Readings			References			Results	
	Zero	Cal	mmho/m	Zero	Cal	mmho/m	m'	b'
Deep	0.000	0.000	mmho/m	2.011	405.777	mmho/m	1.000	0.000
Medium	0.000	0.000	mmho/m	7.590	503.393	mmho/m	1.000	0.000
LL3		7.500	V		1500.000	Ohm-m		
		0.000	V		20.000	Ohm-m		
		-7.200	V		3800.000	mmho-m		

After Survey Verification

	Readings			Targets			Results	
	Zero	Cal	mmho/m	Zero	Cal	mmho/m	m'	b'
Deep	0.000	0.000	mmho/m	0.000	0.000	mmho/m	0.000	0.000
Medium	0.000	0.000	mmho/m	0.000	0.000	mmho/m	0.000	0.000
LL3		1.000	Ohm-m		1.000	Ohm-m		
		0.000	Ohm-m		0.000	Ohm-m		
		1.000	mmho-m		1.000	mmho-m		

Litho Density Calibration Report

Serial: 002N Model: PRB

Master Calibration

Performed Tue Mar 10 15:08:00 2020

	Background	Magnesium	Aluminum	Aluminum+Fe	
Window 1	780.1	6981.9	2088.6	1871.2	cps
Window 2	718.6	5898.2	1813.8	1664.1	cps
Window 3	580.0	2989.5	1088.0	1039.1	cps
Window 4	172.8	175.7	175.3	173.5	cps
Long Space	0.0	5179.6	1095.2	945.5	cps
Short Space	1.1	1228.6	821.2	690.4	cps
Rho		1.7100	2.5900	0.0000	g/cc
Pe		2.0000	2.7500	5.7900	
Rib Angle	: 45.5	Rib Slope	: 1.016	Density/Spine Ratio	: 0.548
Spine Angle	: 75.5	Spine Slope	: 3.857	Spine Intercept	: -18.9

Before Survey Verification

Performed Wed Dec 31 18:00:00 1969

Window 1	0.0	0.0	0.0	0.0	cps
Window 2	0.0	0.0	0.0	0.0	cps
Window 3	0.0	0.0	0.0	0.0	cps
Window 4	0.0	0.0	0.0	0.0	cps
Long Space	0.0	0.0	0.0	0.0	cps
Short Space	0.0	0.0	0.0	0.0	cps
Measured Rho		0.0000	0.0000	0.0000	g/cc
Measured Correction		0.0000	0.0000	0.0000	g/cc
Measured Pe			0.0000	0.0000	

After Survey Verification

Performed Wed Dec 31 18:00:00 1969

Window 1	0.0	0.0	0.0	0.0	cps
Window 2	0.0	0.0	0.0	0.0	cps
Window 3	0.0	0.0	0.0	0.0	cps
Window 4	0.0	0.0	0.0	0.0	cps
Long Space	0.0	0.0	0.0	0.0	cps
Short Space	0.0	0.0	0.0	0.0	cps
Measured Rho		0.0000	0.0000	0.0000	g/cc
Measured Correction		0.0000	0.0000	0.0000	g/cc
Measured Pe			0.0000	0.0000	

Compensated Neutron Calibration Report

Serial Number: 6I
Tool Model: G

CALIBRATION

Detector	Readings		Target		Normalization
Short Space	1.00	cps	1.00	cps	1.0000
Long Space	1.00	cps	1.00	cps	1.0000

PRE-SURVEY VERIFICATION

	Detector	Readings	Measured	Target
1)	Short Space	cps		
	Long Space	cps	pu	pu
2)	Short Space	cps		
	Long Space	cps	pu	
3)	Short Space	cps		
	Long Space	cps	pu	

POST-SURVEY VERIFICATION

	Detector	Readings	Measured	Target
1)	Short Space	cps		
	Long Space	cps	pu	pu
2)	Short Space	cps		
	Long Space	cps	pu	pu
3)	Short Space	cps		
	Long Space	cps	pu	pu

Gamma Ray Calibration Report

Serial Number: GR6
Tool Model: OPEN

Performed:

Thu Jul 30 20:04:35 2020

Calibrator Value:

150.0

GAPI

Background Reading:

0.0

cps

Calibrator Reading:

276.0

cps

Sensitivity:

0.7500

GAPI/cps