



**COMPENSATED
DENSITY/NEUTRON
LOG**

Company DOWNING-NELSON OIL CO., INC.

Well BUCKNER #1-19

Field UNNAMED

County RAWLINS State KANSAS

Location: API #: 15-153-21273-0000

1060' FNL & 1880' FEL

SEC 19 TWP 5S RGE 36W

Permanent Datum GROUND LEVEL Elevation 3288

Log Measured From KELLY BUSHING 8' A.G.L.

Drilling Measured From KELLY BUSHING

Other Services
CDL/CNL
ML/SO

Elevation

K.B. 3296
D.F. 3294
G.L. 3288

Date	11/19/21
Run Number	ONE
Depth Driller	4880
Depth Logger	4881
Bottom Logged Interval	4861
Top Log Interval	3500
Casing Driller	8 5/8" @ 480
Casing Logger	480
Bit Size	7 7/8"
Type Fluid in Hole	CHEMICAL MUD
Density / Viscosity	9.4/70
pH / Fluid Loss	11.0/7.8
Source of Sample	FLOWLINE
Rm @ Meas. Temp	2.8@ 60F
Rmf @ Meas. Temp	2.1@ 60F
Rmc @ Meas. Temp	3.36 @ 60F
Source of Rmf / Rmc	MEASURED
Rm @ BHT	1.35@ 124F
Time Circulation Stopped	2 HOURS
Time Logger on Bottom	////
Maximum Recorded Temperature	124F
Equipment Number	1523
Location	HAYS, KANSAS
Recorded By	GUS PFANENSTIEL
Witnessed By	MARC DOWNING

<<< Fold Here >>>

All interpretations are opinions based on inferences from electrical or other measurements and we cannot and do not guarantee the accuracy or correctness of any interpretation, and we shall not, except in the case of gross or willful negligence on our part, be liable or responsible for any loss, costs, damages, or expenses incurred or sustained by anyone resulting from any interpretation made by any of our officers, agents or employees. These interpretations are also subject to our general terms and conditions set out in our current Price Schedule.

Comments

THANK YOU FOR USING ELI WIRELINE, HAYS, KS. (785) 628-6395

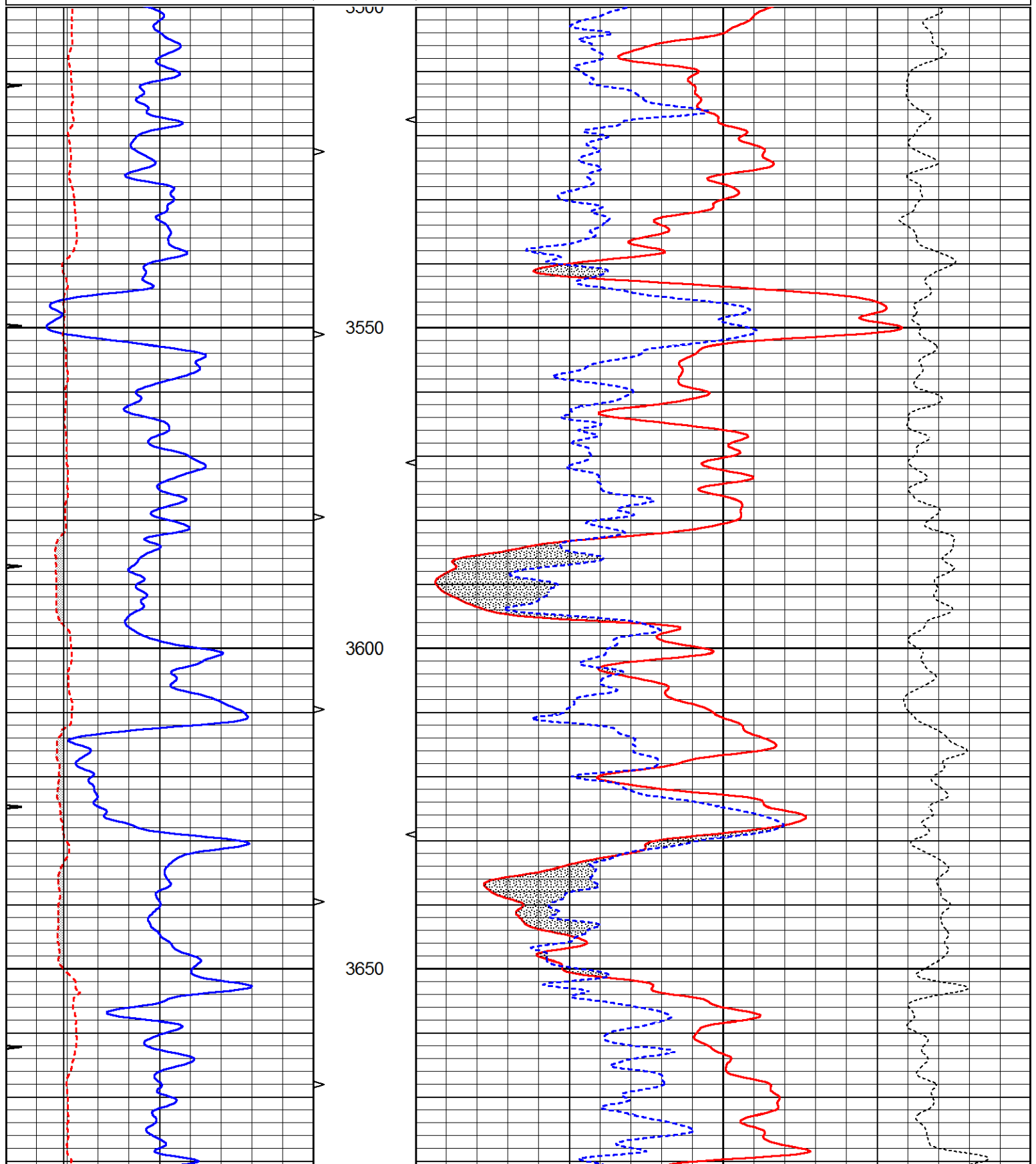
DIRECTIONS: BREWSTER NORTH TO CURVES 1 WEST,
3.5 NORTH, WEST INTO.

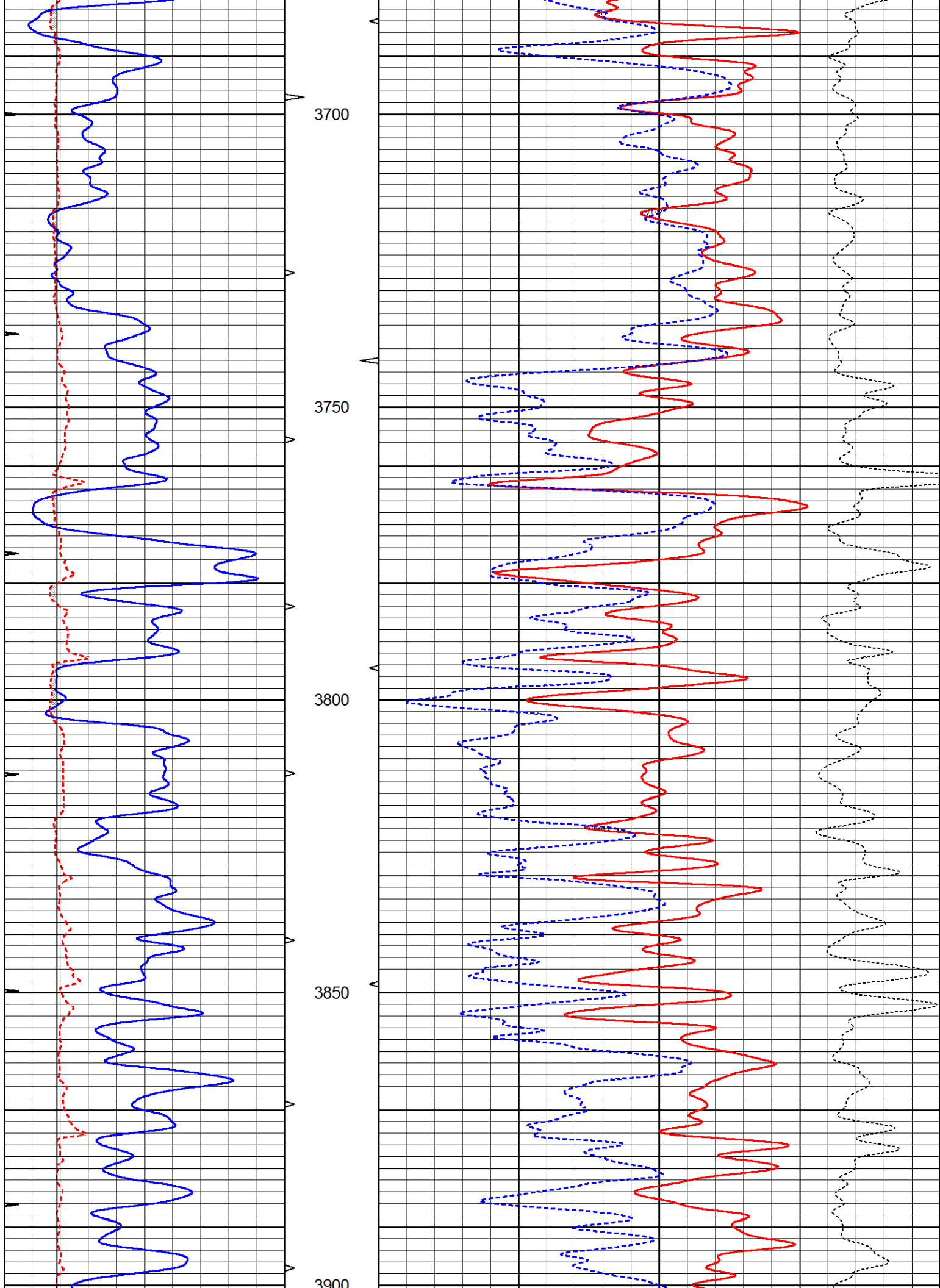


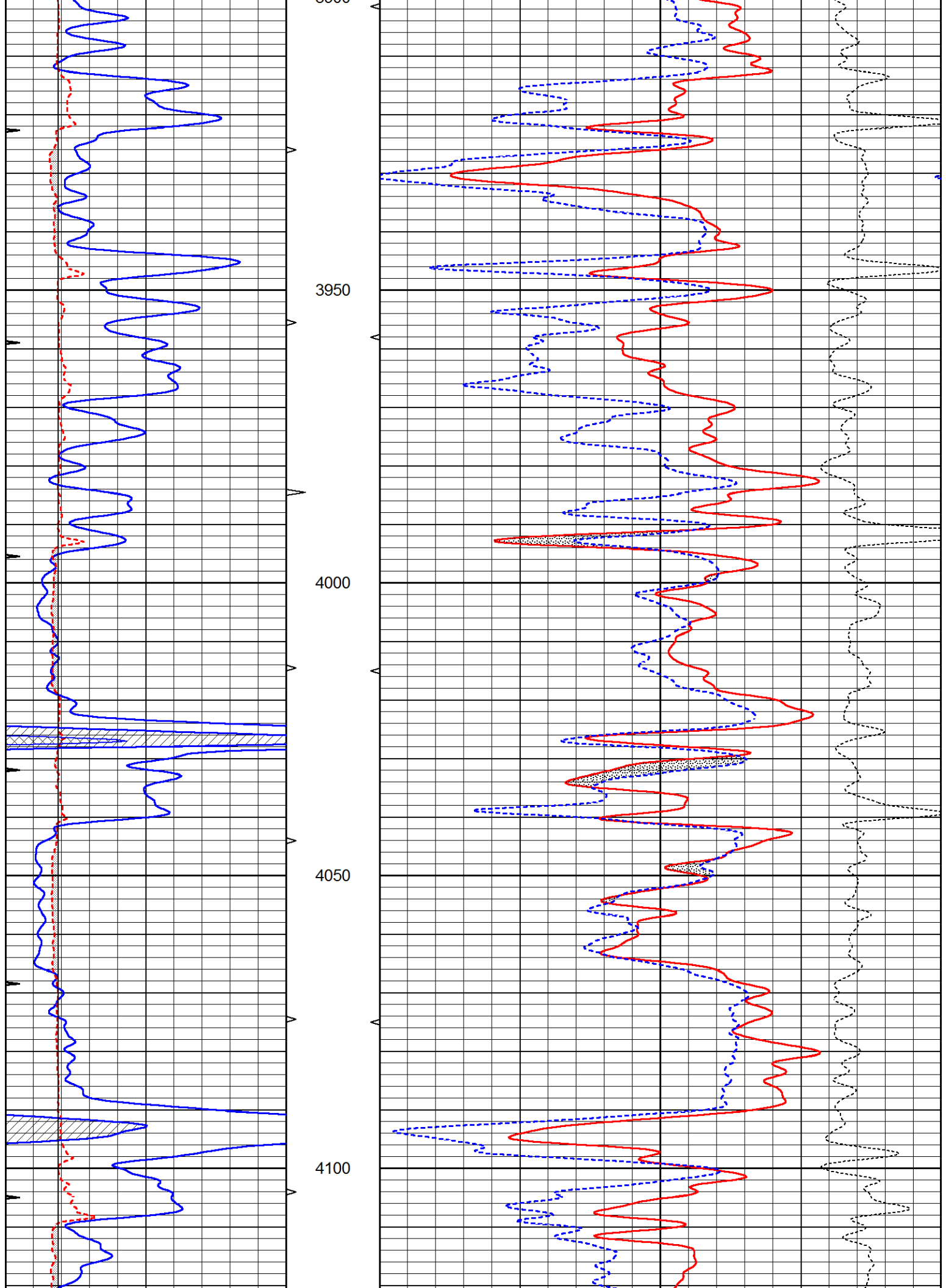
MAIN PASS

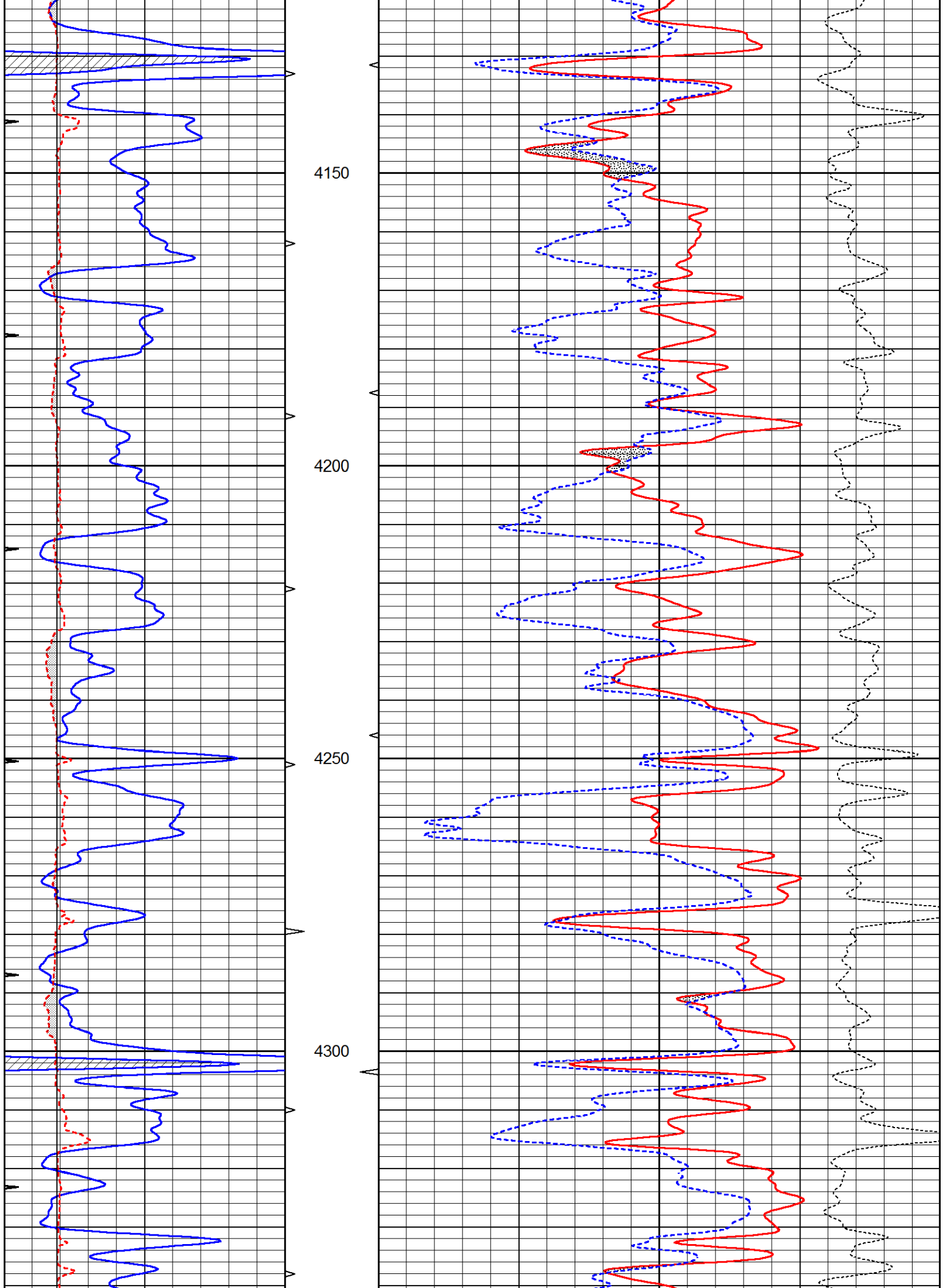
Database File 5895ddn.db
 Dataset Pathname pass3.1
 Presentation Format den_neu
 Dataset Creation Fri Nov 19 21:38:51 2021
 Charted by Depth in Feet scaled 1:240

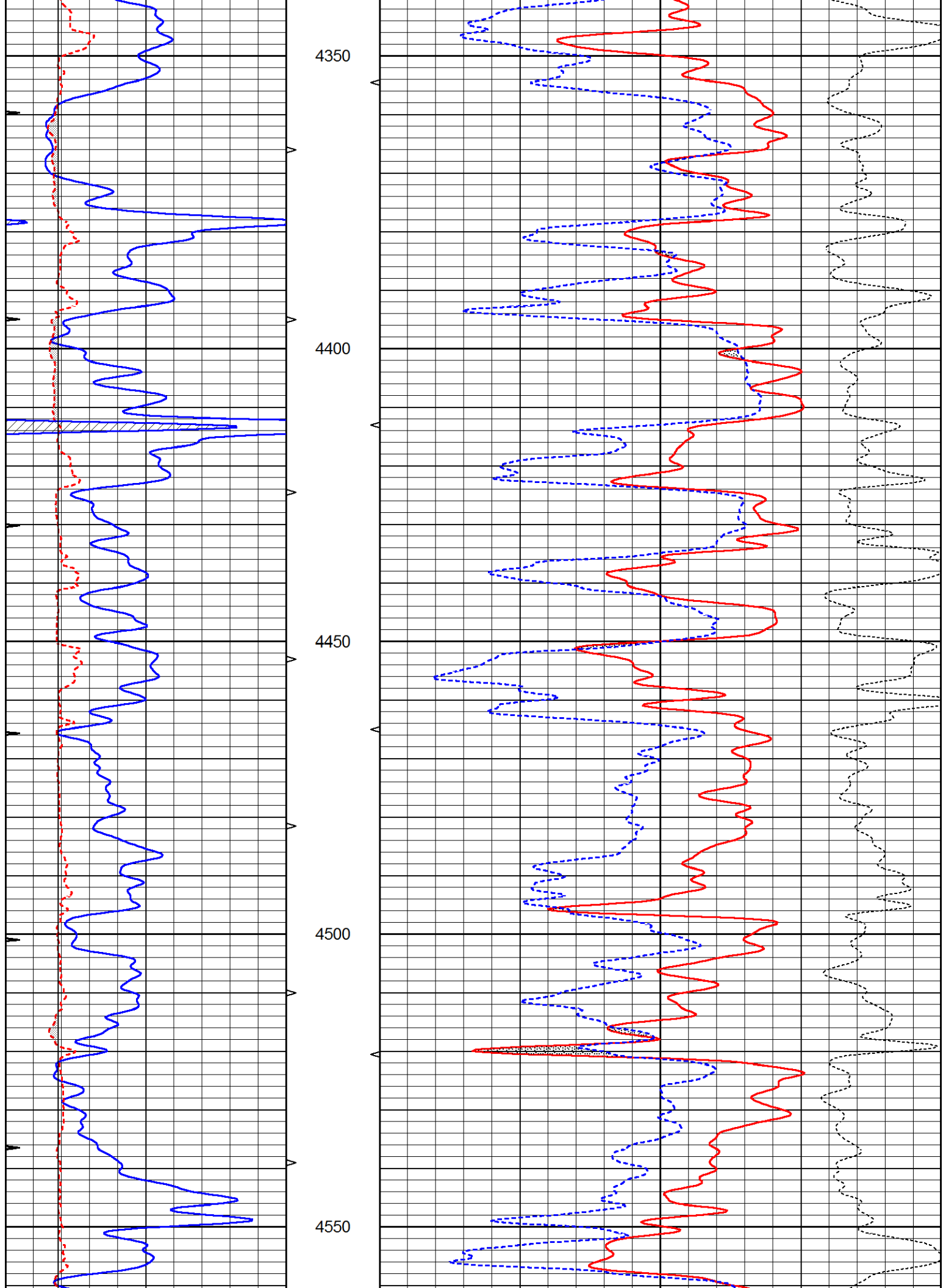
0	GAMMA RAY (GAPI)	150	ABHV	30	COMPENSATED DENSITY (pu)	-10
6	CALIPER (in)	16	10 (ft3)	0	COMPENSATED NEUTRON (pu)	-10
0	MINMK	20	TBHV		-0.25 CORRECTION (g/cc)	0.25
			0 (ft3)	10		

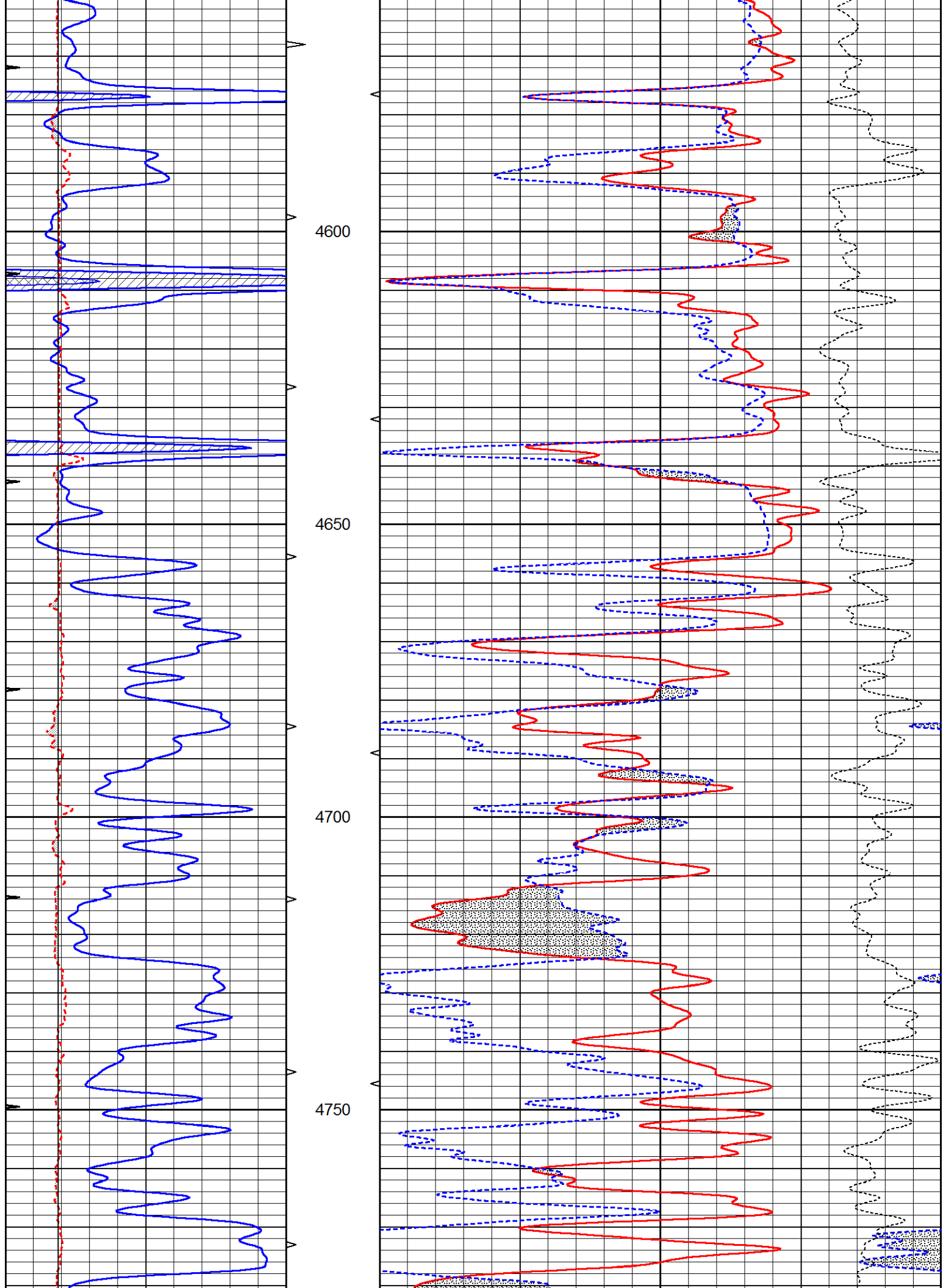


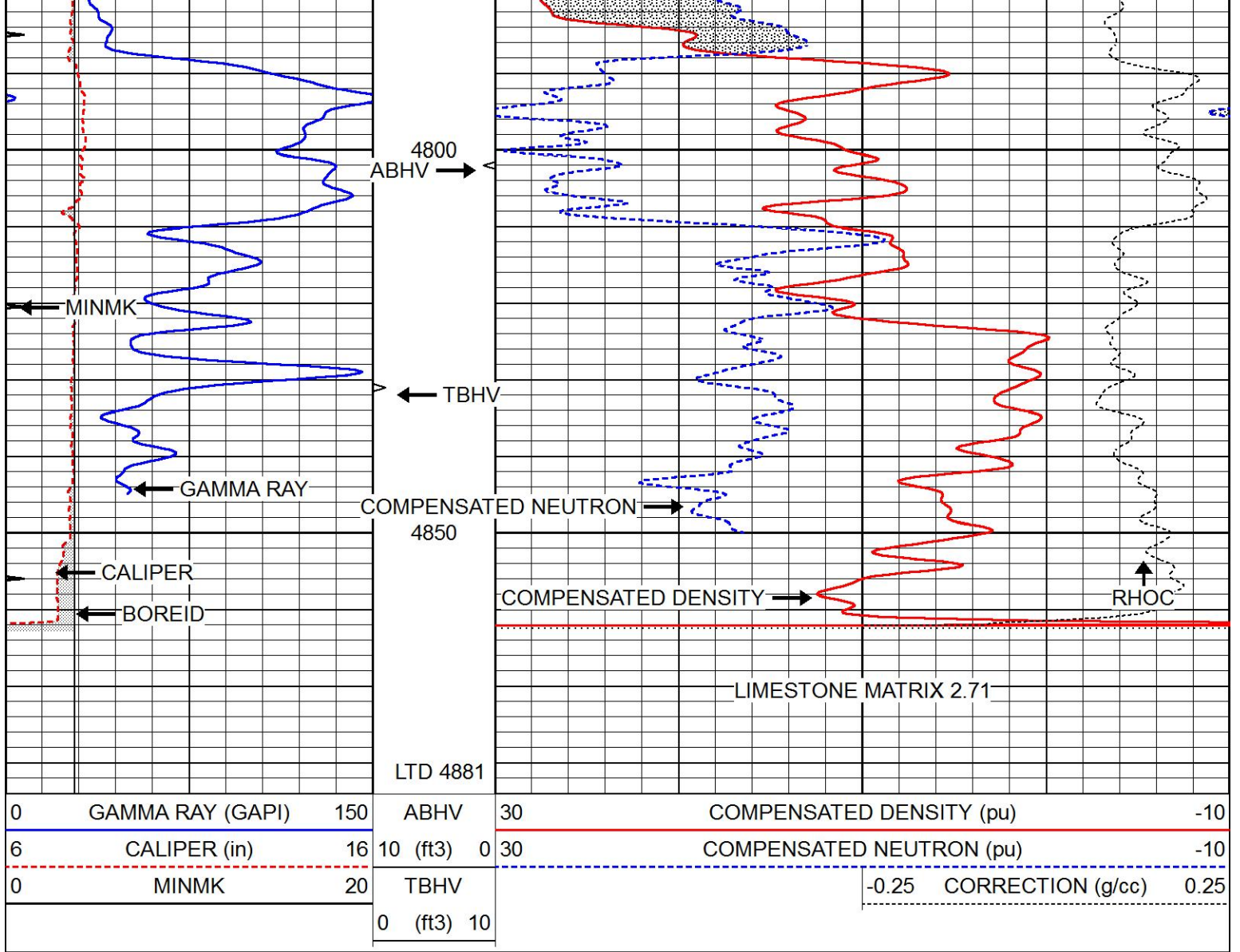








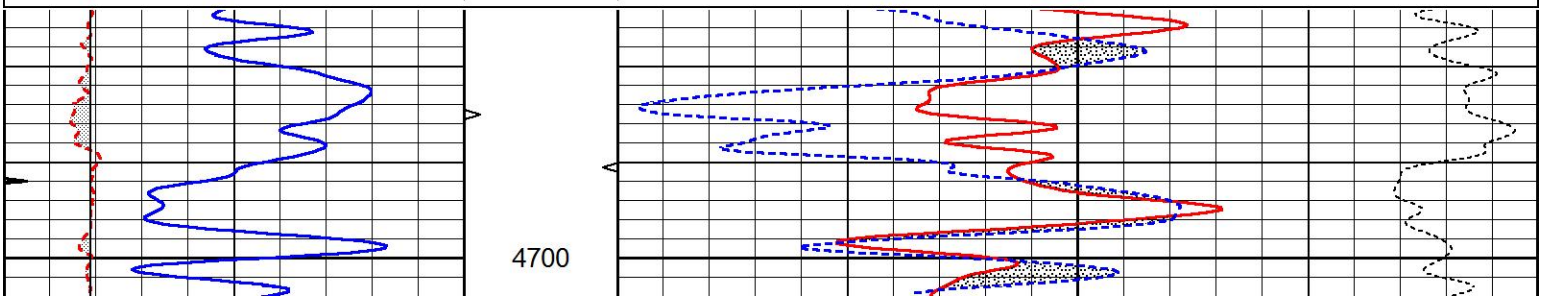


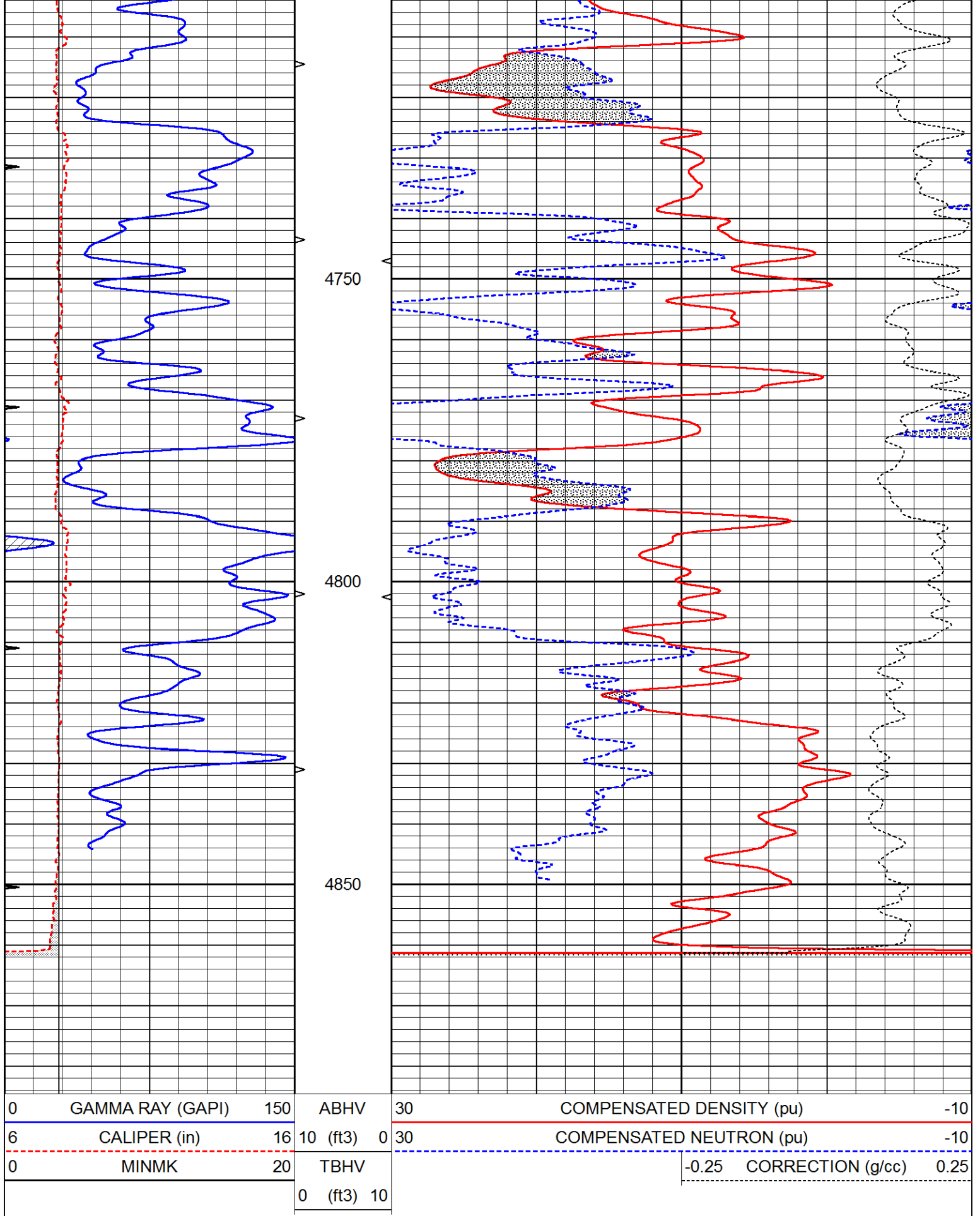


REPEAT SECTION

Database File 5895ddn.db
 Dataset Pathname pass2.1
 Presentation Format den_neu
 Dataset Creation Fri Nov 19 21:45:32 2021
 Charted by Depth in Feet scaled 1:240

0	GAMMA RAY (GAPI)	150	ABHV	30	COMPENSATED DENSITY (pu)	-10
6	CALIPER (in)	16	10 (ft3)	0 30	COMPENSATED NEUTRON (pu)	-10
0	MINMK	20	TBHV		-0.25 CORRECTION (g/cc)	0.25
			0 (ft3)	10		





Calibration Report

Database File 5895ddn.db
 Dataset Pathname pass2.1
 Dataset Creation Fri Nov 19 21:45:32 2021

Dual Induction Calibration Report

Serial-Model:	PROBE8-DILG
Surface Cal Performed:	Fri Oct 01 14:24:33 2021
Downhole Cal Performed:	Mon Sep 10 14:28:38 2018
After Survey Verification Performed:	Mon Sep 10 14:28:40 2018

Surface Calibration

Loop:	Readings			References			Results	
	Air	Loop		Air	Loop		m	b
Deep	0.015	0.648	V	0.000	400.000	mmho/m	620.000	0.000
Medium	0.029	0.796	V	0.000	464.000	mmho/m	590.000	-15.000
Internal:	Zero	Cal		Zero	Cal		m	b
Deep	0.017	0.657	V	0.000	400.000	mmho/m	625.153	-10.619
Medium	0.016	0.757	V	0.000	464.000	mmho/m	625.992	-9.739

Downhole Calibration

	Readings			References			Results	
	Zero	Cal		Zero	Cal		m'	b'
Deep	0.000	0.000	mmho/m	2.011	405.777	mmho/m	1.000	0.000
Medium	0.000	0.000	mmho/m	7.590	503.393	mmho/m	1.000	0.000
LL3		7.500	V		1500.000	Ohm-m		
		0.000	V		20.000	Ohm-m		
		-7.200	V		3800.000	mmho-m		

After Survey Verification

	Readings			Targets			Results	
	Zero	Cal		Zero	Cal		m'	b'
Deep	0.000	0.000	mmho/m	0.000	0.000	mmho/m	0.000	0.000
Medium	0.000	0.000	mmho/m	0.000	0.000	mmho/m	0.000	0.000
LL3		1.000	Ohm-m		1.000	Ohm-m		
		0.000	Ohm-m		0.000	Ohm-m		
		1.000	mmho-m		1.000	mmho-m		

Litho Density Calibration Report

Serial: 002N Model: PRB

Master Calibration

Performed Tue Mar 10 15:08:00 2020

	Background	Magnesium	Aluminum	Aluminum+Fe	
Window 1	780.1	6981.9	2088.6	1871.2	cps
Window 2	718.6	5898.2	1813.8	1664.1	cps
Window 3	580.0	2989.5	1088.0	1039.1	cps
Window 4	172.8	175.7	175.3	173.5	cps
Long Space	0.0	5179.6	1095.2	945.5	cps
Short Space	1.1	1228.6	821.2	690.4	cps
Rho		1.7100	2.5900	0.0000	g/cc
Pe		2.0000	2.7500	5.7900	
Rib Angle	: 45.5	Rib Slope	: 1.016	Density/Spine Ratio	: 0.548
Spine Angle	: 75.5	Spine Slope	: 3.857	Spine Intercept	: -18.9

Before Survey Verification

Performed Wed Dec 31 18:00:00 1969

Window 1	0.0	0.0	0.0	0.0	cps
----------	-----	-----	-----	-----	-----

Window 2	0.0	0.0	0.0	0.0	cps
Window 3	0.0	0.0	0.0	0.0	cps
Window 4	0.0	0.0	0.0	0.0	cps
Long Space	0.0	0.0	0.0	0.0	cps
Short Space	0.0	0.0	0.0	0.0	cps
Measured Rho		0.0000	0.0000	0.0000	g/cc
Measured Correction		0.0000	0.0000	0.0000	g/cc
Measured Pe			0.0000	0.0000	

After Survey Verification

Performed Wed Dec 31 18:00:00 1969

Window 1	0.0	0.0	0.0	0.0	cps
Window 2	0.0	0.0	0.0	0.0	cps
Window 3	0.0	0.0	0.0	0.0	cps
Window 4	0.0	0.0	0.0	0.0	cps
Long Space	0.0	0.0	0.0	0.0	cps
Short Space	0.0	0.0	0.0	0.0	cps
Measured Rho		0.0000	0.0000	0.0000	g/cc
Measured Correction		0.0000	0.0000	0.0000	g/cc
Measured Pe			0.0000	0.0000	

Compensated Neutron Calibration Report

Serial Number: 6I
Tool Model: G

CALIBRATION

Detector	Readings	Target	Normalization
Short Space	1.00 cps	1.00 cps	1.0000
Long Space	1.00 cps	1.00 cps	1.0000

PRE-SURVEY VERIFICATION

Detector	Readings	Measured	Target
1) Short Space	cps		
Long Space	cps	pu	pu
2) Short Space	cps		
Long Space	cps	pu	
3) Short Space	cps		
Long Space	cps	pu	

POST-SURVEY VERIFICATION

Detector	Readings	Measured	Target
1) Short Space	cps		
Long Space	cps	pu	pu
2) Short Space	cps		
Long Space	cps	pu	pu
3) Short Space	cps		
Long Space	cps	pu	pu

Gamma Ray Calibration Report

Serial Number: GR6
Tool Model: OPEN
Performed: Thu Jul 30 20:04:35 2020

Calibrator Value:	150.0	GAPI
Background Reading:	0.0	cps
Calibrator Reading:	276.0	cps
Sensitivity:	0.7500	GAPI/cps