

SONIC
LOG



Company DOWNING-NELSON OIL CO., INC.

Well BUCKNER #1-19

Field UNNAMED

County RAWLINS State KANSAS

Location: API #: 15-153-21273-0000

1060' FNL & 1880' FEL

SEC 19 TWP 5S RGE 36W

Permanent Datum GROUND LEVEL Elevation 3288

Log Measured From KELLY BUSHING 8' A.G.L.

Drilling Measured From KELLY BUSHING

Other Services
CDL/CNL
DIL/ML
Elevation
K.B. 3296
D.F. 3294
G.L. 3288

Date	11/19/21
Run Number	TWO
Depth Driller	4880
Depth Logger	4881
Bottom Logged Interval	4871
Top Log Interval	00
Casing Driller	8 5/8" @ 480
Casing Logger	480
Bit Size	7 7/8"
Type Fluid in Hole	CHEMICAL MUD
Density / Viscosity	9.4/70
pH / Fluid Loss	11.0/7.8
Source of Sample	FLOWLINE
Rm @ Meas. Temp	2.8@ 60F
Rmf @ Meas. Temp	2.1@ 60F
Rmc @ Meas. Temp	3.36 @ 60F
Source of Rmf / Rmc	MEASURED
Rm @ BHT	1.35@ 124F
Time Circulation Stopped	2 HOURS
Time Logger on Bottom	////
Maximum Recorded Temperature	124F
Equipment Number	1523
Location	HAYS, KANSAS
Recorded By	GUS PFANENSTIEL
Witnessed By	MARC DOWNING

<<< Fold Here >>>

All interpretations are opinions based on inferences from electrical or other measurements and we cannot and do not guarantee the accuracy or correctness of any interpretation, and we shall not, except in the case of gross or willful negligence on our part, be liable or responsible for any loss, costs, damages, or expenses incurred or sustained by anyone resulting from any interpretation made by any of our officers, agents or employees. These interpretations are also subject to our general terms and conditions set out in our current Price Schedule.

Comments

THANK YOU FOR USING ELI WIRELINE, HAYS, KS. (785) 628-6395

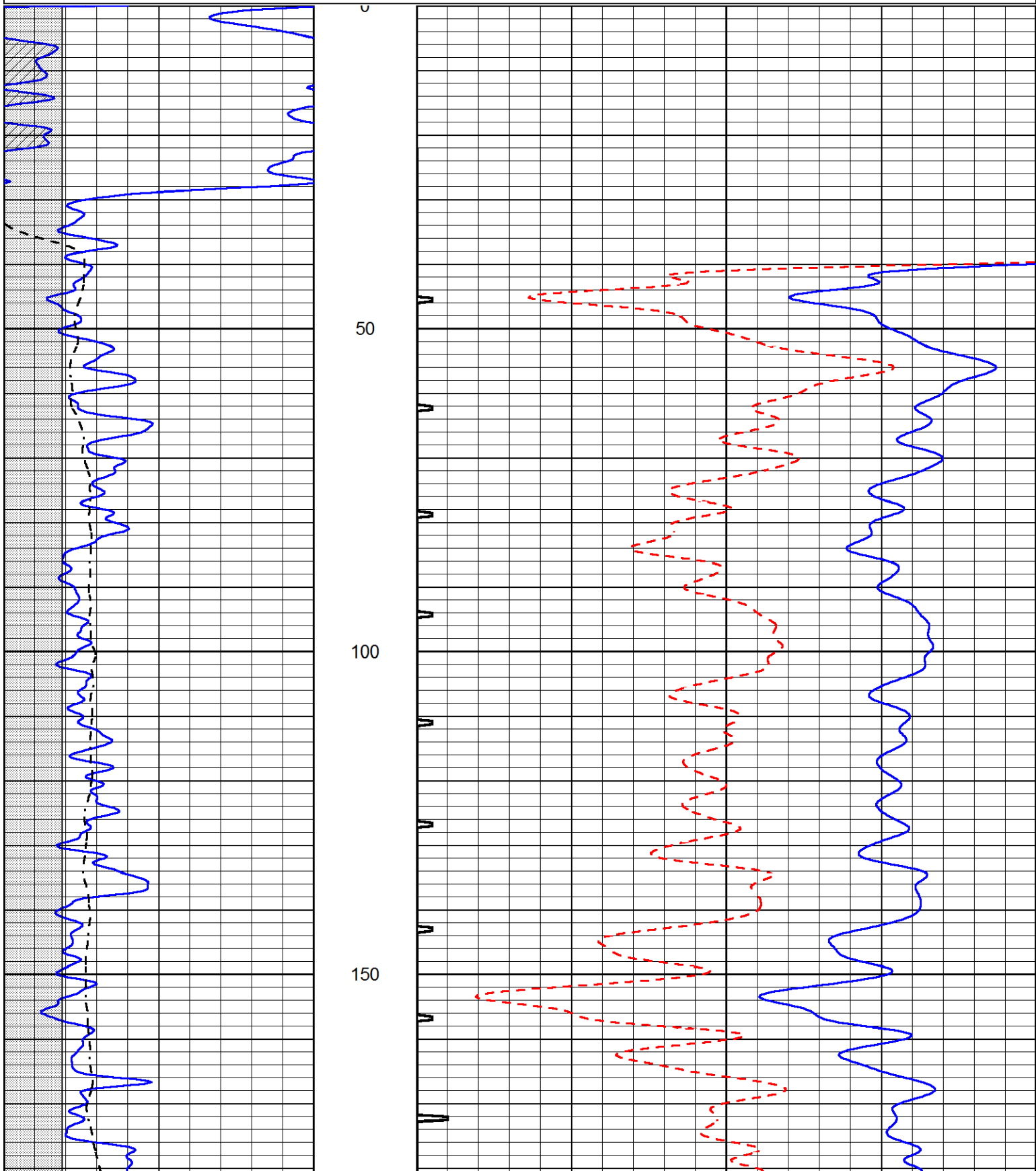
DIRECTIONS: BREWSTER NORTH TO CURVES 1 WEST,
3.5 NORTH, WEST INTO.

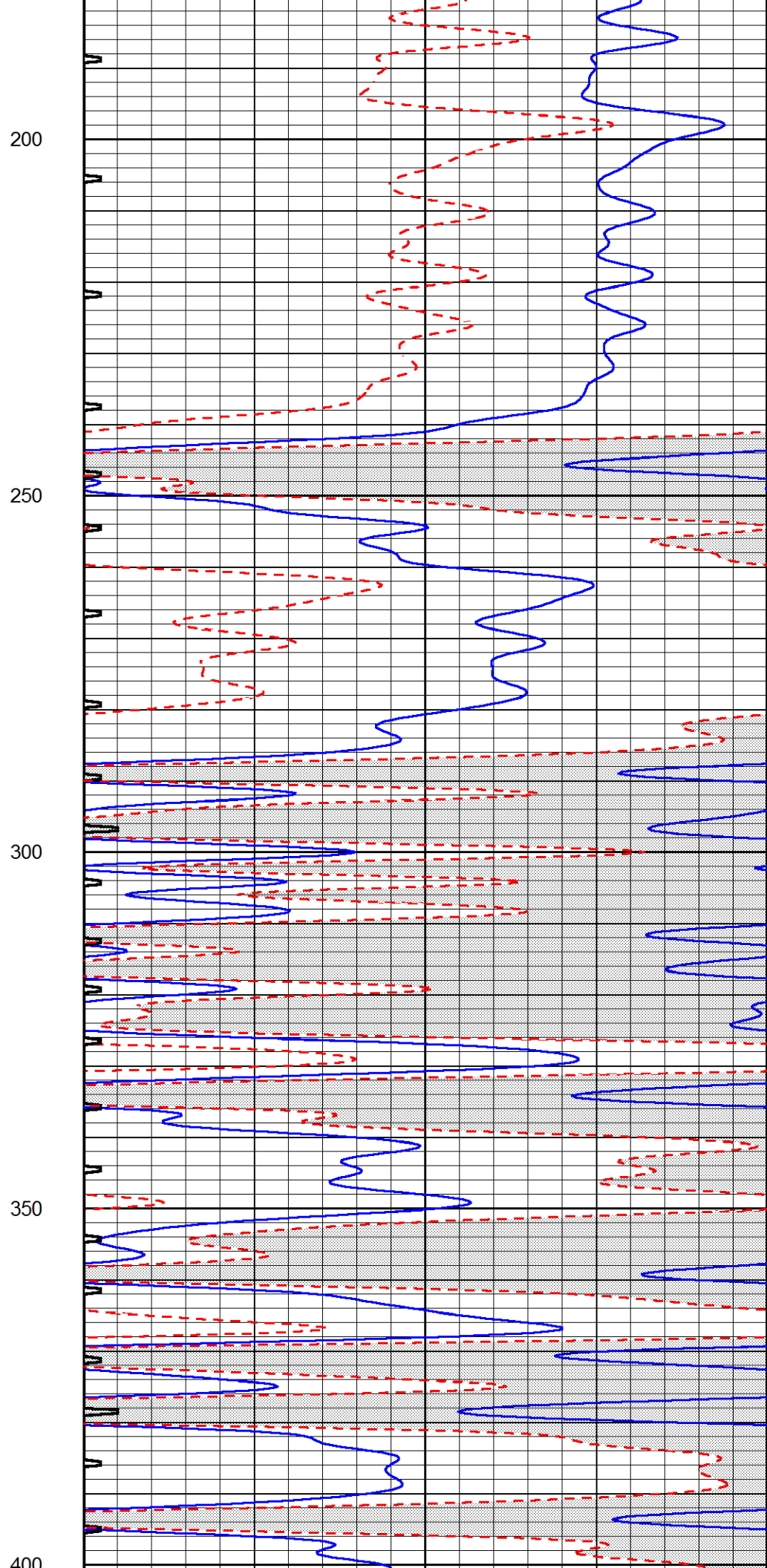
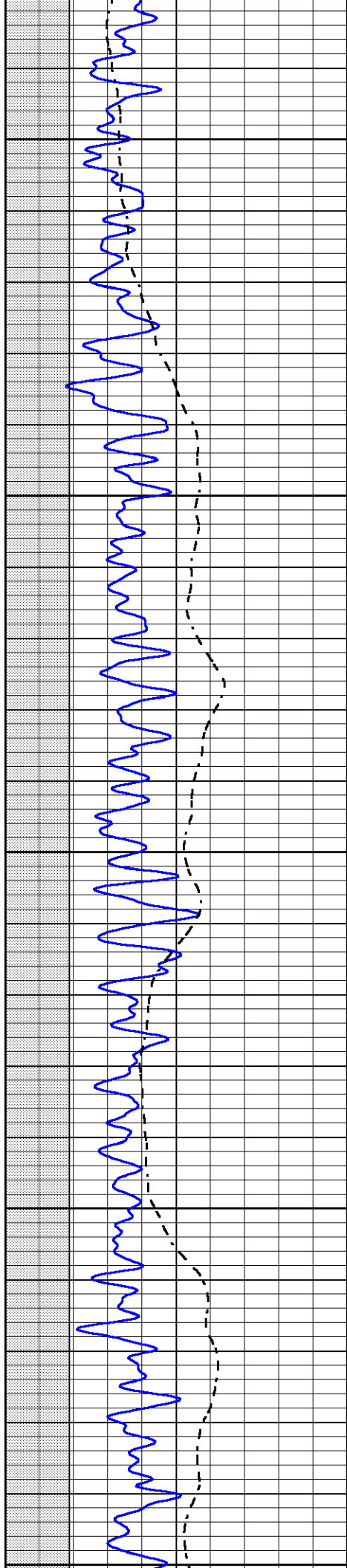


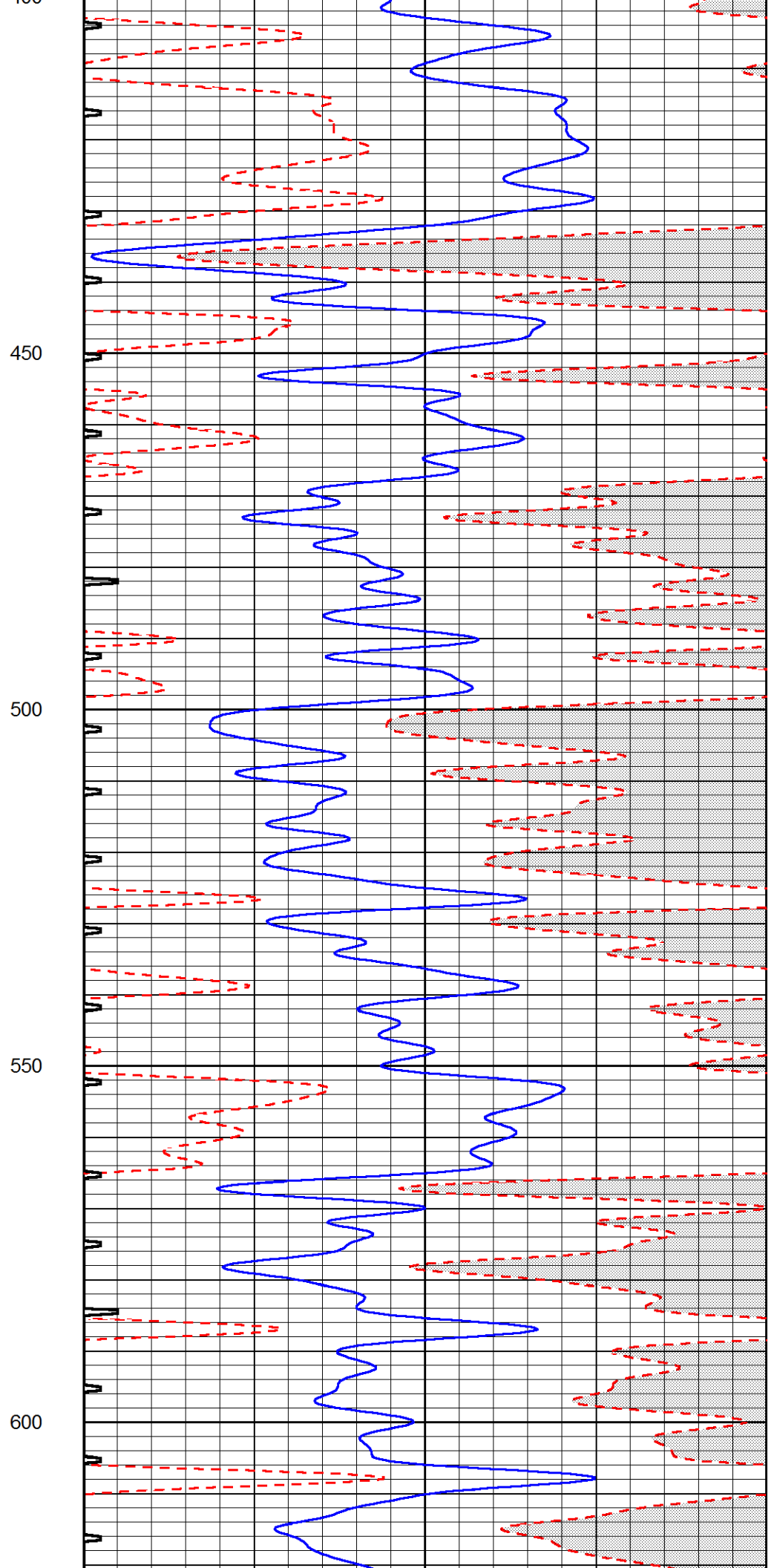
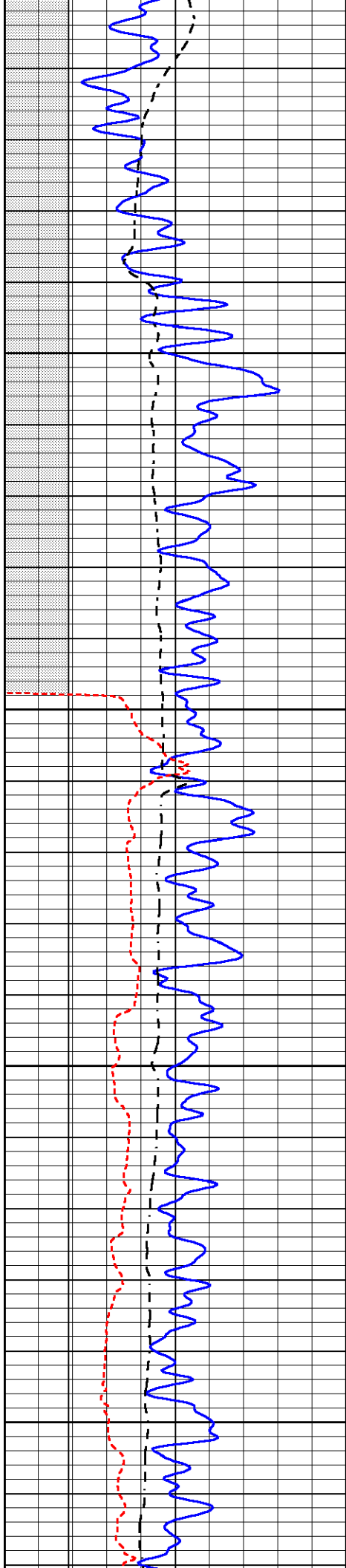
MAIN PASS

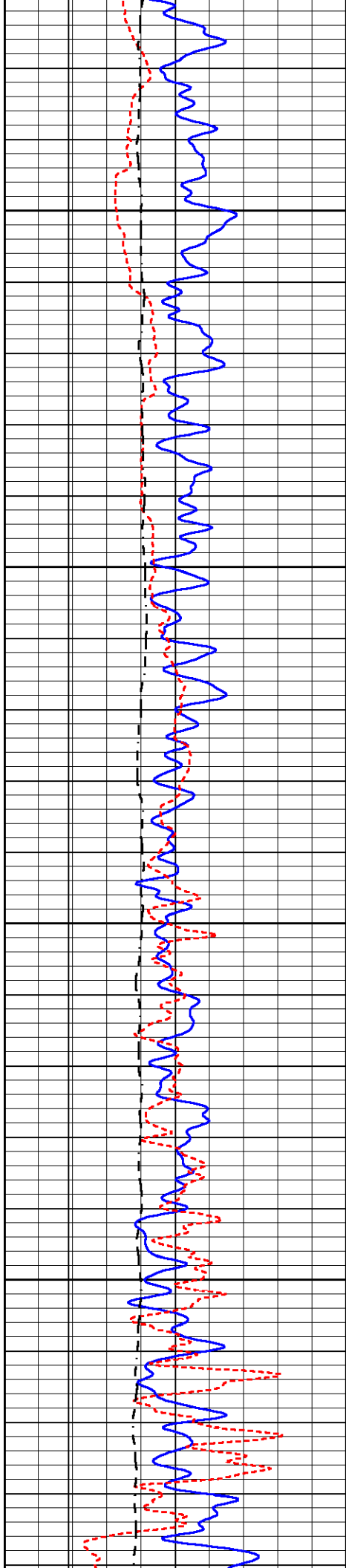
Database File 5895ddn.db
 Dataset Pathname pass1LAS
 Presentation Format _slt
 Dataset Creation Fri Nov 19 22:42:24 2021
 Charted by Depth in Feet scaled 1:240

0	GAMMA RAY (GAPI)	150	ABHV	140	DELTA TIME (usec/ft)	40	
6	CALIPER (in)	16	10 (ft3)	0	30	SONIC POROSITY (pu)	-10
-100	SP (mV)	100	TBHV	0	ITT (msec)	20	
			0 (ft3)	10			







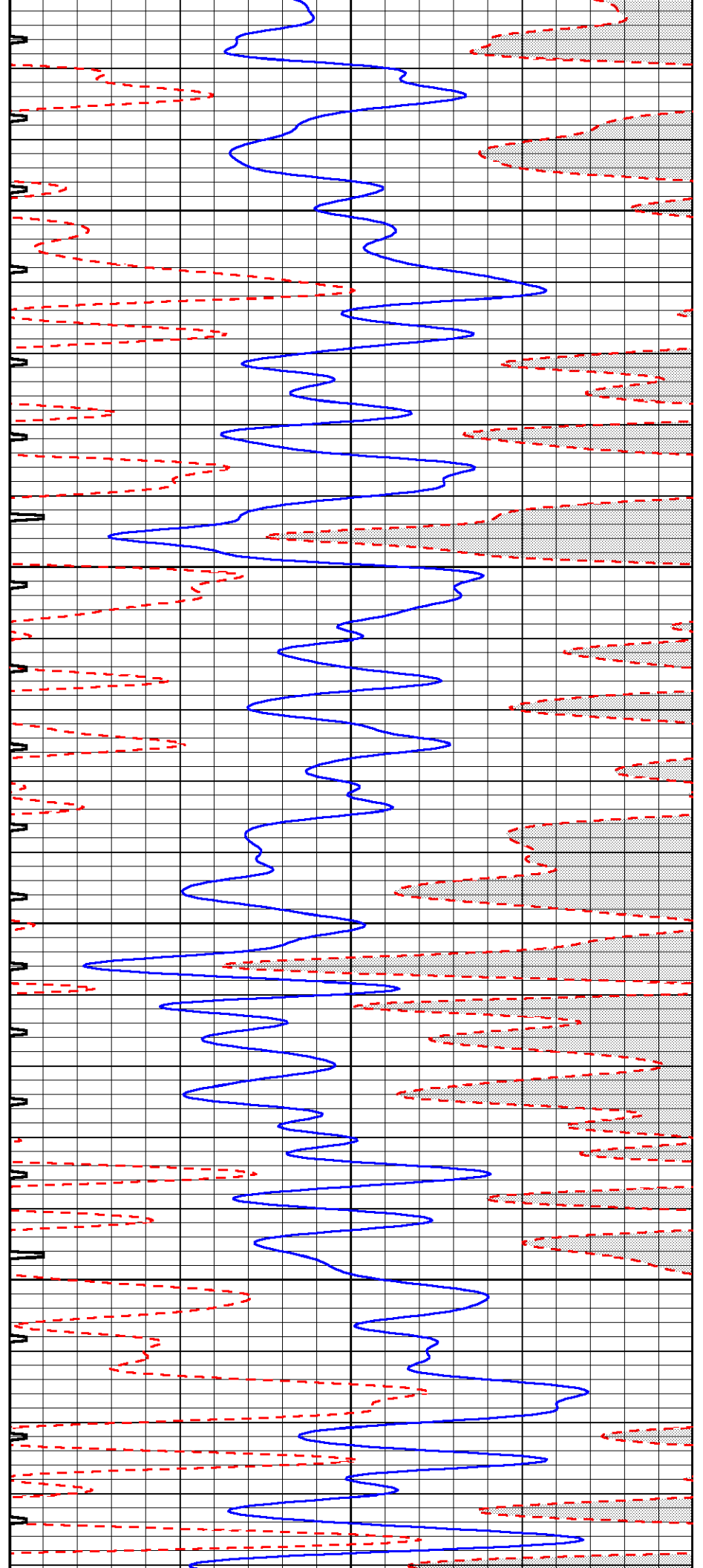


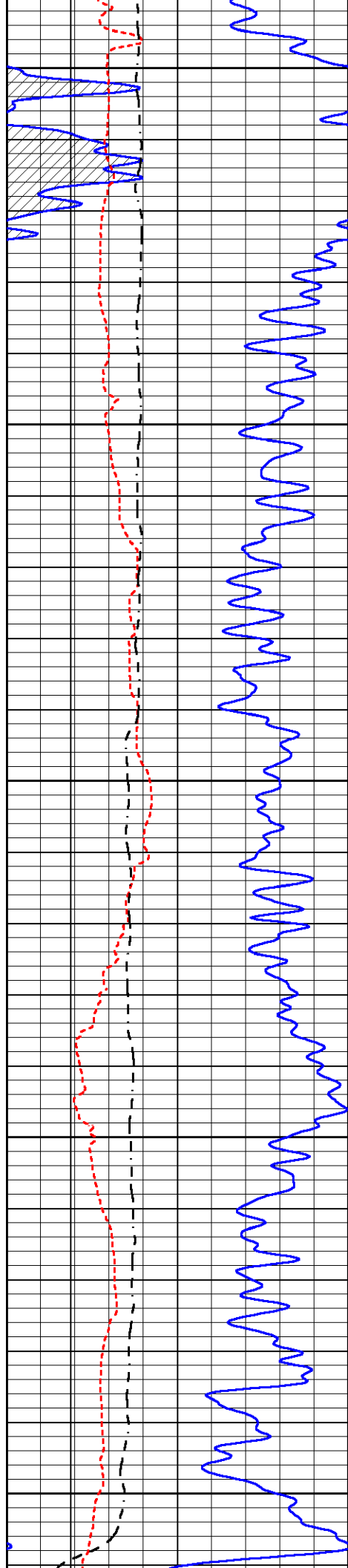
650

700

750

800





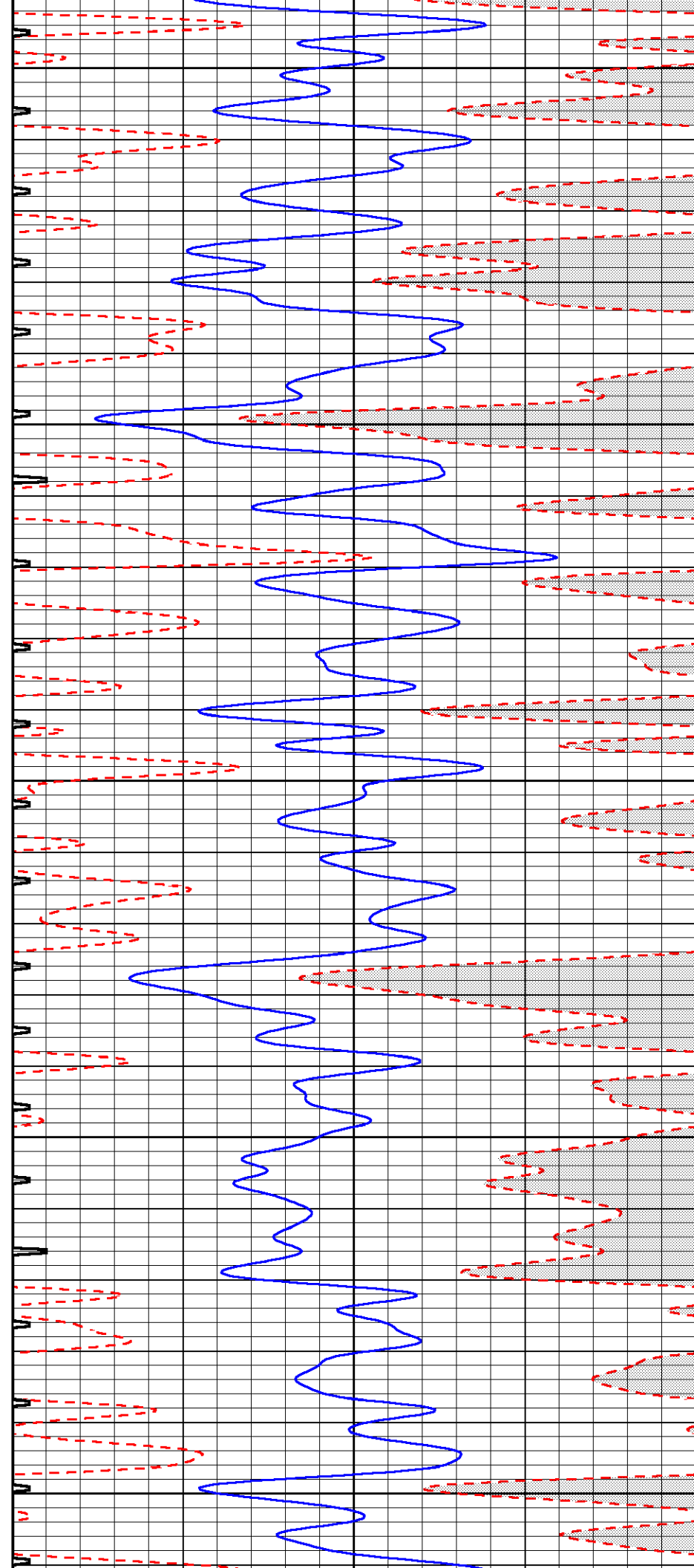
850

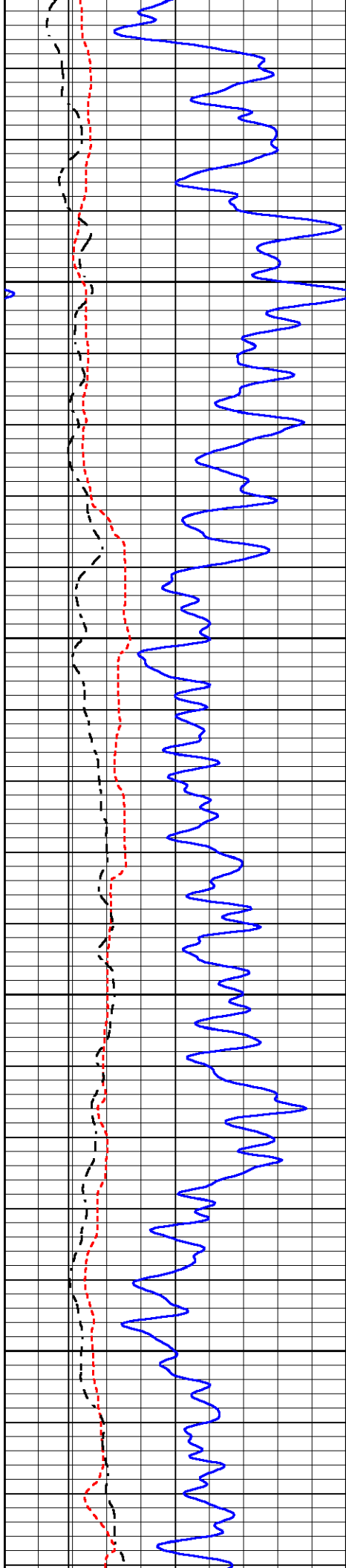
900

950

1000

1050



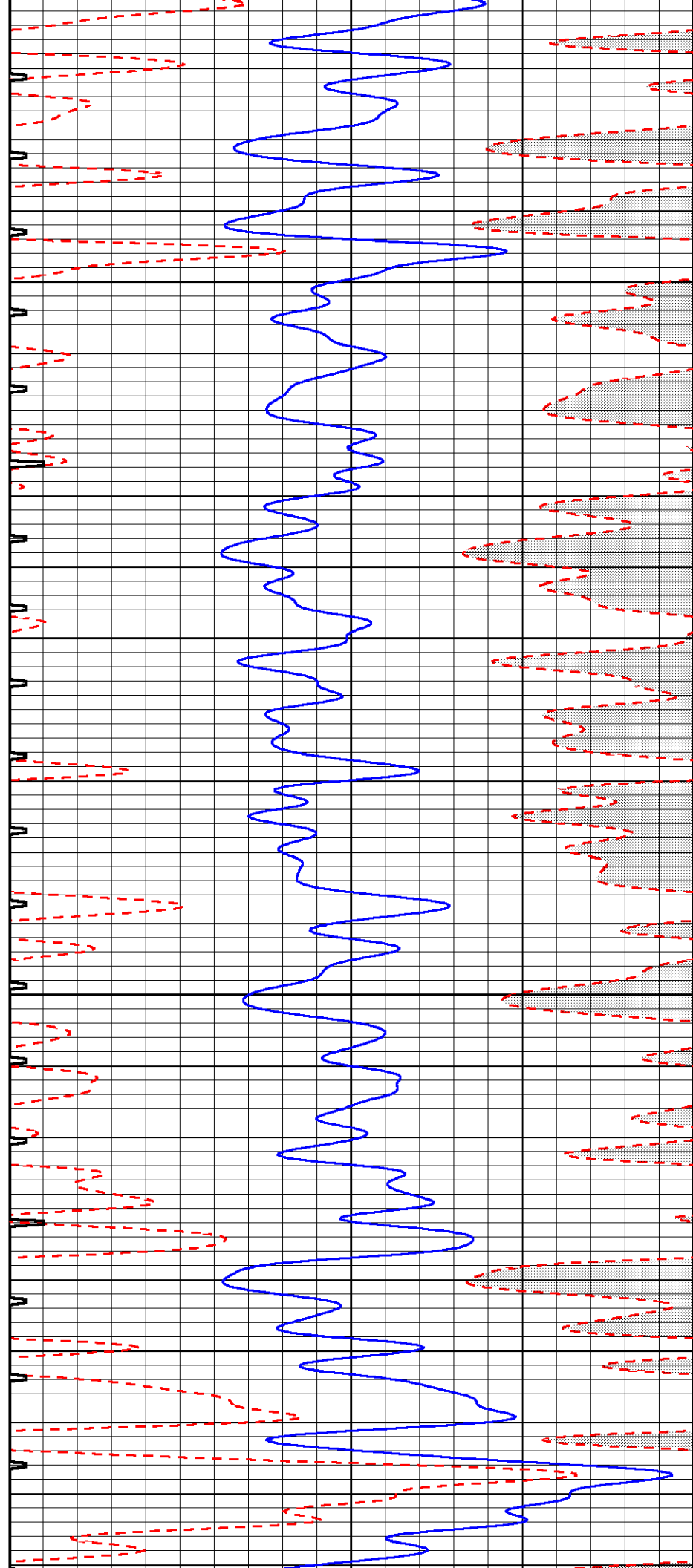


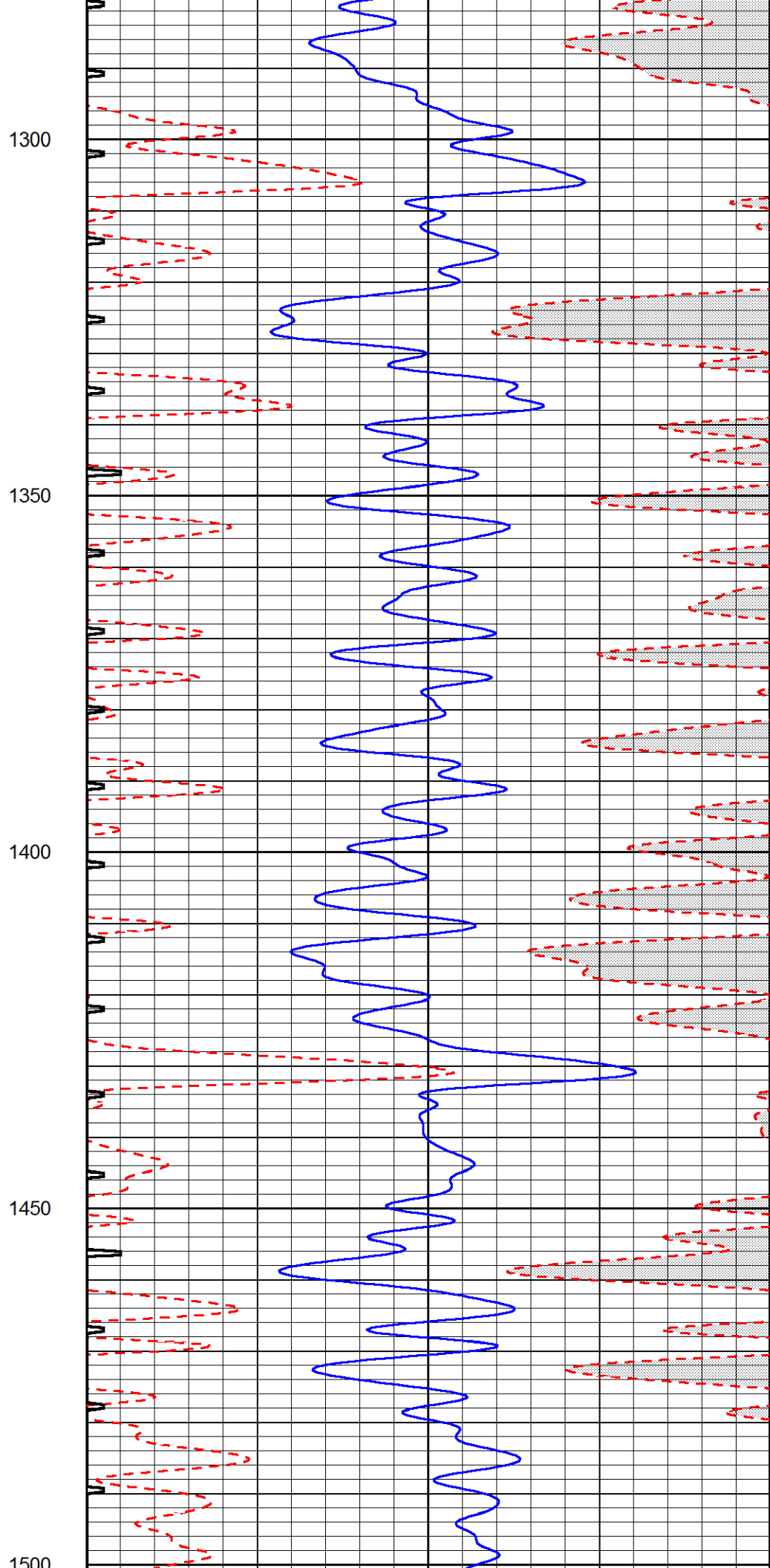
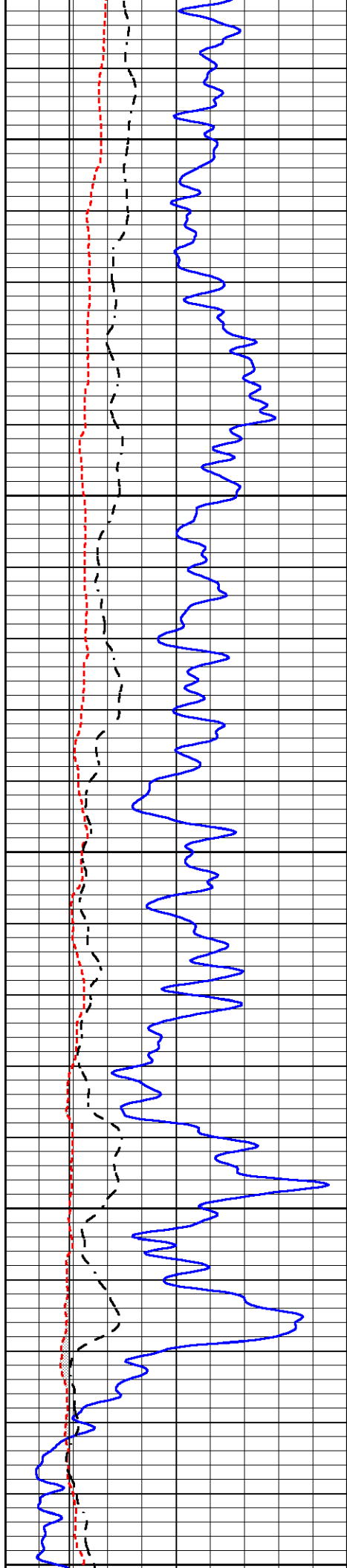
1100

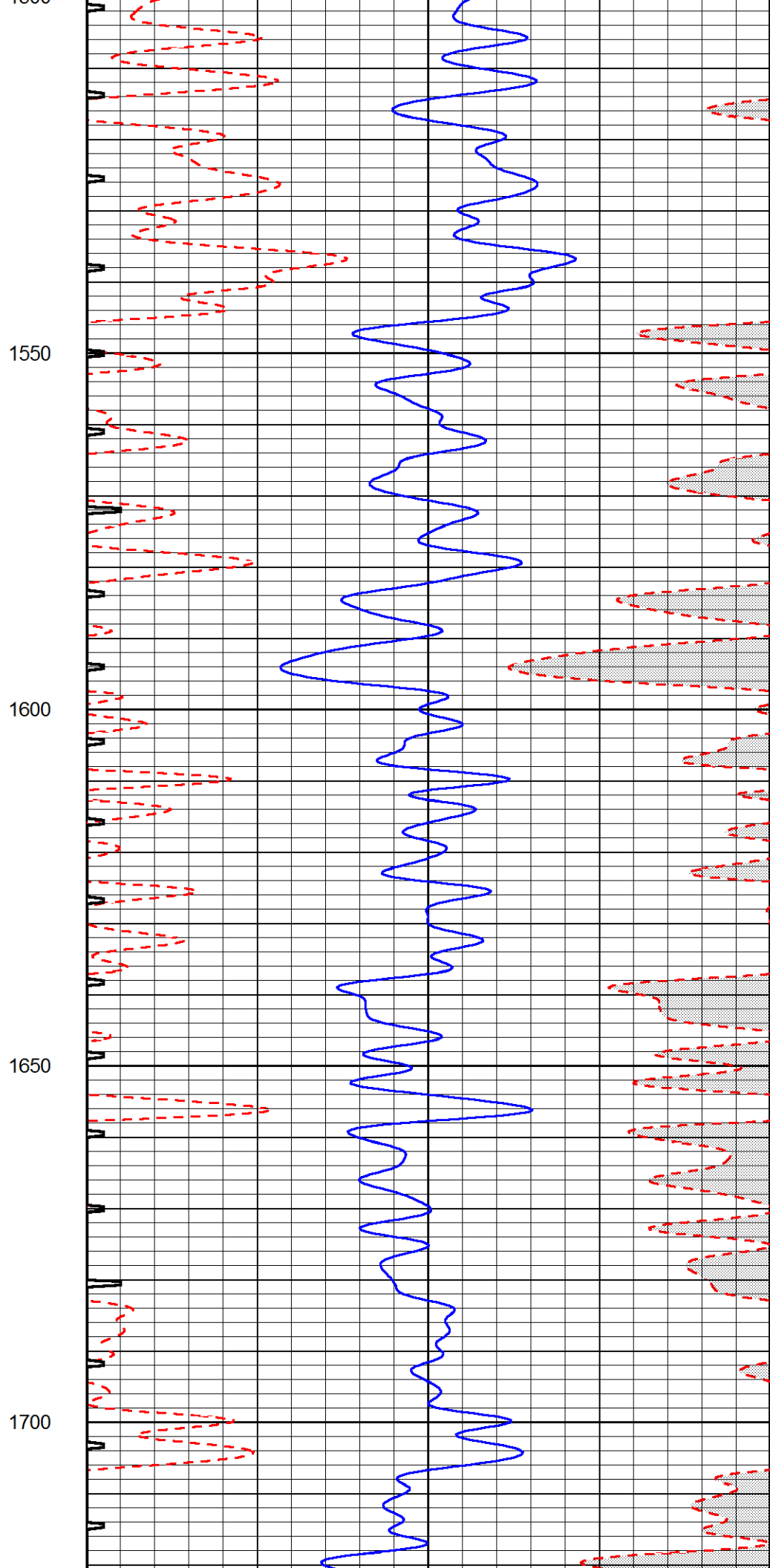
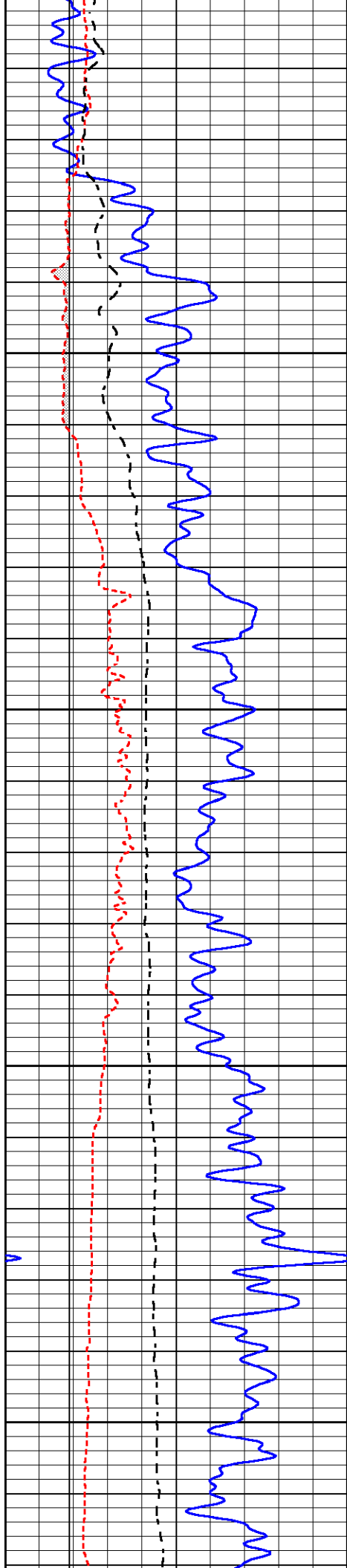
1150

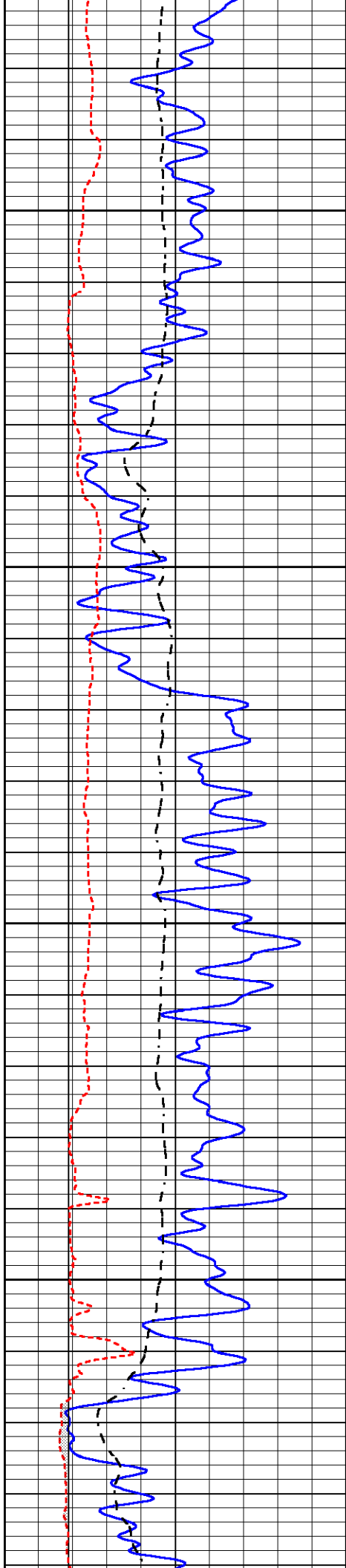
1200

1250







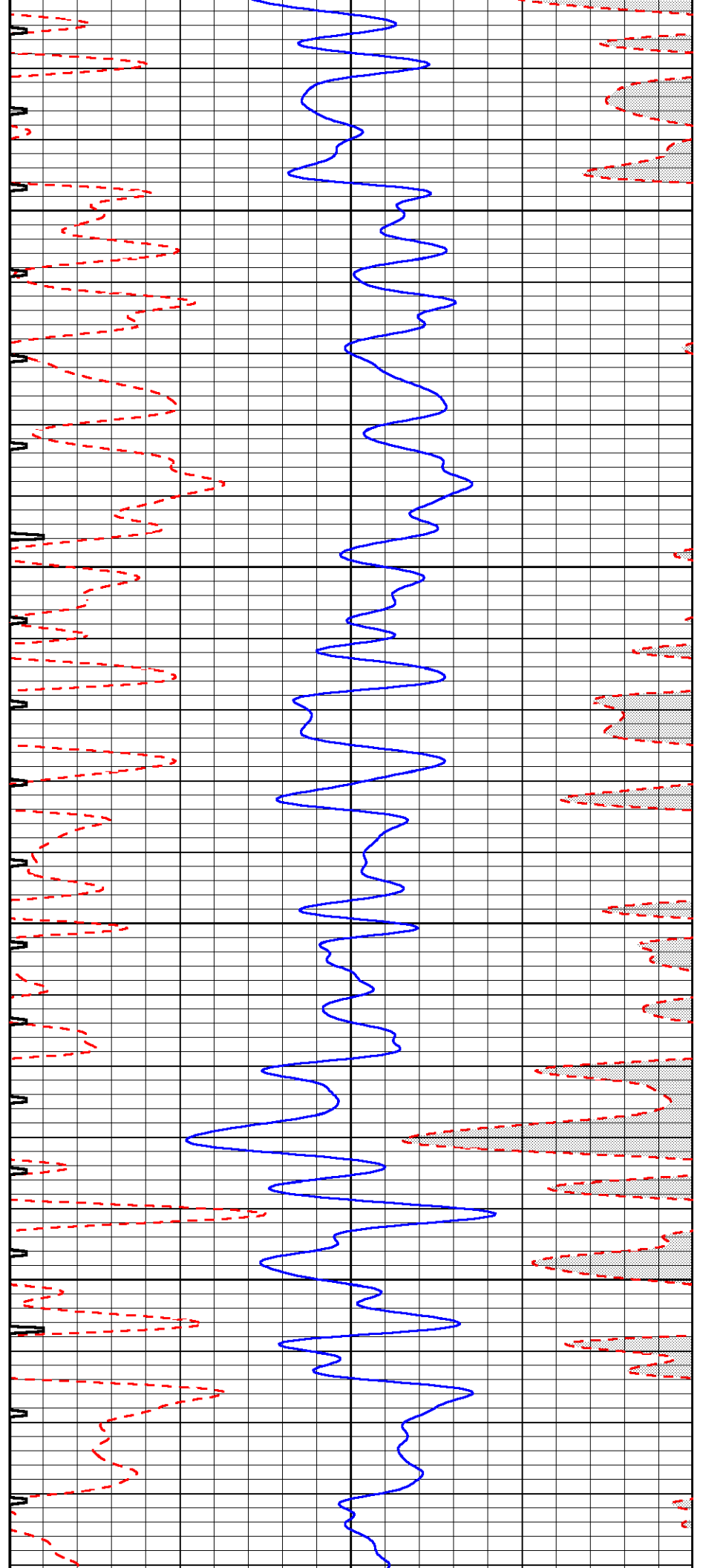


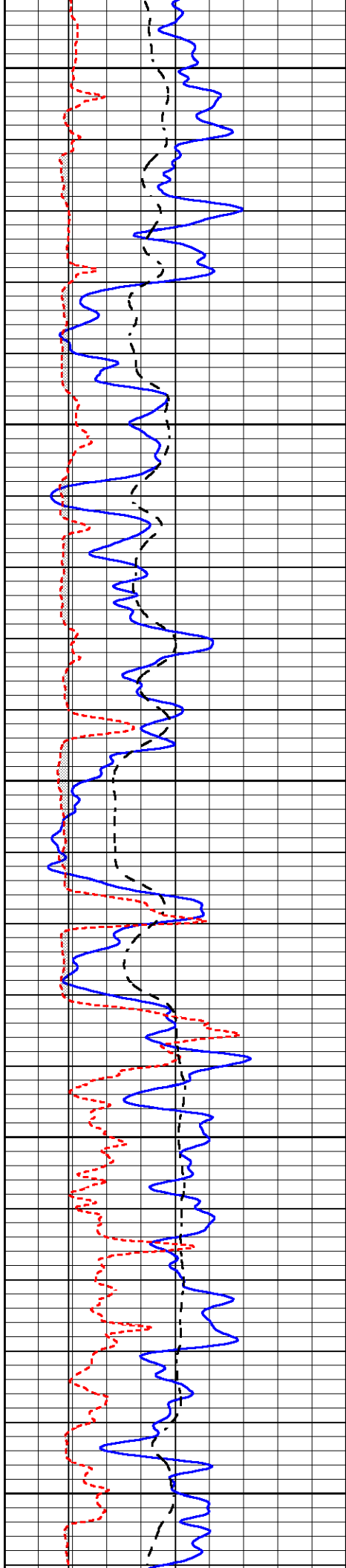
1750

1800

1850

1900





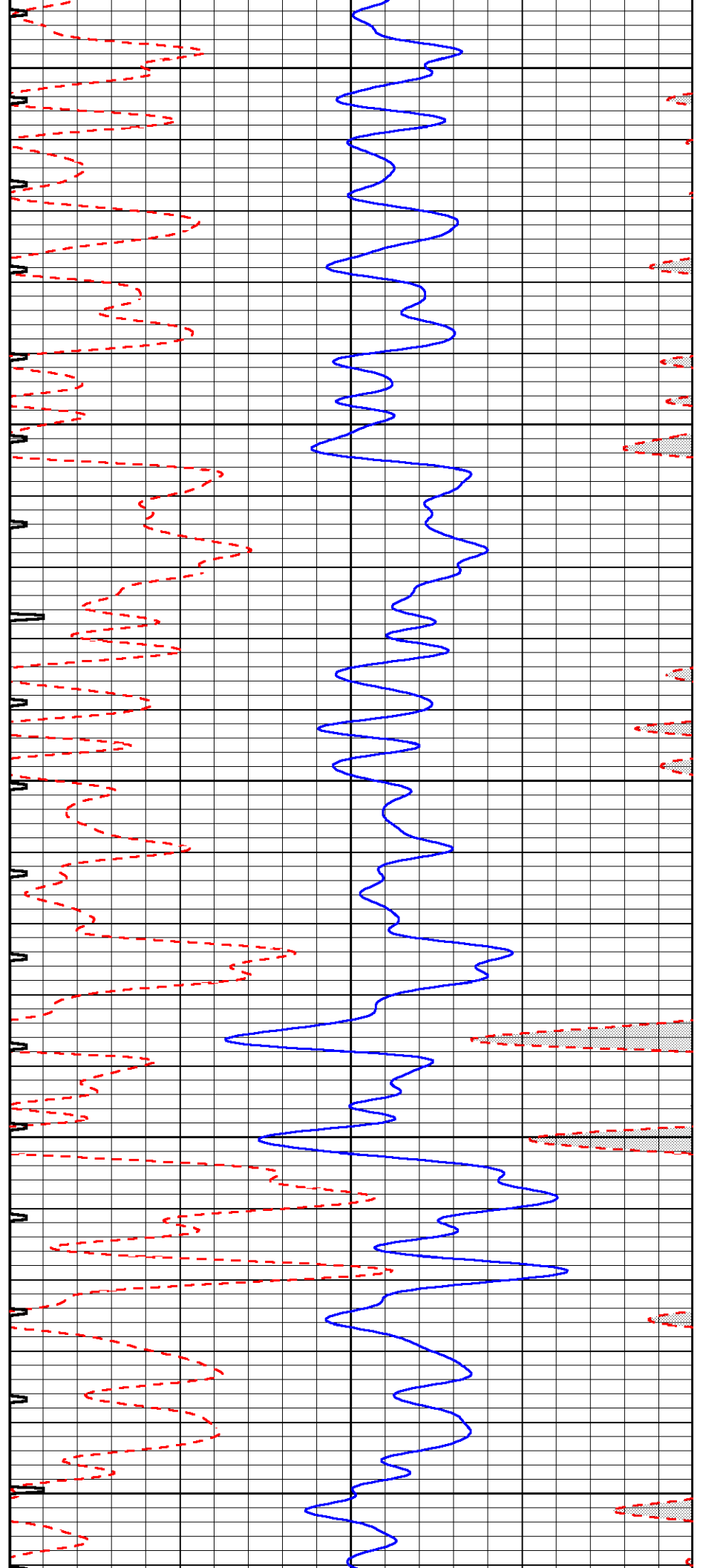
1950

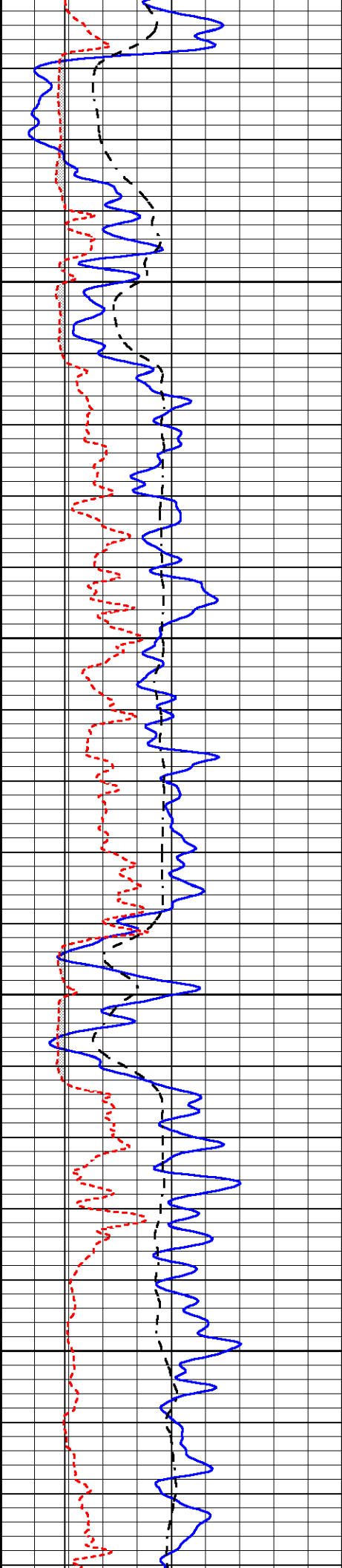
2000

2050

2100

2150



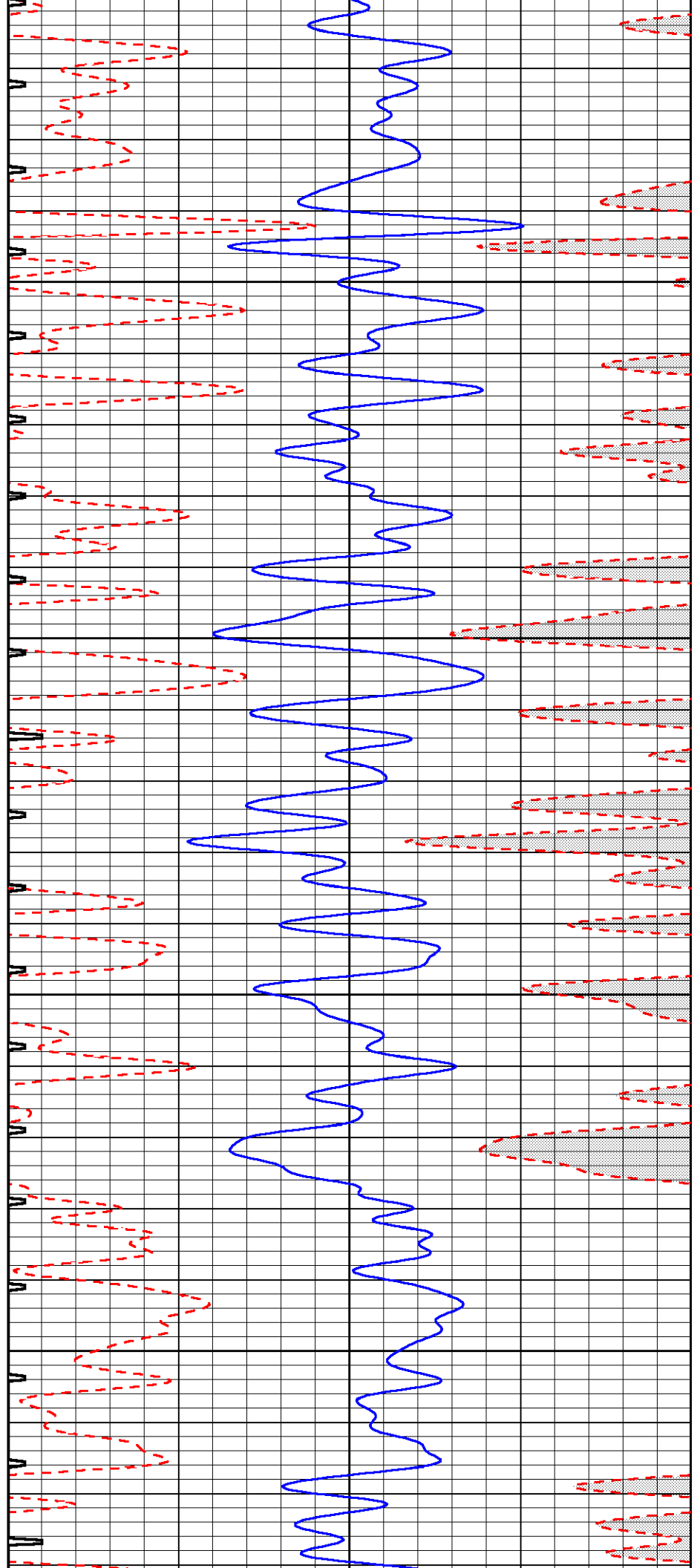


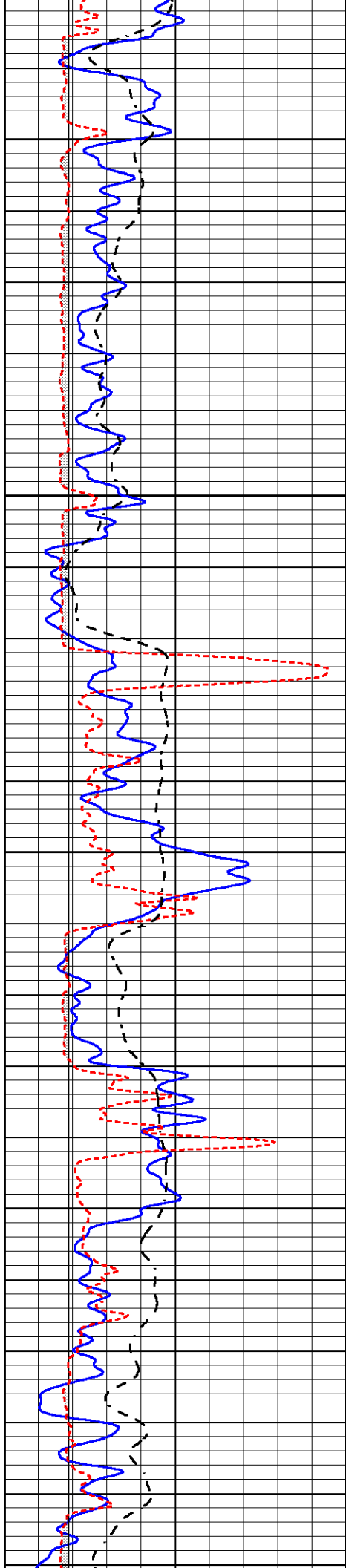
2200

2250

2300

2350





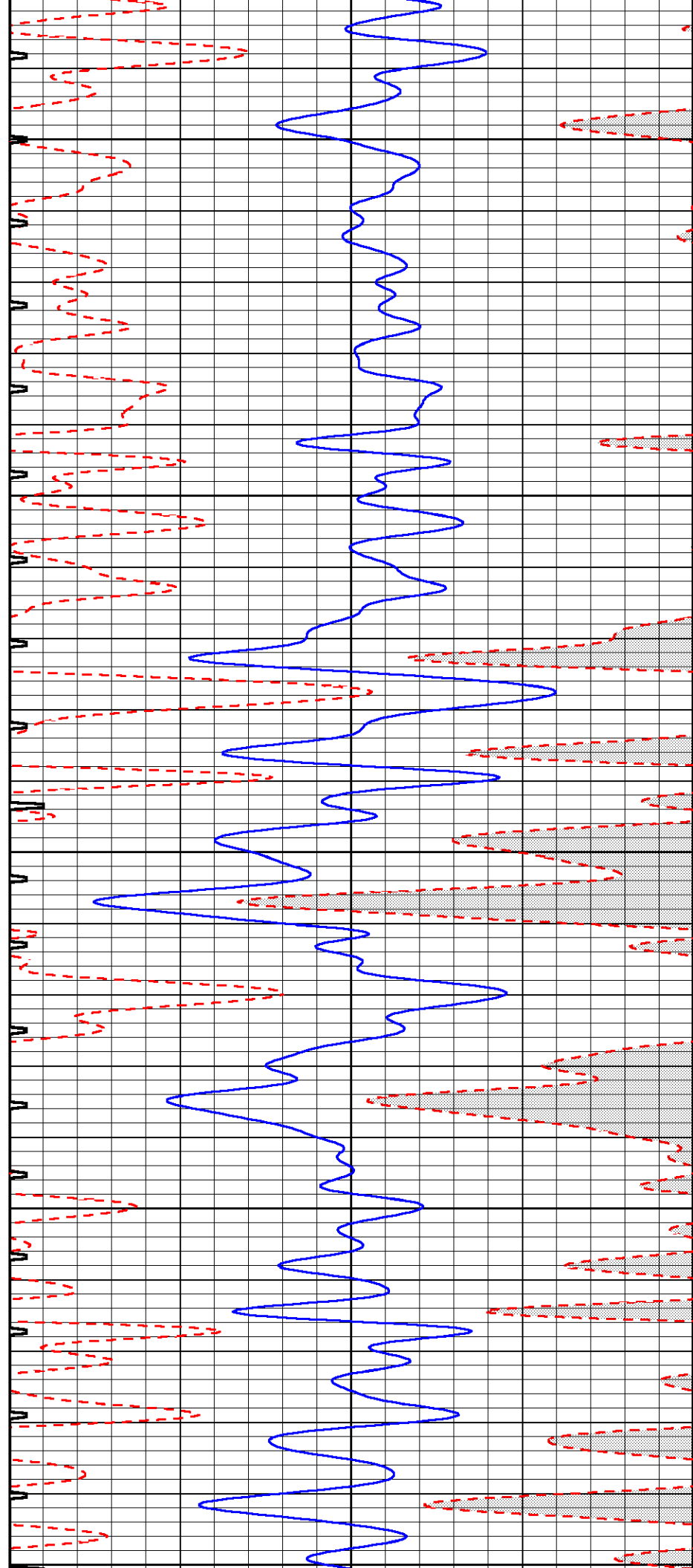
2400

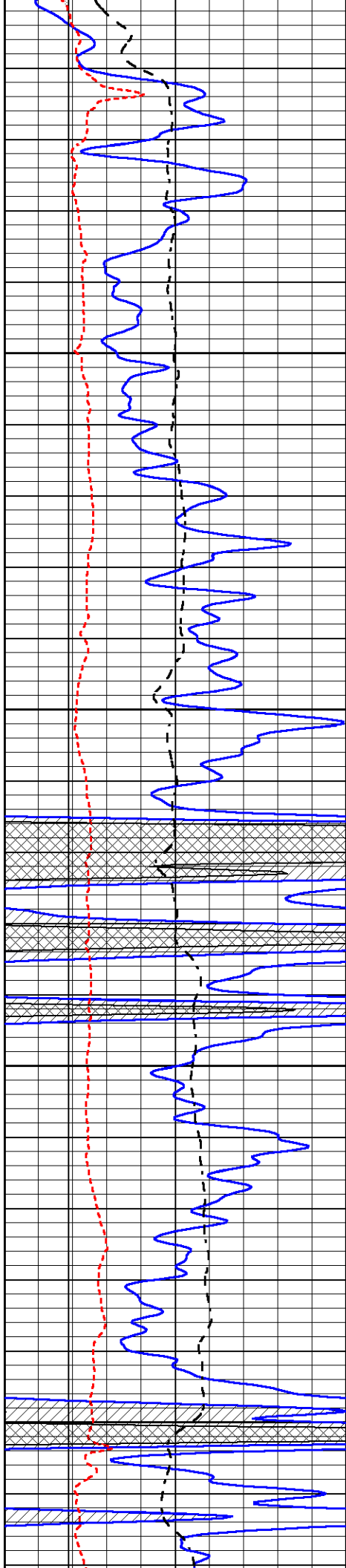
2450

2500

2550

2600





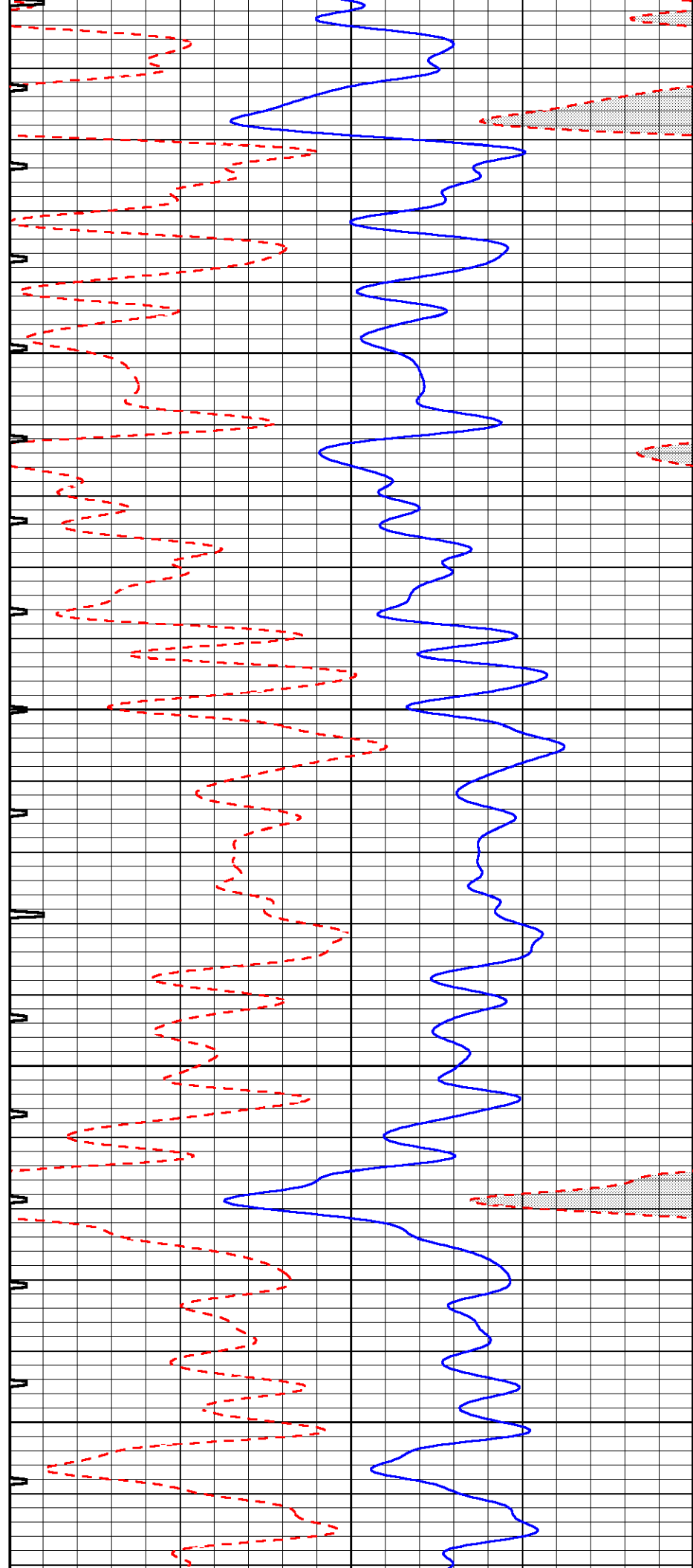
2600

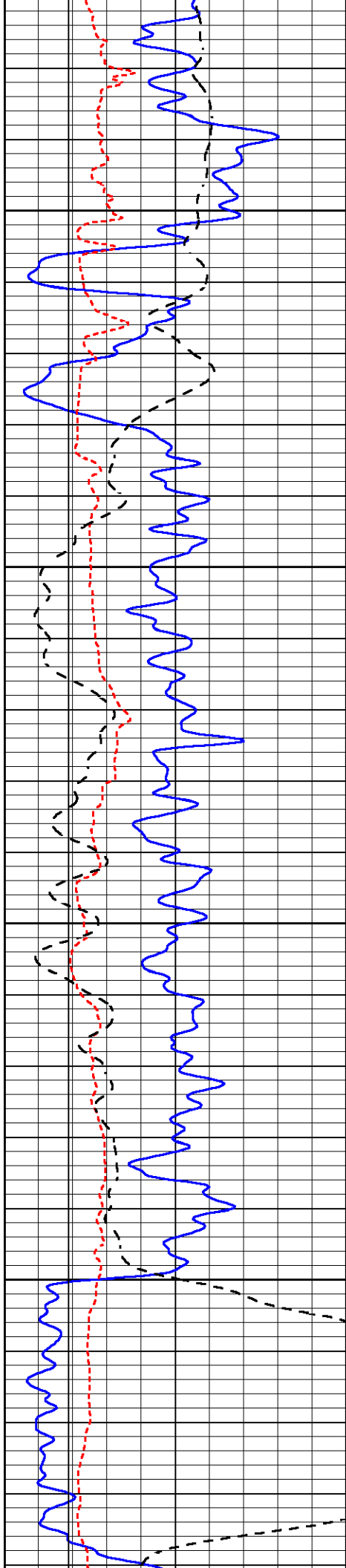
2650

2700

2750

2800



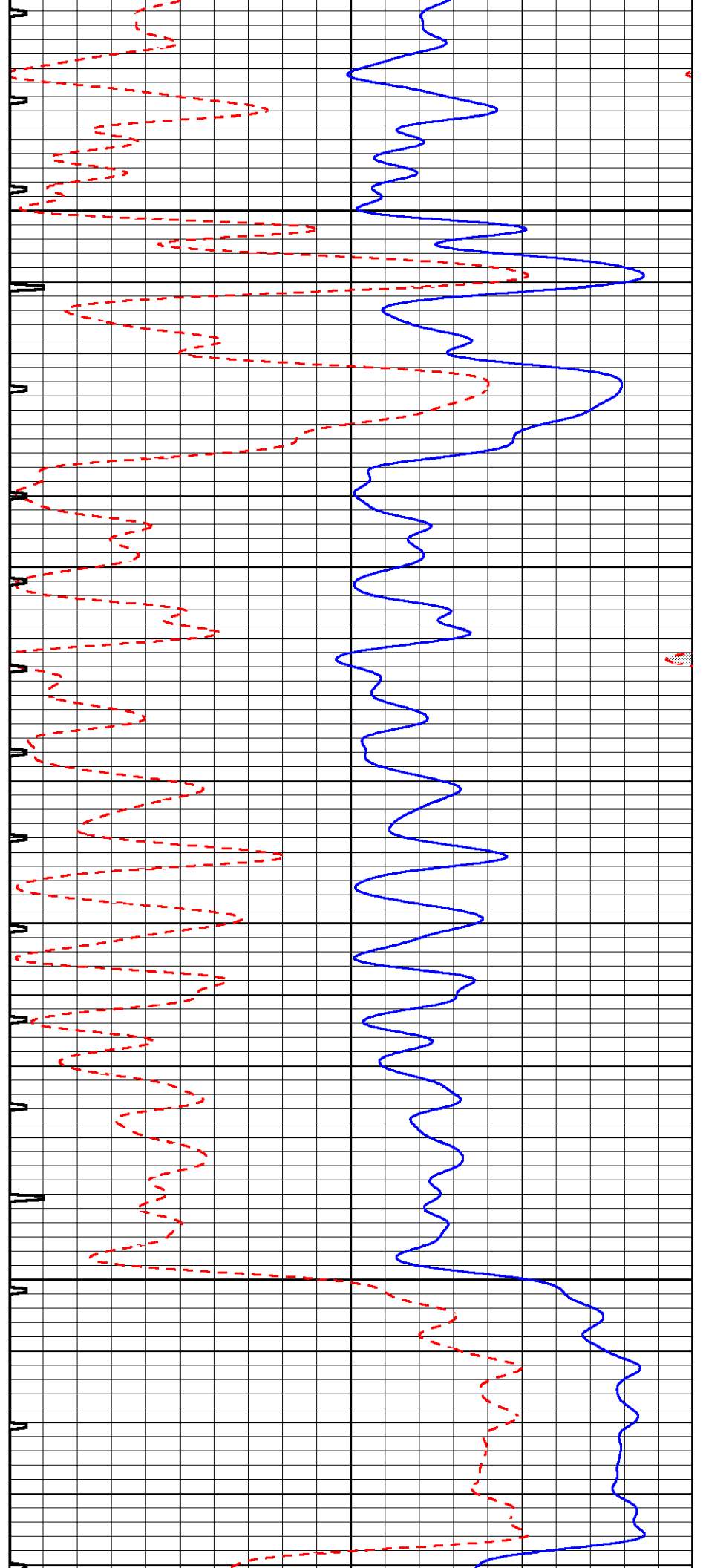


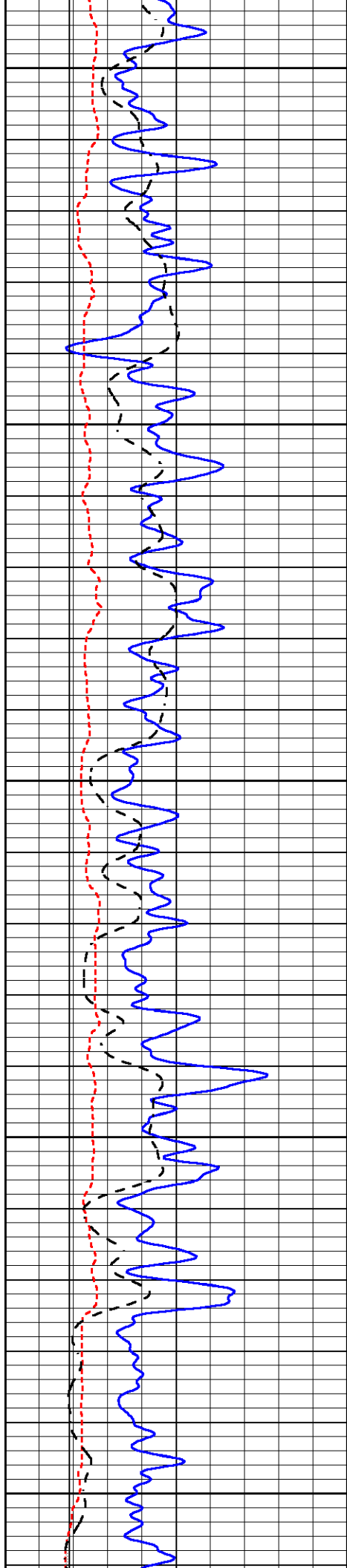
2850

2900

2950

3000





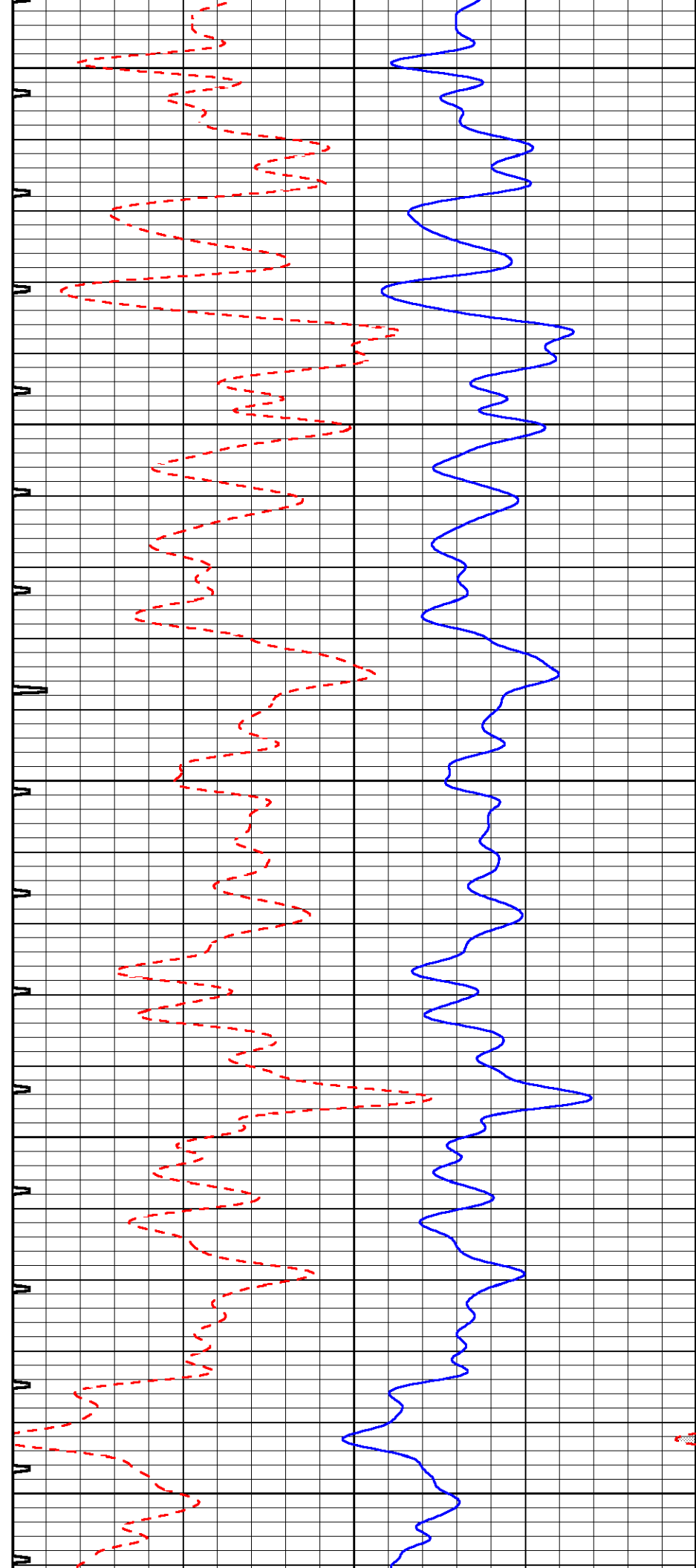
3050

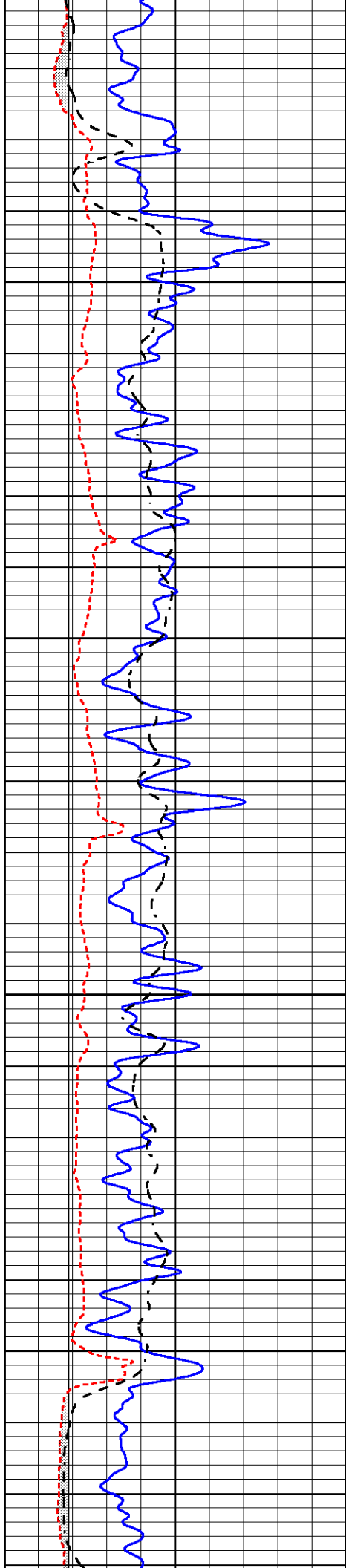
3100

3150

3200

3250



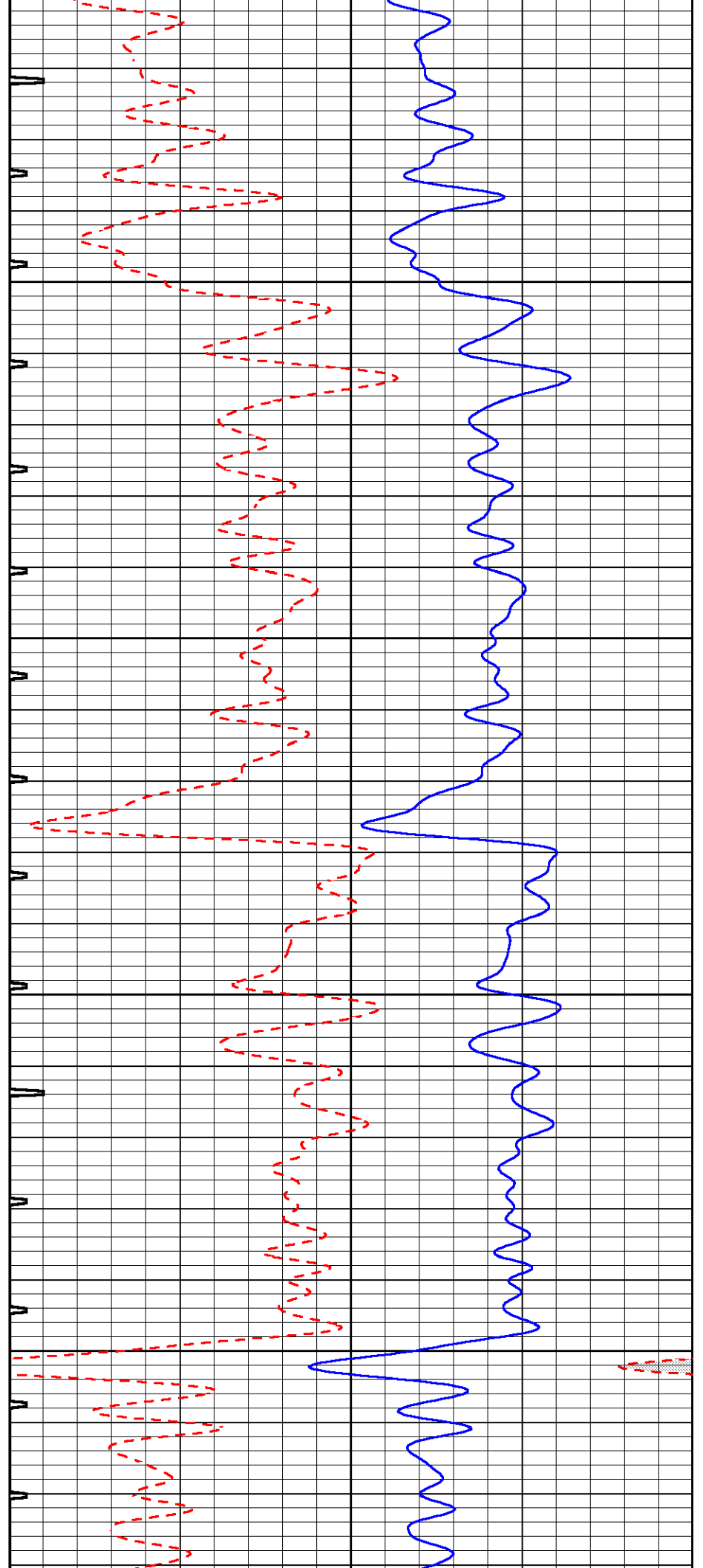


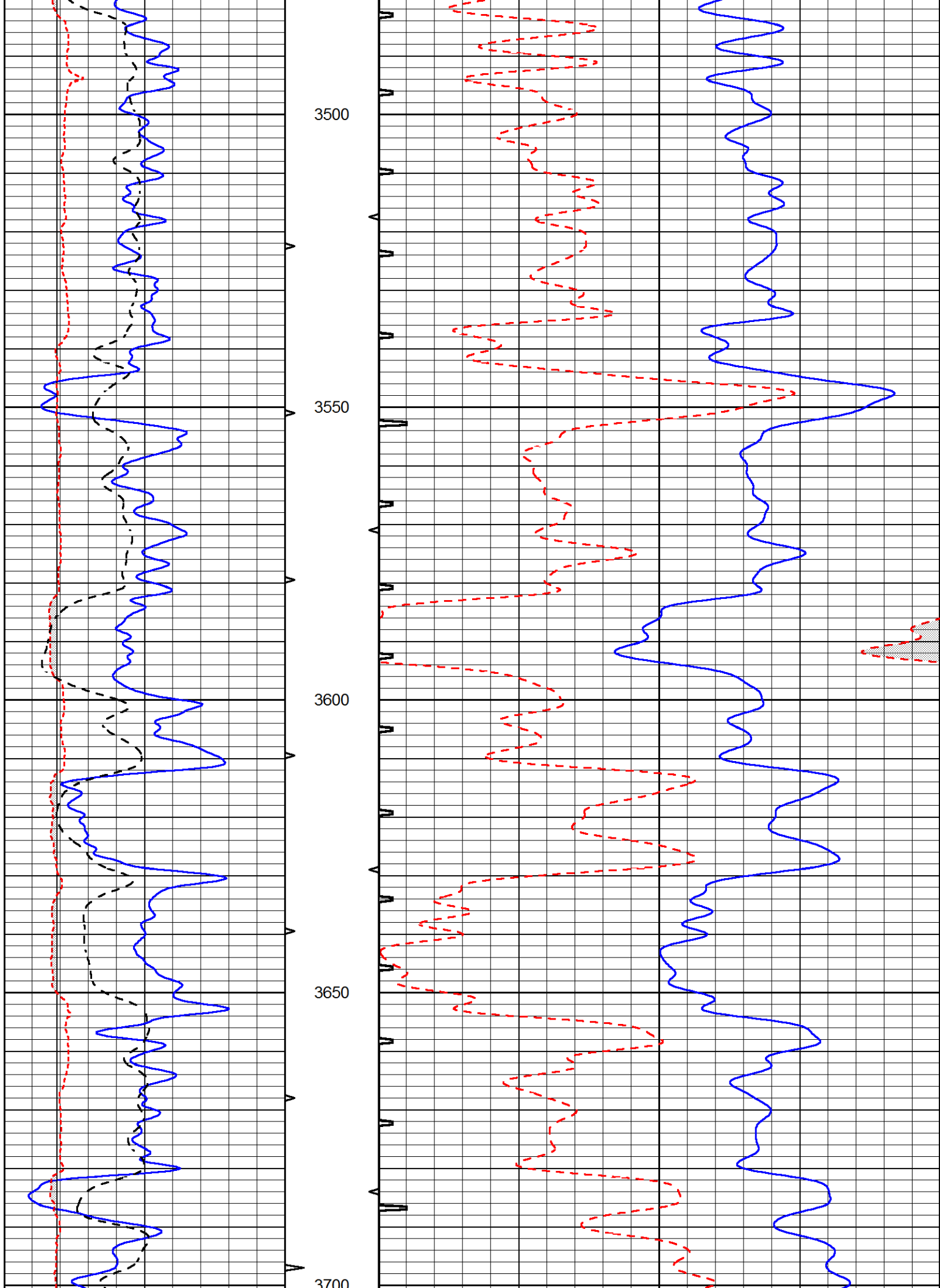
3300

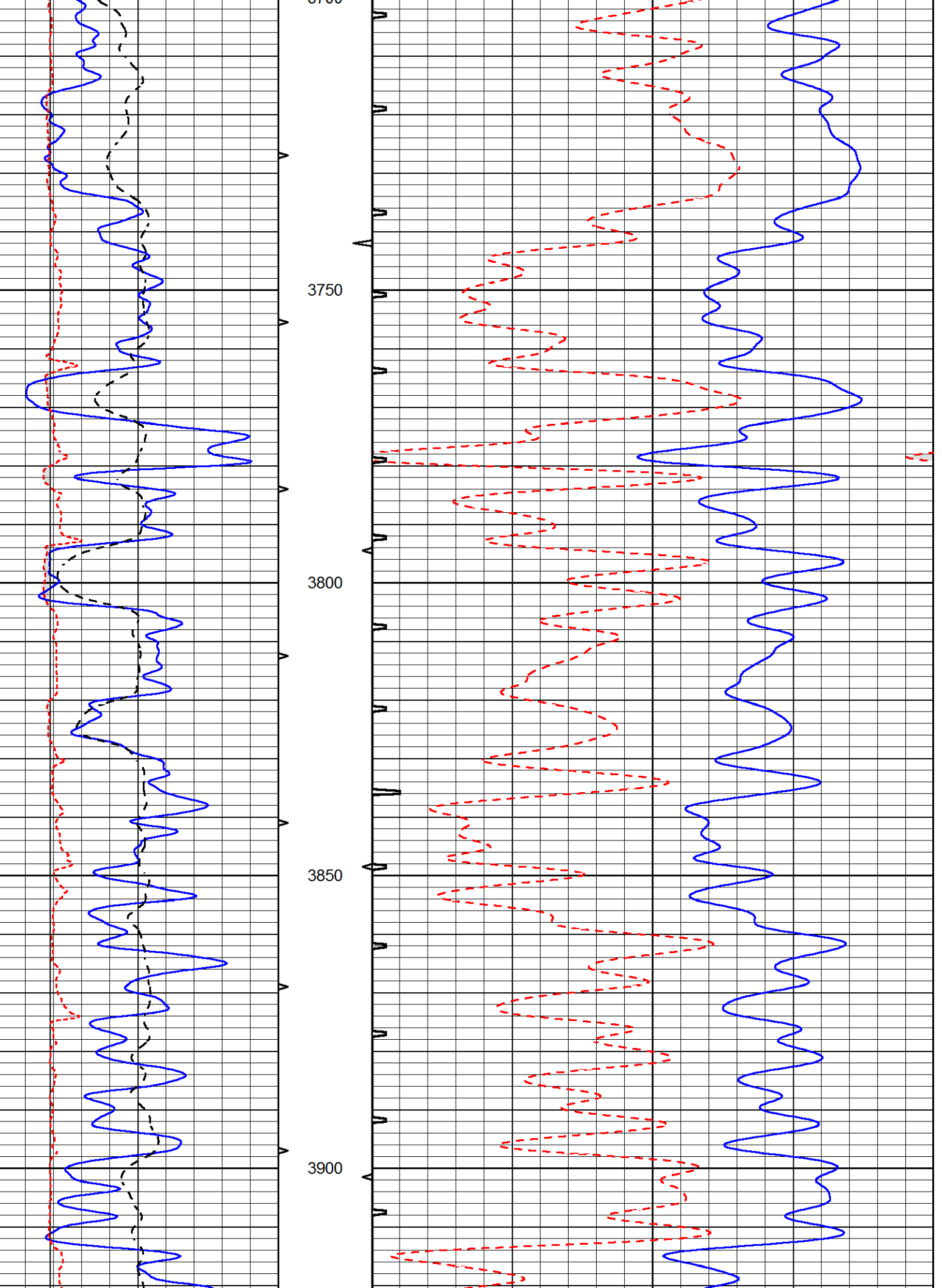
3350

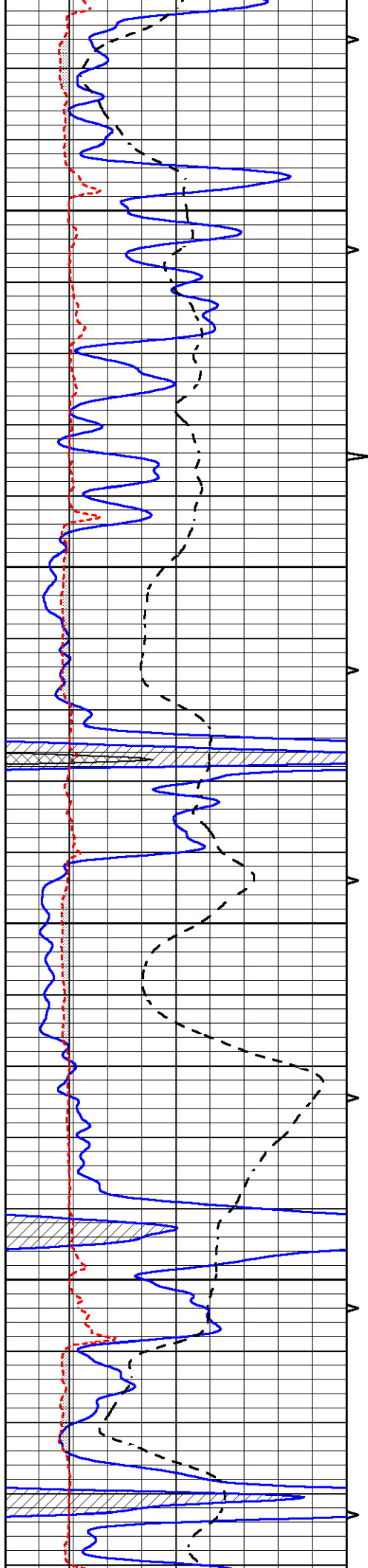
3400

3450







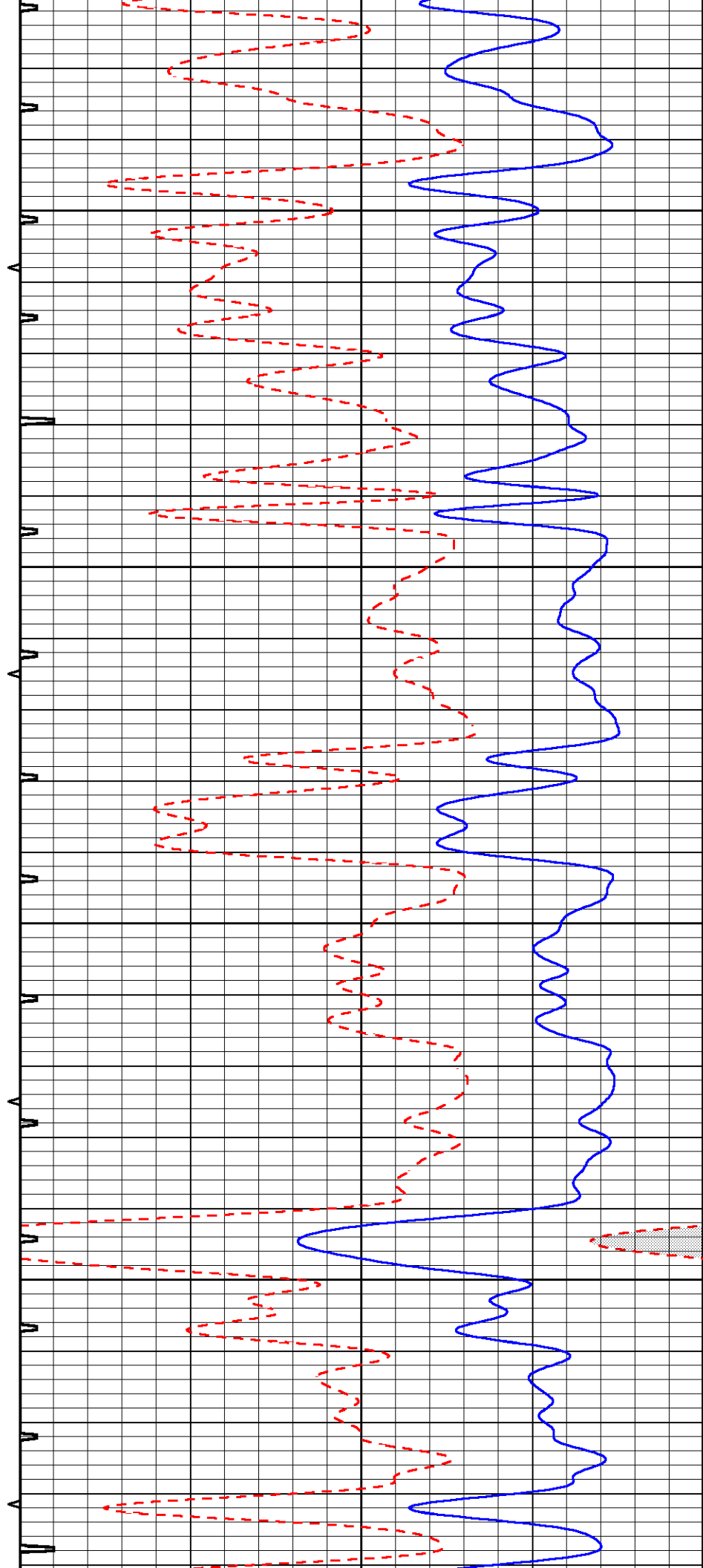


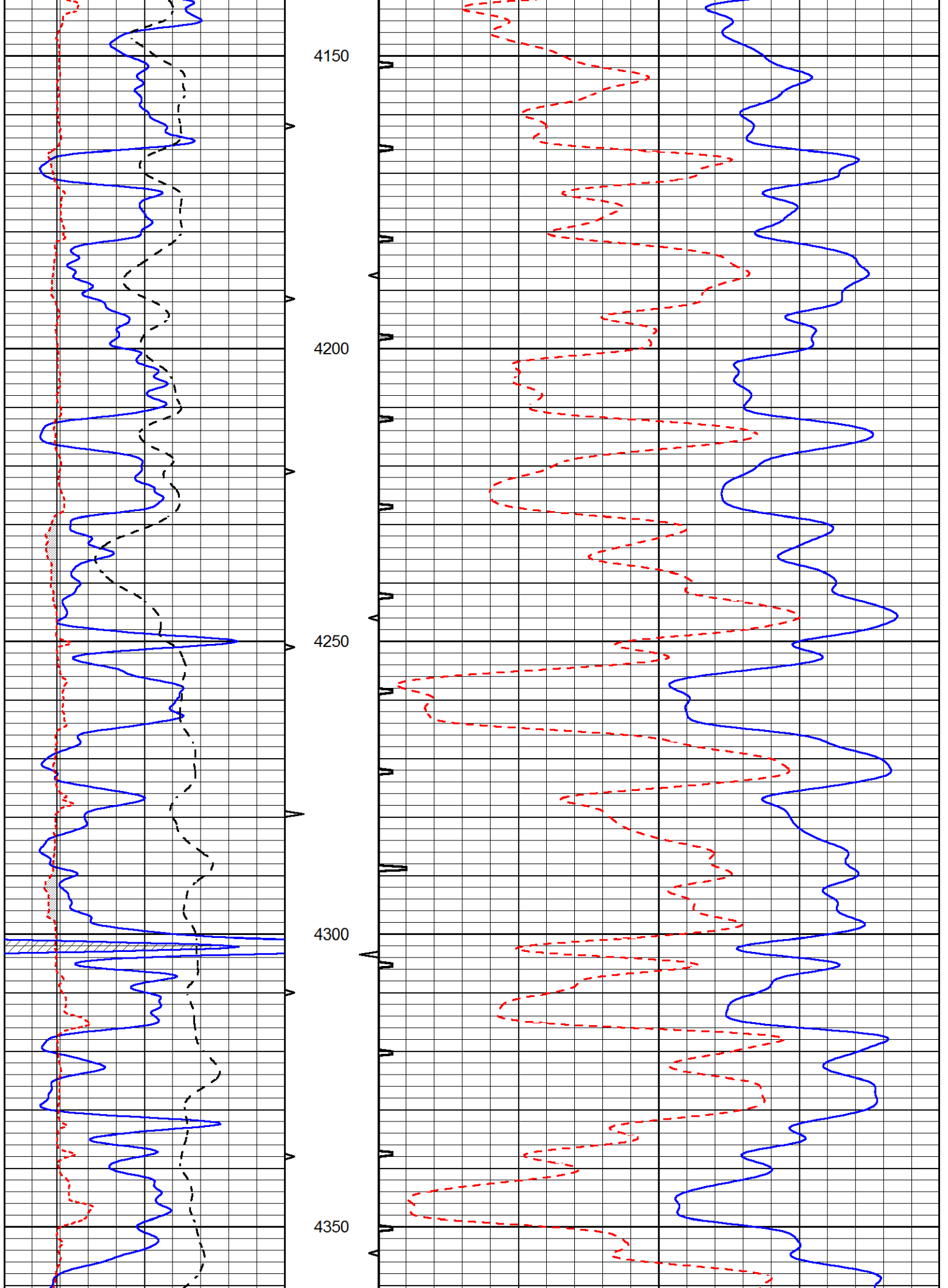
3950

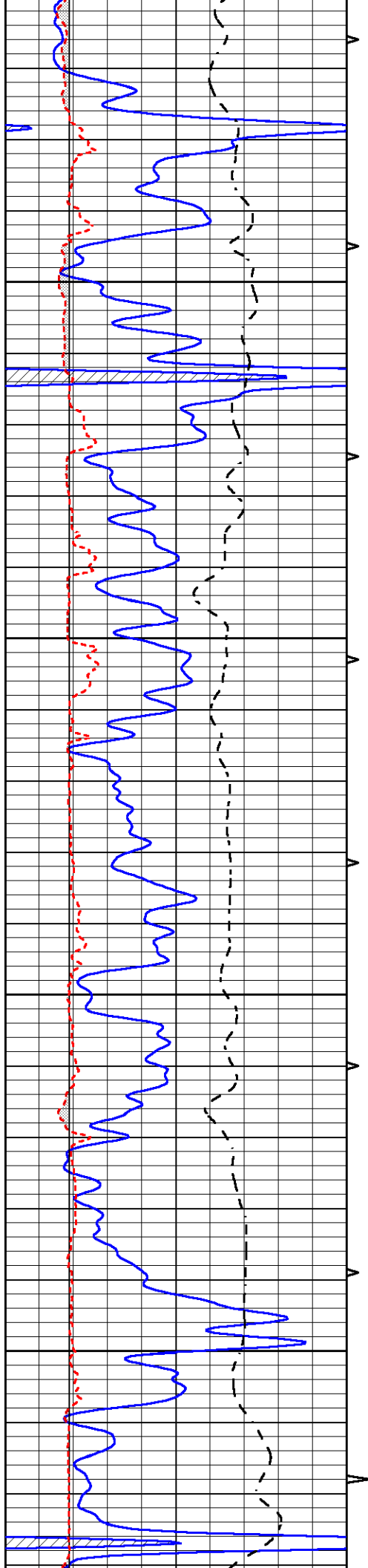
4000

4050

4100





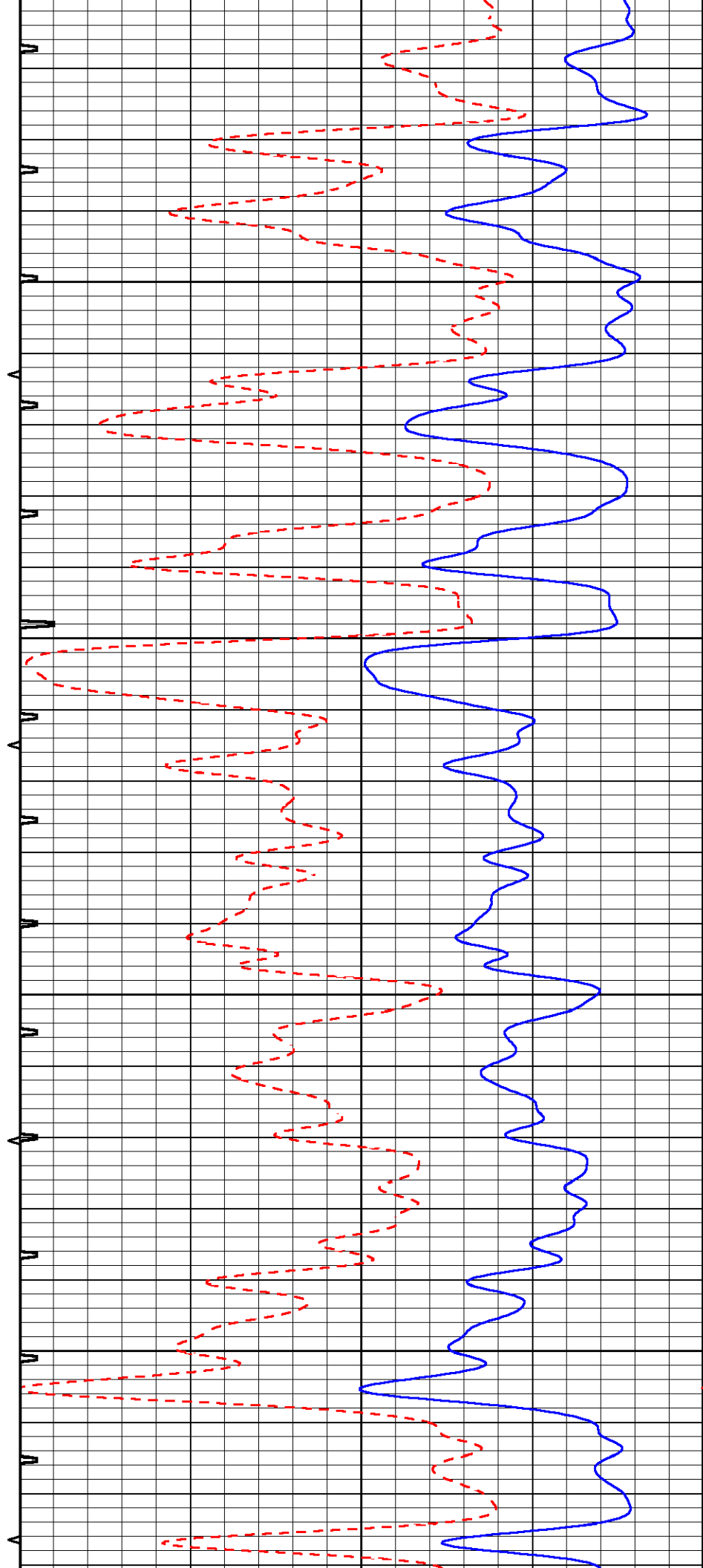


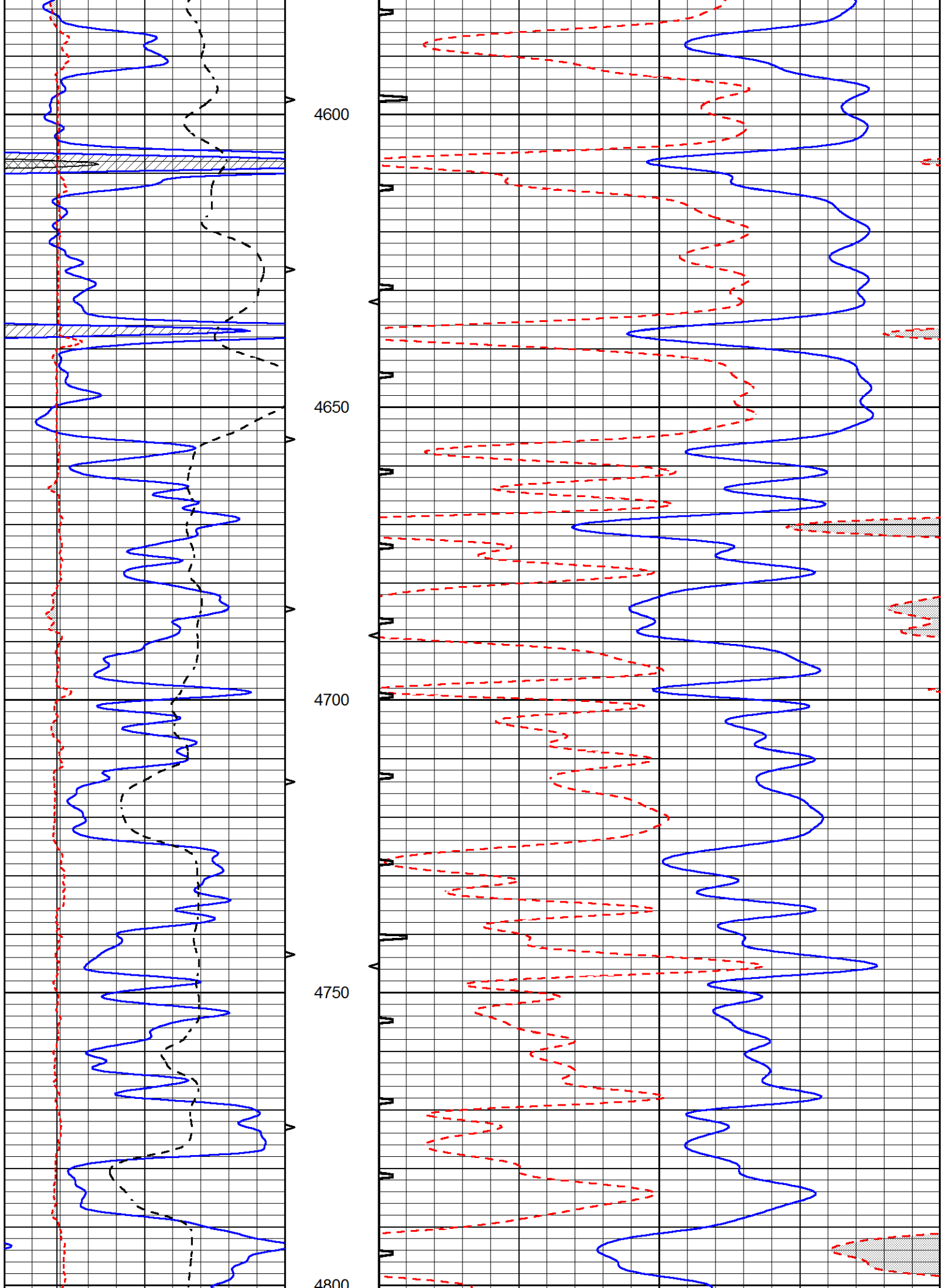
4400

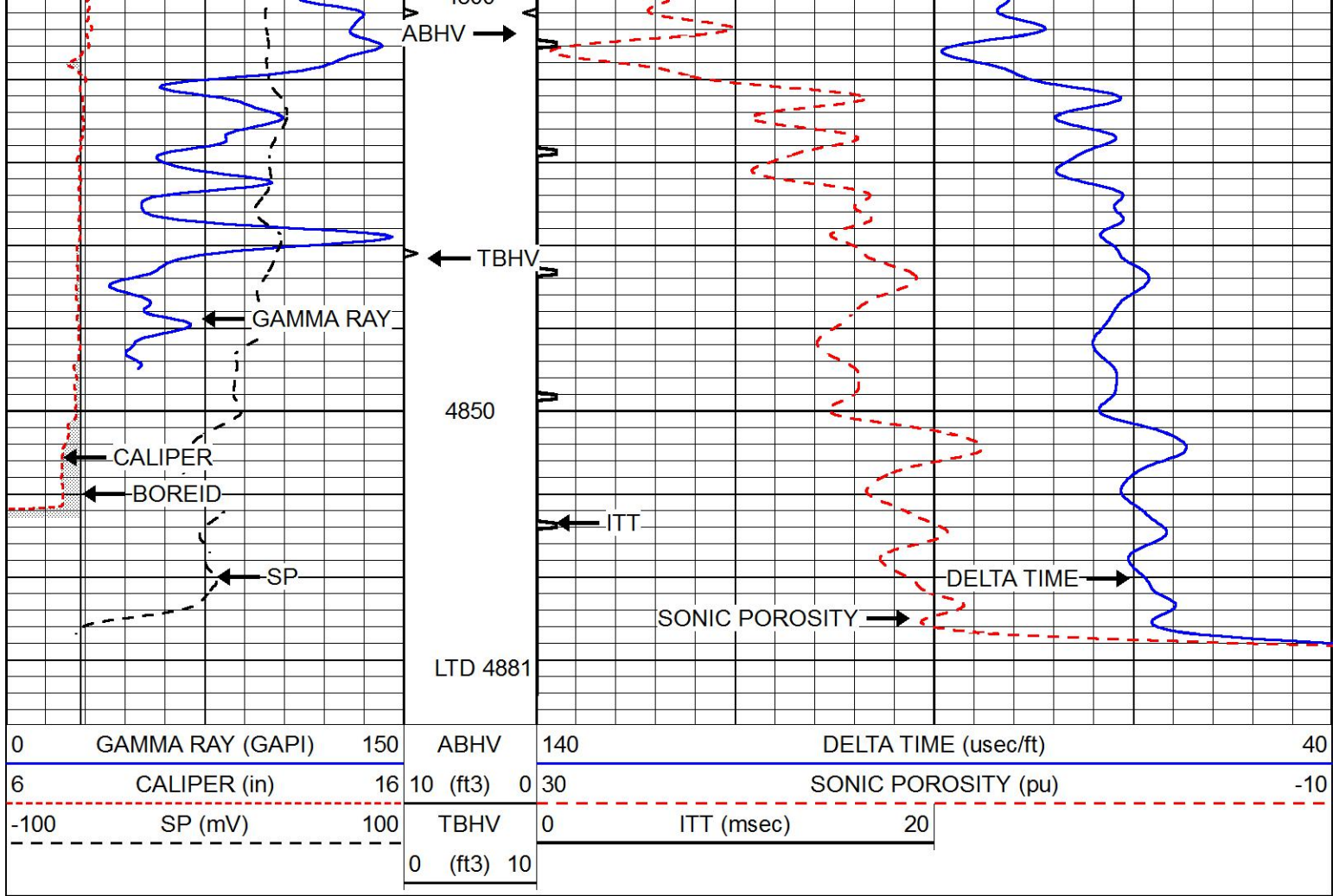
4450

4500

4550



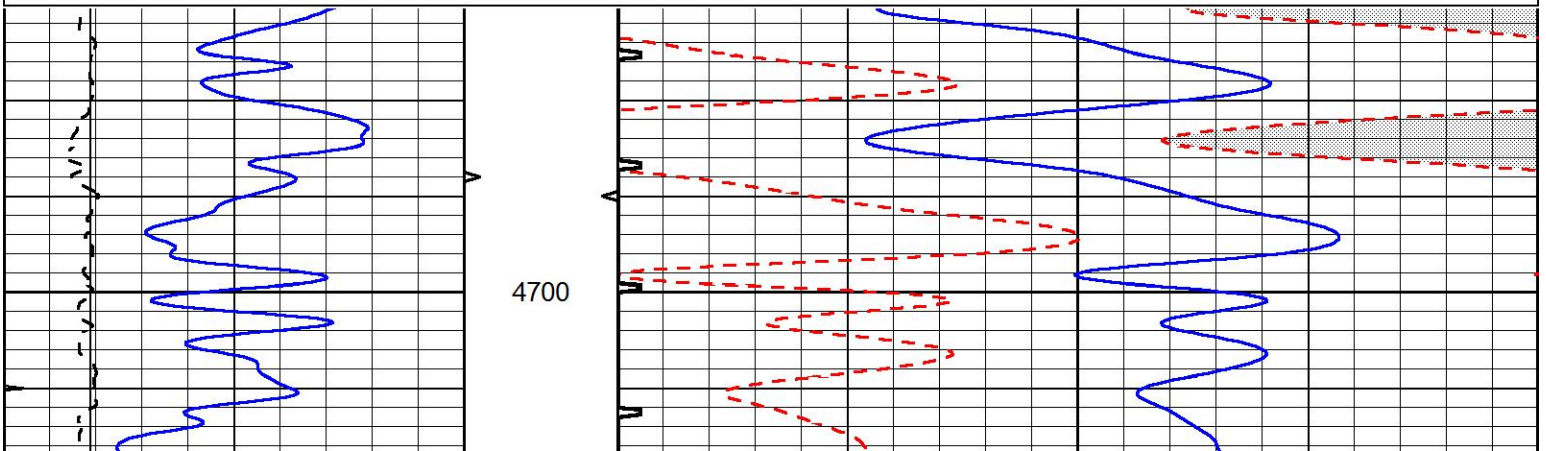


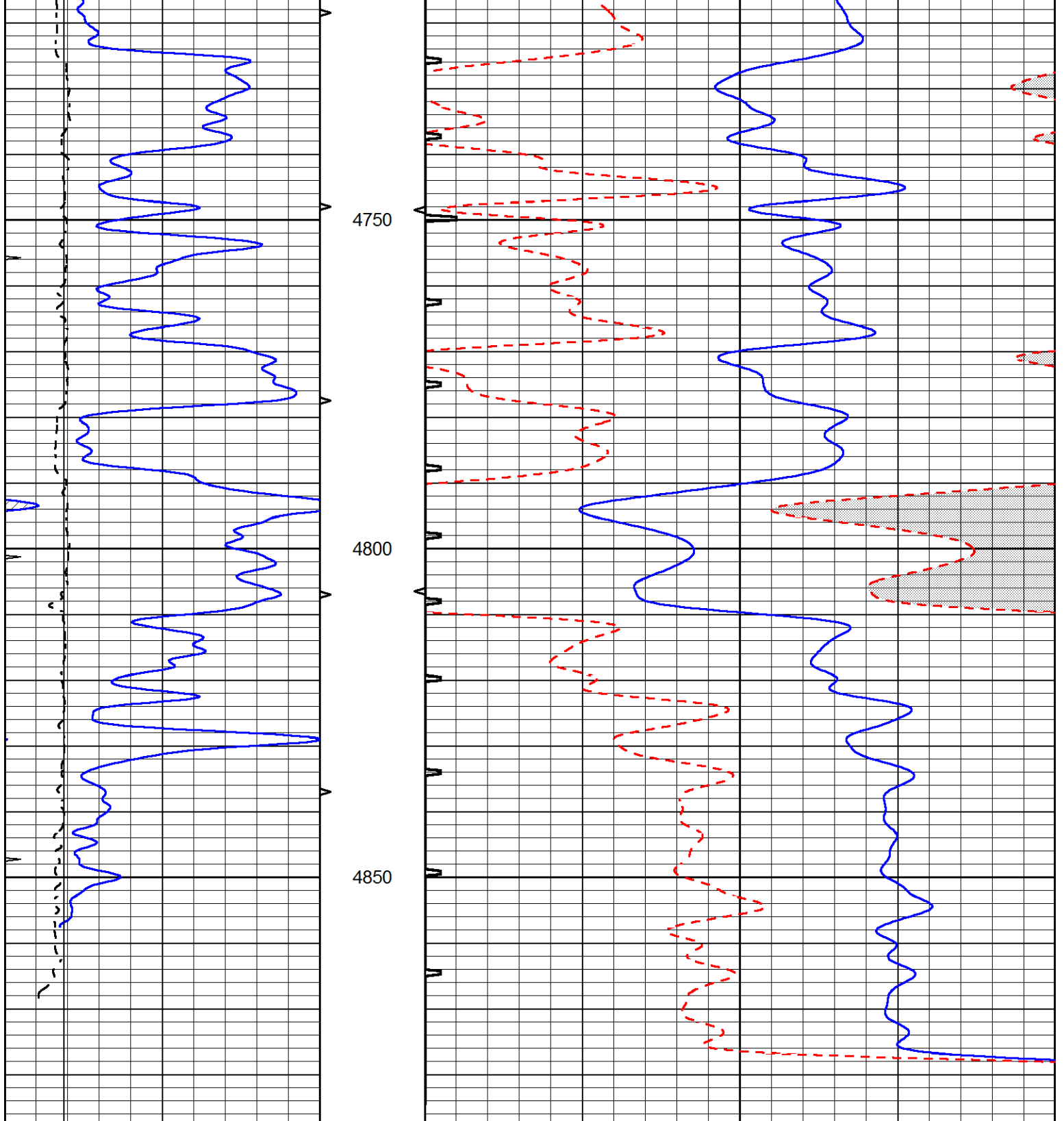


REPEAT SECTION

Database File 5895ddn.db
 Dataset Pathname pass4.1
 Presentation Format _slt
 Dataset Creation Fri Nov 19 22:17:26 2021
 Charted by Depth in Feet scaled 1:240

0	GAMMA RAY (GAPI)	150	ABHV	140	DELTA TIME (usec/ft)	40
0	MINMK	20	10 (ft3) 0	30	SONIC POROSITY (pu)	-10
6	MELCAL (in)	16	TBHV	0	ITT (msec)	20
			0 (ft3) 10			





0	GAMMA RAY (GAPI)	150	ABHV	140	DELTA TIME (usec/ft)	40
0	MINMK	20	10 (ft3)	0	SONIC POROSITY (pu)	-10
6	MELCAL (in)	16	TBHV	0	ITT (msec)	20
			0 (ft3)	10		

Calibration Report

Database File 5895ddn.db
 Dataset Pathname pass4.1
 Dataset Creation Fri Nov 19 22:17:26 2021

MICRO Calibration Report

Serial Number: Micro1
Tool Model: Probel
Performed: Tue Oct 26 10:40:04 2021

Caliper Calibration:	Gain=3.675	Offset=3.905
References	Low Cal 8.500	High Cal 13.500
Readings	1.196	2.557

1.5" Calibration:	Gain=32.134	Offset=0.000
References	Low Cal 0.000	High Cal 20.000
Readings	0.004	0.832

2" Calibration:	Gain=38.000	Offset=0.000
References	Low Cal 0.000	High Cal 20.000
Readings	0.022	0.793

Gamma Ray Calibration Report

Serial Number: GR5
Tool Model: OPEN
Performed: Fri Oct 01 08:18:05 2021

Calibrator Value: 1.0 GAPI

Background Reading: 0.0 cps
Calibrator Reading: 1.0 cps

Sensitivity: 0.6500 GAPI/cps