



MIDWEST WIRELINE

DUAL COMP POROSITY LOG

Company Carmen Schmitt Inc.
 Well Rolfs #2
 Field Gregory
 County Ellsworth State Kansas

Company Carmen Schmitt Inc.
 Well Rolfs #2
 Field Gregory
 County Ellsworth
 State Kansas

Location: API #: 15-053-21378-00-00
 2045 FNL 1850 FWL
 SEC 36 TWP 16S RGE 9W
 Permanent Datum Ground Level Elevation 1764
 Log Measured From Kelly Bushing
 Drilling Measured From Kelly Bushing
 Other Services
 DIL/MEL
 K.B. 1774
 D.F.
 G.L. 1764

Date	12/21/2021						
Run Number	One						
Type Log	CNL/CDL						
Depth Driller	3340						
Depth Logger	3341						
Bottom Logged Interval	3312						
Top Logged Interval	2500						
Type Fluid In Hole	Chemical						
Salinity, PPM CL	6000						
Density	9.1						
Level	Full						
Max. Rec. Temp. F	109						
Operating Rig Time	3 Hours						
Equipment -- Location	P-24 Hays						
Recorded By	D. Schmidt						
Witnessed By	Brad Rine						
Borehole Record							
Run No.	Bit	From	To	Size	Wgt.	From	To
One	12.25	0	249	8.625	23	0	249
Two	7.875	249	TD				
Casing Record							

<<< Fold Here >>>

All interpretations are opinions based on inferences from electrical or other measurements and Midwest Wireline Services, LLC cannot and does not guarantee the accuracy or correctness of any interpretation, and Midwest Wireline Services, LLC will not be liable or responsible for any loss, costs, damages, or expenses incurred or sustained by anyone resulting from any interpretation made by any of our officers, agents or employees.

Comments


N/A DENOTES NOT AVAILABLE OR NON-APPLICABLE.

Ellsworth,
 SW on Hwy 156 to 10 Rd, South to R Rd,
 1/2 East, 1/2 South, 1/2 East,
 North and East to location

Log Measured From: Kelly Bushing 10 Ft. Above Permanent Datum

THANK YOU FOR USING MIDWEST WIRELINE LLC
 785-625-3858

Your Midwest Wireline Crew		This Log Record Was Witnessed By	
Engineer: D. Schmidt	Operator:	Primary Witness: Brad Rine	Secondary Witness:
Operator:	Operator:	Secondary Witness:	Secondary Witness:
Operator:		Secondary Witness:	

Sensor	Offset (ft)	Schematic	Description	Length (ft)	O.D. (in)	Weight (lb)
GR	40.33		GR-M&W (101)	3.00	3.50	50.00
CNLSC CNSSC	37.23 36.48		CNT-M&W (207-MW)	5.00	3.50	100.00
LSD DCAL SSD	28.18 28.17 27.68		CDL-M&W (305-05)	8.50	4.00	250.00
MCAL MI MN	19.58 19.58 19.58		ML-PSIML (402)	7.58	4.00	65.00
RLL3F RLL3	15.50 15.50					
CILD	8.33		DIL-M&W (501 HT)	18.25	3.50	220.00
CILM	4.50					
SP	0.20					

Dataset: carmen schmitt_rolfs 2.db: field/well/stkml/pass3.12
 Total length: 42.33 ft
 Total weight: 685.00 lb
 O.D.: 4.00 in

Log Variables

DatabaseC:\ProgramData\Warrior\Data\carmen schmitt_rolfs 2.db
 Dataset field/well/stkml/pass3.12/_vars_

Top - Bottom

A	BOREID in	BOTTEMP degF	CASEOD in	CASETHCK in	FLUIDDEN g/cc	M	MATRXDEN g/cc
1	7.875	109	5.5	0	1	2	2.71
NPORSEL	PERFS	SNDERR mmho/m	SNDERRM mmho/m	SPSHIFT mV	SRFTEMP degF	SZCOR	TDEPTH ft
Limestone	0	0	0	310	30	Off	3341

Variable Description

A : Cement Factor (a)
 BOREID : Borehole I.D.
 BOTTEMP : Bottom Hole Temperature
 CASEOD : Casing O.D.
 CASETHCK : Casing Thickness
 FLUIDDEN : Fluid Density
 M : Cement Exp (m)
 MATRXDEN : Matrix Density

NPORSEL : Neutron Porosity Curve Select
 PERFS : Perforation Flag
 SNDERR : Deep Sonde Error Correction
 SNDERRM : Medium Sonde Error Correction
 SPSHIFT : S.P. Baseline Offset
 SRFTEMP : Surface Temperature
 SZCOR : CN Size Cor. ?
 TDEPTH : Total Depth



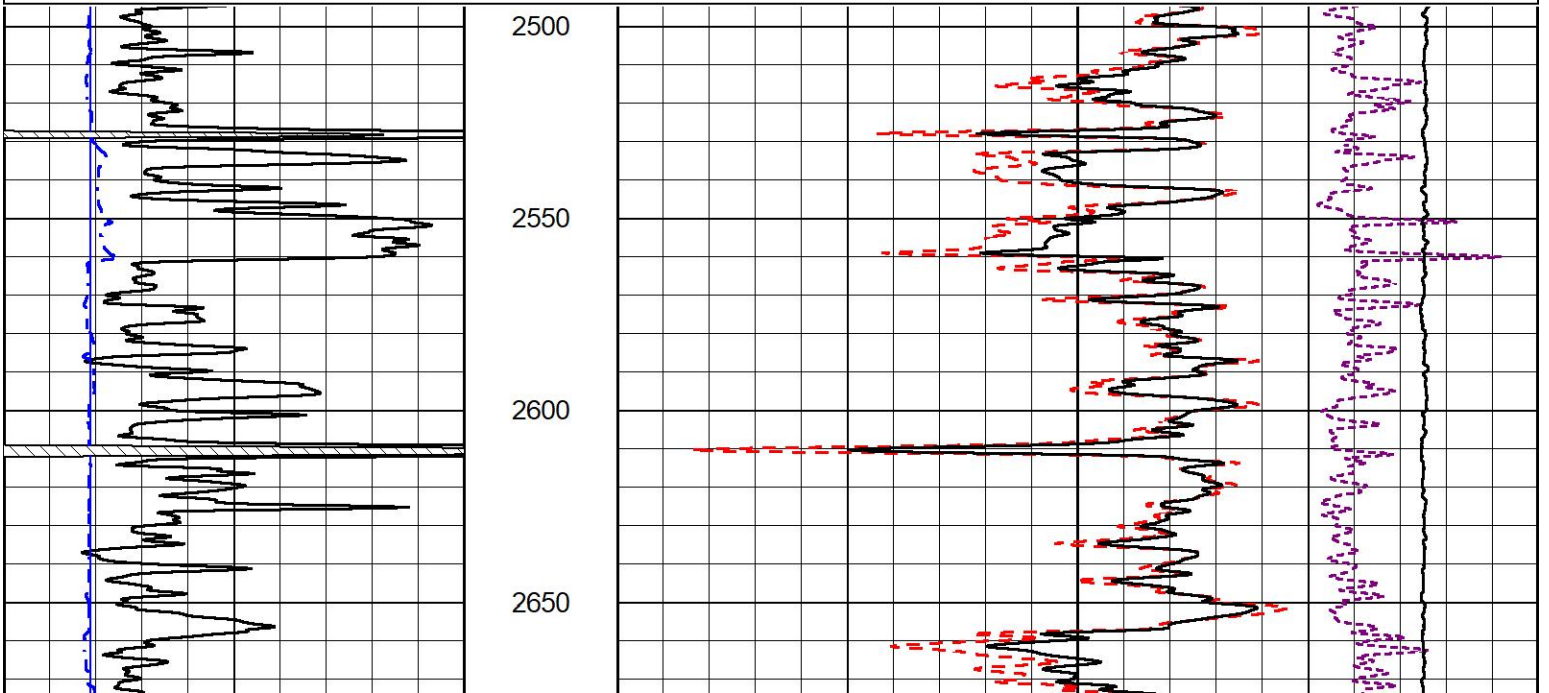
2" SCALE BULK DENSITY

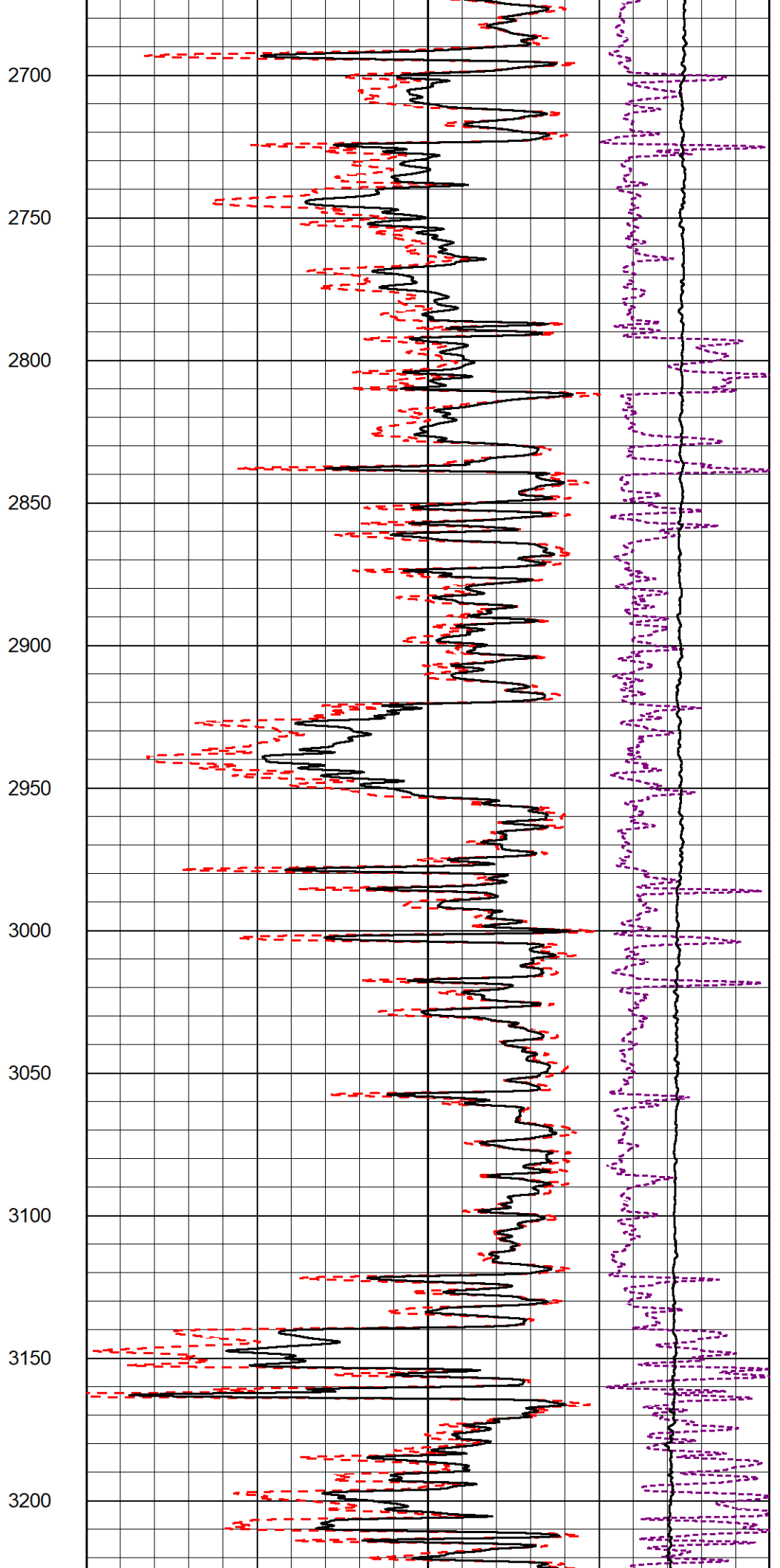
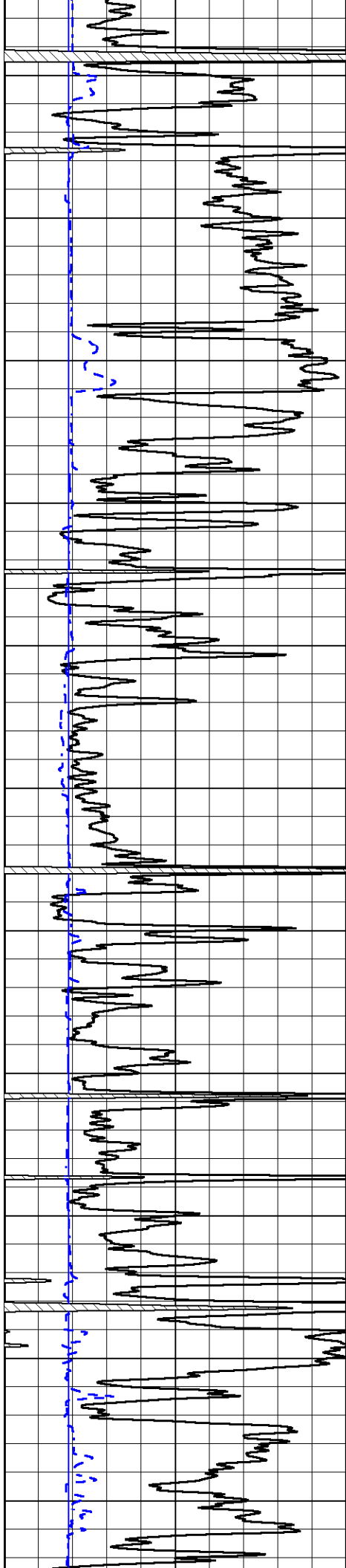
MAIN PASS

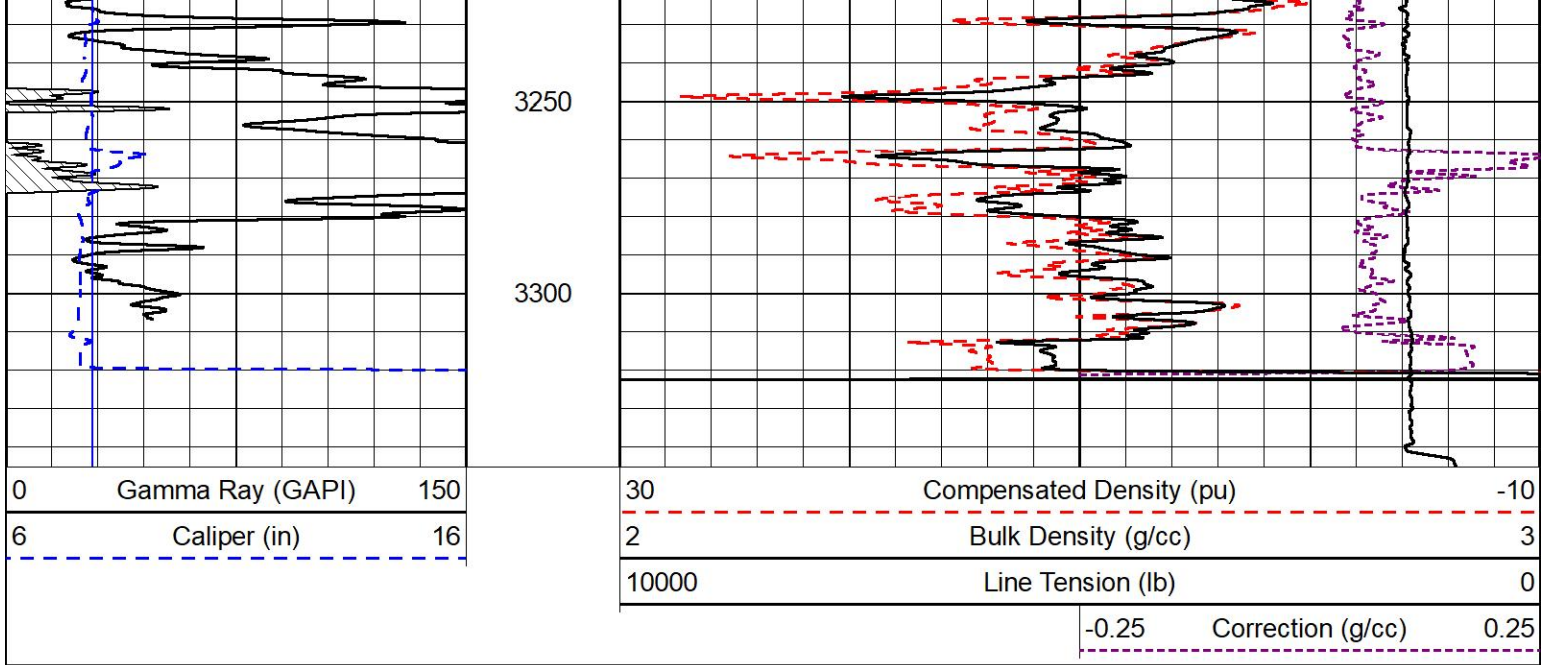
Database File carmen schmitt_rolfs 2.db
 Dataset Pathname stkml/pass4.1
 Presentation Format _cdl
 Dataset Creation Tue Dec 21 11:43:35 2021
 Charted by Depth in Feet scaled 1:600

0	Gamma Ray (GAPI)	150
6	Caliper (in)	16

30	Compensated Density (pu)	-10
2	Bulk Density (g/cc)	3
10000	Line Tension (lb)	0
-0.25	Correction (g/cc)	0.25



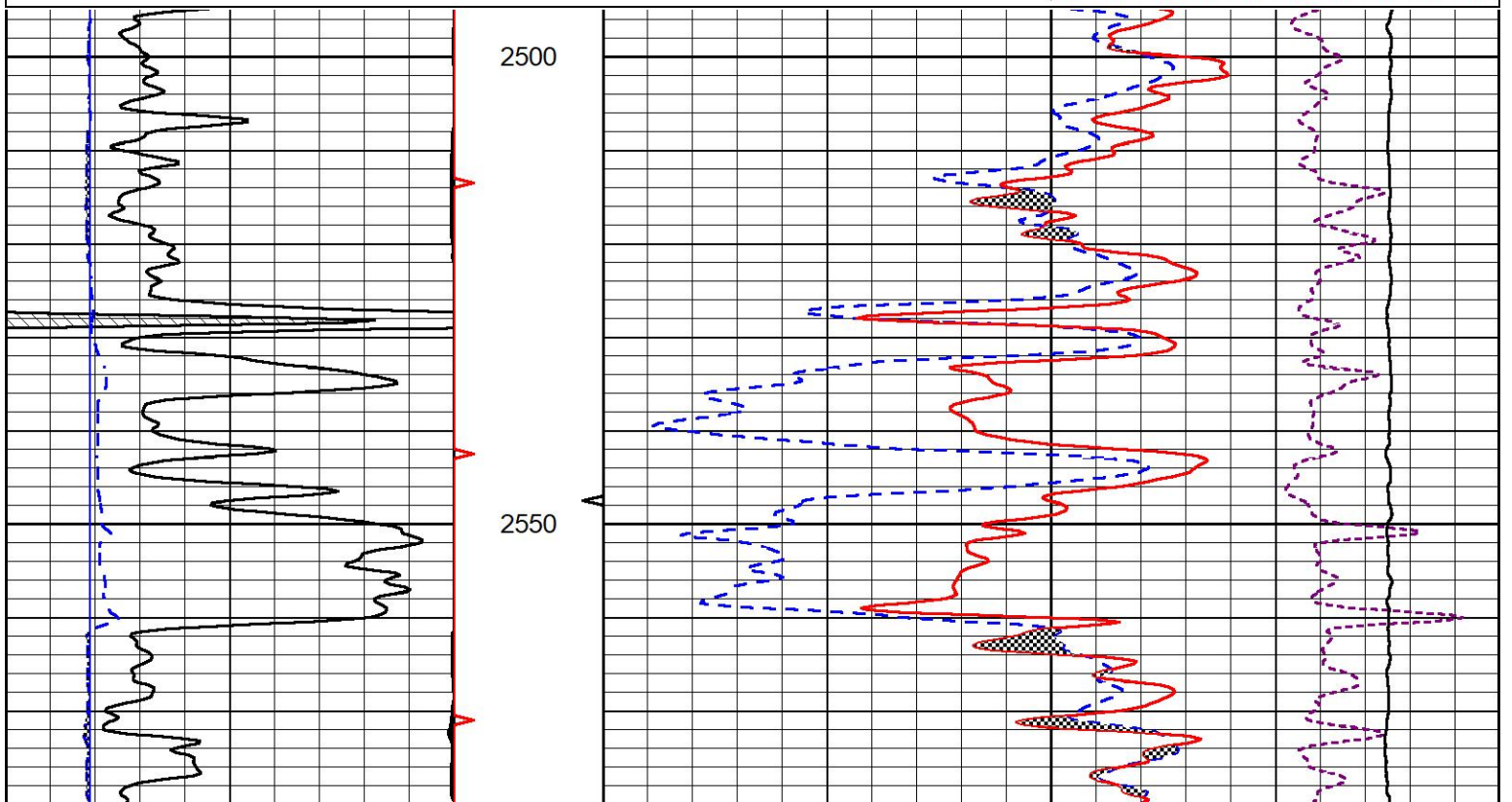
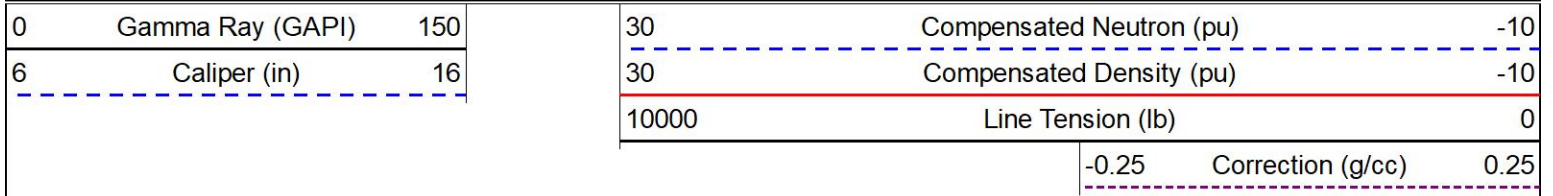


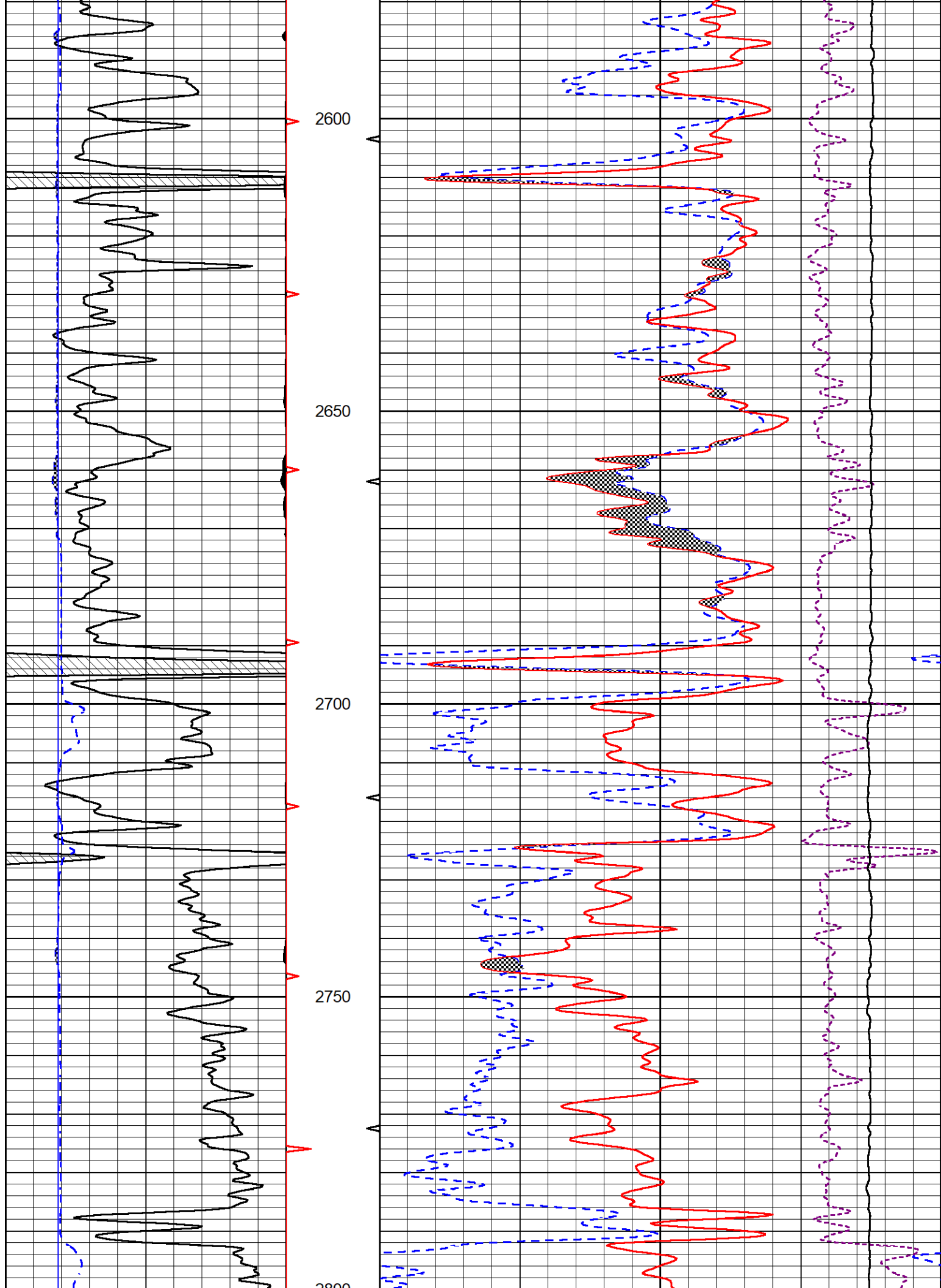


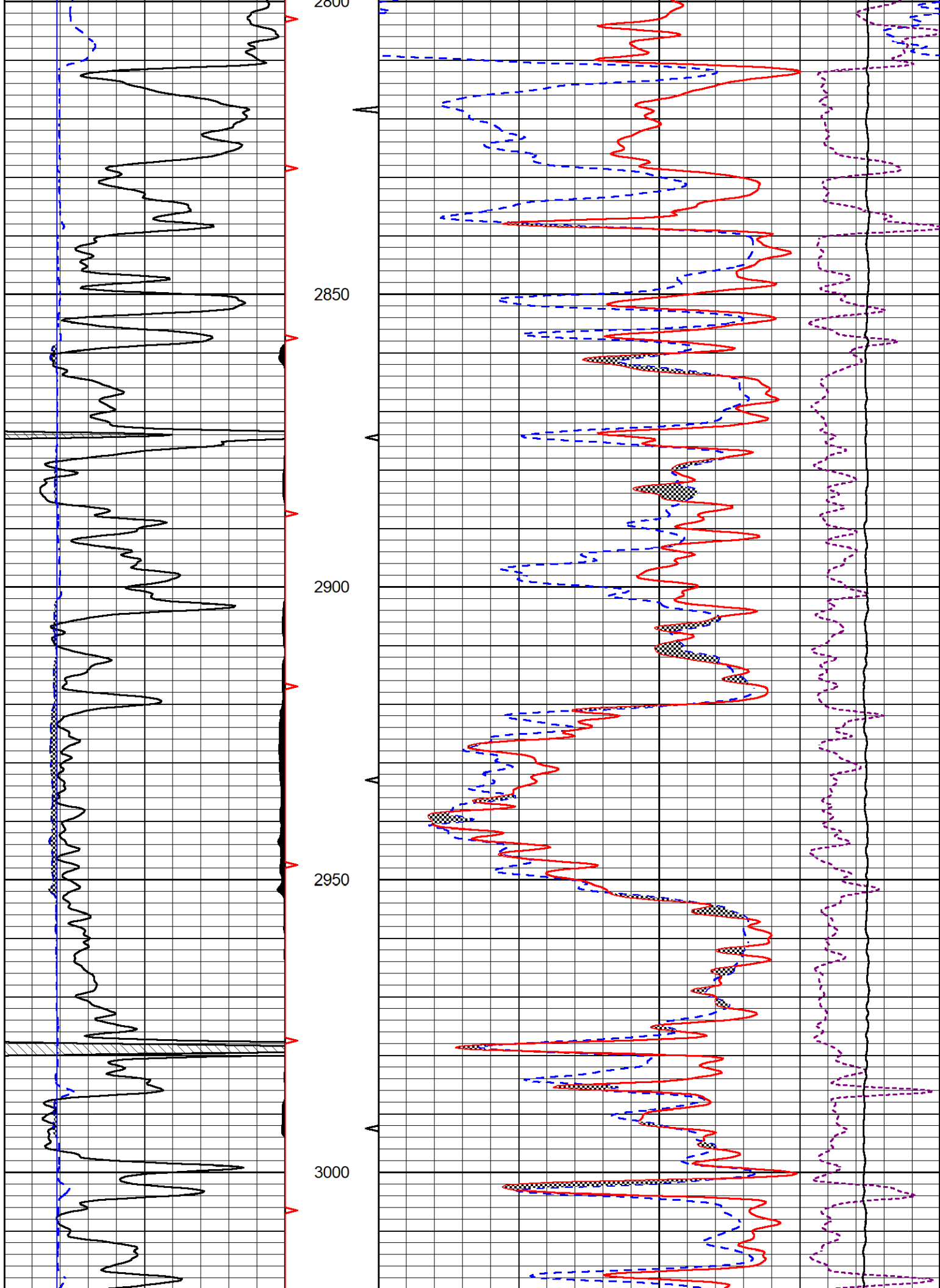
DETAIL SECTION

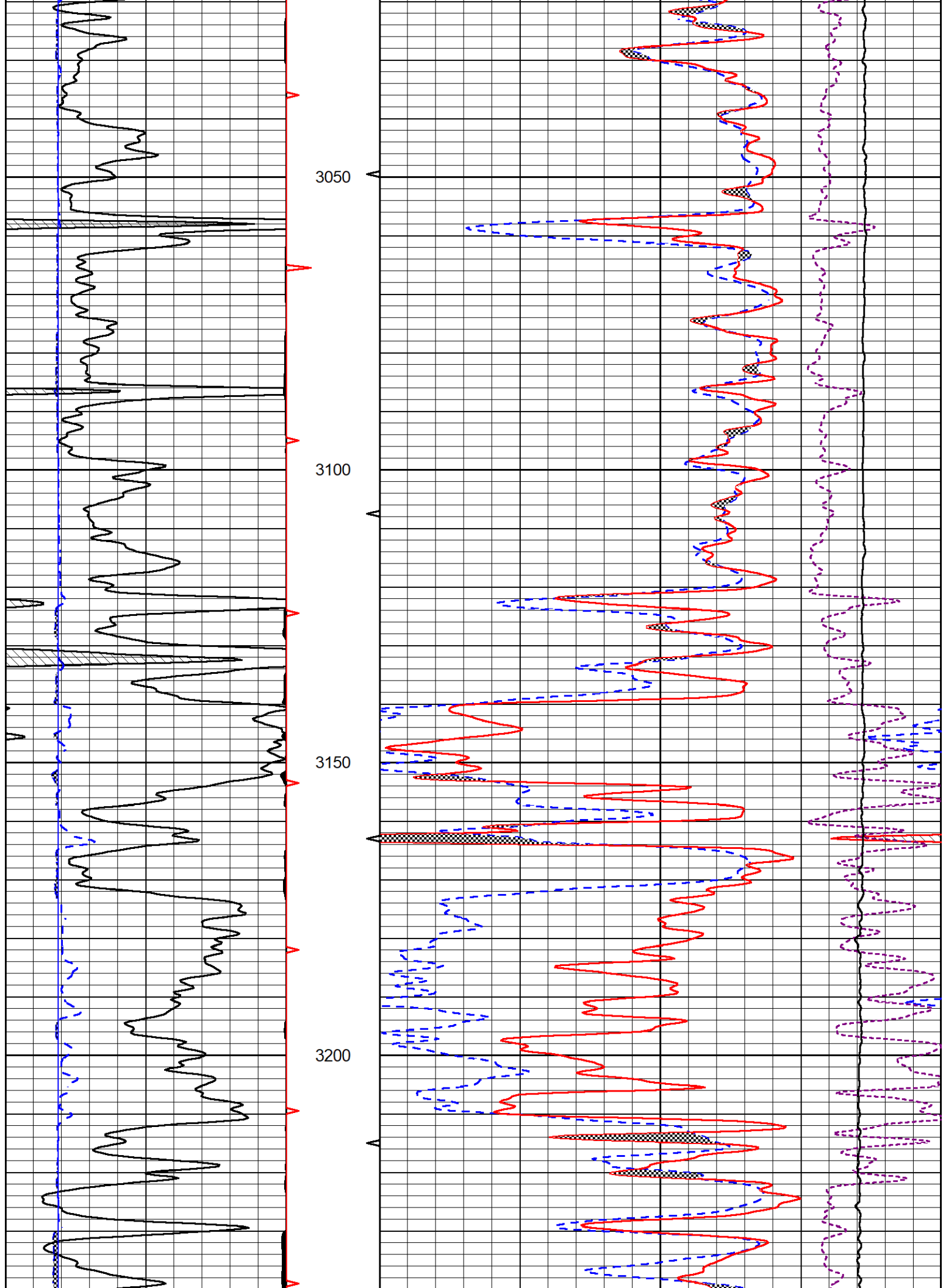
MAIN PASS

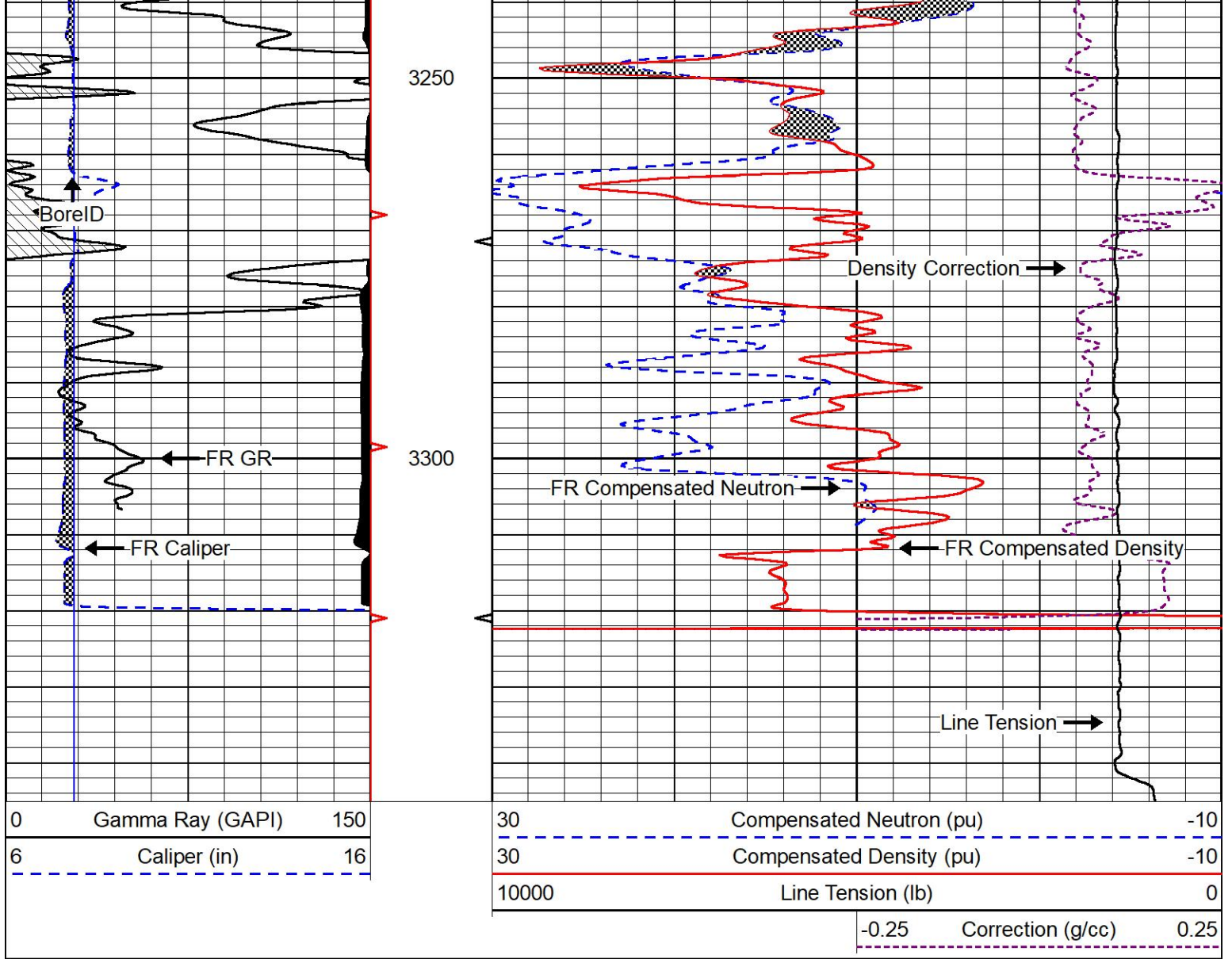
Database File carmen schmitt_rolfs 2.db
 Dataset Pathname stkml/pass3.1
 Presentation Format _CNDLS~1
 Dataset Creation Tue Dec 21 11:36:39 2021
 Charted by Depth in Feet scaled 1:240







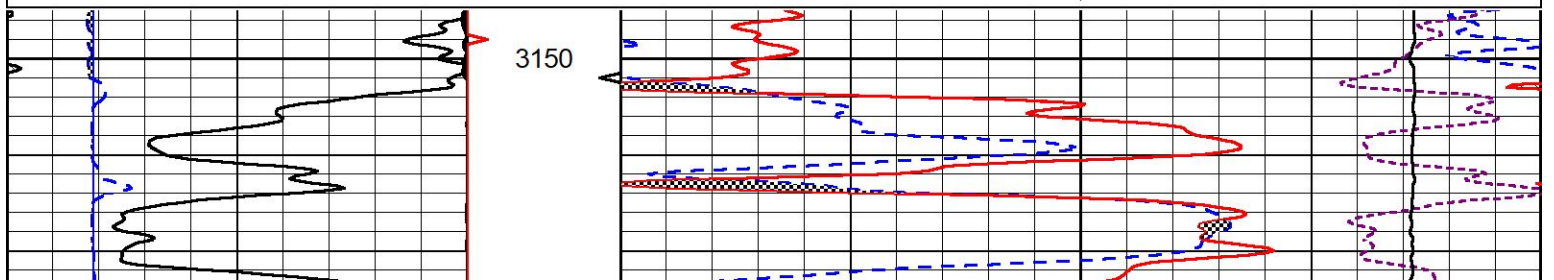
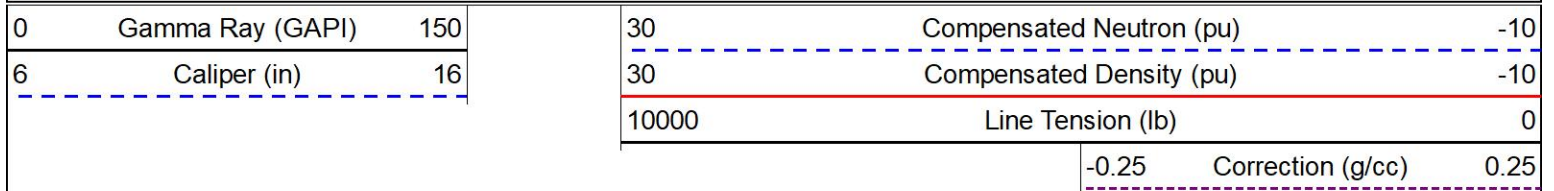


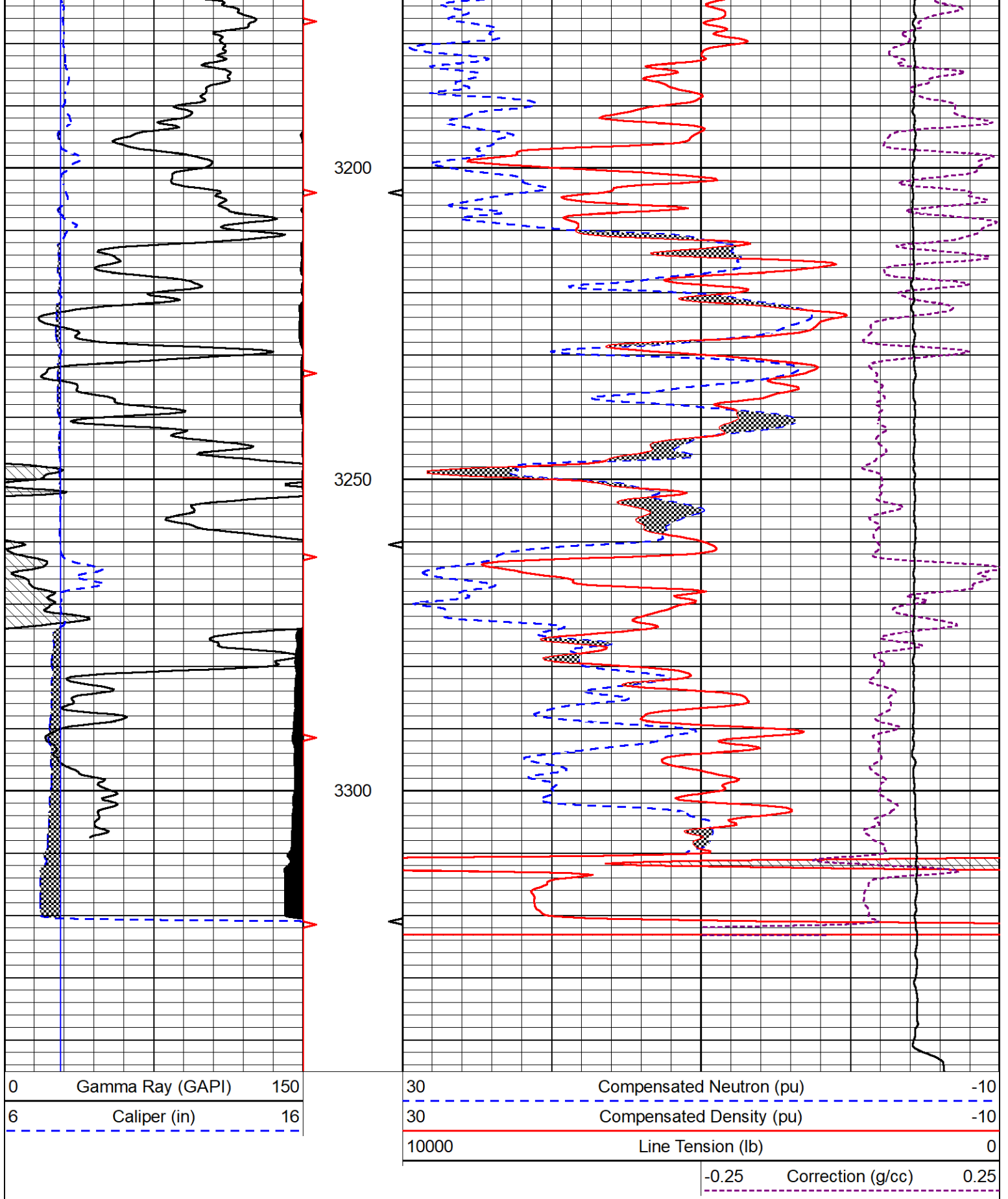


REPEAT SECTION

REPEAT PASS

Database File carmen schmitt_rolfs 2.db
 Dataset Pathname stkml/pass2.1
 Presentation Format _CNDLS~1
 Dataset Creation Tue Dec 21 11:03:31 2021
 Charted by Depth in Feet scaled 1:240





Calibration Report

Database File carmen schmitt_rolfs 2.db
 Dataset Pathname stkml/pass3.12
 Dataset Creation Tue Dec 21 10:59:49 2021

Serial-Model: 501 HT-M&W
 Surface Cal Performed: Mon Dec 20 13:26:03 2021

Loop:	Readings		References			Results	
	Air	Loop	Air	Loop		m	b
Deep	83.639	487.104	0.000	183.000	mmho/m	0.420	-35.500
Medium	113.335	1585.690	0.000	442.000	mmho/m	0.300	-33.500

Microlog Calibration Report

Serial-Model: 402-PSIML
 Performed: Tue Dec 21 10:30:27 2021

	Readings		References			Results	
	Zero	Cal	Zero	Cal		m	b
Normal	0.0000	1.0000	0.0000	1.0000	Ohm-m	39500.0000	-2.0000
Inverse	0.0000	1.0000	0.0000	1.0000	Ohm-m	22000.0000	0.0000
Caliper	1.0052	1.0858	5.0000	16.5000	in	142.7190	-142.4000

Compensated Density Calibration Report

Serial-Model: 305-05-M&W
 Source #: 20762B
 Master Calibration Performed: Mon Dec 13 15:18:29 2021

Master Calibration

	Density		Far Detector	Near Detector	
Magnesium	1.755	g/cc	8758.11	9709.36	cps
Aluminum	2.630	g/cc	1513.14	5652.54	cps
Spine Angle = 72.88			Density/Spine Ratio = 0.476		
	Size		Reading		
Small Ring	4.00	in	1.75		
Large Ring	14.00	in	1.38		

Compensated Neutron Calibration Report

Serial-Model: 207-MW-M&W
 Source #: 100046B
 Master Calibration Performed: Mon Nov 29 15:06:24 2021

Master Calibration

Detector	Readings	Target	Normalization
Short Space	6240.00 cps	1000.00 cps	1.6025
Long Space	460.00 cps	1000.00 cps	1.9500

Gamma Ray Calibration Report

Serial Number: 101
 Tool Model: M&W
 Performed: Fri Dec 3 15:10:46 2021

Calibrator Value:	500.0	GAPI
Background Reading:	24.0	cps
Calibrator Reading:	637.0	cps
Sensitivity:	0.5500	GAPI/cps



Company	Carmen Schmitt Inc.
Well	Rolfs #2
Field	Gregory
County	Ellsworth
State	Kansas