

MIDWEST WIRELINE

DUAL INDUCTION LOG

Company Carmen Schmitt, Inc.

Well Heyen Trust #1-27

Field

County Ford

State Kansas

Location: API #: 15-057-21062-00-00

1750 FNL 1800 FWL

SEC 27 TWP 28S RGE 26W

Other Services
CNL/CDL
MEL

Company Carmen Schmitt, Inc.
Well Heyen Trust #1-27
Field
County Ford
State Kansas

Date 12/14/2021

Run Number One

Depth Driller 5405

Depth Logger 5402

Bottom Logged Interval 5401

Top Log Interval 1200

Casing Driller 8.625 @ 1234

Casing Logger 1234

Bit Size 7.875

Type Fluid in Hole Chemical

Salinity, ppm CL 5800

Density / Viscosity 9.15 56

pH / Fluid Loss 9.5 8.8

Source of Sample FLOWLINE

Rm @ Meas. Temp 0.30 @ 50

Rmt @ Meas. Temp 0.23 @ 50

Rmc @ Meas. Temp 0.41 @ 50

Permanent Datum	Ground Level	Elevation	2666	Elevation	
Log Measured From	Kelly Bushing			K.B.	2674
Drilling Measured From	Kelly Bushing			D.F.	
				G.L.	2666

<<< Fold Here >>>

All interpretations are opinions based on inferences from electrical or other measurements and Midwest Wireline LLC cannot and does not guarantee the accuracy or correctness of any interpretation, and Midwest Wireline LLC will not be liable or responsible for any loss, costs, damages, or expenses incurred or sustained by anyone resulting from any interpretation made by any of our officers, agents or employees.

Comments

N/A DENOTES NOT AVAILABLE OR NON-APPLICABLE.

Dodge City,
Intersection of Hwy 400 and Hwy 283,
5 South to Saddle Road, 6 West to Rd 105,
4 South to Warrior Rd, 1 5/8 West,
South into

Log Measured From: Kelly Bushing 8 Ft. Above Permanent Datum

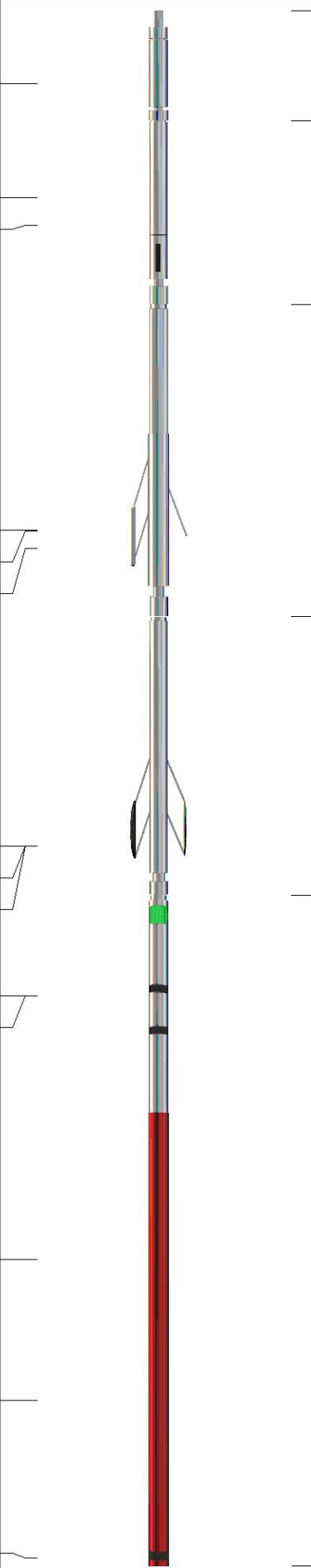
THANK YOU FOR USING MIDWEST WIRELINE LLC
785-625-3858

Your Midwest Wireline Crew

Engineer: D. Schmidt
Operator:
Operator:
Operator:

This Log Record Was Witnessed By

Primary Witness: Brad Rine
Secondary Witness:
Secondary Witness:
Secondary Witness:

Sensor	Offset (ft)	Schematic	Description	Length (ft)	O.D. (in)	Weight (lb)
GR	40.33		GR-M&W (101)	3.00	3.50	50.00
CNLSC CNSSC	37.23 36.48		CNT-M&W (207-MW)	5.00	3.50	100.00
LSD DCAL SSD	28.18 28.17 27.68		CDL-M&W (305-05)	8.50	4.00	250.00
MCAL MI MN	19.58 19.58 19.58		ML-PSIML (401)	7.58	4.00	65.00
RLL3F RLL3	15.50 15.50					
CILD	8.33		DIL-M&W (501 HT)	18.25	3.50	220.00
CILM	4.50					
SP	0.20					

Dataset: carmen schmitt_heyen trust 1-27.db: field/well/stkml/pass3.3
 Total length: 42.33 ft
 Total weight: 685.00 lb
 O.D.: 4.00 in

Log Variables

DatabaseC:\ProgramData\Warrior\Data\carmen schmitt_heyen trust 1-27.db
 Dataset field/well/stkml/pass3.3/_vars_

Top - Bottom

A	BOREID in	BOTTEMP degF	CASEOD in	CASETHCK in	FLUIDDEN g/cc	M	MATRXDEN g/cc
1	7.875	130	5.5	0	1	2	2.71
NPORSEL	PERFS	SNDERR mmho/m	SNDERRM mmho/m	SPSHIFT mV	SRFTEMP degF	SZCOR	TDEPTH ft
Limestone	0	0	0	270	50	Off	5402

Variable Description

A : Cement Factor (a)
 BOREID : Borehole I.D.
 BOTTEMP : Bottom Hole Temperature
 CASEOD : Casing O.D.
 CASETHCK : Casing Thickness
 FLUIDDEN : Fluid Density
 M : Cement Exp (m)
 MATRXDEN : Matrix Density

NPORSEL : Neutron Porosity Curve Select
 PERFS : Perforation Flag
 SNDERR : Deep Sonde Error Correction
 SNDERRM : Medium Sonde Error Correction
 SPSHIFT : S.P. Baseline Offset
 SRFTEMP : Surface Temperature
 SZCOR : CN Size Cor. ?
 TDEPTH : Total Depth

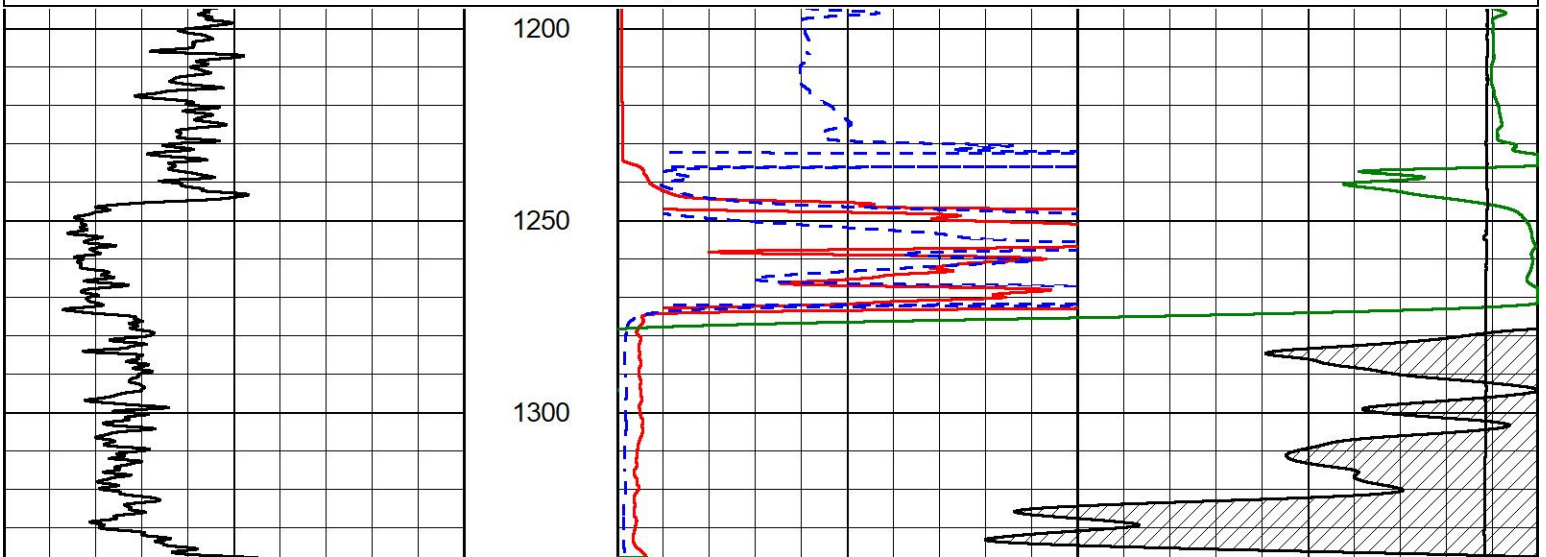


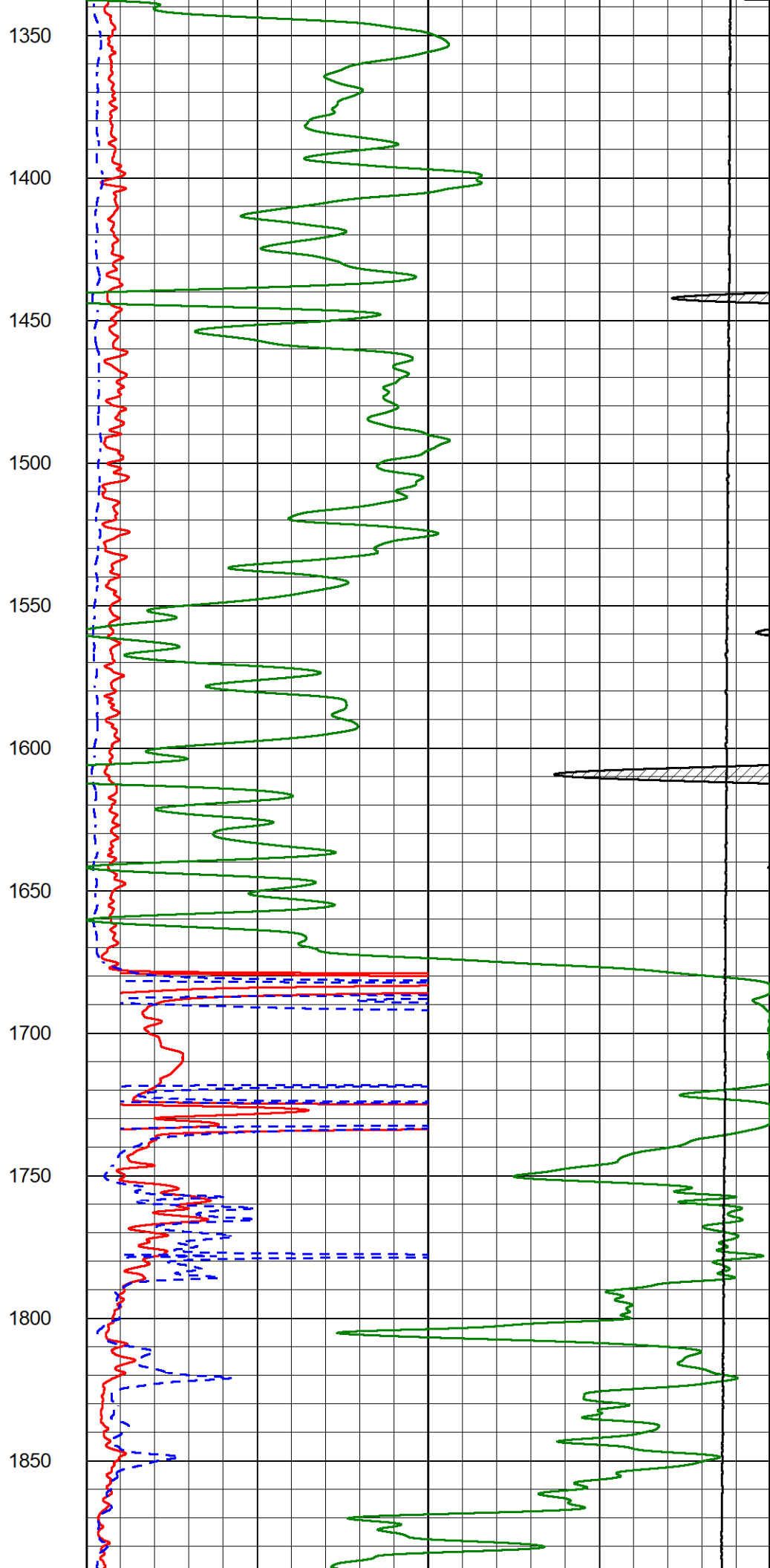
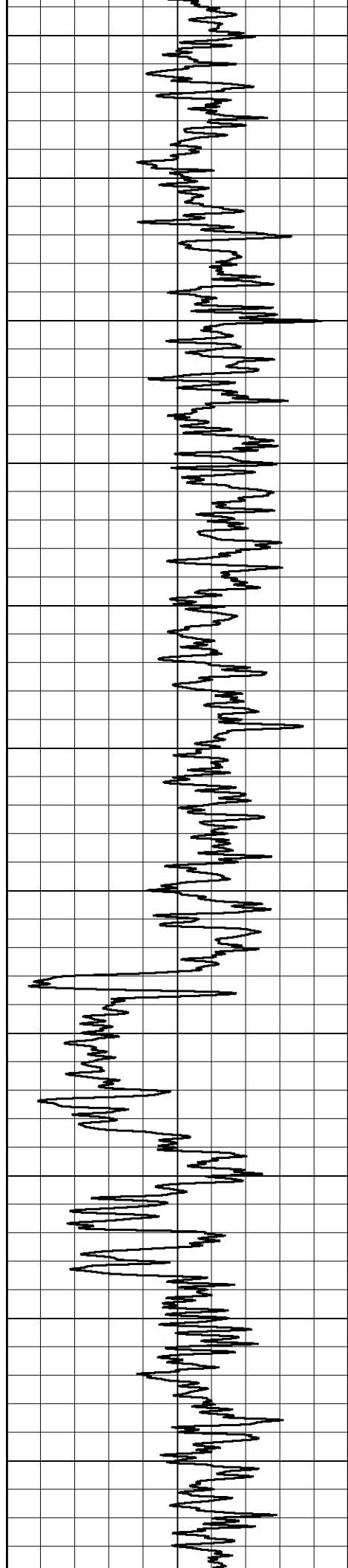
2" SCALE RESISTIVITY

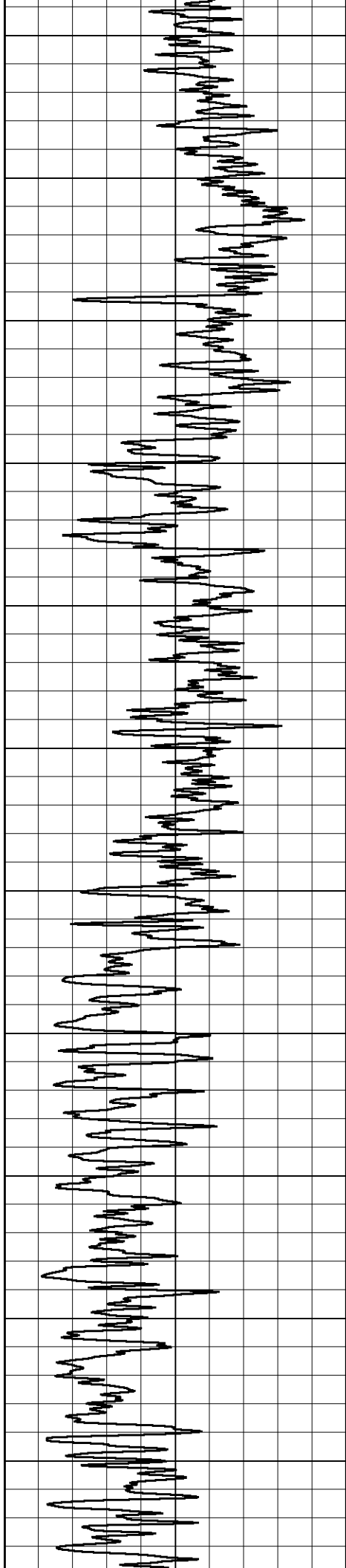
MAIN PASS

Database File carmen schmitt_heyen trust 1-27.db
 Dataset Pathname stkml/pass5.1
 Presentation Format _dil2in
 Dataset Creation Wed Dec 15 00:10:31 2021
 Charted by Depth in Feet scaled 1:600

0	Gamma Ray (GAPI)	150	1000	Conductivity (mmho/m)	0
			15000	Line Tension (lb)	0
0	Shallow Resistivity (Ohm-m)	50			
0	Deep Resistivity (Ohm-m)	50			
	Shallow Resistivity				
50	(Ohm-m)	200			
50	Deep Resistivity (Ohm-m)	200			







1900

1950

2000

2050

2100

2150

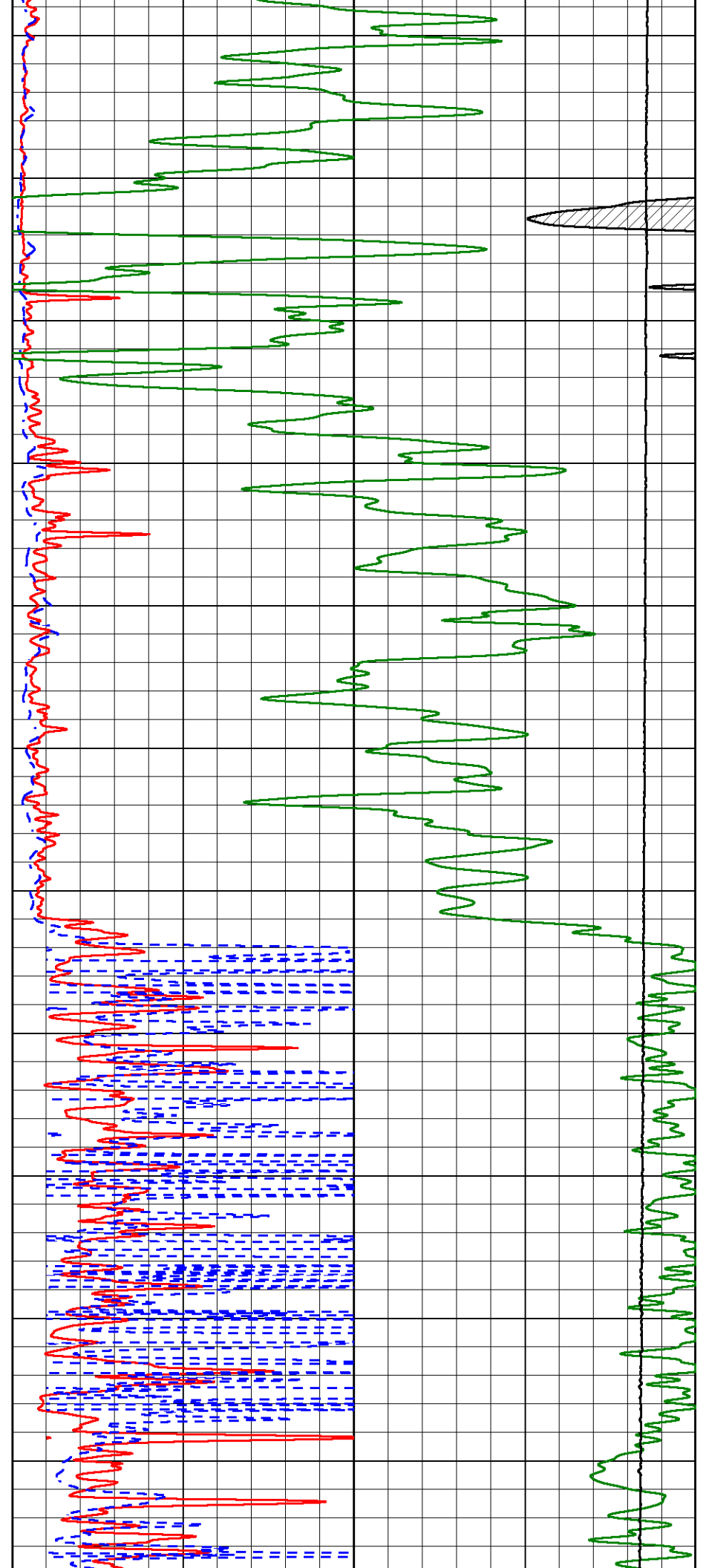
2200

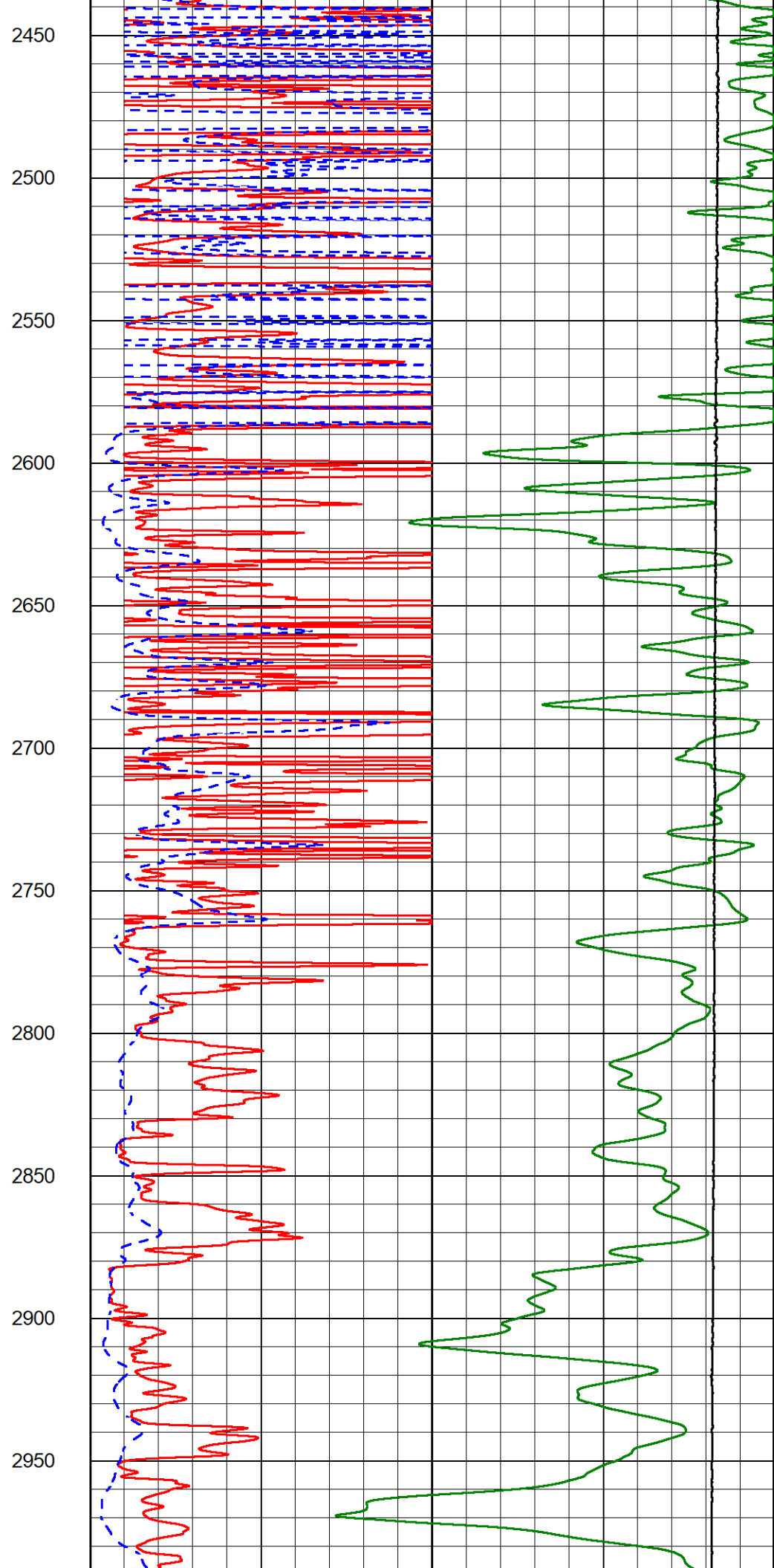
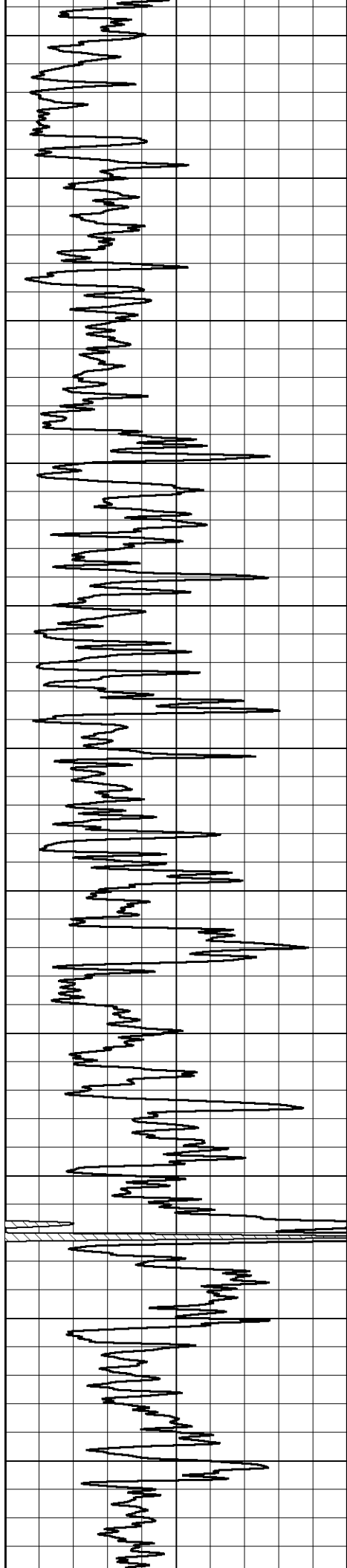
2250

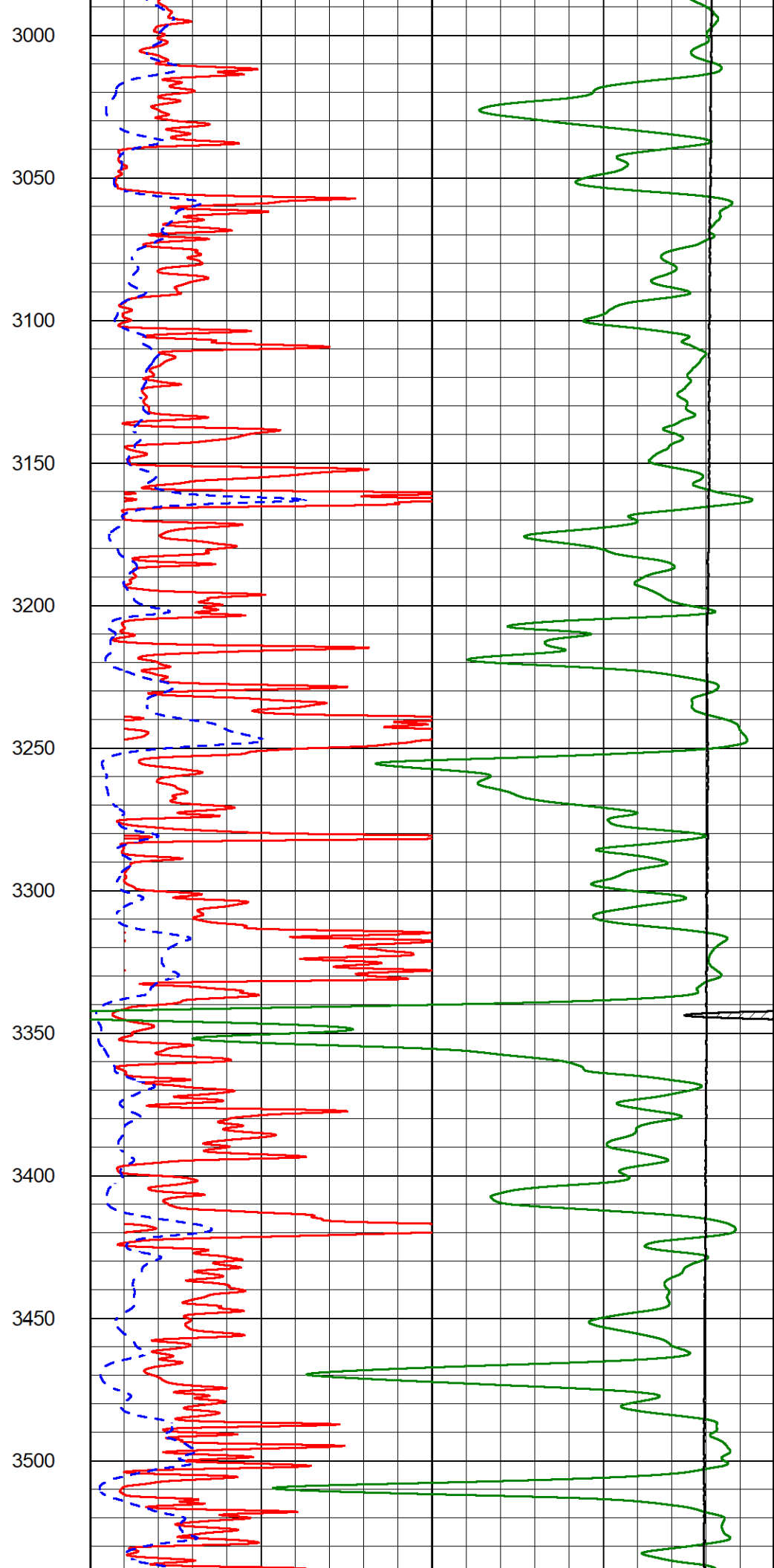
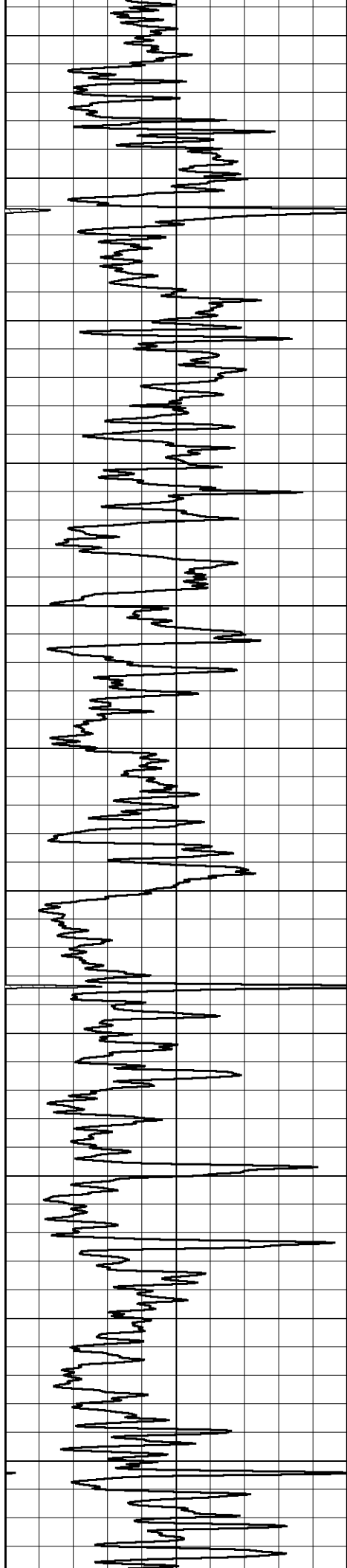
2300

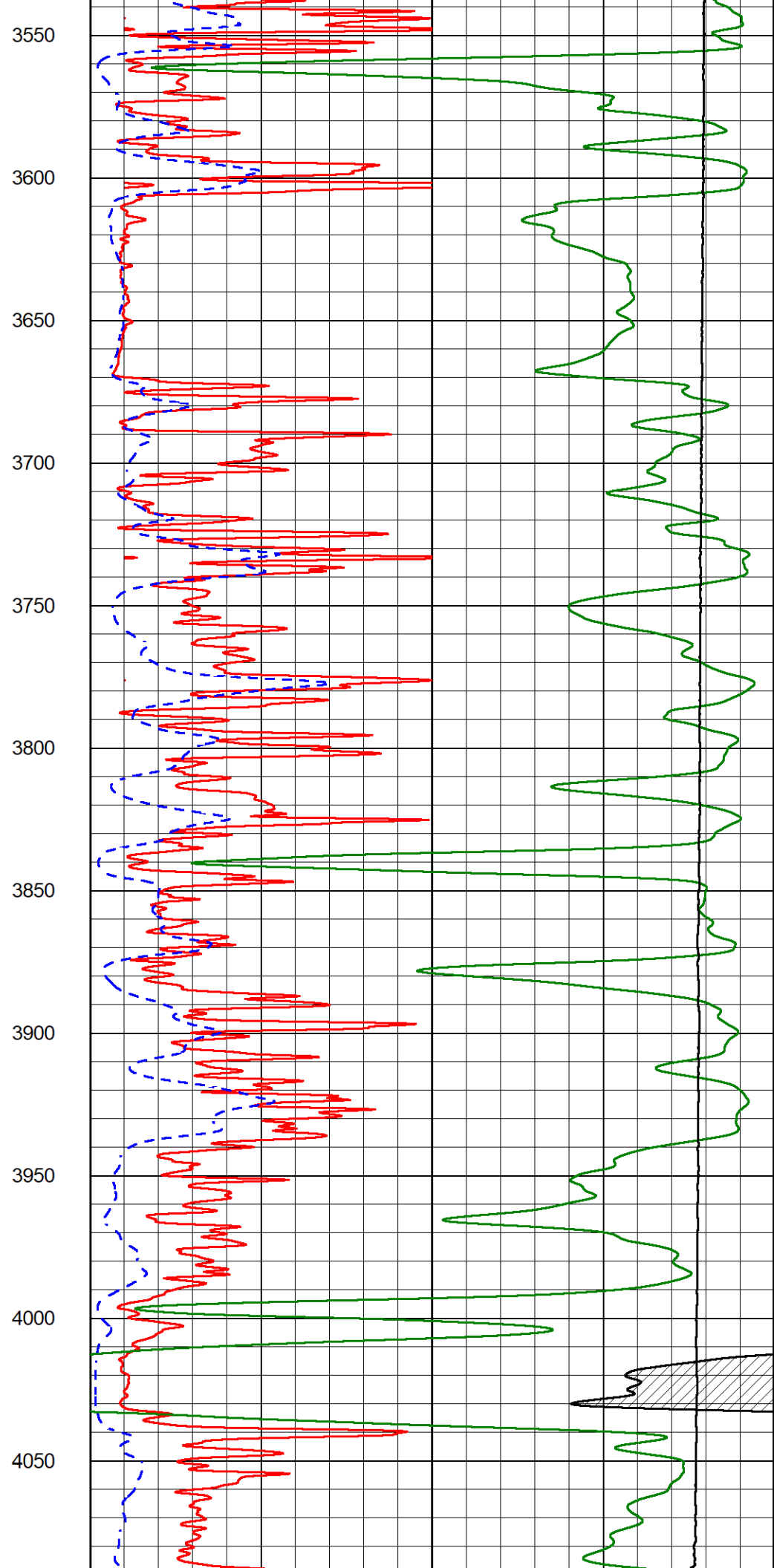
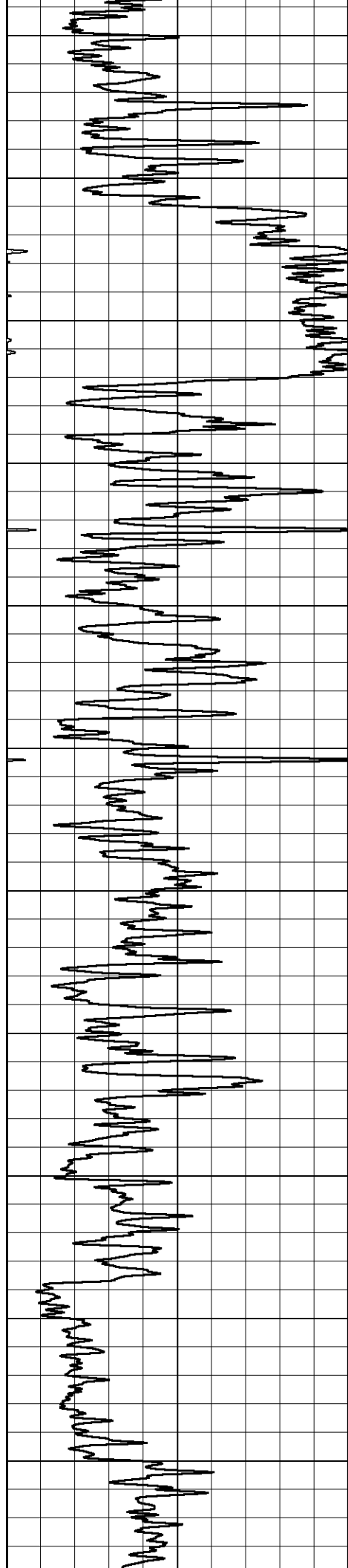
2350

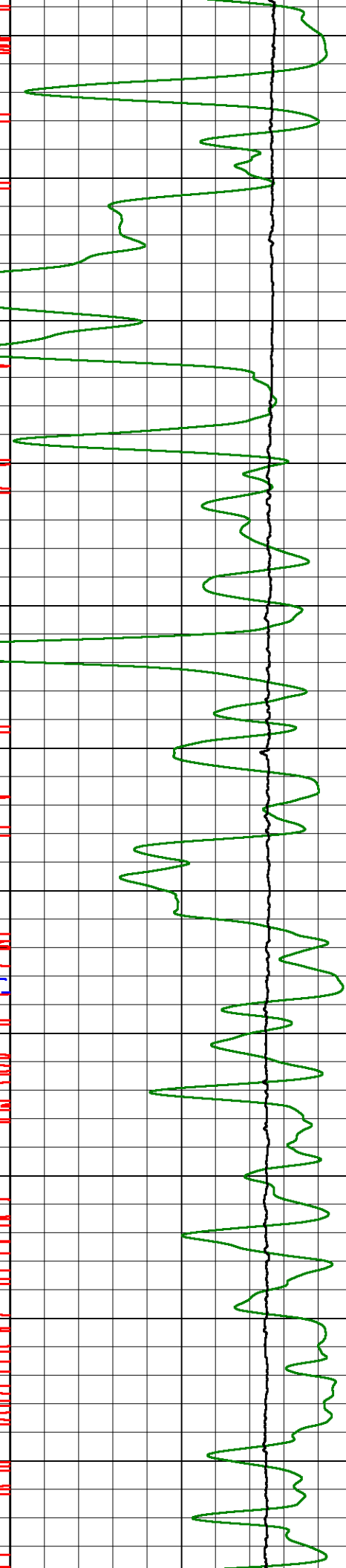
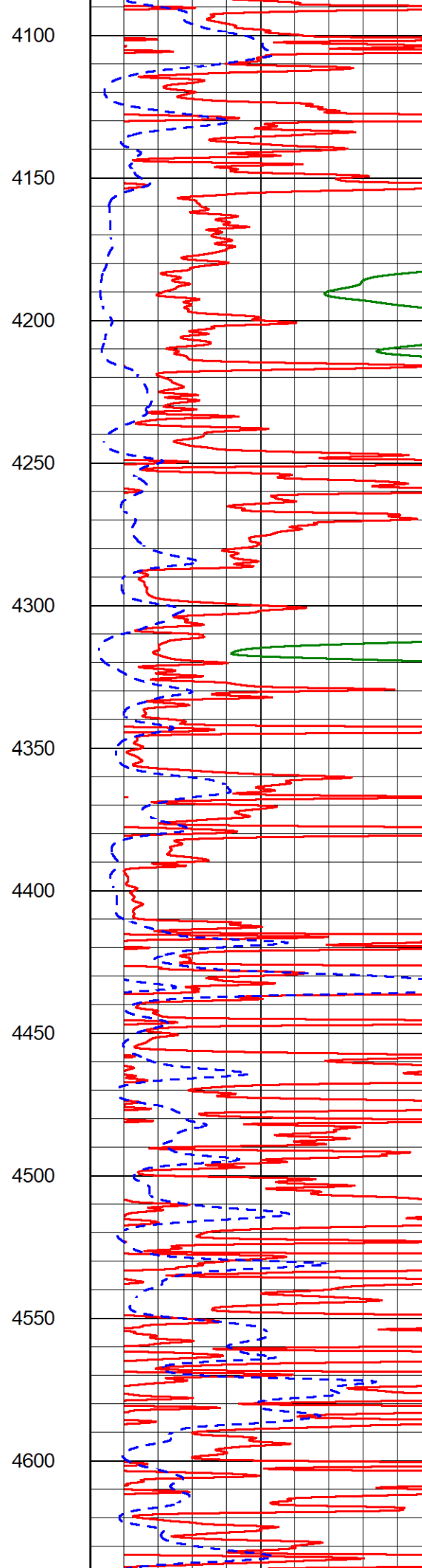
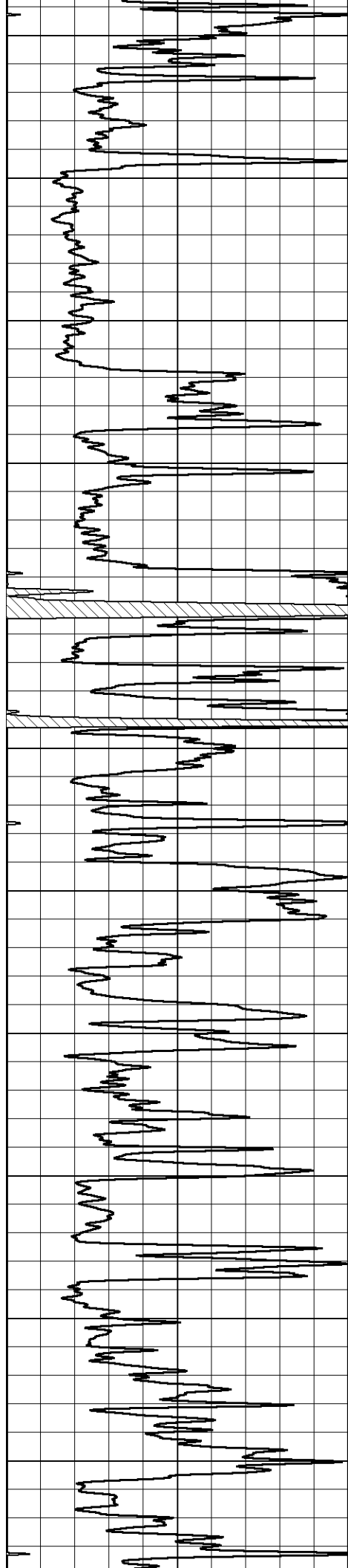
2400

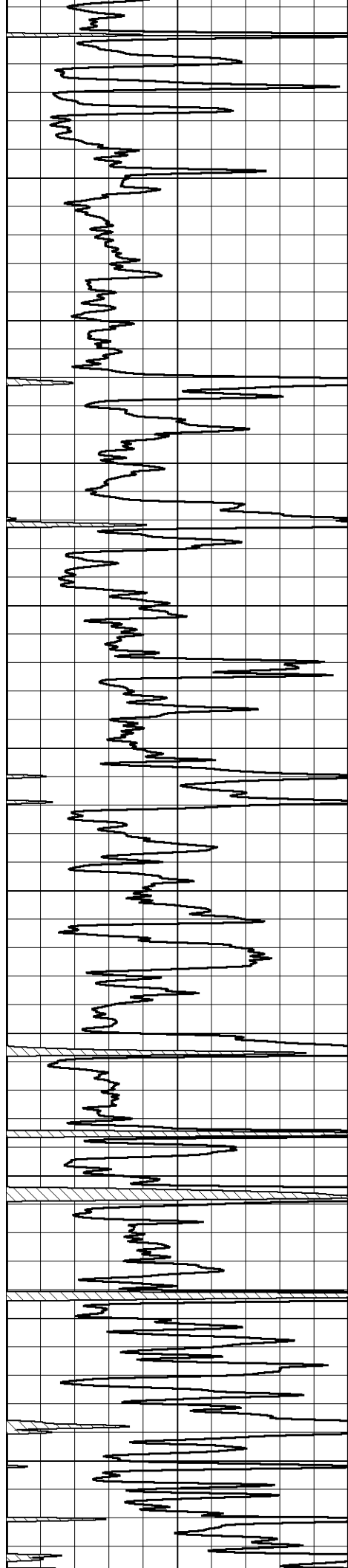












4650

4700

4750

4800

4850

4900

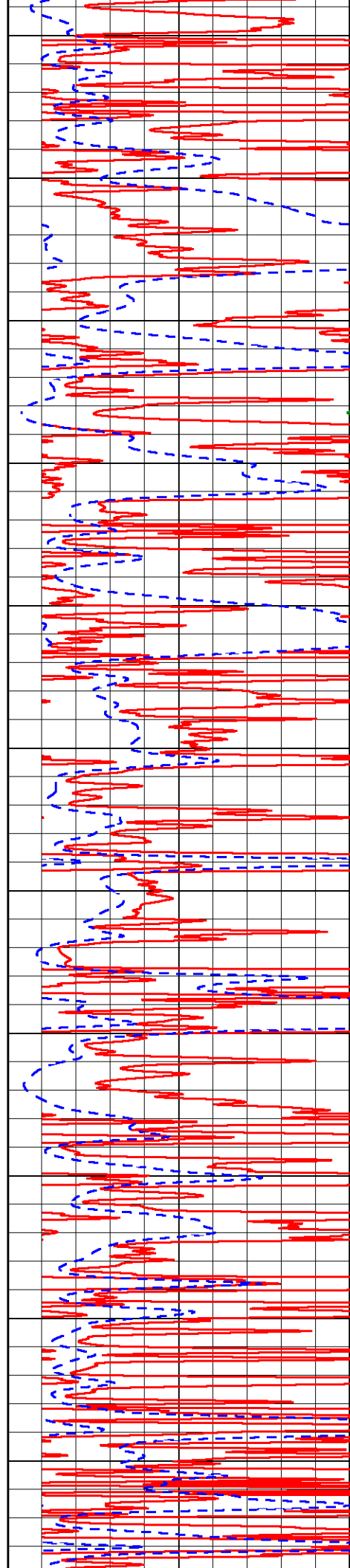
4950

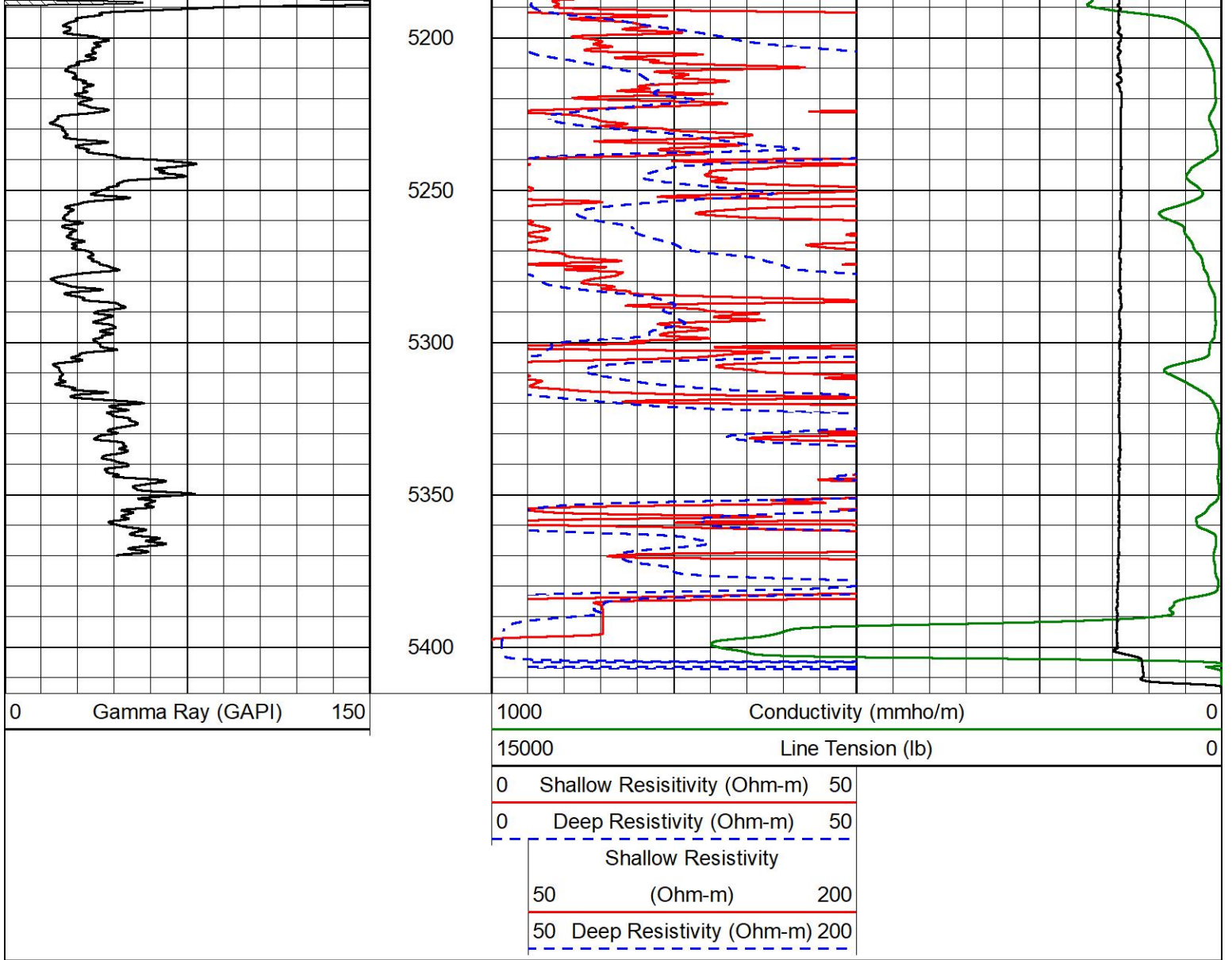
5000

5050

5100

5150

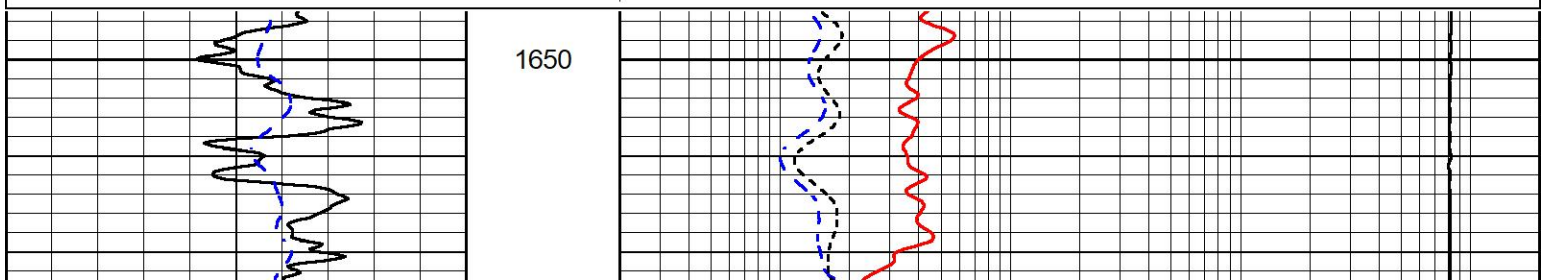
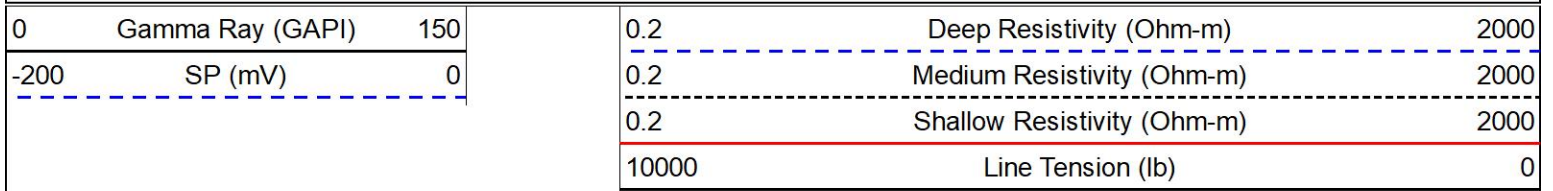


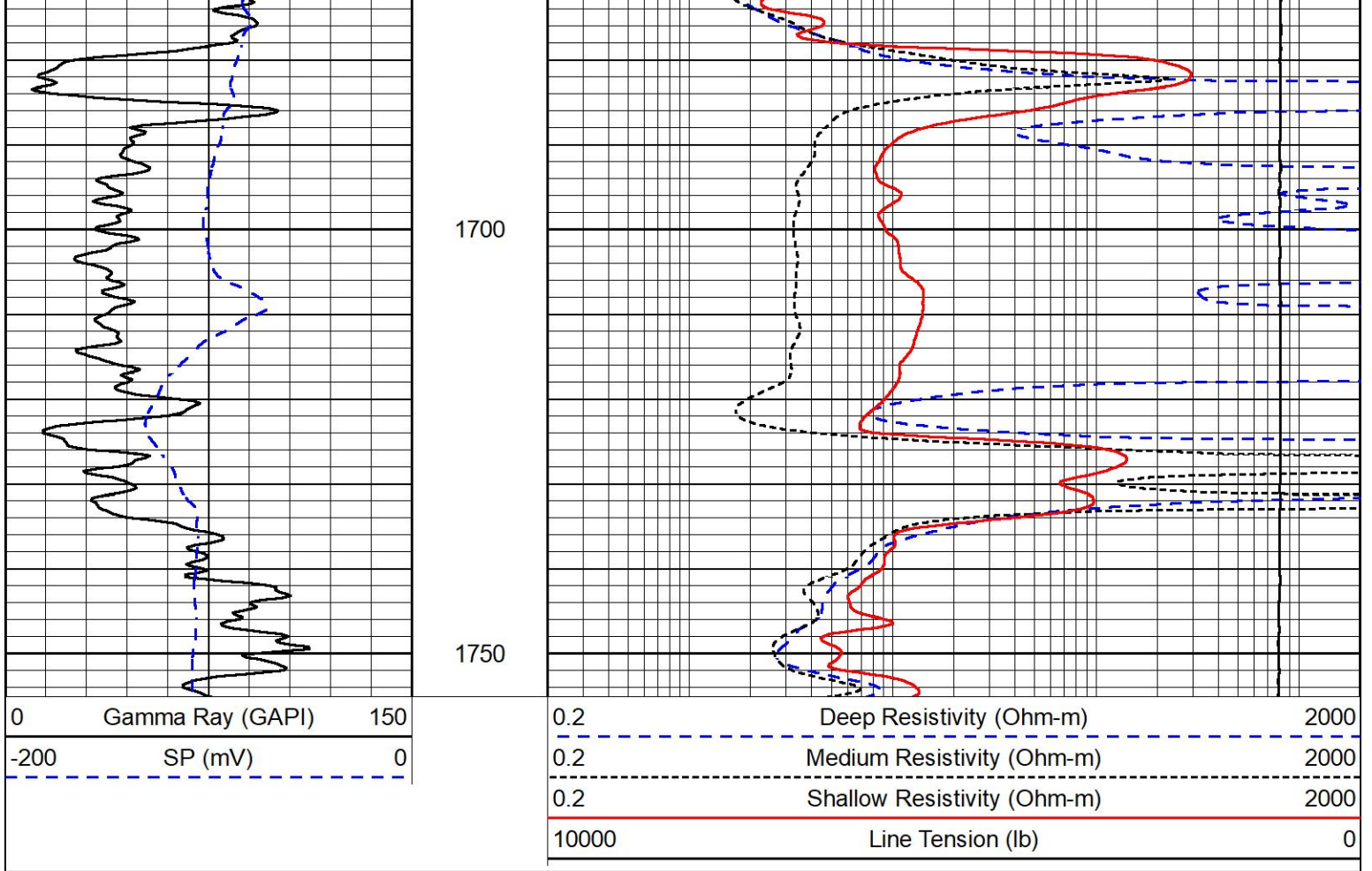


ANHYDRITE SECTION

MAIN PASS

Database File carmen schmitt_heyen trust 1-27.db
 Dataset Pathname stkml/pass6.1
 Presentation Format _dil
 Dataset Creation Wed Dec 15 00:10:38 2021
 Charted by Depth in Feet scaled 1:240

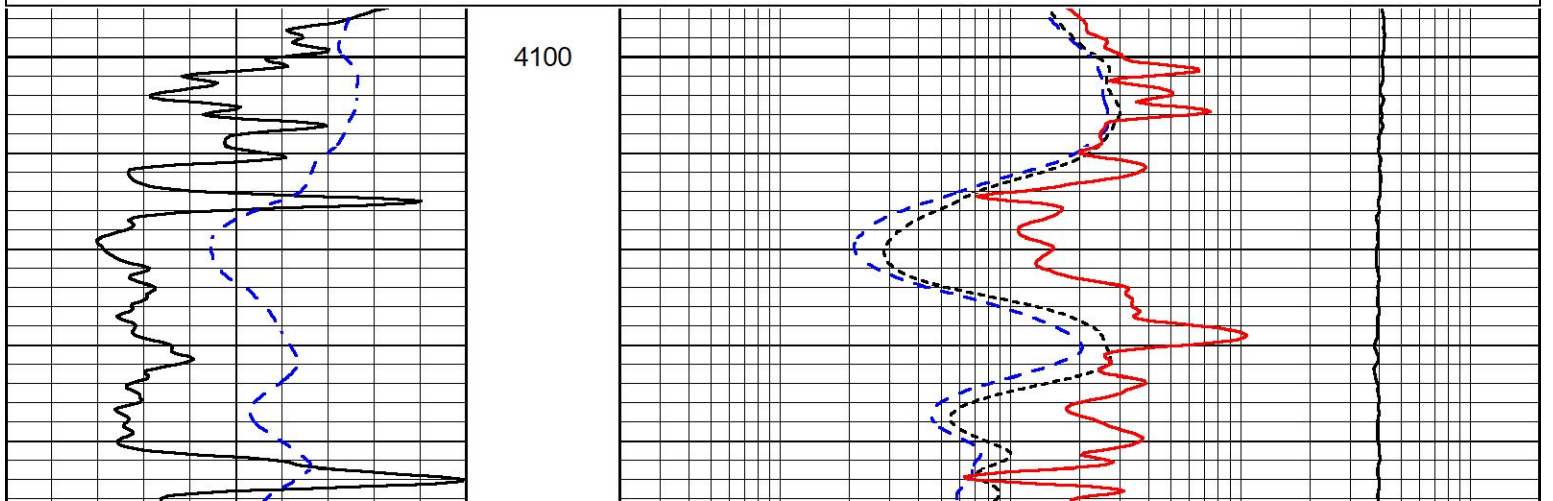
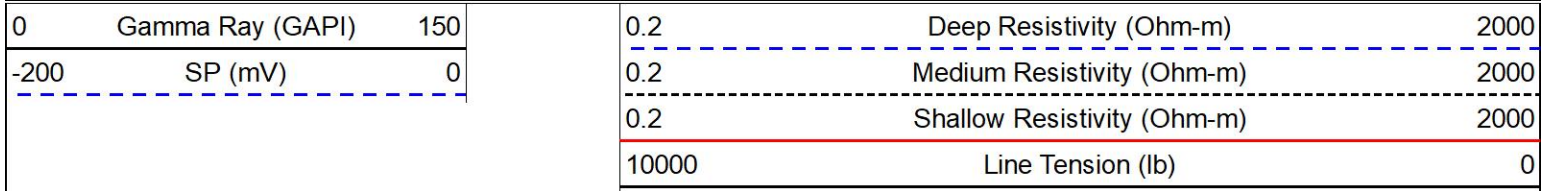


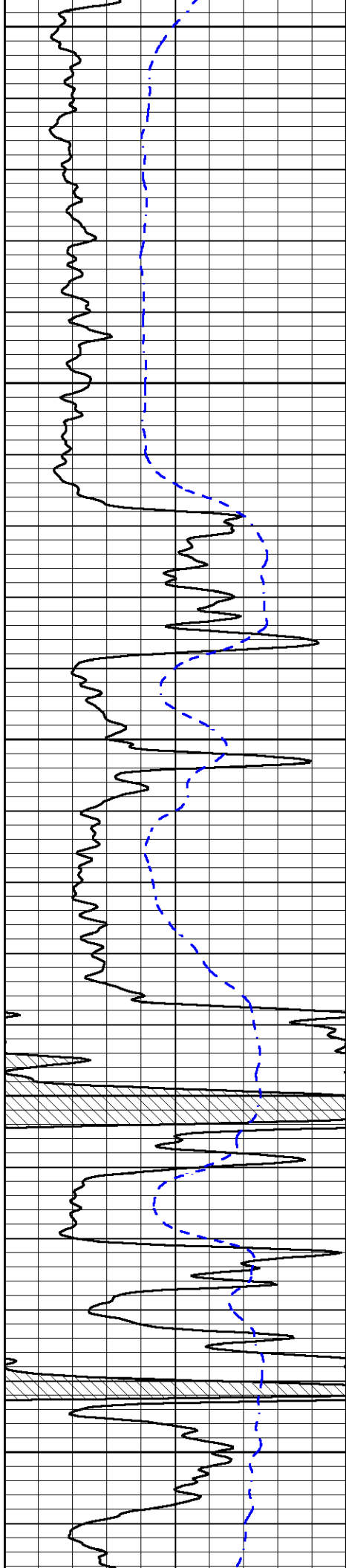


DETAIL SECTION

MAIN PASS

Database File carmen schmitt_heyen trust 1-27.db
 Dataset Pathname stkml/pass3.1
 Presentation Format _dil
 Dataset Creation Wed Dec 15 00:06:46 2021
 Charted by Depth in Feet scaled 1:240





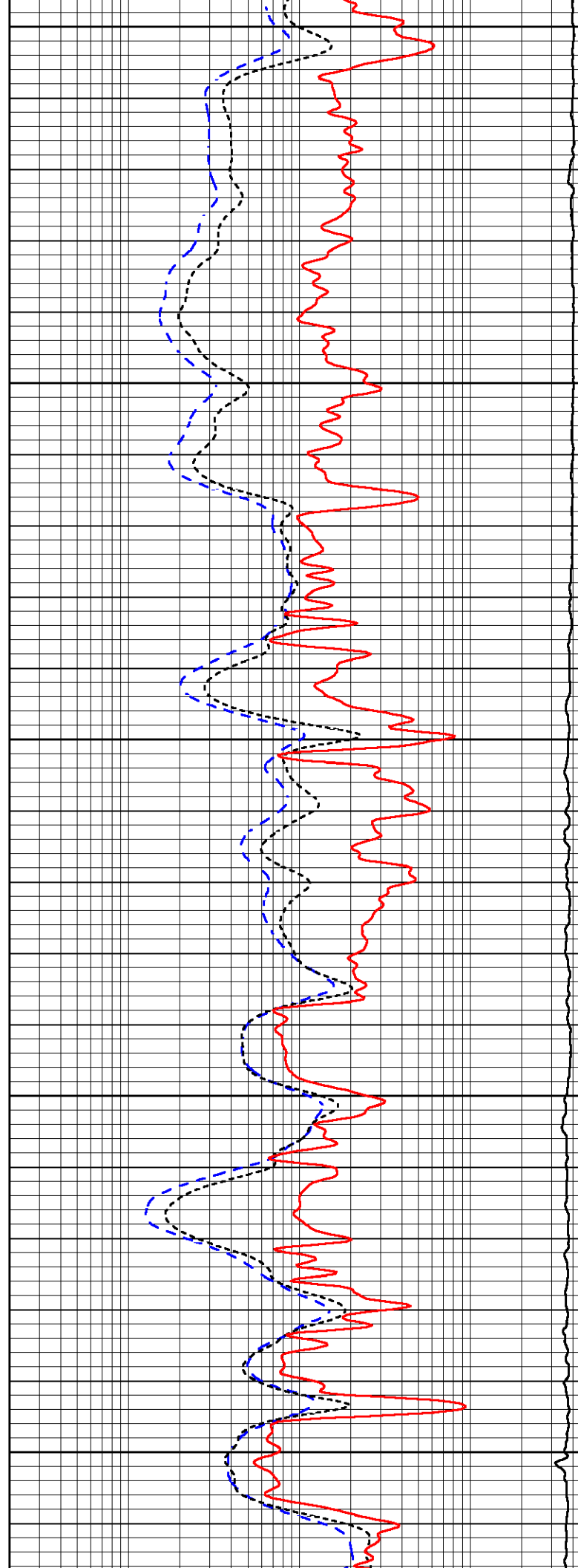
4150

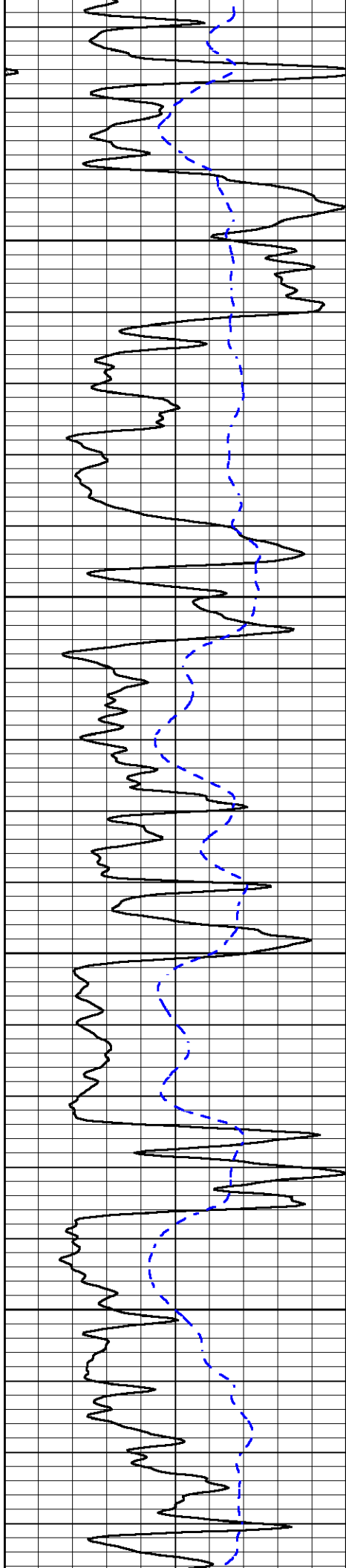
4200

4250

4300

4350



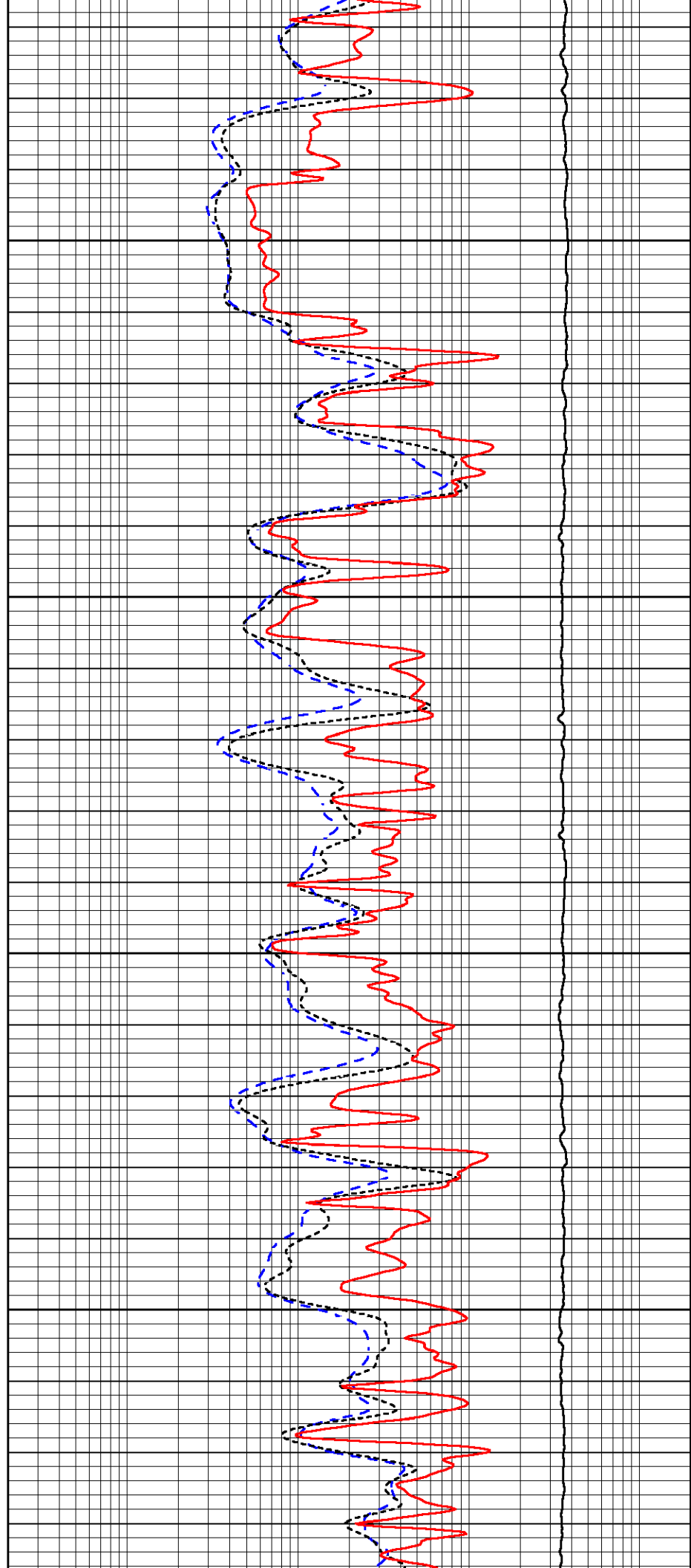


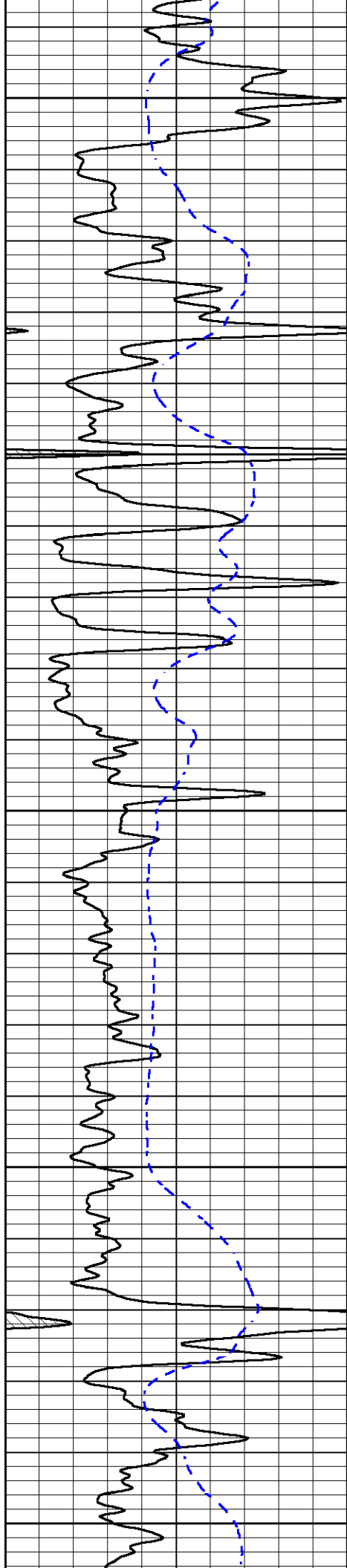
4400

4450

4500

4550





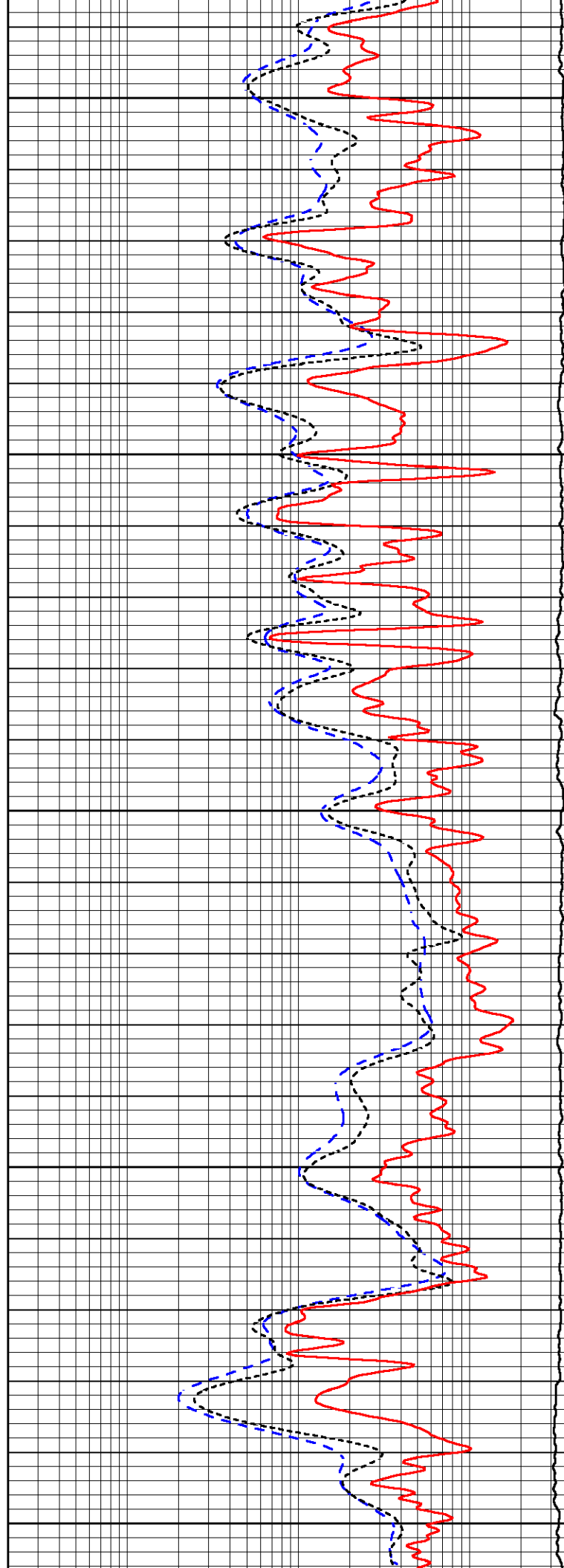
4600

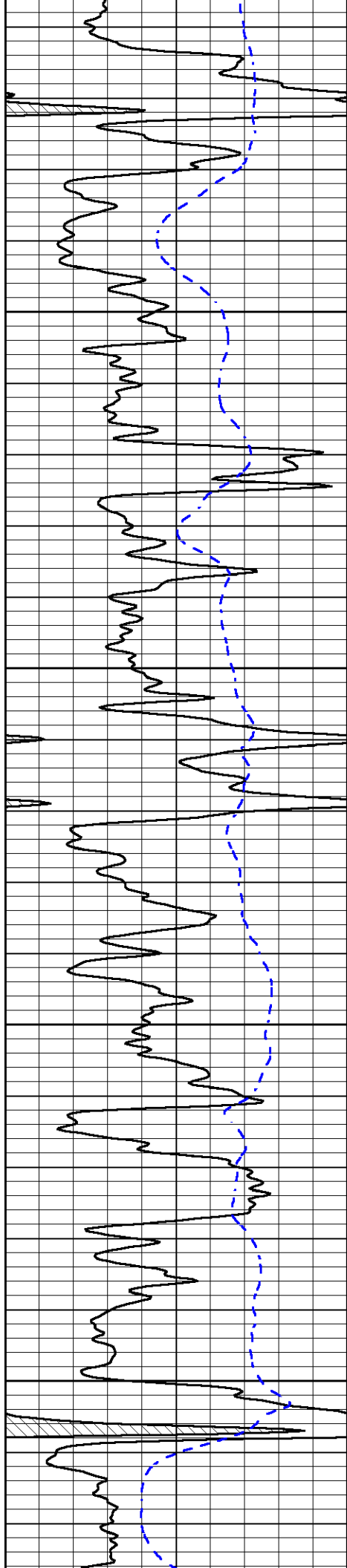
4650

4700

4750

4800



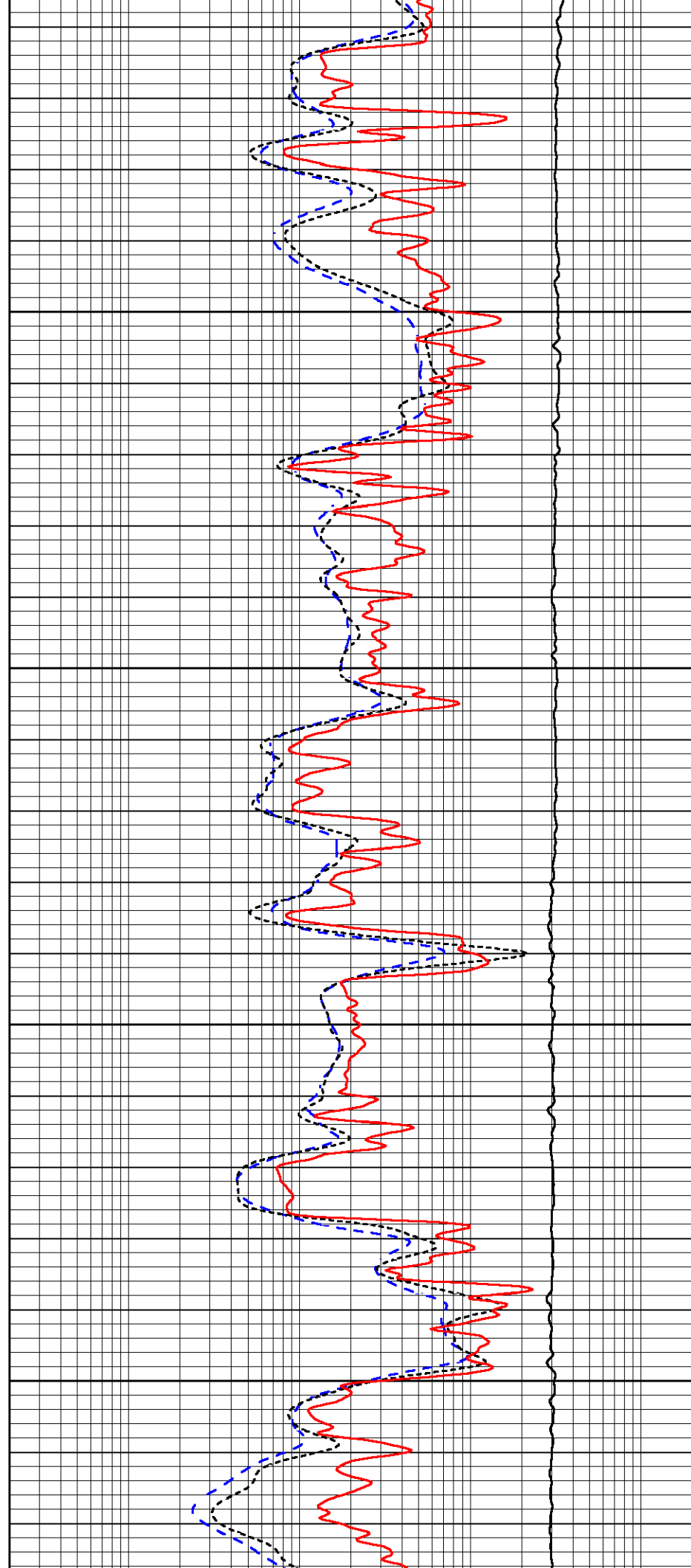


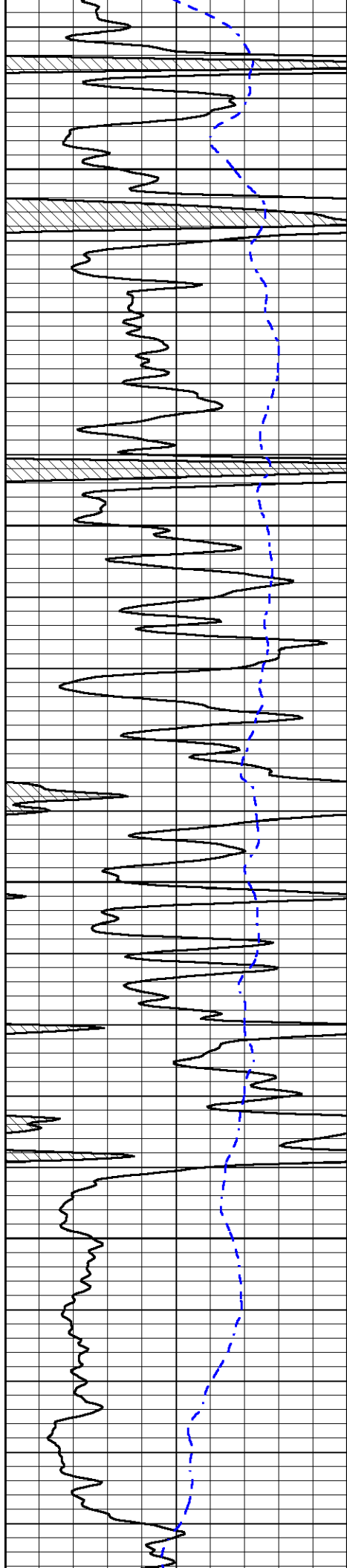
4850

4900

4950

5000



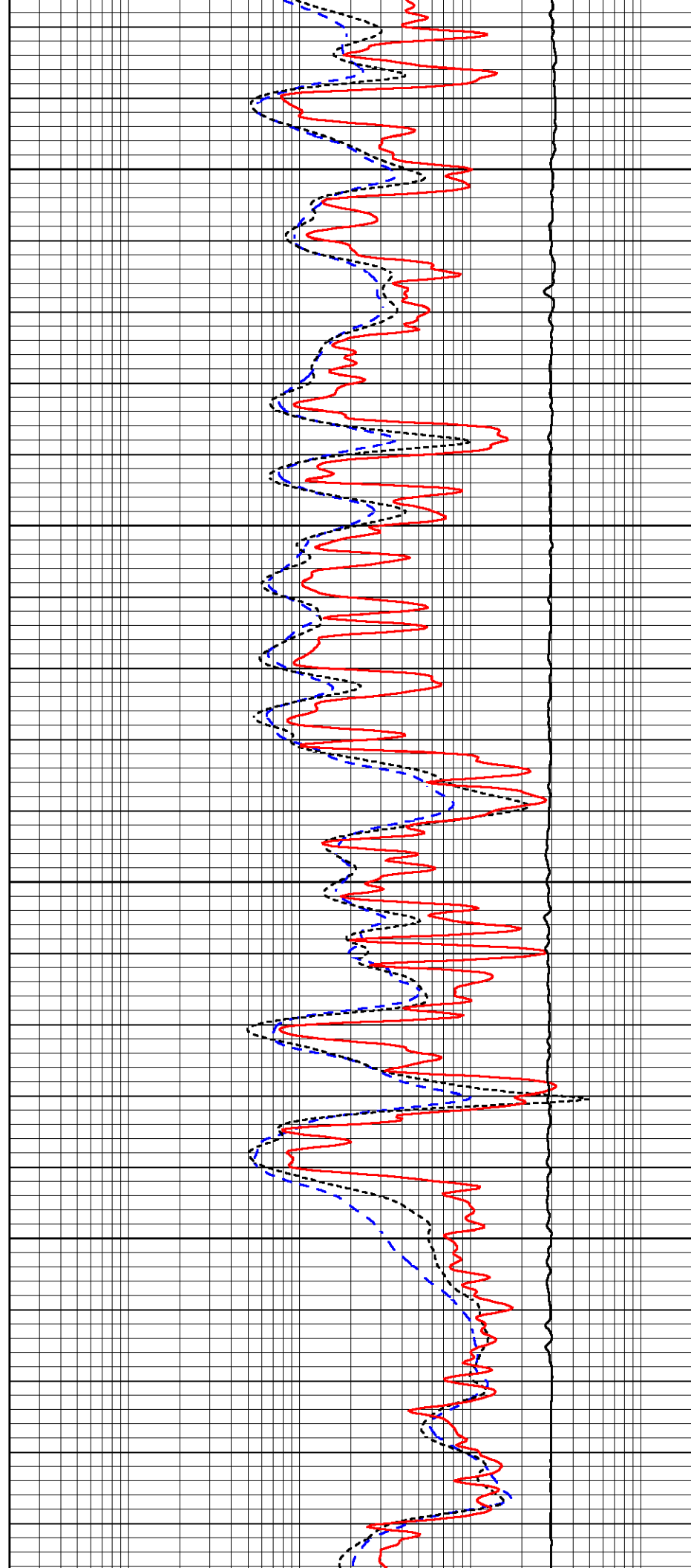


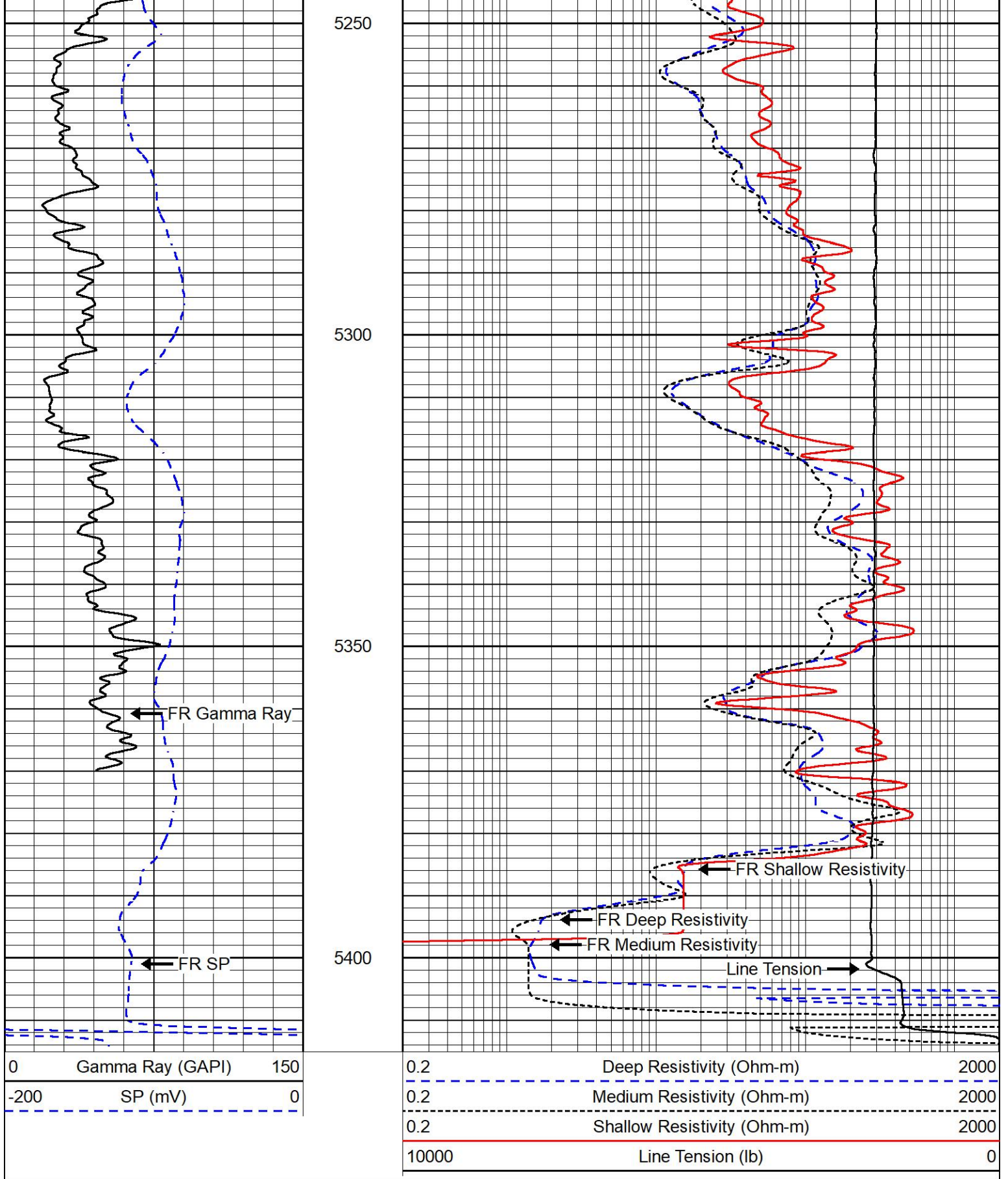
5050

5100

5150

5200



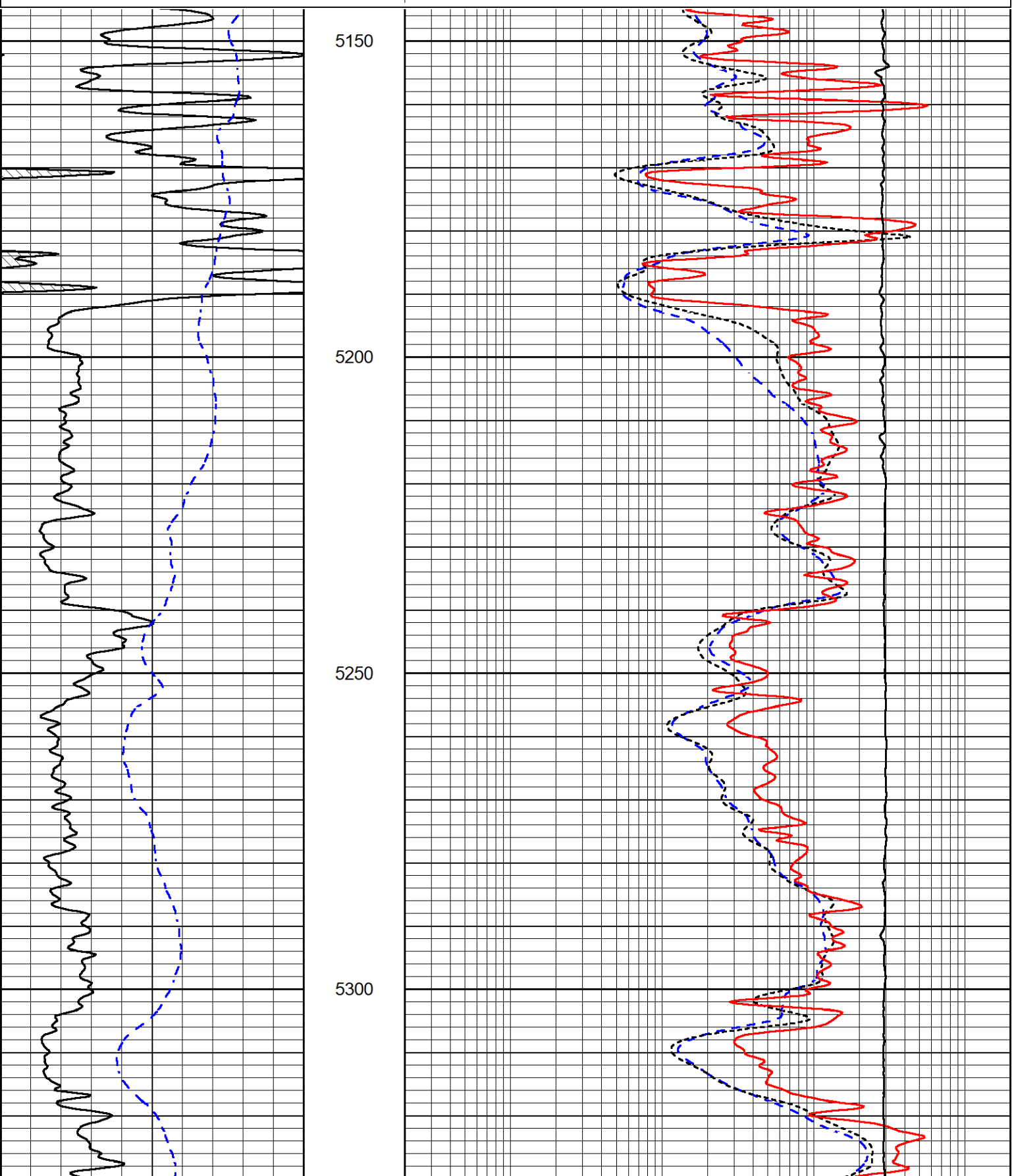


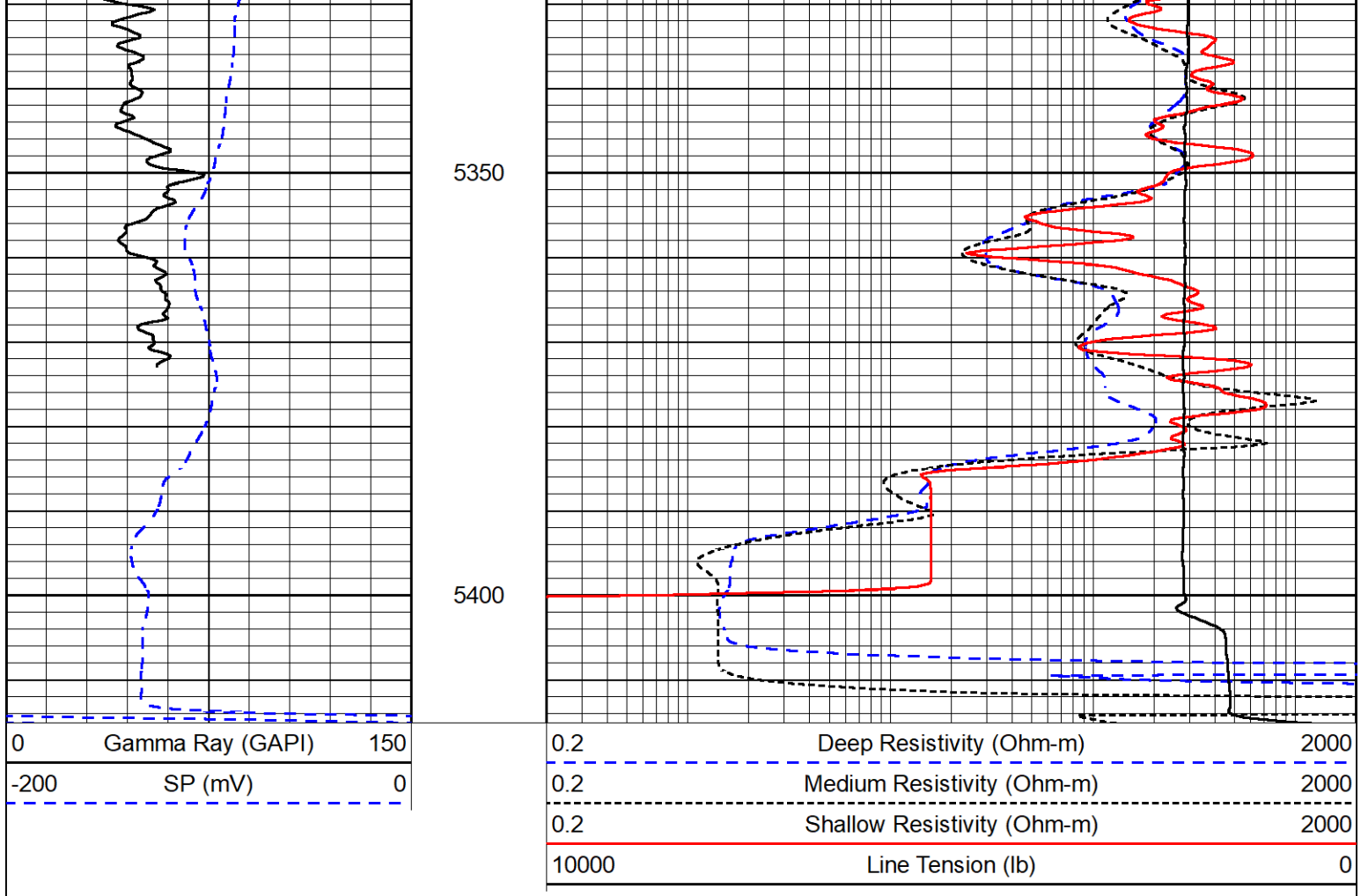
REPEAT SECTION

REPEAT PASS

0	Gamma Ray (GAPI)	150
-200	SP (mV)	0

0.2	Deep Resistivity (Ohm-m)	2000
0.2	Medium Resistivity (Ohm-m)	2000
0.2	Shallow Resistivity (Ohm-m)	2000
10000	Line Tension (lb)	0





Calibration Report

Database File carmen schmitt_heyen trust 1-27.db
 Dataset Pathname stkml/pass3.3
 Dataset Creation Tue Dec 14 23:11:57 2021

Dual Induction Calibration Report

Serial-Model: 501 HT-M&W
 Surface Cal Performed: Tue Dec 14 22:36:29 2021

Loop:	Readings		References		Results		
	Air	Loop	Air	Loop	m	b	
Deep	83.639	487.104	0.000	183.000	mmho/m	0.435	-34.000
Medium	113.335	1585.690	0.000	442.000	mmho/m	0.300	-33.500

Microlog Calibration Report

Serial-Model: 401-PSIML
 Performed: Wed Dec 1 16:06:14 2021

	Readings		References		Results		
	Zero	Cal	Zero	Cal	m	b	
Normal	0.0000	1.0000	0.0000	1.0000	Ohm-m	13500.0000	-0.5000
Inverse	0.0000	1.0000	0.0000	1.0000	Ohm-m	11000.0000	0.0000
Caliper	1.0052	1.0858	5.0000	16.5000	in	142.7190	-139.1000

Compensated Density Calibration Report

Serial-Model:	305-05-M&W
Source #:	20762B
Master Calibration Performed:	Mon Dec 13 15:18:29 2021

Master Calibration

	Density		Far Detector	Near Detector	
Magnesium	1.755	g/cc	8758.11	9709.36	cps
Aluminum	2.630	g/cc	1513.14	5652.54	cps
Spine Angle = 72.88			Density/Spine Ratio = 0.476		
	Size		Reading		
Small Ring	4.00	in	1.75		
Large Ring	14.00	in	1.38		

Compensated Neutron Calibration Report

Serial-Model:	207-MW-M&W
Source #:	100046B
Master Calibration Performed:	Mon Nov 29 15:06:24 2021

Master Calibration

Detector	Readings	Target	Normalization
Short Space	6240.00 cps	1000.00 cps	1.6025
Long Space	460.00 cps	1000.00 cps	1.9500

Gamma Ray Calibration Report

Serial Number:	101
Tool Model:	M&W
Performed:	Fri Dec 3 15:10:46 2021
Calibrator Value:	500.0 GAPI
Background Reading:	24.0 cps
Calibrator Reading:	637.0 cps
Sensitivity:	0.5500 GAPI/cps



Company	Carmen Schmitt, Inc.
Well	Heyen Trust #1-27
Field	
County	Ford
State	Kansas