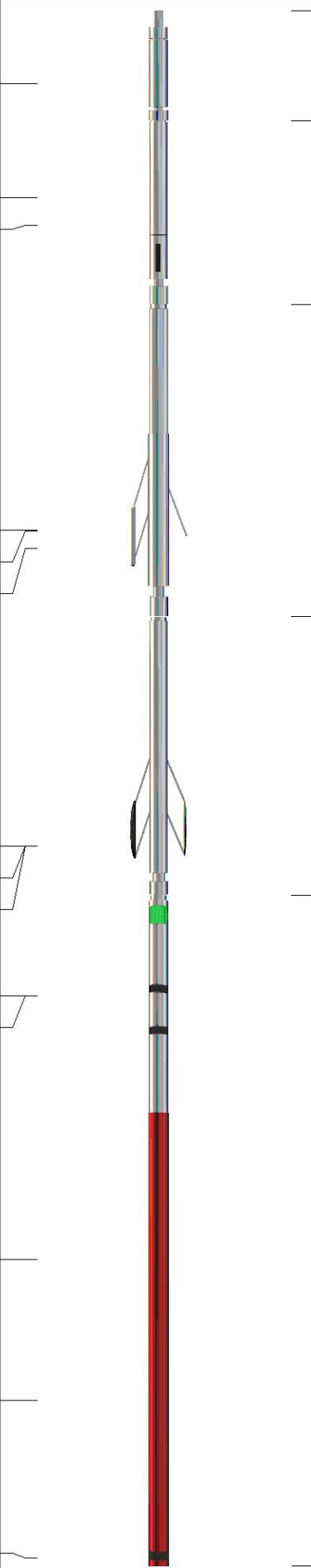


Sensor	Offset (ft)	Schematic	Description	Length (ft)	O.D. (in)	Weight (lb)
GR	40.33		GR-M&W (101)	3.00	3.50	50.00
CNLSC CNSSC	37.23 36.48		CNT-M&W (207-MW)	5.00	3.50	100.00
LSD DCAL SSD	28.18 28.17 27.68		CDL-M&W (305-05)	8.50	4.00	250.00
MCAL MI MN	19.58 19.58 19.58		ML-PSIML (401)	7.58	4.00	65.00
RLL3F RLL3	15.50 15.50					
CILD	8.33		DIL-M&W (501 HT)	18.25	3.50	220.00
CILM	4.50					
SP	0.20					

Dataset: carmen schmitt_heyen trust 1-27.db: field/well/stkml/pass3.3
 Total length: 42.33 ft
 Total weight: 685.00 lb
 O.D.: 4.00 in

Log Variables

DatabaseC:\ProgramData\Warrior\Data\carmen schmitt_heyen trust 1-27.db
 Dataset field/well/stkml/pass3.3/_vars_

Top - Bottom

A	BOREID in	BOTTEMP degF	CASEOD in	CASETHCK in	FLUIDDEN g/cc	M	MATRXDEN g/cc
1	7.875	130	5.5	0	1	2	2.71
NPORSEL	PERFS	SNDERR mmho/m	SNDERRM mmho/m	SPSHIFT mV	SRFTEMP degF	SZCOR	TDEPTH ft
Limestone	0	0	0	270	50	Off	5402

Variable Description

A : Cement Factor (a)
 BOREID : Borehole I.D.
 BOTTEMP : Bottom Hole Temperature
 CASEOD : Casing O.D.
 CASETHCK : Casing Thickness
 FLUIDDEN : Fluid Density
 M : Cement Exp (m)
 MATRXDEN : Matrix Density

NPORSEL : Neutron Porosity Curve Select
 PERFS : Perforation Flag
 SNDERR : Deep Sonde Error Correction
 SNDERRM : Medium Sonde Error Correction
 SPSHIFT : S.P. Baseline Offset
 SRFTEMP : Surface Temperature
 SZCOR : CN Size Cor. ?
 TDEPTH : Total Depth

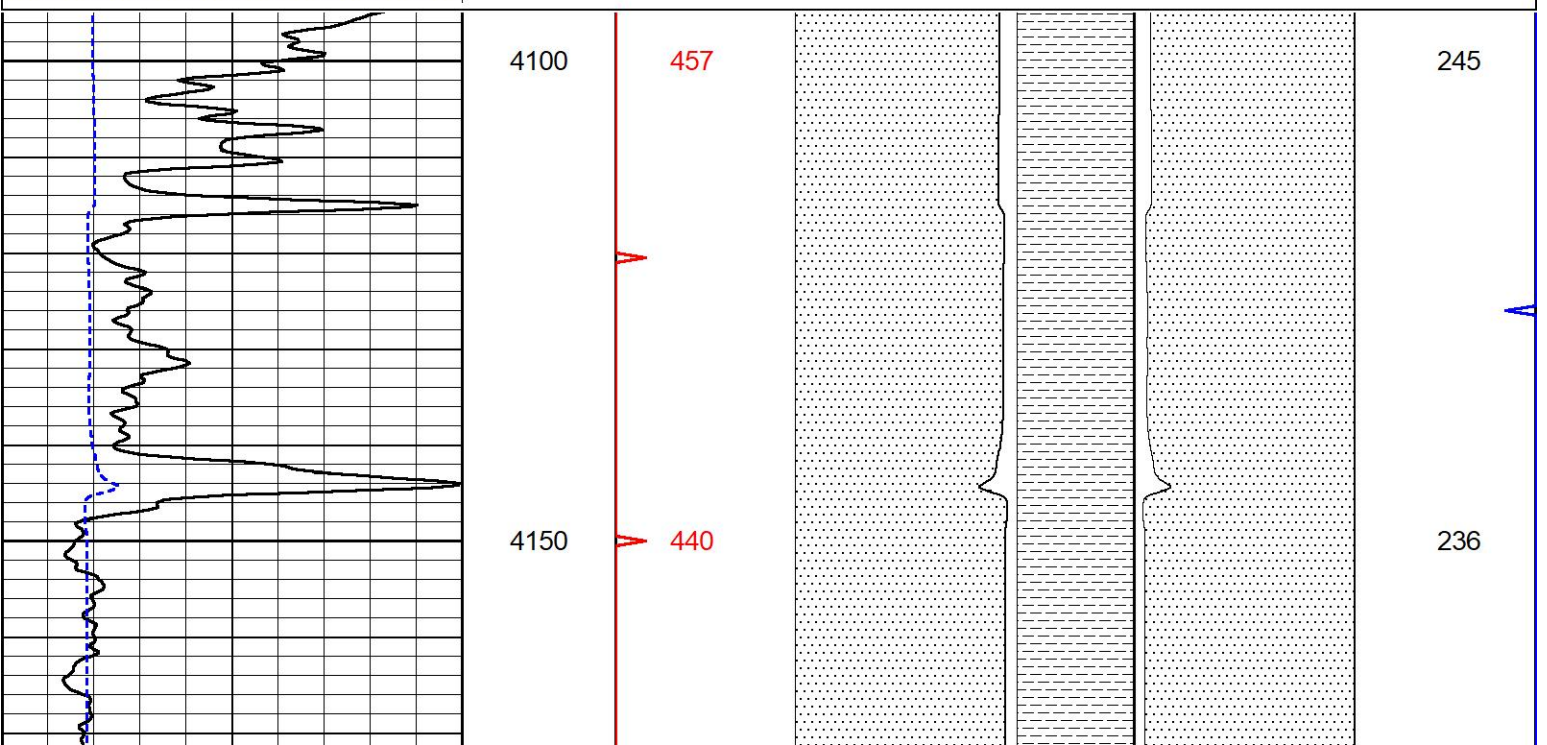


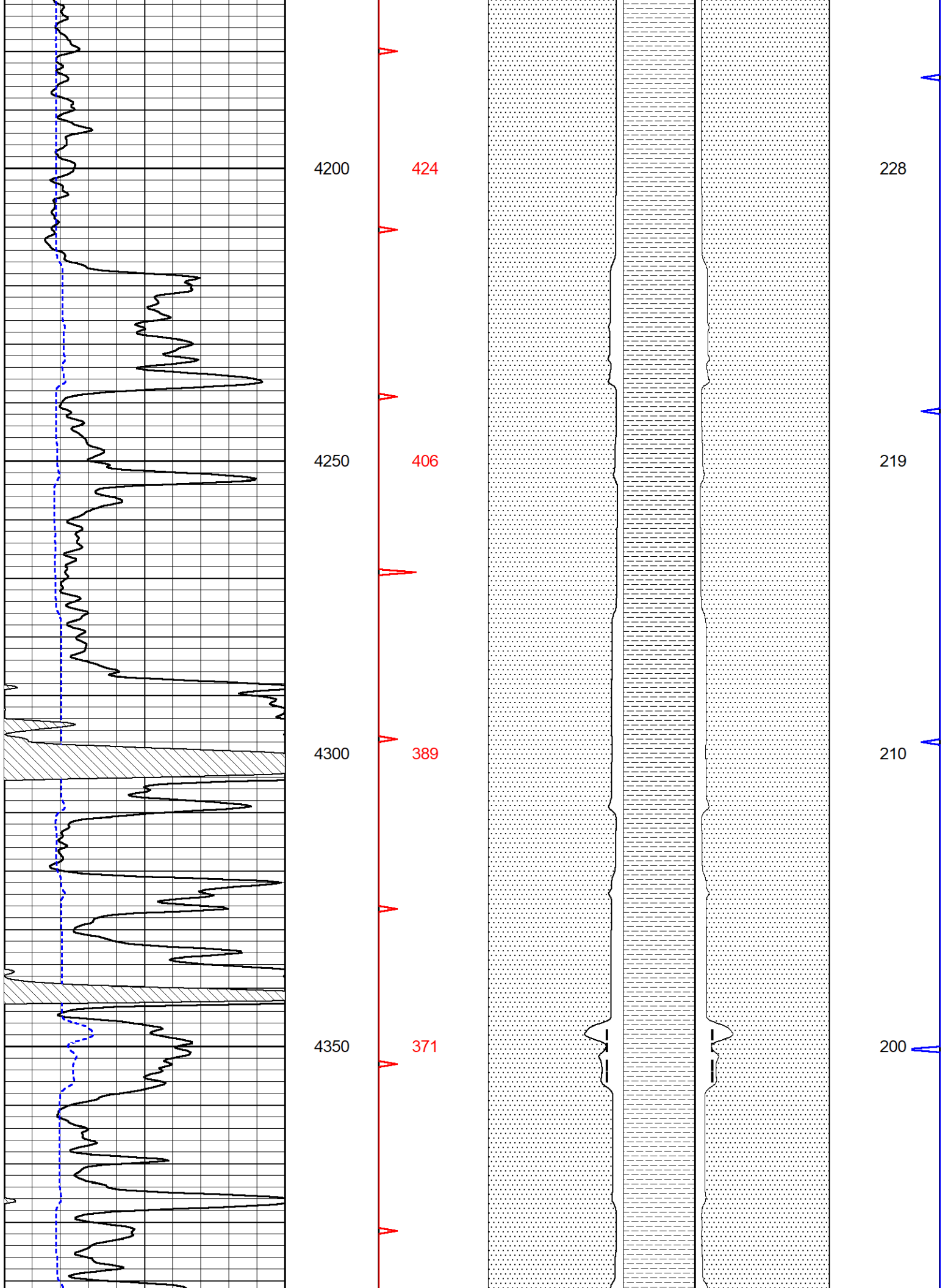
DETAIL SECTION

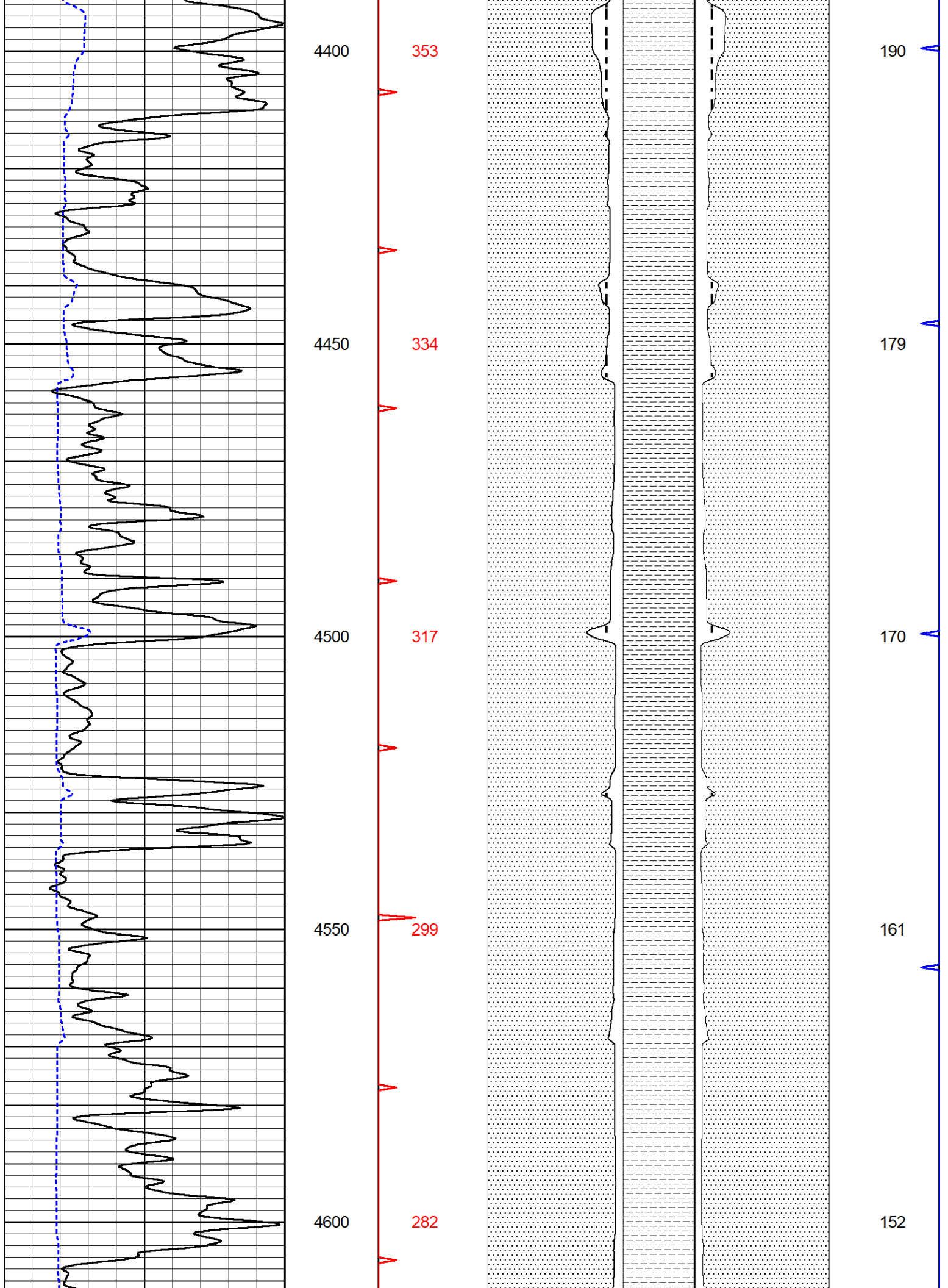
MAIN PASS

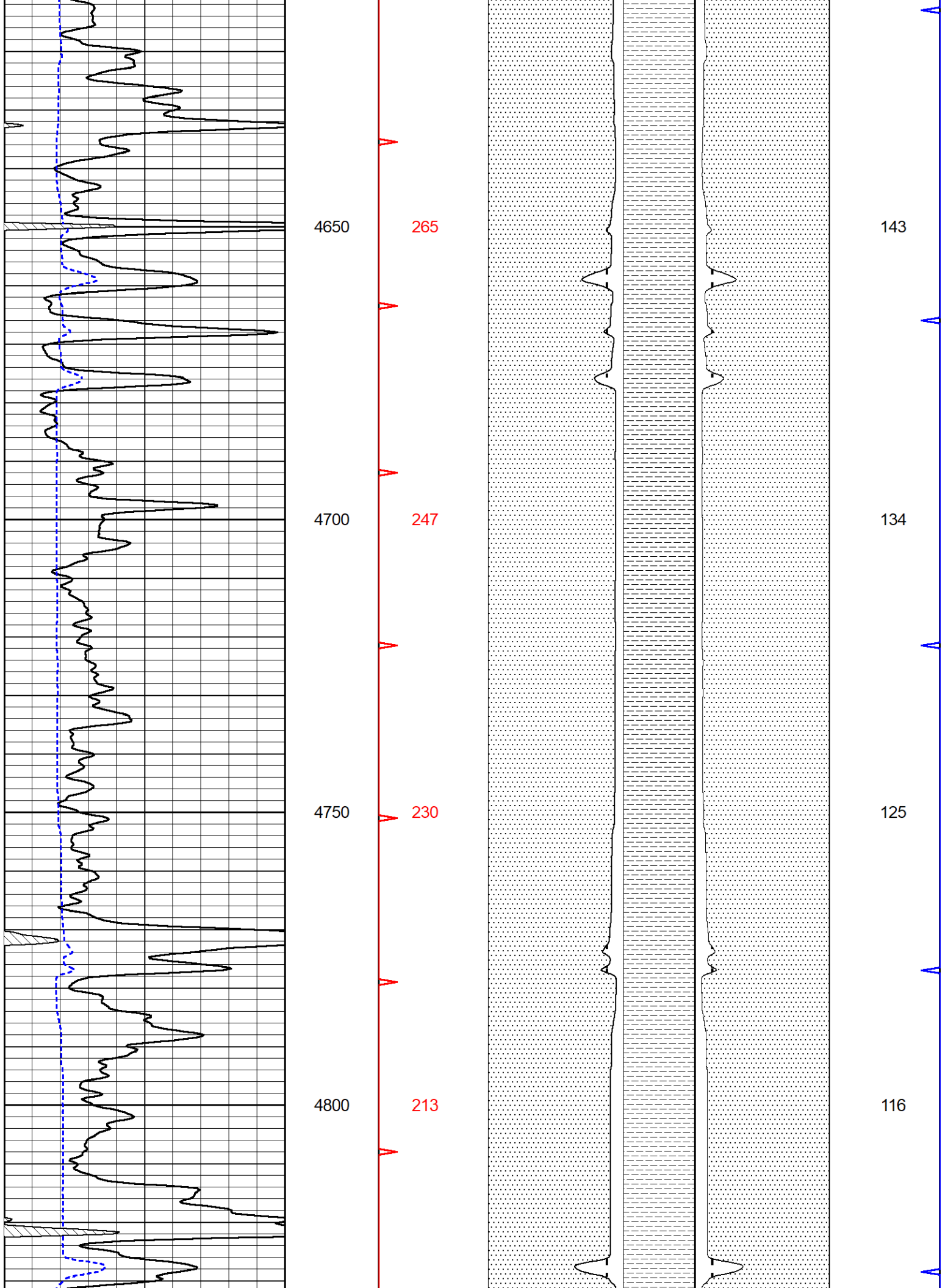
Database File carmen schmitt_heyen trust 1-27.db
 Dataset Pathname stkml/pass3.1
 Presentation Format bhv5half
 Dataset Creation Wed Dec 15 00:06:46 2021
 Charted by Depth in Feet scaled 1:240

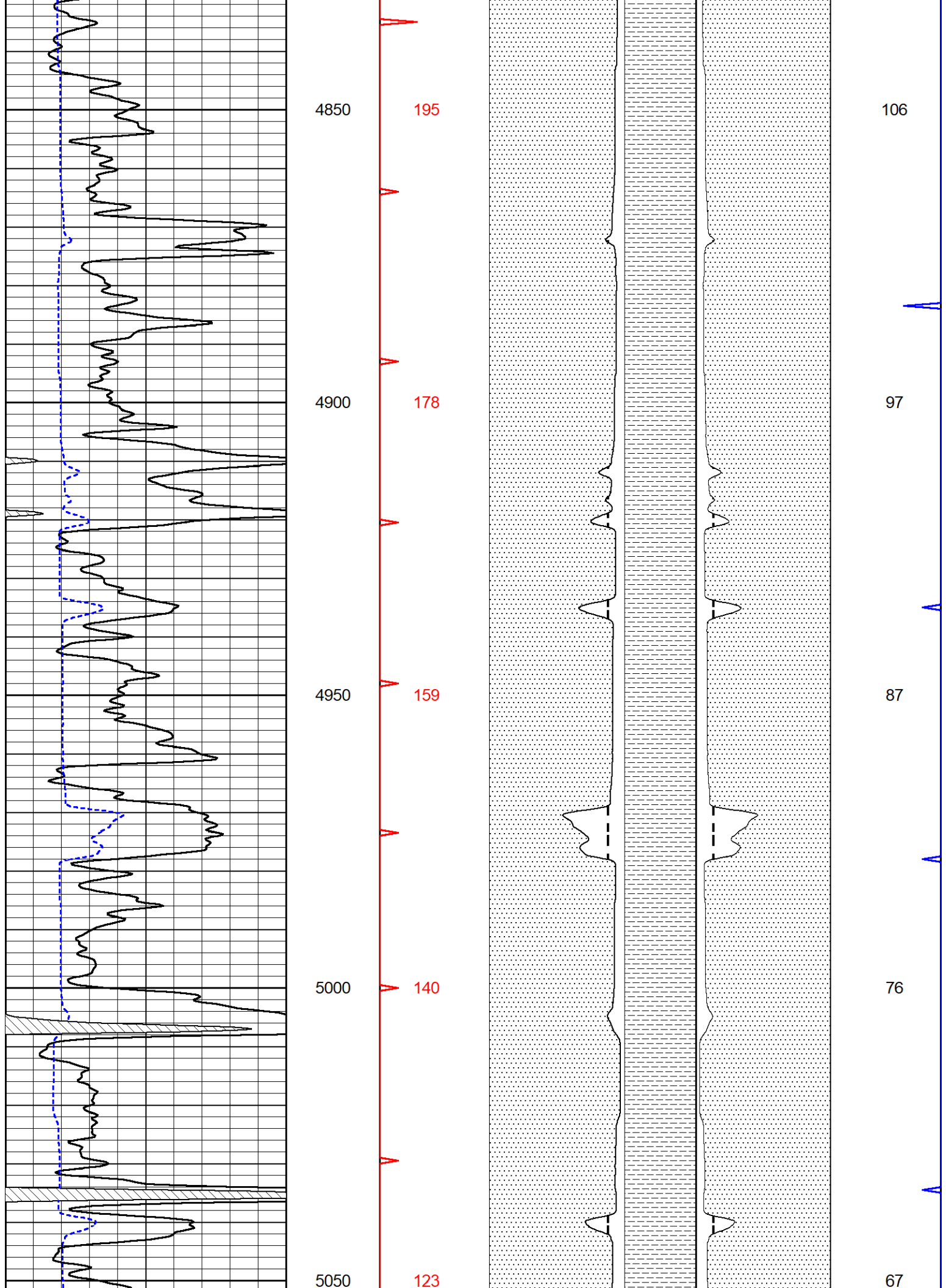
0	Gamma Ray (GAPI)	150	0	Borehole Volume (ft3)	15	15	Annular Volume (ft3)	0
150	GR (GAPI)	300						
6	DCAL (in)	16						

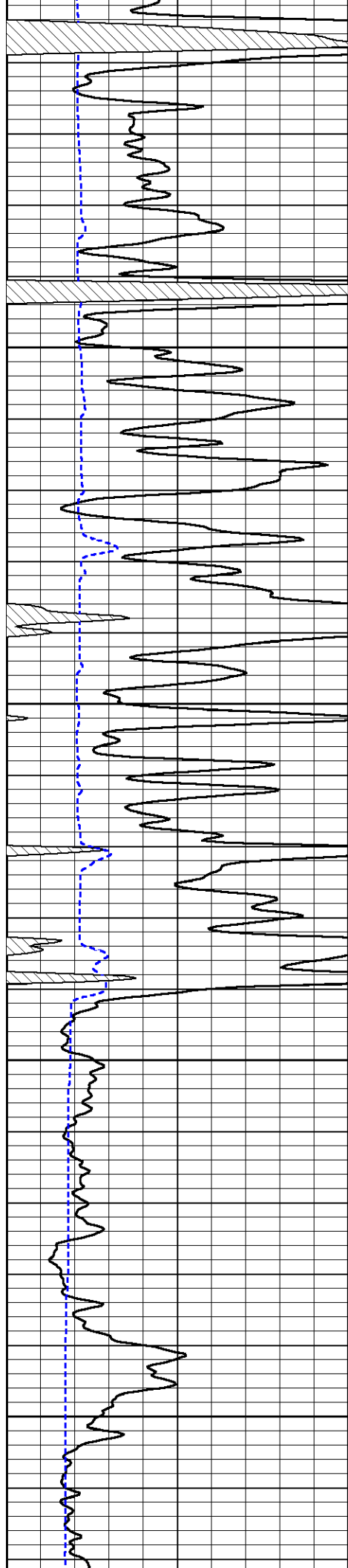












5100

105

57

5150

86

47

5200

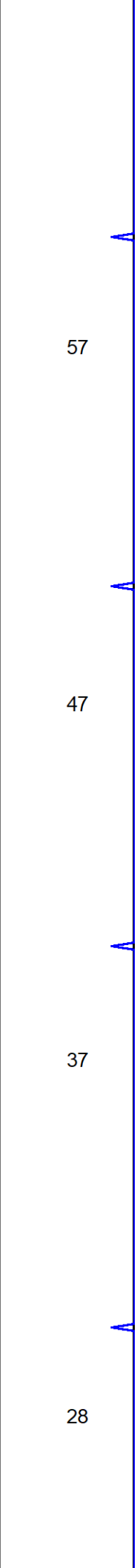
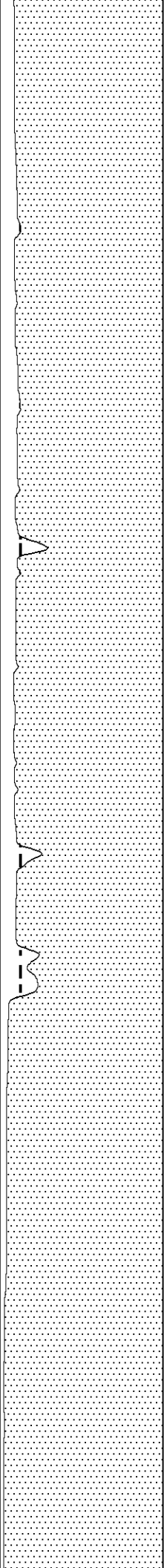
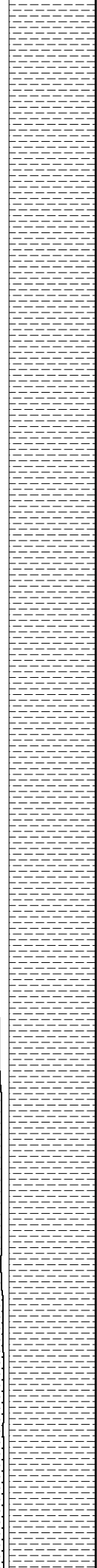
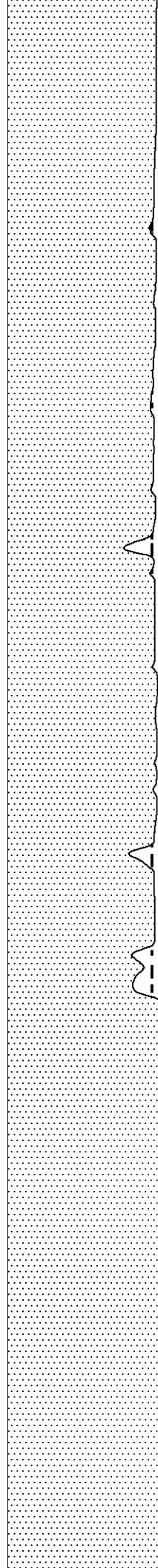
68

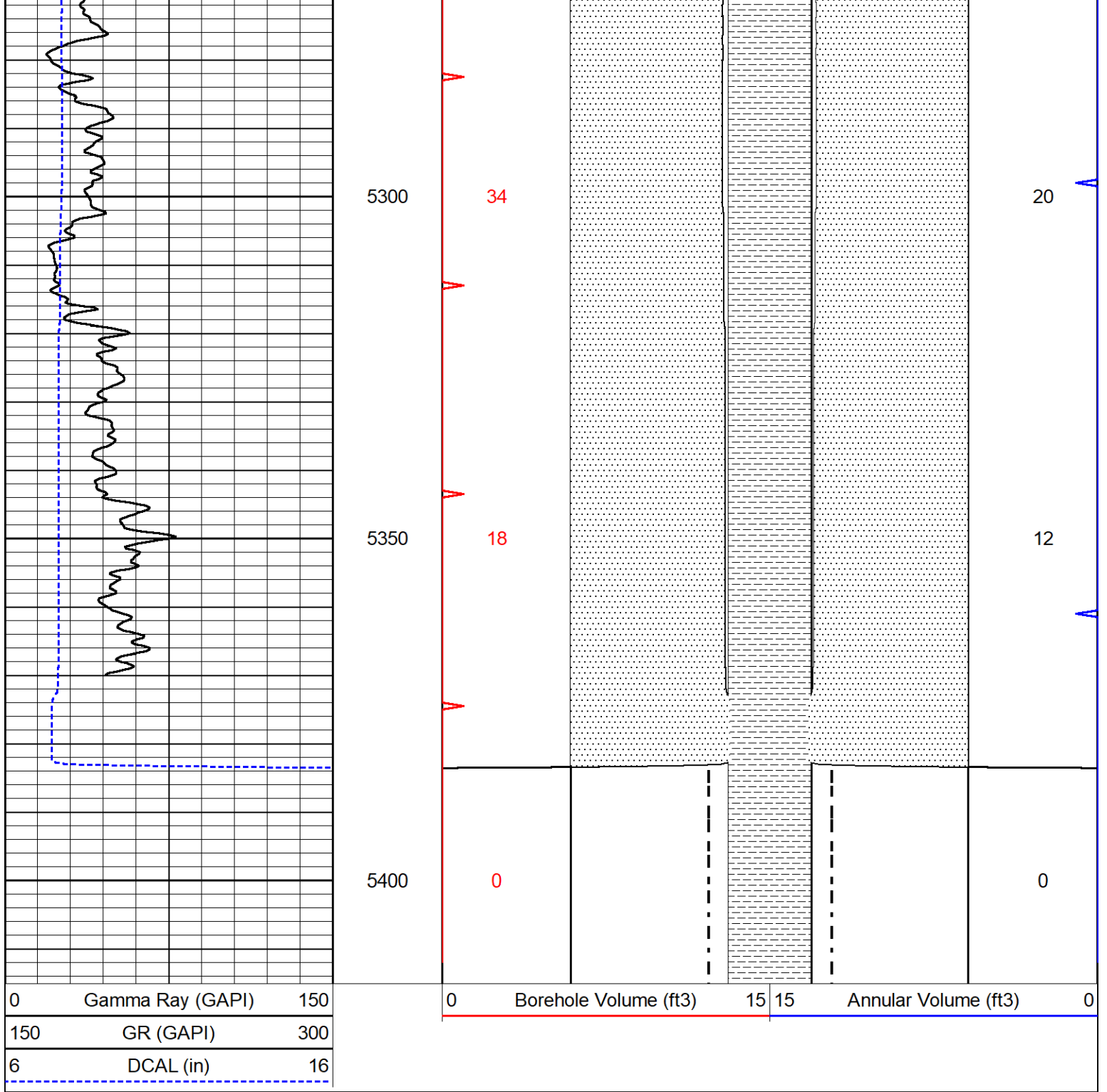
37

5250

51

28





Calibration Report

Database File carmen schmitt_heyen trust 1-27.db
 Dataset Pathname stkml/pass3.3
 Dataset Creation Tue Dec 14 23:11:57 2021

Dual Induction Calibration Report

Serial-Model: 501 HT-M&W
 Surface Cal Performed: Tue Dec 14 22:36:29 2021

Loop:	Readings		References		Results		
	Air	Loop	Air	Loop	m	b	
Deep	83.639	487.104	0.000	183.000	mmho/m	0.435	-34.000
Medium	113.335	1585.690	0.000	442.000	mmho/m	0.300	33.500

Microlog Calibration Report

Serial-Model: 401-PSIML
 Performed: Wed Dec 1 16:06:14 2021

	Readings		References			Results	
	Zero	Cal	Zero	Cal		m	b
Normal	0.0000	1.0000	0.0000	1.0000	Ohm-m	13500.0000	-0.5000
Inverse	0.0000	1.0000	0.0000	1.0000	Ohm-m	11000.0000	0.0000
Caliper	1.0052	1.0858	5.0000	16.5000	in	142.7190	-139.1000

Compensated Density Calibration Report

Serial-Model: 305-05-M&W
 Source #: 20762B
 Master Calibration Performed: Mon Dec 13 15:18:29 2021

Master Calibration

	Density		Far Detector	Near Detector	
Magnesium	1.755	g/cc	8758.11	9709.36	cps
Aluminum	2.630	g/cc	1513.14	5652.54	cps
Spine Angle = 72.88		Density/Spine Ratio = 0.476			
	Size		Reading		
Small Ring	4.00	in	1.75		
Large Ring	14.00	in	1.38		

Compensated Neutron Calibration Report

Serial-Model: 207-MW-M&W
 Source #: 100046B
 Master Calibration Performed: Mon Nov 29 15:06:24 2021

Master Calibration

Detector	Readings	Target	Normalization
Short Space	6240.00 cps	1000.00 cps	1.6025
Long Space	460.00 cps	1000.00 cps	1.9500

Gamma Ray Calibration Report

Serial Number: 101
 Tool Model: M&W
 Performed: Fri Dec 3 15:10:46 2021

Calibrator Value: 500.0 GAPI

Background Reading: 24.0 cps
 Calibrator Reading: 637.0 cps

Sensitivity: 0.5500 GAPI/cps



Company	Samuel Dennis, Inc.
Well	Heyen Trust #1-27
Field	
County	Ford
State	Kansas