

Company PALOMINO PETROLEUM, INC.  
Well BILLY BOB #2  
Field KRW  
County GOVE  
State KANSAS

Location: API # : 15-063-22389-00-00  
1739' FNL & 1549' FWL  
SW - NW - SE - NW  
SEC 12 TWP 15S RGE 26W  
Permanent Datum GROUND LEVEL Elevation 2359'  
Log Measured From KELLY BUSHING 7 A.G.L.  
Drilling Measured From KELLY BUSHING  
Elevation  
K.B. 2366'  
D.F. 2364'  
G.L. 2359'

Date	JAN 14, 2022	
Run Number	ONE	
Depth Driller	4385'	
Depth Logger	4326'	
Bottom Logged Interval	4325' 1924'	
Top Log Interval	2600' 150'	
Open Hole Size	///	
Type Fluid	WATER	
Density / Viscosity	///	
Max. Recorded Temp.	119F	
Estimated Cement Top	2730'	
Time Well Ready	///	
Time Logger on Bottom	///	
Equipment Number	PT-09	
Location	HAYS	
Recorded By	BOB KLAUS	
Witnessed By	JOE RUPP	

Borehole Record		Tubing Record					
Run Number	Bit	From	To	Size	Weight	From	To
ONE	12.25"	0	210'	210'			
TWO	7.875"	210'	4385'				

Casing Record		Surface String		Prot. String		Production String	
Record	Size	Wgt/Ft	Top	Bottom	Record	Size	Wgt/Ft
Surface String	8 5/8"		0	210'			
Production String	5 1/2"	14#	0	4380'			

<<< Fold Here >>>

All interpretations are opinions based on inferences from electrical or other measurements and we cannot and do not guarantee the accuracy or correctness of any interpretation, and we shall not, except in the case of gross or willful negligence on our part, be liable or responsible for any loss, costs, damages, or expenses incurred or sustained by anyone resulting from any interpretation made by any of our officers, agents or employees. These interpretations are also subject to our general terms and conditions set out in our current Price Schedule.

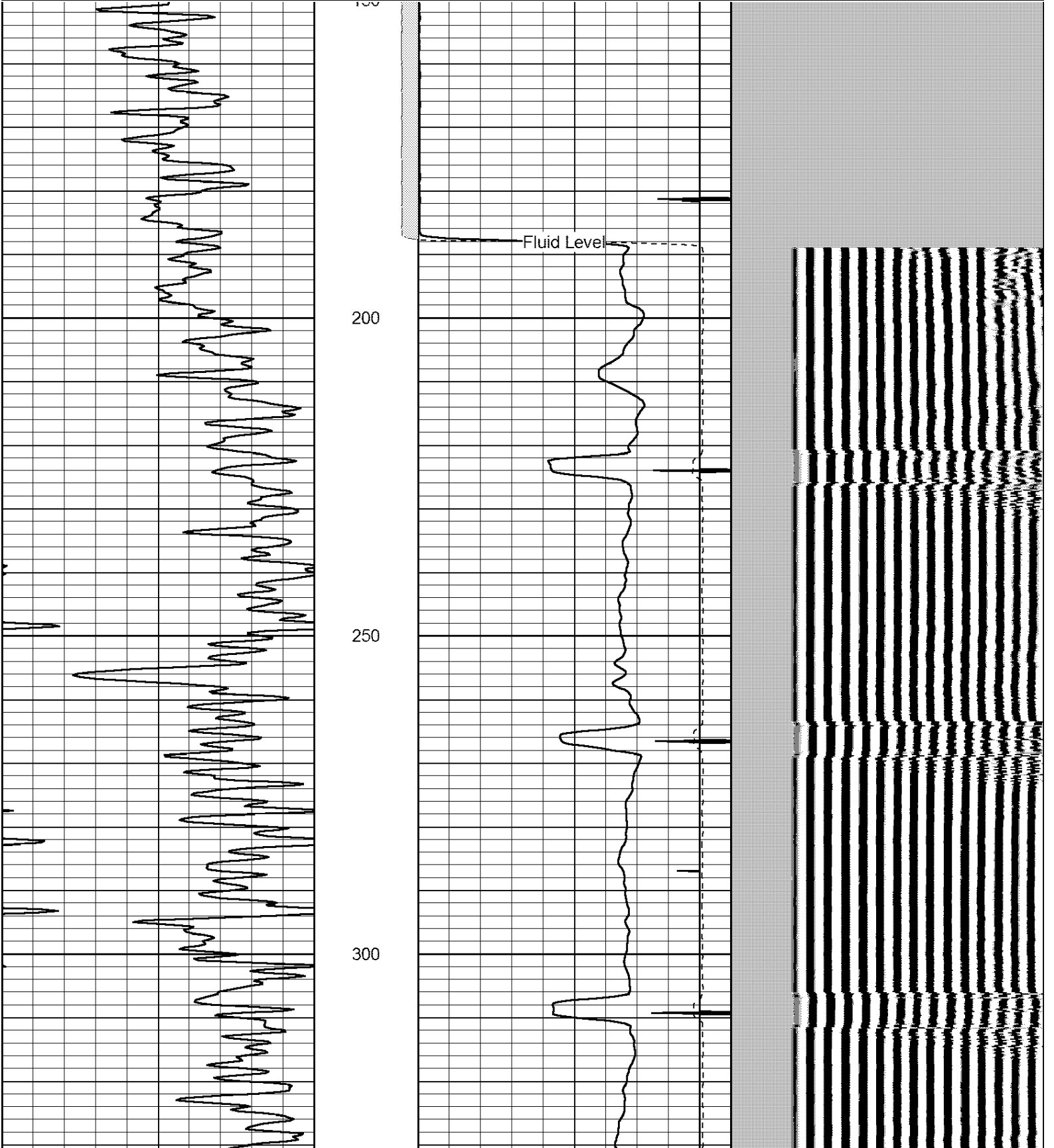
Comments

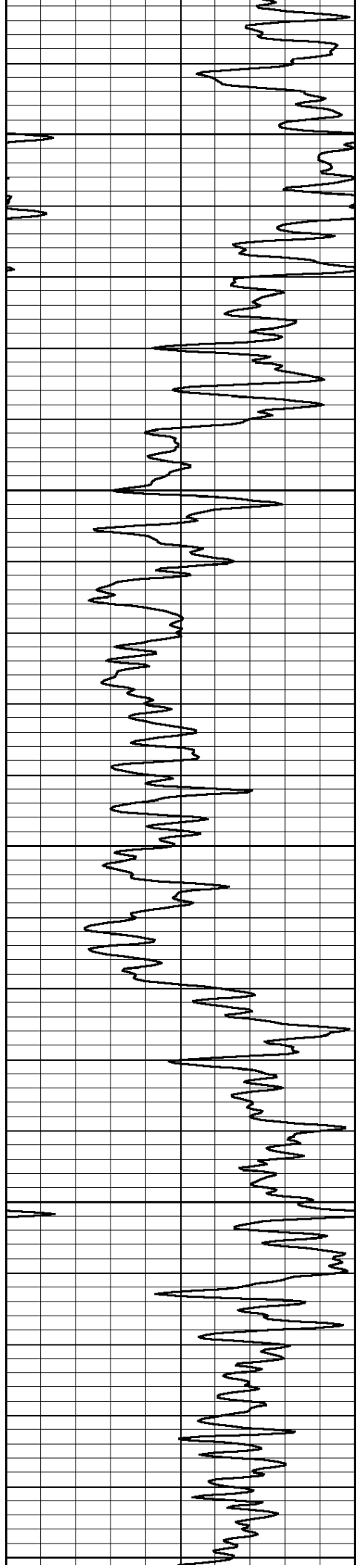
THANK YOU FOR USING  
PERF-TECH WIRELINE SERVICES, INC.  
785-628-3969

DIRECTIONS: UTICA, Ks.  
VET CLINIC, 9 NORTH to GOVE Rd. F,  
7/8 WEST, SOUTH into

Database File: jan142209.db  
 Dataset Pathname: pass4  
 Presentation Format: 3x5  
 Dataset Creation: Fri Jan 14 08:58:25 2022 by Log Std Casedhole 06040  
 Charted by: Depth in Feet scaled 1:240

0	Gamma Ray (GAPI)	150	0	3' AMPLITUDE (mV)	100	200	5' Variable Density	1100
			475	3' TRAVEL TIME (usec)	235			
			9	Collar Locator	-1			





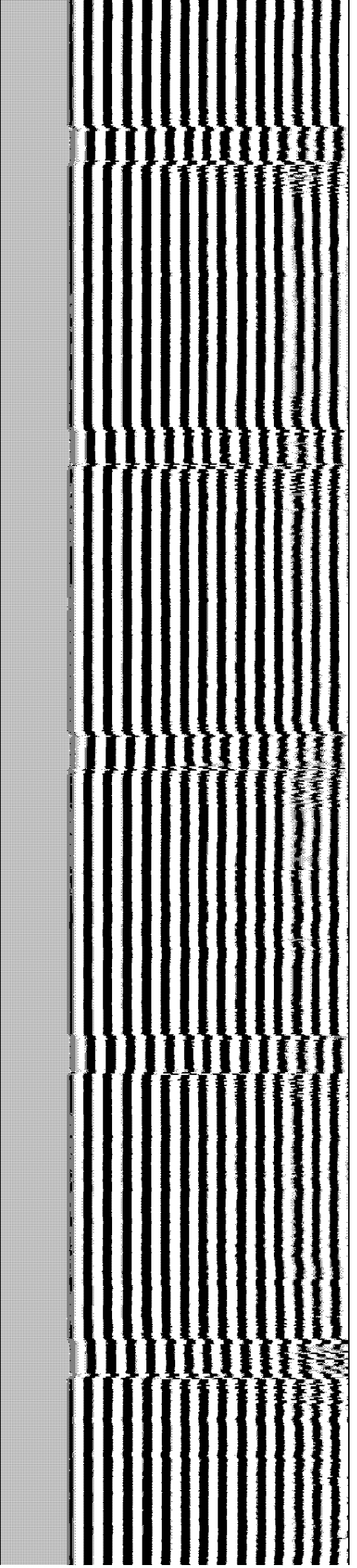
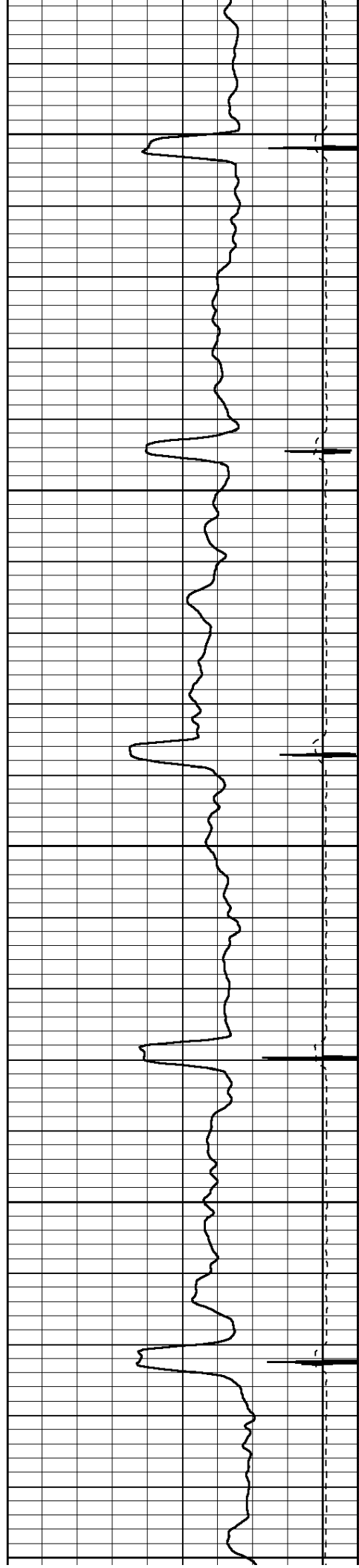
350

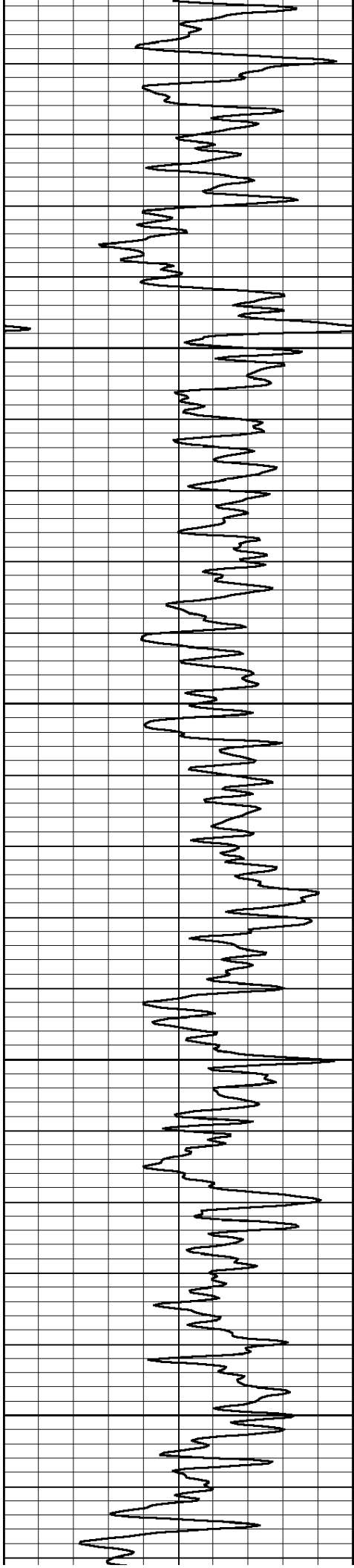
400

450

500

550



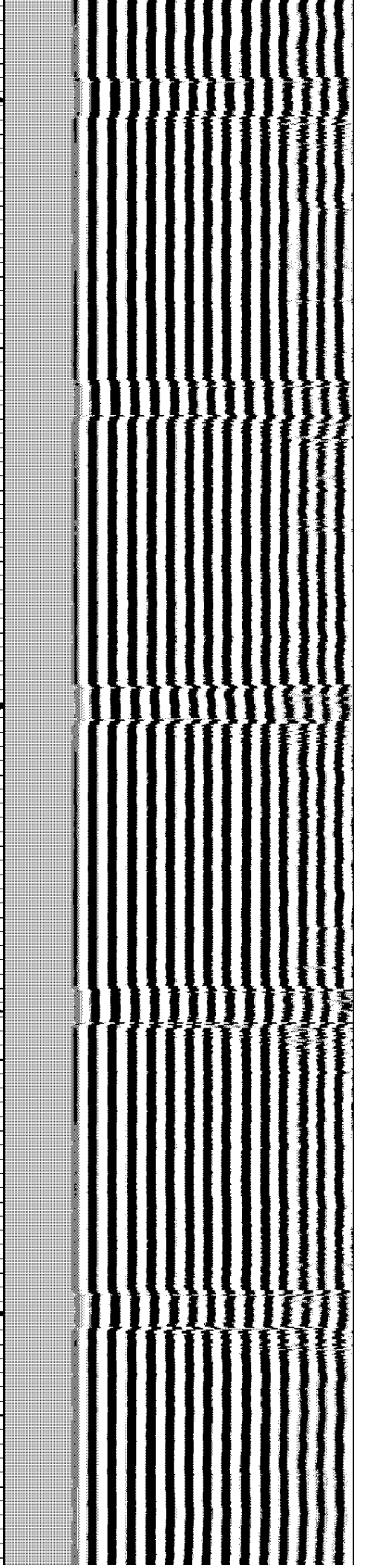
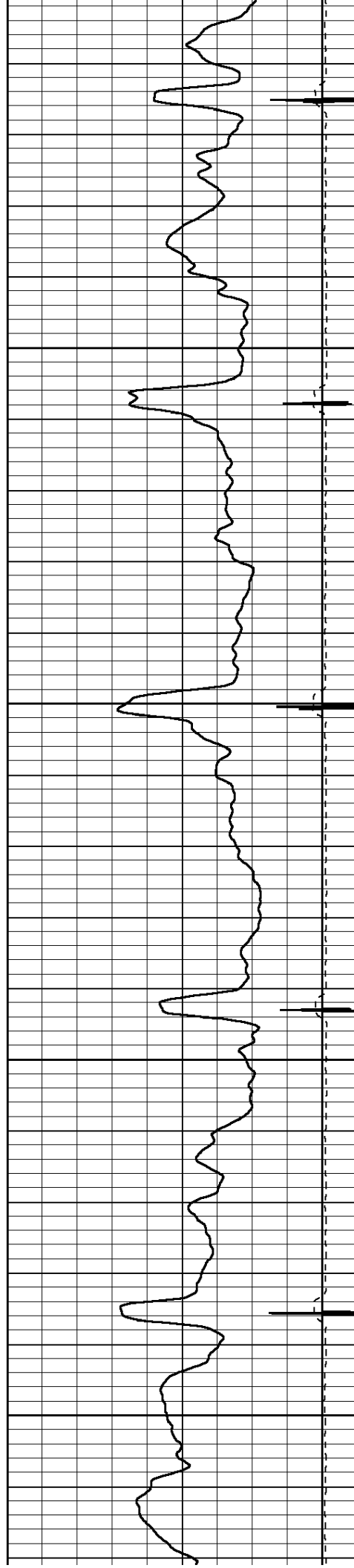


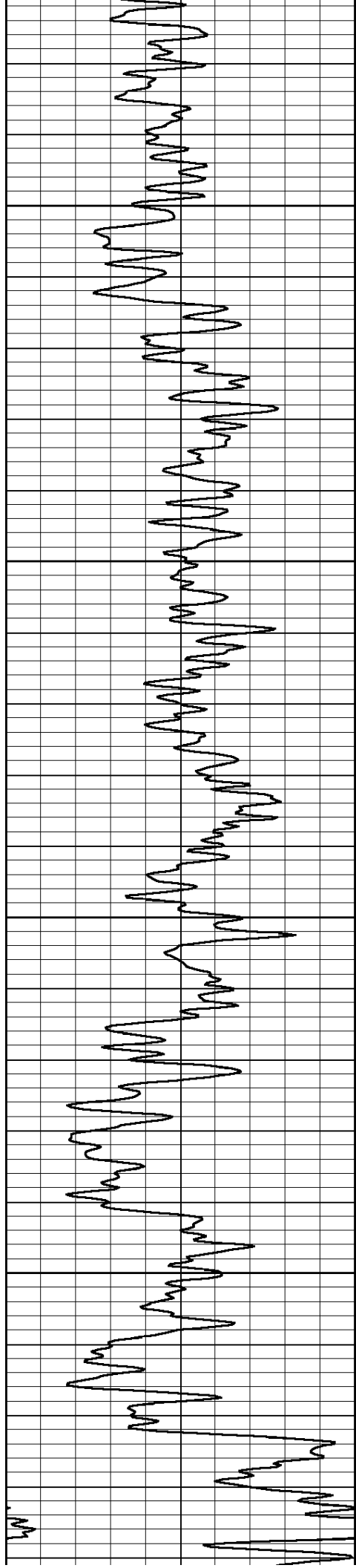
600

650

700

750



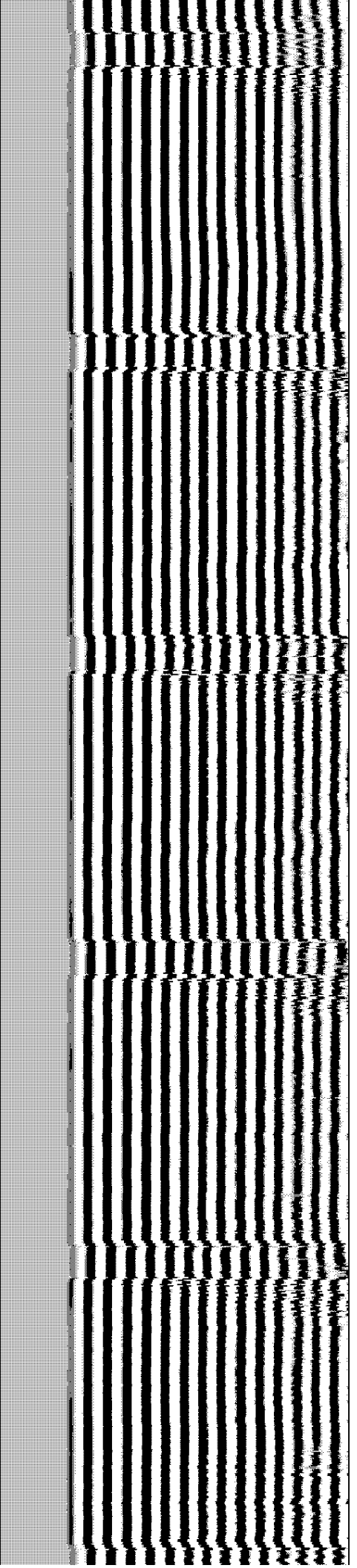
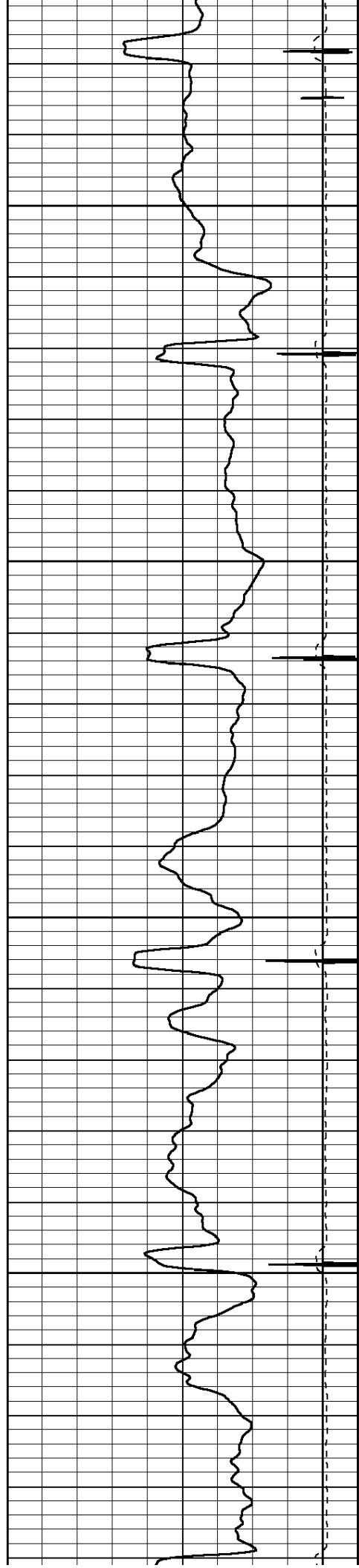


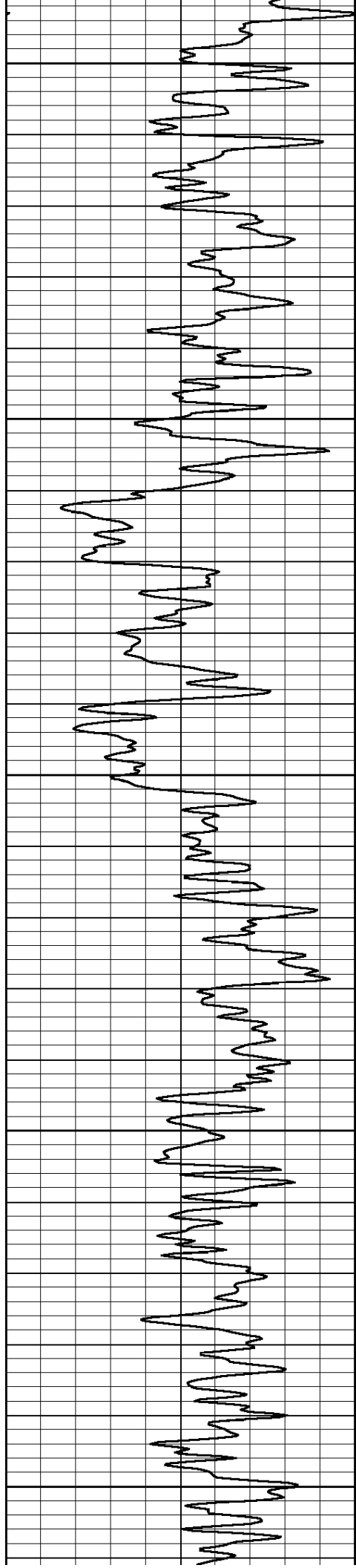
800

850

900

950





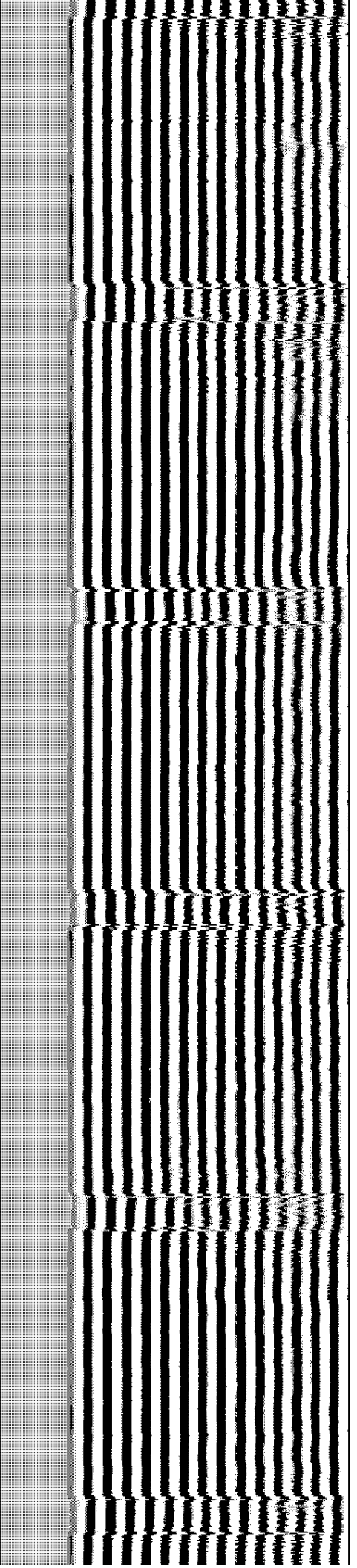
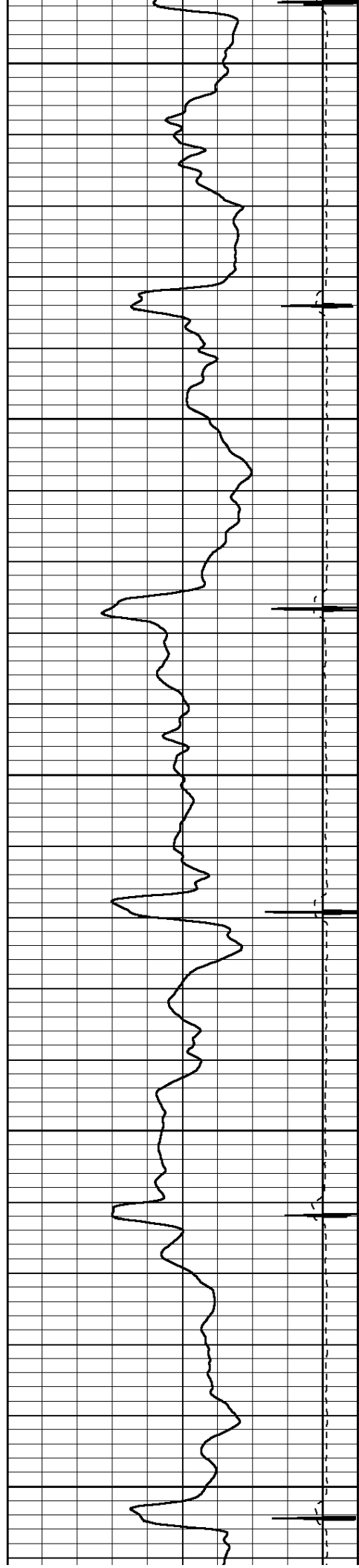
1000

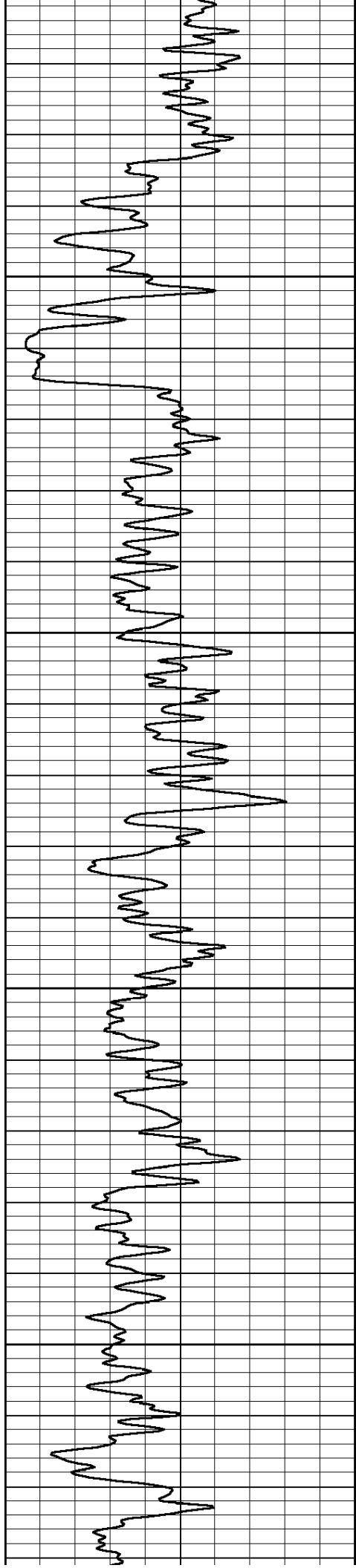
1050

1100

1150

1200



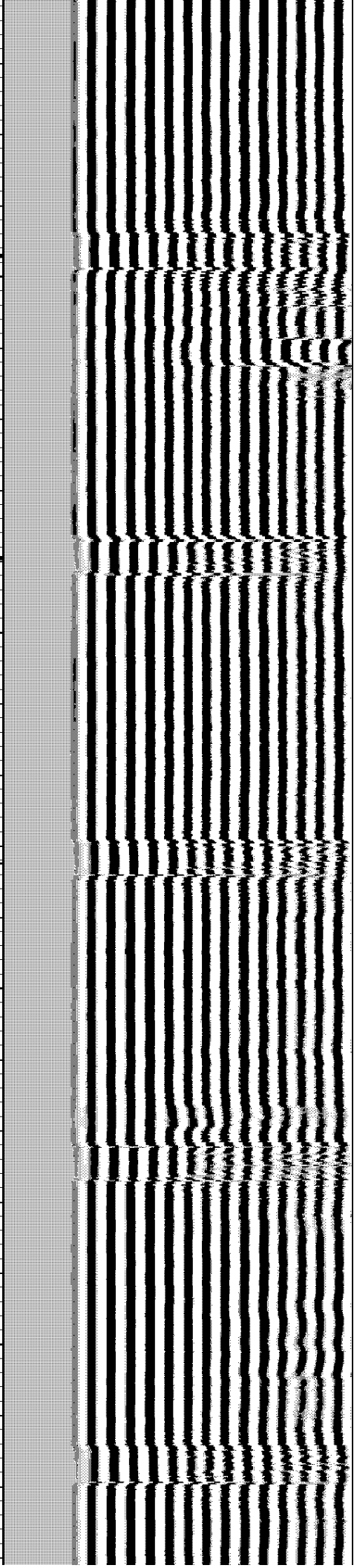
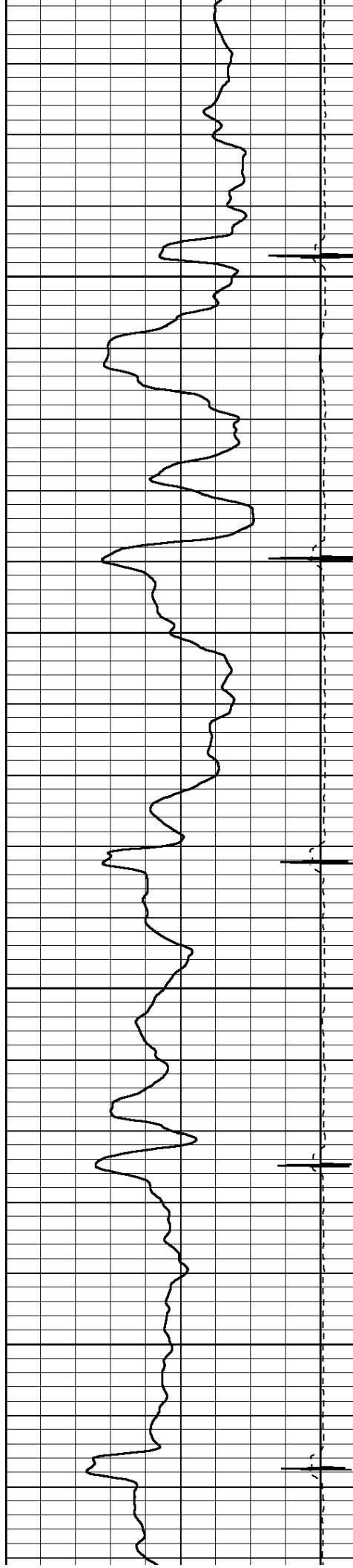


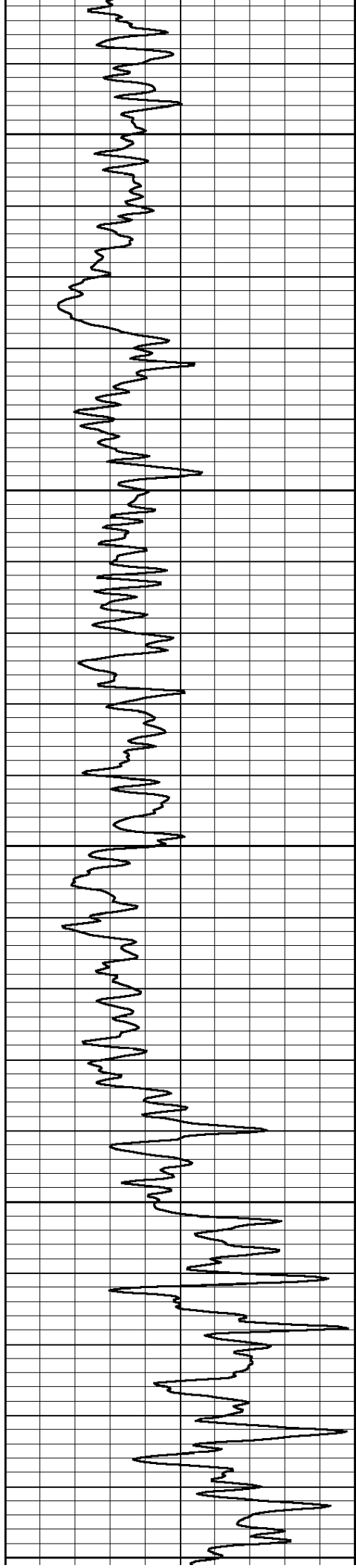
1250

1300

1350

1400





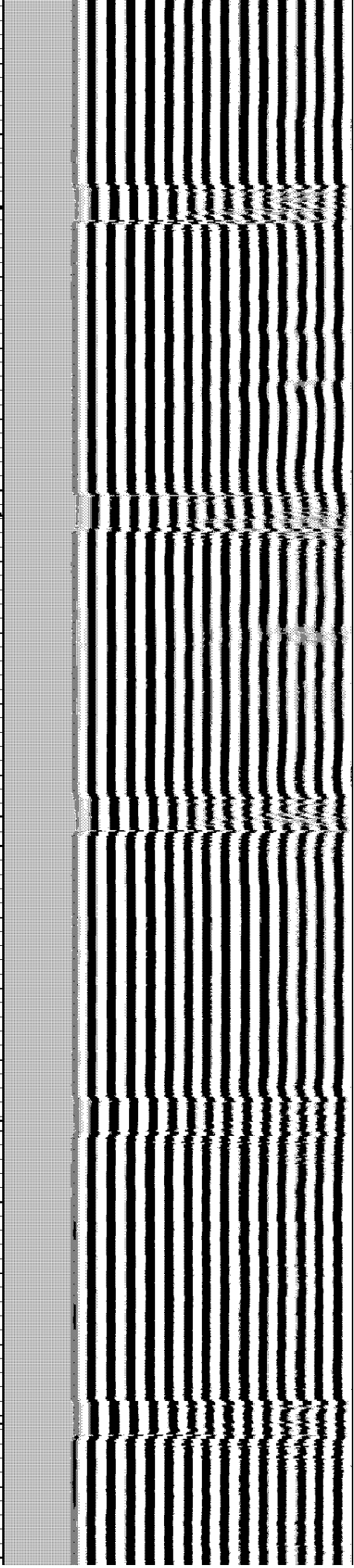
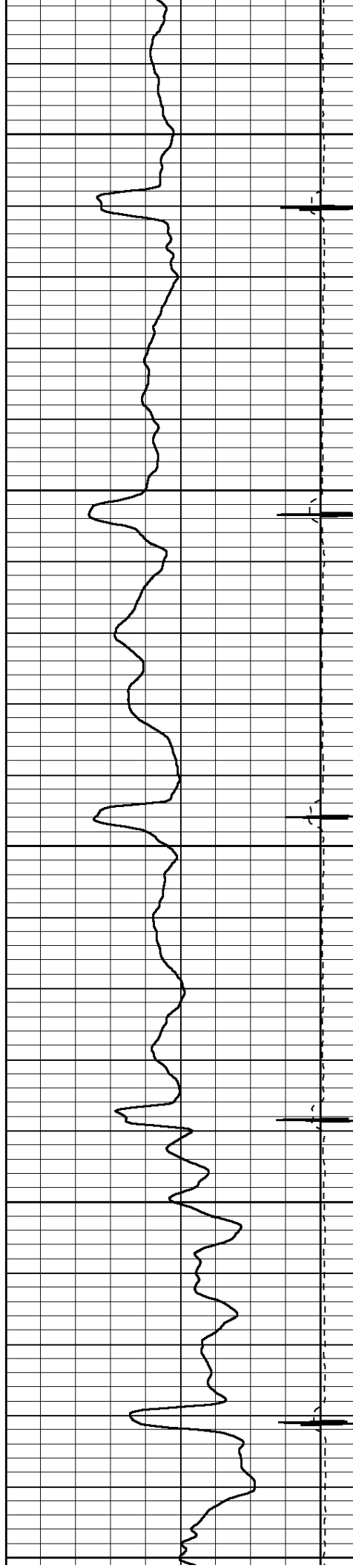
1450

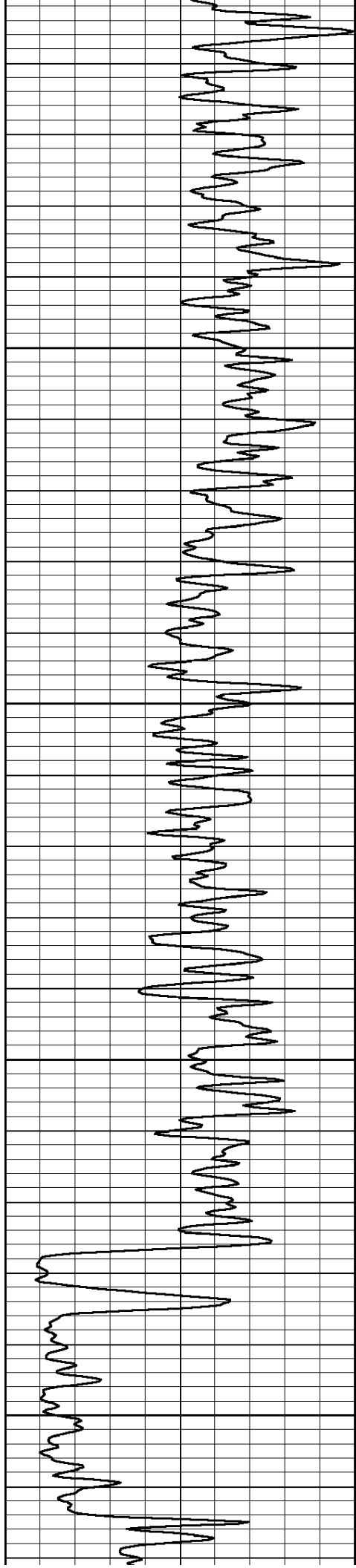
1500

1550

1600

1650



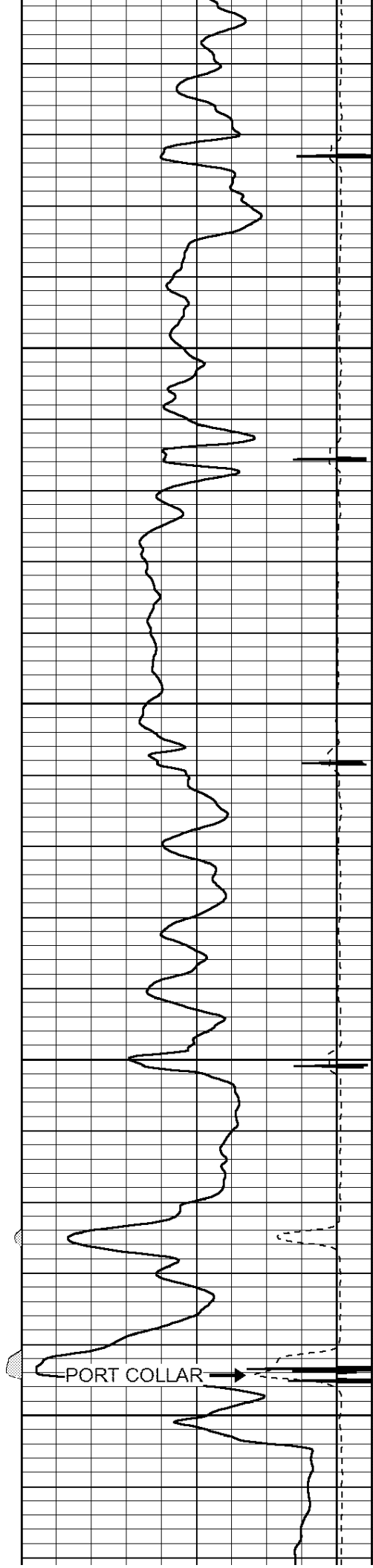


1700

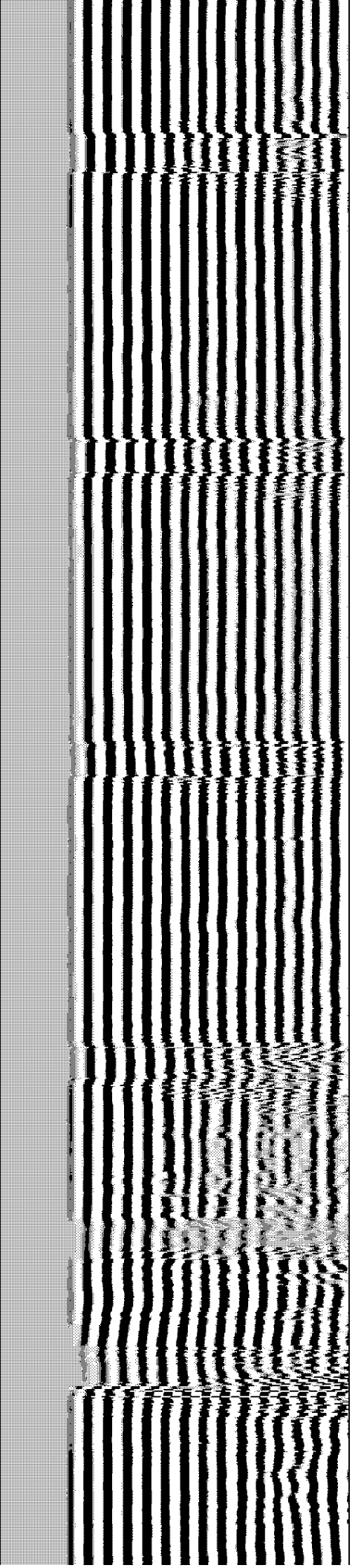
1750

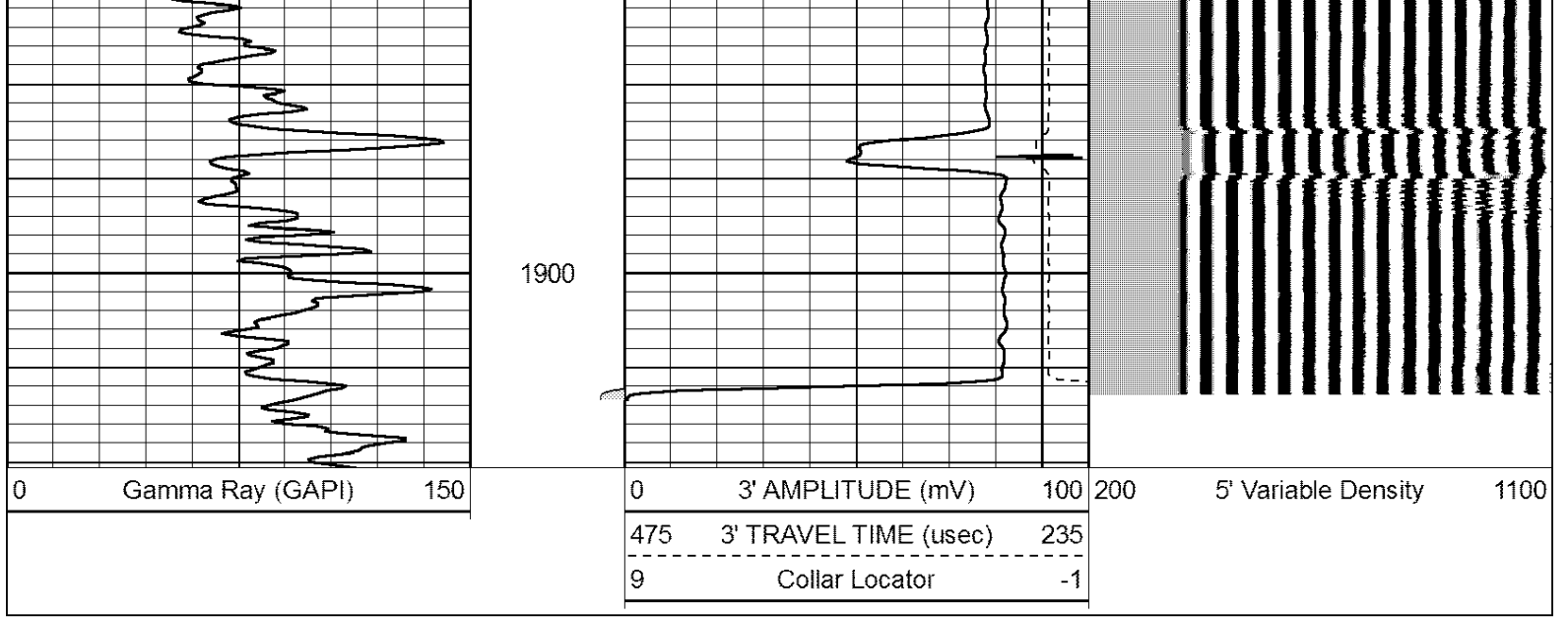
1800

1850



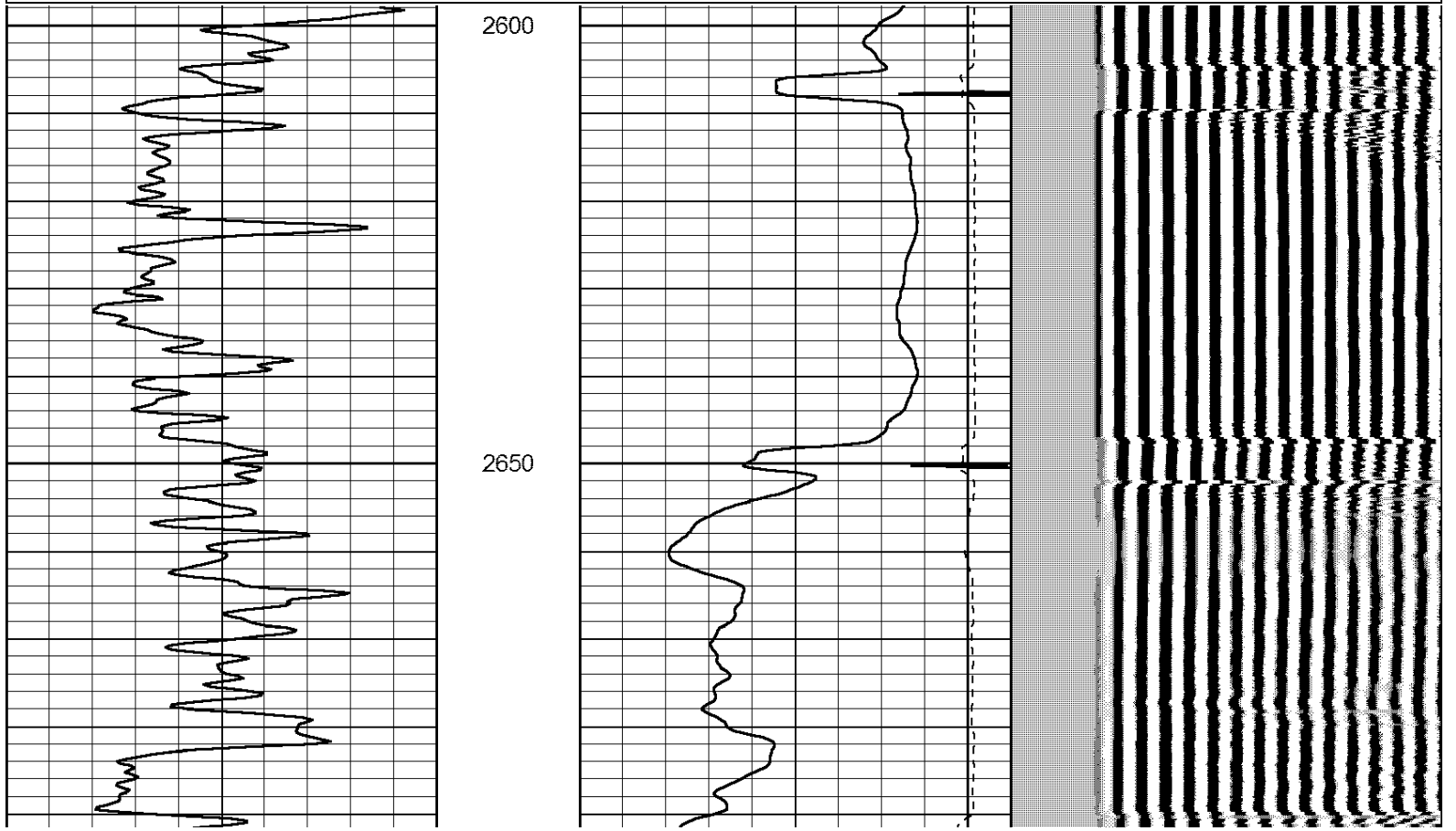
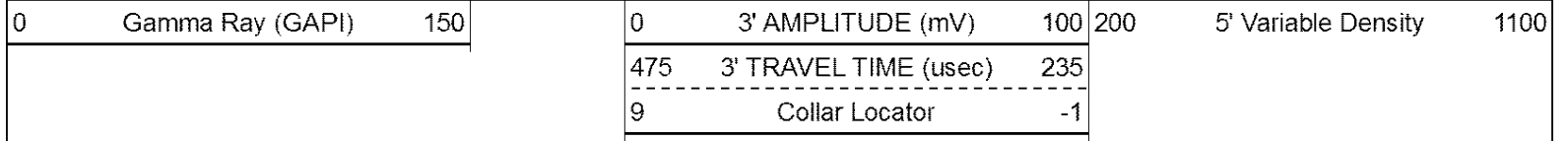
PORT COLLAR

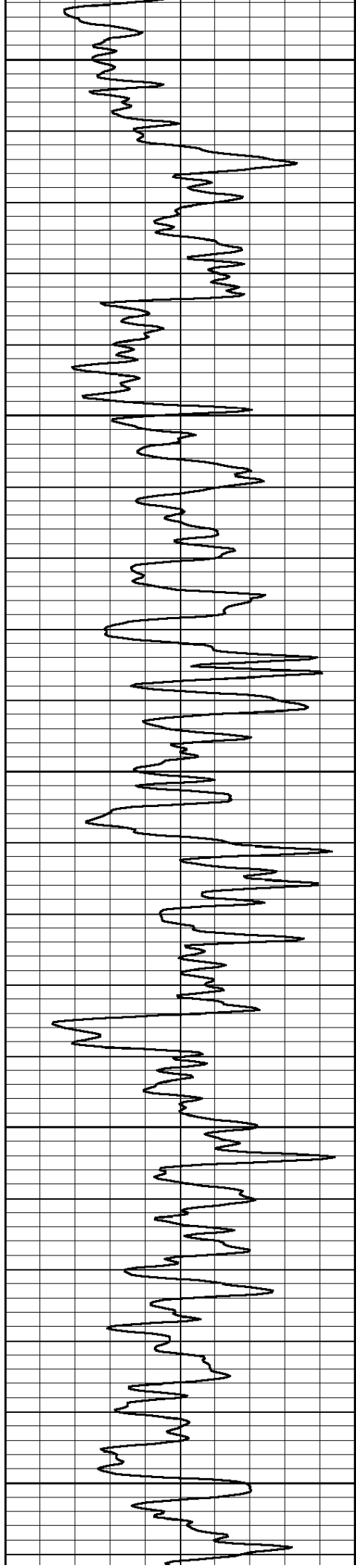




# MAIN PASS

Database File: jan142209.db  
 Dataset Pathname: pass3  
 Presentation Format: 3x5  
 Dataset Creation: Fri Jan 14 08:31:05 2022 by Log Std Casedhole 06040  
 Charted by: Depth in Feet scaled 1:240





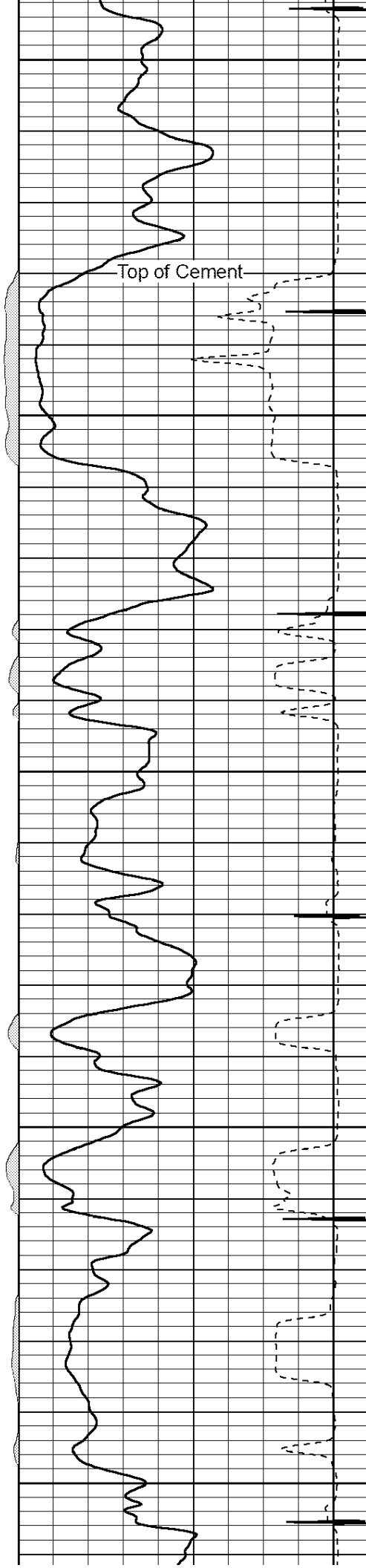
2700

2750

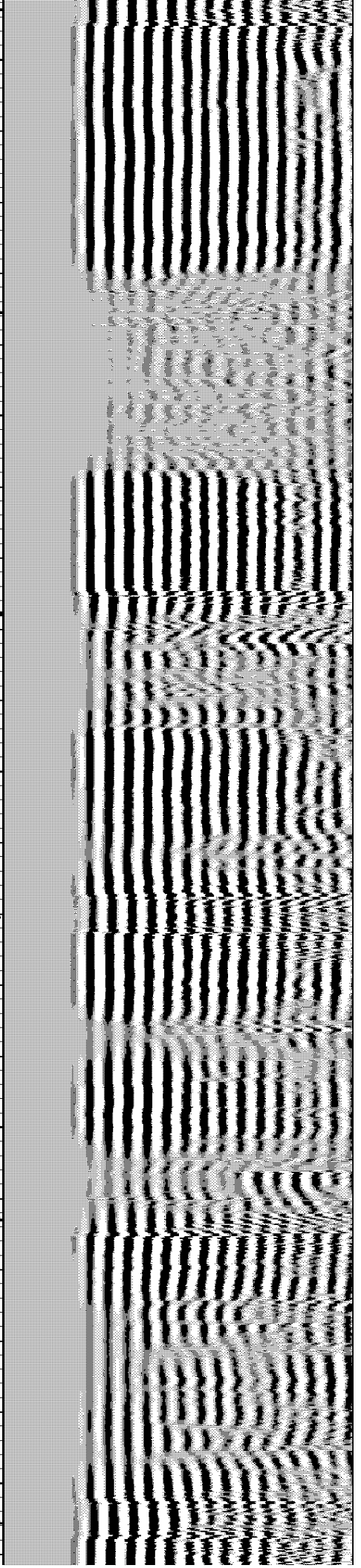
2800

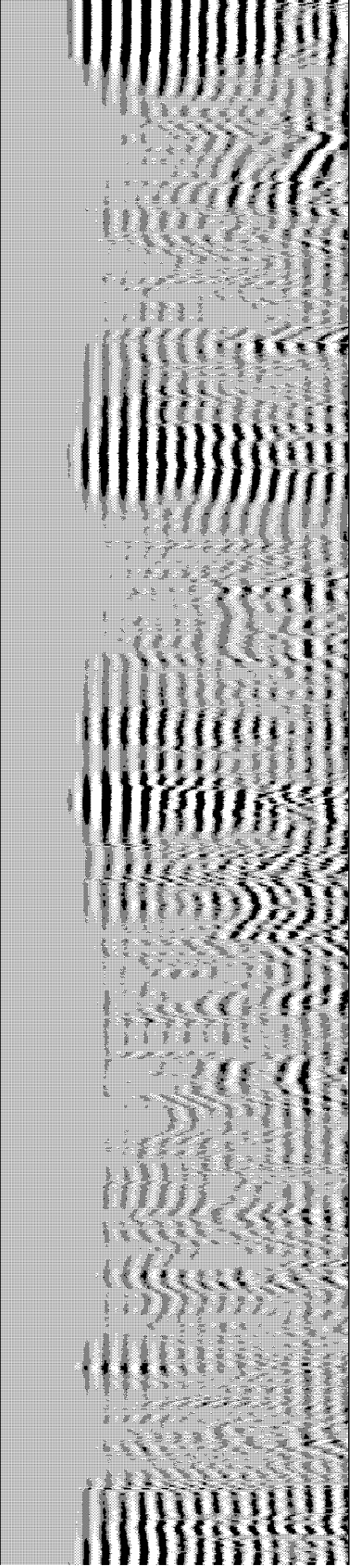
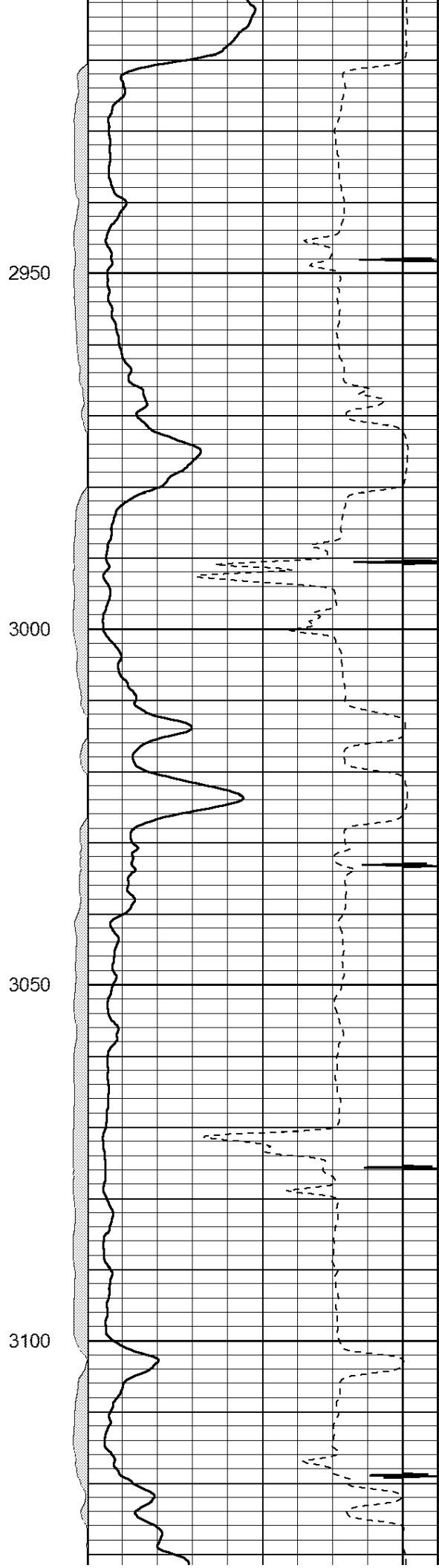
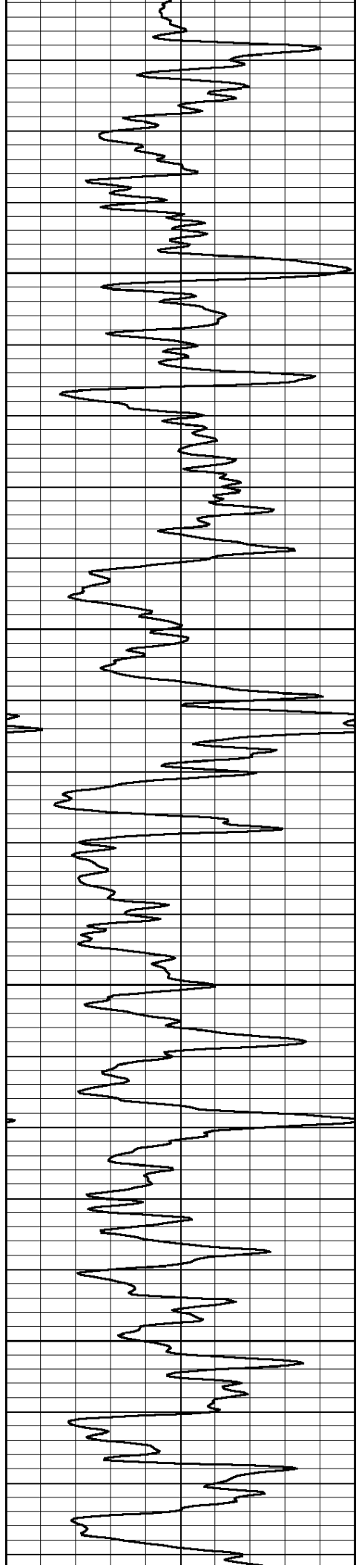
2850

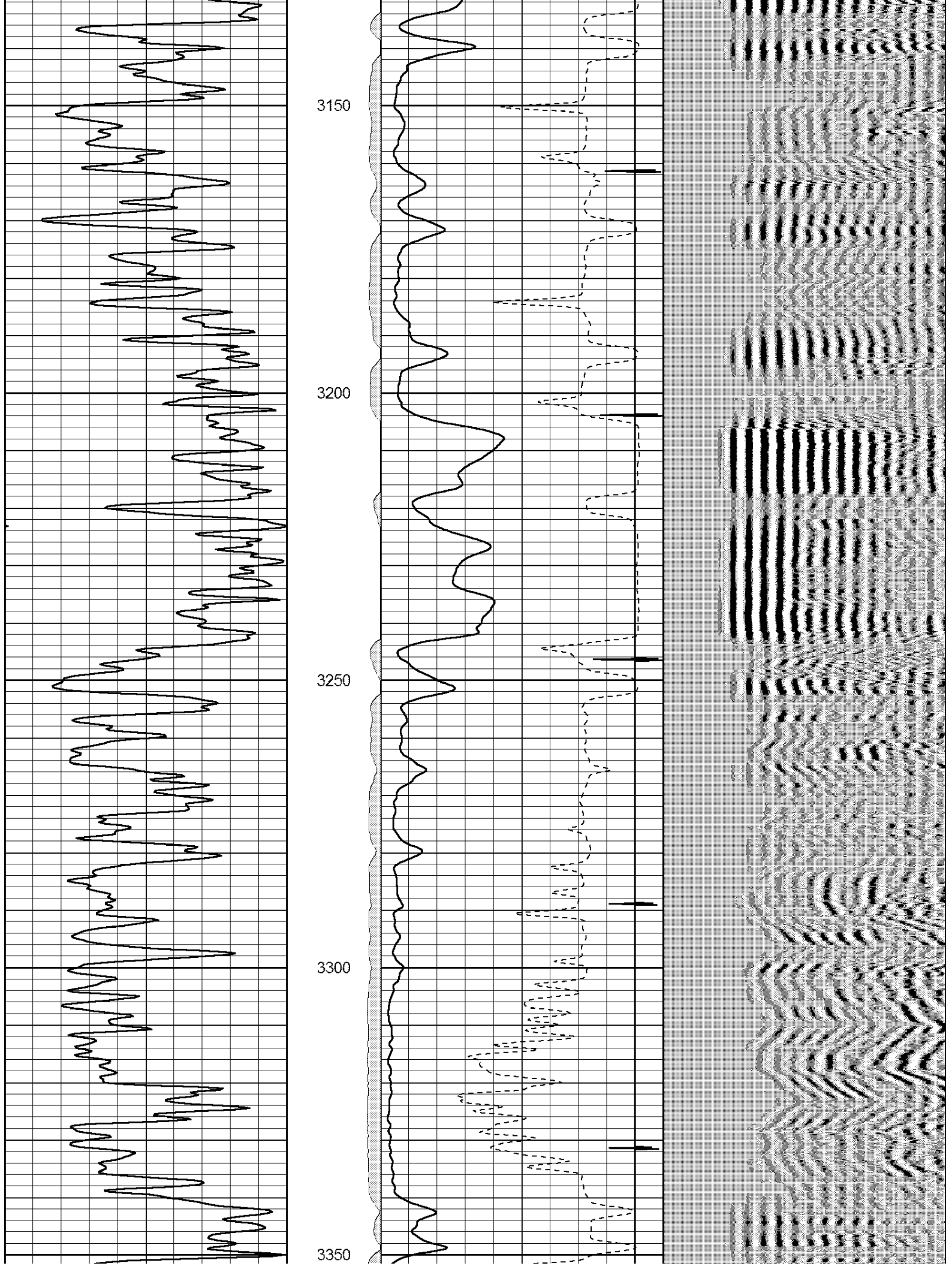
2900

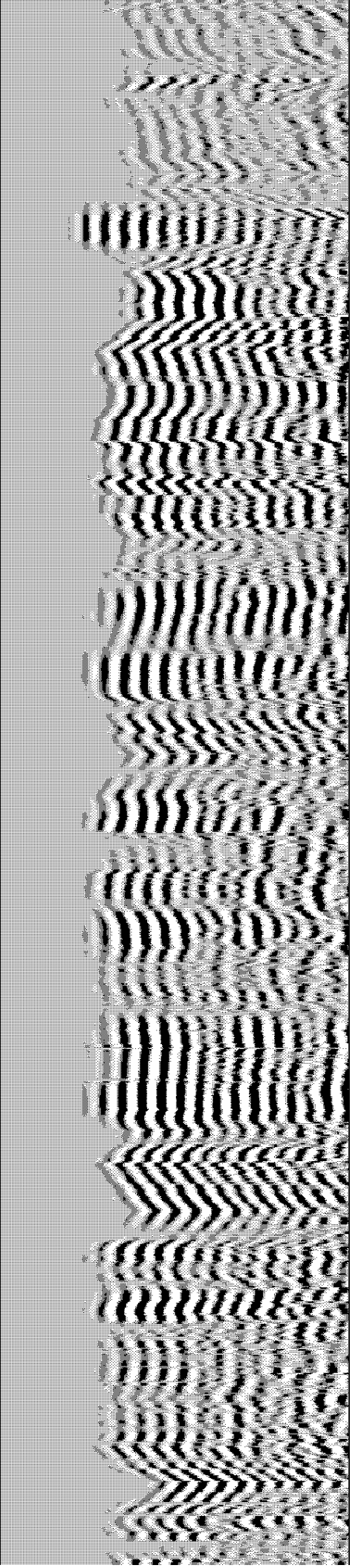
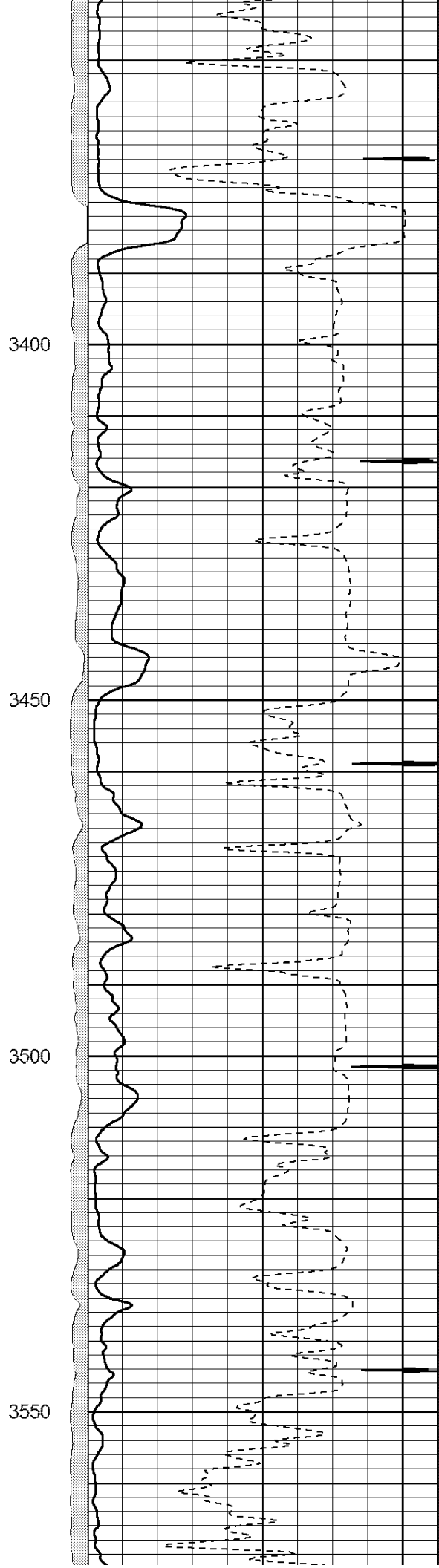
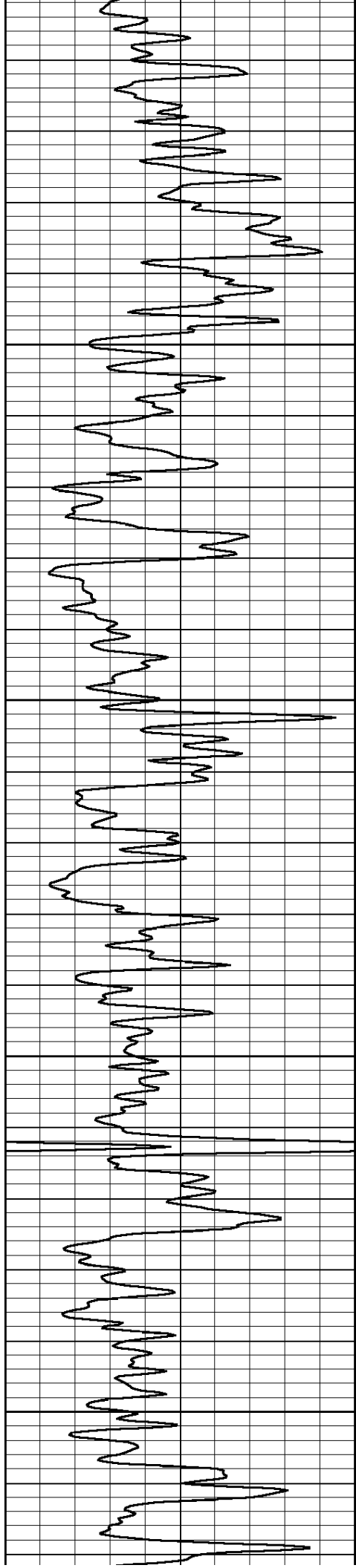


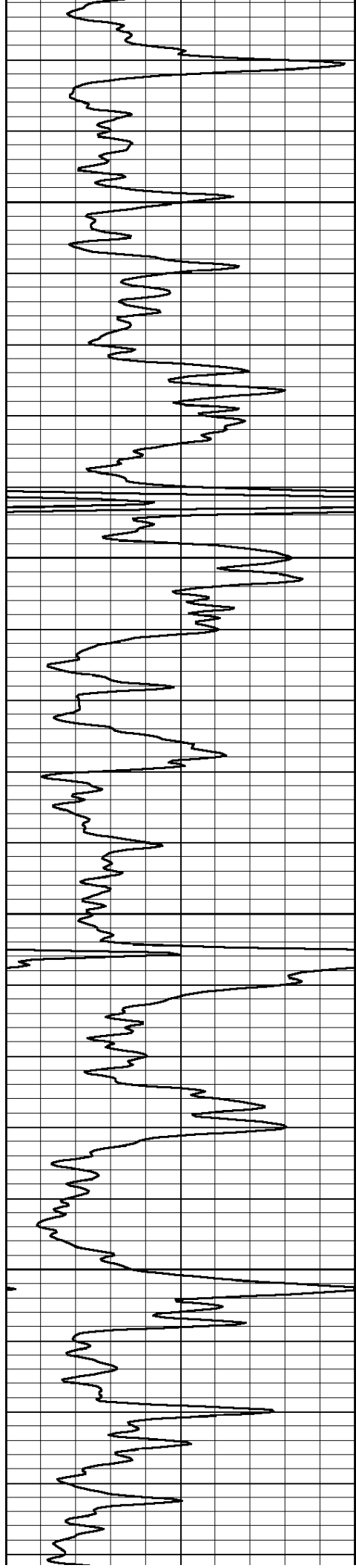
Top of Cement









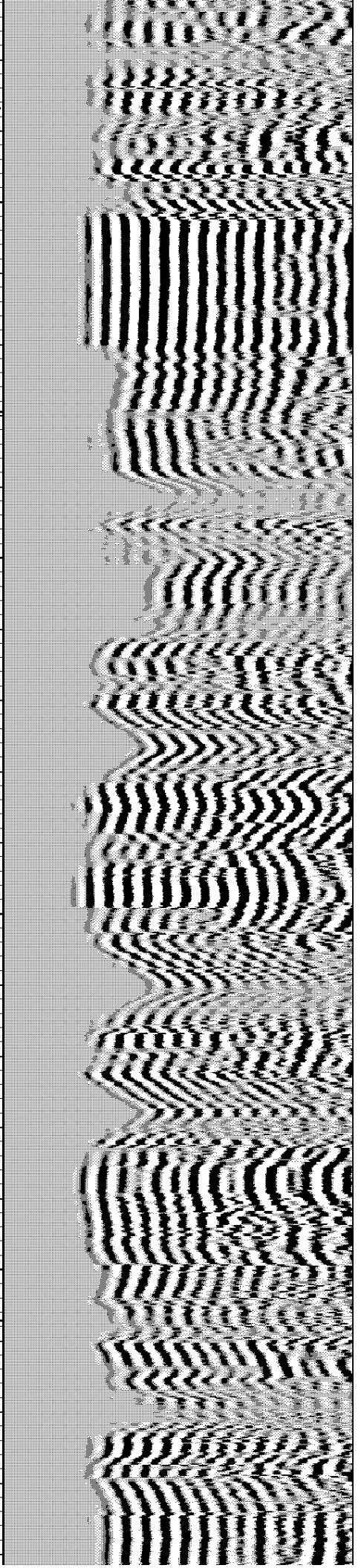
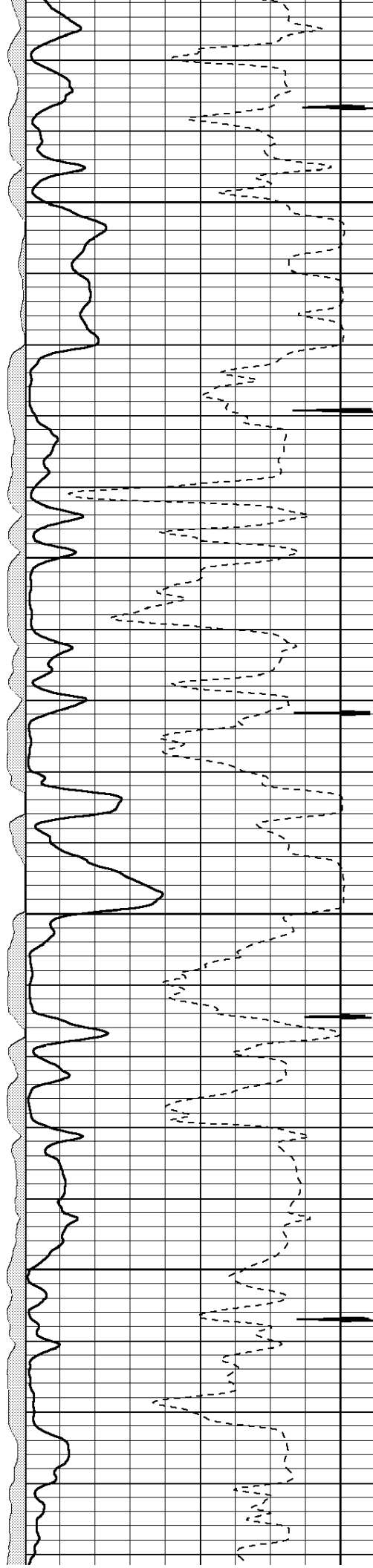


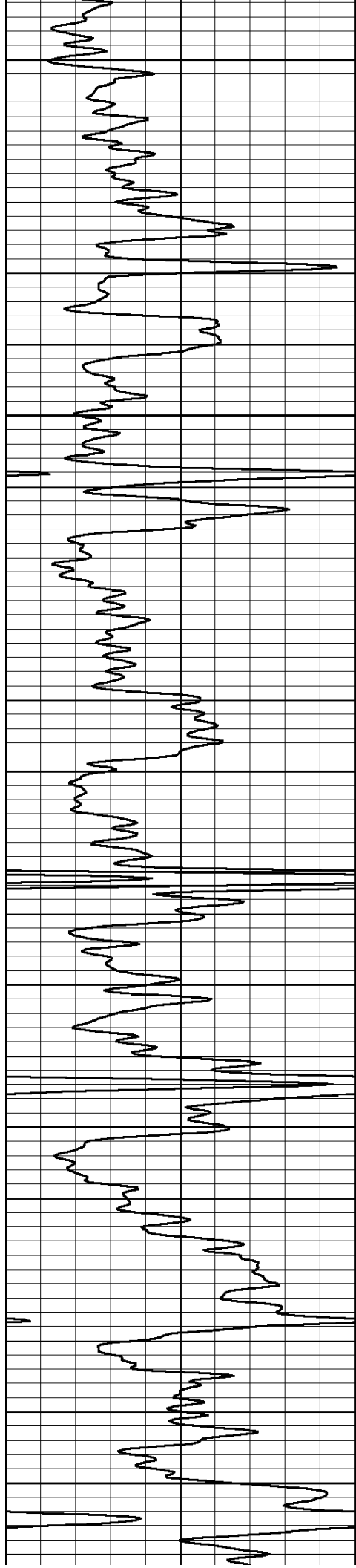
3600

3650

3700

3750





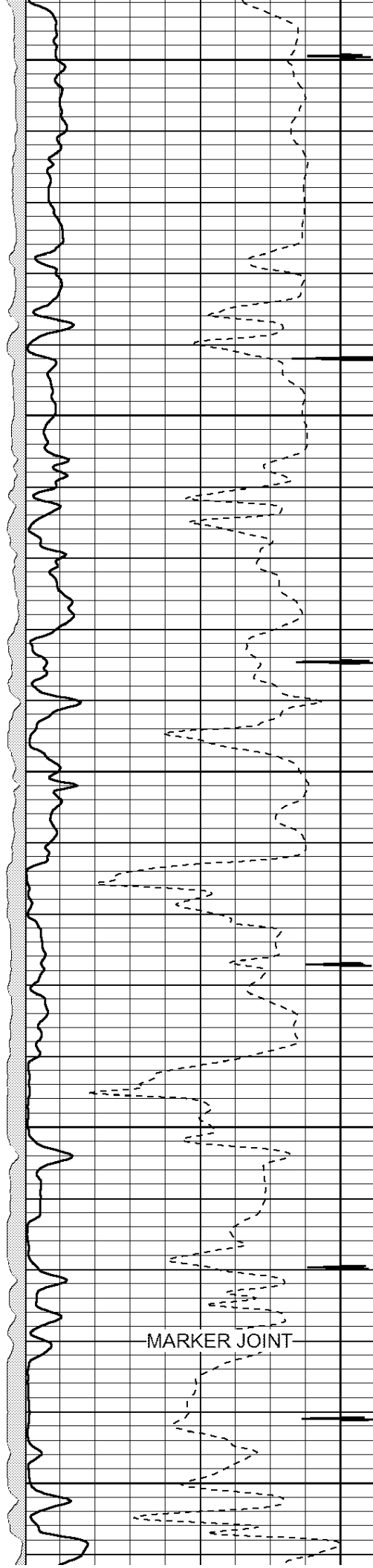
3800

3850

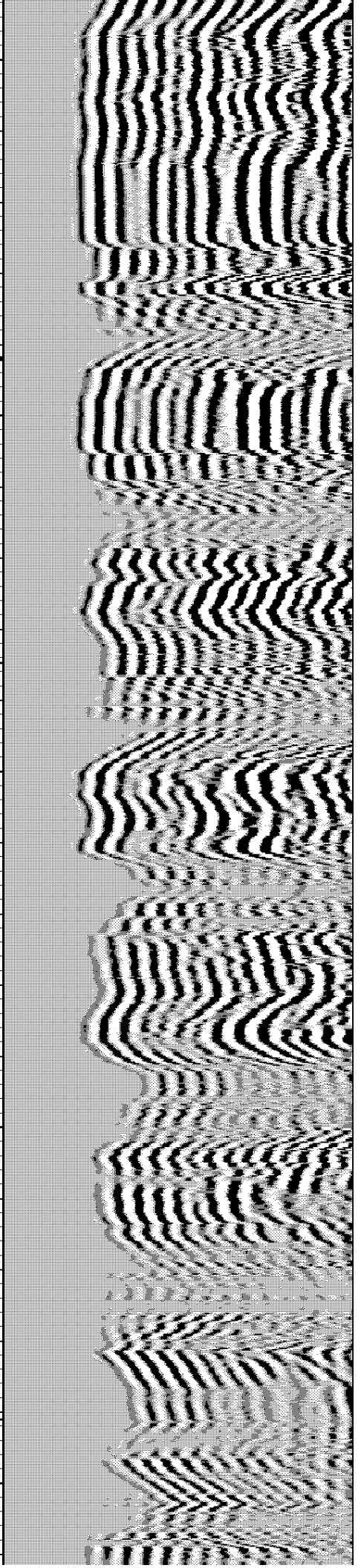
3900

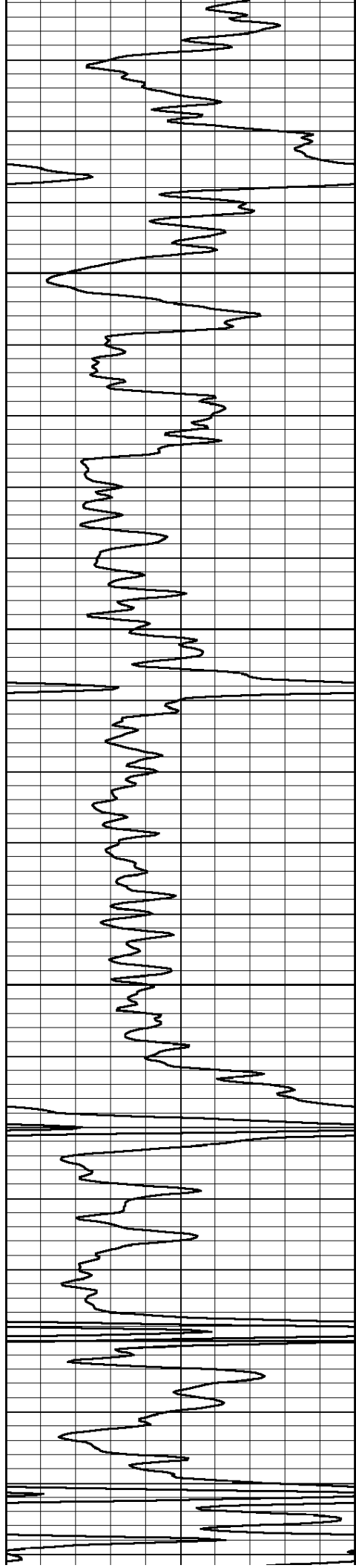
3950

4000



MARKER JOINT



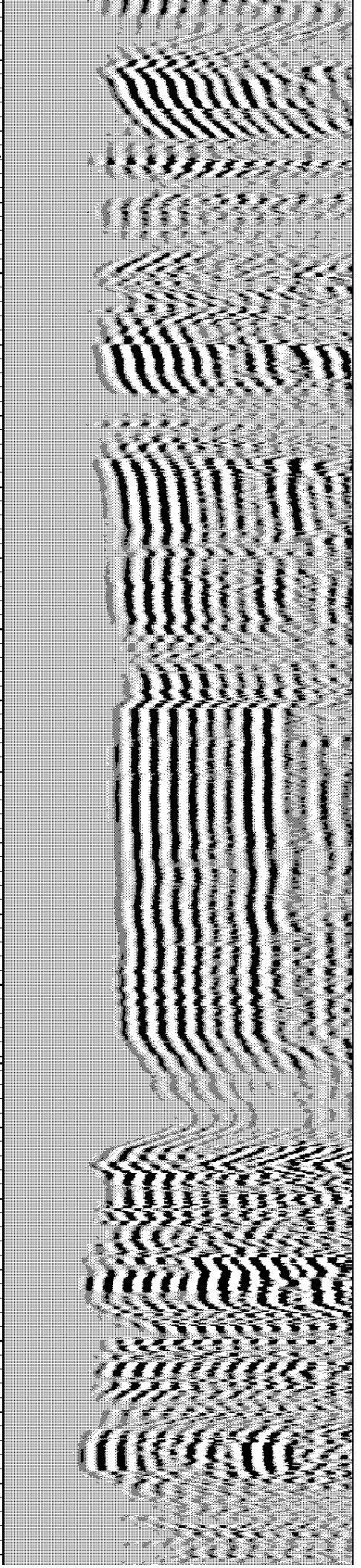
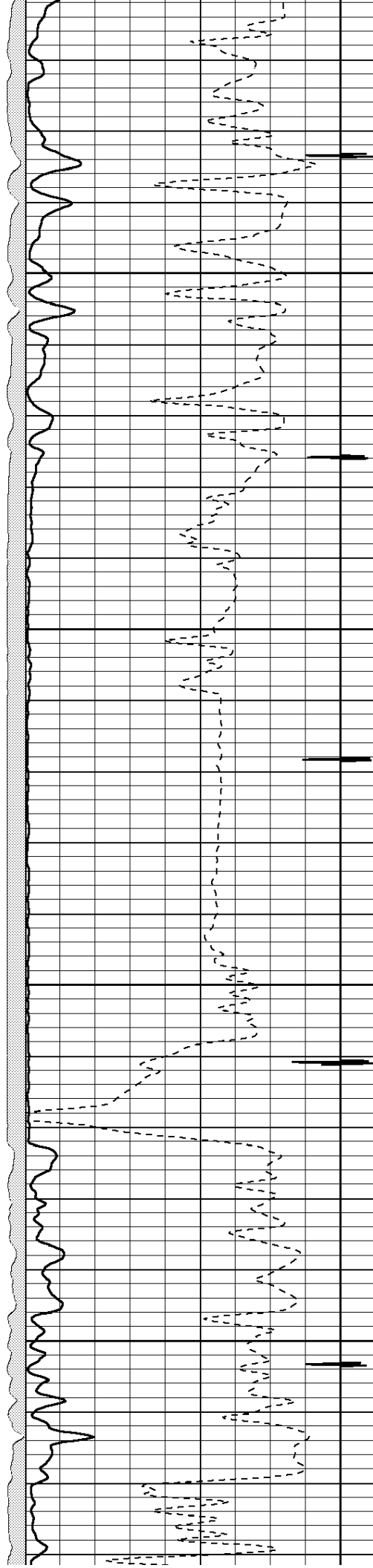


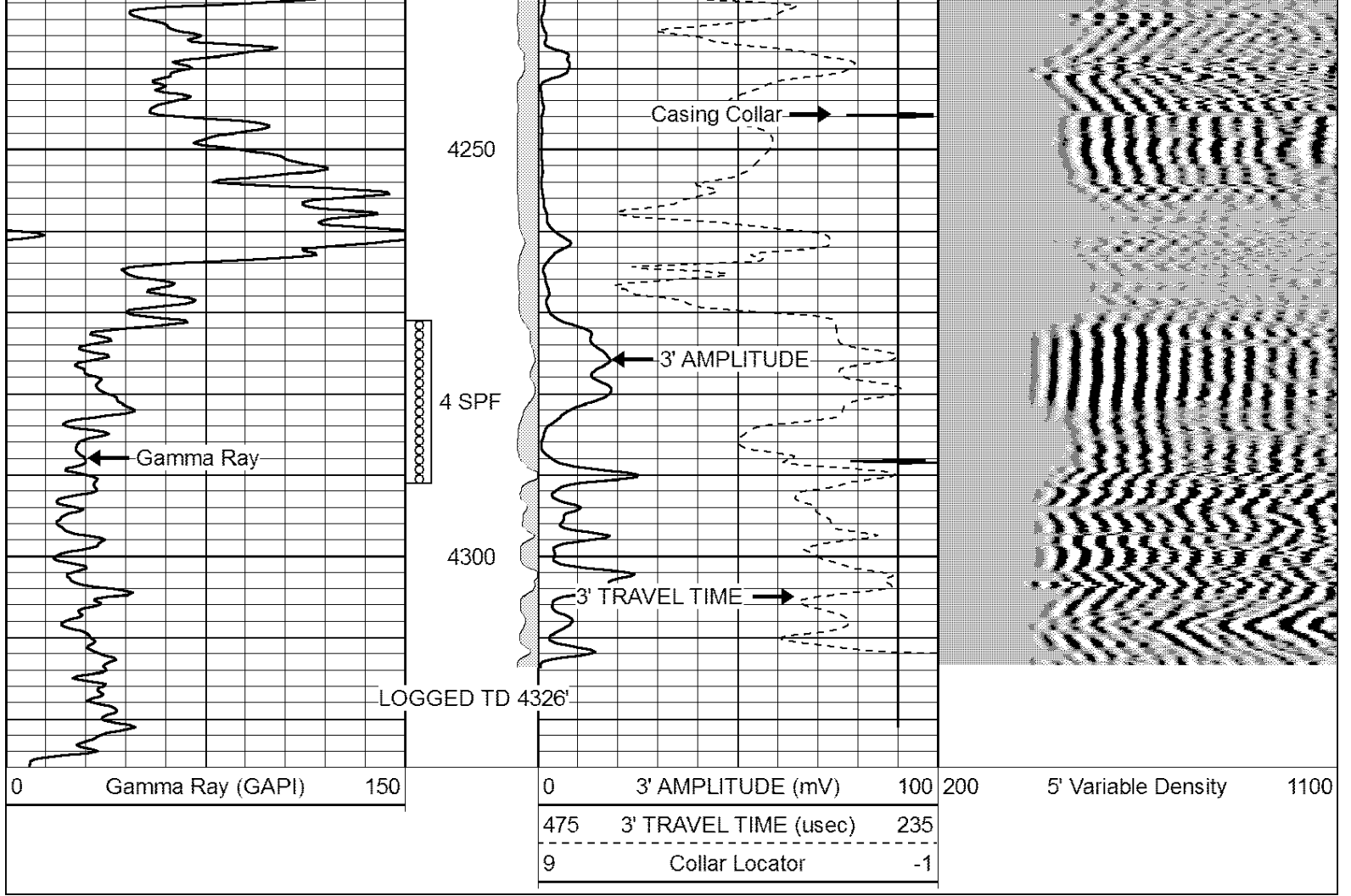
4050

4100

4150

4200





**Perf-Tech**  
Wireline Services, Inc.

# REPEAT SECTION

Database File: jan142209.db  
 Dataset Pathname: pass2  
 Presentation Format: 3x5  
 Dataset Creation: Fri Jan 14 08:25:15 2022 by Log Std Casedhole 06040  
 Charted by: Depth in Feet scaled 1:240

