

MUD LOG
WellSight Systems
Scale 1:240 (5"=100') Imperial
Measured Depth Log

Well Name: Mishler Maslo
API: 15-155-26119
Location: 2297 FNL - 219 FWL - Sec. 10 Twp. 17S R25W
License Number: 30742
Spud Date: 01/07/2022
Surface Coordinates: Region: Kansas
Drilling Completed: 01/15/2022

Bottom Hole
Coordinates:
Ground Elevation (ft): 2473 K.B. Elevation (ft): 2481
Logged Interval (ft): 3500 To: T.D Total Depth (ft): 4550
Formation: Mississippi @ Total Depth
Type of Drilling Fluid: Chemical Mud

Printed by MudLog from WellSight Systems 1-800-447-1534 www.WellSight.com

OPERATOR

Company: Palomino Petroleum, Inc
Address: 4924 SE 84TH ST
Newton KS 67114

GEOLOGIST

Name: Keaton Jones
Company: Rockhound Petroleum, LLC
Address: 255 NE 30th
St. John KS 67576
(620)-546-4010

Well Tops Comparison

Lease:	Mishler Maslo		
KB	2481		Strat
Formation	Top	Datum	Comp
Anhy	1790	691	39
Heebner	3810	-1329	1
Toronto	3831	-1350	-1
Lansing	3850	-1369	0
BKC	4145	-1664	4
Pawnee	4274	-1793	1
Fort Scott	4346	-1865	3
Cherokee	4374	-1893	1
Miss	4448	-1967	11

Well Tops Comparison

Lease:	Maslo #1		
KB	2505		
Formation	Top	Datum	
Anhy	1853	652	
Heebner	3835	-1330	
Toronto	3854	-1349	
Lansing	3874	-1369	
BKC	4173	-1668	
Pawnee	4299	-1794	
Fort Scott	4373	-1868	
Cherokee	4399	-1894	
Miss	4483	-1978	



**TRILOBITE
TESTING, INC**

DRILL STEM TEST REPORT

Palomino Petroleum
4924 SE 84th ST
New ton, KS 67114-5827
ATTN: Keaton Jones

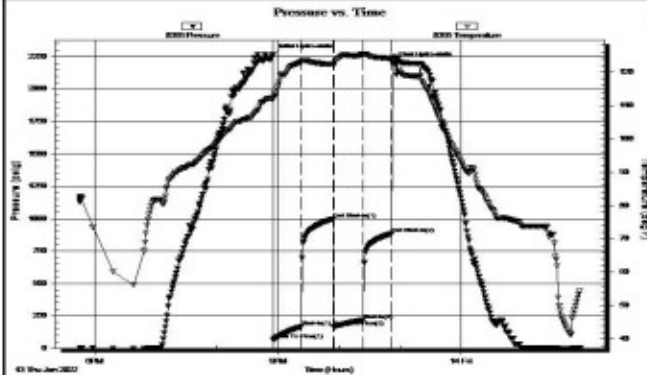
10-17-2S, Ness KS
Mishler Maslo Unit 1
Job Ticket: 68453 DST#: 1
Test Start: 2022.01.14 @ 17:45:00

GENERAL INFORMATION:

Formation: **Miss**
Deviated: No Whipstock ft (KB)
Time Tool Opened: 20:55:02
Time Test Ended: 01:57:02
Test Type: Conventional Bottom Hole (Initial)
Tester: Kevin Webster
Unit No: 72
Interval: **4386.00 ft (KB) To 4467.00 ft (KB) (TVD)**
Reference Elevations: 2477.00 ft (KB)
Total Depth: 4467.00 ft (KB) (TVD) 2467.00 ft (CF)
Hole Diameter: 7.78 inches Hole Condition: Poor KB to GR/CF: 10.00 ft

Serial #: 8365 **Inside**
Press@RunDepth: 218.50 psig @ 4387.00 ft (KB) Capacity: psig
Start Date: 2022.01.13 End Date: 2022.01.14 Last Calib.: 2022.01.14
Start Time: 17:45:01 End Time: 01:57:02 Time On Btm: 2022.01.13 @ 20:54:47
Time Off Btm: 2022.01.13 @ 22:53:47

TEST COMMENT: F- Fair blow built to 20" 30 min
IS- No returns 30 min
FF- WSB built to 9" 30 min
FSI- No returns 30 min



PRESSURE SUMMARY

Time (Min.)	Pressure (psig)	Temp (deg F)	Annotation
0	2264.32	112.45	Initial Hydro-static
1	64.53	111.78	Open To Flow (1)
29	166.59	123.04	Shut-in(1)
60	996.85	122.44	End Shut-in(1)
60	164.46	122.11	Open To Flow (2)
90	218.50	125.41	Shut-in(2)
118	886.61	124.11	End Shut-in(2)
119	2206.31	124.51	Final Hydro-static

Recovery

Length (ft)	Description	Volume (bbl)
149.00	MCO 50% Oil 50% Mud	2.09
186.00	HOCM 15% Oil 85% Mud	2.61

Gas Rates

	Choke (Inches)	Pressure (psig)	Gas Rate (Mc/d)

ACCESSORIES

MINERAL

- Anhy
- Arggrn
- Arg
- Bent
- Bit
- Breclfrag
- Calc
- Carb
- Chtdk
- Chtlt
- Dol
- Feldspar
- Ferrpel
- Ferr
- Glau

- Gyp
- Hvymin
- Kaol
- Marl
- Minxl
- Nodule
- Phos
- Pyr
- Salt
- Sandy
- Silt
- Sil
- Sulphur
- Tuff

- Gyp
- Hvymin
- Kaol
- Marl
- Minxl
- Nodule
- Phos
- Pyr
- Salt
- Sandy
- Silt
- Sil
- Sulphur
- Tuff

FOSSIL

- Algae
- Amph
- Belm
- Bioclst
- Brach
- Bryozoa
- Cephal
- Coral
- Crin
- Echin
- Fish
- Foram
- Fossil
- Gastro
- Oolite

- Ostra
- Pelec
- Pellet
- Pisolite
- Plant
- Strom

- Ostra
- Pelec
- Pellet
- Pisolite
- Plant
- Strom

STRINGER

- Anhy
- Arg
- Bent
- Coal
- Dol
- Gyp
- Ls
- Mrst

- Siltstrg
- Ssstrg

TEXTURE

- Boundst
- Chalky
- Cryxln
- Earthy
- Finexln
- Grainst
- Lithogr
- Microxln
- Mudst
- Packst
- Wackest

OTHER SYMBOLS

POROSITY

- Earthy
- Fenest
- Fracture
- Inter
- Moldic
- Organic
- Pinpoint

- Vuggy

SORTING

- Well
- Moderate
- Poor

ROUNDING

- Rounded
- Subrnd
- Subang
- Angular

- Even
- Spotted
- Ques

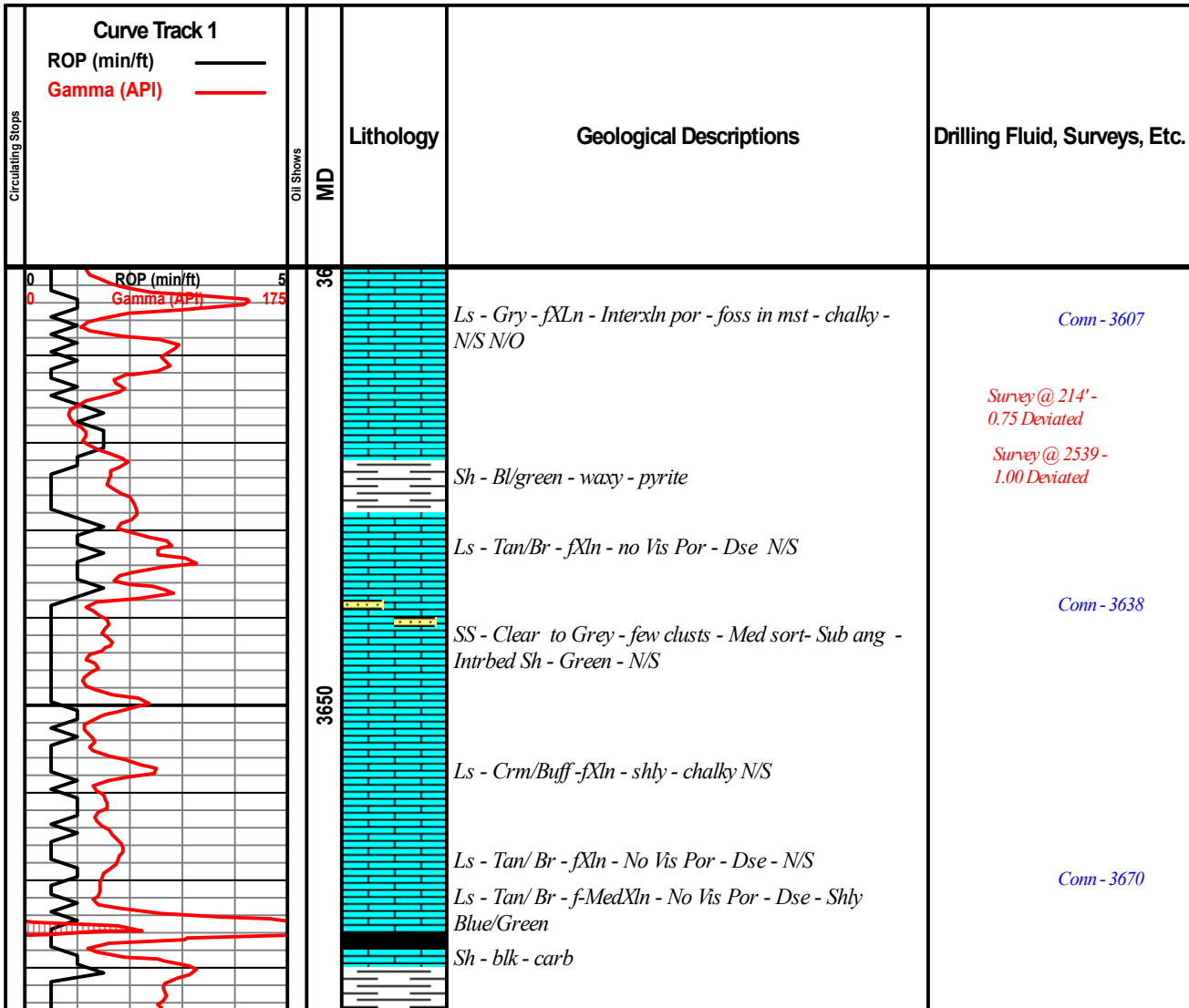
- Even
- Spotted
- Ques

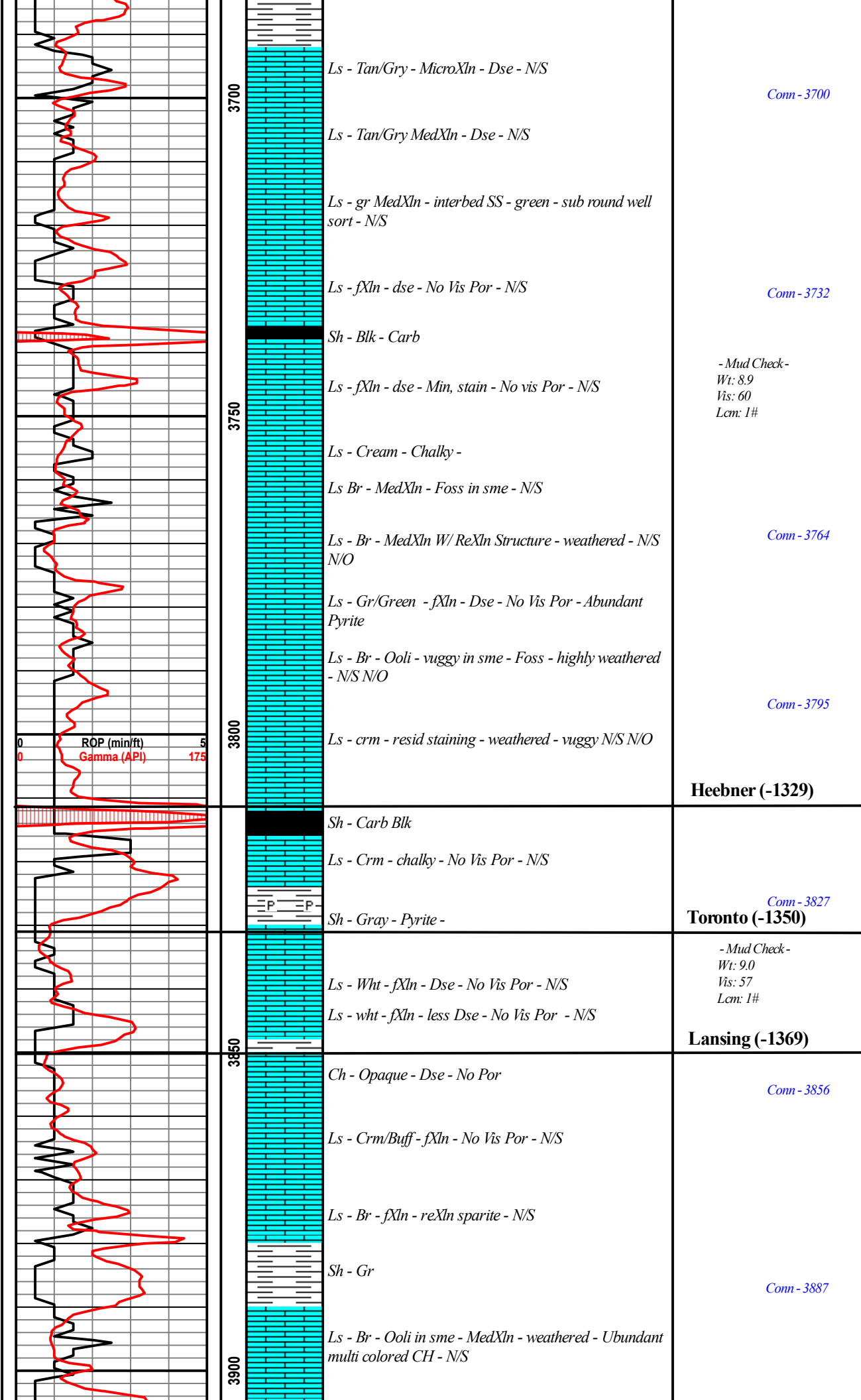
INTERVAL

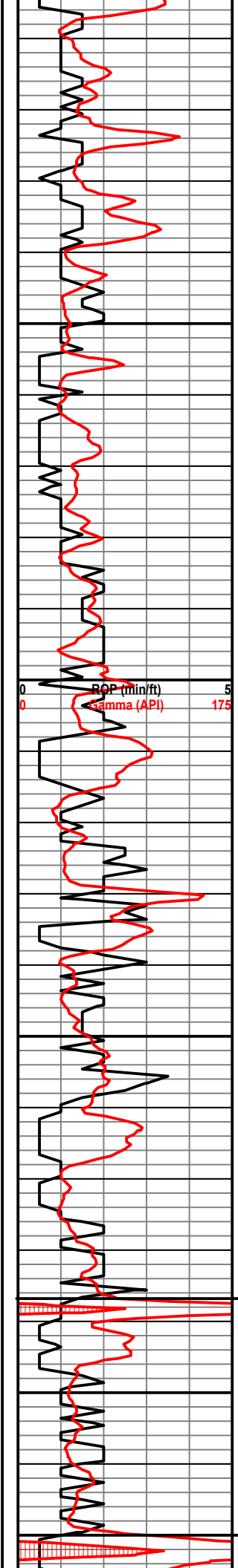
- Core
- Dst 2
- Dst

EVENT

- Rft
- Sidewall

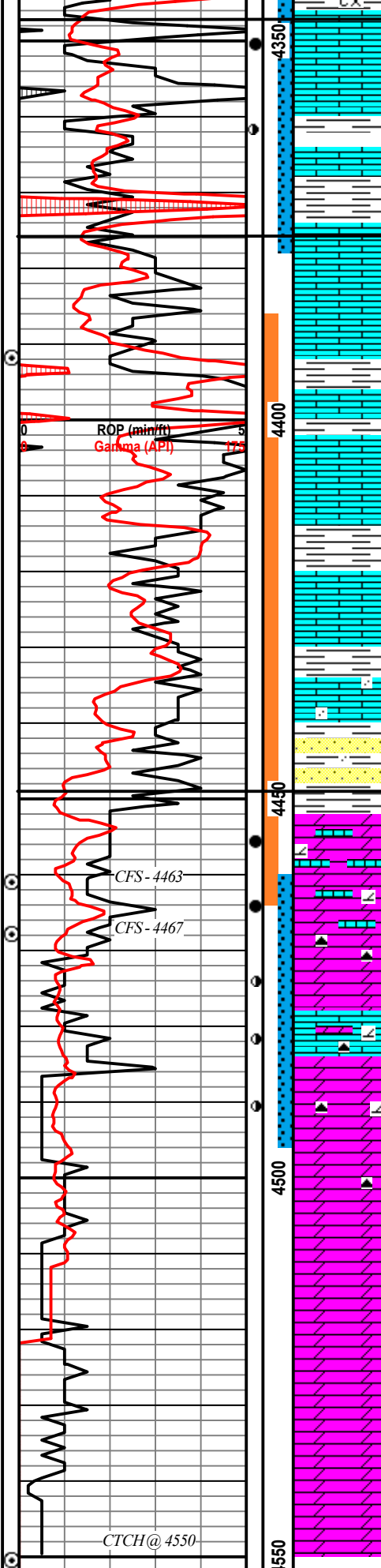






Ls - Crm - fXln - No Vis Por - N/S
Ls - Br - MedXln - Slightly weathered & Vuggy Por in Sme - N/S
Ls - Crm/Buf - fMedXln - SLightly Weathered - N/S
Ls - Crm/Buf - FineXln - No Vis Por N/S
Ls - Br - MedXln - Vry Few W/ Oolic Por - N/S N/O
Ls - Gr - MedXln - Highly Oolitic por - N/S N/O
Ls - Br - fXln - No Vis Por - N/S
Ls - br/Gr - fXln - No Vis Por - N/S
Ls - Gr - Dse - Shly - MedXln - No Vis Por - N/S
Sh - Gr
Ls - Br - fXln -Dse - No Vis Por -
Sh - gr
Ls - br - fXln - Dse - no Vis Por - N/S
Ls - crm - MedXln - InterXln Por - fairly Dse - N/S
Ls - Br - MedXln - Highly oolic W./Interconn Por - ooli in most - N/S N/O
Ls - crm/br transitioning into MedXln foss - Dse - few Oolic/Ooli Por - N/S
Ls - Gr - fXln - Vry Dse - No Vis Por
As Above
Shl Blk Carb

Conn - 3918
 - Mud Check -
 Wt: 9.1
 Vis: 54
 Lcm: 1#
 Conn - 3950
 Conn - 3983
 Conn - 4014
 - Mud Check -
 Wt: 9.1
 Vis: 52
 Lcm: 1#
 Conn - 4045
 - Mud Check -
 Wt: 9.4
 Vis: 52
 Lcm: 1#
 Conn - 4076
Stark (-1605)
 Jet #1 Add Premix
 Conn - 4108
Hushpuckney (-1639)



Ls - Br - MedXln - Vuggy/Oolic Por - highly weathered sme pin point por - fairly saturated - sme live gas - live oil when broken - weak odor - No streaming flour

Sh - Mstly Gr - Sme red beds

Conn - 4360

Cherokee (-1893)

Ls - Tan /Buff- Dse - some foss - No Vis good Por - Relatively dirty zone with intrbedded shales, sands, and chert N/S N/O

Ls - br-clear W/SS clusters - Dse - MedXln - No good visual Por - No Shows No Odor

Mud Co/Service report
 Depth - 4391
 Pump Pressure 800
 Bottoms up 40 min
 Weight - 9.1
 Viscosity - 55
 Filtrate - 5.8
 Chloride 900 ppm
 Lcm - 1

Conn - 4391

Bit Trip @ 4391

Ch - Various colors - mstly yellow with inbed shales multi colored as well

SS - Cluster - med grained - sub round - well sorted - intrbed shale - sme residule oil stains - N/S N/O No Streaming Flour

Conn - 4423

-Mud Check-
 Wt: 9.4
 Vis: 55

Mississippian (-1967)

Dol - Ls - br - dse Med Xln - vuggy SFO&G Strong odr

Dol - br - sucrosic - vuggy - weathered por - dse - SFO&G strong odr - well saturated when broken. No Streaming Flour

Dol - Br/ Pink Tint - Sucrosic to vuggy Por - MedXln - Dse - Heay residule staining - fair odor - Show of gas when broken in few samples. few oil specks when broken - No Streaming Flour

Ls - Tan - dolomitic in sme- MedXln - Vuggy -Oom Por in mst - slight show of Heavy oil - live oil on break - Strong Odor

Dol, Limy - f-MedXln - oolic to oom in mst - vuggy - free oil&G when broken - abundance of baren Por - Strong Odr

Dol - crm/Buff- Micro/fXln - N/S oil - declining odor

Dol - crm/Buff- Micro/fXln - N/S - Weak if any odor

As Above - N/S NO

DST (1) Miss
 Interval - 4386-4467
 30-30-30-30
 IF: 20"
 ISI: No Blow
 FF: 9"
 FSI: No Blow
 IH: 2264 FH:2206
 FIF: 64 FFF: 166
 SIF: 164 SFF: 218
 ISIP:996 FSIP:886

Conn - 4454

Conn - 4486

Recovery - 335'
 149' MCO - 50% O,
 50%M
 186' HOCM -
 15%O, 85%M

Conn - 4517

DST (3) Lower Miss
 Interval - 4461-4493
 30-30-30-30
 IF:BOB 6 min
 ISI: No Blow
 FF: BOB 7 min
 FSI:No Blow

IH: 2395 FH: 2266
 FIF: 39 FFF: 252
 SIF: 260 SFF: 429
 ISIP; 1207 FSIP;1258

Conn - 4548

Recovery - 868
 124' GWCM 5%G, 15%wtr,
 80%M, TR Oil

R.TD 4550
 L.TD 4549

