



DUAL INDUCTION LOG

Company PALOMINO PETROLEUM, INC.

Well THE DARK KNIGHT #1

Field ARNOLD NORTH

County NESS State KANSAS

Location: API #: 15-135-26161-0000

564' FNL & 137' FEL
SE - NE - NE - NE

SEC 10 TWP 16S RGE 25W

Permanent Datum GROUND LEVEL Elevation 2551
Log Measured From KELLY BUSHING 11' A.G.L.
Drilling Measured From KELLY BUSHING

Other Services
CDL/CNL
MEL
Elevation
K.B. 2562
D.F. 2560
G.L. 2551

Date	3/23/22
Run Number	ONE
Depth Driller	4625
Depth Logger	4625
Bottom Logged Interval	4623
Top Log Interval	00
Casing Driller	8 5/8"@259'
Casing Logger	259
Bit Size	7 7/8"
Type Fluid in Hole	CHEMICAL MUD
Density / Viscosity	9.4/52
pH / Fluid Loss	10.0/8.0
Source of Sample	FLOWLINE
Rm @ Meas. Temp	1.30@60F
Rmf @ Meas. Temp	.975@60F
Rmc @ Meas. Temp	1.56@60F
Source of Rmf / Rmc	MEASUREMENT
Rm @ BHT	.639@122F
Time Circulation Stopped	3 HOURS
Time Logger on Bottom	11:00 A.M.
Maximum Recorded Temperature	122F
Equipment Number	922339
Location	HAYS, KANSAS
Recorded By	JEFF LUEBBERS
Witnessed By	RYAN SEIB
	COLE ROBBEN

<<< Fold Here >>>

All interpretations are opinions based on inferences from electrical or other measurements and we cannot and do not guarantee the accuracy or correctness of any interpretation, and we shall not, except in the case of gross or willful negligence on our part, be liable or responsible for any loss, costs, damages, or expenses incurred or sustained by anyone resulting from any interpretation made by any of our officers, agents or employees. These interpretations are also subject to our general terms and conditions set out in our current Price Schedule.

15-135-26161-0000

Comments

THANK YOU FOR USING ELI WIRELINE HAYS, KANSAS (785) 628-6395
DIRECTIONS
ARNOLD, KS., W. ON HWY 4 TO "RD. J", 3N., W. INTO

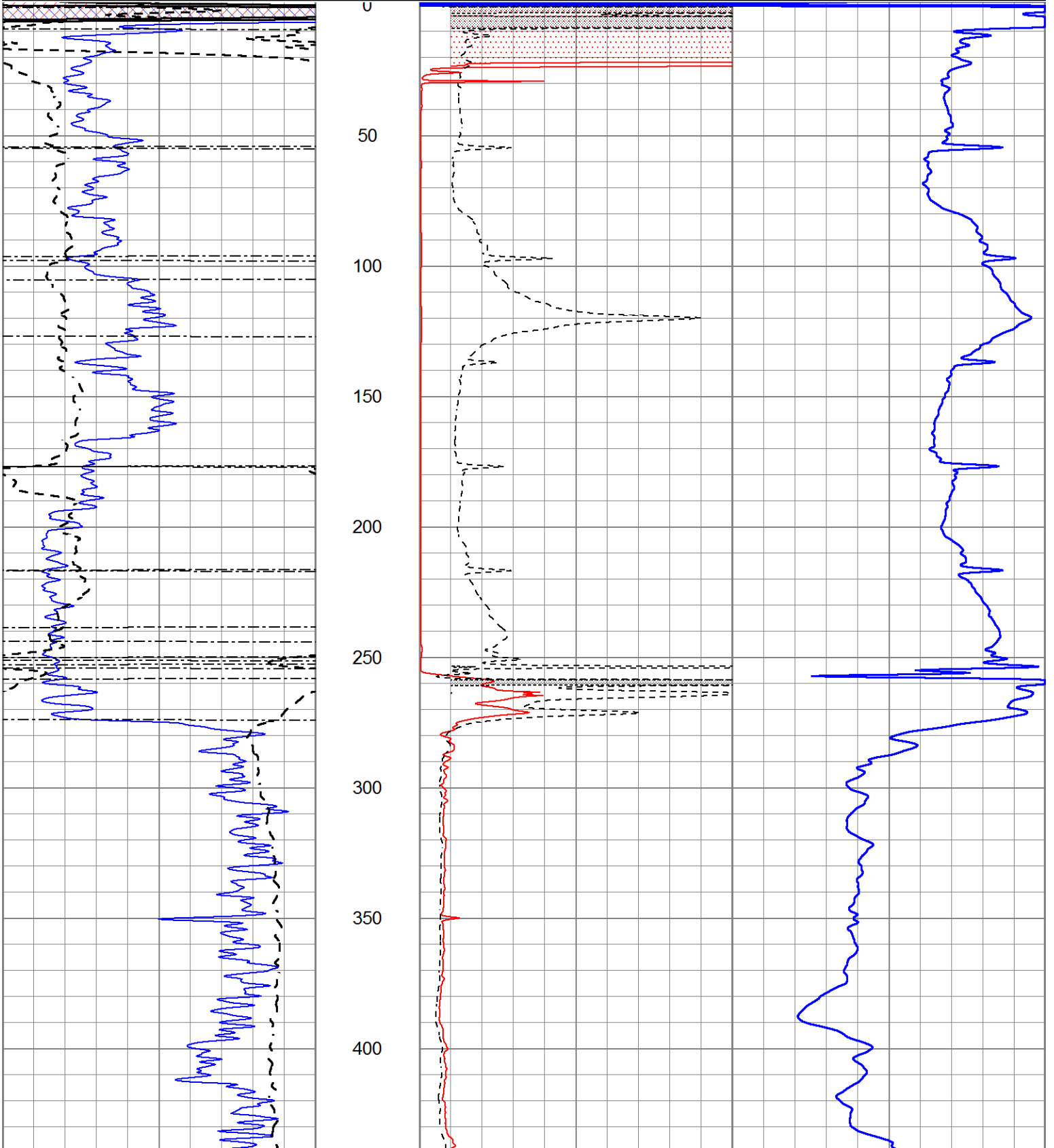


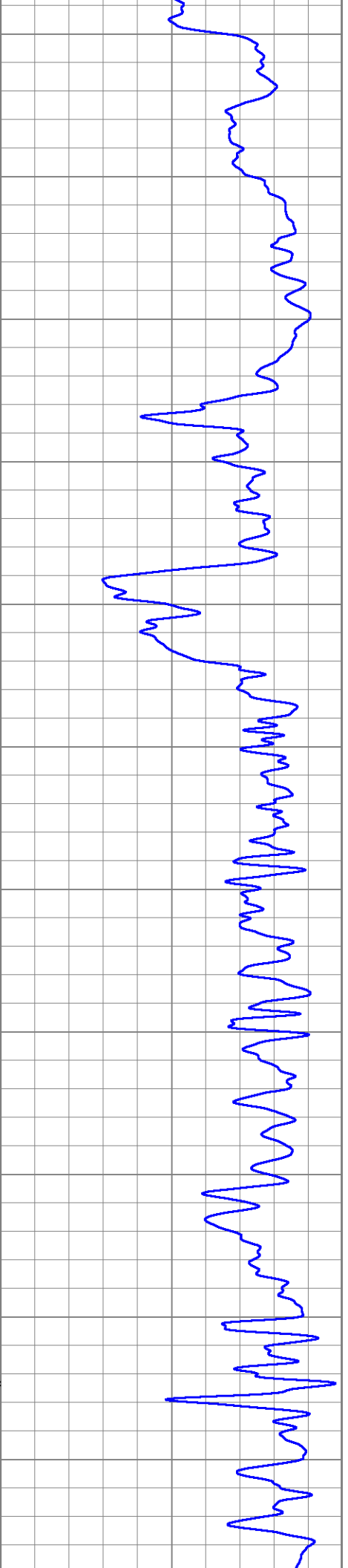
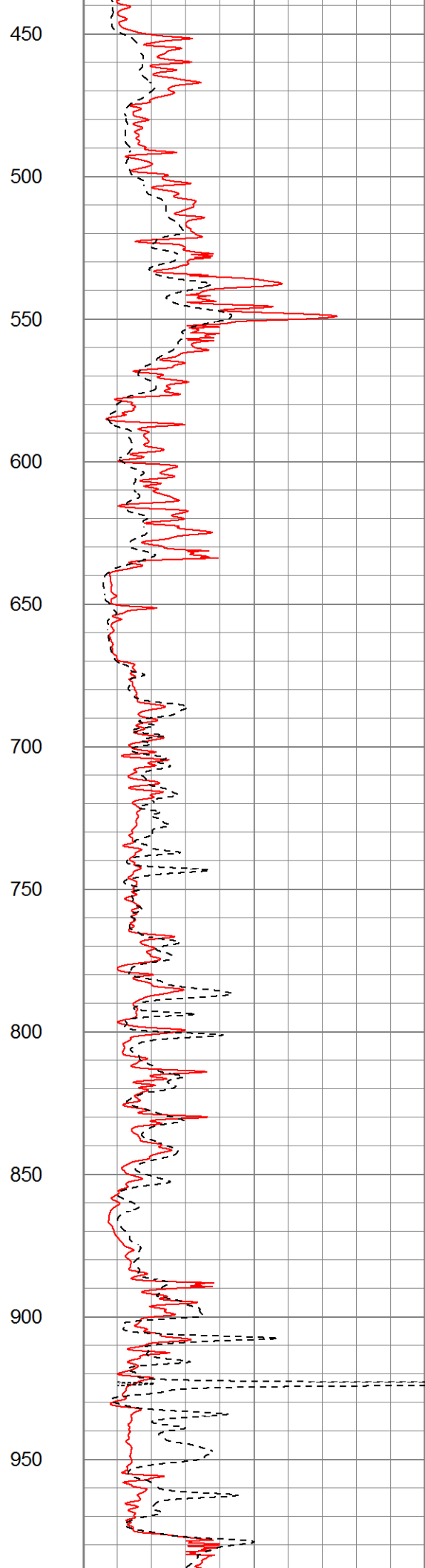
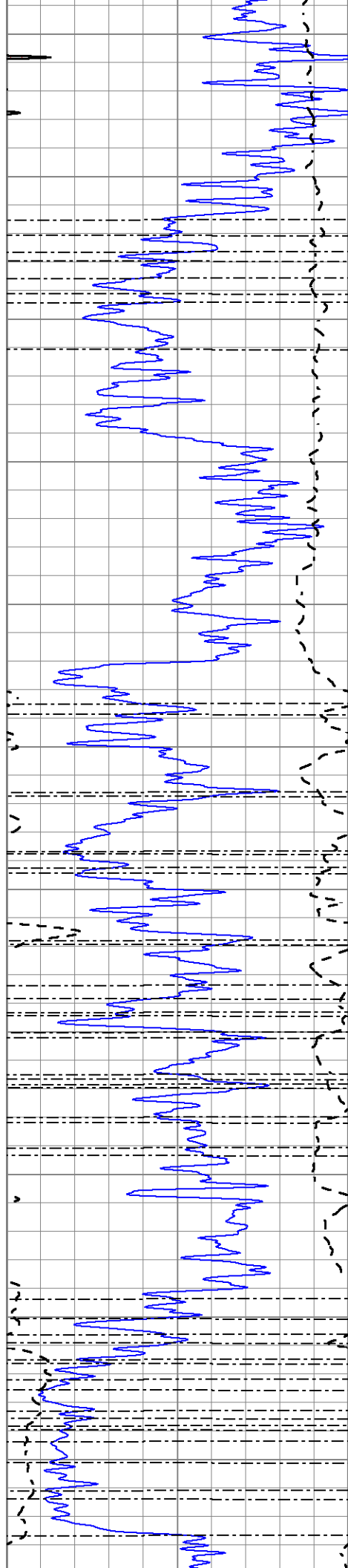
MAIN SECTION

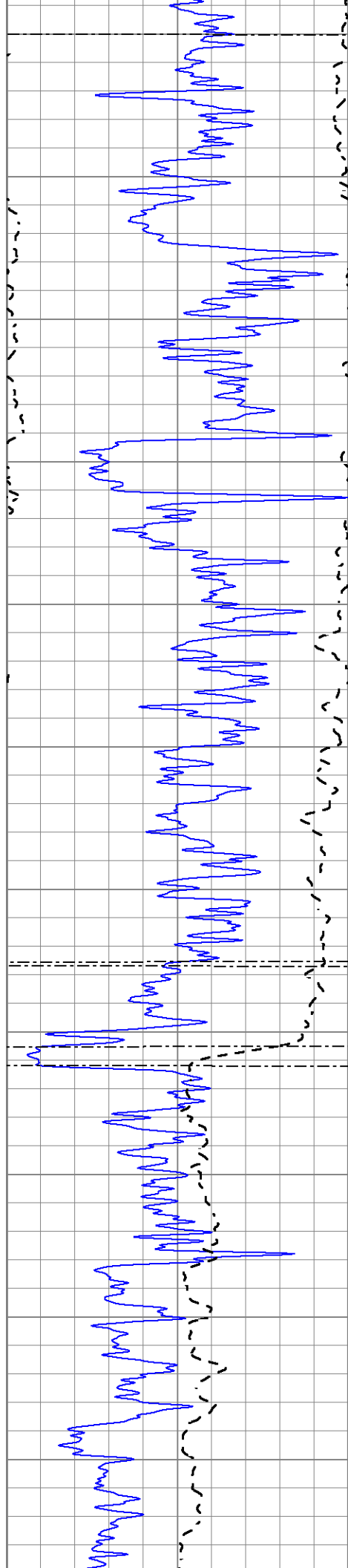
Database File 6269ddn.db
 Dataset Pathname pass3.1M
 Presentation Format _dil2
 Dataset Creation Wed Mar 23 12:20:29 2022
 Charted by Depth in Feet scaled 1:600

0	Gamma Ray (GAPI)	150
-100	SP (mV)	100
0	RWA (Ohm-m)	1

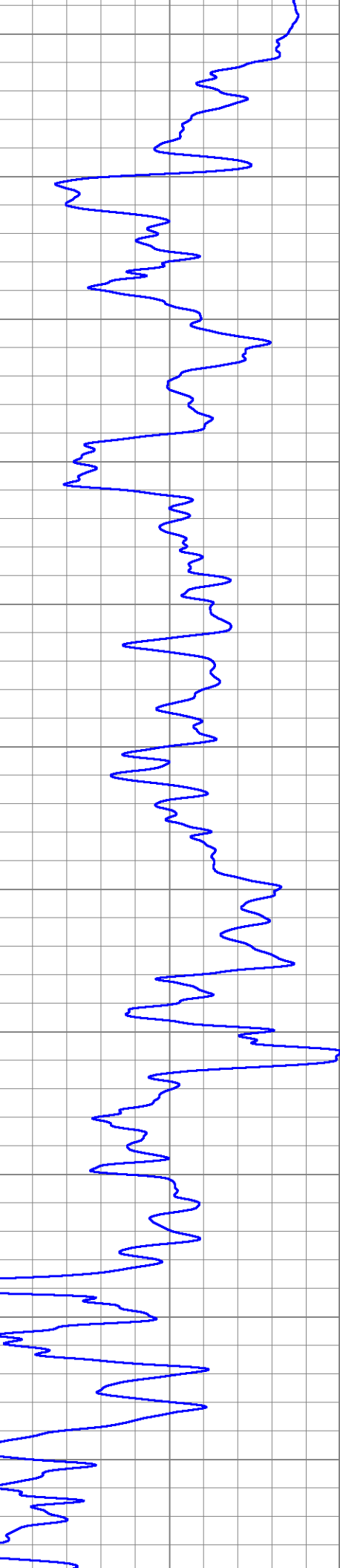
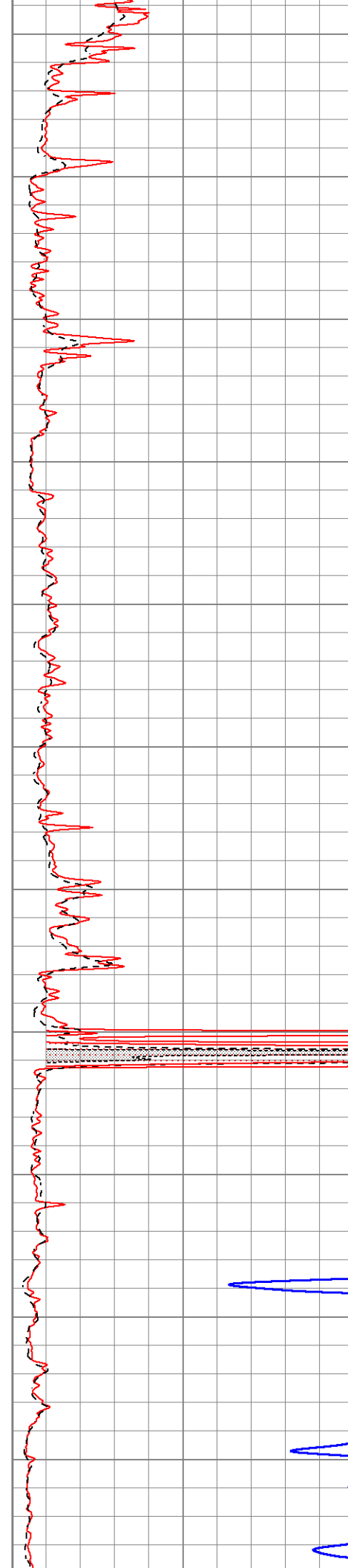
1000	CILD (mmho/m)	0
0	RLL3 (Ohm-m)	50
0	RILD (Ohm-m)	50
50	RILD X10 (Ohm-m)	500
50	RLL3 X10 (Ohm-m)	500

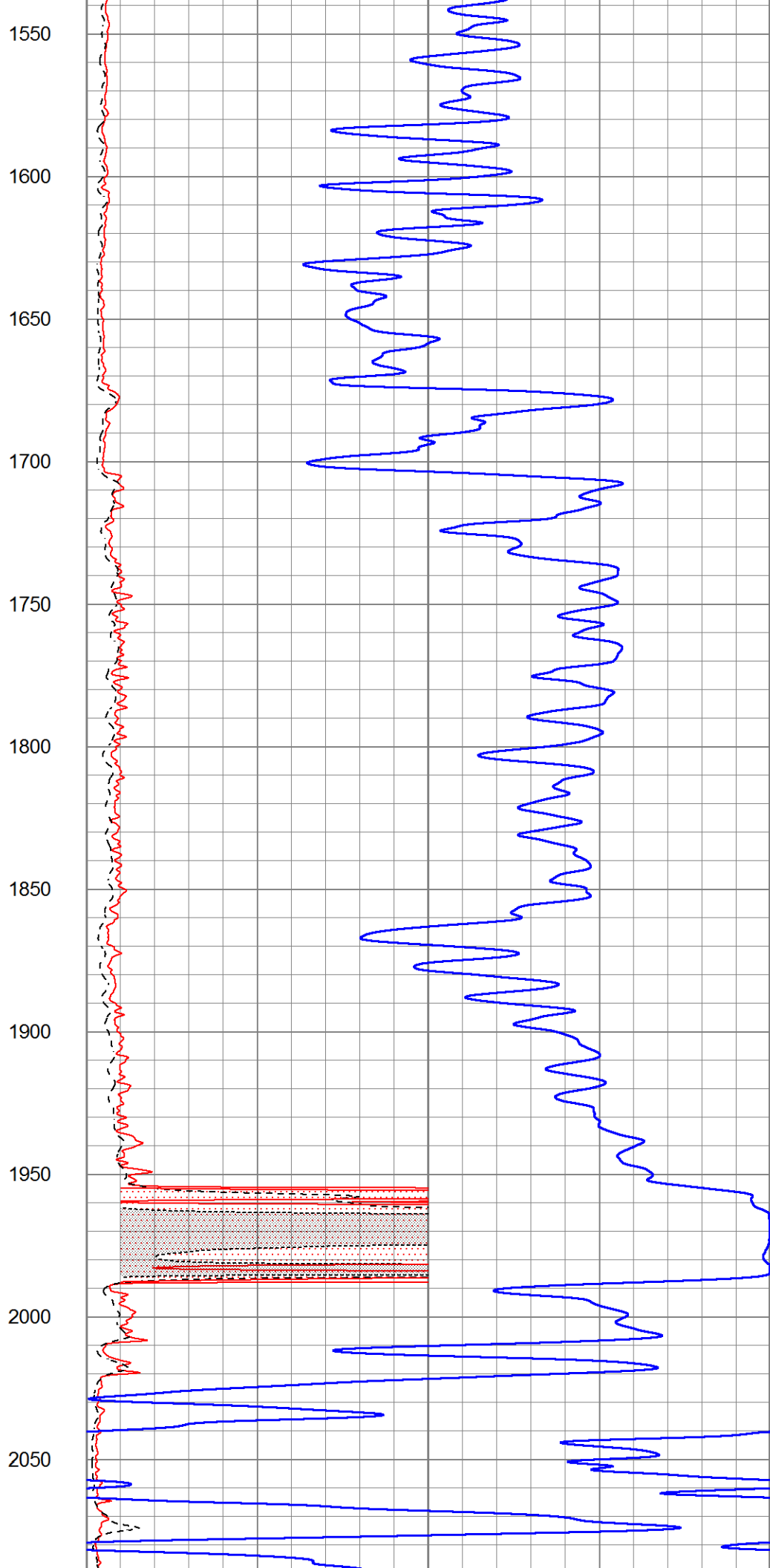
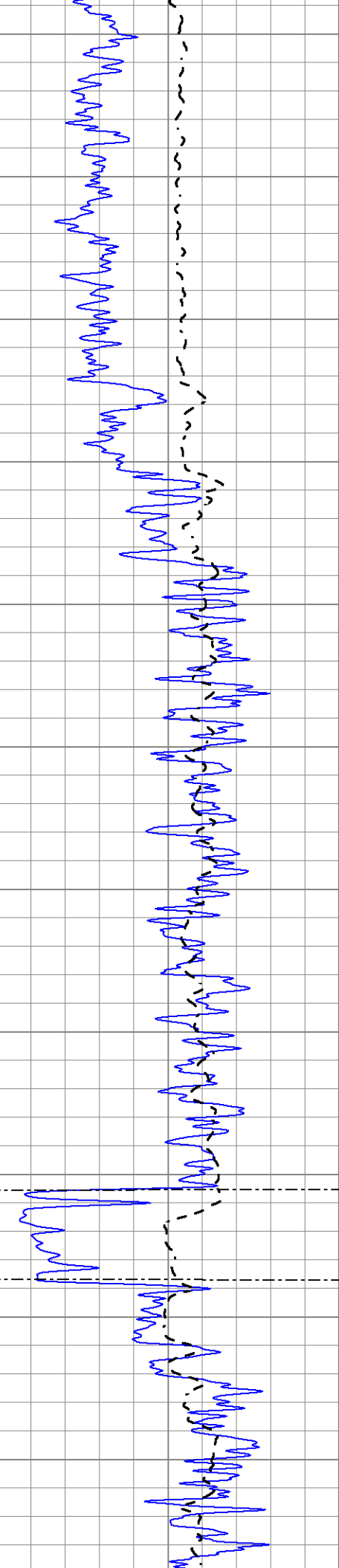


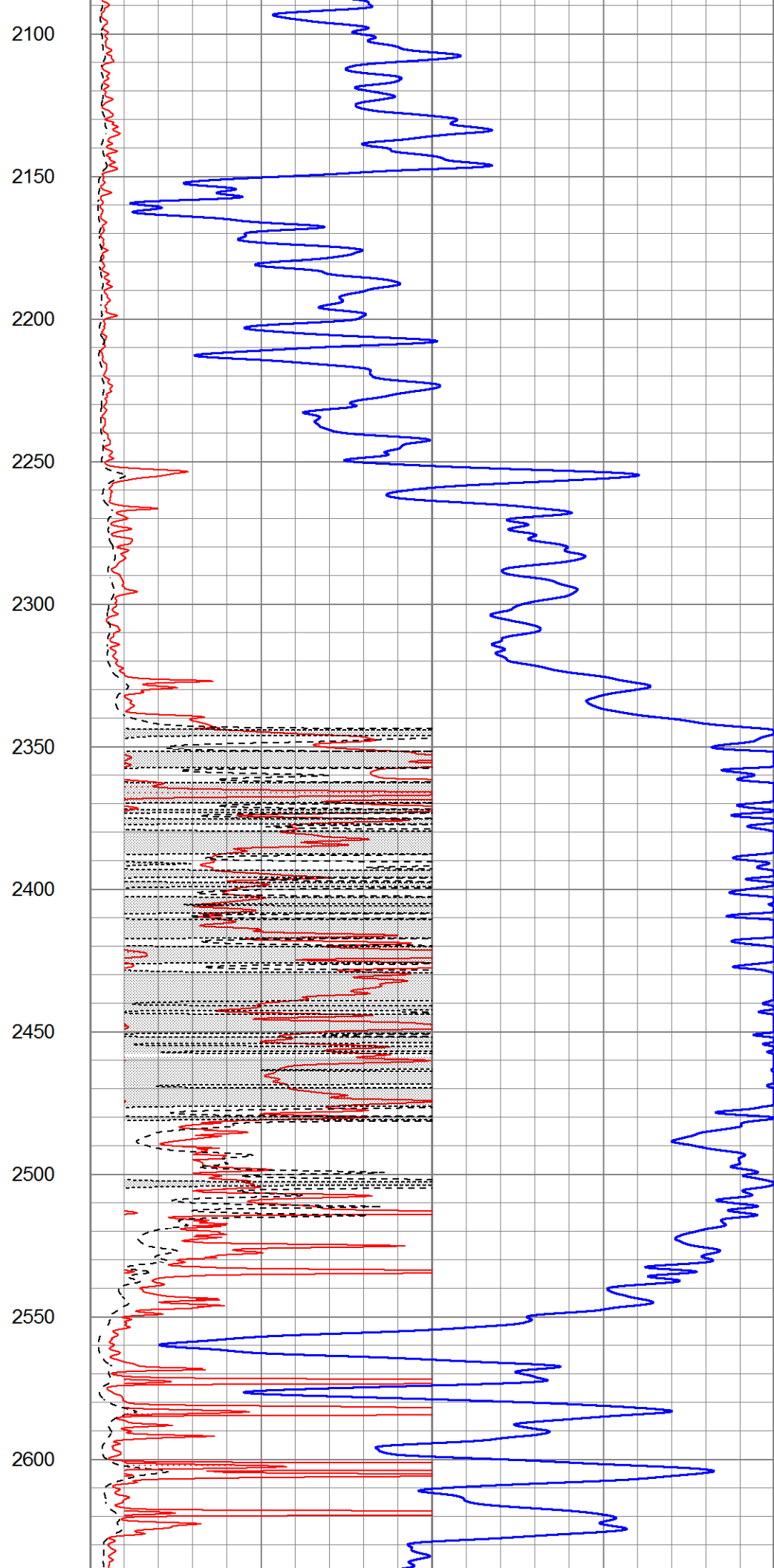
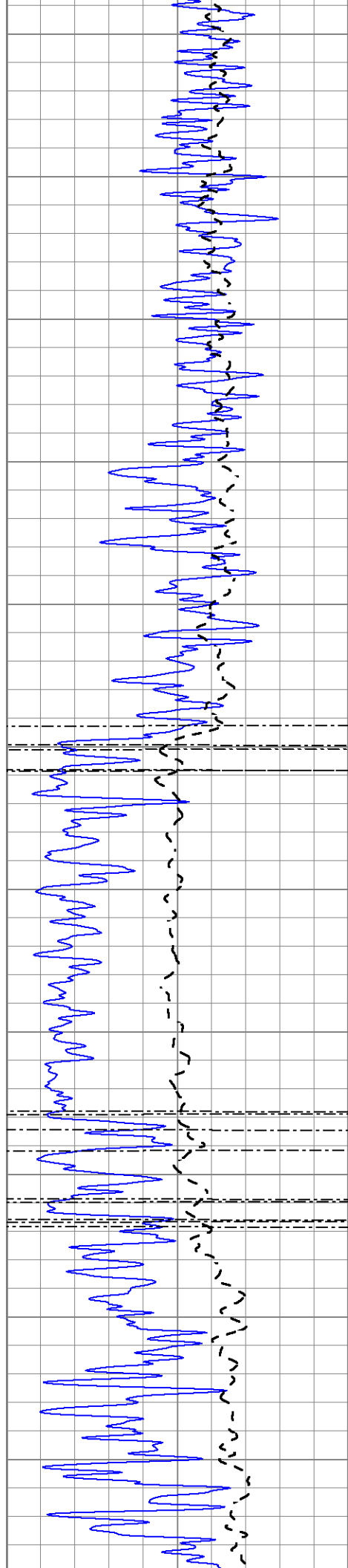


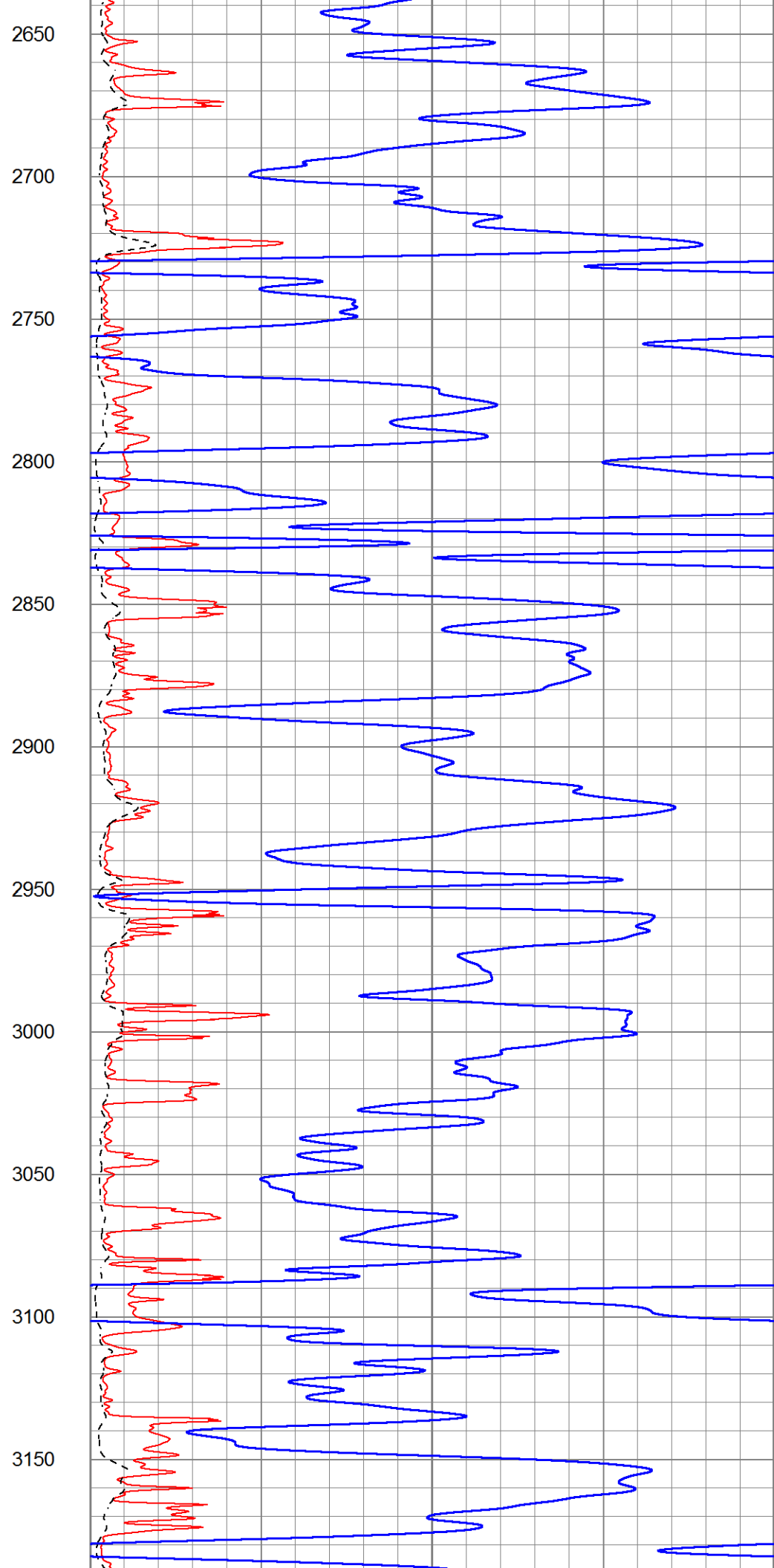
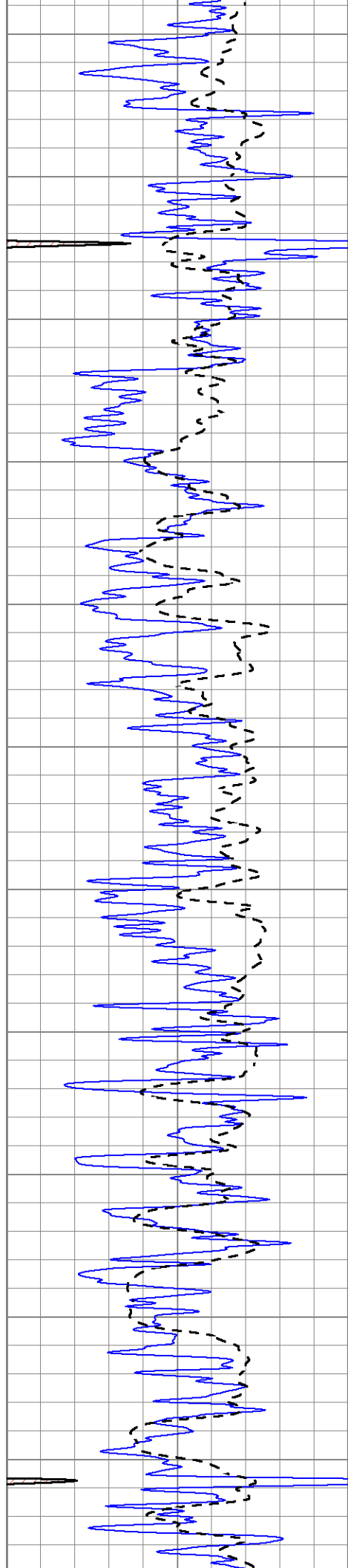


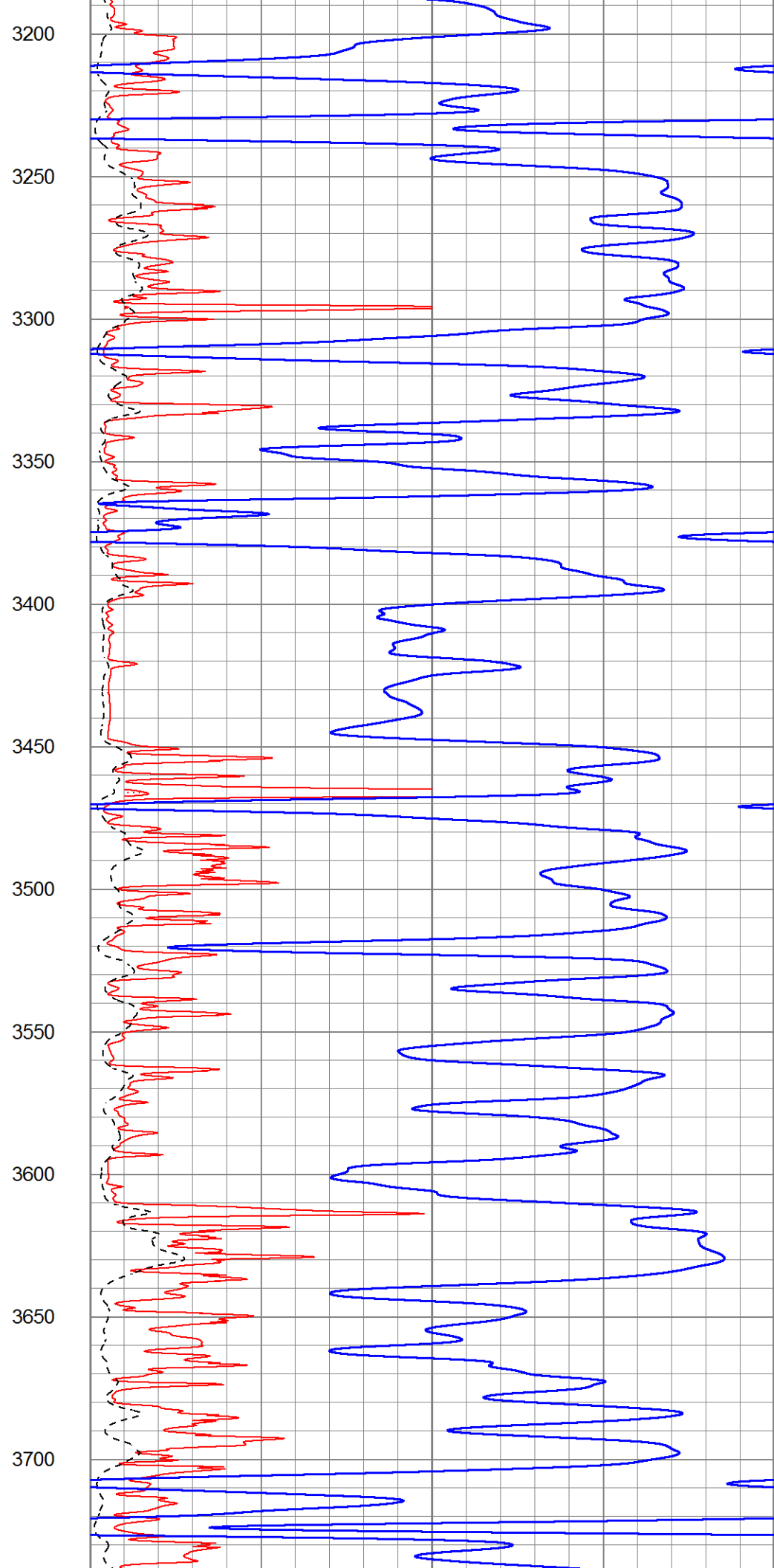
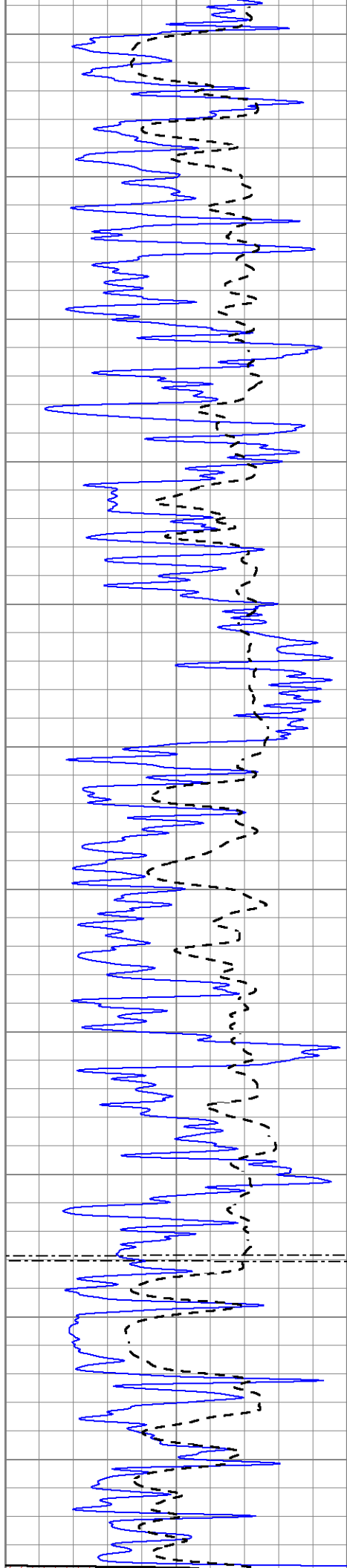
1000
1050
1100
1150
1200
1250
1300
1350
1400
1450
1500

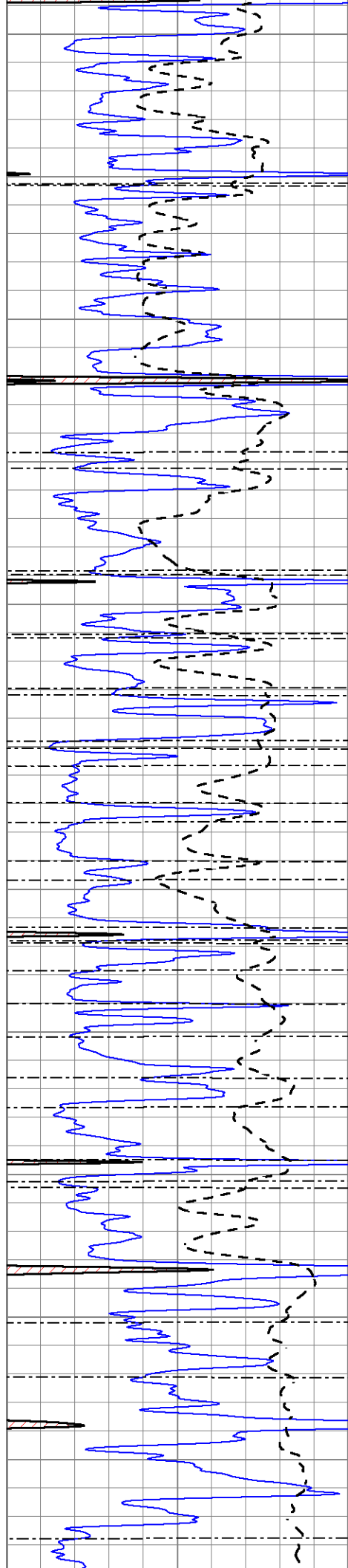












3750

3800

3850

3900

3950

4000

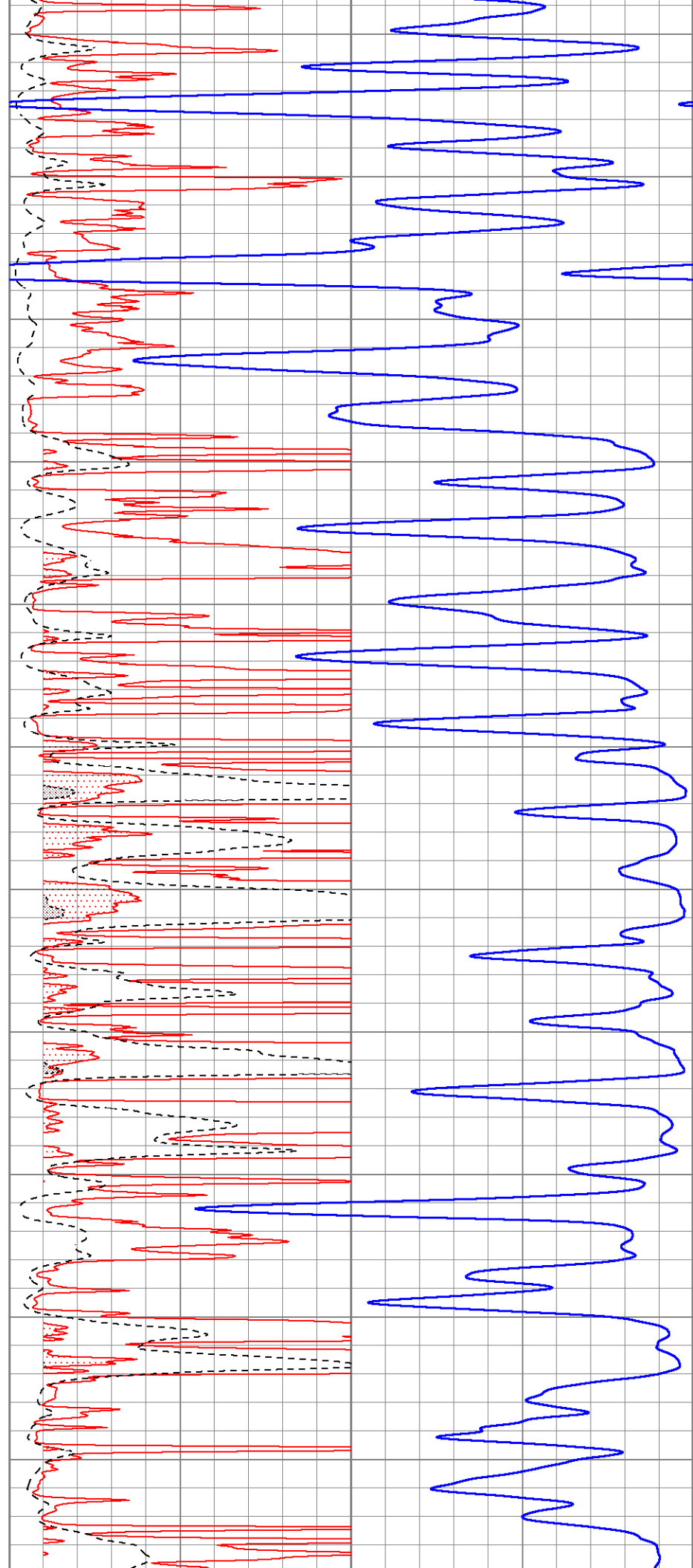
4050

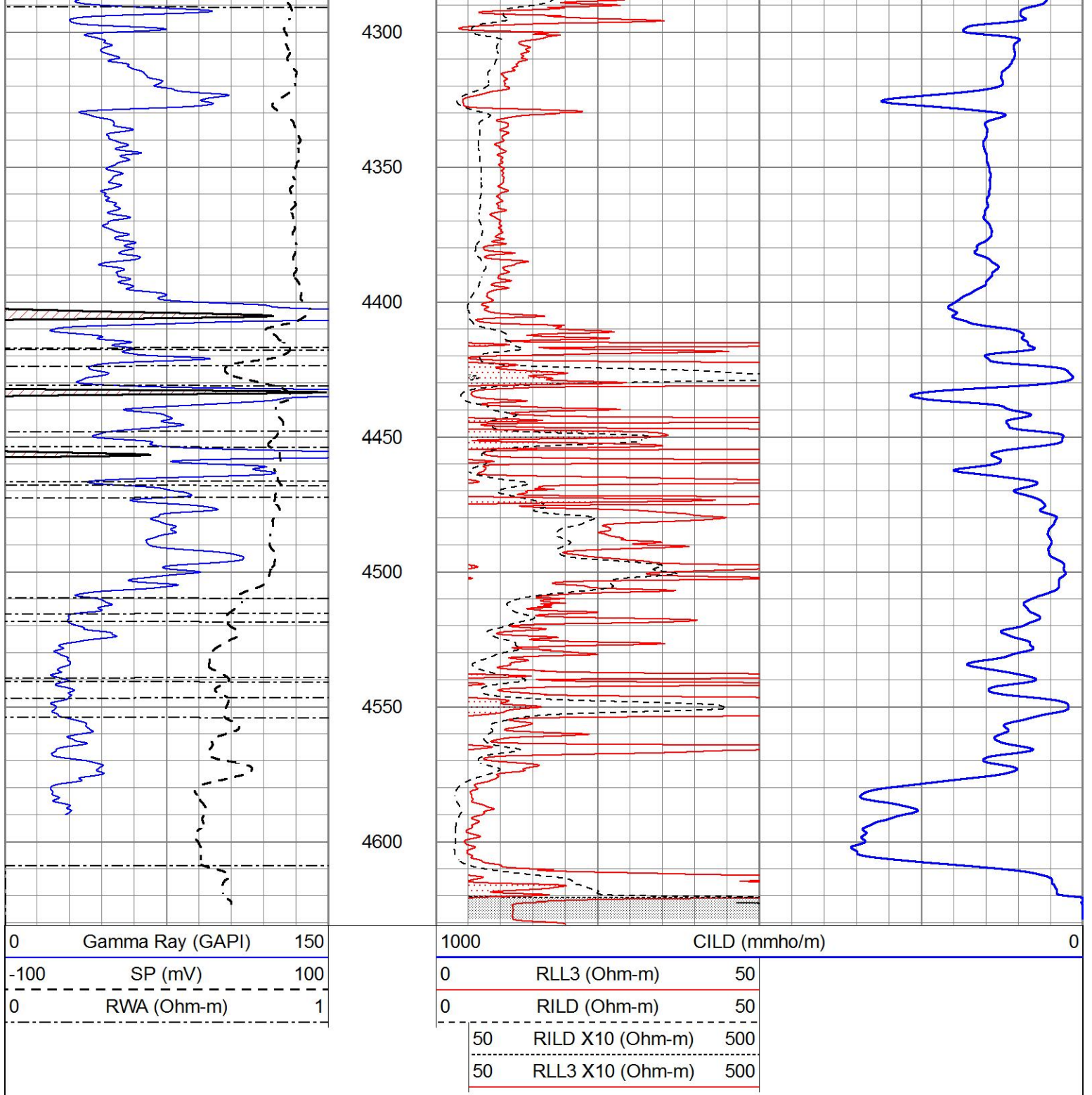
4100

4150

4200

4250



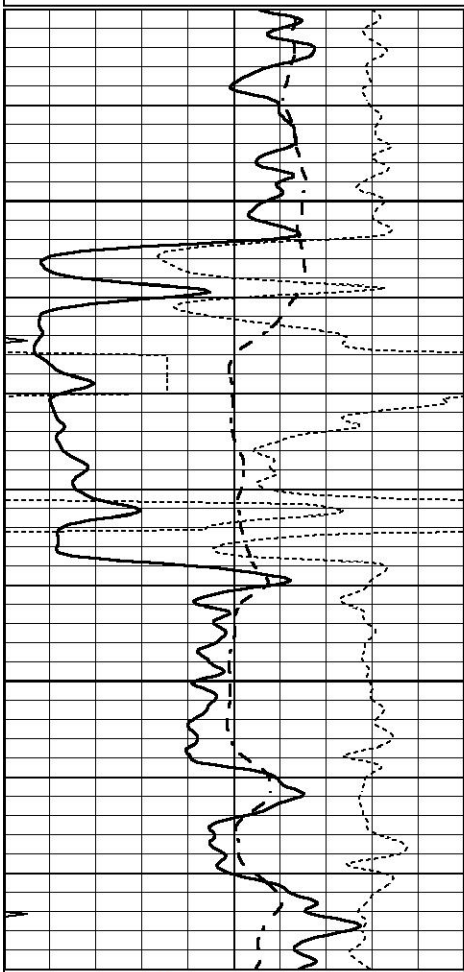


ANHYDRITE

Database File 6269ddn.db
 Dataset Pathname pass3.1A
 Presentation Format _dil
 Dataset Creation Wed Mar 23 12:20:40 2022
 Charted by Depth in Feet scaled 1:240

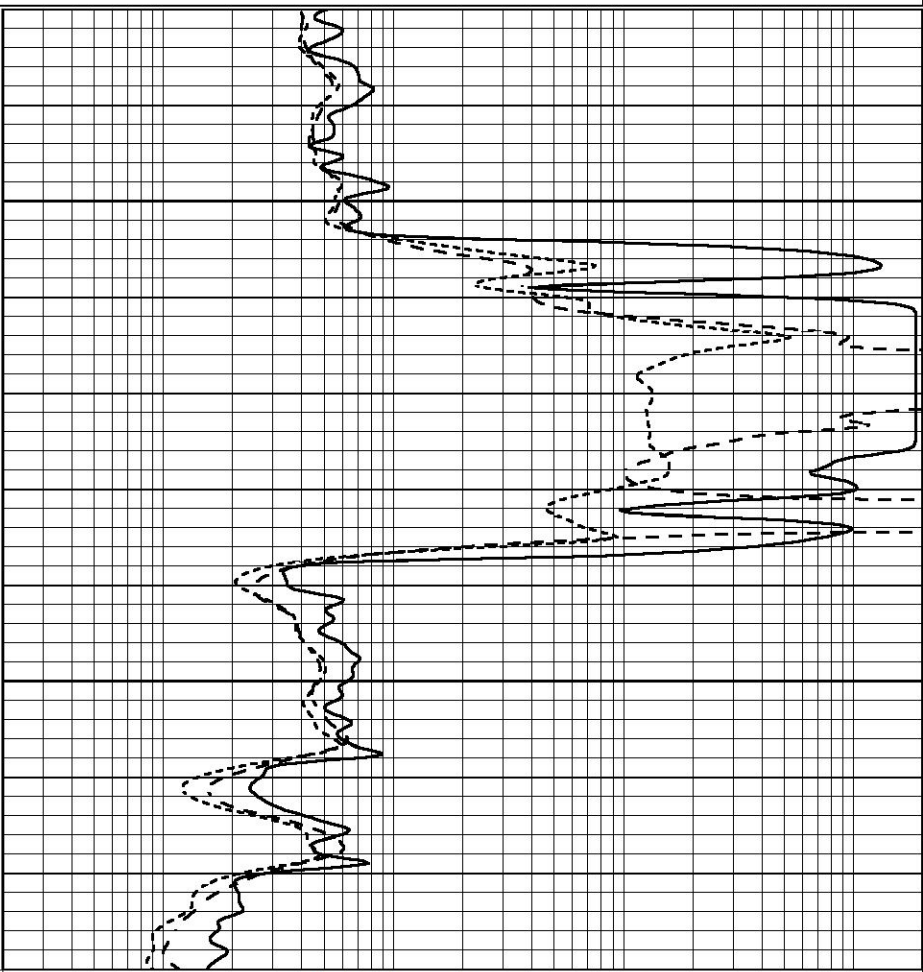
0	GAMMA RAY (GAPI)	150	0.2	SHALLOW GUARD (Ohm-m)	2000
-100	SP (mV)	100	0.2	DEEP INDUCTION (Ohm-m)	2000
-250	Rxo/Rt	50	0.2	MEDIUM INDUCTION (Ohm-m)	2000

0 MINMK 20



0 GAMMA RAY (GAPI) 150
 -100 SP (mV) 100
 -250 Rxo/Rt 50
 0 MINMK 20

0.2 MEDIUM INDUCTION (Ohm-m) 2000



0.2 SHALLOW GUARD (Ohm-m) 2000
 0.2 DEEP INDUCTION (Ohm-m) 2000
 0.2 MEDIUM INDUCTION (Ohm-m) 2000

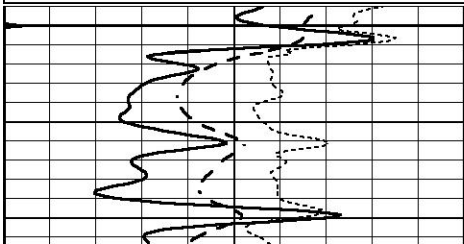


MAIN SECTION

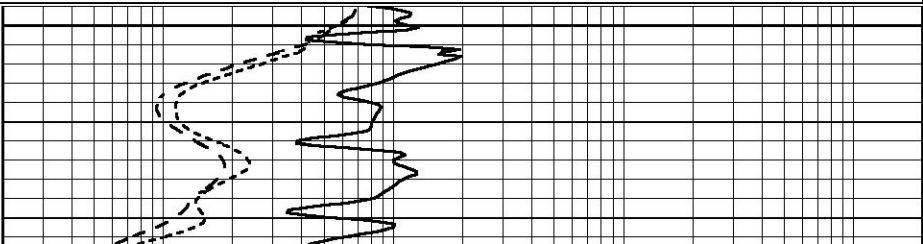
Database File 6269ddn.db
 Dataset Pathname pass3.1M
 Presentation Format _dil
 Dataset Creation Wed Mar 23 12:20:29 2022
 Charted by Depth in Feet scaled 1:240

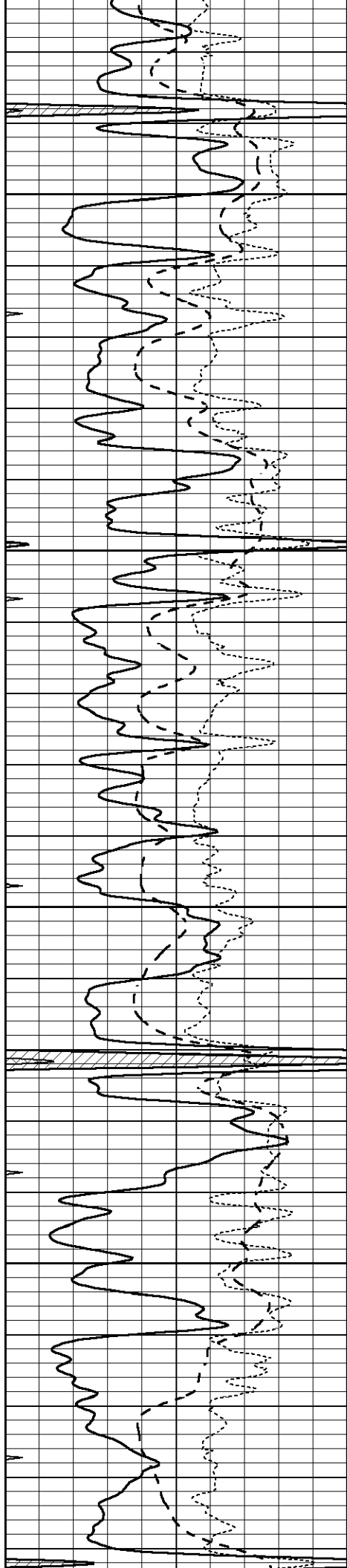
0 GAMMA RAY (GAPI) 150
 -100 SP (mV) 100
 -250 Rxo/Rt 50
 0 MINMK 20

0.2 SHALLOW GUARD (Ohm-m) 2000
 0.2 DEEP INDUCTION (Ohm-m) 2000
 0.2 MEDIUM INDUCTION (Ohm-m) 2000



3700



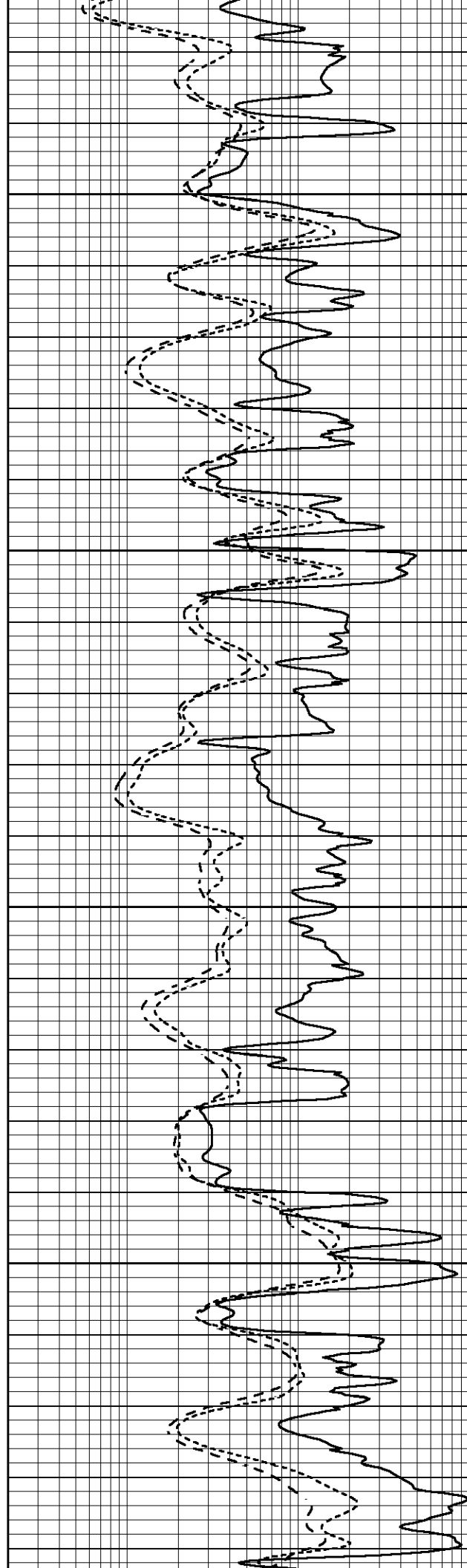


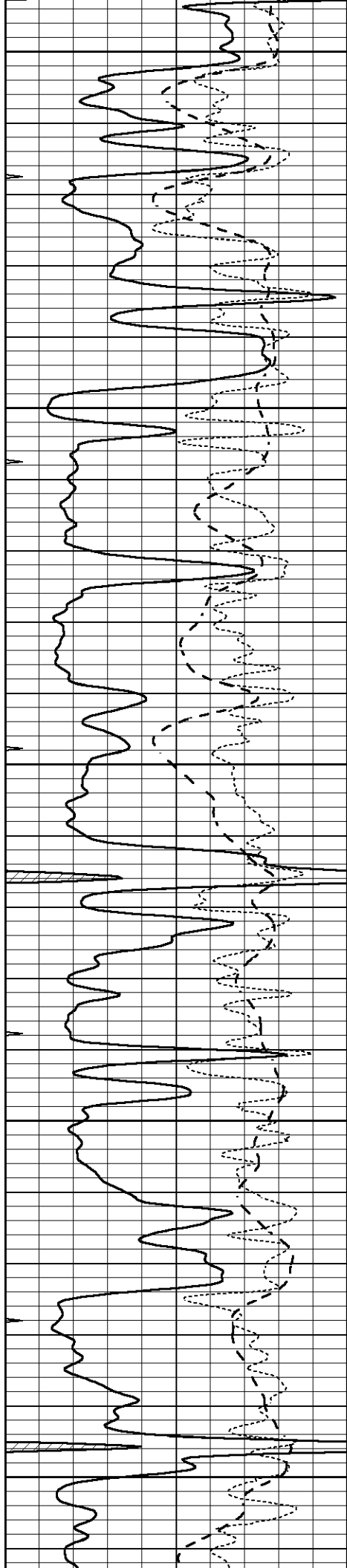
3750

3800

3850

3900





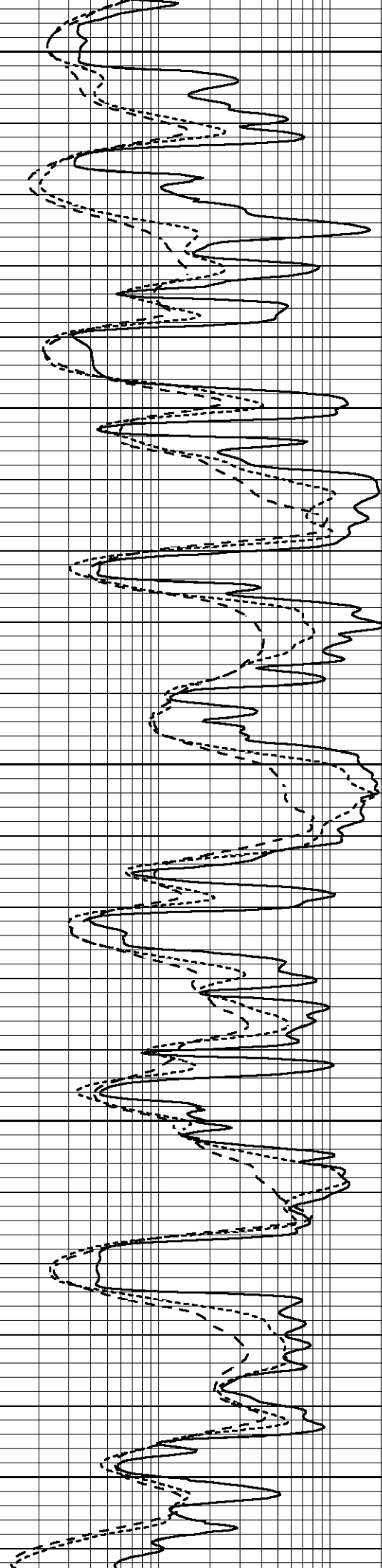
3950

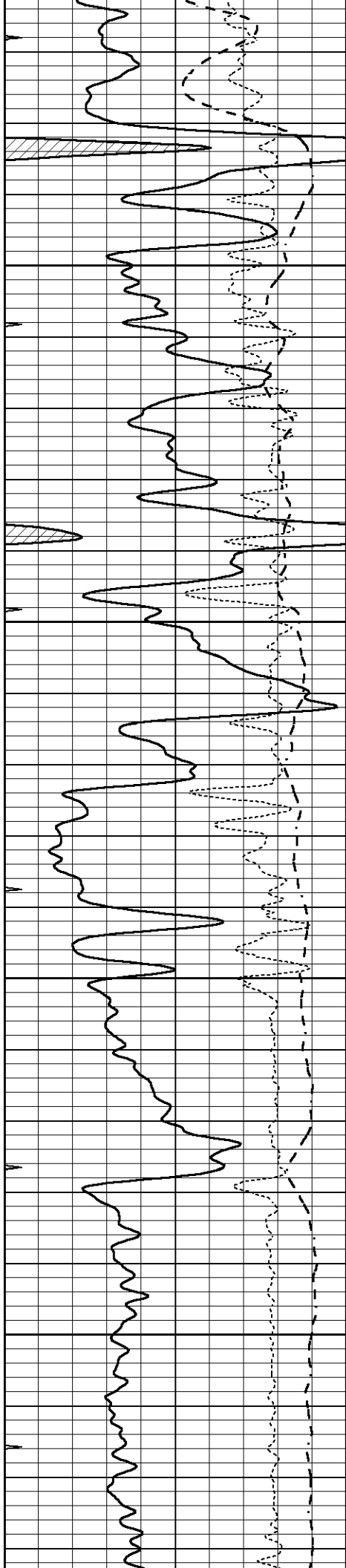
4000

4050

4100

4150



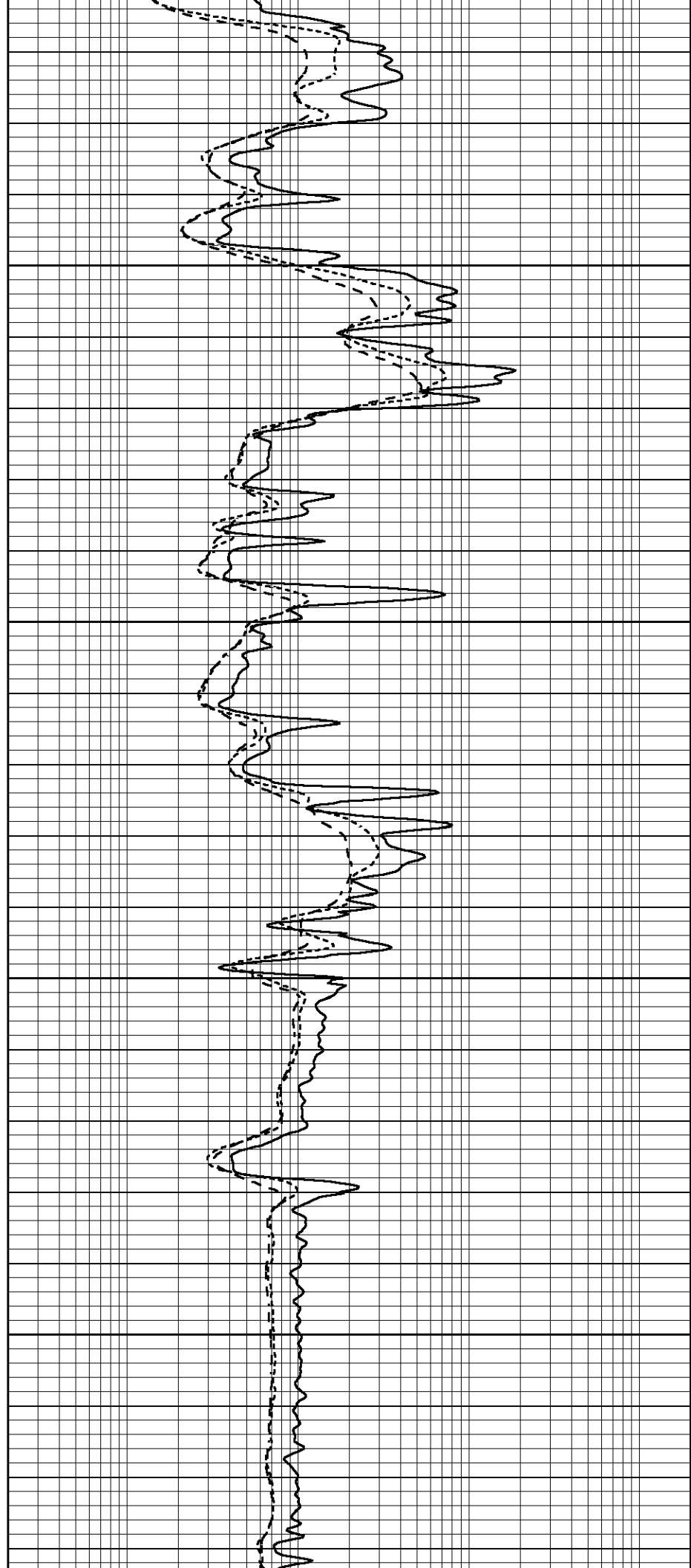


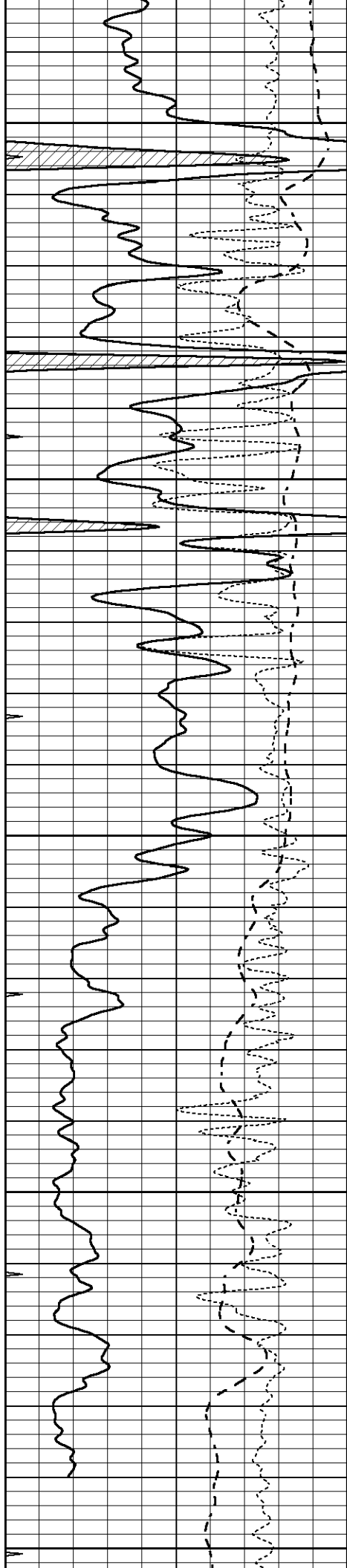
4200

4250

4300

4350





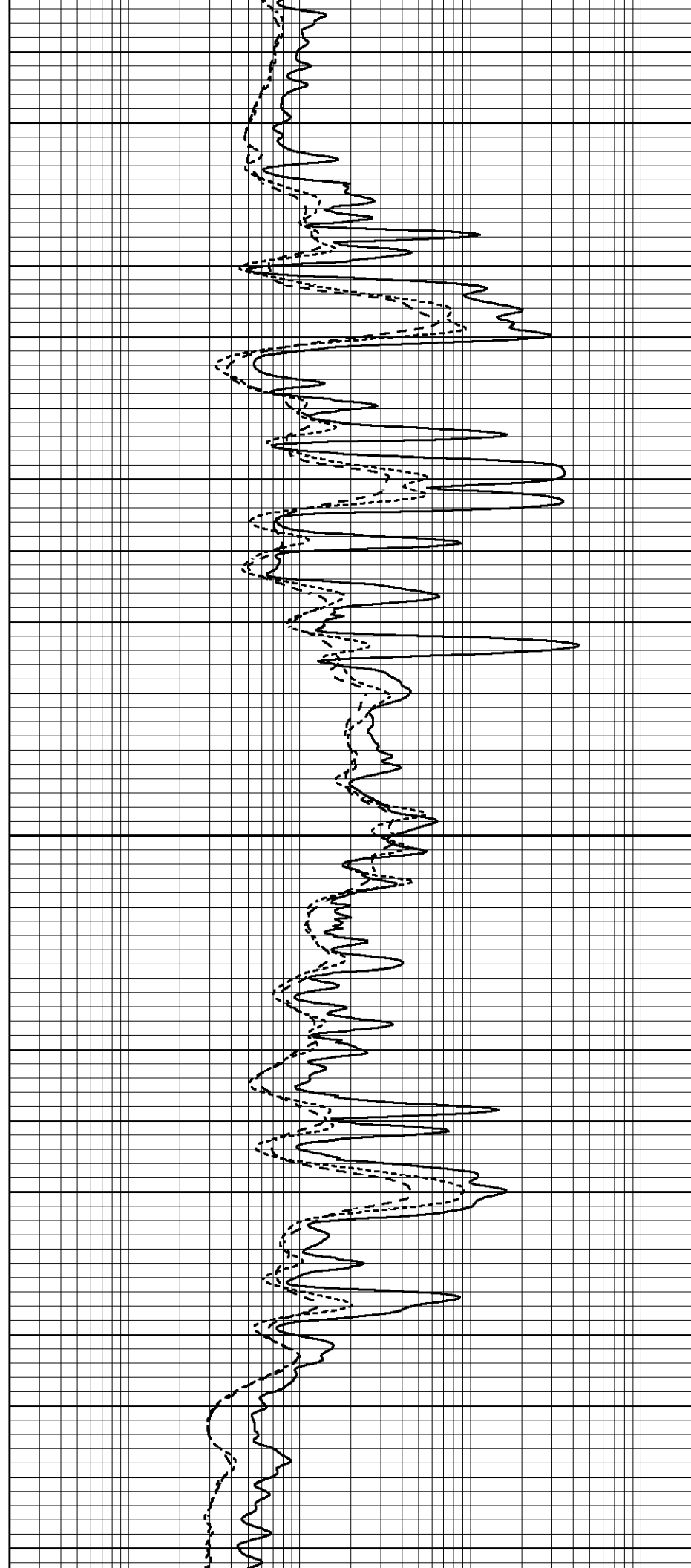
4400

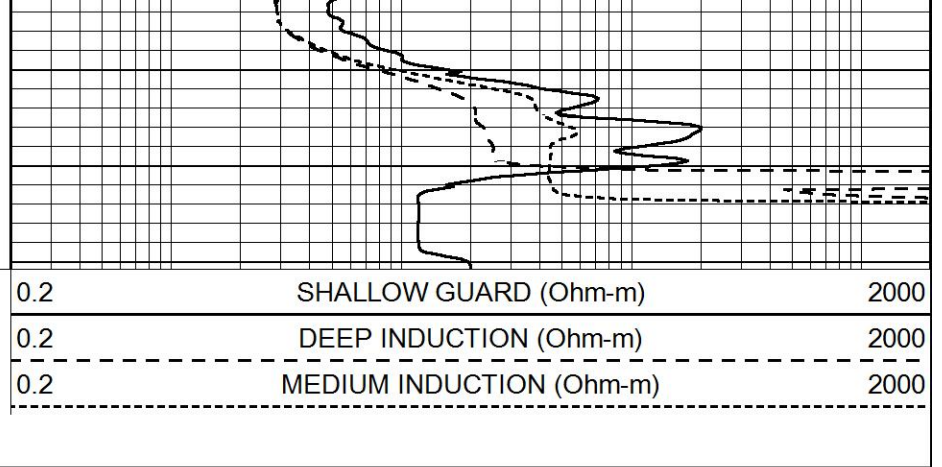
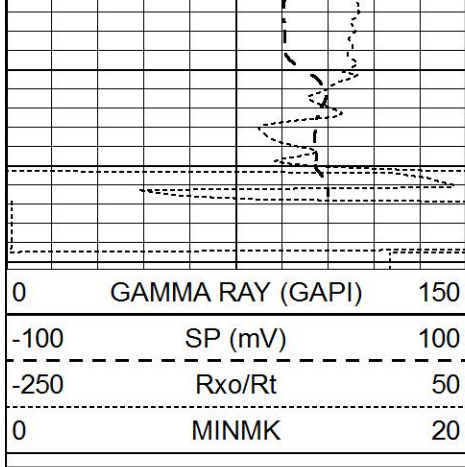
4450

4500

4550

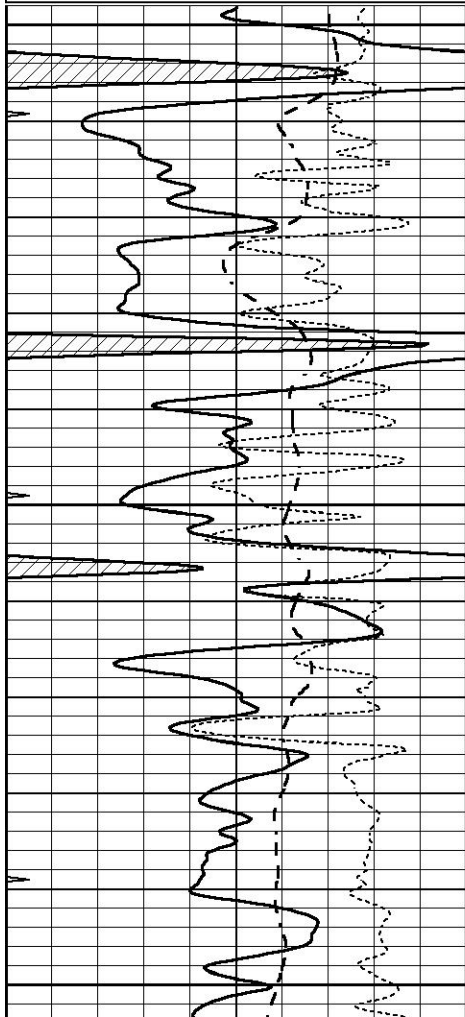
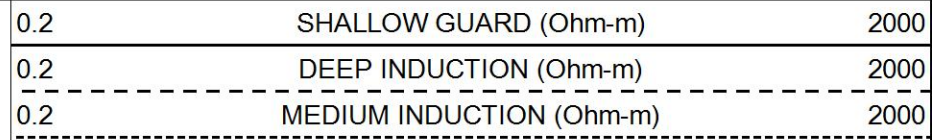
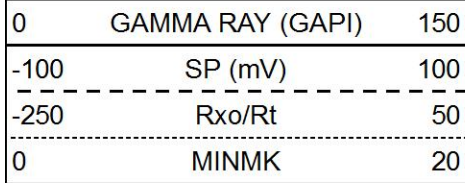
4600





REPEAT SECTION

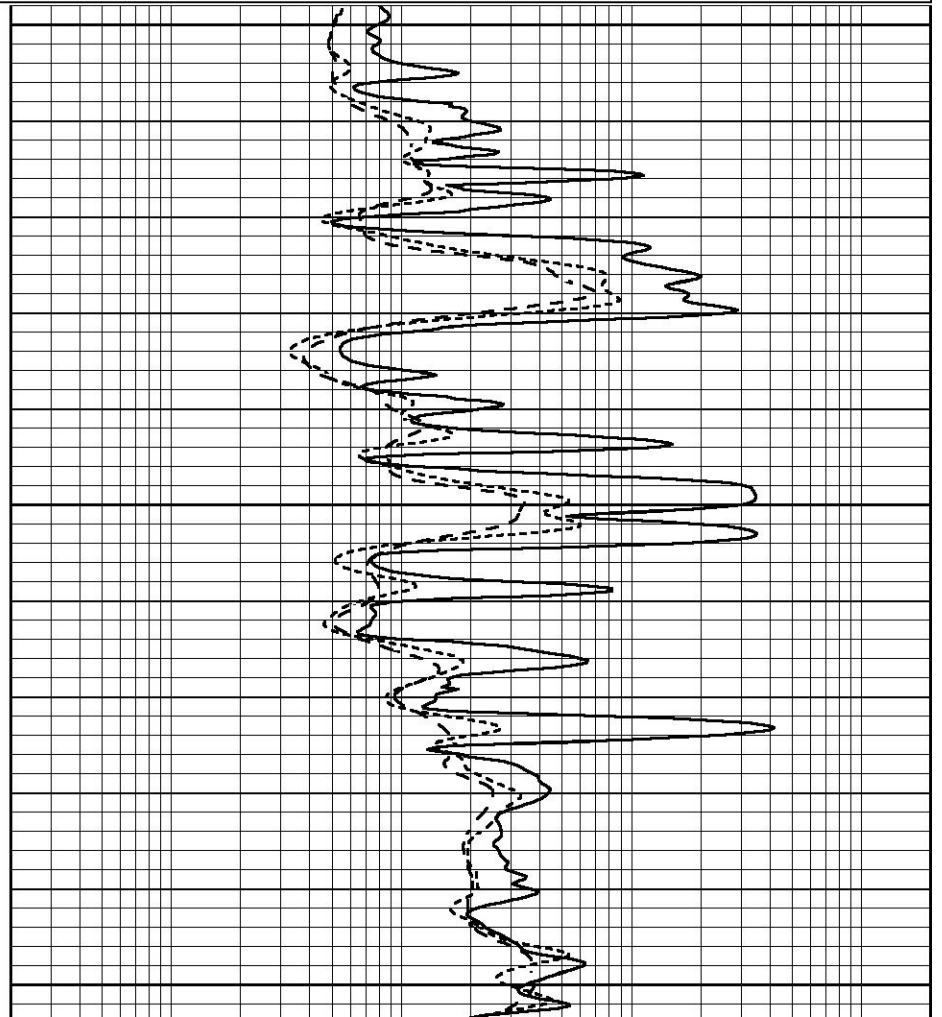
Database File 6269ddn.db
 Dataset Pathname pass2.1R
 Presentation Format _dil
 Dataset Creation Wed Mar 23 12:25:53 2022
 Charted by Depth in Feet scaled 1:240

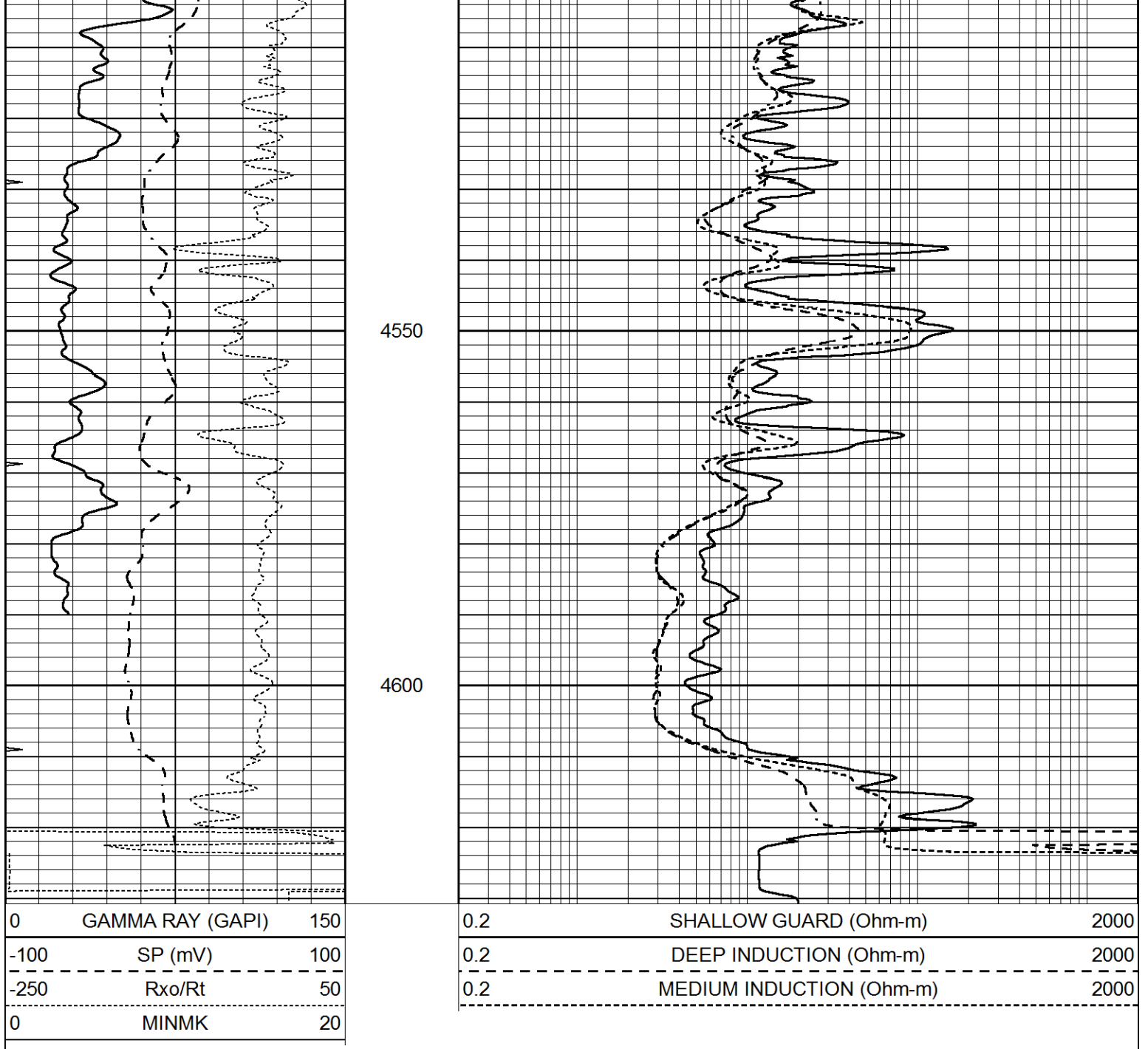


4400

4450

4500





Calibration Report

Database File 6269ddn.db
 Dataset Pathname pass3.1M
 Dataset Creation Wed Mar 23 12:20:29 2022

Dual Induction Calibration Report

Serial-Model: PROBE9-DILG
 Surface Cal Performed: Wed Mar 23 10:31:45 2022
 Downhole Cal Performed: Wed Mar 11 11:31:19 2020
 After Survey Verification Performed: Wed Mar 11 11:31:22 2020

Surface Calibration

Loop:	Readings			V	References		Results	
	Air	Loop			Air	Loop	m	b
Deep	-0.014	0.629		V	0.000	400.000 mmho/m	720.000	-15.000
Medium	0.039	0.728		V	0.000	464.000 mmho/m	720.000	-25.000

Internal:	Zero	Cal		Zero	Cal		m	b
Deep	0.011	0.610	V	0.000	400.000	mmho/m	667.135	-7.256
Medium	0.005	0.712	V	0.000	464.000	mmho/m	655.677	-3.102

Downhole Calibration								
	Readings			References			Results	
	Zero	Cal		Zero	Cal		m'	b'
Deep	0.000	0.000	mmho/m	14.508	388.384	mmho/m	1.000	0.000
Medium	0.000	0.000	mmho/m	166.367	504.400	mmho/m	1.000	0.000
LL3		7.500	V		1400.000	Ohm-m		
		0.000	V		20.000	Ohm-m		
		-7.200	V		4000.000	mmho-m		

After Survey Verification								
	Readings			Targets			Results	
	Zero	Cal		Zero	Cal		m'	b'
Deep	0.000	0.000	mmho/m	0.000	0.000	mmho/m	0.000	0.000
Medium	0.000	0.000	mmho/m	0.000	0.000	mmho/m	0.000	0.000
LL3		1.000	Ohm-m		1.000	Ohm-m		
		0.000	Ohm-m		0.000	Ohm-m		
		1.000	mmho-m		1.000	mmho-m		

Litho Density Calibration Report
Serial: 004 Model: PRB

Master Calibration		Performed Tue May 18 11:02:48 2021						
	Background	Magnesium	Aluminum	Aluminum+Fe				
Window 1	1187.1	10004.0	3142.5	2810.8			cps	
Window 2	1084.9	8556.6	2749.3	2502.4			cps	
Window 3	923.1	5129.8	1819.8	1719.3			cps	
Window 4	263.5	263.6	259.7	262.8			cps	
Long Space	0.0	7471.7	1664.4	1417.5			cps	
Short Space	1.5	984.9	645.6	561.2			cps	
Rho		1.7100	2.5900	0.0000			g/cc	
Pe		2.0000	2.7500	5.7900				
Rib Angle	: 44.3	Rib Slope	: 0.976	Density/Spine Ratio			: 0.564	
Spine Angle	: 74.3	Spine Slope	: 3.555	Spine Intercept			: -15.6	

Before Survey Verification		Performed Wed Dec 31 18:00:00 1969						
Window 1	0.0	0.0	0.0	0.0			cps	
Window 2	0.0	0.0	0.0	0.0			cps	
Window 3	0.0	0.0	0.0	0.0			cps	
Window 4	0.0	0.0	0.0	0.0			cps	
Long Space	0.0	0.0	0.0	0.0			cps	
Short Space	0.0	0.0	0.0	0.0			cps	
Measured Rho		0.0000	0.0000	0.0000			g/cc	
Measured Correction		0.0000	0.0000	0.0000			g/cc	
Measured Pe			0.0000	0.0000				

After Survey Verification		Performed Wed Dec 31 18:00:00 1969						
Window 1	0.0	0.0	0.0	0.0			cps	
Window 2	0.0	0.0	0.0	0.0			cps	
Window 3	0.0	0.0	0.0	0.0			cps	

Window 4	0.0	0.0	0.0	0.0	cps
Long Space	0.0	0.0	0.0	0.0	cps
Short Space	0.0	0.0	0.0	0.0	cps
Measured Rho		0.0000	0.0000	0.0000	g/cc
Measured Correction		0.0000	0.0000	0.0000	g/cc
Measured Pe			0.0000	0.0000	

Compensated Neutron Calibration Report

Serial Number: 070808PMC
Tool Model: NABORS

PRE-SURVEY VERIFICATION

Detector	Readings	Measured	Target
Short Space	cps		
Long Space	cps	pu	pu

POST-SURVEY VERIFICATION

Detector	Readings	Measured	Target
Short Space	cps		
Long Space	cps	pu	pu

Gamma Ray Calibration Report

Serial Number: 070558
Tool Model: OPEN_GR
Performed: Tue Mar 22 20:25:25 2022

Calibrator Value: 1.0 GAPI

Background Reading: 0.0 cps
Calibrator Reading: 1.0 cps

Sensitivity: 0.3000 GAPI/cps