



**COMPENSATED  
DENSITY / NEUTRON  
LOG**

**Company** PALOMINO PETROLEUM, INC.  
**Well** THE DARK KNIGHT #1  
**Field** ARNOLD NORTH  
**County** NESS **State** KANSAS

**Location:** API #: 15-135-26161-0000  
 564' FNL & 137' FEL  
 SE - NE - NE - NE  
 SEC 10 TWP 16S RGE 25W  
**Permanent Datum** GROUND LEVEL **Elevation** 2551  
**Log Measured From** KELLY BUSHING 11' A.G.L.  
**Drilling Measured From** KELLY BUSHING  
**Other Services** DILMEL  
**Elevation** K.B. 2562  
 D.F. 2560  
 G.L. 2551

<b>Date</b>	3/23/22	
<b>Run Number</b>	TWO	
<b>Depth Driller</b>	4625	
<b>Depth Logger</b>	4625	
<b>Bottom Logged Interval</b>	4623	
<b>Top Log Interval</b>	3700	
<b>Casing Driller</b>	8 5/8"@259'	
<b>Casing Logger</b>	259	
<b>Bit Size</b>	7 7/8"	
<b>Type Fluid in Hole</b>	CHEMICAL MUD	CHLORIDES 3.500 PPM
<b>Density / Viscosity</b>	9.4/52	
<b>pH / Fluid Loss</b>	10.0/8.0	
<b>Source of Sample</b>	FLOWLINE	
<b>Rm @ Meas. Temp</b>	1.30@60F	
<b>Rmf @ Meas. Temp</b>	.975@60F	
<b>Rmc @ Meas. Temp</b>	1.56@60F	
<b>Source of Rmf / Rmc</b>	MEASUREMENT	
<b>Rm @ BHT</b>	.639@122F	
<b>Time Circulation Stopped</b>	4 HOURS	
<b>Time Logger on Bottom</b>	1230 P.M.	
<b>Maximum Recorded Temperature</b>	122F	
<b>Equipment Number</b>	922339	
<b>Location</b>	HAYS, KANSAS	
<b>Recorded By</b>	JEFF LUEBBERS	COLE ROBBEN
<b>Witnessed By</b>	RYAN SEIB	

<<< Fold Here >>>

All interpretations are opinions based on inferences from electrical or other measurements and we cannot and do not guarantee the accuracy or correctness of any interpretation, and we shall not, except in the case of gross or willful negligence on our part, be liable or responsible for any loss, costs, damages, or expenses incurred or sustained by anyone resulting from any interpretation made by any of our officers, agents or employees. These interpretations are also subject to our general terms and conditions set out in our current Price Schedule.

15-135-26161-0000 Comments

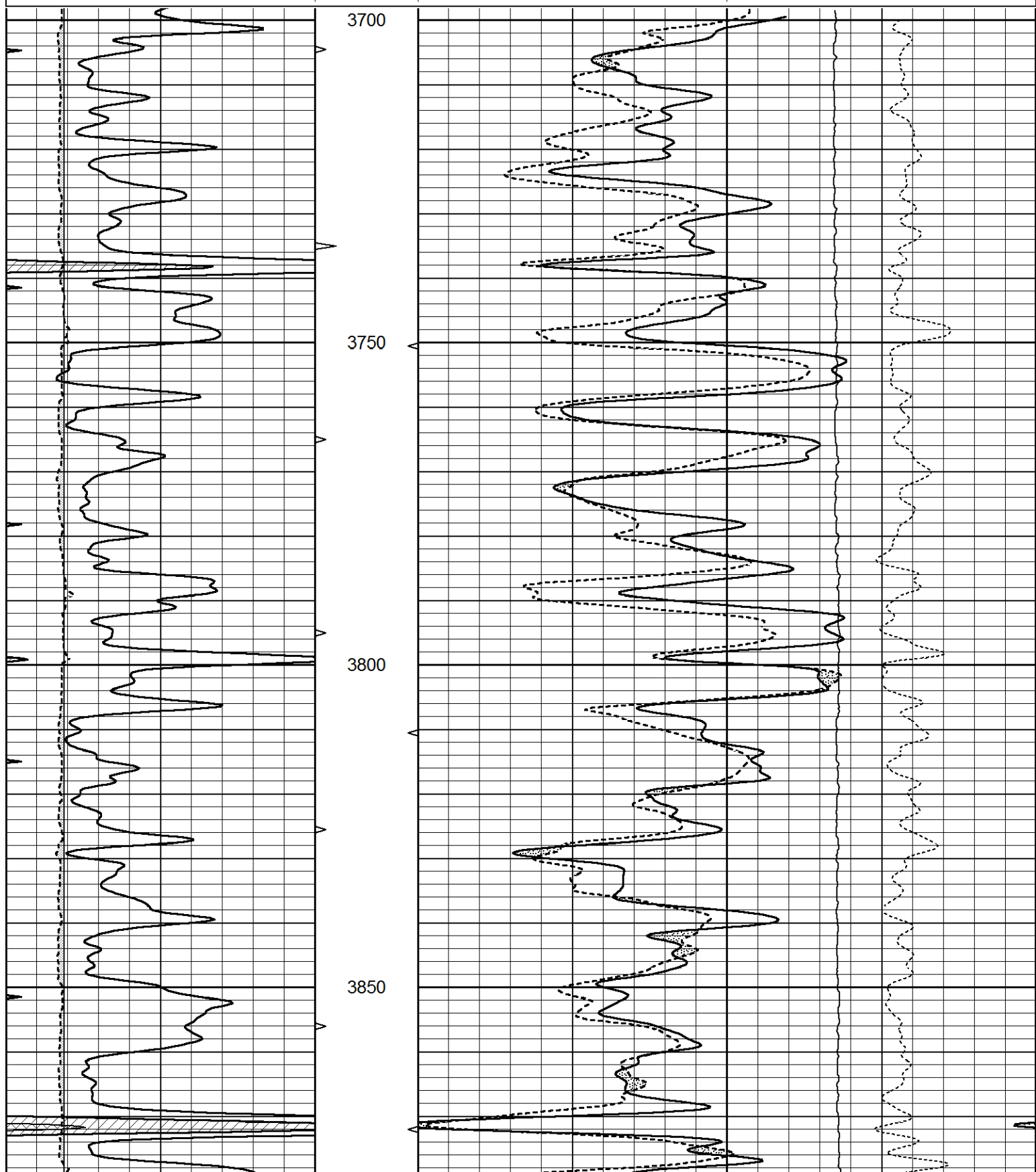
THANK YOU FOR USING ELI WIRELINE HAYS, KANSAS (785) 628-6395  
 DIRECTIONS  
 ARNOLD, KS., W. ON HWY 4 TO "RD. J", 3N., W. INTO

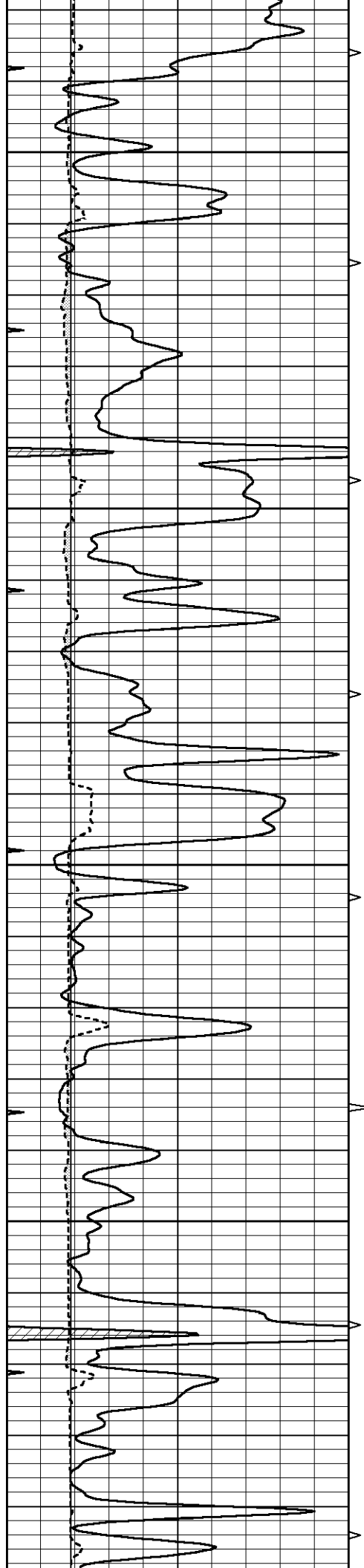


# MAIN SECTION

Database File 6269ddn.db  
 Dataset Pathname pass5.1  
 Presentation Format den\_neu  
 Dataset Creation Wed Mar 23 13:44:18 2022  
 Charted by Depth in Feet scaled 1:240

0	GAMMA RAY (GAPI)	150	ABHV	30	COMPENSATED DENSITY (pu)	-10	
6	DCAL (in)	16	10 (ft3)	0	COMPENSATED NEUTRON (pu)	-10	
0	MINMK	20	TBHV		-0.25 CORRECTION (g/cc)	0.25	
			0 (ft3)	10	0	LTEN (lb)	5000



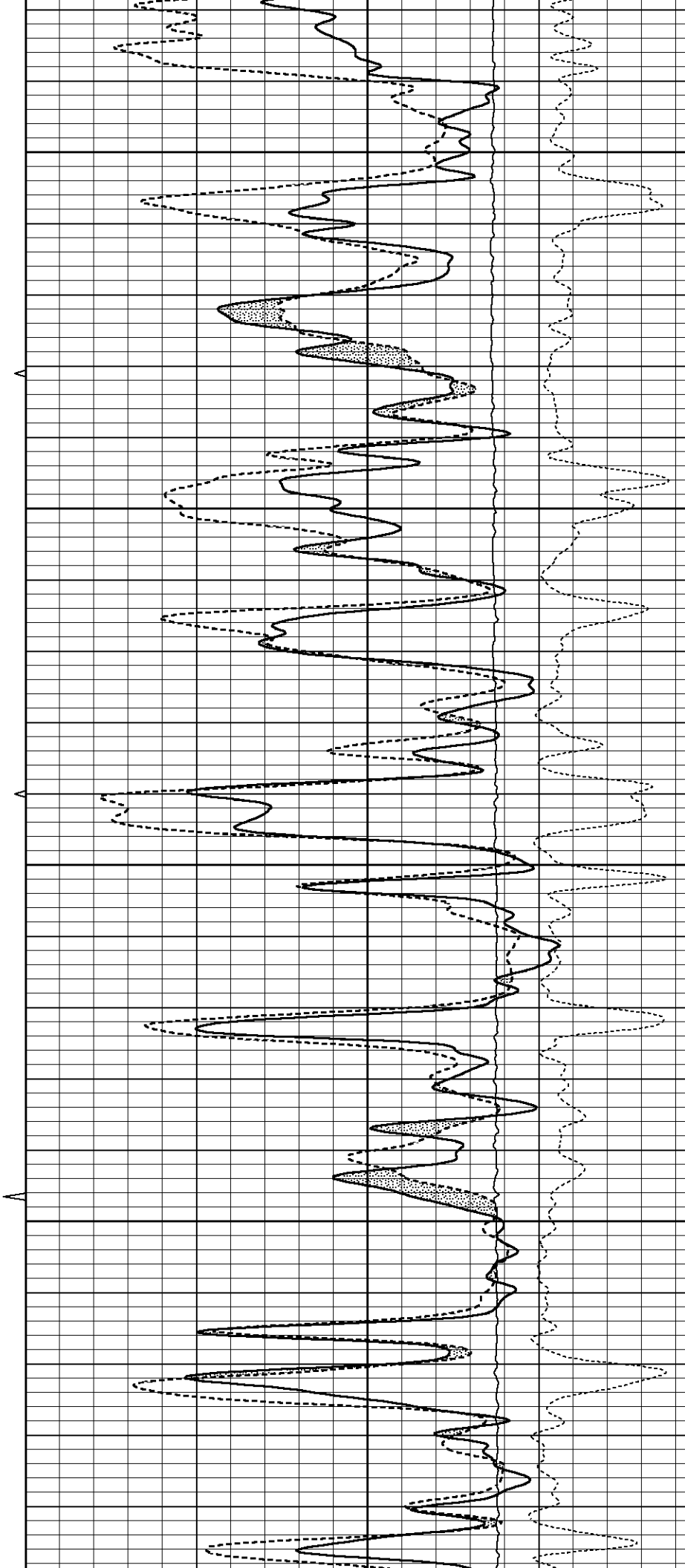


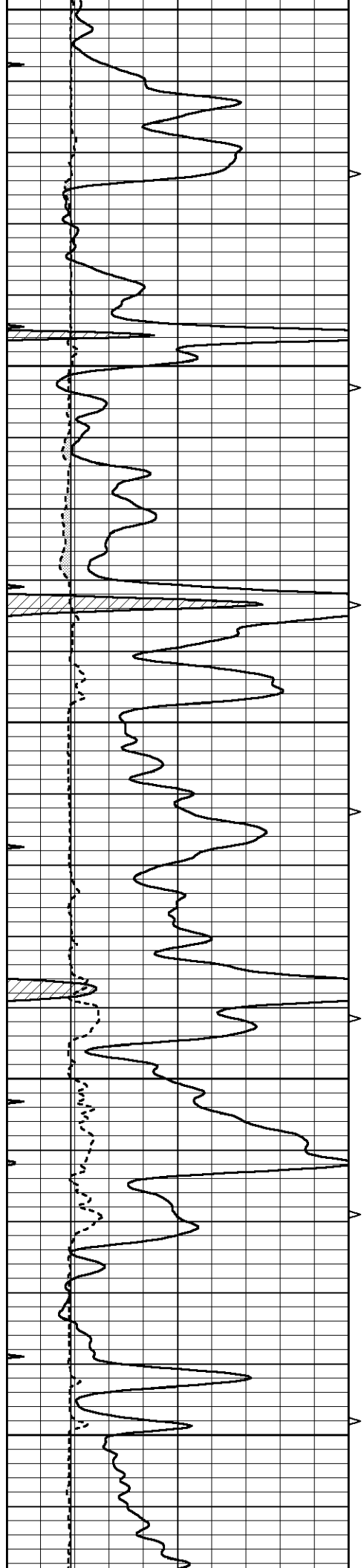
3900

3950

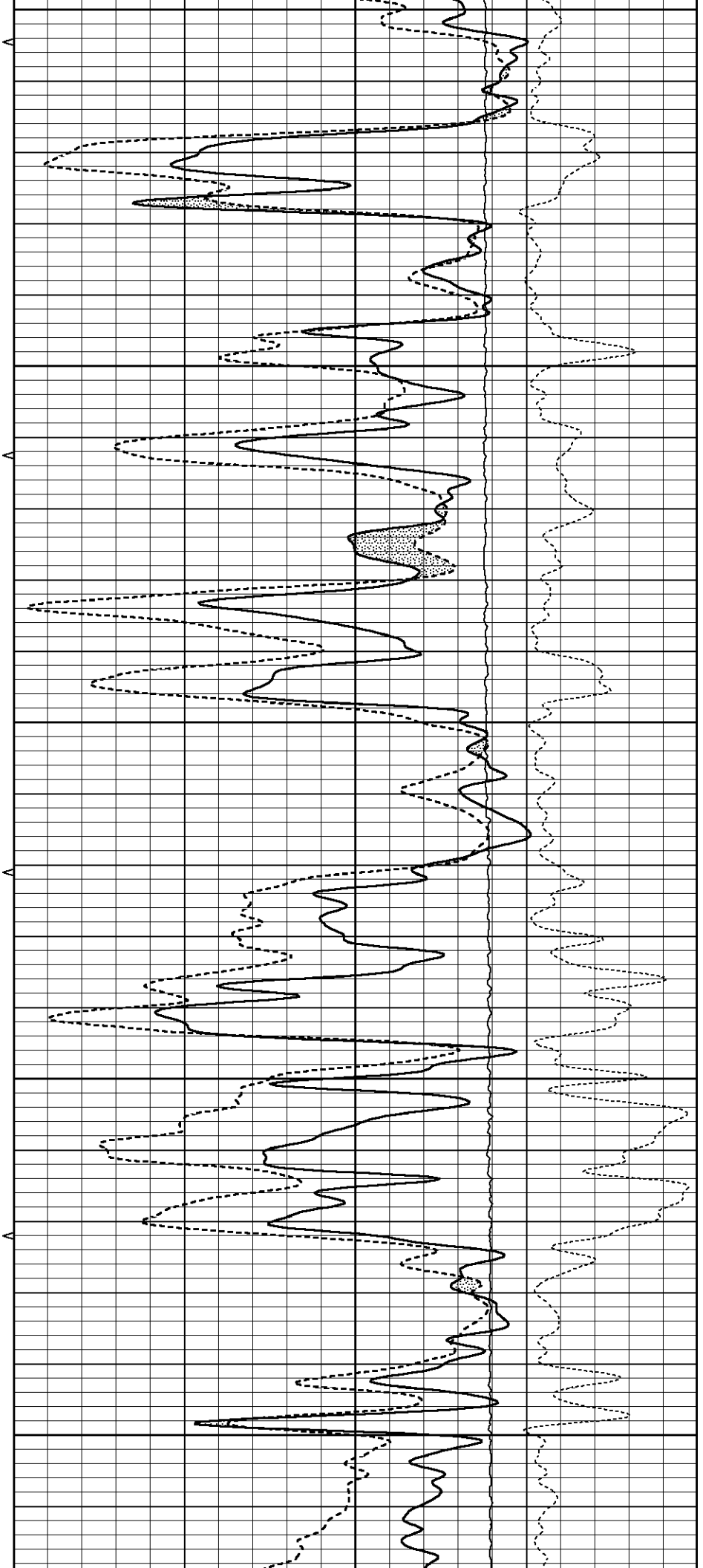
4000

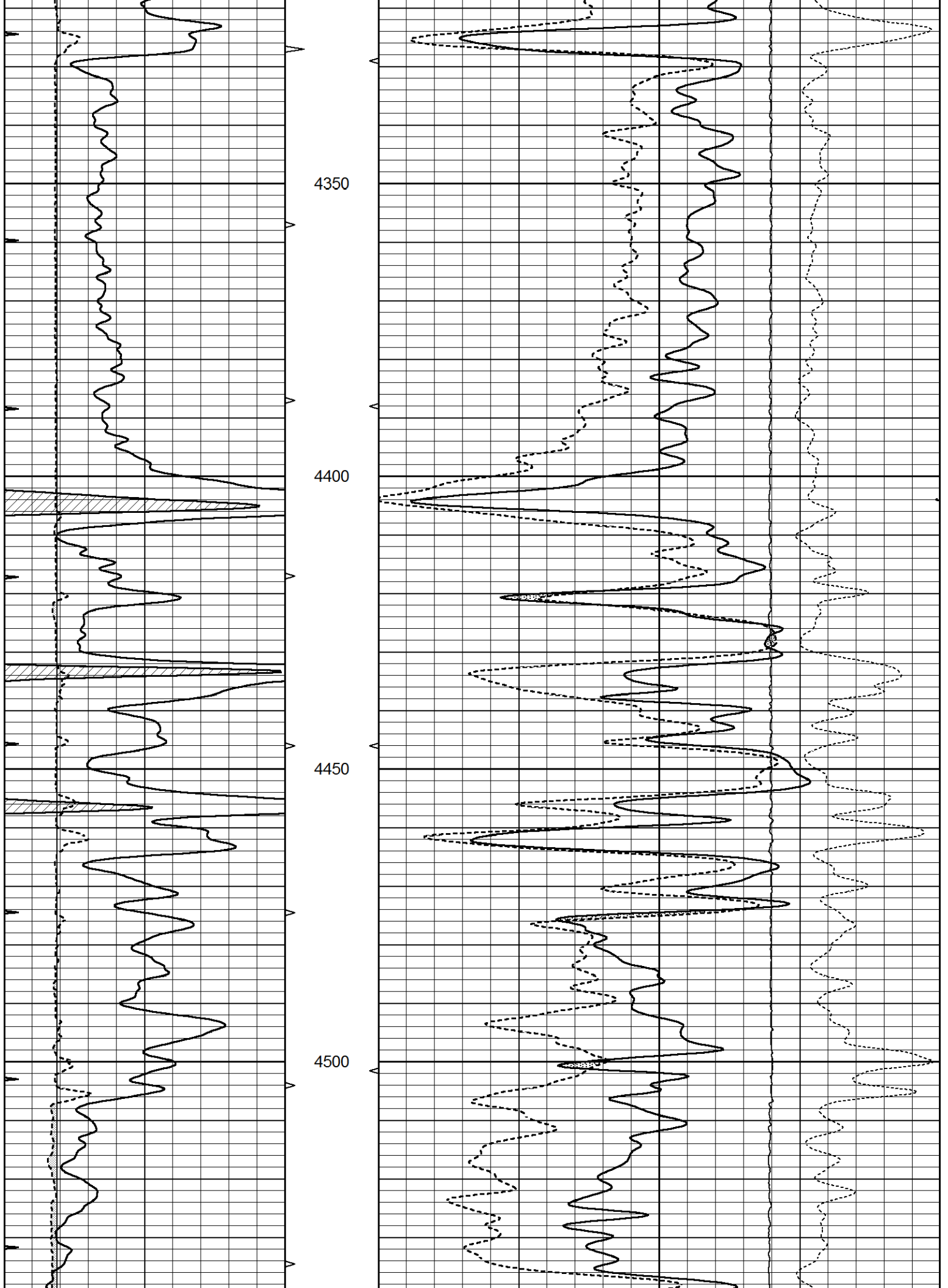
4050

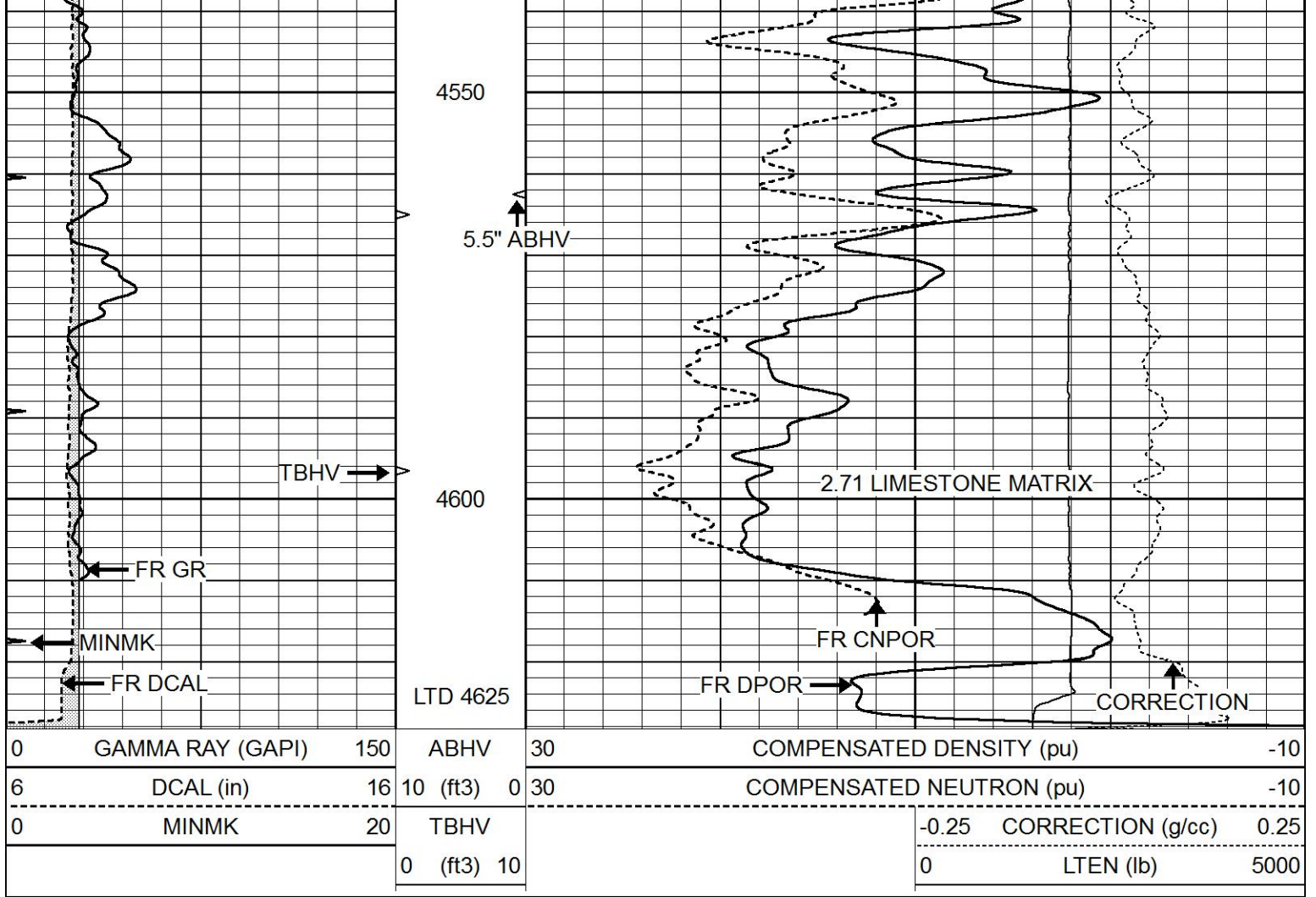




4100  
4150  
4200  
4250  
4300



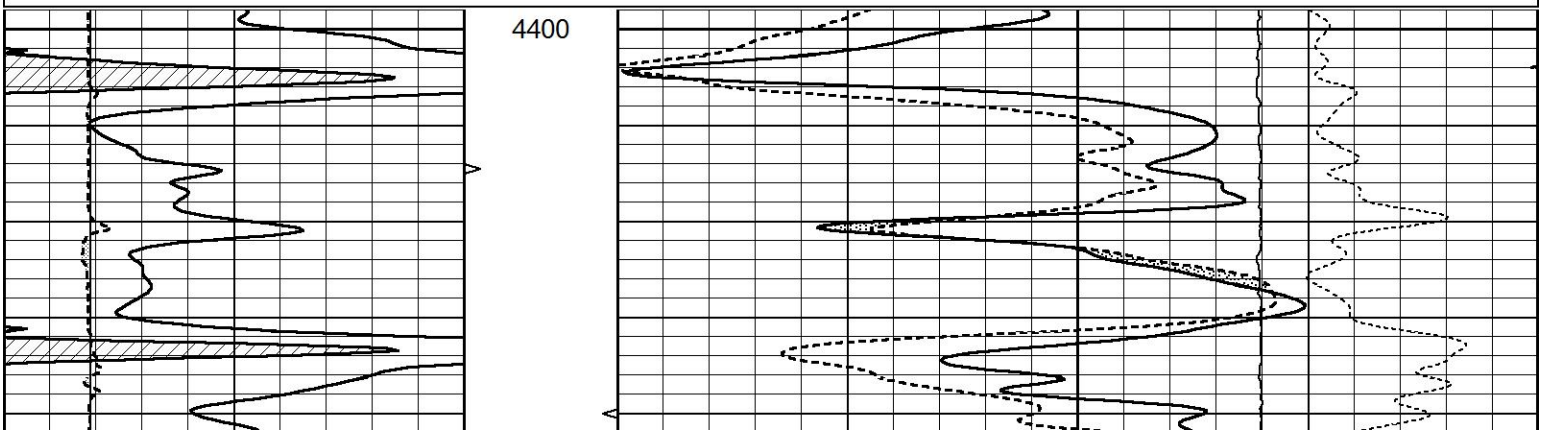


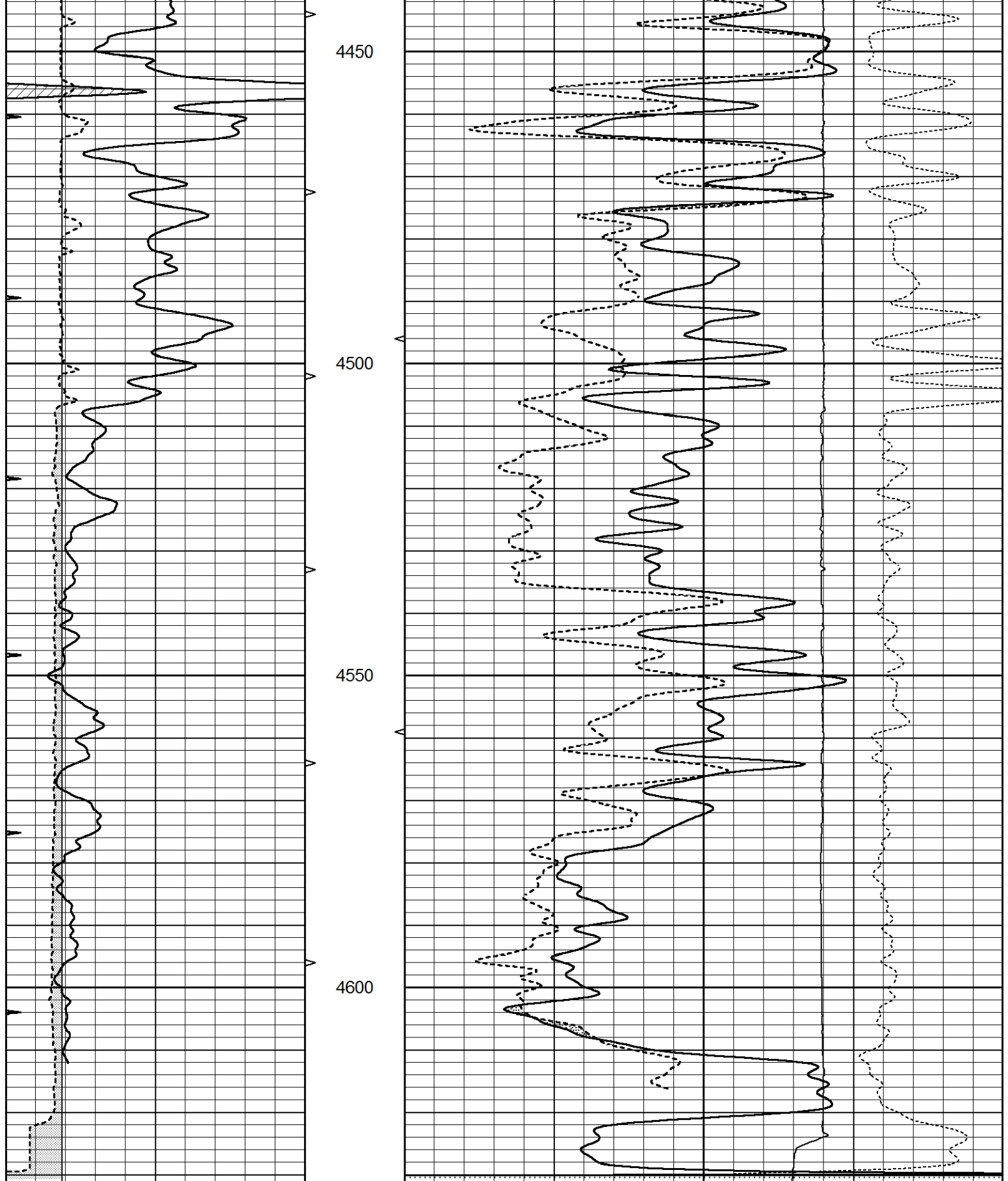


# REPEAT SECTION

Database File 6269ddn.db  
 Dataset Pathname pass4.2  
 Presentation Format den\_neu  
 Dataset Creation Wed Mar 23 13:13:06 2022  
 Charted by Depth in Feet scaled 1:240

0	GAMMA RAY (GAPI)	150	ABHV	30	COMPENSATED DENSITY (pu)	-10
6	DCAL (in)	16	10 (ft3) 0	30	COMPENSATED NEUTRON (pu)	-10
0	MINMK	20	TBHV		-0.25	CORRECTION (g/cc) 0.25
			0 (ft3) 10		0	LTEN (lb) 5000





0	GAMMA RAY (GAPI)	150	ABHV	30	COMPENSATED DENSITY (pu)	-10
6	DCAL (in)	16	10 (ft3)	0 30	COMPENSATED NEUTRON (pu)	-10
0	MINMK	20	TBHV		-0.25 CORRECTION (g/cc)	0.25
			0 (ft3)	10	0 LTEN (lb)	5000

Database File 6269ddn.db  
 Dataset Pathname pass5.1  
 Dataset Creation Wed Mar 23 13:44:18 2022

Litho Density Calibration Report  
 Serial: 002 Model: PRB

Master Calibration Performed Mon May 11 12:00:22 2020

	Background	Magnesium	Aluminum	Aluminum+Fe	
Window 1	787.5	10229.8	2775.7	2400.0	cps
Window 2	729.6	8732.5	2418.3	2137.0	cps
Window 3	603.0	4606.3	1428.3	1320.0	cps
Window 4	173.7	178.2	174.1	173.1	cps
Long Space	0.0	8002.9	1688.7	1407.4	cps
Short Space	1.1	1870.8	1208.3	1030.3	cps
Rho		1.7100	2.5900	0.0000	g/cc
Pe		2.0000	2.7500	5.7900	
Rib Angle	: 44.3	Rib Slope	: 0.976	Density/Spine Ratio	: 0.545
Spine Angle	: 74.3	Spine Slope	: 3.559	Spine Intercept	: -17.8

Before Survey Verification Performed Wed Dec 31 18:00:00 1969

Window 1	0.0	0.0	0.0	0.0	cps
Window 2	0.0	0.0	0.0	0.0	cps
Window 3	0.0	0.0	0.0	0.0	cps
Window 4	0.0	0.0	0.0	0.0	cps
Long Space	0.0	0.0	0.0	0.0	cps
Short Space	0.0	0.0	0.0	0.0	cps
Measured Rho		0.0000	0.0000	0.0000	g/cc
Measured Correction		0.0000	0.0000	0.0000	g/cc
Measured Pe			0.0000	0.0000	

After Survey Verification Performed Wed Dec 31 18:00:00 1969

Window 1	0.0	0.0	0.0	0.0	cps
Window 2	0.0	0.0	0.0	0.0	cps
Window 3	0.0	0.0	0.0	0.0	cps
Window 4	0.0	0.0	0.0	0.0	cps
Long Space	0.0	0.0	0.0	0.0	cps
Short Space	0.0	0.0	0.0	0.0	cps
Measured Rho		0.0000	0.0000	0.0000	g/cc
Measured Correction		0.0000	0.0000	0.0000	g/cc
Measured Pe			0.0000	0.0000	

Compensated Neutron Calibration Report

Serial Number: 070808PMC  
 Tool Model: NABORS

PRE-SURVEY VERIFICATION

Detector	Readings	Measured	Target
Short Space	cps		
Long Space	cps	pu	pu

POST-SURVEY VERIFICATION

Detector	Readings	Measured	Target
Short Space	cps		
Long Space	cps	pu	pu

Gamma Ray Calibration Report

Serial Number:	070558		
Tool Model:	OPEN_GR		
Performed:	Tue Mar 22 20:25:25 2022		
Calibrator Value:	1.0	GAPI	
Background Reading:	0.0	cps	
Calibrator Reading:	1.0	cps	
Sensitivity:	0.3000	GAPI/cps	