

MICRO
LOG



Company PALOMINO PETROLEUM, INC.
Well THE DARK KNIGHT #1
Field ARNOLD NORTH
County NESS State KANSAS

Location: API #: 15-135-26161-0000
564' FNL & 137' FEL
SE - NE - NE - NE
SEC 10 TWP 16S RGE 25W
Permanent Datum GROUND LEVEL Elevation 2551
Log Measured From KELLY BUSHING 11' A.G.L.
Drilling Measured From KELLY BUSHING
Other Services
CDL/CNL
DIL
Elevation
K.B. 2562
D.F. 2560
G.L. 2551

Date	3/23/22		
Run Number	THREE		
Depth Driller	4625		
Depth Logger	4625		
Bottom Logged Interval	4623		
Top Log Interval	3700		
Casing Driller	8 5/8"@259'		
Casing Logger	259		
Bit Size	7 7/8"		
Type Fluid in Hole	CHEMICAL MUD	CHLORIDES 3.500 PPM	
Density / Viscosity	9.4/52		
pH / Fluid Loss	10.0/8.0		
Source of Sample	FLOWLINE		
Rm @ Meas. Temp	1.30@60F		
Rmf @ Meas. Temp	.975@60F		
Rmc @ Meas. Temp	1.56@60F		
Source of Rmf / Rmc	MEASUREMENT		
Rm @ BHT	.639@122F		
Time Circulation Stopped	4.5 HOURS		
Time Logger on Bottom	2:00 P.M.		
Maximum Recorded Temperature	122F		
Equipment Number	922339		
Location	HAYS, KANSAS		
Recorded By	JEFF LUEBBERS	COLE ROBBEN	
Witnessed By	RYAN SEIB		

<<< Fold Here >>>

All interpretations are opinions based on inferences from electrical or other measurements and we cannot and do not guarantee the accuracy or correctness of any interpretation, and we shall not, except in the case of gross or willful negligence on our part, be liable or responsible for any loss, costs, damages, or expenses incurred or sustained by anyone resulting from any interpretation made by any of our officers, agents or employees. These interpretations are also subject to our general terms and conditions set out in our current Price Schedule.

15-135-26161-0000 Comments

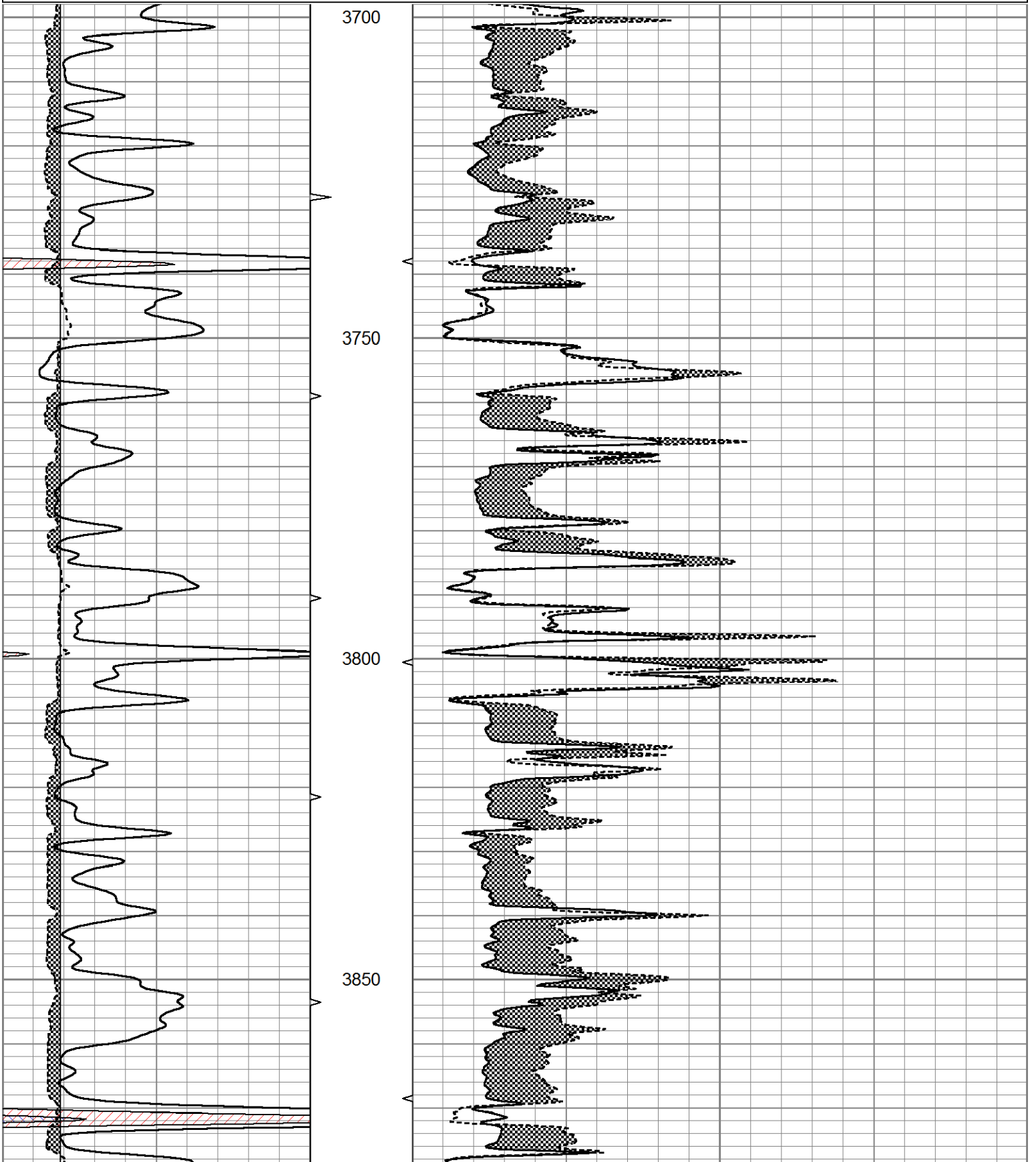
THANK YOU FOR USING ELI WIRELINE HAYS, KANSAS (785) 628-6395
DIRECTIONS
ARNOLD, KS., W. ON HWY 4 TO "RD. J", 3N., W. INTO

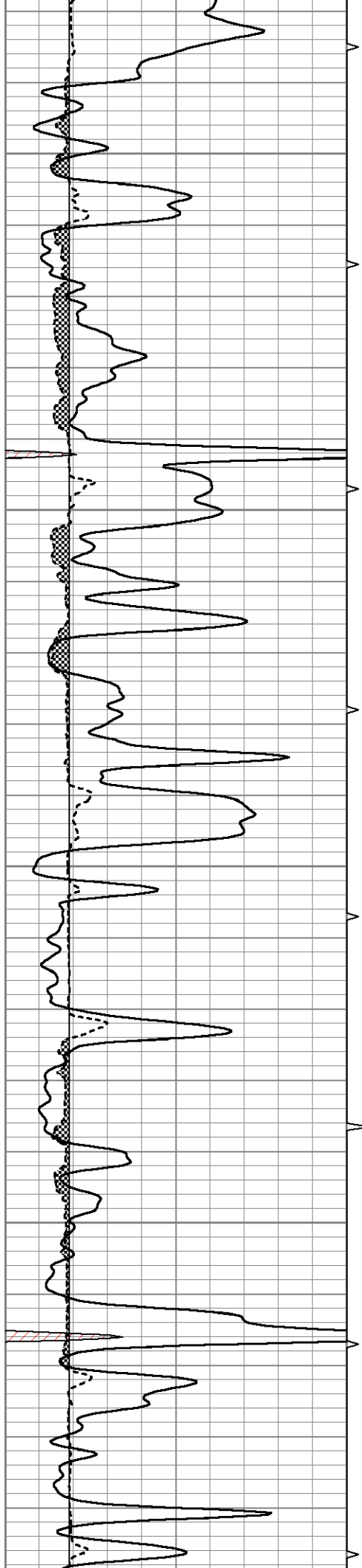


MAIN SECTION

Database File 6269ddn.db
 Dataset Pathname pass8.2
 Presentation Format micro
 Dataset Creation Wed Mar 23 15:13:56 2022
 Charted by Depth in Feet scaled 1:240

0	GR (GAPI)	150	ABHV	0	MEL20 (Ohm-m)	40
6	MELCAL (in)	16	10 (ft3)	0	MEL15 (Ohm-m)	40
			ABHV			
			0 (ft3)	10		



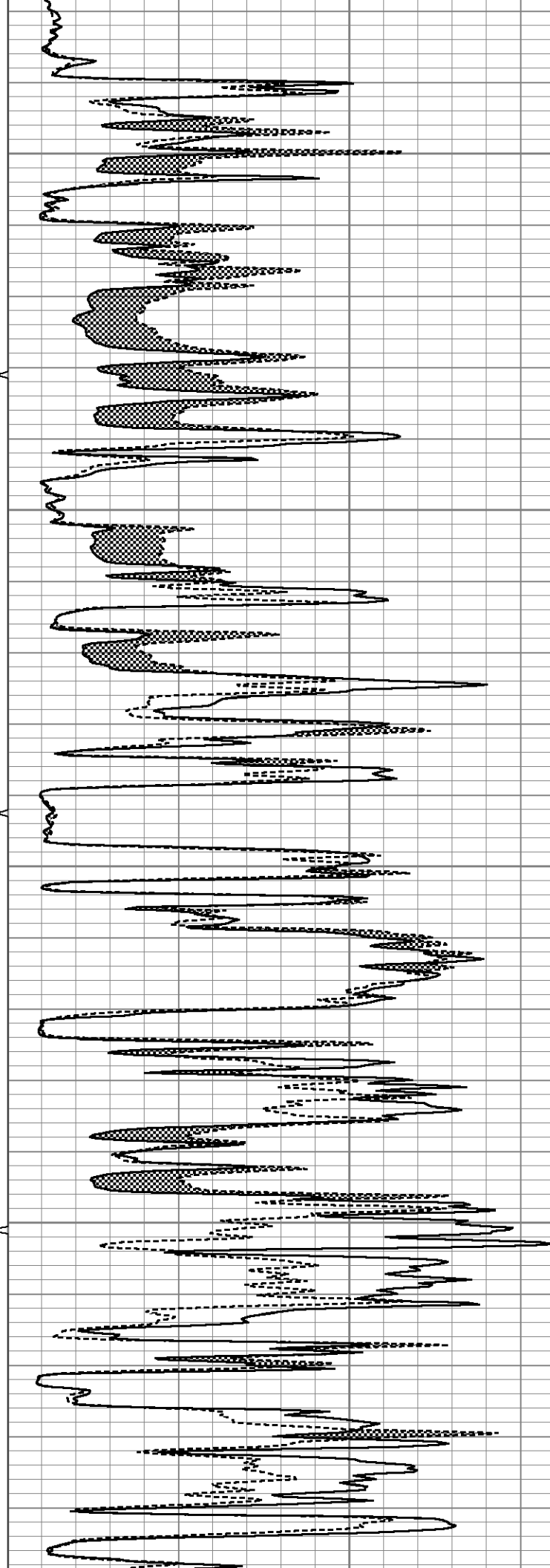


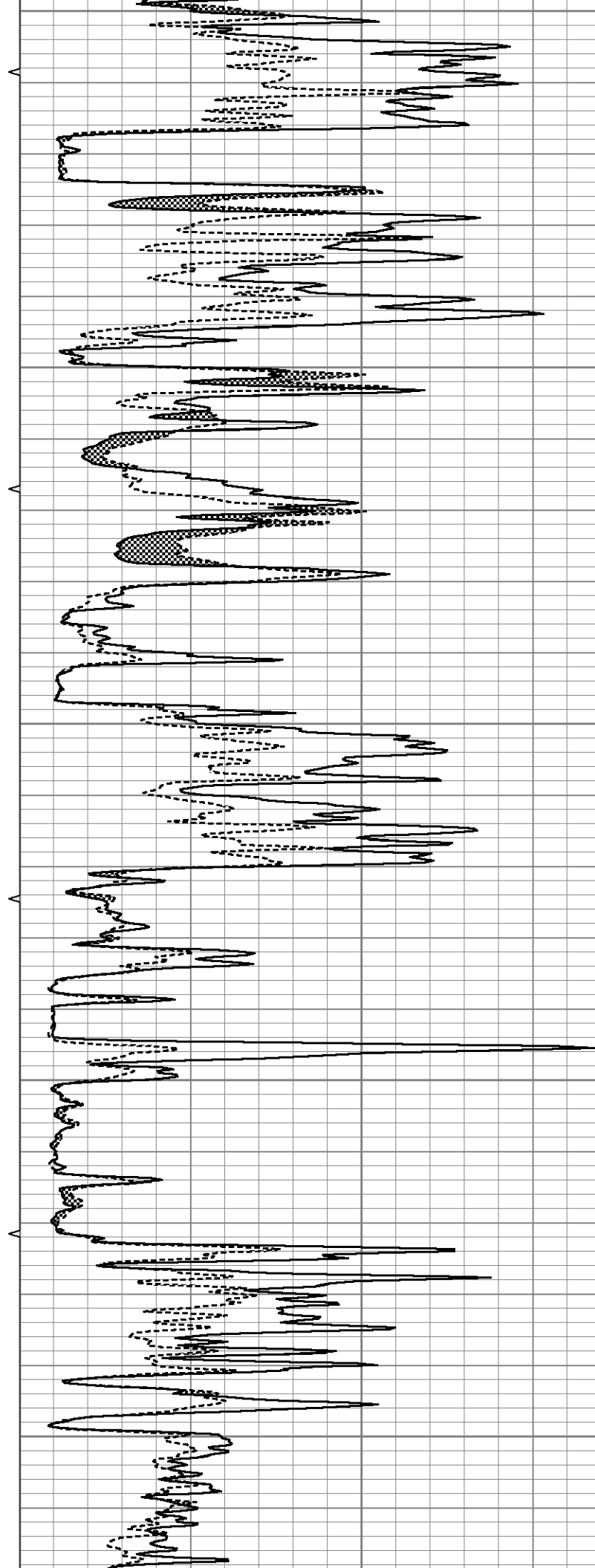
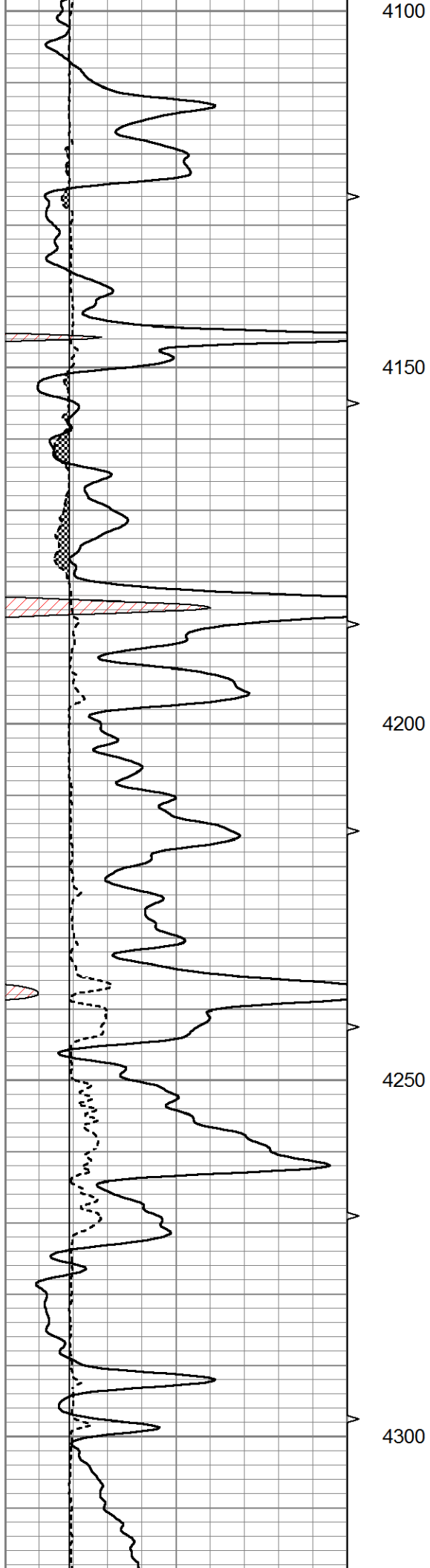
3900

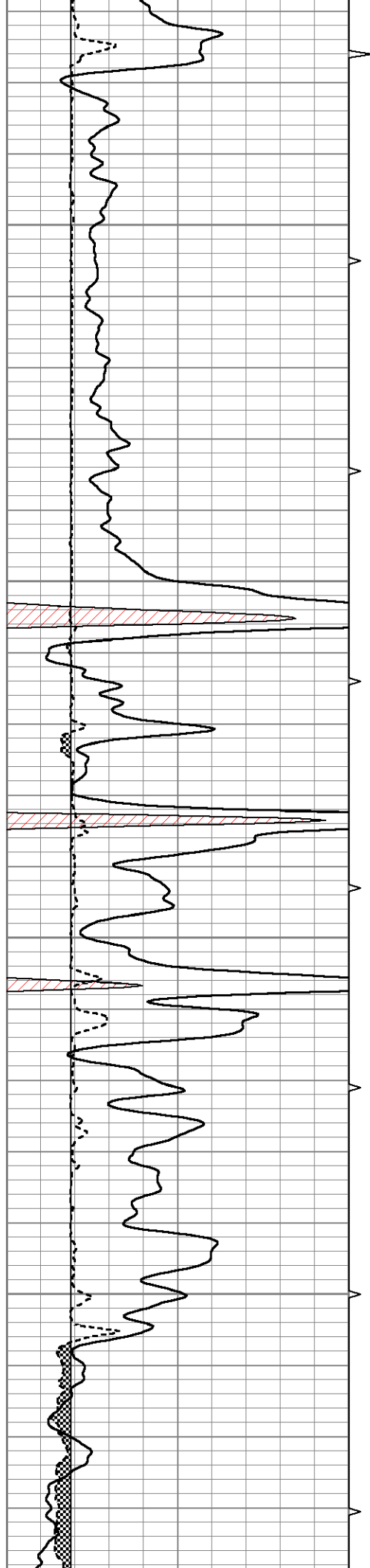
3950

4000

4050





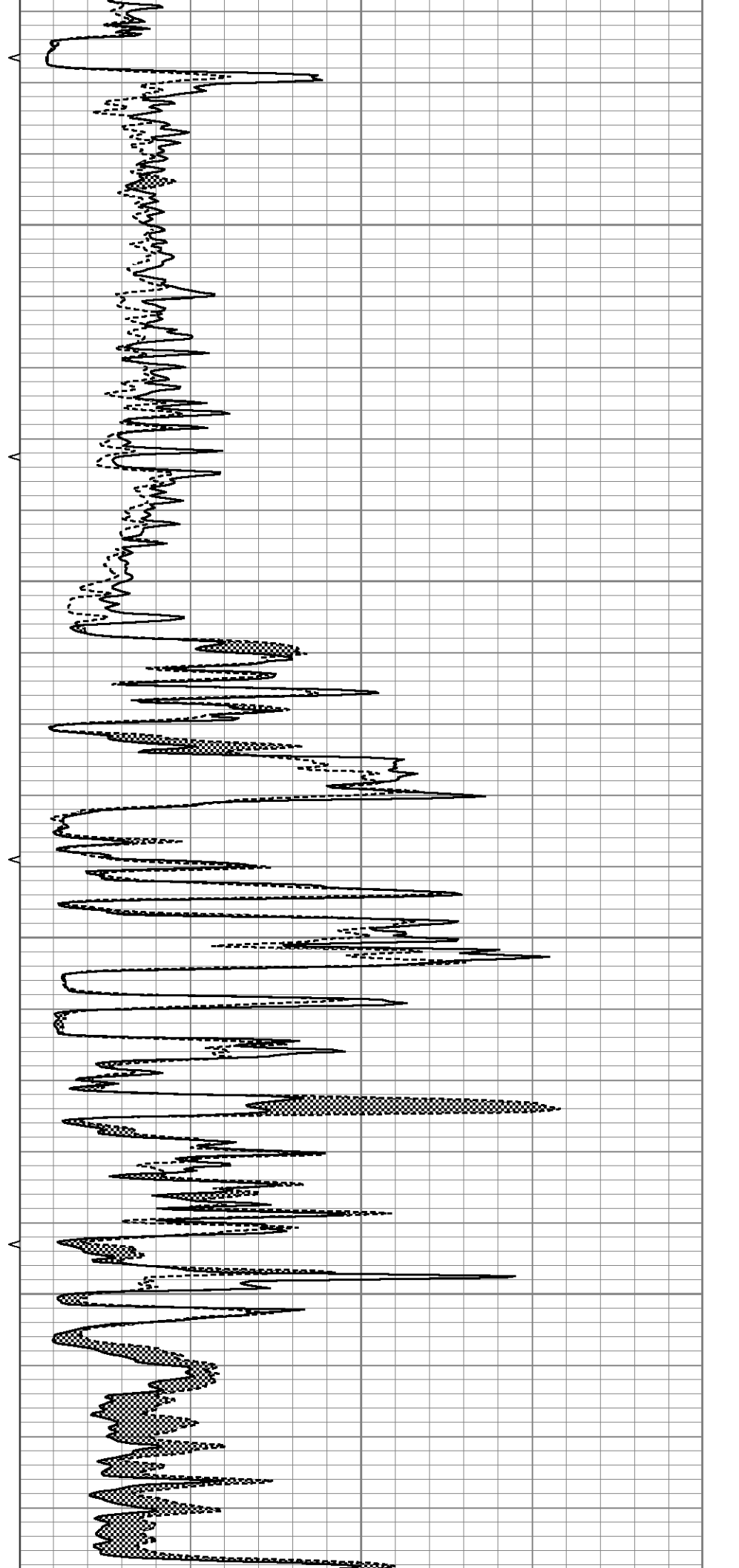


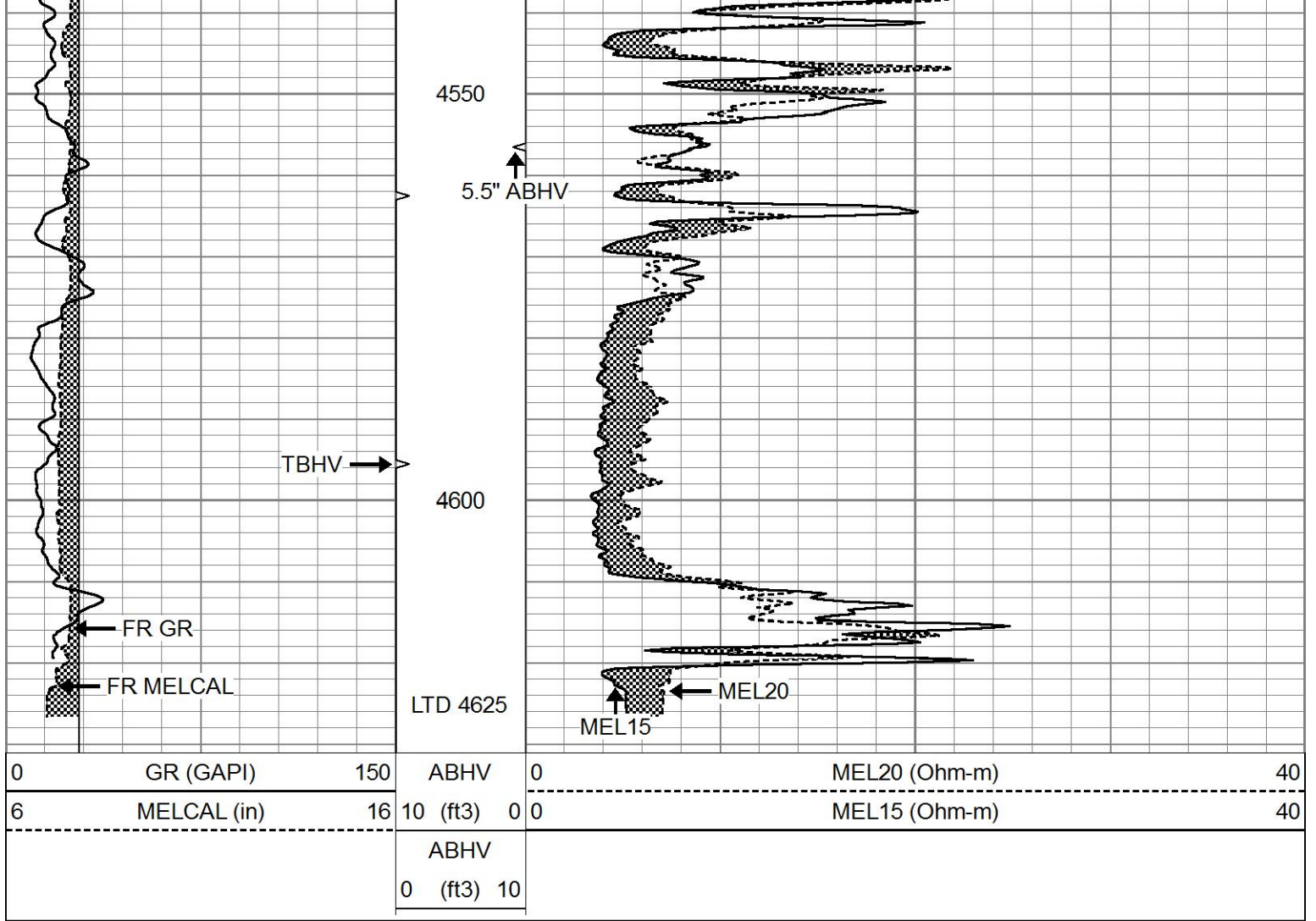
4350

4400

4450

4500

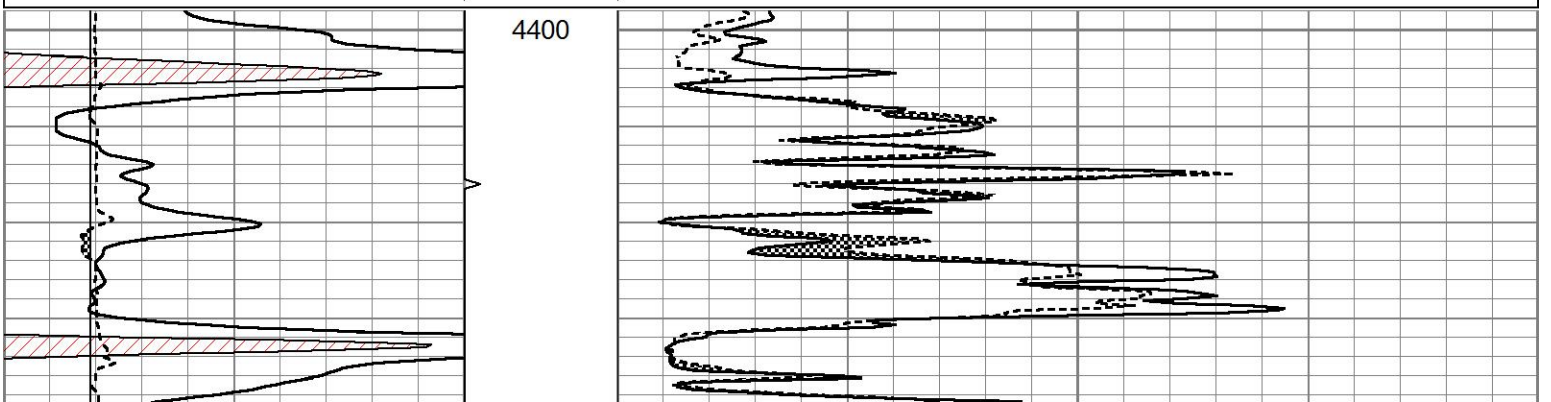


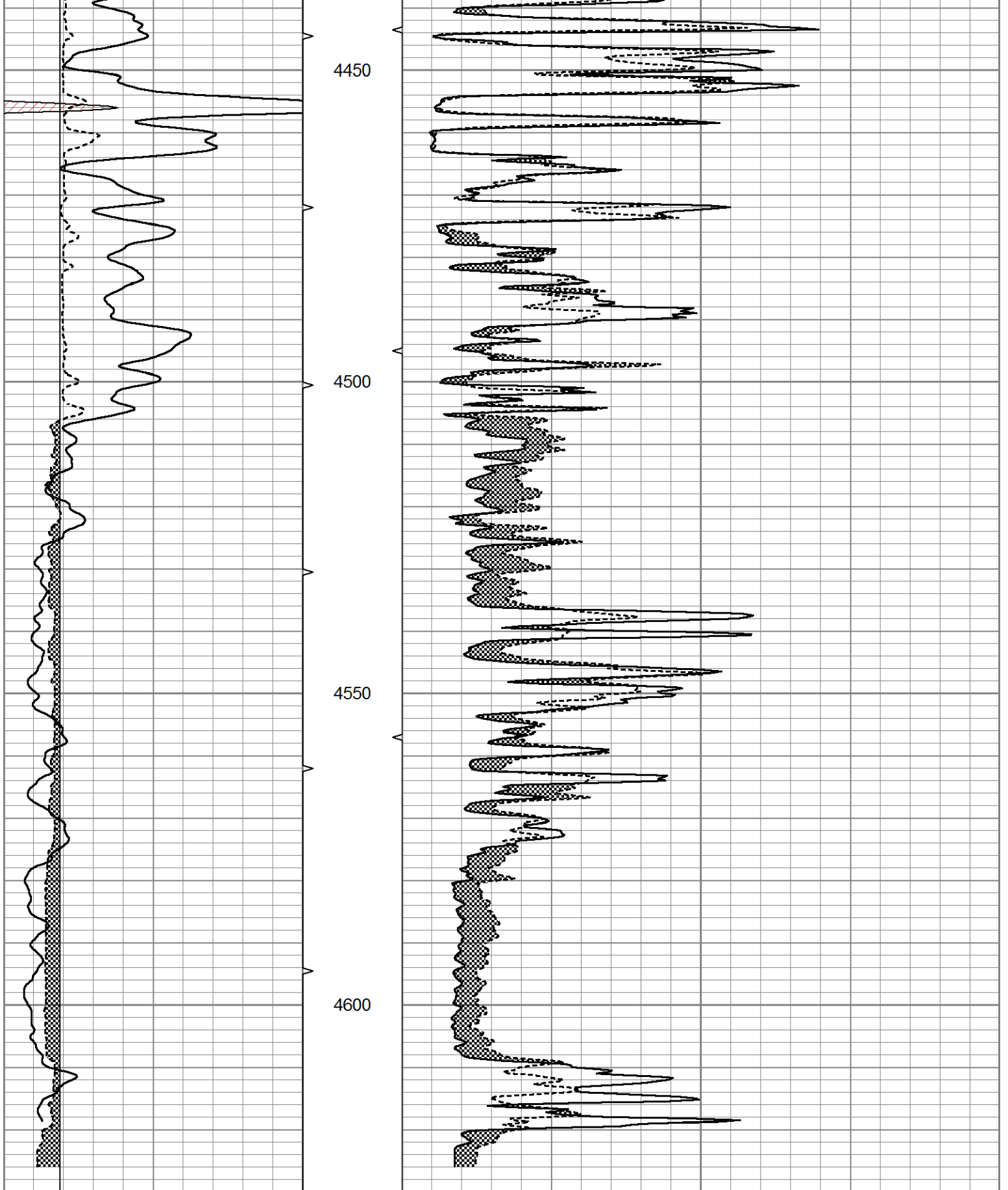


REPEAT SECTION

Database File 6269ddn.db
 Dataset Pathname pass7.1
 Presentation Format micro
 Dataset Creation Wed Mar 23 14:39:34 2022
 Charted by Depth in Feet scaled 1:240

0	GR (GAPI)	150	ABHV	0	MEL20 (Ohm-m)	40
6	MELCAL (in)	16	10 (ft3)	0	MEL15 (Ohm-m)	40
			ABHV			
			0 (ft3)	10		





0	GR (GAPI)	150	ABHV	0	MEL20 (Ohm-m)	40
6	MELCAL (in)	16	10 (ft3)	0	MEL15 (Ohm-m)	40
			ABHV			
			0 (ft3)	10		

Calibration Report

Database File 6269ddn.db
 Dataset Pathname pass8.2
 Dataset Creation Wed Mar 23 15:13:56 2022

MICRO Calibration Report

Serial Number: 070910
 Tool Model: ProbeN
 Performed: Wed Mar 16 17:42:50 2022

Caliper Calibration: Gain=5.479 Offset=-0.438

	Low Cal	High Cal
References	8.000	16.000
Readings	1.540	3.000

1.5" Calibration: Gain=12.000 Offset=0.800

	Low Cal	High Cal
References	0.000	20.000
Readings	0.000	1.216

2" Calibration: Gain=28.000 Offset=0.000

	Low Cal	High Cal
References	0.000	20.000
Readings	0.002	1.053

Gamma Ray Calibration Report

Serial Number: 070558
 Tool Model: OPEN_GR
 Performed: Tue Mar 22 20:25:25 2022

Calibrator Value: 1.0 GAPI

Background Reading:	0.0	cps
Calibrator Reading:	1.0	cps

Sensitivity: 0.3000 GAPI/cps