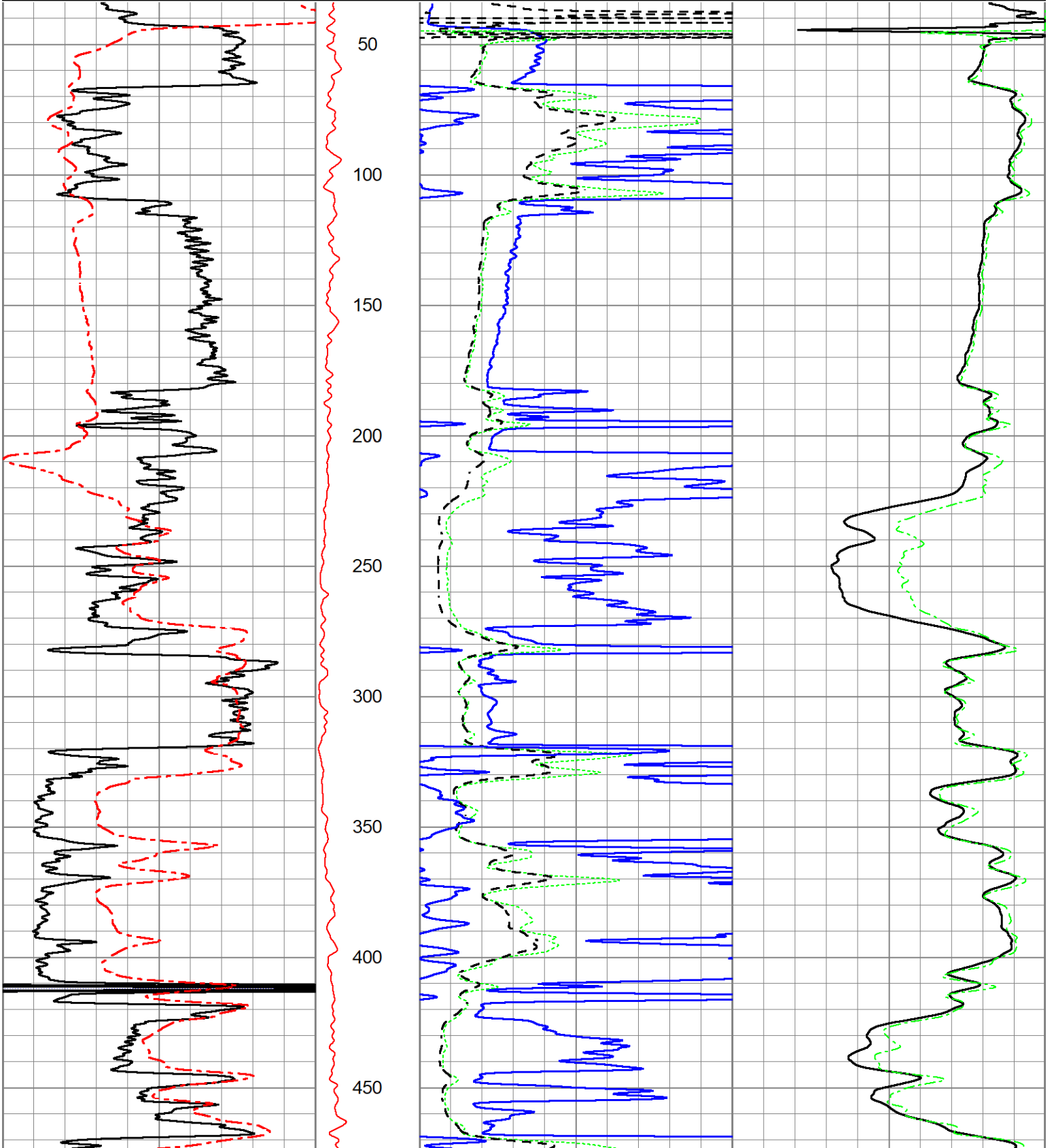
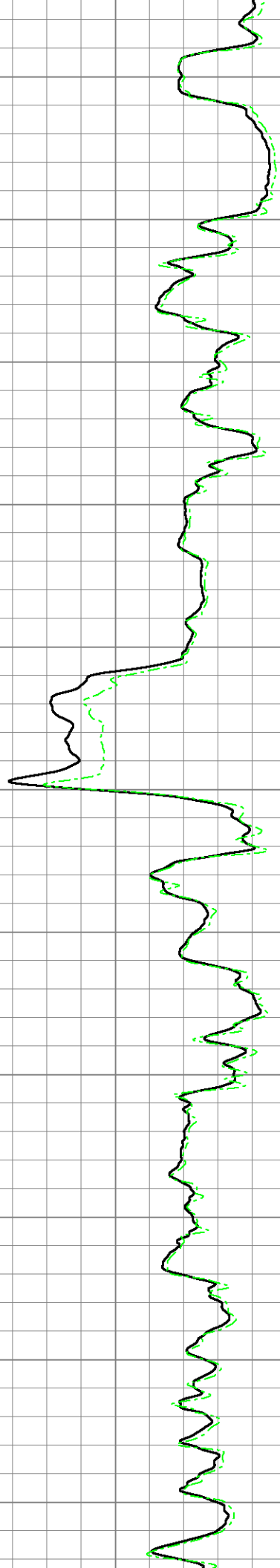
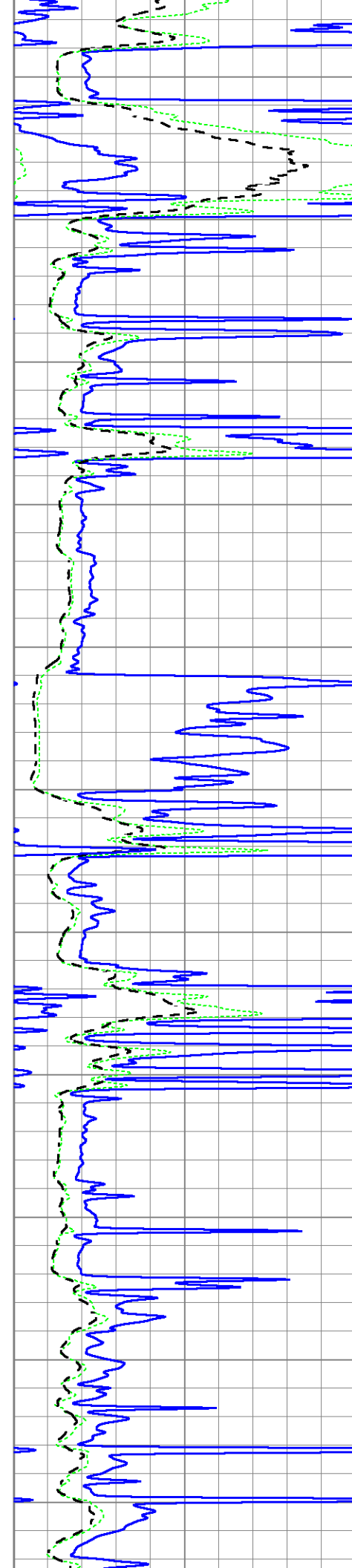
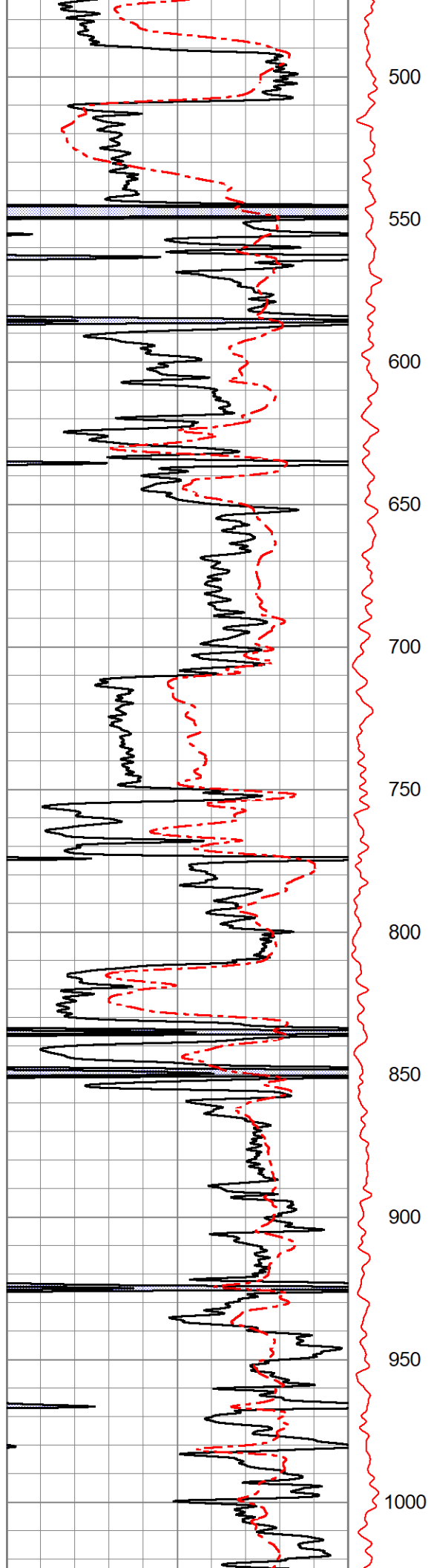
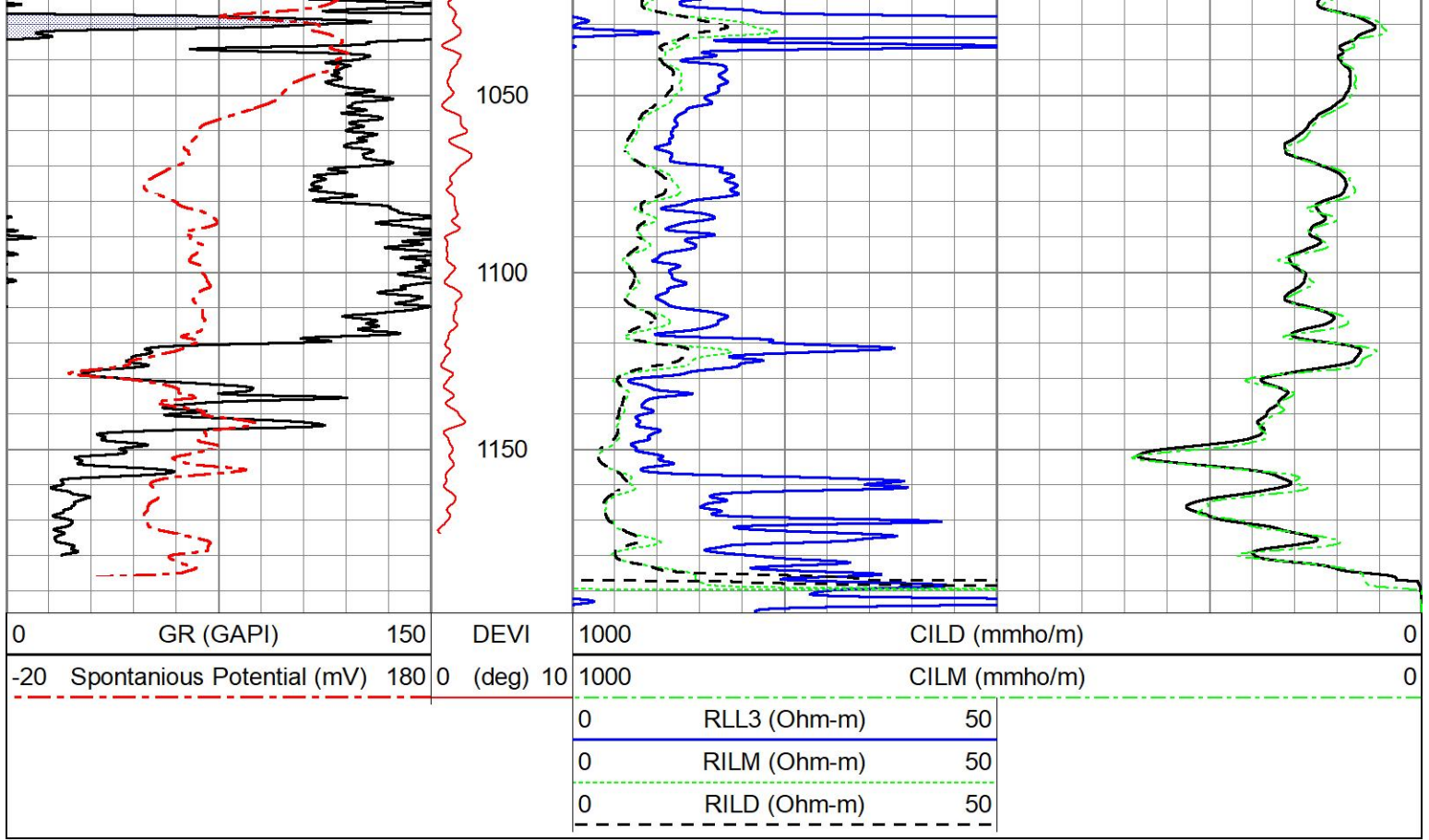


Database File ow2-8921 cherokee.db
 Dataset Pathname pass2.1
 Presentation Format mmdil2
 Dataset Creation Wed Dec 08 11:10:37 2021
 Charted by Depth in Feet scaled 1:600

0	GR (GAPI)	150	DEVI	1000	CILD (mmho/m)	0
-20	Spontaneous Potential (mV)	180	0 (deg)	1000	CILM (mmho/m)	0
			0	RLL3 (Ohm-m)	50	
			0	RILM (Ohm-m)	50	
			0	RILD (Ohm-m)	50	



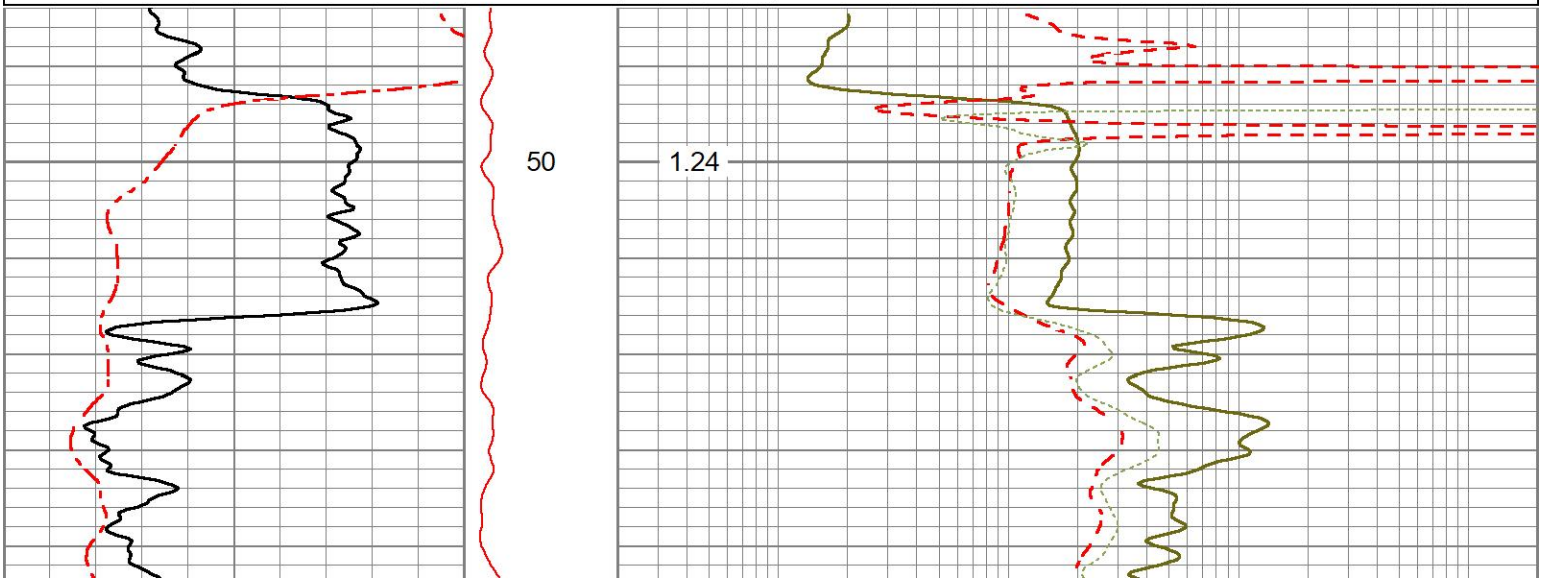


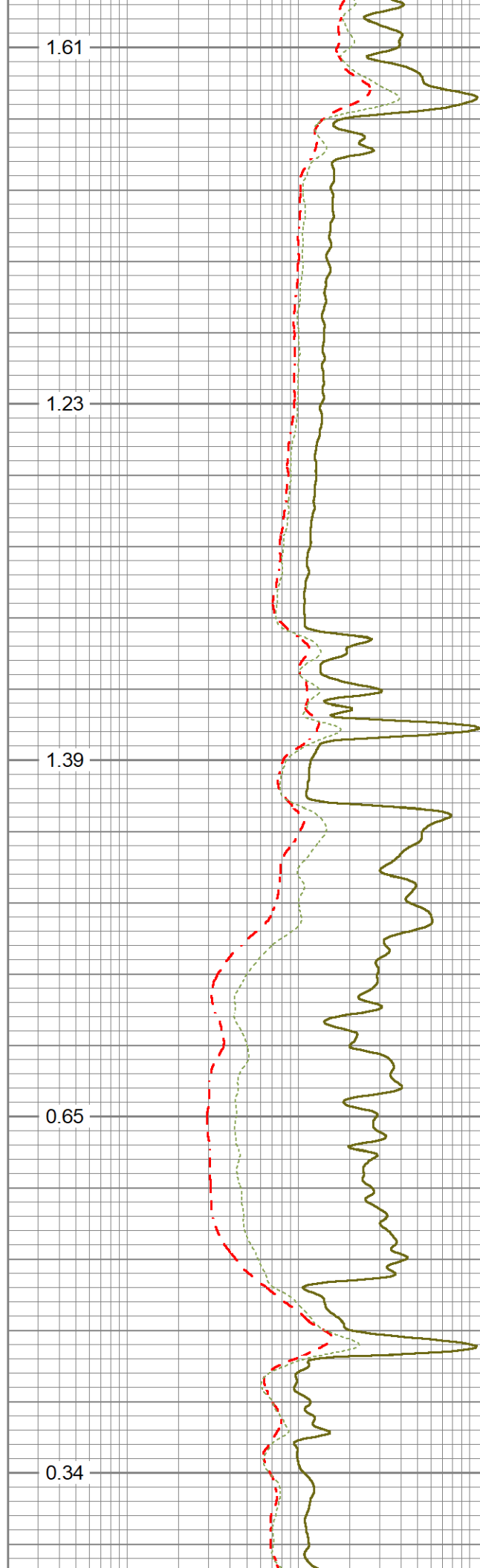
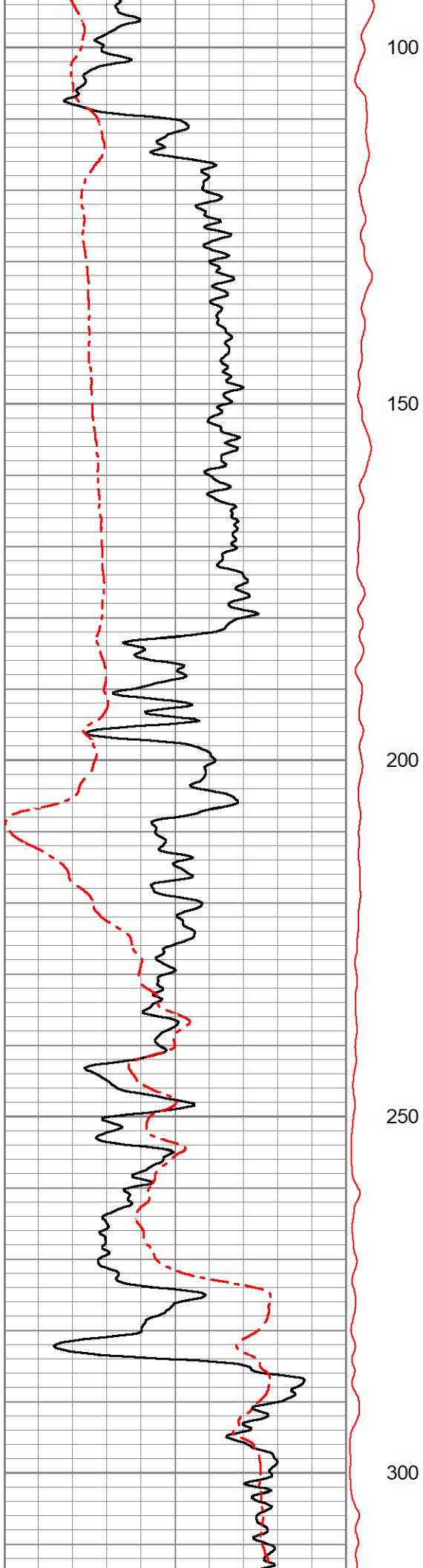


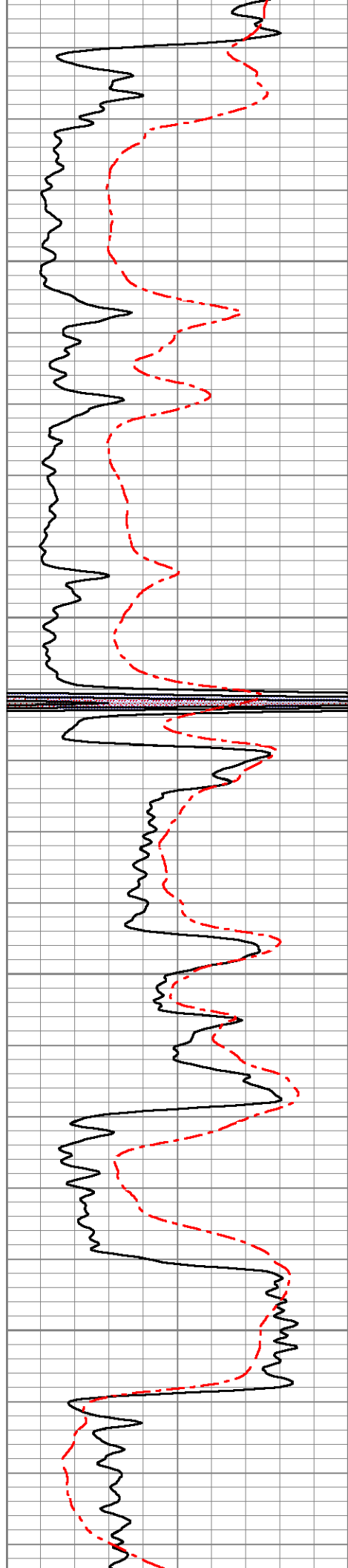
5" DUAL INDUCTION LOG

Database File ow2-8921 cherokee.db
 Dataset Pathname pass2.2
 Presentation Format mmdil5
 Dataset Creation Wed Dec 08 11:10:51 2021
 Charted by Depth in Feet scaled 1:240

0	Gamma Ray (GAPI)	150	DEVI	0.2	Shallow Resistivity (Ohm-m)	2000
-20	Spontaneous Potential (mV)	180	0 (deg)	10	Deep Resistivity (Ohm-m)	2000
					Medium Resistivity (Ohm-m)	2000
			DEVI (deg)			







350

400

450

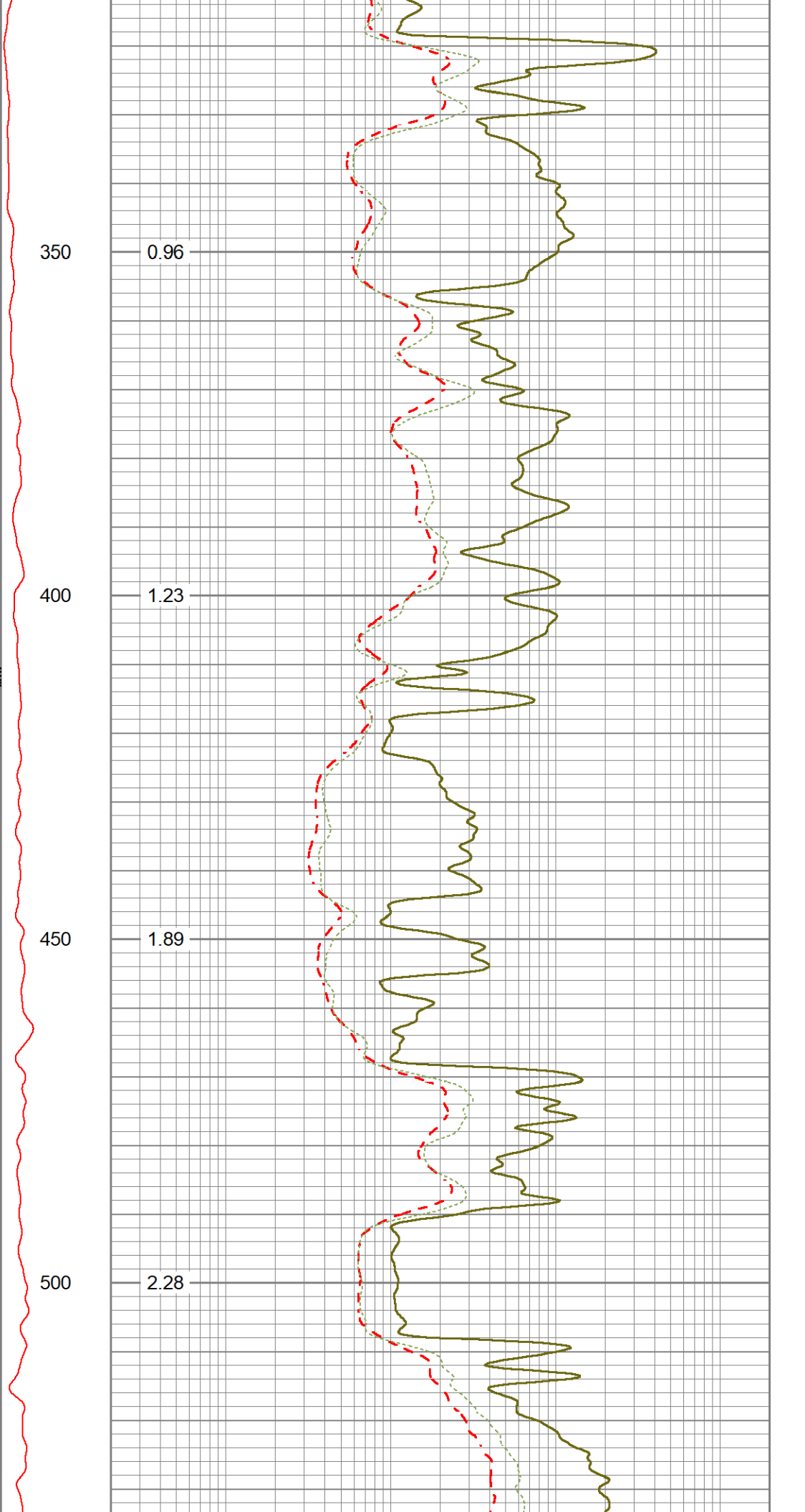
500

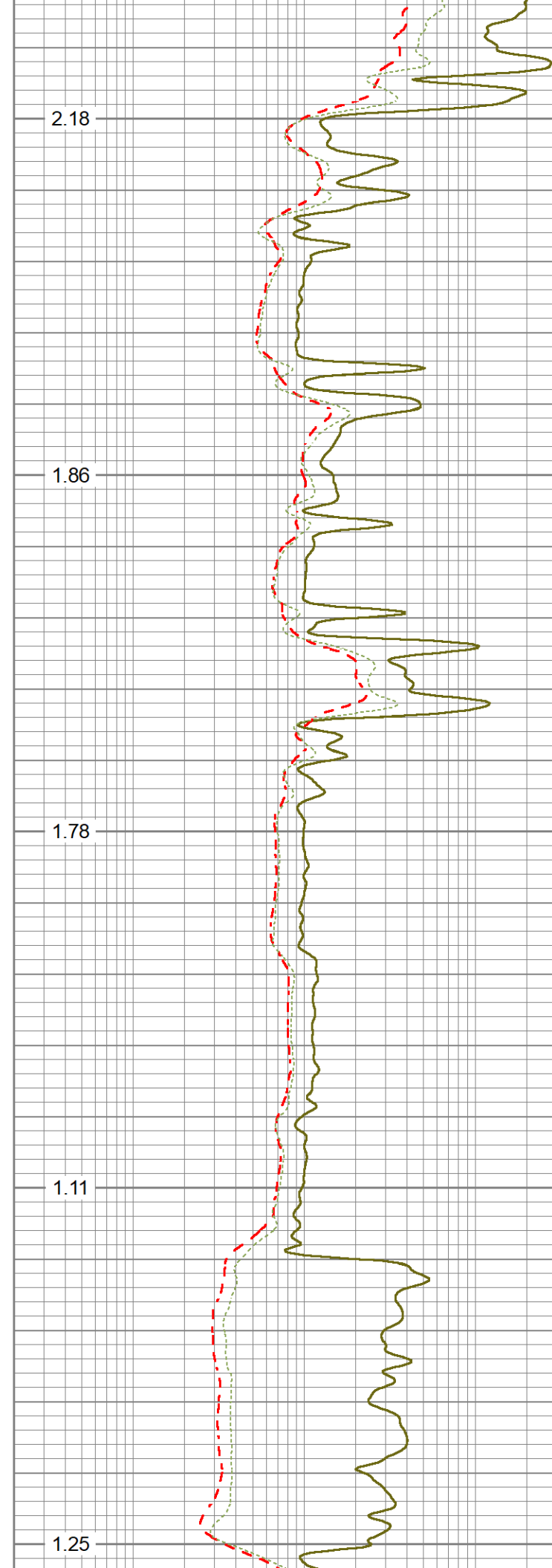
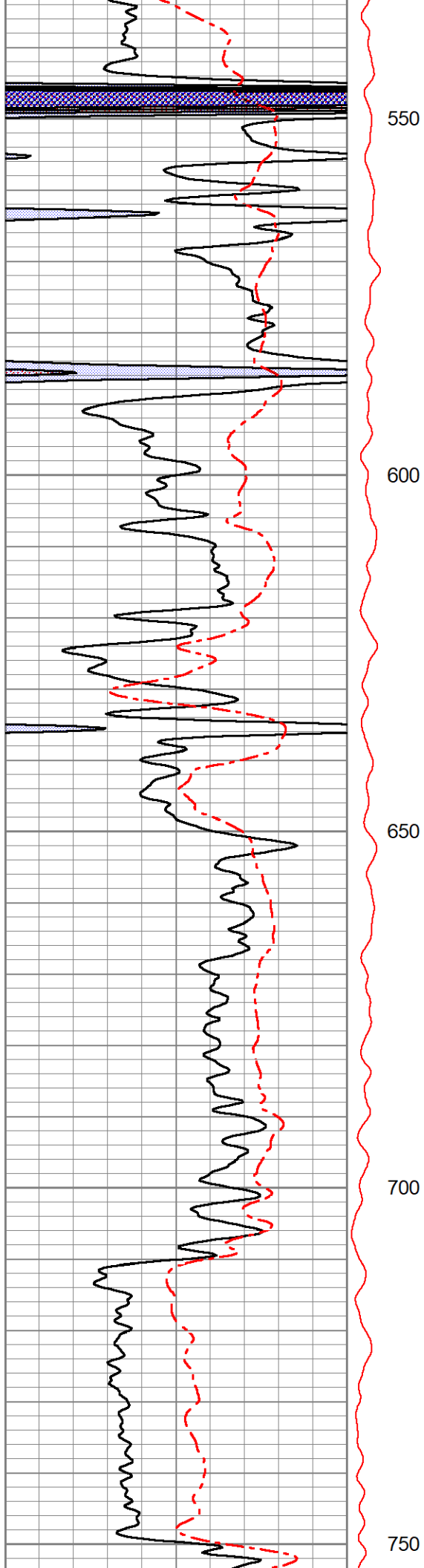
0.96

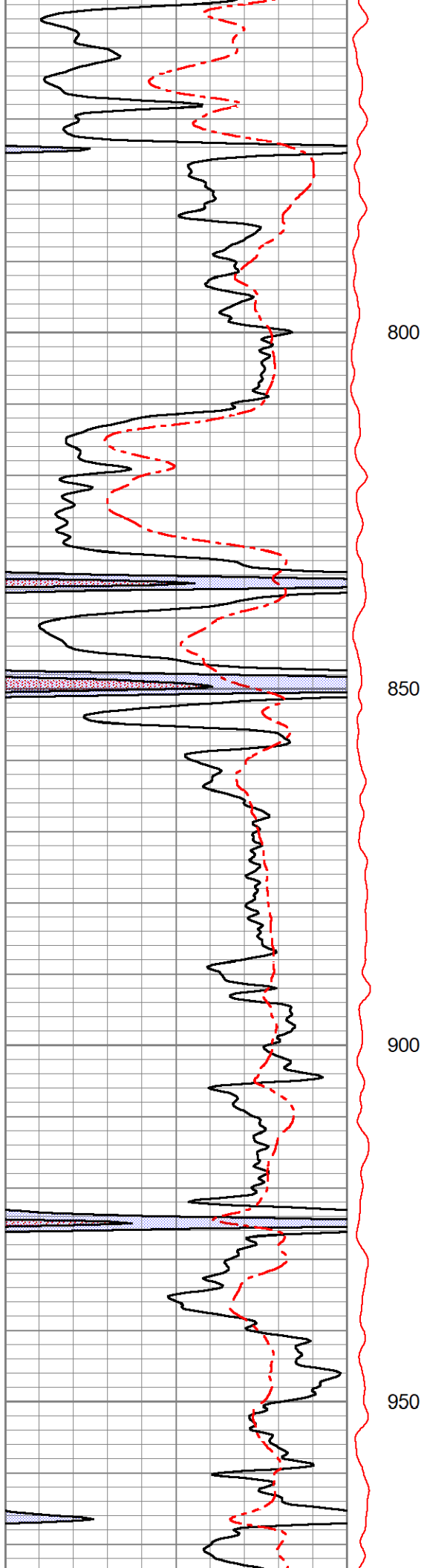
1.23

1.89

2.28





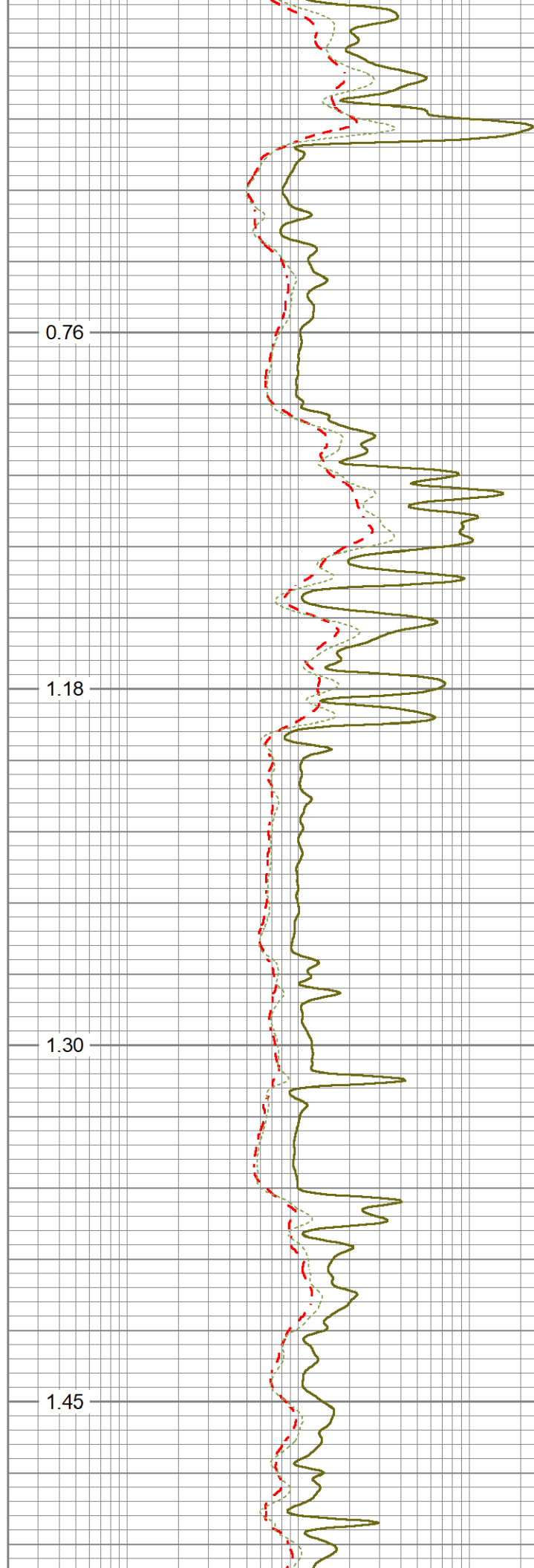


800

850

900

950

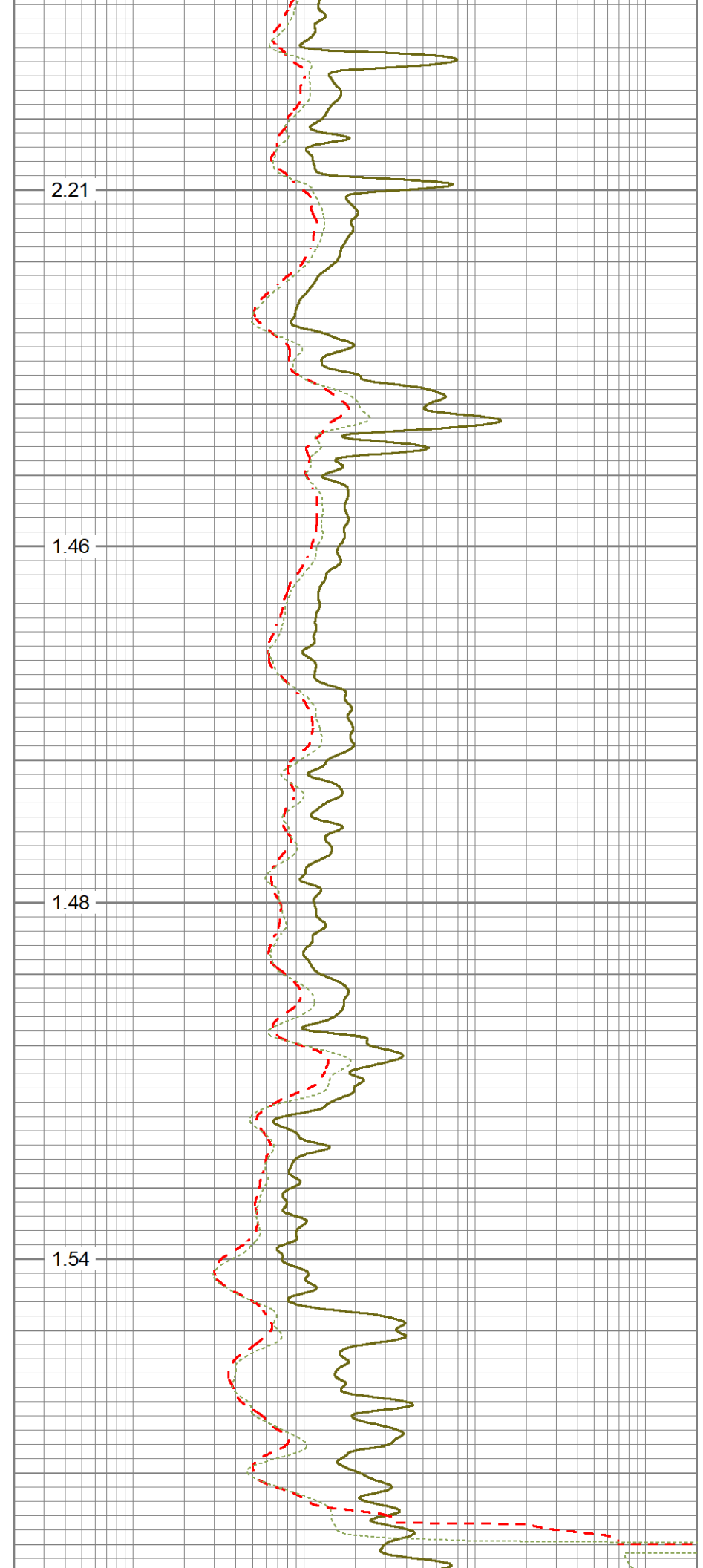
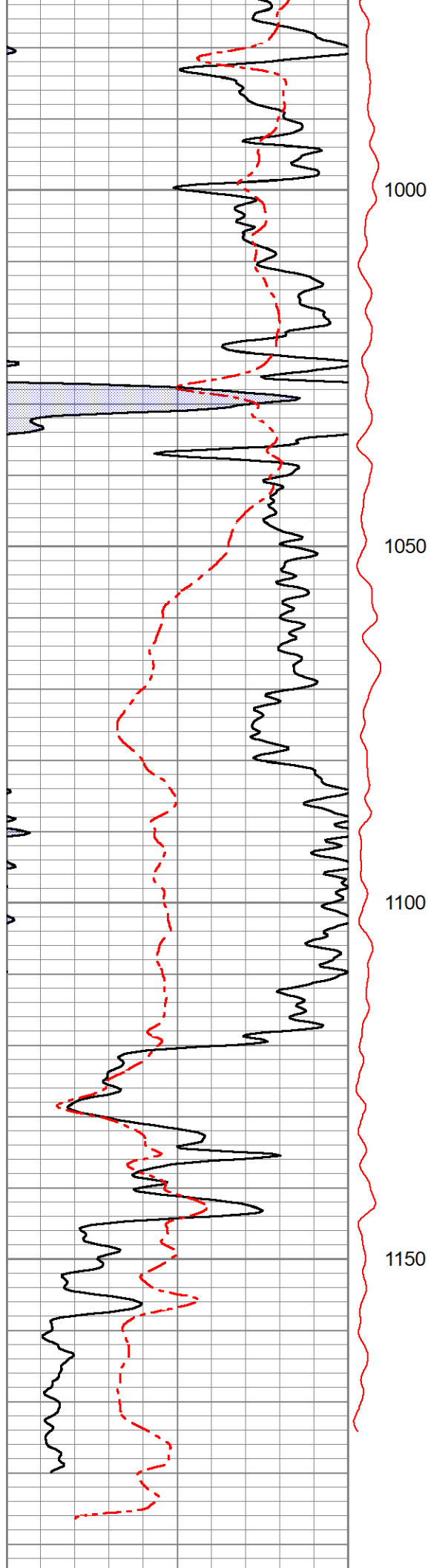


0.76


1.18

1.30

1.45



0	Gamma Ray (GAPI)	150	DEVI	0.2	Shallow Resistivity (Ohm-m)	2000	
-20	Spontaneous Potential (mV)	180	0 (deg)	10	0.2	Deep Resistivity (Ohm-m)	2000
					0.2	Medium Resistivity (Ohm-m)	2000
				DEVI (deg)			

Sensor	Offset (ft)	Schematic	Description	Length (ft)	O.D. (in)	Weight (lb)
			Cable-CableHead Isulation Sub	1.42	3.00	20.00
CILD SP	10.92 10.42		DIL-GEAR (158) Dual Induction Electrical Log	21.36	4.00	395.00
CILM	7.00					
RLL3	1.65					

Dataset: ow2-8921 cherokee.db: field/well/run1/pass2
 Total length: 22.78 ft
 Total weight: 415.00 lb
 O.D.: 4.00 in