



DUAL INDUCTION LOG

Company CHEROKEE WELLS, LLC
 Well ROBERT, S.FGSF # B3-17
 Field FREDONIA
 County WILSON State KANSAS

Location: API #: 15-205-28522-00-00
 SW SW SW NE
 2475' FNL & 2475' FEL
 SEC 17 TWP 29S RGE 15E
 Permanent Datum GL Elevation 953
 Log Measured From GL
 Drilling Measured From GL
 Other Services CDLN
 Elevation K.B. D.F. G.L. 953

Date	12-1-21
Run Number	ONE
Depth Driller	1198
Depth Logger	1198
Bottom Logged Interval	1195
Top Log Interval	SURFACE
Casing Driller	8.625" @ 44'
Casing Logger	8.625" @ 44'
Bit Size	6.75"
Type Fluid in Hole	CHEM MUD
Density / Viscosity	
pH / Fluid Loss	
Source of Sample	
Rm @ Meas. Temp	
Rmf @ Meas. Temp	
Rmc @ Meas. Temp	
Source of Rmf / Rmc	
Rm @ BHT	
Time Circulation Stopped	9:00 AM
Time Logger on Bottom	10:30 AM
Maximum Recorded Temperature	90
Equipment Number	OW2
Location	HOMINY, OK
Recorded By	MACKEY
Witnessed By	KIDD
	MR. MORRIS

<<< Fold Here >>>

All interpretations are opinions based on inferences from electrical or other measurements and we cannot and do not guarantee the accuracy or correctness of any interpretation, and we shall not, except in the case of gross or willful negligence on our part, be liable or responsible for any loss, costs, damages, or expenses incurred or sustained by anyone resulting from any interpretation made by any of our officers, agents or employees. These interpretations are also subject to our general terms and conditions set out in our current Price Schedule.

Comments

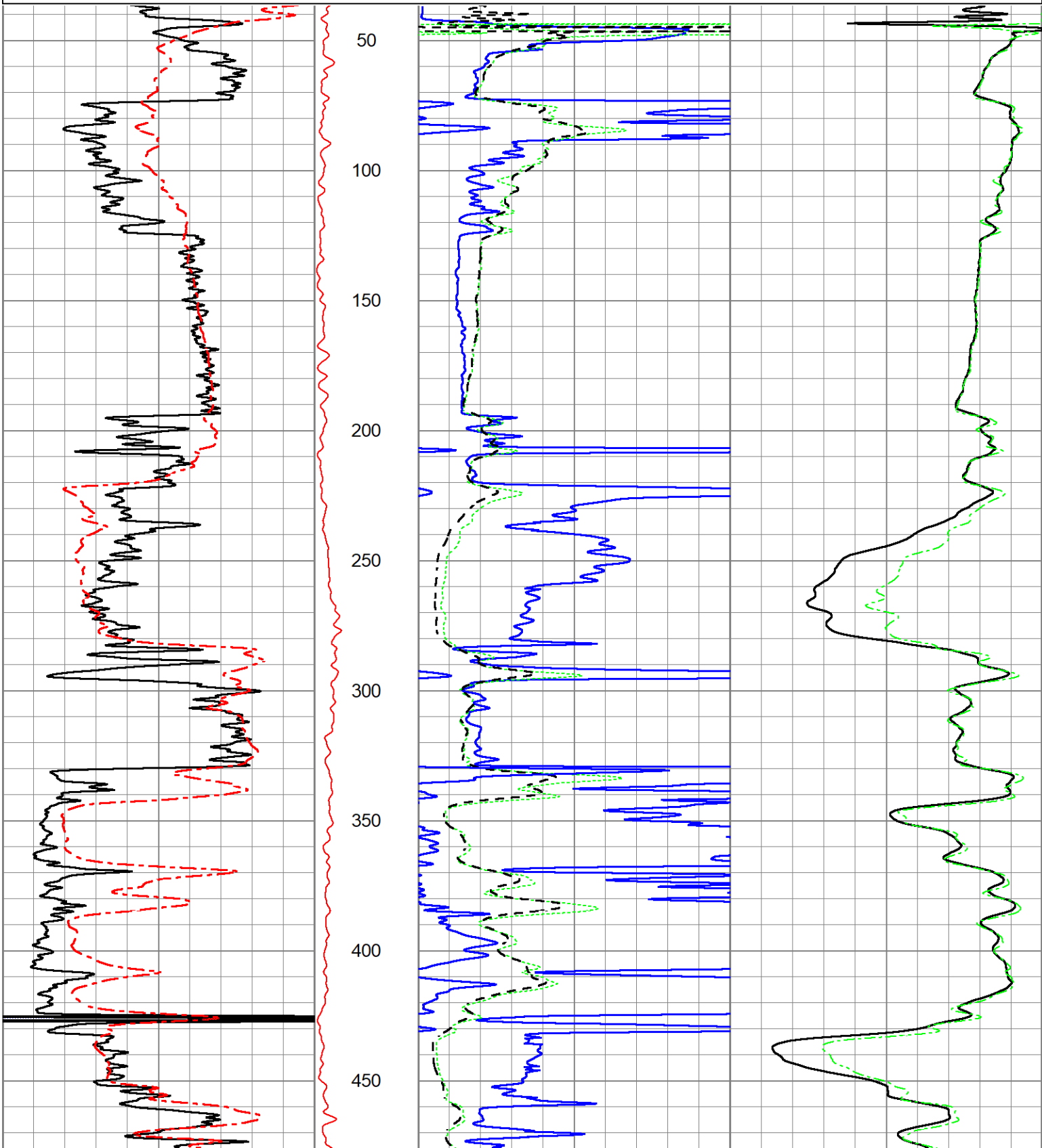
FILE # OW2-8917 CHEROKEE
 THANK YOU FOR USING OSAGE WIRELINE

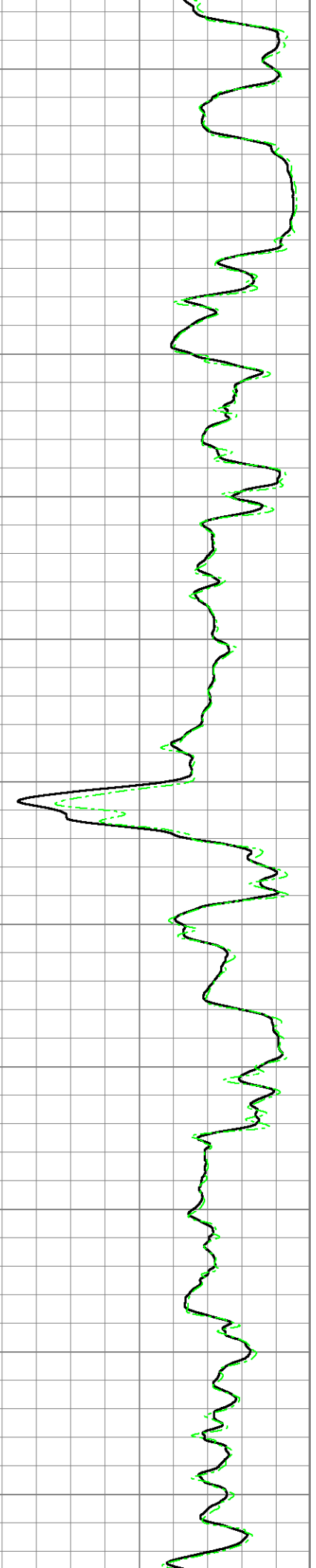
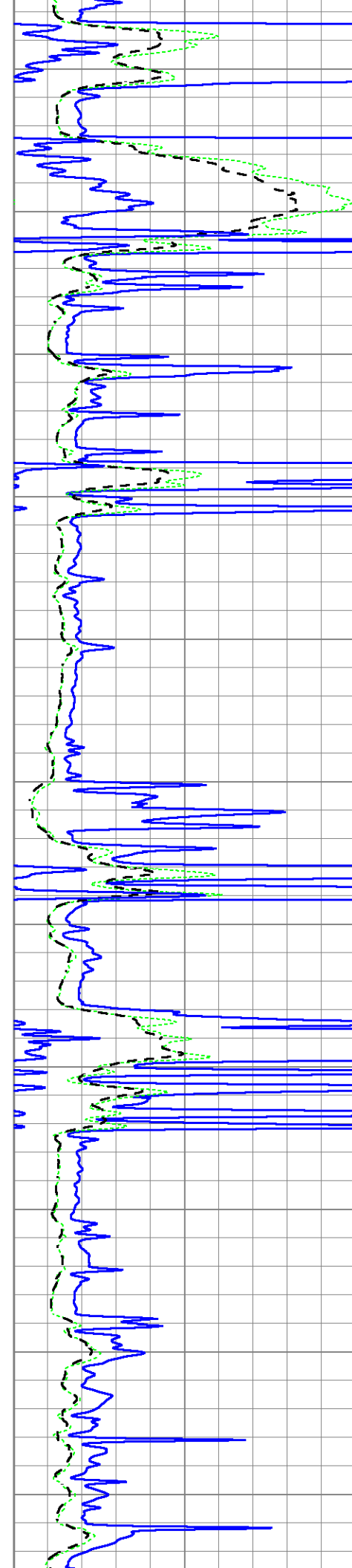
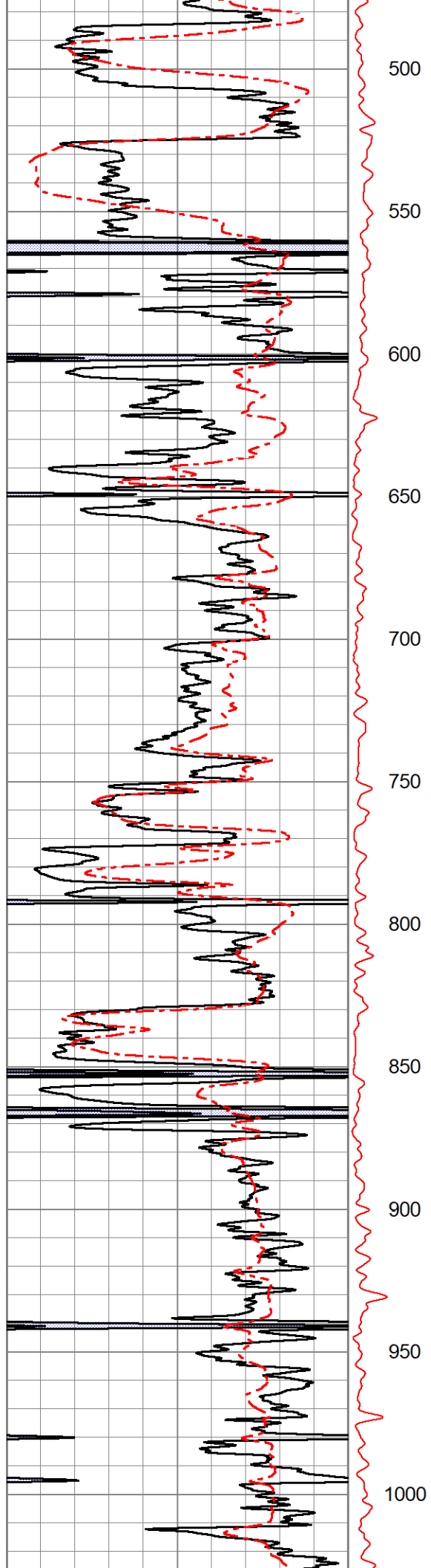


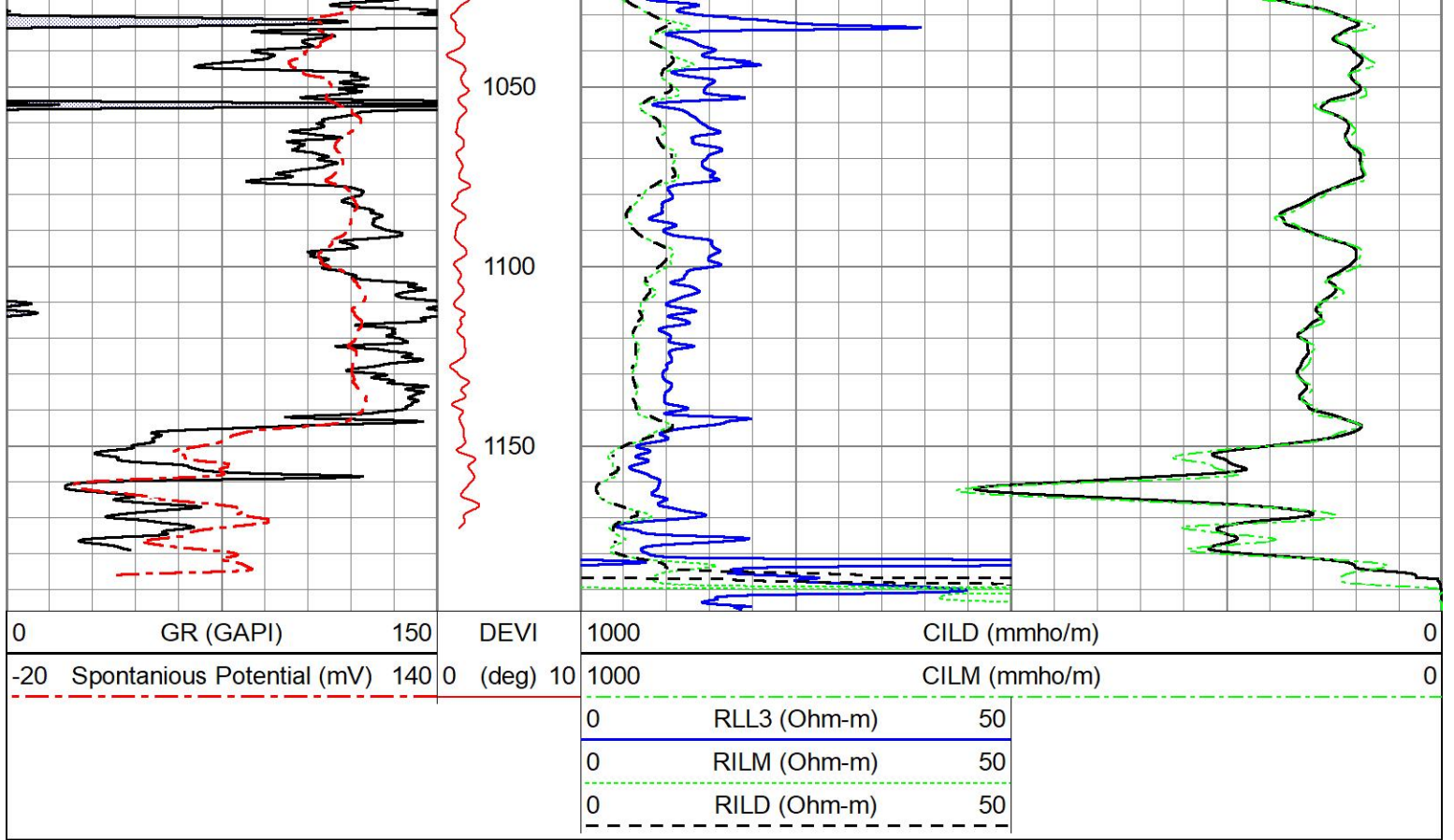
2" DUAL INDUCTION LOG

Database File ow2-8917 cherokee.db
 Dataset Pathname pass2.1
 Presentation Format mmdil2
 Dataset Creation Wed Dec 01 11:58:45 2021
 Charted by Depth in Feet scaled 1:600

0	GR (GAPI)	150	DEVI	1000	CILD (mmho/m)	0
-20	Spontaneous Potential (mV)	140	0 (deg)	1000	CILM (mmho/m)	0
				0	RLL3 (Ohm-m)	50
				0	RILM (Ohm-m)	50
				0	RILD (Ohm-m)	50



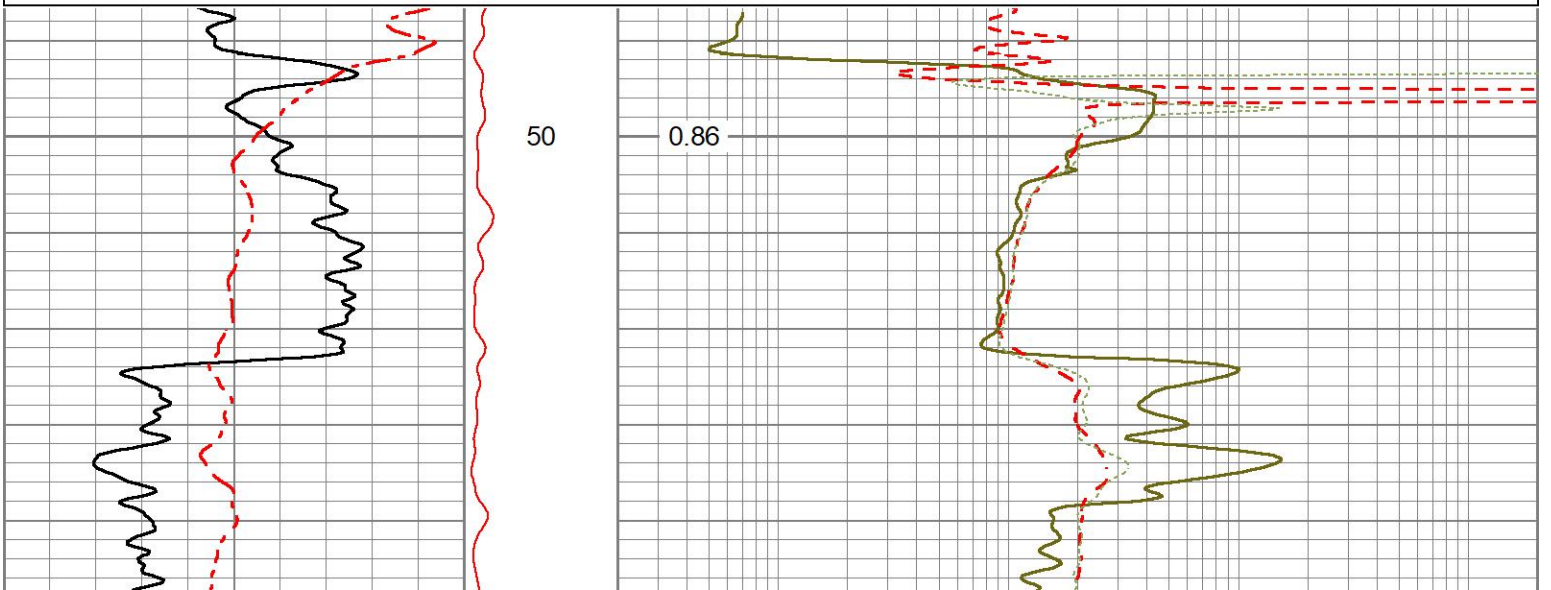


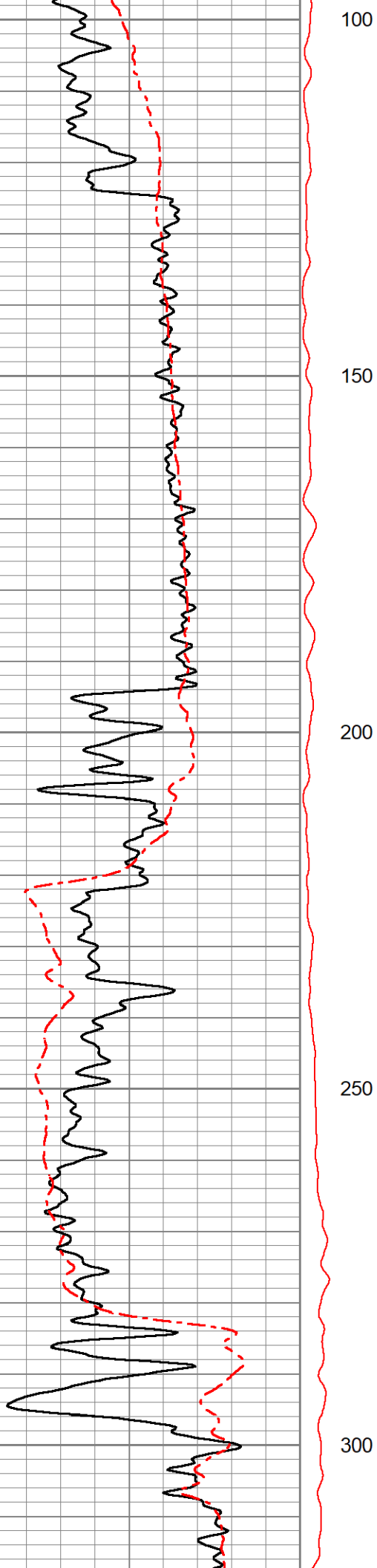


5" DUAL INDUCTION LOG

Database File ow2-8917 cherokee.db
 Dataset Pathname pass2.2
 Presentation Format mmdil5
 Dataset Creation Wed Dec 01 11:59:15 2021
 Charted by Depth in Feet scaled 1:240

0	Gamma Ray (GAPI)	150	DEVI	0.2	Shallow Resistivity (Ohm-m)	2000
-20	Spontaneous Potential (mV)	140	0 (deg)	0.2	Deep Resistivity (Ohm-m)	2000
				0.2	Medium Resistivity (Ohm-m)	2000
				DEVI (deg)		





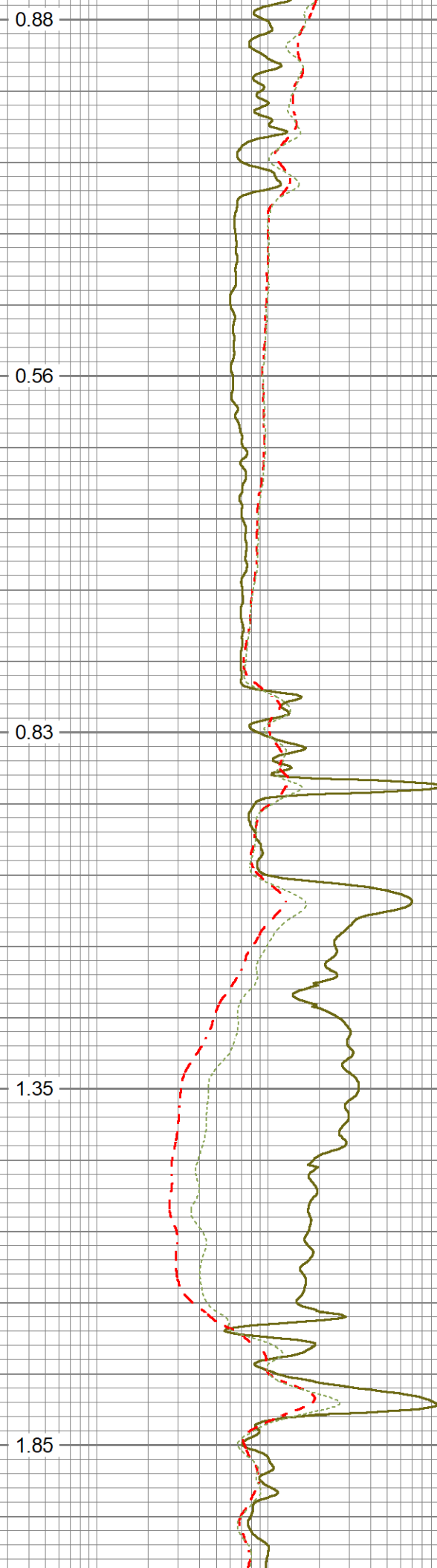
100

150

200

250

300



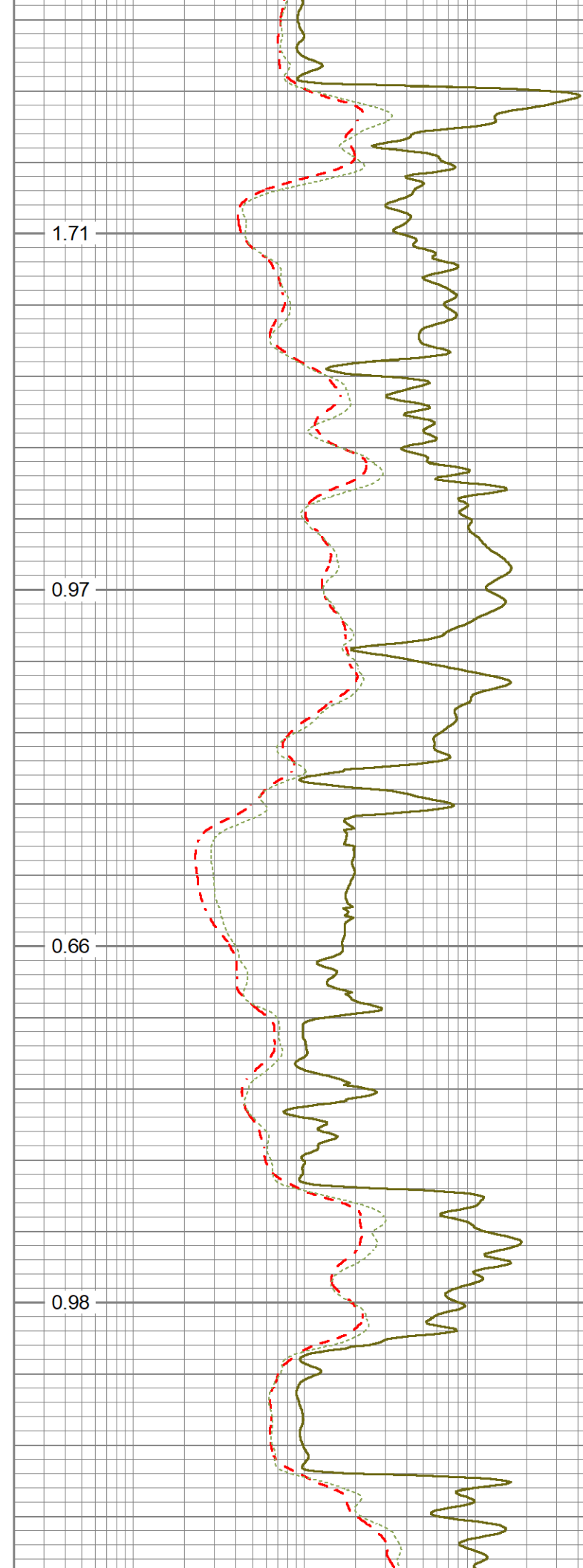
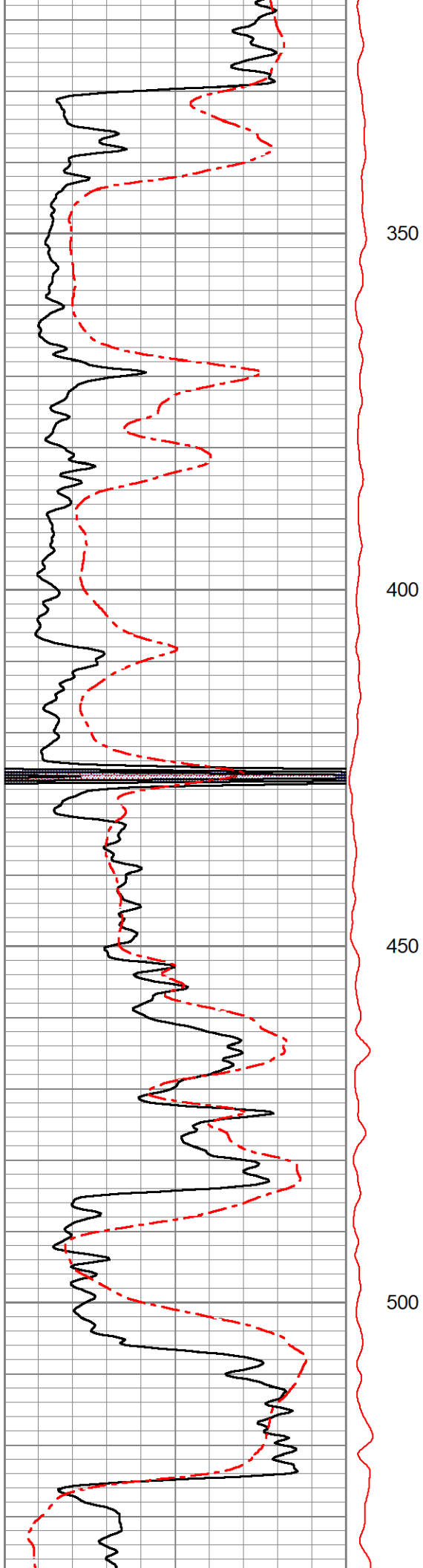
0.88

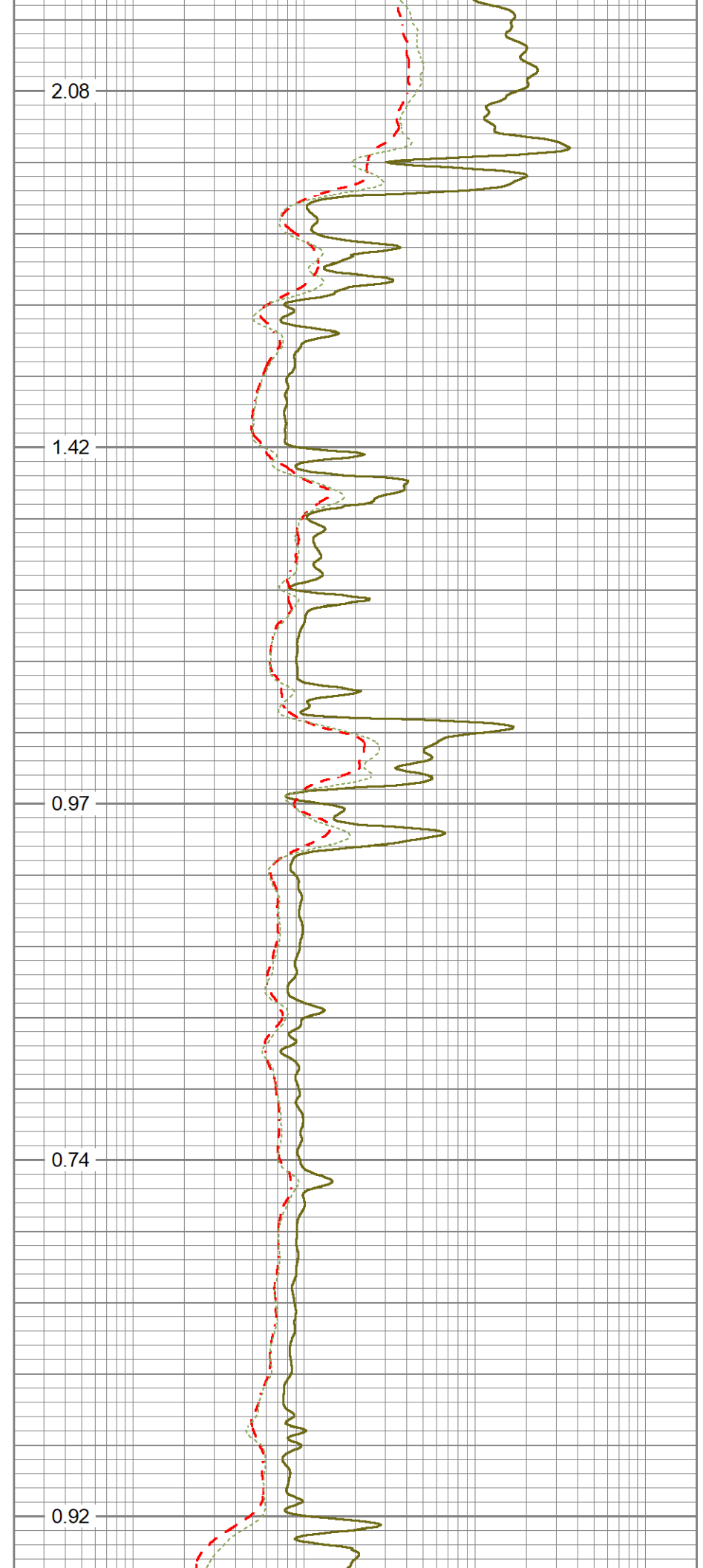
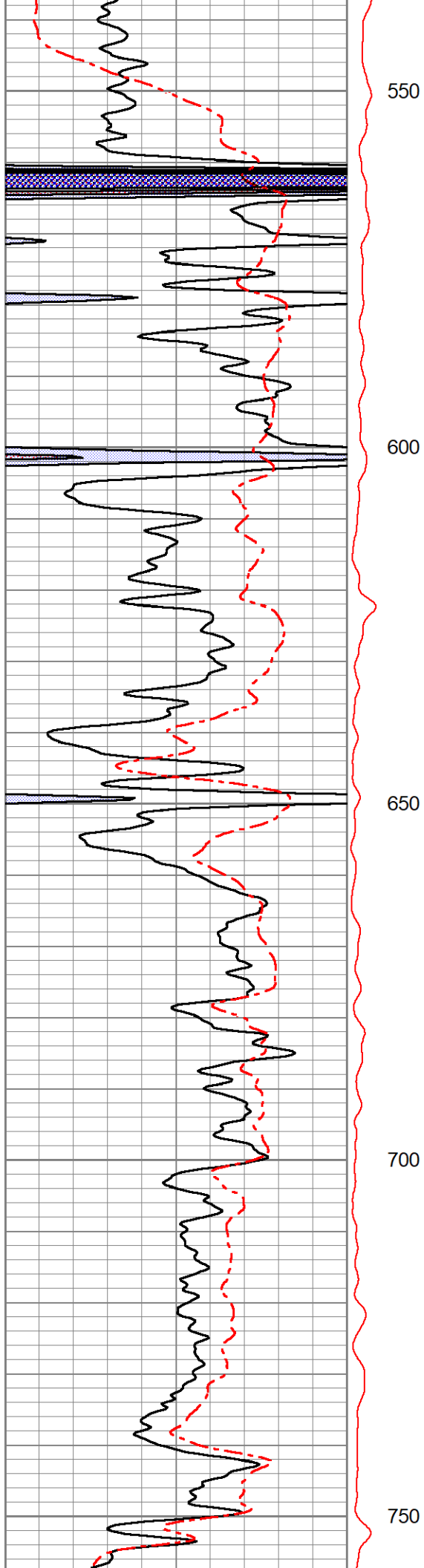
0.56

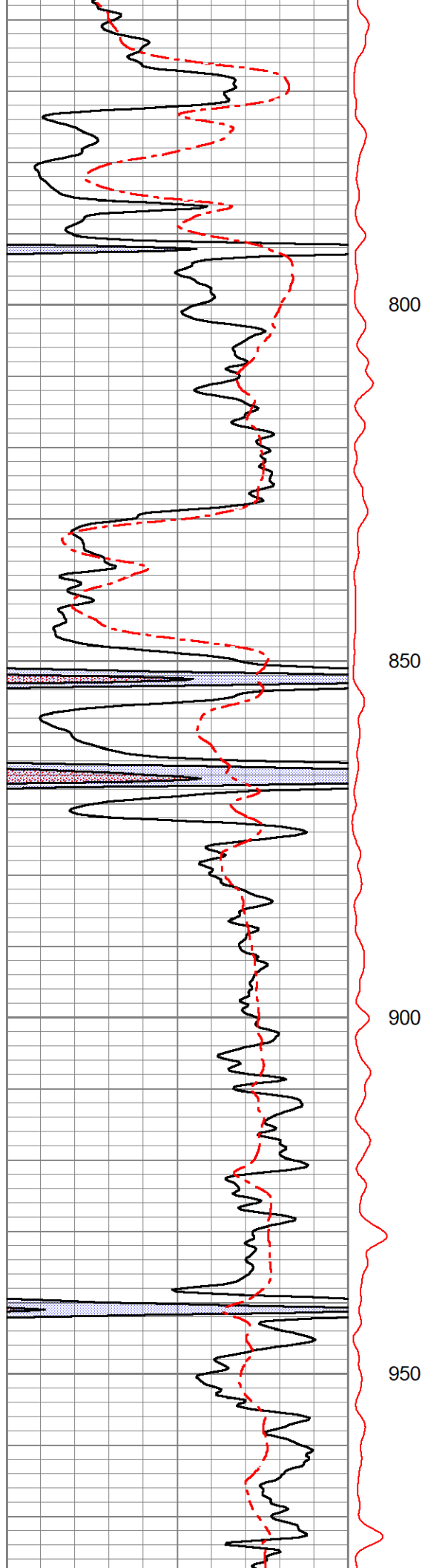
0.83

1.35

1.85





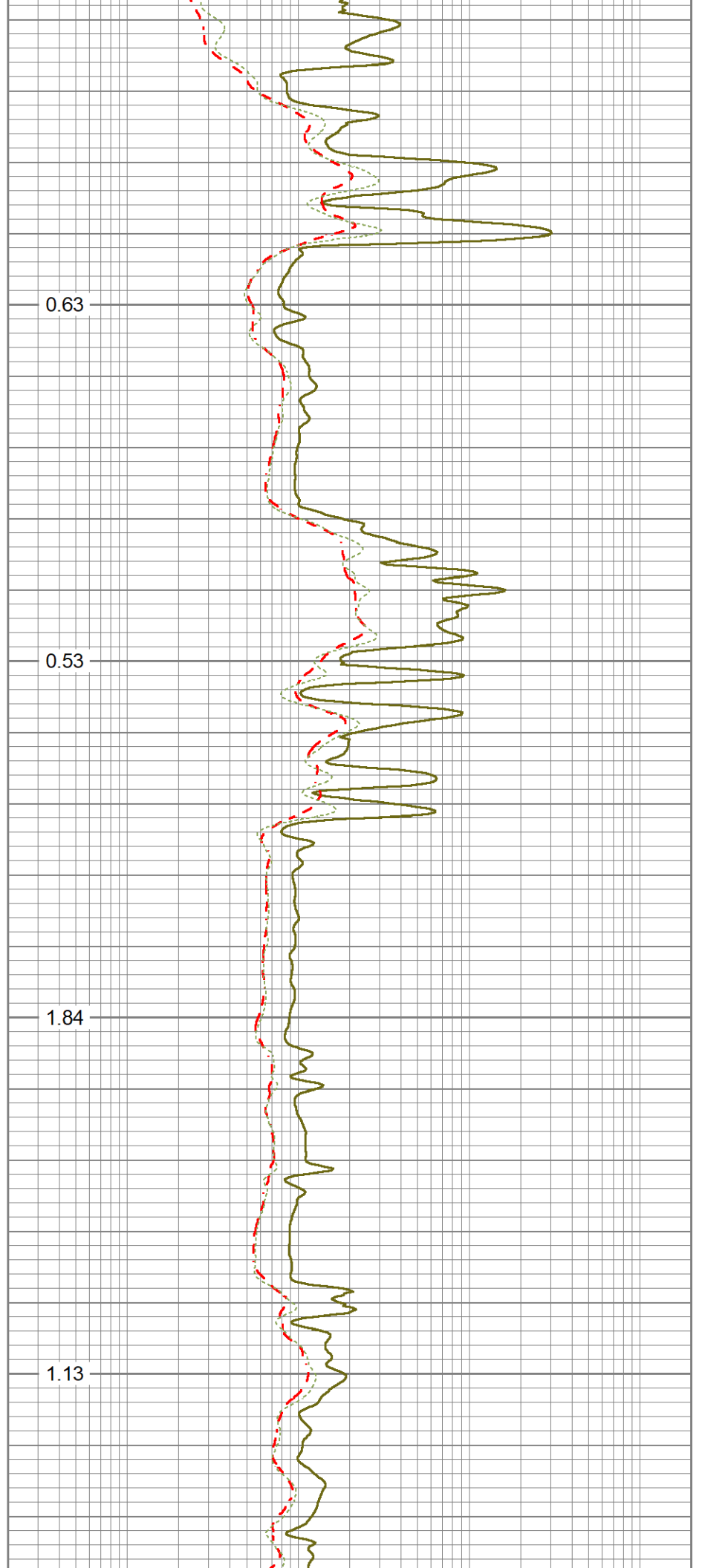


800

850

900

950

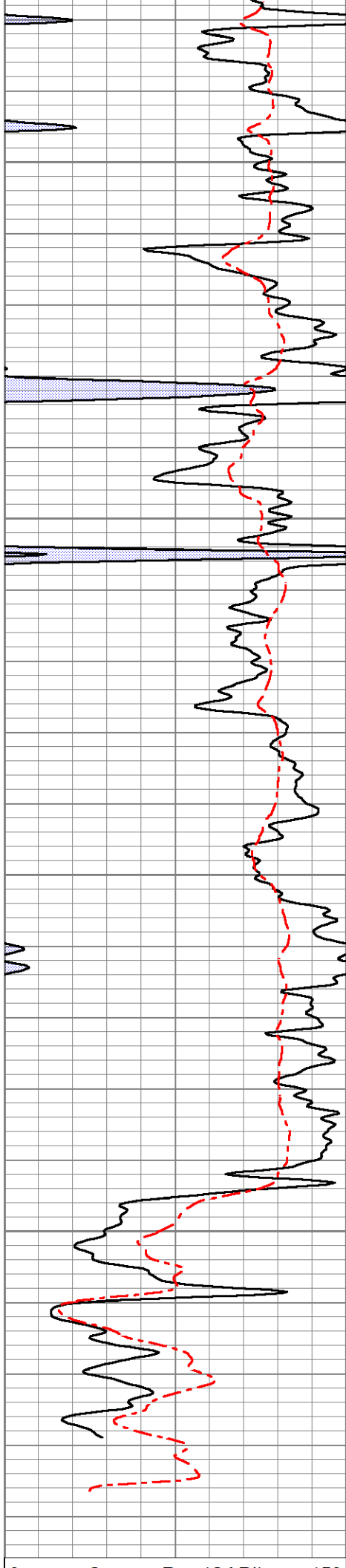


0.63

0.53

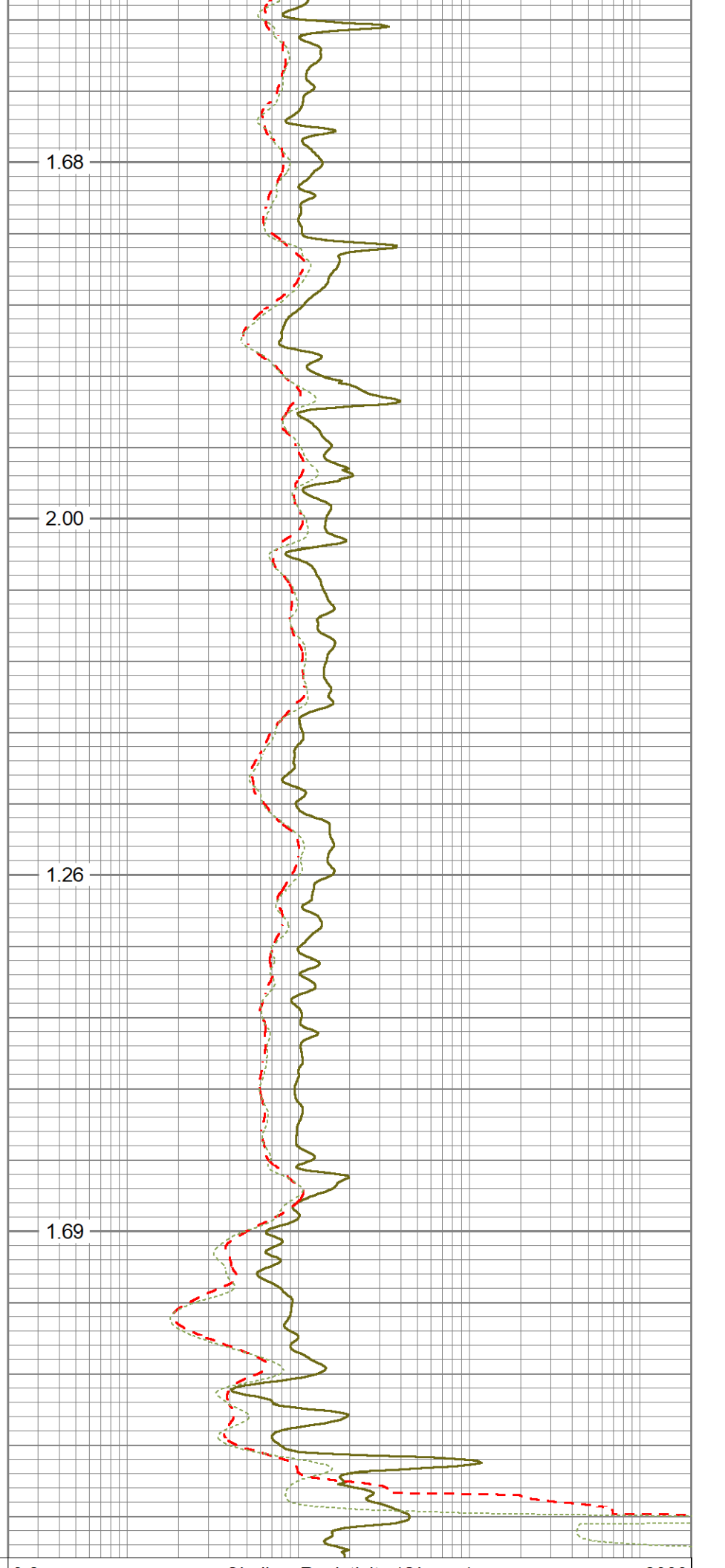
1.84

1.13




1000
1050
1100
1150

1.68
2.00
1.26
1.69



0	Gamma Ray (GAPI)	150	DEVI	0.2	Shallow Resistivity (Ohm-m)	2000	
-20	Spontaneous Potential (mV)	140	0	10	0.2	Deep Resistivity (Ohm-m)	2000
					0.2	Medium Resistivity (Ohm-m)	2000
					DEVI (deg)		

Sensor	Offset (ft)	Schematic	Description	Length (ft)	O.D. (in)	Weight (lb)
			Cable-CableHead Isulation Sub	1.42	3.00	20.00
CILD SP	10.92 10.42		DIL-GEAR (158) Dual Induction Electrical Log	21.36	4.00	395.00
CILM	7.00					
RLL3	1.65					

Dataset: ow2-8917 cherokee.db: field/well/run1/pass2
 Total length: 22.78 ft
 Total weight: 415.00 lb
 O.D.: 4.00 in