



# MICRO RESISTIVITY LOG

Company	Palomino Petroleum	Well	Spectre #2	Field	L. T. P. NORTH	County	Ness	State	Kansas
Location:	330' FNL & 1618 FNL	AP#	15 135 26126	Other Services	DIL CNL BVL	Permanent Datum	Log Measured From	Ground Level	Elevation
Date	11/23/21	Run Number	Two	Depth Logged	4450'	Bottom Logged Interval	3500'	Casein Driller	2 1/4"
Casein Logger	7 7/8"	BI Size	8.58" @ 214'	Density / Viscosity	Chemical	Type Fluid in Hole	9.358	Chemical	Chlorides 3000 ppm
Source of Sample	1.1 @ 1026'	Run @ Mass	1.0mp	Run @ Mass	1.0mp	Run @ Mass	1.0mp	Run @ Mass	1.0mp
Source of Run / Rms	2.1 @ 1026'	Run @ RHT	Casein	Time Circulation Stopped	6:45 a.m.	Time Logger on Section	12:45 p.m.	Equipment Number	1085
Recorded By	C. Patterson	Witnessed By	M. Andrew Strickel						

All interpretations are opinions based on inferences from electrical or other measurements and we cannot and do not guarantee the accuracy or correctness of any interpretation, and we shall not, except in the case of gross or willful negligence on our part, be liable or responsible for any loss, costs, damages, or expenses incurred or sustained by anyone resulting from any interpretation made by any of our officers, agents or employees. These interpretations are also subject to our general terms and conditions set out in our current Price Schedule.

### Comments

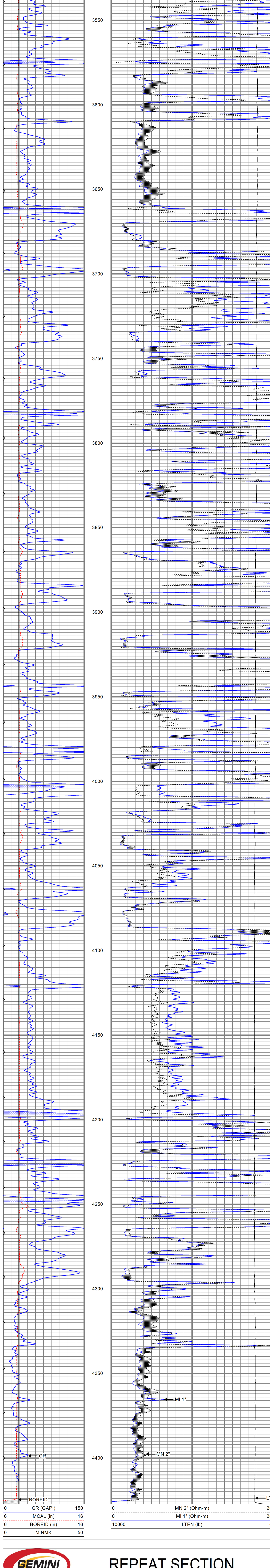
Ness City, KS 96 Hwy & 283 Hwy 4.6 mi West to County Rd 533,  
Then North 3 mi. to 160 Rd/R Rd., Then 1/2 mi West on 160 Rd/R Rd.,  
South into Location

LAT/LONG  
38.4923935,-100.0038384

Thank You for using Gemini Wireline LLC  
785-625-1182

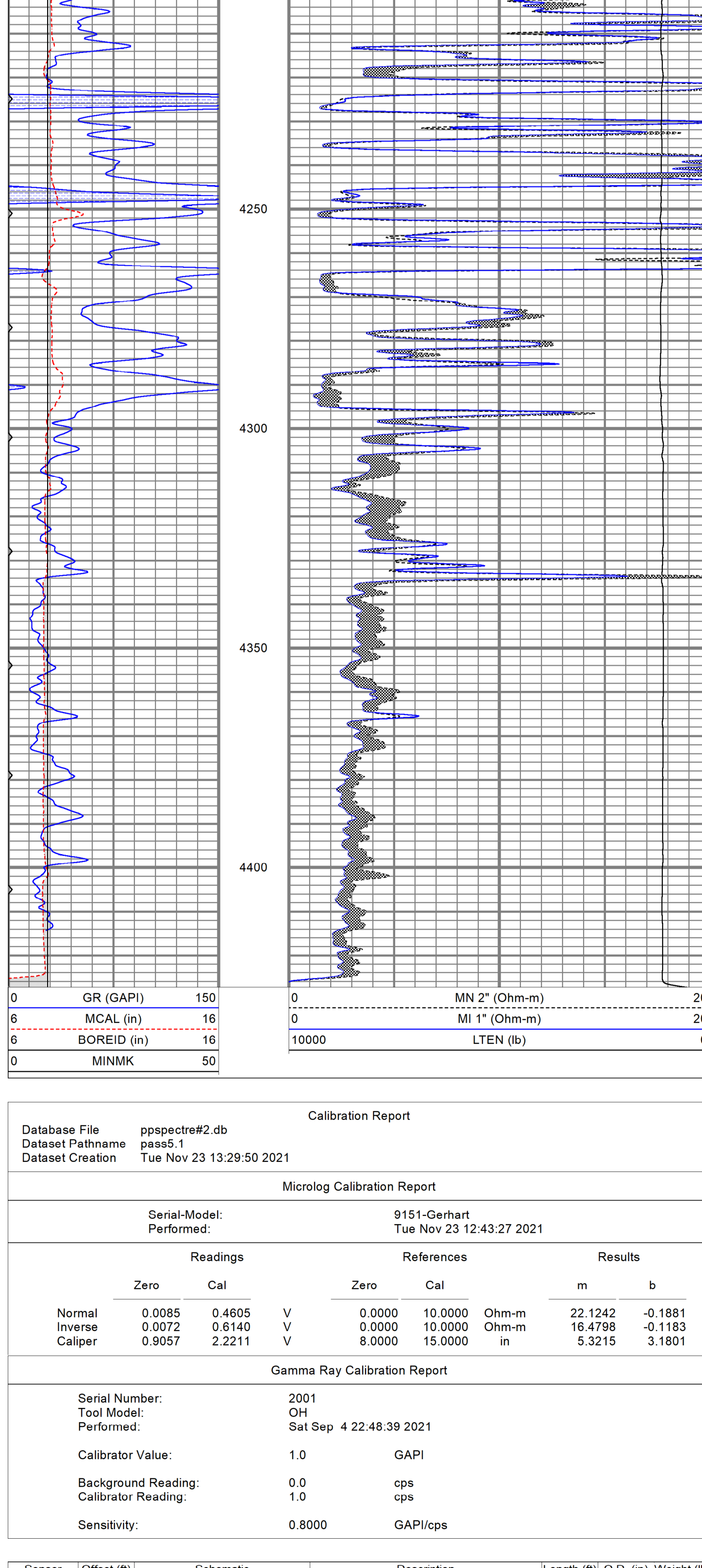
## MAIN PASS

Database File	ppspectre#2.db
Dataset Pathname	pass5.1
Presentation Format	kml
Dataset Creation	Tue Nov 23 13:29:50 2021
Charted by	Depth in Feet scaled 1:240



## REPEAT SECTION

Database File	ppspectre#2.db
Dataset Pathname	pass4.1
Presentation Format	kml
Dataset Creation	Tue Nov 23 12:57:40 2021
Charted by	Depth in Feet scaled 1:240



### Calibration Report

Database File	ppspectre#2.db
Dataset Pathname	pass5.1
Dataset Creation	Tue Nov 23 13:29:50 2021

#### Microlog Calibration Report

Serial-Model:	9151-Gerhart	Performed:	Tue Nov 23 12:43:27 2021					
Readings	Zero	Cal	Results					
Normal	0.0085	0.4605	V	0.0000	10.0000	Ohm-m	22.1242	-0.1881
Inverse	0.0072	0.6140	V	0.0000	10.0000	Ohm-m	16.4798	-0.1183
Caliper	0.9057	2.2211	V	8.0000	15.0000	In	5.3215	3.1801

#### Gamma Ray Calibration Report

Serial Number:	2001	OH
Tool Model:	OH	Sat Sep 4 22:48:39 2021
Performed:		
Calibrator Value:	1.0	GAPI
Background Reading:	0.0	cps
Calibrator Reading:	1.0	cps
Sensitivity:	0.8000	GAPI/cps

Sensor	Offset (ft)	Schematic	Description	Length (ft)	O.D. (in)	Weight (lb)
GR	10.63		CHD-None	0.75	1.50	5.00
			GR-OH (2001) 2001	3.56	3.25	40.00
MCAL	1.83		ML-Gerhart (9151) Gerhart Micro	9.46	4.00	125.00
MI	1.83					
MN	1.83					

Dataset:	ppspectre#2.db: field/well/run1/pass5.1
Total length:	13.77 ft
Total weight:	170.00 lb
O.D.:	4.00 in