

Company PALOMINO PETROLEUM  
Well SPECTRE #2  
Field L.T.P. NORTH  
County NESS  
State KANSAS

Company PALOMINO PETROLEUM  
Well SPECTRE #2  
Field L.T.P. NORTH  
County NESS  
State KANSAS

Location: API # : 15-135-26126-0000 Other Services

SEC 17 TWP 18S RGE 24W  
330' FNL & 1618' FWL  
Permanent Datum GROUND LEVEL Elevation 2303'  
Log Measured From KELLY BUSHING & A.G.L.  
Drilling Measured From KELLY BUSHING  
Elevation  
K.B. 2311'  
D.F. 2310'  
G.L. 2303'

Date DEC. 2, 2021

Run Number ONE  
Depth Driller 4430'  
Depth Logger 4375'  
Bottom Logged Interval 4374'  
Top Log Interval 2700'  
Open Hole Size 150'  
Type Fluid WATER  
Density / Viscosity ///  
Max. Recorded Temp. 109F  
Estimated Cement Top 2820'  
Time Well Ready ///  
Time Logger on Bottom ///  
Equipment Number PT-09  
Location HAYS  
Recorded By BOB KLAUS  
Witnessed By JOE RUPP

Borehole Record				Tubing Record			
Run Number	Bit	From	To	Size	Weight	From	To
ONE	12.25"	0	214'	214'			
TWO	7.875"	214'	4430'				

Casing Record		Size	Wgt/Ft		Top	Bottom
Surface String	8 5/8"				0	214'
Prot. String						
Production String	5 1/2"				0	
Liner						

<<< Fold Here >>>

All interpretations are opinions based on inferences from electrical or other measurements and we cannot and do not guarantee the accuracy or correctness of any interpretation, and we shall not, except in the case of gross or willful negligence on our part, be liable or responsible for any loss, costs, damages, or expenses incurred or sustained by anyone resulting from any interpretation made by any of our officers, agents or employees. These interpretations are also subject to our general terms and conditions set out in our current Price Schedule.

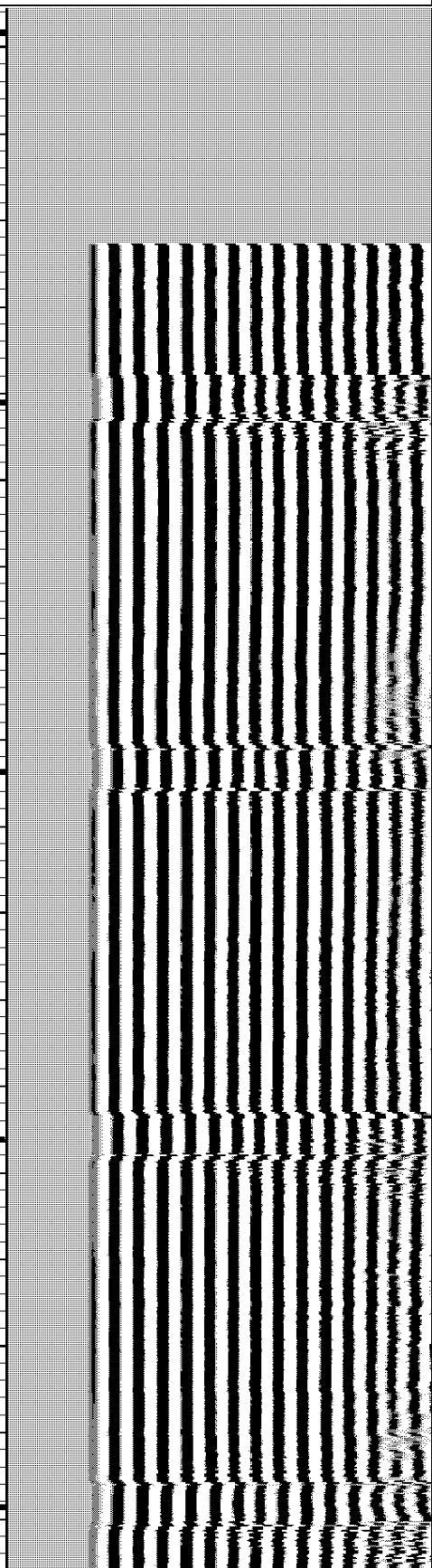
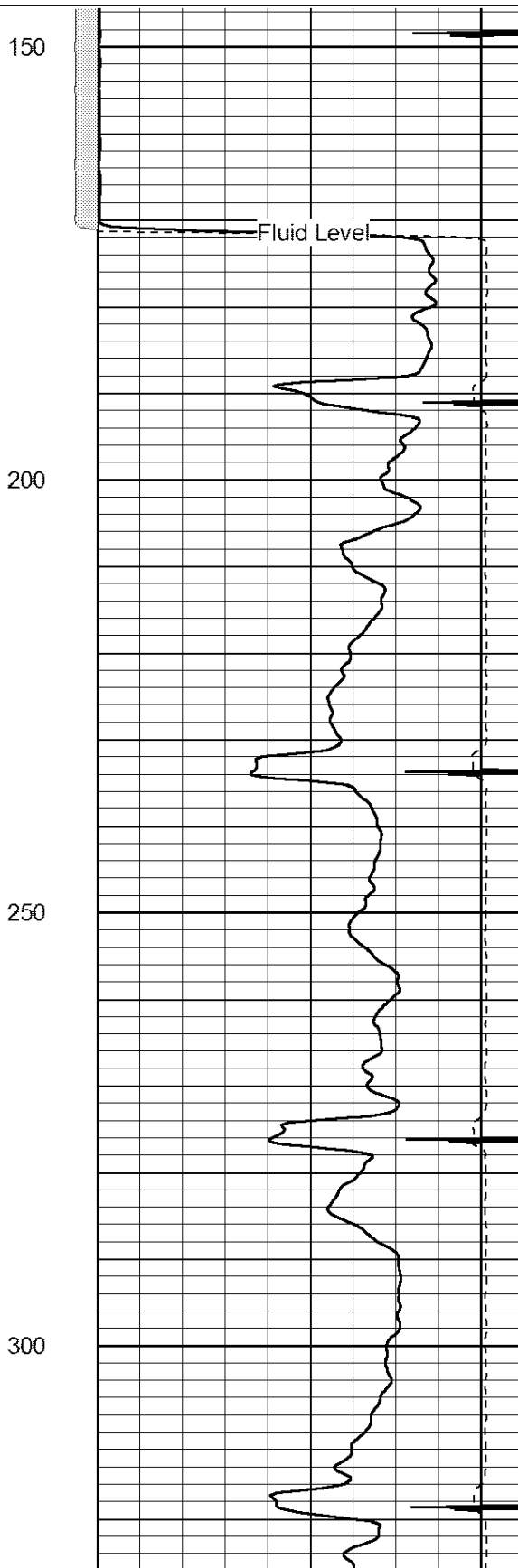
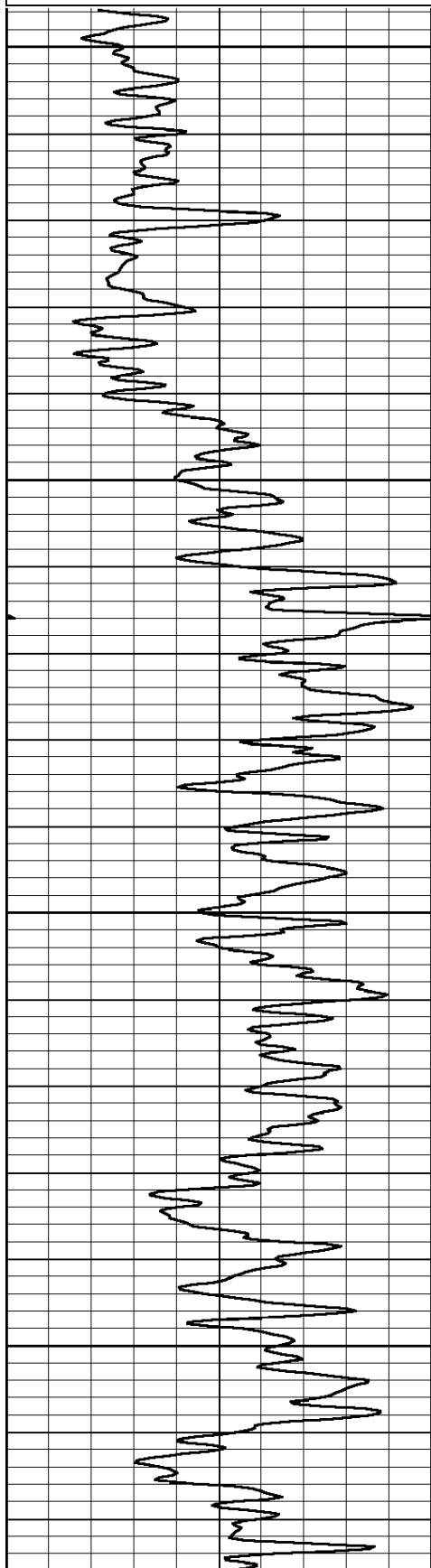
Comments

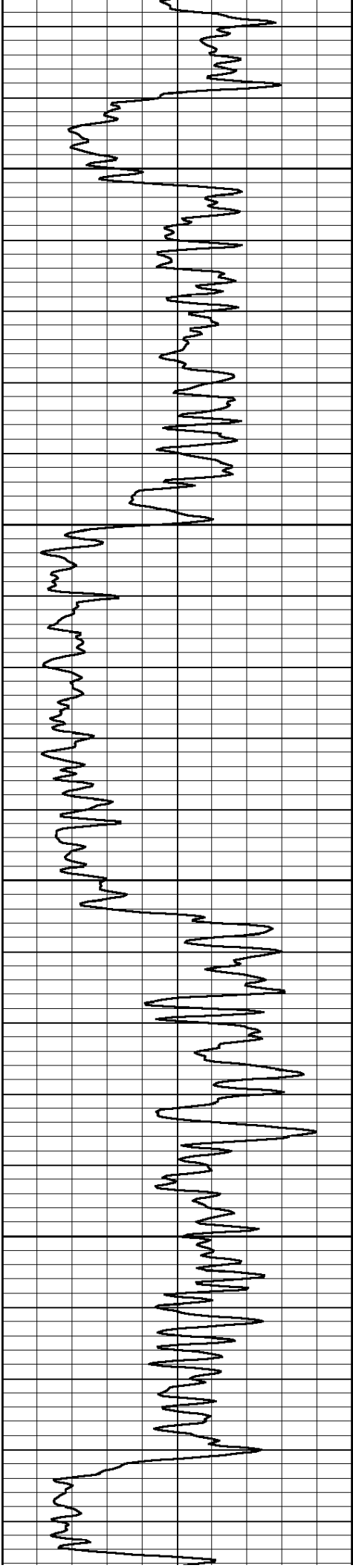
THANK YOU FOR USING  
PERF-TECH WIRELINE SERVICES, INC.  
785-628-3969

DIRECTIONS: NESS CITY, Ks.  
WEST to N Rd, 3 NORTH to 160 Rd,  
1/2 WEST, SOUTH into

Database File: dec22109.db  
 Dataset Pathname: pass6  
 Presentation Format: 3x5  
 Dataset Creation: Thu Dec 02 09:02:51 2021 by Log Std Casedhole 06040  
 Charted by: Depth in Feet scaled 1:240

0	Gamma Ray (GAPI)	150	0	3' AMPLITUDE (mV)	100	200	5' Variable Density	1100
			475	3' TRAVEL TIME (usec)	235			
			9	Collar Locator	-1			



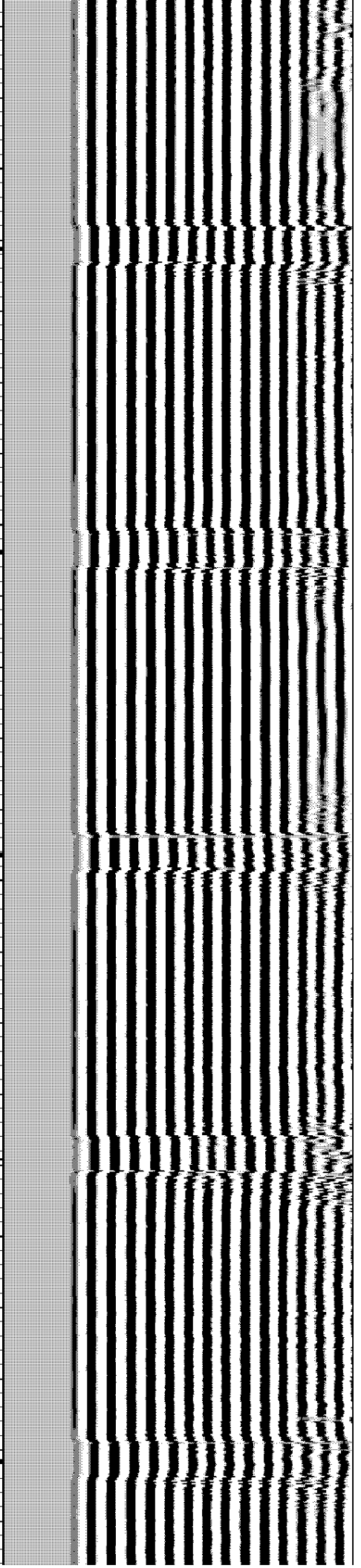
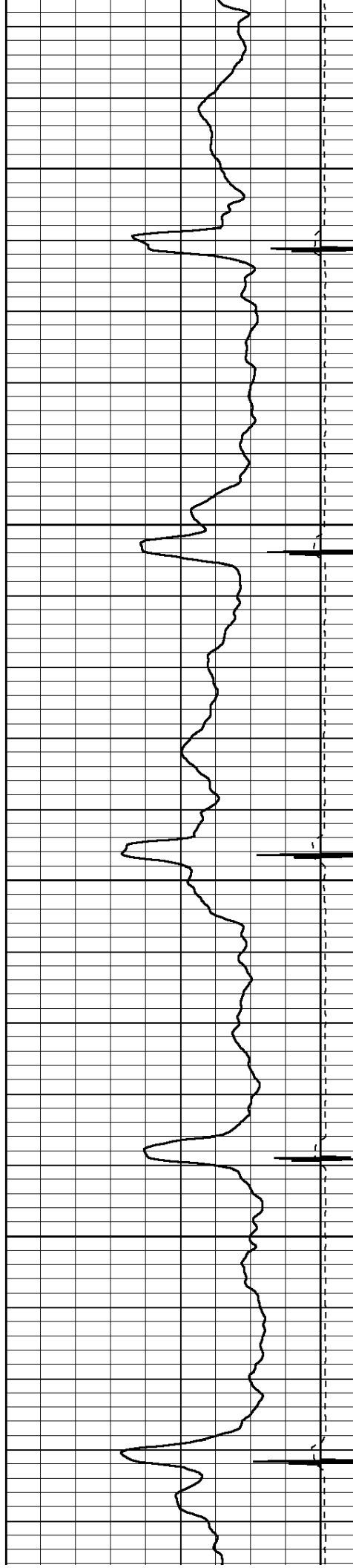


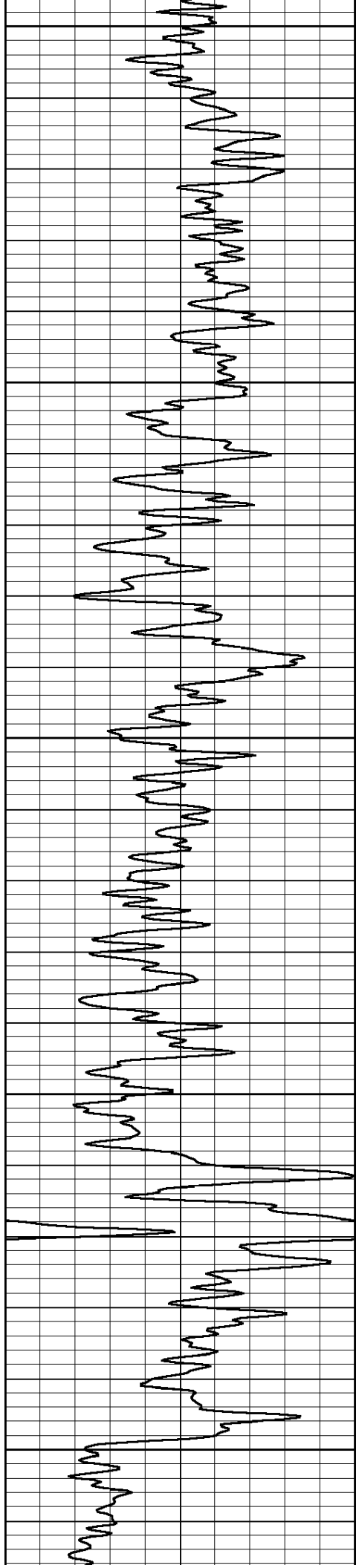
350

400

450

500





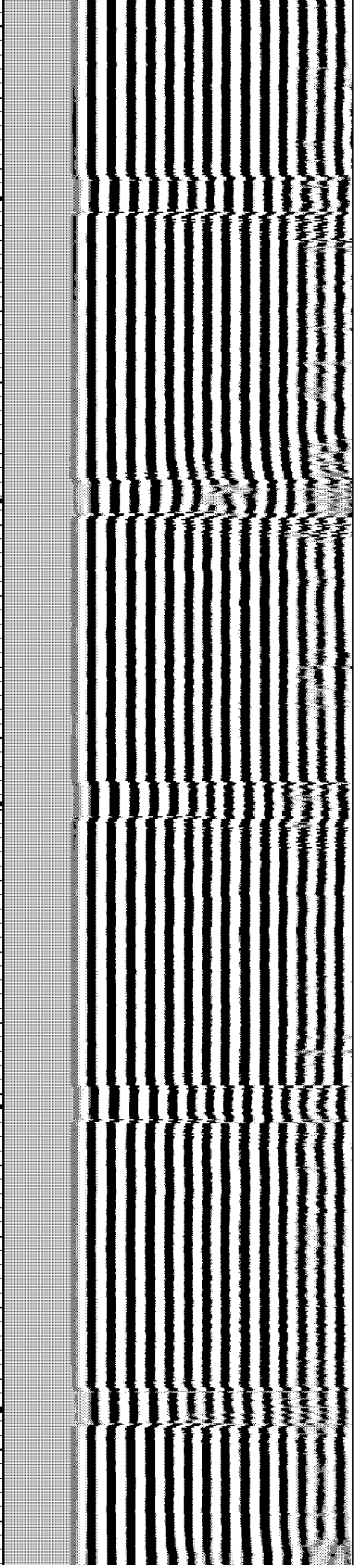
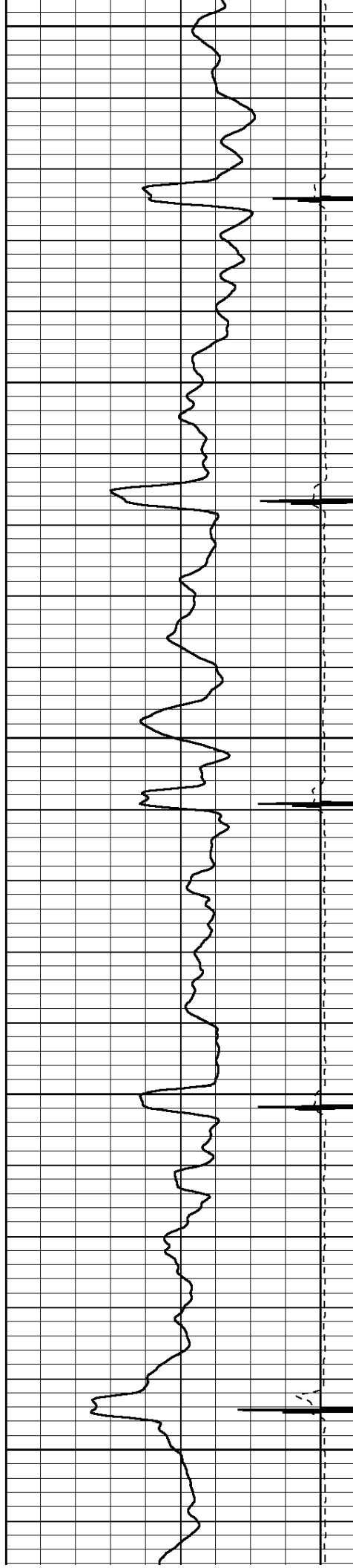
550

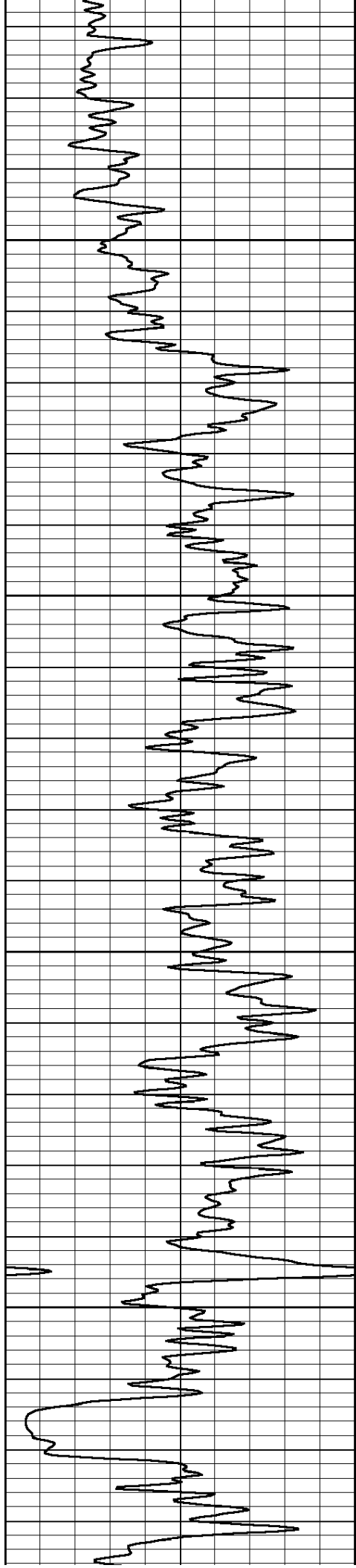
600

650

700

750



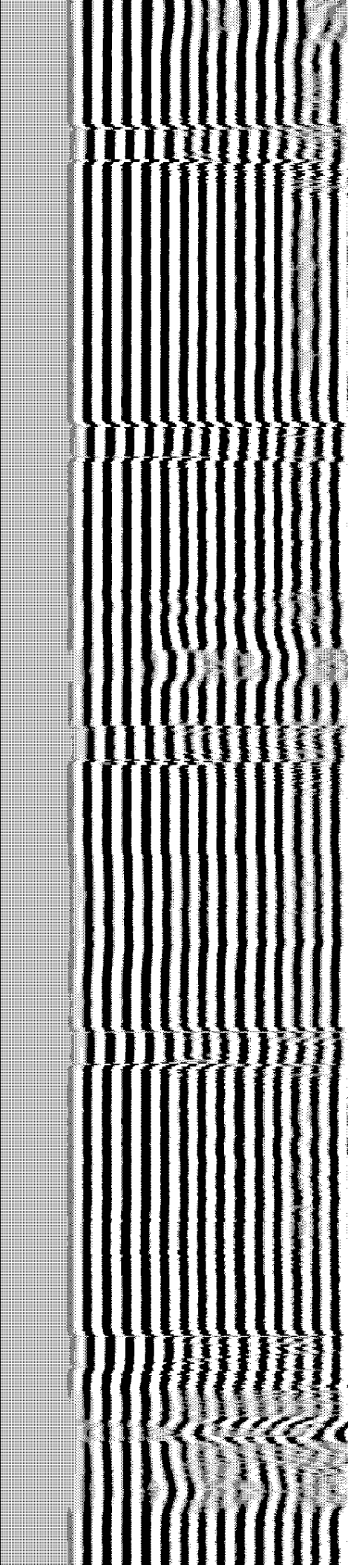
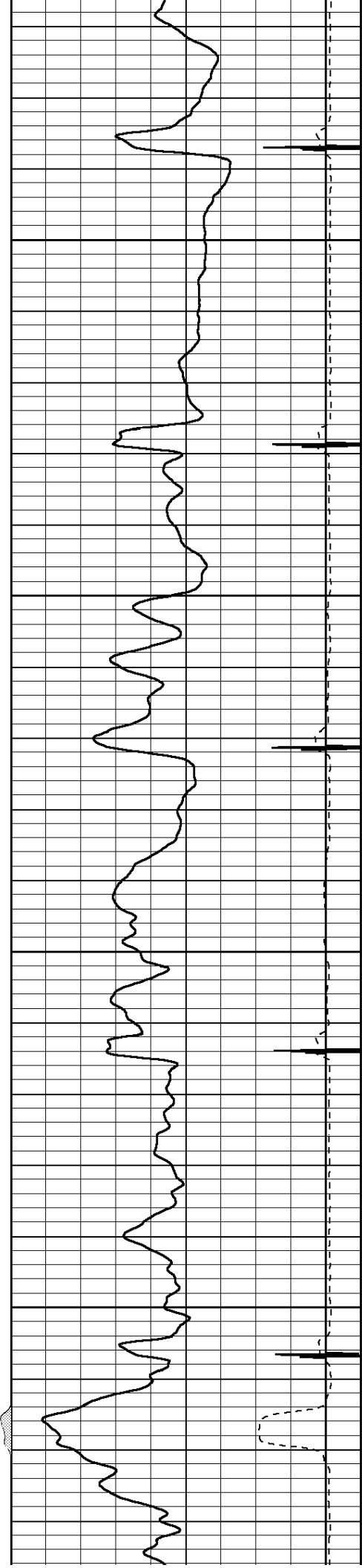


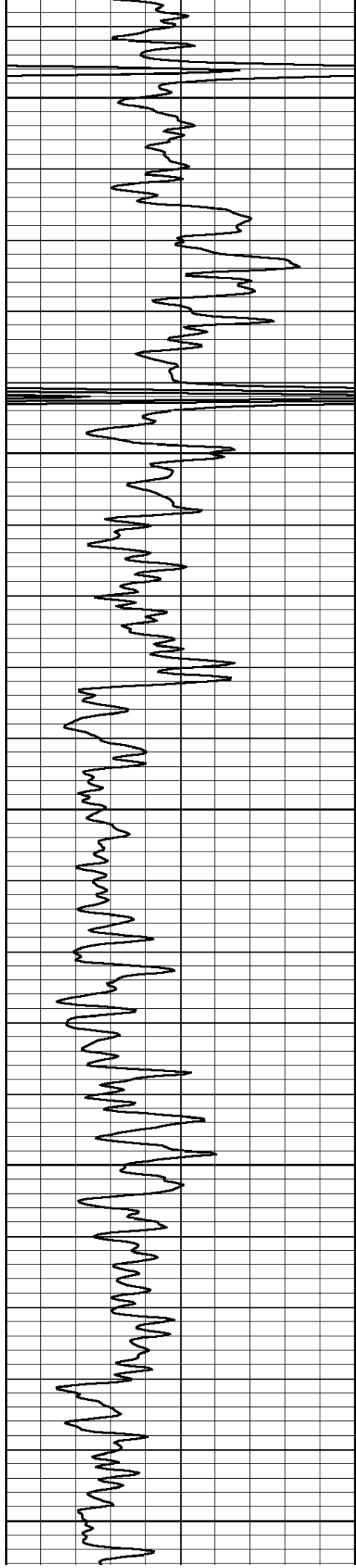
800

850

900

950





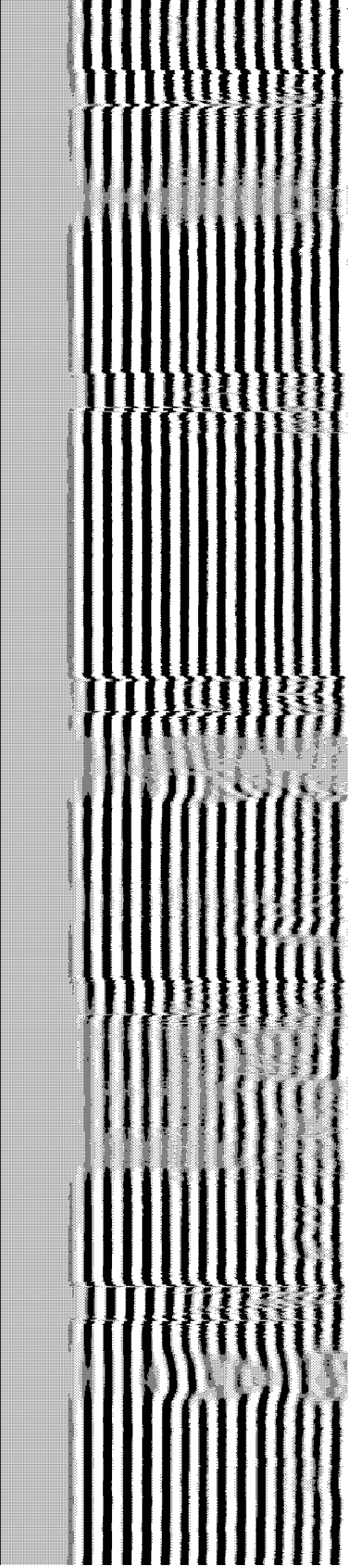
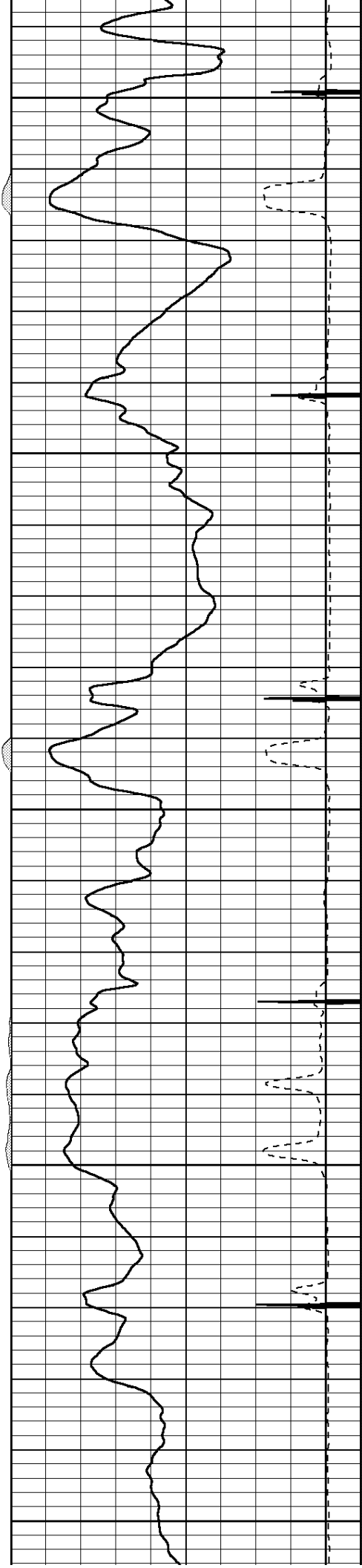
1000

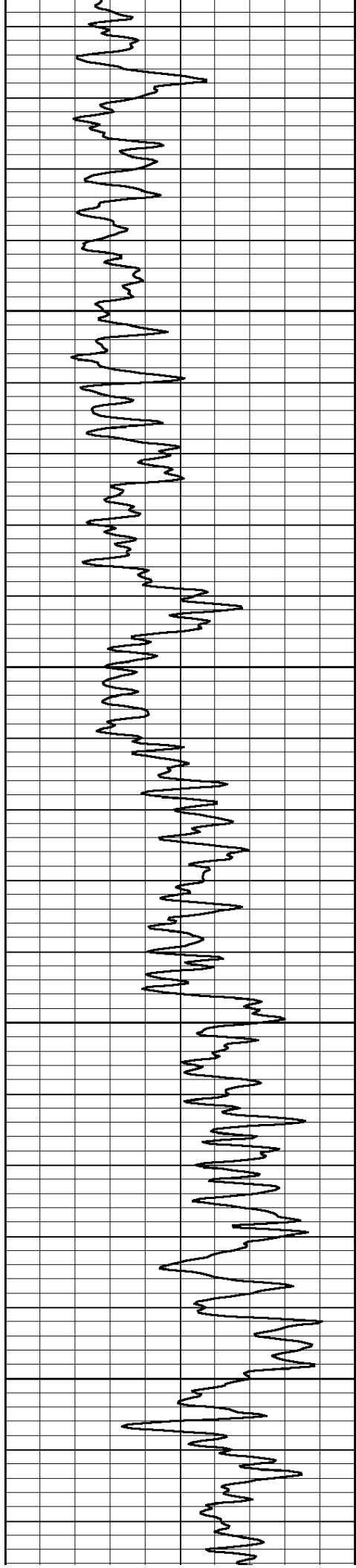
1050

1100

1150

1200



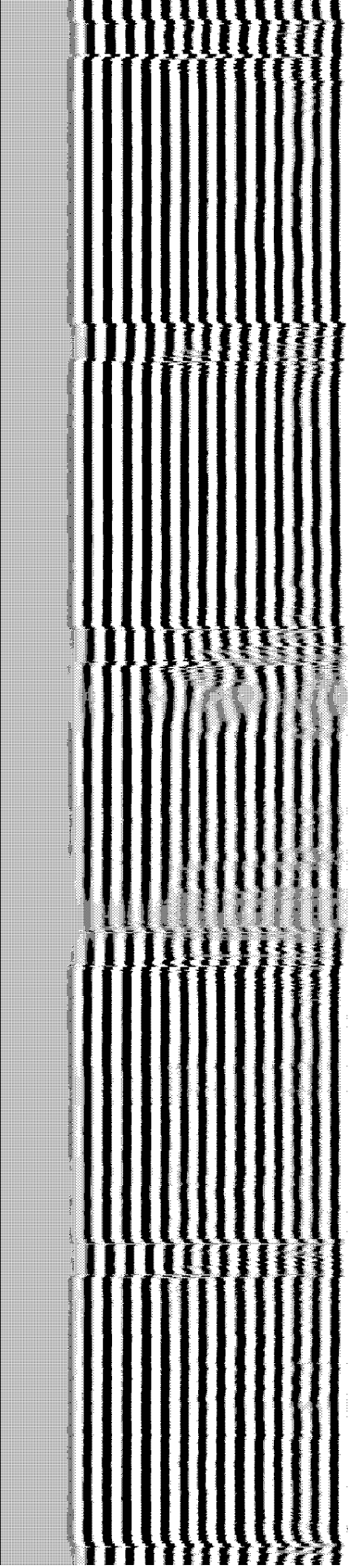
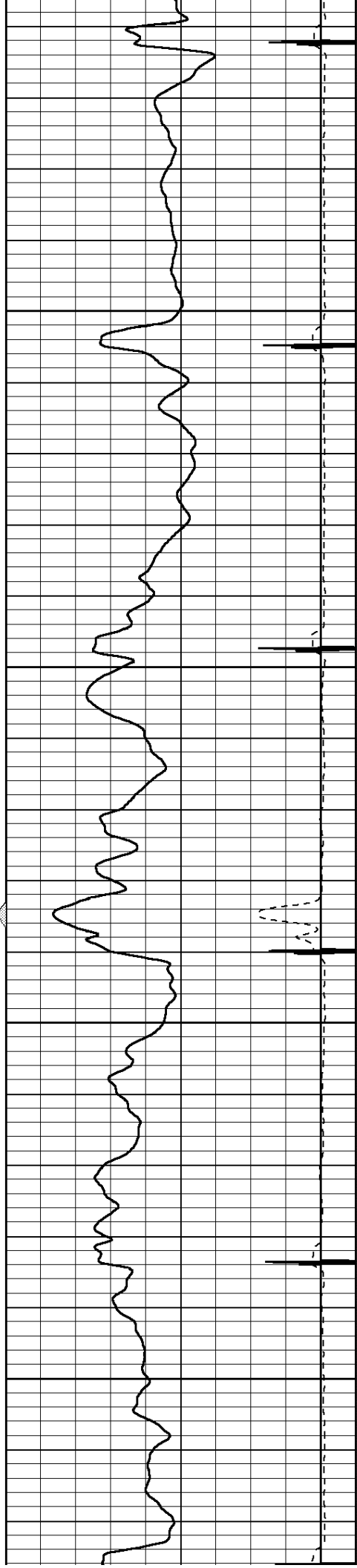


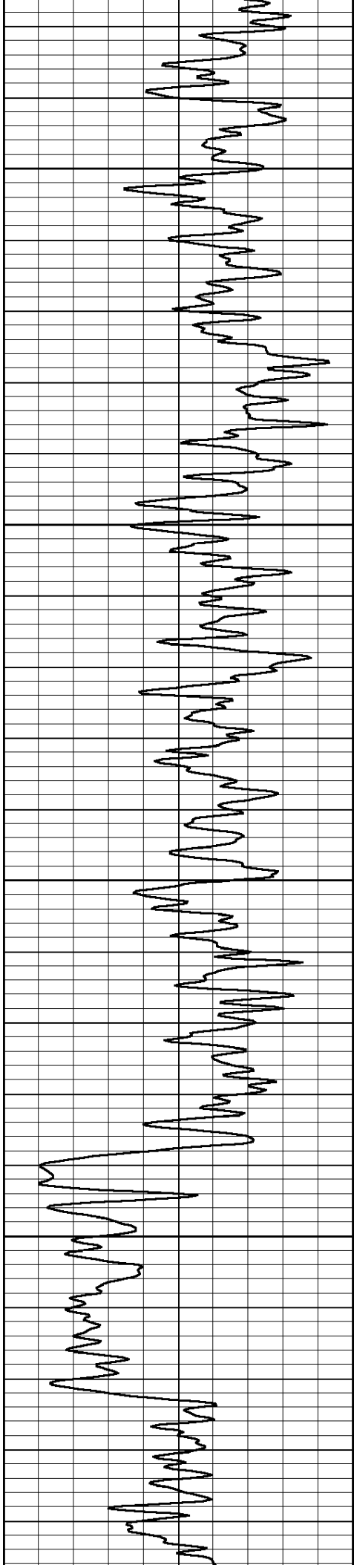
1250

1300

1350

1400





1450

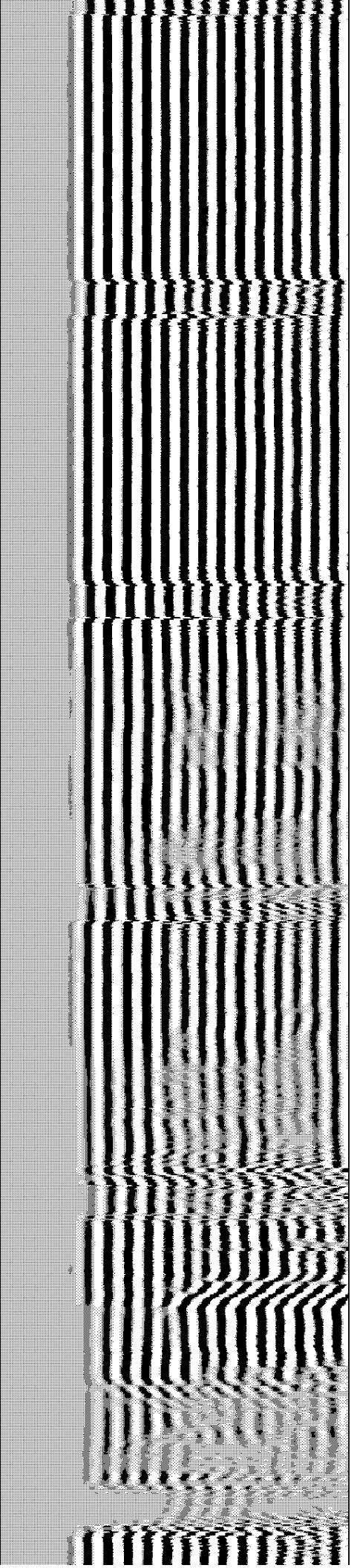
1500

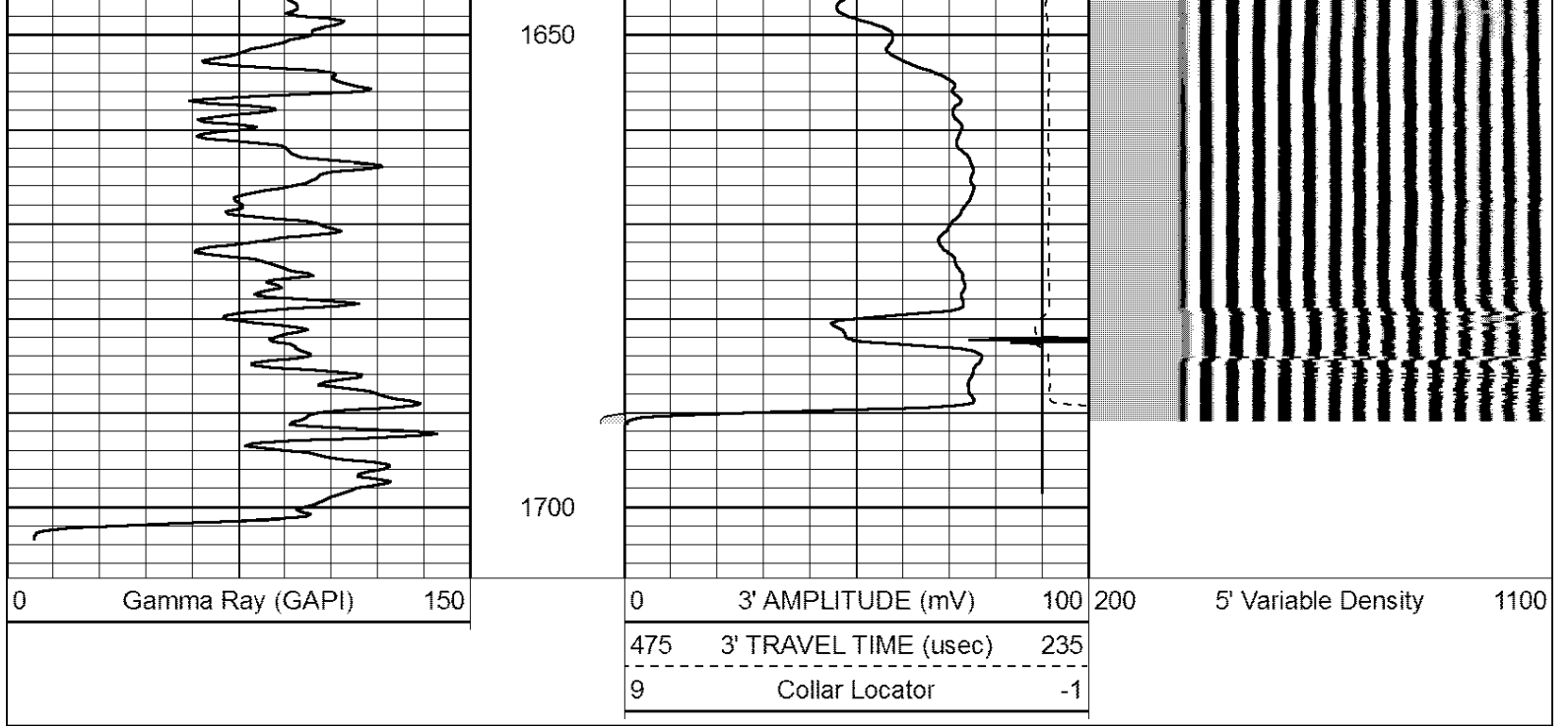
1550

1600



PORT COLLAR

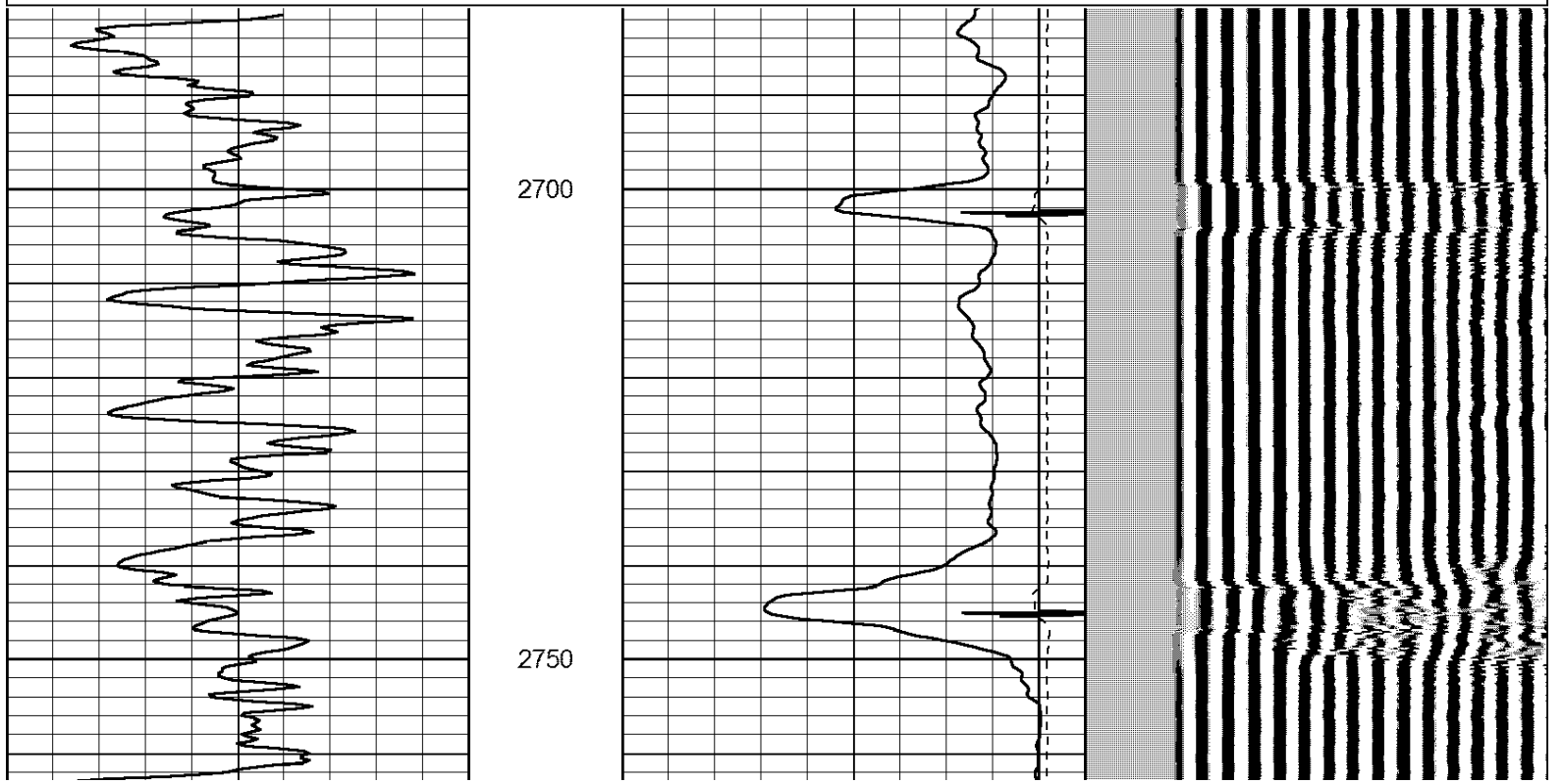
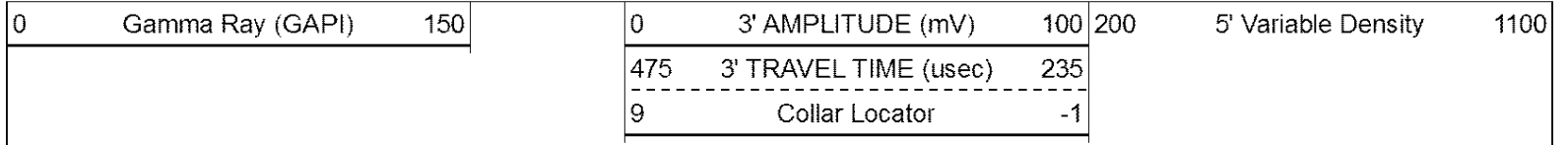


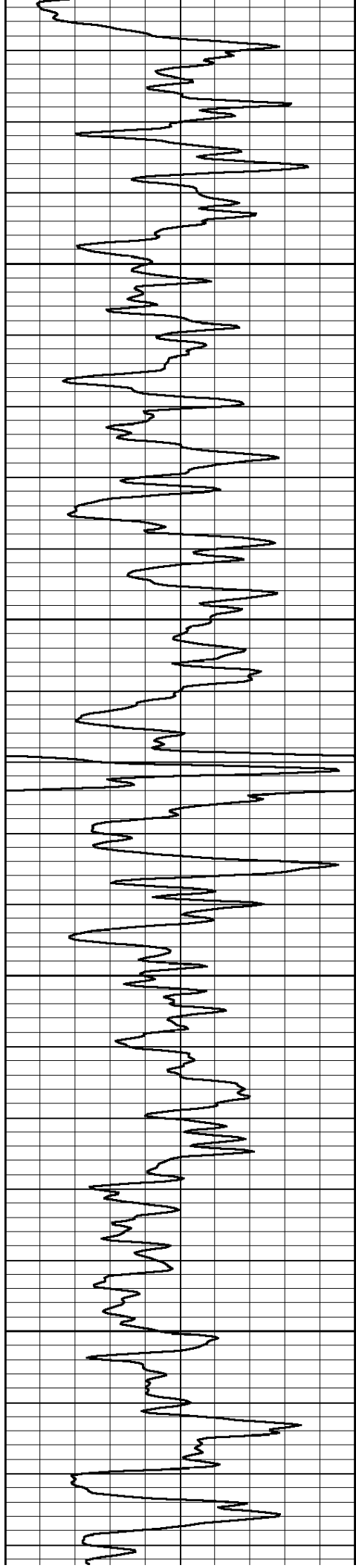


**Perf-Tech**  
Wireline Services, Inc.

# MAIN PASS

Database File: dec22109.db  
 Dataset Pathname: pass5  
 Presentation Format: 3x5  
 Dataset Creation: Thu Dec 02 08:35:48 2021 by Log Std Casedhole 06040  
 Charted by: Depth in Feet scaled 1:240





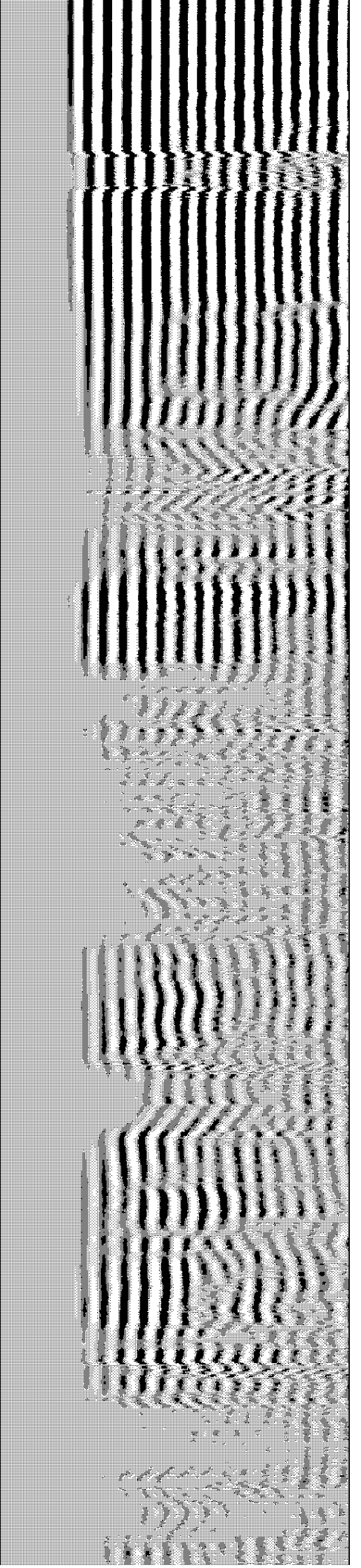
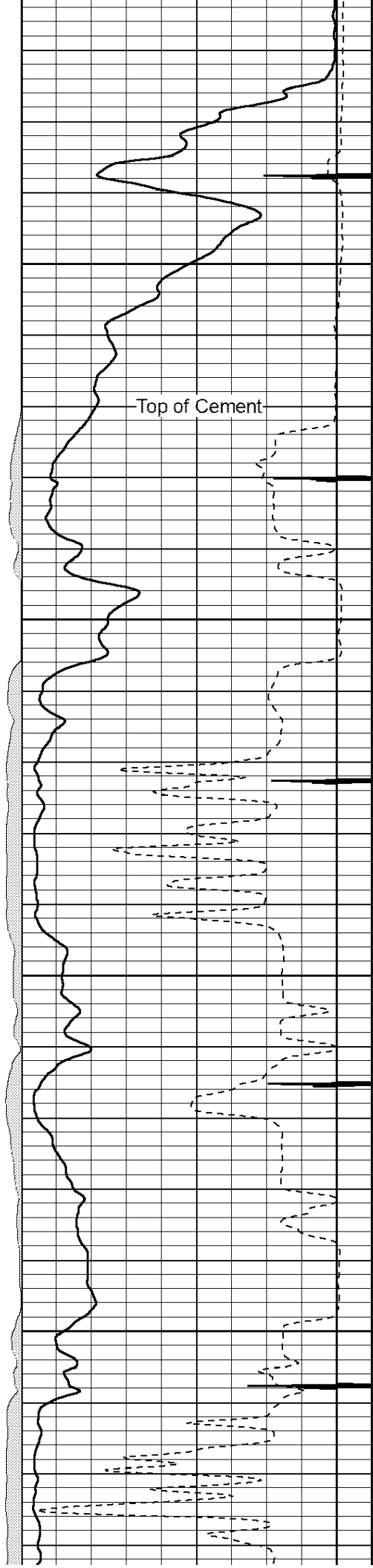
2800

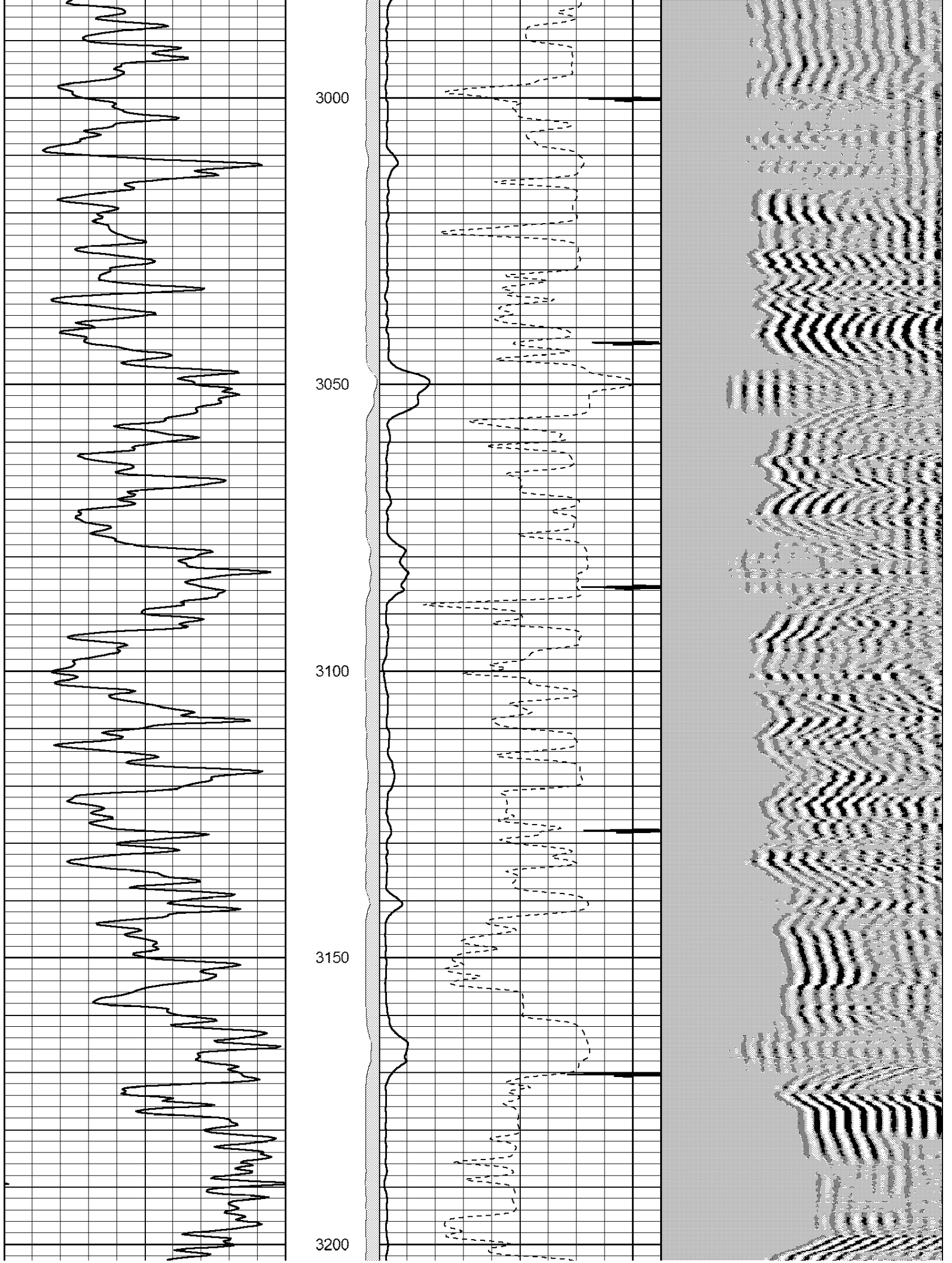
Top of Cement

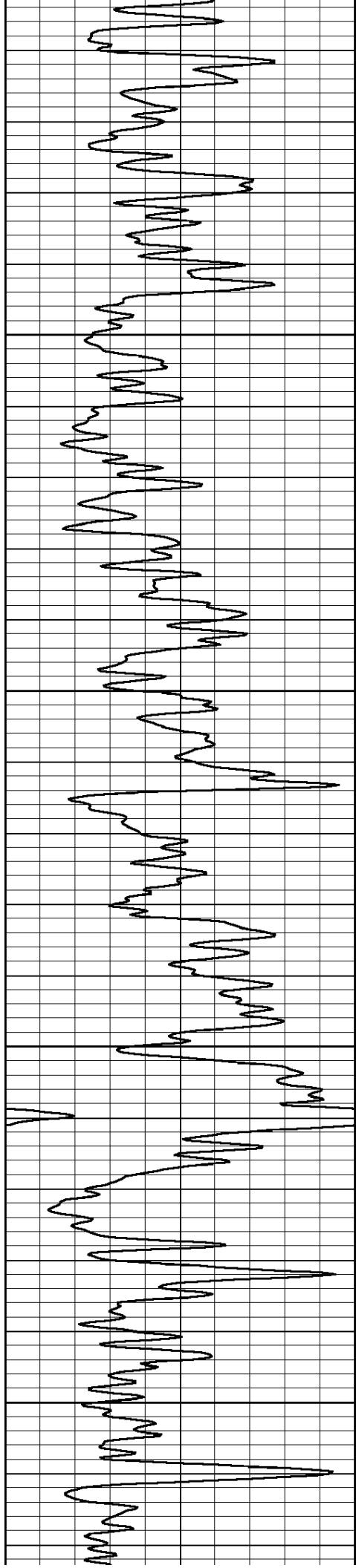
2850

2900

2950





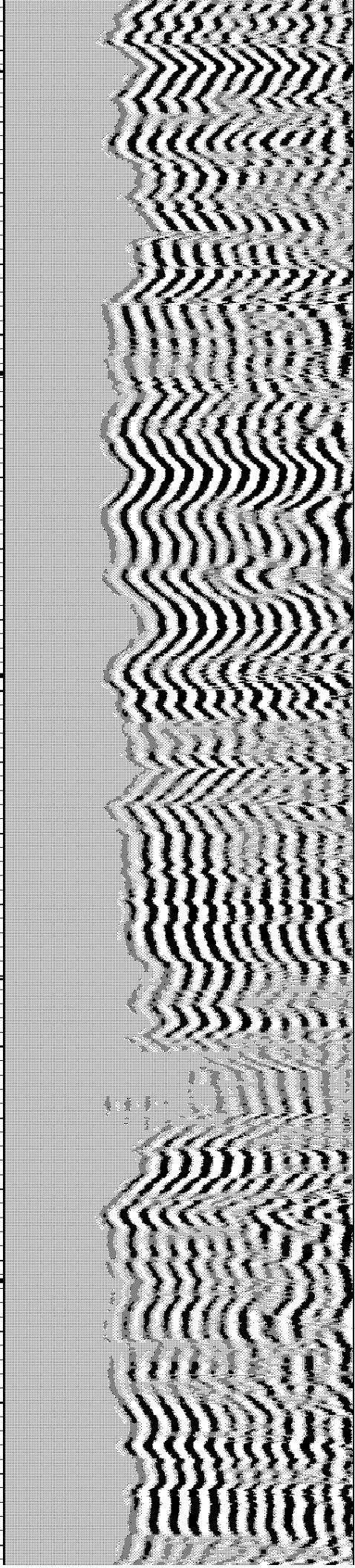
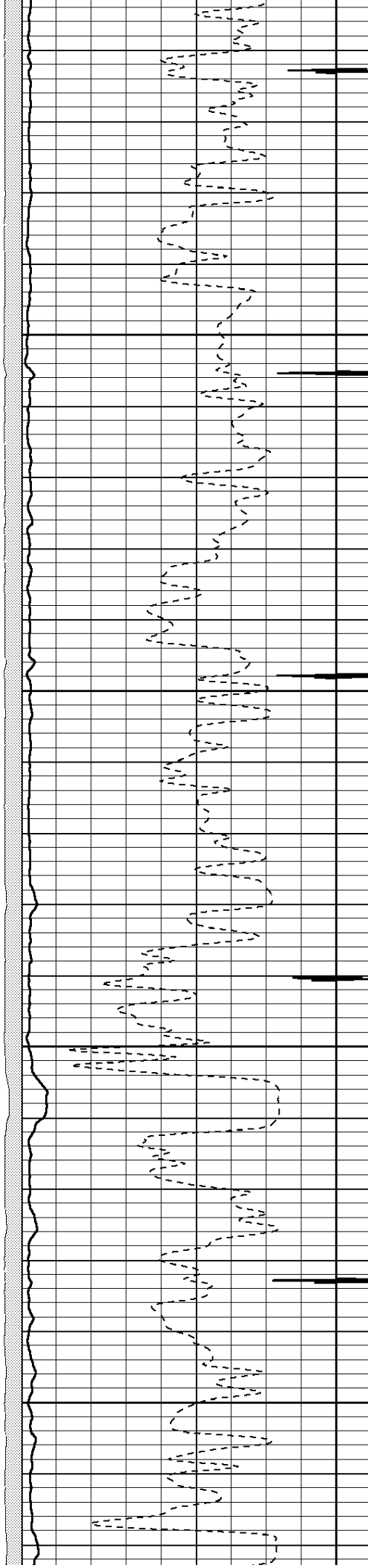


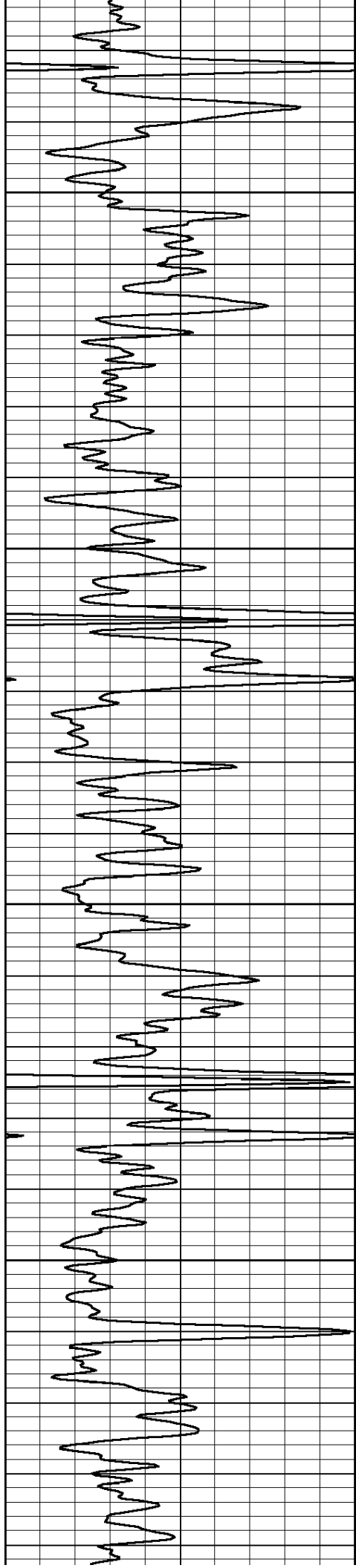
3250

3300

3350

3400



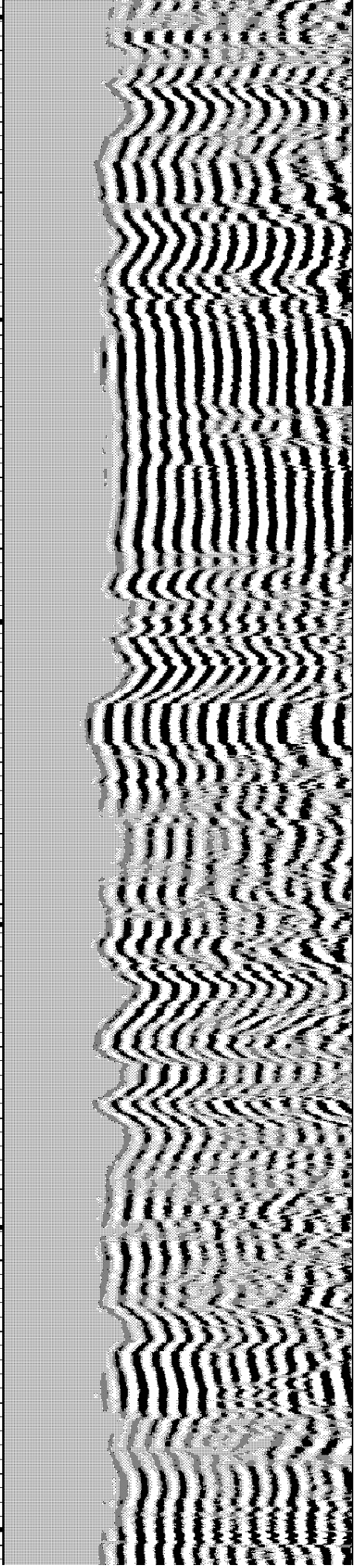
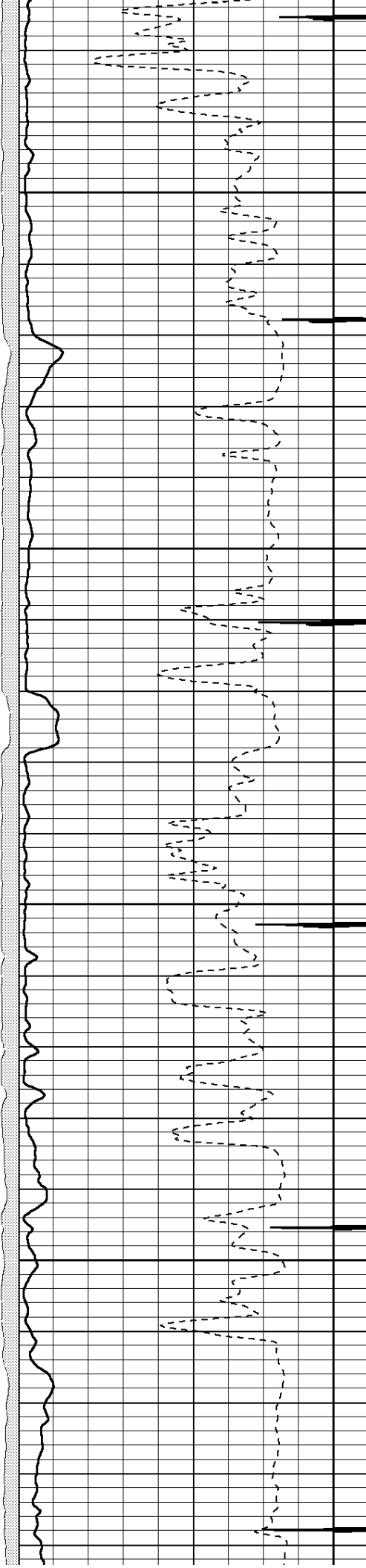


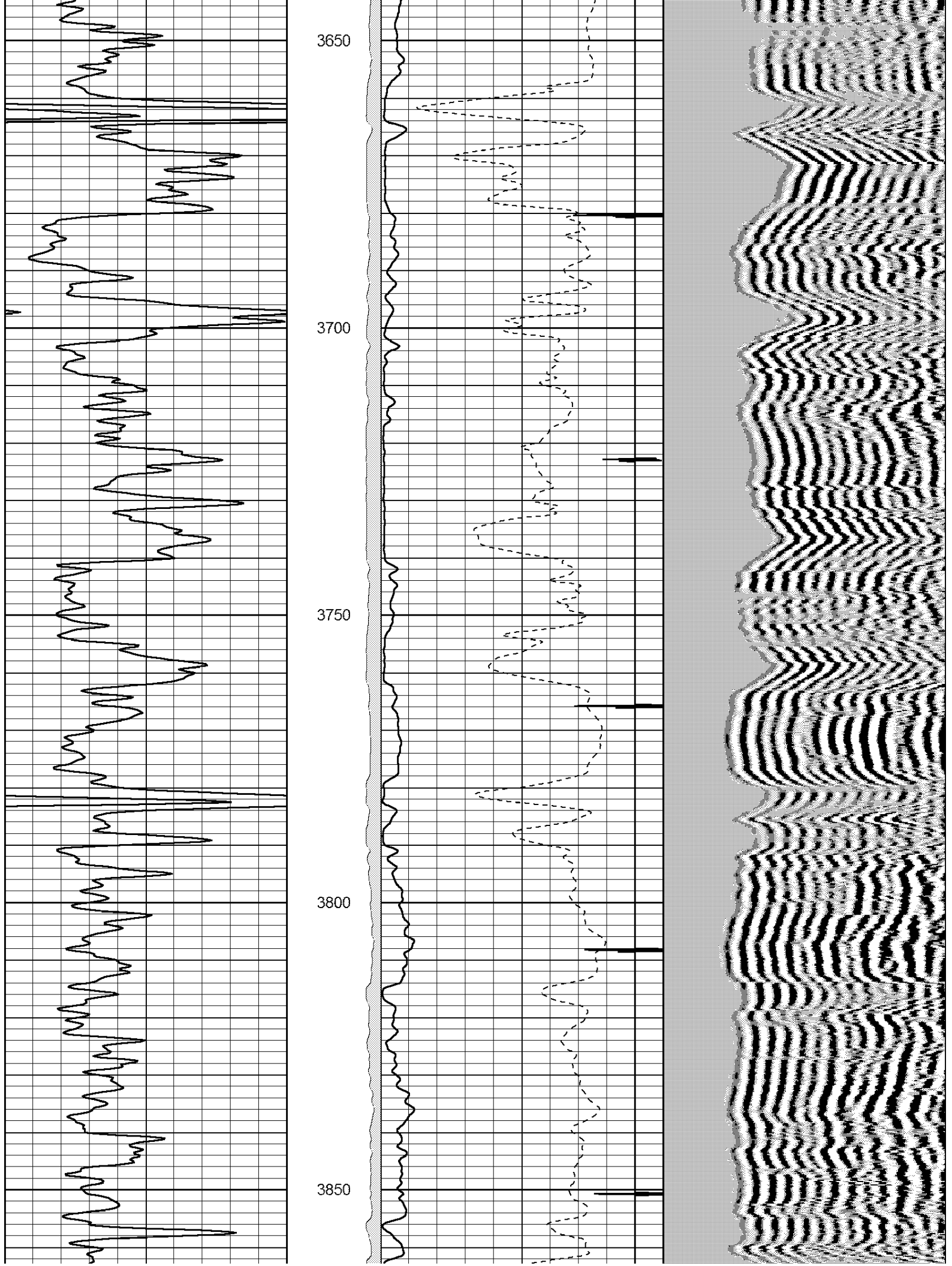
3450

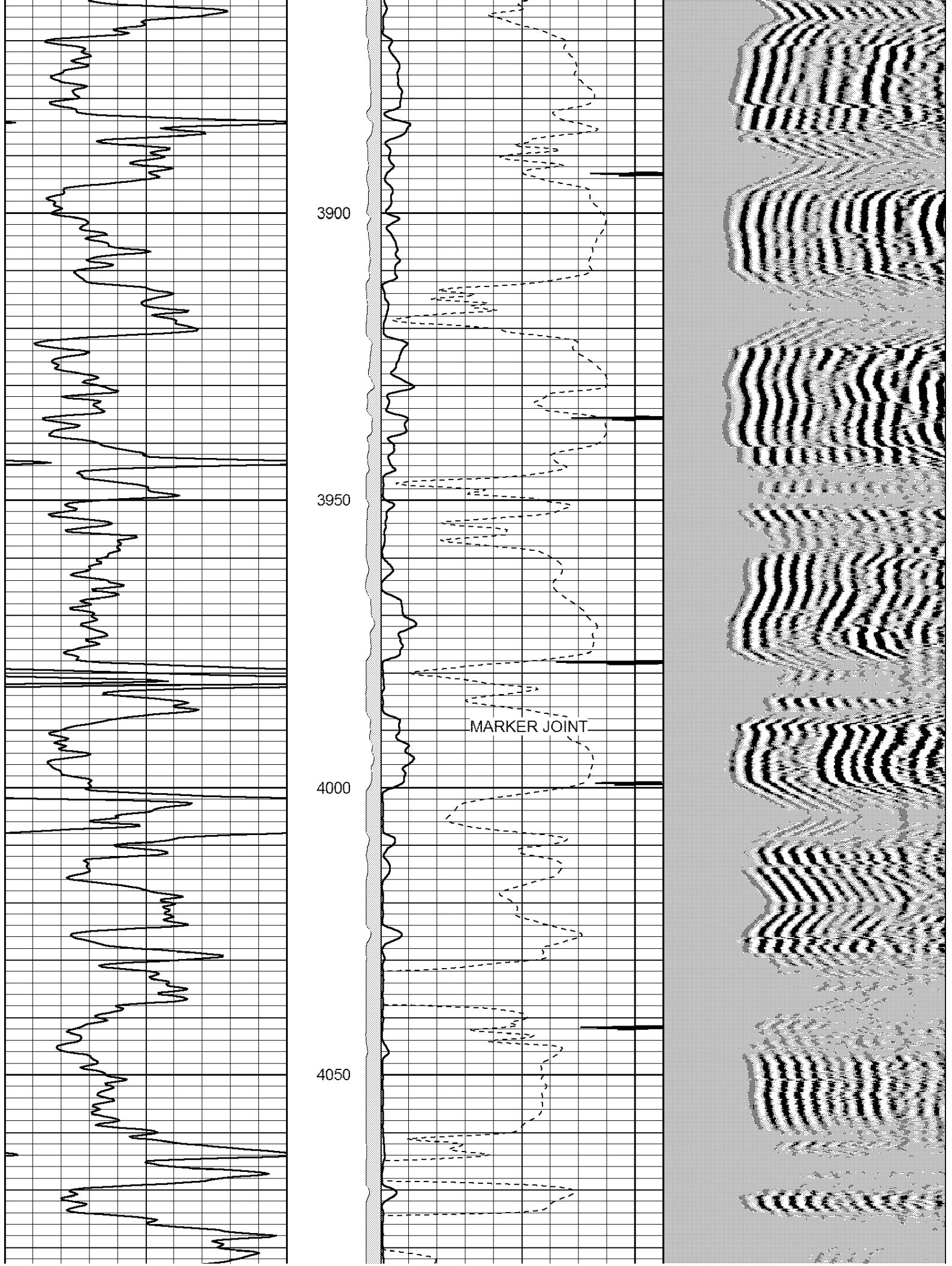
3500

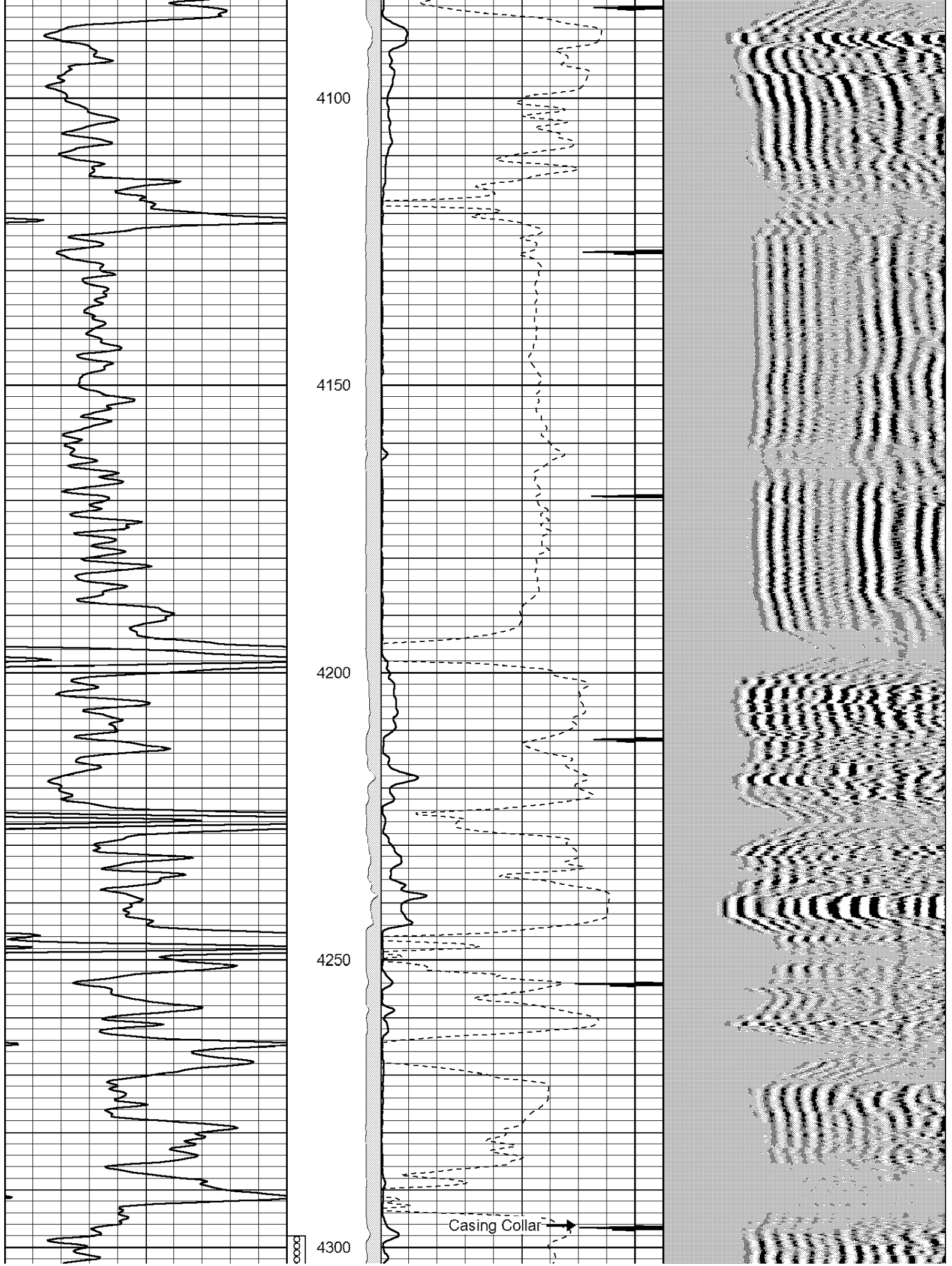
3550

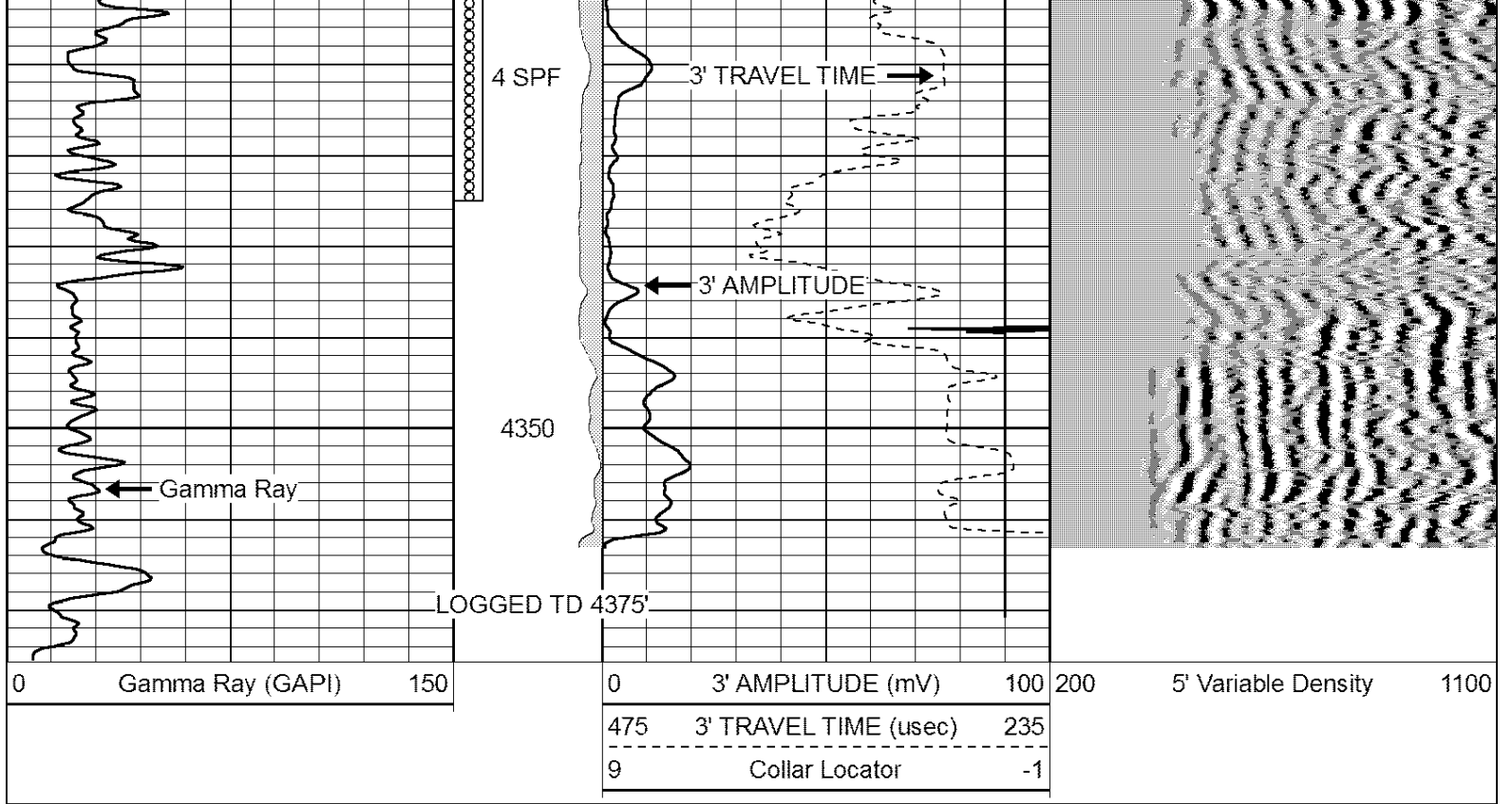
3600











**Perf-Tech**

Wireline Services, Inc.

# REPEAT SECTION

Database File: dec22109.db  
 Dataset Pathname: pass4  
 Presentation Format: 3x5  
 Dataset Creation: Thu Dec 02 08:31:03 2021 by Log Std Casedhole 06040  
 Charted by: Depth in Feet scaled 1:240

