



**COMPENSATED
DENSITY / NEUTRON
PE LOG**

Company EAGLE CREEK CORPORATION
Well PATTON #1-1
Field HUGOTON NORTH
County SCOTT **State** KANSAS

Location: API #: 15-171-21283-0000
 1320' FNL & 335' FEL
 W/2 - E/2 - E/2 - NE
Permanent Datum GROUND LEVEL **Elevation** 2313
Log Measured From KELLY BUSHING 7' A.G.L.
Drilling Measured From KELLY BUSHING
SEC 1 TWP 20S RGE 33W
Other Services
 DILMEL
 SONIC
Elevation
 K.B. 2320
 D.F. 2318
 G.L. 2313

Company	EAGLE CREEK CORPORATION
Well	PATTON #1-1
Field	HUGOTON NORTH
County	SCOTT
State	KANSAS
Date	1/5/22
Run Number	ONE
Depth Driller	4775
Depth Logger	4774
Bottom Logged Interval	4750
Top Log Interval	3400
Casing Driller	8 5/8" @ 252'
Casing Logger	252
Bit Size	7 7/8"
Type Fluid in Hole	CHEMICAL MUD
Density / Viscosity	9.3/52
pH / Fluid Loss	10.5/8.0
Source of Sample	FLOWLINE
Rm @ Meas. Temp	1.10 @ 60F
Rmf @ Meas. Temp	.825 @ 60F
Rmc @ Meas. Temp	1.32 @ 60F
Source of Rmf / Rmc	MEASUREMENT
Rm @ BHT	.537 @ 123F
Time Circulation Stopped	2.5 HOURS
Time Logger on Bottom	3.45 P.M.
Maximum Recorded Temperature	123F
Equipment Number	922339
Location	HAYS, KANSAS
Recorded By	JEFF LUEBBERS
Witnessed By	BOB O'DELL

<<< Fold Here >>>

All interpretations are opinions based on inferences from electrical or other measurements and we cannot and do not guarantee the accuracy or correctness of any interpretation, and we shall not, except in the case of gross or willful negligence on our part, be liable or responsible for any loss, costs, damages, or expenses incurred or sustained by anyone resulting from any interpretation made by any of our officers, agents or employees. These interpretations are also subject to our general terms and conditions set out in our current Price Schedule.

15-171-21283-0000 Comments

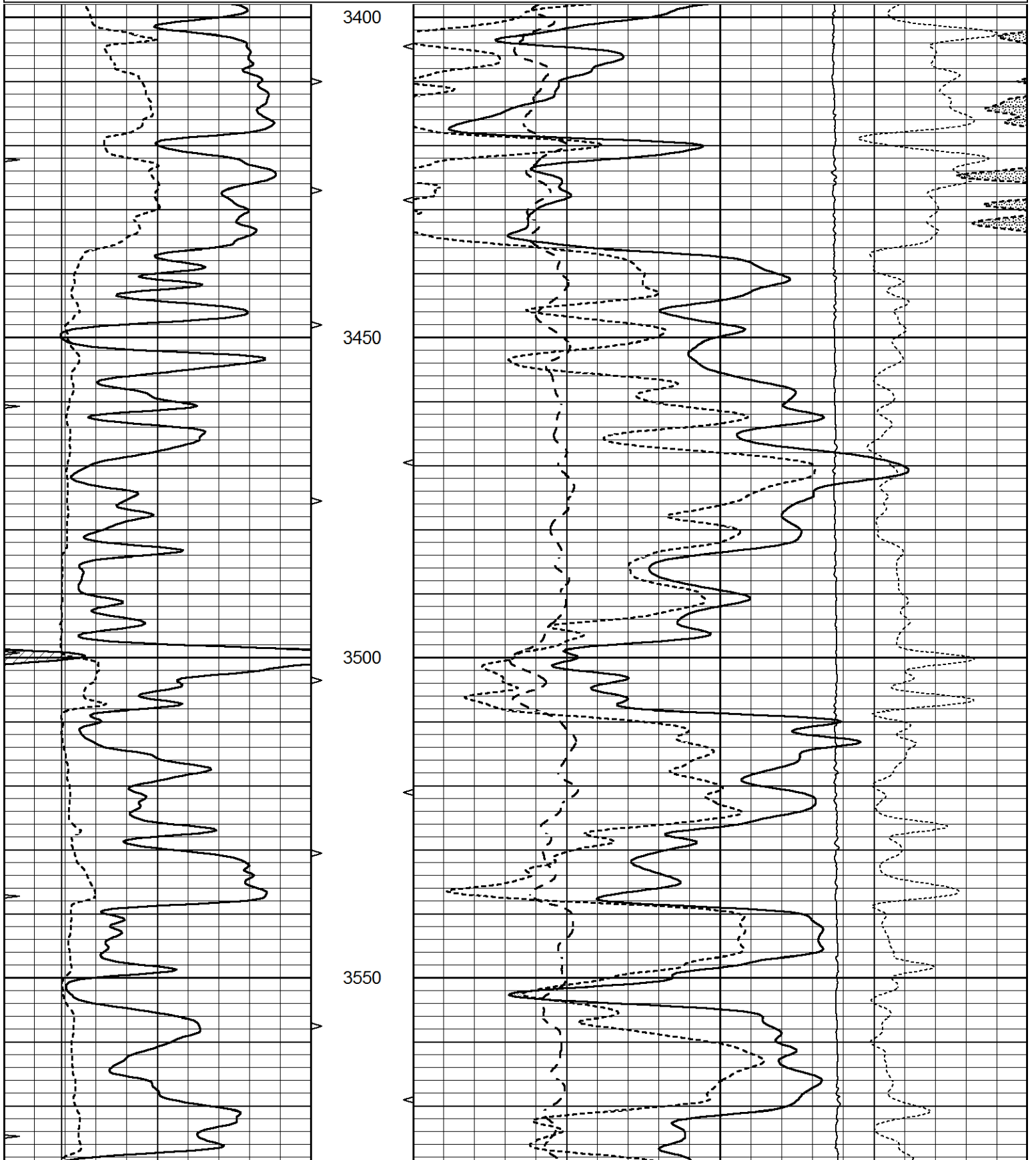
THANK YOU FOR USING ELI WIRELINE HAYS, KANSAS (785) 628-6395
 DIRECTIONS
 SCOTT CITY, KS., 8S. ON HWY 83, W. INTO AND BACK NORTH

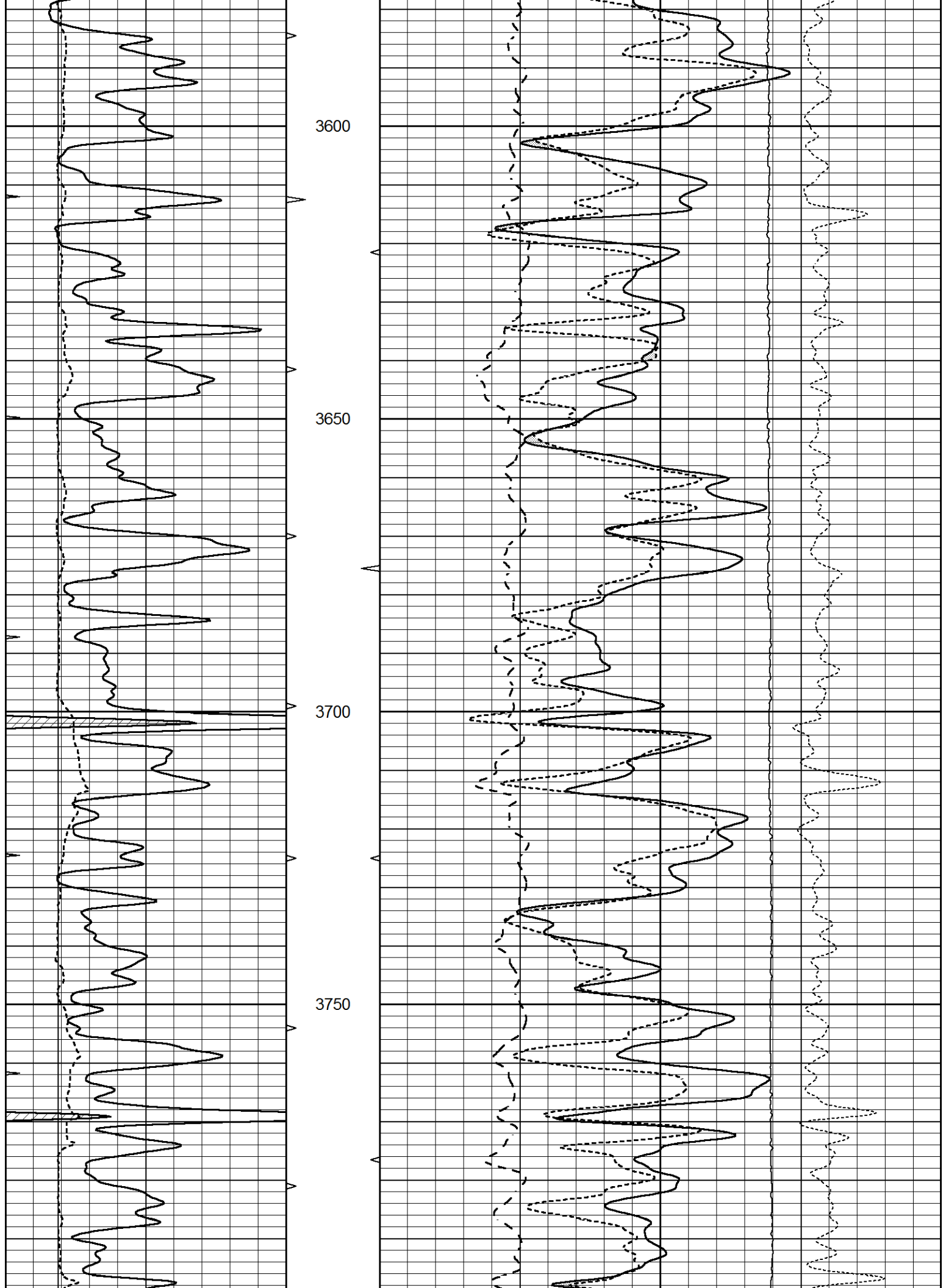


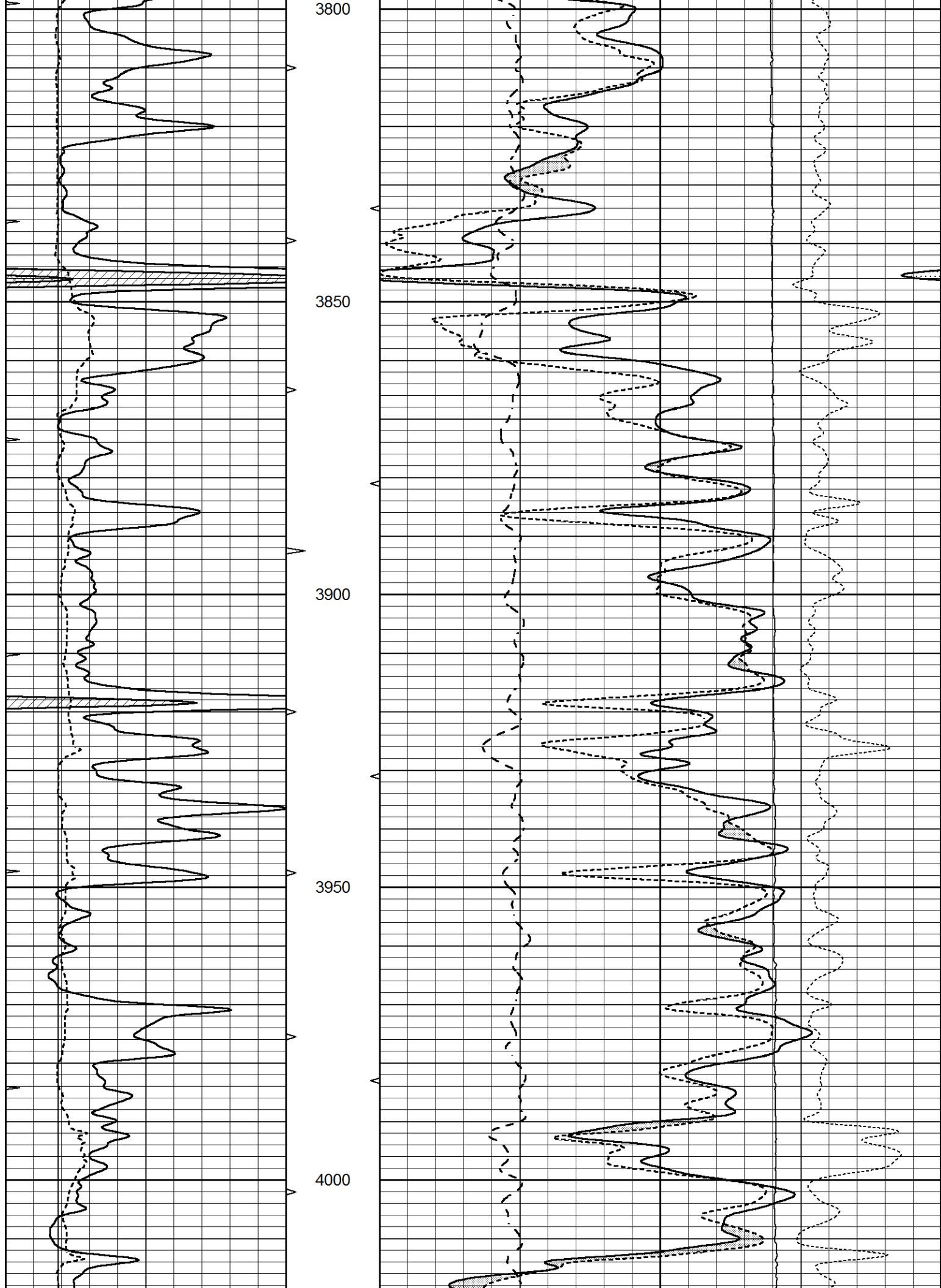
MAIN SECTION

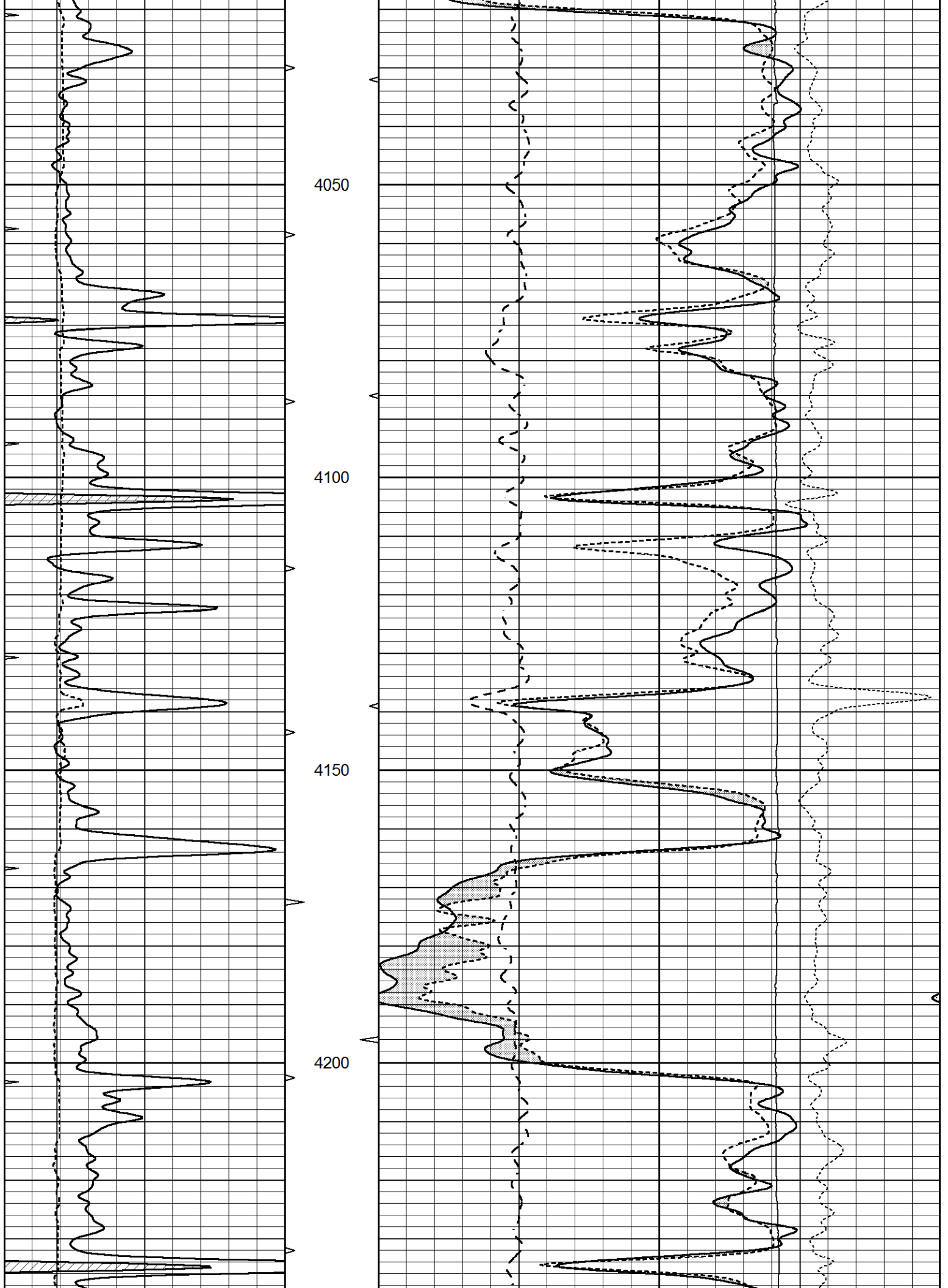
Database File 5932pe.db
 Dataset Pathname pass3.1M
 Presentation Format Idt_neu
 Dataset Creation Wed Jan 05 17:14:32 2022
 Charted by Depth in Feet scaled 1:240

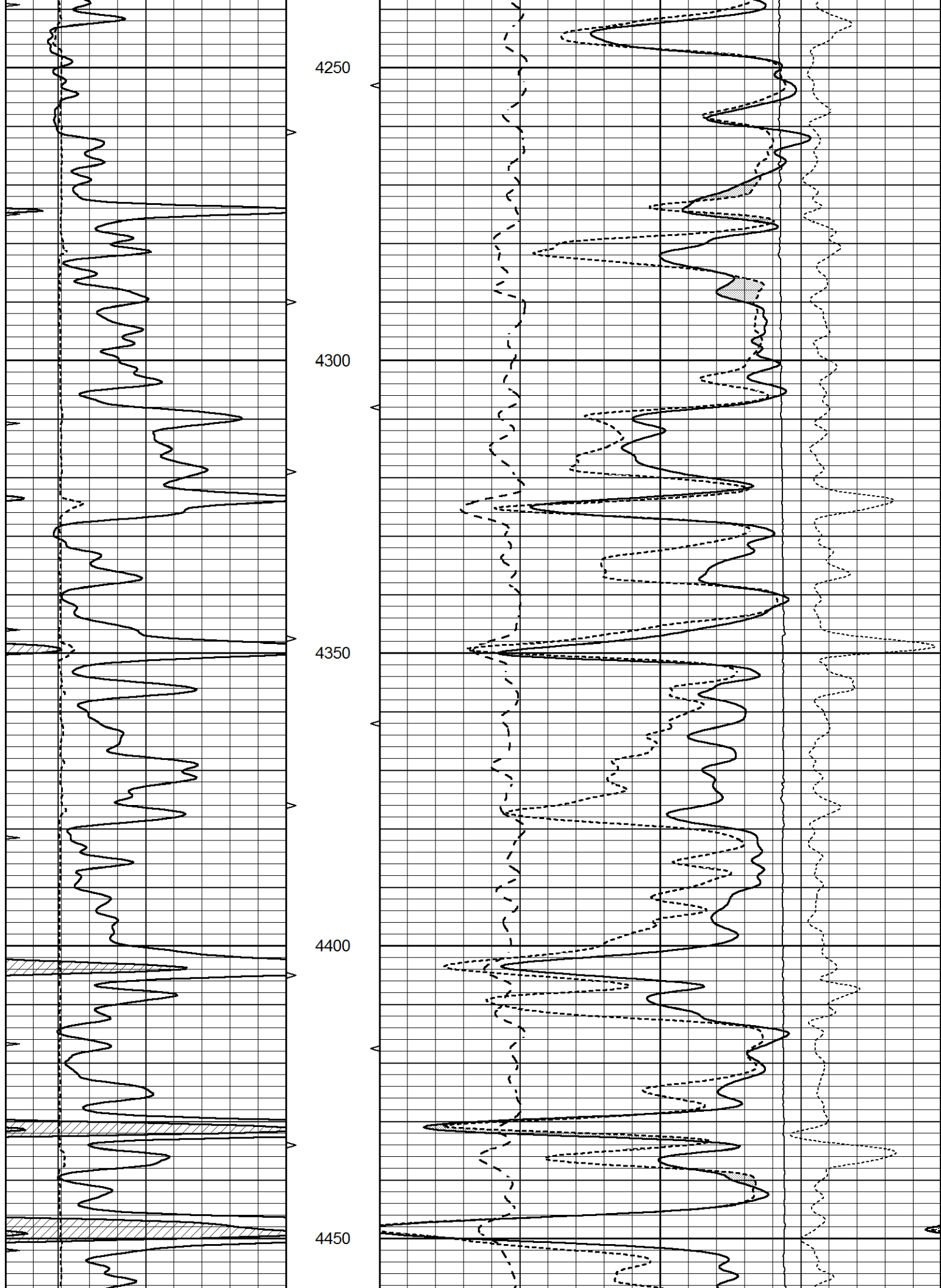
0	GAMMA RAY (GAPI)	150	ABHV	30	COMPENSATED DENSITY (pu)				-10	
6	CALIPER (in)	16	10 (ft3)	0	30	COMPENSATED NEUTRON (pu)				-10
0	MINMK	20	TBHV	0	PE	10	-0.25	CORRECTION (g/cc)	0.25	
			0 (ft3)	10			0	LTEN (lb)	5000	

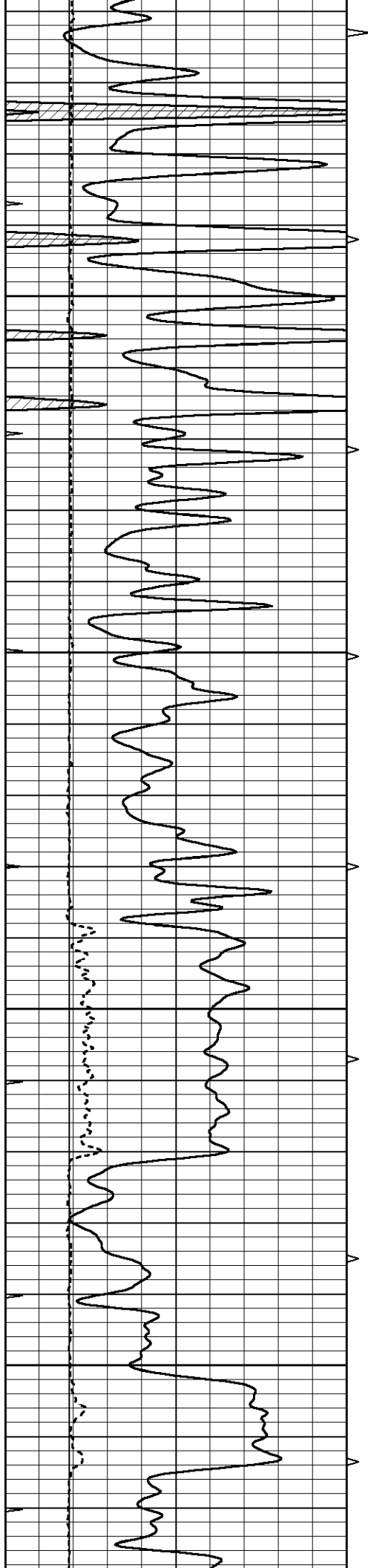










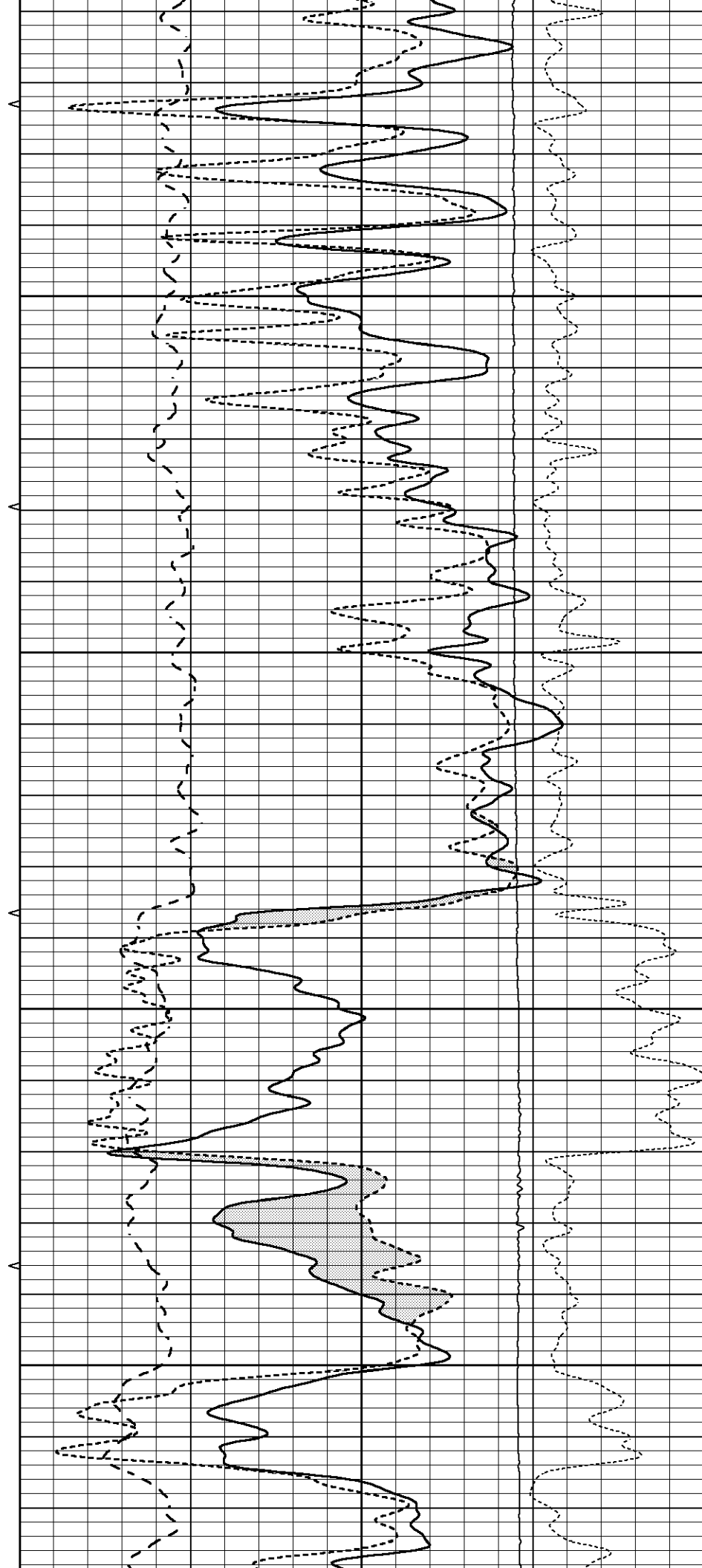


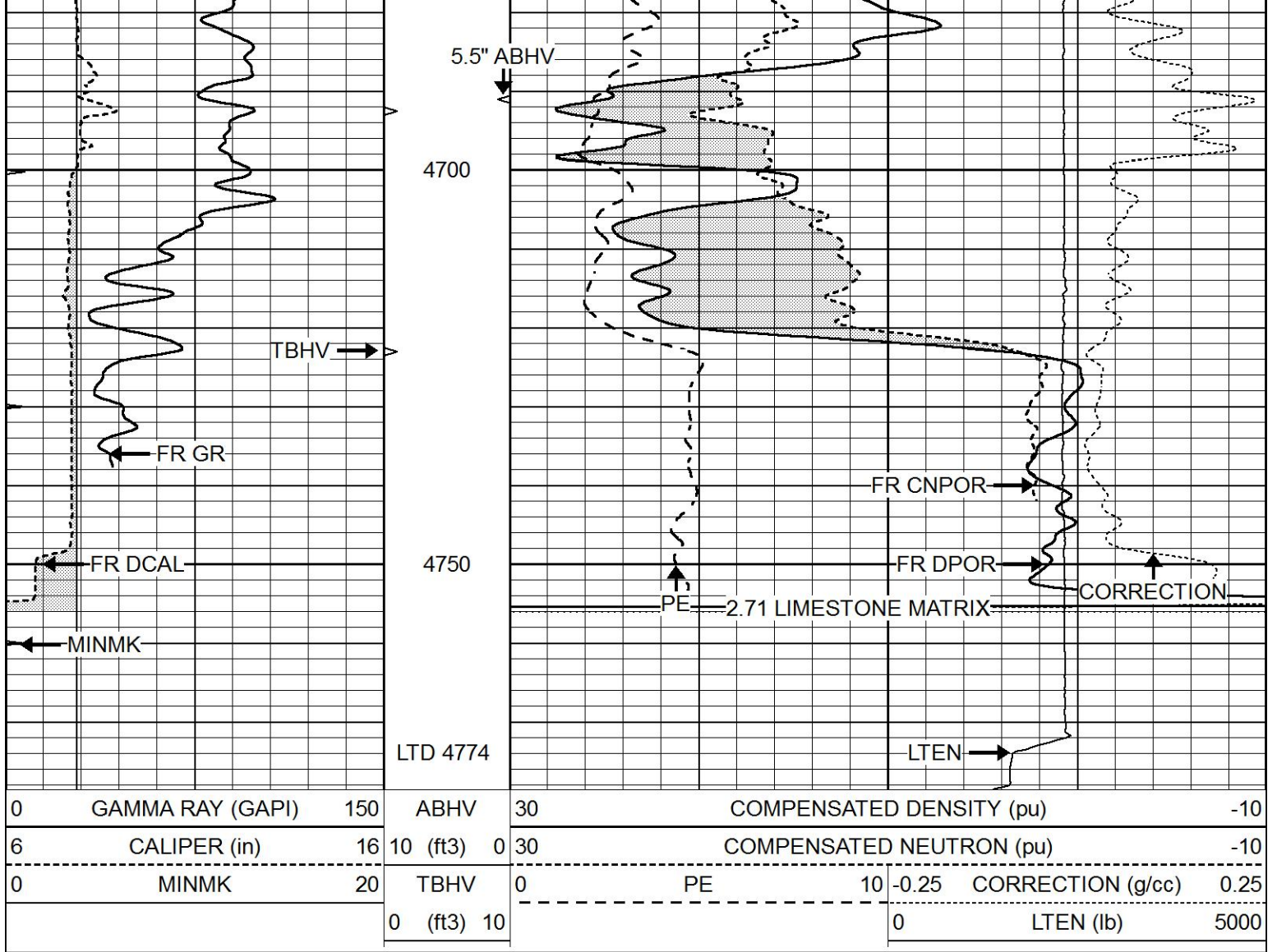
4500

4550

4600

4650

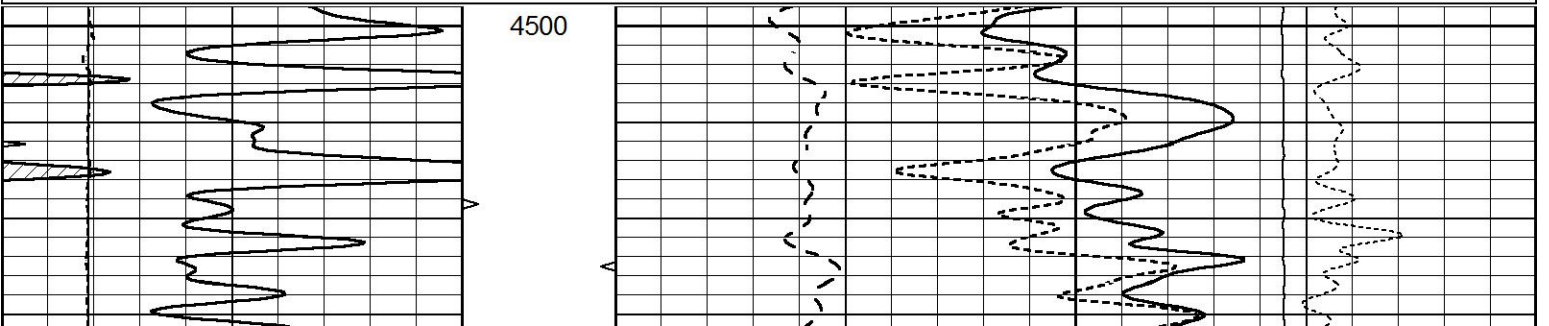


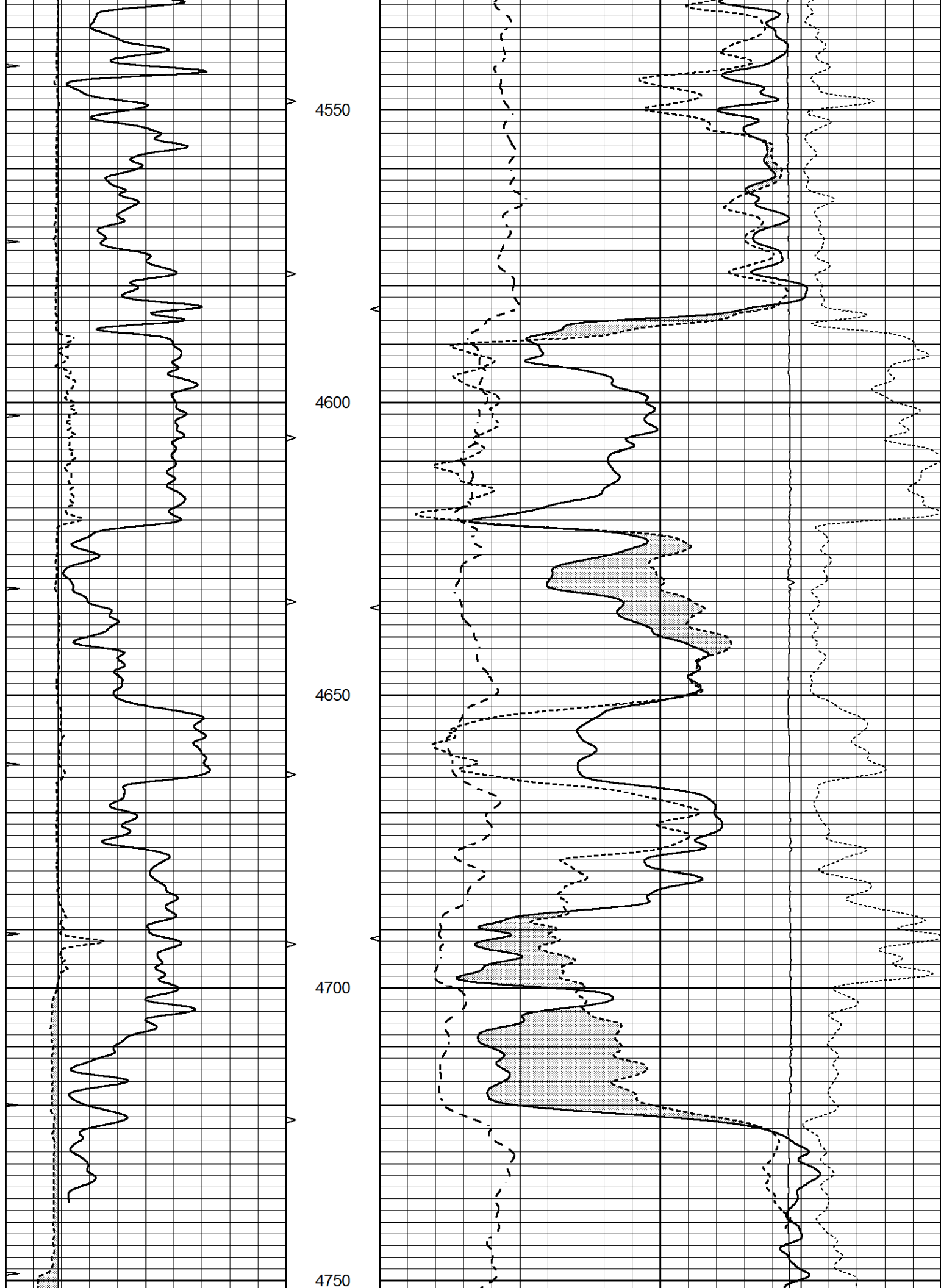


REPEAT SECTION

Database File 5932pe.db
 Dataset Pathname pass2.1R
 Presentation Format ldt_neu
 Dataset Creation Wed Jan 05 17:17:16 2022
 Charted by Depth in Feet scaled 1:240

0	GAMMA RAY (GAPI)	150	ABHV	30	COMPENSATED DENSITY (pu)	-10			
6	CALIPER (in)	16	10 (ft3)	0	30	COMPENSATED NEUTRON (pu)	-10		
0	MINMK	20	TBHV	0	PE	10	-0.25	CORRECTION (g/cc)	0.25
			0 (ft3)	10			0	LTEN (lb)	5000





0	GAMMA RAY (GAPI)	150	ABHV	30	COMPENSATED DENSITY (pu)				-10	
6	CALIPER (in)	16	10 (ft3)	0	30	COMPENSATED NEUTRON (pu)				-10
0	MINMK	20	TBHV	0	PE	10	-0.25	CORRECTION (g/cc)	0.25	
			0 (ft3)	10			0	LTEN (lb)	5000	

Calibration Report

Database File 5932pe.db
 Dataset Pathname pass3.1M
 Dataset Creation Wed Jan 05 17:14:32 2022

Dual Induction Calibration Report

Serial-Model: DIL4-GEAR
 Surface Cal Performed: Wed Jan 05 15:53:20 2022
 Downhole Cal Performed: Tue Sep 25 17:01:29 2001
 After Survey Verification Performed: Sat Jun 11 16:07:12 2005

Surface Calibration

Loop:	Readings				References			Results	
	Air	Loop			Air	Loop		m	b
Deep	0.008	0.666	V	0.000	400.000	mmho/m	580.000	0.000	
Medium	-0.003	0.769	V	0.000	462.500	mmho/m	560.000	-3.000	
Internal:	Zero	Cal		Zero	Cal		m	b	
Deep	0.013	0.651	V	0.000	400.000	mmho/m	627.541	-8.365	
Medium	0.020	0.754	V	0.000	462.500	mmho/m	630.311	-12.549	

Downhole Calibration

Internal:	Readings				References			Results	
	Zero	Cal			Zero	Cal		m	b
Deep	0.000	1.000	mmho/m	0.000	1.000	mmho/m	1.000	0.000	
Medium	0.000	1.000	mmho/m	0.000	1.000	mmho/m	1.000	0.000	
Shallow	2.525	0.026	V	500.000	2.000	Ohm-m	250.000	-3.000	

After Survey Verification

Internal:	Readings				Targets			Results	
	Zero	Cal			Zero	Cal		m'	b'
Deep	0.000	1.000	mmho/m	0.000	1.000	mmho/m	1.000	0.000	
Medium	0.000	1.000	mmho/m	0.000	1.000	mmho/m	1.000	0.000	
Shallow	0.000	0.000	Ohm-m	500.000	2.000	Ohm-m	1.000	0.000	

Litho Density Calibration Report

Serial: 003 Model: PRB

Master Calibration

Performed Fri Mar 05 10:51:07 2021

Background Magnesium Aluminum Aluminum+Fe

Window 1	1570.6	10682.1	3457.0	3096.9	cps
Window 2	1451.7	9432.7	3101.4	2816.5	cps
Window 3	1334.0	7160.6	2532.0	2369.3	cps
Window 4	370.4	373.1	366.4	370.9	cps
Long Space	0.0	7981.0	1649.7	1364.8	cps
Short Space	2.8	3522.0	2211.0	1823.6	cps
Rho		1.7100	2.5900	0.0000	g/cc
Pe		2.0000	2.7500	5.7900	

Rib Angle : 43.5 Rib Slope : 0.951 Density/Spine Ratio : 0.535
 Spine Angle : 73.5 Spine Slope : 3.386 Spine Intercept : -18.7

Before Survey Verification

Performed Wed Dec 31 18:00:00 1969

Window 1	0.0	0.0	0.0	0.0	cps
Window 2	0.0	0.0	0.0	0.0	cps
Window 3	0.0	0.0	0.0	0.0	cps
Window 4	0.0	0.0	0.0	0.0	cps
Long Space	0.0	0.0	0.0	0.0	cps
Short Space	0.0	0.0	0.0	0.0	cps
Measured Rho		0.0000	0.0000	0.0000	g/cc
Measured Correction		0.0000	0.0000	0.0000	g/cc
Measured Pe			0.0000	0.0000	

After Survey Verification

Performed Wed Dec 31 18:00:00 1969

Window 1	0.0	0.0	0.0	0.0	cps
Window 2	0.0	0.0	0.0	0.0	cps
Window 3	0.0	0.0	0.0	0.0	cps
Window 4	0.0	0.0	0.0	0.0	cps
Long Space	0.0	0.0	0.0	0.0	cps
Short Space	0.0	0.0	0.0	0.0	cps
Measured Rho		0.0000	0.0000	0.0000	g/cc
Measured Correction		0.0000	0.0000	0.0000	g/cc
Measured Pe			0.0000	0.0000	

Compensated Neutron Calibration Report

Serial Number: 070808PMC
 Tool Model: NABORS

PRE-SURVEY VERIFICATION

Detector	Readings	Measured	Target
Short Space	cps		
Long Space	cps	pu	pu

POST-SURVEY VERIFICATION

Detector	Readings	Measured	Target
Short Space	cps		
Long Space	cps	pu	pu

Gamma Ray Calibration Report

Serial Number: 070558
 Tool Model: OPEN_GR

Performed: Wed Jan 05 15:49:21 2022

Calibrator Value:	1.0	GAPI
Background Reading:	0.0	cps
Calibrator Reading:	1.0	cps
Sensitivity:	0.3000	GAPI/cps