

SONIC
LOG



Company EAGLE CREEK CORPORATION
Well PATTON #1-1
Field HUGOTON NORTH
County SCOTT State KANSAS

Location: 1320' FNL & 335' FEL
W/2 - E/2 - E/2 - NE
API #: 15-171-21283-0000
Permanent Datum GROUND LEVEL Elevation 2313
Log Measured From KELLY BUSHING 7' A.G.L.
Drilling Measured From KELLY BUSHING
SEC 1 TWP 20S RGE 33W
Other Services
CDL/CNL/PE
DIL/MEI
Elevation
K.B. 2320
D.F. 2318
G.L. 2313

Date	1/5/22		
Run Number	TWO		
Depth Driller	4775		
Depth Logger	4774		
Bottom Logged Interval	4766		
Top Log Interval	200		
Casing Driller	8 5/8"@252'		
Casing Logger	252		
Bit Size	7 7/8"		
Type Fluid in Hole	CHEMICAL MUD	CHLORIDES 4,000 PPM	
Density / Viscosity	9.3/52		
pH / Fluid Loss	10.5/8.0		
Source of Sample	FLOWLINE		
Rm @ Meas. Temp	1.10@60F		
Rmf @ Meas. Temp	.825@60F		
Rmc @ Meas. Temp	1.32@60F		
Source of Rmf / Rmc	MEASUREMENT		
Rm @ BHT	.537@123F		
Time Circulation Stopped	4:5 HOURS		
Time Logger on Bottom	6:15 P.M.		
Maximum Recorded Temperature	123F		
Equipment Number	922339		
Location	HAYS, KANSAS		
Recorded By	JEFF LUEBBERS		
Witnessed By	BOB O'DELL		

<<< Fold Here >>>

All interpretations are opinions based on inferences from electrical or other measurements and we cannot and do not guarantee the accuracy or correctness of any interpretation, and we shall not, except in the case of gross or willful negligence on our part, be liable or responsible for any loss, costs, damages, or expenses incurred or sustained by anyone resulting from any interpretation made by any of our officers, agents or employees. These interpretations are also subject to our general terms and conditions set out in our current Price Schedule.

15-171-21283-0000 Comments

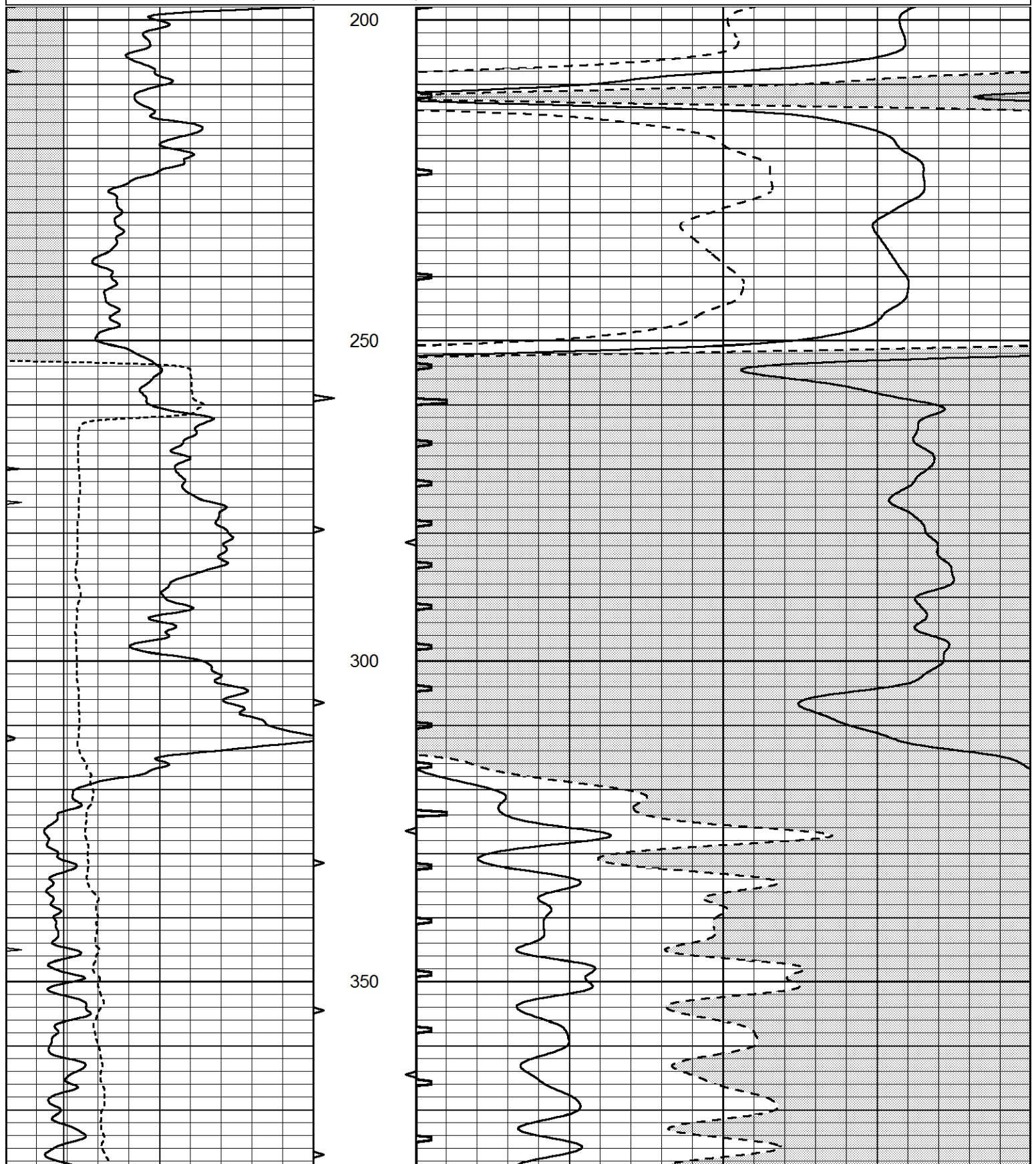
THANK YOU FOR USING ELI WIRELINE HAYS, KANSAS (785) 628-6395
DIRECTIONS
SCOTT CITY, KS., 8S. ON HWY 83, W. INTO AND BACK NORTH

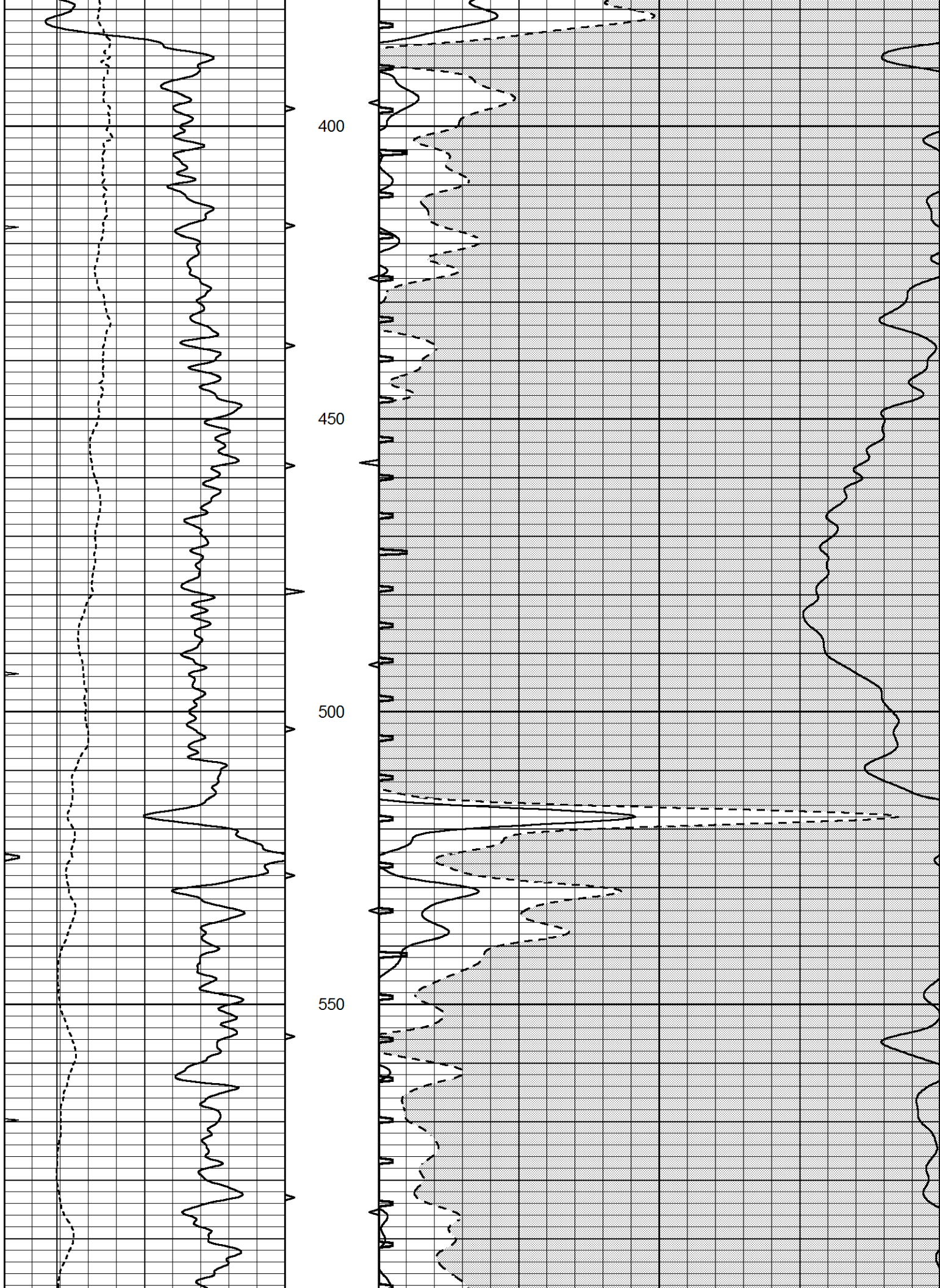


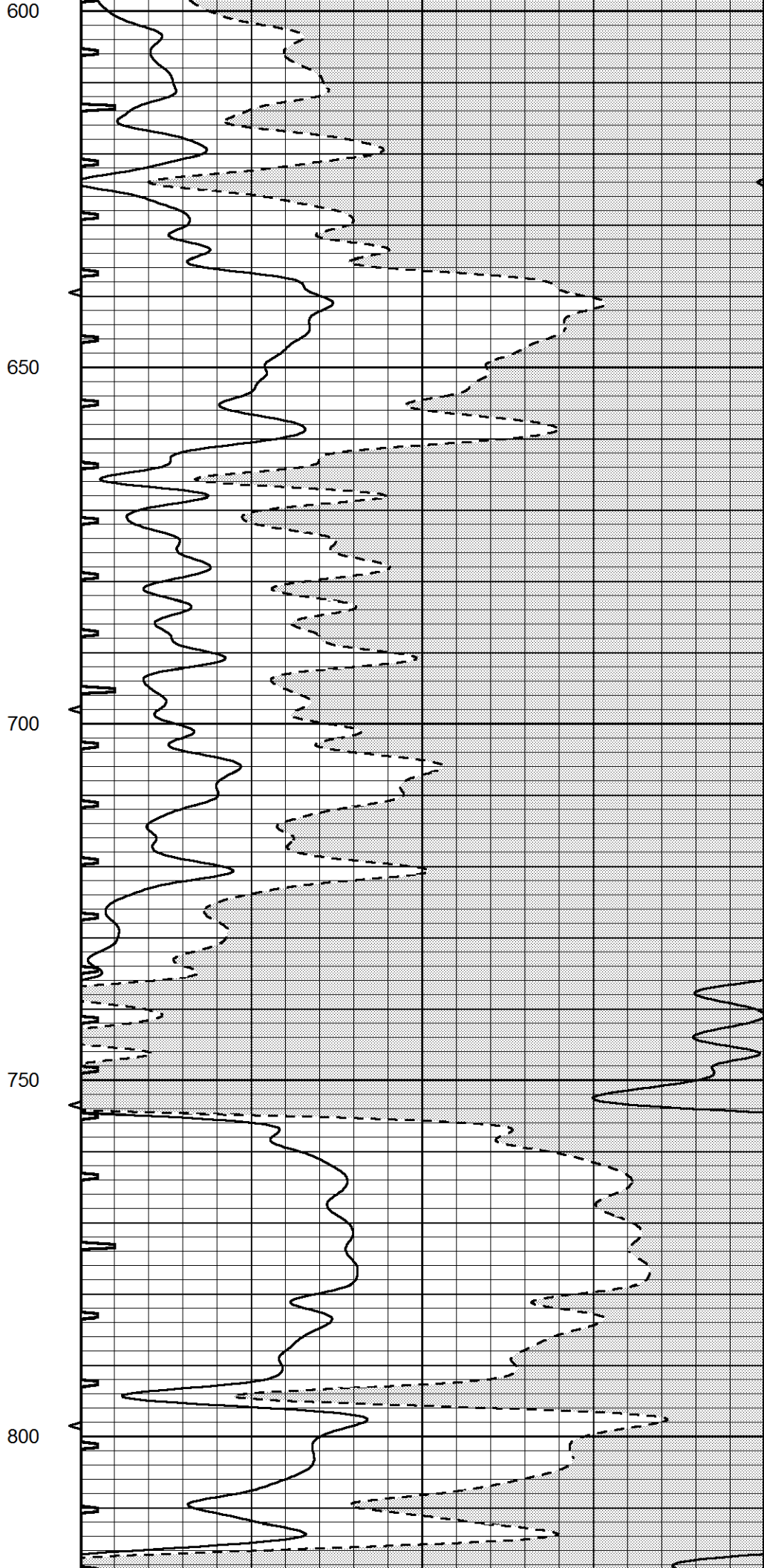
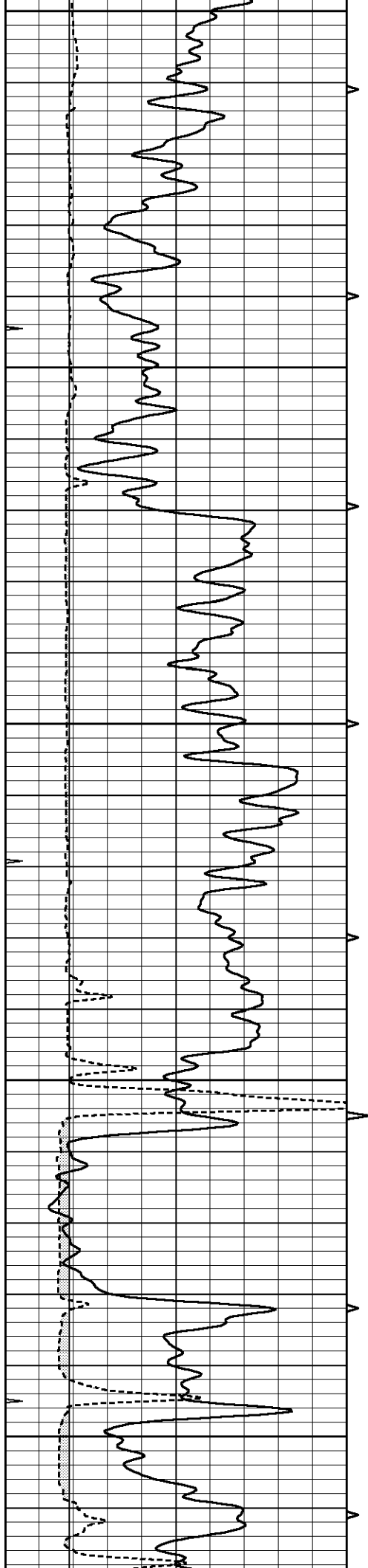
MAIN SECTION

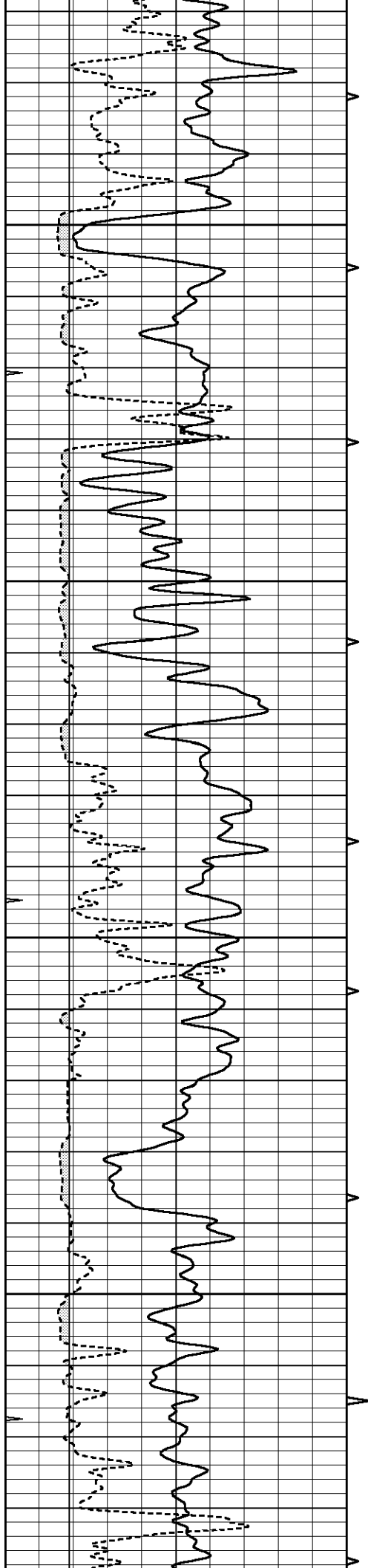
Database File 5932pe.db
 Dataset Pathname pass6.3
 Presentation Format slt
 Dataset Creation Wed Jan 05 19:32:25 2022
 Charted by Depth in Feet scaled 1:240

0	GAMMA RAY (GAPI)	150	ABHV	140	DELTA TIME (usec/ft)	40
6	CALIPER (in)	16	10 (ft3)	0	SONIC POROSITY (pu)	-10
0	MINMK	20	TBHV	0	ITT (msec)	20
			0 (ft3)	10		







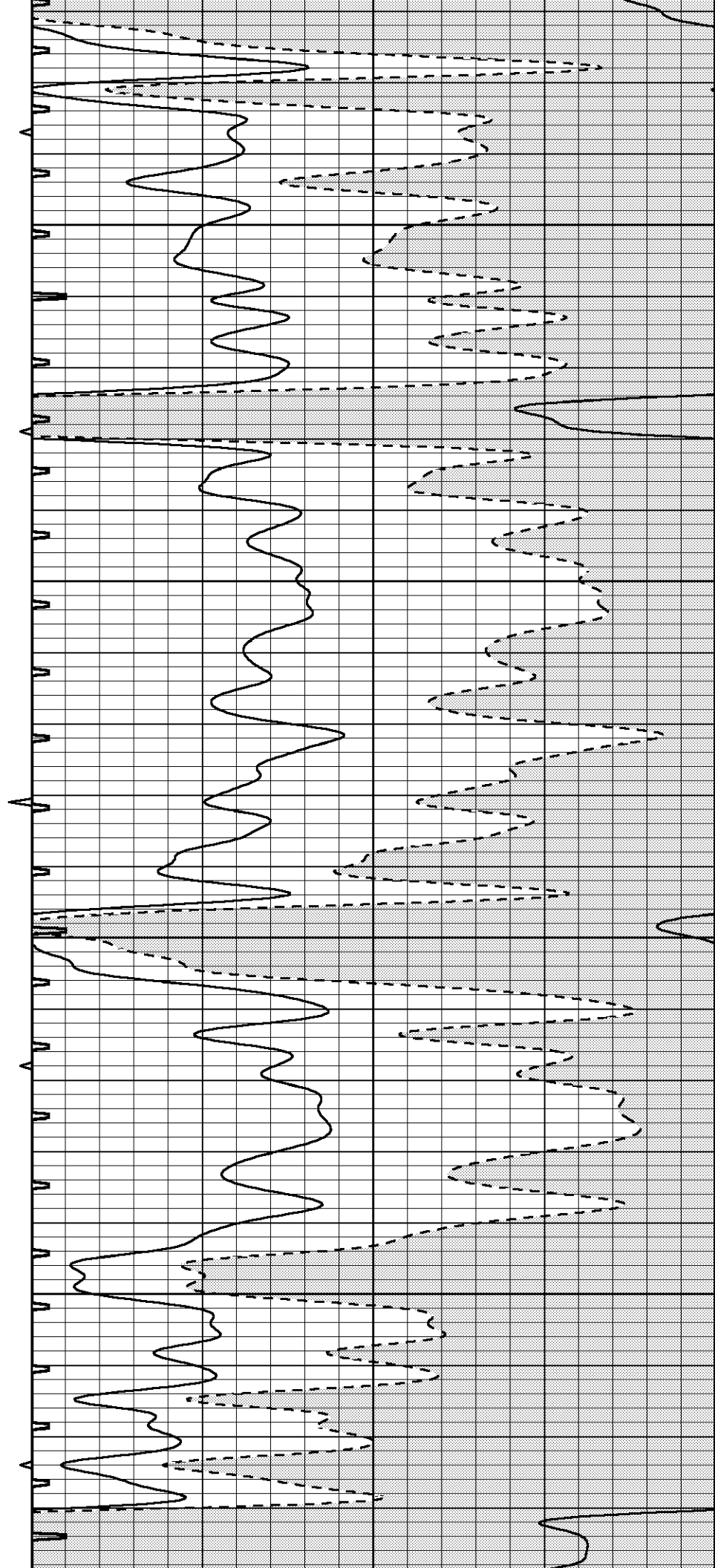


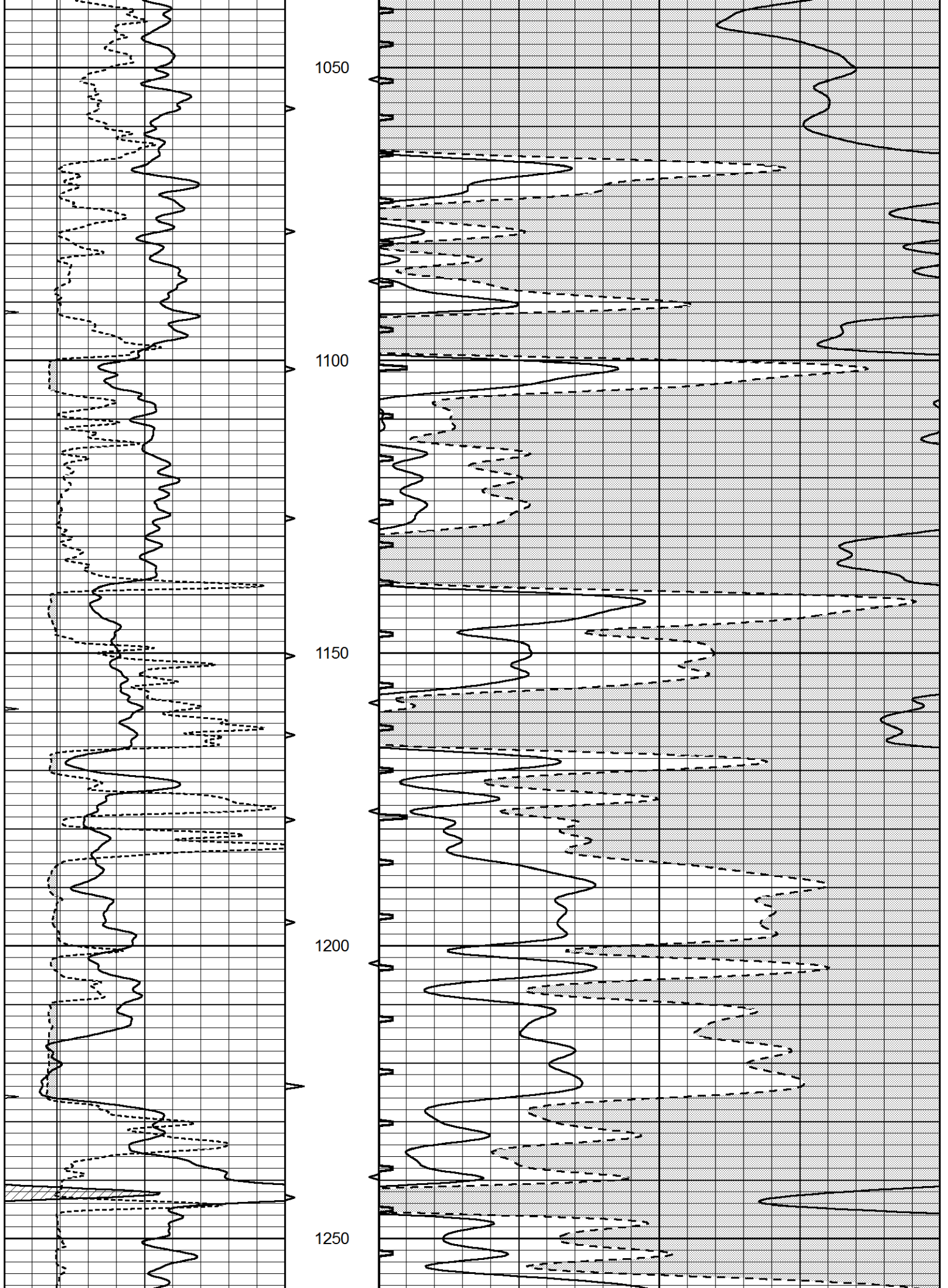
850

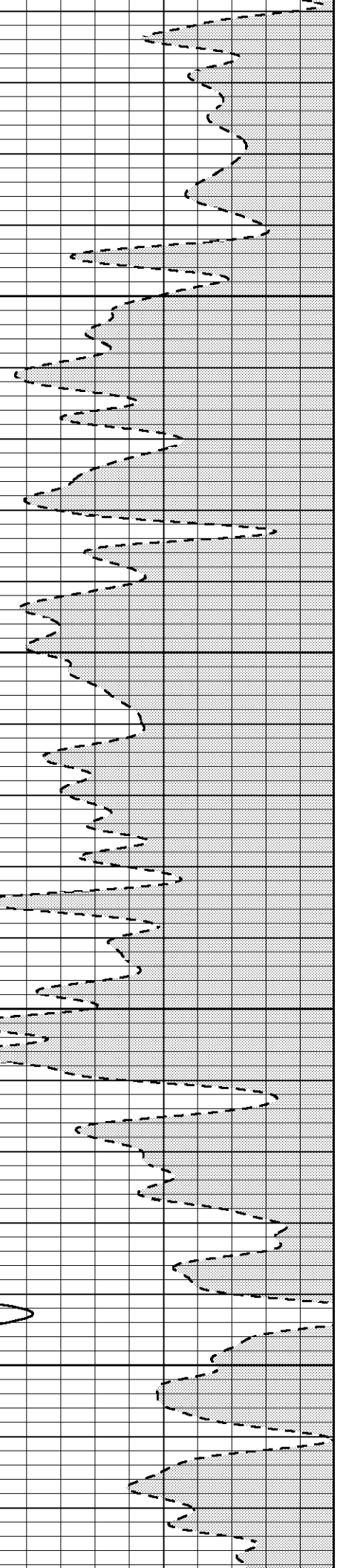
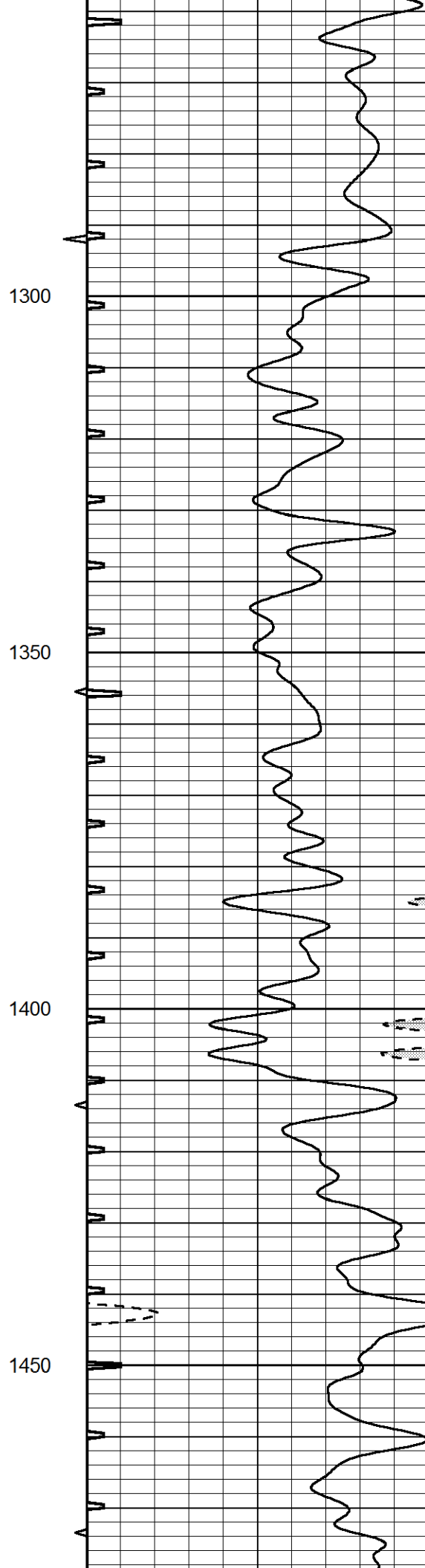
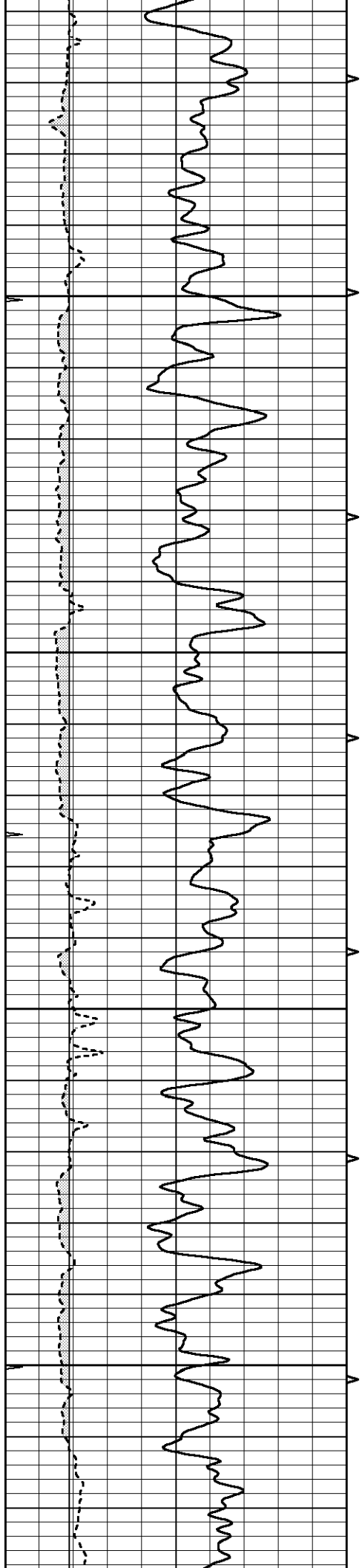
900

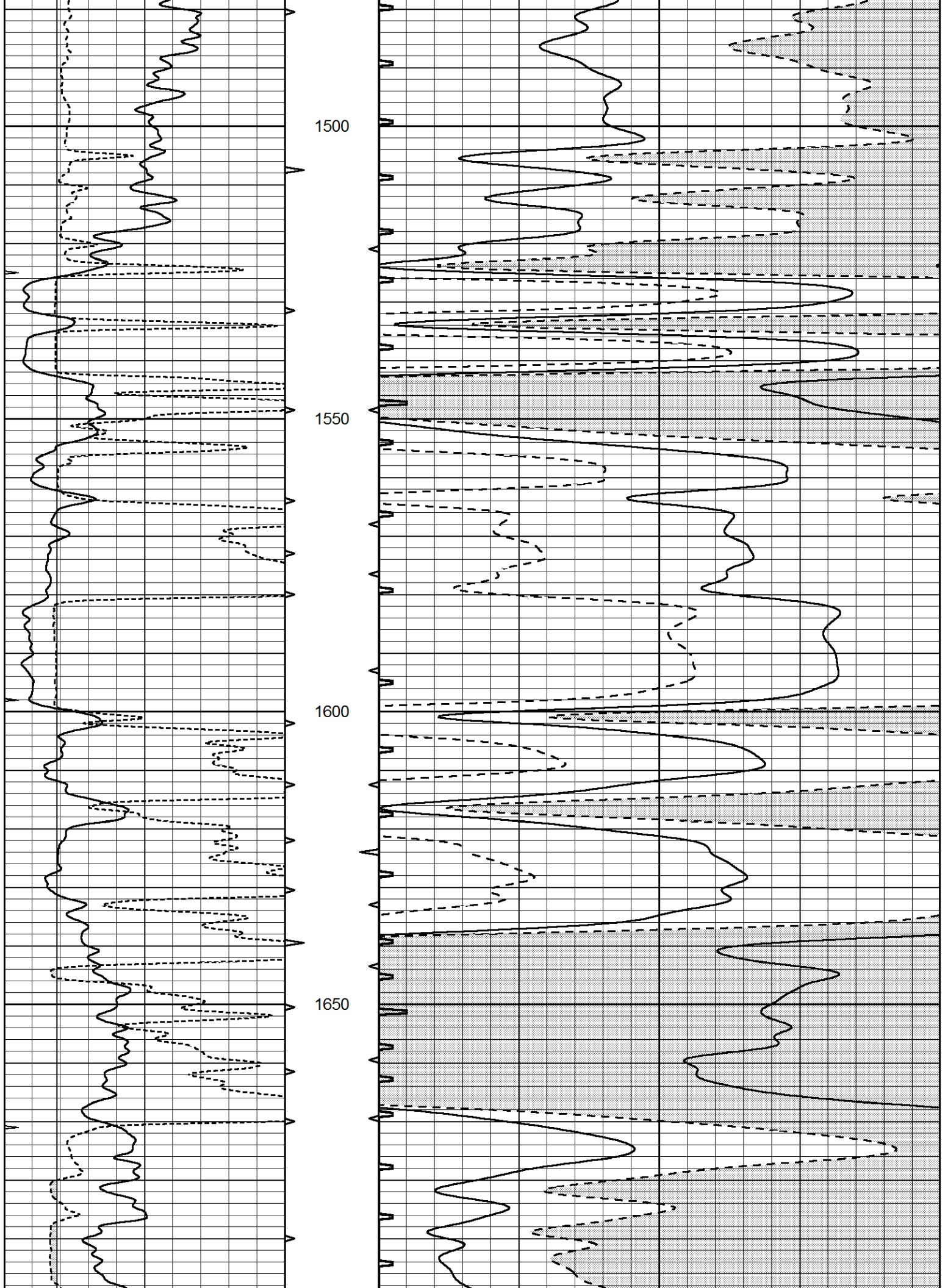
950

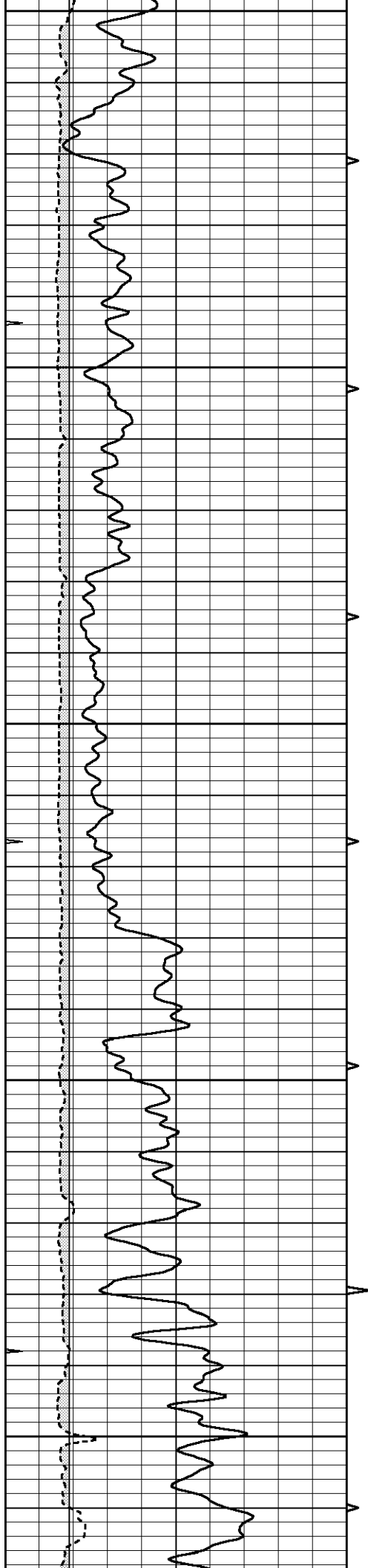
1000











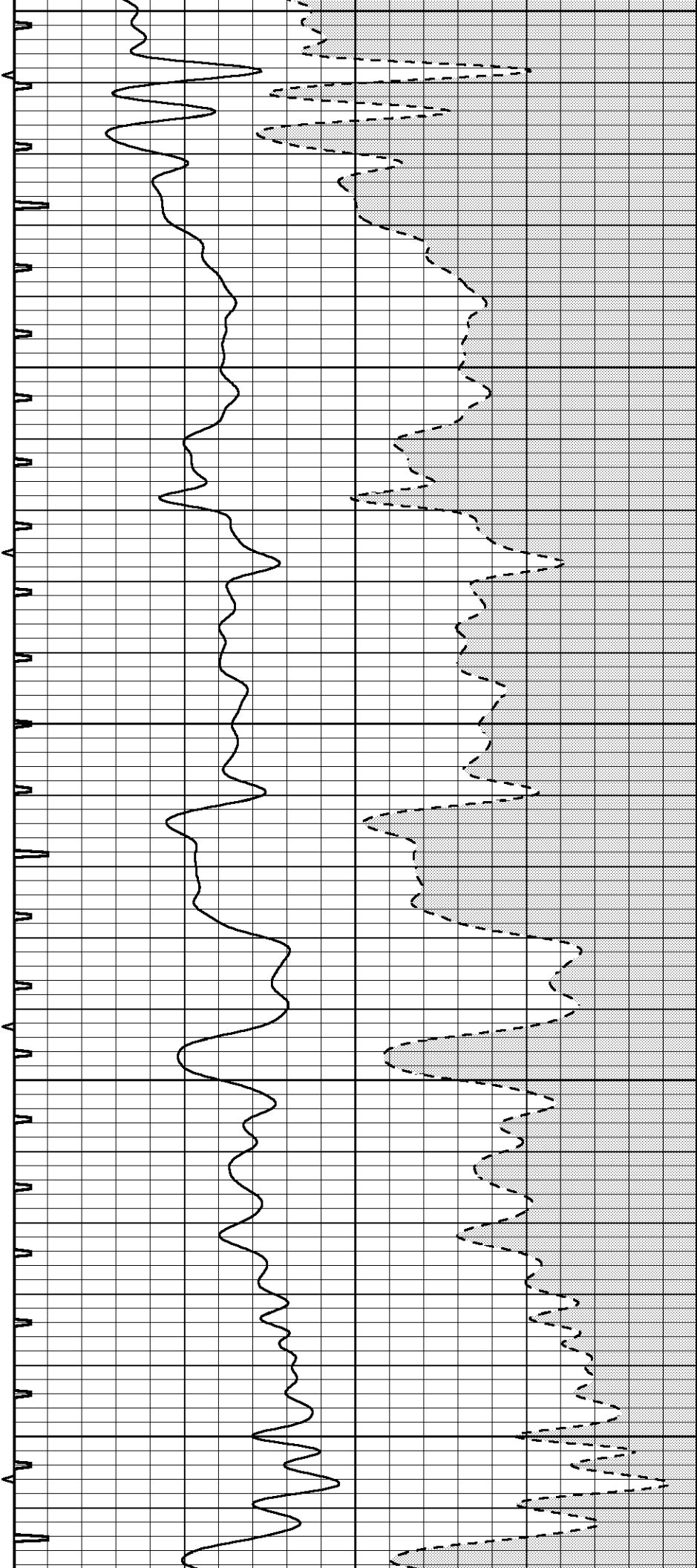
1700

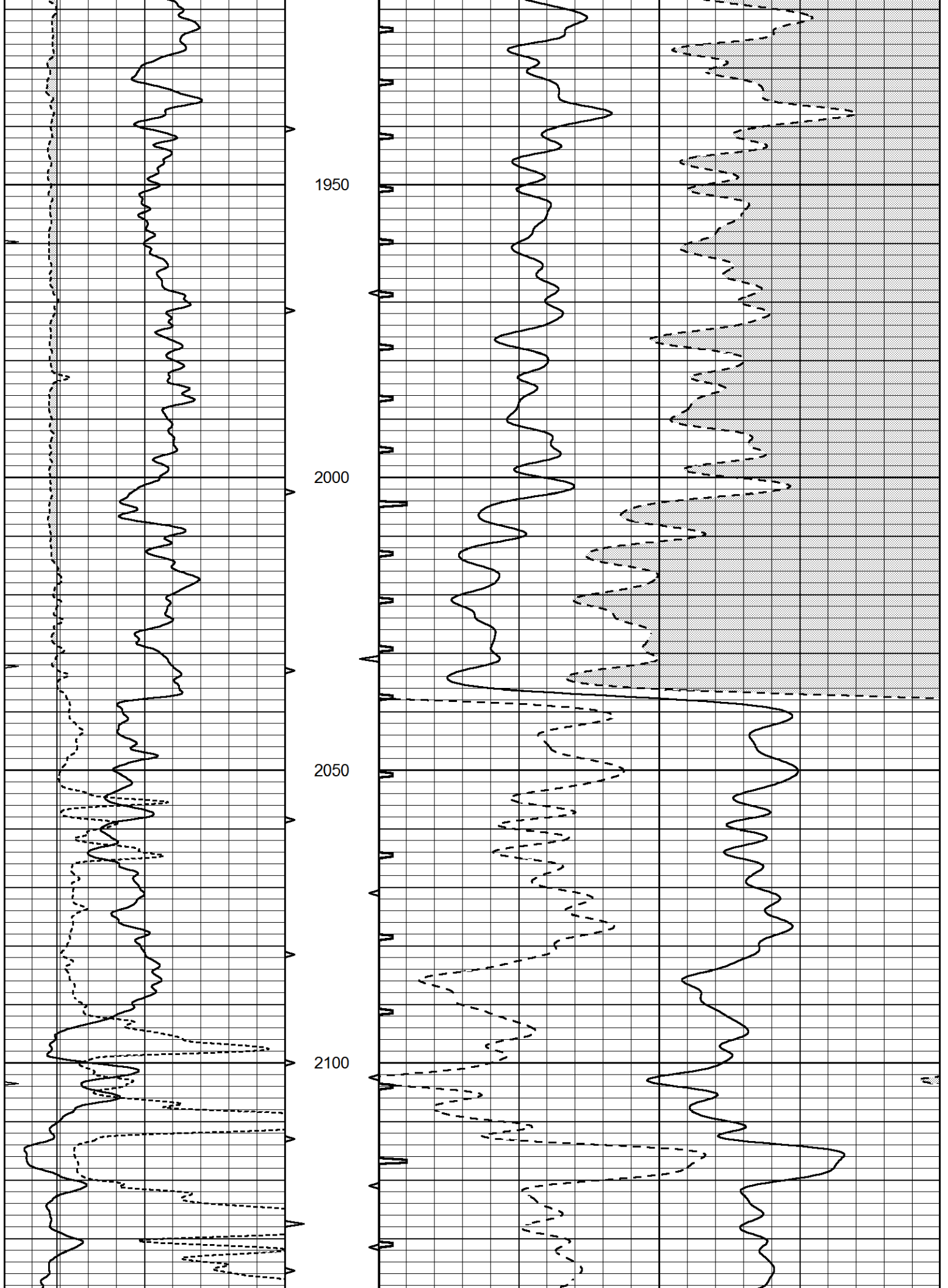
1750

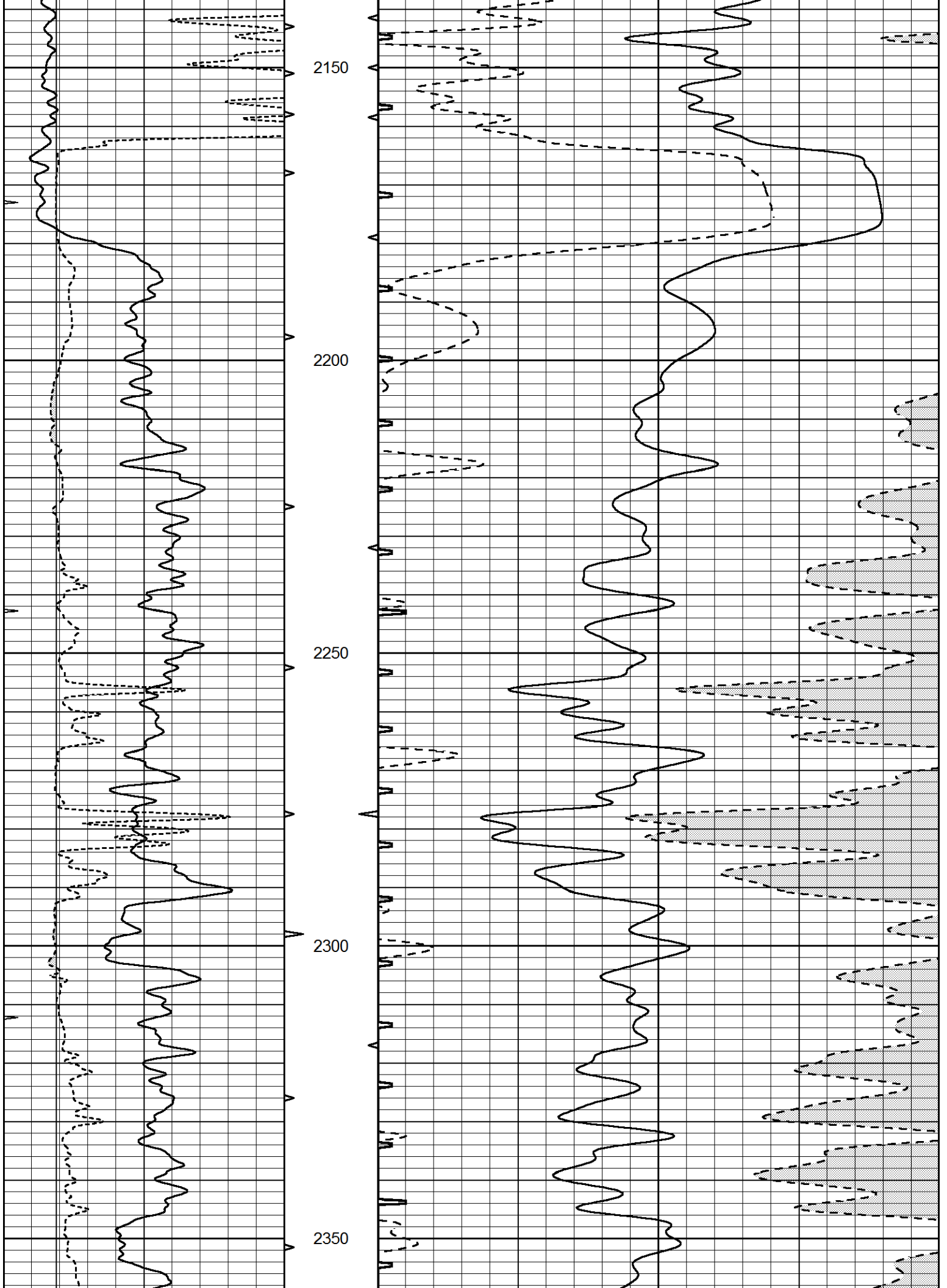
1800

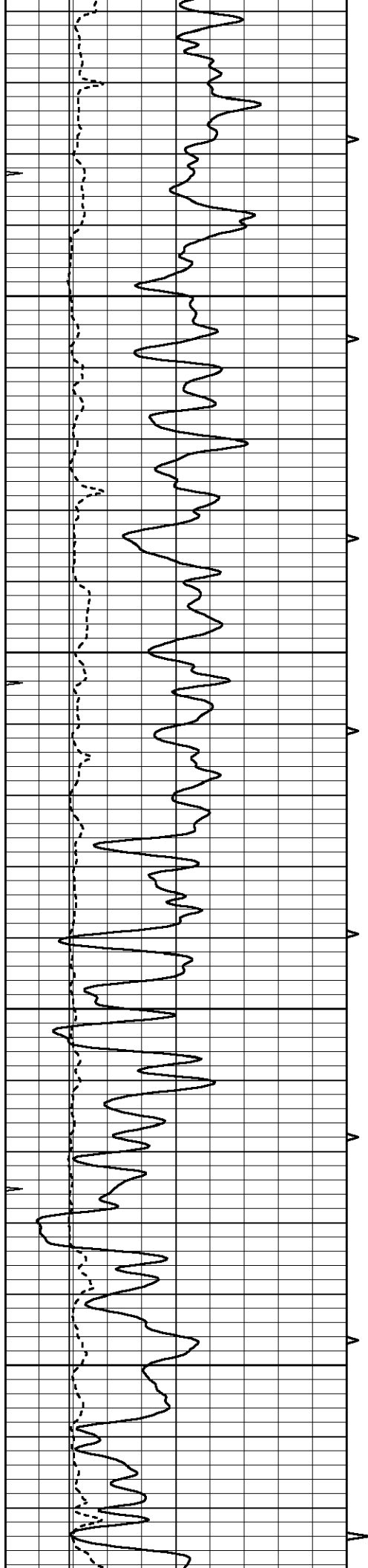
1850

1900







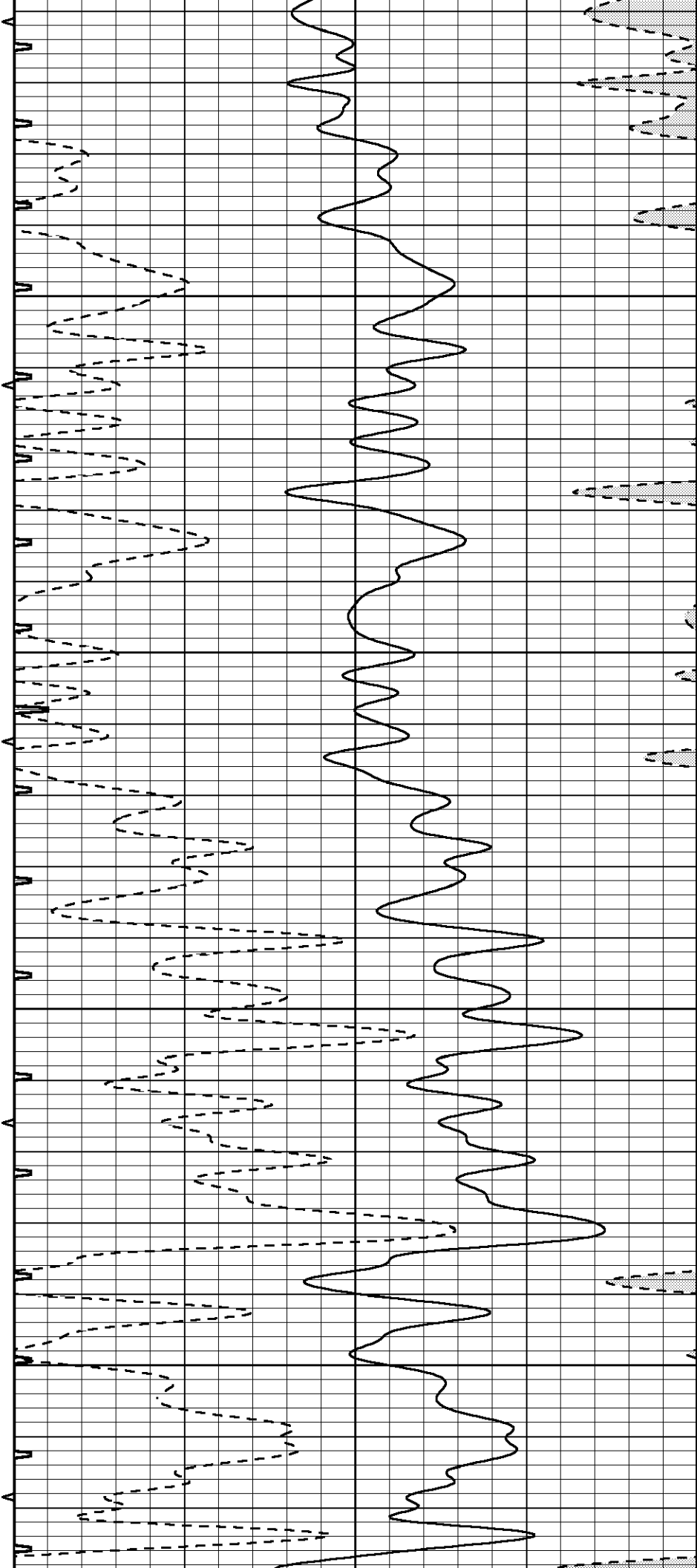


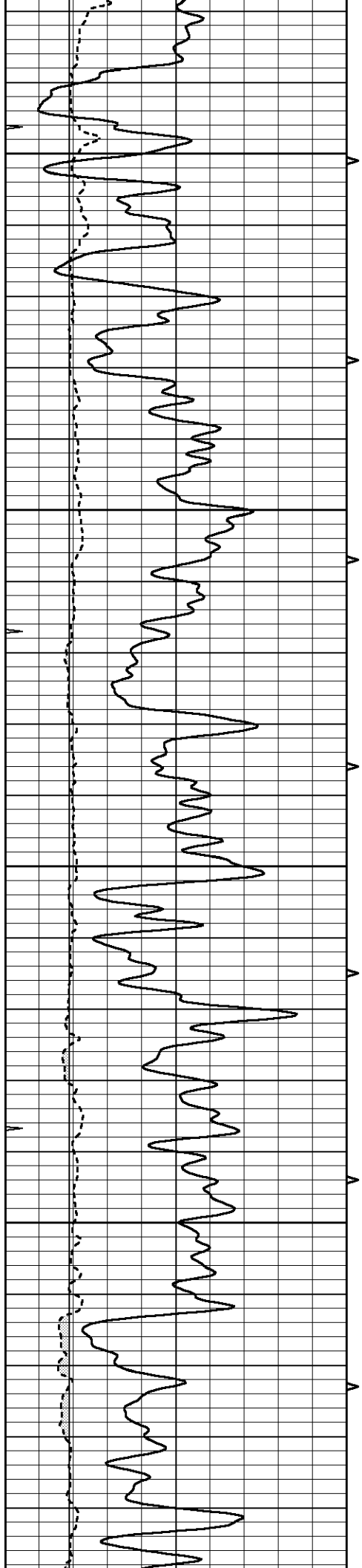
2400

2450

2500

2550



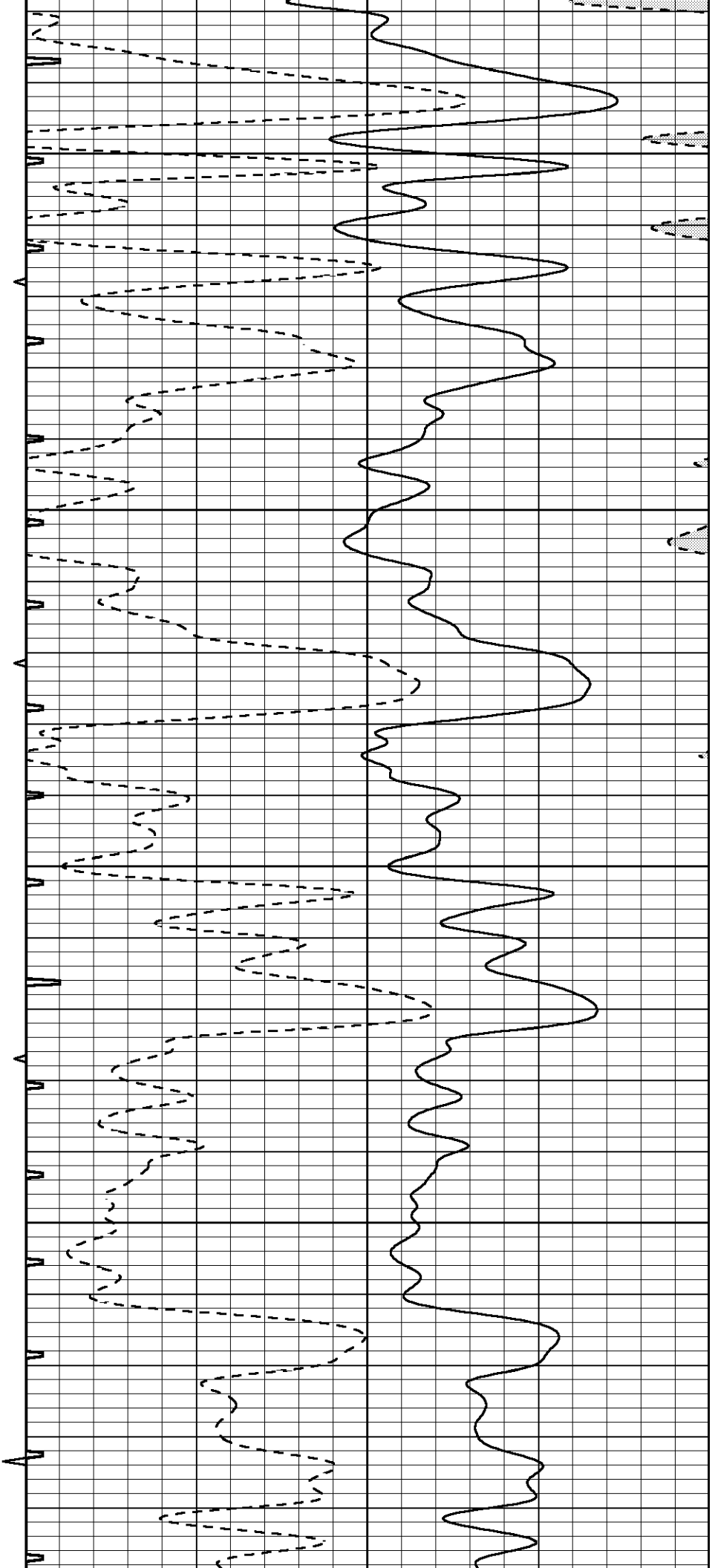


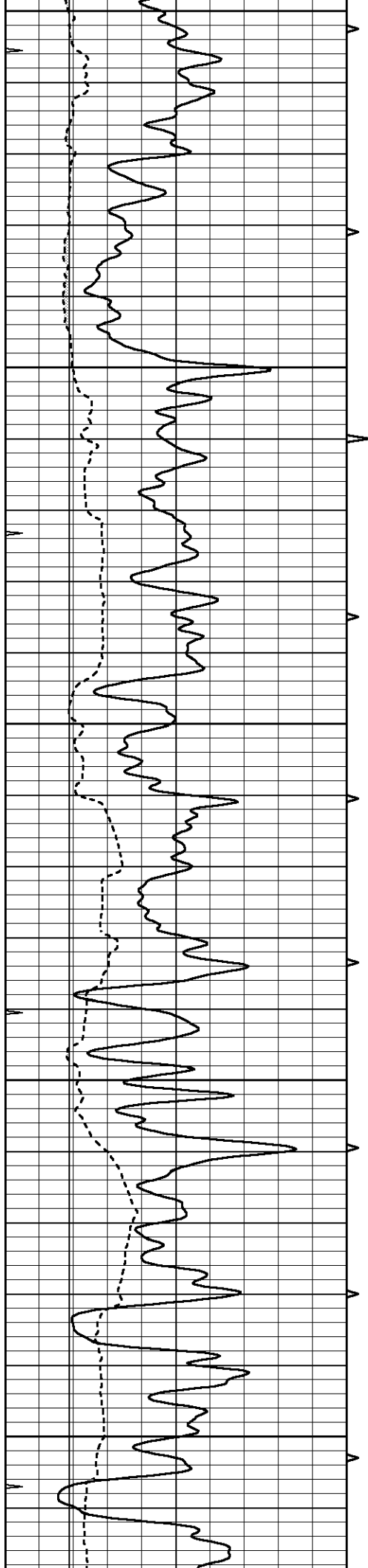
2600

2650

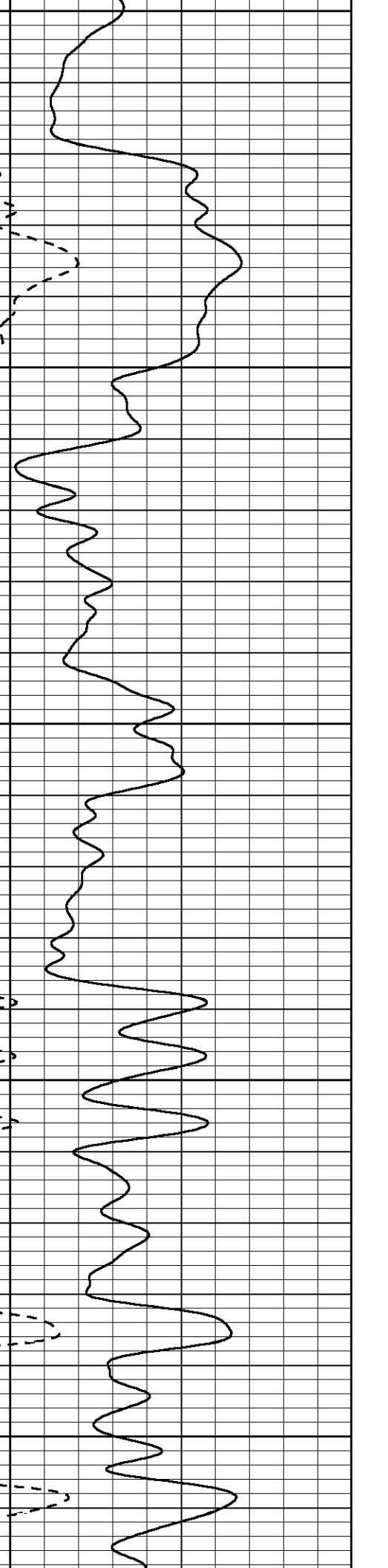
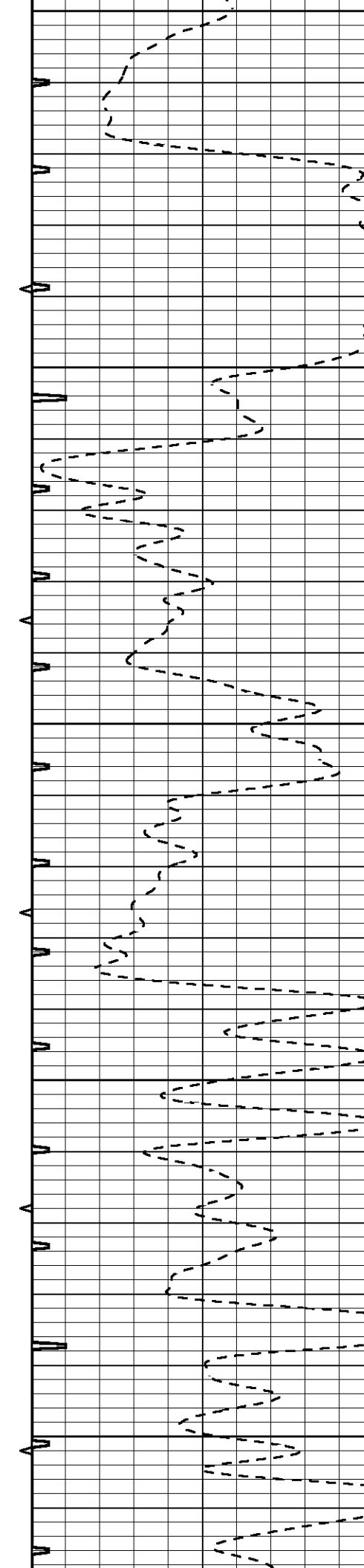
2700

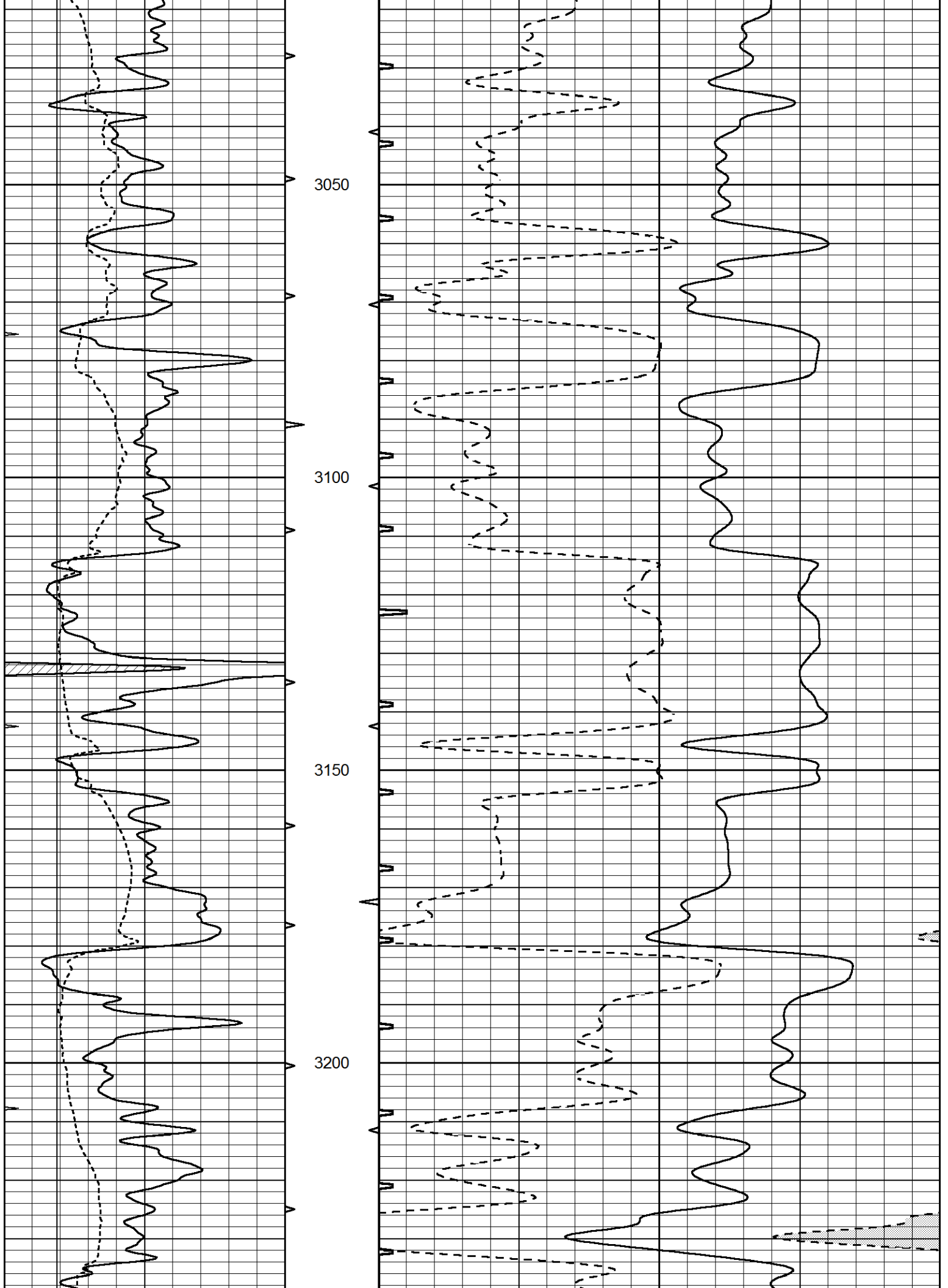
2750

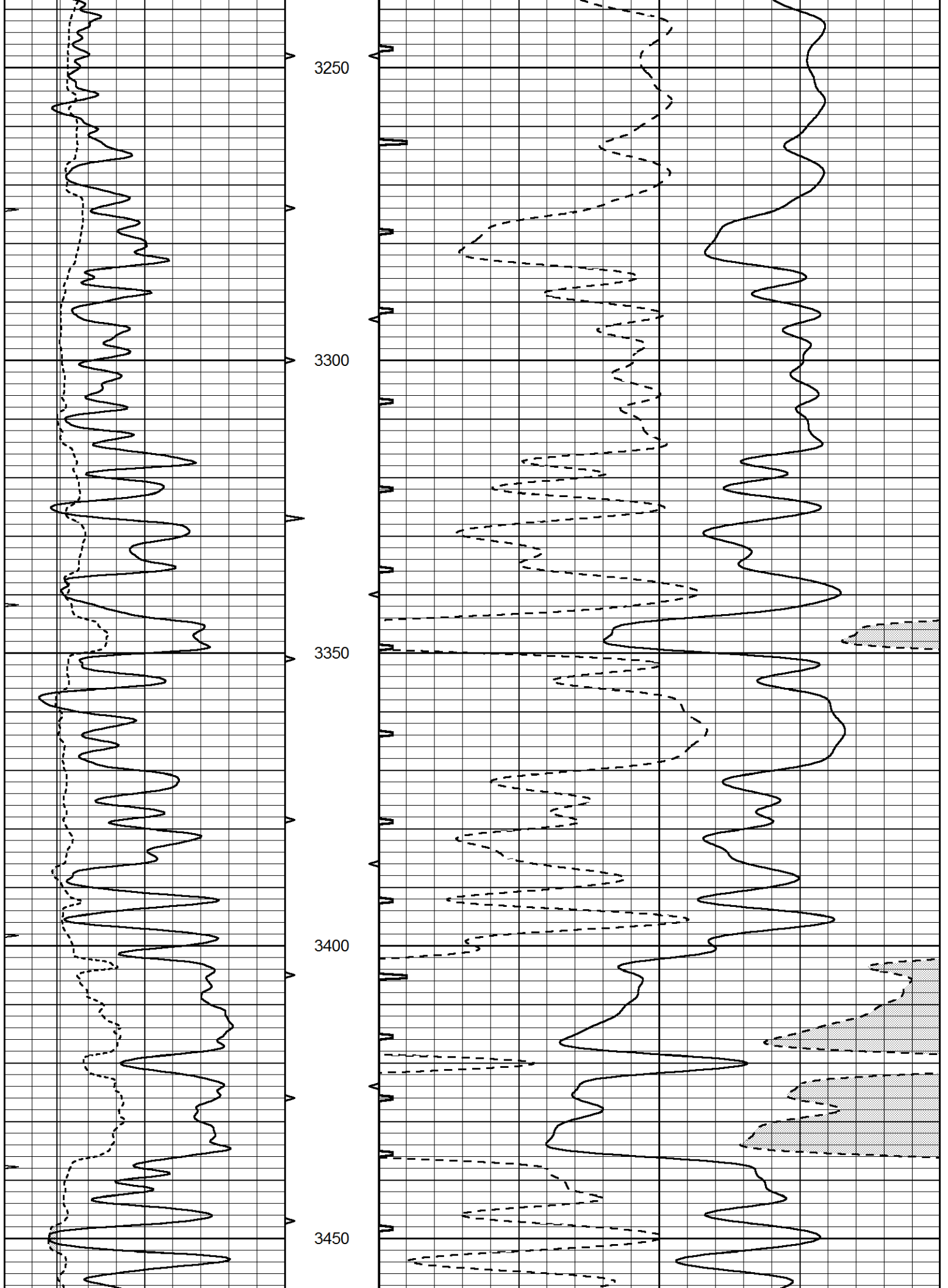


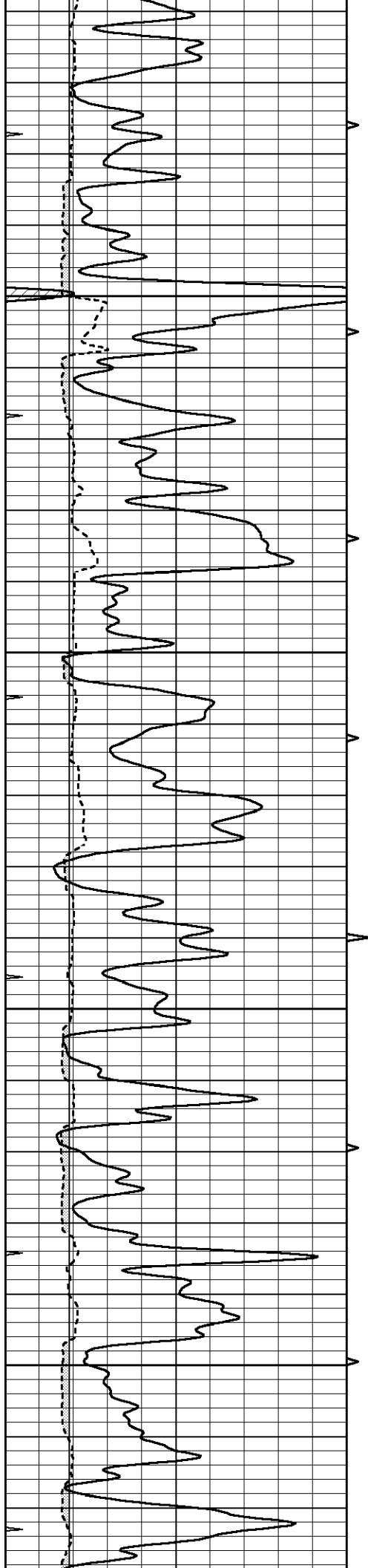


2800
2850
2900
2950
3000







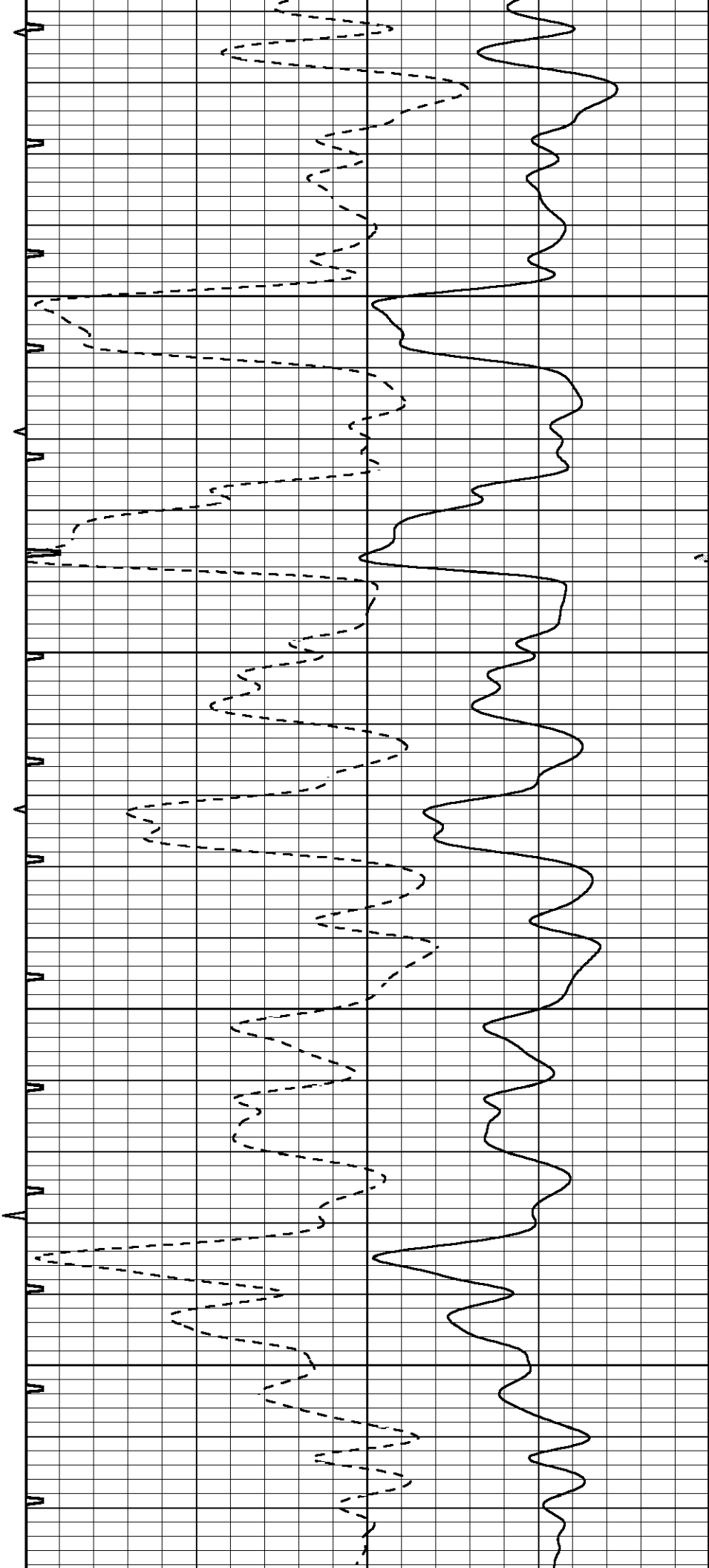


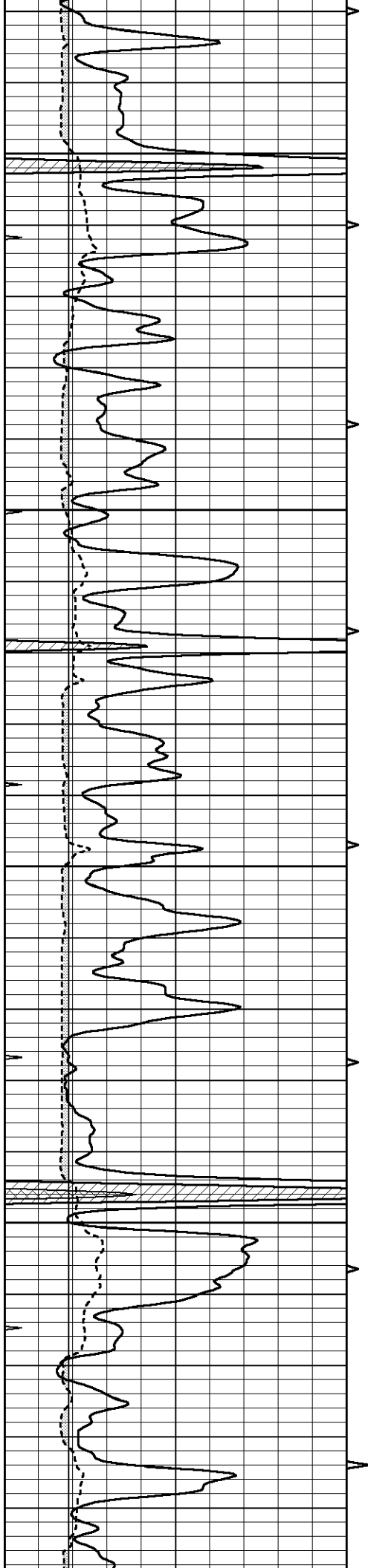
3500

3550

3600

3650



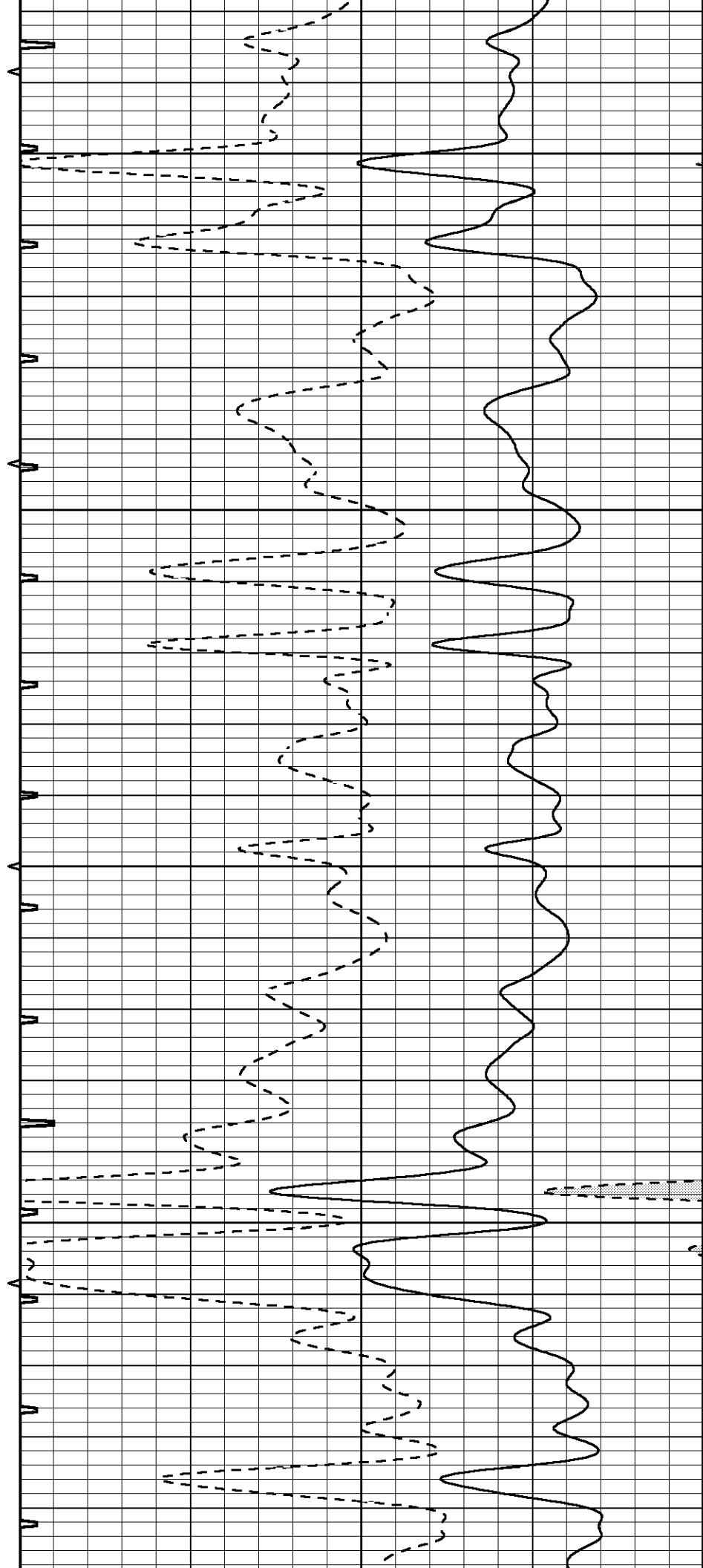


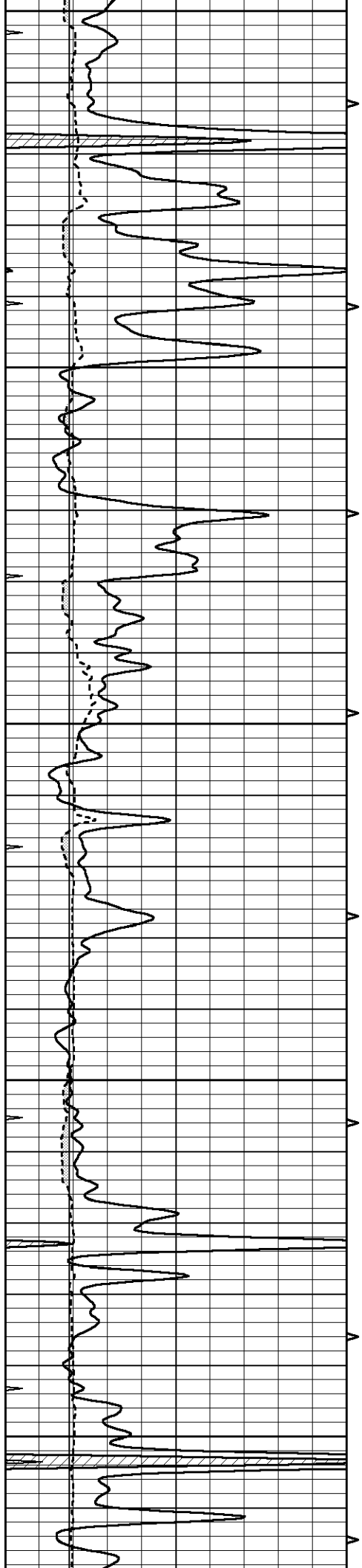
3700

3750

3800

3850





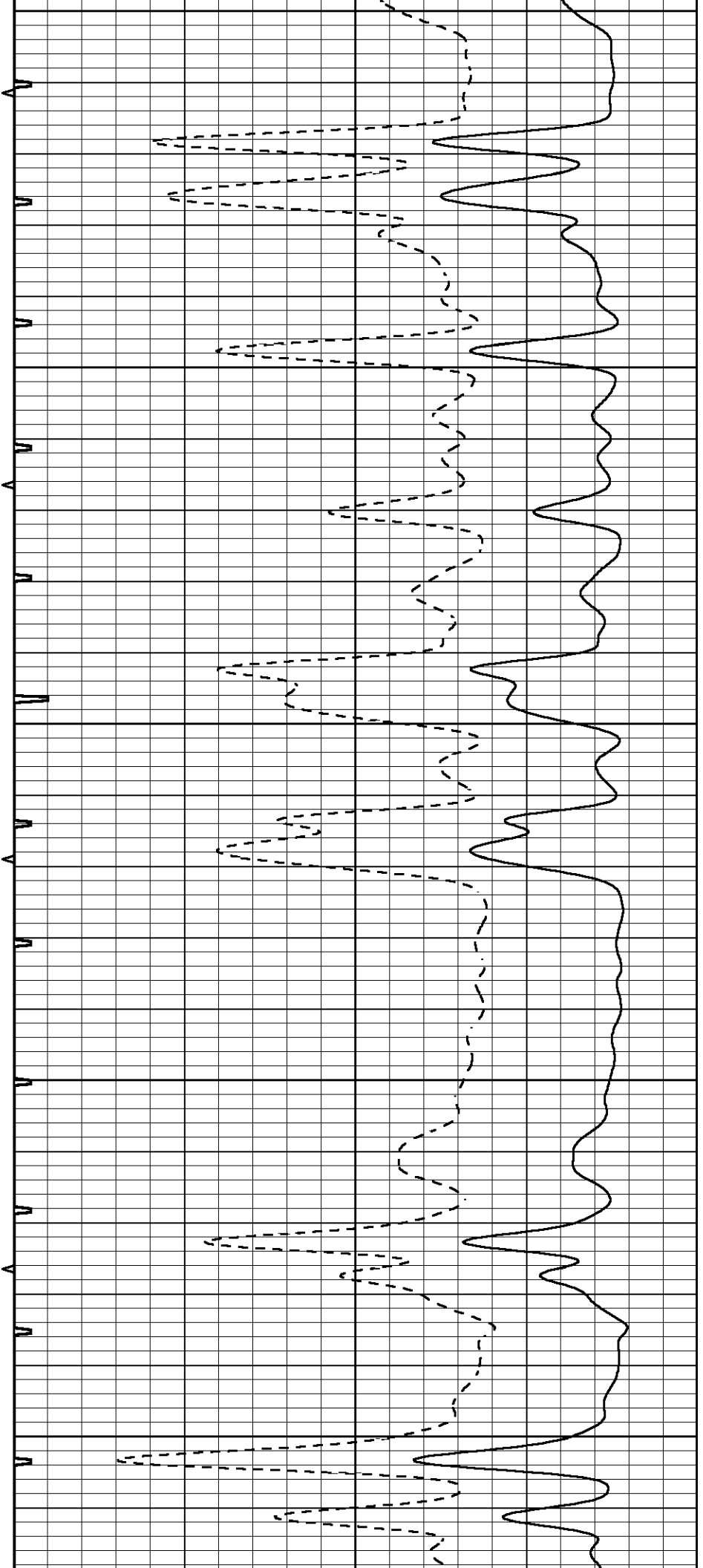
3900

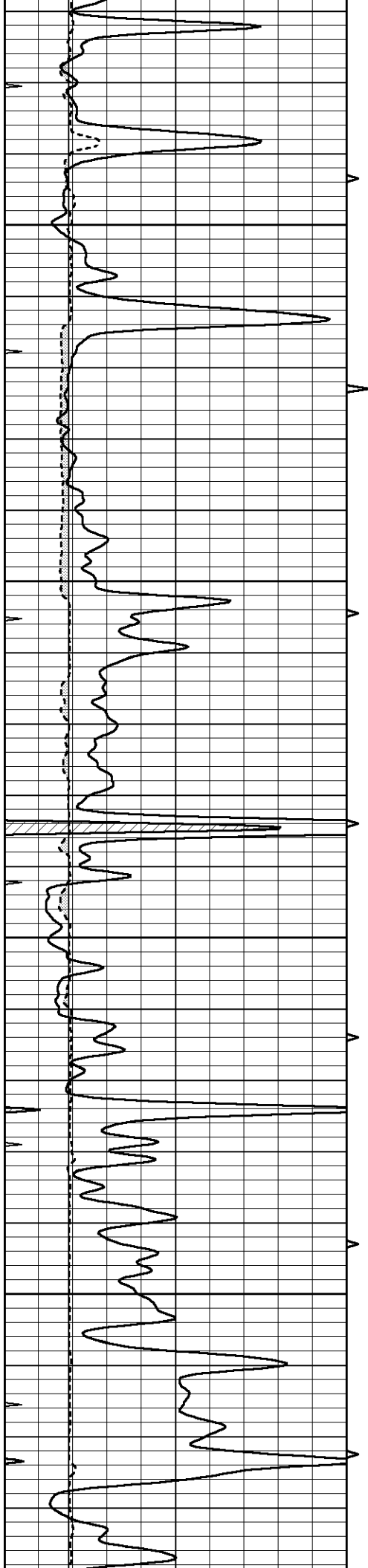
3950

4000

4050

4100



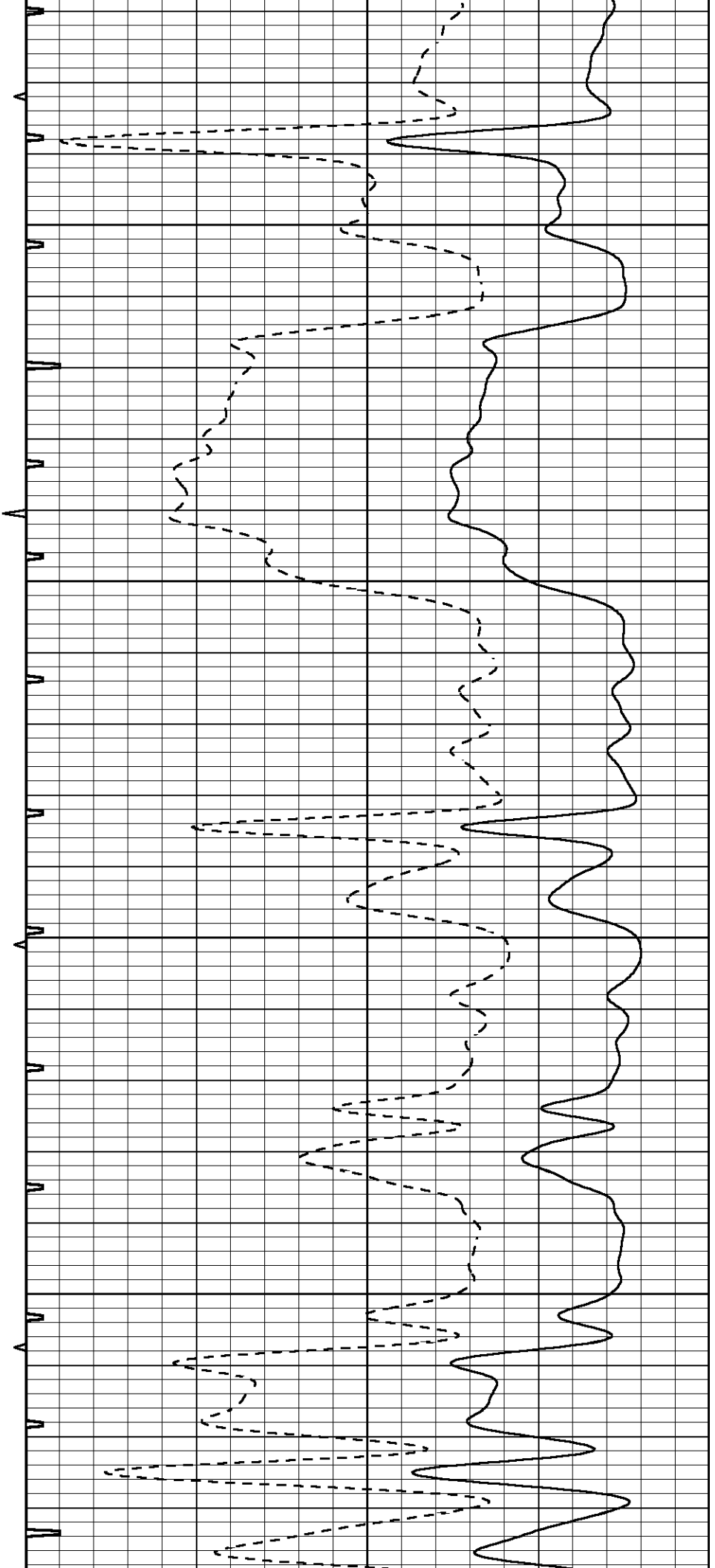


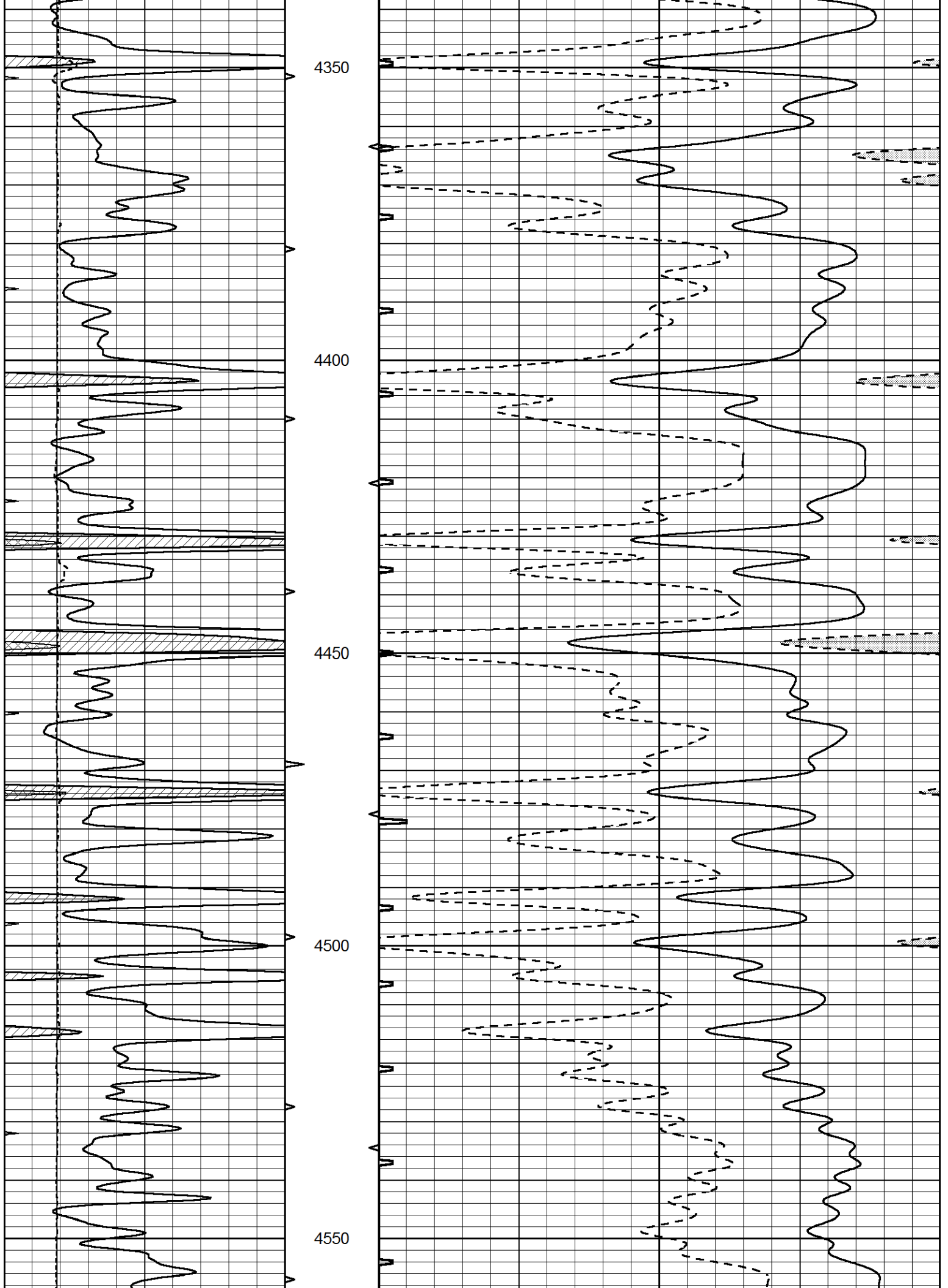
4150

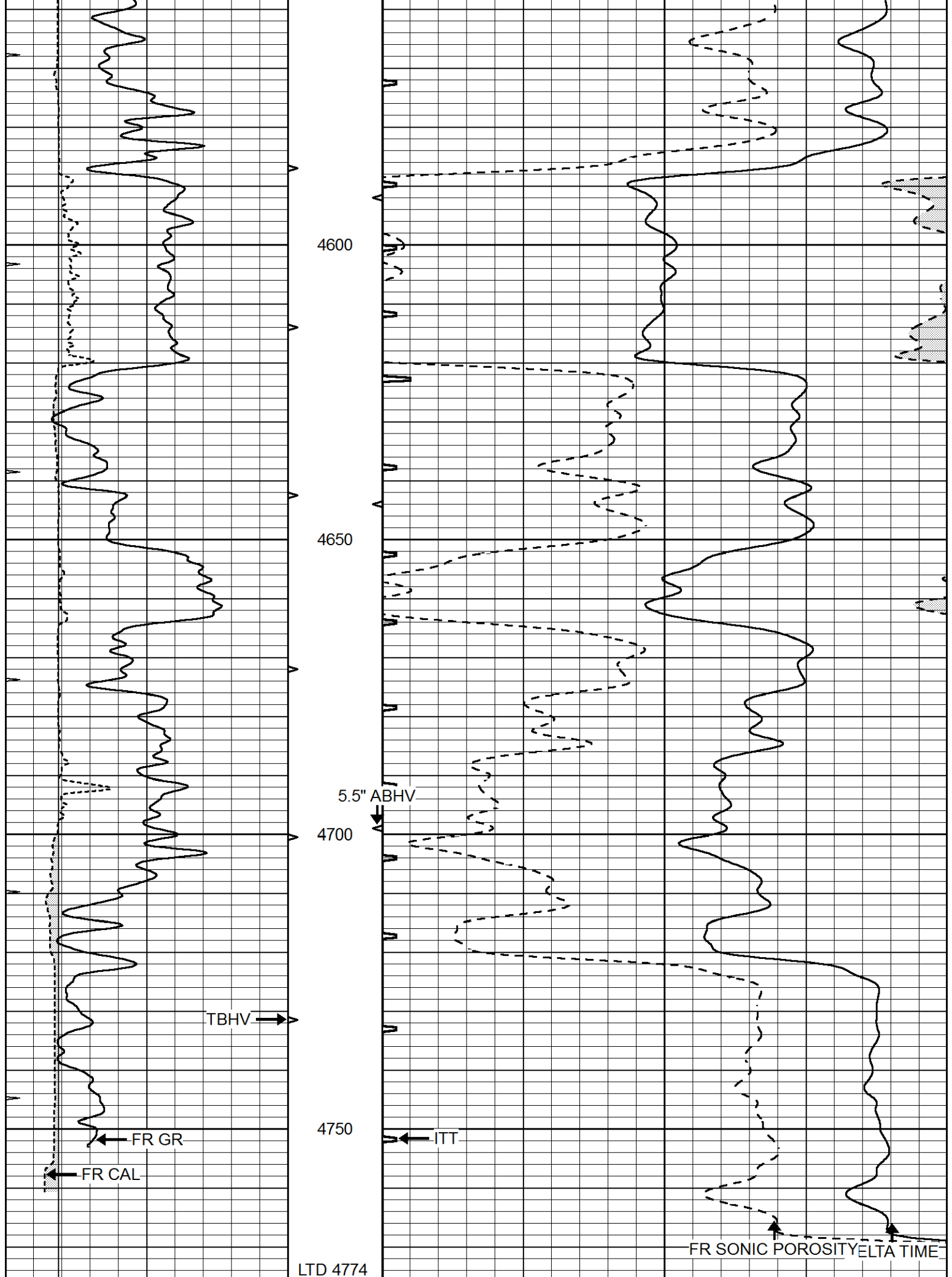
4200

4250

4300







4600

4650

4700

4750

LTD 4774

TBHV →

← FR GR

← FR CAL

5.5" ABHV

← ITT

FR SONIC POROSITY DELTA TIME

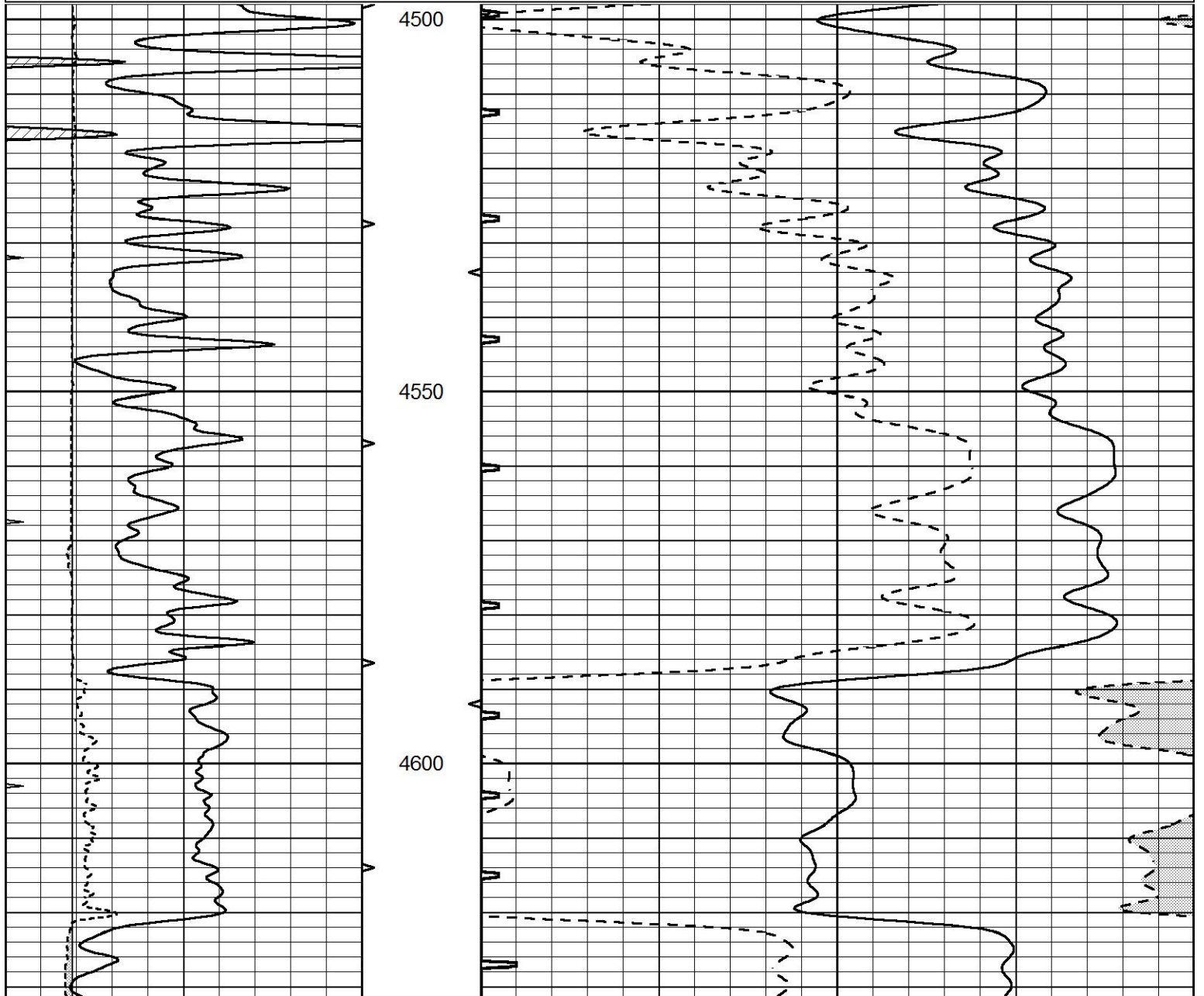
0	GAMMA RAY (GAPI)	150	ABHV	140	DELTA TIME (usec/ft)	40	
6	CALIPER (in)	16	10 (ft3)	0	30	SONIC POROSITY (pu)	-10
0	MINMK	20	TBHV	0	ITT (msec)	20	
			0 (ft3)	10			

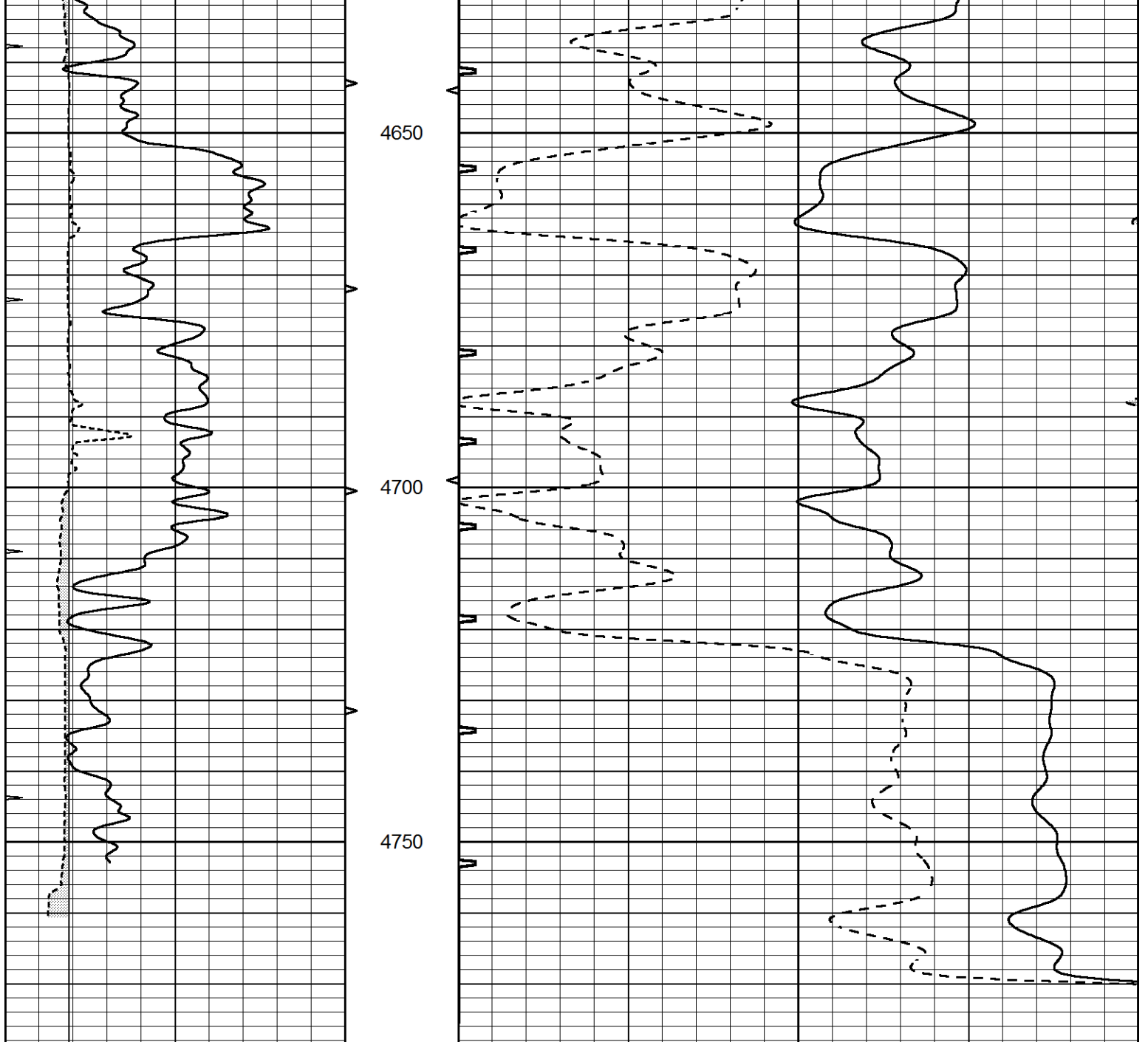


REPEAT SECTION

Database File 5932pe.db
 Dataset Pathname pass5.1
 Presentation Format slt
 Dataset Creation Wed Jan 05 18:06:55 2022
 Charted by Depth in Feet scaled 1:240

0	GAMMA RAY (GAPI)	150	ABHV	140	DELTA TIME (usec/ft)	40	
6	CALIPER (in)	16	10 (ft3)	0	30	SONIC POROSITY (pu)	-10
0	MINMK	20	TBHV	0	ITT (msec)	20	
			0 (ft3)	10			





0	GAMMA RAY (GAPI)	150	ABHV	140	DELTA TIME (usec/ft)	40
6	CALIPER (in)	16	10 (ft3) 0	30	SONIC POROSITY (pu)	-10
0	MINMK	20	TBHV	0	ITT (msec)	20
			0 (ft3) 10			