

MICRO
LOG



Company EAGLE CREEK CORPORATION
Well PATTON #1-1
Field HUGOTON NORTH
County SCOTT State KANSAS

Location: API #: 15-171-21283-0000
1320' FNL & 335' FEL
W/2 - E/2 - E/2 - NE
Permanent Datum GROUND LEVEL Elevation 2313
Log Measured From KELLY BUSHING 7' A.G.L.
Drilling Measured From KELLY BUSHING
SEC 1 TWP 20S RGE 33W
Other Services
CDL/CNL/PE
DIL/SONIC
Elevation
K.B. 2320
D.F. 2318
G.L. 2313

Date	1/5/22		
Run Number	TWO		
Depth Driller	4775		
Depth Logger	4774		
Bottom Logged Interval	4748		
Top Log Interval	3400		
Casing Driller	8 5/8"@252'		
Casing Logger	252		
Bit Size	7 7/8"		
Type Fluid in Hole	CHEMICAL MUD	CHLORIDES 4.000 PPM	
Density / Viscosity	9.3/52		
pH / Fluid Loss	10.5/8.0		
Source of Sample	FLOWLINE		
Rm @ Meas. Temp	1.10@60F		
Rmf @ Meas. Temp	.825@60F		
Rmc @ Meas. Temp	1.32@60F		
Source of Rmf / Rmc	MEASUREMENT		
Rm @ BHT	.537@123F		
Time Circulation Stopped	4:5 HOURS		
Time Logger on Bottom	6:15 P.M.		
Maximum Recorded Temperature	123F		
Equipment Number	922339		
Location	HAYS, KANSAS		
Recorded By	JEFF LUEBBERS		
Witnessed By	BOB O'DELL		

<<< Fold Here >>>

All interpretations are opinions based on inferences from electrical or other measurements and we cannot and do not guarantee the accuracy or correctness of any interpretation, and we shall not, except in the case of gross or willful negligence on our part, be liable or responsible for any loss, costs, damages, or expenses incurred or sustained by anyone resulting from any interpretation made by any of our officers, agents or employees. These interpretations are also subject to our general terms and conditions set out in our current Price Schedule.

15-171-21283-0000 Comments

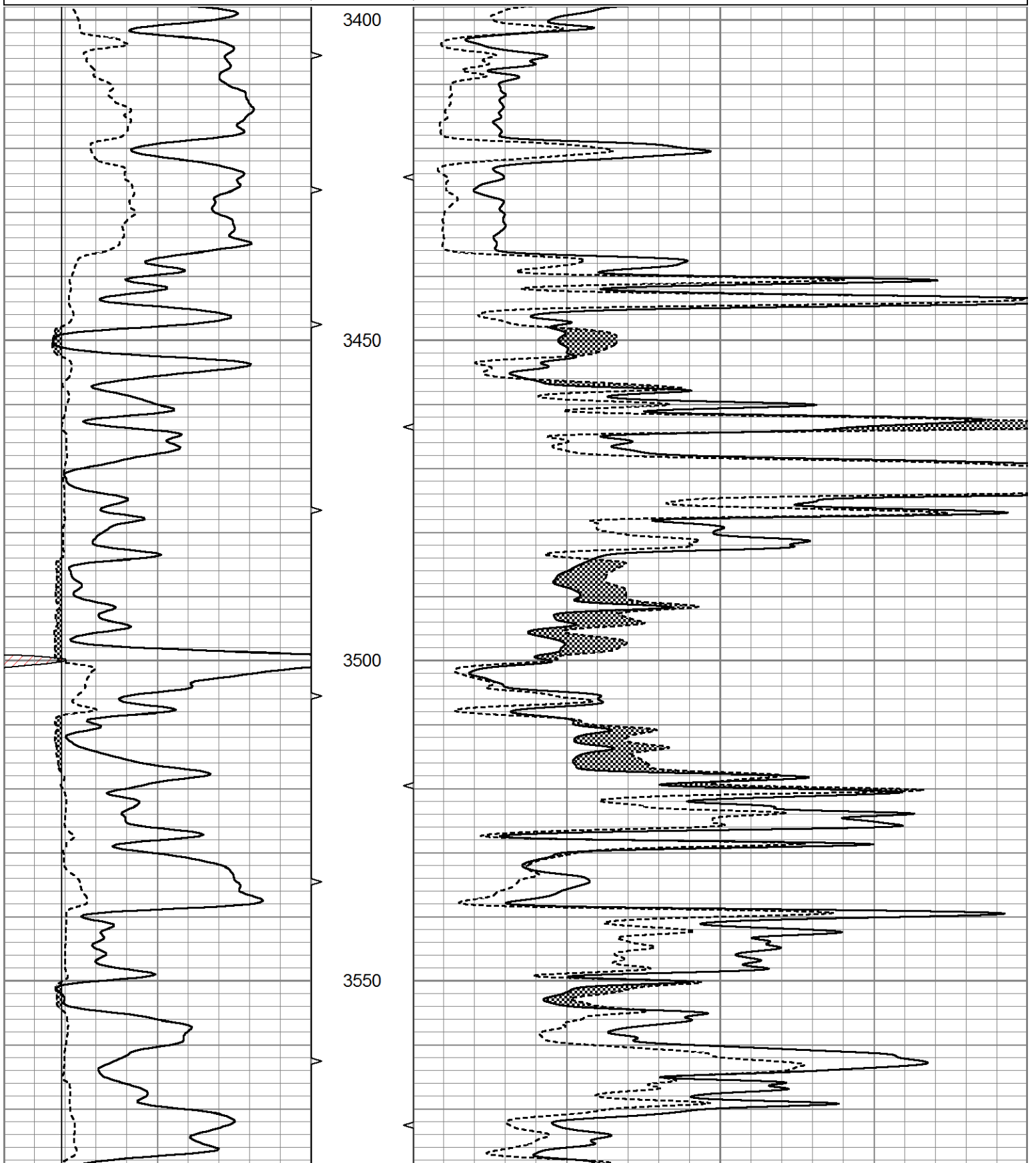
THANK YOU FOR USING ELI WIRELINE HAYS, KANSAS (785) 628-6395
DIRECTIONS
SCOTT CITY, KS., 8S. ON HWY 83, W. INTO AND BACK NORTH

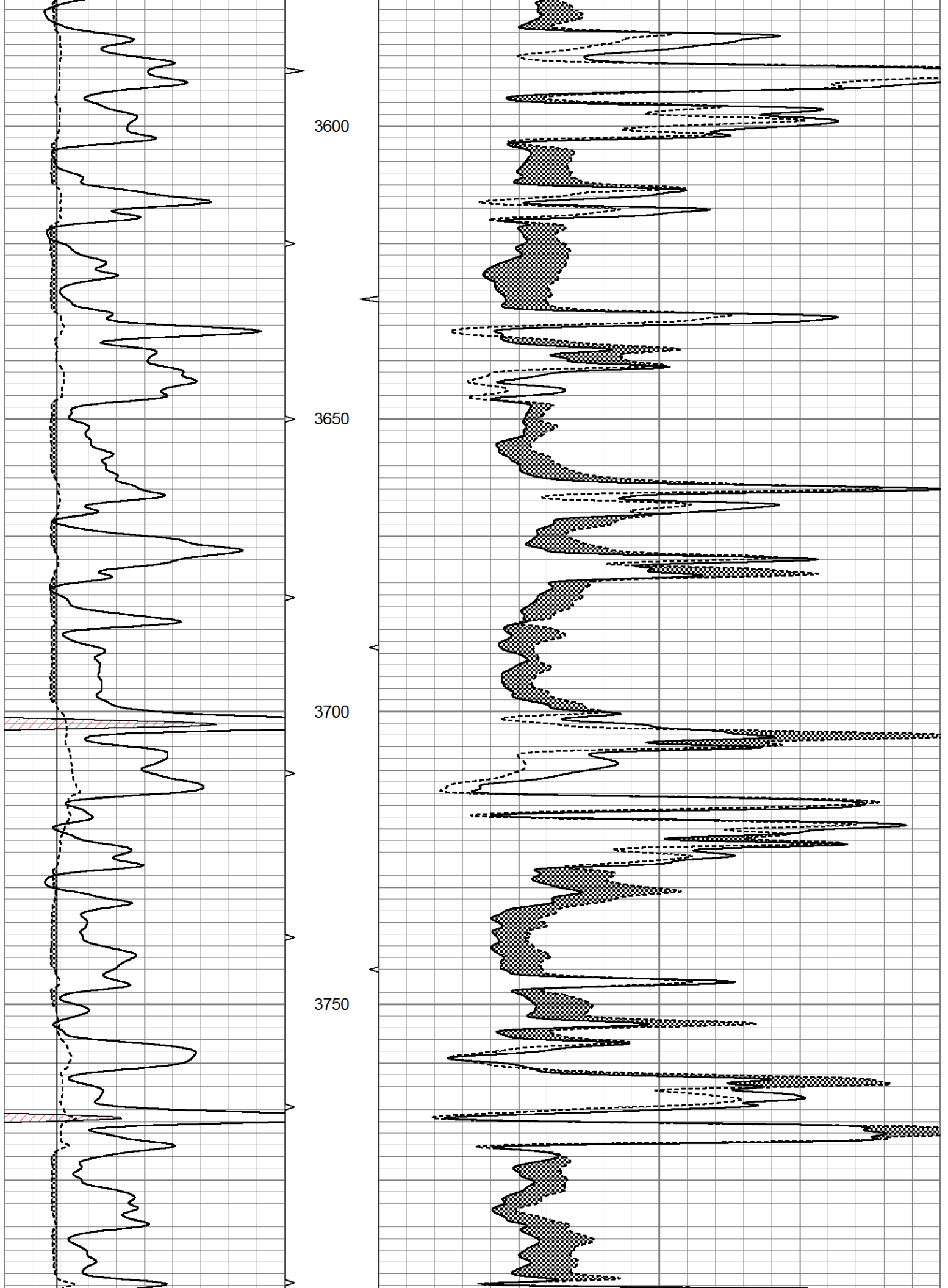


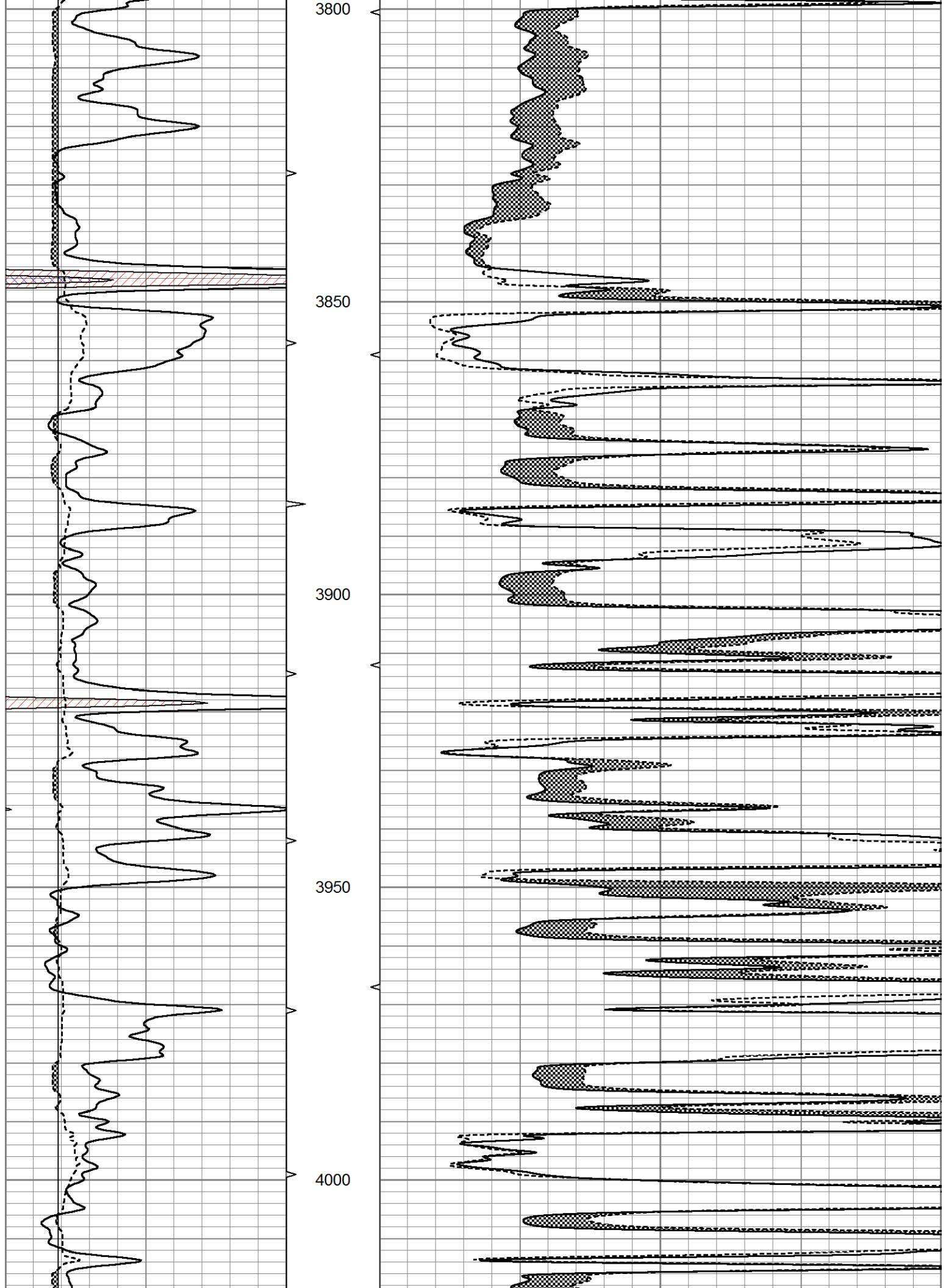
MAIN SECTION

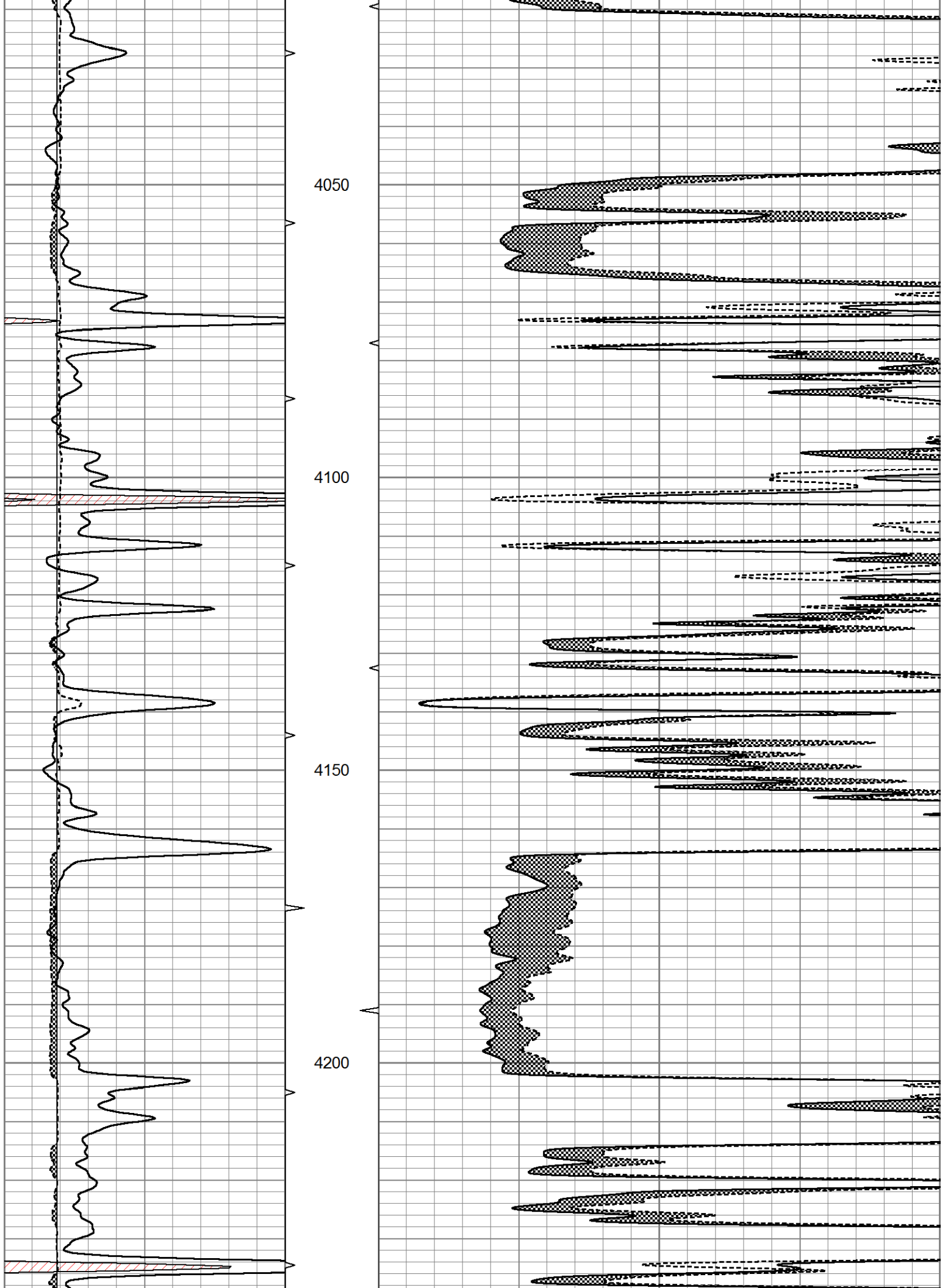
Database File 5932pe.db
 Dataset Pathname pass6.1
 Presentation Format micro
 Dataset Creation Wed Jan 05 18:47:26 2022
 Charted by Depth in Feet scaled 1:240

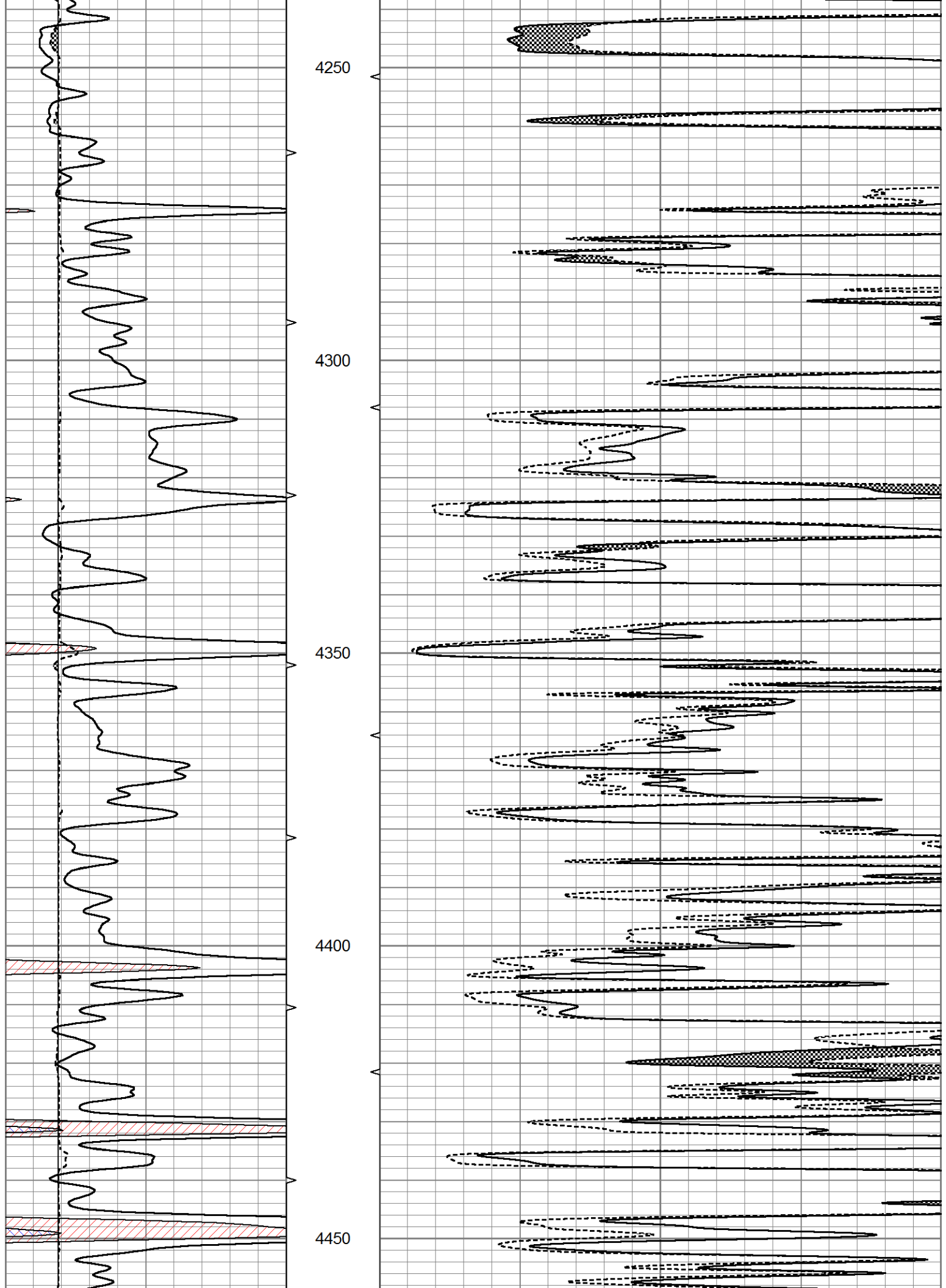
0	GR (GAPI)	150	ABHV	0	MEL20 (Ohm-m)	40
6	MELCAL (in)	16	10 (ft3)	0	MEL15 (Ohm-m)	40
			ABHV			
			0 (ft3)	10		

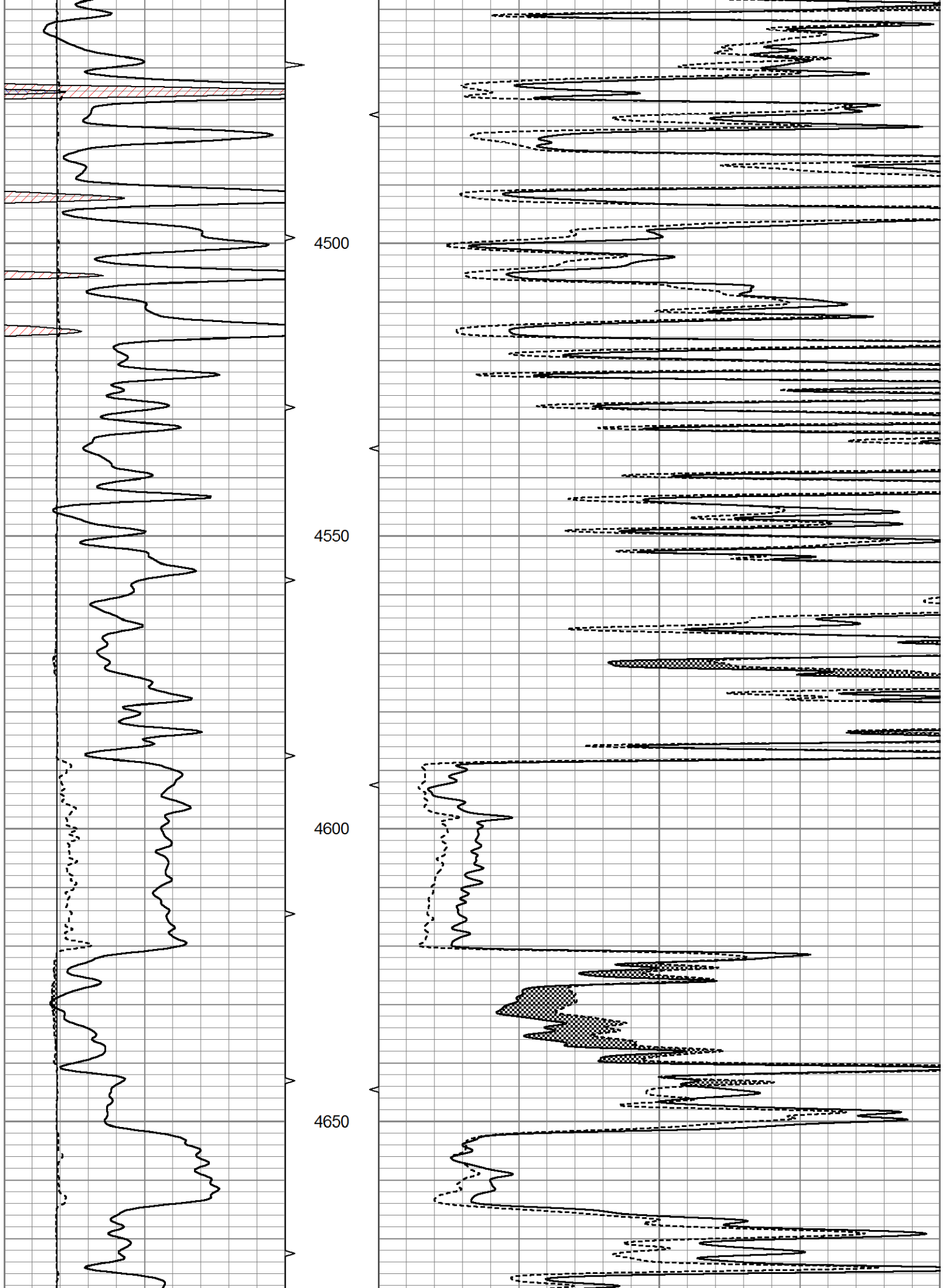


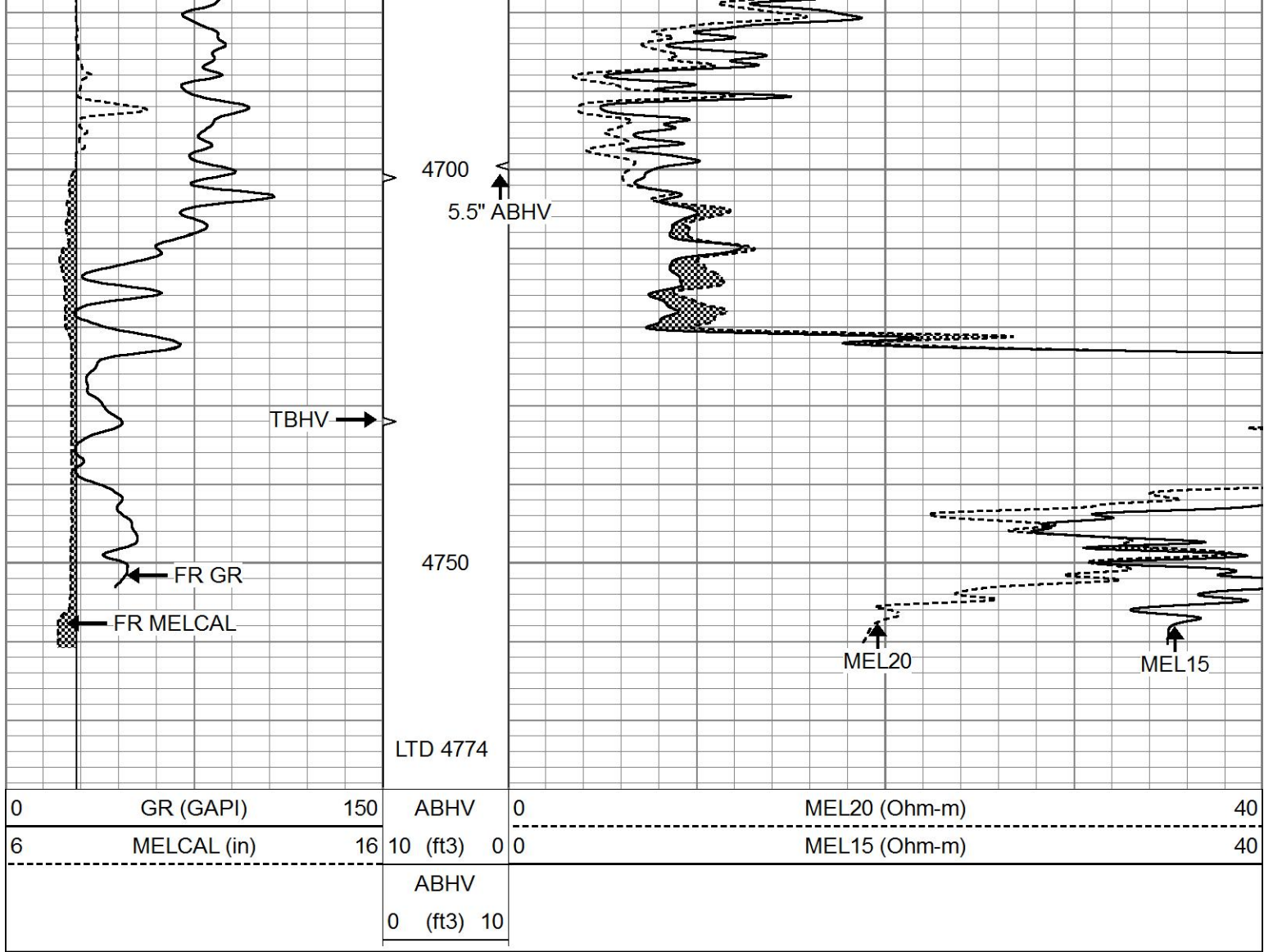








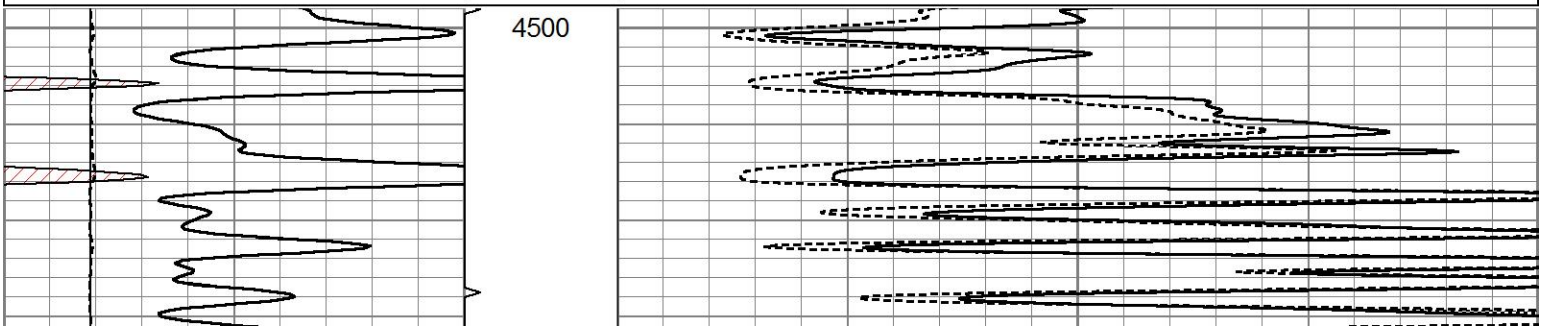


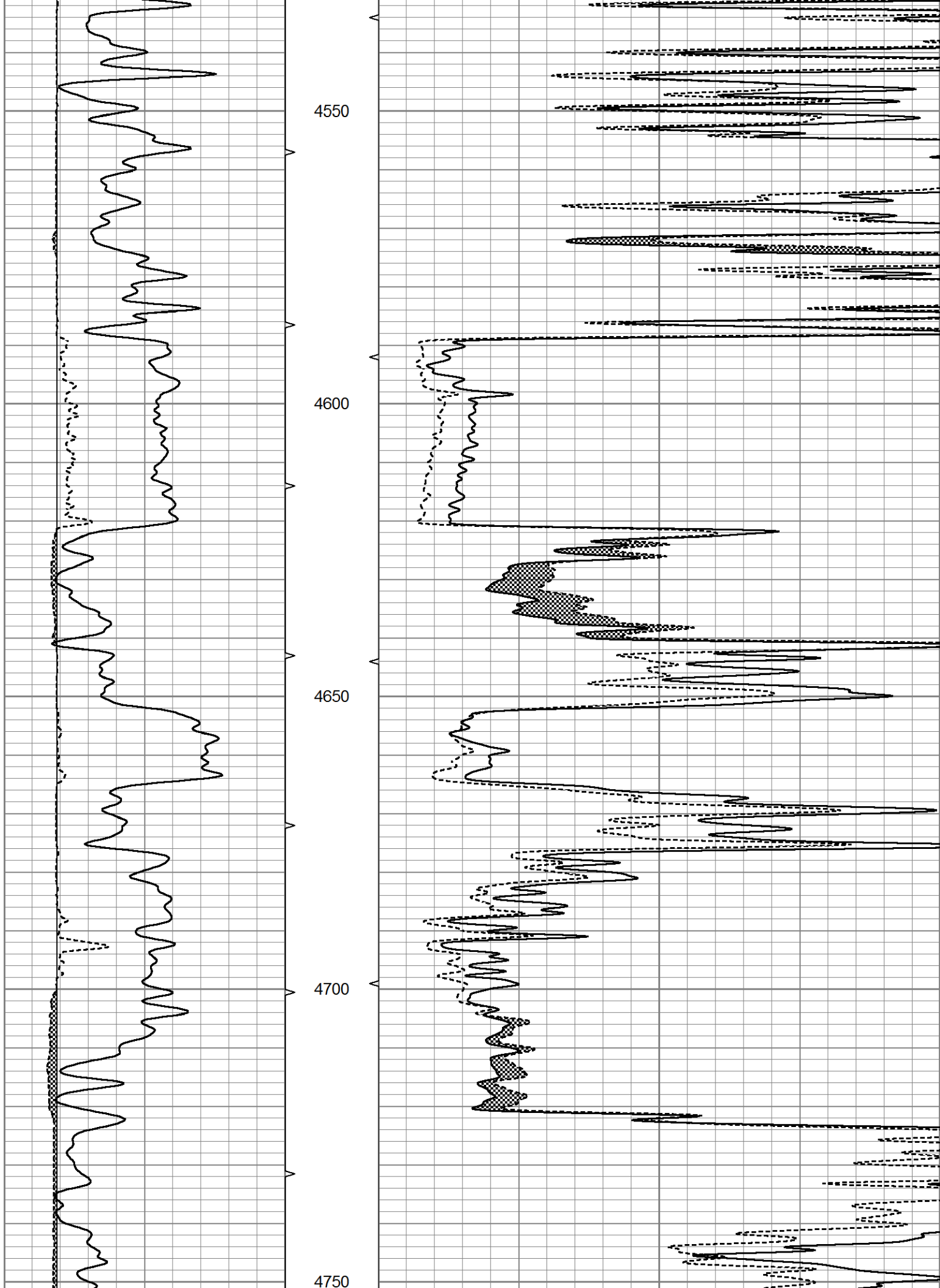


REPEAT SECTION

Database File 5932pe.db
 Dataset Pathname pass5.1
 Presentation Format micro
 Dataset Creation Wed Jan 05 18:06:55 2022
 Charted by Depth in Feet scaled 1:240

0	GR (GAPI)	150	ABHV	0	MEL20 (Ohm-m)	40
6	MELCAL (in)	16	10 (ft3)	0	MEL15 (Ohm-m)	40
			ABHV			
			0 (ft3)	10		





0	GR (GAPI)	150	ABHV	0	MEL20 (Ohm-m)	40
6	MELCAL (in)	16	10 (ft3)	0	MEL15 (Ohm-m)	40
			ABHV			
			0 (ft3)	10		

Calibration Report

Database File 5932pe.db
 Dataset Pathname pass6.1
 Dataset Creation Wed Jan 05 18:47:26 2022

MICRO Calibration Report

Serial Number: 070912
 Tool Model: ProbeN
 Performed: Sun Jan 02 22:00:45 2022

Caliper Calibration: Gain=3.509 Offset=0.561
 References Low Cal High Cal
 8.000 16.000
 Readings 2.120 4.400

1.5" Calibration: Gain=32.000 Offset=-1.300
 References Low Cal High Cal
 0.000 20.000
 Readings 0.002 1.239

2" Calibration: Gain=42.000 Offset=0.000
 References Low Cal High Cal
 0.000 20.000
 Readings 0.003 1.075

Gamma Ray Calibration Report

Serial Number: 070558
 Tool Model: OPEN_GR
 Performed: Wed Jan 05 15:49:21 2022

Calibrator Value: 1.0 GAPI
 Background Reading: 0.0 cps
 Calibrator Reading: 1.0 cps
 Sensitivity: 0.3000 GAPI/cps