



DUAL INDUCTION LOG

Company EAGLE CREEK CORPORATION
 Well PATTON #1-1
 Field HUGOTON NORTH
 County SCOTT State KANSAS

Location: API #: 15-171-21283-0000
 1320' FNL & 335' FEL
 W/2 - E/2 - E/2 - NE

Permanent Datum GROUND LEVEL Elevation 2313
 Log Measured From KELLY BUSHING 7' A.G.L.
 Drilling Measured From KELLY BUSHING

SEC 1 TWP 20S RGE 33W

Other Services
 CDL/CNL/PE
 MEL/SONIC

Elevation
 K.B. 2320
 D.F. 2318
 G.L. 2313

Date	1/5/22
Run Number	ONE
Depth Driller	4775
Depth Logger	4774
Bottom Logged Interval	4772
Top Log Interval	00
Casing Driller	8 5/8"@252'
Casing Logger	252
Bit Size	7 7/8"
Type Fluid in Hole	CHEMICAL MUD
Density / Viscosity	9.3/52
pH / Fluid Loss	10.5/8.0
Source of Sample	FLOWLINE
Rm @ Meas. Temp	1.10@60F
Rmf @ Meas. Temp	.825@60F
Rmc @ Meas. Temp	1.32@60F
Source of Rmf / Rmc	MEASUREMENT
Rm @ BHT	.537@123F
Time Circulation Stopped	2.5 HOURS
Time Logger on Bottom	3.45 P.M.
Maximum Recorded Temperature	123F
Equipment Number	922339
Location	HAYS, KANSAS
Recorded By	JEFF LUEBBERS
Witnessed By	BOB O'DELL

<<< Fold Here >>>

All interpretations are opinions based on inferences from electrical or other measurements and we cannot and do not guarantee the accuracy or correctness of any interpretation, and we shall not, except in the case of gross or willful negligence on our part, be liable or responsible for any loss, costs, damages, or expenses incurred or sustained by anyone resulting from any interpretation made by any of our officers, agents or employees. These interpretations are also subject to our general terms and conditions set out in our current Price Schedule.

15-171-21283-0000 Comments

THANK YOU FOR USING ELI WIRELINE HAYS, KANSAS (785) 628-6395
 DIRECTIONS
 SCOTT CITY, KS., 8S. ON HWY 83, W. INTO AND BACK NORTH

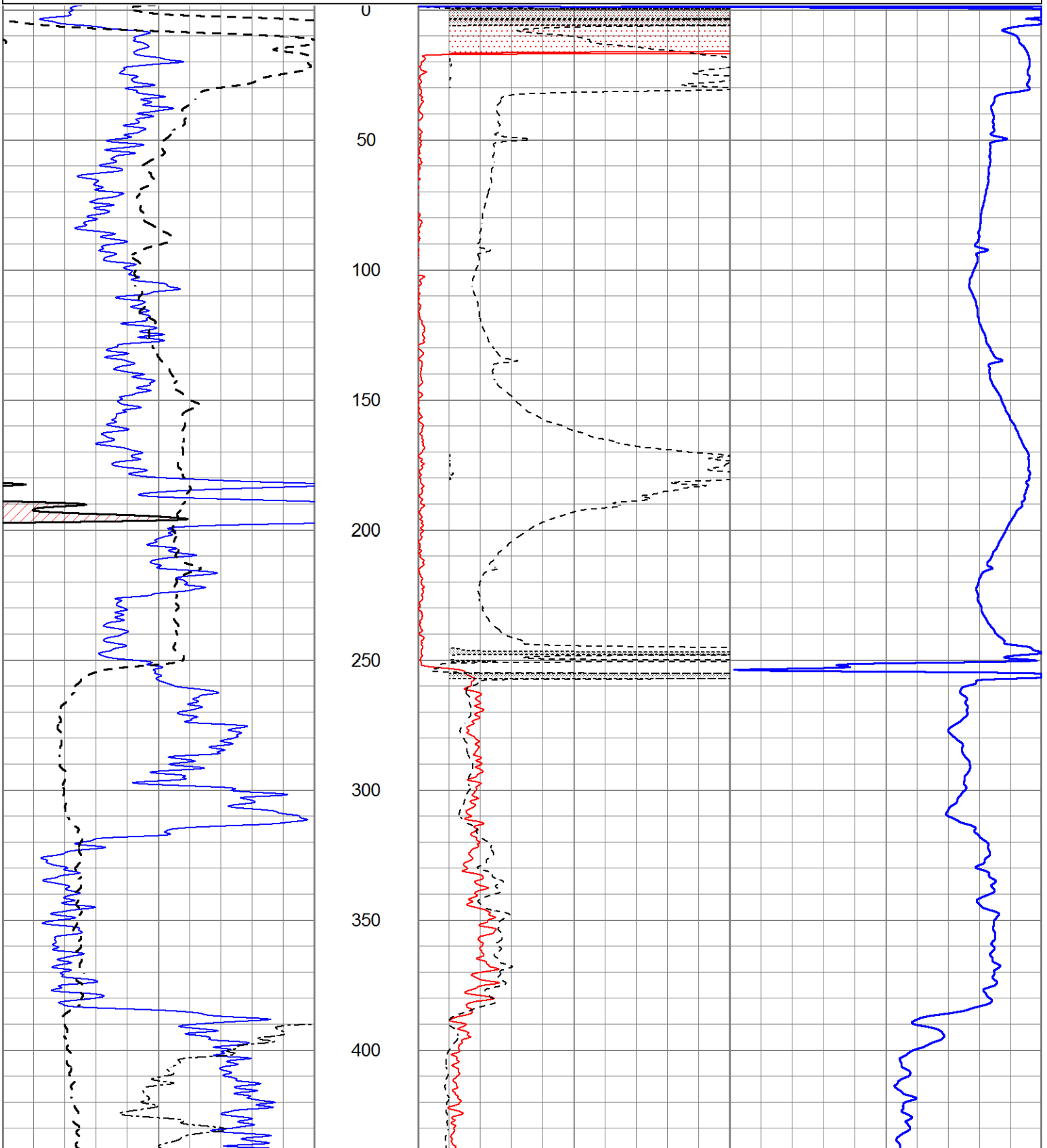


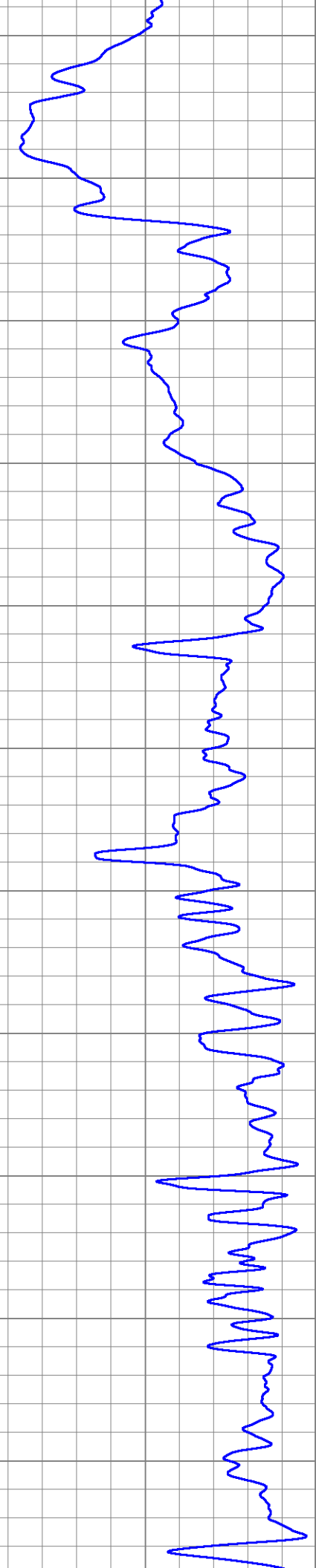
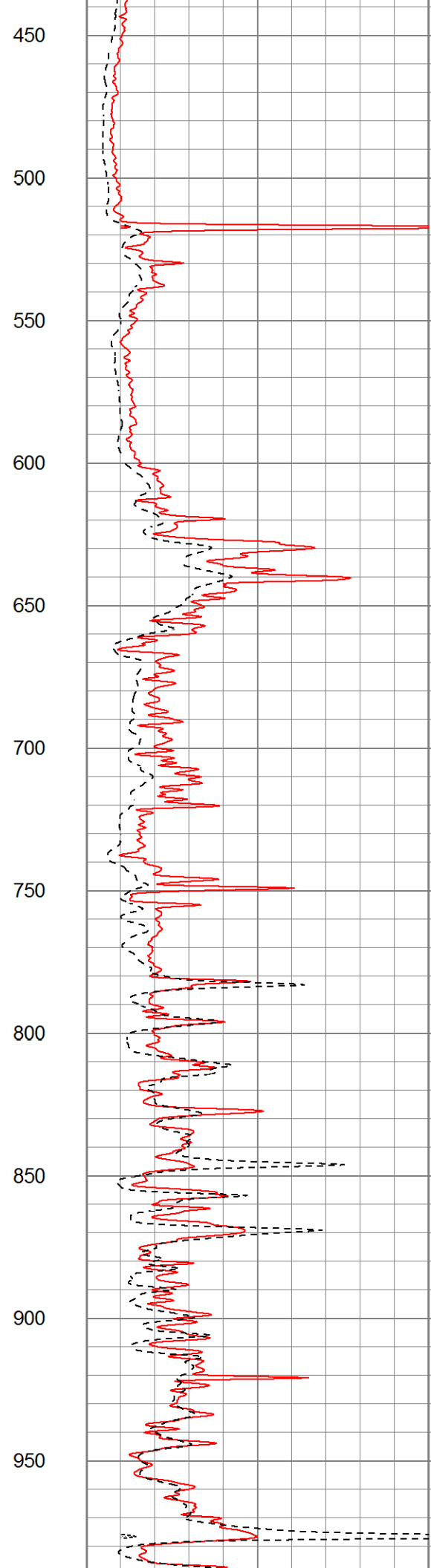
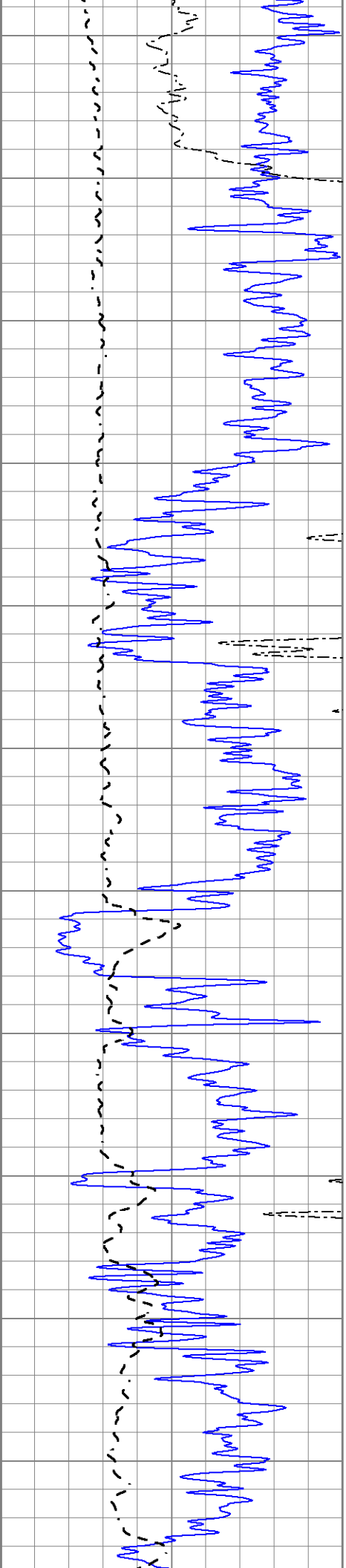
MAIN SECTION

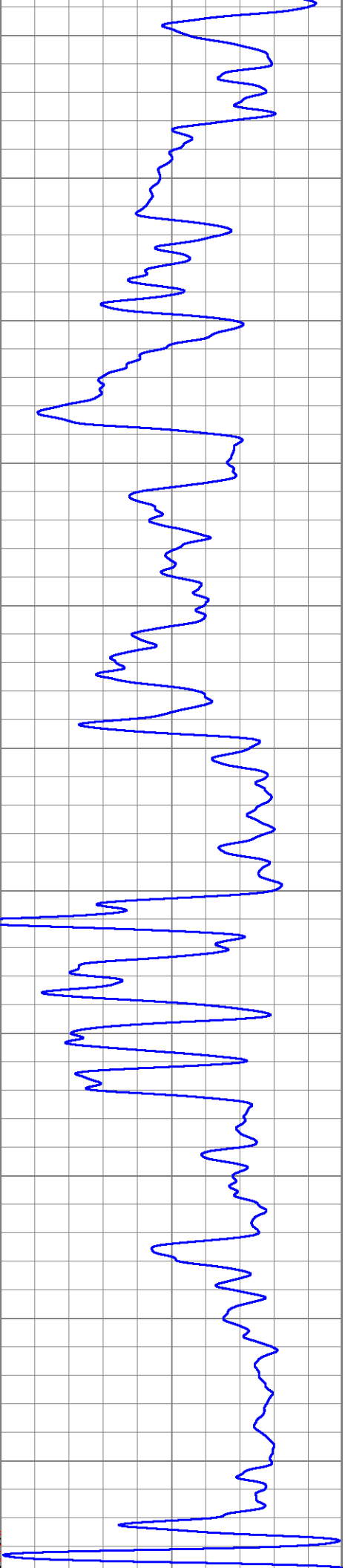
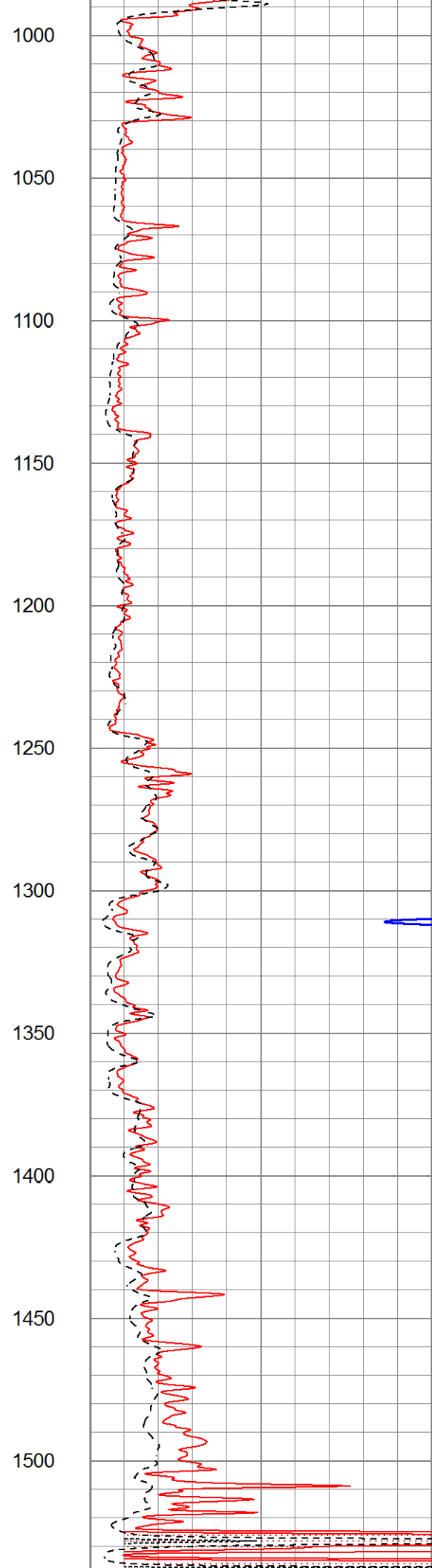
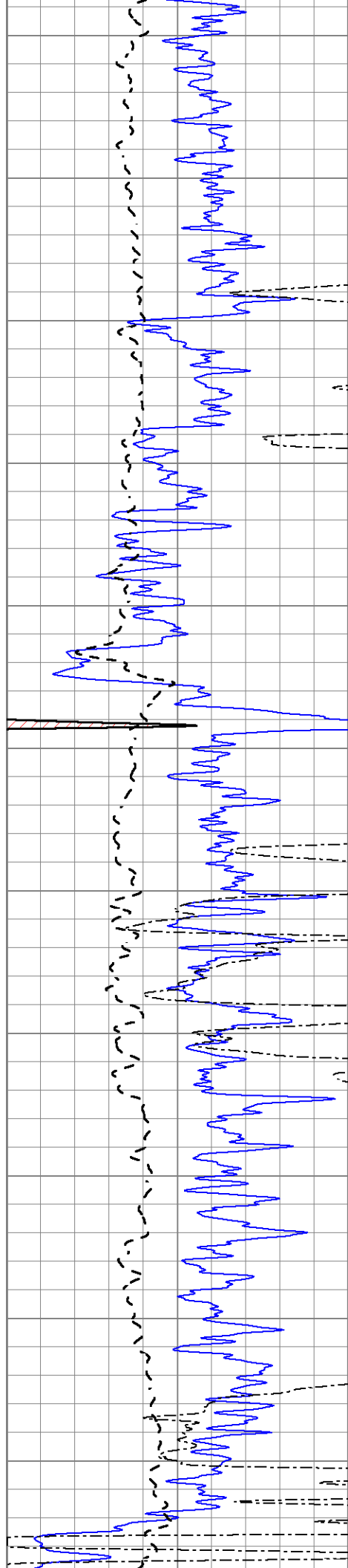
Database File 5932pe.db
 Dataset Pathname pass3.1M
 Presentation Format dil2
 Dataset Creation Wed Jan 05 17:14:32 2022
 Charted by Depth in Feet scaled 1:600

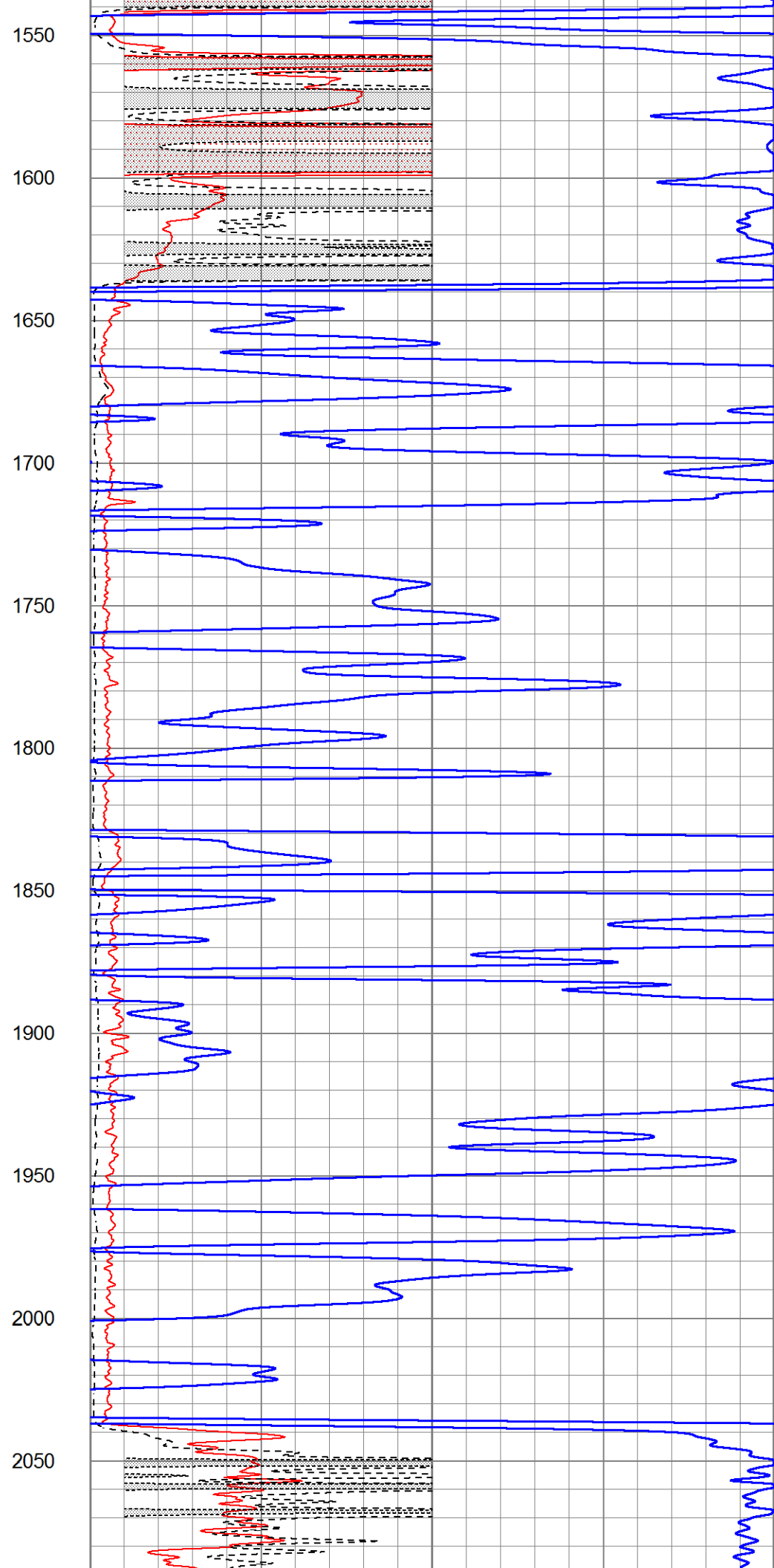
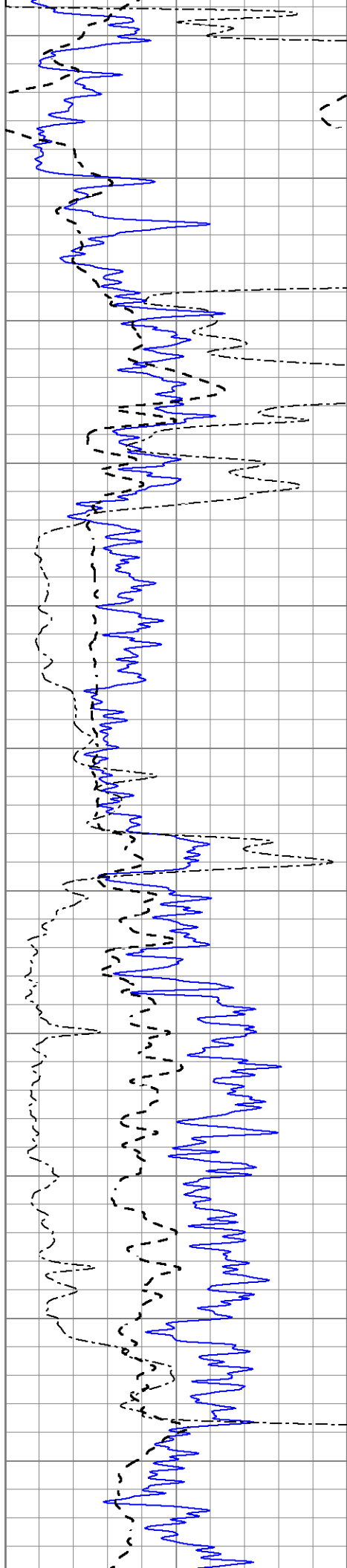
0	Gamma Ray (GAPI)	150
-100	SP (mV)	100
0	RWA (Ohm-m)	1

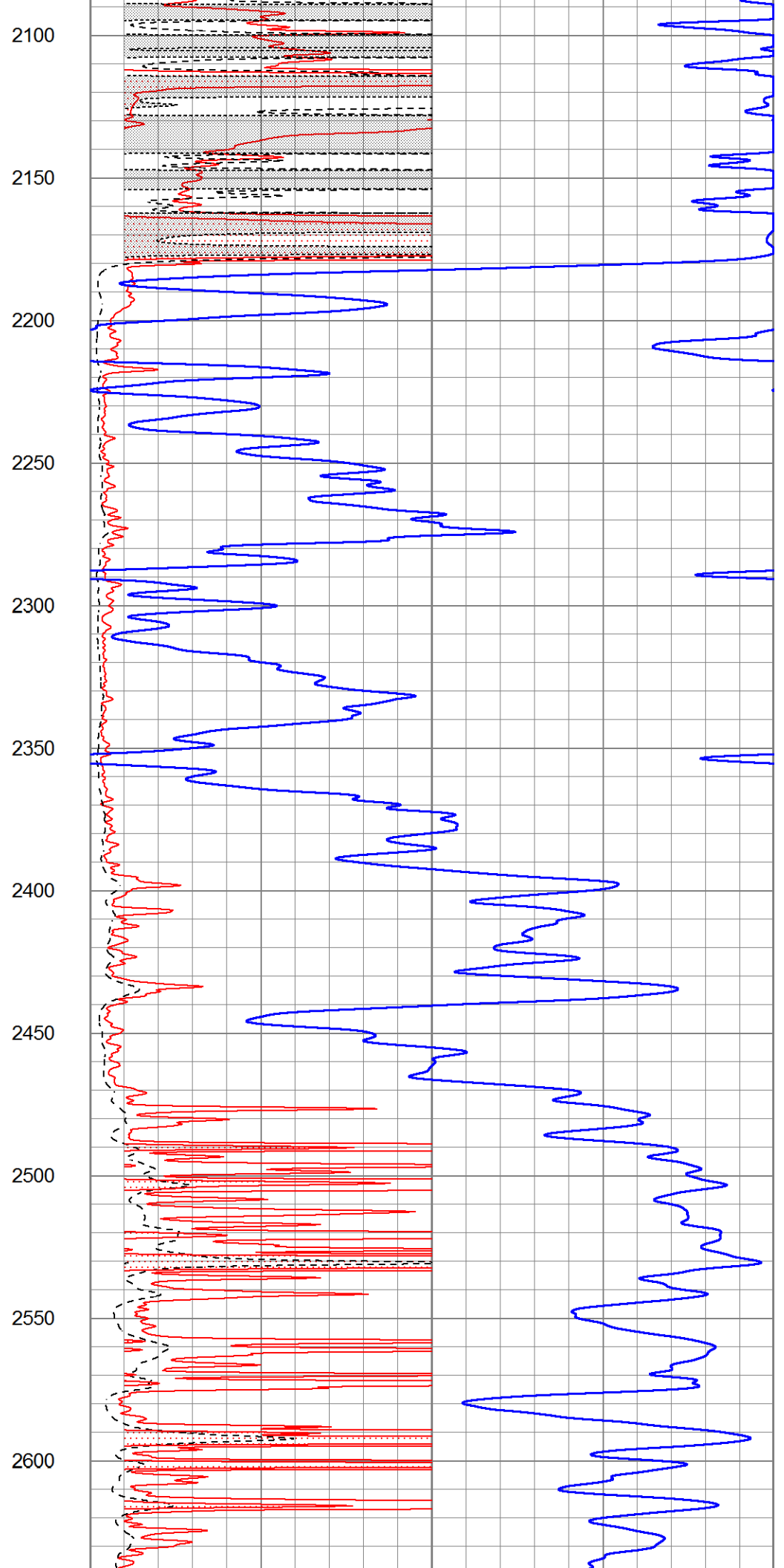
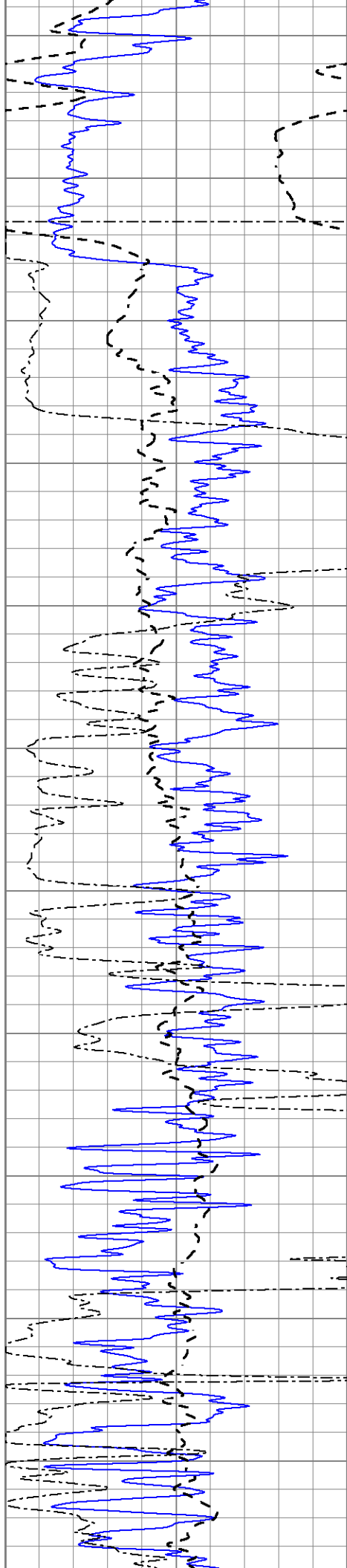
1000	CILD (mmho/m)	0
0	RLL3 (Ohm-m)	50
0	RILD (Ohm-m)	50
50	RILD X10 (Ohm-m)	500
50	RLL3 X10 (Ohm-m)	500

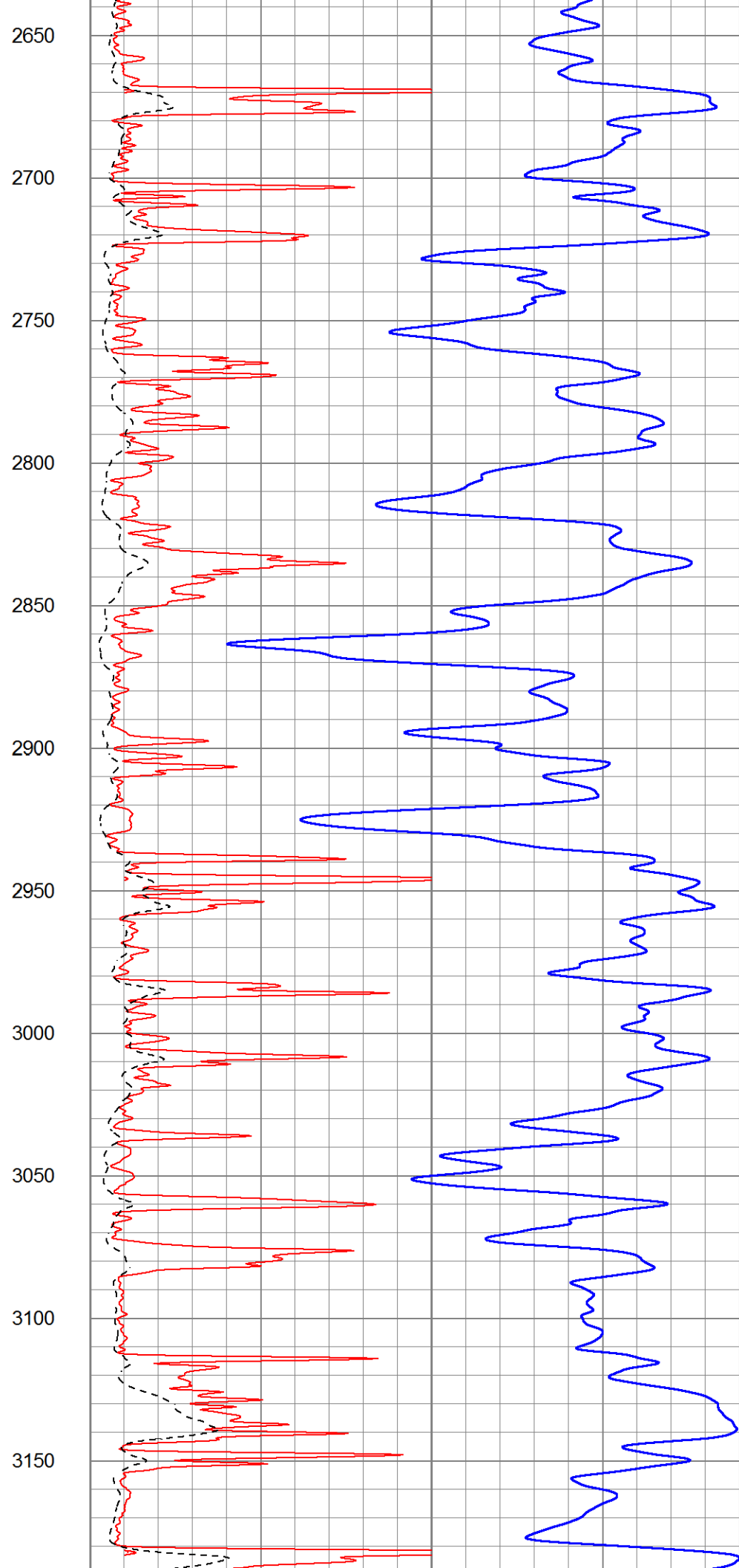
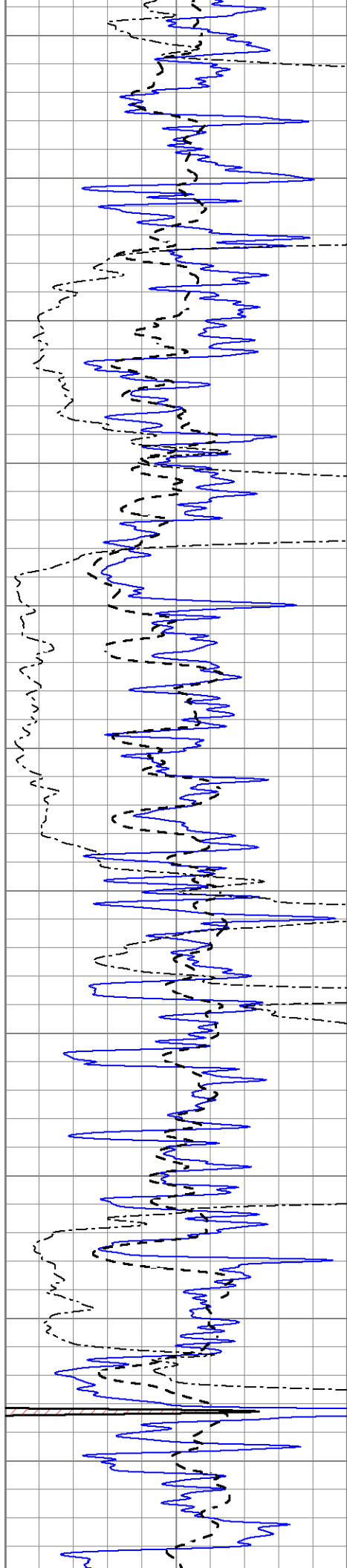


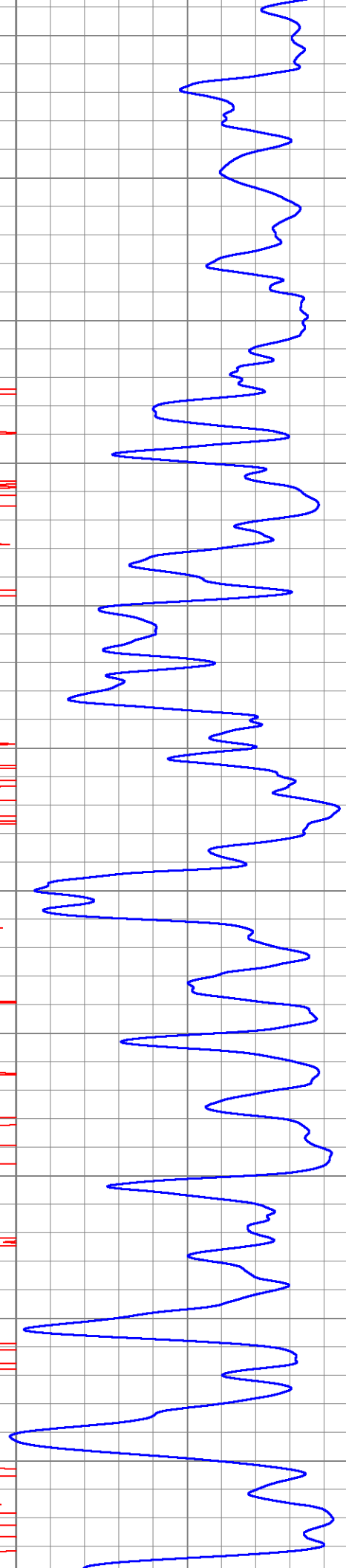
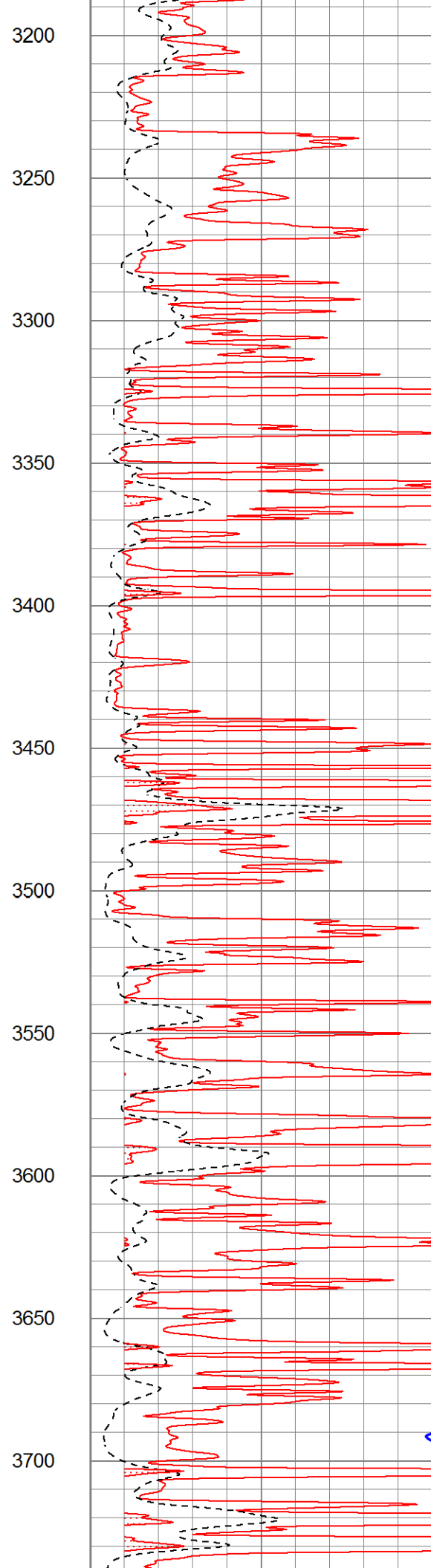
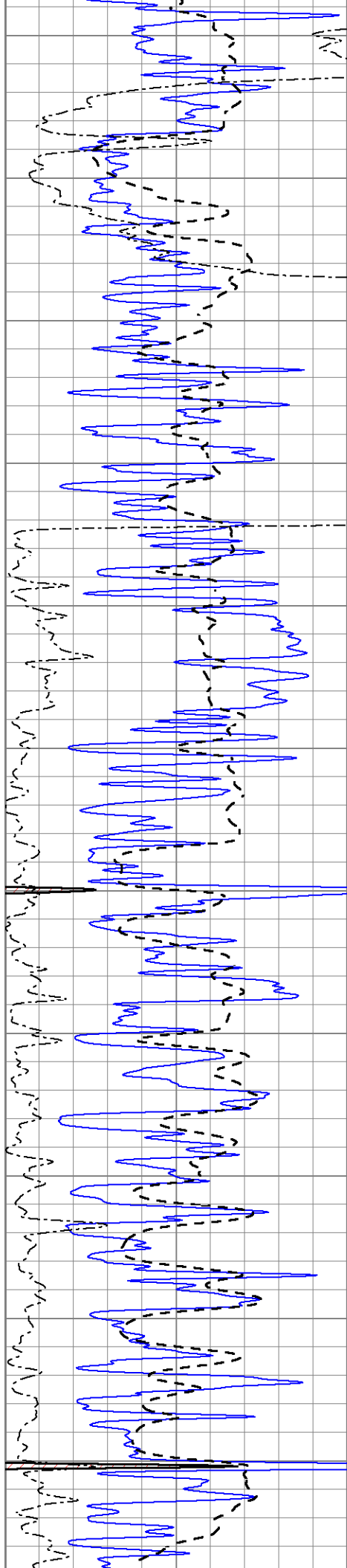


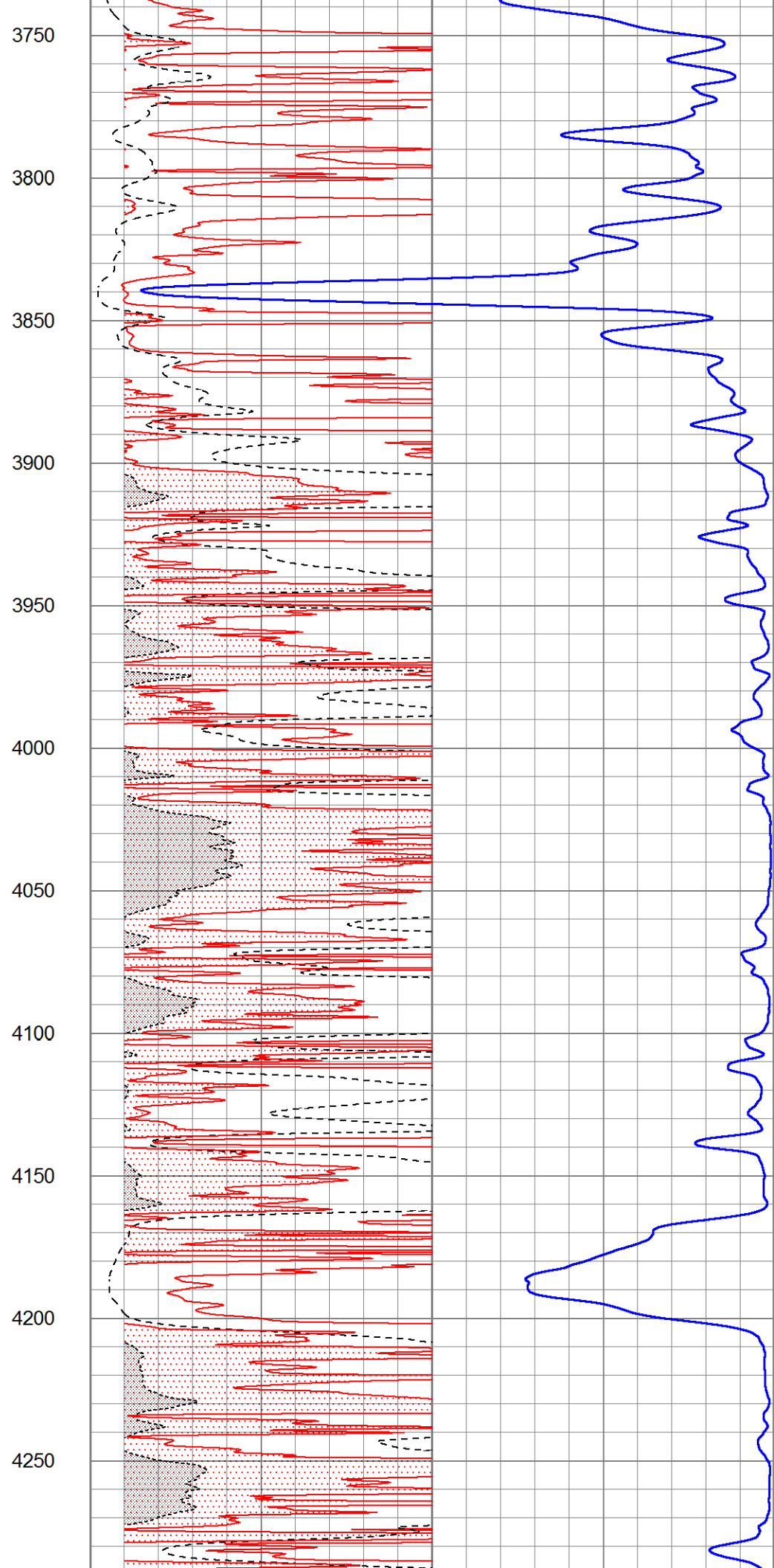
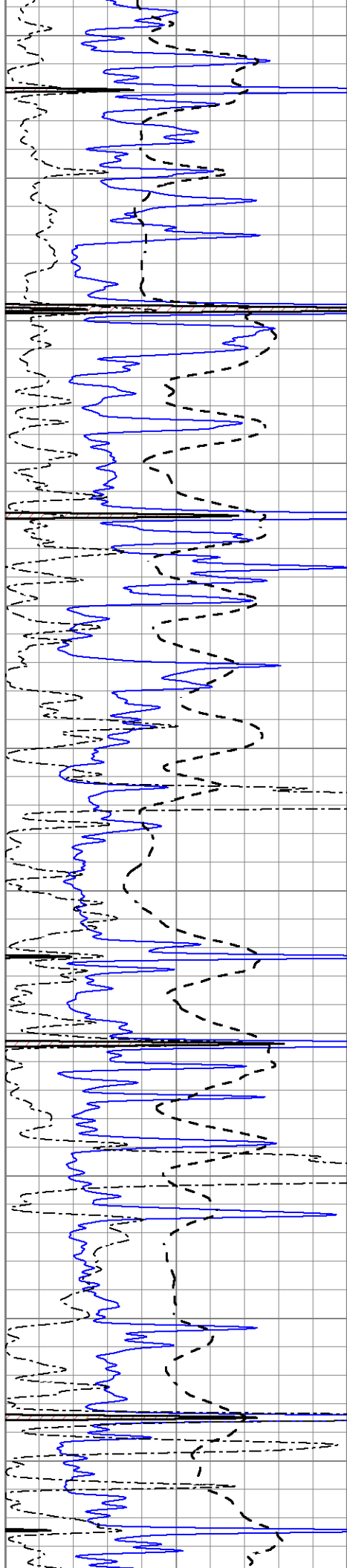


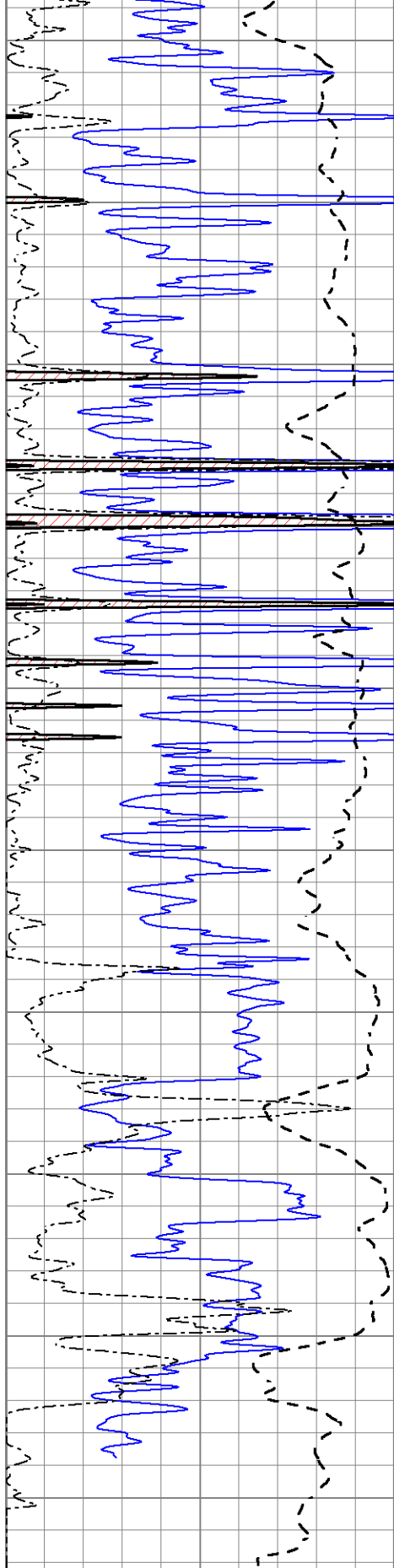




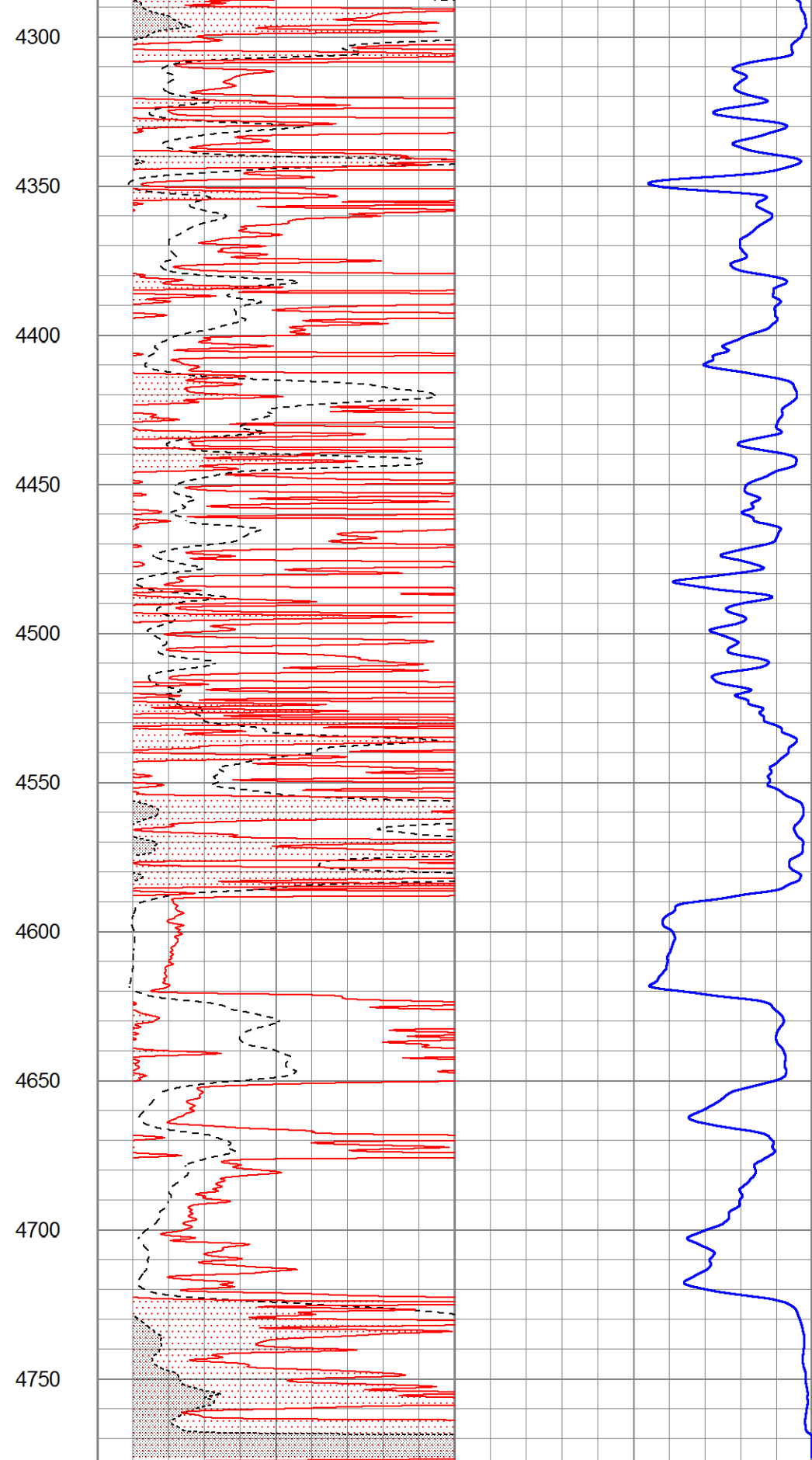








0	Gamma Ray (GAPI)	150
-100	SP (mV)	100
0	RWA (Ohm-m)	1



1000	CILD (mmho/m)	0
0	RLL3 (Ohm-m)	50
0	RILD (Ohm-m)	50

50	RILD X10 (Ohm-m)	500
50	RLL3 X10 (Ohm-m)	500

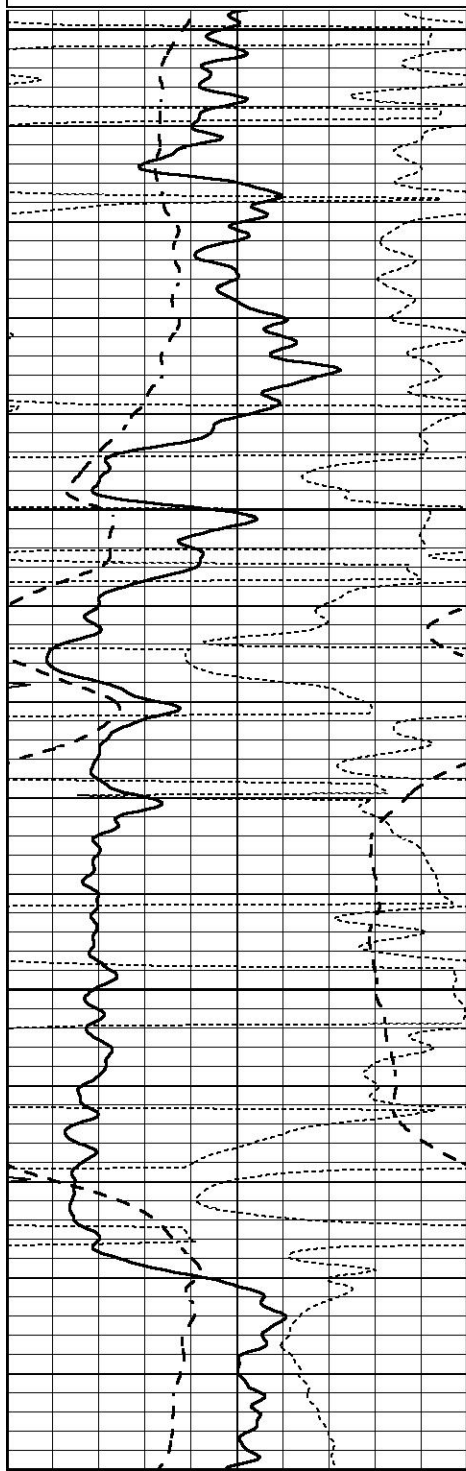


ANHYDRITE

Database File 5932pe.db
Dataset Pathname pass3.1A
Presentation Format _dil
Dataset Creation Wed Jan 05 17:15:28 2022
Charted by Depth in Feet scaled 1:240

0	GAMMA RAY (GAPI)	150
-100	SP (mV)	100
-250	Rxo/Rt	50
0	MINMK	20

0.2	SHALLOW GUARD (Ohm-m)	2000
0.2	DEEP INDUCTION (Ohm-m)	2000
0.2	MEDIUM INDUCTION (Ohm-m)	2000

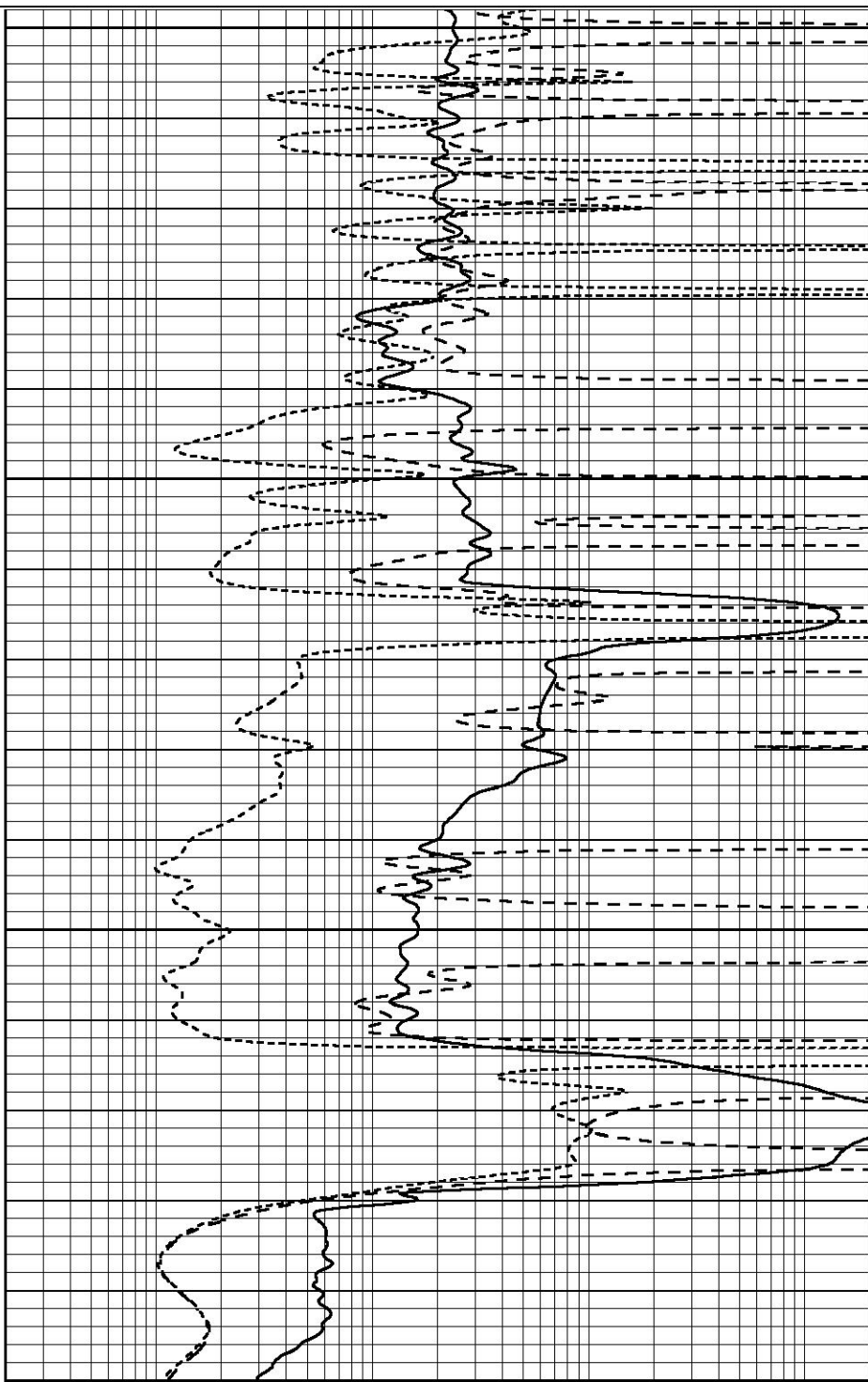


2050

2100

2150

2200



0	GAMMA RAY (GAPI)	150
-100	SP (mV)	100
-250	Rxo/Rt	50
0	MINMK	20

2200

0.2	SHALLOW GUARD (Ohm-m)	2000
0.2	DEEP INDUCTION (Ohm-m)	2000
0.2	MEDIUM INDUCTION (Ohm-m)	2000

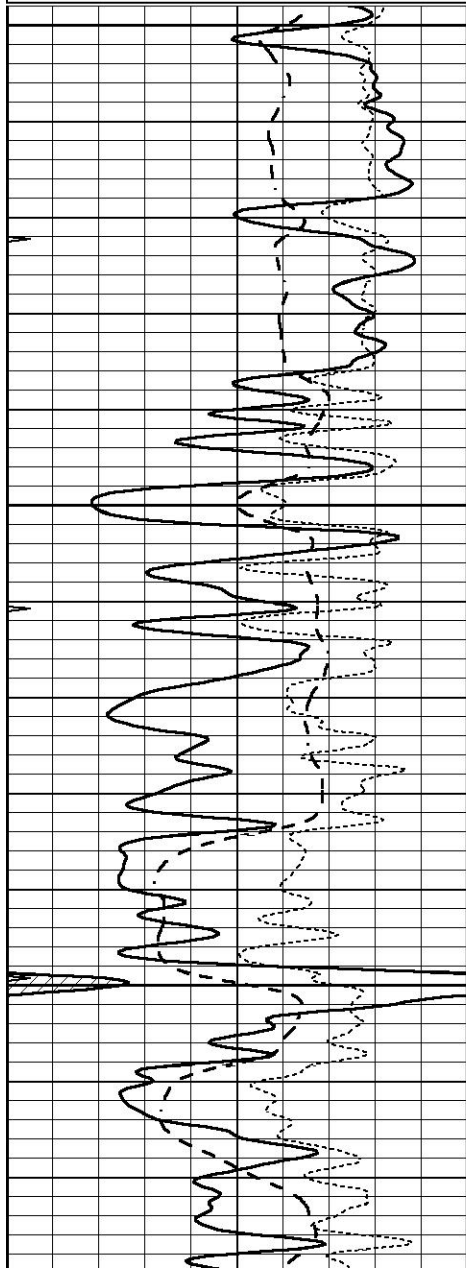


MAIN SECTION

Database File 5932pe.db
 Dataset Pathname pass3.1M
 Presentation Format _dil
 Dataset Creation Wed Jan 05 17:14:32 2022
 Charted by Depth in Feet scaled 1:240

0	GAMMA RAY (GAPI)	150
-100	SP (mV)	100
-250	Rxo/Rt	50
0	MINMK	20

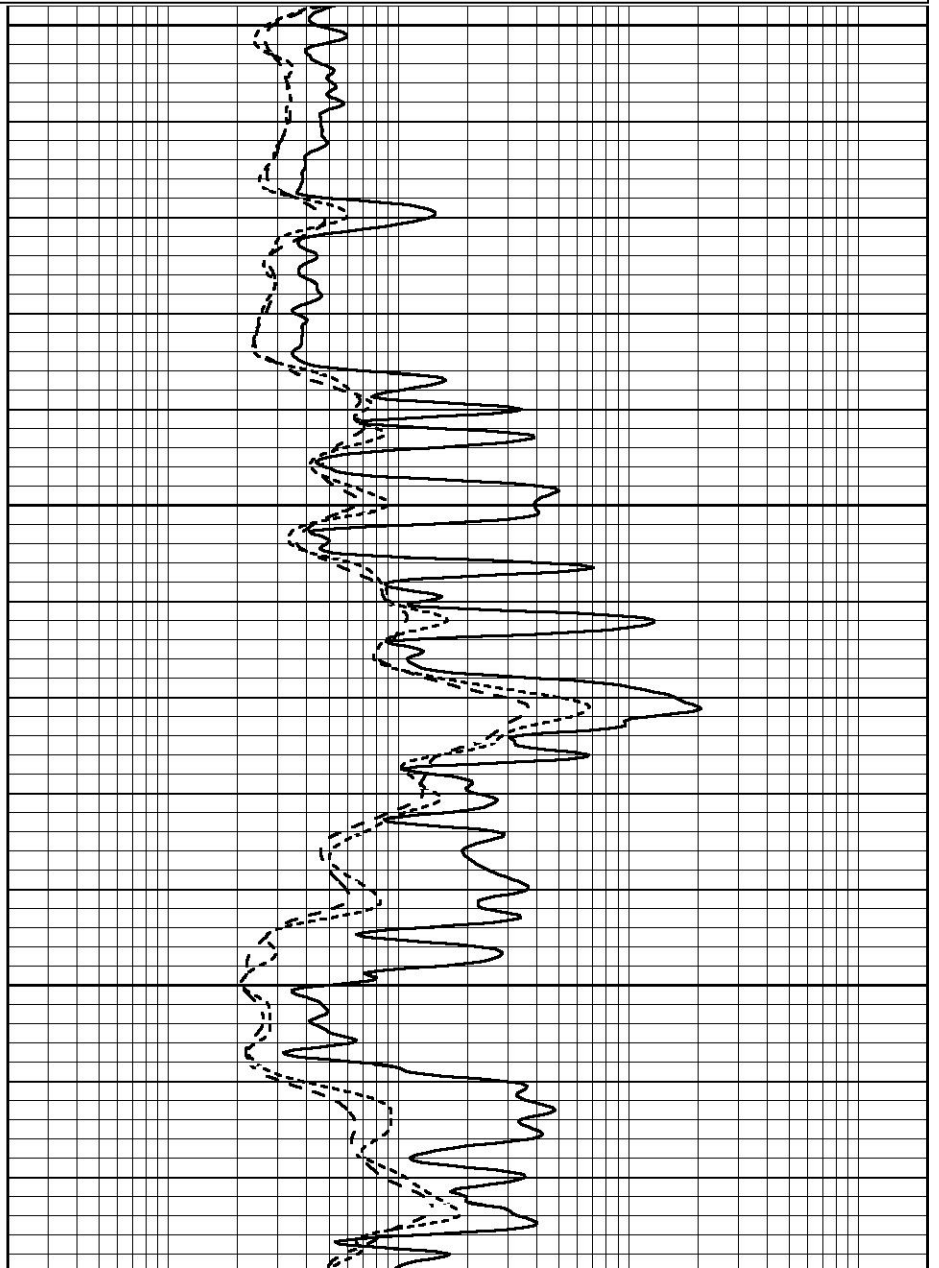
0.2	SHALLOW GUARD (Ohm-m)	2000
0.2	DEEP INDUCTION (Ohm-m)	2000
0.2	MEDIUM INDUCTION (Ohm-m)	2000

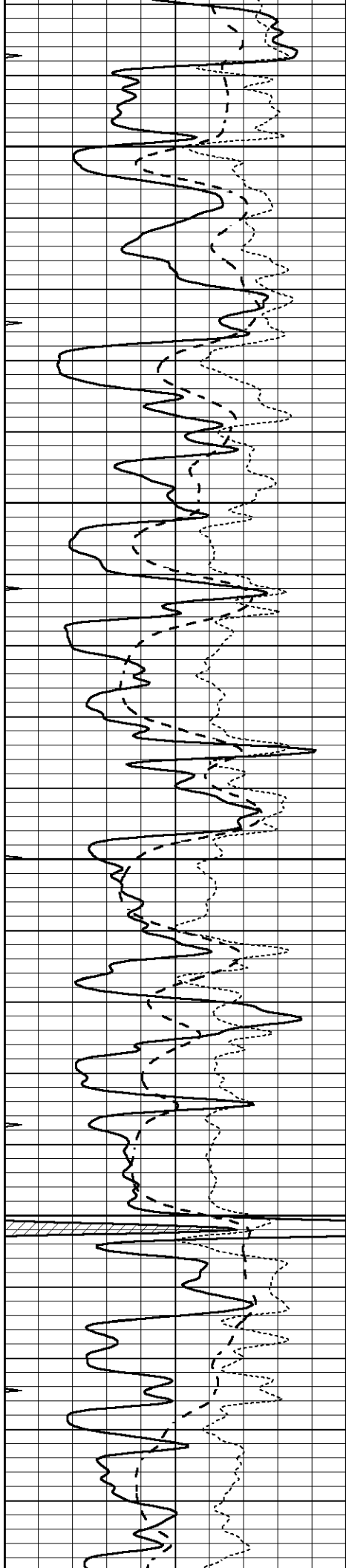


3400

3450

3500





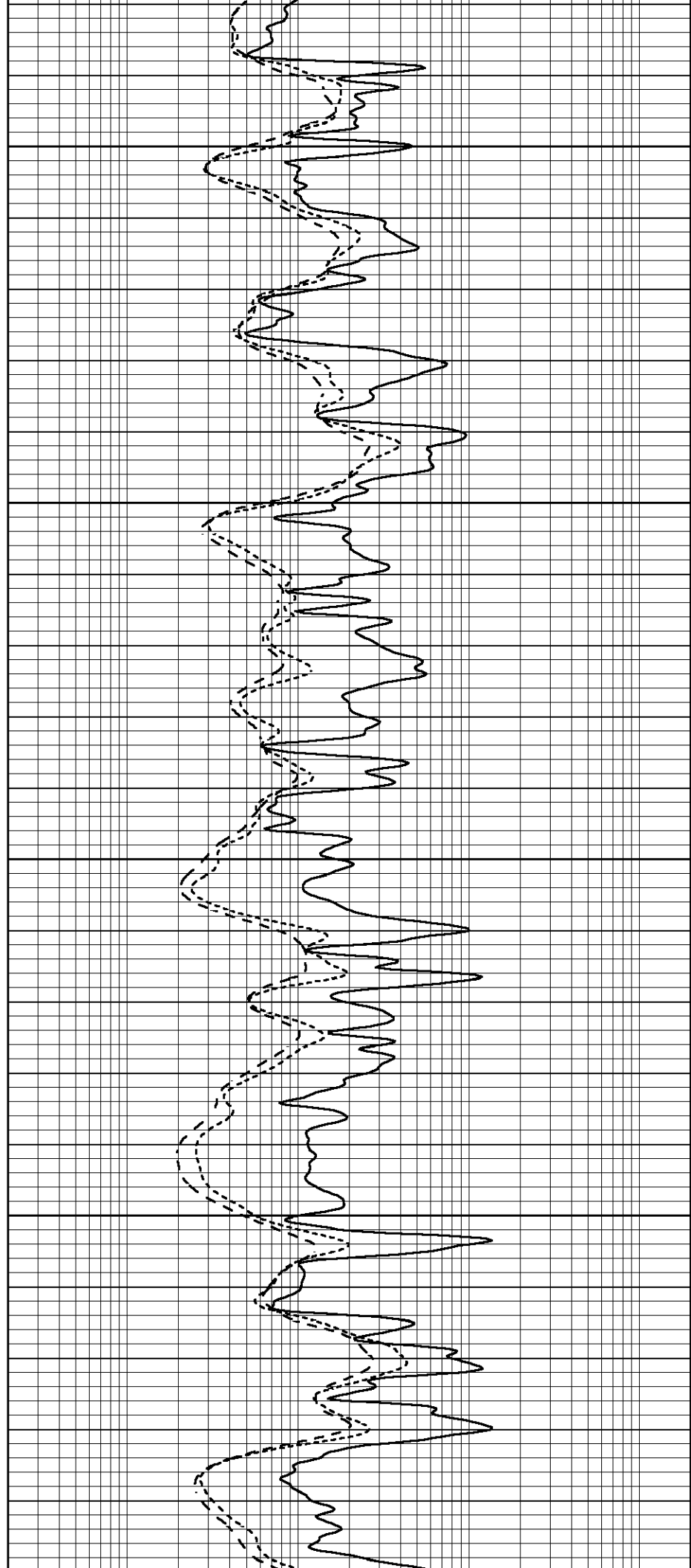
3550

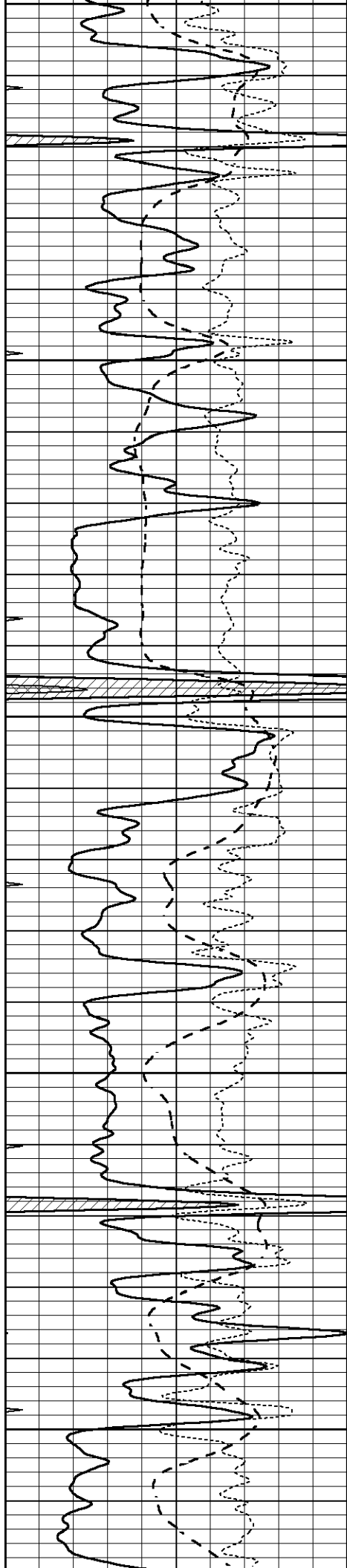
3600

3650

3700

3750





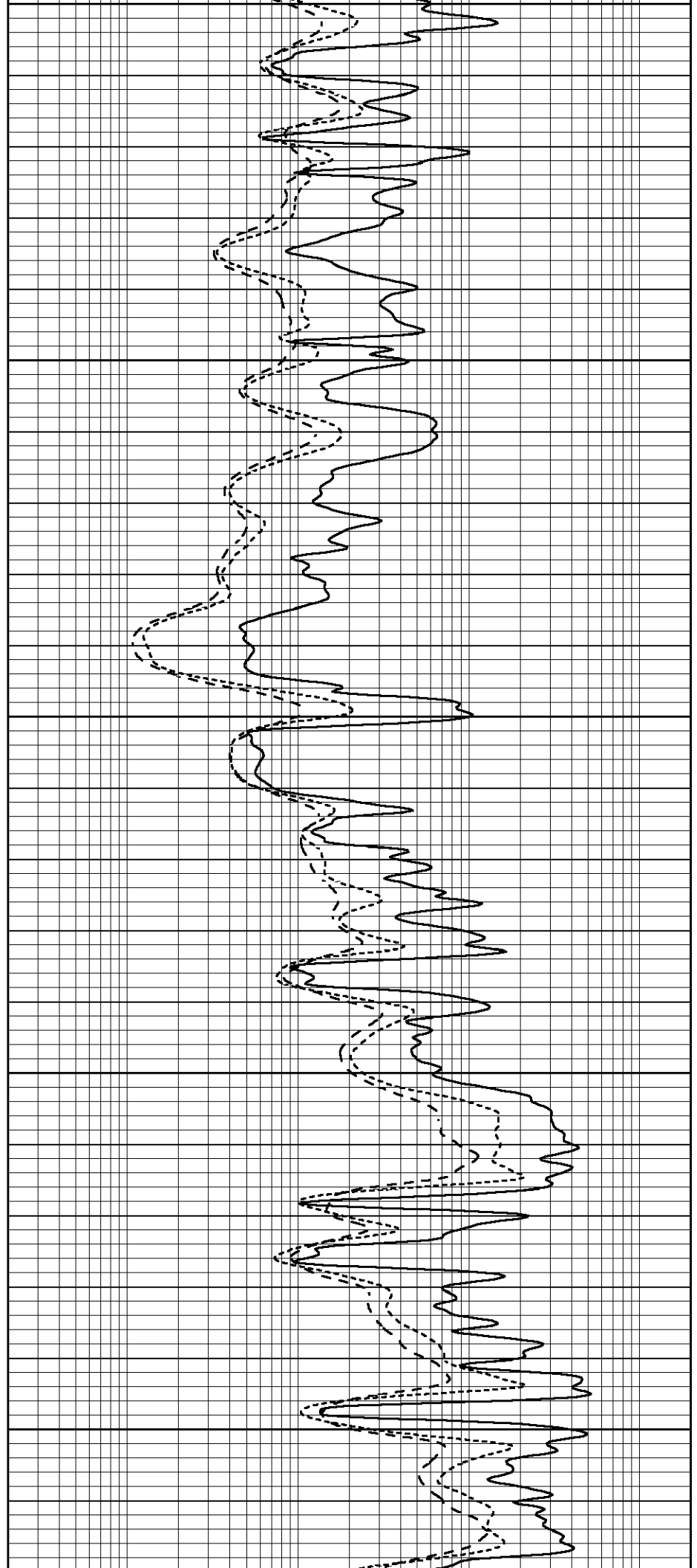
3750

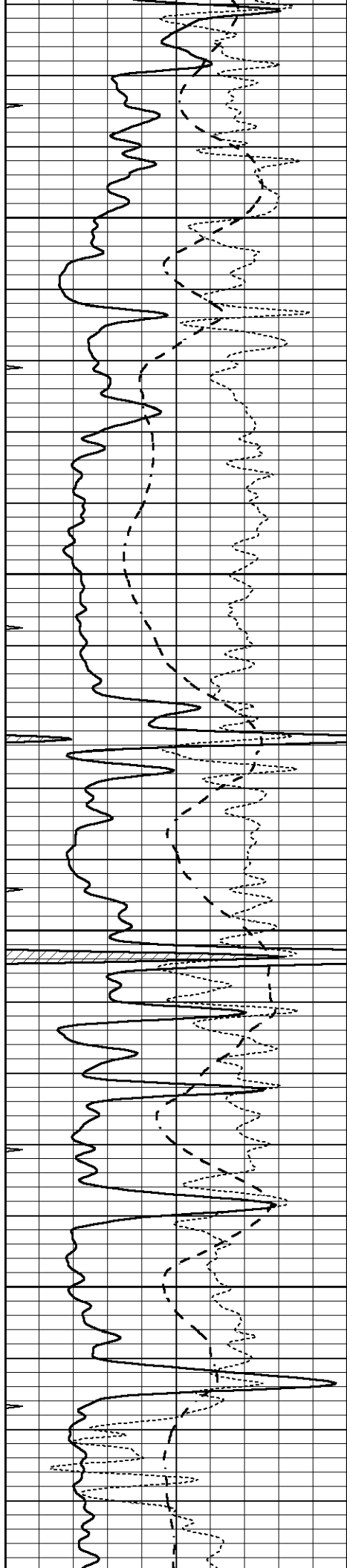
3800

3850

3900

3950



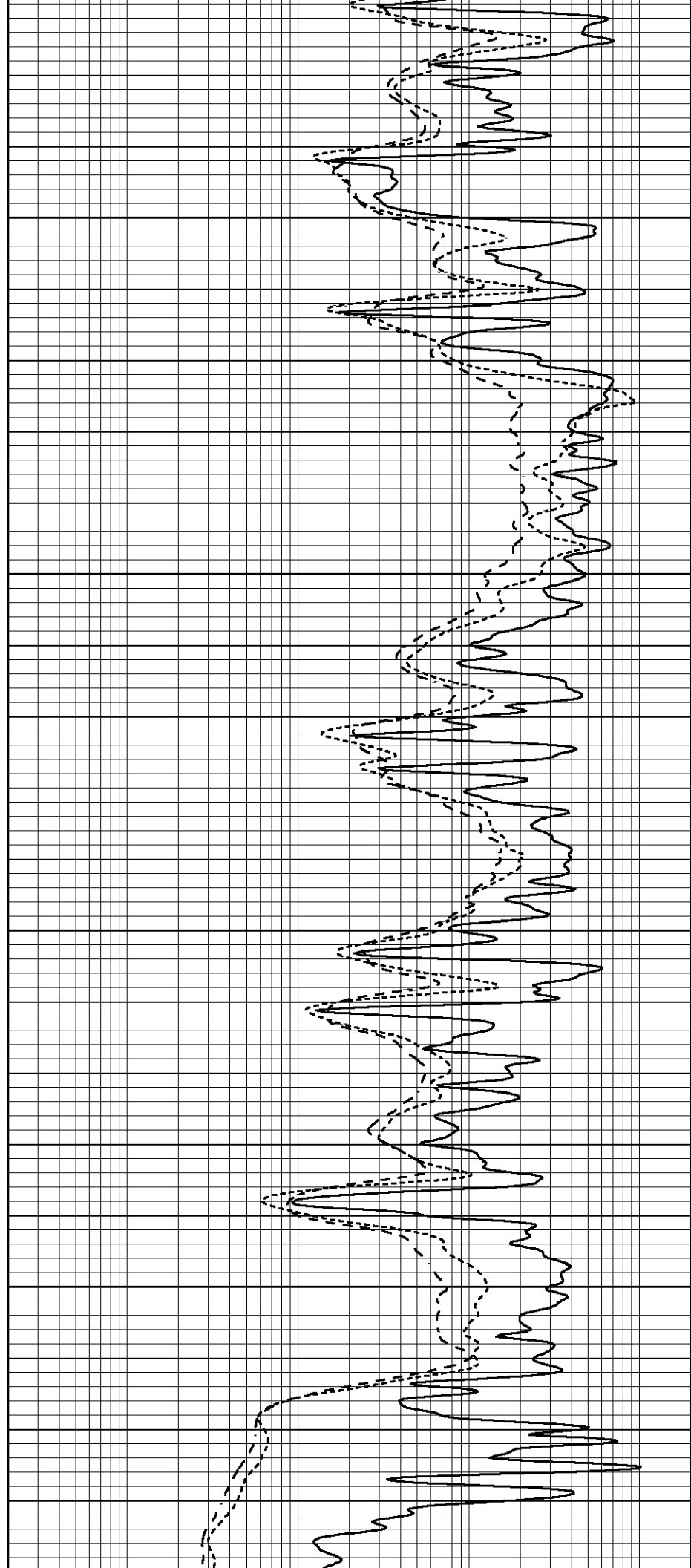


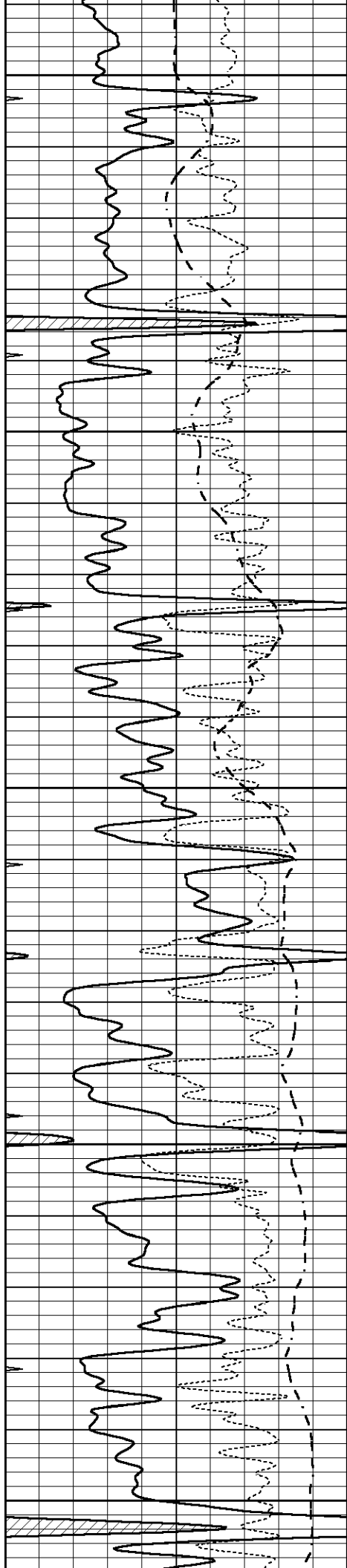
4000

4050

4100

4150





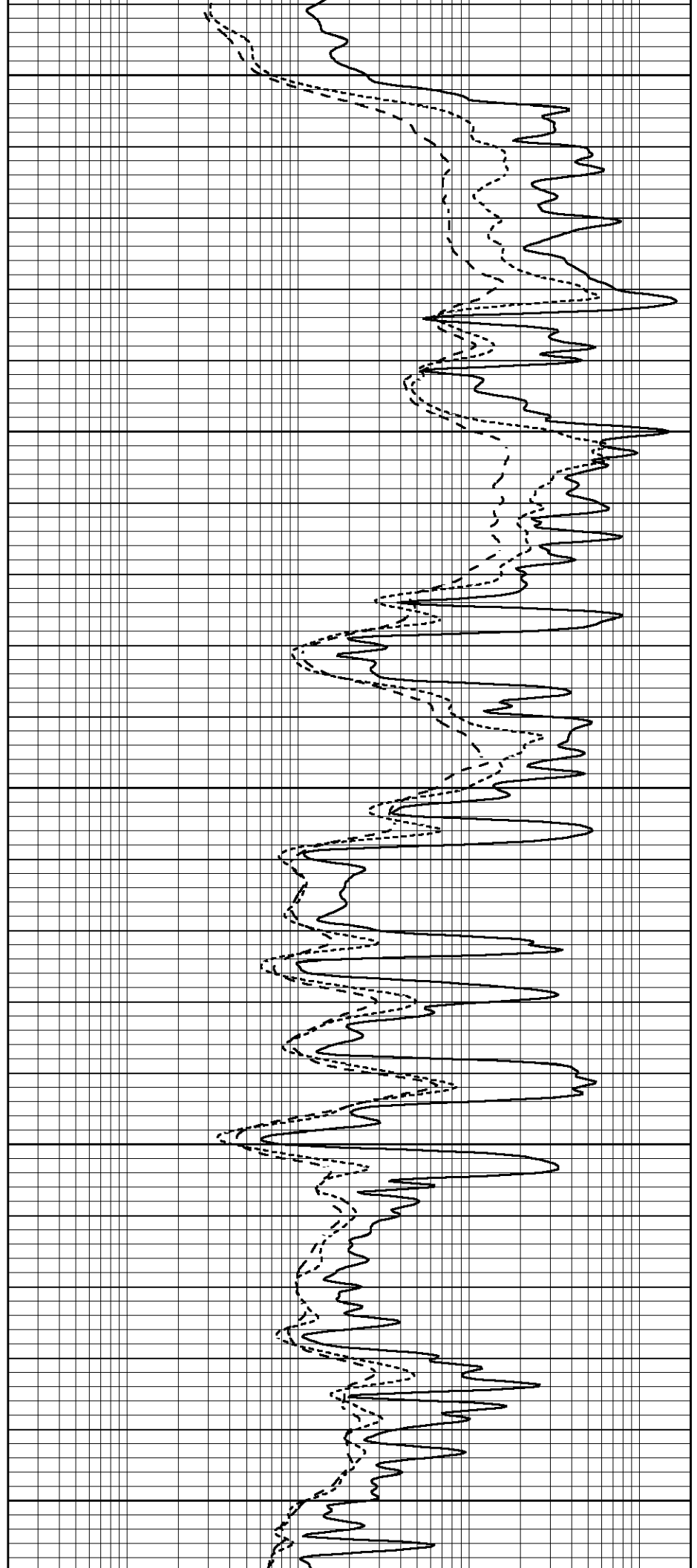
4200

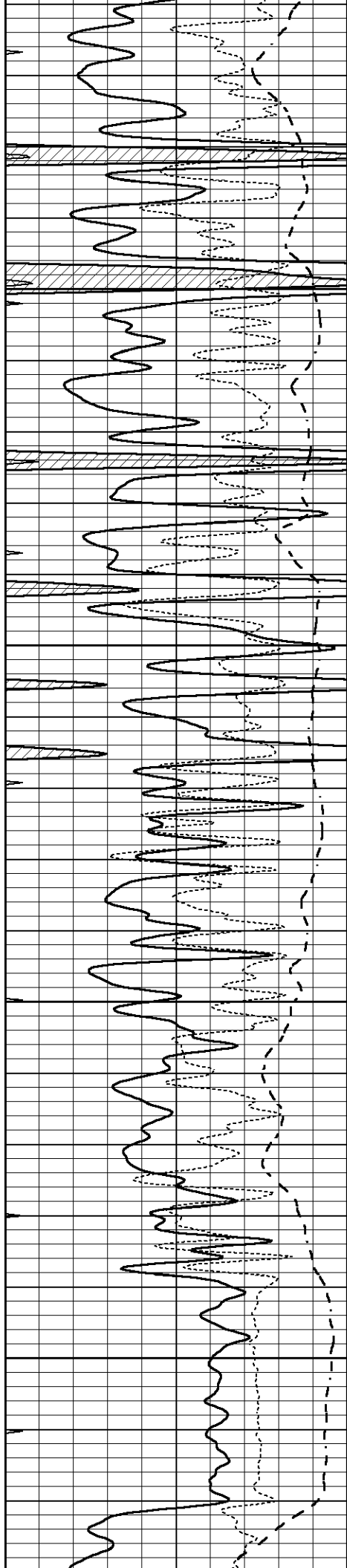
4250

4300

4350

4400



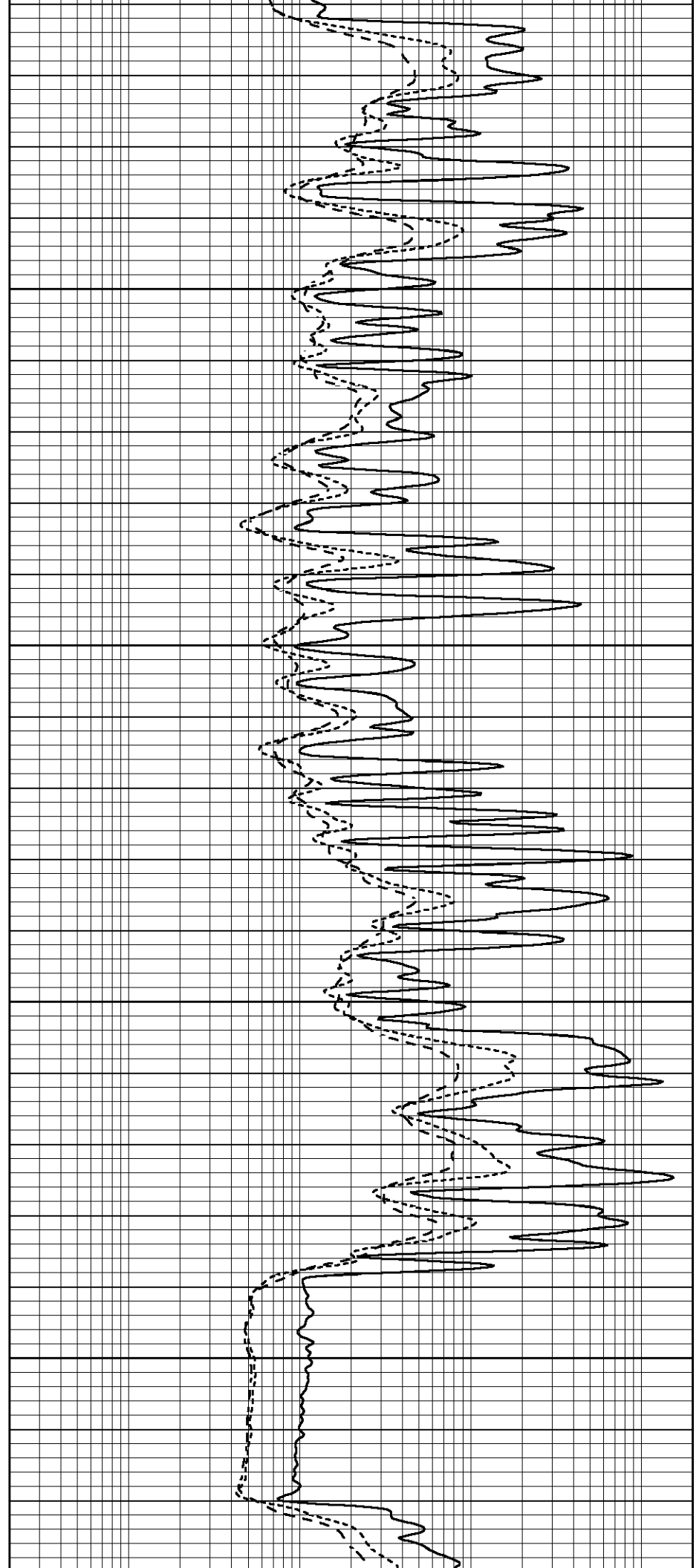


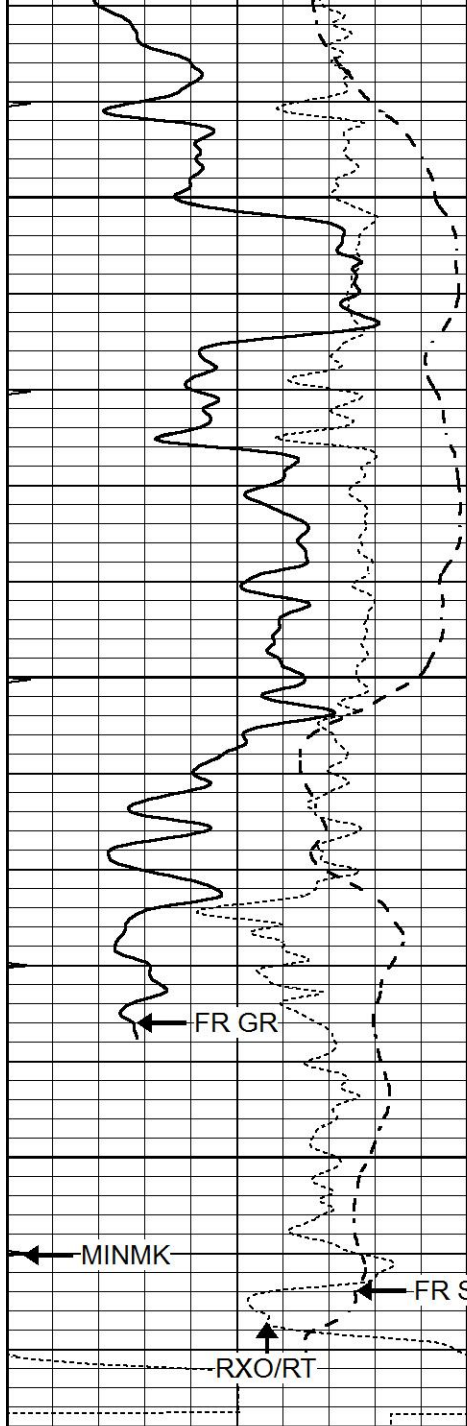
4450

4500

4550

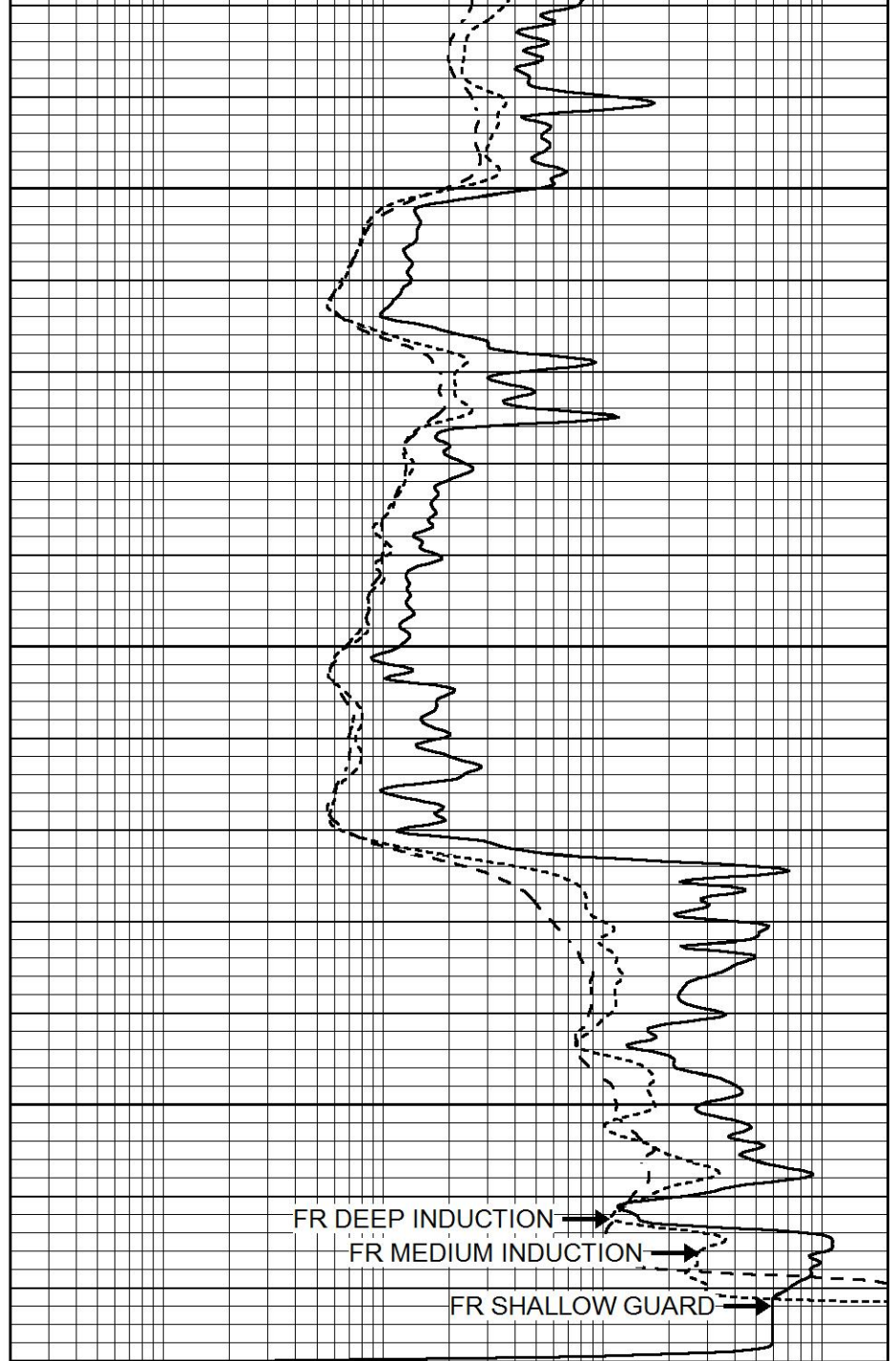
4600





4650
4700
4750
LTD 4774

0	GAMMA RAY (GAPI)	150
-100	SP (mV)	100
-250	Rxo/Rt	50
0	MINMK	20



0.2	SHALLOW GUARD (Ohm-m)	2000
0.2	DEEP INDUCTION (Ohm-m)	2000
0.2	MEDIUM INDUCTION (Ohm-m)	2000



REPEAT SECTION

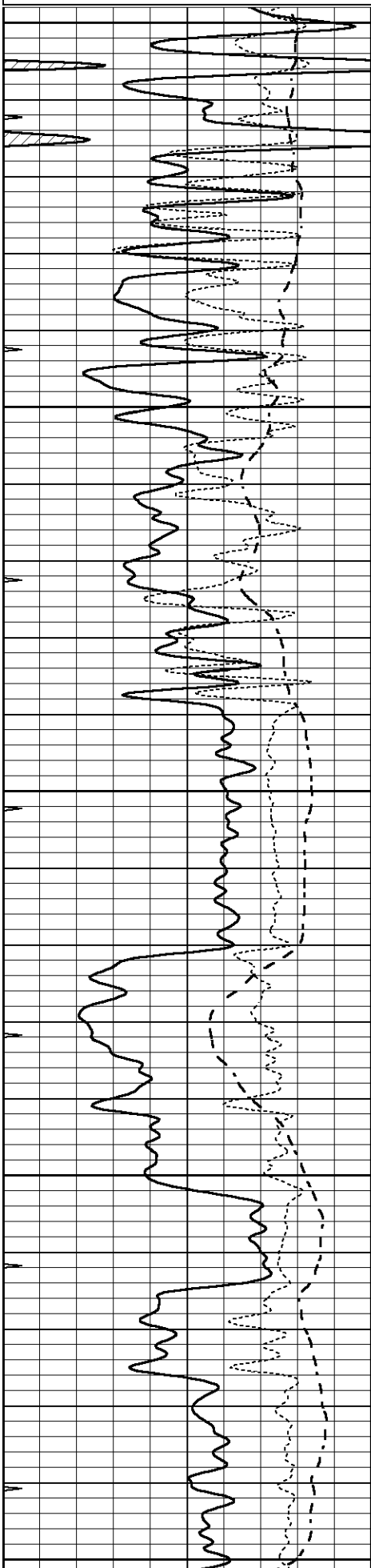
Database File 5932pe.db
 Dataset Pathname pass2.1R
 Presentation Format _dil
 Dataset Creation Wed Jan 05 17:17:16 2022
 Charted by Depth in Feet scaled 1:240

0	GAMMA RAY (GAPI)	150
---	------------------	-----

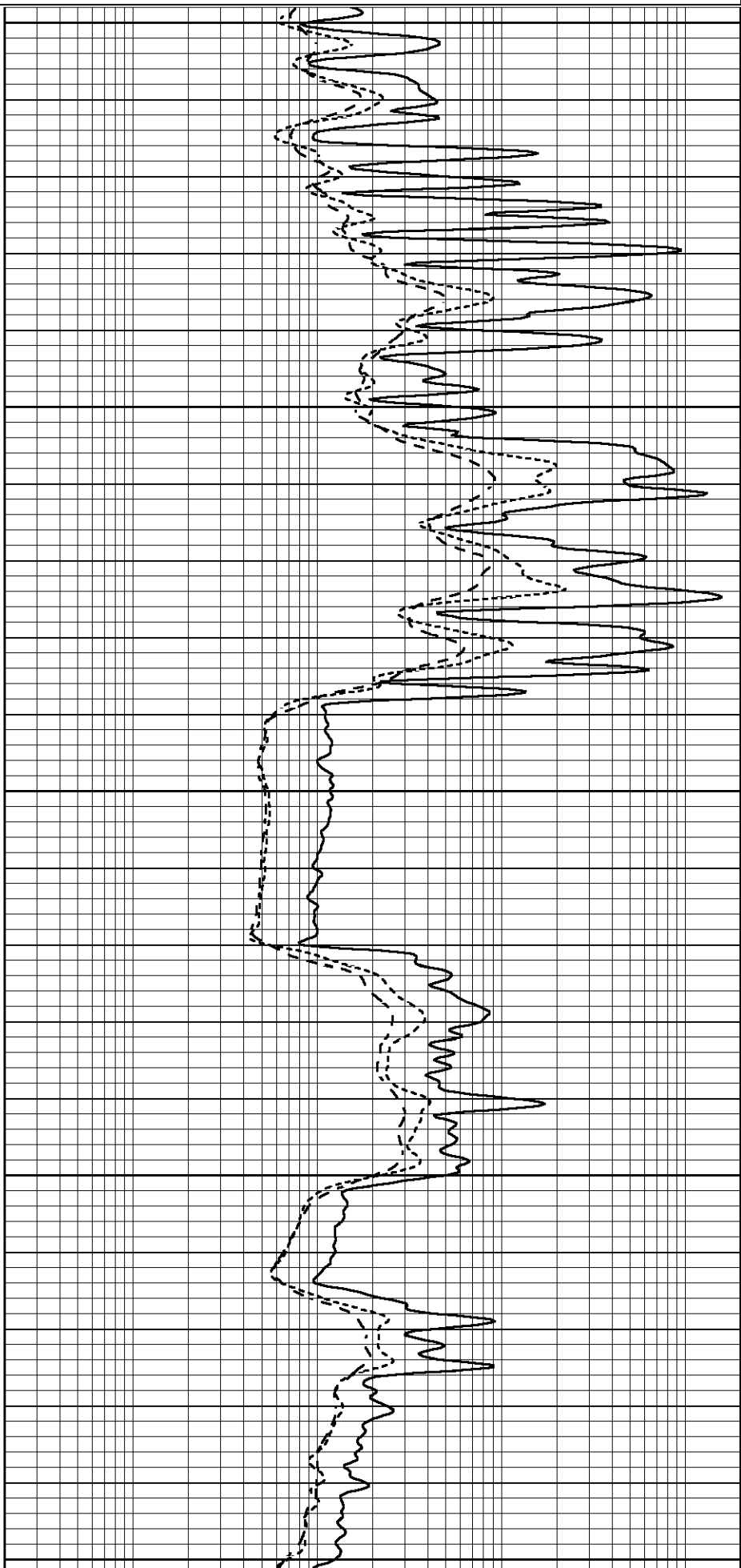
0.2	SHALLOW GUARD (Ohm-m)	2000
-----	-----------------------	------

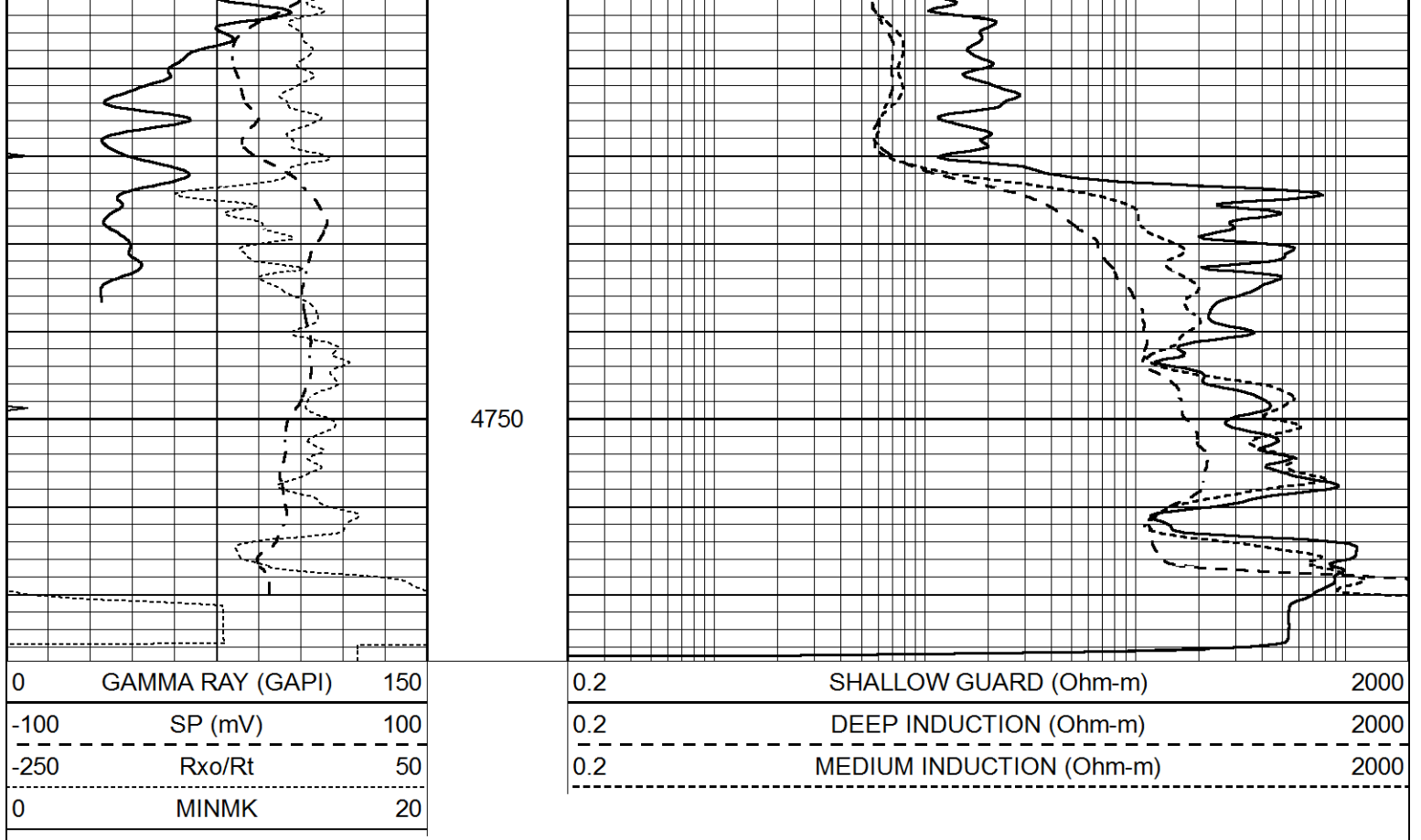
-100	SP (mV)	100
-250	Rxo/Rt	50
0	MINMK	20

0.2	DEEP INDUCTION (Ohm-m)	2000
0.2	MEDIUM INDUCTION (Ohm-m)	2000



4500
4550
4600
4650
4700





Calibration Report

Database File 5932pe.db
 Dataset Pathname pass3.1M
 Dataset Creation Wed Jan 05 17:14:32 2022

Dual Induction Calibration Report

Serial-Model: DIL4-GEAR
 Surface Cal Performed: Wed Jan 05 15:53:20 2022
 Downhole Cal Performed: Tue Sep 25 17:01:29 2001
 After Survey Verification Performed: Sat Jun 11 16:07:12 2005

Surface Calibration

Loop:	Readings				References			Results	
	Air	Loop			Air	Loop		m	b
Deep	0.008	0.666	V	0.000	400.000	mmho/m	580.000	0.000	
Medium	-0.003	0.769	V	0.000	462.500	mmho/m	560.000	-3.000	
Internal:	Zero	Cal		Zero	Cal		m	b	
Deep	0.013	0.651	V	0.000	400.000	mmho/m	627.541	-8.365	
Medium	0.020	0.754	V	0.000	462.500	mmho/m	630.311	-12.549	

Downhole Calibration

Internal:	Readings				References			Results	
	Zero	Cal			Zero	Cal		m	b
Deep	0.000	1.000	mmho/m	0.000	1.000	mmho/m	1.000	0.000	
Medium	0.000	1.000	mmho/m	0.000	1.000	mmho/m	1.000	0.000	
Shallow	2.525	0.026	V	500.000	2.000	Ohm-m	250.000	-3.000	

After Survey Verification

After Survey Verification

Internal:	Readings			Targets			Results	
	Zero	Cal		Zero	Cal		m'	b'
Deep	0.000	1.000	mmho/m	0.000	1.000	mmho/m	1.000	0.000
Medium	0.000	1.000	mmho/m	0.000	1.000	mmho/m	1.000	0.000
Shallow	0.000	0.000	Ohm-m	500.000	2.000	Ohm-m	1.000	0.000

Litho Density Calibration Report
Serial: 003 Model: PRB

Master Calibration

Performed Fri Mar 05 10:51:07 2021

	Background	Magnesium	Aluminum	Aluminum+Fe	
Window 1	1570.6	10682.1	3457.0	3096.9	cps
Window 2	1451.7	9432.7	3101.4	2816.5	cps
Window 3	1334.0	7160.6	2532.0	2369.3	cps
Window 4	370.4	373.1	366.4	370.9	cps
Long Space	0.0	7981.0	1649.7	1364.8	cps
Short Space	2.8	3522.0	2211.0	1823.6	cps
Rho		1.7100	2.5900	0.0000	g/cc
Pe		2.0000	2.7500	5.7900	
Rib Angle	: 43.5	Rib Slope	: 0.951	Density/Spine Ratio	: 0.535
Spine Angle	: 73.5	Spine Slope	: 3.386	Spine Intercept	: -18.7

Before Survey Verification

Performed Wed Dec 31 18:00:00 1969

Window 1	0.0	0.0	0.0	0.0	cps
Window 2	0.0	0.0	0.0	0.0	cps
Window 3	0.0	0.0	0.0	0.0	cps
Window 4	0.0	0.0	0.0	0.0	cps
Long Space	0.0	0.0	0.0	0.0	cps
Short Space	0.0	0.0	0.0	0.0	cps
Measured Rho		0.0000	0.0000	0.0000	g/cc
Measured Correction		0.0000	0.0000	0.0000	g/cc
Measured Pe			0.0000	0.0000	

After Survey Verification

Performed Wed Dec 31 18:00:00 1969

Window 1	0.0	0.0	0.0	0.0	cps
Window 2	0.0	0.0	0.0	0.0	cps
Window 3	0.0	0.0	0.0	0.0	cps
Window 4	0.0	0.0	0.0	0.0	cps
Long Space	0.0	0.0	0.0	0.0	cps
Short Space	0.0	0.0	0.0	0.0	cps
Measured Rho		0.0000	0.0000	0.0000	g/cc
Measured Correction		0.0000	0.0000	0.0000	g/cc
Measured Pe			0.0000	0.0000	

Compensated Neutron Calibration Report

Serial Number: 070808PMC
Tool Model: NABORS

PRE-SURVEY VERIFICATION

Detector	Readings	Measured	Target
----------	----------	----------	--------

Short Space
Long Space

cps
cps

pu

pu

POST-SURVEY VERIFICATION

Detector

Readings

Measured

Target

Short Space
Long Space

cps
cps

pu

pu

Gamma Ray Calibration Report

Serial Number: 070558
Tool Model: OPEN_GR
Performed: Wed Jan 05 15:49:21 2022

Calibrator Value: 1.0 GAPI

Background Reading: 0.0 cps
Calibrator Reading: 1.0 cps

Sensitivity: 0.3000 GAPI/cps