



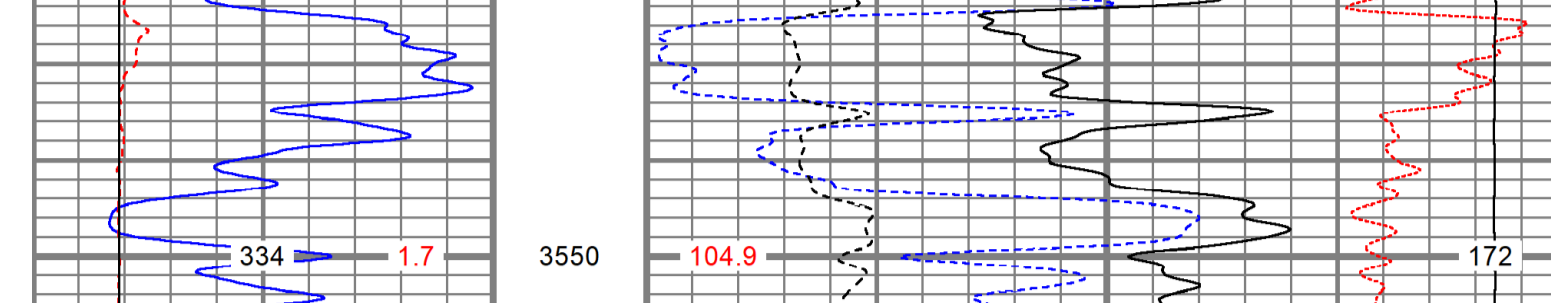
LITHO DENSITY NEUTRON LOG

Company	PALOMINO PETROLEUM	Well	MISHLER-MASLO UNIT #1
Field	STUTZ EAST	County	NESS
Location	2291 FNL & 219 FNL	State	KS
APR #	15 26319	Other Services	ML
SEC	10	TWP	7S
Range	RGE 25W	Emission	K 2473
Ground Level	2473	Ground Level	2473
Log Measured From	KB 8' AGL	Log Measured From	KB 8' AGL
Date	11/4/22	Date	11/4/22
Run Number	016	Run Number	016
Depth	4549	Depth	4549
Bottom Logged Interval	3500'	Bottom Logged Interval	3500'
Top Log Interval	8 5/8" @ 214'	Top Log Interval	8 5/8" @ 214'
Casing Logger	214	Casing Logger	214
Truse Built in Hole	Chemical	Truse Built in Hole	Chemical
Density / Accuracy	9.585	Density / Accuracy	9.585
psi / Fluid Loss	11.07 / 2	psi / Fluid Loss	11.07 / 2
Run @ Mass Temp	1.1 @ 60degF	Run @ Mass Temp	1.1 @ 60degF
Run @ Mass Temp	1.33 @ 60degF	Run @ Mass Temp	1.33 @ 60degF
Source of Run / Time	Calculated	Source of Run / Time	Calculated
Time (Circulator Stopped)	6:10:10 AM	Time (Circulator Stopped)	6:10:10 AM
Time (Circulator Started)	11:00:00 AM	Time (Circulator Started)	11:00:00 AM
Time (Circulator Stopped)	11:00:00 AM	Time (Circulator Stopped)	11:00:00 AM
Time (Circulator Started)	11:00:00 AM	Time (Circulator Started)	11:00:00 AM
Equipment Number	1605	Equipment Number	1605
Location	HAYS, KS	Location	HAYS, KS
Witnessed By	GUS PFANZENTEL	Witnessed By	GUS PFANZENTEL
Recorded By	KEATON JONES	Recorded By	KEATON JONES

All interpretations are opinions based on inferences from electrical or other measurements and we cannot and do not guarantee the accuracy or correctness of any interpretation, and we shall not, except in the case of gross or willful negligence on our part, be liable or responsible for any loss, costs, damages, or expenses incurred or sustained by anyone resulting from any interpretation made by any of our officers, agents or employees. These interpretations are also subject to our general terms and conditions set out in our current Price Schedule.

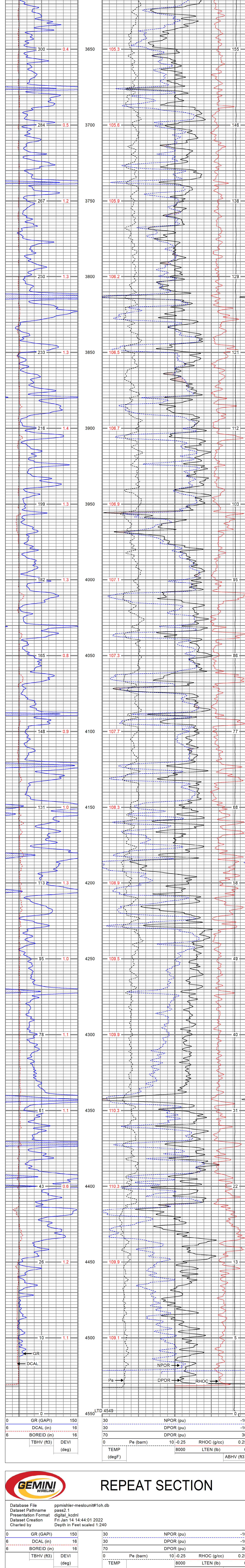
Comments

WEST OF ARNOLD TO J RD. SOUTH TO 220,1 EAST NORTH INTO.
Thank You for using Gemini Wireline LLC
785-625-1182



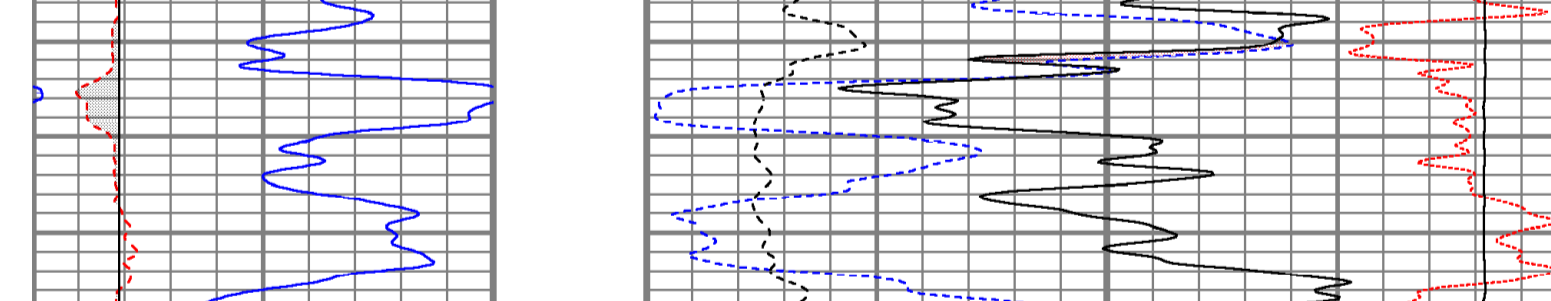
MAIN PASS

Database File	ppmishler-meslounit#1oh.db
Dataset Pathname	pass3.1
Presentation Format	digital_kcdnl
Dataset Creation	Fri Jan 14 14:40:47 2022
Charted by	Depth in Feet scaled 1:240



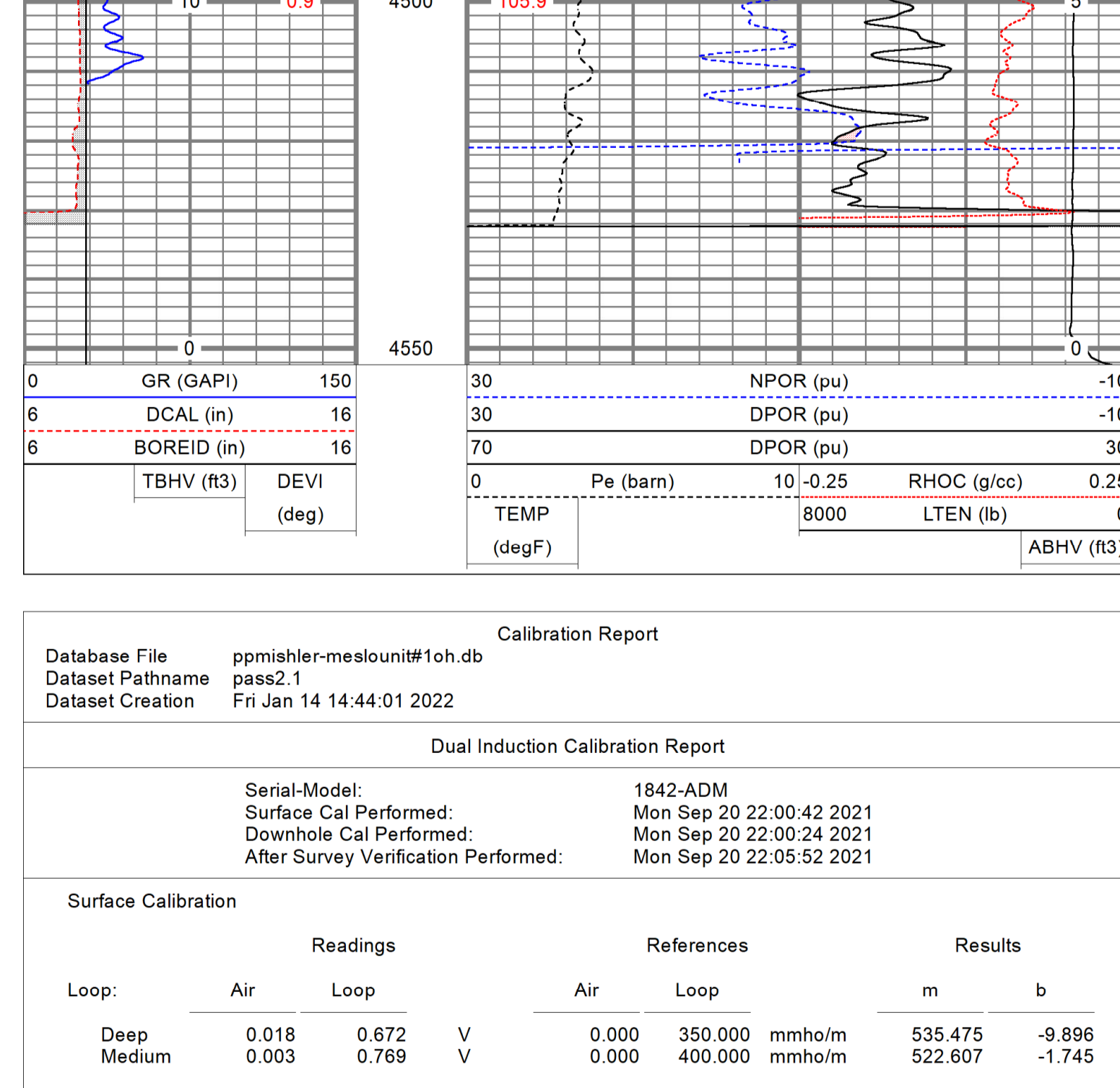
GR (GAPI)	150	NPOR (pu)	-10
DCAL (in)	16	DPOR (pu)	-10
BOREID (in)	16	Pe (barn)	10 -0.25
TBHV (ft3)	DEVI (deg)	RHOC (g/cc)	0.25
		TEMP (degF)	8000
		LTEN (lb)	0
		ABHV (ft3)	0

GR (GAPI)	150	NPOR (pu)	-10
DCAL (in)	16	DPOR (pu)	-10
BOREID (in)	16	Pe (barn)	10 -0.25
TBHV (ft3)	DEVI (deg)	RHOC (g/cc)	0.25
		TEMP (degF)	8000
		LTEN (lb)	0
		ABHV (ft3)	0



REPEAT SECTION

Database File	ppmishler-meslounit#1oh.db
Dataset Pathname	pass2.1
Dataset Creation	Fri Jan 14 14:44:01 2022
Charted by	Depth in Feet scaled 1:240



GR (GAPI)	150	NPOR (pu)	-10
DCAL (in)	16	DPOR (pu)	-10
BOREID (in)	16	Pe (barn)	10 -0.25
TBHV (ft3)	DEVI (deg)	RHOC (g/cc)	0.25
		TEMP (degF)	8000
		LTEN (lb)	0
		ABHV (ft3)	0

GR (GAPI)	150	NPOR (pu)	-10
DCAL (in)	16	DPOR (pu)	-10
BOREID (in)	16	Pe (barn)	10 -0.25
TBHV (ft3)	DEVI (deg)	RHOC (g/cc)	0.25
		TEMP (degF)	8000
		LTEN (lb)	0
		ABHV (ft3)	0

Calibration Report

Database File	ppmishler-meslounit#1oh.db
Dataset Pathname	pass2.1
Dataset Creation	Fri Jan 14 14:44:01 2022

Dual Induction Calibration Report

Serial-Model:	1842-ADM
Surface Cal Performed:	Mon Sep 20 22:00:42 2021
Downhole Cal Performed:	Mon Sep 20 22:00:24 2021
After Survey Verification Performed:	Mon Sep 20 22:05:52 2021

Surface Calibration

Loop:	Readings		References	Results	
	Air	Loop		m	b
Deep	0.018	0.672	0.000	350.000	535.475
Medium	0.003	0.769	0.000	400.000	522.607
Internal:	Zero	Cal	Zero	Cal	m
Deep	0.018	0.672	0.000	350.000	535.240
Medium	0.003	0.768	0.000	550.000	718.637

Downhole Calibration

Internal:	Readings		References		Results	
	Zero	Cal	Zero	Cal	m	b
Deep	-0.219	349.905	-0.343	349.810	1.000	-3.124
Medium	-0.118	399.722	-0.226	399.722	1.000	-3.108
Shallow	2.536	0.025	500.000	2.000	180.330	-1.504

After Survey Verification

Internal:	Readings		Targets		Results	
	Zero	Cal	Zero	Cal	m'	b'
Deep	0.000	0.000	0.000	349.905	1.000	-3.124
Medium	0.000	0.000	-0.118	399.722	1.000	-3.108
Shallow	0.000	0.000	500.000	2.000	1.000	0.000

Admry Lithodensity Calibration Report

Serial-Model:	1-C-C
Source:	Blue2
Master Calibration Performed:	Tue Oct 20 08:37:42 2020

Master Calibration

	Density	Far Detector	Near Detector
Magnesium	1.670 g/cc	6640.15	4353.97 cps
Aluminum	2.640 g/cc	1651.98	2729.31 cps
Aluminum+Sleeve	2.640 g/cc	1651.98	2729.31 cps

Spine Angle = 71.44 Density/Spine Ratio = 0.661

	PE	NLITH	NHARD
Magnesium	1.900 barn	1410.00	1000.00 cps
Aluminum	2.400 barn	1101.00	918.50 cps
Aluminum+Sleeve	5.000 barn	656.00	951.00 cps

M = 0.448 B = -0.112 R = 0.999

	Size	Reading
Small Ring	8.30 in	8.61 V
Large Ring	14.30 in	12.40 V

Neutron Calibration Report

Serial Number:	AD5139
Tool Model:	ADNYS139
Performance:	(Not Performed)
Calibrator Value:	1 NAPI
Calibrator Reading:	1 cps
Sensitivity:	1 NAPI/cps

Temperature Calibration Report

Serial Number:	WthMC
Tool Model:	WMC
Performed:	Fri Apr 19 12:15:04 2019
Reference:	0.00 degF
Reading:	0.00 degF
Low Reference:	0.00 degF
High Reference:	1.00 degF
Gain:	1.00
Offset:	0.00
Delta Spacing:	1

Inclinometer Calibration Report

Performed:	Wed May 5 19:20:48 2021		
Low Read.	High Read.	Low Ref.	High Ref.

X Accelerometer	205.00	1843.00	-1.00	1.00	gee
Y Accelerometer	205.00	1843.00	-1.00	1.00	gee
Z Accelerometer					gee

Gamma Ray Calibration Report

Serial Number:	WthMC
Tool Model:	WMC
Performed:	Wed May 5 19:21:08 2021
Calibrator Value:	1.0 GAPI
Background Reading:	0.0 cps
Calibrator Reading:	1.0 cps
Sensitivity:	1.0000 GAPI/cps