



**MICRO
LOG**

Company **FOURWINDS OIL CORPORATION**
 Well **D.G. HANSEN #1**
 Field **RAY**
 County **PHILLIPS** State **KANSAS**

Location: **API # : 15-147-20759-0000**
1500' FNL & 330' FEL
N2-NE-SE-NE
 SEC 29 TWP 5S RGE 20W
 Permanent Datum **GROUND LEVEL Elevation 2233**
 Log Measured From **KELLY BUSHING 8' A.G.L**
 Drilling Measured From **KELLY BUSHING**

Other Services
CDL/CNL
DIL

Elevation

K.B. 2241
 D.F. 2239
 G.L. 2233

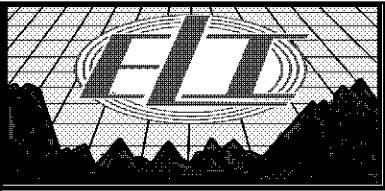
Date	2/19/22		
Run Number	TWO		
Depth Driller	3658		
Depth Logger	3659		
Bottom Logged Interval	3657		
Top Log Interval	3100		
Casing Driller	8 5/8" @ 224		
Casing Logger	224		
Bit Size	7 7/8		
Type Fluid in Hole	CHEMICAL MUD	CHLORIDES 1000 PPM	
Density / Viscosity	9.2/53		
PH / Fluid Loss	11.0/7.8		
Source of Sample	FLOWLINE		
Rm @ Meas. Temp	1.20 @ 65F		
Rmt @ Meas. Temp	.90 @ 65F		
Rmc @ Meas. Temp	1.44 @ 65F		
Source of Rmf / Rmc	MEASUREMENT		
Rm @ BHT	.69 @ 113F		
Time Circulation Stopped	2 HOURS		
Time Logger on Bottom	////		
Maximum Recorded Temperature	113F		
Equipment Number	3802		
Location	HAYS, KANSAS		
Recorded By	JASON CAPPELLUCCI	TJ DREILING	
Witnessed By	CAMERON BRIN		

<<< Fold Here >>>

All interpretations are opinions based on inferences from electrical or other measurements and we cannot and do not guarantee the accuracy or correctness of any interpretation, and we shall not, except in the case of gross or willful negligence on our part, be liable or responsible for any loss, costs, damages, or expenses incurred or sustained by anyone resulting from any interpretation made by any of our officers, agents or employees. These interpretations are also subject to our general terms and conditions set out in our current Price Schedule.

Comments

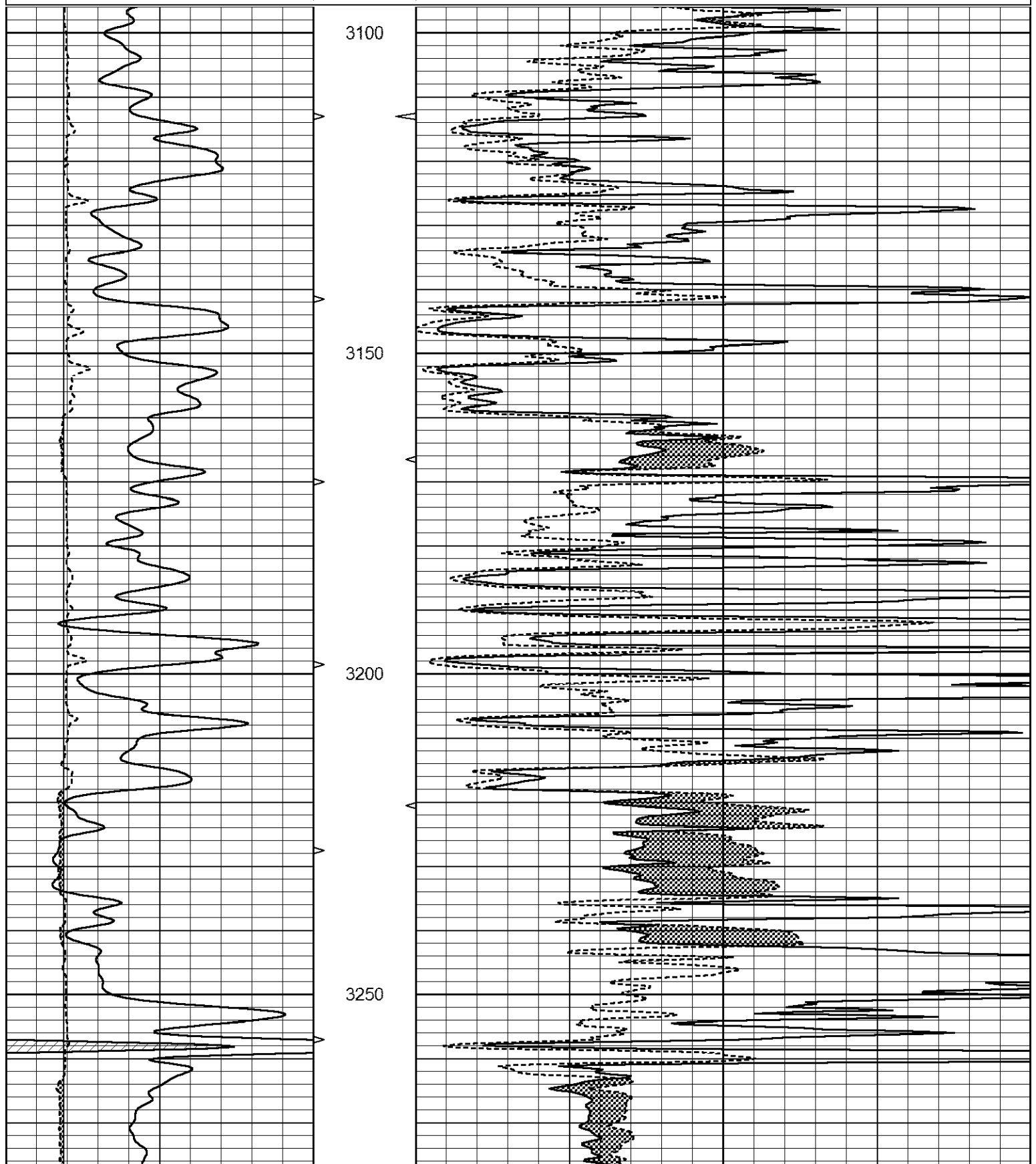
THANK YOU FOR USING ELI WIRELINE SERVICES, HAYS, KS. (785) 628-6395
 DIRECTIONS
 STOCKTON, KS. - 11 NORTH TO COZY COVE RD. - 15 WEST - SOUTH INTO

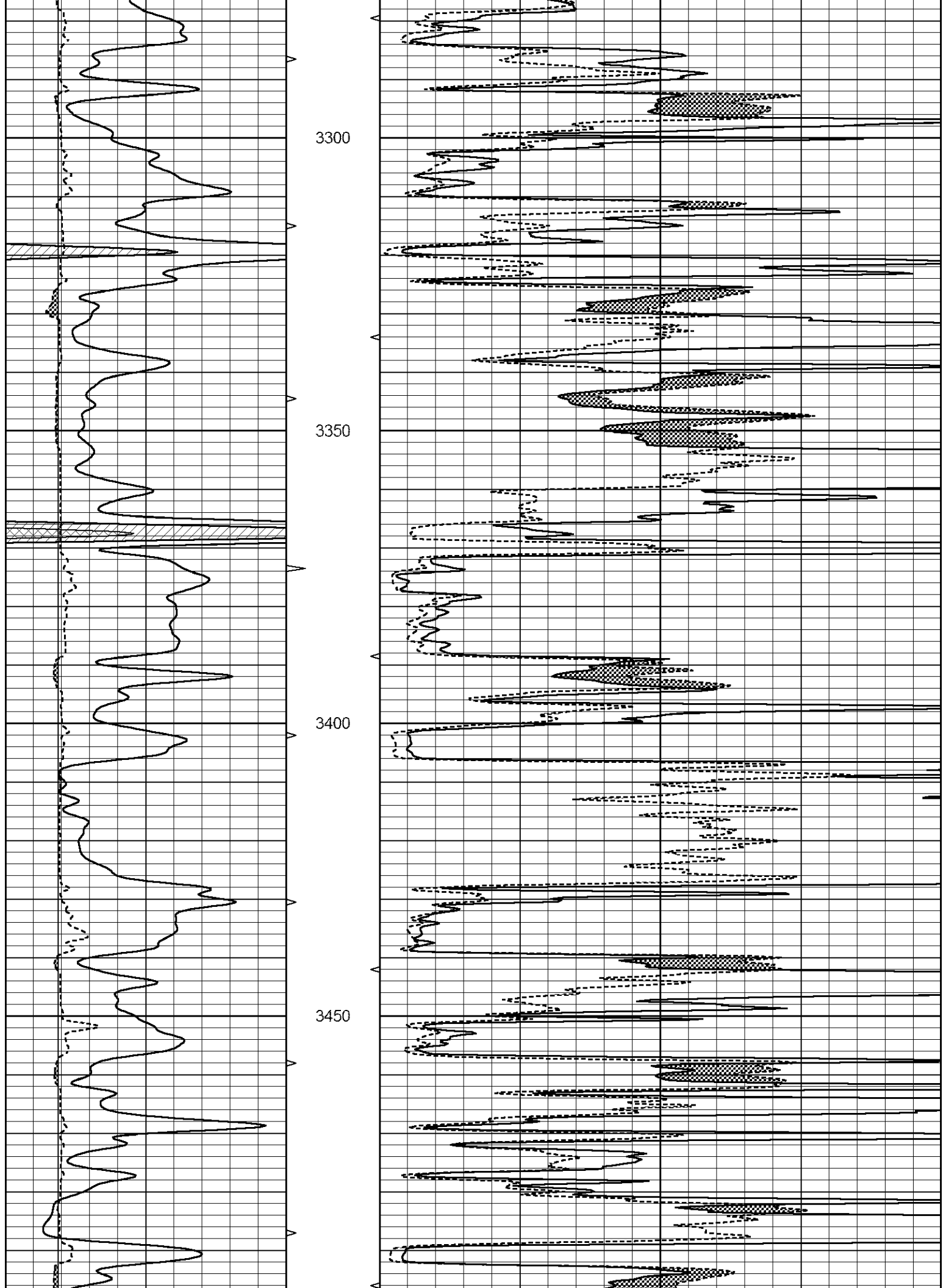


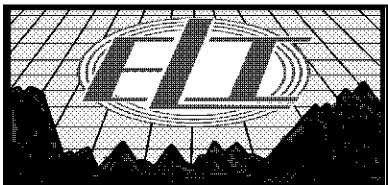
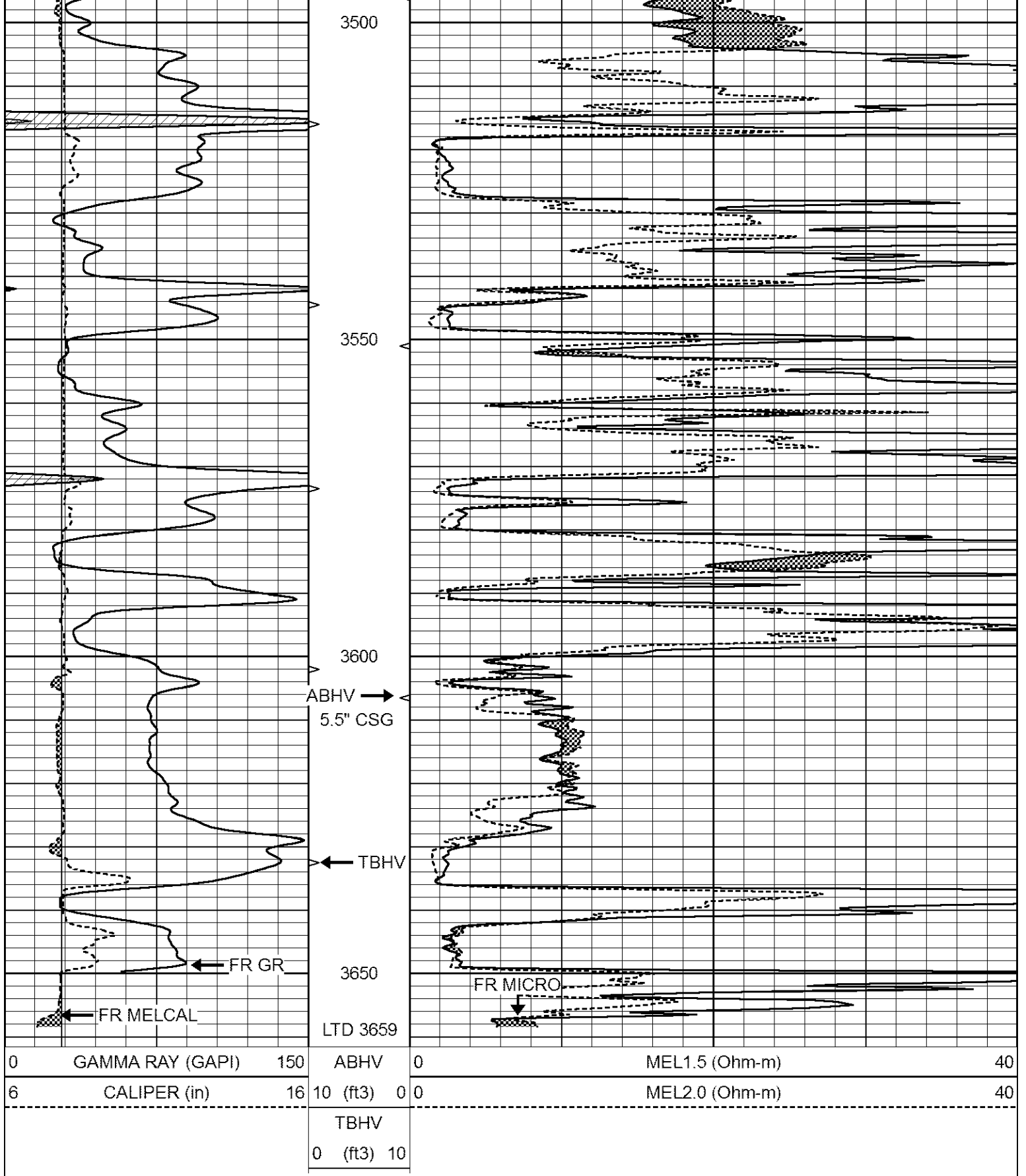
MAIN SECTION

Database File 6242ddn.db
 Dataset Pathname pass6.1
 Presentation Format _micro
 Dataset Creation Sat Feb 19 20:03:57 2022
 Charted by Depth in Feet scaled 1:240

0	GAMMA RAY (GAPI)	150	ABHV	0	MEL1.5 (Ohm-m)	40
6	CALIPER (in)	16	10 (ft3)	0	MEL2.0 (Ohm-m)	40
			TBHV			
			0 (ft3)	10		

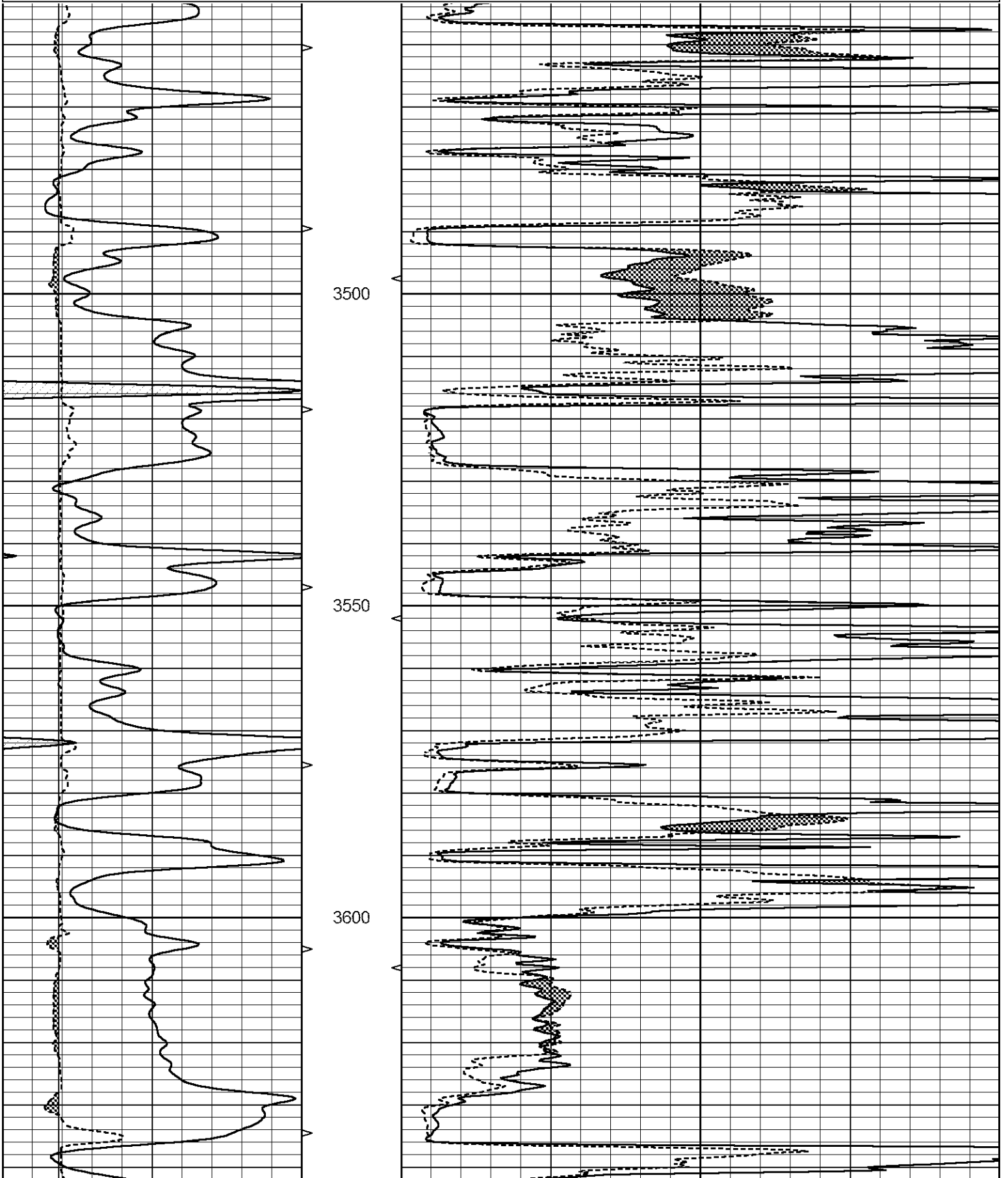


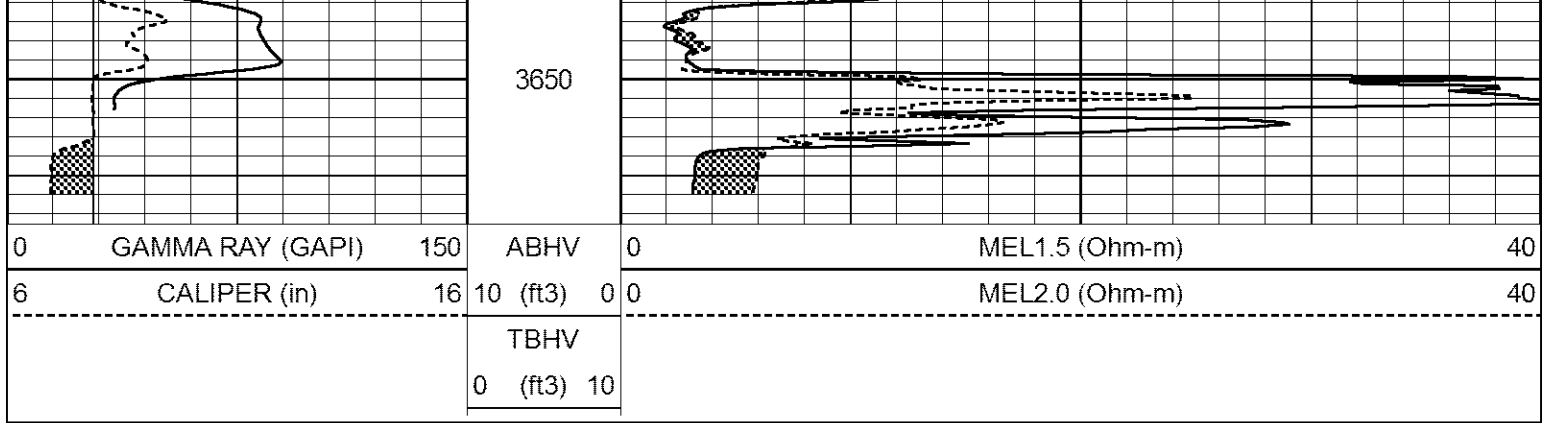




REPEAT SECTION

0	GAMMA RAY (GAPI)	150	ABHV	0	MEL1.5 (Ohm-m)	40
6	CALIPER (in)	16	10 (ft3)	0 0	MEL2.0 (Ohm-m)	40
			TBHV			
			0 (ft3)	10		





Calibration Report

Database File 6242ddn.db
 Dataset Pathname pass5.1
 Dataset Creation Sat Feb 19 20:04:16 2022

MICRO_USR Calibration Report

Serial Number: 070910
 Tool Model: ProbeL
 Performed: Sun Jan 23 09:07:22 2022

Caliper Calibration: Gain=7.192 Offset=3.002

References	Low Cal	High Cal
Readings	8.000	14.000
	0.723	1.557

1.5" Calibration: Gain=30.000 Offset=-1.000

References	Low Cal	High Cal
Readings	0.000	20.000
	0.004	1.335

2" Calibration: Gain=60.000 Offset=-3.000

References	Low Cal	High Cal
Readings	0.000	20.000
	0.004	1.029

Microlog Calibration Report

Serial-Model: 070910-ProbeL
 Performed: (Not Performed)

	Readings		V	References			Results	
	Zero	Cal		Zero	Cal		m	b
Normal	0.0000	1.0000	V	0.0000	1.0000	Ohm-m	1.0000	0.0000
Inverse	0.0000	1.0000	V	0.0000	1.0000	Ohm-m	1.0000	0.0000
Caliper	0.0000	1.0000	V	0.0000	1.0000	in	1.0000	0.0000

Gamma Ray Calibration Report

Serial Number: 070558
 Tool Model: Probe1
 Performed: Fri Oct 30 21:32:56 2020

Calibrator Value: 1.0 GAPI

Background Reading: 0.0 cps
 Calibrator Reading: 1.0 cps

Sensitivity:

0.2700

GAPI/cps