



**COMPENSATED  
DENSITY/NEUTRON  
LOG**

Company **FOURWINDS OIL CORPORATION**  
 Well **D.G. HANSEN #1**  
 Field **RAY**  
 County **PHILLIPS** State **KANSAS**

Location: **API # : 15-147-20759-0000**  
**1500' FNL & 330' FEL**  
**N2-NE-SE-NE**  
 SEC 29 TWP 5S RGE 20W  
 Permanent Datum **GROUND LEVEL Elevation 2233**  
 Log Measured From **KELLY BUSHING 8' A.G.L**  
 Drilling Measured From **KELLY BUSHING**

Company **FOURWINDS OIL CORPORATION**  
 Well **D.G. HANSEN #1**  
 Field **RAY**  
 County **PHILLIPS**  
 State **KANSAS**

Date	2/19/22		
Run Number	ONE		
Depth Driller	3658		
Depth Logger	3659		
Bottom Logged Interval	3635		
Top Log Interval	3100		
Casing Driller	8 5/8" @ 224		
Casing Logger	224		
Bit Size	7 7/8		
Type Fluid in Hole	CHEMICAL MUD	CHLORIDES 1000 PPM	
Density / Viscosity	9.2/53		
pH / Fluid Loss	11.0/7.8		
Source of Sample	FLOWLINE		
Rm @ Meas. Temp	1.20 @ 65F		
Rmt @ Meas. Temp	.90 @ 65F		
Rmc @ Meas. Temp	1.44 @ 65F		
Source of Rmf / Rmc	MEASUREMENT		
Rm @ BHT	.69 @ 113F		
Time Circulation Stopped	2 HOURS		
Time Logger on Bottom	////		
Maximum Recorded Temperature	113F		
Equipment Number	3802		
Location	HAYS, KANSAS		
Recorded By	JASON CAPPELLUCCI	TJ DREILING	
Witnessed By	CAMERON BRIN		

<<< Fold Here >>>

All interpretations are opinions based on inferences from electrical or other measurements and we cannot and do not guarantee the accuracy or correctness of any interpretation, and we shall not, except in the case of gross or willful negligence on our part, be liable or responsible for any loss, costs, damages, or expenses incurred or sustained by anyone resulting from any interpretation made by any of our officers, agents or employees. These interpretations are also subject to our general terms and conditions set out in our current Price Schedule.

**Comments**

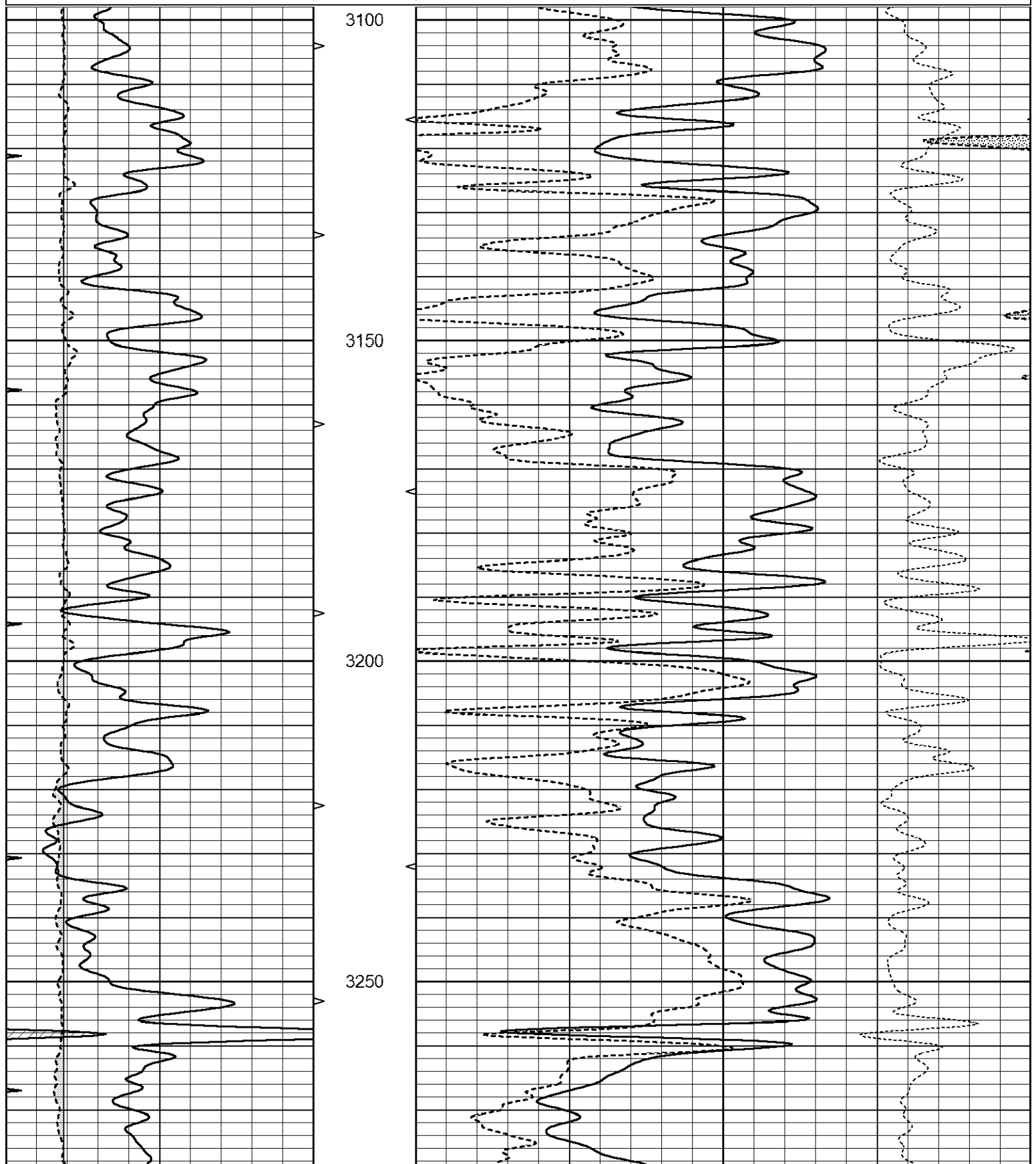
THANK YOU FOR USING ELI WIRELINE SERVICES, HAYS, KS. ( 785 ) 628-6395  
 DIRECTIONS  
 STOCKTON, KS. - 11 NORTH TO COZY COVE RD. - 15 WEST - SOUTH INTO

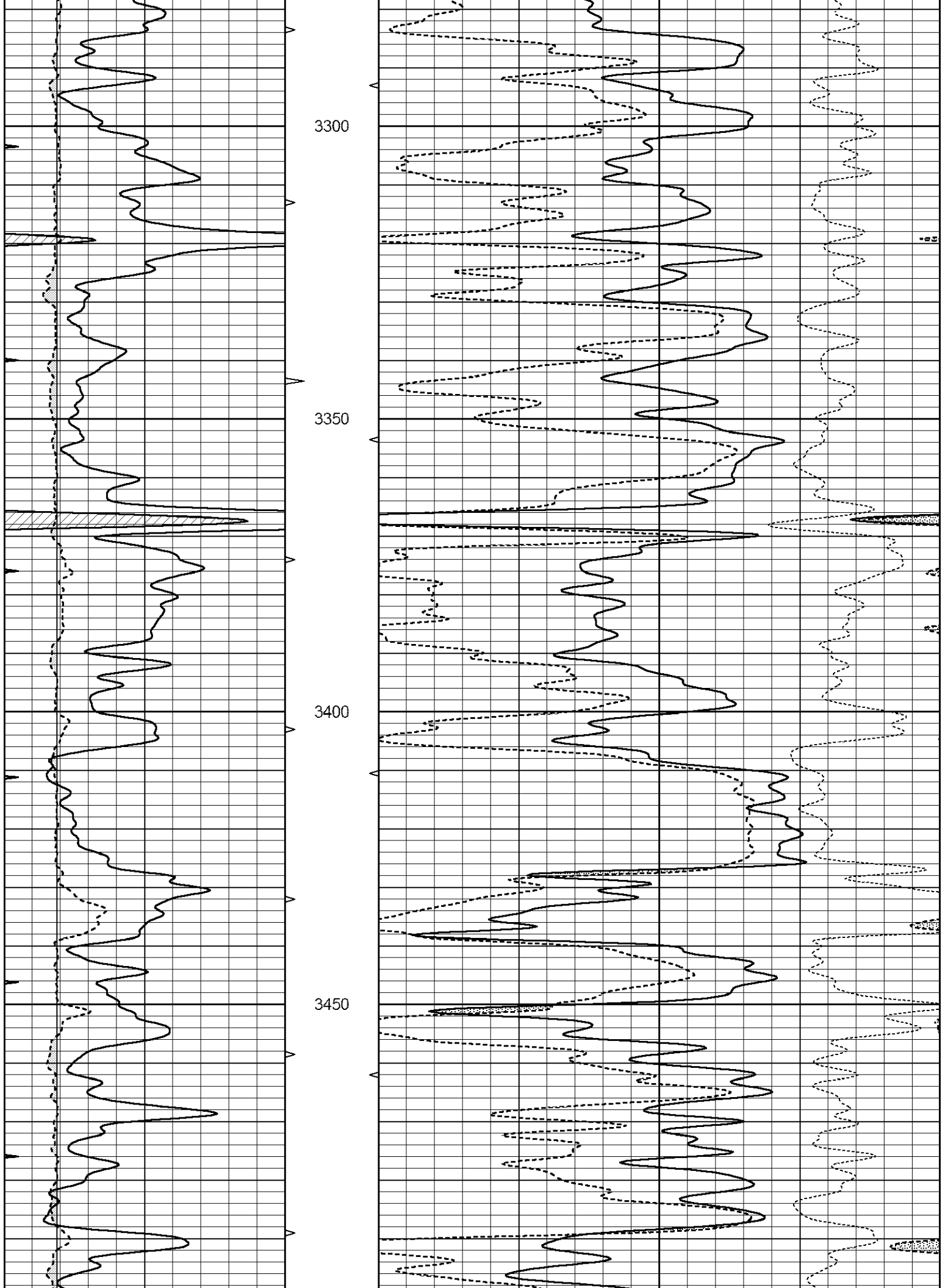


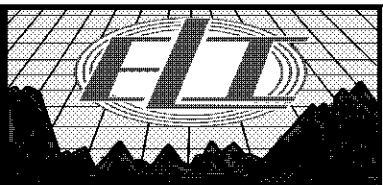
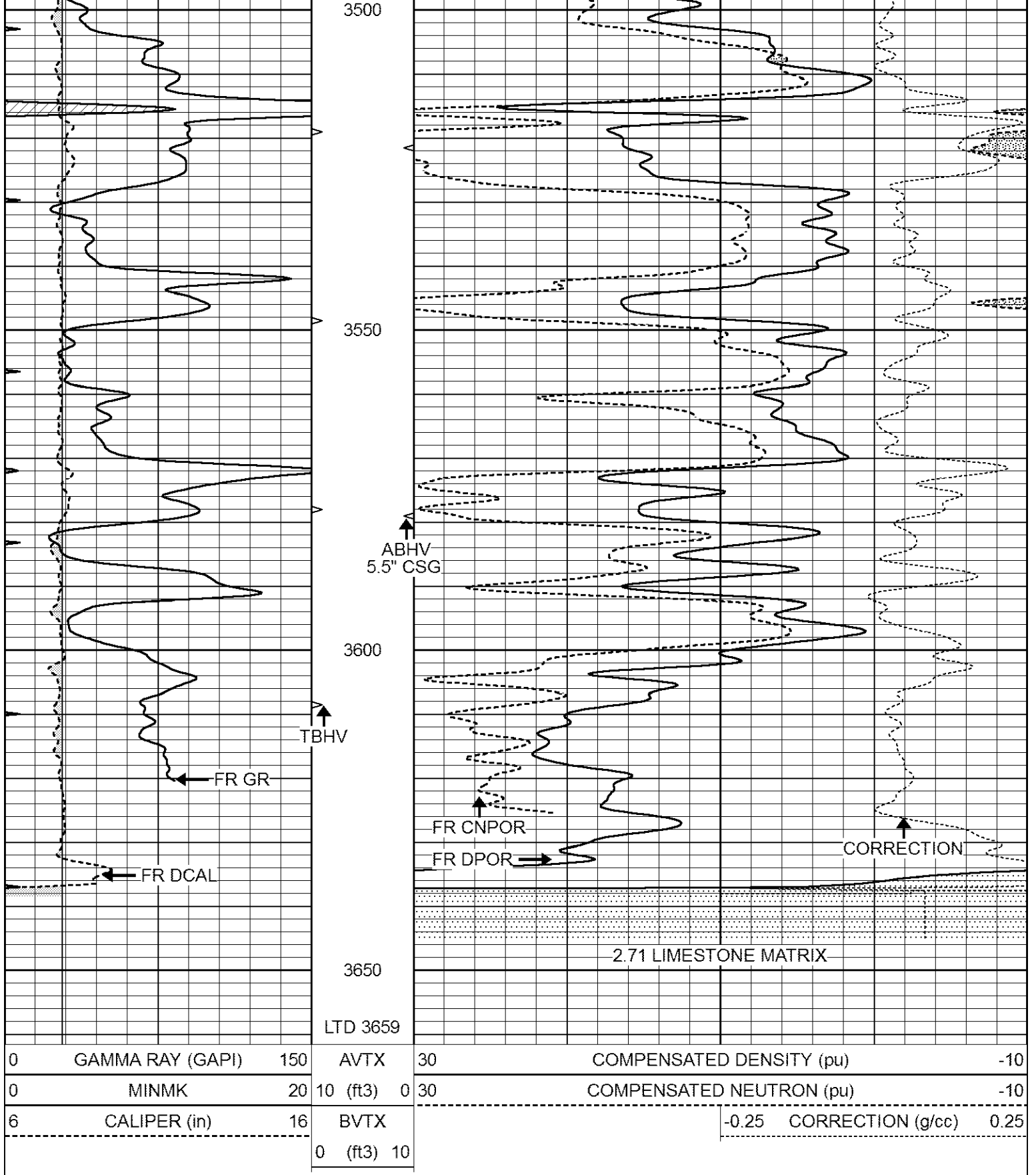
**MAIN SECTION**

Database File 6242ddn.db  
 Dataset Pathname pass3.1  
 Presentation Format \_den\_neu  
 Dataset Creation Sat Feb 19 18:47:07 2022  
 Charted by Depth in Feet scaled 1:240

0	GAMMA RAY (GAPI)	150	AVTX	30	COMPENSATED DENSITY (pu)	-10
0	MINMK	20	10 (ft3) 0	30	COMPENSATED NEUTRON (pu)	-10
6	CALIPER (in)	16	BVTX		-0.25 CORRECTION (g/cc)	0.25
			0 (ft3) 10			

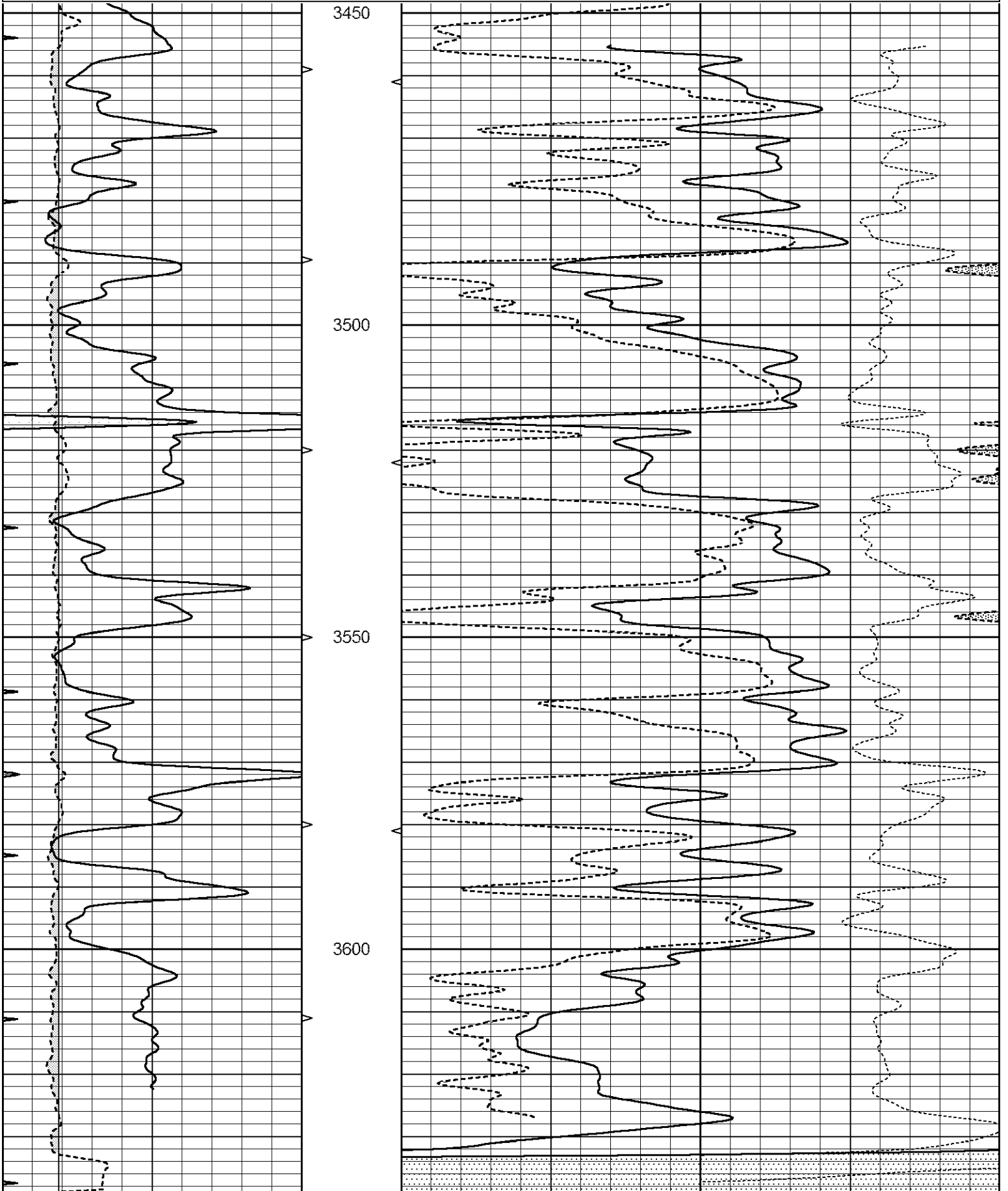






# REPEAT SECTION

0	GAMMA RAY (GAPI)	150	AVTX	30	COMPENSATED DENSITY (pu)	-10
0	MINMK	20	10 (ft3) 0	30	COMPENSATED NEUTRON (pu)	-10
6	CALIPER (in)	16	BVTX		-0.25 CORRECTION (g/cc)	0.25
			0 (ft3) 10			



			3650												
0	GAMMA RAY (GAPI)	150	AVTX	30	COMPENSATED DENSITY (pu)										-10
0	MINMK	20	10 (ft3) 0	30	COMPENSATED NEUTRON (pu)										-10
6	CALIPER (in)	16	BVTX											-0.25 CORRECTION (g/cc) 0.25	
			0 (ft3) 10												

**Calibration Report**

Database File 6242ddn.db  
 Dataset Pathname pass2.1  
 Dataset Creation Sat Feb 19 18:45:31 2022

**Dual Induction Calibration Report**

Serial-Model: FW1410-56-Probe  
 Surface Cal Performed: Mon Jun 15 22:52:02 2020  
 Downhole Cal Performed: Tue Jul 25 12:15:37 2017  
 After Survey Verification Performed: Tue Jul 25 12:15:38 2017

**Surface Calibration**

Loop:	Readings				References			Results	
	Air	Loop			Air	Loop		m	b
Deep	0.008	0.765	V	1.000	400.000	mmho/m	400.061	-3.201	
Medium	-0.056	0.761	V	1.000	464.000	mmho/m	425.187	32.510	
Internal:	Zero	Cal		Zero	Cal		m	b	
Deep	0.005	0.624	V	0.000	400.000	mmho/m	645.611	-3.034	
Medium	0.012	0.721	V	0.000	464.000	mmho/m	653.591	-7.532	

**Downhole Calibration**

	Readings				References			Results	
	Zero	Cal			Zero	Cal		m'	b'
Deep	-0.647	301.329	mmho/m	-0.780	336.378	mmho/m	1.117	-0.058	
Medium	38.256	411.013	mmho/m	39.046	441.706	mmho/m	1.080	-2.280	
LL3		7.471	V		2500.000	Ohm-m			
		0.001	V		20.000	Ohm-m			
		-7.085	V		4000.000	mmho-m			

**After Survey Verification**

	Readings				Targets			Results	
	Zero	Cal			Zero	Cal		m'	b'
Deep	0.000	0.000	mmho/m	-0.647	301.329	mmho/m	1.000	0.000	
Medium	0.000	0.000	mmho/m	38.256	411.013	mmho/m	1.000	0.000	
LL3		0.000	Ohm-m		1500.000	Ohm-m			
		0.000	Ohm-m		20.000	Ohm-m			
		0.000	mmho-m		3745.000	mmho-m			

**Litho Density Calibration Report**  
 Serial: 140704  
 Model: V4\_10P  
 Source Number: 74GBq-19

	Background	Aluminum	Magnesium	
Window 1	515.75	5443.58	23734.91	cps
Window 2	41.45	1226.32	5757.32	cps
Window 4	224.78	1223.03	5315.97	cps
Window 5	549.25	7983.61	15349.73	cps
Window 6	43.12	1271.88	2496.98	cps
Window 8	261.02	2595.65	4928.92	cps
Bulk Density	-	2.6020	1.6830	g/cc
Pe	-	3.0000	2.5070	b/e

LS Alpha: : -1.8571                      SS Alpha: : -0.7875                      LS CPE: : 1.1396  
 LS Beta: : 128618.9672                      SS Beta: : 18780.4869                      SS CPE: : 1.5966

Before Survey Background Counts Verification

Performed: Wed Dec 31 18:00:00 1969

Window 1	0.00	cps
Window 2	0.00	cps
Window 4	0.00	cps
Window 5	0.00	cps
Window 6	0.00	cps
Window 8	0.00	cps

After Survey Background Counts Verification

Performed: Wed Dec 31 18:00:00 1969

Window 1	0.00	cps
Window 2	0.00	cps
Window 4	0.00	cps
Window 5	0.00	cps
Window 6	0.00	cps
Window 8	0.00	cps

Lithodensity Caliper Calibration

Performed: Fri Feb 18 15:41:27 2022

Results Readings		References (in)		Gain	Offset
Low	High	Low	High		
8107.9	11082.1	8.0	14.0	0.0	-8.1

Before Survey Caliper Verification

Performed:

Reference	Reading
_____	_____
Caliper (in)	

After Survey Caliper Verification

Performed:

Reference	Reading
_____	_____
Caliper (in)	

Compensated Neutron Calibration Report

Serial Number: 080621PMC  
 Tool Model: NABORS

PRE-SURVEY VERIFICATION

Detector	Readings	Measured	Target
Short Space	cps		
Long Space	cps	pu	pu

POST-SURVEY VERIFICATION

Detector	Readings	Measured	Target
Short Space	cps		
Long Space	cps	pu	pu

Gamma Ray Calibration Report

Serial Number:	7	
Tool Model:	Probe1	
Performed:	Tue Jan 19 17:50:08 2021	
Calibrator Value:	1.0	GAPI
Background Reading:	0.0	cps
Calibrator Reading:	1.0	cps
Sensitivity:	0.5300	GAPI/cps