

SONIC
LOG



Company RJM COMPANY
Well DISQUE #2
Field KRAFT - PRUSA
County BARTON State KANSAS

Location: API #: 15-009-26332-0000
330' FNL & 1500' FEL
E/2 - NE - NW - NE
SEC 9 TWP 17S RGE 11W
Permanent Datum GROUND LEVEL Elevation 1860
Log Measured From KELLY BUSHING 10' A.G.L.
Drilling Measured From KELLY BUSHING
Other Services
CDL/CNL
DIL/MEI
Elevation
K.B. 1870
D.F. 1868
G.L. 1860

Date	2/22/22
Run Number	TWO
Depth Driller	3308
Depth Logger	3310
Bottom Logged Interval	3302
Top Log Interval	300
Casing Driller	8 5/8"@356'
Casing Logger	356
Bit Size	7 7/8"
Type Fluid in Hole	CHEMICAL MUD
Density / Viscosity	9.1/44
PH / Fluid Loss	9.5/9.2
Source of Sample	FLOWLINE
Rm @ Meas. Temp	.750@45F
Rmf @ Meas. Temp	.563@45F
Rmc @ Meas. Temp	.900@45F
Source of Rmf / Rmc	MEASUREMENT
Rm @ BHT	.307@110F
Time Circulation Stopped	9.5 HOURS
Time Logger on Bottom	110F
Maximum Recorded Temperature	6:30 A.M.
Equipment Number	922339
Location	HAYS, KANSAS
Recorded By	JEFF LUEBBERS
Witnessed By	STEVE MURPHY

<<< Fold Here >>>

All interpretations are opinions based on inferences from electrical or other measurements and we cannot and do not guarantee the accuracy or correctness of any interpretation, and we shall not, except in the case of gross or willful negligence on our part, be liable or responsible for any loss, costs, damages, or expenses incurred or sustained by anyone resulting from any interpretation made by any of our officers, agents or employees. These interpretations are also subject to our general terms and conditions set out in our current Price Schedule.

15-009-26332-0000 Comments

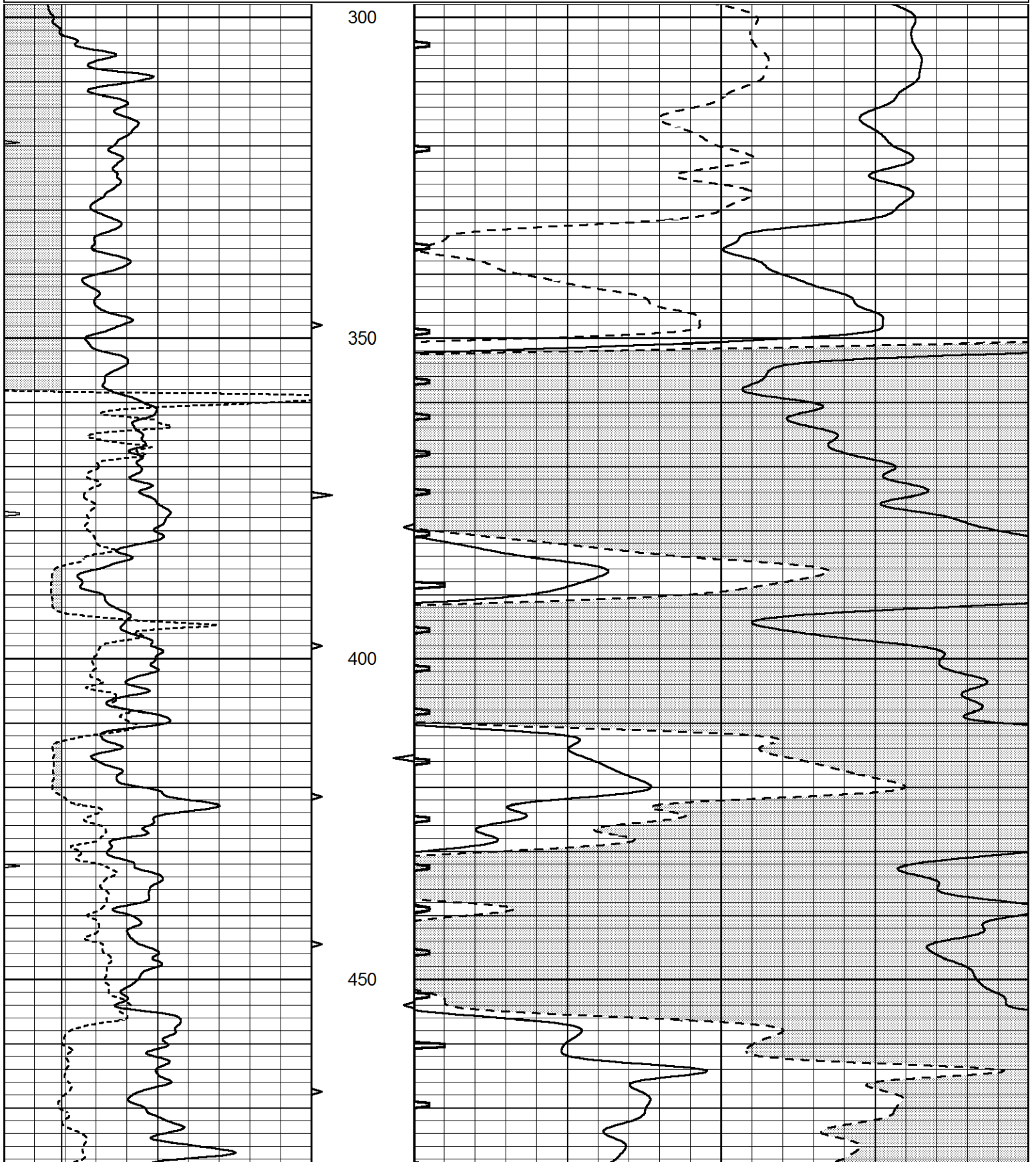
THANK YOU FOR USING ELI WIRELINE HAYS, KANSAS (785) 628-6395
DIRECTIONS
CLAFLIN, KS., 5N. ON BLKTOP, 1/2W., S. INTO

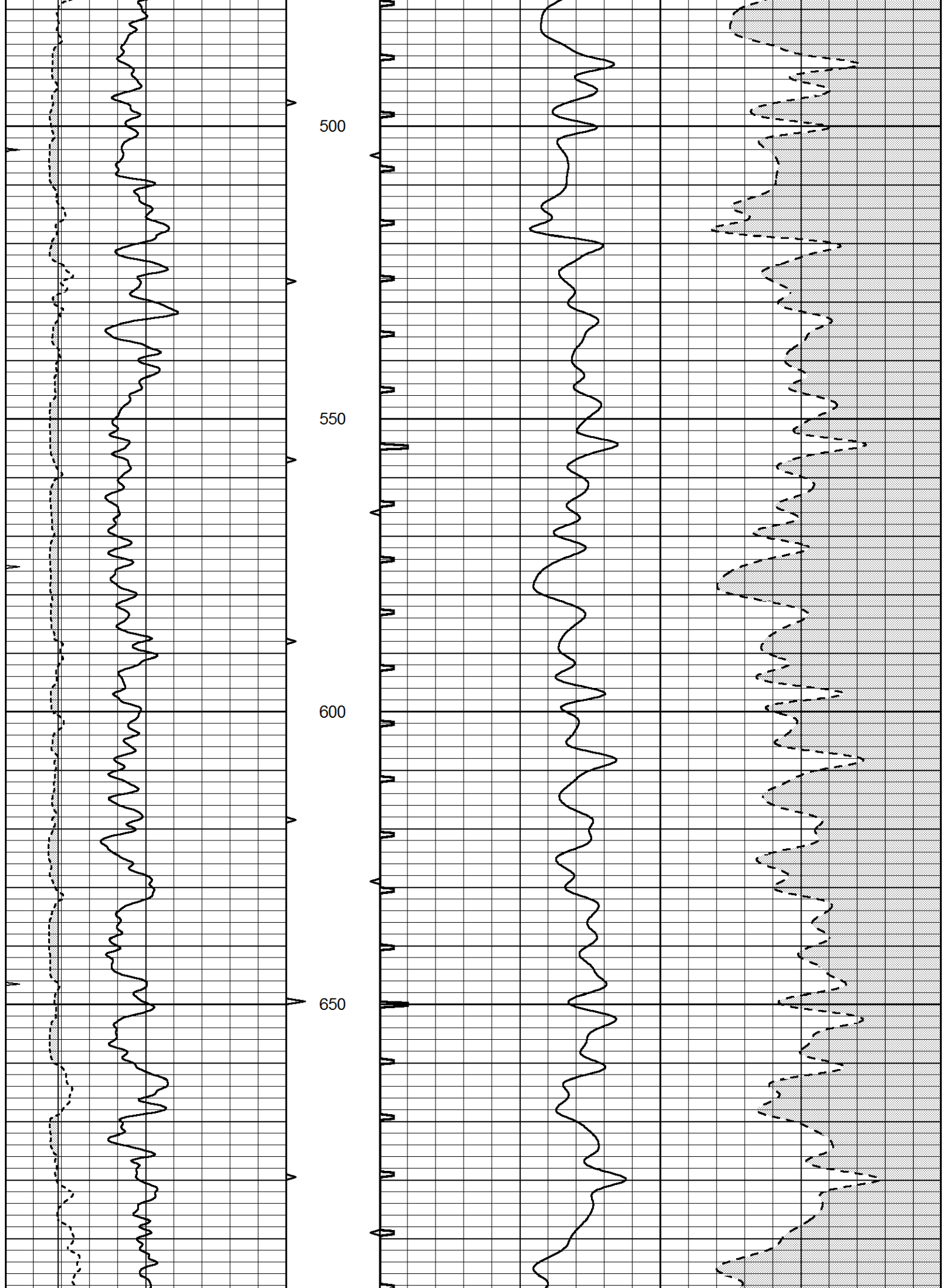


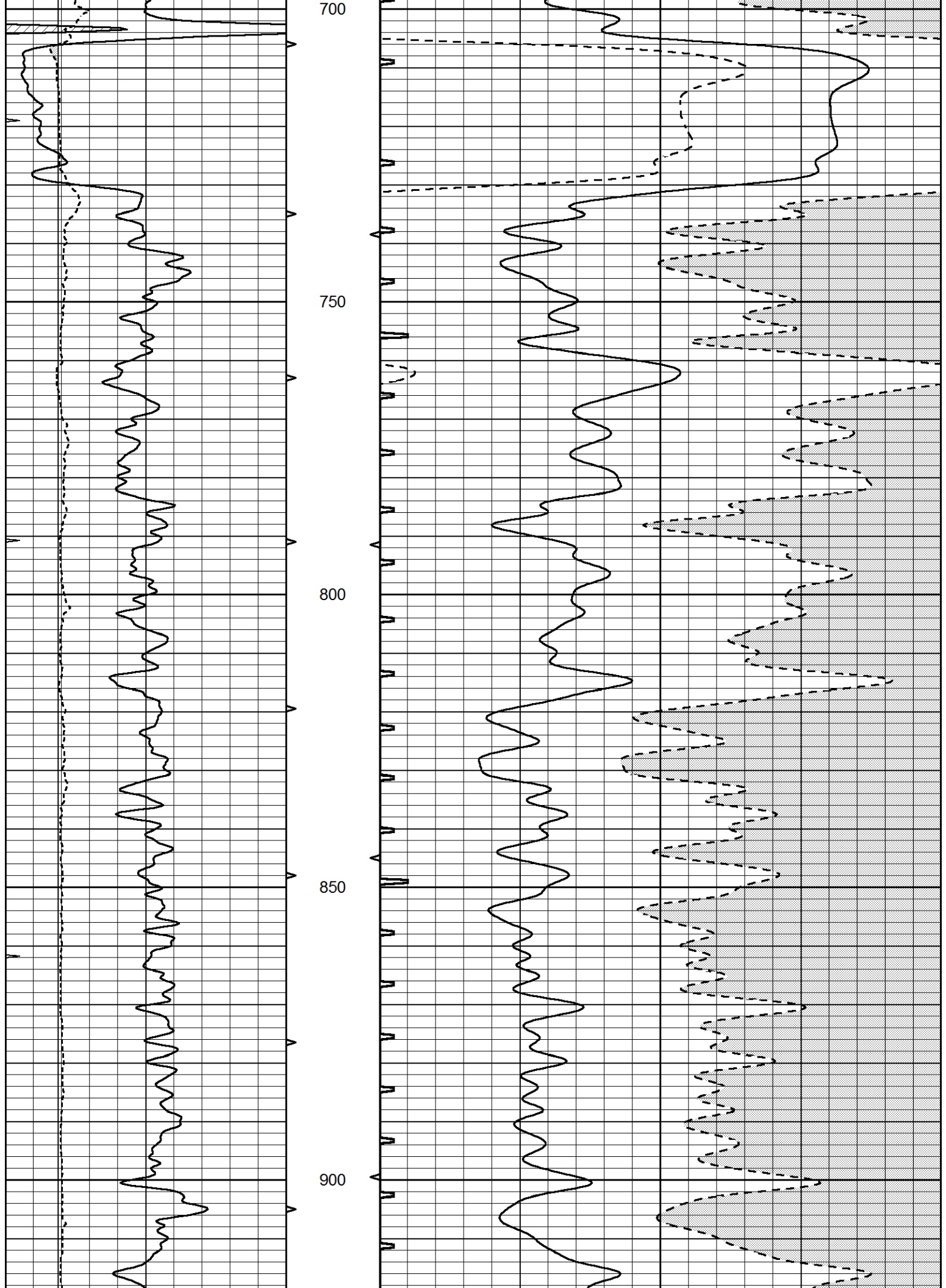
MAIN SECTION

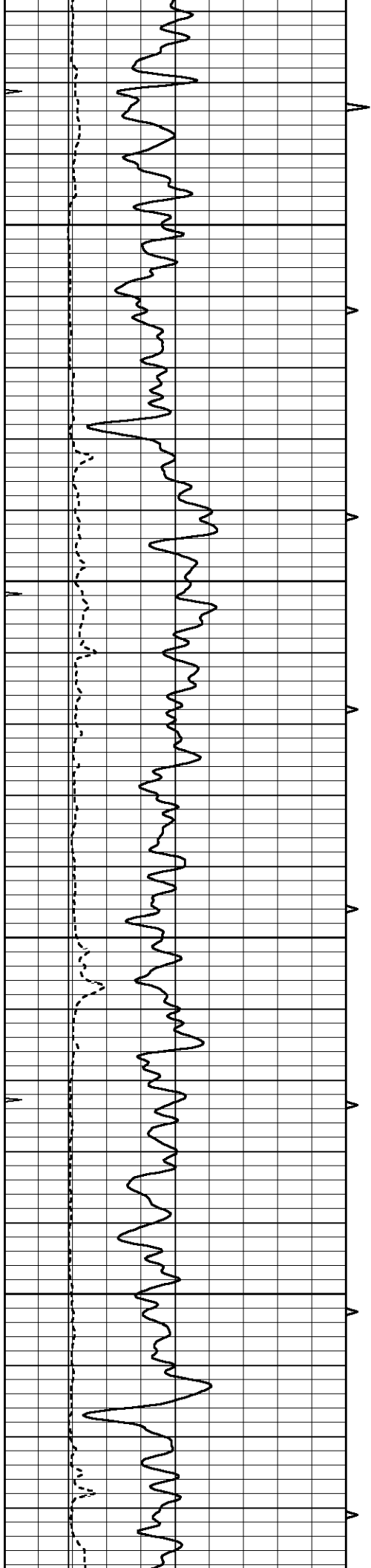
Database File 6254ddn.db
 Dataset Pathname pass7.2
 Presentation Format slt
 Dataset Creation Tue Feb 22 09:26:58 2022
 Charted by Depth in Feet scaled 1:240

0	GAMMA RAY (GAPI)	150	ABHV	140	DELTA TIME (usec/ft)	40	
6	CALIPER (in)	16	10 (ft3)	0	30	SONIC POROSITY (pu)	-10
0	MINMK	20	TBHV	0	ITT (msec)	20	
			0 (ft3)	10			







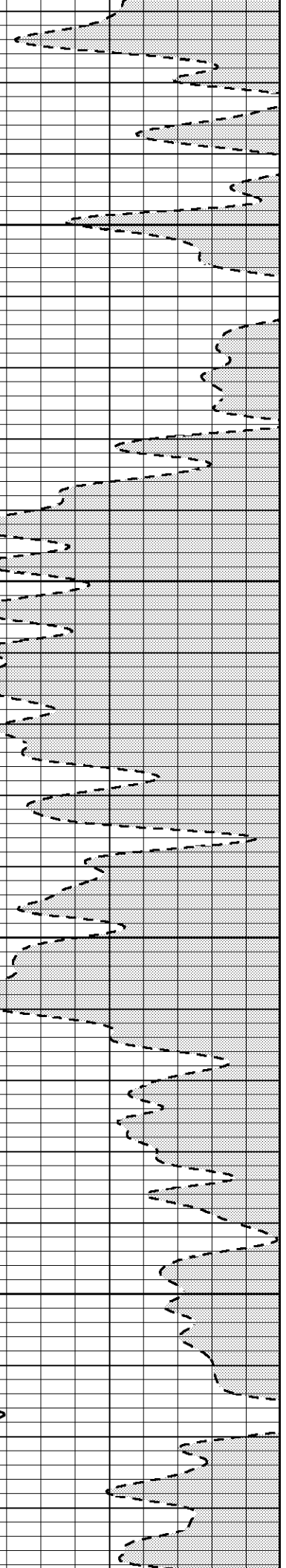
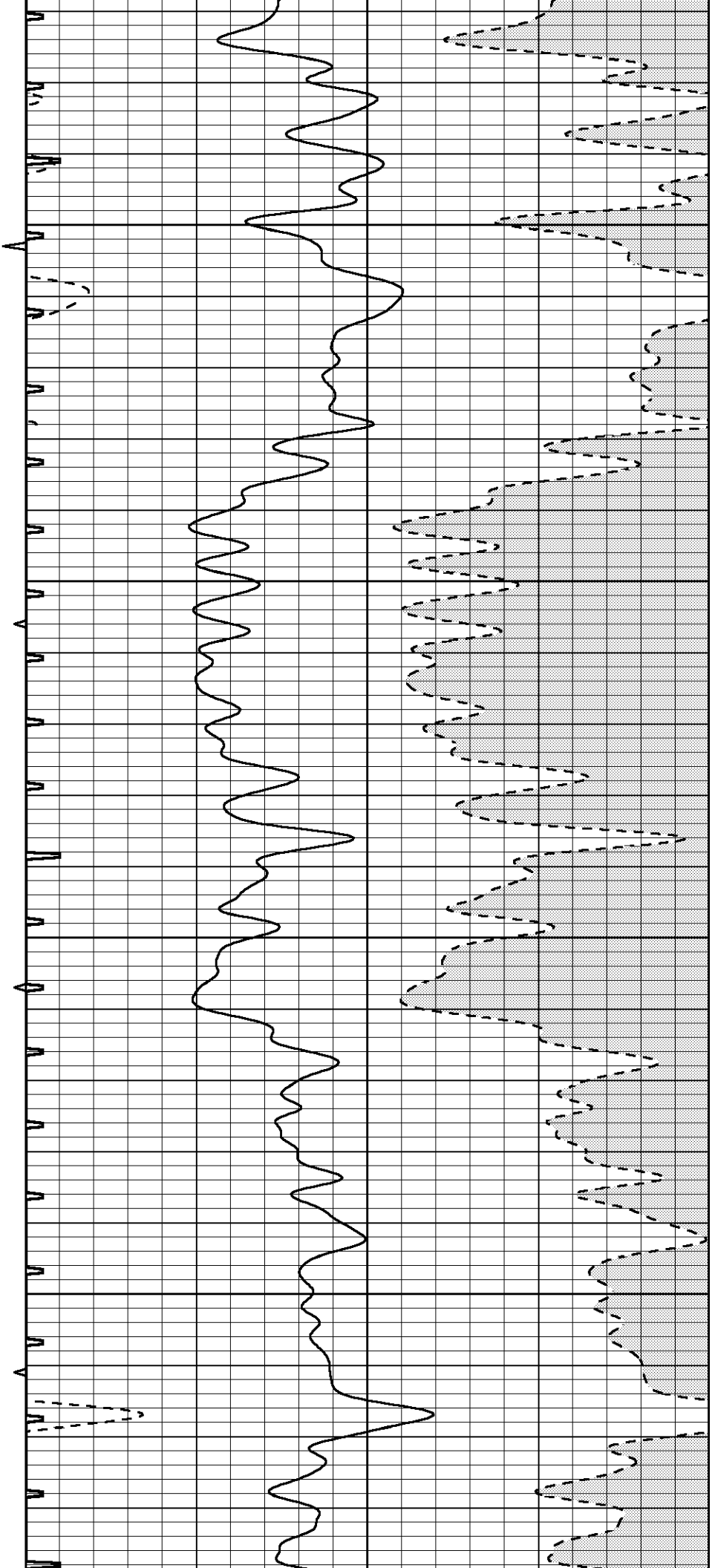


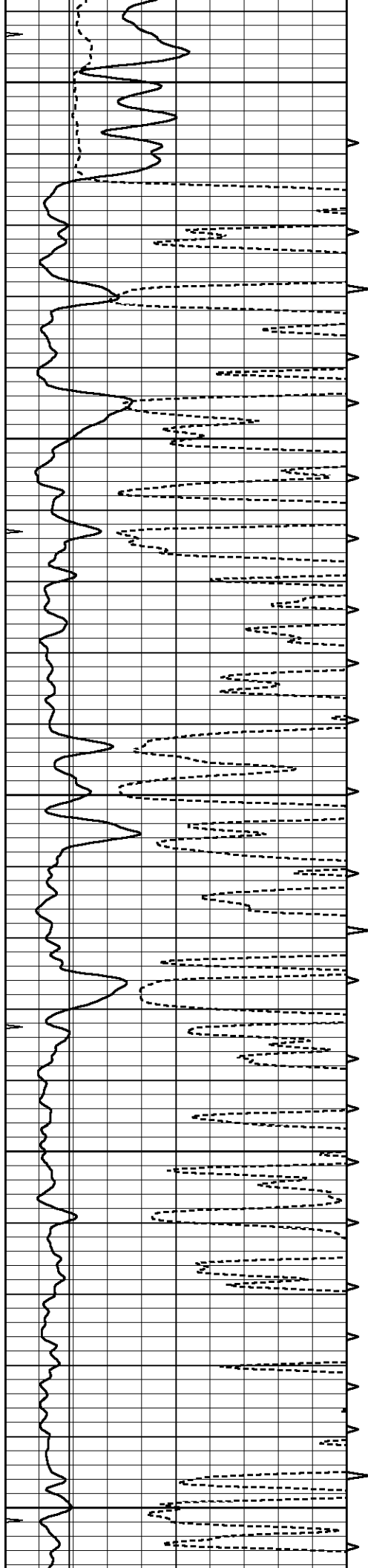
950

1000

1050

1100





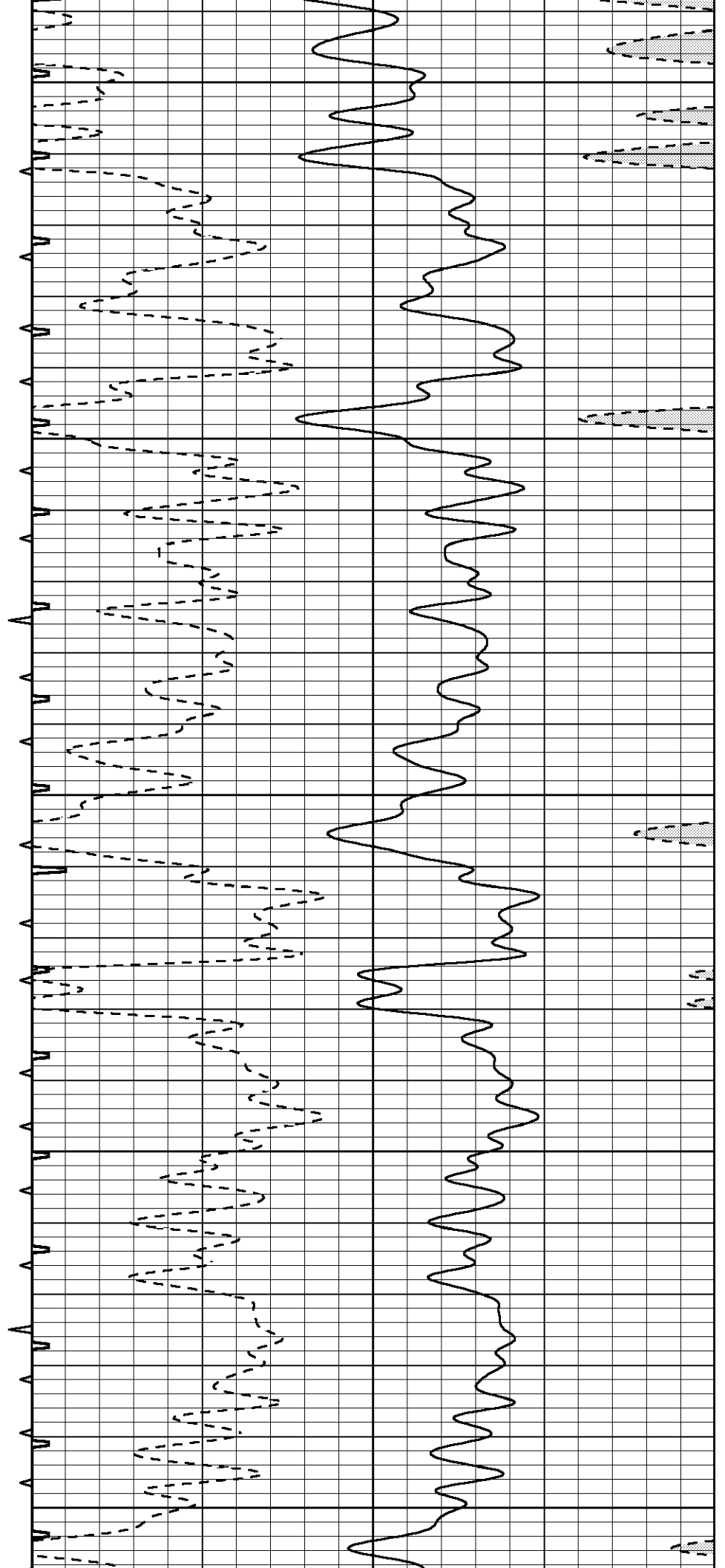
1150

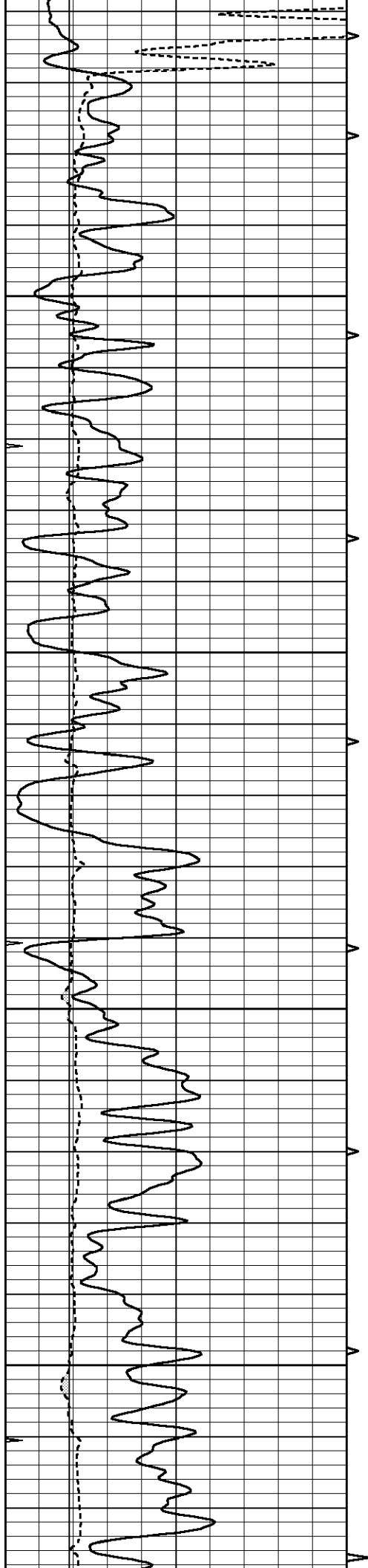
1200

1250

1300

1350



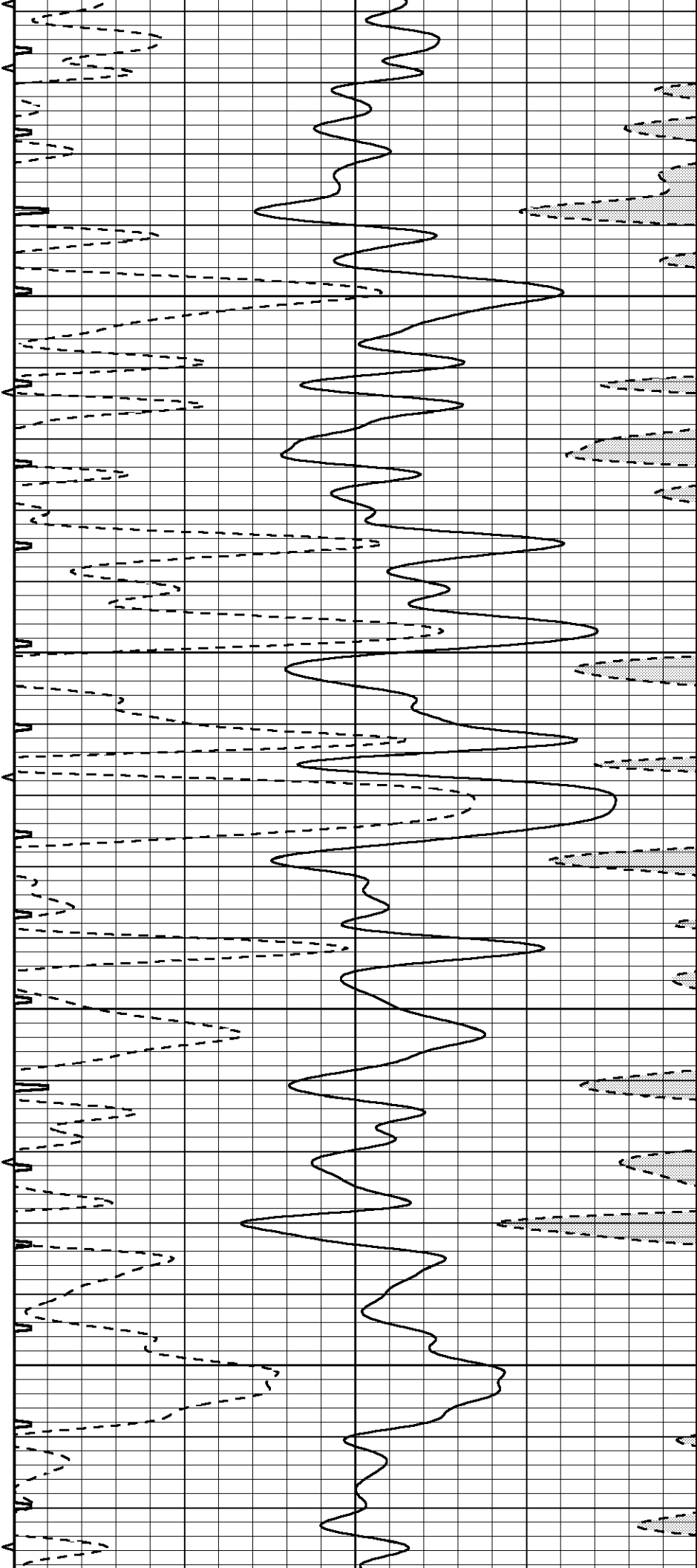


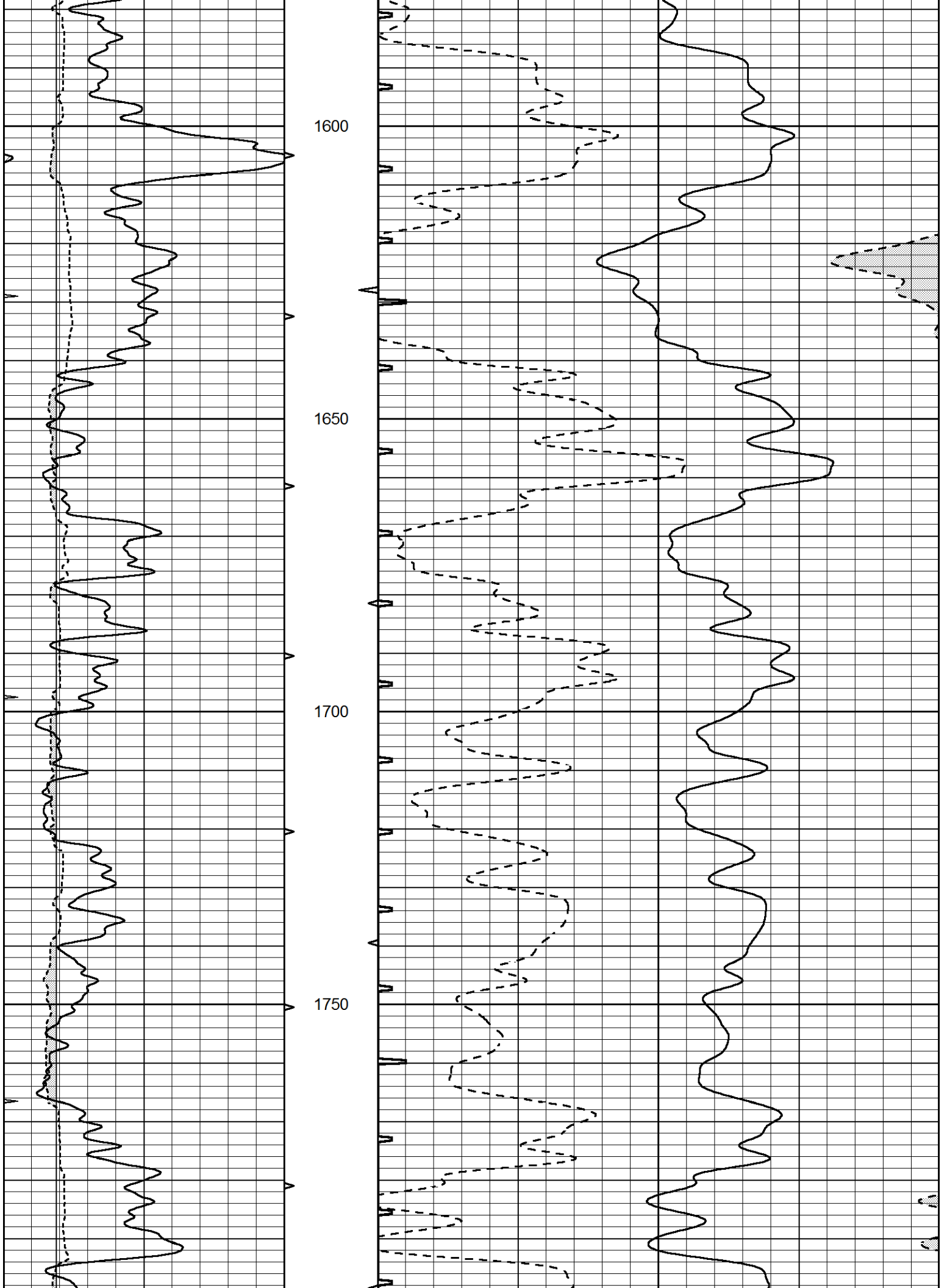
1400

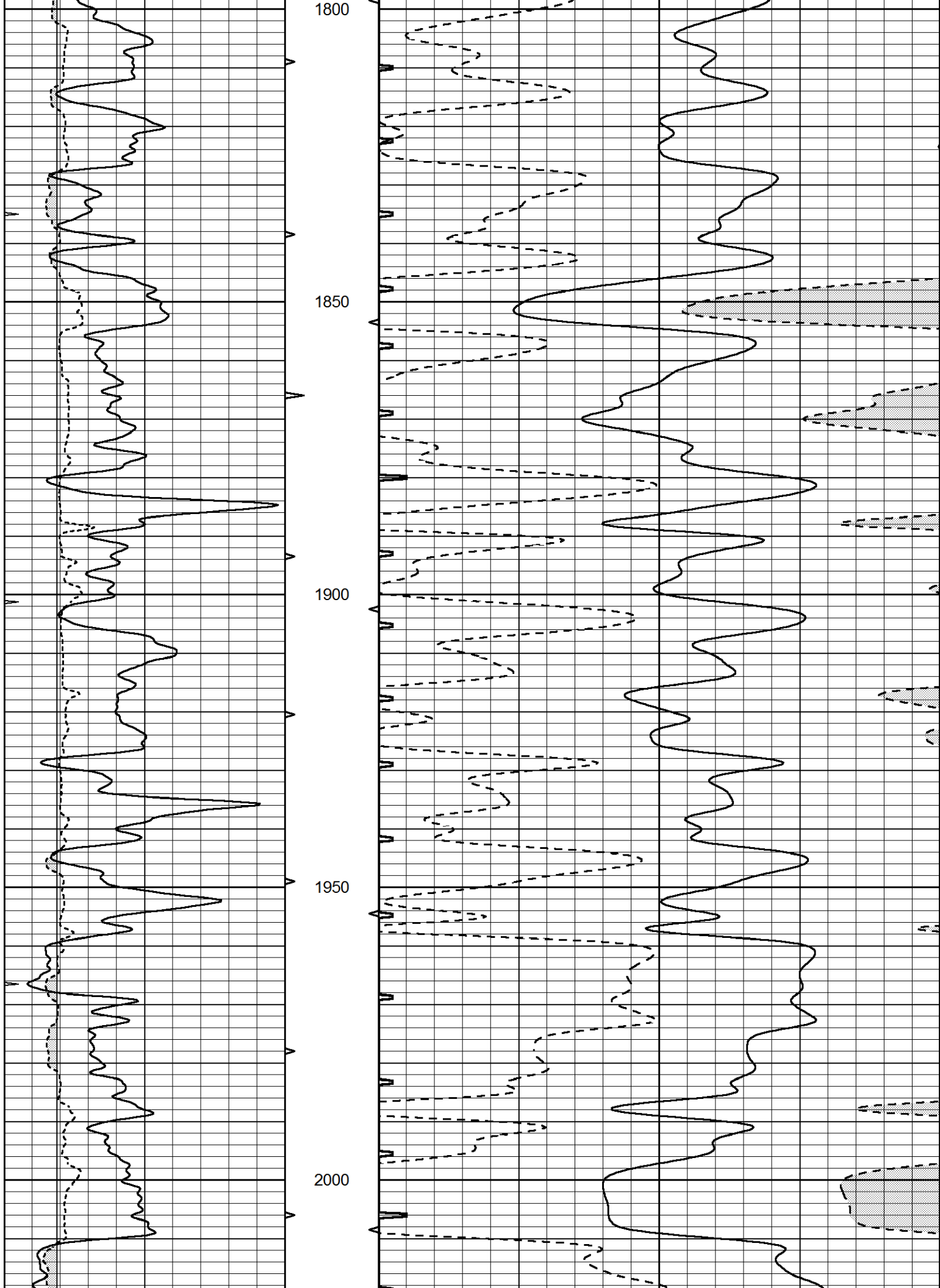
1450

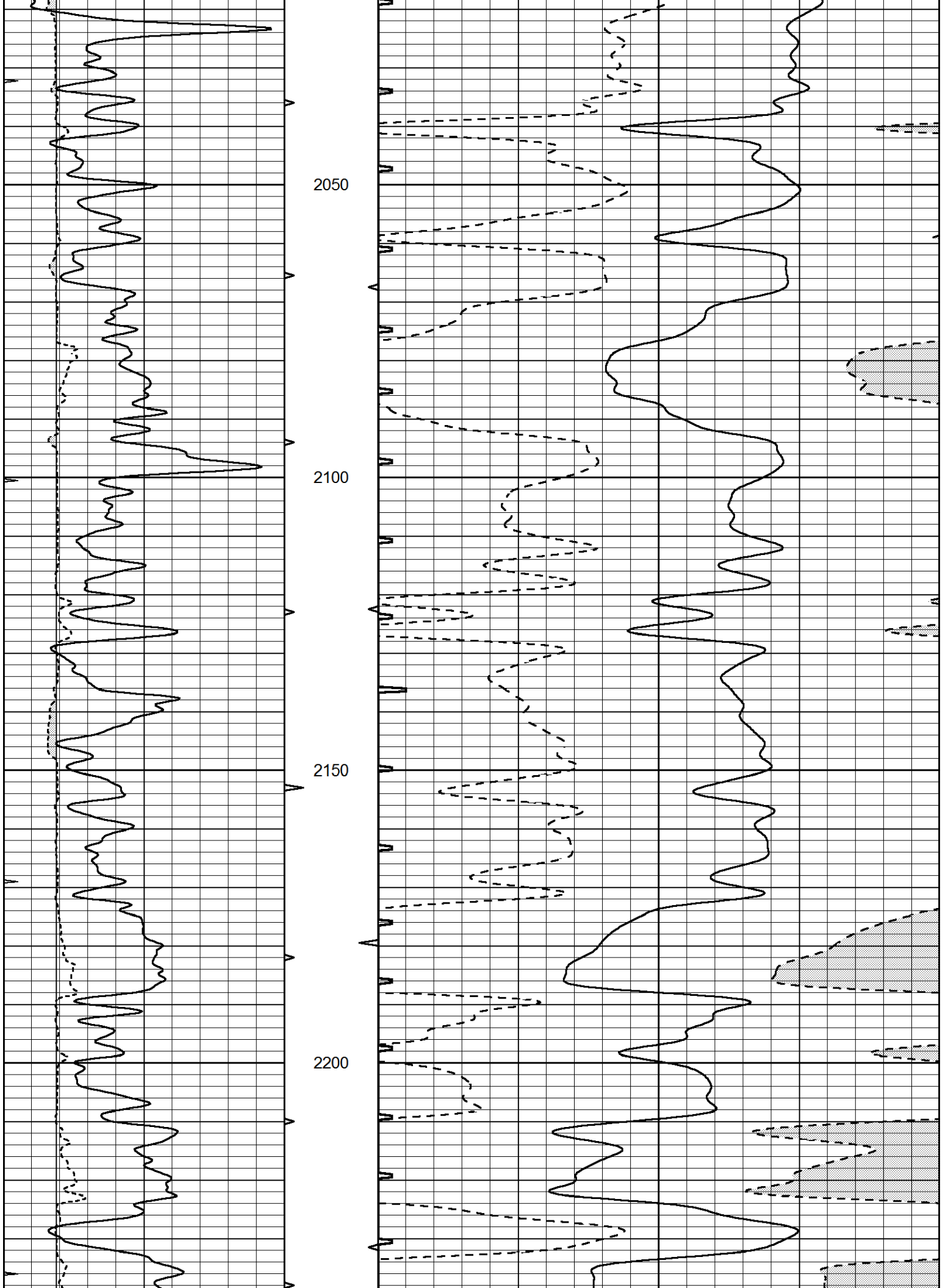
1500

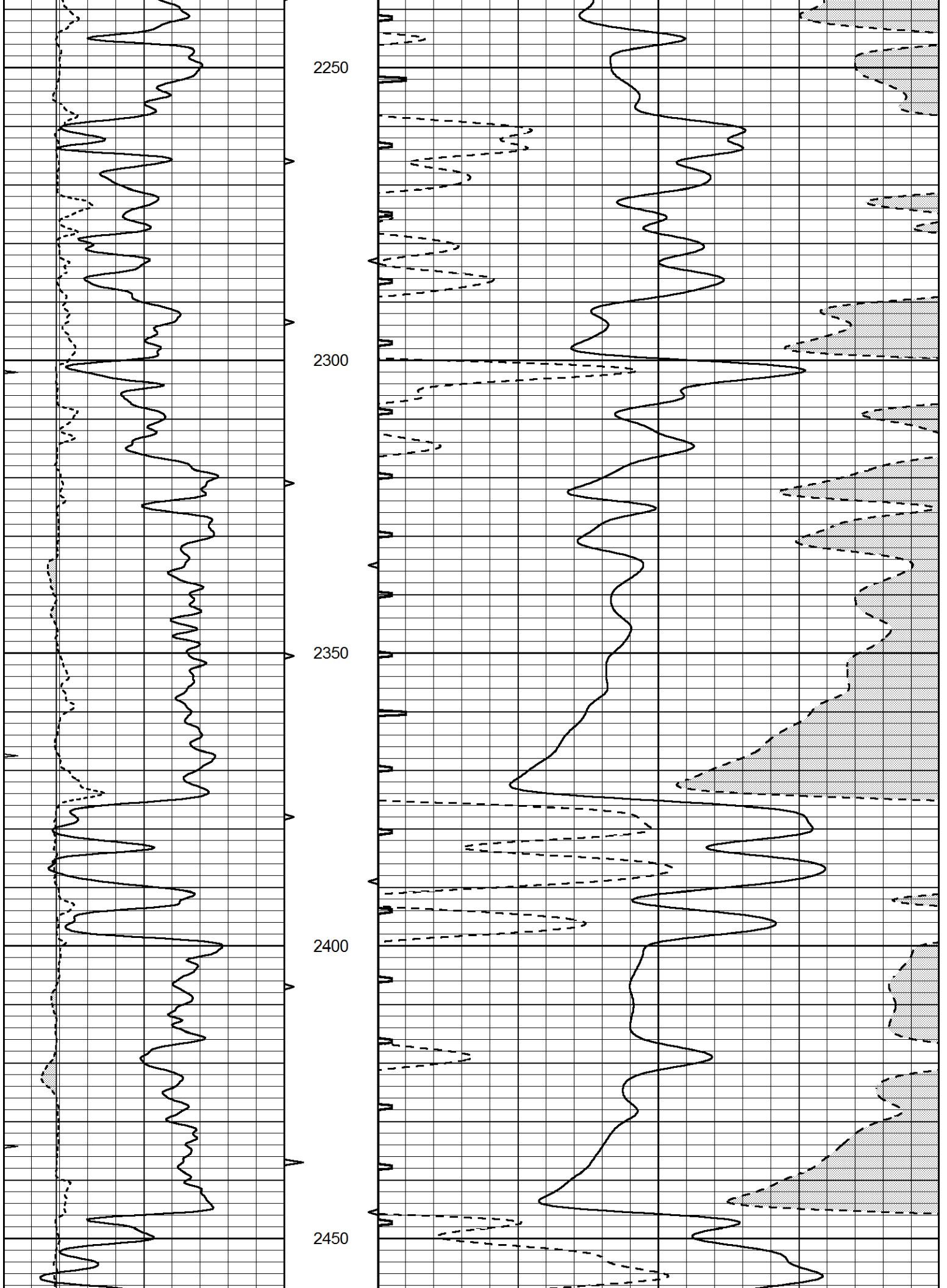
1550

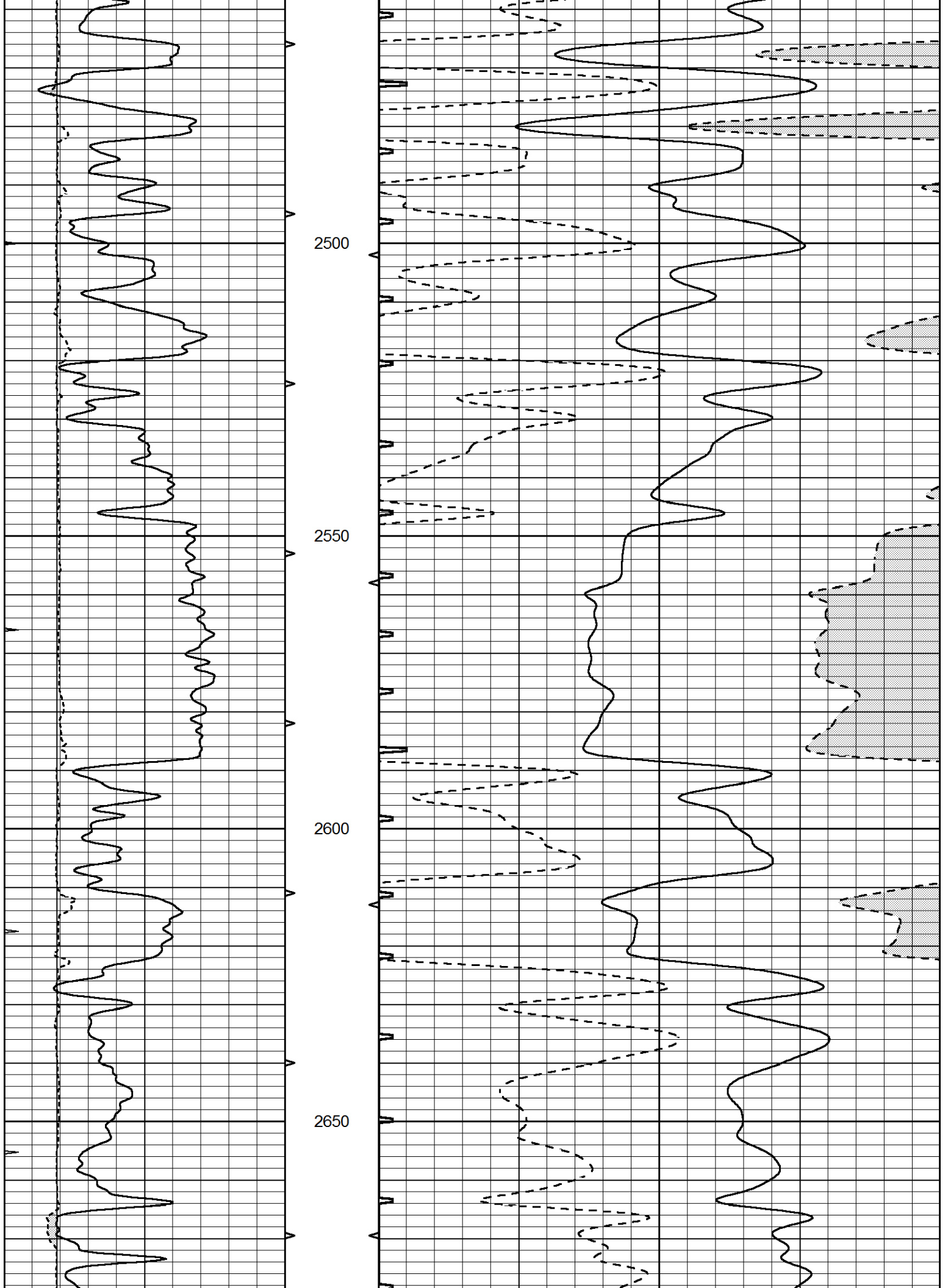


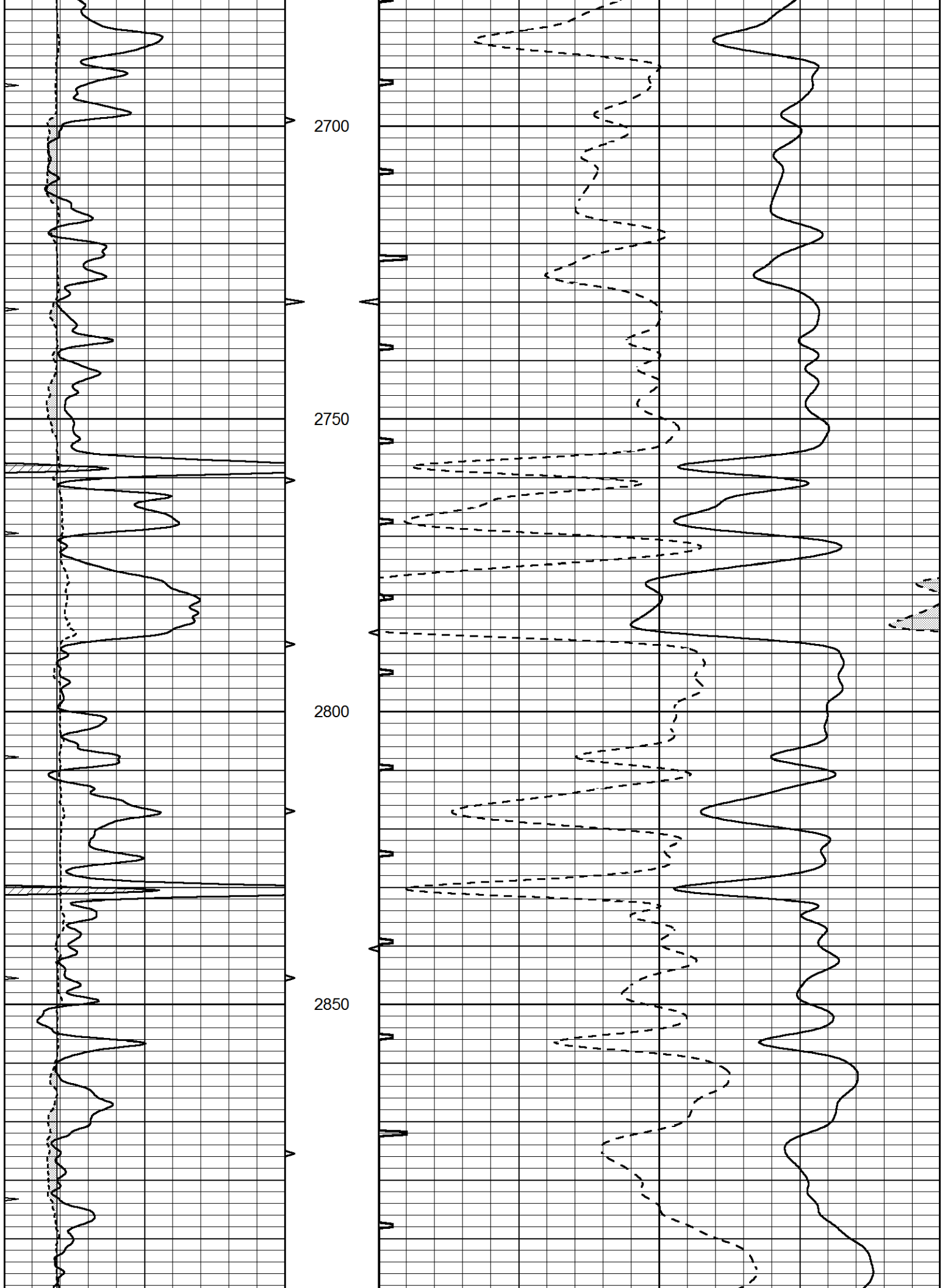


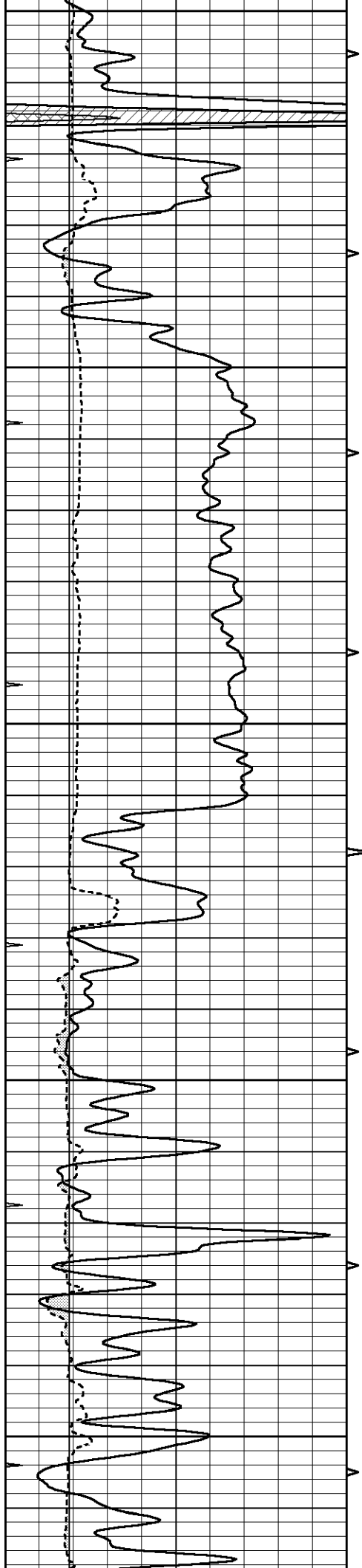












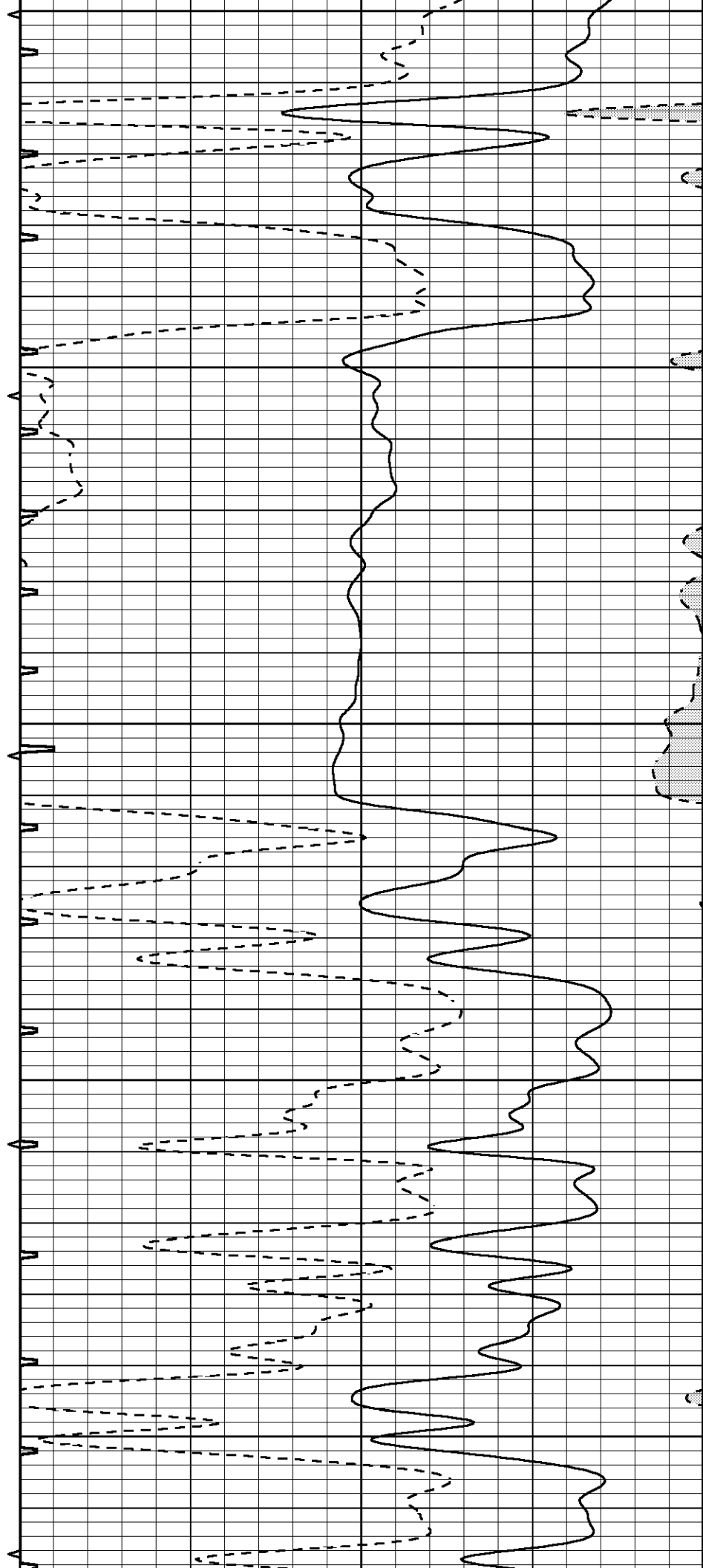
2900

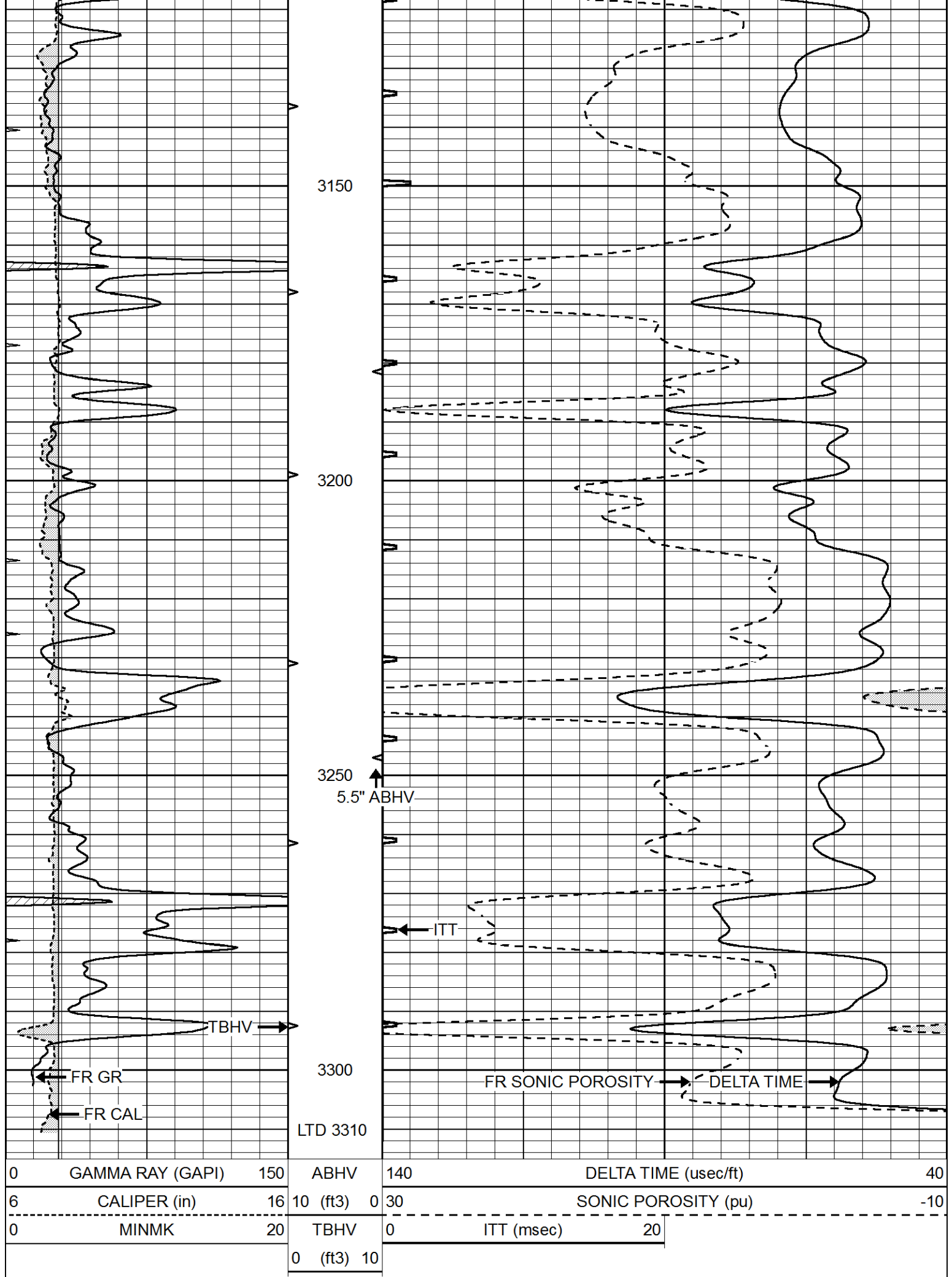
2950

3000

3050

3100





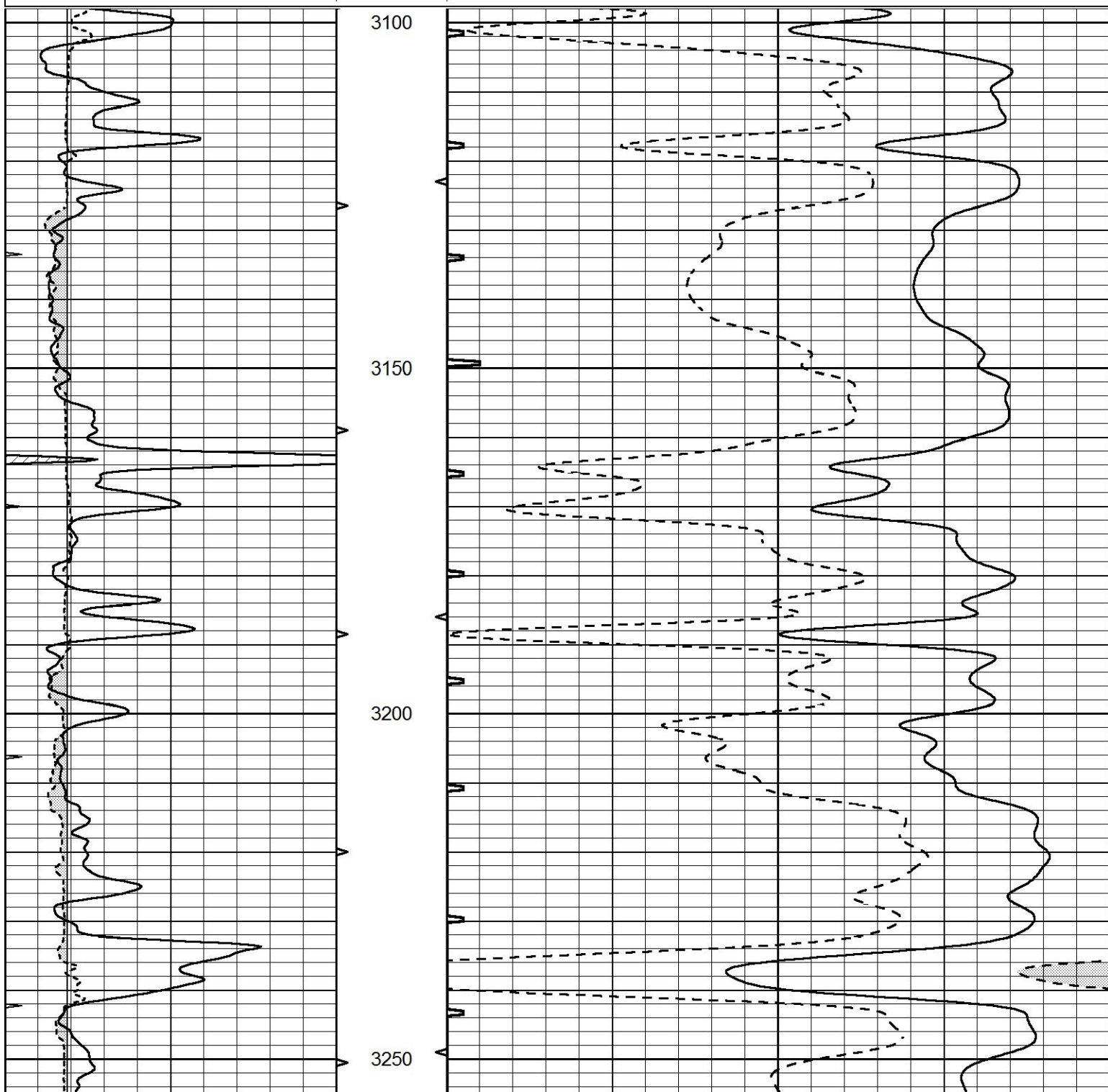
0	GAMMA RAY (GAPI)	150	ABHV	140	DELTA TIME (usec/ft)	40	
6	CALIPER (in)	16	10 (ft3)	0	30	SONIC POROSITY (pu)	-10
0	MINMK	20	TBHV	0	ITT (msec)	20	
			0 (ft3)	10			

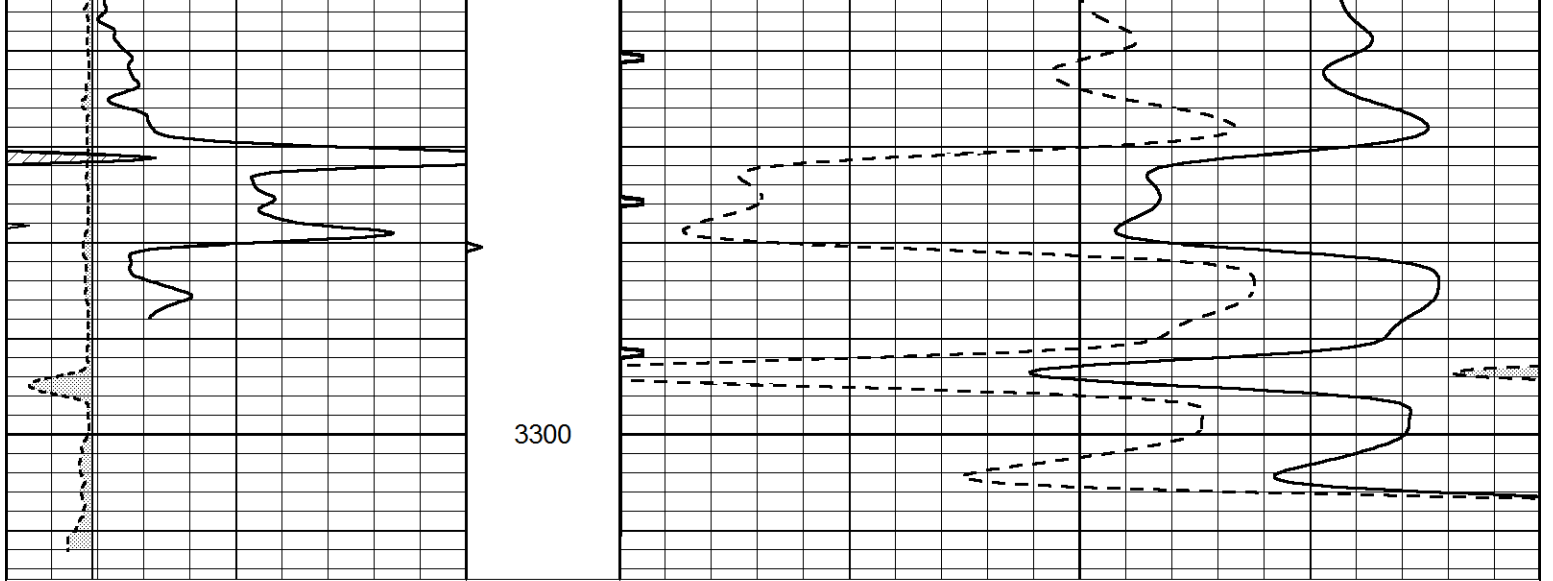


REPEAT SECTION

Database File 6254ddn.db
 Dataset Pathname pass6.2
 Presentation Format slt
 Dataset Creation Tue Feb 22 09:00:10 2022
 Charted by Depth in Feet scaled 1:240

0	GAMMA RAY (GAPI)	150	ABHV	140	DELTA TIME (usec/ft)	40	
6	CALIPER (in)	16	10 (ft3)	0	30	SONIC POROSITY (pu)	-10
0	MINMK	20	TBHV	0	ITT (msec)	20	
			0 (ft3)	10			





0	GAMMA RAY (GAPI)	150	ABHV	140	DELTA TIME (usec/ft)	40
6	CALIPER (in)	16	10 (ft3) 0	30	SONIC POROSITY (pu)	-10
0	MINMK	20	TBHV	0	ITT (msec)	20
			0 (ft3) 10			