

MICRO LOG



Company RJM COMPANY  
 Well DISQUE #2  
 Field KRAFT - PRUSA  
 County BARTON State KANSAS

Location: API #: 15-009-26332-0000  
 330' FNL & 1500' FEL  
 E/2 - NE - NW - NE  
 SEC 9 TWP 17S RGE 11W  
 Permanent Datum GROUND LEVEL Elevation 1860  
 Log Measured From KELLY BUSHING 10' A.G.L.  
 Drilling Measured From KELLY BUSHING  
 Other Services CDL/CNL DIL/SON  
 Elevation K.B. 1870 D.F. 1868 G.L. 1860

Date	2/22/22
Run Number	TWO
Depth Driller	3308
Depth Logger	3310
Bottom Logged Interval	3294
Top Log Interval	2600
Casing Driller	8 5/8"@356'
Casing Logger	356
Bit Size	7 7/8"
Type Fluid in Hole	CHEMICAL MUD
Density / Viscosity	9.1/44
PH / Fluid Loss	9.5/9.2
Source of Sample	FLOWLINE
Rm @ Meas. Temp	.750@45F
Rmf @ Meas. Temp	.563@45F
Rmc @ Meas. Temp	.900@45F
Source of Rmf / Rmc	MEASUREMENT
Rm @ BHT	.307@110F
Time Circulation Stopped	9.5 HOURS
Time Logger on Bottom	110F
Maximum Recorded Temperature	6:30 A.M.
Equipment Number	922339
Location	HAYS, KANSAS
Recorded By	JEFF LUEBBERS
Witnessed By	STEVE MURPHY

<<< Fold Here >>>

All interpretations are opinions based on inferences from electrical or other measurements and we cannot and do not guarantee the accuracy or correctness of any interpretation, and we shall not, except in the case of gross or willful negligence on our part, be liable or responsible for any loss, costs, damages, or expenses incurred or sustained by anyone resulting from any interpretation made by any of our officers, agents or employees. These interpretations are also subject to our general terms and conditions set out in our current Price Schedule.

15-009-26332-0000 Comments

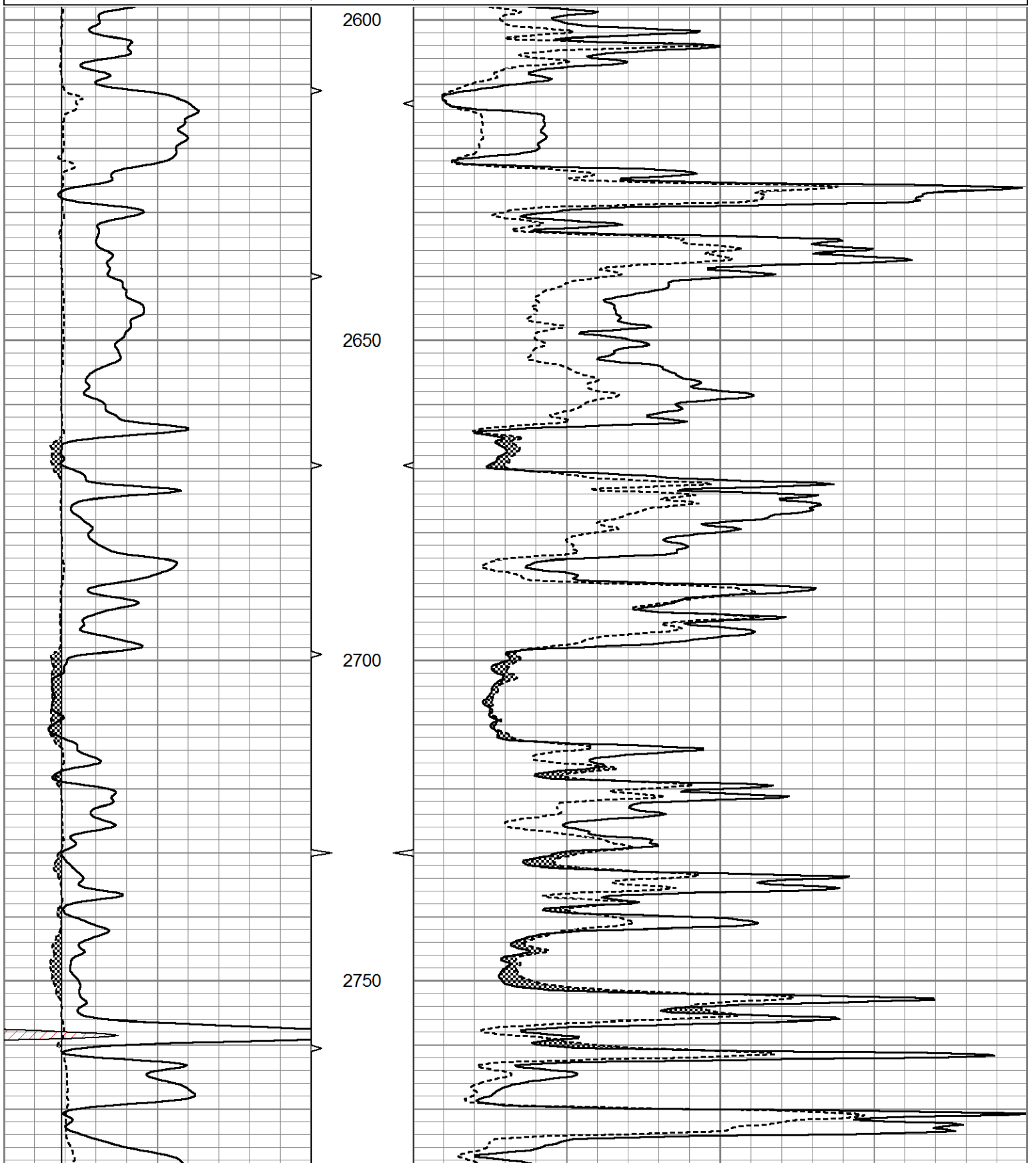
THANK YOU FOR USING ELI WIRELINE HAYS, KANSAS (785) 628-6395  
 DIRECTIONS  
 CLAFLIN, KS., 5N. ON BLKTOP, 1/2W., S. INTO

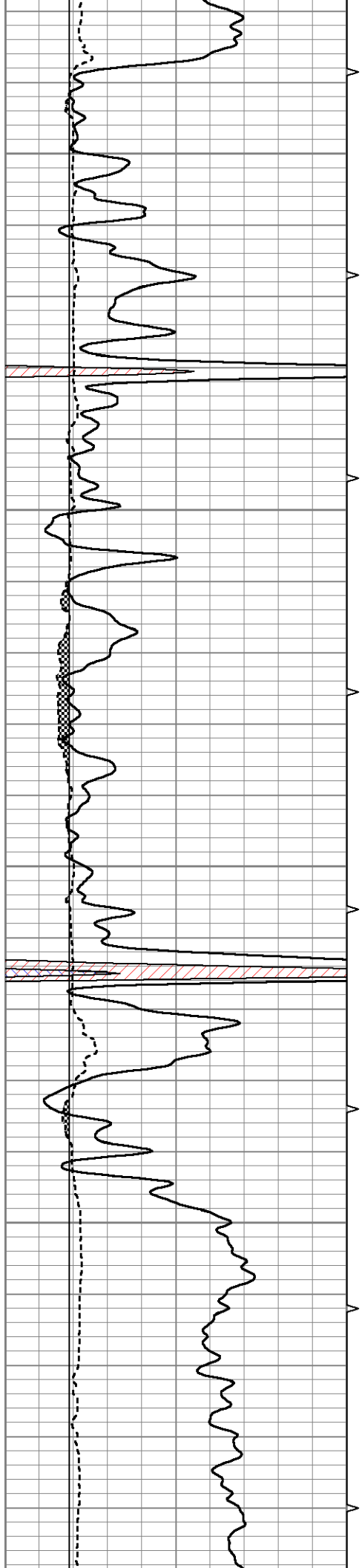


MAIN SECTION

Database File 6254ddn.db  
 Dataset Pathname pass7.2  
 Presentation Format micro  
 Dataset Creation Tue Feb 22 09:26:58 2022  
 Charted by Depth in Feet scaled 1:240

0	GR (GAPI)	150	ABHV	0	MEL20 (Ohm-m)	40
6	MELCAL (in)	16	10 (ft3)	0	MEL15 (Ohm-m)	40
			ABHV			
			0 (ft3)	10		



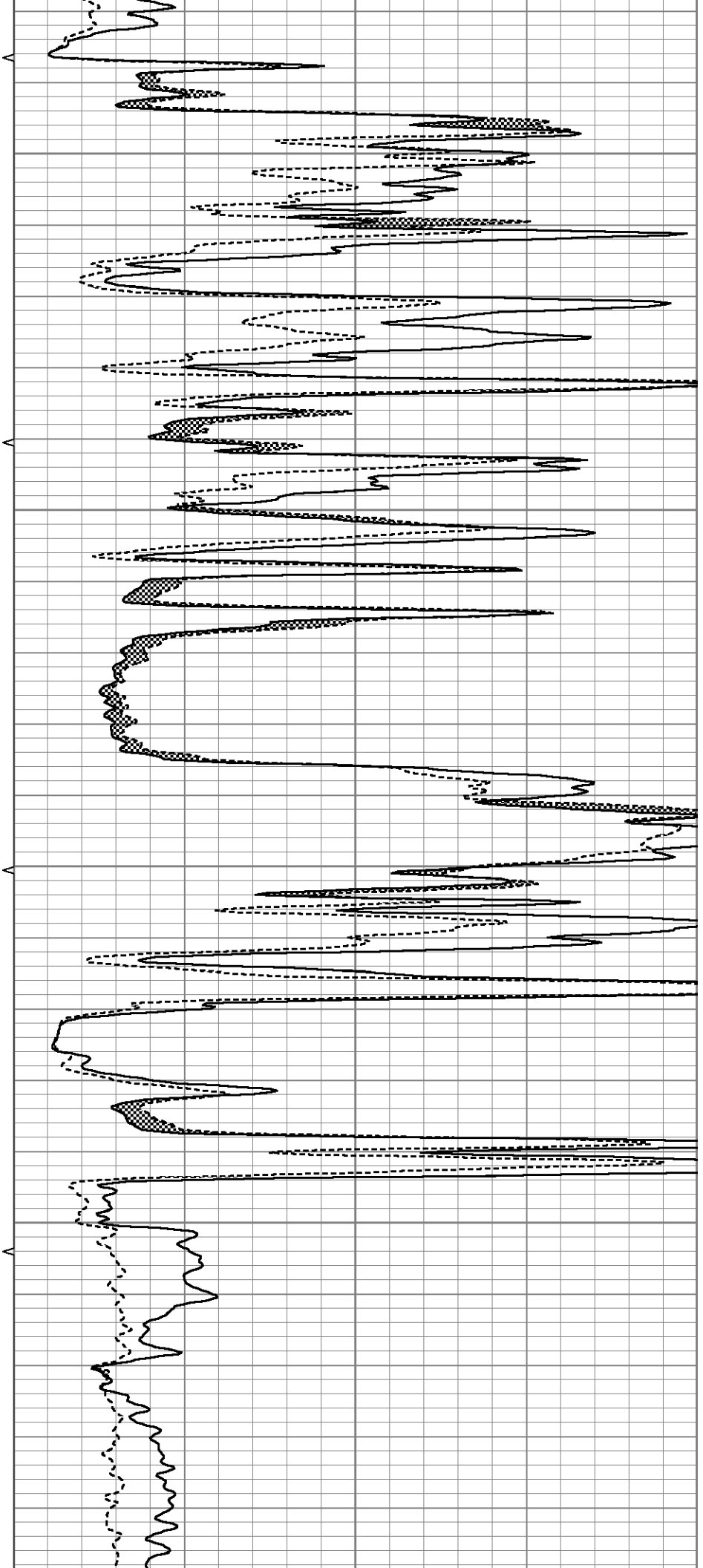


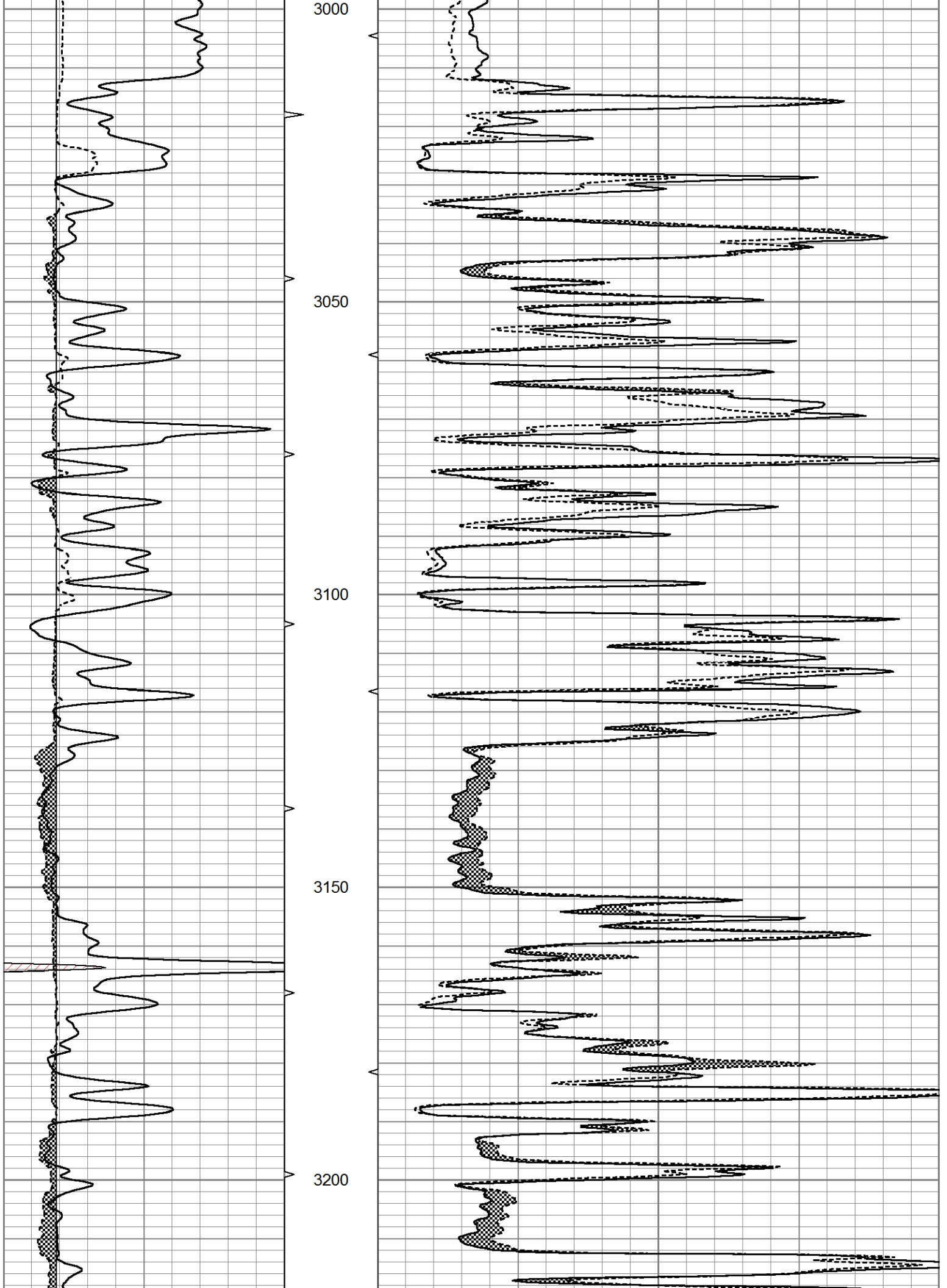
2800

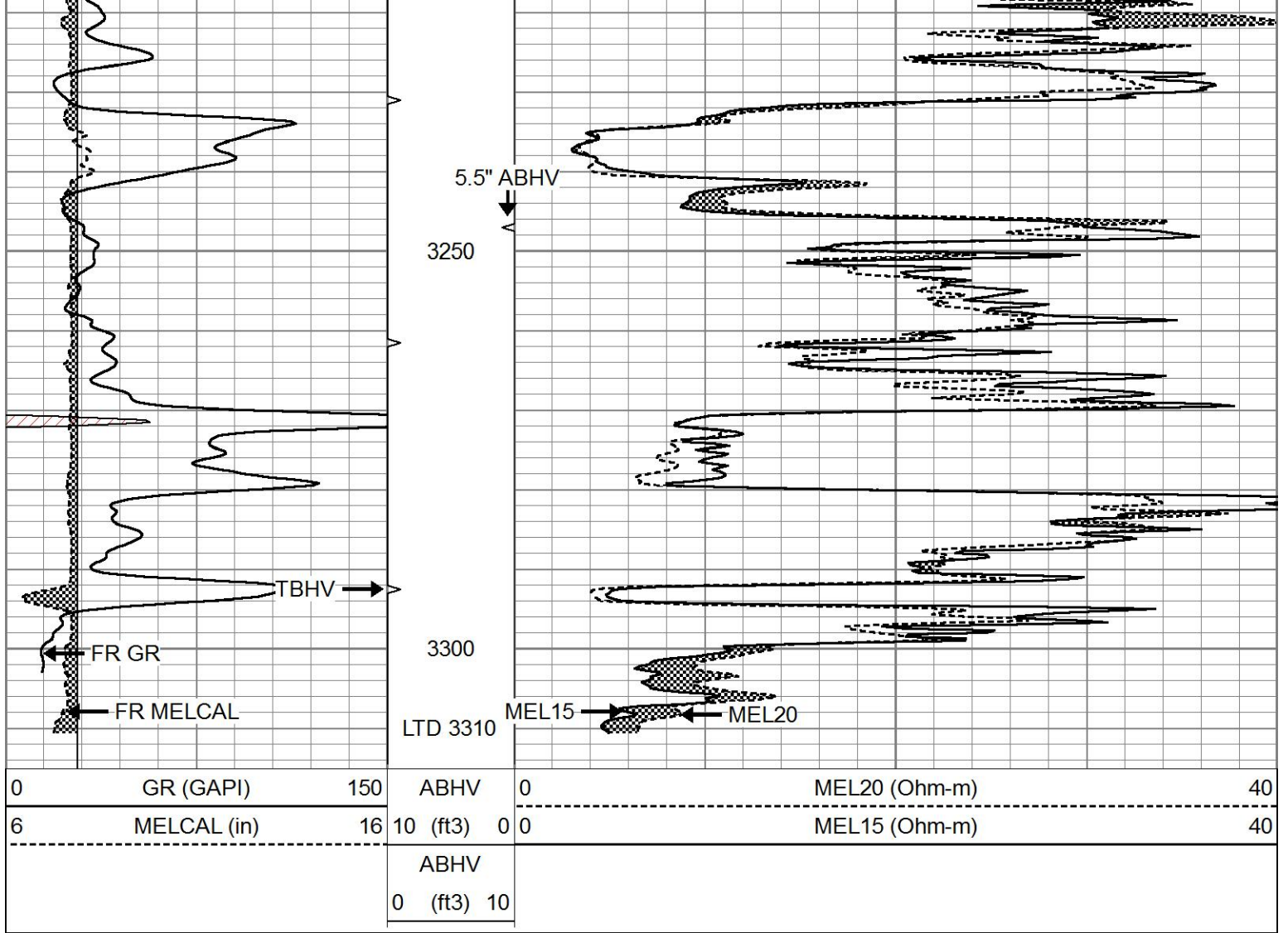
2850

2900

2950



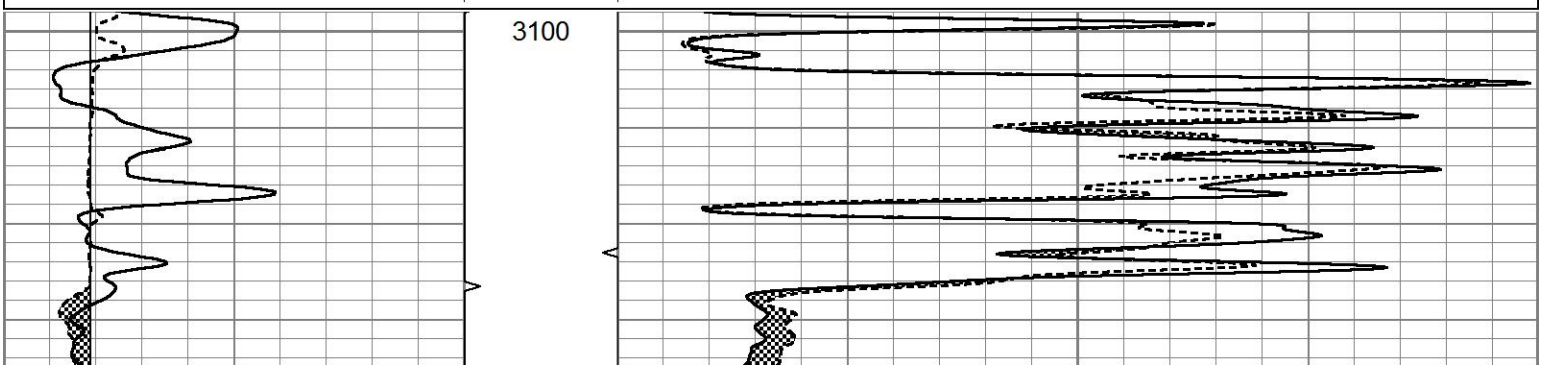


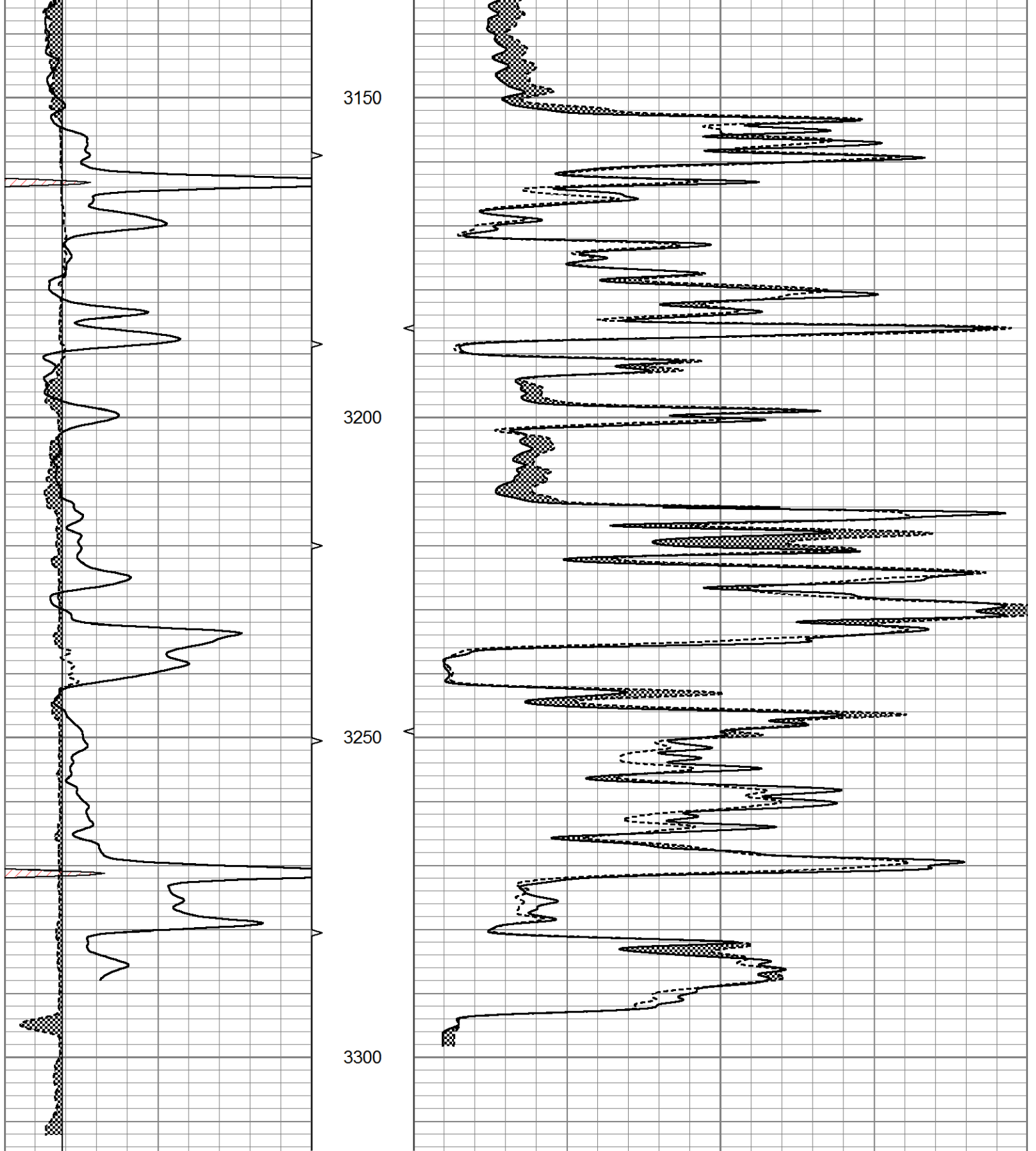


# REPEAT SECTION

Database File 6254ddn.db  
 Dataset Pathname pass6.2  
 Presentation Format micro  
 Dataset Creation Tue Feb 22 09:00:10 2022  
 Charted by Depth in Feet scaled 1:240

0	GR (GAPI)	150	ABHV	0	MEL20 (Ohm-m)	40
6	MELCAL (in)	16	10 (ft3) 0 0	0	MEL15 (Ohm-m)	40
			ABHV			
			0 (ft3) 10			





0	GR (GAPI)	150	ABHV	0	MEL20 (Ohm-m)	40
6	MELCAL (in)	16	10 (ft3)	0	MEL15 (Ohm-m)	40
			ABHV			
			0 (ft3)	10		

Calibration Report

Database File 6254ddn.db  
 Dataset Pathname pass7.2  
 Dataset Creation Tue Feb 22 09:26:58 2022

MICRO Calibration Report

Serial Number: 070911  
 Tool Model: ProbeN  
 Performed: Tue Feb 22 07:14:24 2022

Caliper Calibration: Gain=3.878      Offset=1.408

	Low Cal	High Cal
References	8.000	14.000
Readings	1.700	3.247

1.5" Calibration: Gain=35.000      Offset=0.500

	Low Cal	High Cal
References	0.000	20.000
Readings	0.001	1.291

2" Calibration: Gain=35.000      Offset=0.500

	Low Cal	High Cal
References	0.000	20.000
Readings	0.003	1.103

Gamma Ray Calibration Report

Serial Number: 070558  
 Tool Model: OPEN\_GR  
 Performed: Tue Feb 22 07:33:06 2022

Calibrator Value: 1.0      GAPI

Background Reading: 0.0      cps  
 Calibrator Reading: 1.0      cps

Sensitivity: 0.2800      GAPI/cps