



**COMPENSATED
DENSITY / NEUTRON
LOG**

Company RJM COMPANY
Well DISQUE #2
Field KRAFT - PRUSA
County BARTON State KANSAS

Location: API #: 15-009-26332-0000
330' FNL & 1500' FEL
E/2 - NE - NW - NE
SEC 9 TWP 17S RGE 11W
Permanent Datum GROUND LEVEL Elevation 1860
Log Measured From KELLY BUSHING 10' A.G.L.
Drilling Measured From KELLY BUSHING
Other Services
DILMEL
SONIC
Elevation
K.B. 1870
D.F. 1868
G.L. 1860

Date	2/22/22
Run Number	ONE
Depth Driller	3308
Depth Logger	3310
Bottom Logged Interval	3286
Top Log Interval	2600
Casing Driller	8 5/8"@356'
Casing Logger	356
Bit Size	7 7/8"
Type Fluid in Hole	CHEMICAL MUD
Density / Viscosity	9.1/44
pH / Fluid Loss	9.5/9.2
Source of Sample	FLOWLINE
Rm @ Meas. Temp	.750@45F
Rmf @ Meas. Temp	.563@45F
Rmc @ Meas. Temp	.900@45F
Source of Rmf / Rmc	MEASUREMENT
Rm @ BHT	.307@110F
Time Circulation Stopped	8 HOURS
Time Logger on Bottom	110F
Maximum Recorded Temperature	4:30 A.M.
Equipment Number	922339
Location	HAYS, KANSAS
Recorded By	JEFF LUEBBERS
Witnessed By	STEVE MURPHY

<<< Fold Here >>>

All interpretations are opinions based on inferences from electrical or other measurements and we cannot and do not guarantee the accuracy or correctness of any interpretation, and we shall not, except in the case of gross or willful negligence on our part, be liable or responsible for any loss, costs, damages, or expenses incurred or sustained by anyone resulting from any interpretation made by any of our officers, agents or employees. These interpretations are also subject to our general terms and conditions set out in our current Price Schedule.

15-009-26332-0000 Comments

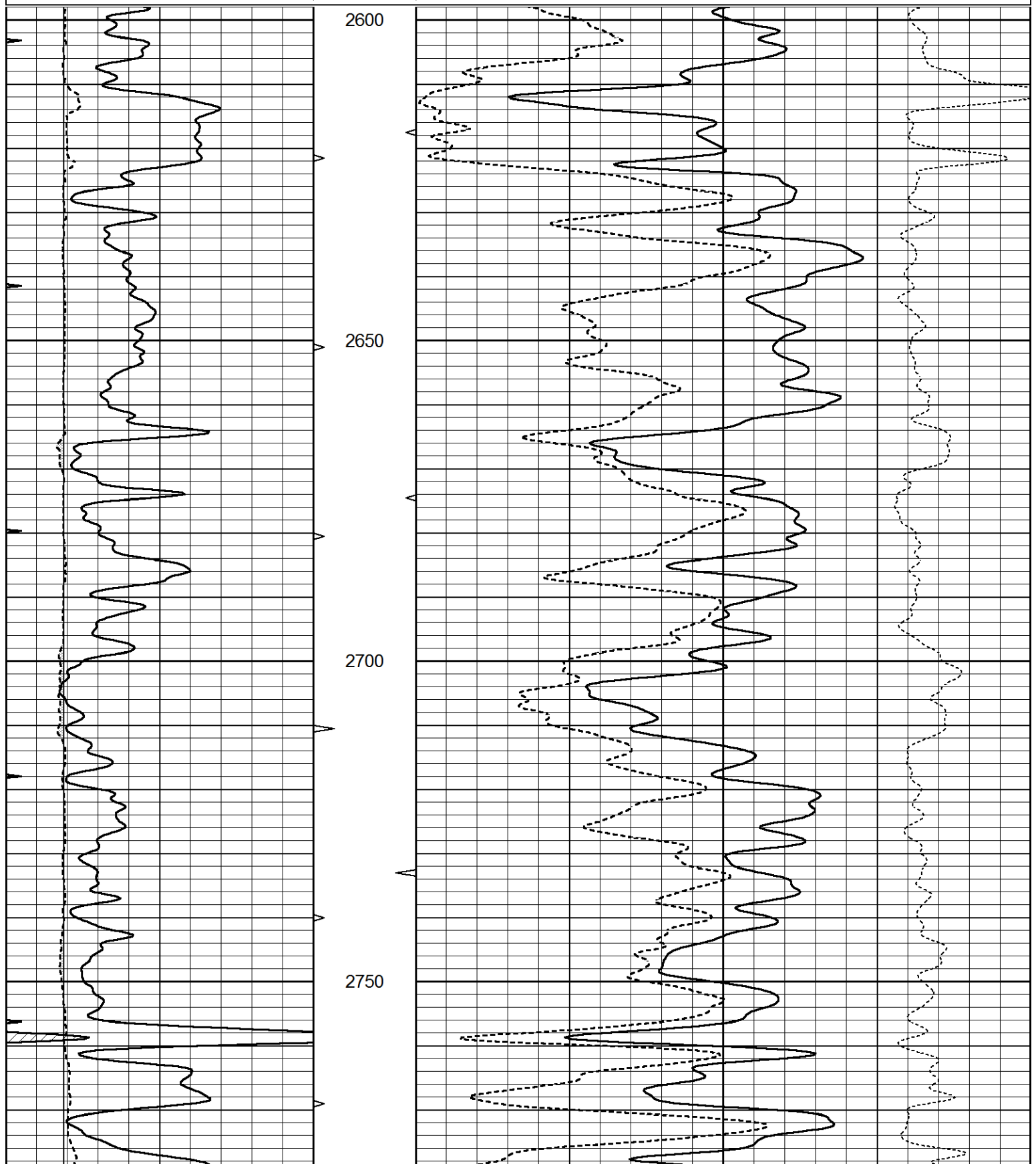
THANK YOU FOR USING ELI WIRELINE HAYS, KANSAS (785) 628-6395
DIRECTIONS
CLAFLIN, KS., 5N. ON BLKTOP, 1/2W., S. INTO

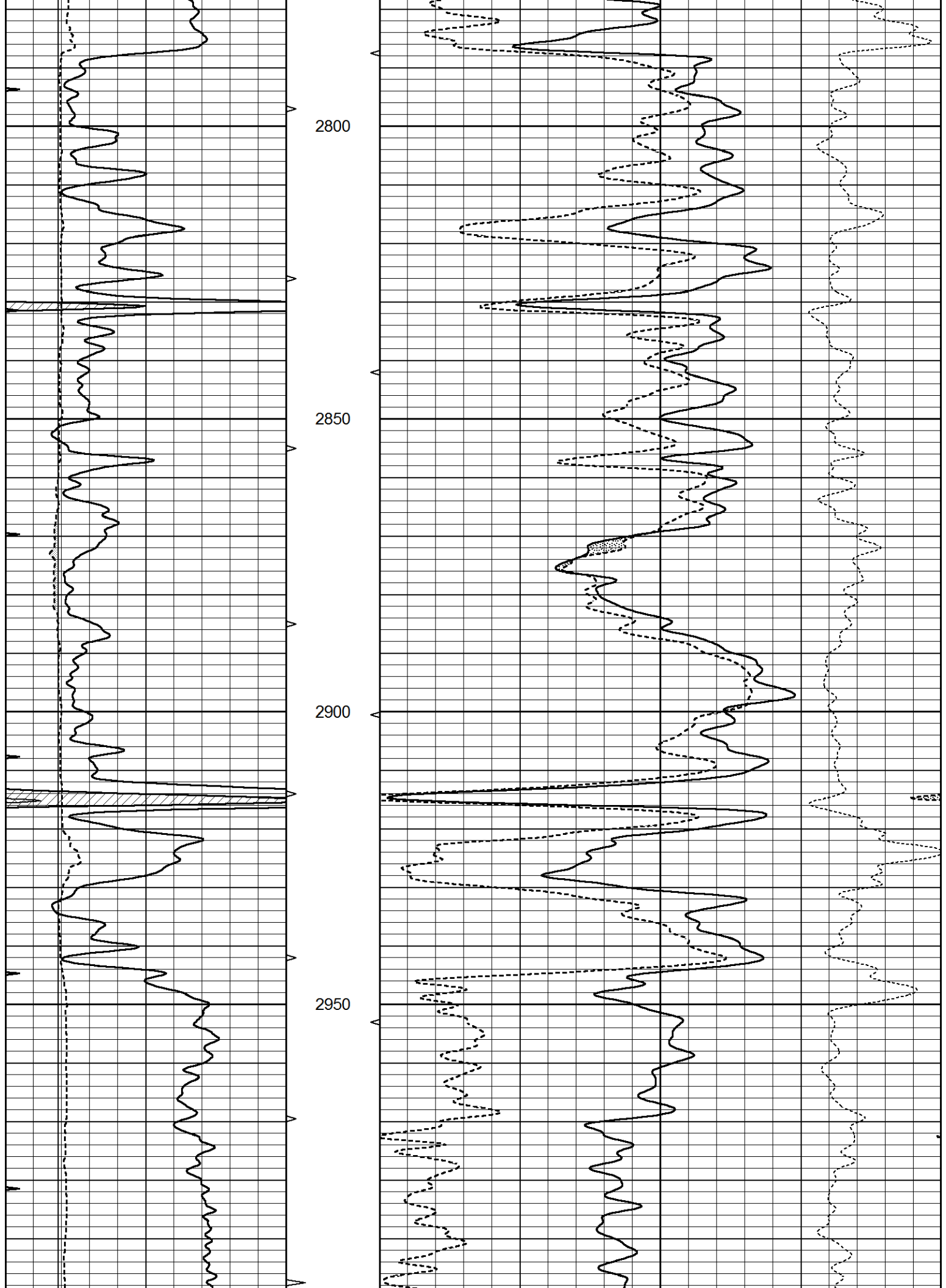


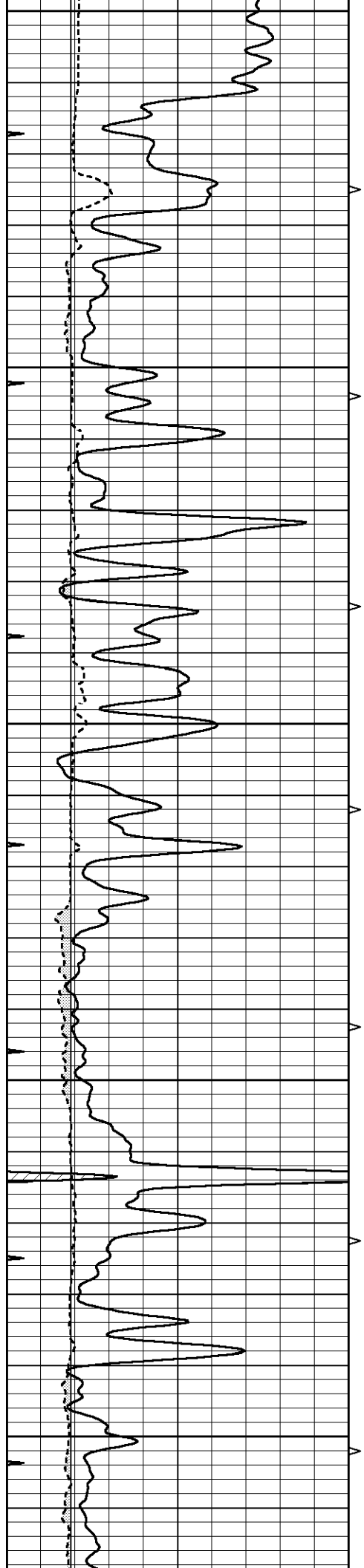
MAIN SECTION

Database File 6254ddn.db
 Dataset Pathname pass3.1M
 Presentation Format den_neu
 Dataset Creation Tue Feb 22 06:18:17 2022
 Charted by Depth in Feet scaled 1:240

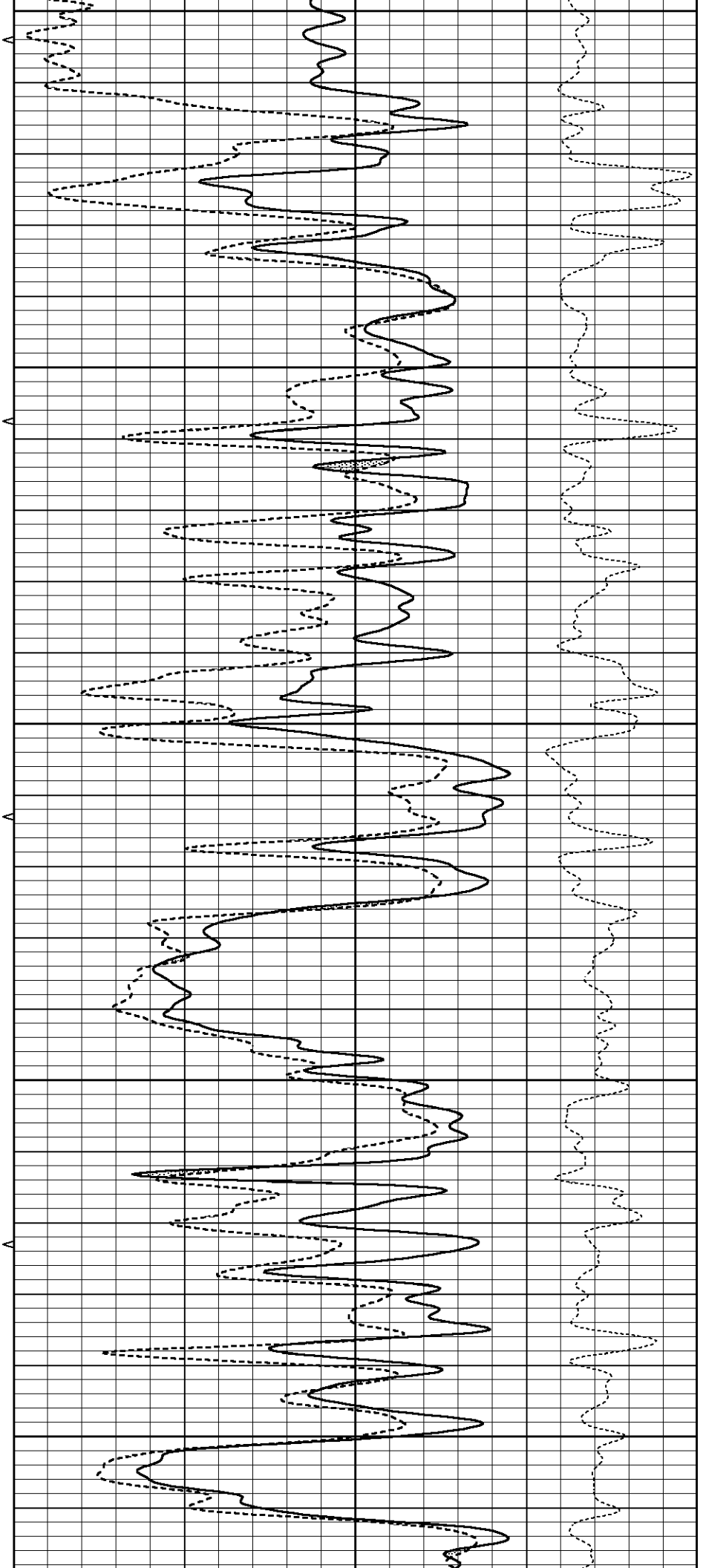
0	GAMMA RAY (GAPI)	150	ABHV	30	COMPENSATED DENSITY (pu)	-10
6	DCAL (in)	16	10 (ft3)	0	COMPENSATED NEUTRON (pu)	-10
0	MINMK	20	TBHV		-0.25 CORRECTION (g/cc)	0.25
			0 (ft3)	10		

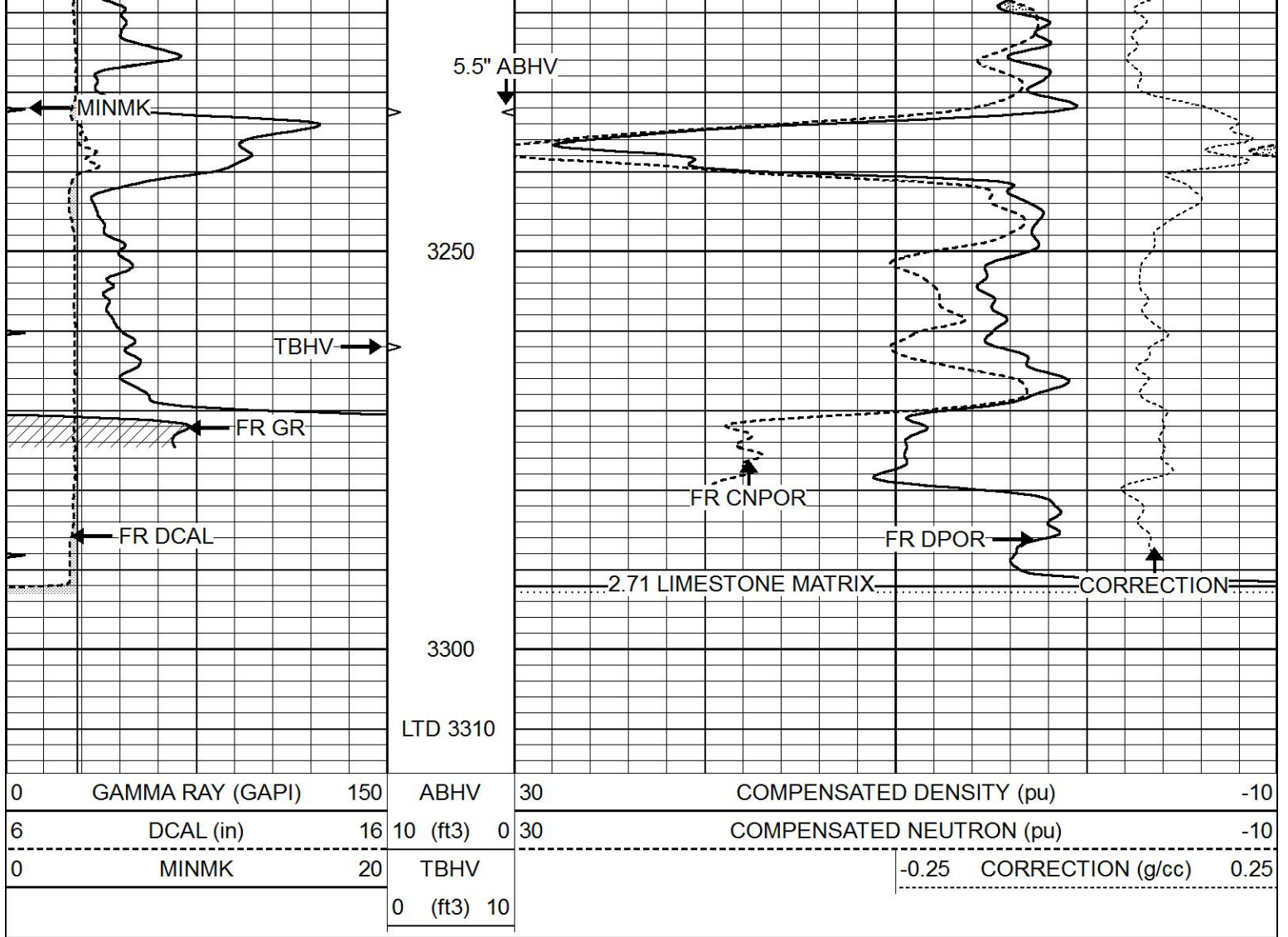






3000
3050
3100
3150
3200

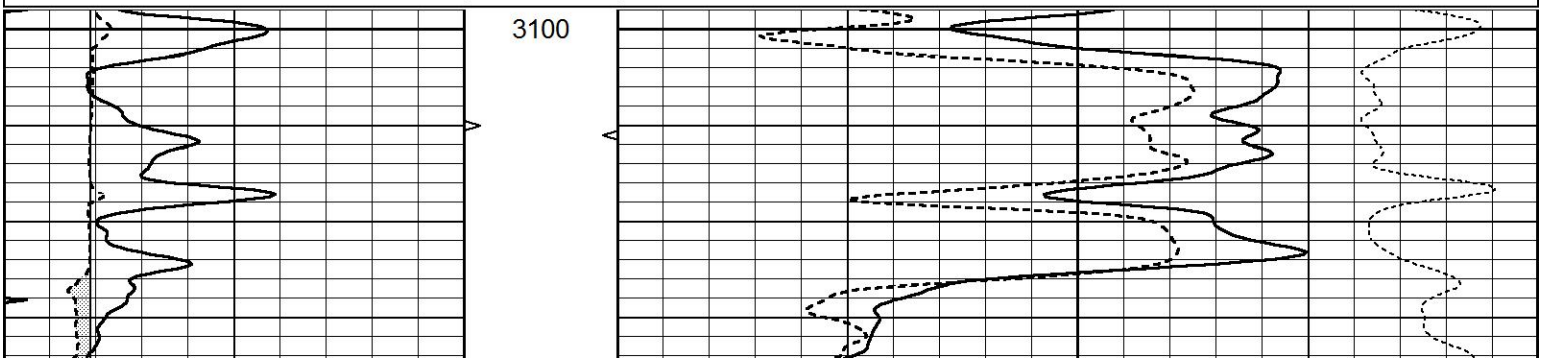


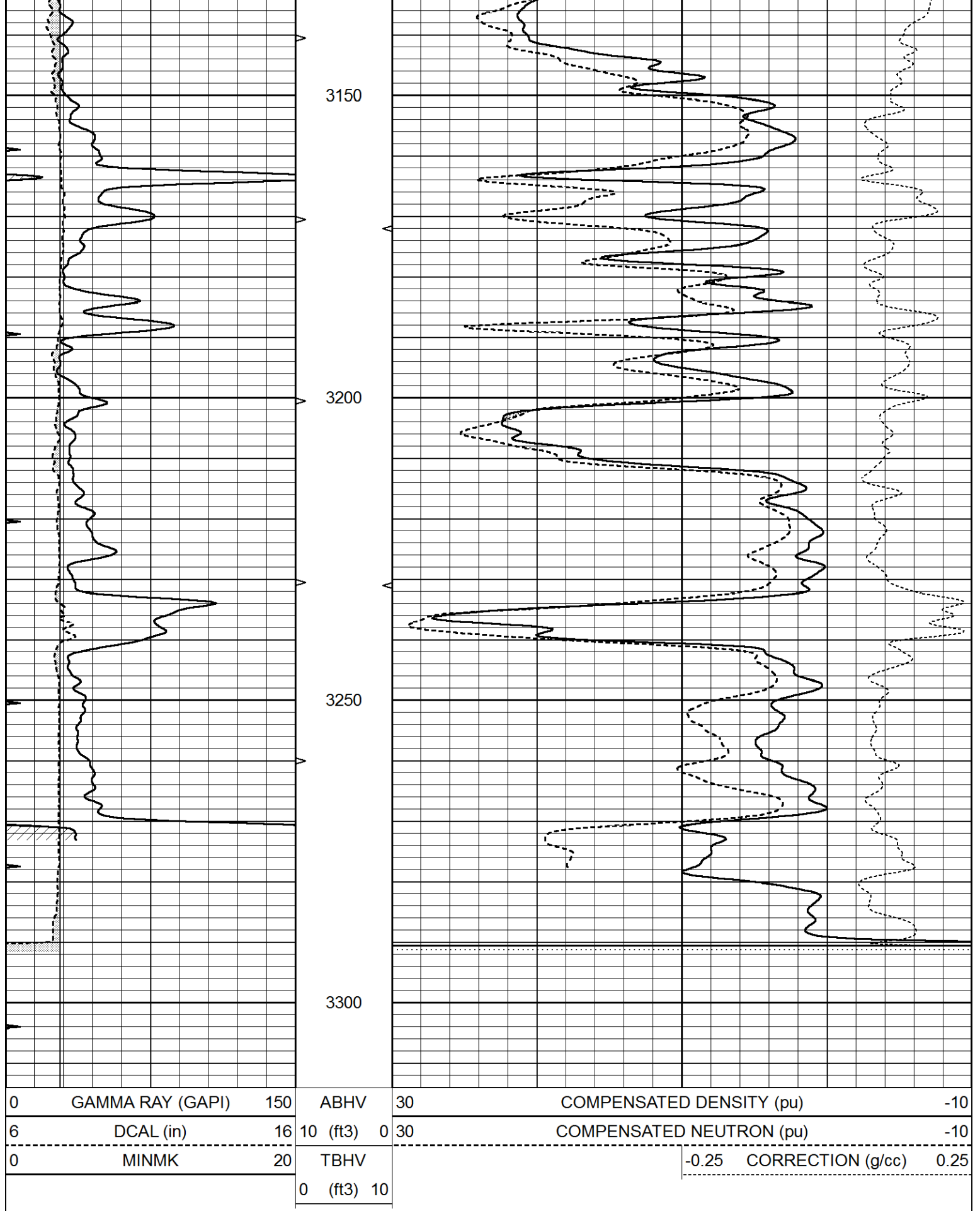


REPEAT SECTION

Database File 6254ddn.db
 Dataset Pathname pass2.1R
 Presentation Format den_neu
 Dataset Creation Tue Feb 22 06:24:42 2022
 Charted by Depth in Feet scaled 1:240

0	GAMMA RAY (GAPI)	150	ABHV	30	COMPENSATED DENSITY (pu)	-10	
6	DCAL (in)	16	10 (ft3)	0 30	COMPENSATED NEUTRON (pu)	-10	
0	MINMK	20	TBHV		-0.25	CORRECTION (g/cc)	0.25
			0 (ft3)	10			





Calibration Report

Database File 6254ddn.db
 Dataset Pathname pass3.1M
 Dataset Creation Tue Feb 22 06:18:17 2022

Dual Induction Calibration Report

Serial-Model:	PROBE9-DILG
Surface Cal Performed:	Mon Feb 21 18:55:19 2022
Downhole Cal Performed:	Wed Mar 11 11:31:19 2020
After Survey Verification Performed:	Wed Mar 11 11:31:22 2020

Surface Calibration

Loop:	Readings			References			Results	
	Air	Loop	V	Air	Loop		m	b
Deep	-0.014	0.629	V	0.000	400.000	mmho/m	720.000	-15.000
Medium	0.039	0.728	V	0.000	464.000	mmho/m	720.000	-22.000
Internal:	Zero	Cal		Zero	Cal		m	b
Deep	0.011	0.610	V	0.000	400.000	mmho/m	667.135	-7.256
Medium	0.005	0.712	V	0.000	464.000	mmho/m	655.677	-3.102

Downhole Calibration

	Readings			References			Results	
	Zero	Cal		Zero	Cal		m'	b'
Deep	0.000	0.000	mmho/m	14.508	388.384	mmho/m	1.000	0.000
Medium	0.000	0.000	mmho/m	166.367	504.400	mmho/m	1.000	0.000
LL3		7.500	V		1400.000	Ohm-m		
		0.000	V		20.000	Ohm-m		
		-7.200	V		4000.000	mmho-m		

After Survey Verification

	Readings			Targets			Results	
	Zero	Cal		Zero	Cal		m'	b'
Deep	0.000	0.000	mmho/m	0.000	0.000	mmho/m	0.000	0.000
Medium	0.000	0.000	mmho/m	0.000	0.000	mmho/m	0.000	0.000
LL3		1.000	Ohm-m		1.000	Ohm-m		
		0.000	Ohm-m		0.000	Ohm-m		
		1.000	mmho-m		1.000	mmho-m		

Litho Density Calibration Report

Serial: 001 Model: PRB

Master Calibration

Performed Mon May 11 11:33:29 2020

	Background	Magnesium	Aluminum	Aluminum+Fe	
Window 1	1593.8	10211.9	3449.0	3132.1	cps
Window 2	1486.7	8824.2	3065.6	2829.4	cps
Window 3	1206.8	4705.7	1944.6	1871.7	cps
Window 4	361.0	367.9	364.8	363.1	cps
Long Space	0.0	7337.5	1578.9	1342.7	cps
Short Space	2.7	2543.4	1657.9	1382.7	cps
Rho		1.7100	2.5900	0.0000	g/cc
Pe		2.0000	2.7500	5.7900	
Rib Angle	: 44.4	Rib Slope	: 0.980	Density/Spine Ratio	: 0.552
Spine Angle	: 74.4	Spine Slope	: 3.590	Spine Intercept	: -19.2

Before Survey Verification

Performed Wed Dec 31 18:00:00 1969

Window 1	0.0	0.0	0.0	0.0	cps
Window 2	0.0	0.0	0.0	0.0	cps

Window 2	0.0	0.0	0.0	0.0	cps
Window 3	0.0	0.0	0.0	0.0	cps
Window 4	0.0	0.0	0.0	0.0	cps
Long Space	0.0	0.0	0.0	0.0	cps
Short Space	0.0	0.0	0.0	0.0	cps
Measured Rho		0.0000	0.0000	0.0000	g/cc
Measured Correction		0.0000	0.0000	0.0000	g/cc
Measured Pe			0.0000	0.0000	

After Survey Verification

Performed Wed Dec 31 18:00:00 1969

Window 1	0.0	0.0	0.0	0.0	cps
Window 2	0.0	0.0	0.0	0.0	cps
Window 3	0.0	0.0	0.0	0.0	cps
Window 4	0.0	0.0	0.0	0.0	cps
Long Space	0.0	0.0	0.0	0.0	cps
Short Space	0.0	0.0	0.0	0.0	cps
Measured Rho		0.0000	0.0000	0.0000	g/cc
Measured Correction		0.0000	0.0000	0.0000	g/cc
Measured Pe			0.0000	0.0000	

Compensated Neutron Calibration Report

Serial Number: 070808PMC
Tool Model: NABORS

PRE-SURVEY VERIFICATION

Detector	Readings	Measured	Target
Short Space	cps		
Long Space	cps	pu	pu

POST-SURVEY VERIFICATION

Detector	Readings	Measured	Target
Short Space	cps		
Long Space	cps	pu	pu

Gamma Ray Calibration Report

Serial Number: 070558
Tool Model: OPEN_GR
Performed: Sun Feb 20 16:27:35 2022

Calibrator Value: 1.0 GAPI

Background Reading: 0.0 cps
Calibrator Reading: 1.0 cps

Sensitivity: 0.2800 GAPI/cps