



# DUAL INDUCTION LOG

Company RJM COMPANY  
 Well DISQUE #2  
 Field KRAFT - PRUSA  
 County BARTON  
 State KANSAS

Company RJM COMPANY  
 Well DISQUE #2  
 Field KRAFT - PRUSA  
 County BARTON State KANSAS

Location: API #: 15-009-26332-0000  
 330' FNL & 1500' FEL  
 E/2 - NE - NW - NE  
 SEC 9 TWP 17S RGE 11W  
 Permanent Datum GROUND LEVEL Elevation 1860  
 Log Measured From KELLY BUSHING 10' A.G.L.  
 Drilling Measured From KELLY BUSHING  
 Other Services  
 CDL/CNL  
 MEL/SON  
 Elevation  
 K.B. 1870  
 D.F. 1868  
 G.L. 1860

|                              |               |
|------------------------------|---------------|
| Date                         | 2/22/22       |
| Run Number                   | ONE           |
| Depth Driller                | 3308          |
| Depth Logger                 | 3310          |
| Bottom Logged Interval       | 3308          |
| Top Log Interval             | 00            |
| Casing Driller               | 8 5/8"@356'   |
| Casing Logger                | 356           |
| Bit Size                     | 7 7/8"        |
| Type Fluid in Hole           | CHEMICAL MUD  |
| Density / Viscosity          | 9.1/44        |
| pH / Fluid Loss              | 9.5/9.2       |
| Source of Sample             | FLOWLINE      |
| Rm @ Meas. Temp              | .750@45F      |
| Rmf @ Meas. Temp             | .563@45F      |
| Rmc @ Meas. Temp             | .900@45F      |
| Source of Rmf / Rmc          | MEASUREMENT   |
| Rm @ BHT                     | .307@110F     |
| Time Circulation Stopped     | 8 HOURS       |
| Time Logger on Bottom        | 110F          |
| Maximum Recorded Temperature | 4:30 A.M.     |
| Equipment Number             | 922339        |
| Location                     | HAYS, KANSAS  |
| Recorded By                  | JEFF LUEBBERS |
| Witnessed By                 | STEVE MURPHY  |

<<< Fold Here >>>

All interpretations are opinions based on inferences from electrical or other measurements and we cannot and do not guarantee the accuracy or correctness of any interpretation, and we shall not, except in the case of gross or willful negligence on our part, be liable or responsible for any loss, costs, damages, or expenses incurred or sustained by anyone resulting from any interpretation made by any of our officers, agents or employees. These interpretations are also subject to our general terms and conditions set out in our current Price Schedule.

15-009-26332-0000 Comments

THANK YOU FOR USING ELI WIRELINE HAYS, KANSAS (785) 628-6395  
 DIRECTIONS  
 CLAFLIN, KS., 5N. ON BLKTOP, 1/2W., S. INTO

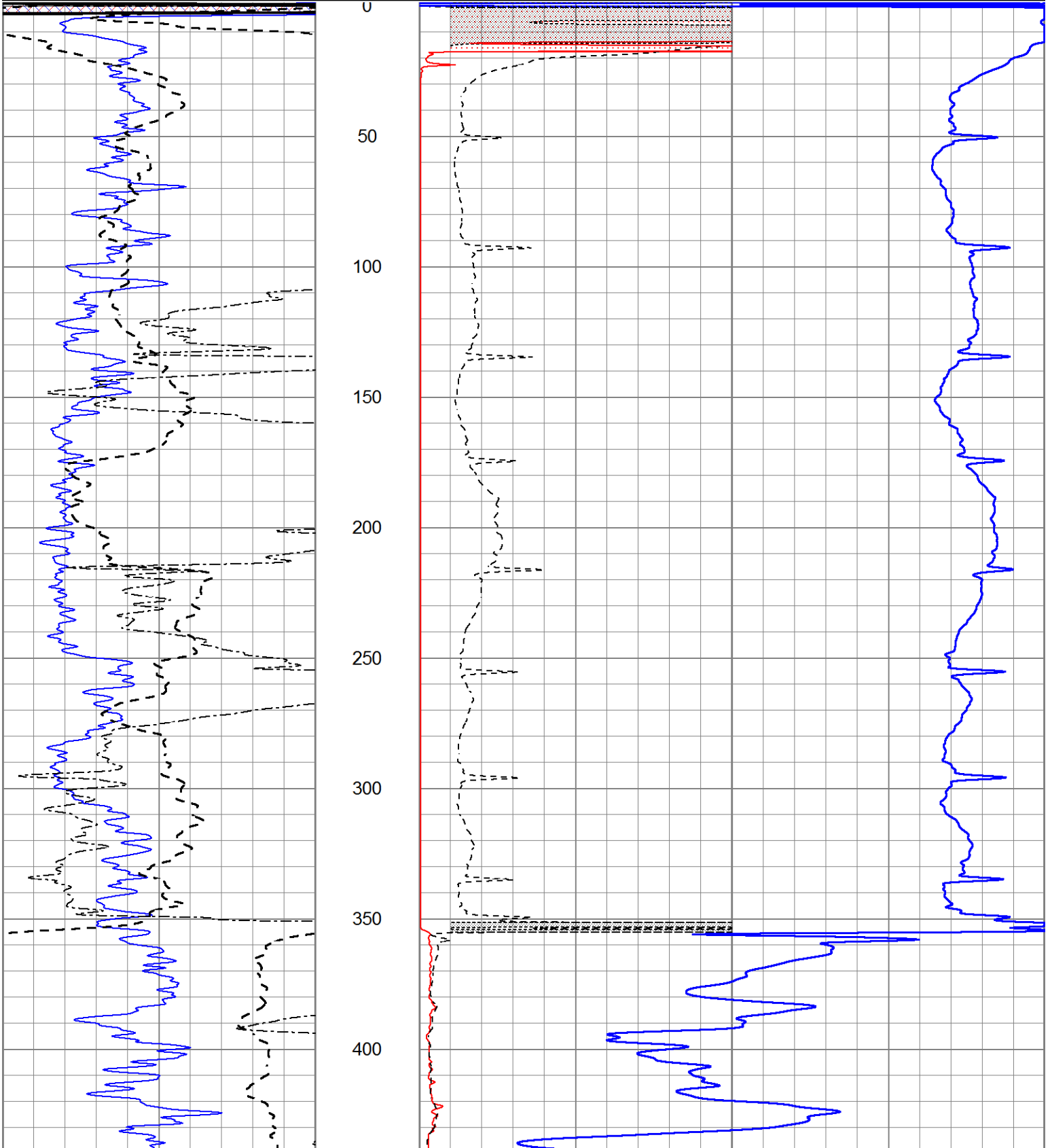


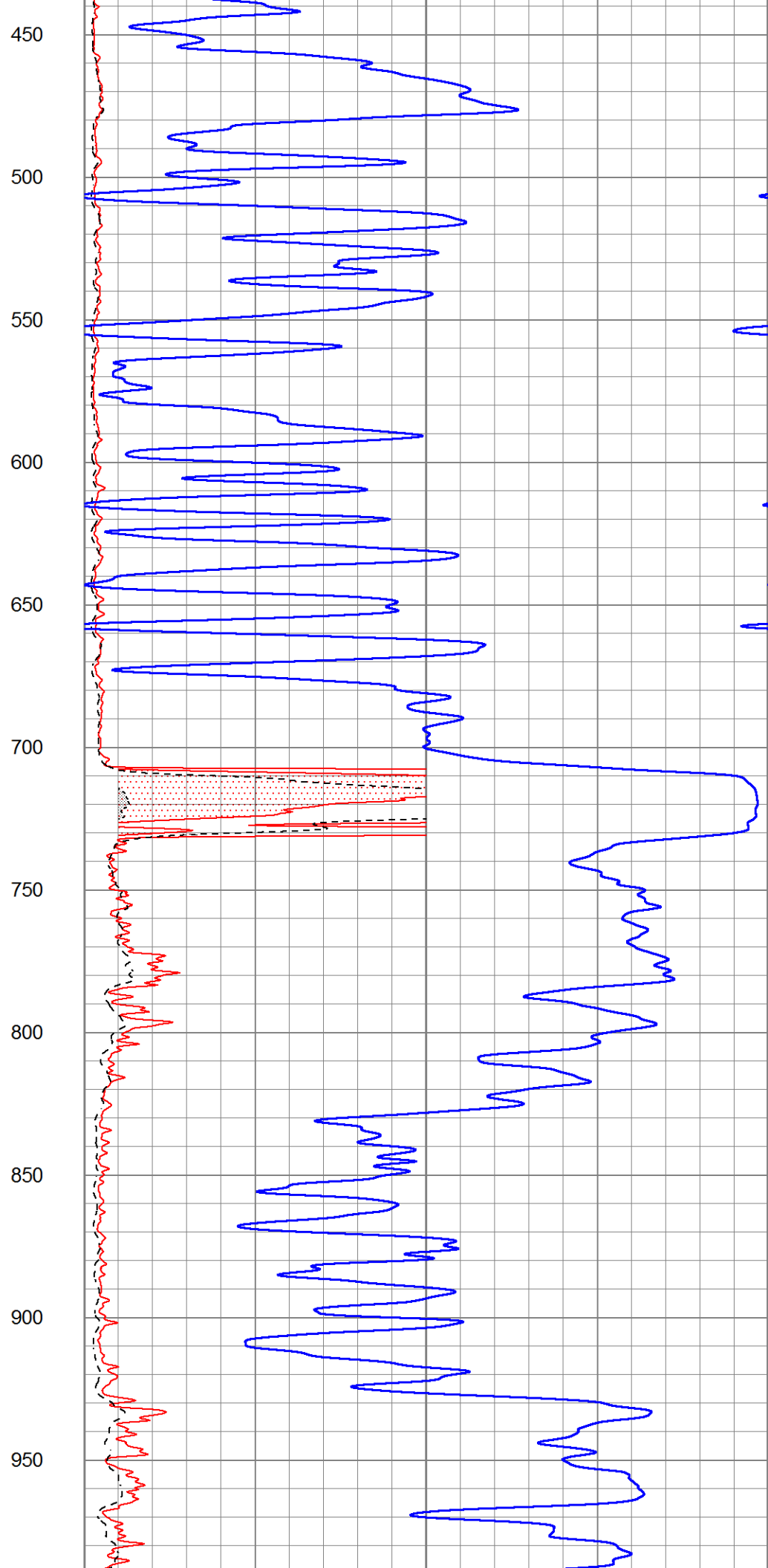
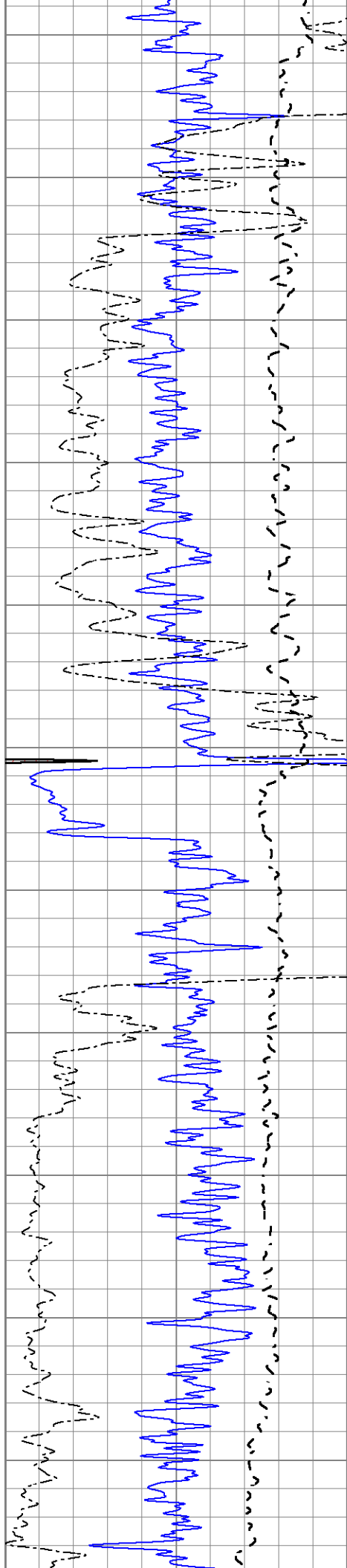
# MAIN SECTION

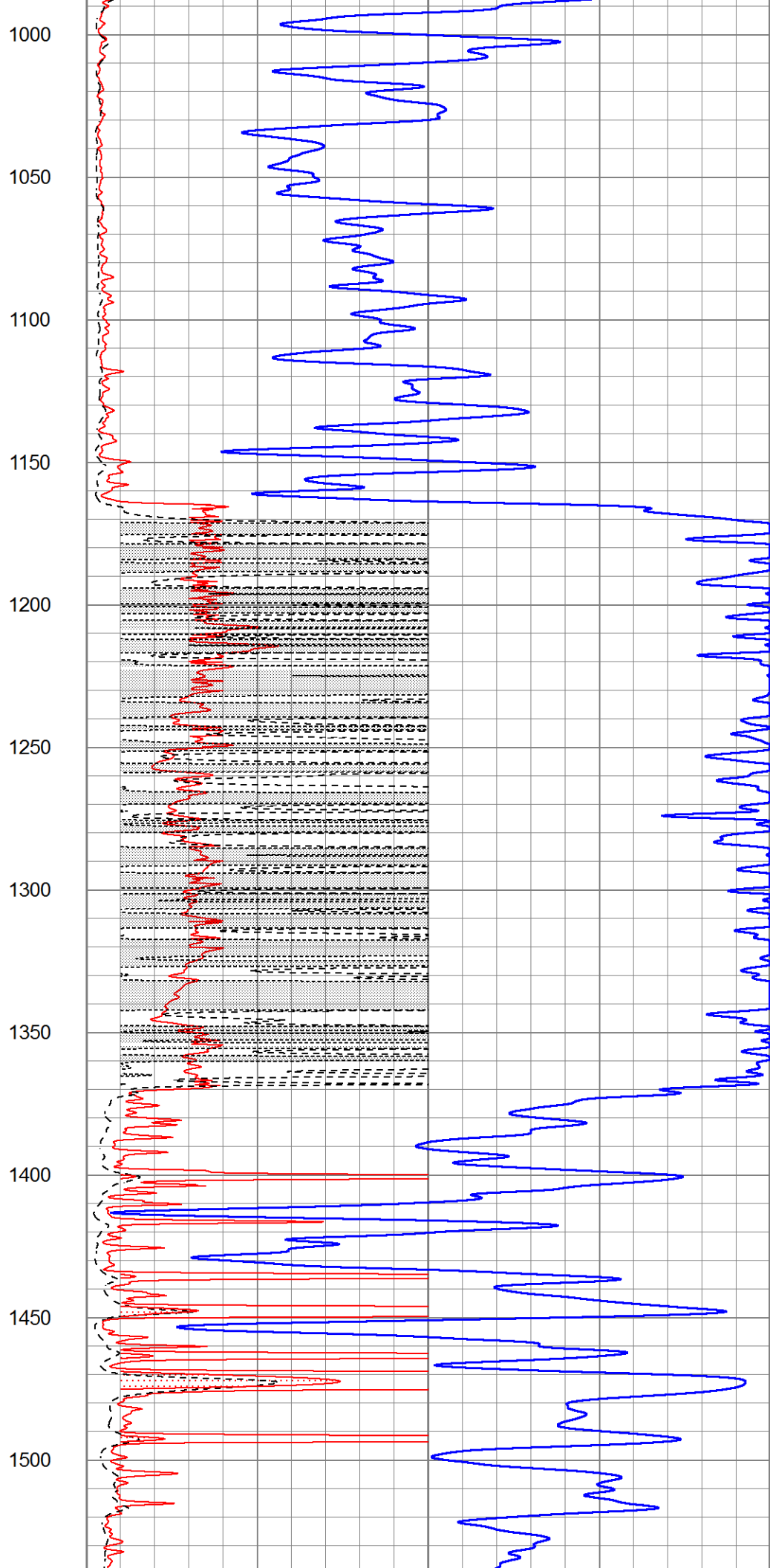
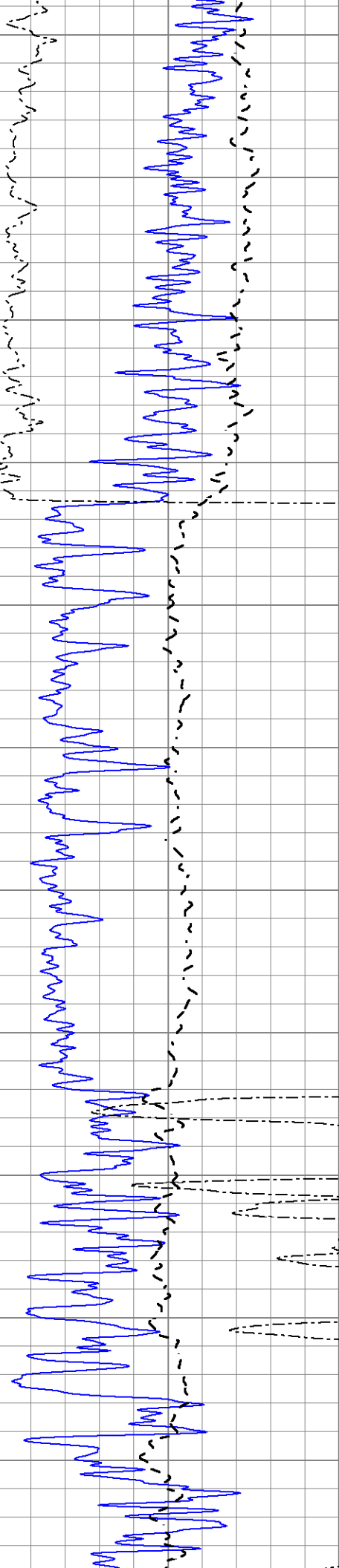
Database File 6254ddn.db  
 Dataset Pathname pass3.1M  
 Presentation Format dil2  
 Dataset Creation Tue Feb 22 06:18:17 2022  
 Charted by Depth in Feet scaled 1:600

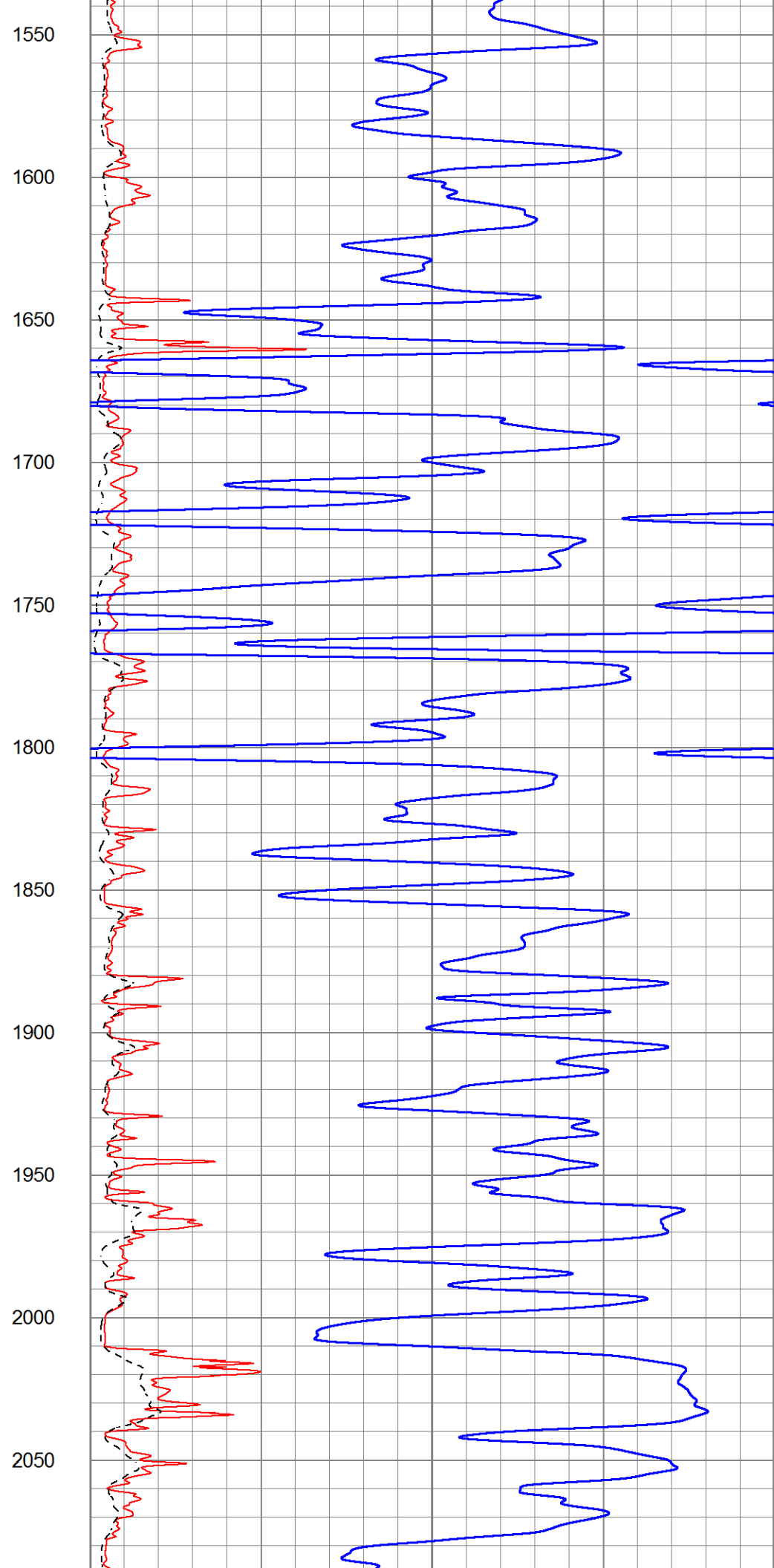
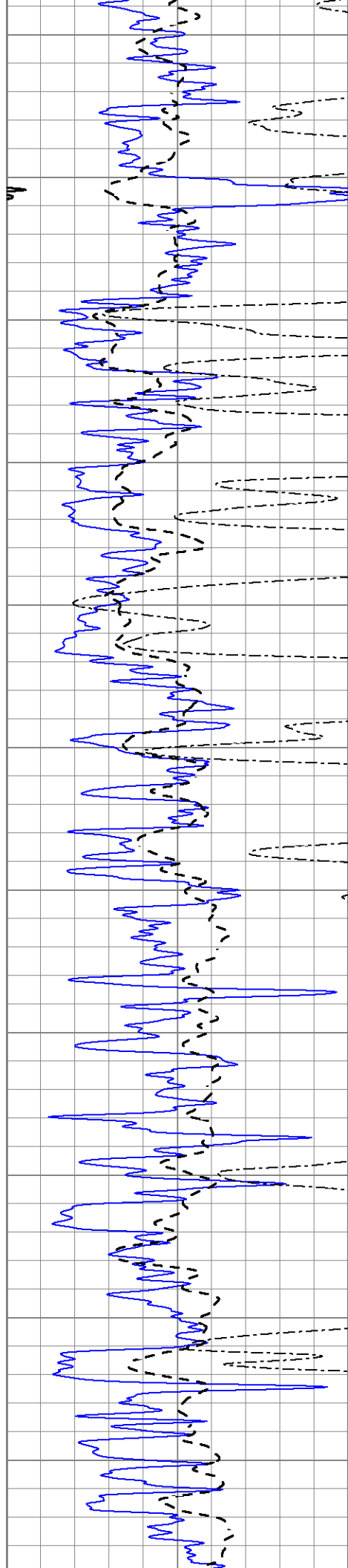
|      |                  |     |
|------|------------------|-----|
| 0    | Gamma Ray (GAPI) | 150 |
| -100 | SP (mV)          | 100 |
| 0    | RWA (Ohm-m)      | 1   |

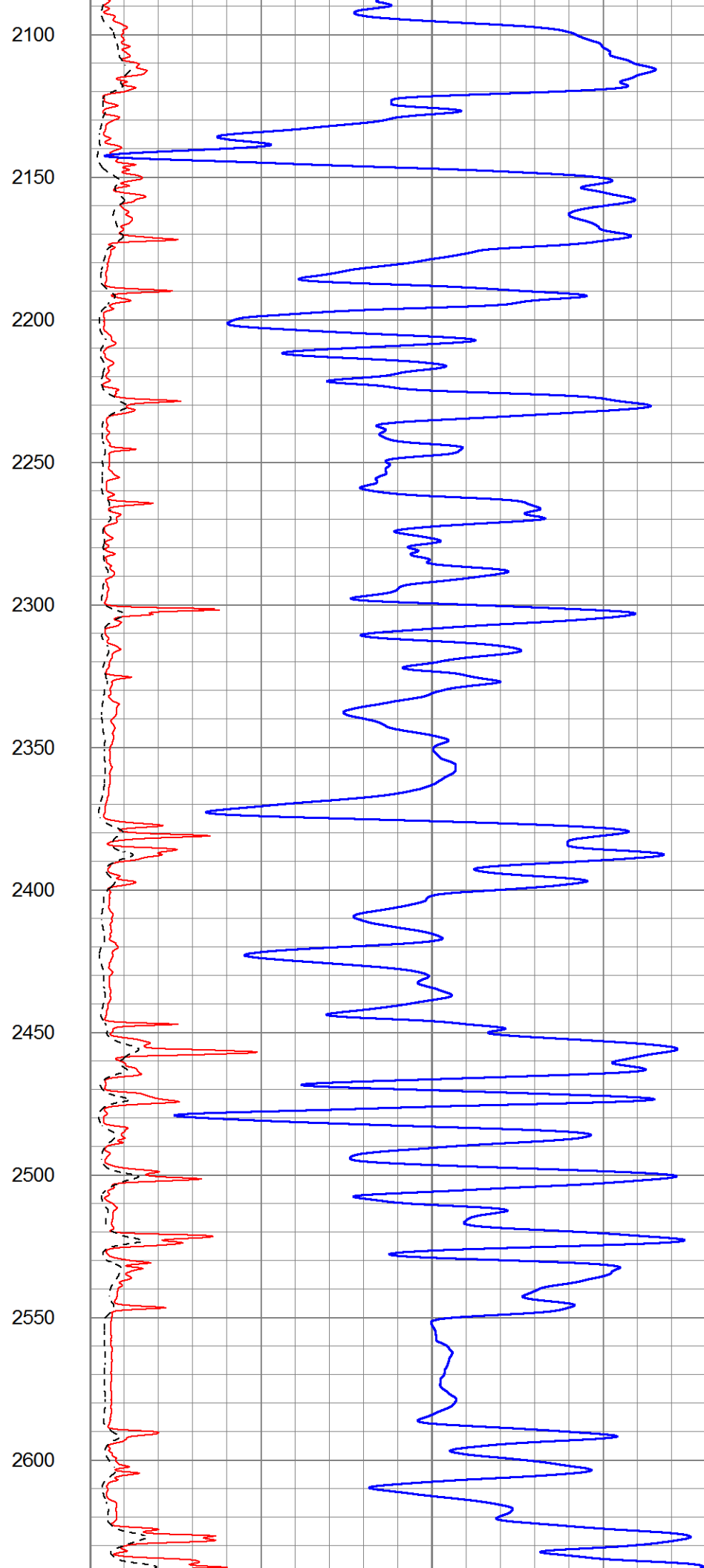
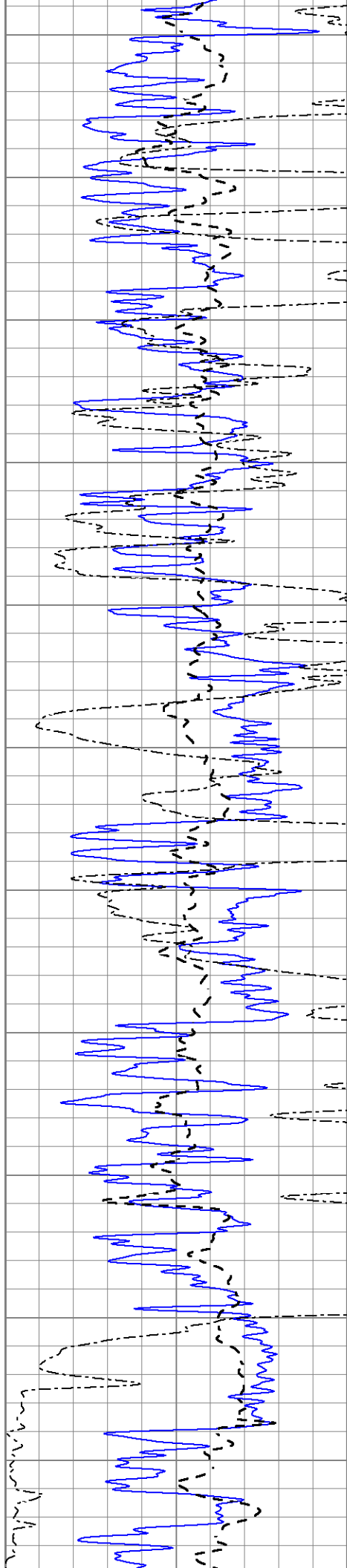
|      |                  |     |
|------|------------------|-----|
| 1000 | CILD (mmho/m)    | 0   |
| 0    | RLL3 (Ohm-m)     | 50  |
| 0    | RILD (Ohm-m)     | 50  |
| 50   | RILD X10 (Ohm-m) | 500 |
| 50   | RLL3 X10 (Ohm-m) | 500 |

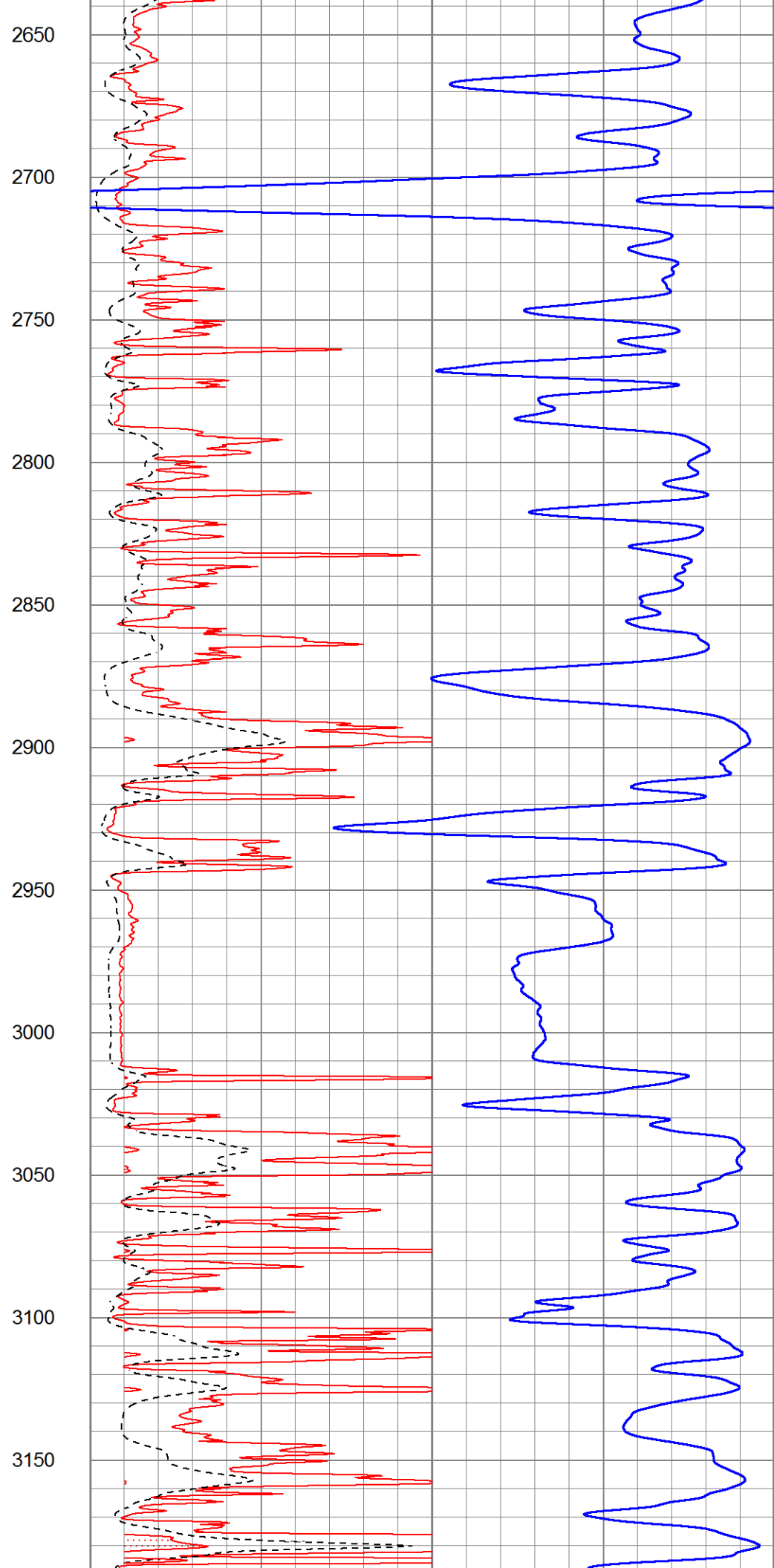
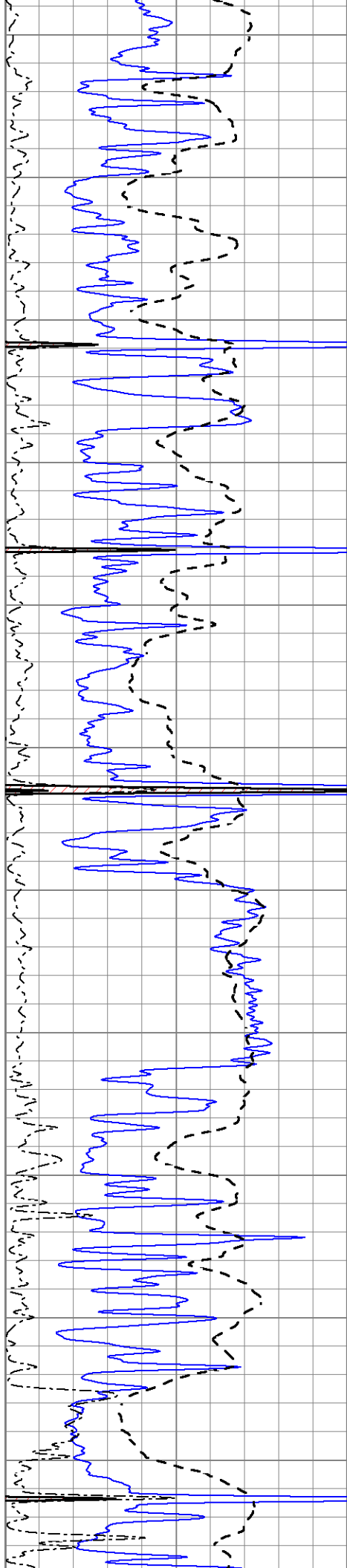


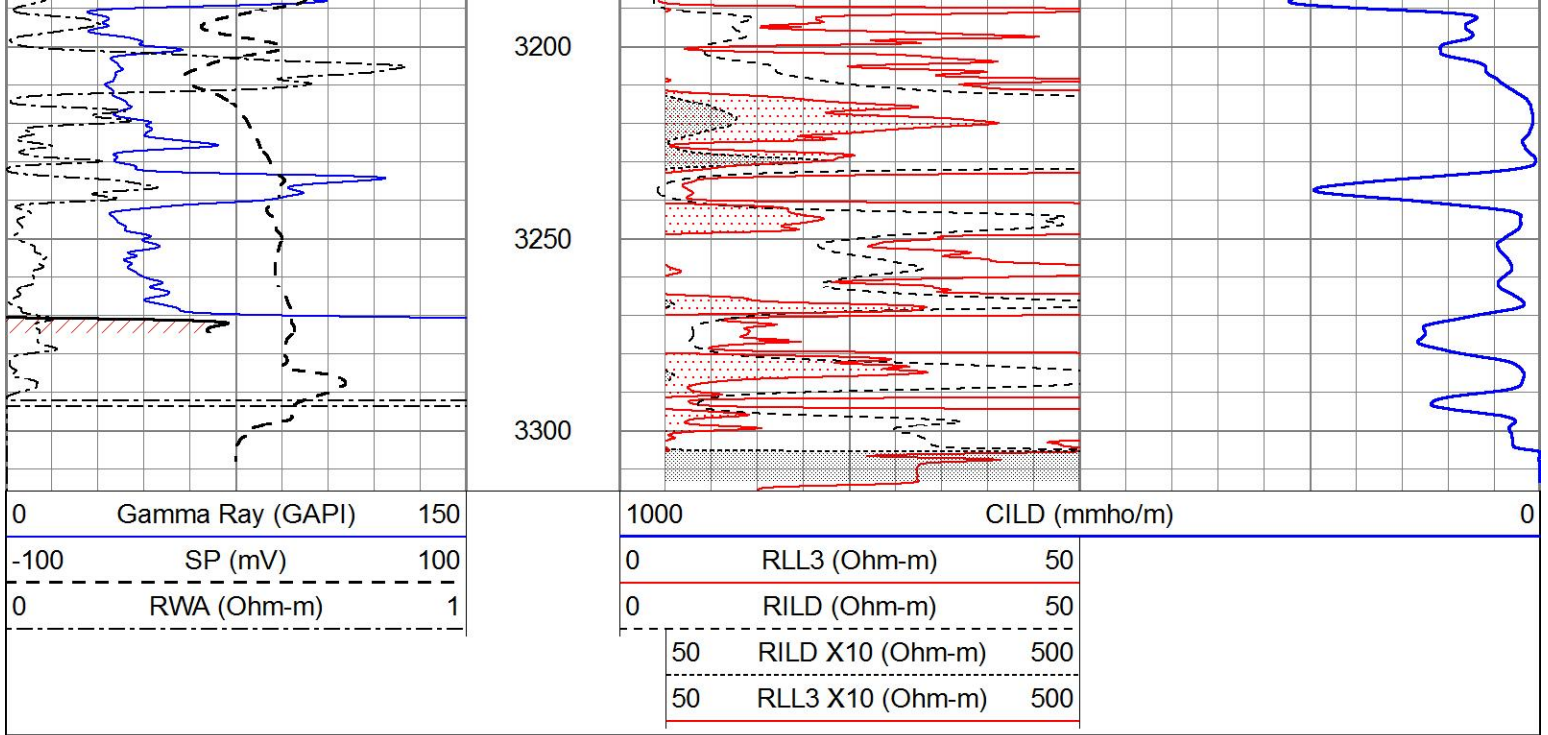








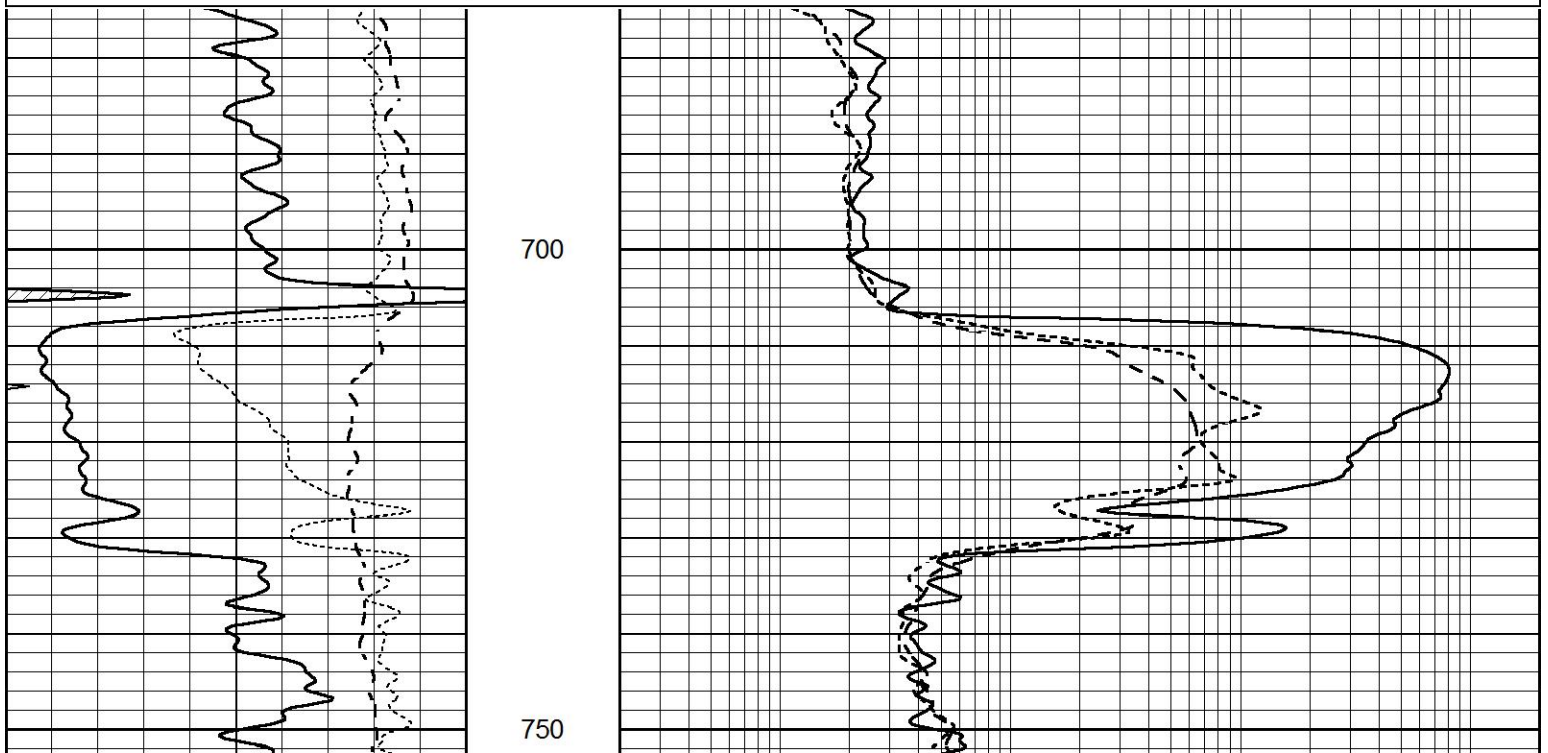




# ANHYDRITE

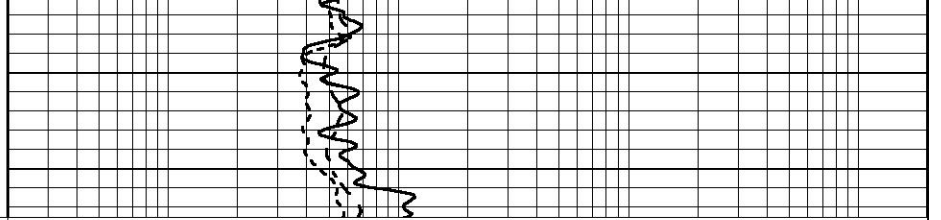
Database File 6254ddn.db  
 Dataset Pathname pass3.1A  
 Presentation Format \_dil  
 Dataset Creation Tue Feb 22 06:18:55 2022  
 Charted by Depth in Feet scaled 1:240

|      |                  |     |     |                          |      |
|------|------------------|-----|-----|--------------------------|------|
| 0    | GAMMA RAY (GAPI) | 150 | 0.2 | SHALLOW GUARD (Ohm-m)    | 2000 |
| -100 | SP (mV)          | 100 | 0.2 | DEEP INDUCTION (Ohm-m)   | 2000 |
| -250 | Rxo/Rt           | 50  | 0.2 | MEDIUM INDUCTION (Ohm-m) | 2000 |
| 0    | MINMK            | 20  |     |                          |      |





|      |                  |     |
|------|------------------|-----|
| 0    | GAMMA RAY (GAPI) | 150 |
| -100 | SP (mV)          | 100 |
| -250 | Rxo/Rt           | 50  |
| 0    | MINMK            | 20  |



|     |                          |      |
|-----|--------------------------|------|
| 0.2 | SHALLOW GUARD (Ohm-m)    | 2000 |
| 0.2 | DEEP INDUCTION (Ohm-m)   | 2000 |
| 0.2 | MEDIUM INDUCTION (Ohm-m) | 2000 |

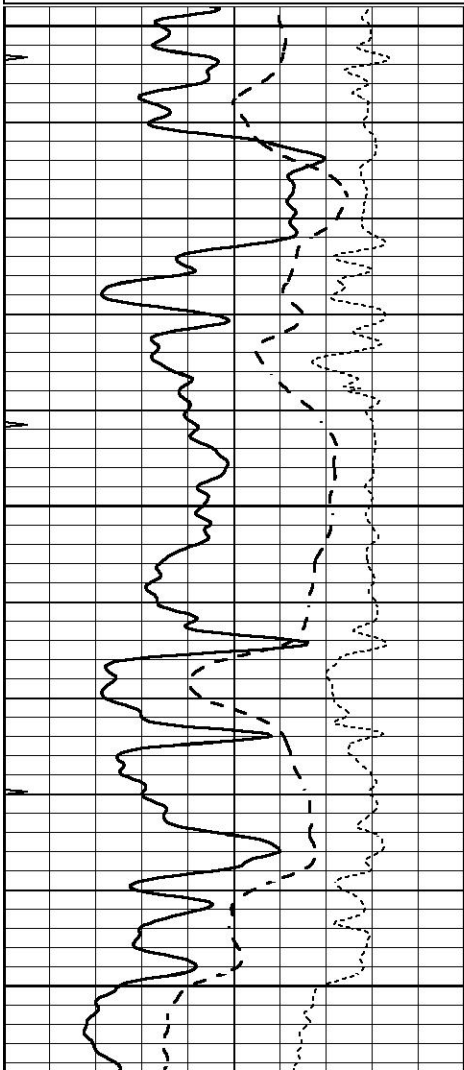


# MAIN SECTION

Database File 6254ddn.db  
 Dataset Pathname pass3.1M  
 Presentation Format \_dil  
 Dataset Creation Tue Feb 22 06:18:17 2022  
 Charted by Depth in Feet scaled 1:240

|      |                  |     |
|------|------------------|-----|
| 0    | GAMMA RAY (GAPI) | 150 |
| -100 | SP (mV)          | 100 |
| -250 | Rxo/Rt           | 50  |
| 0    | MINMK            | 20  |

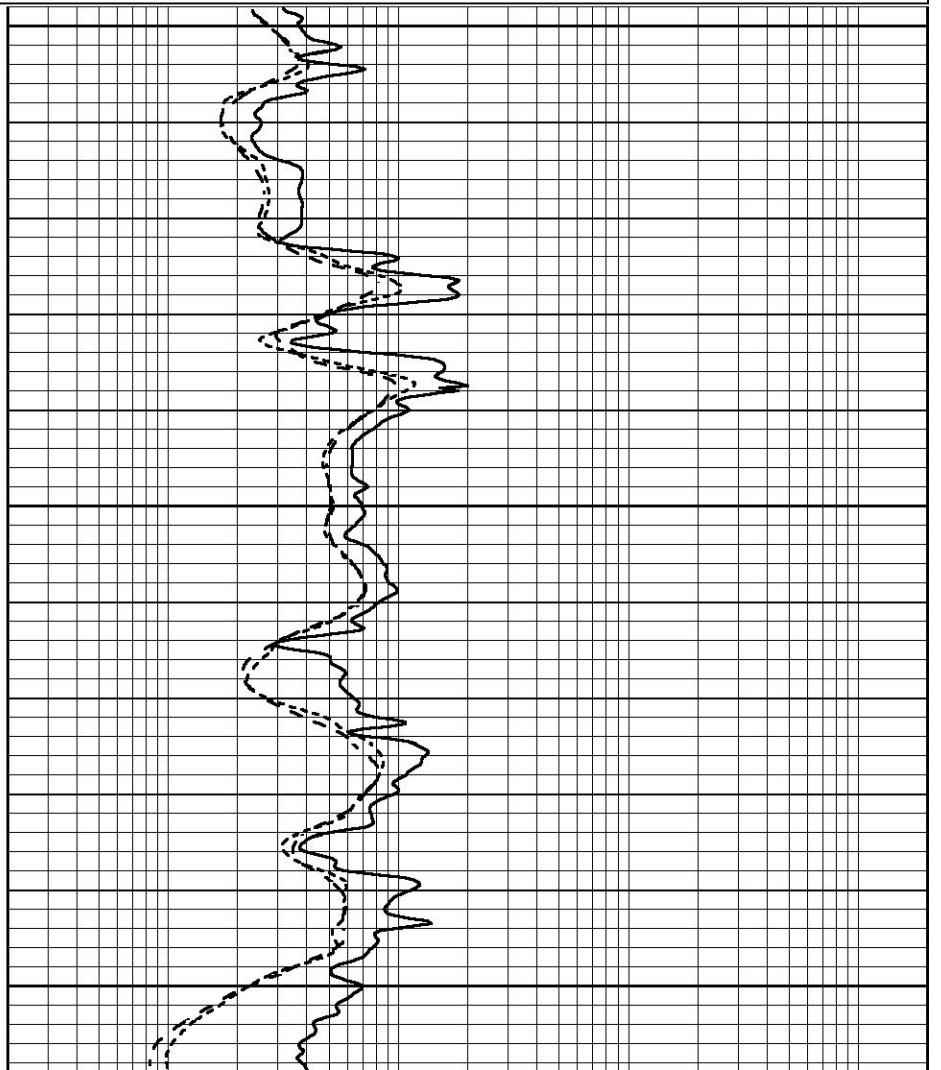
|     |                          |      |
|-----|--------------------------|------|
| 0.2 | SHALLOW GUARD (Ohm-m)    | 2000 |
| 0.2 | DEEP INDUCTION (Ohm-m)   | 2000 |
| 0.2 | MEDIUM INDUCTION (Ohm-m) | 2000 |

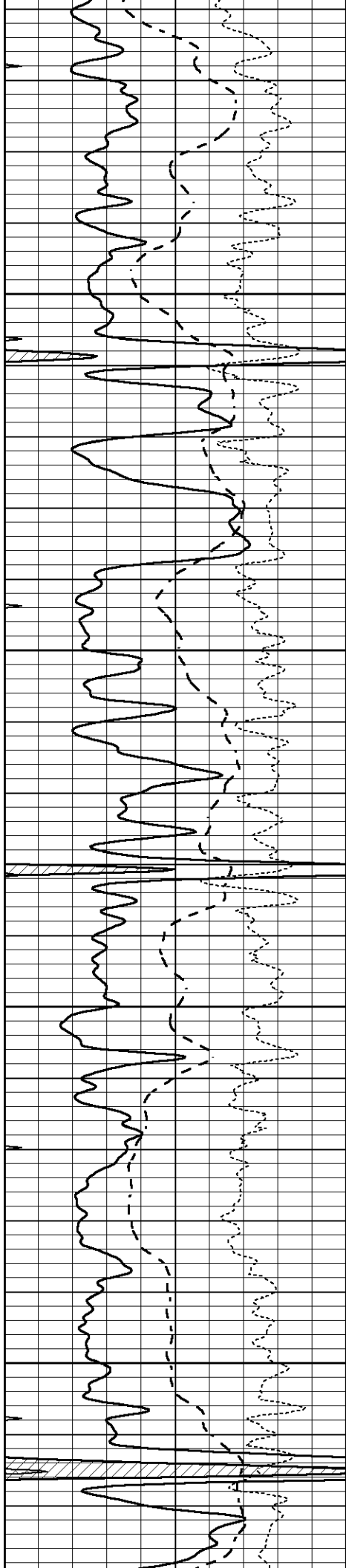


2600

2650

2700



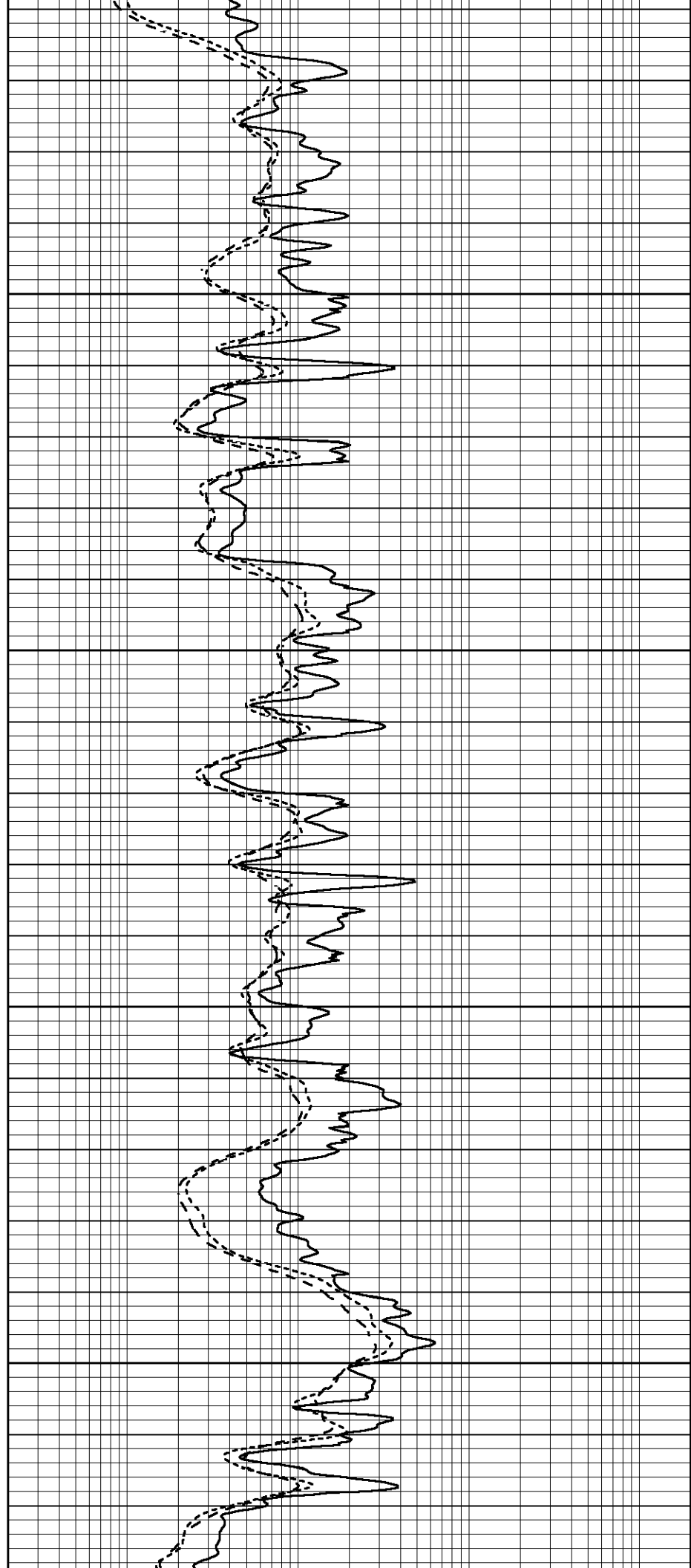


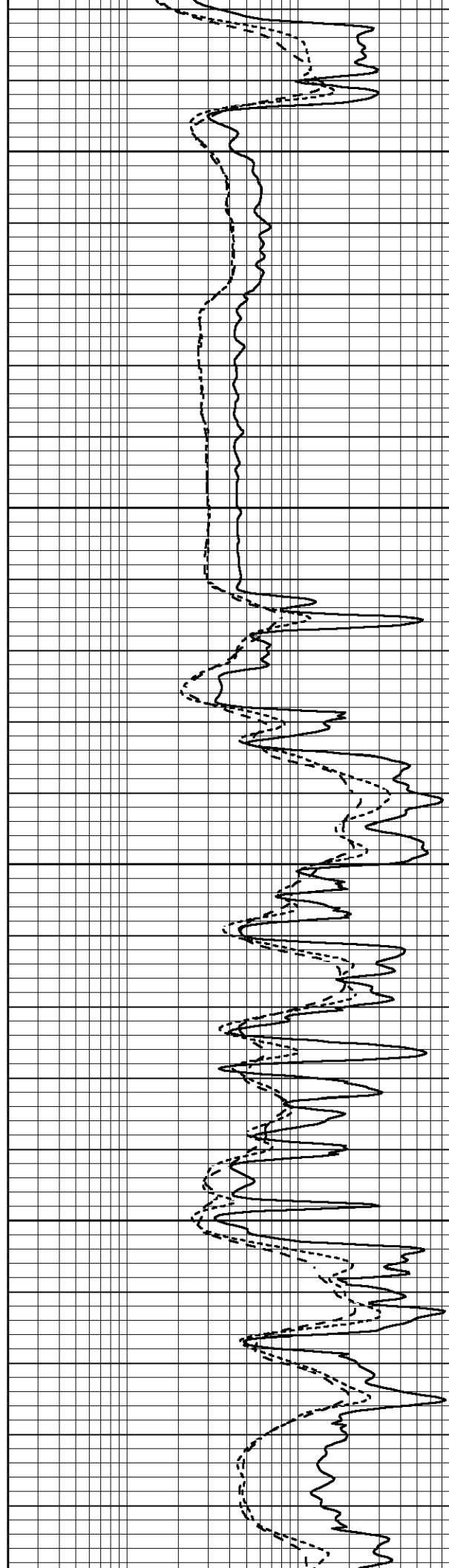
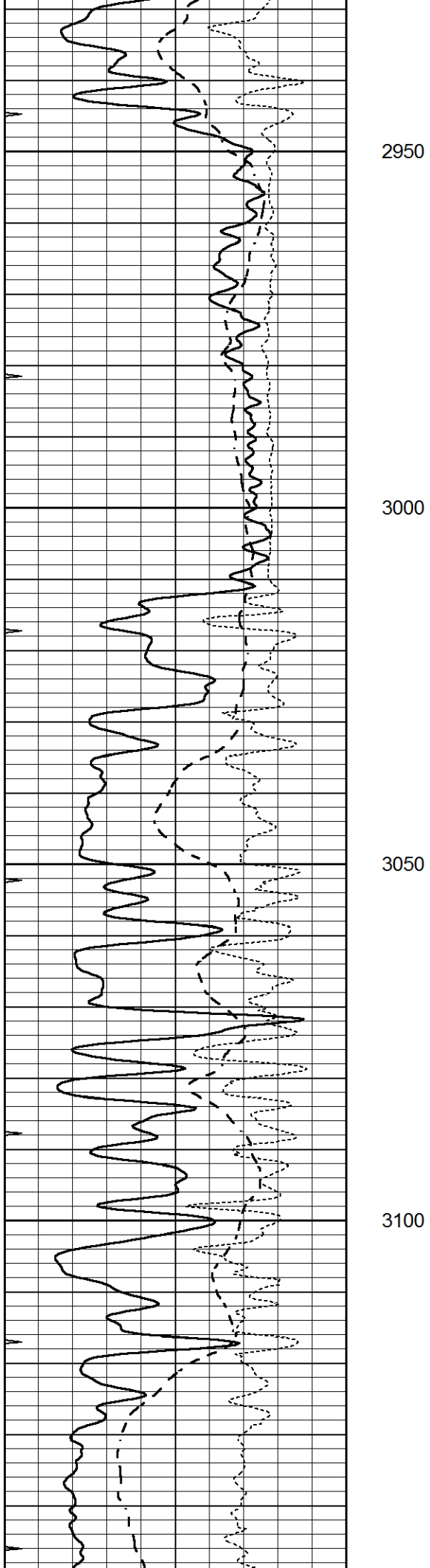
2750

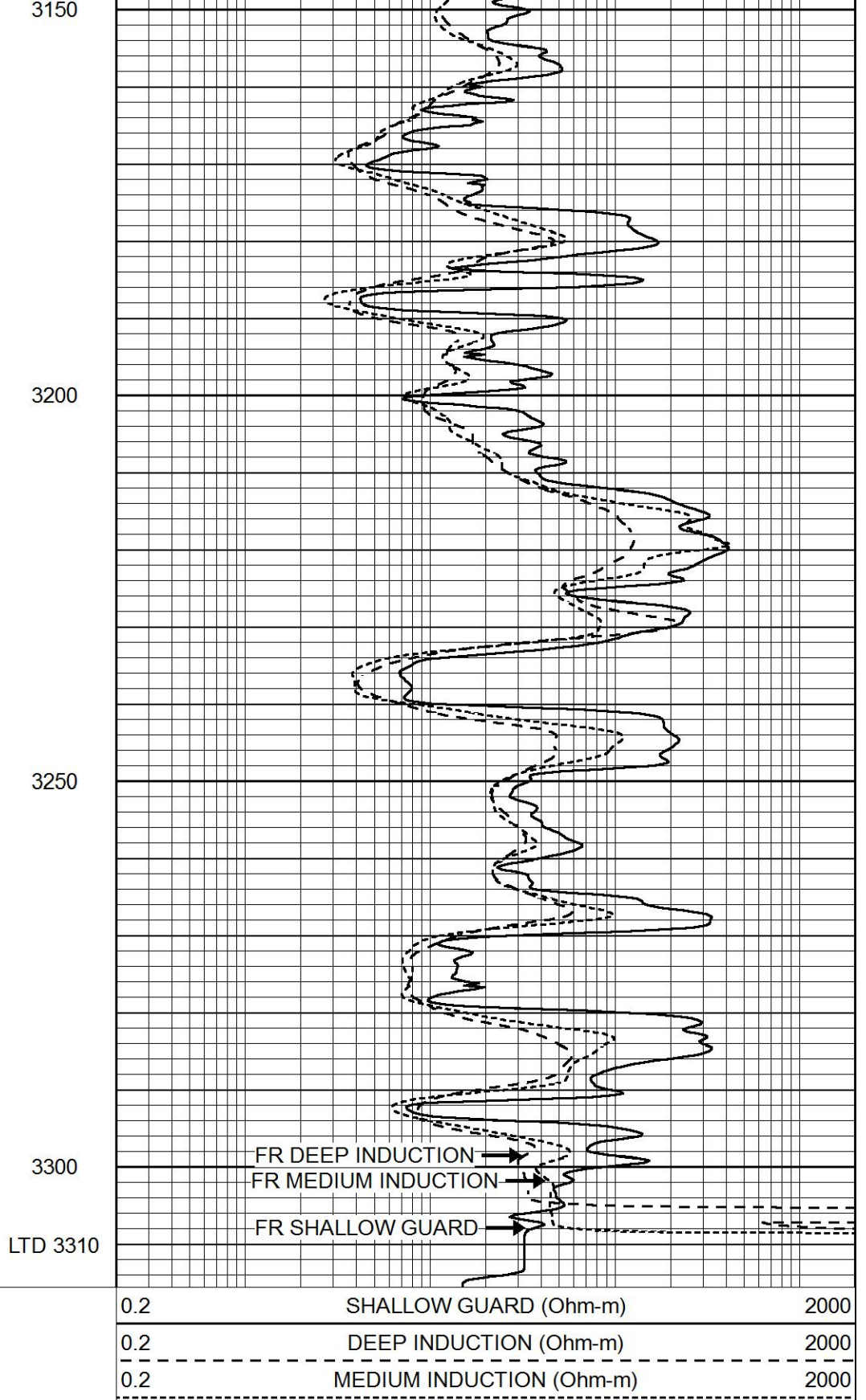
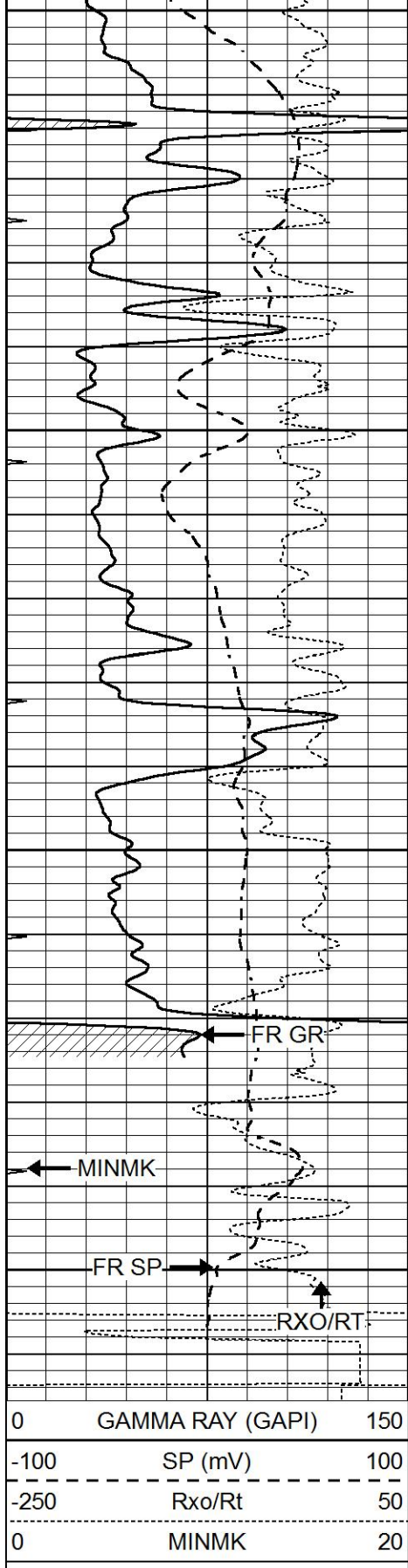
2800

2850

2900



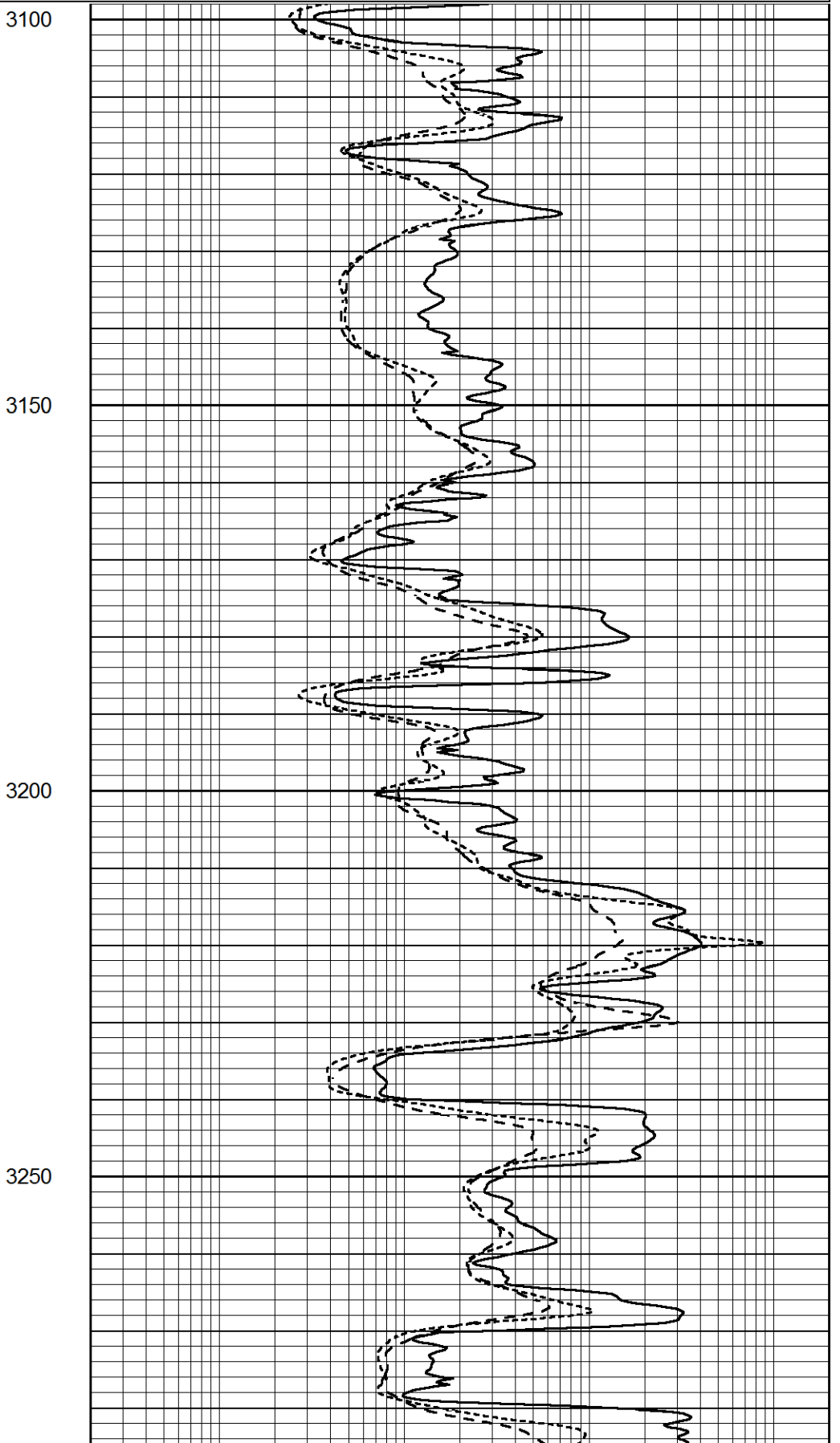
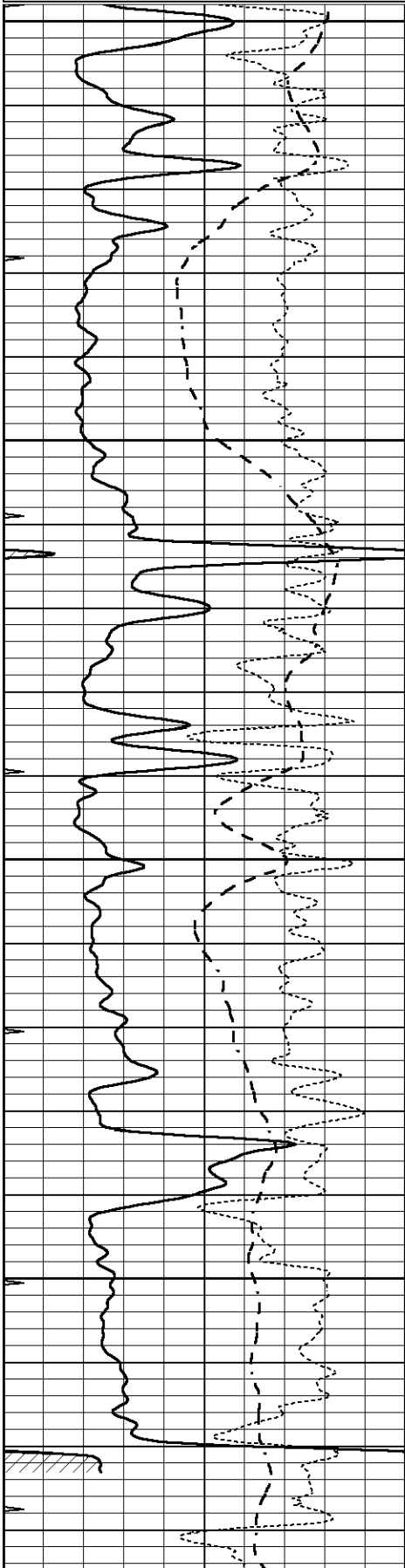


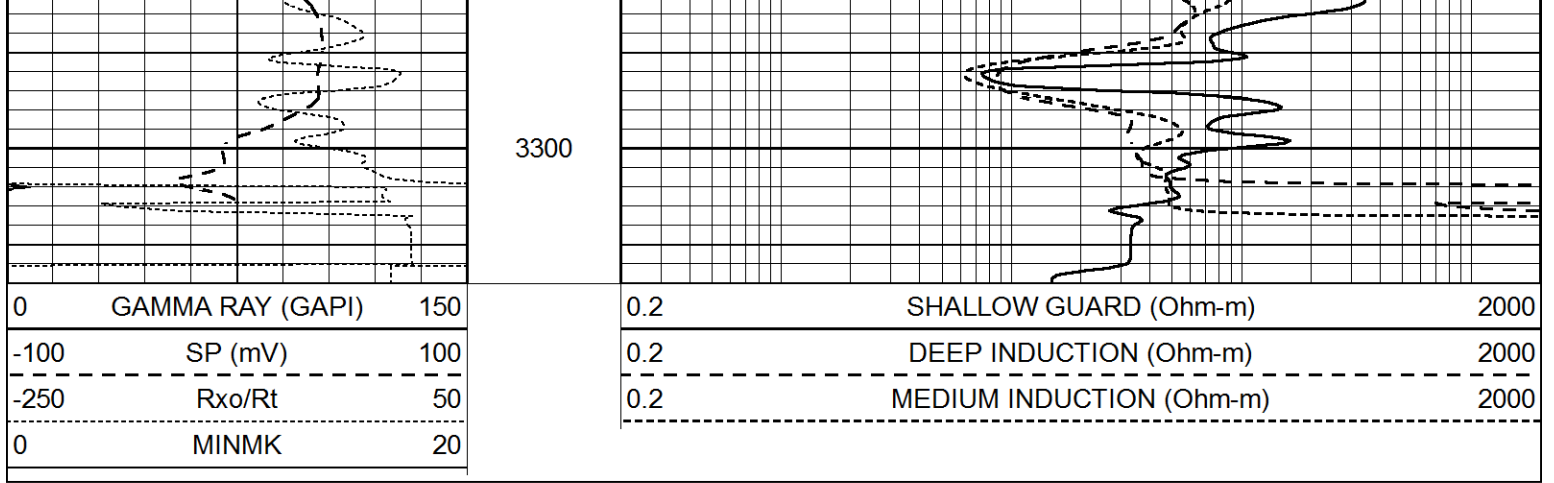


# REPEAT SECTION

|      |                  |     |
|------|------------------|-----|
| 0    | GAMMA RAY (GAPI) | 150 |
| -100 | SP (mV)          | 100 |
| -250 | Rxo/Rt           | 50  |
| 0    | MINMK            | 20  |

|     |                          |      |
|-----|--------------------------|------|
| 0.2 | SHALLOW GUARD (Ohm-m)    | 2000 |
| 0.2 | DEEP INDUCTION (Ohm-m)   | 2000 |
| 0.2 | MEDIUM INDUCTION (Ohm-m) | 2000 |





**Calibration Report**

Database File 6254ddn.db  
 Dataset Pathname pass3.1M  
 Dataset Creation Tue Feb 22 06:18:17 2022

**Dual Induction Calibration Report**

Serial-Model: PROBE9-DILG  
 Surface Cal Performed: Mon Feb 21 18:55:19 2022  
 Downhole Cal Performed: Wed Mar 11 11:31:19 2020  
 After Survey Verification Performed: Wed Mar 11 11:31:22 2020

**Surface Calibration**

| Loop:     | Readings |       |   | V     | References |         |         | Results |         |
|-----------|----------|-------|---|-------|------------|---------|---------|---------|---------|
|           | Air      | Loop  |   |       | Air        | Loop    | mmho/m  | m       | b       |
| Deep      | -0.014   | 0.629 |   |       | 0.000      | 400.000 | mmho/m  | 720.000 | -15.000 |
| Medium    | 0.039    | 0.728 |   |       | 0.000      | 464.000 | mmho/m  | 720.000 | -22.000 |
| Internal: | Zero     | Cal   |   | Zero  | Cal        |         | m       | b       |         |
| Deep      | 0.011    | 0.610 | V | 0.000 | 400.000    | mmho/m  | 667.135 | -7.256  |         |
| Medium    | 0.005    | 0.712 | V | 0.000 | 464.000    | mmho/m  | 655.677 | -3.102  |         |

**Downhole Calibration**

|        | Readings |        |        | mmho/m  | References |        |        | Results |    |
|--------|----------|--------|--------|---------|------------|--------|--------|---------|----|
|        | Zero     | Cal    |        |         | Zero       | Cal    | mmho/m | m'      | b' |
| Deep   | 0.000    | 0.000  | mmho/m | 14.508  | 388.384    | mmho/m | 1.000  | 0.000   |    |
| Medium | 0.000    | 0.000  | mmho/m | 166.367 | 504.400    | mmho/m | 1.000  | 0.000   |    |
| LL3    |          | 7.500  | V      |         | 1400.000   | Ohm-m  |        |         |    |
|        |          | 0.000  | V      |         | 20.000     | Ohm-m  |        |         |    |
|        |          | -7.200 | V      |         | 4000.000   | mmho-m |        |         |    |

**After Survey Verification**

|        | Readings |       |        | mmho/m | Targets |        |        | Results |    |
|--------|----------|-------|--------|--------|---------|--------|--------|---------|----|
|        | Zero     | Cal   |        |        | Zero    | Cal    | mmho/m | m'      | b' |
| Deep   | 0.000    | 0.000 | mmho/m | 0.000  | 0.000   | mmho/m | 0.000  | 0.000   |    |
| Medium | 0.000    | 0.000 | mmho/m | 0.000  | 0.000   | mmho/m | 0.000  | 0.000   |    |
| LL3    |          | 1.000 | Ohm-m  |        | 1.000   | Ohm-m  |        |         |    |
|        |          | 0.000 | Ohm-m  |        | 0.000   | Ohm-m  |        |         |    |
|        |          | 1.000 | mmho-m |        | 1.000   | mmho-m |        |         |    |

**Litho Density Calibration Report**  
 Serial: 001 Model: PRB

|             | Background | Magnesium | Aluminum | Aluminum+Fe |      |
|-------------|------------|-----------|----------|-------------|------|
| Window 1    | 1593.8     | 10211.9   | 3449.0   | 3132.1      | cps  |
| Window 2    | 1486.7     | 8824.2    | 3065.6   | 2829.4      | cps  |
| Window 3    | 1206.8     | 4705.7    | 1944.6   | 1871.7      | cps  |
| Window 4    | 361.0      | 367.9     | 364.8    | 363.1       | cps  |
| Long Space  | 0.0        | 7337.5    | 1578.9   | 1342.7      | cps  |
| Short Space | 2.7        | 2543.4    | 1657.9   | 1382.7      | cps  |
| Rho         |            | 1.7100    | 2.5900   | 0.0000      | g/cc |
| Pe          |            | 2.0000    | 2.7500   | 5.7900      |      |

Rib Angle : 44.4      Rib Slope : 0.980      Density/Spine Ratio : 0.552  
 Spine Angle : 74.4      Spine Slope : 3.590      Spine Intercept : -19.2

Before Survey Verification

Performed Wed Dec 31 18:00:00 1969

|                     |     |        |        |        |      |
|---------------------|-----|--------|--------|--------|------|
| Window 1            | 0.0 | 0.0    | 0.0    | 0.0    | cps  |
| Window 2            | 0.0 | 0.0    | 0.0    | 0.0    | cps  |
| Window 3            | 0.0 | 0.0    | 0.0    | 0.0    | cps  |
| Window 4            | 0.0 | 0.0    | 0.0    | 0.0    | cps  |
| Long Space          | 0.0 | 0.0    | 0.0    | 0.0    | cps  |
| Short Space         | 0.0 | 0.0    | 0.0    | 0.0    | cps  |
| Measured Rho        |     | 0.0000 | 0.0000 | 0.0000 | g/cc |
| Measured Correction |     | 0.0000 | 0.0000 | 0.0000 | g/cc |
| Measured Pe         |     |        | 0.0000 | 0.0000 |      |

After Survey Verification

Performed Wed Dec 31 18:00:00 1969

|                     |     |        |        |        |      |
|---------------------|-----|--------|--------|--------|------|
| Window 1            | 0.0 | 0.0    | 0.0    | 0.0    | cps  |
| Window 2            | 0.0 | 0.0    | 0.0    | 0.0    | cps  |
| Window 3            | 0.0 | 0.0    | 0.0    | 0.0    | cps  |
| Window 4            | 0.0 | 0.0    | 0.0    | 0.0    | cps  |
| Long Space          | 0.0 | 0.0    | 0.0    | 0.0    | cps  |
| Short Space         | 0.0 | 0.0    | 0.0    | 0.0    | cps  |
| Measured Rho        |     | 0.0000 | 0.0000 | 0.0000 | g/cc |
| Measured Correction |     | 0.0000 | 0.0000 | 0.0000 | g/cc |
| Measured Pe         |     |        | 0.0000 | 0.0000 |      |

Compensated Neutron Calibration Report

Serial Number: 070808PMC  
 Tool Model: NABORS

PRE-SURVEY VERIFICATION

| Detector    | Readings | Measured | Target |
|-------------|----------|----------|--------|
| Short Space | cps      |          |        |
| Long Space  | cps      | pu       | pu     |

POST-SURVEY VERIFICATION

| Detector    | Readings | Measured | Target |
|-------------|----------|----------|--------|
| Short Space | cps      |          |        |
| Long Space  | cps      | pu       | pu     |

Gamma Ray Calibration Report

Serial Number: 070558  
Tool Model: OPEN\_GR  
Performed: Sun Feb 20 16:27:35 2022

Calibrator Value: 1.0 GAPI

Background Reading: 0.0 cps

Calibrator Reading: 1.0 cps

Sensitivity: 0.2800 GAPI/cps