



MIDWEST WIRELINE

DUAL COMP POROSITY LOG

Company Griffin Management LLC
 Well Amber #1
 Field Turkey Creek Camp
 County Pratt
 State Kansas

Company Griffin Management LLC
 Well Amber #1
 Field Turkey Creek Camp
 County Pratt State Kansas

Location: API #: 15-151-22540-00-00
 2310 FNL 330 FEL
 SEC 28 TWP 29S RGE 15W
 Permanent Datum Ground Level Elevation 1998
 Log Measured From Kelly Bushing
 Drilling Measured From Kelly Bushing
 Other Services
 DIL/MEL
 K.B. 2003
 D.F. G.L. 1998

Date	2/2/2022						
Run Number	One						
Type Log	CNL/CDL						
Depth Driller	4820						
Depth Logger	4819						
Bottom Logged Interval	4790						
Top Logged Interval	4450						
Type Fluid In Hole	Chemical						
Salinity, PPM CL	8000						
Density	9.5						
Level	Full						
Max. Rec. Temp. F	124						
Operating Rig Time	3 Hours						
Equipment -- Location	P-24 Hays						
Recorded By	D. Schmidt						
Witnessed By	JR Griffin						
Borehole Record							
Run No.	Bit	From	To	Size	Wgt.	From	To
One	12.25	0	255	8.625	23	0	255
Two	7.875	255	TD				
Casing Record							

<<< Fold Here >>>

All interpretations are opinions based on inferences from electrical or other measurements and Midwest Wireline Services, LLC cannot and does not guarantee the accuracy or correctness of any interpretation, and Midwest Wireline Services, LLC will not be liable or responsible for any loss, costs, damages, or expenses incurred or sustained by anyone resulting from any interpretation made by any of our officers, agents or employees.

Comments

N/A DENOTES NOT AVAILABLE OR NON-APPLICABLE.

Haviland,
 East to 140th, South to 100th, East to 130th, 1/2 East,
 South into

Log Measured From: Kelly Bushing 5 Ft. Above Permanent Datum

THANK YOU FOR USING MIDWEST WIRELINE LLC
 785-625-3858

Your Midwest Wireline Crew

Engineer: D. Schmidt
 Operator:
 Operator:
 Operator:

This Log Record Was Witnessed By

Primary Witness: JR Griffin
 Secondary Witness: Eli Felts
 Secondary Witness:
 Secondary Witness:

Sensor	Offset (ft)	Schematic	Description	Length (ft)	O.D. (in)	Weight (lb)
GR	40.33		GR-M&W (101)	3.00	3.50	50.00
CNLSC CNSSC	37.23 36.48		CNT-M&W (207-MW)	5.00	3.50	100.00
LSD DCAL SSD	28.18 28.17 27.68		CDL-M&W (301-01)	8.50	4.00	250.00
MCAL MI MN	19.58 19.58 19.58		ML-PSIML (402)	7.58	4.00	65.00
RLL3F RLL3	15.50 15.50					
CILD	8.33		DIL-M&W (501 HT)	18.25	3.50	220.00
CILM	4.50					
SP	0.20					

Dataset: griffin_amber 1.db: field/well/stkml/pass2.4
 Total length: 42.33 ft
 Total weight: 685.00 lb
 O.D.: 4.00 in

Log Variables

DatabaseC:\ProgramData\Warrior\Data\griffin_amber 1.db
 Dataset field/well/stkml/pass3.2/_vars_

Top - Bottom

A	BOREID in	BOTTEMP degF	CASEOD in	CASETHCK in	FLUIDDEN g/cc	M	MATRXDEN g/cc
1	7.875	124	5.5	0	1	2	2.71
NPORSEL	PERFS	SNDERR mmho/m	SNDERRM mmho/m	SPSHIFT mV	SRFTEMP degF	SZCOR	TDEPTH ft
Limestone	0	0	0	240	20	Off	4819

Variable Description

A : Cement Factor (a)
 BOREID : Borehole I.D.
 BOTTEMP : Bottom Hole Temperature
 CASEOD : Casing O.D.
 CASETHCK : Casing Thickness
 FLUIDDEN : Fluid Density
 M : Cement Exp (m)
 MATRXDEN : Matrix Density

NPORSEL : Neutron Porosity Curve Select
 PERFS : Perforation Flag
 SNDERR : Deep Sonde Error Correction
 SNDERRM : Medium Sonde Error Correction
 SPSHIFT : S.P. Baseline Offset
 SRFTEMP : Surface Temperature
 SZCOR : CN Size Cor. ?
 TDEPTH : Total Depth



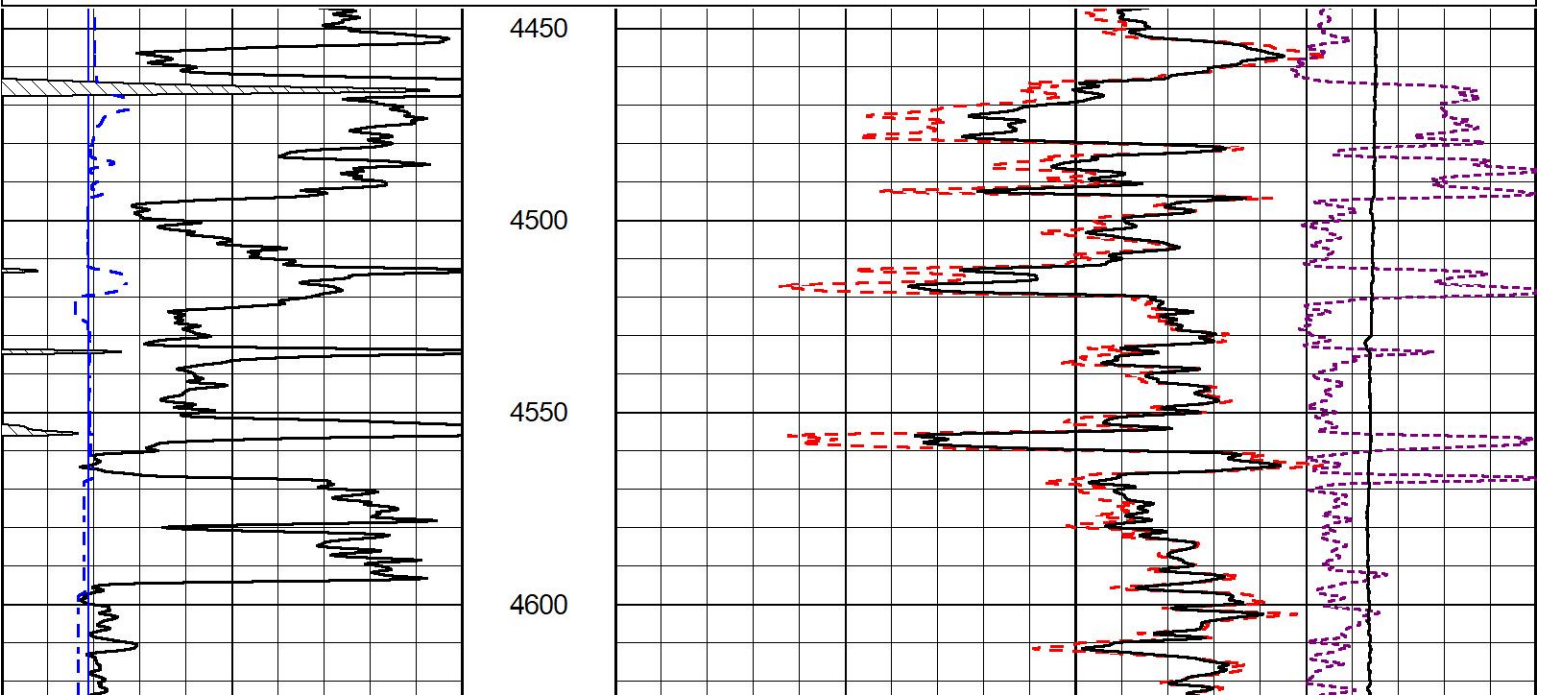
2" SCALE BULK DENSITY

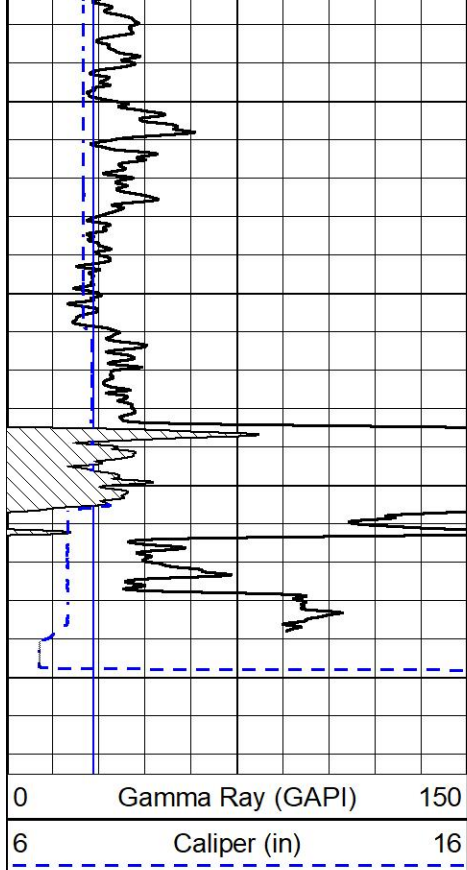
MAIN PASS

Database File griffin_amber 1.db
 Dataset Pathname stkml/pass2.4
 Presentation Format _cdl
 Dataset Creation Thu Feb 03 02:26:11 2022
 Charted by Depth in Feet scaled 1:600

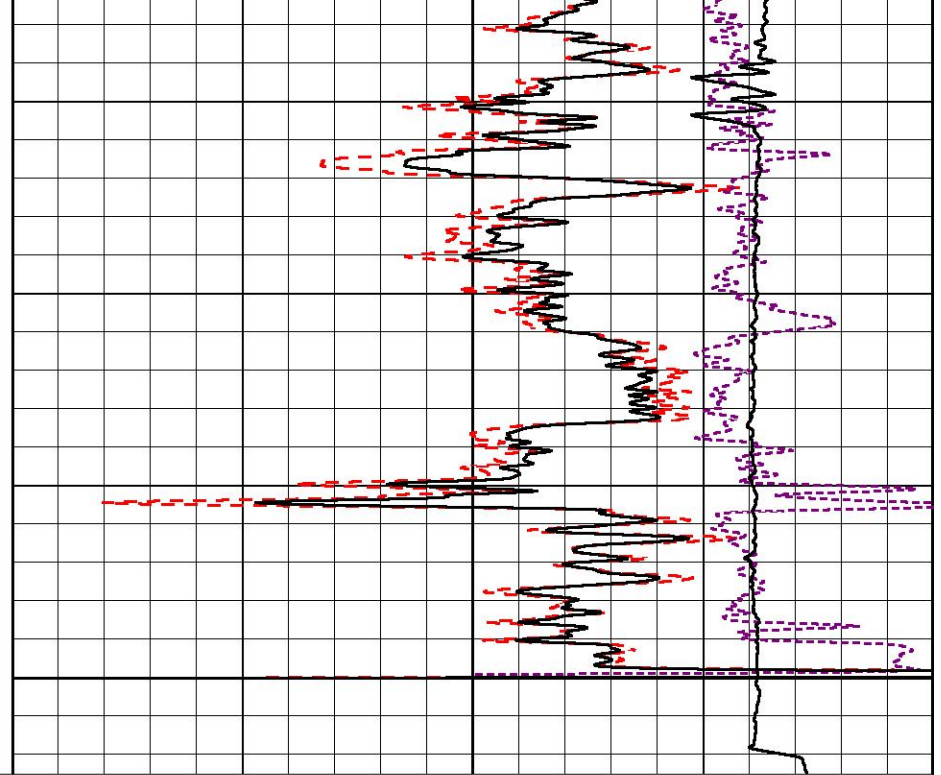
0	Gamma Ray (GAPI)	150
6	Caliper (in)	16

30	Compensated Density (pu)	-10
2	Bulk Density (g/cc)	3
10000	Line Tension (lb)	0
-0.25	Correction (g/cc)	0.25





4650
4700
4750
4800



30	Compensated Density (pu)	-10
2	Bulk Density (g/cc)	3
10000	Line Tension (lb)	0
-0.25	Correction (g/cc)	0.25



MIDWEST WIRELINE

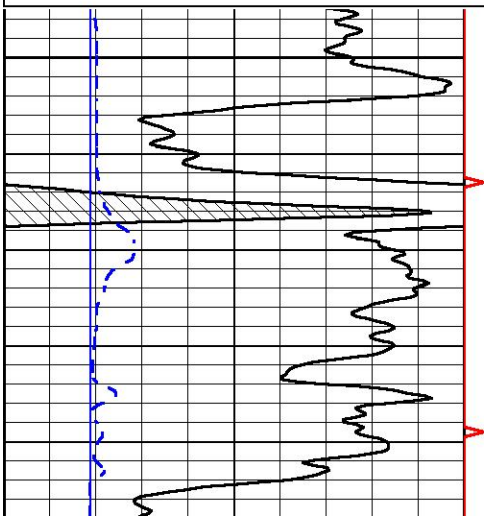
DETAIL SECTION

MAIN PASS

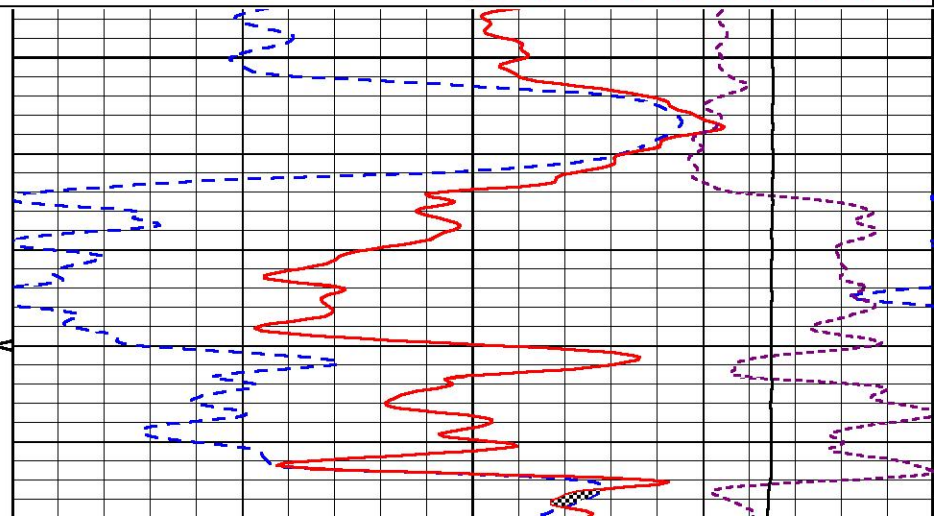
Database File griffin_amber 1.db
 Dataset Pathname stkml/pass2.3
 Presentation Format _CNDLS~1
 Dataset Creation Thu Feb 03 00:37:50 2022
 Charted by Depth in Feet scaled 1:240

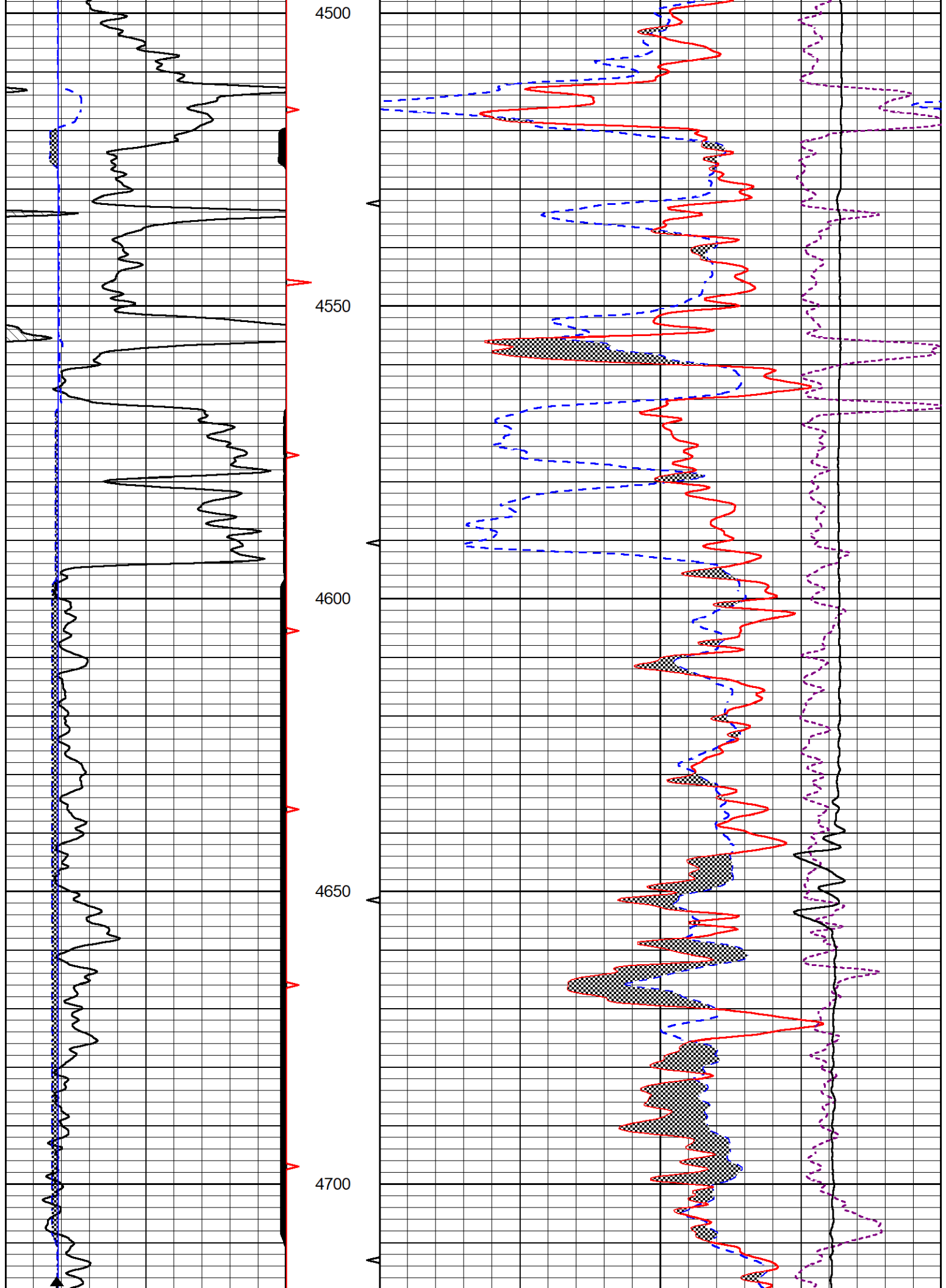
0	Gamma Ray (GAPI)	150
6	Caliper (in)	16

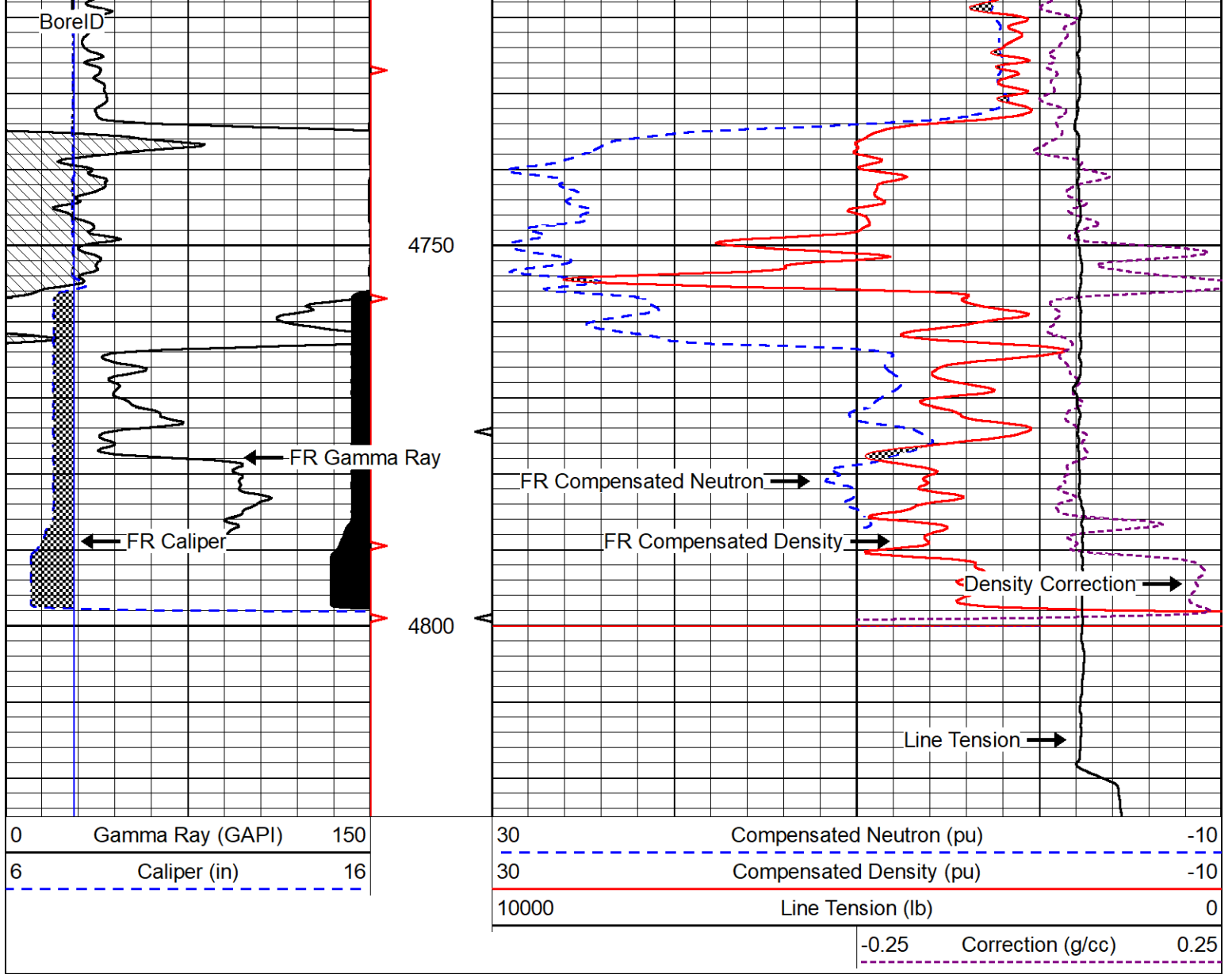
30	Compensated Neutron (pu)	-10
30	Compensated Density (pu)	-10
10000	Line Tension (lb)	0
-0.25	Correction (g/cc)	0.25



4450







Calibration Report

Database File griffin_amber 1.db
 Dataset Pathname stkml/pass2.3
 Dataset Creation Thu Feb 03 00:37:50 2022

Dual Induction Calibration Report

Serial-Model: 501 HT-M&W
 Surface Cal Performed: Mon Jan 24 19:13:55 2022

Loop:	Readings		References			Results	
	Air	Loop	Air	Loop	mmho/m	m	b
Deep	83.639	487.104	0.000	183.000	mmho/m	0.420	-35.500
Medium	113.335	1585.690	0.000	442.000	mmho/m	0.300	-32.000

Microlog Calibration Report

Serial-Model: 402-PSIML
 Performed: Mon Jan 24 20:31:16 2022

Readings		References		Results	
Zone	Cal	Zone	Cal	m	b

	Zero	Cal	Zero	Cal		m	b
Normal	0.0000	1.0000	0.0000	1.0000	Ohm-m	21000.0000	0.0000
Inverse	0.0000	1.0000	0.0000	1.0000	Ohm-m	24000.0000	0.0000
Caliper	1.0052	1.0858	5.0000	16.5000	in	125.0000	-123.8000

Compensated Density Calibration Report

Serial-Model: 301-01-M&W
Source #: 20762B
Master Calibration Performed: Fri Dec 10 13:06:08 2021

Master Calibration

	Density		Far Detector	Near Detector	
Magnesium	1.755	g/cc	3559.05	2566.81	cps
Aluminum	2.675	g/cc	664.63	1636.12	cps
Spine Angle = 74.98			Density/Spine Ratio = 0.530		
	Size		Reading		
Small Ring	8.00	in	1.16		
Large Ring	13.00	in	1.01		

Compensated Neutron Calibration Report

Serial-Model: 207-MW-M&W
Source #: 100046B
Master Calibration Performed: Mon Nov 29 15:06:24 2021

Master Calibration

Detector	Readings	Target	Normalization
Short Space	6240.00 cps	1000.00 cps	1.6025
Long Space	460.00 cps	1000.00 cps	1.9500

Gamma Ray Calibration Report

Serial Number: 101
Tool Model: M&W
Performed: Mon Jan 24 19:14:46 2022

Calibrator Value: 500.0 GAPI

Background Reading: 24.0 cps
Calibrator Reading: 637.0 cps

Sensitivity: 0.5500 GAPI/cps



Company Griffin Management LLC
Well Amber #1
Field Turkey Creek Camp
County Pratt
State Kansas