



**COMPENSATED
DENSITY/NEUTRON
LOG**

Company	PALOMINO PETROLEUM, INC.	
Well	FAY #3	
Field	BROUGHTON NORTHWEST	
County	LANE	
State	KANSAS	
Company	PALOMINO PETROLEUM, INC.	
Well	FAY #3	
Field	BROUGHTON NORTHWEST	
County	LANE	
State	KANSAS	
Location:	API #: 15-101-22664-0000	Other Services DIL/MEL
	836' FNL & 2566' FEL	
Permanent Datum	GROUND LEVEL	Elevation
Log Measured From	KELLY BUSHING 11' A.G.L.	K.B. 2596
Drilling Measured From	KELLY BUSHING	D.F. 2594
		G.L. 2585

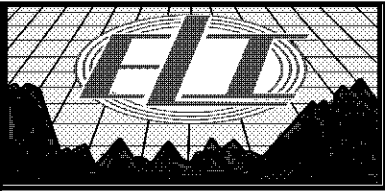
Date	2/2/22	
Run Number	ONE	
Depth Driller	4555	
Depth Logger	4554	
Bottom Logged Interval	4530	
Top Log Interval	3600	
Casing Driller	8 5/8" @ 221	
Casing Logger	221	
Bit Size	7 7/8	
Type Fluid in Hole	CHEMICAL MUD	CHLORIDES 3500 PPM
Density / Viscosity	9.4/55	
PH / Fluid Loss	10.5/8.8	
Source of Sample	FLOWLINE	
Rm @ Meas. Temp	1.4@60F	
Rmt @ Meas. Temp	1.05@60F	
Rmc @ Meas. Temp	1.88@60F	
Source of Rmf / Rmc	MEASUREMENT	
Rm @ BHT	.69@121	
Time Circulation Stopped	2 HOURS	
Time Logger on Bottom	////	
Maximum Recorded Temperature	121F	
Equipment Number	3802	
Location	HAYS, KANSAS	
Recorded By	JASON CAPPELLUCCI	TJ DREILING
Witnessed By	RYAN SEIB	

<<< Fold Here >>>

All interpretations are opinions based on inferences from electrical or other measurements and we cannot and do not guarantee the accuracy or correctness of any interpretation, and we shall not, except in the case of gross or willful negligence on our part, be liable or responsible for any loss, costs, damages, or expenses incurred or sustained by anyone resulting from any interpretation made by any of our officers, agents or employees. These interpretations are also subject to our general terms and conditions set out in our current Price Schedule.

Comments

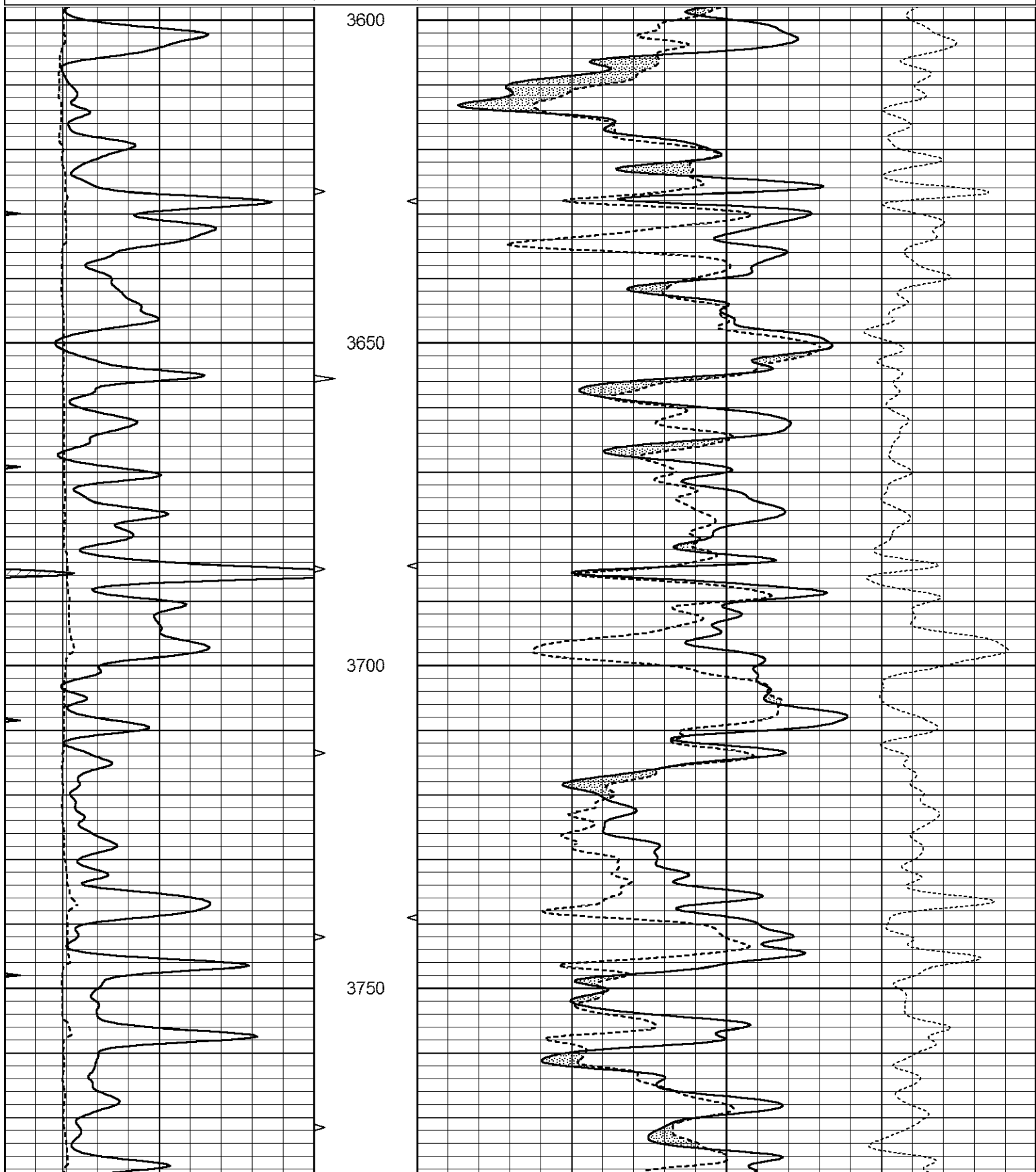
THANK YOU FOR USING ELI WIRELINE SERVICES, HAYS, KS. (785) 628-6395
 DIRECTIONS
 FROM UTTICA KS, -WEST TO RED CHIEF RD, -NORTH 2.6 MILES TO COUNTY RD 285, -EAST TO
 TOMAHAWK RD, -1/2 MILE EAST, -SOUTH INTO

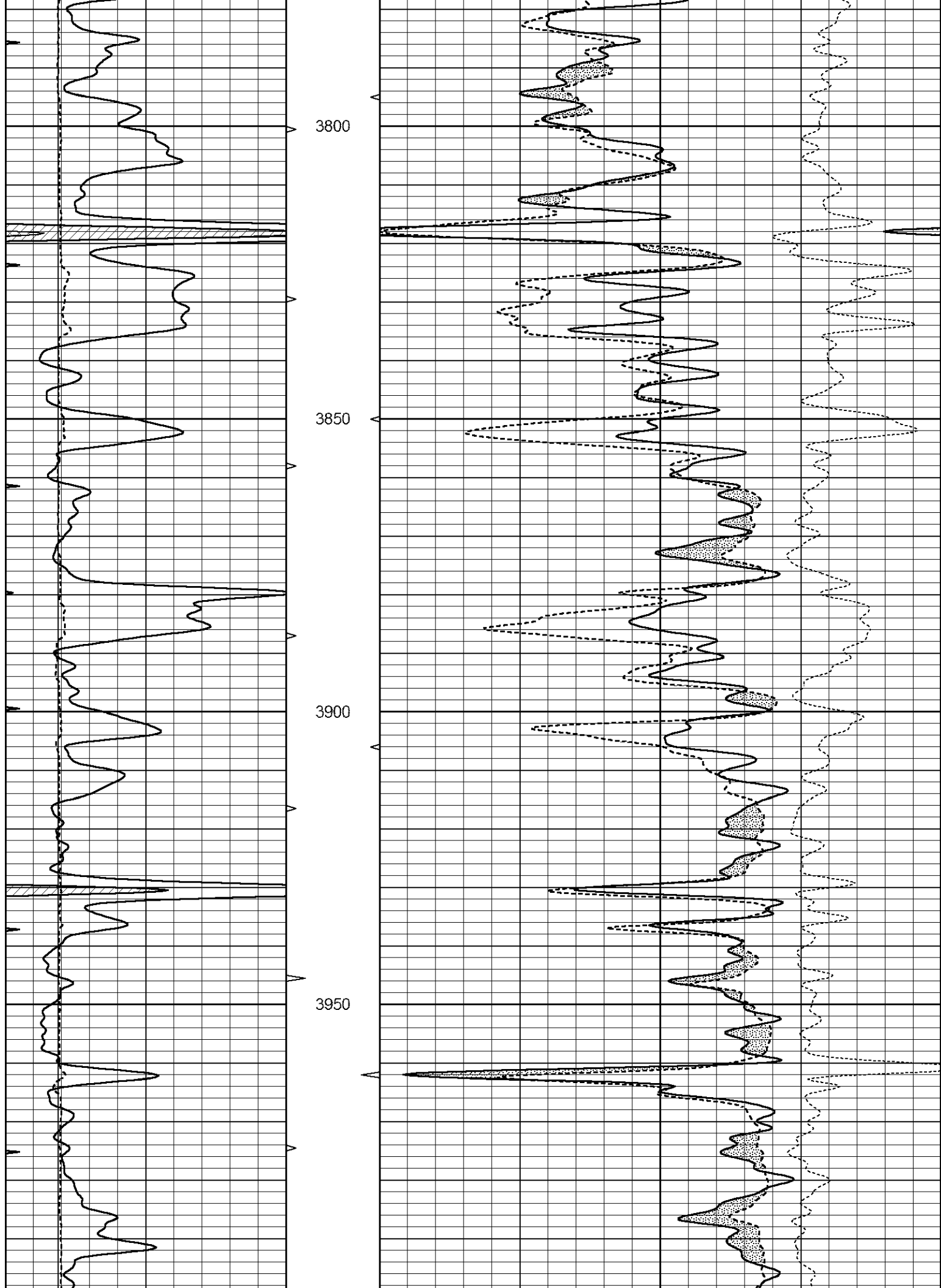


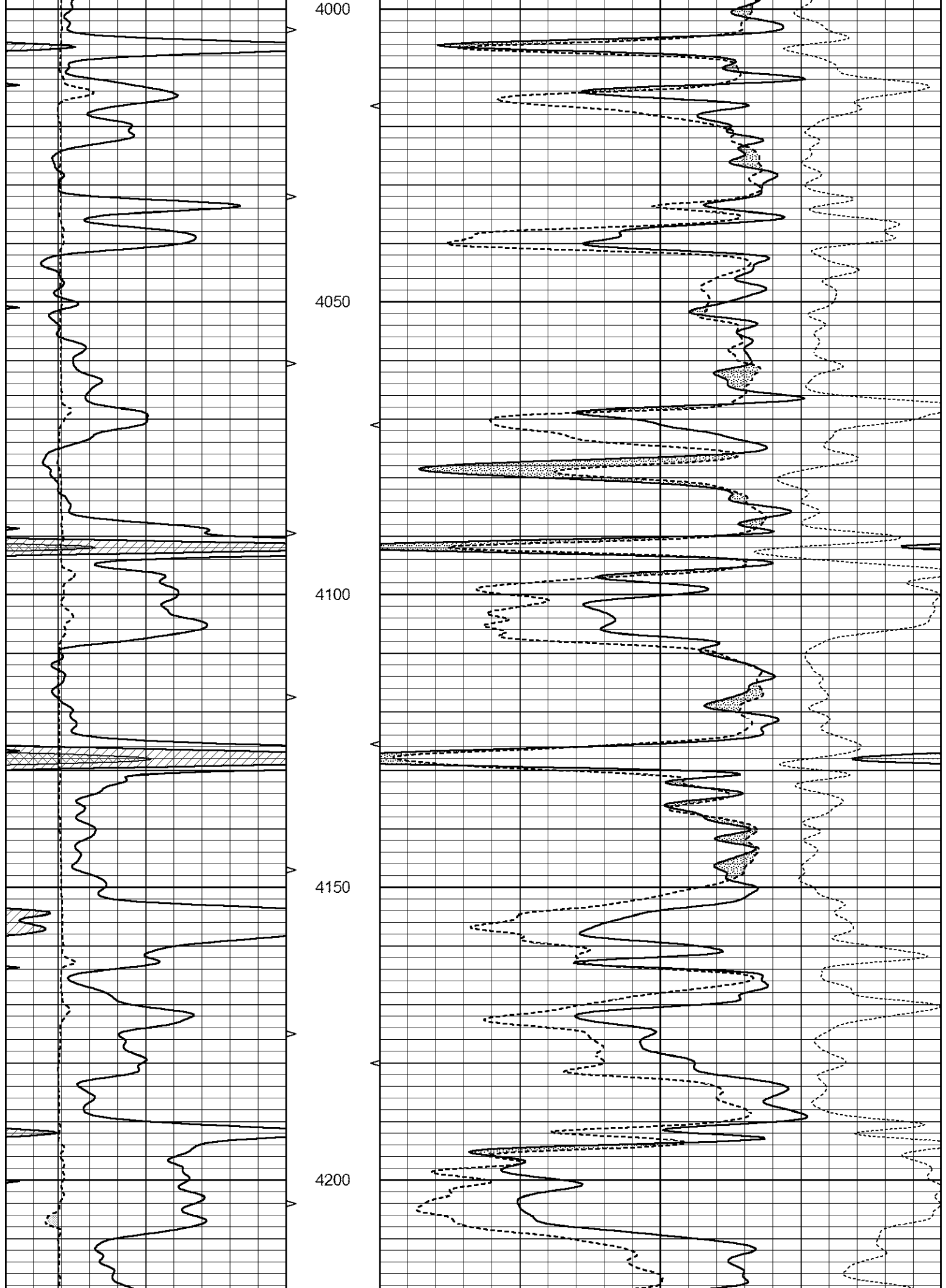
MAIN SECTION

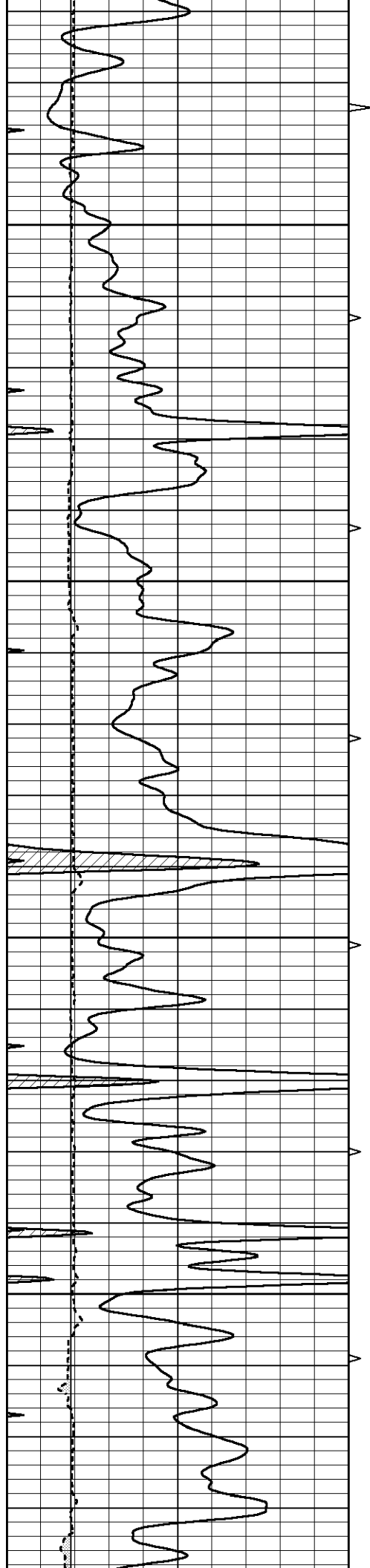
Database File 6234ddn.db
 Dataset Pathname pass3.1
 Presentation Format _den_neu
 Dataset Creation Wed Feb 02 05:10:11 2022
 Charted by Depth in Feet scaled 1:240

0	GAMMA RAY (GAPI)	150	AVTX	30	COMPENSATED DENSITY (pu)	-10
0	MINMK	20	10 (ft3) 0	30	COMPENSATED NEUTRON (pu)	-10
6	CALIPER (in)	16	BVTX		-0.25 CORRECTION (g/cc)	0.25
			0 (ft3) 10			







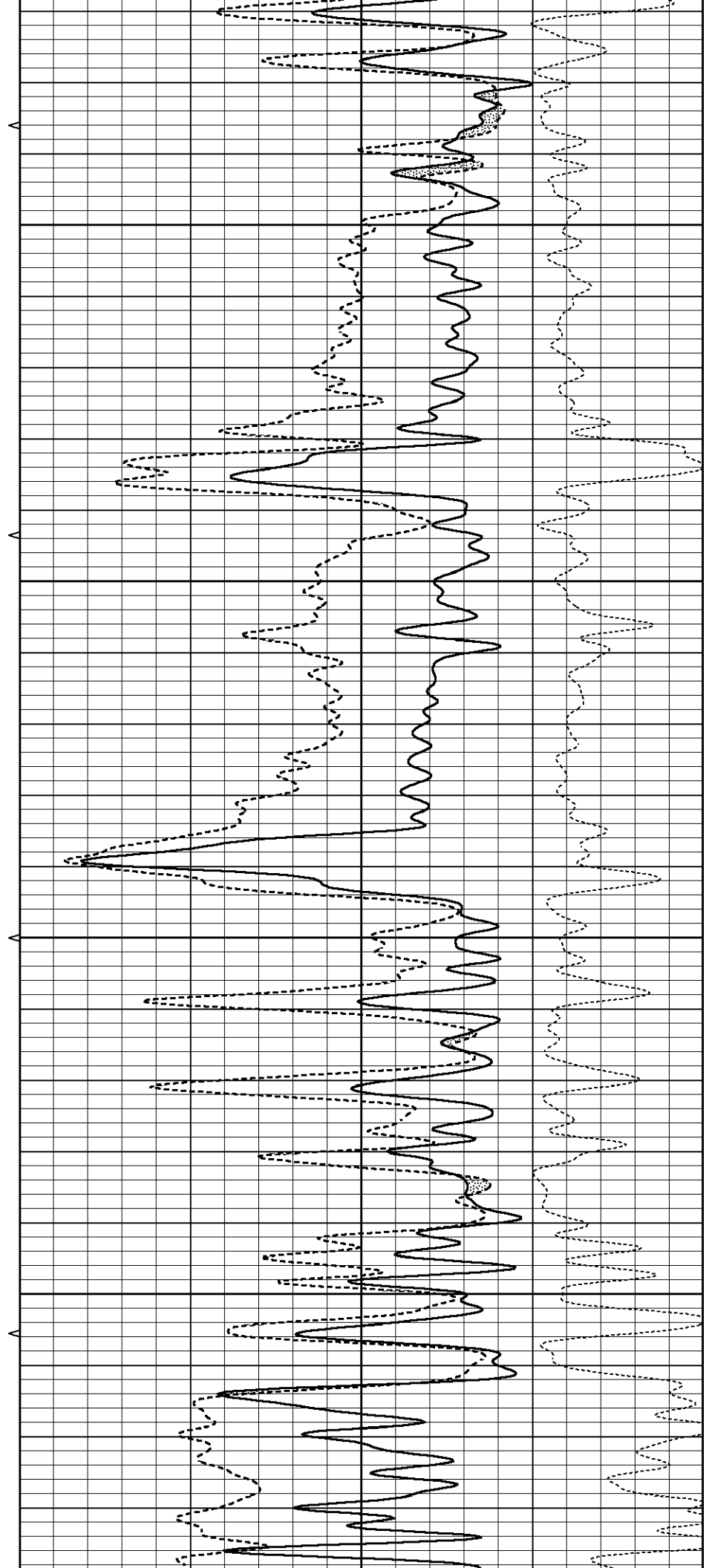


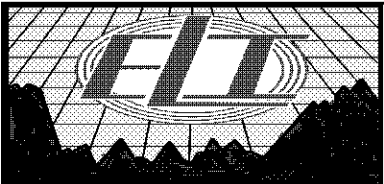
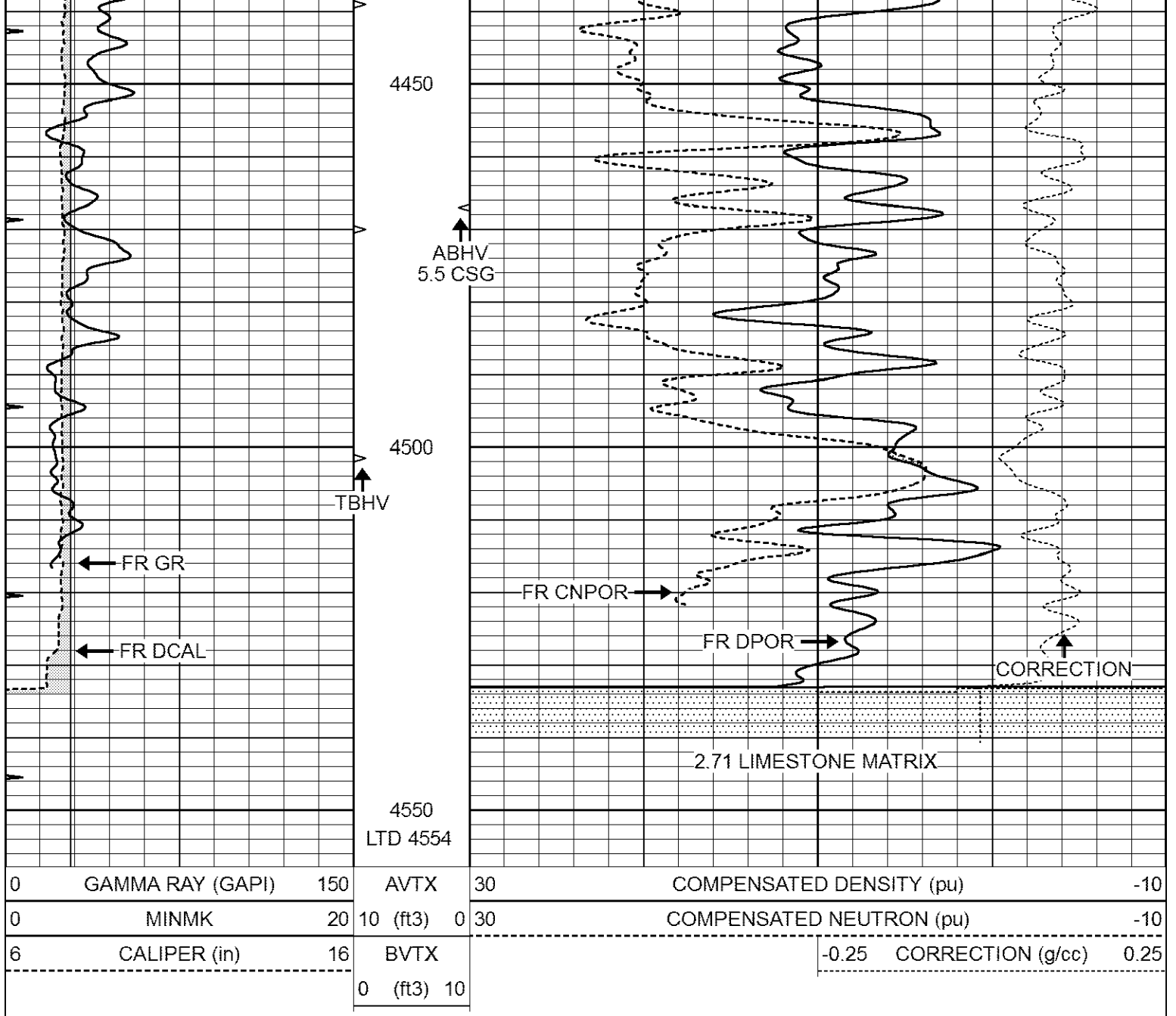
4250

4300

4350

4400

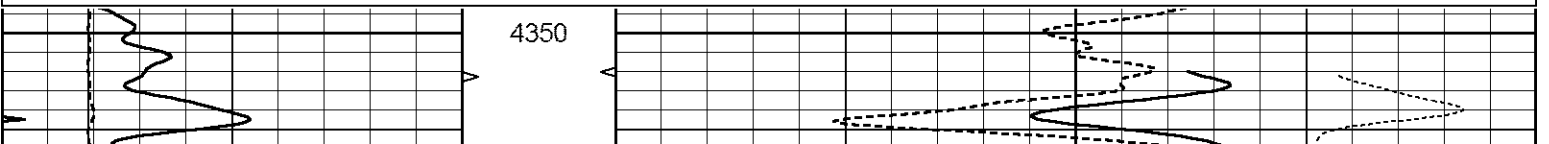


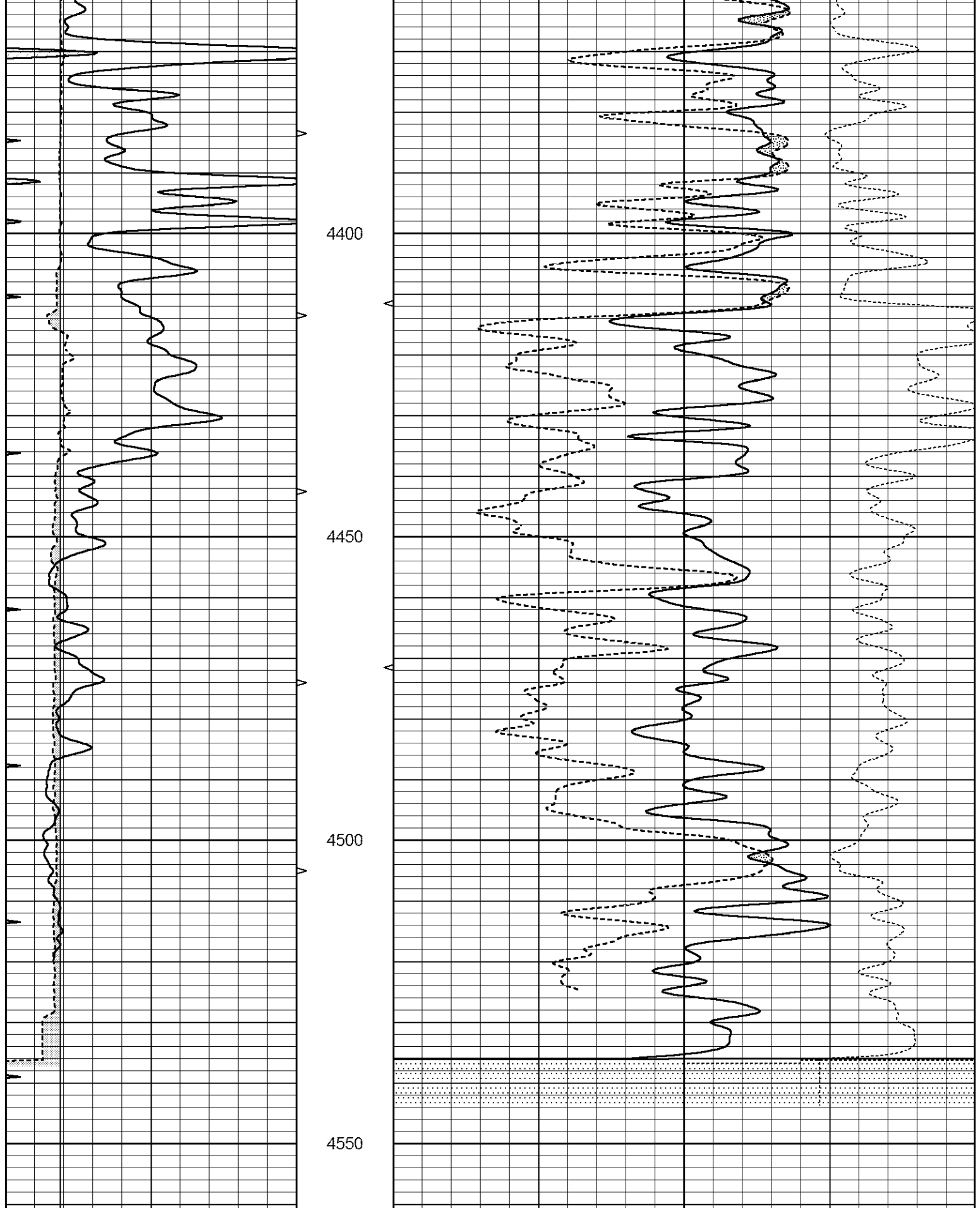


REPEAT SECTION

Database File 6234ddn.db
 Dataset Pathname pass2.2
 Presentation Format _den_neu
 Dataset Creation Wed Feb 02 05:06:37 2022
 Charted by Depth in Feet scaled 1:240

0	GAMMA RAY (GAPI)	150	AVTX	30	COMPENSATED DENSITY (pu)	-10
0	MINMK	20	10 (ft3)	0 30	COMPENSATED NEUTRON (pu)	-10
6	CALIPER (in)	16	BVTX		-0.25 CORRECTION (g/cc)	0.25
			0 (ft3)	10		





0	GAMMA RAY (GAPI)	150	AVTX	30	COMPENSATED DENSITY (pu)	-10	
0	MINMK	20	10 (ft3)	0 30	COMPENSATED NEUTRON (pu)	-10	
6	CALIPER (in)	16	BVTX		-0.25	CORRECTION (g/cc)	0.25
			0 (ft3)	10			

Calibration Report

Database File 6234ddn.db
 Dataset Pathname pass2.2
 Dataset Creation Wed Feb 02 05:06:37 2022

Dual Induction Calibration Report

Serial-Model: FW1410-55-Probe
 Surface Cal Performed: Sat Jan 29 11:57:42 2022
 Downhole Cal Performed: Tue Feb 19 11:44:24 2019
 After Survey Verification Performed: Tue Feb 19 11:44:27 2019

Surface Calibration

Loop:	Readings			References			Results	
	Air	Loop		Air	Loop		m	b
Deep	0.011	0.656	V	1.000	400.000	mmho/m	618.595	-5.524
Medium	-0.000	0.731	V	1.000	464.000	mmho/m	632.856	1.197
Internal:	Zero	Cal		Zero	Cal		m	b
Deep	0.007	0.649	V	0.000	400.000	mmho/m	623.784	-4.595
Medium	0.004	0.743	V	0.000	464.000	mmho/m	627.284	-2.251

Downhole Calibration

	Readings			References			Results	
	Zero	Cal		Zero	Cal		m'	b'
Deep	-0.824	395.917	mmho/m	-0.976	397.550	mmho/m	1.004	-0.149
Medium	3.565	471.327	mmho/m	3.468	471.590	mmho/m	1.001	-0.099
LL3		7.503	V		1500.000	Ohm-m		
		0.001	V		20.000	Ohm-m		
		-7.481	V		3745.000	mmho-m		

After Survey Verification

	Readings			Targets			Results	
	Zero	Cal		Zero	Cal		m'	b'
Deep	0.000	0.000	mmho/m	-0.824	395.917	mmho/m	1.000	0.000
Medium	0.000	0.000	mmho/m	3.565	471.327	mmho/m	1.000	0.000
LL3		0.000	Ohm-m		1500.000	Ohm-m		
		0.000	Ohm-m		20.000	Ohm-m		
		0.000	mmho-m		3745.000	mmho-m		

Litho Density Calibration Report

Serial: 140703
 Model: V4_10P
 Source Number: 74GBq-19

Master Calibration

Performed: Tue Jan 25 14:00:06 2022

	Background	Aluminum	Magnesium	
Window 1	536.63	5366.27	23525.73	cps
Window 2	42.91	1241.07	5903.94	cps
Window 4	234.22	1197.63	5056.39	cps
Window 5	470.91	9159.65	17426.67	cps
Window 6	30.83	648.89	1219.18	cps
Window 8	256.26	4659.94	9003.51	cps
Bulk Density	-	2.6020	1.6830	g/cc
Pe	-	3.0000	2.5070	b/e

LS Alpha: : -1.8361
 LS Beta: : 117533.3616

SS Alpha: : -0.7848
 SS Beta: : 35294.5337

LS CPE: : 1.0879
 SS CPE: : 5.9752

Before Survey Background Counts Verification

Performed: Wed Dec 31 18:00:00 1969

Window 1 0.00 cps
 Window 2 0.00 cps
 Window 4 0.00 cps

Window 5 0.00 cps
 Window 6 0.00 cps
 Window 8 0.00 cps

After Survey Background Counts Verification

Performed: Wed Dec 31 18:00:00 1969

Window 1 0.00 cps
 Window 2 0.00 cps
 Window 4 0.00 cps

Window 5 0.00 cps
 Window 6 0.00 cps
 Window 8 0.00 cps

Lithodensity Caliper Calibration

Performed: Tue Jan 25 14:00:06 2022

Results		Readings		References (in)		Gain	Offset
Low	High	Low	High				
10332.0	13596.9	8.0	14.0			0.0	-11.0

Before Survey Caliper Verification

Performed:

	Reference	Reading
Caliper (in)	_____	_____

After Survey Caliper Verification

Performed:

	Reference	Reading
Caliper (in)	_____	_____

Compensated Neutron Calibration Report

Serial Number: 080621PMC
 Tool Model: NABORS

PRE-SURVEY VERIFICATION

Detector	Readings	Measured	Target
Short Space	cps		
Long Space	cps	pu	pu

POST-SURVEY VERIFICATION

Detector	Readings	Measured	Target
Short Space	cps		
Long Space	cps	pu	pu

Gamma Ray Calibration Report

Serial Number: 7
Tool Model: Probe1
Performed: Tue Jan 19 17:50:08 2021

Calibrator Value: 1.0 GAPI

Background Reading: 0.0 cps

Calibrator Reading: 1.0 cps

Sensitivity: 0.5300 GAPI/cps