



**DUAL  
INDUCTION  
LOG**

Company PALOMINO PETROLEUM, INC.  
Well FAY #3  
Field BROUGHTON NORTHWEST  
County LANE  
State KANSAS

Company PALOMINO PETROLEUM, INC.  
Well FAY #3  
Field BROUGHTON NORTHWEST  
County LANE State KANSAS

Location: API #: 15-101-22664-0000  
836' FNL & 2566' FEL  
SEC 10 TWP 16S RGE 27W  
Permanent Datum GROUND LEVEL Elevation 2585  
Log Measured From KELLY BUSHING 11' A.G.L.  
Drilling Measured From KELLY BUSHING  
Elevation  
K.B. 2596  
D.F. 2594  
G.L. 2585

Date	2/2/22		
Run Number	ONE		
Depth Driller	4555		
Depth Logger	4554		
Bottom Logged Interval	4552		
Top Log Interval	0		
Casing Driller	8 5/8" @ 221		
Casing Logger	221		
Bit Size	7 7/8		
Type Fluid in Hole	CHEMICAL MUD	CHLORIDES 3500 PPM	
Density / Viscosity	9.4/55		
PH / Fluid Loss	10.5/8.8		
Source of Sample	FLOWLINE		
Rm @ Meas. Temp	1.4@60F		
Rmt @ Meas. Temp	1.05@60F		
Rmc @ Meas. Temp	1.88@60F		
Source of Rmf / Rmc	MEASUREMENT		
Rm @ BHT	.69@121		
Time Circulation Stopped	2 HOURS		
Time Logger on Bottom	////		
Maximum Recorded Temperature	121F		
Equipment Number	3802		
Location	HAYS, KANSAS		
Recorded By	JASON CAPPELLUCCI	TJ DREILING	
Witnessed By	RYAN SEIB		

<<< Fold Here >>>

All interpretations are opinions based on inferences from electrical or other measurements and we cannot and do not guarantee the accuracy or correctness of any interpretation, and we shall not, except in the case of gross or willful negligence on our part, be liable or responsible for any loss, costs, damages, or expenses incurred or sustained by anyone resulting from any interpretation made by any of our officers, agents or employees. These interpretations are also subject to our general terms and conditions set out in our current Price Schedule.

Comments

THANK YOU FOR USING ELI WIRELINE SERVICES, HAYS, KS. ( 785 ) 628-6395  
DIRECTIONS  
FROM UTTICA KS, -WEST TO RED CHIEF RD, -NORTH 2.6 MILES TO COUNTY RD 285, -EAST TO  
TOMAHAWK RD, -1/2 MILE EAST, -SOUTH INTO

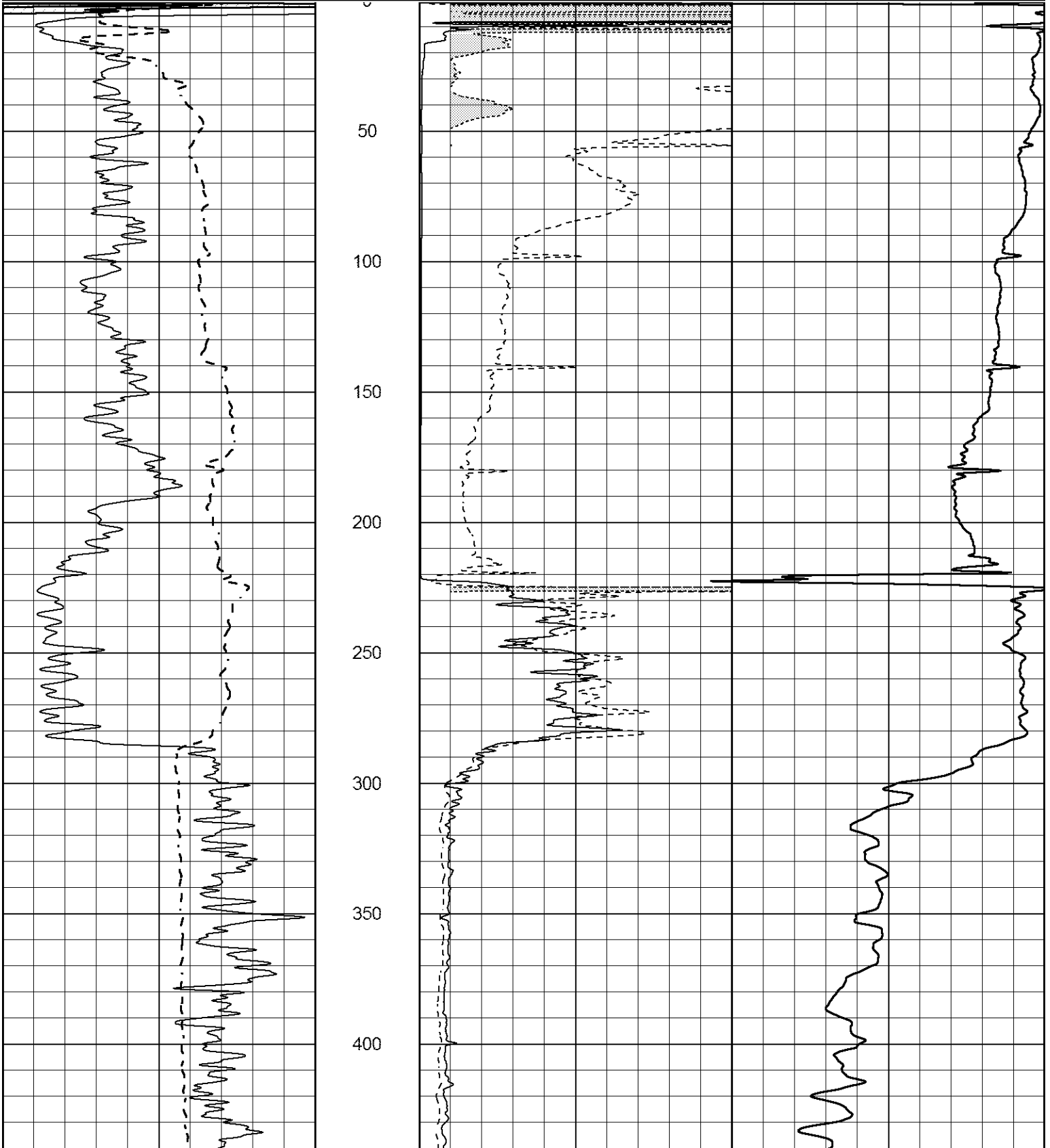


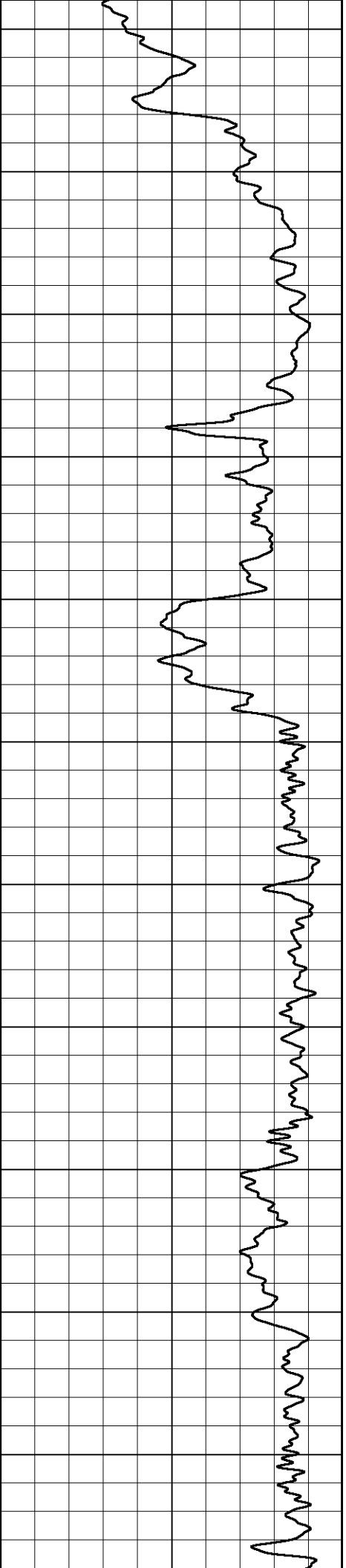
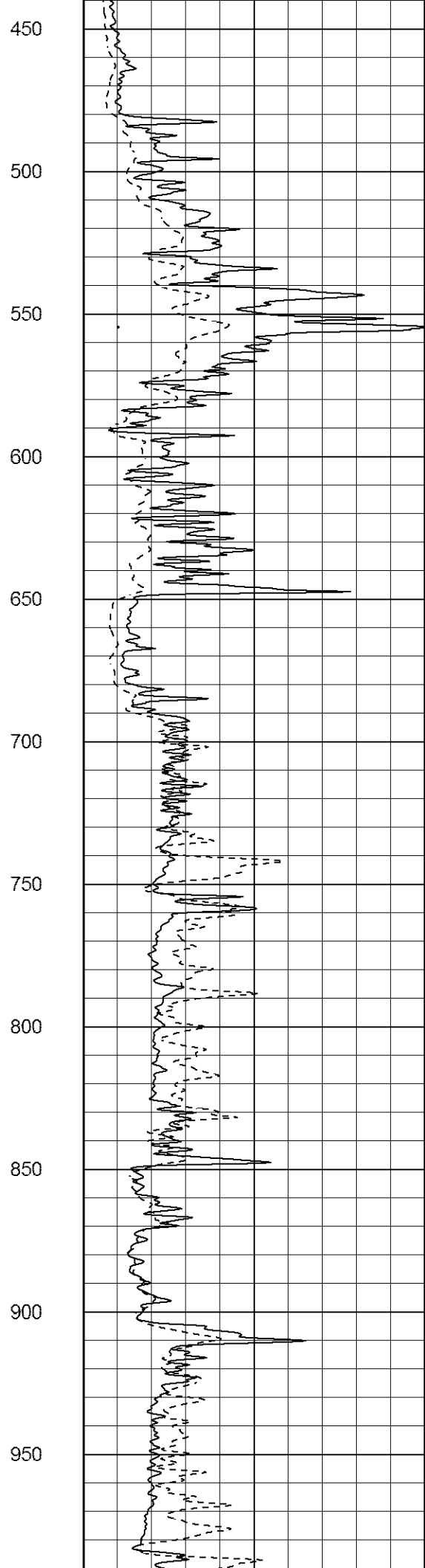
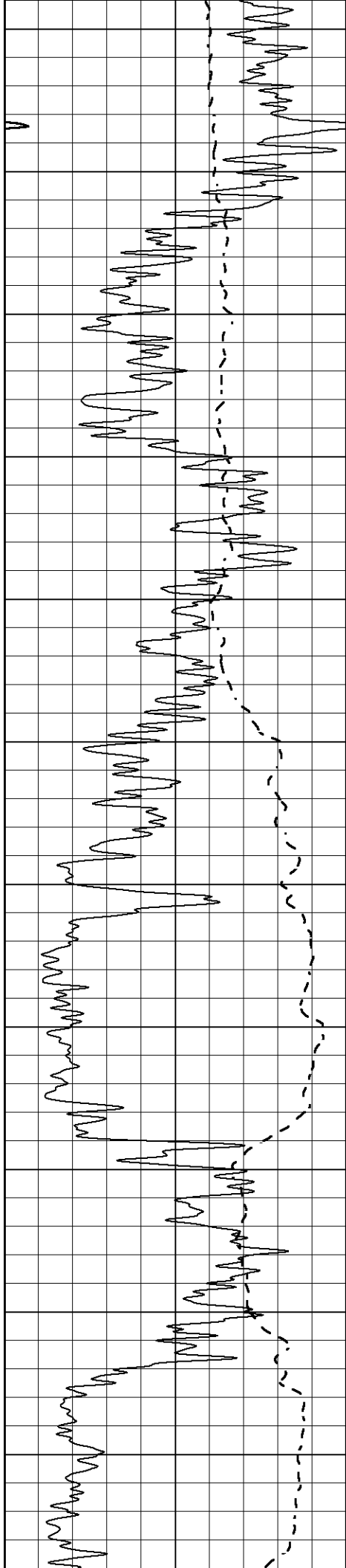
**MAIN SECTION**

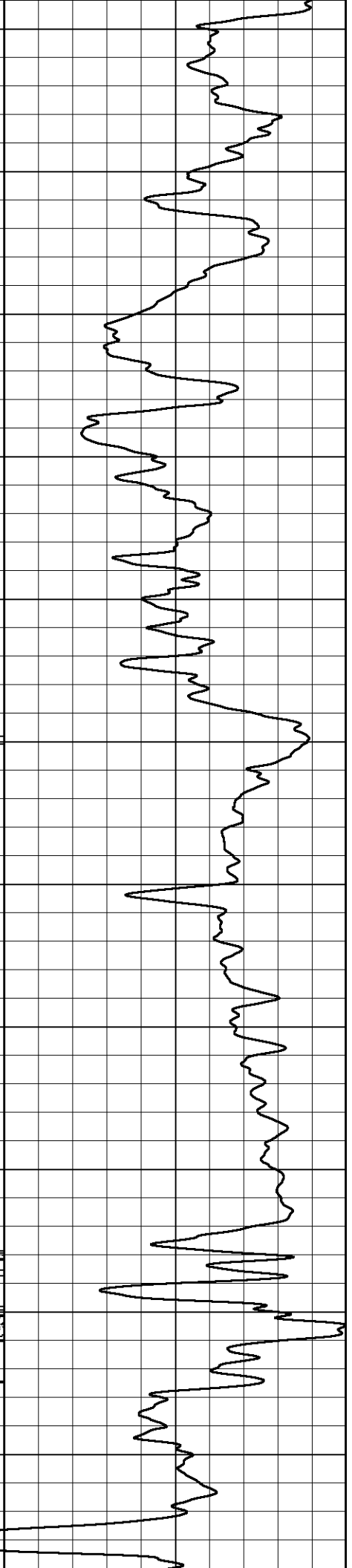
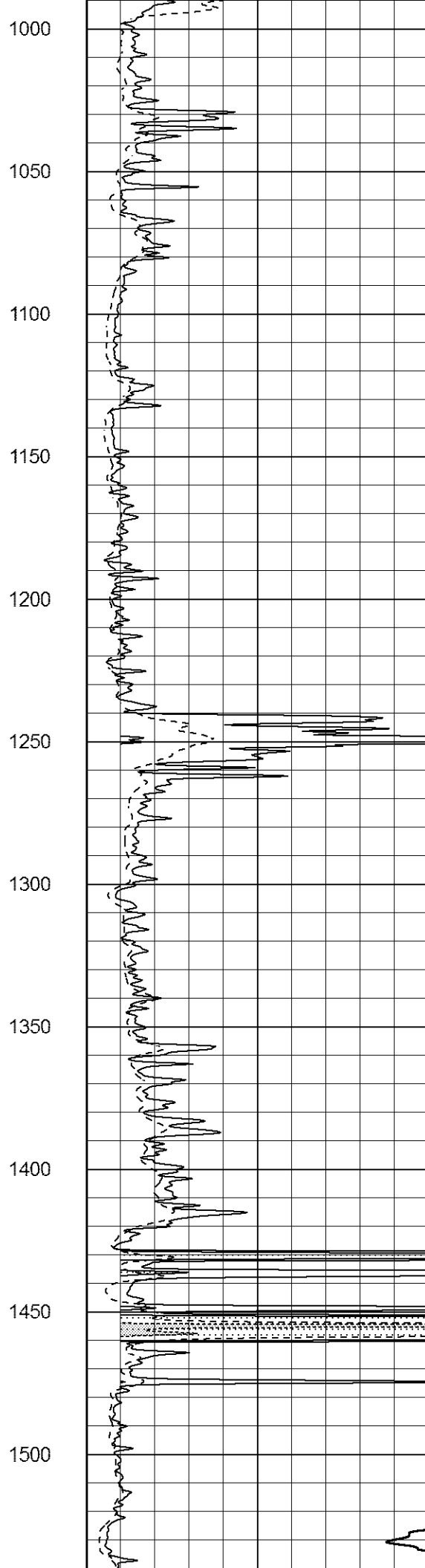
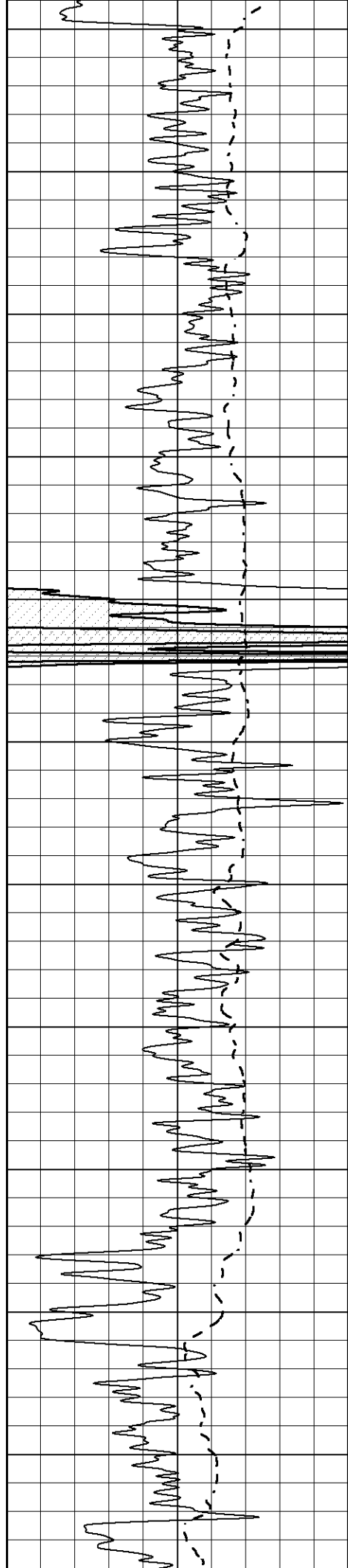
Database File 6234ddn.db  
 Dataset Pathname pass3.3  
 Presentation Format \_dil2  
 Dataset Creation Wed Feb 02 05:52:48 2022  
 Charted by Depth in Feet scaled 1:600

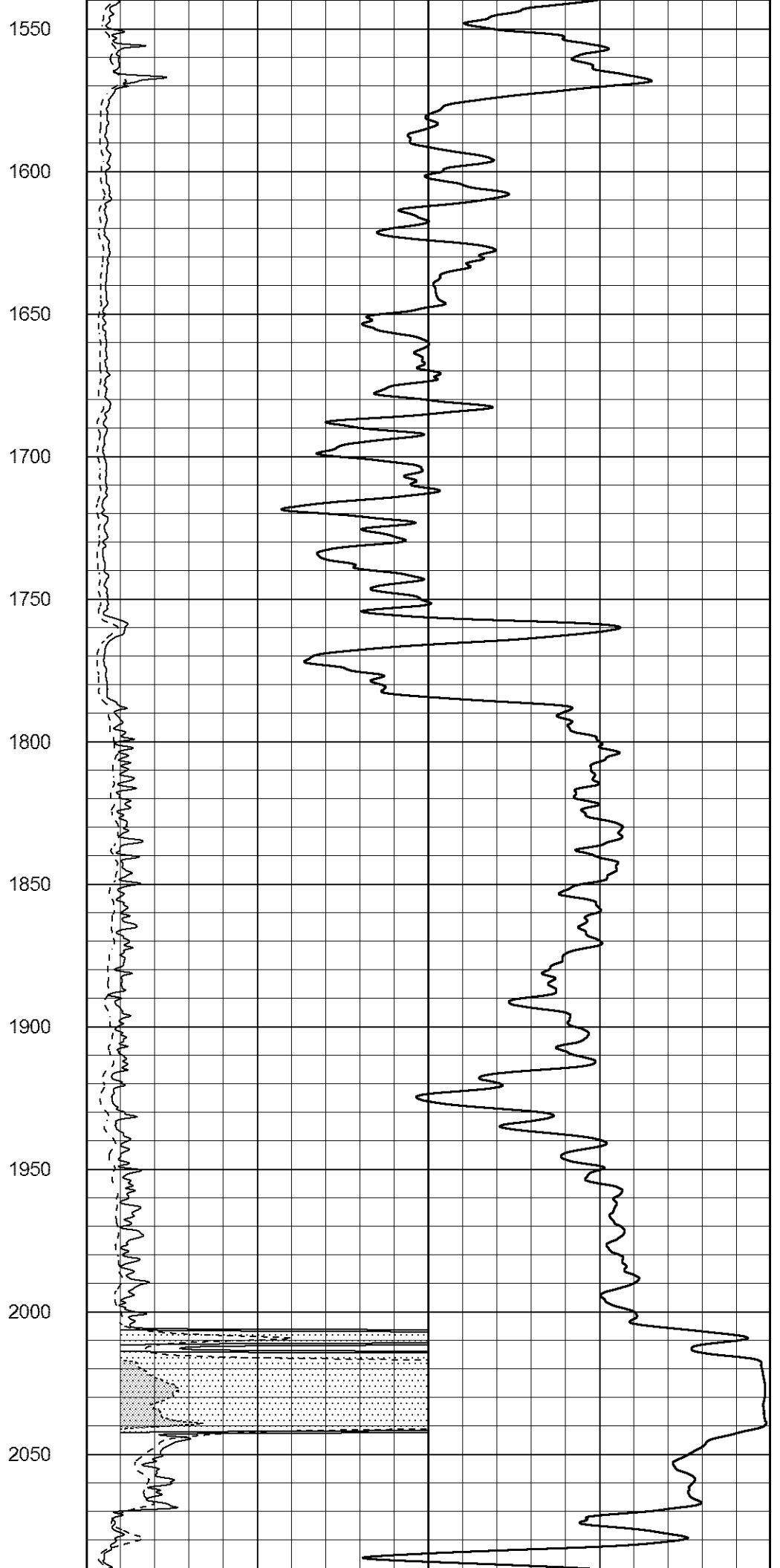
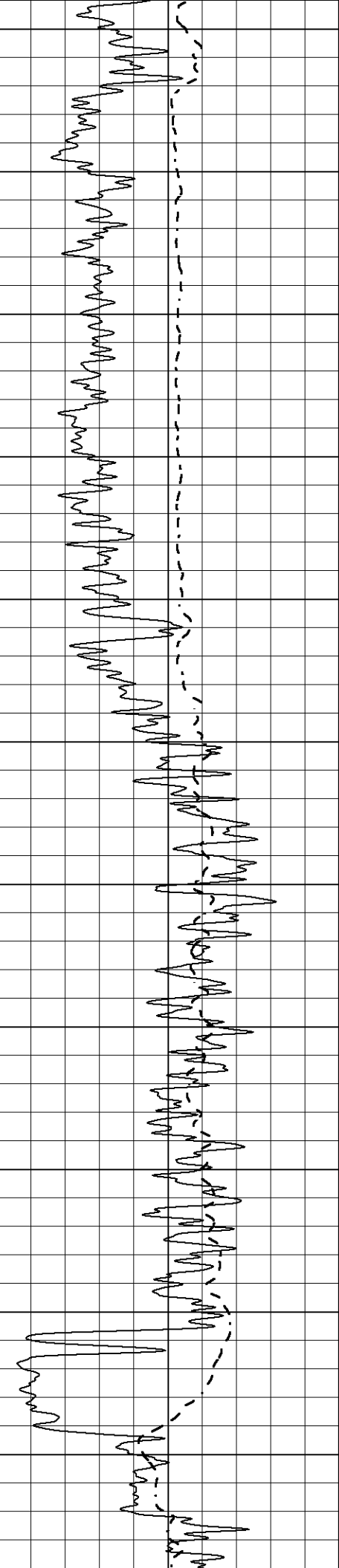
0 Gamma Ray (GAPI) 150  
 -100 SP (mV) 100

1000 CILD (mmho/m) 0  
 0 RLL3 (Ohm-m) 50  
 0 Deep Induction (Ohm-m) 50  
 50 RILD X10 (Ohm-m) 500  
 50 RLL3 X10 (Ohm-m) 500

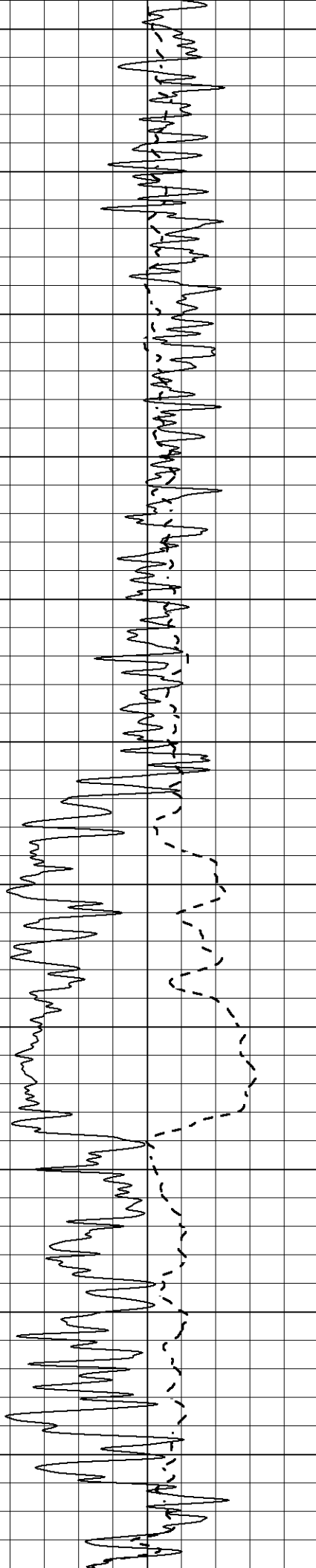
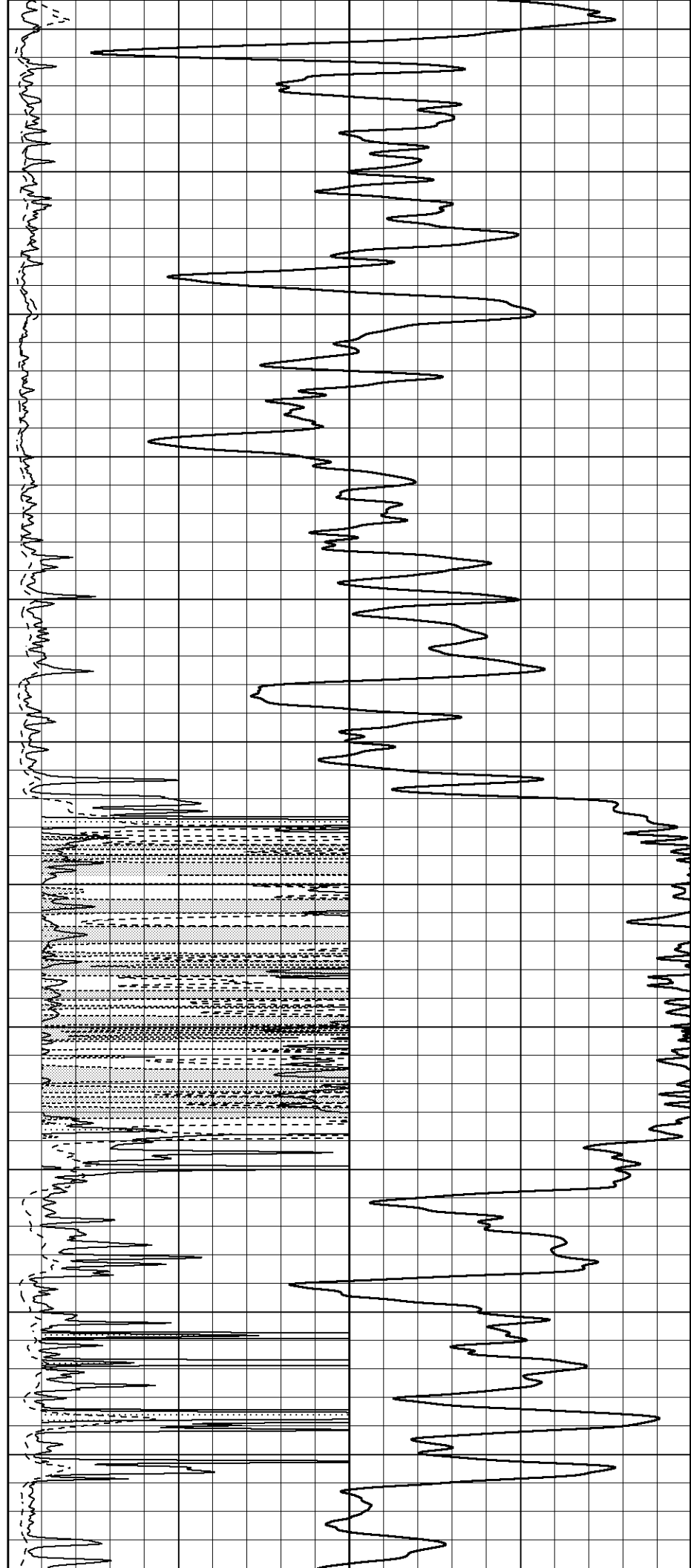








2100  
2150  
2200  
2250  
2300  
2350  
2400  
2450  
2500  
2550  
2600



2650

2700

2750

2800

2850

2900

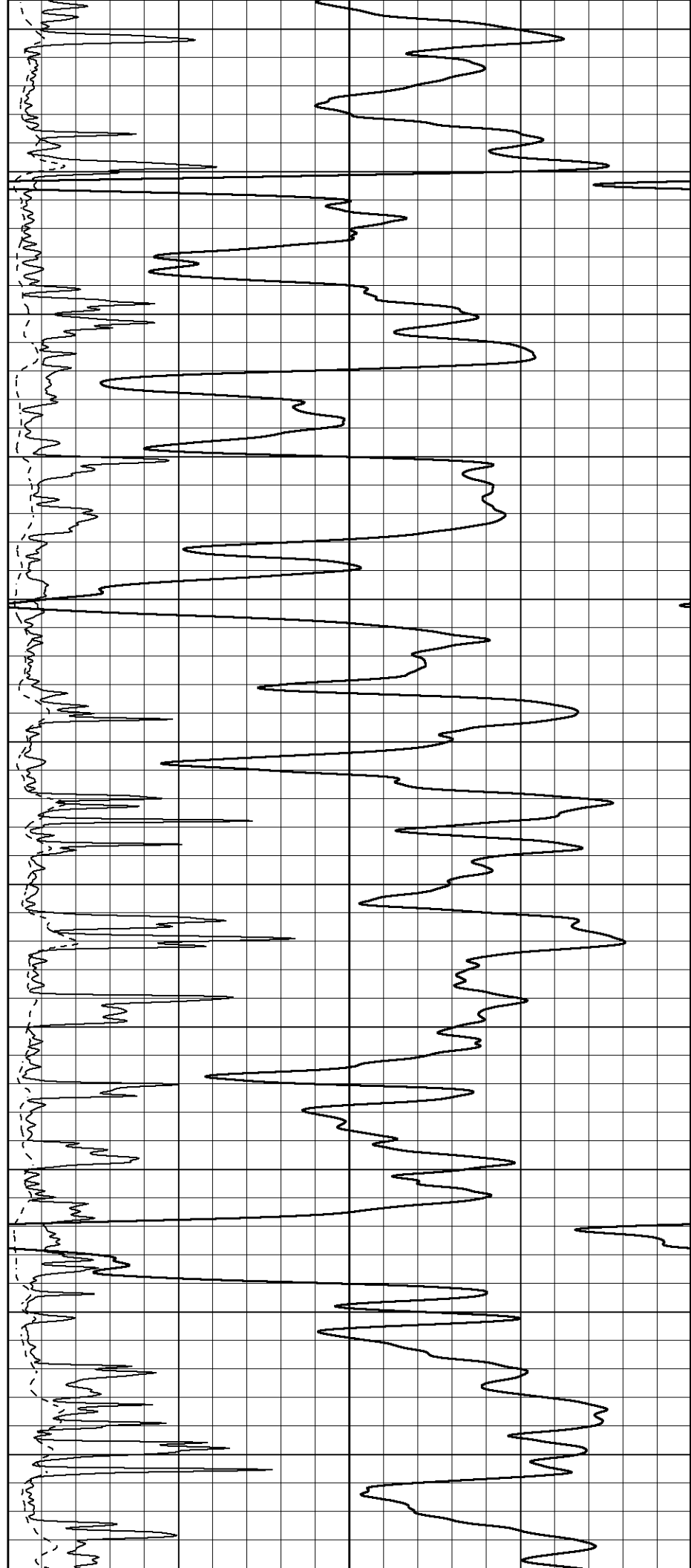
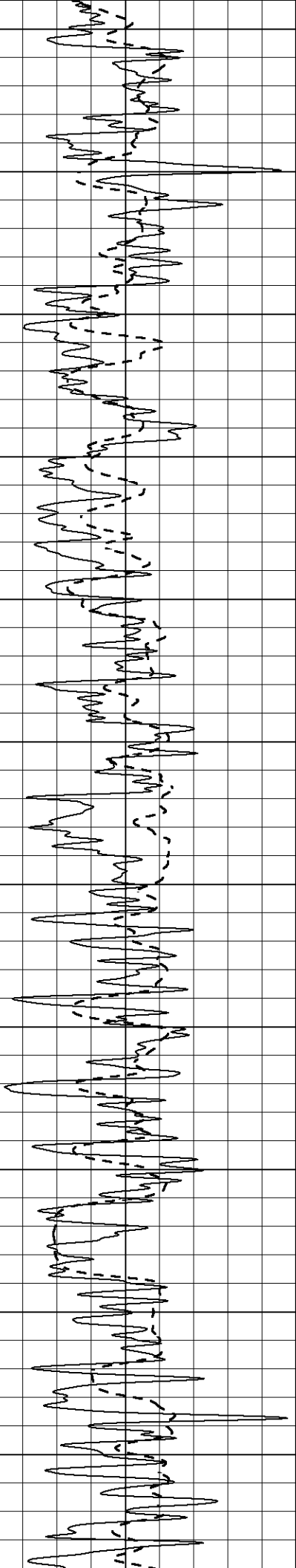
2950

3000

3050

3100

3150



3200

3250

3300

3350

3400

3450

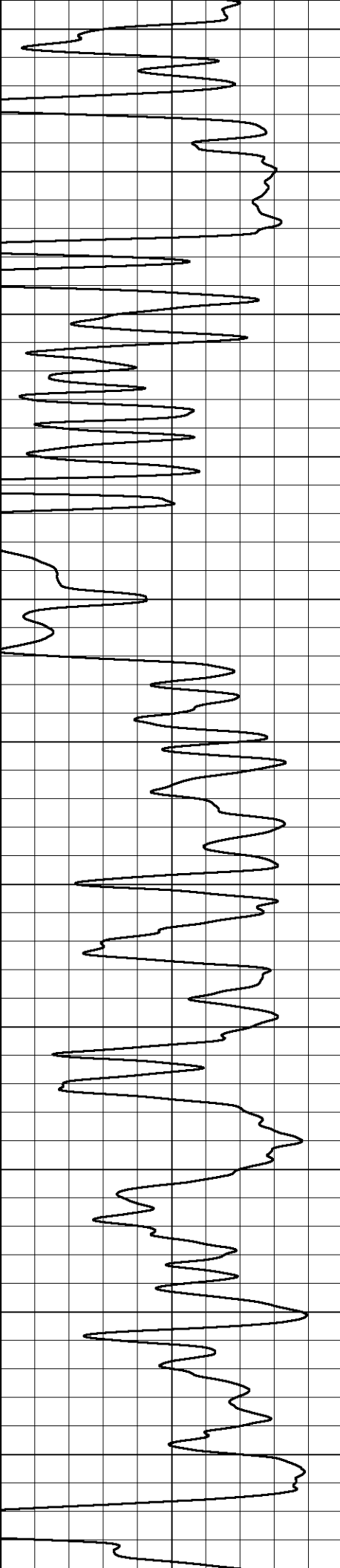
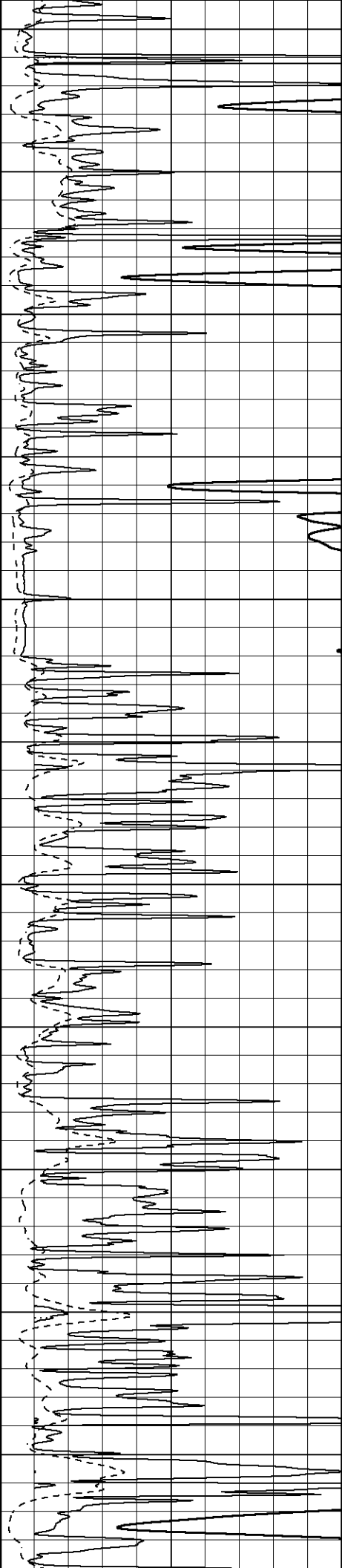
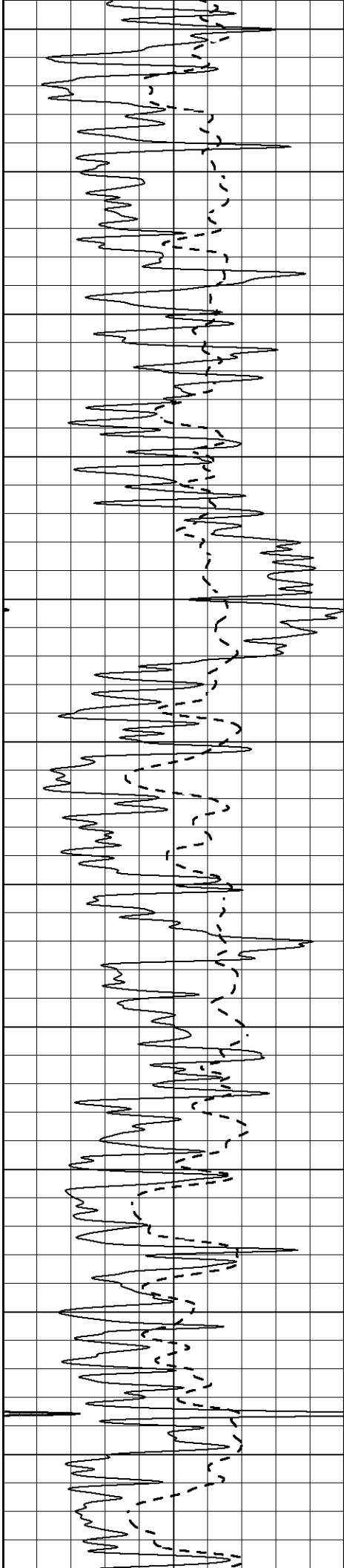
3500

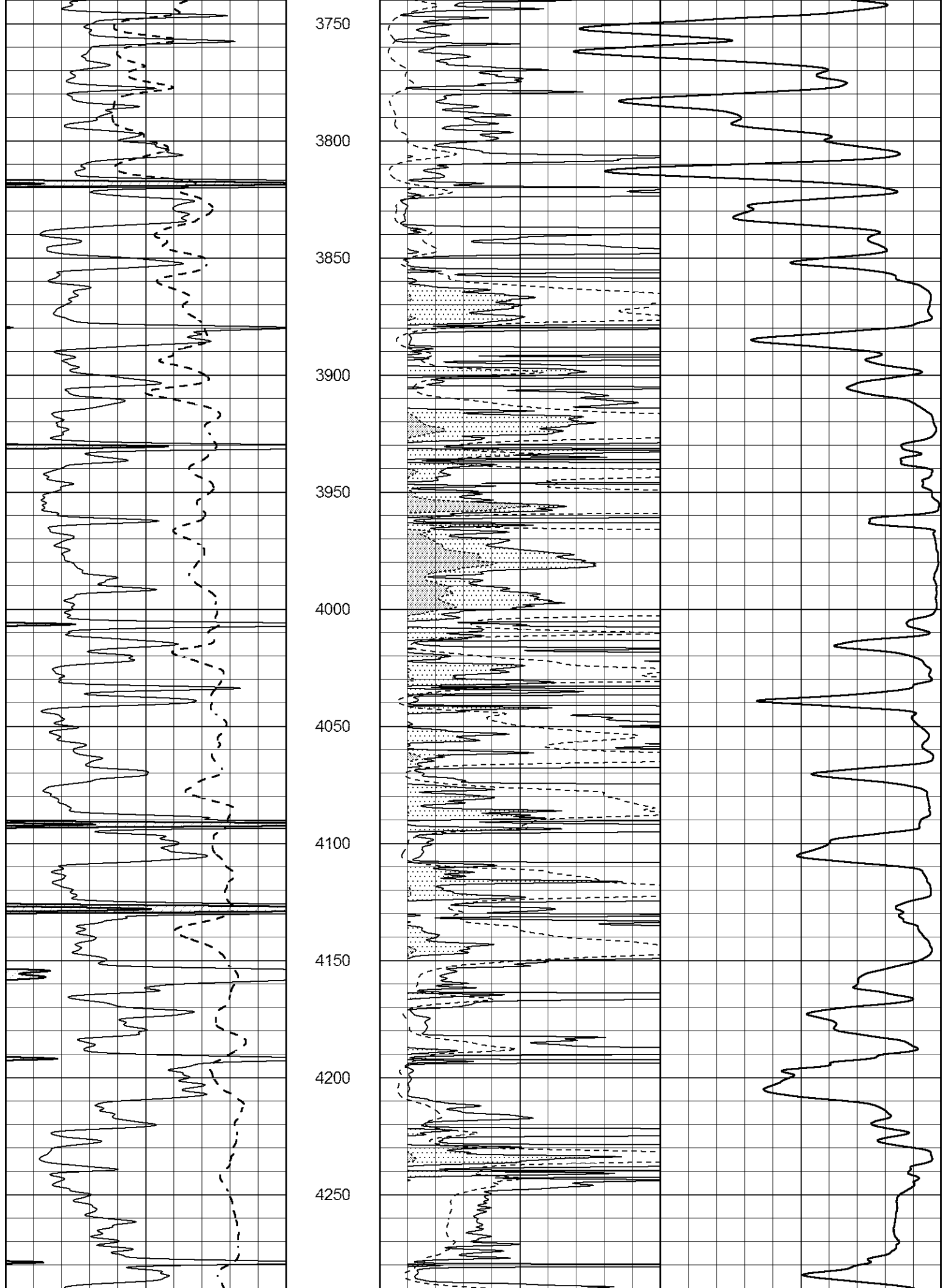
3550

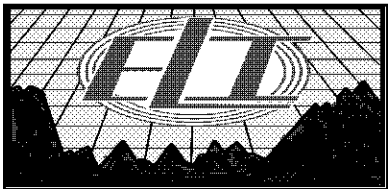
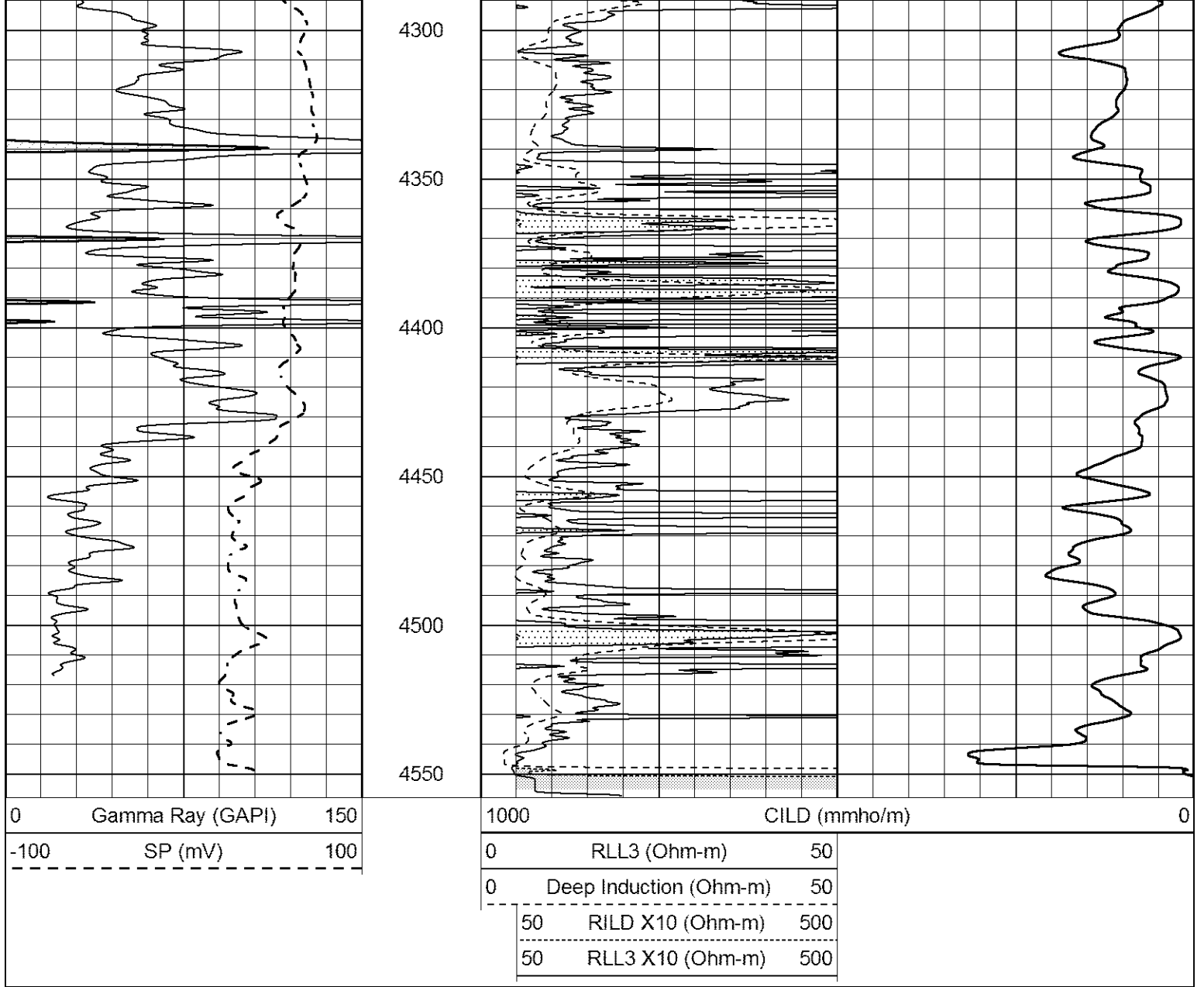
3600

3650

3700

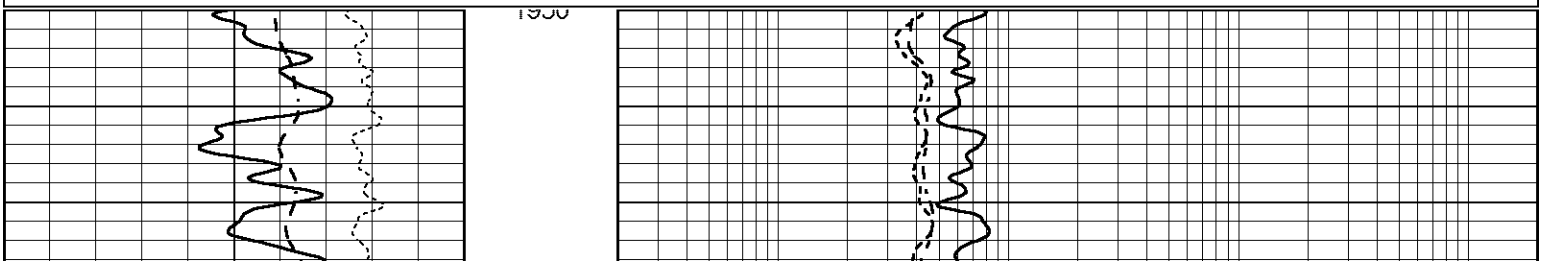
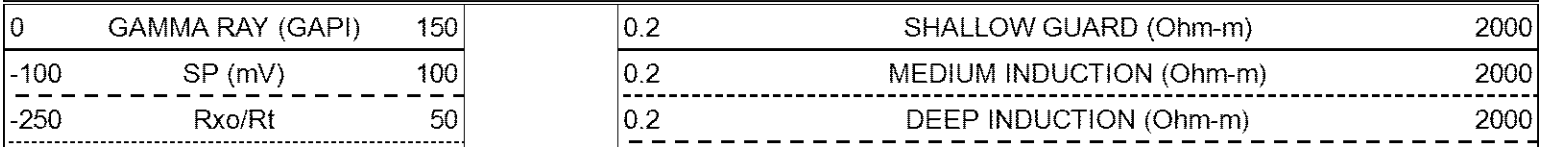


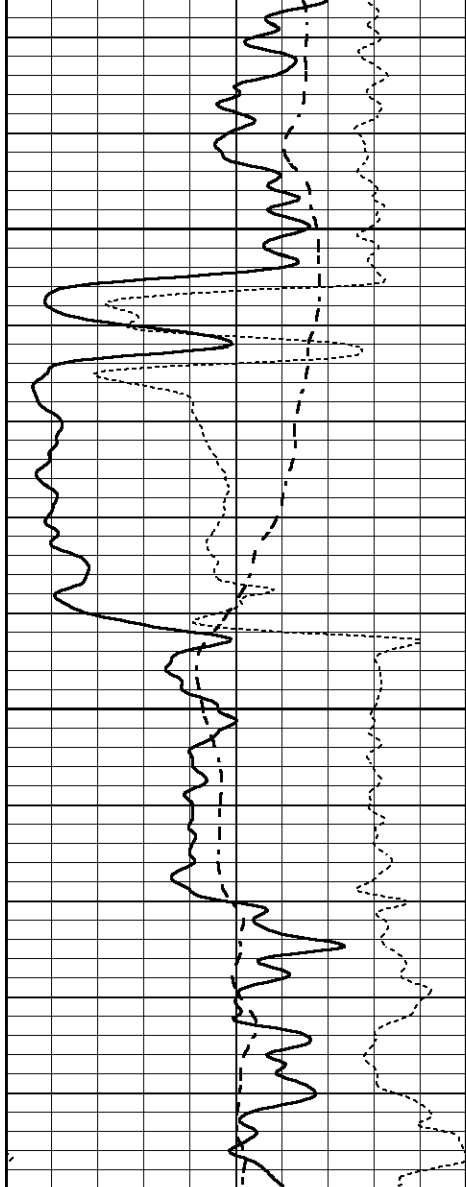




# ANHYDRITE

Database File 6234ddn.db  
 Dataset Pathname pass3.2  
 Presentation Format \_dil  
 Dataset Creation Wed Feb 02 05:26:56 2022  
 Charted by Depth in Feet scaled 1:240



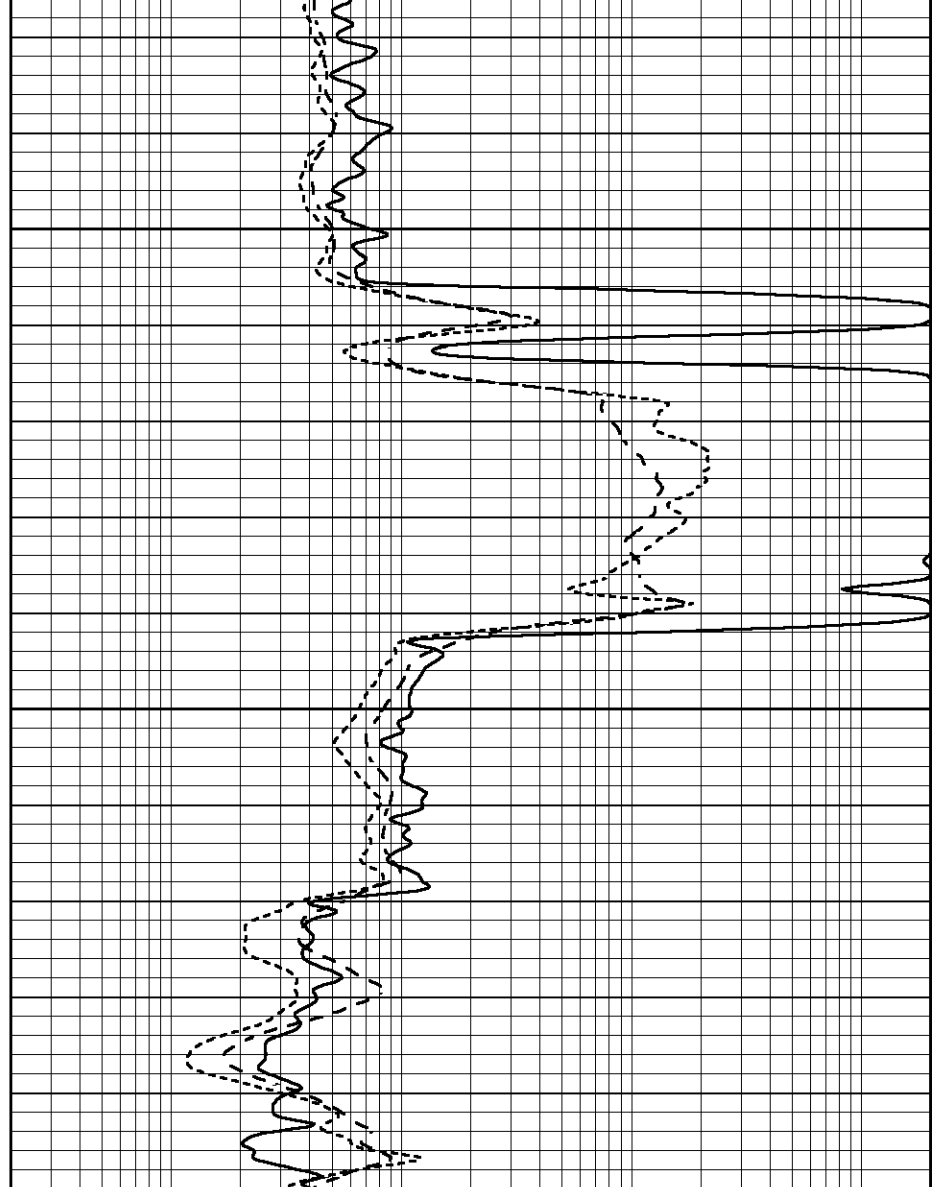


2000

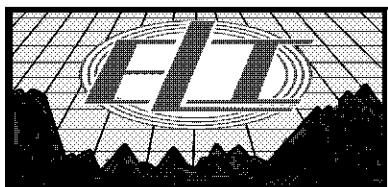
2050

2100

0	GAMMA RAY (GAPI)	150
-100	SP (mV)	100
-250	Rxo/Rt	50



0.2	SHALLOW GUARD (Ohm-m)	2000
0.2	MEDIUM INDUCTION (Ohm-m)	2000
0.2	DEEP INDUCTION (Ohm-m)	2000

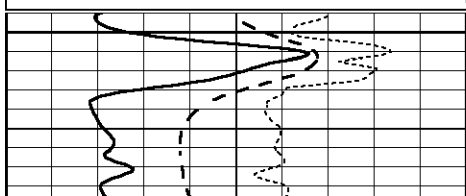


# MAIN SECTION

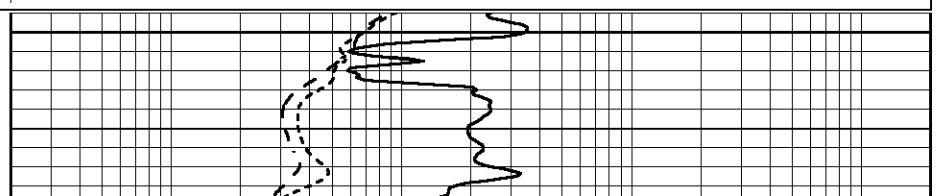
Database File 6234ddn.db  
 Dataset Pathname pass3.1  
 Presentation Format \_dil  
 Dataset Creation Wed Feb 02 05:10:11 2022  
 Charted by Depth in Feet scaled 1:240

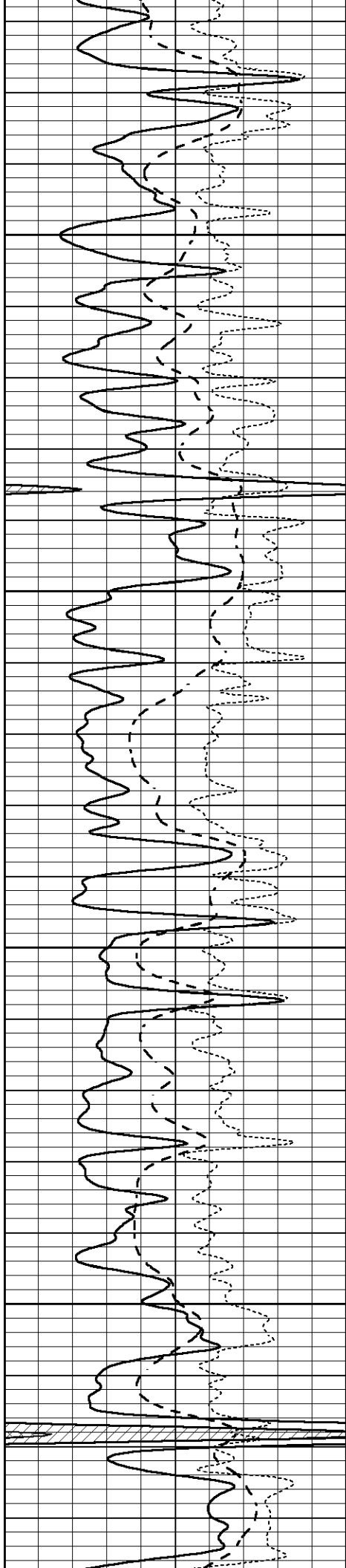
0	GAMMA RAY (GAPI)	150
-100	SP (mV)	100
-250	Rxo/Rt	50

0.2	SHALLOW GUARD (Ohm-m)	2000
0.2	MEDIUM INDUCTION (Ohm-m)	2000
0.2	DEEP INDUCTION (Ohm-m)	2000



3600



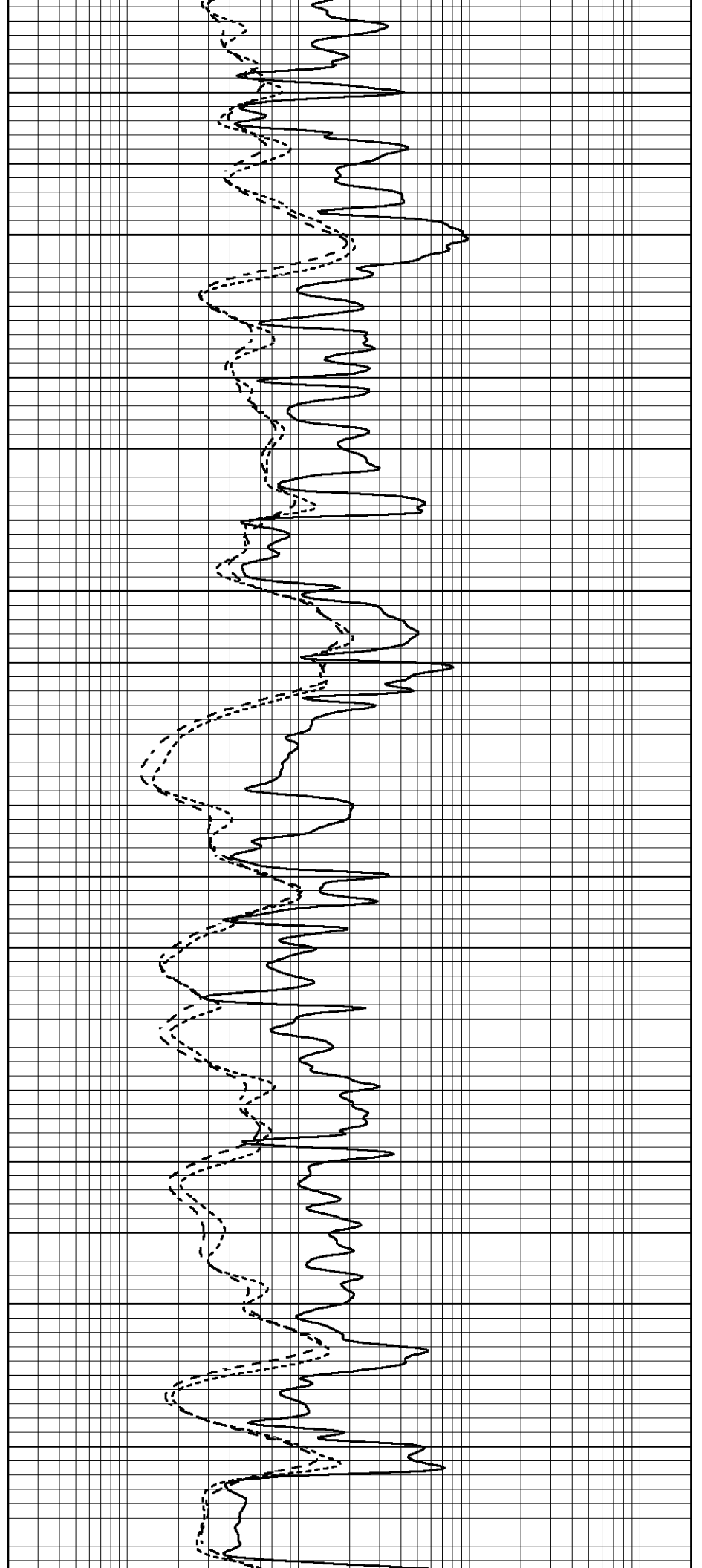


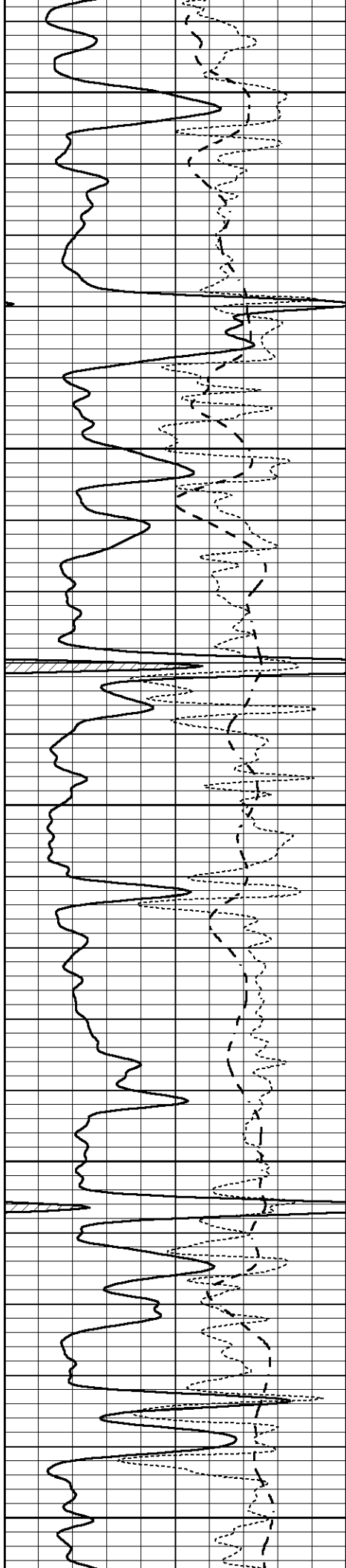
3650

3700

3750

3800





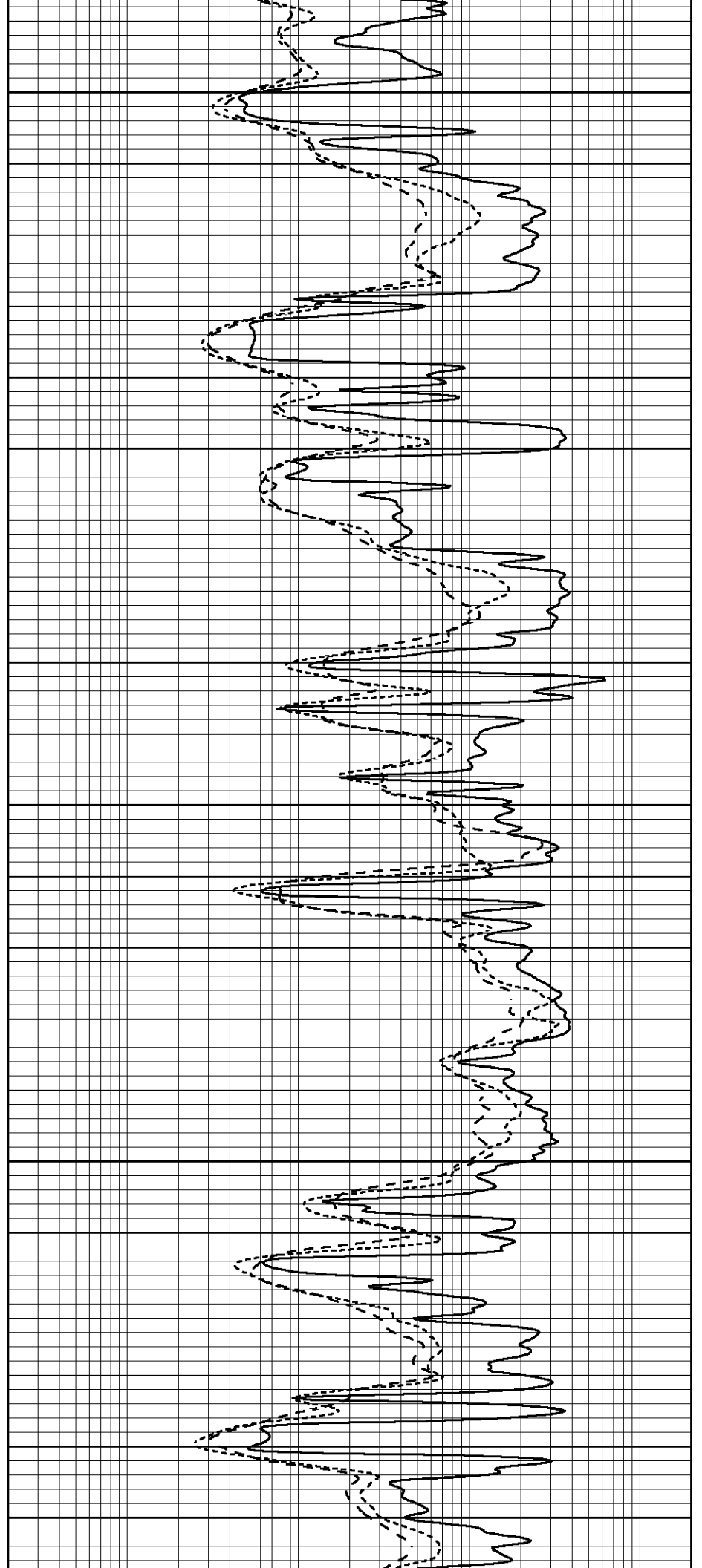
3850

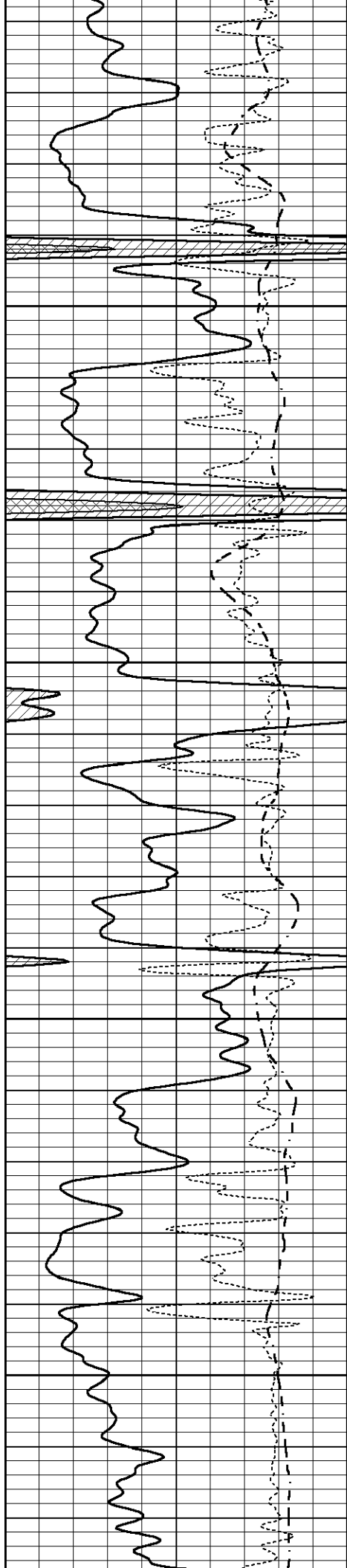
3900

3950

4000

4050



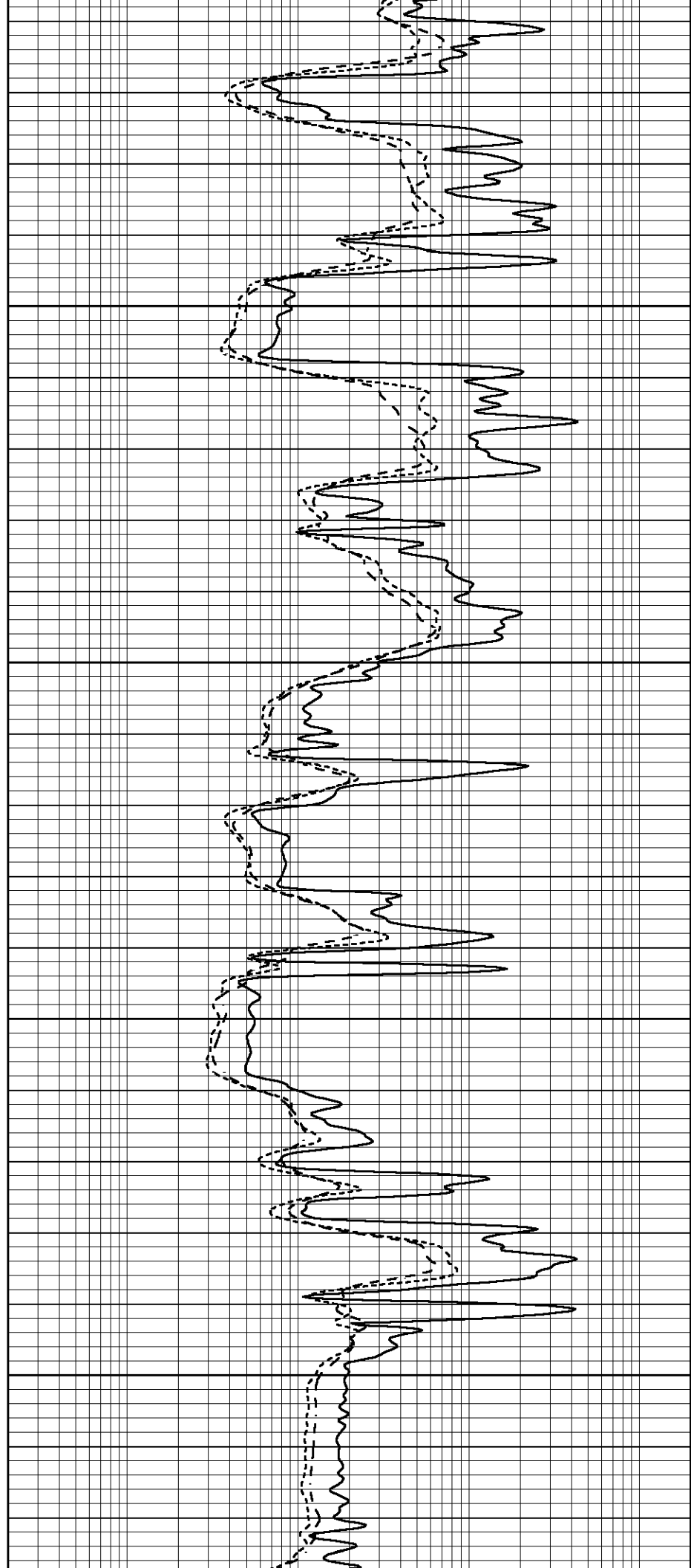


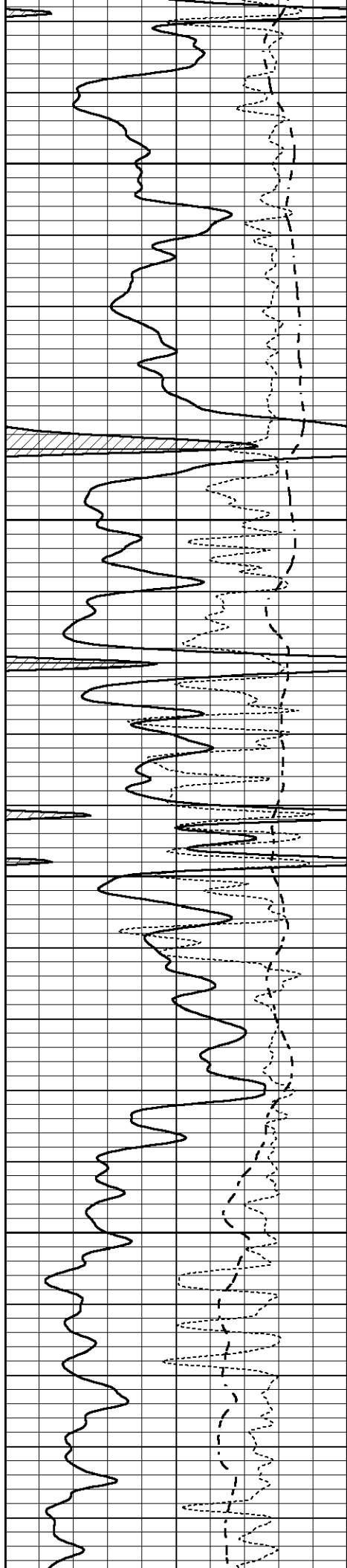
4100

4150

4200

4250



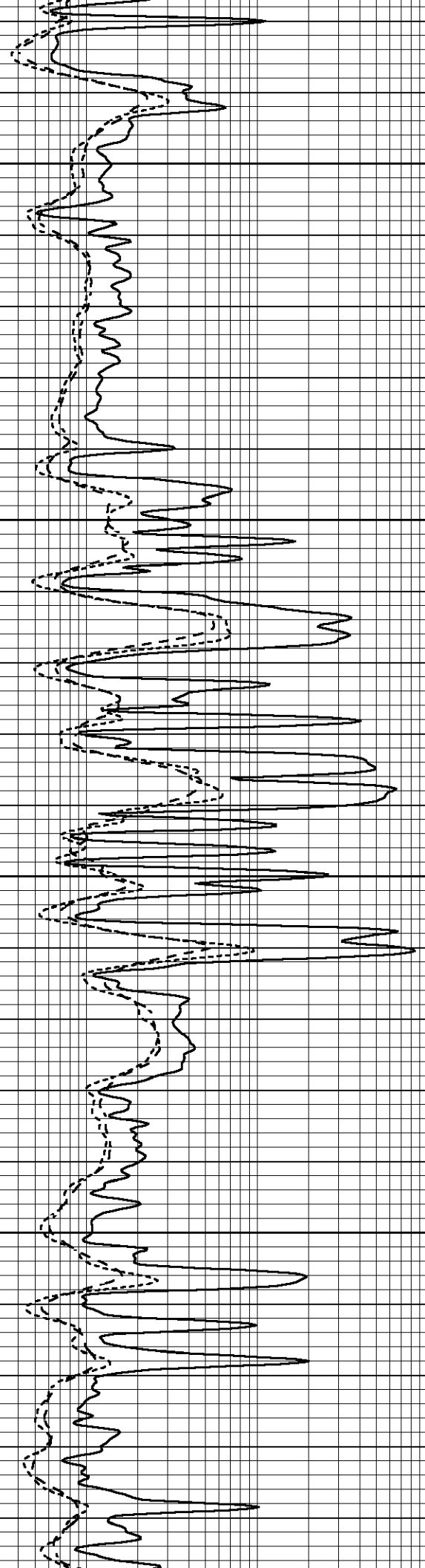


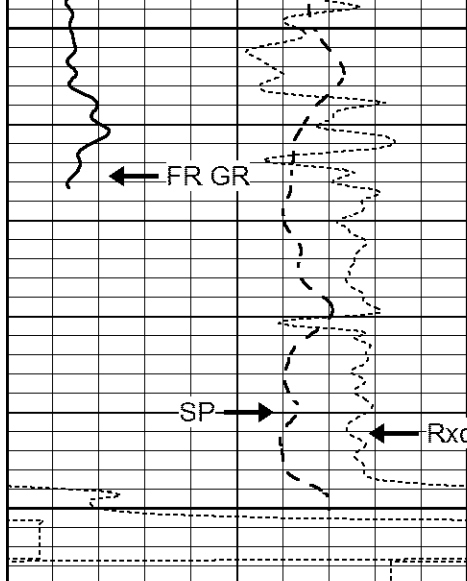
4300

4350

4400

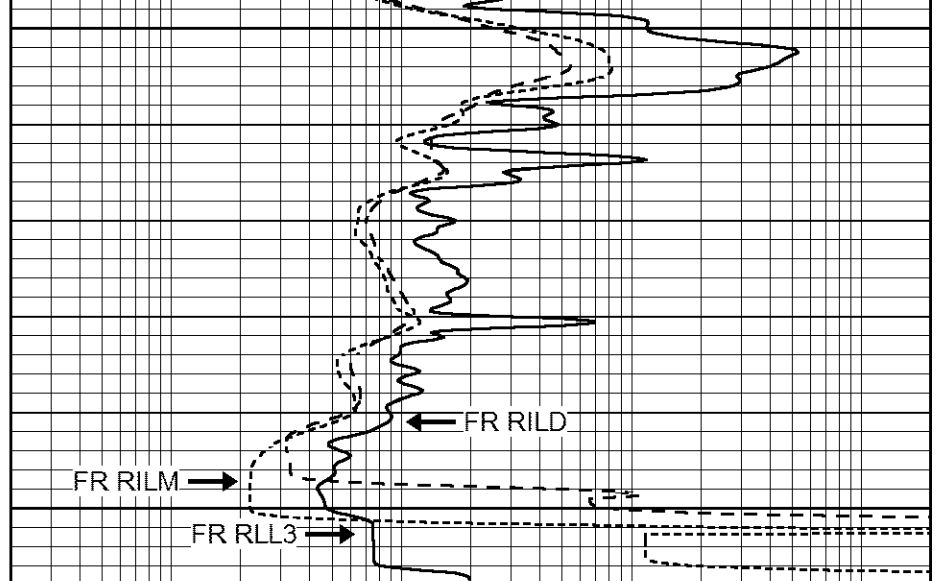
4450



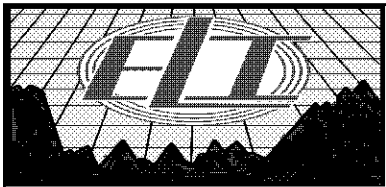


4500  
4550  
LTD 4554

0	GAMMA RAY (GAPI)	150
-100	SP (mV)	100
-250	Rxo/Rt	50



0.2	SHALLOW GUARD (Ohm-m)	2000
0.2	MEDIUM INDUCTION (Ohm-m)	2000
0.2	DEEP INDUCTION (Ohm-m)	2000

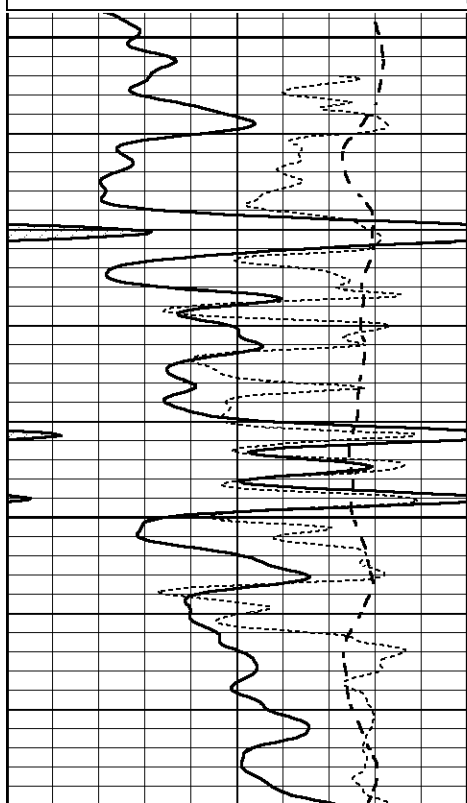


# REPEAT SECTION

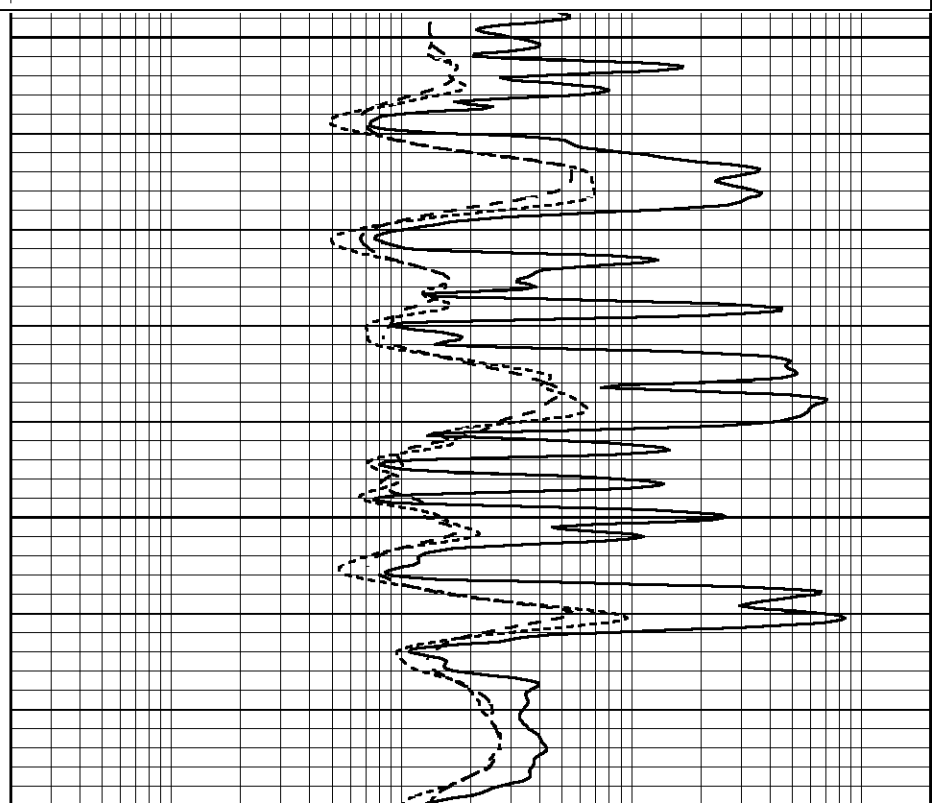
Database File 6234ddn.db  
 Dataset Pathname pass2.2  
 Presentation Format \_dil  
 Dataset Creation Wed Feb 02 05:06:37 2022  
 Charted by Depth in Feet scaled 1:240

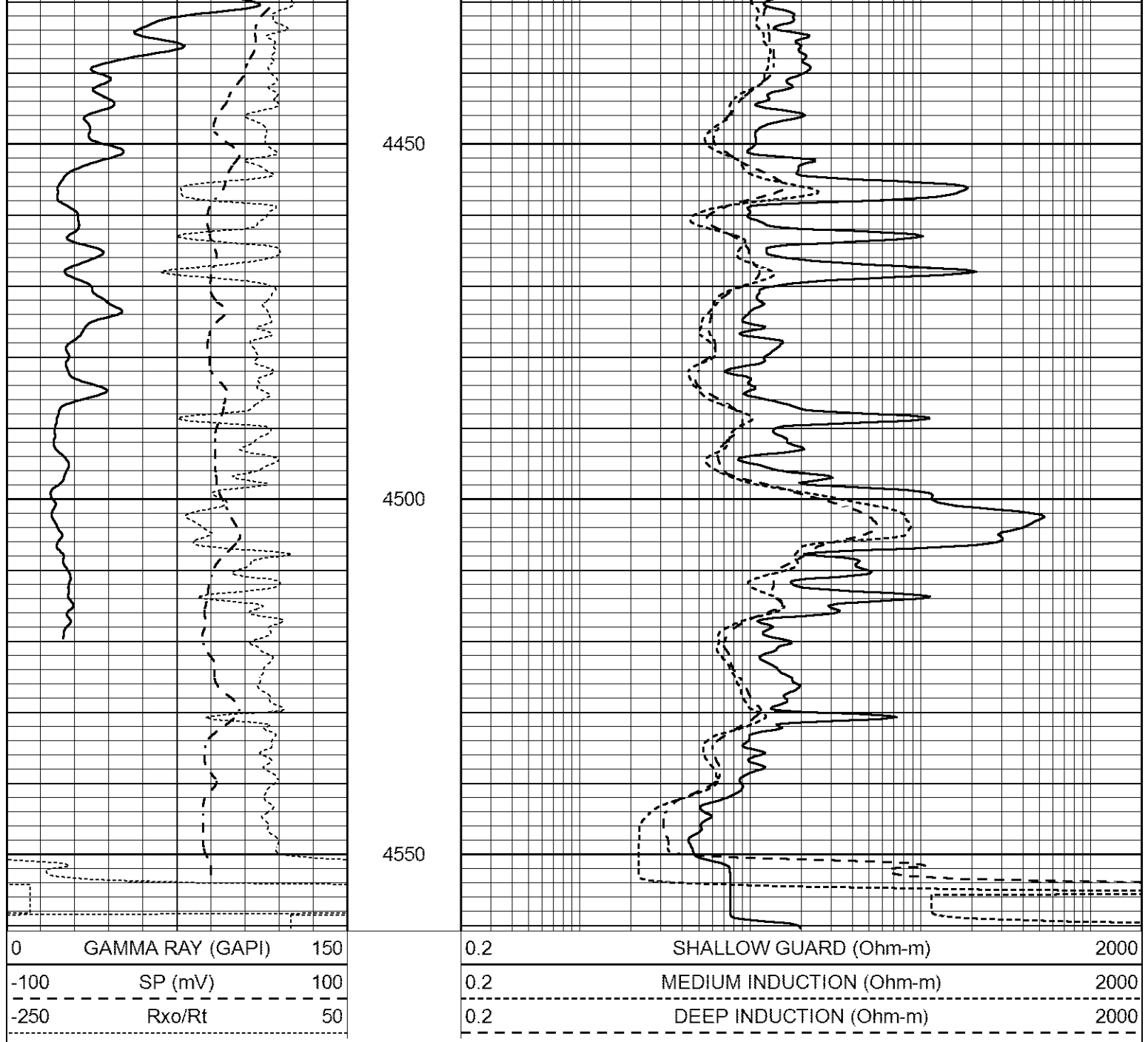
0	GAMMA RAY (GAPI)	150
-100	SP (mV)	100
-250	Rxo/Rt	50

0.2	SHALLOW GUARD (Ohm-m)	2000
0.2	MEDIUM INDUCTION (Ohm-m)	2000
0.2	DEEP INDUCTION (Ohm-m)	2000



4350  
4400





Calibration Report

Database File 6234ddn.db  
 Dataset Pathname pass2.2  
 Dataset Creation Wed Feb 02 05:06:37 2022

Dual Induction Calibration Report

Serial-Model: FW1410-55-Probe  
 Surface Cal Performed: Sat Jan 29 11:57:42 2022  
 Downhole Cal Performed: Tue Feb 19 11:44:24 2019  
 After Survey Verification Performed: Tue Feb 19 11:44:27 2019

Surface Calibration

Loop:	Readings			References			Results	
	Air	Loop	V	Air	Loop	mmho/m	m	b
Deep	0.011	0.656	V	1.000	400.000	mmho/m	618.595	-5.524
Medium	-0.000	0.731	V	1.000	464.000	mmho/m	632.856	1.197
Internal:	Zero	Cal		Zero	Cal		m	b

Interval	Zero	Cal		Zero	Cal		m'	b'
Deep	0.007	0.649	V	0.000	400.000	mmho/m	623.784	-4.595
Medium	0.004	0.743	V	0.000	464.000	mmho/m	627.284	-2.251

Downhole Calibration								
	Readings			References			Results	
	Zero	Cal		Zero	Cal		m'	b'
Deep	-0.824	395.917	mmho/m	-0.976	397.550	mmho/m	1.004	-0.149
Medium	3.565	471.327	mmho/m	3.468	471.590	mmho/m	1.001	-0.099
LL3		7.503	V		1500.000	Ohm-m		
		0.001	V		20.000	Ohm-m		
		-7.481	V		3745.000	mmho-m		

After Survey Verification								
	Readings			Targets			Results	
	Zero	Cal		Zero	Cal		m'	b'
Deep	0.000	0.000	mmho/m	-0.824	395.917	mmho/m	1.000	0.000
Medium	0.000	0.000	mmho/m	3.565	471.327	mmho/m	1.000	0.000
LL3		0.000	Ohm-m		1500.000	Ohm-m		
		0.000	Ohm-m		20.000	Ohm-m		
		0.000	mmho-m		3745.000	mmho-m		

Litho Density Calibration Report  
Serial: 140703  
Model: V4\_10P  
Source Number: 74GBq-19

Master Calibration				Performed: Tue Jan 25 14:00:06 2022				
	Background	Aluminum		Magnesium				
Window 1	536.63	5366.27		23525.73	cps			
Window 2	42.91	1241.07		5903.94	cps			
Window 4	234.22	1197.63		5056.39	cps			
Window 5	470.91	9159.65		17426.67	cps			
Window 6	30.83	648.89		1219.18	cps			
Window 8	256.26	4659.94		9003.51	cps			
Bulk Density	-	2.6020		1.6830	g/cc			
Pe	-	3.0000		2.5070	b/e			
LS Alpha:	:-1.8361		SS Alpha:	:-0.7848		LS CPE:	: 1.0879	
LS Beta:	: 117533.3616		SS Beta:	: 35294.5337		SS CPE:	: 5.9752	

Before Survey Background Counts Verification			Performed: Wed Dec 31 18:00:00 1969		
Window 1	0.00	cps			
Window 2	0.00	cps			
Window 4	0.00	cps			
Window 5	0.00	cps			
Window 6	0.00	cps			
Window 8	0.00	cps			

After Survey Background Counts Verification			Performed: Wed Dec 31 18:00:00 1969		
Window 1	0.00	cps			
Window 2	0.00	cps			
Window 4	0.00	cps			
Window 5	0.00	cps			

Window 6 0.00 cps  
 Window 8 0.00 cps

Lithodensity Caliper Calibration Performed: Tue Jan 25 14:00:06 2022

Results		Readings		References (in)		Gain	Offset
Low	High	Low	High				
10332.0	13596.9	8.0	14.0			0.0	-11.0

Before Survey Caliper Verification Performed:

Reference	Reading
_____	_____
Caliper (in)	

After Survey Caliper Verification Performed:

Reference	Reading
_____	_____
Caliper (in)	

Compensated Neutron Calibration Report

Serial Number: 080621PMC  
 Tool Model: NABORS

PRE-SURVEY VERIFICATION

Detector	Readings	Measured	Target
Short Space	cps		
Long Space	cps	pu	pu

POST-SURVEY VERIFICATION

Detector	Readings	Measured	Target
Short Space	cps		
Long Space	cps	pu	pu

Gamma Ray Calibration Report

Serial Number: 7  
 Tool Model: Probe1  
 Performed: Tue Jan 19 17:50:08 2021

Calibrator Value: 1.0 GAPI

Background Reading: 0.0 cps  
 Calibrator Reading: 1.0 cps

Sensitivity: 0.5300 GAPI/cps