



MICRO LOG

Company PALOMINO PETROLEUM, INC.
 Well FAY #3
 Field BROUGHTON NORTHWEST
 County LANE
 State KANSAS

Company PALOMINO PETROLEUM, INC.
 Well FAY #3
 Field BROUGHTON NORTHWEST
 County LANE State KANSAS

Location: API #: 15-101-22664-0000
 836' FNL & 2566' FEL
 SEC 10 TWP 16S RGE 27W
 Permanent Datum GROUND LEVEL Elevation 2585
 Log Measured From KELLY BUSHING 11' A.G.L.
 Drilling Measured From KELLY BUSHING
 Other Services CDL/CNL DIL
 Elevation K.B. 2596
 D.F. 2594
 G.L. 2585

Date	2/2/22		
Run Number	TWO		
Depth Driller	4555		
Depth Logger	4554		
Bottom Logged Interval	4552		
Top Log Interval	3600		
Casing Driller	8 5/8" @ 221		
Casing Logger	221		
Bit Size	7 7/8		
Type Fluid in Hole	CHEMICAL MUD	CHLORIDES 3500 PPM	
Density / Viscosity	9.4/55		
PH / Fluid Loss	10.5/8.8		
Source of Sample	FLOWLINE		
Rm @ Meas. Temp	1.4@60F		
Rmt @ Meas. Temp	1.05@60F		
Rmc @ Meas. Temp	1.88@60F		
Source of Rmf / Rmc	MEASUREMENT		
Rm @ BHT	.69@121		
Time Circulation Stopped	2 HOURS		
Time Logger on Bottom	////		
Maximum Recorded Temperature	121F		
Equipment Number	3802		
Location	HAYS, KANSAS		
Recorded By	JASON CAPPELLUCCI	TJ DREILING	
Witnessed By	RYAN SEIB		

<<< Fold Here >>>

All interpretations are opinions based on inferences from electrical or other measurements and we cannot and do not guarantee the accuracy or correctness of any interpretation, and we shall not, except in the case of gross or willful negligence on our part, be liable or responsible for any loss, costs, damages, or expenses incurred or sustained by anyone resulting from any interpretation made by any of our officers, agents or employees. These interpretations are also subject to our general terms and conditions set out in our current Price Schedule.

Comments

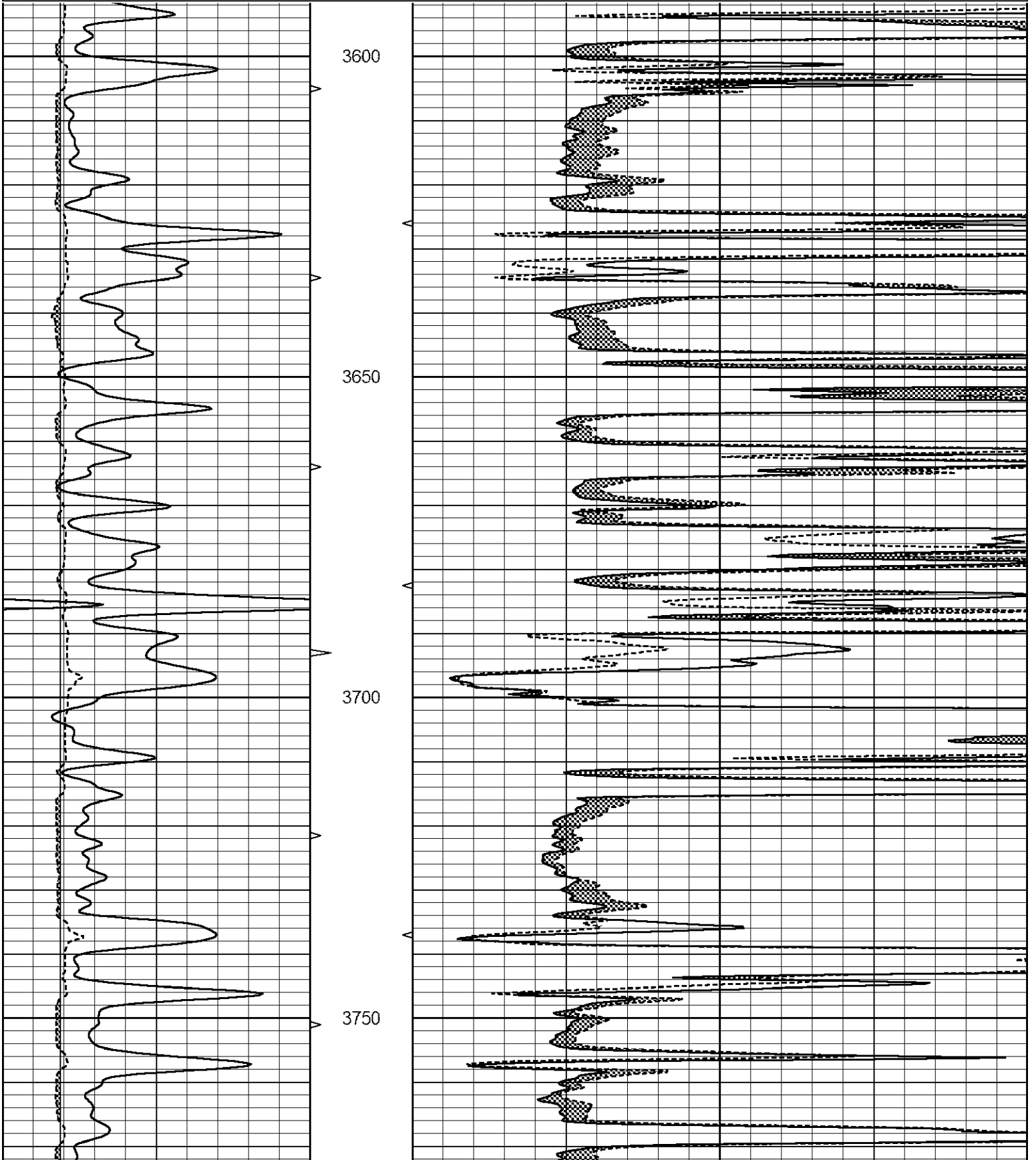
THANK YOU FOR USING ELI WIRELINE SERVICES, HAYS, KS. (785) 628-6395
 DIRECTIONS
 FROM UTTICA KS, -WEST TO RED CHIEF RD, -NORTH 2.6 MILES TO COUNTY RD 285, -EAST TO
 TOMAHAWK RD, -1/2 MILE EAST, -SOUTH INTO

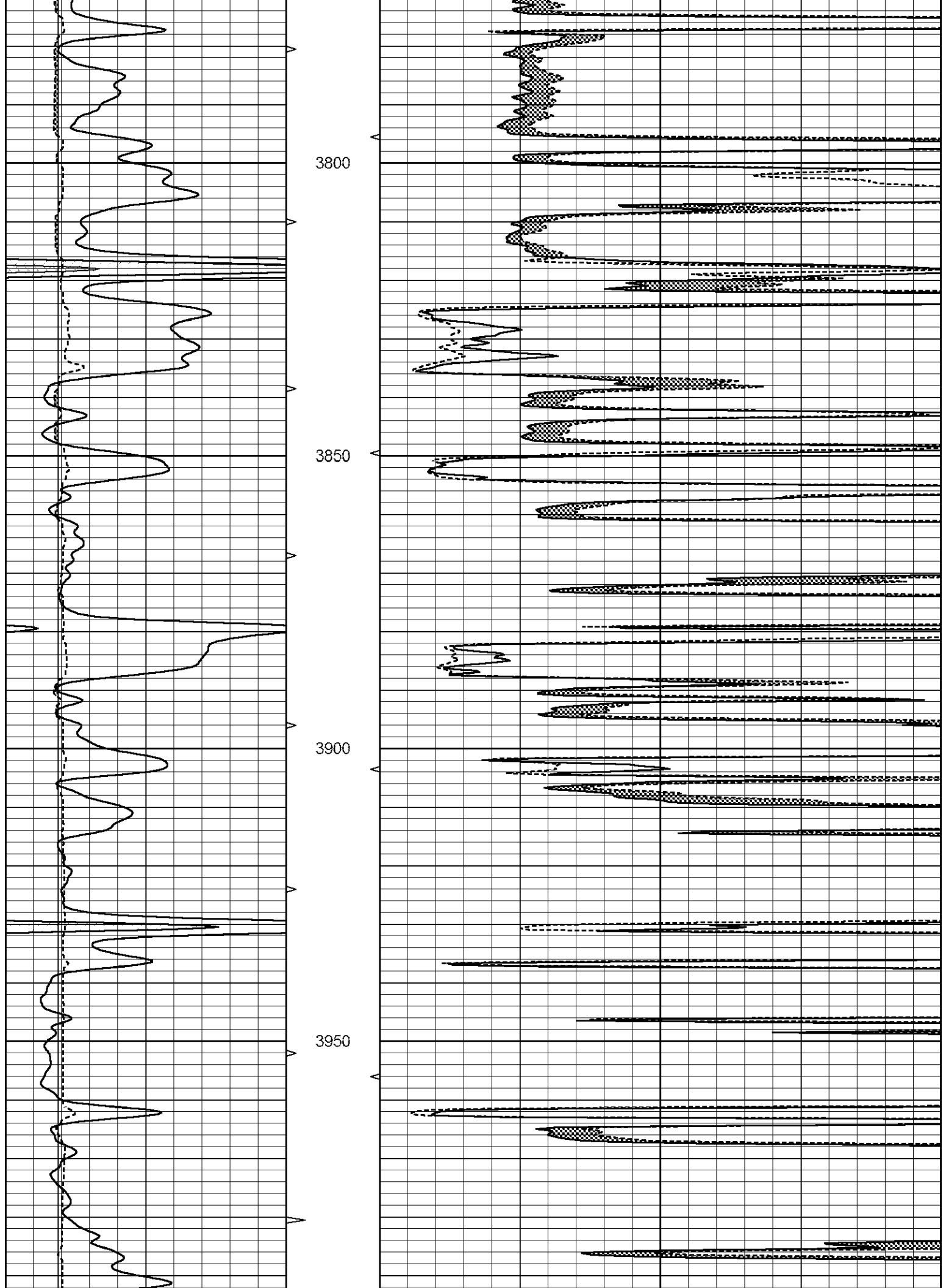


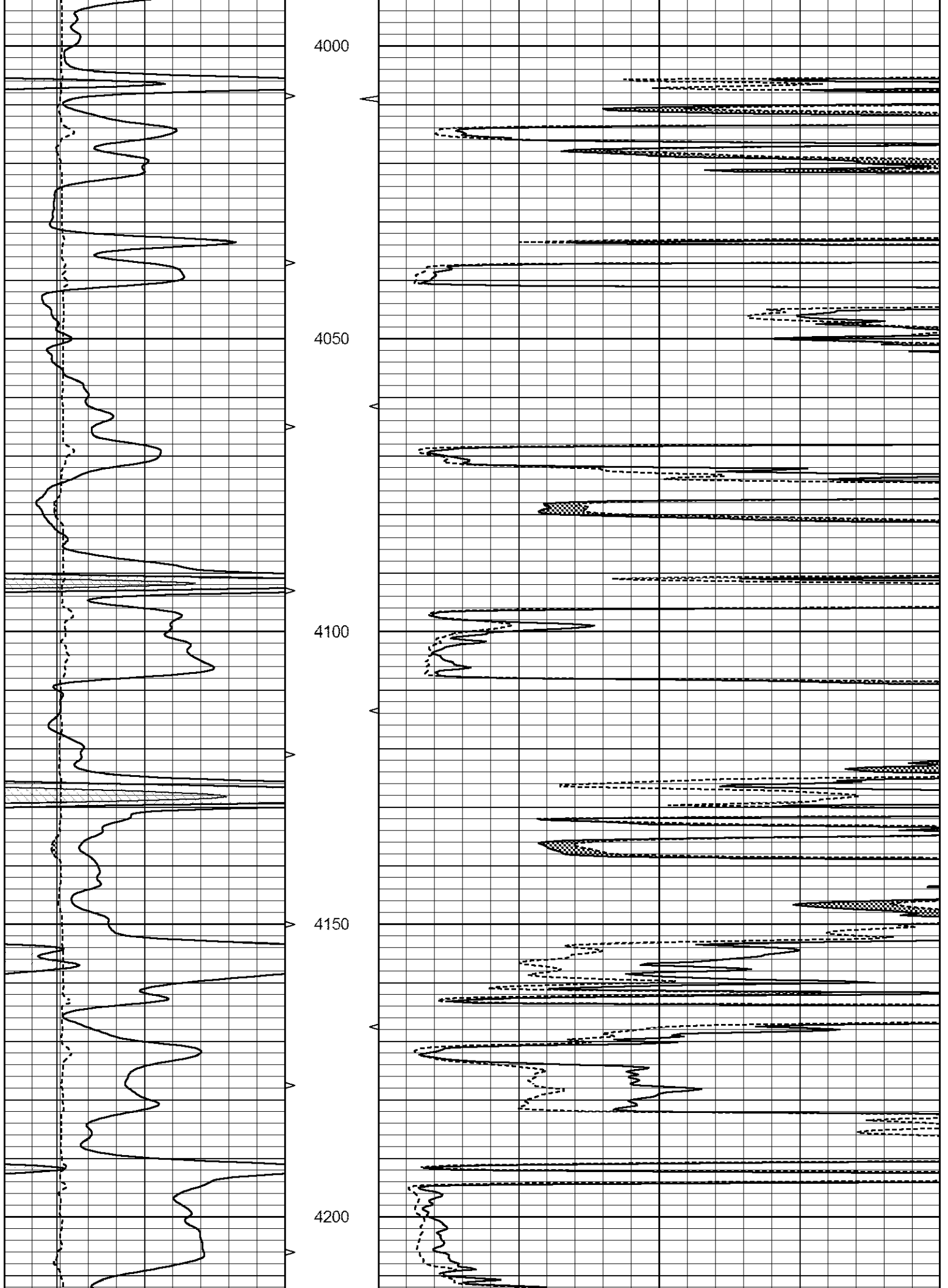
MAIN SECTION

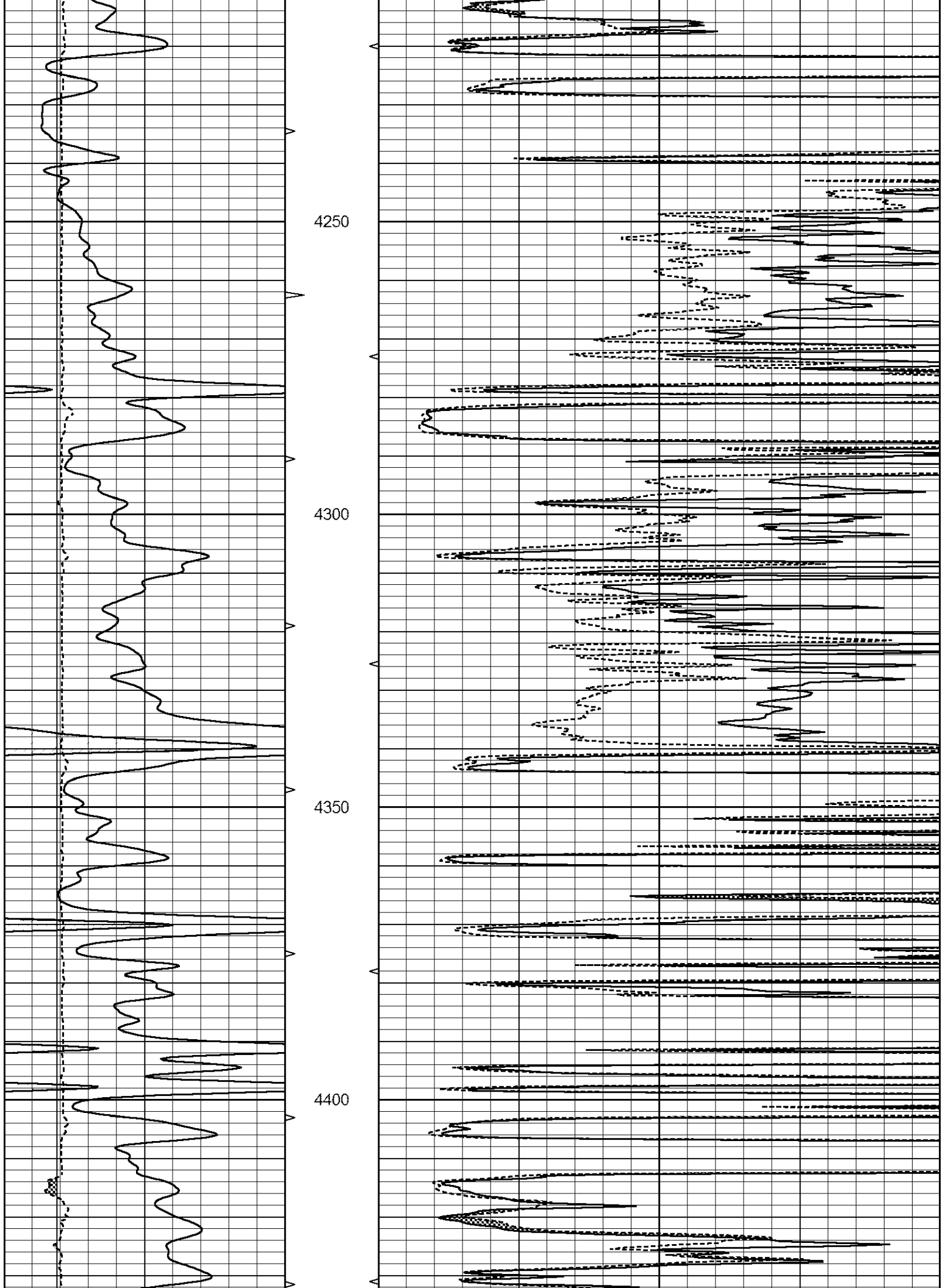
Database File 6234ddn.db
 Dataset Pathname pass6.1
 Presentation Format _micro
 Dataset Creation Wed Feb 02 07:21:21 2022
 Charted by Depth in Feet scaled 1:240

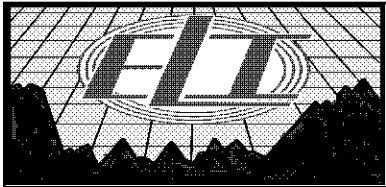
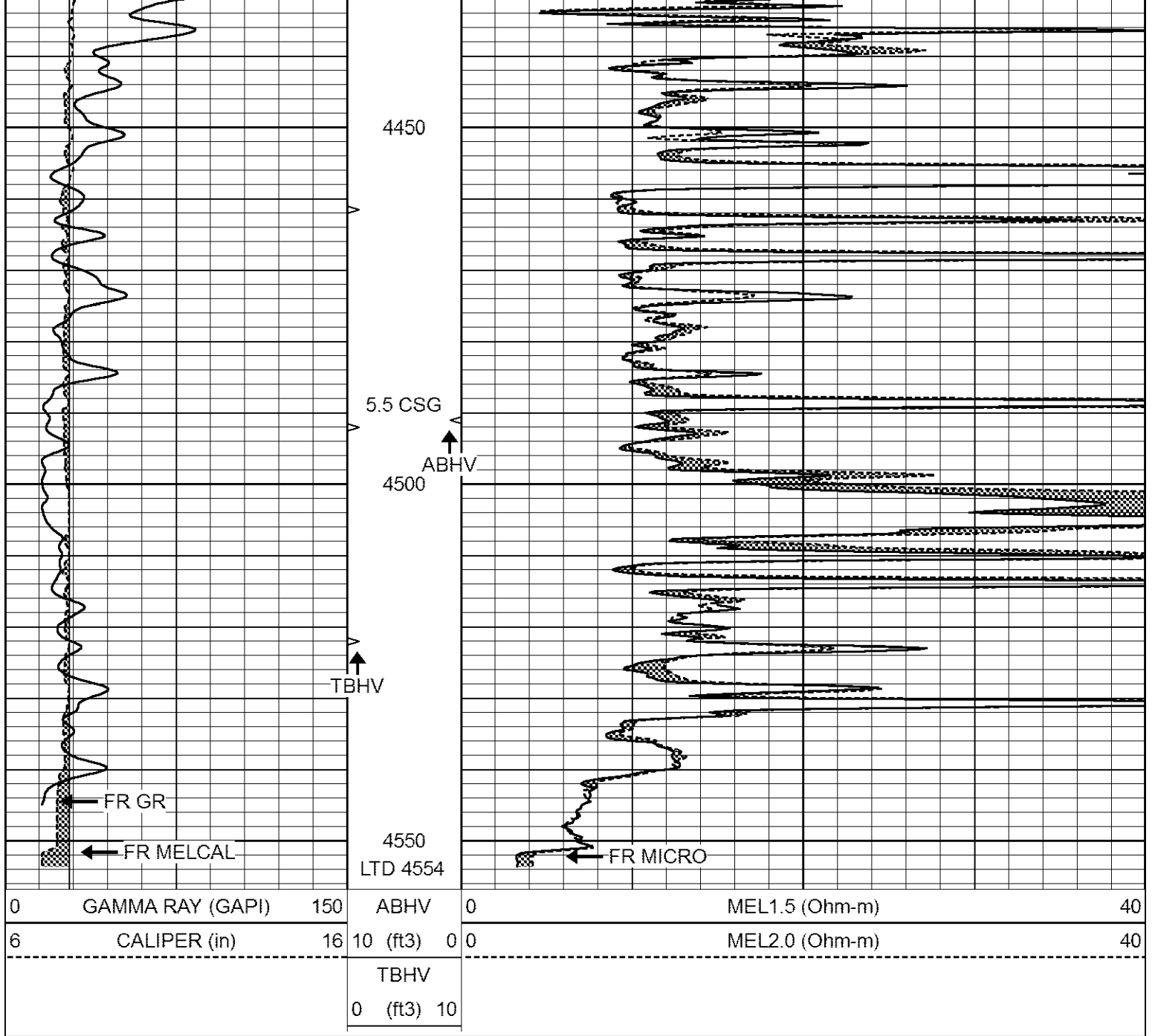
0	GAMMA RAY (GAPI)	150	ABHV	0	MEL1.5 (Ohm-m)	40
6	CALIPER (in)	16	10 (ft3)	0 0	MEL2.0 (Ohm-m)	40
			TBHV			
			0 (ft3)	10		







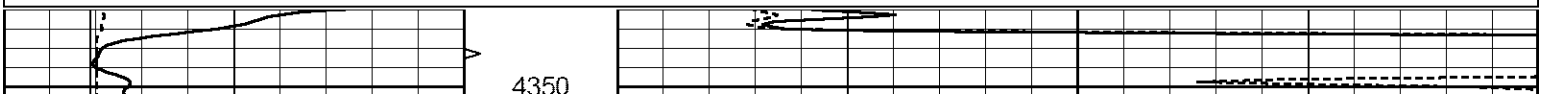


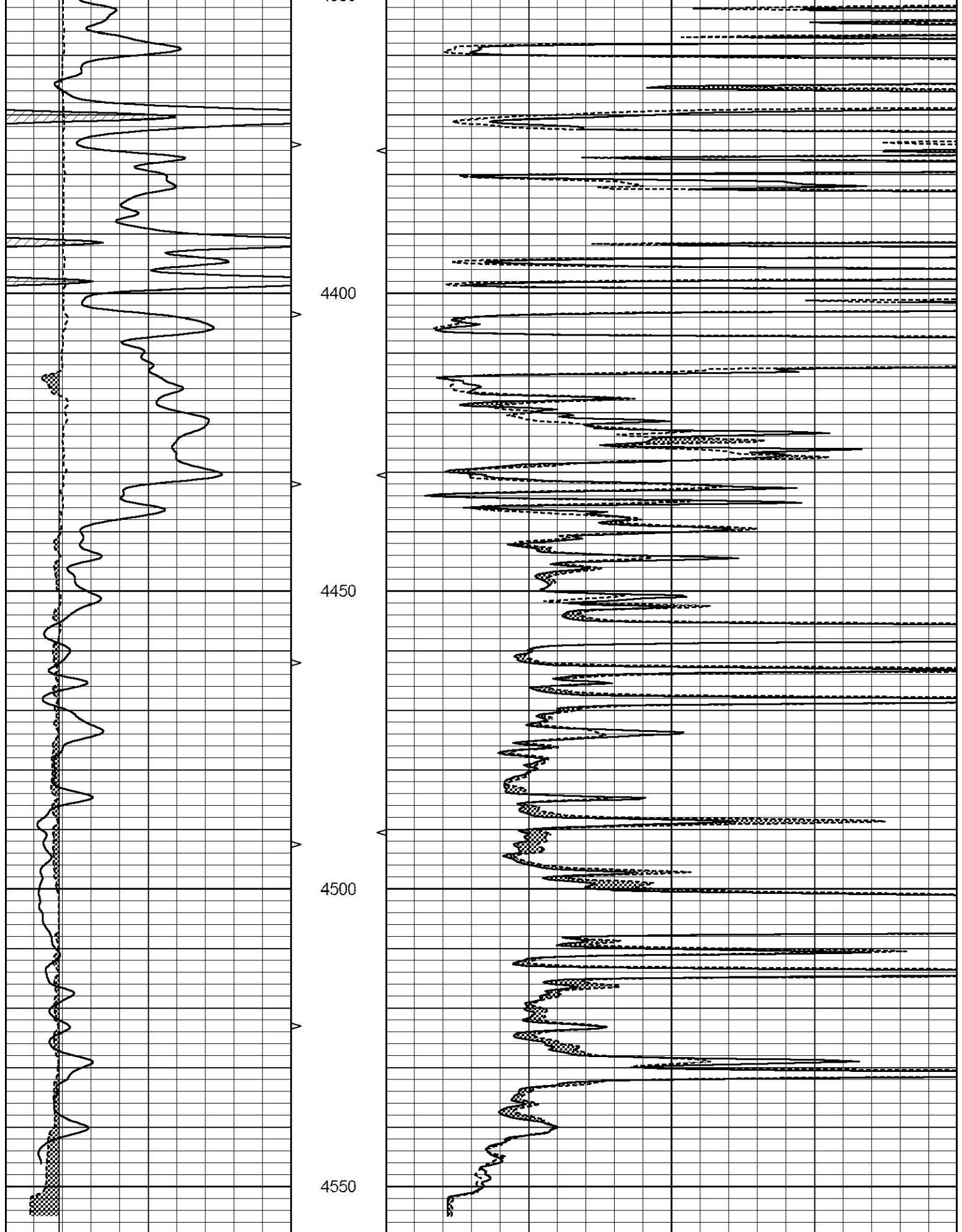


REPEAT SECTION

Database File 6234ddn.db
 Dataset Pathname pass5.1
 Presentation Format _micro
 Dataset Creation Wed Feb 02 07:16:15 2022
 Charted by Depth in Feet scaled 1:240

0	GAMMA RAY (GAPI)	150	ABHV	0	MEL1.5 (Ohm-m)	40
6	CALIPER (in)	16	10 (ft3) 0	0	MEL2.0 (Ohm-m)	40
			TBHV			
			0 (ft3) 10			





0	GAMMA RAY (GAPI)	150	ABHV	0	MEL1.5 (Ohm-m)	40
6	CALIPER (in)	16	10 (ft3)	0 0	MEL2.0 (Ohm-m)	40
			TRHV			

Calibration Report

Database File 6234ddn.db
 Dataset Pathname pass5.1
 Dataset Creation Wed Feb 02 07:16:15 2022

MICRO_USR Calibration Report

Serial Number: 070911
 Tool Model: ProbeL
 Performed: Tue Dec 21 16:59:08 2021

Caliper Calibration: Gain=3.755 Offset=1.950
 References Low Cal High Cal
 8.000 14.000
 Readings 1.451 3.049

1.5" Calibration: Gain=55.000 Offset=-0.700
 References Low Cal High Cal
 0.000 20.000
 Readings 0.004 0.843

2" Calibration: Gain=50.000 Offset=-0.650
 References Low Cal High Cal
 0.000 20.000
 Readings 0.021 0.810

Microlog Calibration Report

Serial-Model: 070911-ProbeL
 Performed: Sat Apr 11 01:13:01 2015

	Readings			References			Results	
	Zero	Cal		Zero	Cal		m	b
Normal	0.0002	0.4836	V	0.0000	10.0000	Ohm-m	20.6908	-0.0051
Inverse	0.0018	0.6297	V	0.0000	10.0000	Ohm-m	15.9263	-0.0282
Caliper	0.0000	1.0000	V	0.0000	1.0000	in	1.0000	0.0000

Gamma Ray Calibration Report

Serial Number: 070558
 Tool Model: Probe1
 Performed: Fri Oct 30 21:32:56 2020

Calibrator Value: 1.0 GAPI

Background Reading: 0.0 cps
 Calibrator Reading: 1.0 cps

Sensitivity: 0.2700 GAPI/cps