



**COMPENSATED
DENSITY / NEUTRON
LOG**

Company PALOMINO PETROLEUM, INC.
Well BILLY BOB #2
Field KRW
County GOVE **State** KANSAS

Location: API #: 15-063-22389-00-00
 1739' FNL & 1549' FWL
 SW - NW - SE - NW
Permanent Datum GROUND LEVEL **Elevation** 2359
Log Measured From KELLY BUSHING 7' A.G.L.
Drilling Measured From KELLY BUSHING
Other Services DILMEL
Elevation K.B. 2366
 D.F. 2364
 G.L. 2359

Company	PALOMINO PETROLEUM, INC.
Well	BILLY BOB #2
Field	KRW
County	GOVE
State	KANSAS
Date	1/3/22
Run Number	ONE
Depth Driller	4385
Depth Logger	4384
Bottom Logged Interval	4360
Top Log Interval	3500
Casing Driller	8 5/8" @ 210'
Casing Logger	210
Bit Size	7 7/8"
Type Fluid in Hole	CHEMICAL MUD
Density / Viscosity	9.0/58
pH / Fluid Loss	11.0/7.2
Source of Sample	FLOWLINE
Rm @ Meas. Temp	1.30 @ 60F
Rmf @ Meas. Temp	.975 @ 60F
Rmc @ Meas. Temp	1.56 @ 60F
Source of Rmf / Rmc	MEASUREMENT
Rm @ BHT	.656 @ 119F
Time Circulation Stopped	2.5 HOURS
Time Logger on Bottom	9:00 A.M.
Maximum Recorded Temperature	119F
Equipment Number	922339
Location	HAYS, KANSAS
Recorded By	JEFF LUEBBERS
Witnessed By	ELI J. FELTS

<<< Fold Here >>>

All interpretations are opinions based on inferences from electrical or other measurements and we cannot and do not guarantee the accuracy or correctness of any interpretation, and we shall not, except in the case of gross or willful negligence on our part, be liable or responsible for any loss, costs, damages, or expenses incurred or sustained by anyone resulting from any interpretation made by any of our officers, agents or employees. These interpretations are also subject to our general terms and conditions set out in our current Price Schedule.

15-063-22389-00-00 Comments

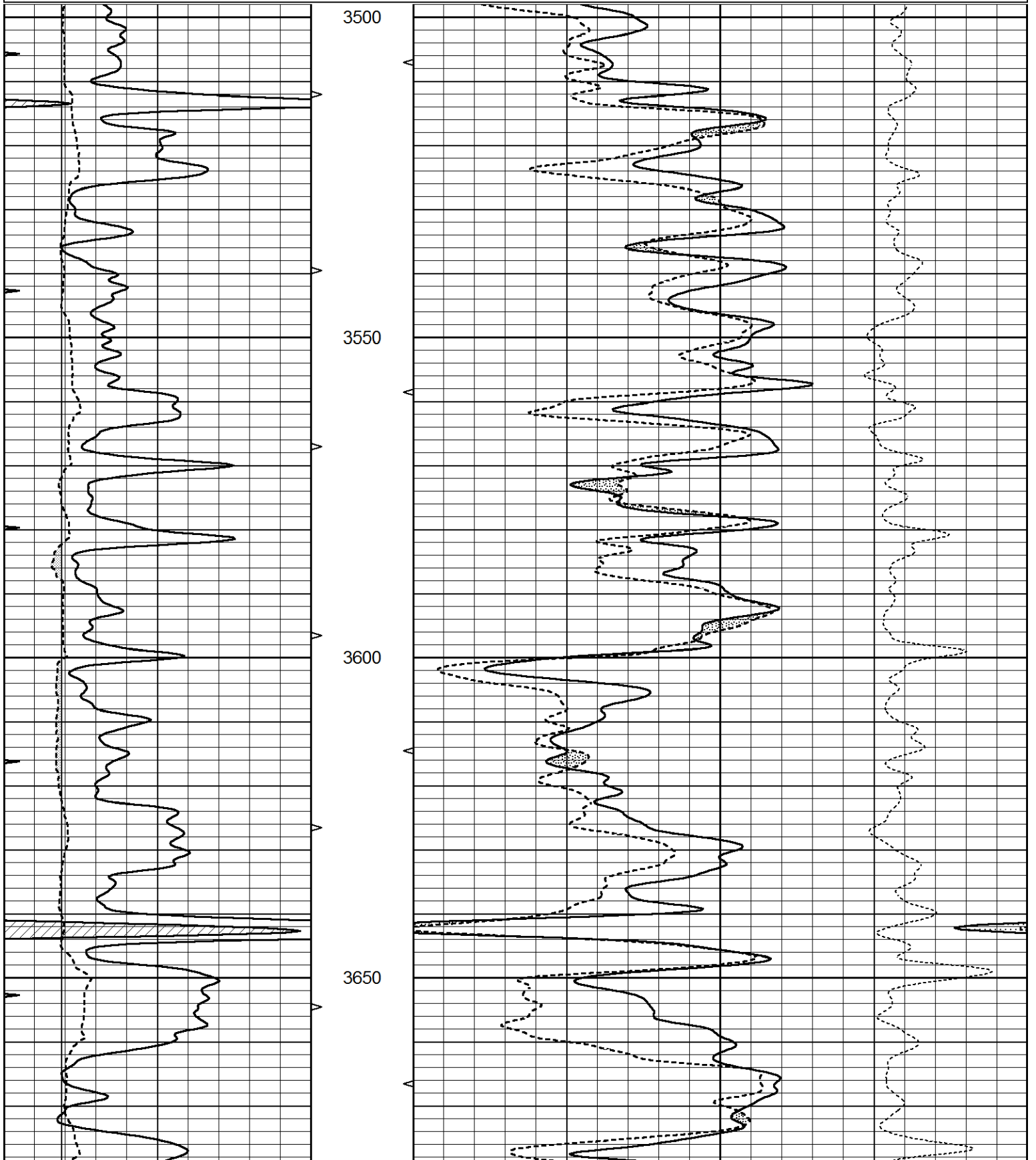
THANK YOU FOR USING ELI WIRELINE HAYS, KANSAS (785) 628-6395
 DIRECTIONS
 I-70 & COLLYER EXIT, 13S. ON "BANNER RD." TO "RD. U", 3W. TO "GOVE 80", 4S., CURVE E. & S.,
 GO BACK W. 1 MILE & S. INTO

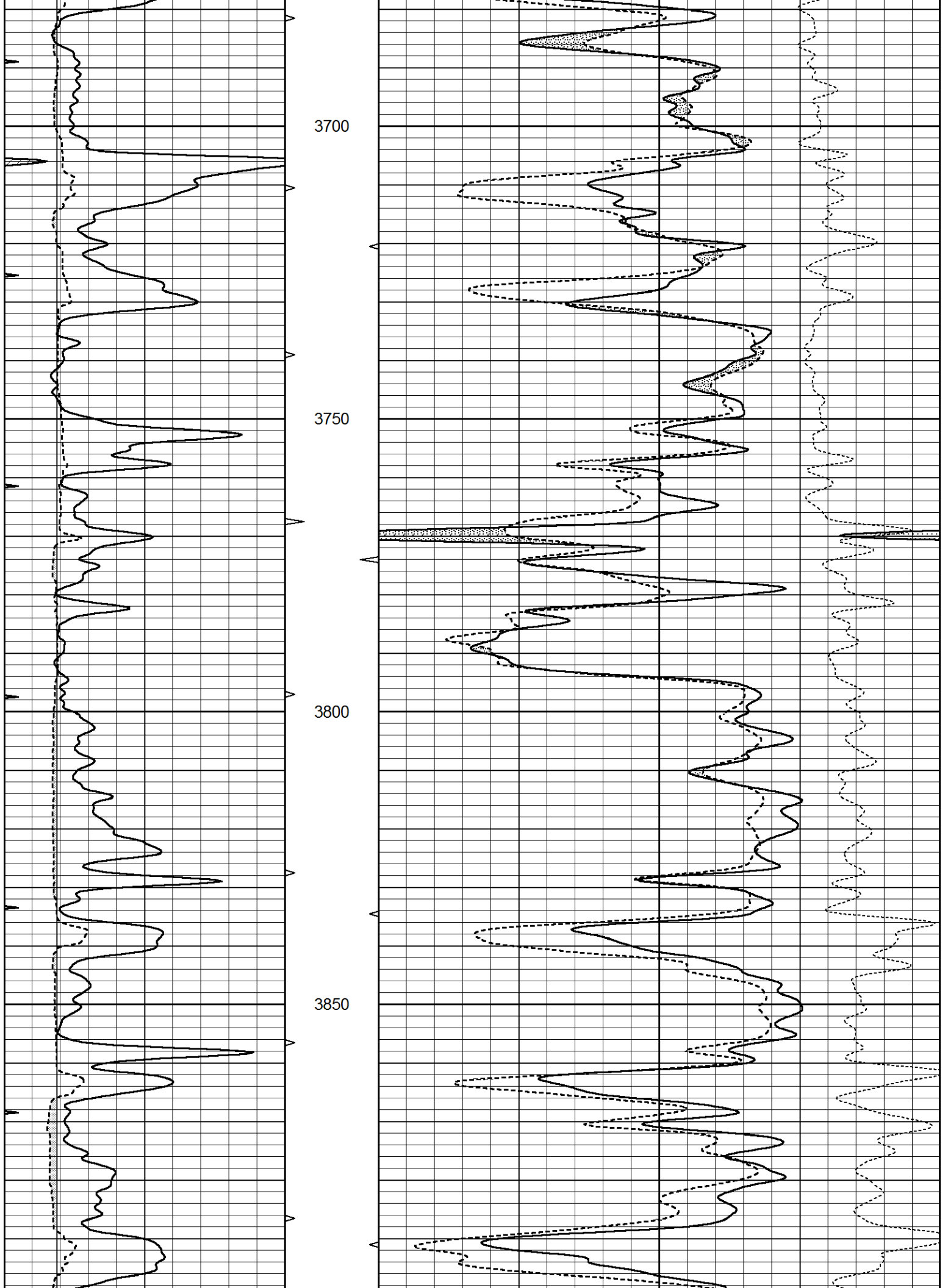


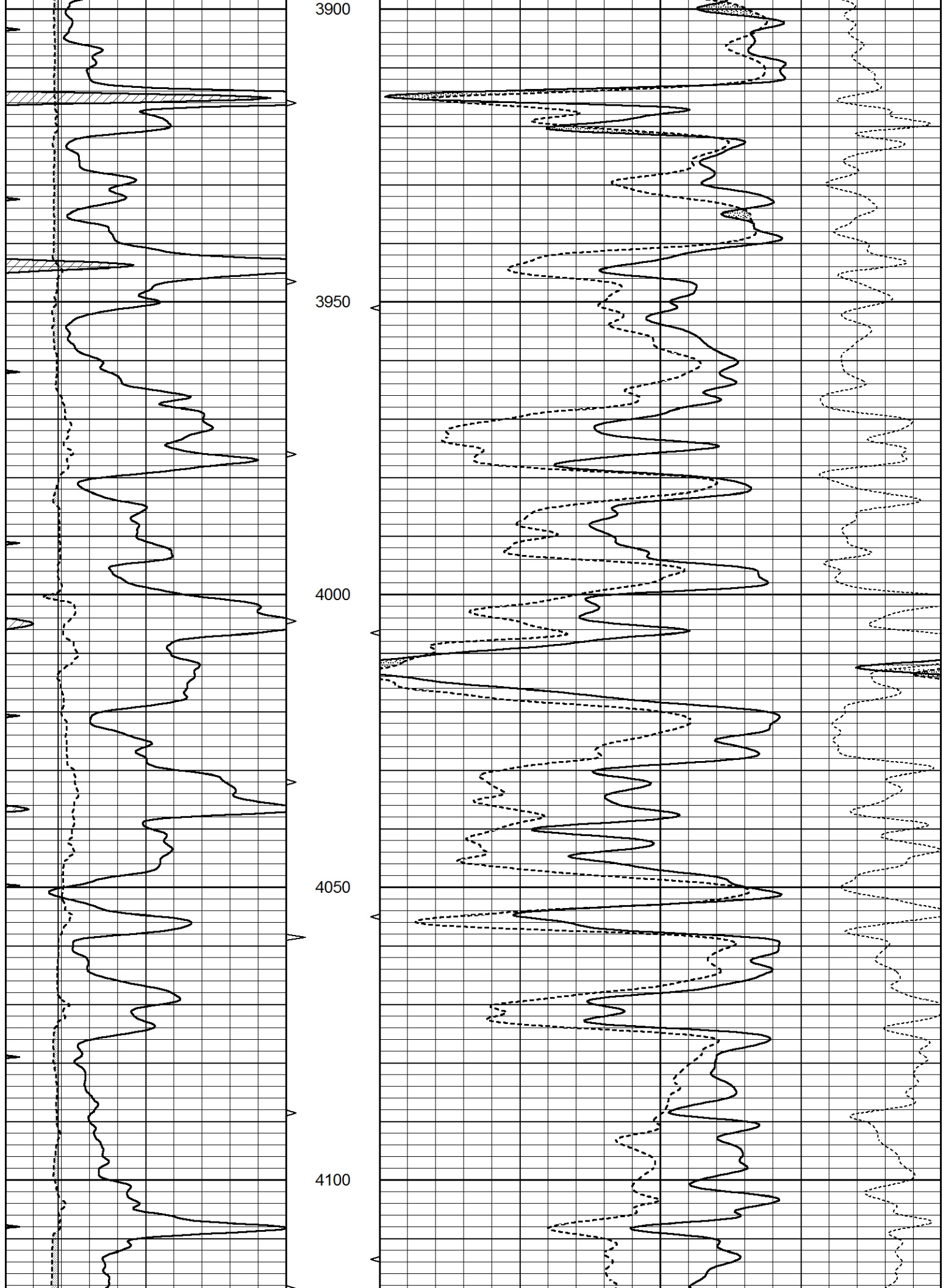
MAIN SECTION

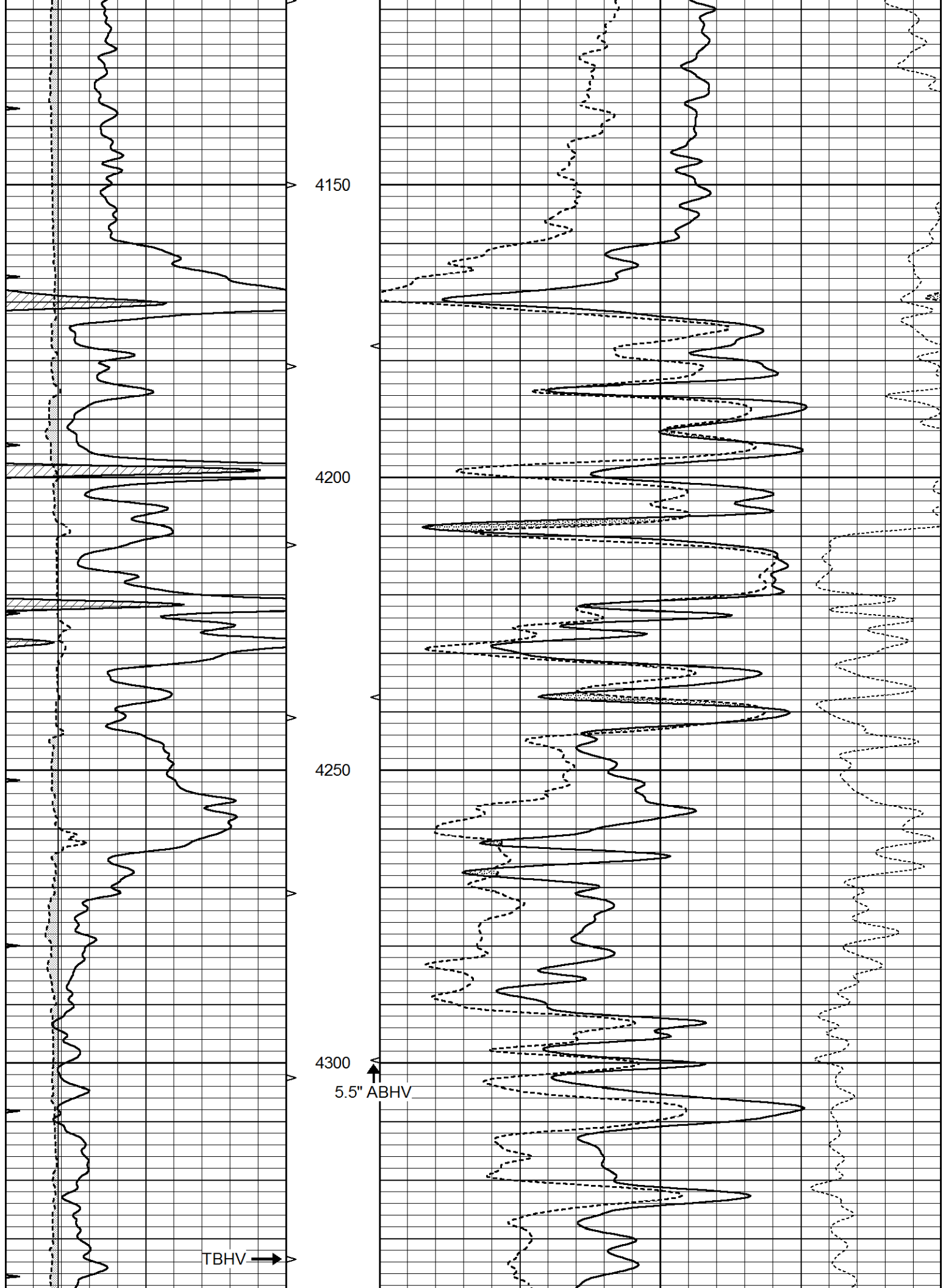
Database File 5931ddn.db
 Dataset Pathname pass3.4M
 Presentation Format den_neu
 Dataset Creation Mon Jan 03 11:21:10 2022
 Charted by Depth in Feet scaled 1:240

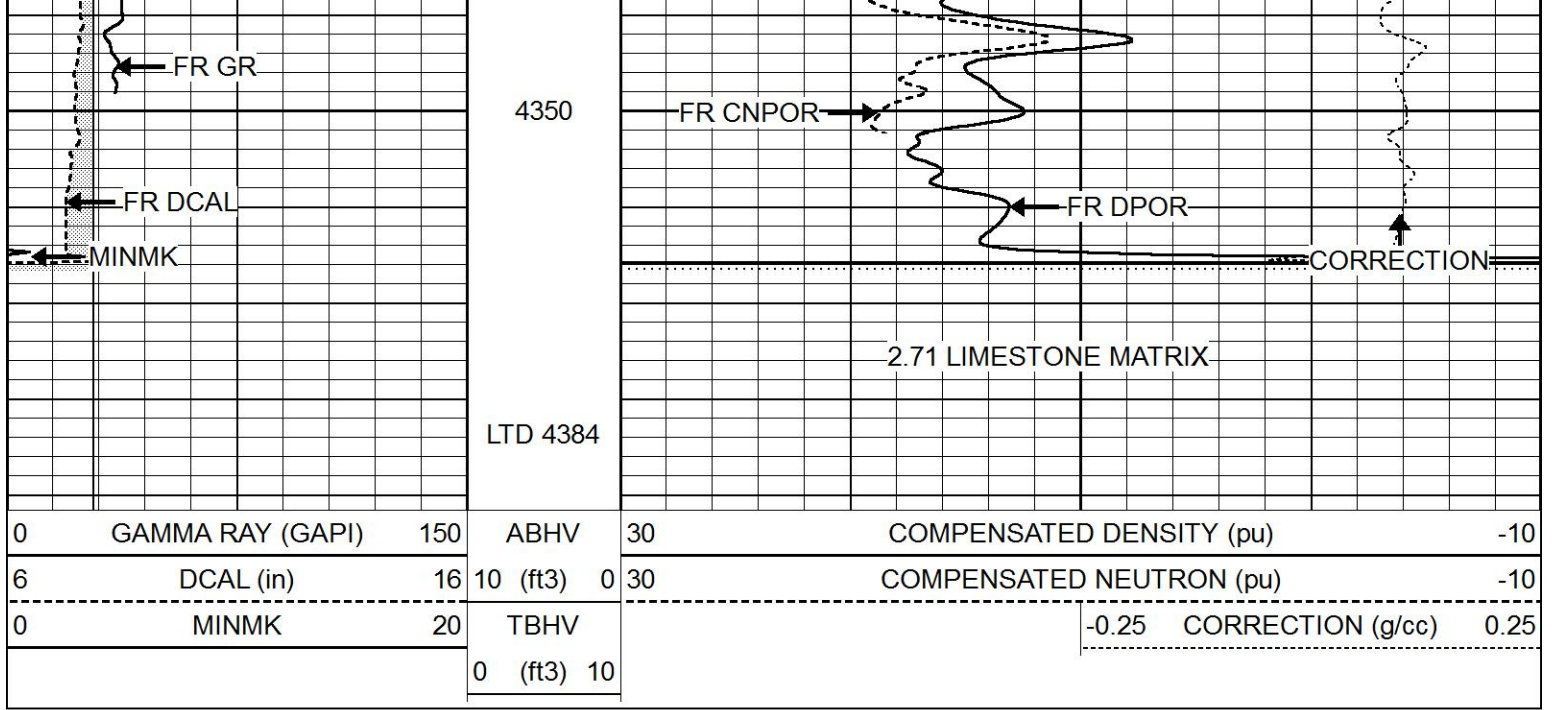
0	GAMMA RAY (GAPI)	150	ABHV	30	COMPENSATED DENSITY (pu)	-10		
6	DCAL (in)	16	10 (ft3)	0	30	COMPENSATED NEUTRON (pu)	-10	
0	MINMK	20	TBHV			-0.25	CORRECTION (g/cc)	0.25
			0 (ft3)	10				







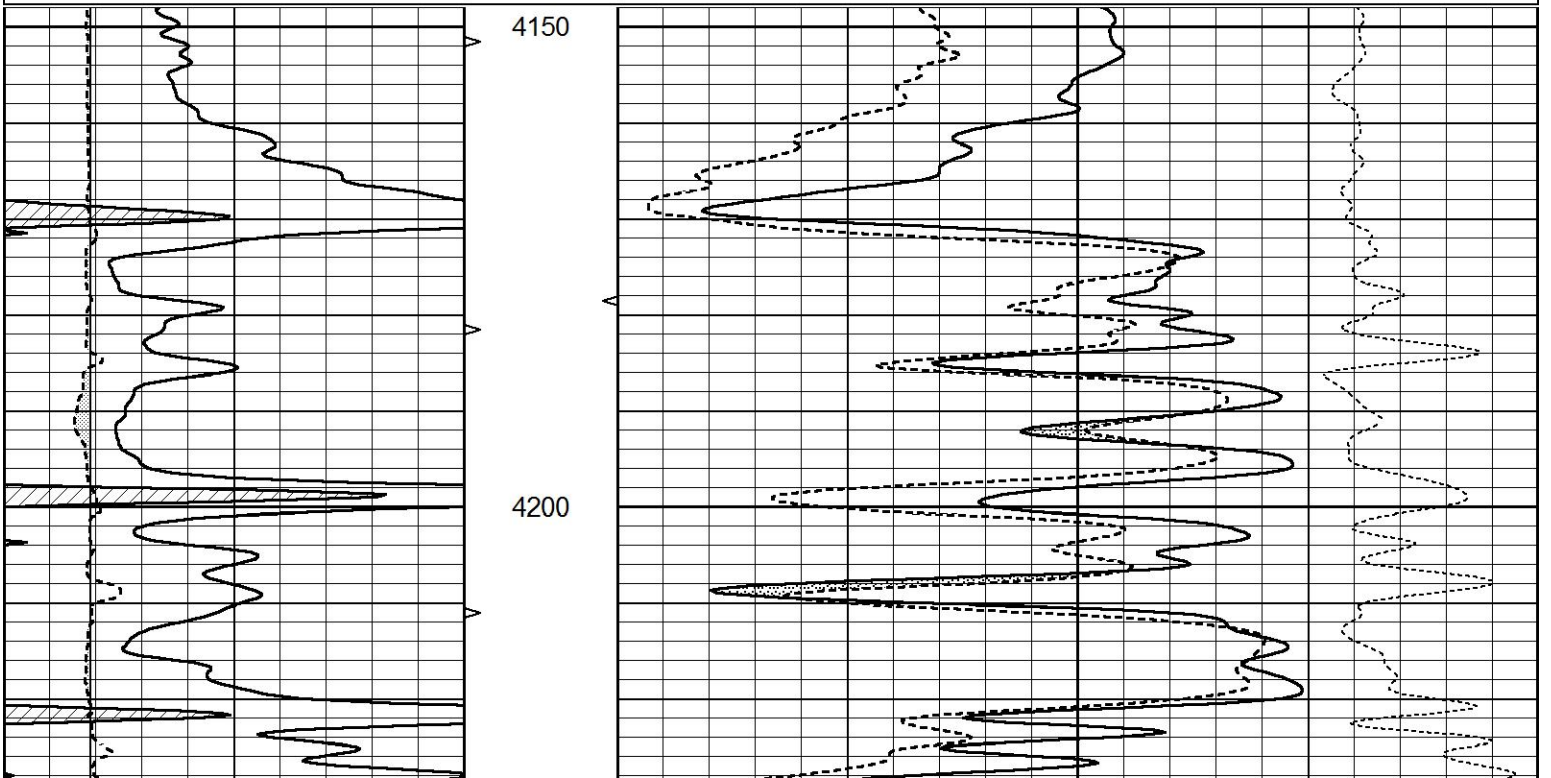


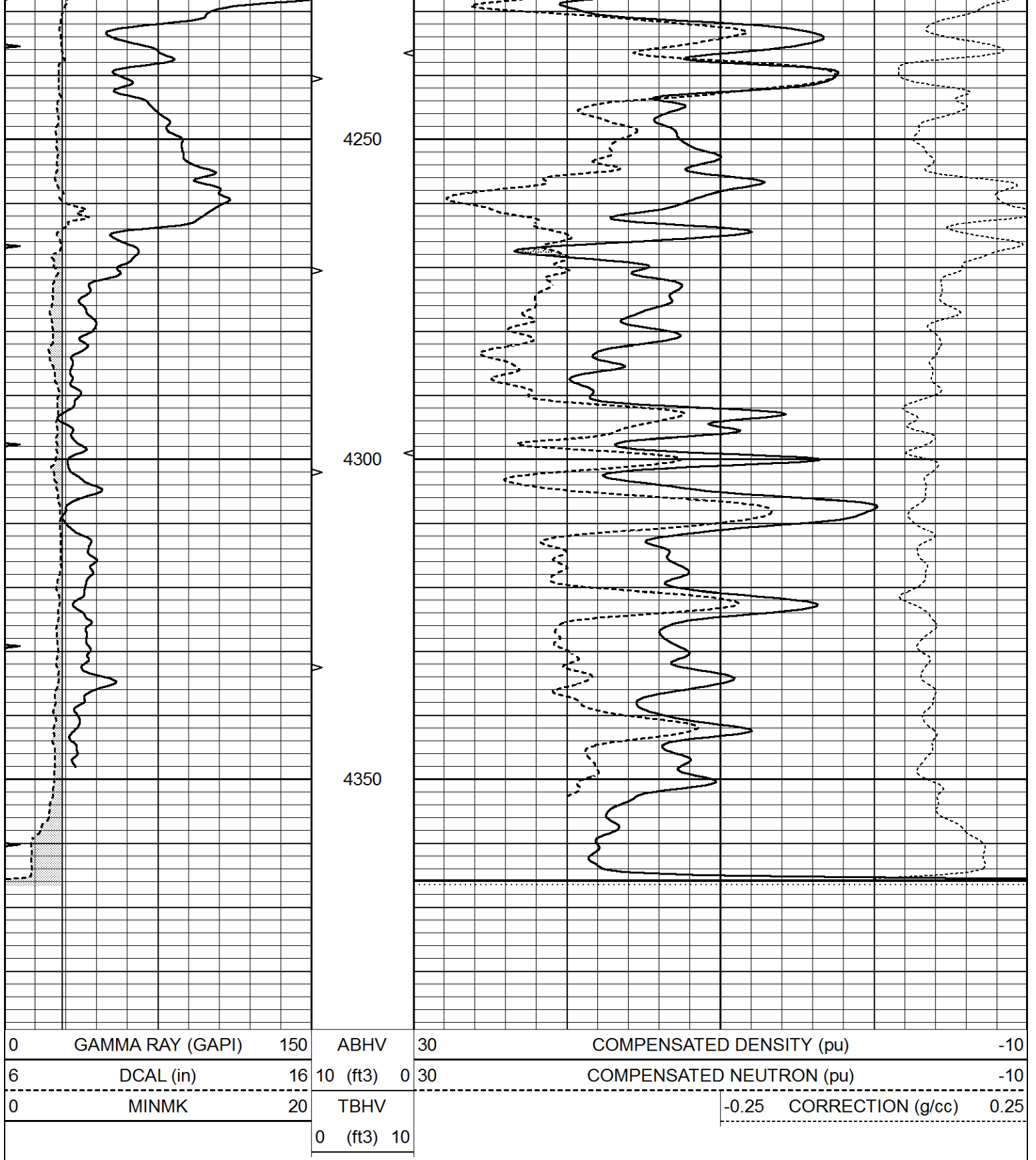


REPEAT SECTION

Database File 5931ddn.db
 Dataset Pathname pass2.1R
 Presentation Format den_neu
 Dataset Creation Mon Jan 03 11:23:20 2022
 Charted by Depth in Feet scaled 1:240

0	GAMMA RAY (GAPI)	150	ABHV	30	COMPENSATED DENSITY (pu)	-10
6	DCAL (in)	16	10 (ft3)	0 30	COMPENSATED NEUTRON (pu)	-10
0	MINMK	20	TBHV		-0.25 CORRECTION (g/cc)	0.25
			0 (ft3)	10		





Calibration Report

Database File 5931ddn.db
 Dataset Pathname pass3.4M
 Dataset Creation Mon Jan 03 11:21:10 2022

Dual Induction Calibration Report

Serial-Model: DIL4-GEAR
 Surface Cal Performed: Mon Jan 03 09:12:09 2022
 Downhole Cal Performed: Tue Sep 25 17:01:29 2001

Surface Calibration

Loop:	Readings			References			Results	
	Air	Loop		Air	Loop		m	b
Deep	0.008	0.666	V	0.000	400.000	mmho/m	580.000	-3.000
Medium	-0.003	0.769	V	0.000	462.500	mmho/m	560.000	-3.000
Internal:	Zero	Cal		Zero	Cal		m	b
Deep	0.013	0.651	V	0.000	400.000	mmho/m	627.541	-8.365
Medium	0.020	0.754	V	0.000	462.500	mmho/m	630.311	-12.549

Downhole Calibration

Internal:	Readings			References			Results	
	Zero	Cal		Zero	Cal		m	b
Deep	0.000	1.000	mmho/m	0.000	1.000	mmho/m	1.000	0.000
Medium	0.000	1.000	mmho/m	0.000	1.000	mmho/m	1.000	0.000
Shallow	2.525	0.026	V	500.000	2.000	Ohm-m	250.000	-3.000

After Survey Verification

Internal:	Readings			Targets			Results	
	Zero	Cal		Zero	Cal		m'	b'
Deep	0.000	1.000	mmho/m	0.000	1.000	mmho/m	1.000	0.000
Medium	0.000	1.000	mmho/m	0.000	1.000	mmho/m	1.000	0.000
Shallow	0.000	0.000	Ohm-m	500.000	2.000	Ohm-m	1.000	0.000

Litho Density Calibration Report

Serial: 003 Model: PRB

Master Calibration

Performed Fri Mar 05 10:51:07 2021

	Background	Magnesium	Aluminum	Aluminum+Fe	
Window 1	1570.6	10682.1	3457.0	3096.9	cps
Window 2	1451.7	9432.7	3101.4	2816.5	cps
Window 3	1334.0	7160.6	2532.0	2369.3	cps
Window 4	370.4	373.1	366.4	370.9	cps
Long Space	0.0	7981.0	1649.7	1364.8	cps
Short Space	2.8	3522.0	2211.0	1823.6	cps
Rho		1.7100	2.5900	0.0000	g/cc
Pe		2.0000	2.7500	5.7900	
Rib Angle	: 43.5	Rib Slope	: 0.951	Density/Spine Ratio	: 0.535
Spine Angle	: 73.5	Spine Slope	: 3.386	Spine Intercept	: -18.7

Before Survey Verification

Performed Wed Dec 31 18:00:00 1969

Window 1	0.0	0.0	0.0	0.0	cps
Window 2	0.0	0.0	0.0	0.0	cps
Window 3	0.0	0.0	0.0	0.0	cps
Window 4	0.0	0.0	0.0	0.0	cps
Long Space	0.0	0.0	0.0	0.0	cps
Short Space	0.0	0.0	0.0	0.0	cps
Measured Rho		0.0000	0.0000	0.0000	g/cc
Measured Correction		0.0000	0.0000	0.0000	g/cc
Measured Pe		0.0000	0.0000	0.0000	

Measured Pe

0.0000

0.0000

After Survey Verification

Performed Wed Dec 31 18:00:00 1969

Window 1	0.0	0.0	0.0	0.0	cps
Window 2	0.0	0.0	0.0	0.0	cps
Window 3	0.0	0.0	0.0	0.0	cps
Window 4	0.0	0.0	0.0	0.0	cps
Long Space	0.0	0.0	0.0	0.0	cps
Short Space	0.0	0.0	0.0	0.0	cps
Measured Rho		0.0000	0.0000	0.0000	g/cc
Measured Correction		0.0000	0.0000	0.0000	g/cc
Measured Pe			0.0000	0.0000	

Compensated Neutron Calibration Report

Serial Number: 070808PMC
 Tool Model: NABORS

PRE-SURVEY VERIFICATION

Detector	Readings	Measured	Target
Short Space	cps		
Long Space	cps	pu	pu

POST-SURVEY VERIFICATION

Detector	Readings	Measured	Target
Short Space	cps		
Long Space	cps	pu	pu

Gamma Ray Calibration Report

Serial Number: 070558
 Tool Model: OPEN_GR
 Performed: Sun Jan 02 21:54:21 2022

Calibrator Value: 1.0 GAPI

Background Reading: 0.0 cps
 Calibrator Reading: 1.0 cps

Sensitivity: 0.2500 GAPI/cps