

MICRO LOG



Company PALOMINO PETROLEUM, INC.
 Well BILLY BOB #2
 Field KRW
 County GOVE State KANSAS

Location: API #: 15-063-22389-00-00
 1739' FNL & 1549' FWL
 SW - NW - SE - NW
 Permanent Datum GROUND LEVEL Elevation 2359
 Log Measured From KELLY BUSHING 7' A.G.L.
 Drilling Measured From KELLY BUSHING
 Other Services CDL/CNL DIL
 Elevation
 K.B. 2366
 D.F. 2364
 G.L. 2359

Date	1/3/22
Run Number	TWO
Depth Driller	4385
Depth Logger	4384
Bottom Logged Interval	4382
Top Log Interval	3500
Casing Driller	8 5/8"@210'
Casing Logger	210
Bit Size	7 7/8"
Type Fluid in Hole	CHEMICAL MUD
Density / Viscosity	9.0/58
pH / Fluid Loss	11.0/7.2
Source of Sample	FLOWLINE
Rm @ Meas. Temp	1.30@60F
Rmf @ Meas. Temp	.975@60F
Rmc @ Meas. Temp	1.56@60F
Source of Rmf / Rmc	MEASUREMENT
Rm @ BHT	.656@119F
Time Circulation Stopped	4 HOURS
Time Logger on Bottom	11:00 A.M.
Maximum Recorded Temperature	119F
Equipment Number	922339
Location	HAYS, KANSAS
Recorded By	JEFF LUEBBERS
Witnessed By	ELI J. FELTS

<<< Fold Here >>>

All interpretations are opinions based on inferences from electrical or other measurements and we cannot and do not guarantee the accuracy or correctness of any interpretation, and we shall not, except in the case of gross or willful negligence on our part, be liable or responsible for any loss, costs, damages, or expenses incurred or sustained by anyone resulting from any interpretation made by any of our officers, agents or employees. These interpretations are also subject to our general terms and conditions set out in our current Price Schedule.

15-063-22389-00-00 Comments

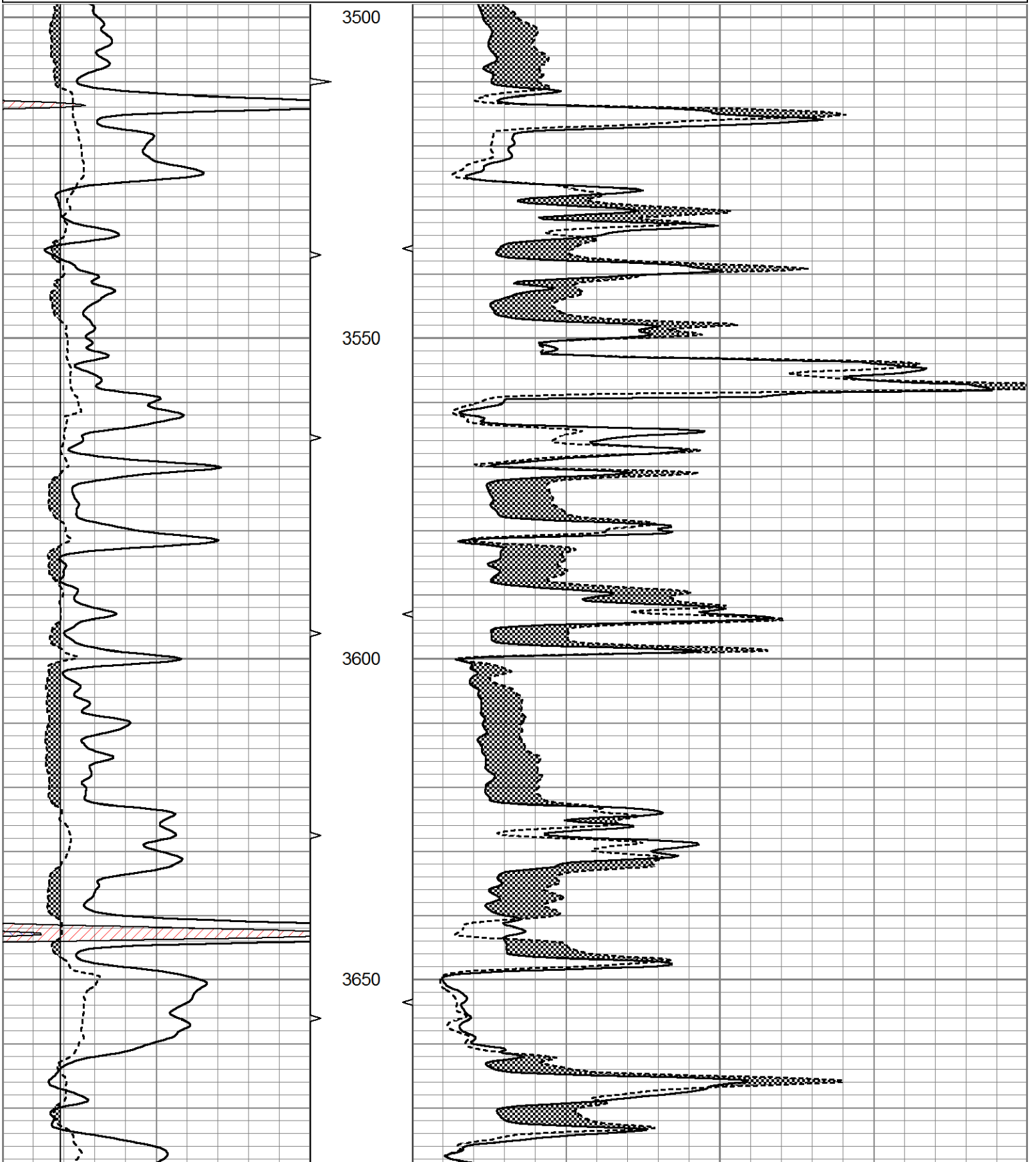
THANK YOU FOR USING ELI WIRELINE HAYS, KANSAS (785) 628-6395
 DIRECTIONS
 I-70 & COLLYER EXIT, 13S. ON "BANNER RD." TO "RD. U", 3W. TO "GOVE 80", 4S., CURVE E. & S.,
 GO BACK W. 1 MILE & S. INTO

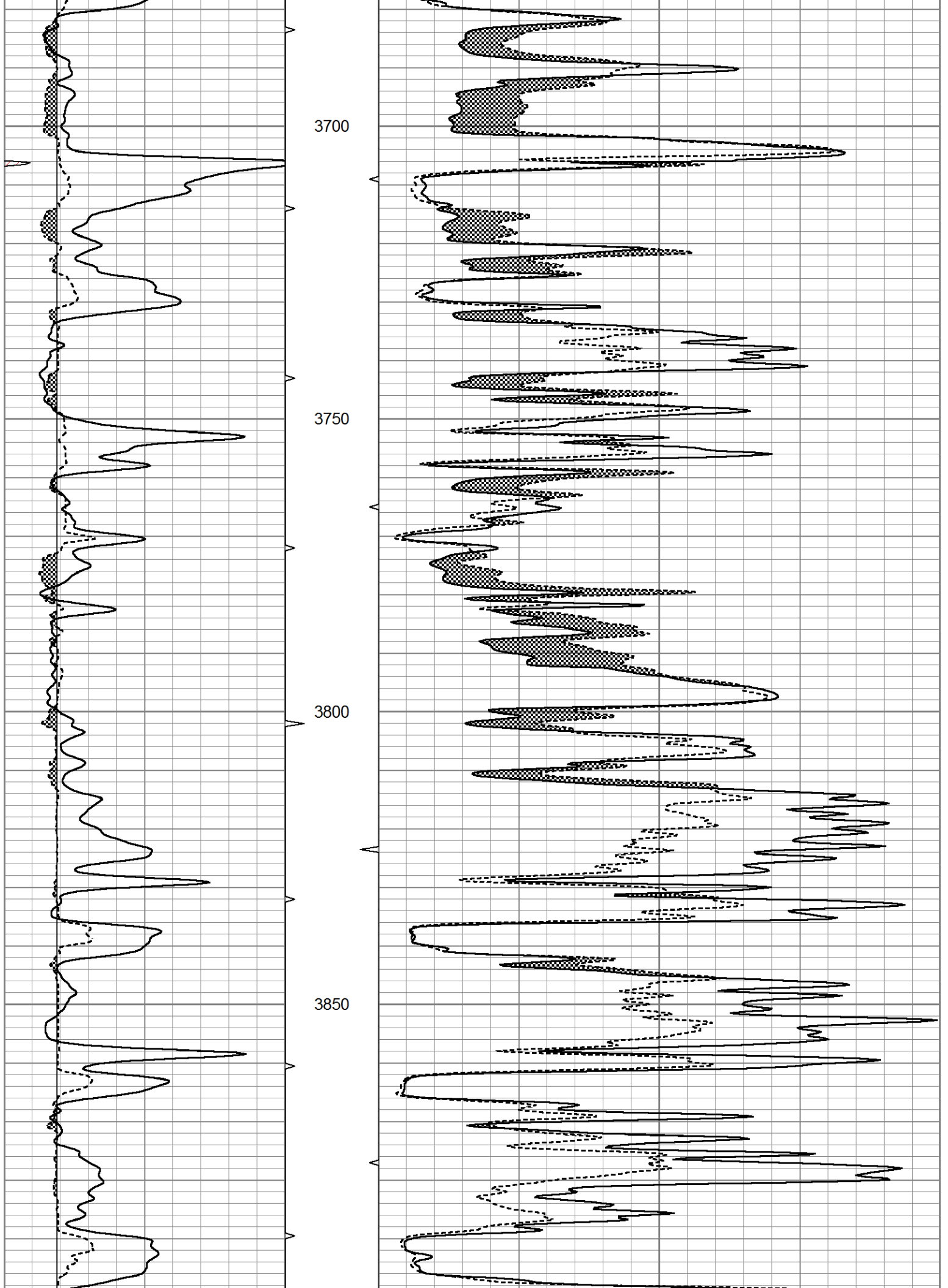


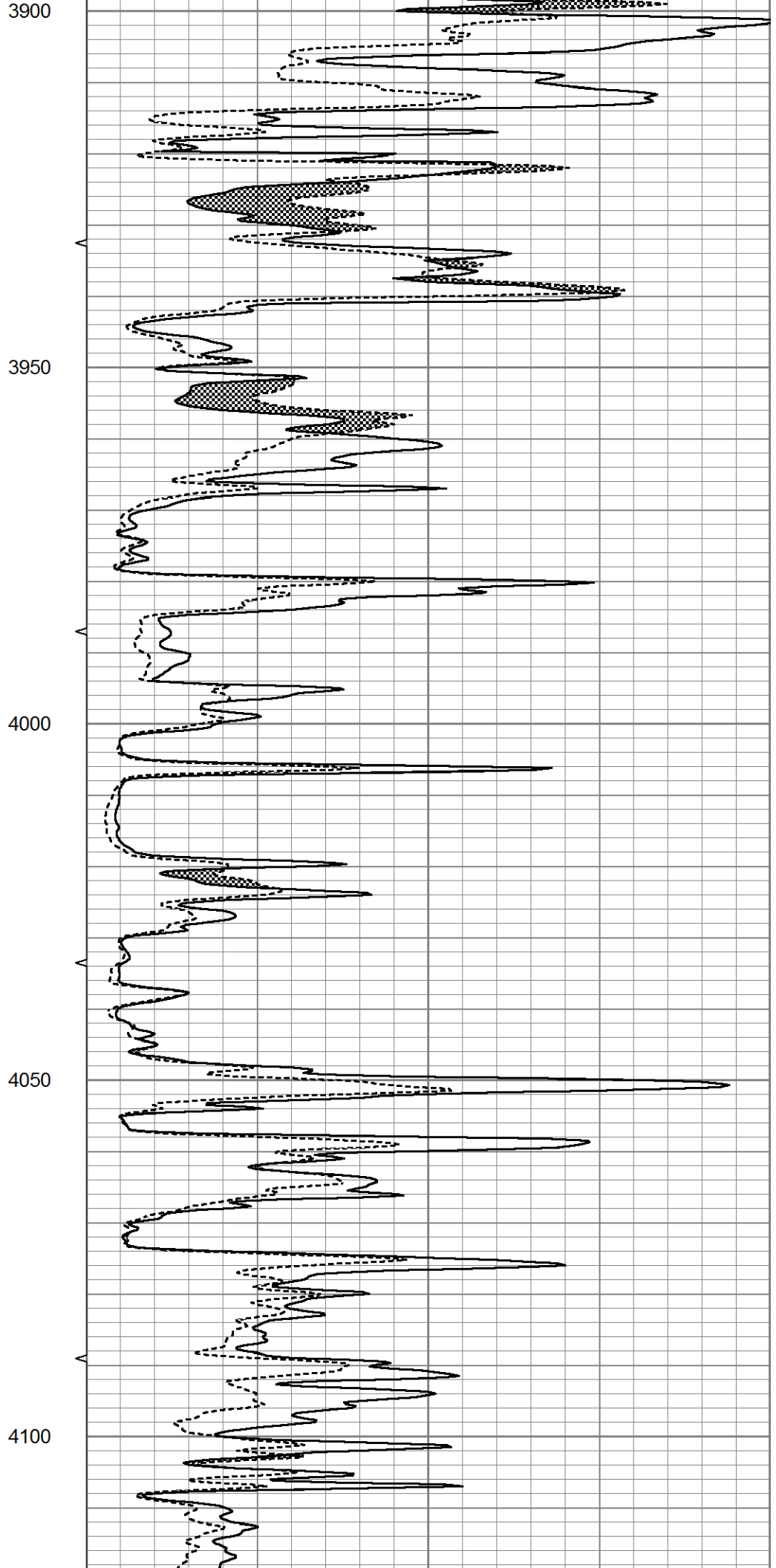
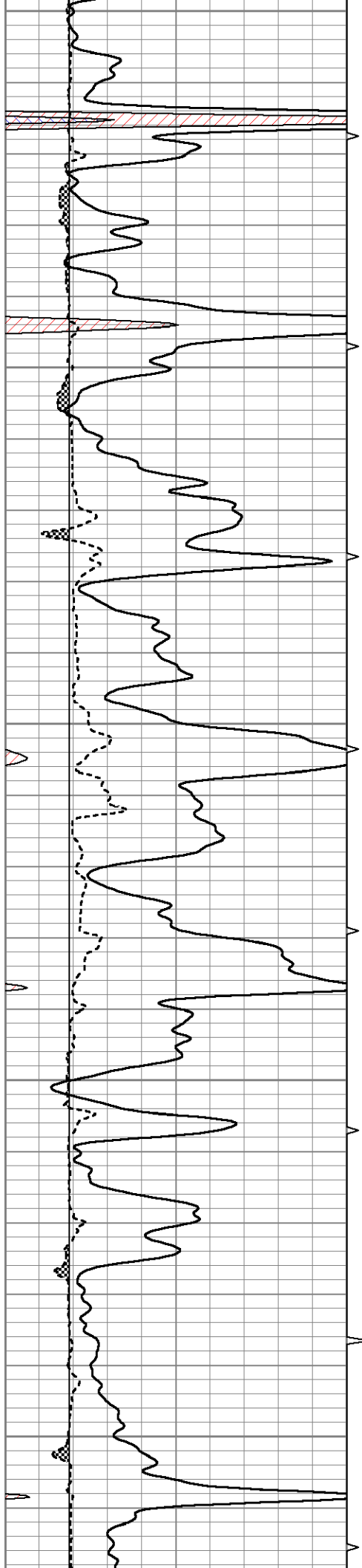
MAIN SECTION

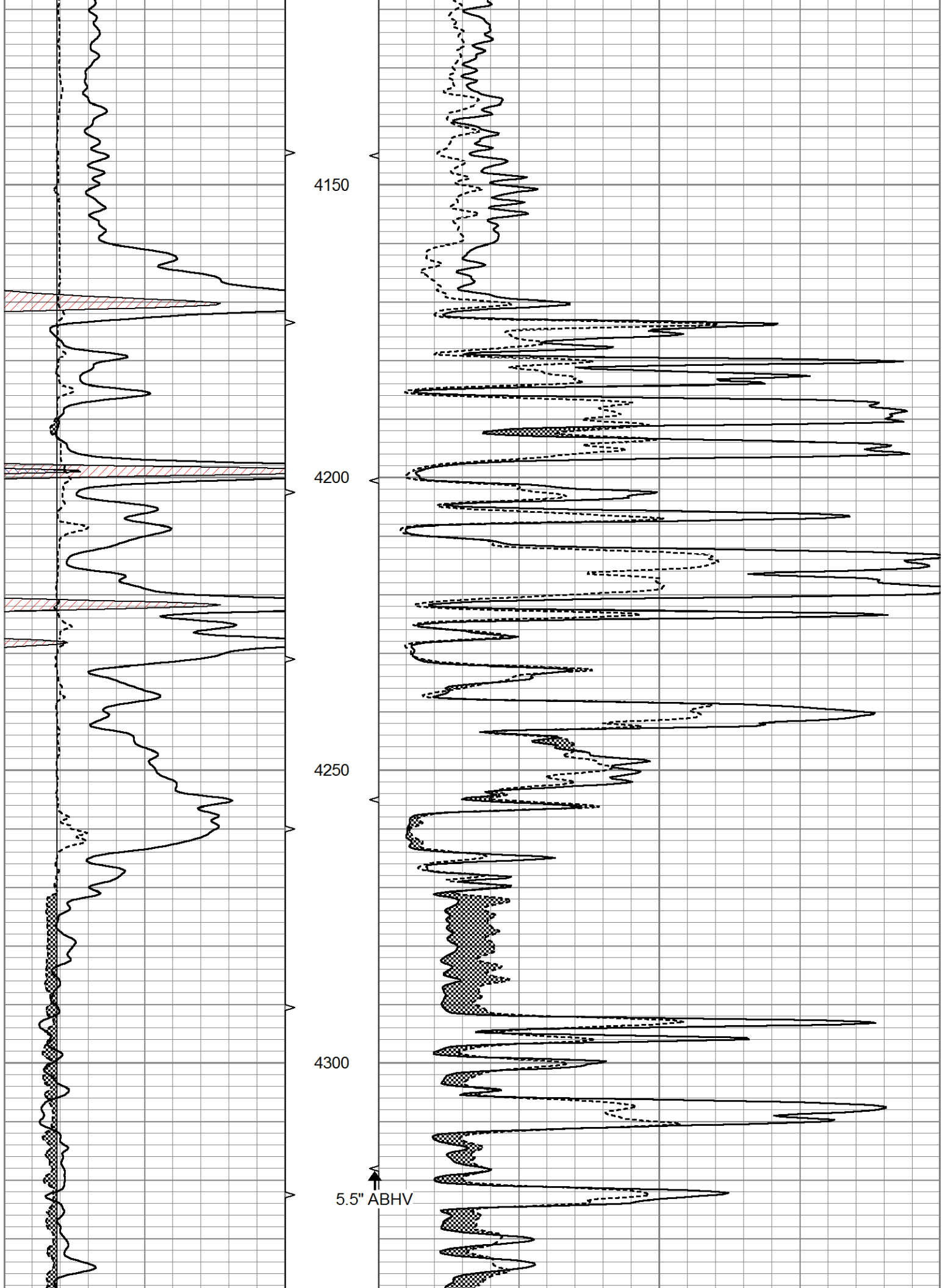
Database File 5931ddn.db
 Dataset Pathname pass6.2
 Presentation Format micro
 Dataset Creation Mon Jan 03 12:14:18 2022
 Charted by Depth in Feet scaled 1:240

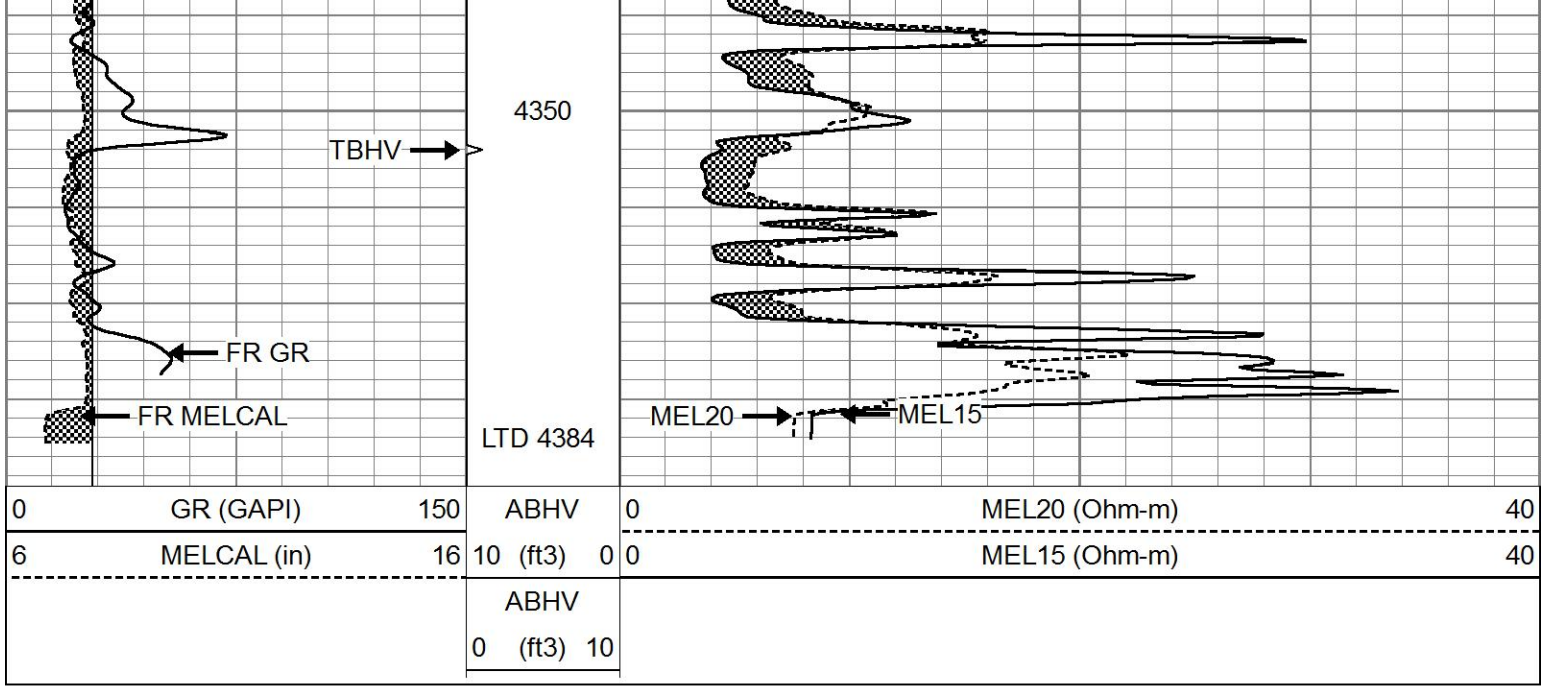
0	GR (GAPI)	150	ABHV	0	MEL20 (Ohm-m)	40
6	MELCAL (in)	16	10 (ft3)	0	MEL15 (Ohm-m)	40
			ABHV			
			0 (ft3)	10		







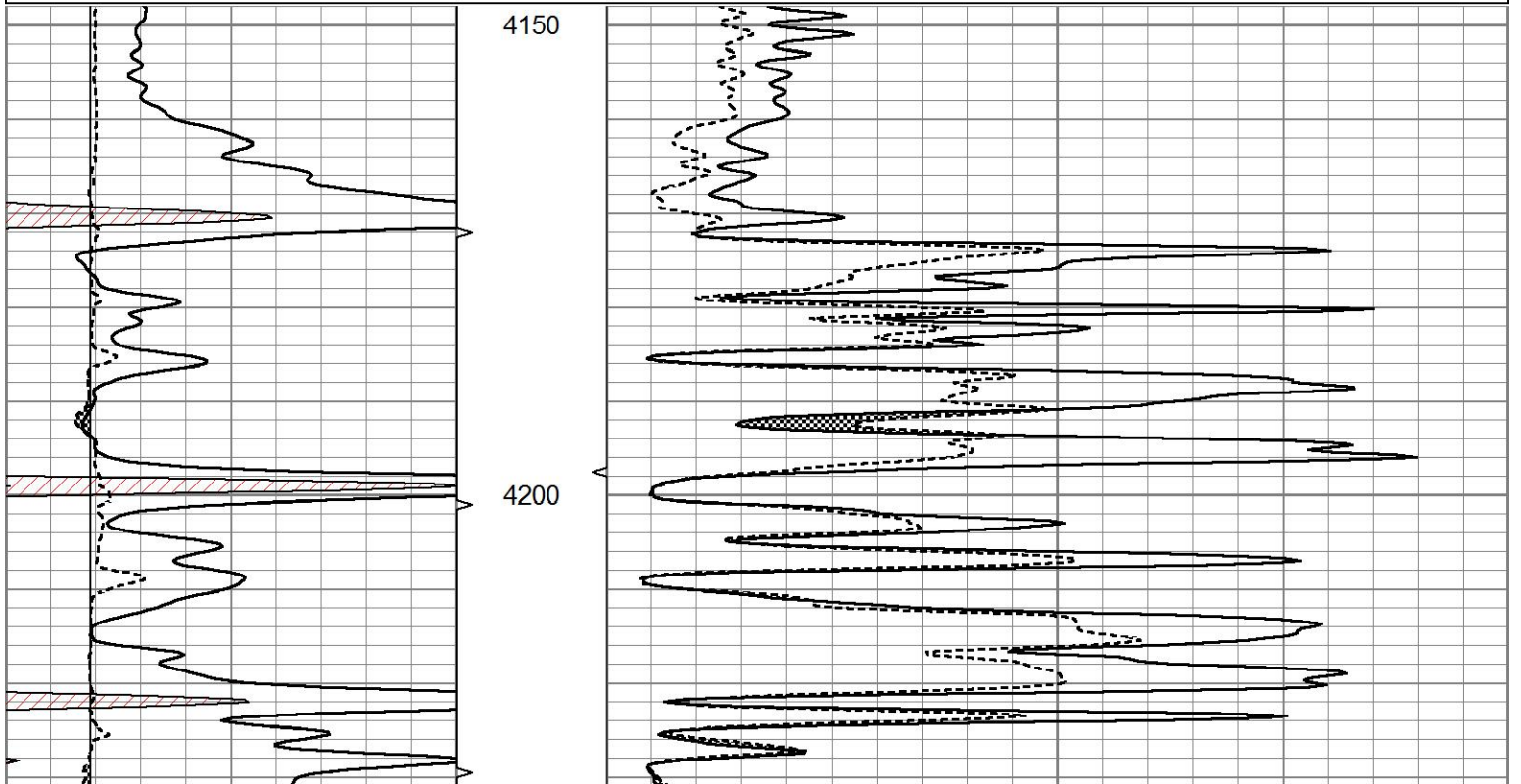


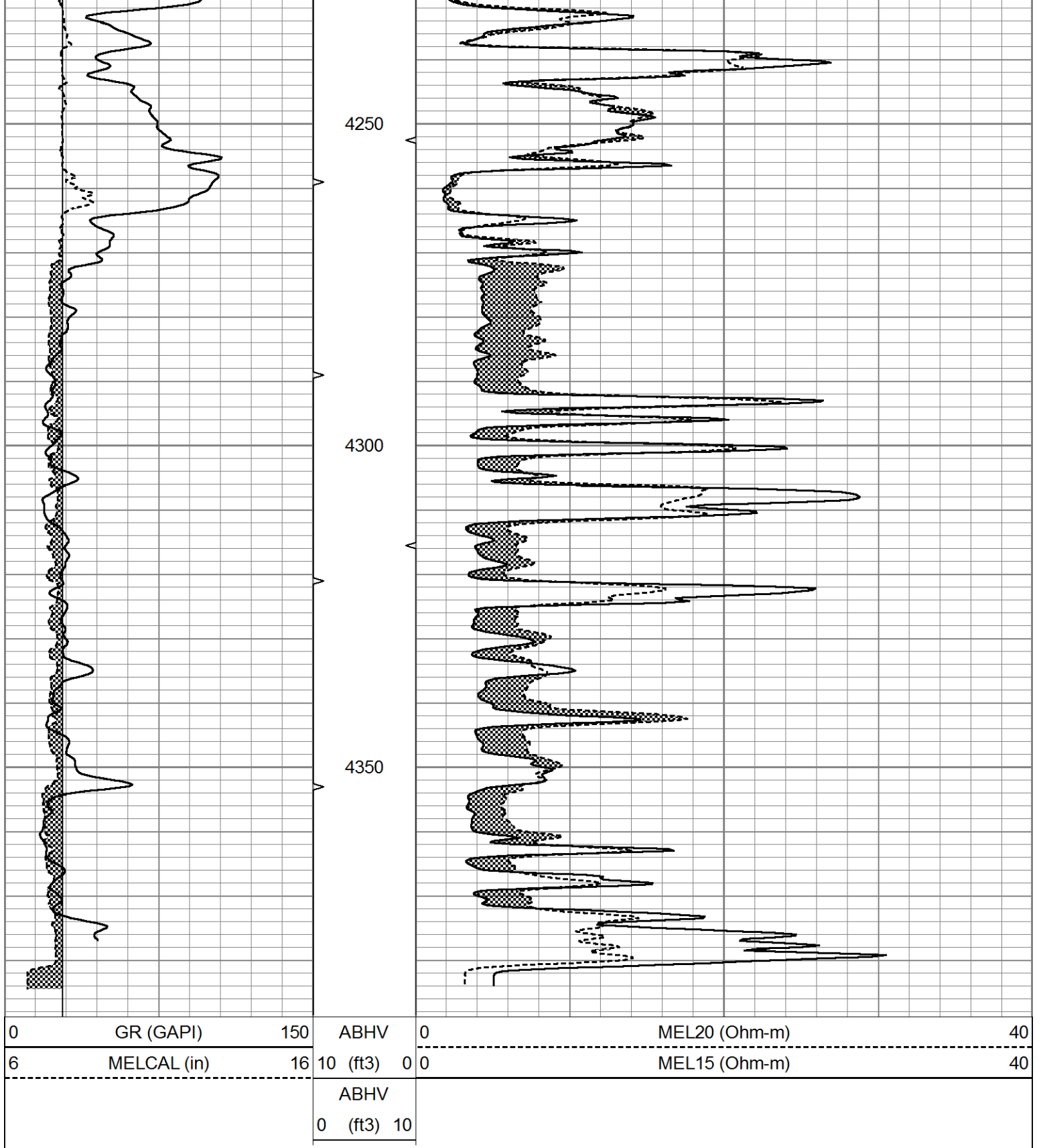


REPEAT SECTION

Database File 5931ddn.db
 Dataset Pathname pass5.1
 Presentation Format micro
 Dataset Creation Mon Jan 03 11:47:48 2022
 Charted by Depth in Feet scaled 1:240

0	GR (GAPI)	150	ABHV	0	MEL20 (Ohm-m)	40
6	MELCAL (in)	16	10 (ft3)	0	MEL15 (Ohm-m)	40
			ABHV			
			0 (ft3)	10		





Calibration Report

Database File 5931ddn.db
 Dataset Pathname pass6.2
 Dataset Creation Mon Jan 03 12:14:18 2022

MICRO Calibration Report

Serial Number: 070910
 Tool Model: ProbeN
 Performed: Sat Jan 01 22:56:37 2022

Caliper Calibration: Gain=5.405 Offset=-0.216

	Low Cal	High Cal
References	8.000	16.000
Readings	1.520	3.000

1.5" Calibration: Gain=18.000 Offset=0.300

	Low Cal	High Cal
References	0.000	20.000
Readings	0.000	1.216

2" Calibration: Gain=35.000 Offset=-0.800

	Low Cal	High Cal
References	0.000	20.000
Readings	0.002	1.053

Gamma Ray Calibration Report

Serial Number: 070558
Tool Model: OPEN_GR
Performed: Mon Jan 03 12:08:23 2022

Calibrator Value: 1.0 GAPI

Background Reading: 0.0 cps
Calibrator Reading: 1.0 cps

Sensitivity: 0.2800 GAPI/cps