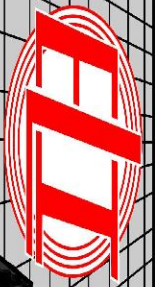


MICRO LOG



Company RL INVESTMENT, LLC.  
 Well BOLLIG "A" #3  
 Field GURK EAST  
 County GRAHAM State KANSAS

Location: 1275' FNL & 550' FWL  
 API #: 15-065-24210-0000  
 SEC 17 TWP 10S RGE 25W  
 Permanent Datum GROUND LEVEL Elevation 2525  
 Log Measured From KELLY BUSHING 7' A.G.L.  
 Drilling Measured From KELLY BUSHING  
 Other Services CDL/CNL DIL  
 Elevation K.B. 2532 D.F. 2530 G.L. 2525

Date	12/7/21
Run Number	TWO
Depth Driller	4100
Depth Logger	4098
Bottom Logged Interval	4096
Top Log Interval	3450
Casing Driller	8 5/8" @ 224
Casing Logger	224
Bit Size	7 7/8
Type Fluid in Hole	CHEMICAL MUD
Density / Viscosity	9.3/47
pH / Fluid Loss	10.0/8.0
Source of Sample	FLOWLINE
Rm @ Meas. Temp	1.30 @ 62F
Rmf @ Meas. Temp	0.97 @ 62F
Rmc @ Meas. Temp	1.56 @ 62F
Source of Rmf / Rmc	MEASUREMENT
Rm @ BHT	0.68 @ 117F
Time Circulation Stopped	2 HOURS
Time Logger on Bottom	////
Maximum Recorded Temperature	117F
Equipment Number	3802
Location	HAYS, KANSAS
Recorded By	JASON CAPPELLUCCI
Witnessed By	RICHARD BELL

<<< Fold Here >>>

All interpretations are opinions based on inferences from electrical or other measurements and we cannot and do not guarantee the accuracy or correctness of any interpretation, and we shall not, except in the case of gross or willful negligence on our part, be liable or responsible for any loss, costs, damages, or expenses incurred or sustained by anyone resulting from any interpretation made by any of our officers, agents or employees. These interpretations are also subject to our general terms and conditions set out in our current Price Schedule.

Comments

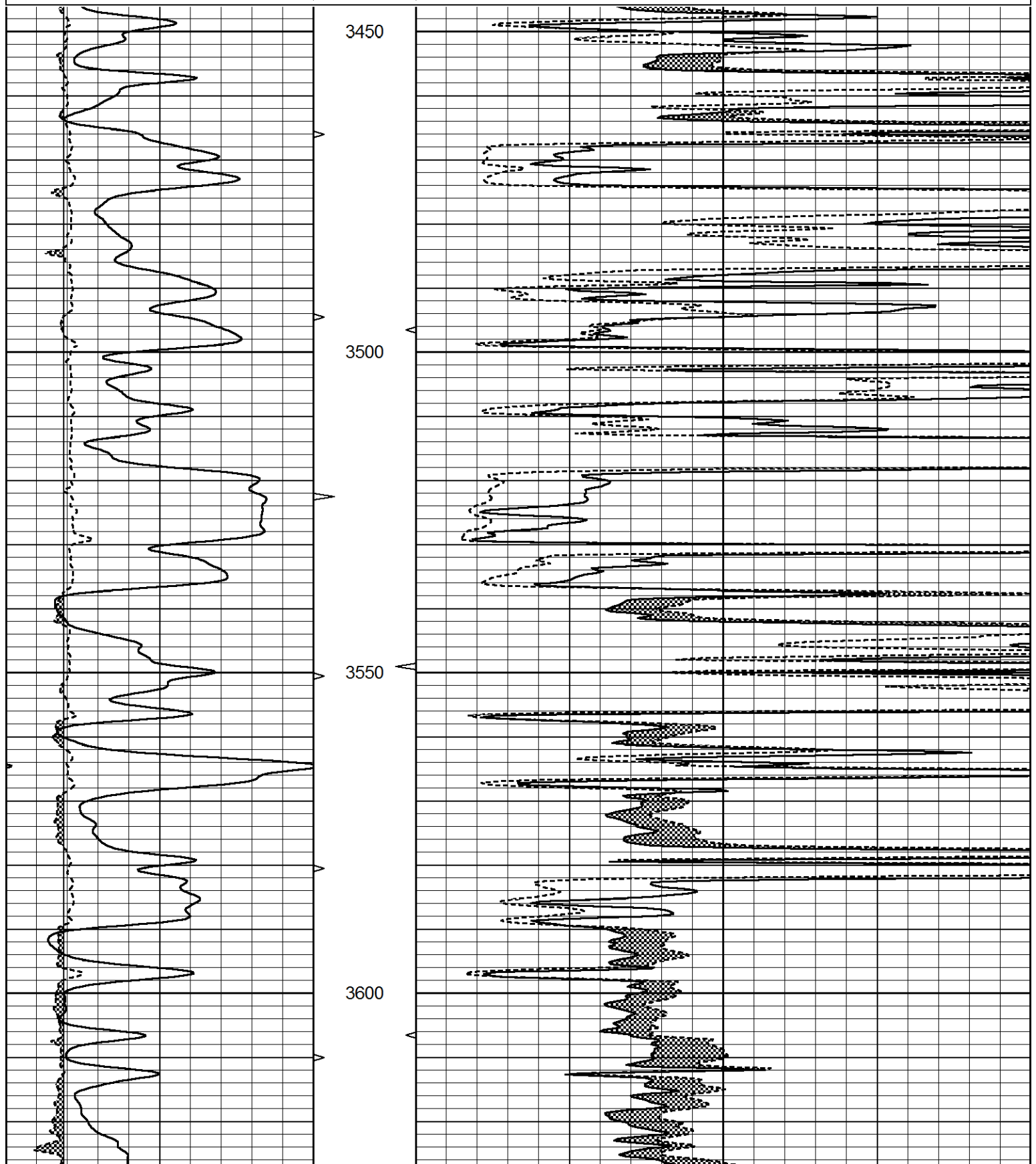
THANK YOU FOR USING ELI WIRELINE SERVICES, HAYS, KS. ( 785 ) 628-6395  
 DIRECTIONS  
 ST. PETER, KS. - 3 WEST ON RD. M - 1/2 SOUTH - EAST INTO

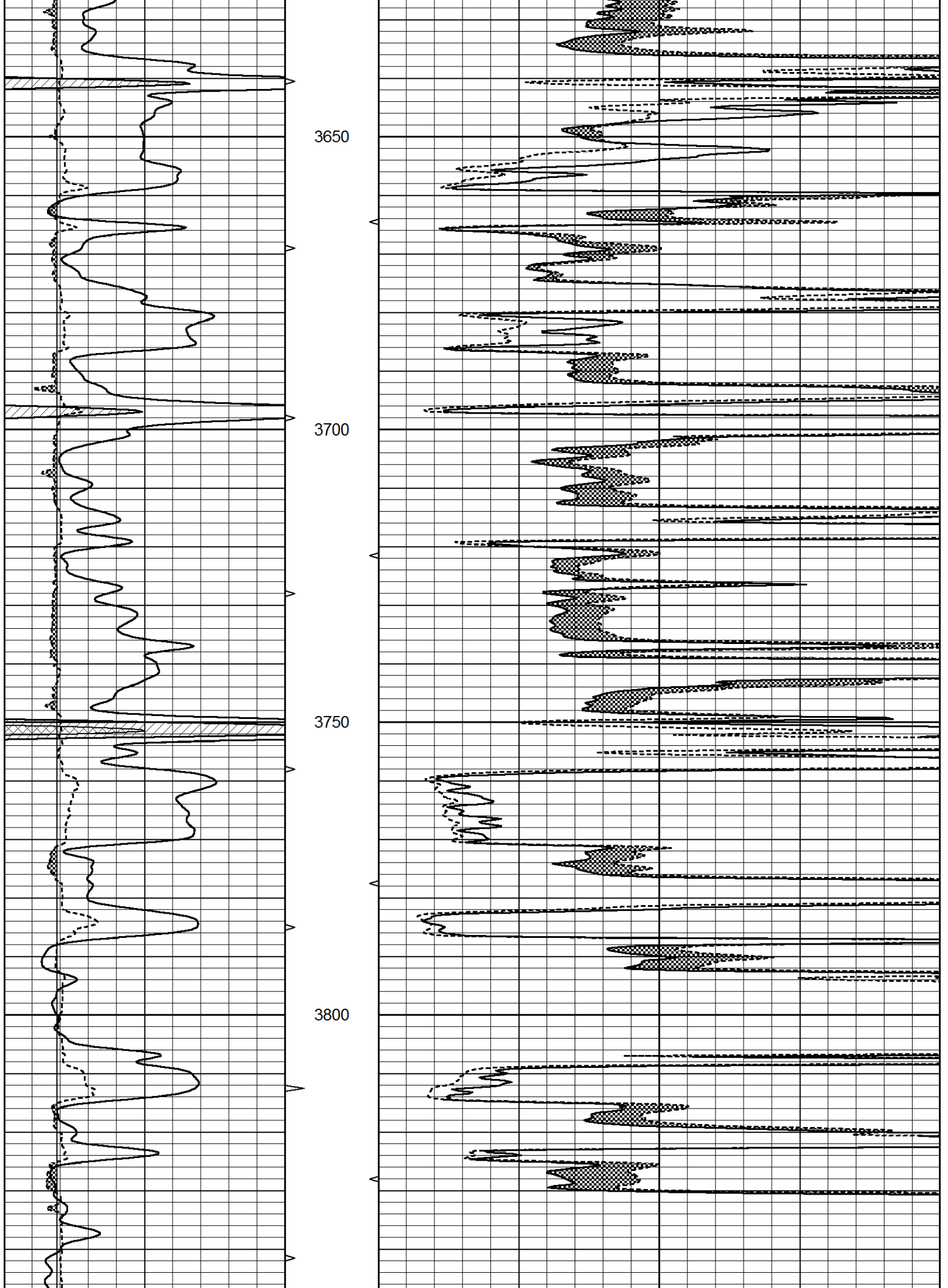


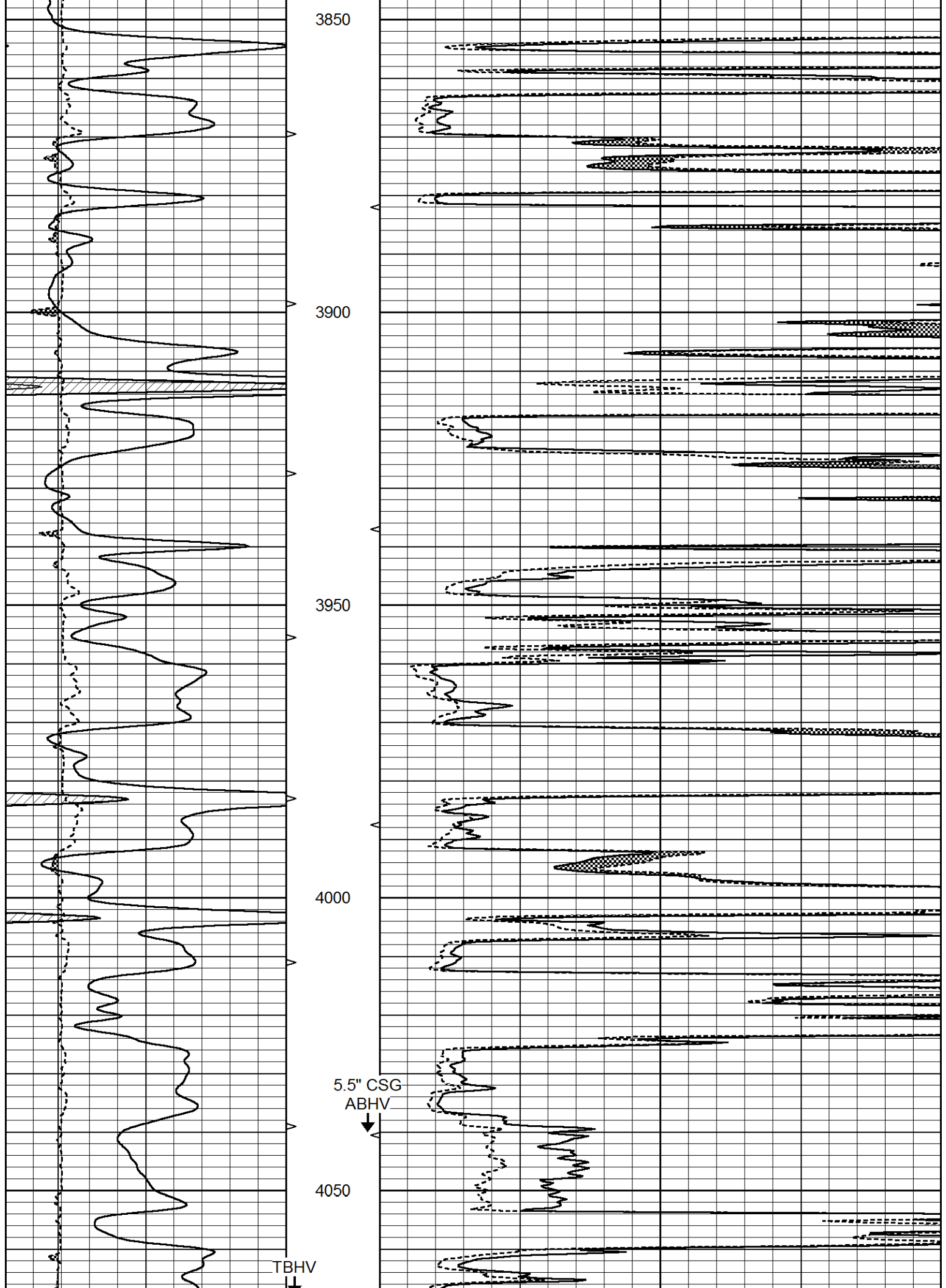
MAIN SECTION

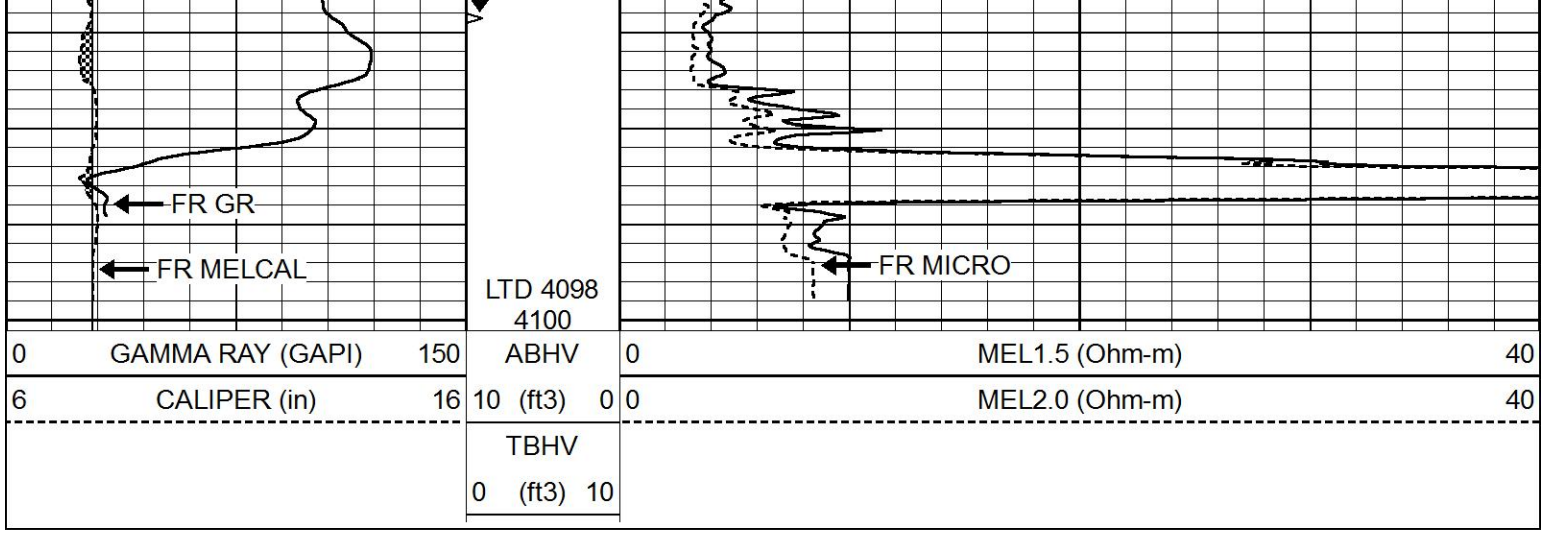
Database File 6060ddn.db  
 Dataset Pathname pass6.1  
 Presentation Format \_micro  
 Dataset Creation Tue Dec 07 16:43:14 2021  
 Charted by Depth in Feet scaled 1:240

0	GAMMA RAY (GAPI)	150	ABHV	0	MEL1.5 (Ohm-m)	40
6	CALIPER (in)	16	10 (ft3)	0	MEL2.0 (Ohm-m)	40
			TBHV			
			0 (ft3)	10		





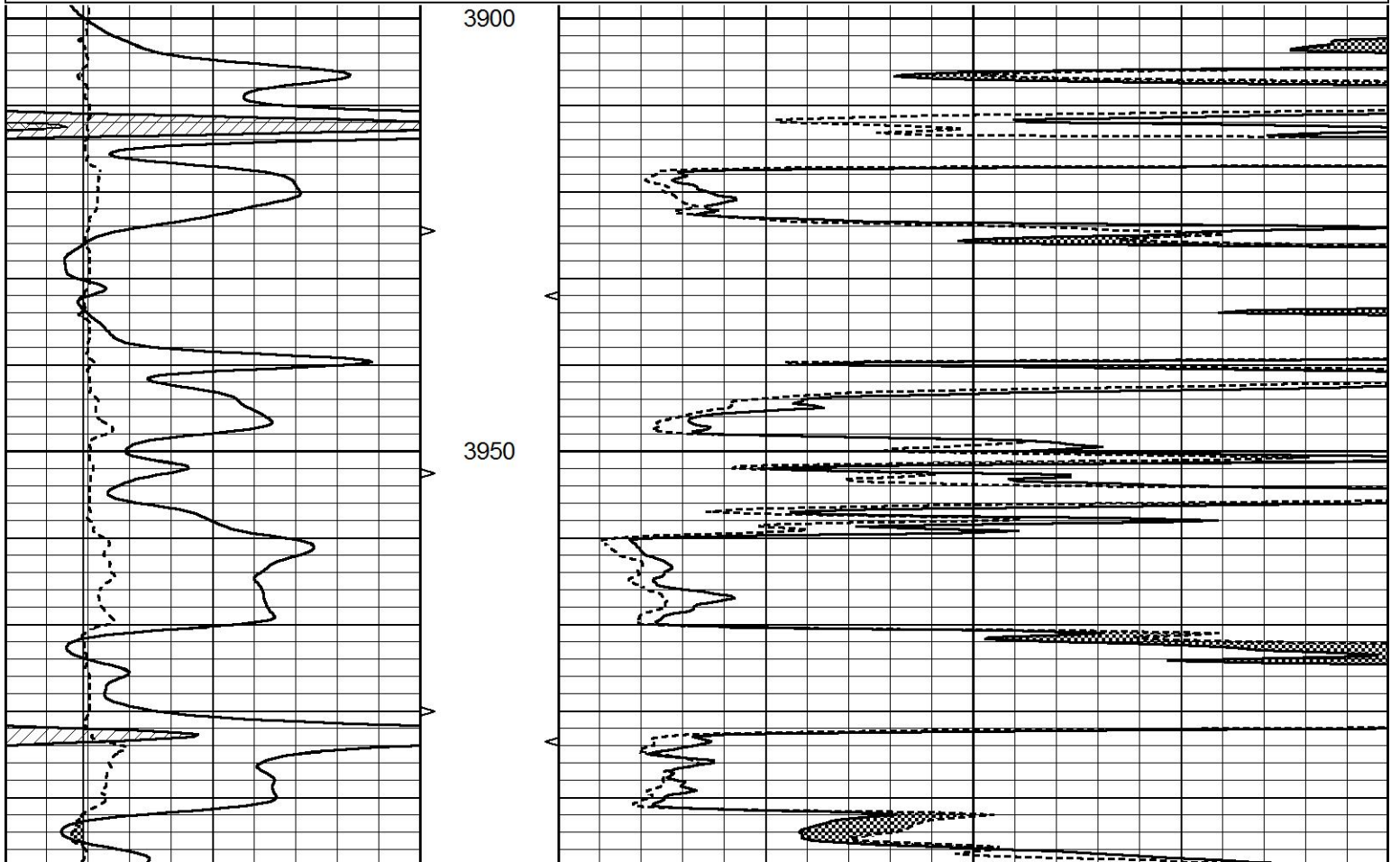


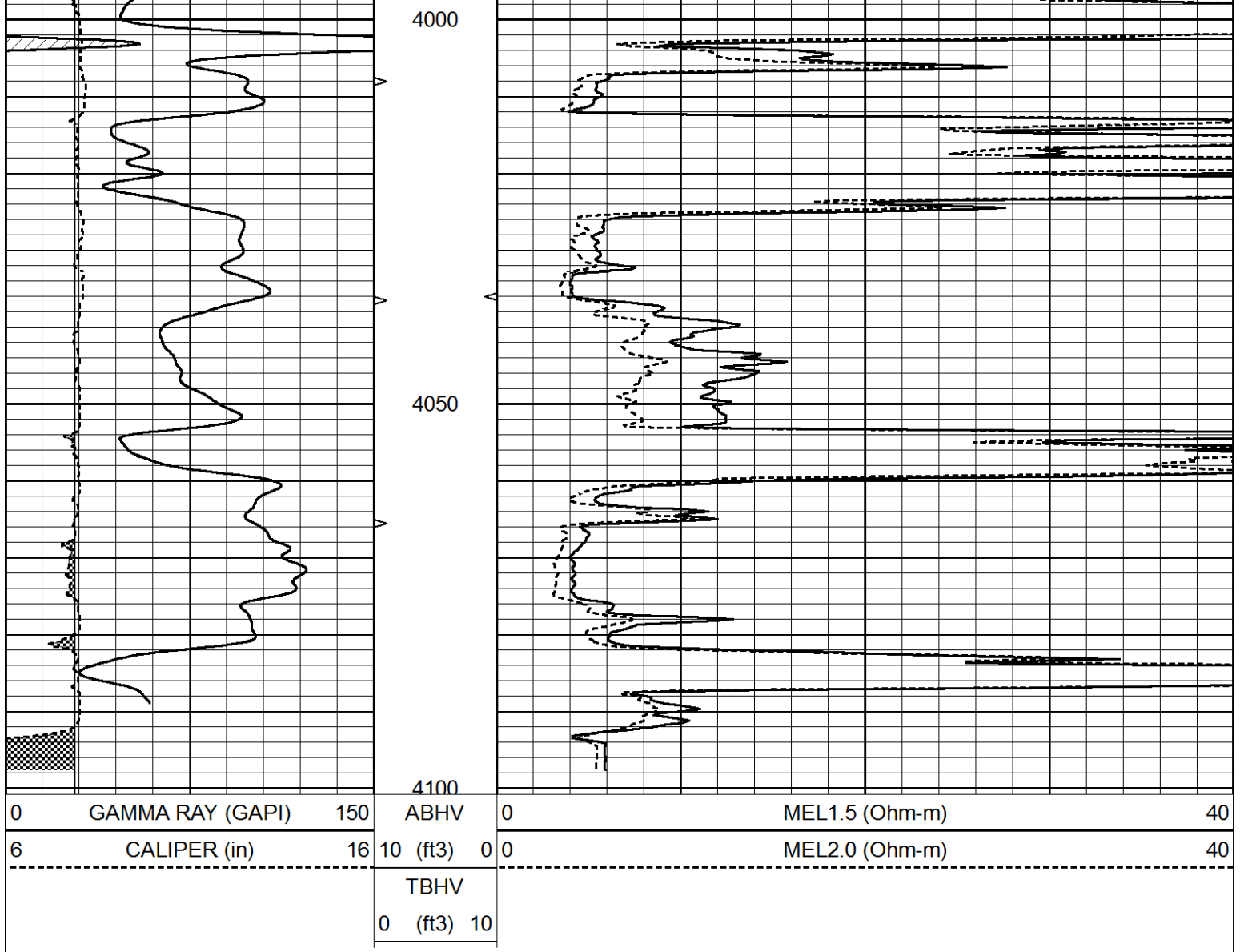


# REPEAT SECTION

Database File 6060ddn.db  
 Dataset Pathname pass5.1  
 Presentation Format \_micro  
 Dataset Creation Tue Dec 07 16:33:24 2021  
 Charted by Depth in Feet scaled 1:240

0	GAMMA RAY (GAPI)	150	ABHV	0	MEL1.5 (Ohm-m)	40
6	CALIPER (in)	16	10 (ft3) 0	0	MEL2.0 (Ohm-m)	40
			TBHV			
			0 (ft3) 10			





### Calibration Report

Database File 6060ddn.db  
 Dataset Pathname pass5.1  
 Dataset Creation Tue Dec 07 16:33:24 2021

#### MICRO\_USR Calibration Report

Serial Number:	070911	
Tool Model:	ProbeL	
Performed:	Sun Dec 13 14:24:22 2020	
Caliper Calibration:	Gain=3.755	Offset=2.050
References	Low Cal	High Cal
Readings	8.000	14.000
	1.451	3.049
1.5" Calibration:	Gain=55.000	Offset=-0.700
References	Low Cal	High Cal
Readings	0.000	20.000
	0.004	0.843
2" Calibration:	Gain=50.000	Offset=-0.650
References	Low Cal	High Cal
Readings	0.000	20.000
	0.021	0.810

Microlog Calibration Report

Serial-Model: 070911-ProbeL  
 Performed: Sat Apr 11 01:13:01 2015

	Readings			References			Results	
	Zero	Cal		Zero	Cal		m	b
Normal	0.0002	0.4836	V	0.0000	10.0000	Ohm-m	20.6908	-0.0051
Inverse	0.0018	0.6297	V	0.0000	10.0000	Ohm-m	15.9263	-0.0282
Caliper	0.0000	1.0000	V	0.0000	1.0000	in	1.0000	0.0000

Gamma Ray Calibration Report

Serial Number: 070558  
 Tool Model: Probe1  
 Performed: Fri Oct 30 21:32:56 2020

Calibrator Value: 1.0 GAPI

Background Reading: 0.0 cps  
 Calibrator Reading: 1.0 cps

Sensitivity: 0.2700 GAPI/cps