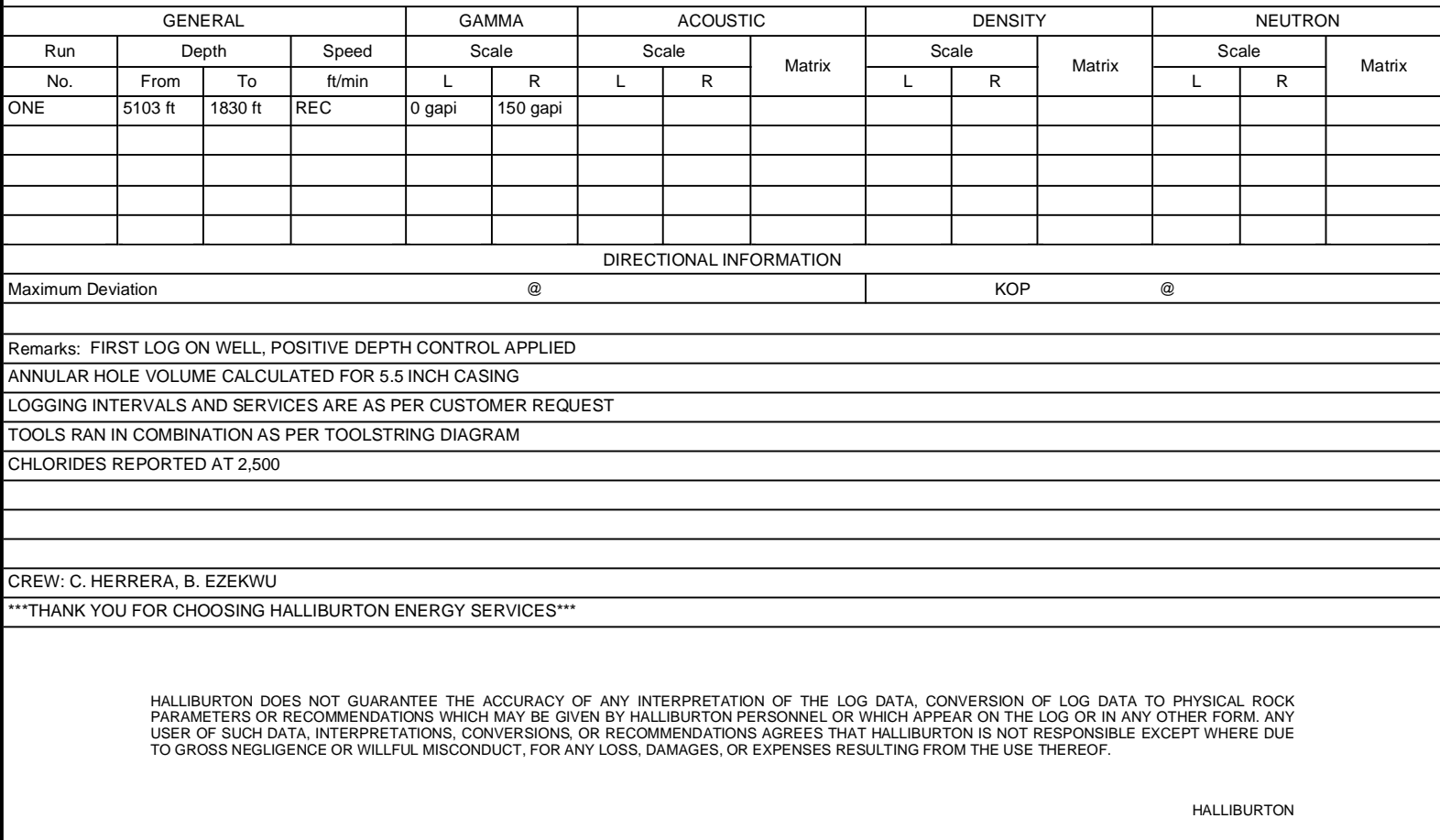
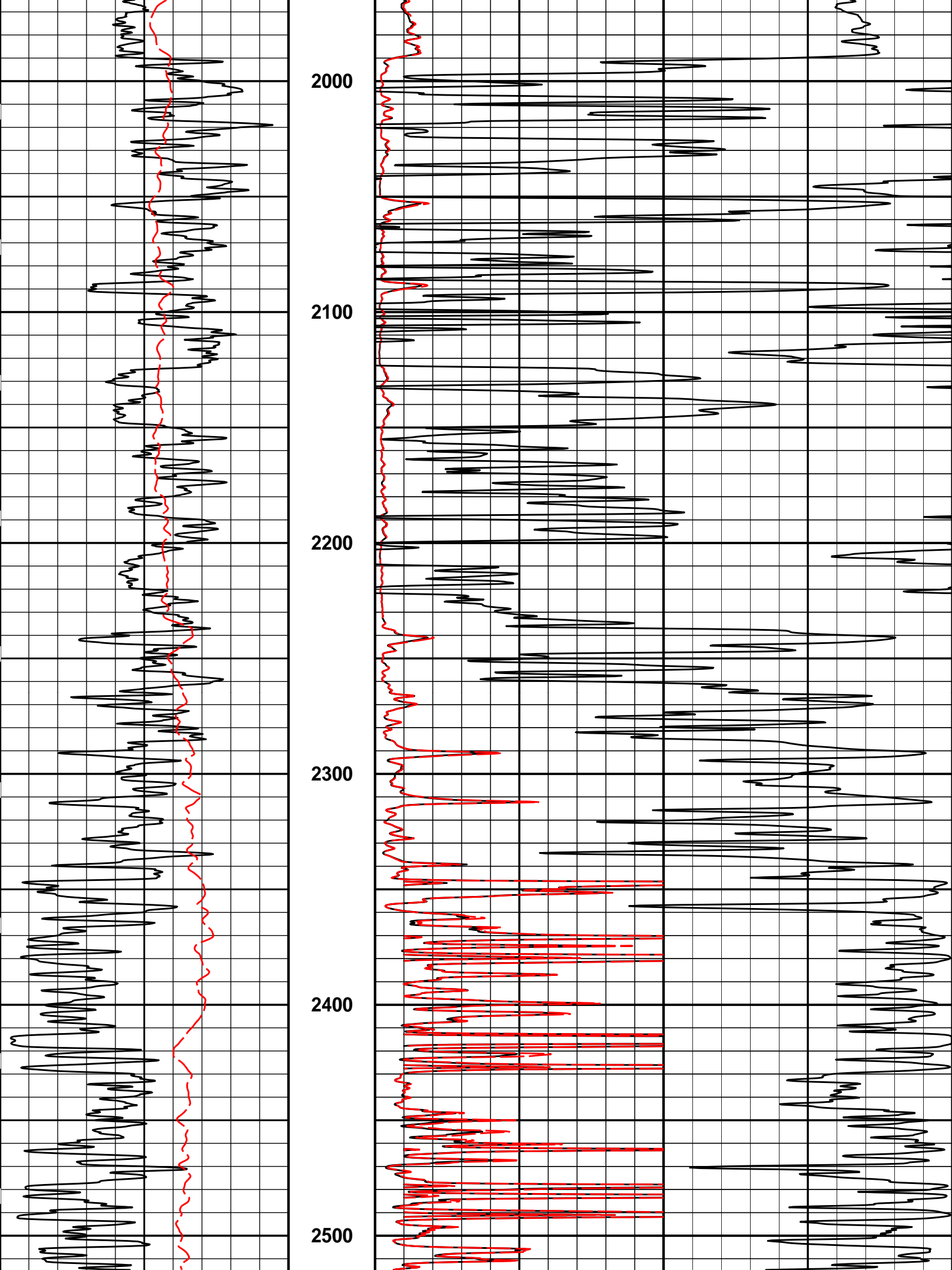


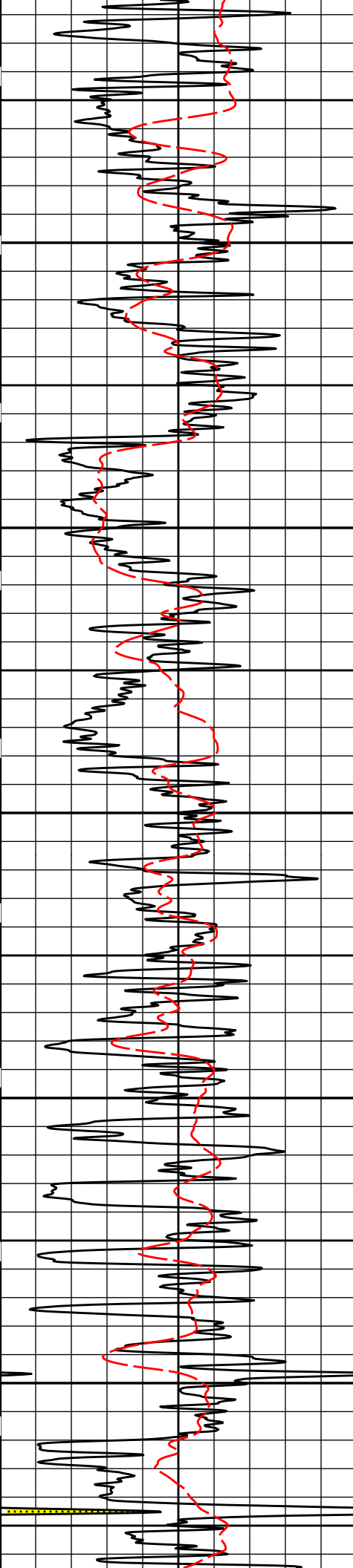
ARRAY COMPENSATED  
TRUE RESISTIVITY  
LOG  
2 INCH

Fold here

## LOGGING DATA







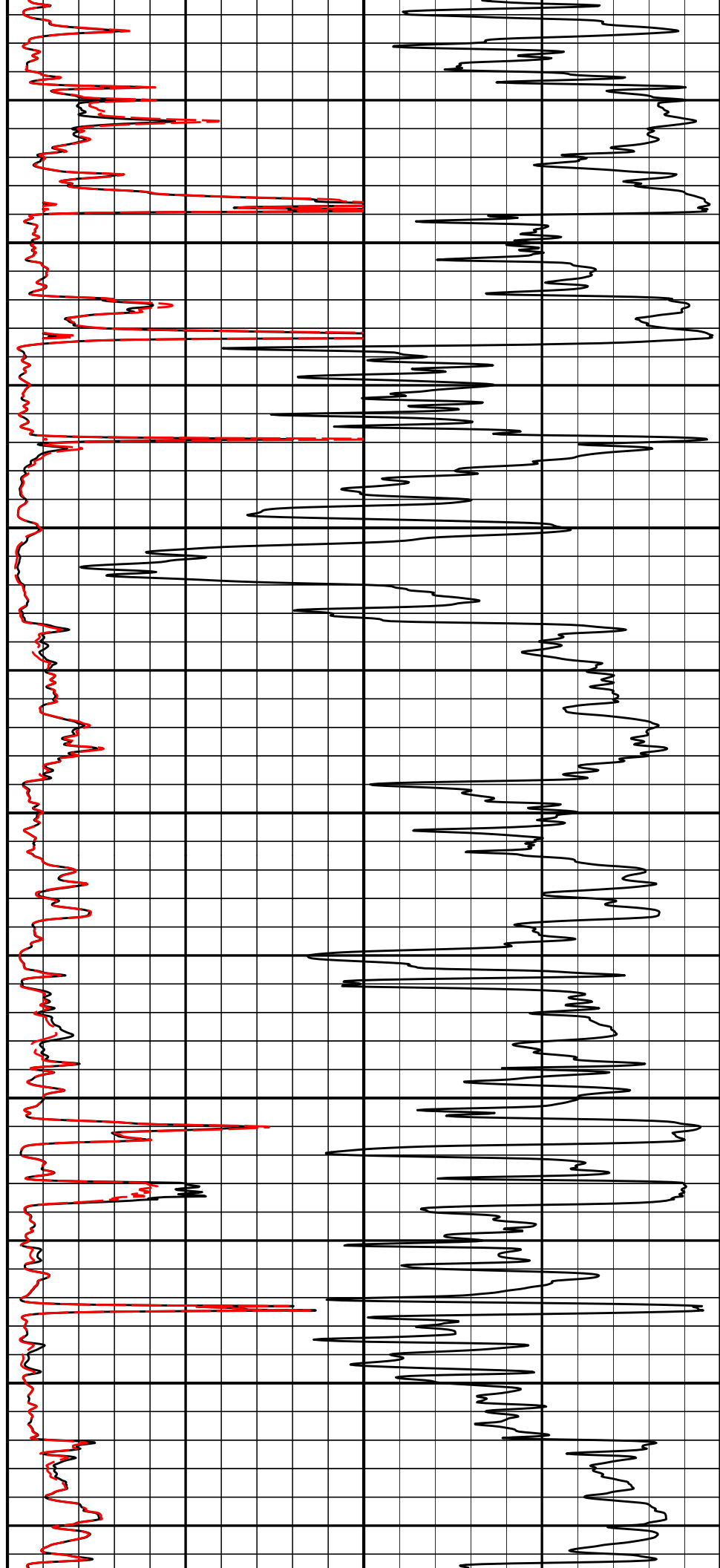
2600

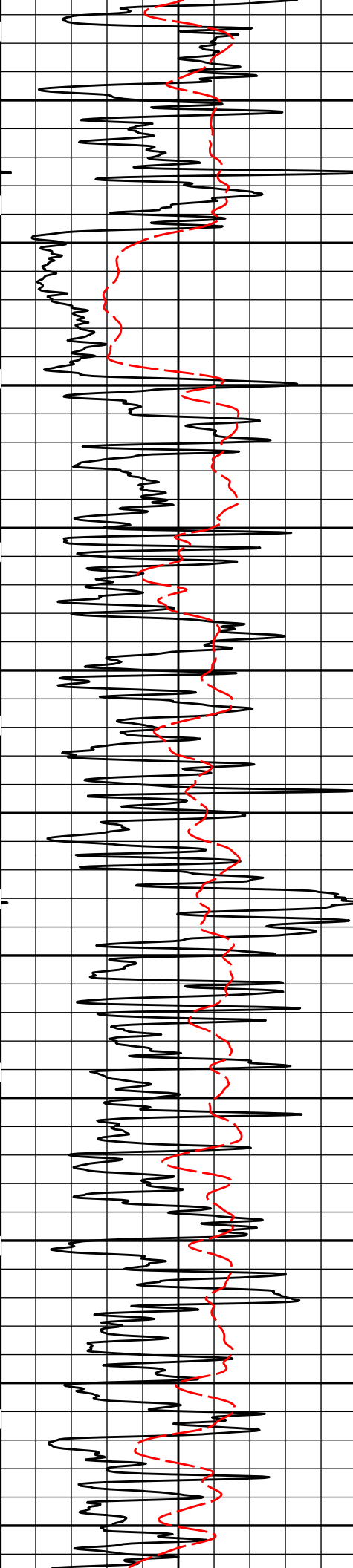
2700

2800

2900

3000





3100

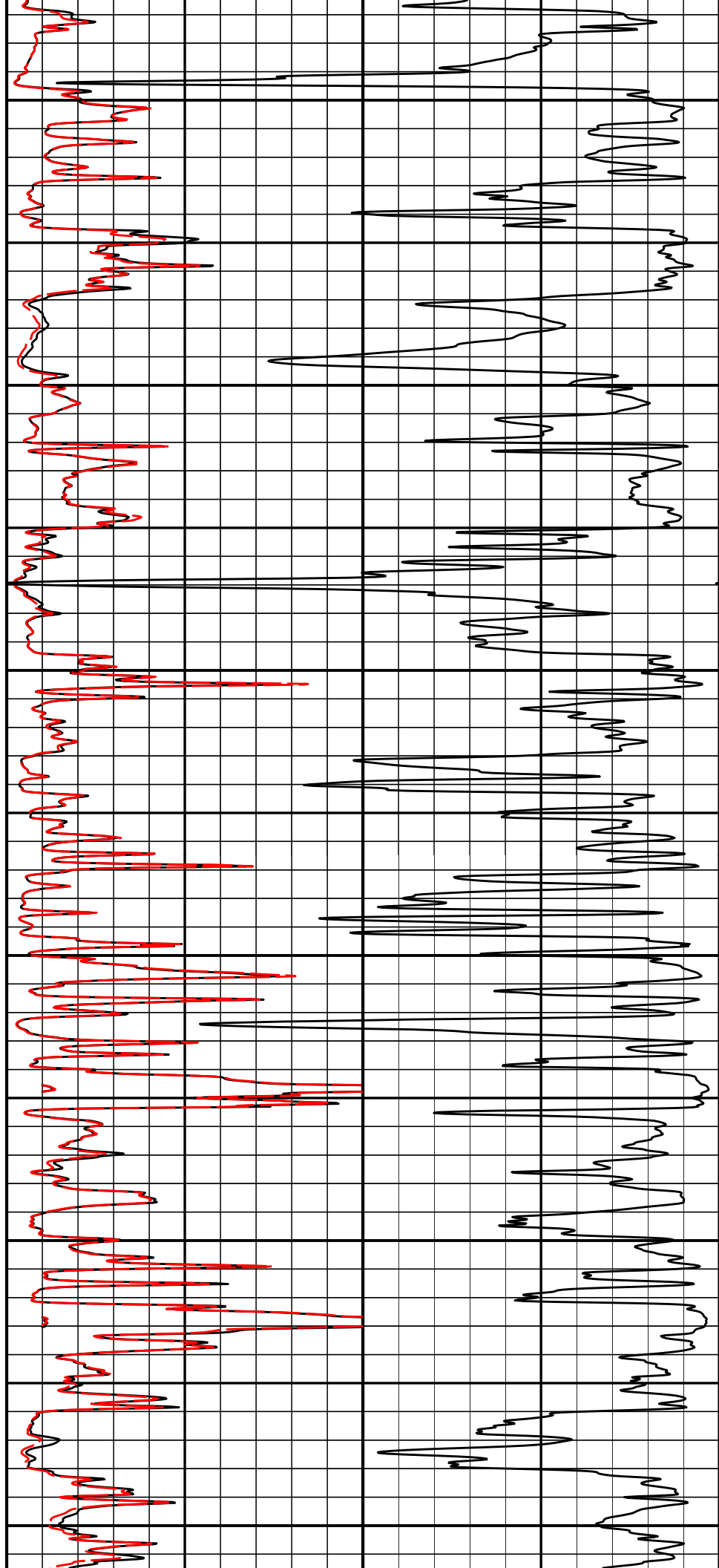
3200

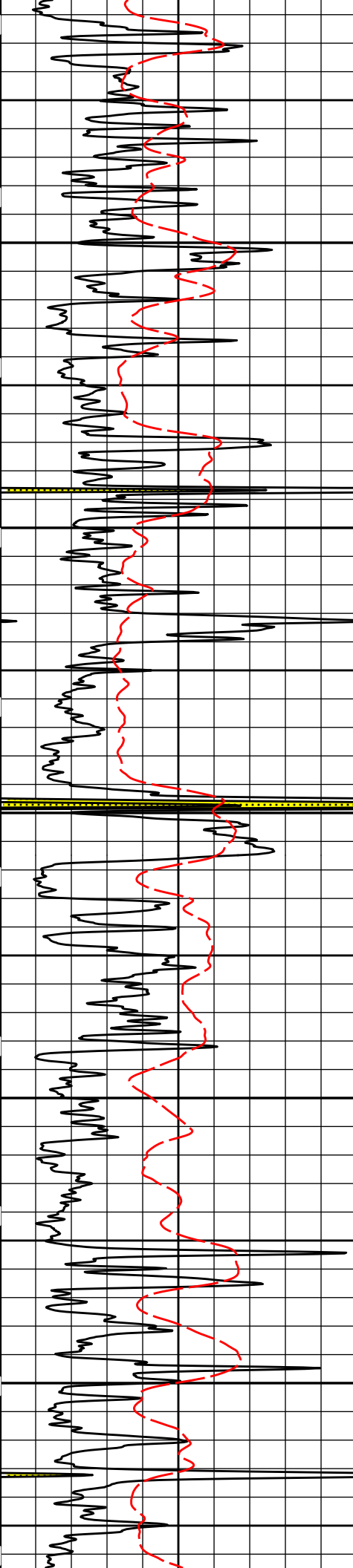
3300

3400

3500

3600





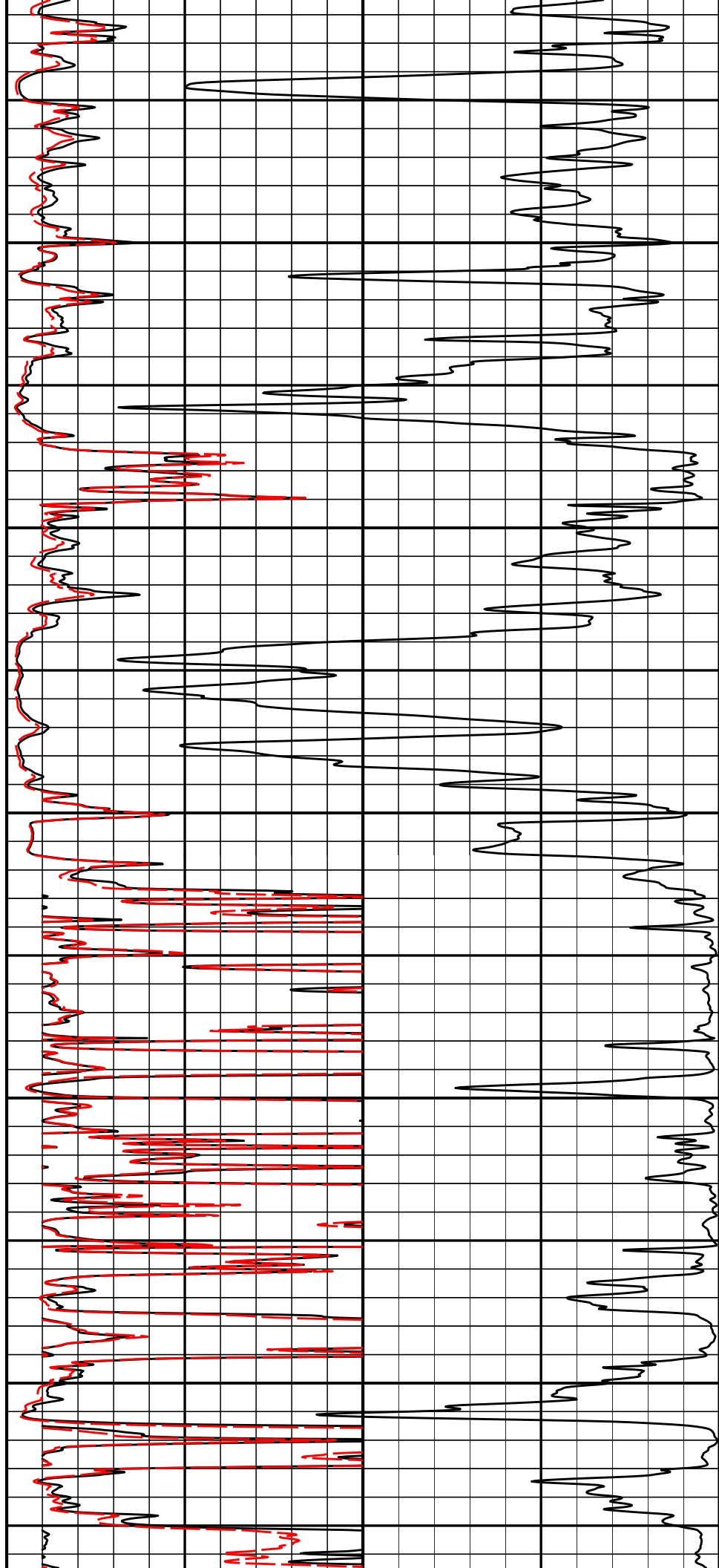
3700

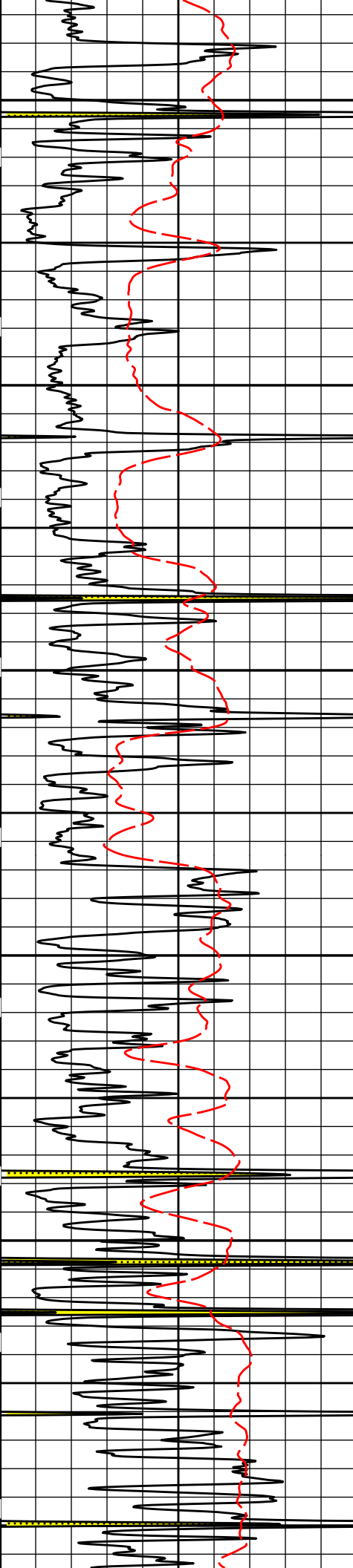
3800

3900

4000

4100





4200

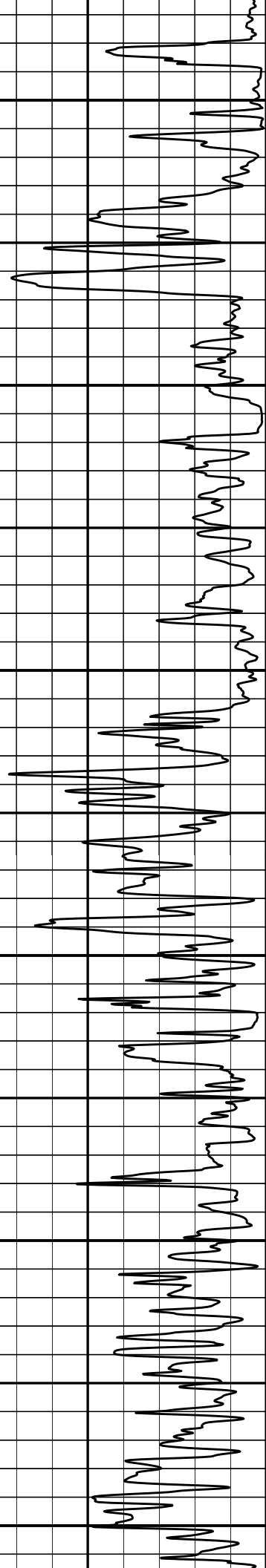
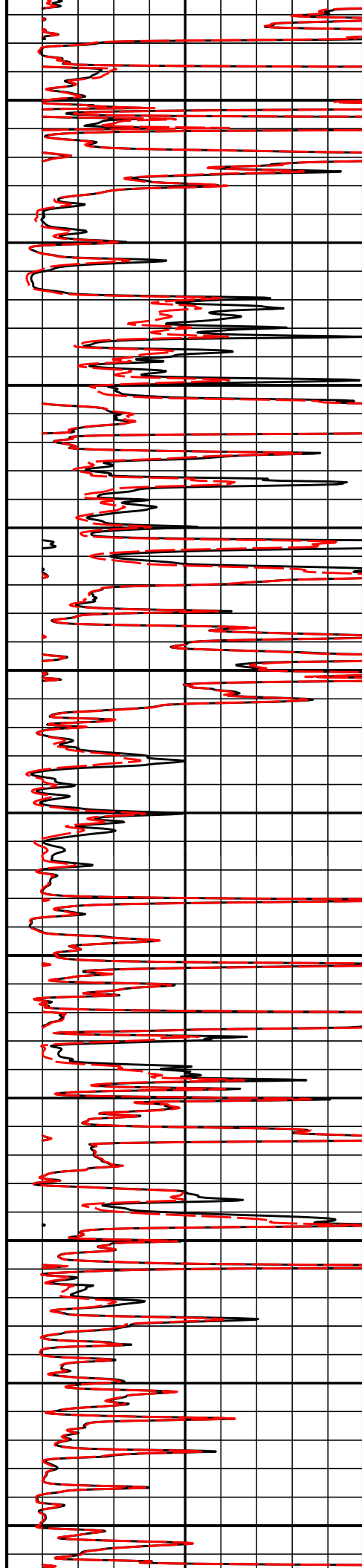
4300

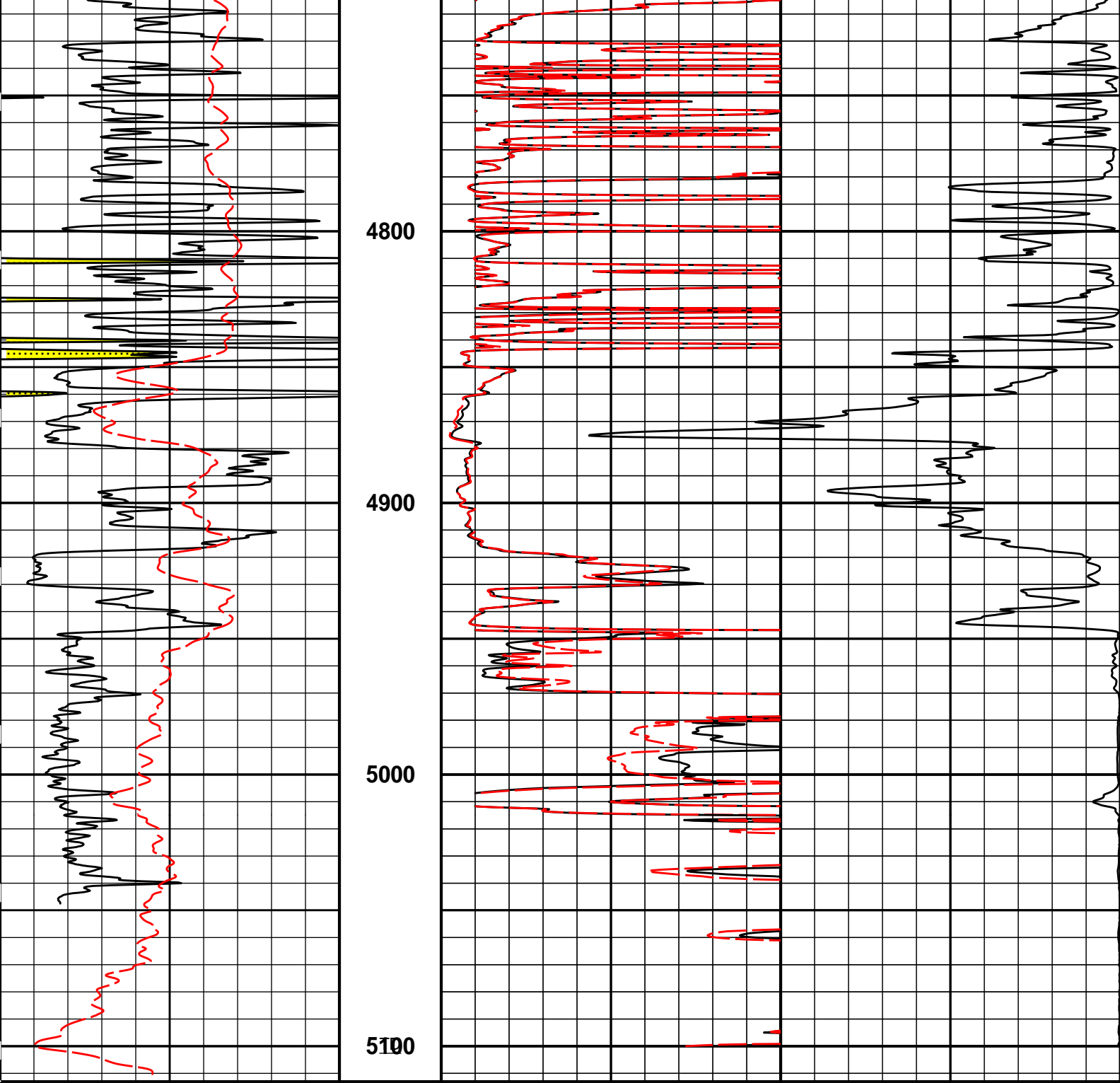
4400

4500

4600

4700





0	Gamma API	150	1 : 600 ft	0	20in Resistivity 2ft Res	50	
	api				ohm-metre		
	SP			0	90in Resistivity 2ft Res	50	
	-]20[+				ohm-metre		
				1000	90in Conductivity 2ft Res		0
					mmho per metre		

**HALLIBURTON**

Plot Time: 08-Mar-22 23:30:38  
Plot Range: 1820 ft to 5112.92 ft  
Data: 03\_08\_MERIT\Well Based\DAQ-0001-004\  
Plot File: \\-LOCAL-\\03\_08\_MERIT\0001 QUAD\_ML\_BSAT\ACRT\_2INCH\ACRT\_2\_main

## 2 INCH MAIN LOG



COMPANY	MERIT ENERGY COMPANY, LLC		
WELL	McWILLIAMS E-11		
FIELD	COWGILL		
COUNTY	FINNEY	STATE	KANSAS
<b>HALLIBURTON</b>		ARRAY COMPENSATED TRUE RESISTIVITY LOG 2 INCH	