

SONIC
LOG



Company EDISON OPERATING COMPANY, LLC.
Well DORAN #2-16
Field DILLWYN
County STAFFORD State KANSAS

Location: API #: 15-185-24102-0000
1661' FSL & 2310' FEL
N/2 - SW - NW - SE
Permanent Datum GROUND LEVEL Elevation 1973
Log Measured From KELLY BUSHING 10' A.G.L.
Drilling Measured From KELLY BUSHING
Other Services
CDL/CNL/PE
DIL/MEI
Elevation
K.B. 1983
D.F. 1981
G.L. 1973

Company	EDISON OPERATING CO., LLC.
Well	DORAN #2-16
Field	DILLWYN
County	STAFFORD
State	KANSAS
Date	3/6/22
Run Number	TWO
Depth Driller	4405
Depth Logger	4402
Bottom Logged Interval	4394
Top Log Interval	300
Casing Driller	8 5/8"@369'
Casing Logger	369
Bit Size	7 7/8"
Type Fluid in Hole	CHEMICAL MUD
Density / Viscosity	9.0/68
pH / Fluid Loss	10.0/10.0
Source of Sample	FLOWLINE
Rm @ Meas. Temp	.500@70F
Rmf @ Meas. Temp	.375@70F
Rmc @ Meas. Temp	.600@70F
Source of Rmf / Rmc	MEASUREMENT
Rm @ BHT	.292@120F
Time Circulation Stopped	4.5 HOURS
Time Logger on Bottom	9:00 P.M.
Maximum Recorded Temperature	120F
Equipment Number	922339
Location	HAYS, KANSAS
Recorded By	JEFF LUEBBERS
Witnessed By	ADAM KENNEDY

<<< Fold Here >>>

All interpretations are opinions based on inferences from electrical or other measurements and we cannot and do not guarantee the accuracy or correctness of any interpretation, and we shall not, except in the case of gross or willful negligence on our part, be liable or responsible for any loss, costs, damages, or expenses incurred or sustained by anyone resulting from any interpretation made by any of our officers, agents or employees. These interpretations are also subject to our general terms and conditions set out in our current Price Schedule.

15-185-24102-0000 Comments

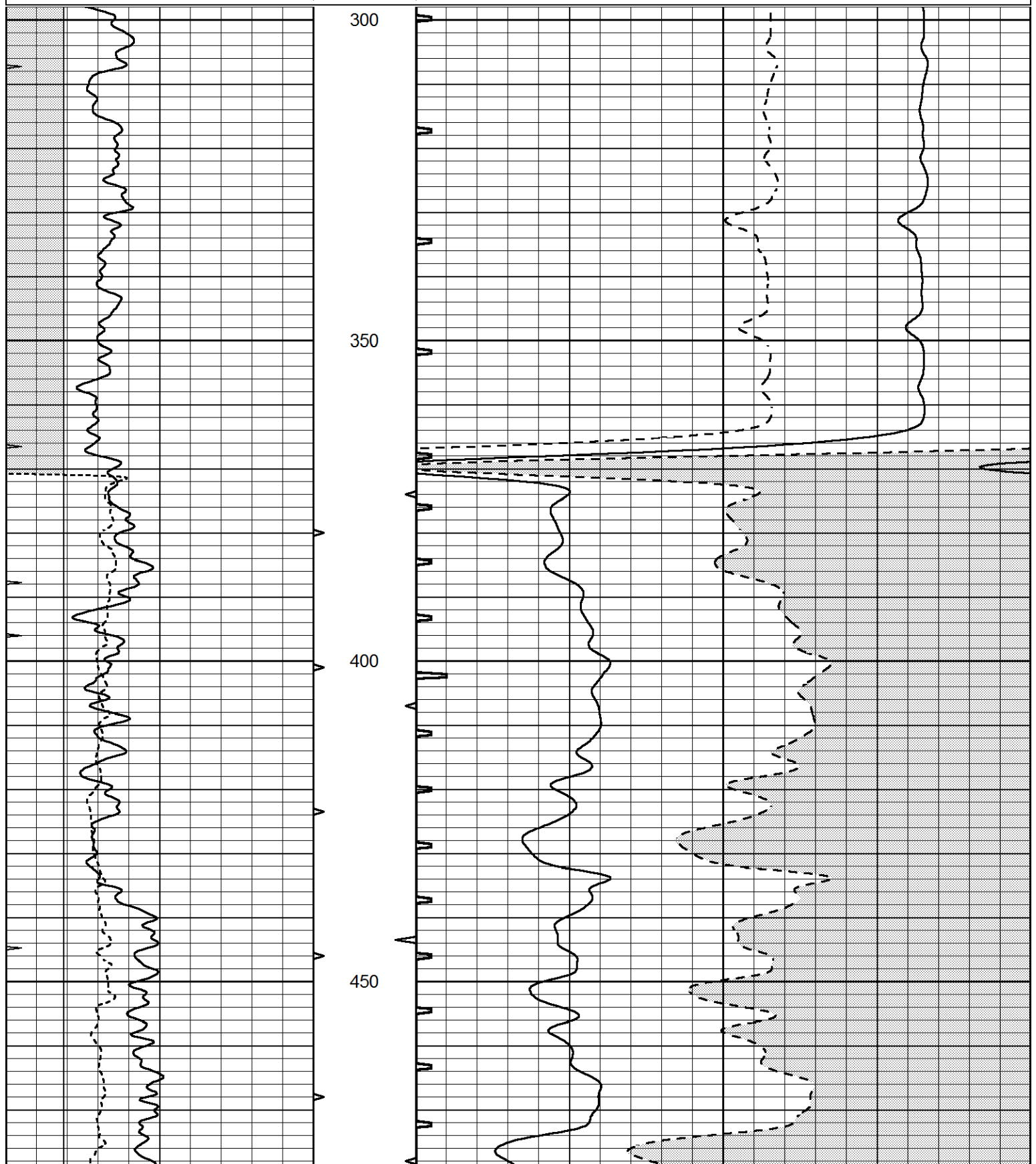
THANK YOU FOR USING ELI WIRELINE HAYS, KANSAS (785) 628-6395
DIRECTIONS
ST. JOHN, KS. S. TO (HWY 50 & 281 JUNCTION) 6W. ON HWY 50, 1/2N., W. INTO

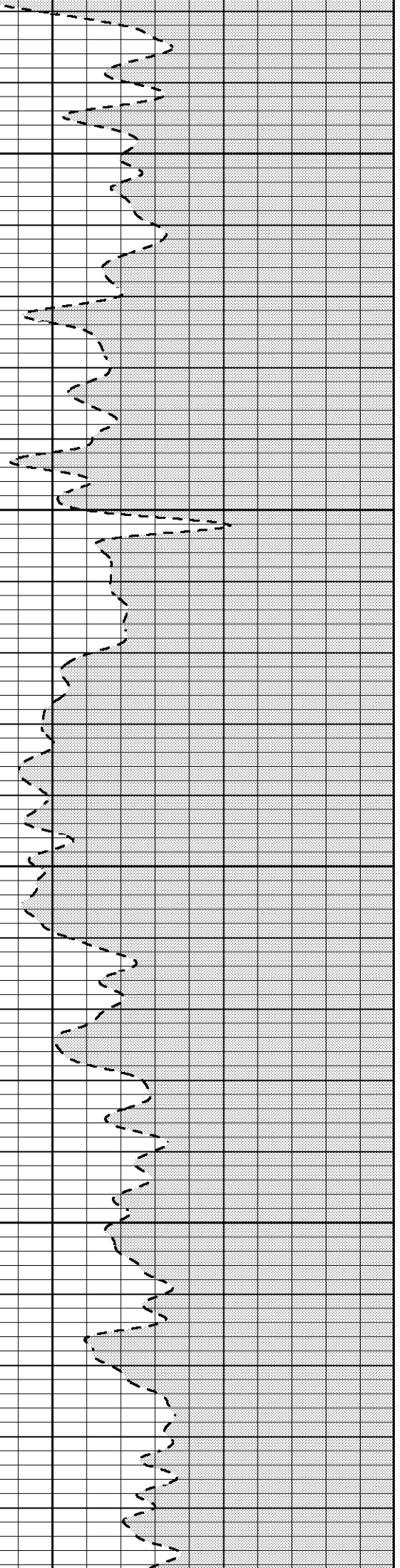
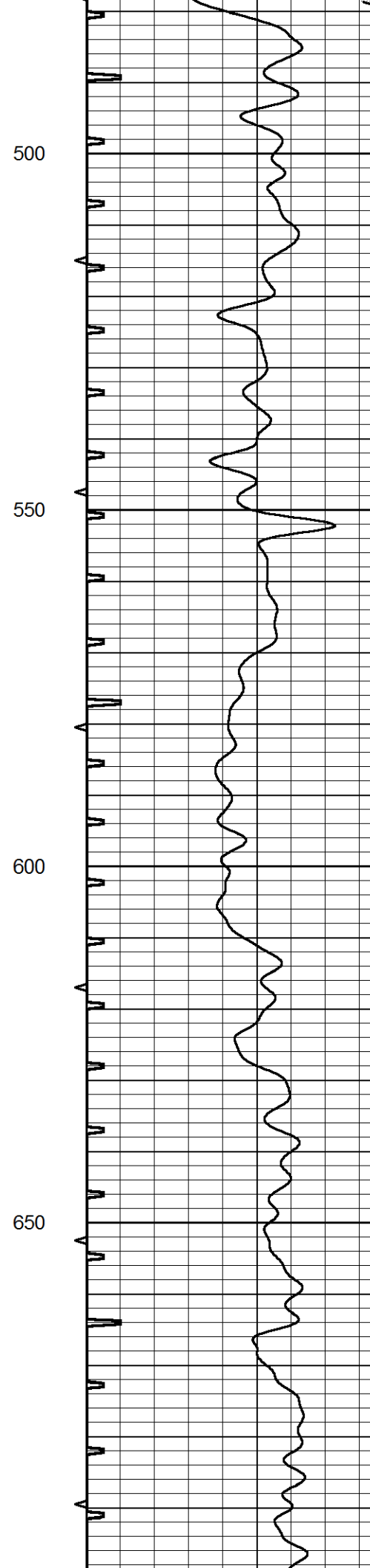
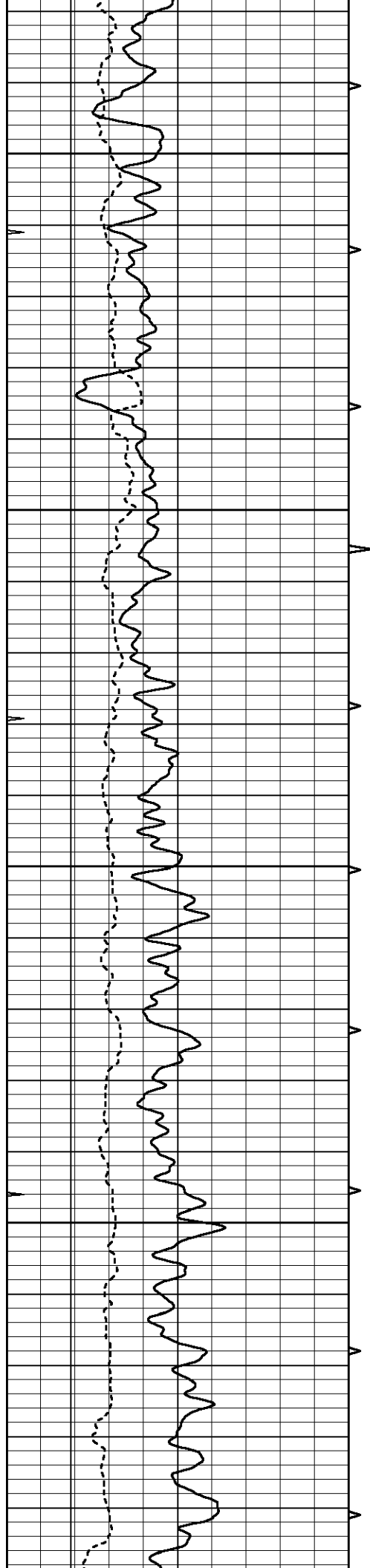


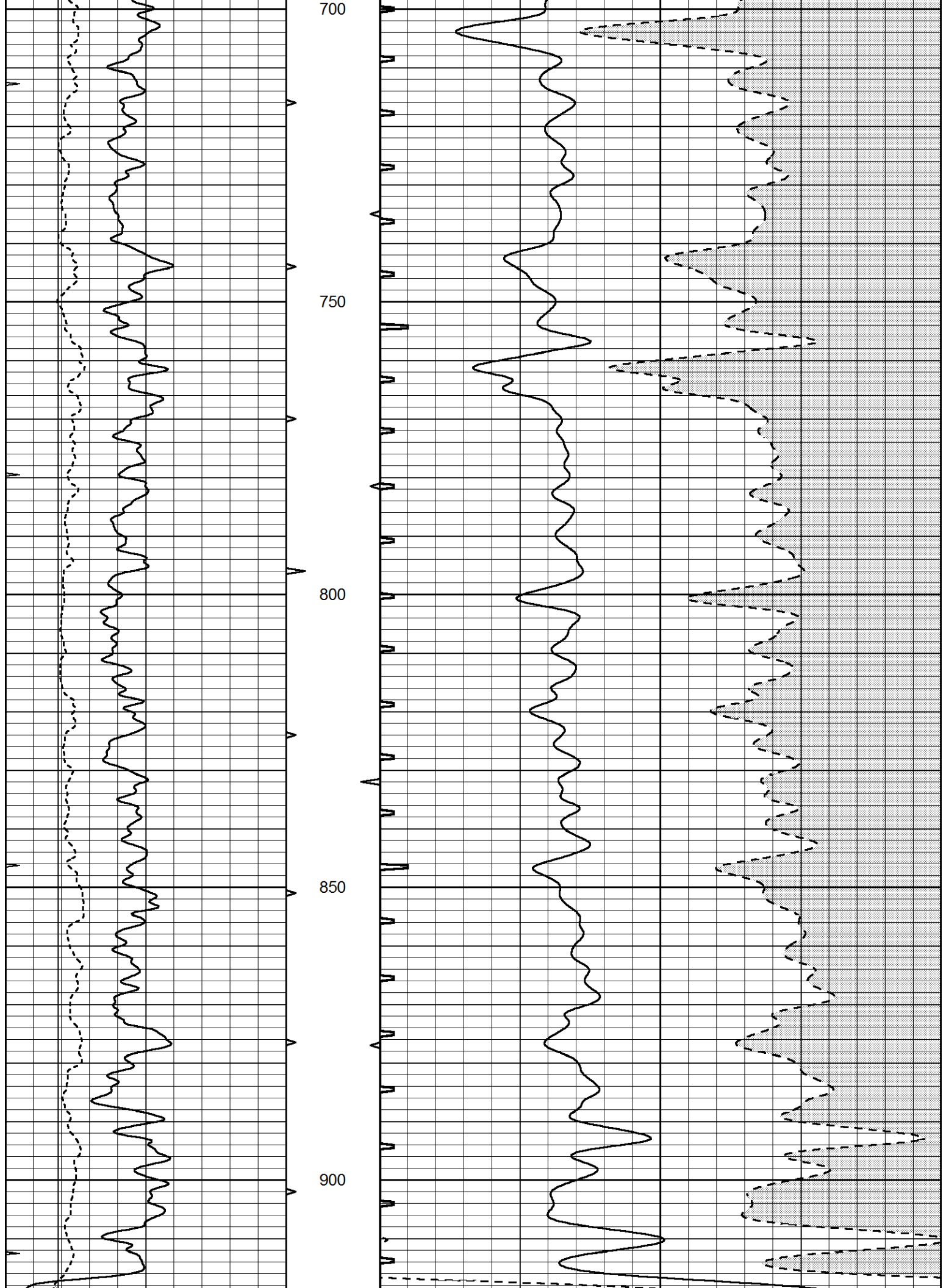
MAIN SECTION

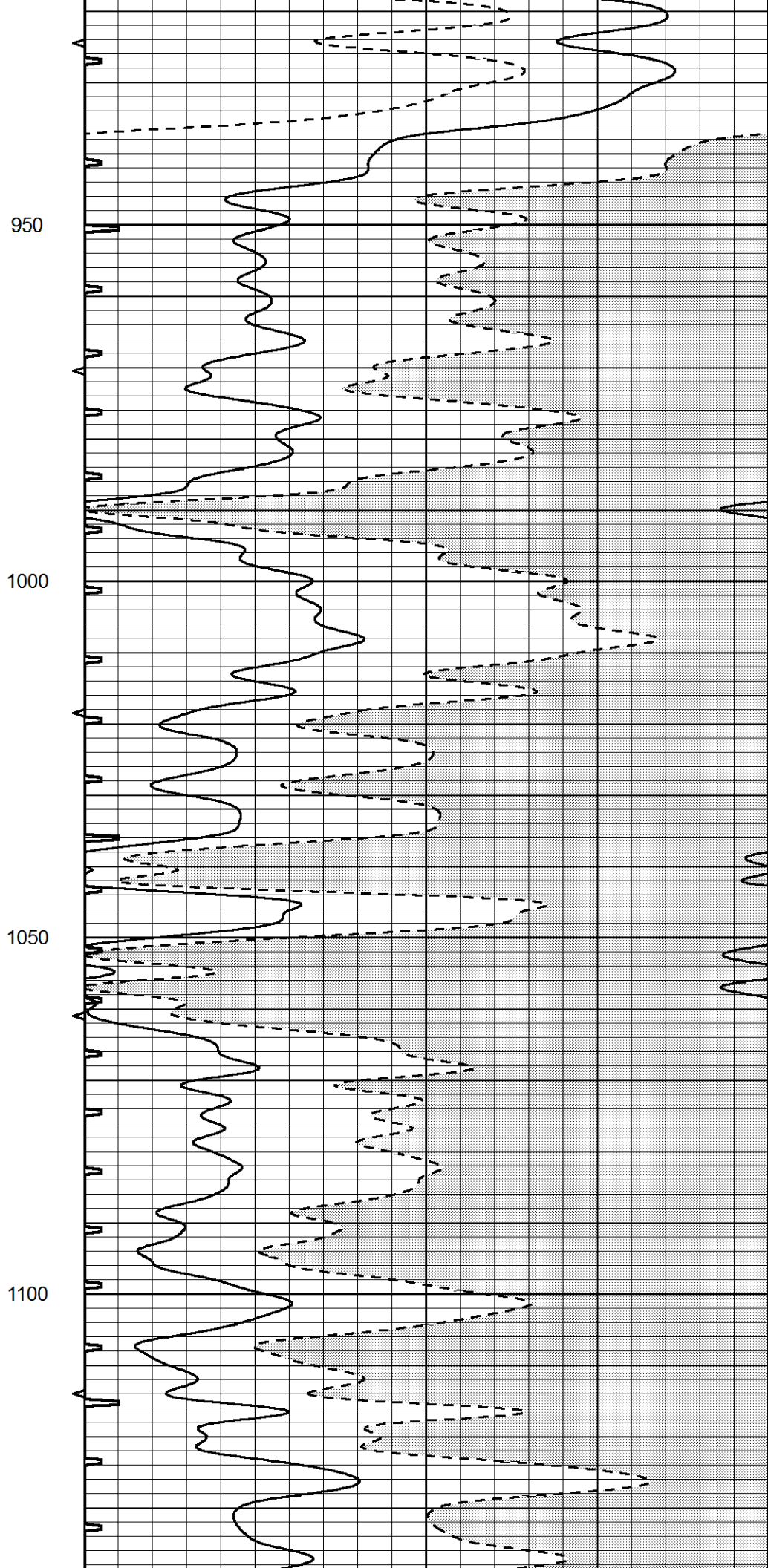
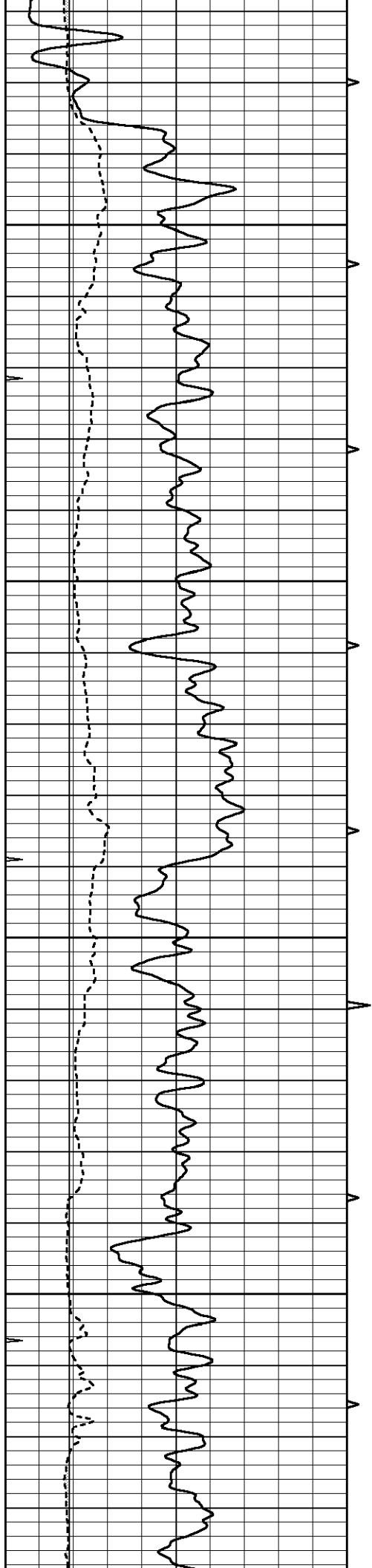
Database File 6257pe.db
 Dataset Pathname pass6.5
 Presentation Format slt
 Dataset Creation Sun Mar 06 22:25:24 2022
 Charted by Depth in Feet scaled 1:240

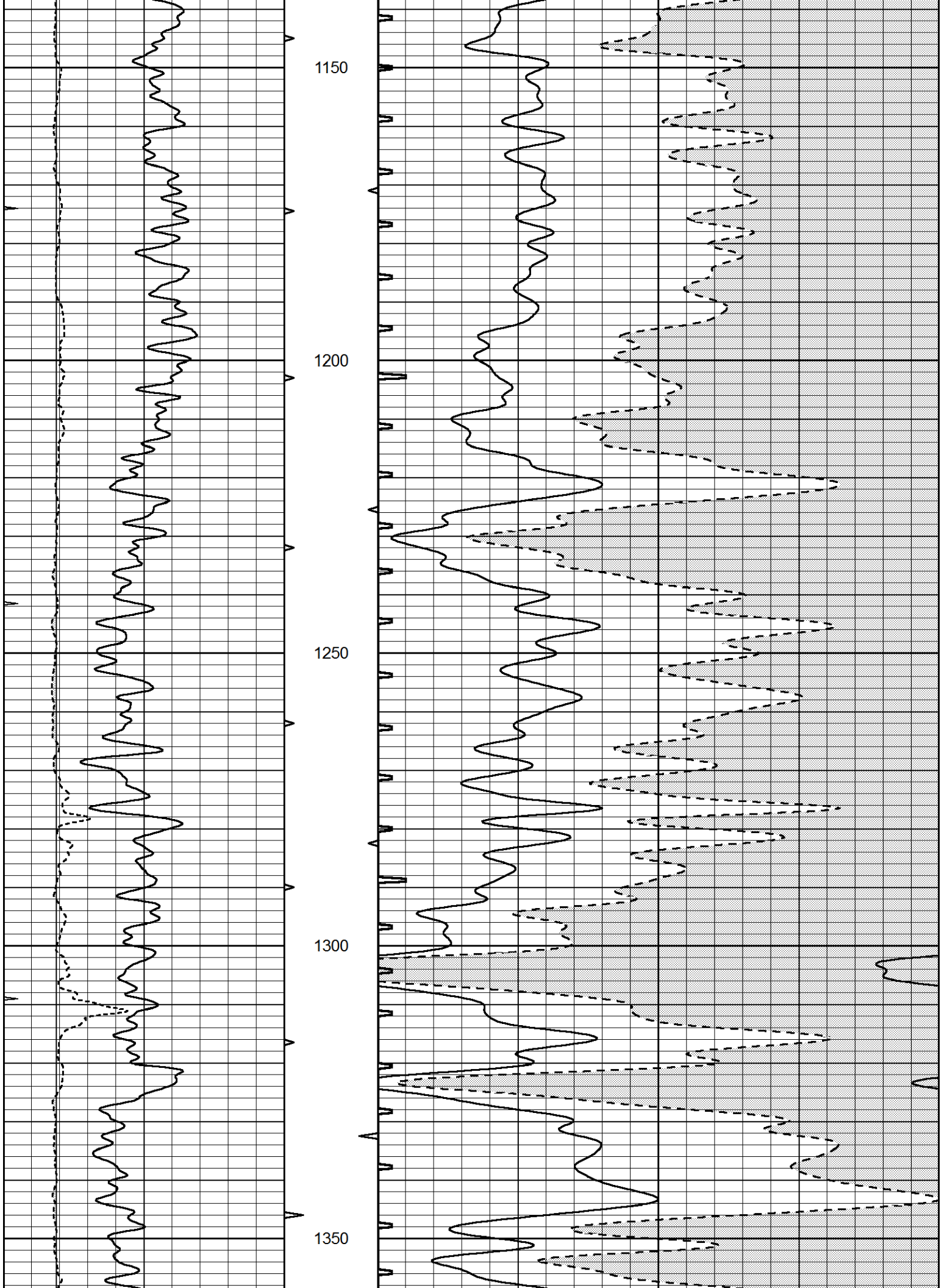
0	GAMMA RAY (GAPI)	150	ABHV	140	DELTA TIME (usec/ft)	40	
6	CALIPER (in)	16	10 (ft3)	0	30	SONIC POROSITY (pu)	-10
0	MINMK	20	TBHV	0	ITT (msec)	20	
			0 (ft3)	10			

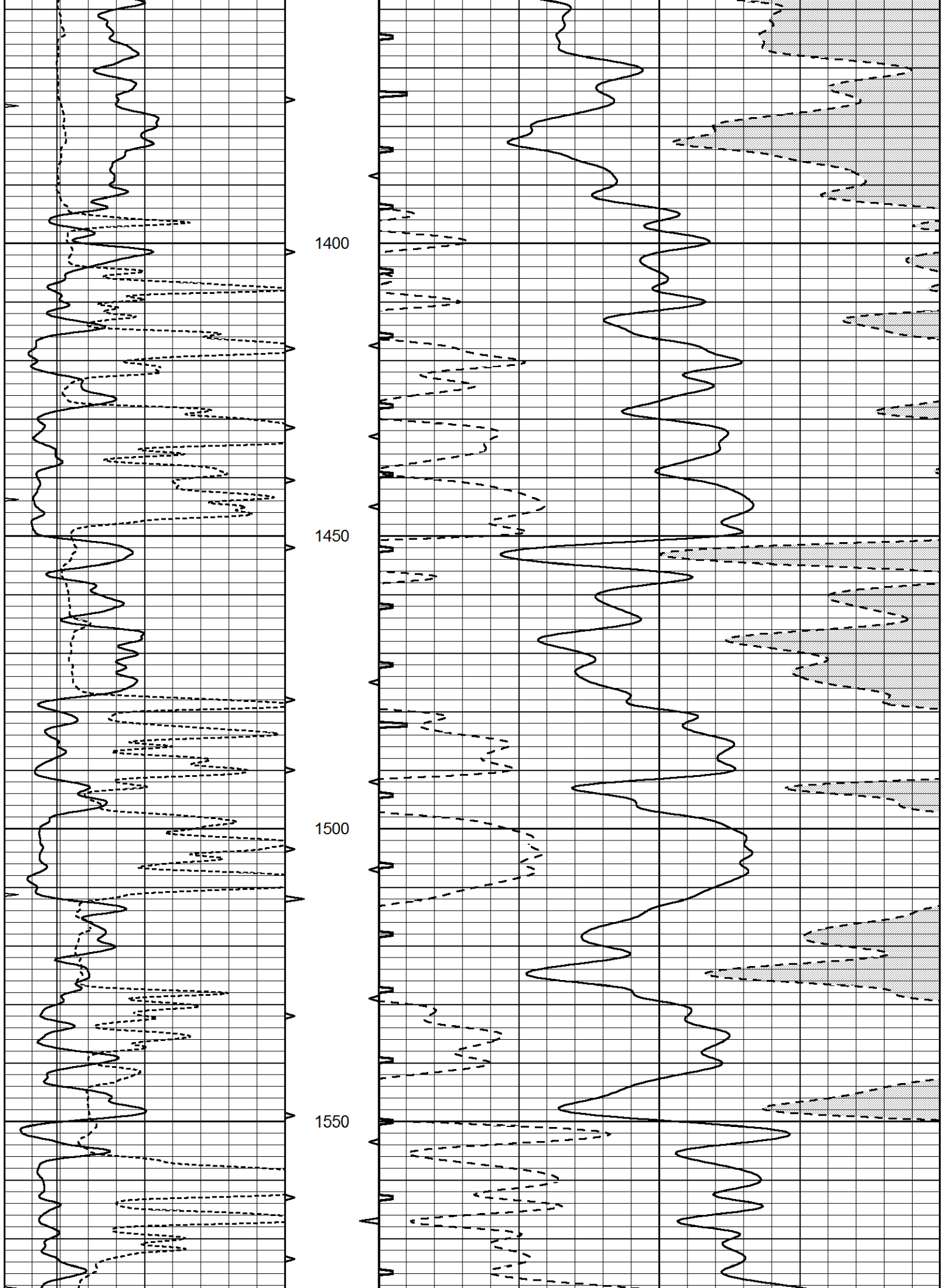


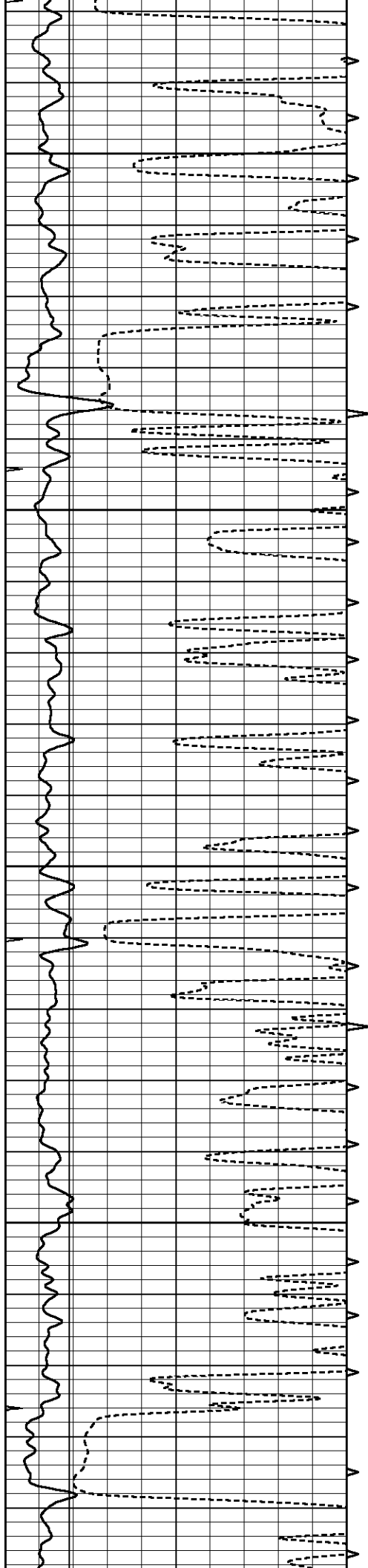










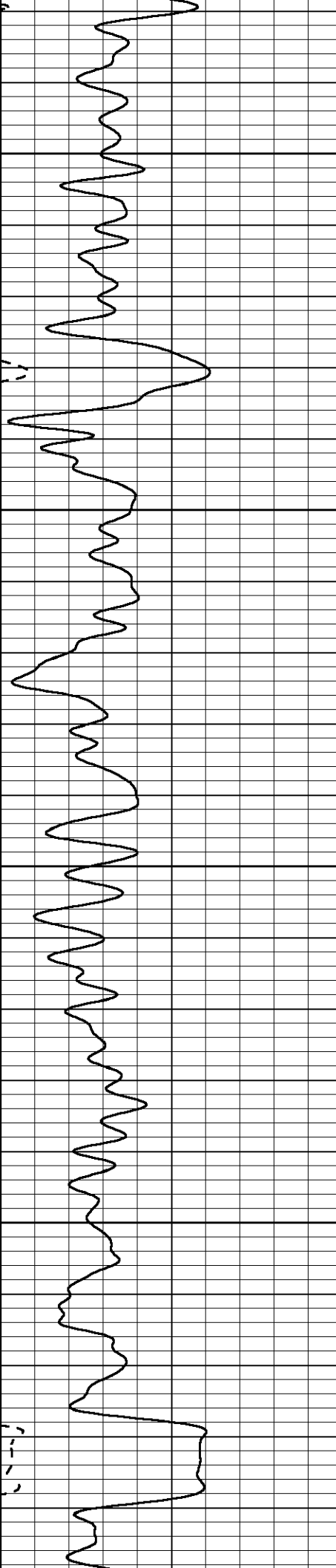
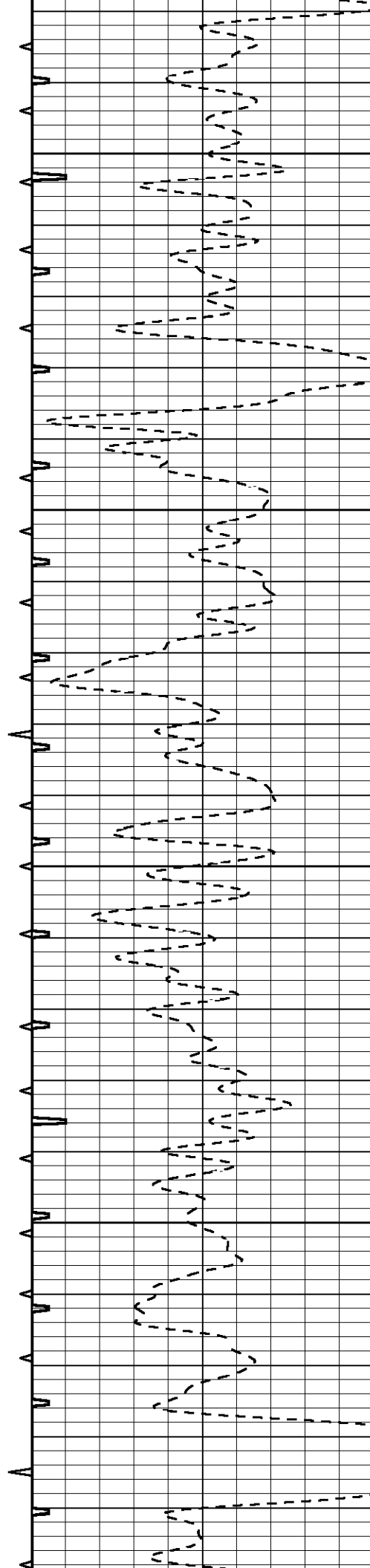


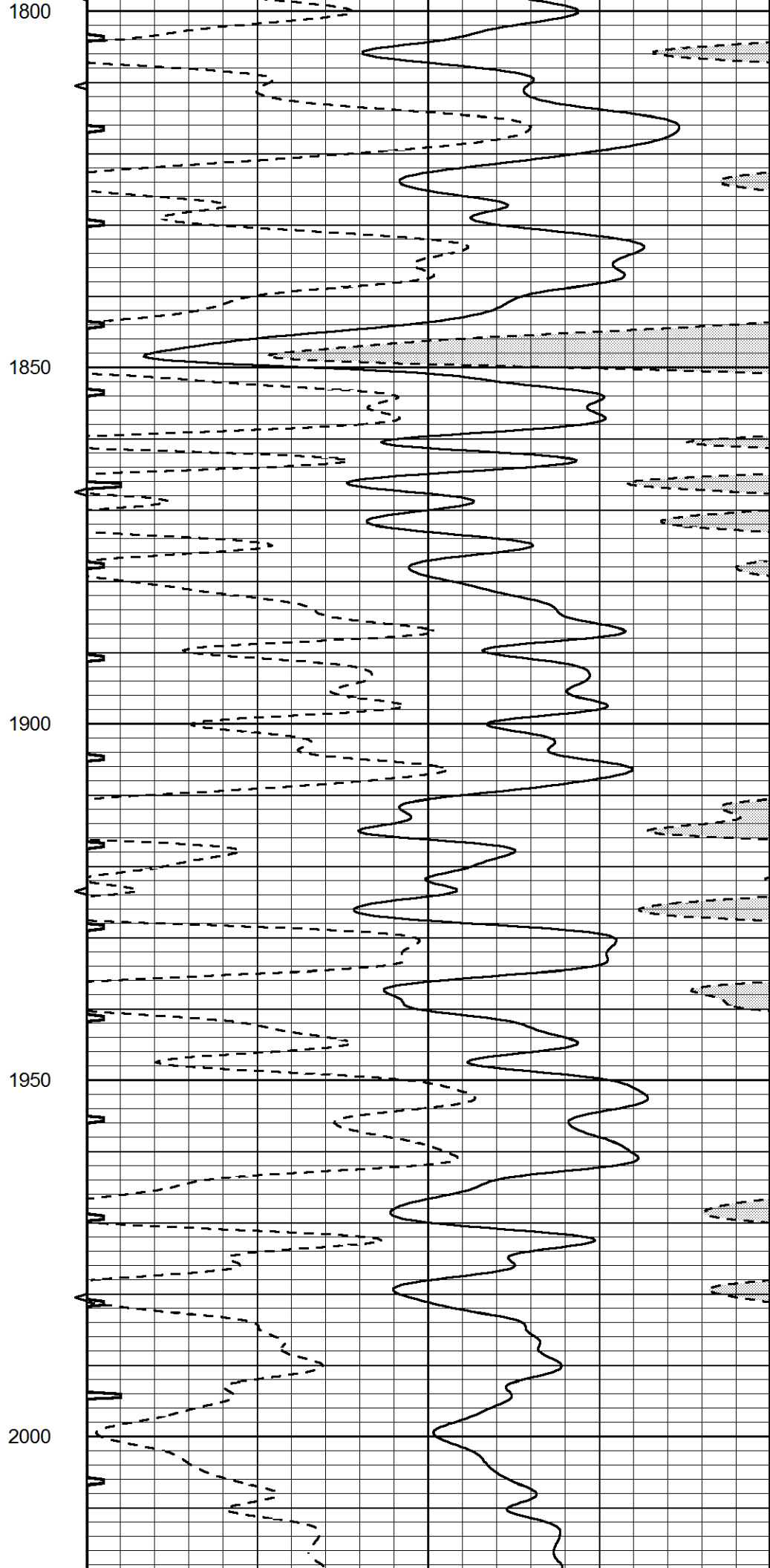
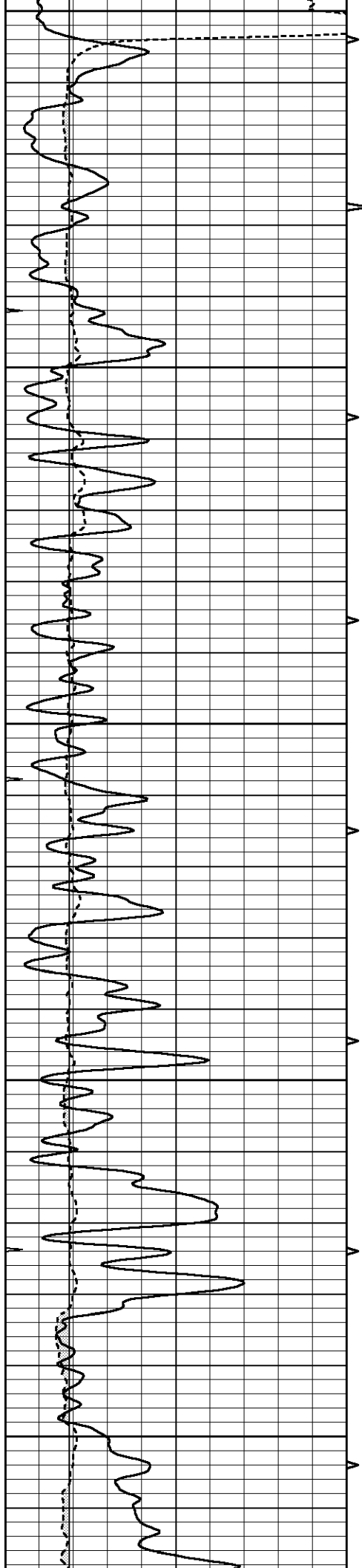
1600

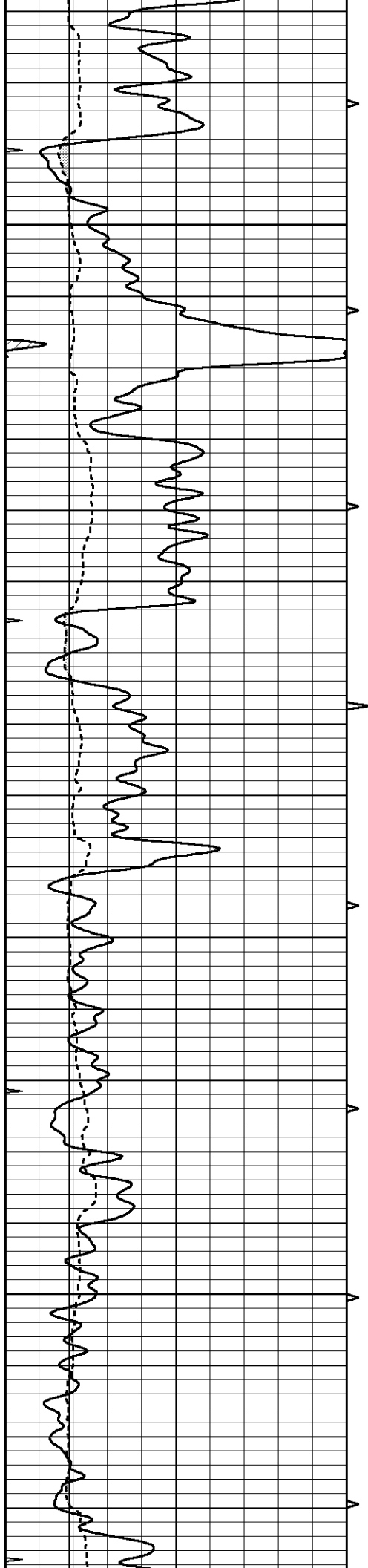
1650

1700

1750





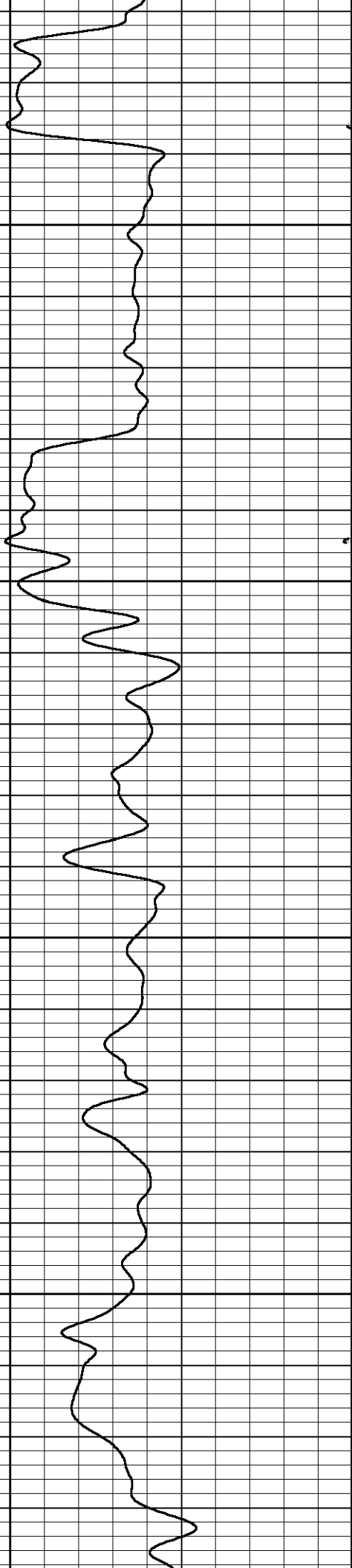
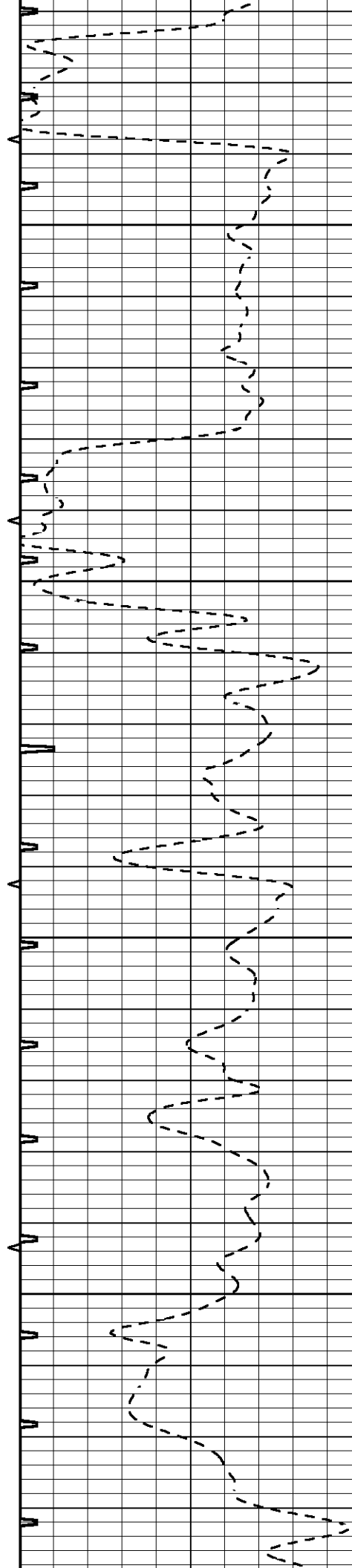


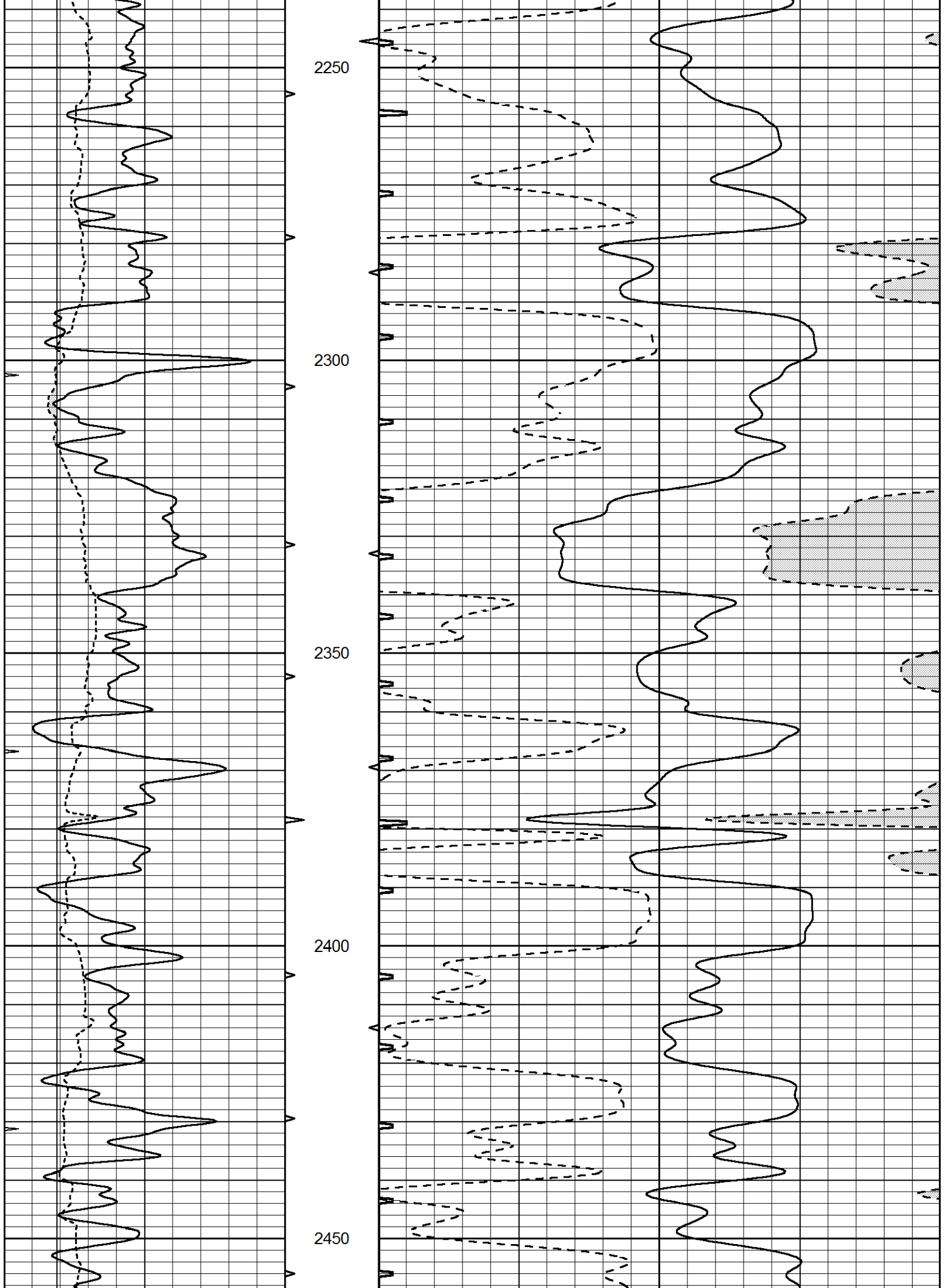
2050

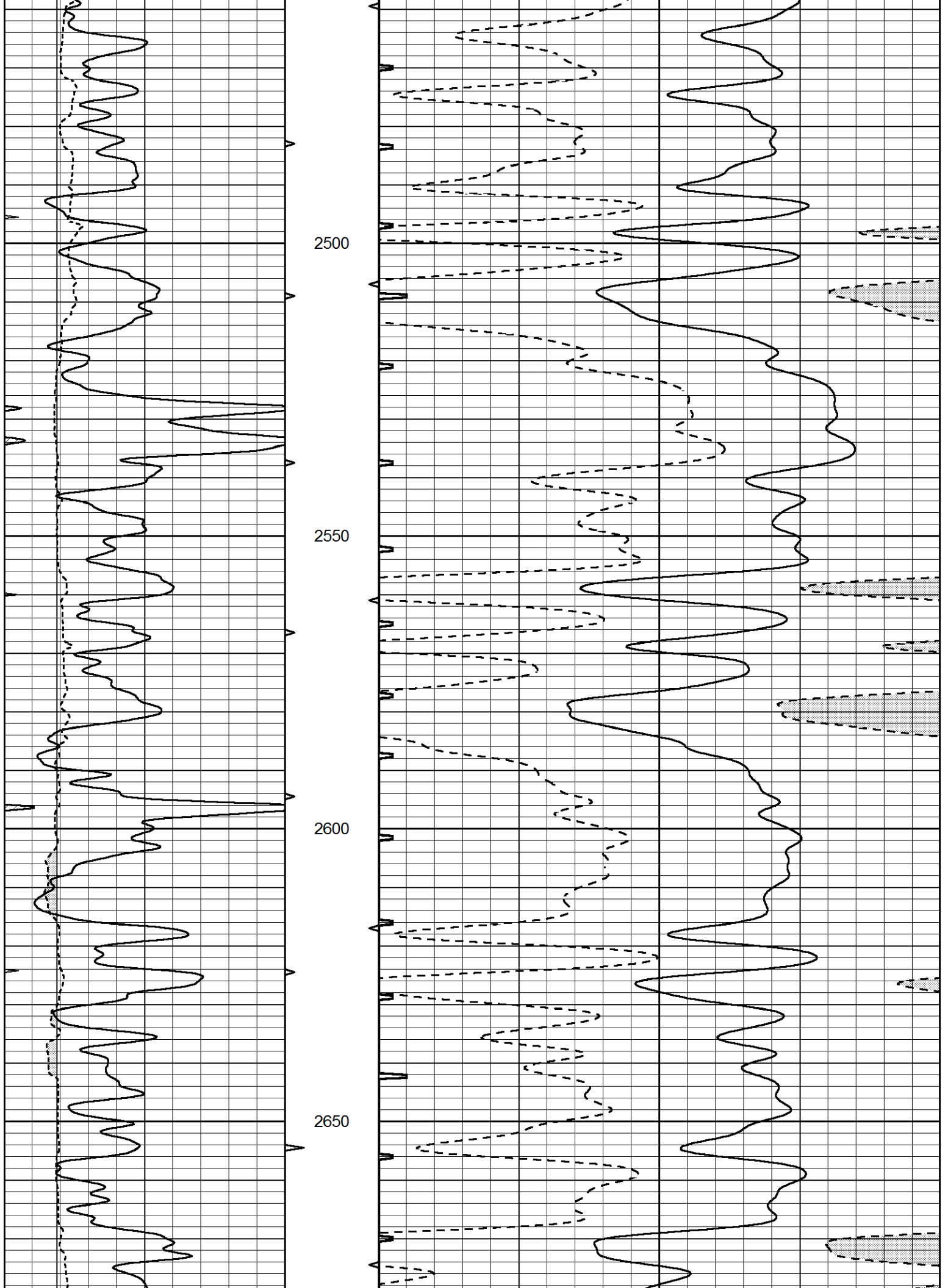
2100

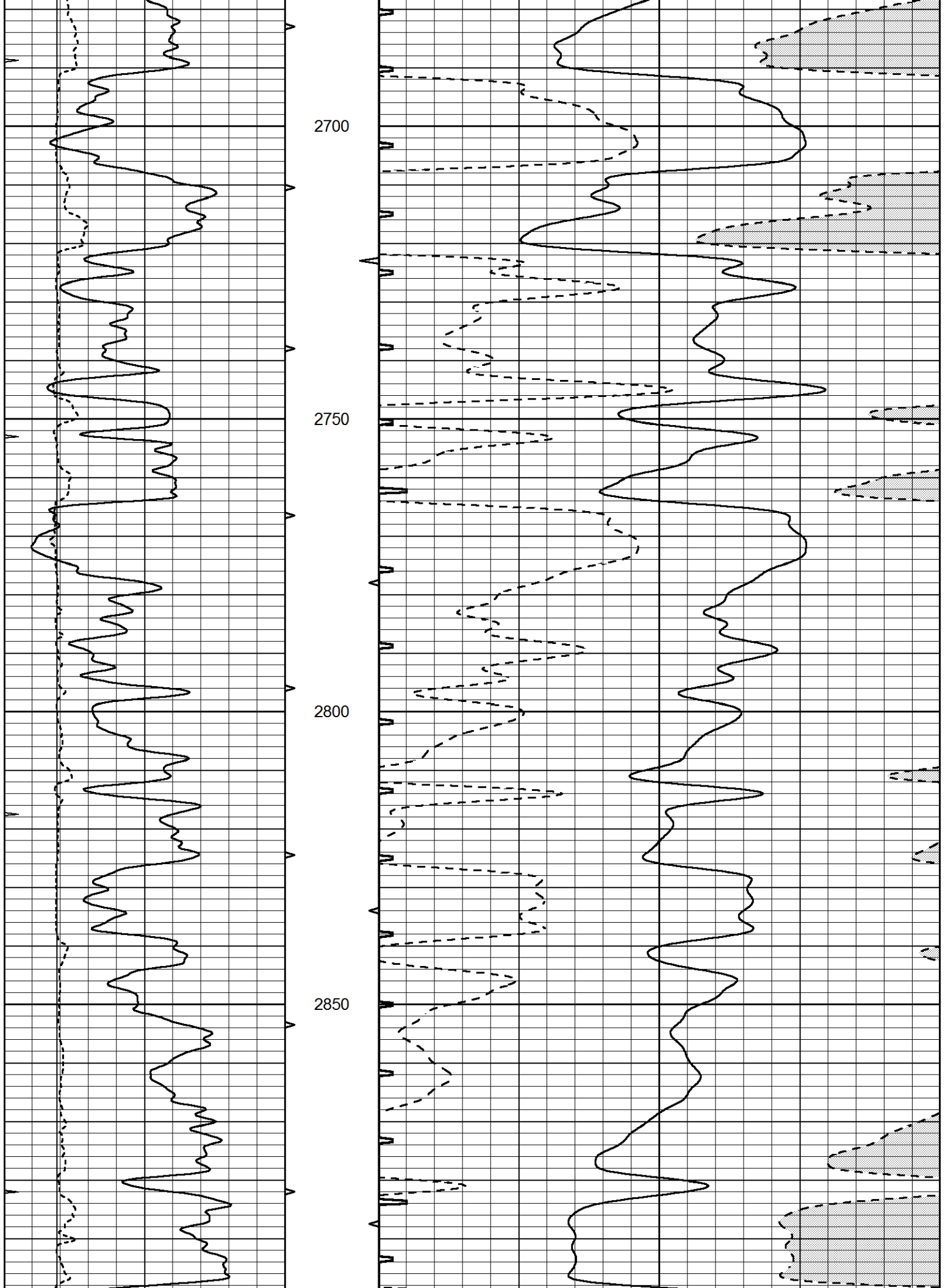
2150

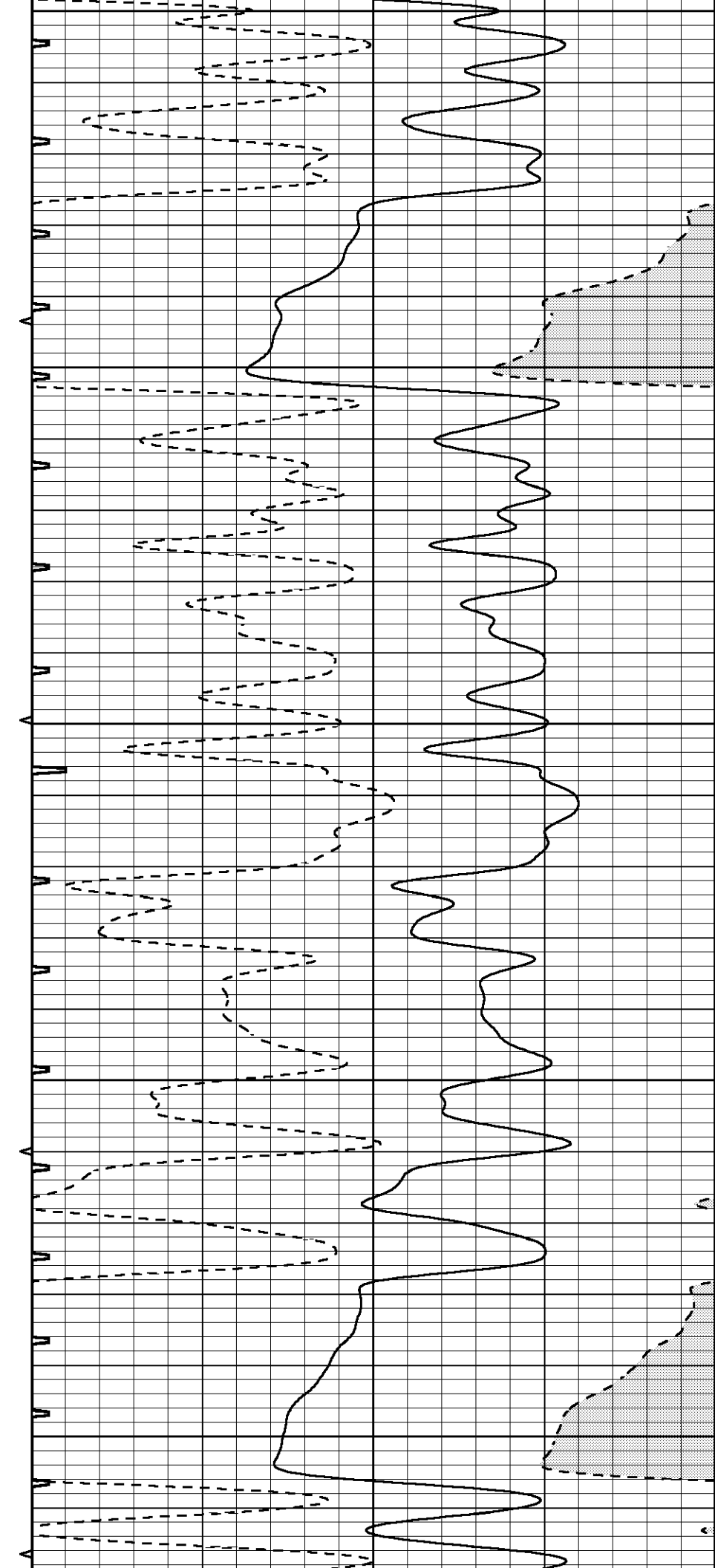
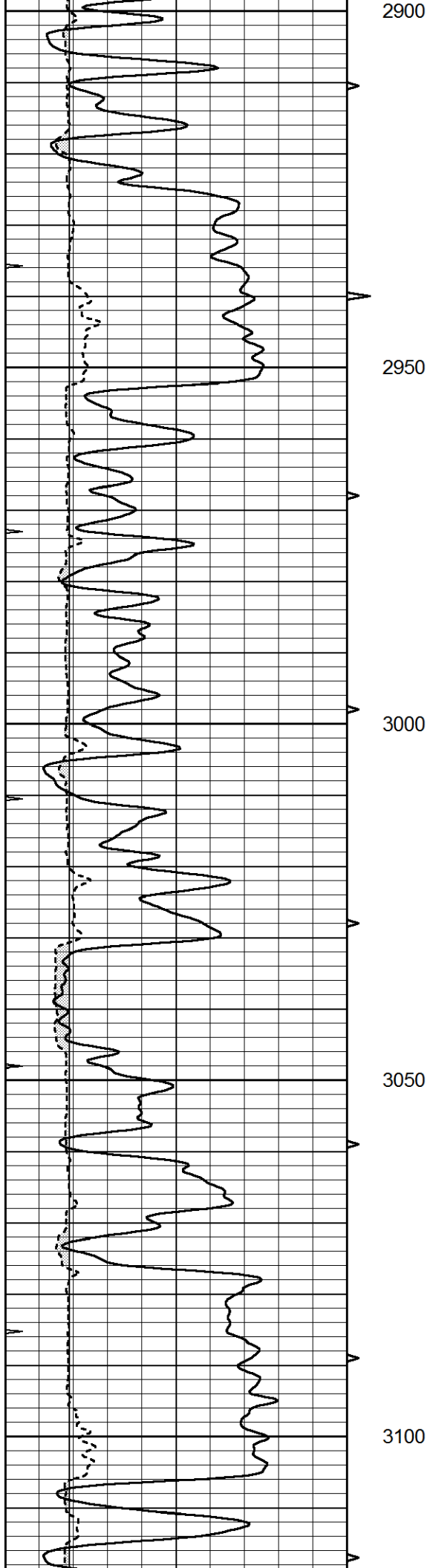
2200

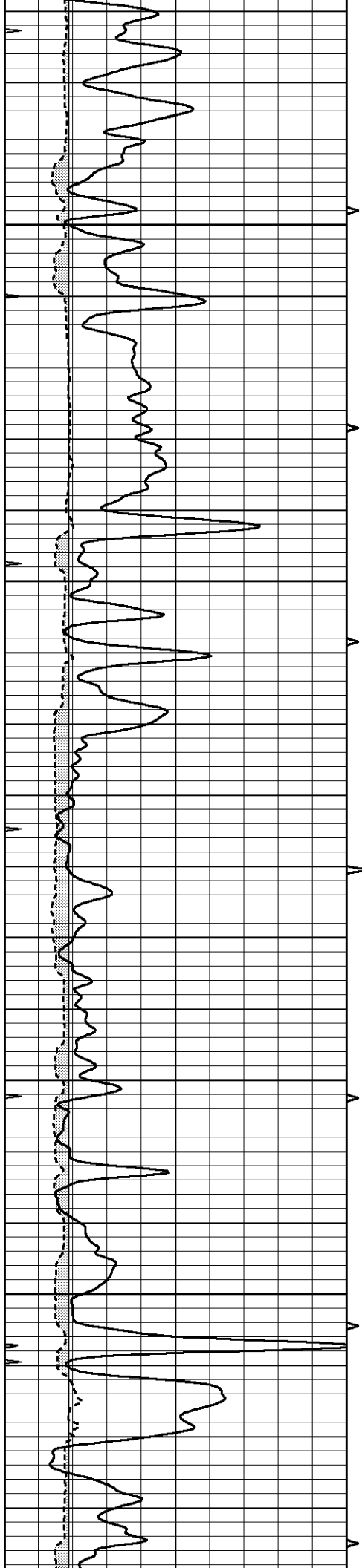










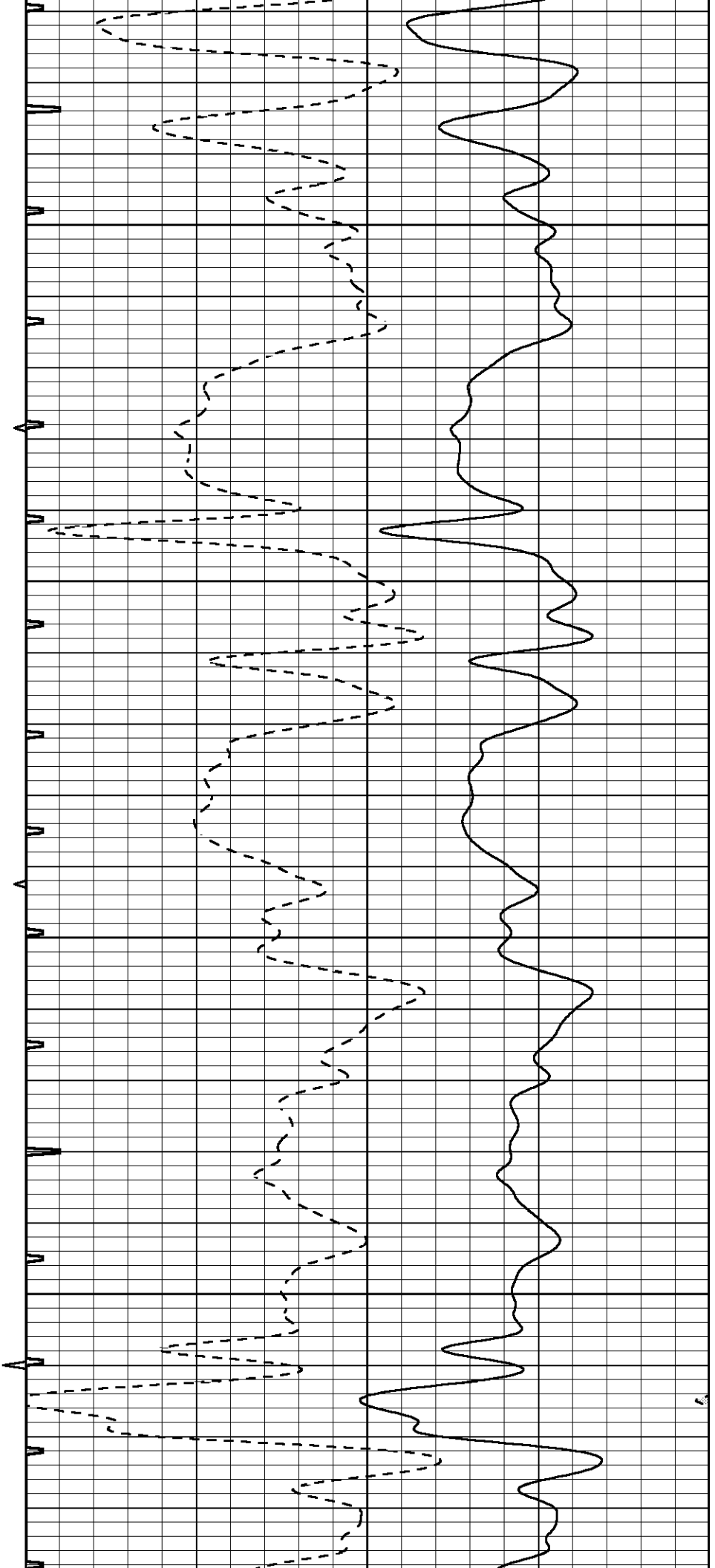


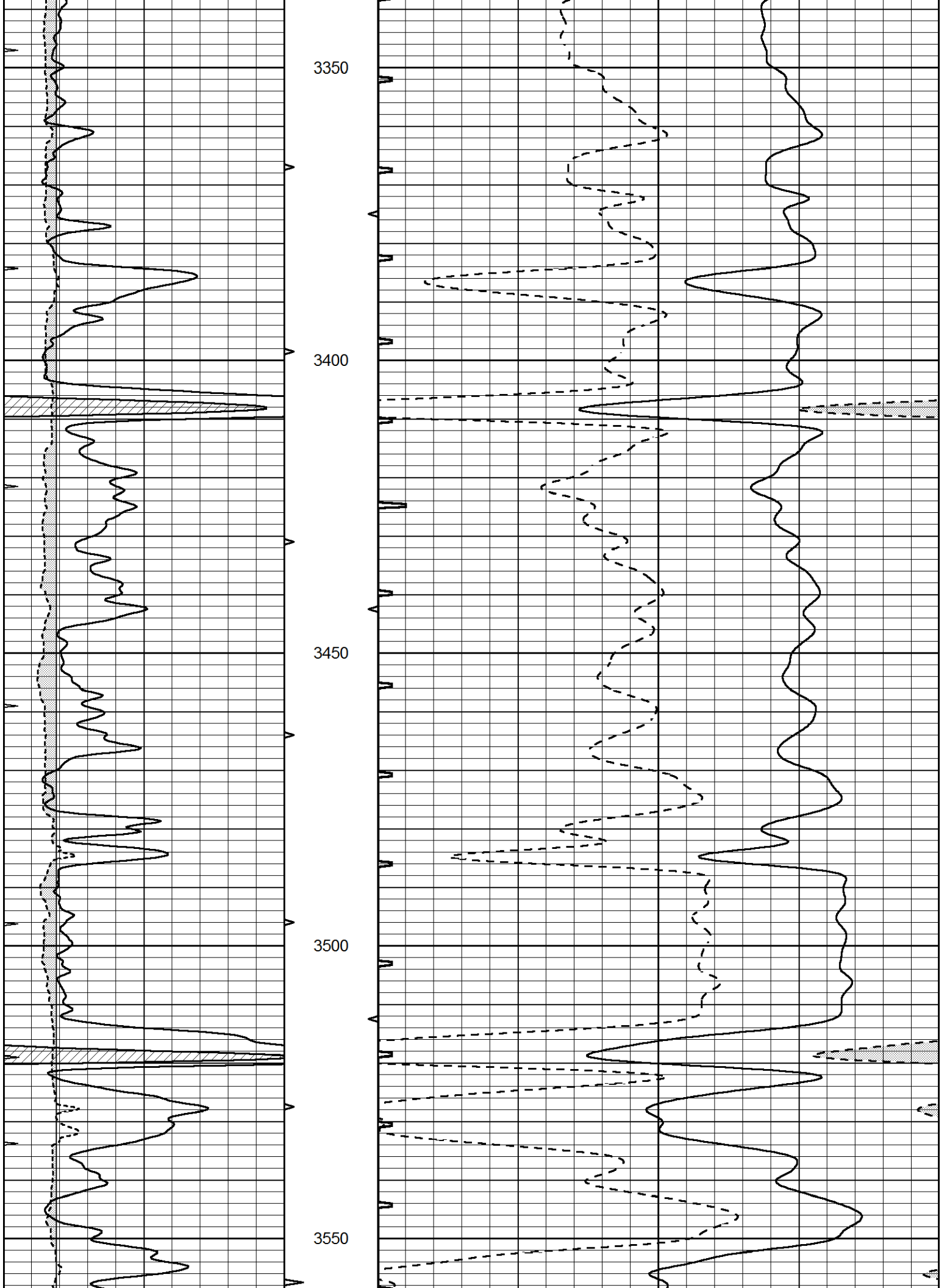
3150

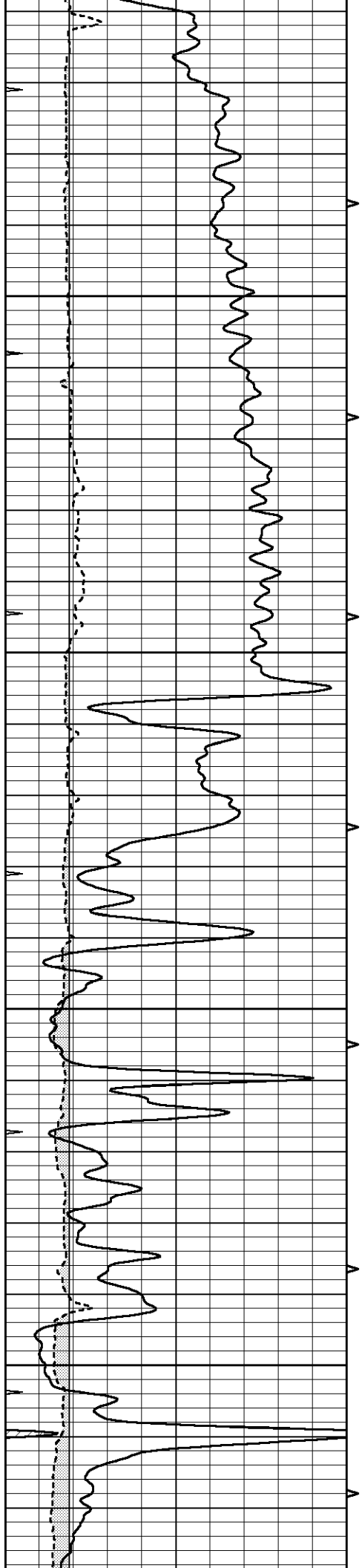
3200

3250

3300





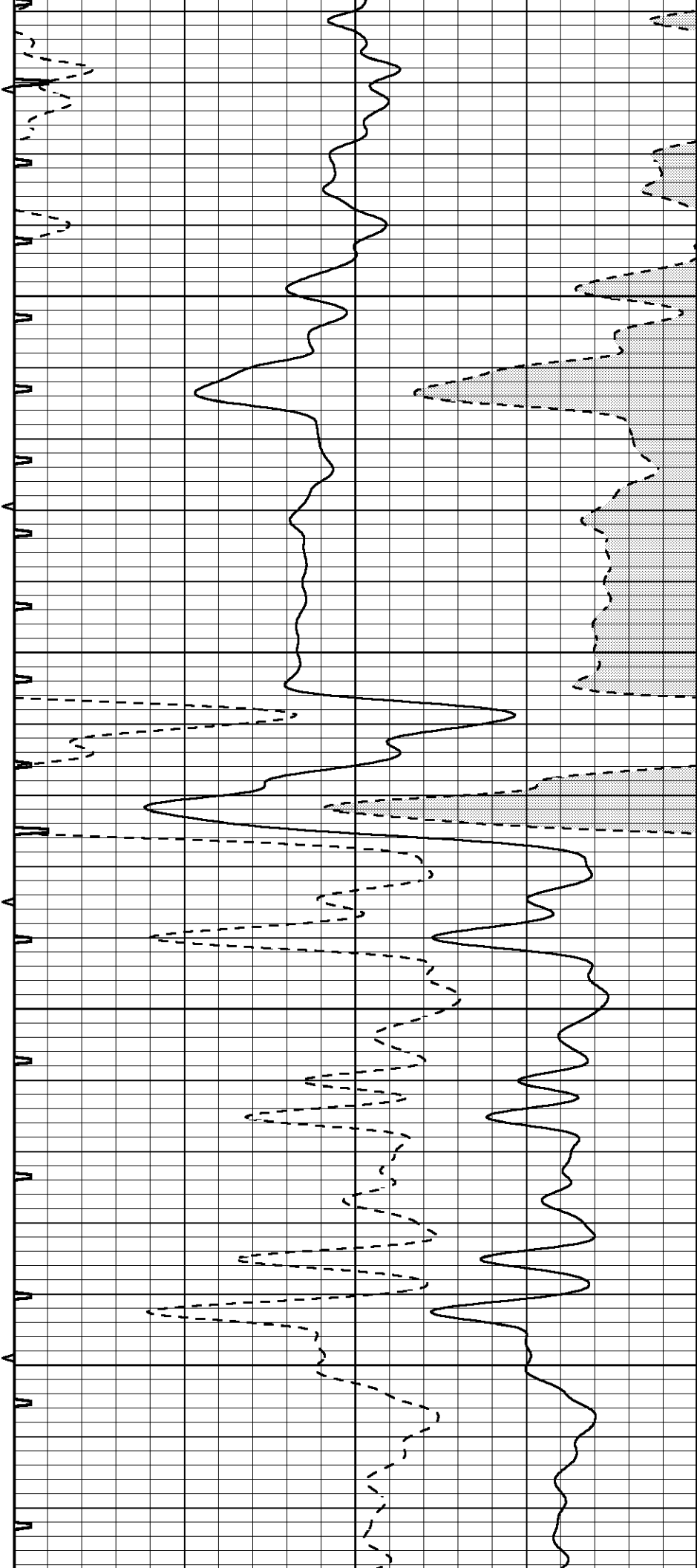


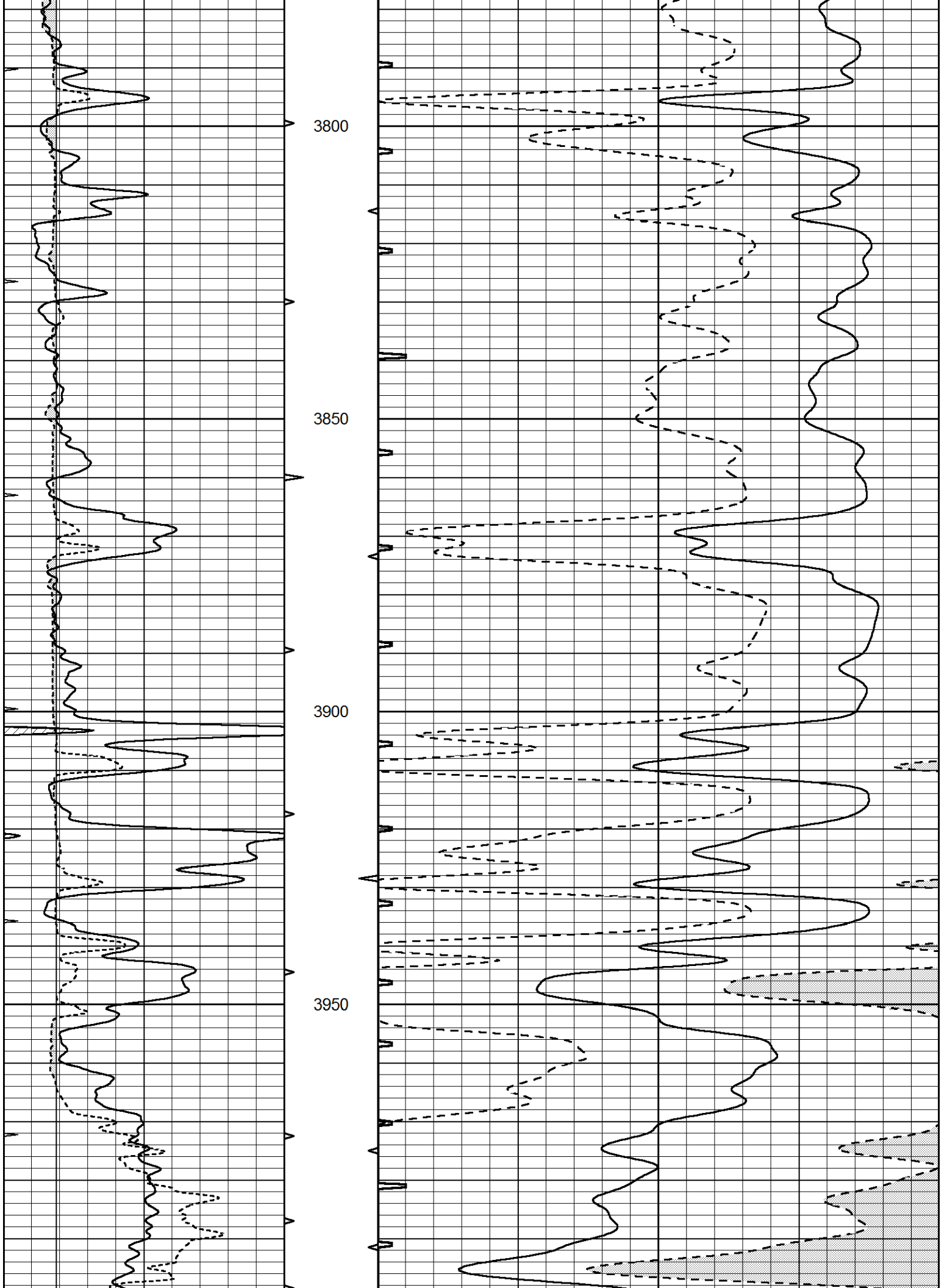
3600

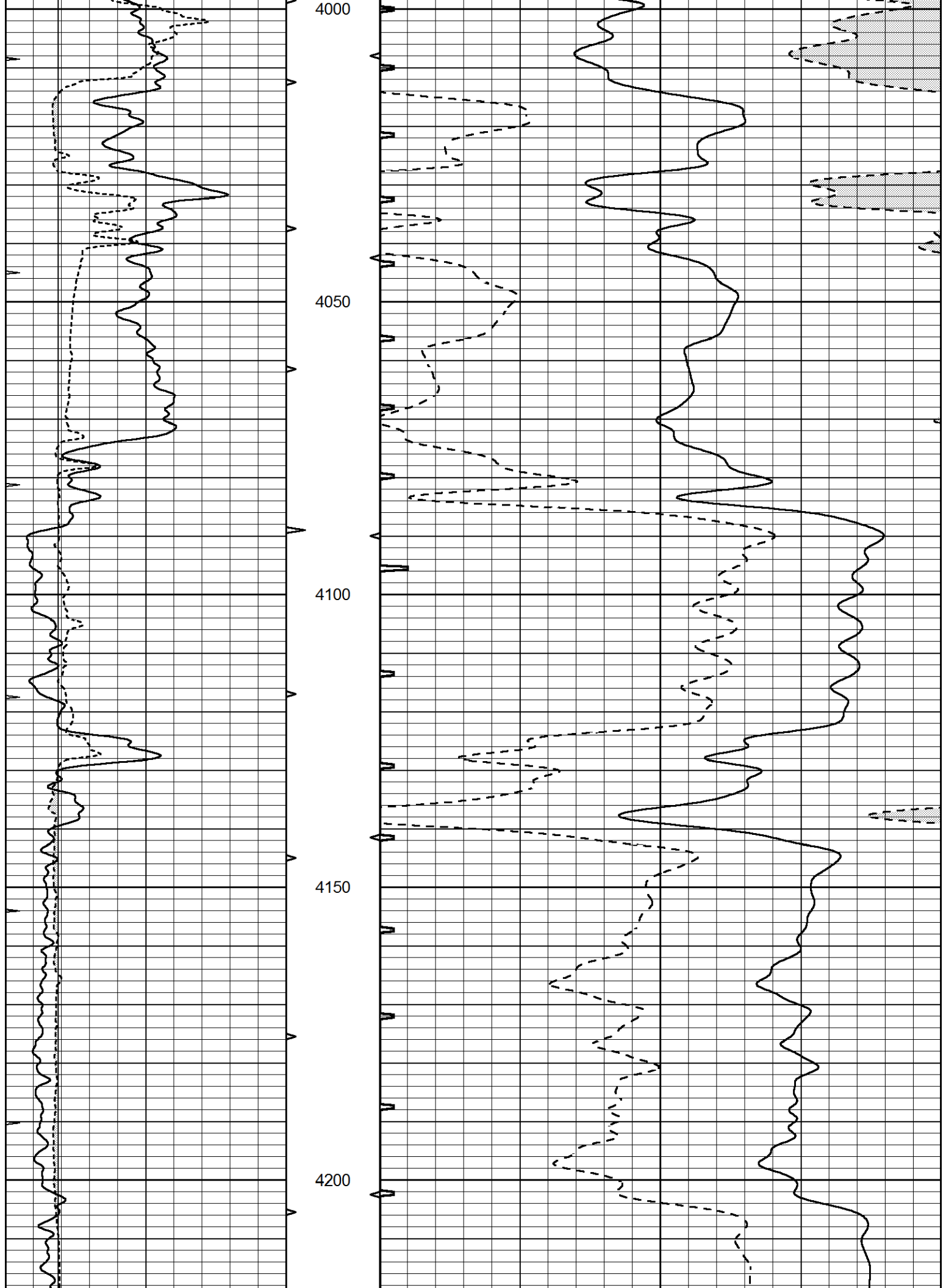
3650

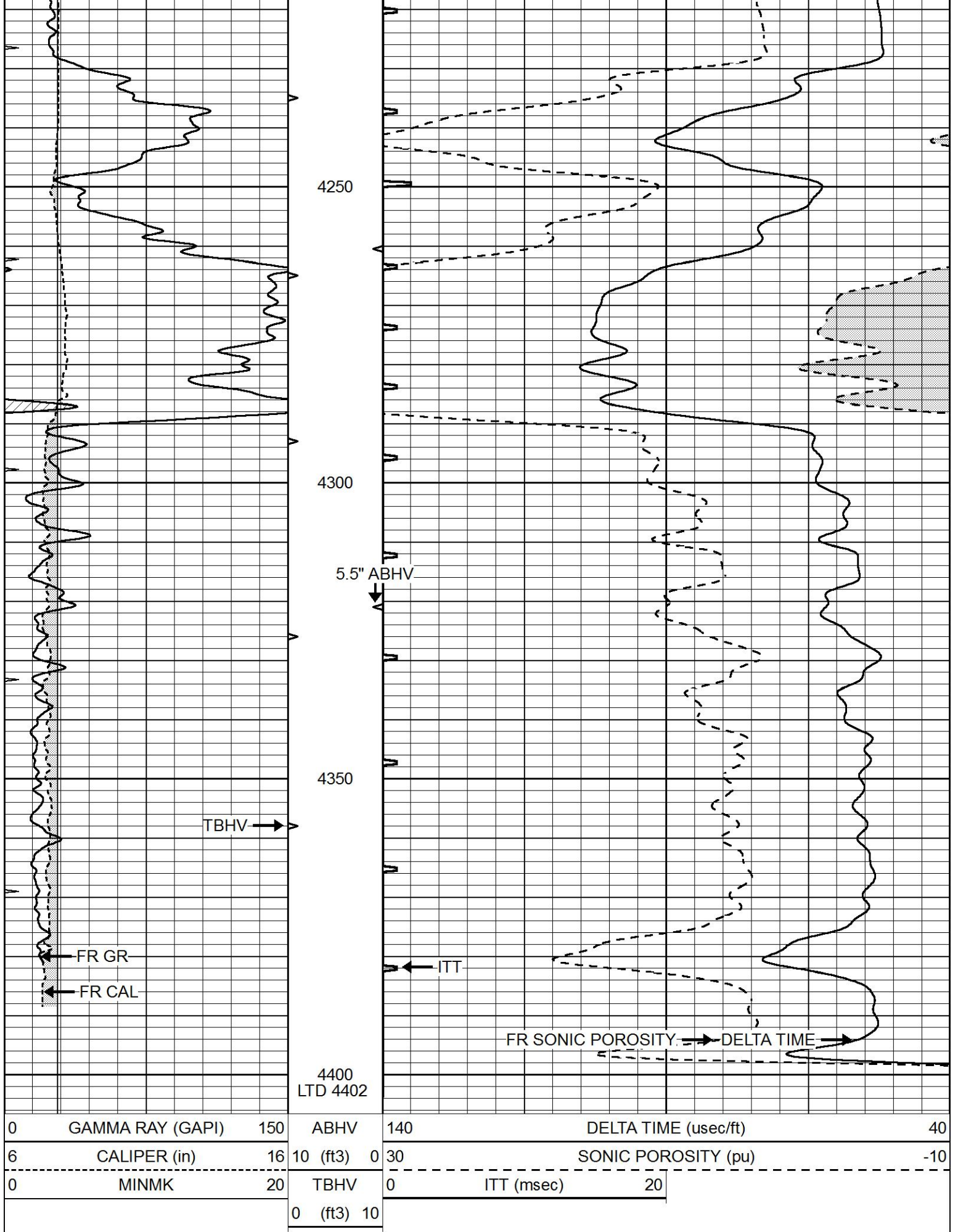
3700

3750







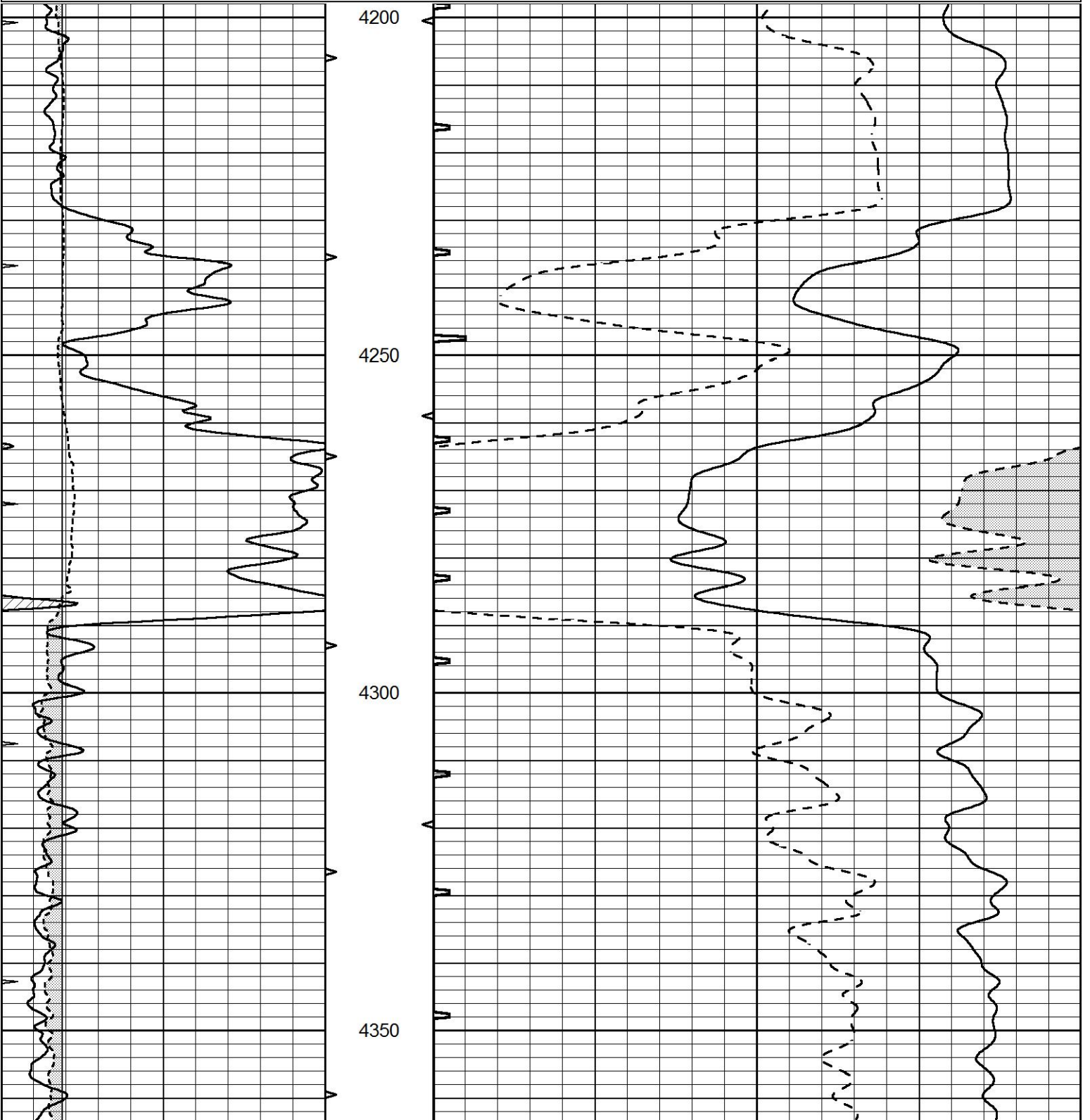


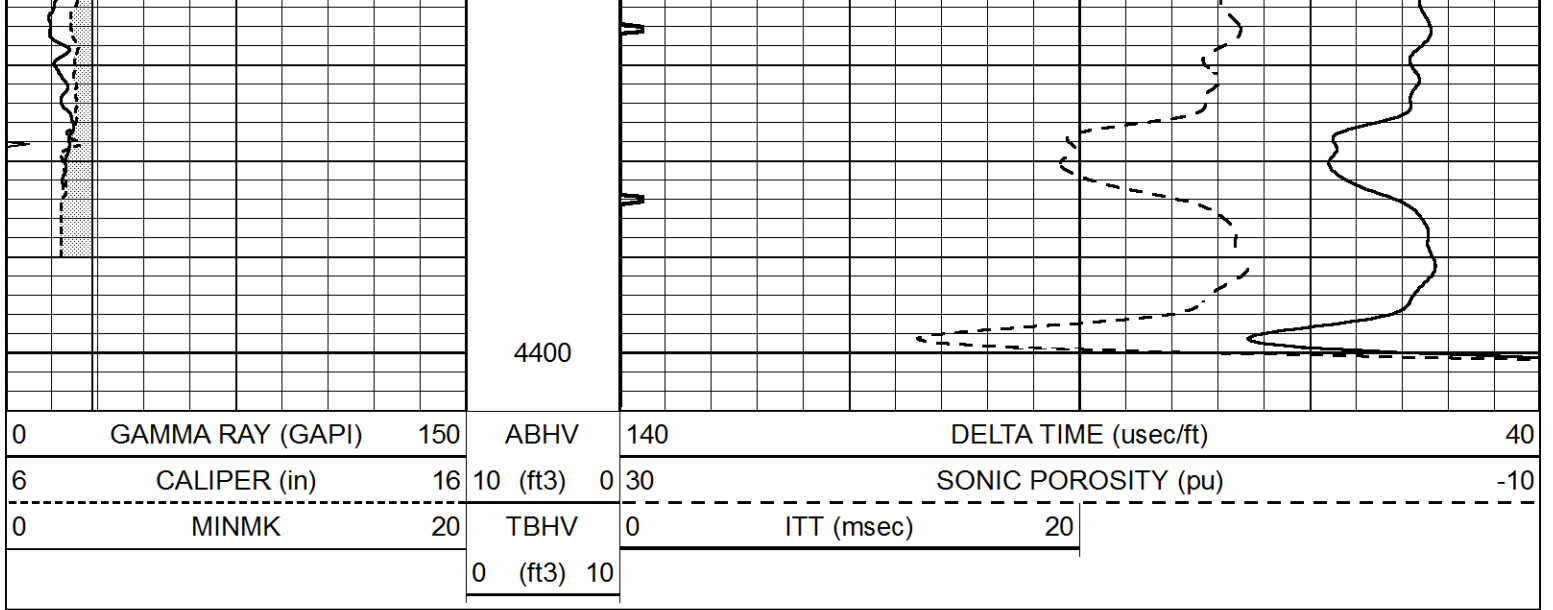
REPEAT SECTION



Database File 6257pe.db
 Dataset Pathname pass5.2
 Presentation Format slt
 Dataset Creation Sun Mar 06 21:33:44 2022
 Charted by Depth in Feet scaled 1:240

0	GAMMA RAY (GAPI)	150	ABHV	140	DELTA TIME (usec/ft)	40	
6	CALIPER (in)	16	10 (ft3)	0	30	SONIC POROSITY (pu)	-10
0	MINMK	20	TBHV	0	ITT (msec)	20	
			0 (ft3)	10			





0	GAMMA RAY (GAPI)	150	ABHV	140	DELTA TIME (u-sec/ft)	40
6	CALIPER (in)	16	10 (ft3) 0	30	SONIC POROSITY (pu)	-10
0	MINMK	20	TBHV	0	ITT (msec)	20
			0 (ft3) 10			