

MICRO LOG



Company EDISON OPERATING COMPANY, LLC.
 Well DORAN #2-16
 Field DILLWYN
 County STAFFORD State KANSAS

Location: API #: 15-185-24102-0000
 1661' FSL & 2310' FEL
 N/2 - SW - NW - SE
 Permanent Datum GROUND LEVEL Elevation 1973
 Log Measured From KELLY BUSHING 10' A.G.L.
 Drilling Measured From KELLY BUSHING
 Other Services
 CDL/CNL/PE
 DIL/SONIC
 Elevation
 K.B. 1983
 D.F. 1981
 G.L. 1973

Company	EDISON OPERATING CO., LLC.
Well	DORAN #2-16
Field	DILLWYN
County	STAFFORD
State	KANSAS
Date	3/6/22
Run Number	TWO
Depth Driller	4405
Depth Logger	4402
Bottom Logged Interval	4386
Top Log Interval	3000
Casing Driller	8 5/8"@369'
Casing Logger	369
Bit Size	7 7/8"
Type Fluid in Hole	CHEMICAL MUD
Density / Viscosity	9.0/68
pH / Fluid Loss	10.0/10.0
Source of Sample	FLOWLINE
Rm @ Meas. Temp	.500@70F
Rmf @ Meas. Temp	.375@70F
Rmc @ Meas. Temp	.600@70F
Source of Rmf / Rmc	MEASUREMENT
Rm @ BHT	.292@120F
Time Circulation Stopped	4.5 HOURS
Time Logger on Bottom	9:00 P.M.
Maximum Recorded Temperature	120F
Equipment Number	922339
Location	HAYS, KANSAS
Recorded By	JEFF LUEBBERS
Witnessed By	ADAM KENNEDY

<<< Fold Here >>>

All interpretations are opinions based on inferences from electrical or other measurements and we cannot and do not guarantee the accuracy or correctness of any interpretation, and we shall not, except in the case of gross or willful negligence on our part, be liable or responsible for any loss, costs, damages, or expenses incurred or sustained by anyone resulting from any interpretation made by any of our officers, agents or employees. These interpretations are also subject to our general terms and conditions set out in our current Price Schedule.

15-185-24102-0000 Comments

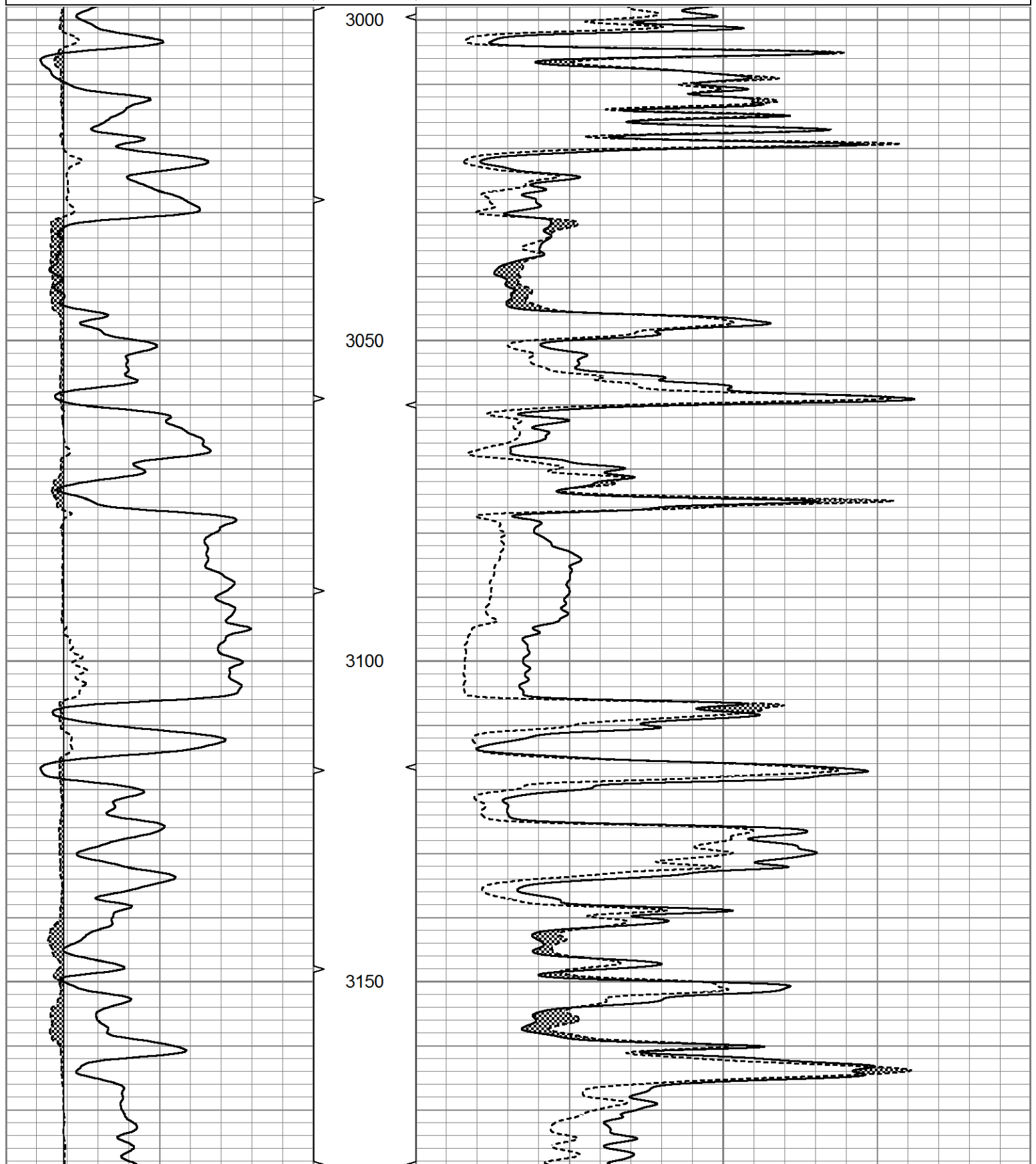
THANK YOU FOR USING ELI WIRELINE HAYS, KANSAS (785) 628-6395
 DIRECTIONS
 ST. JOHN, KS. S. TO (HWY 50 & 281 JUNCTION) 6W. ON HWY 50, 1/2N., W. INTO

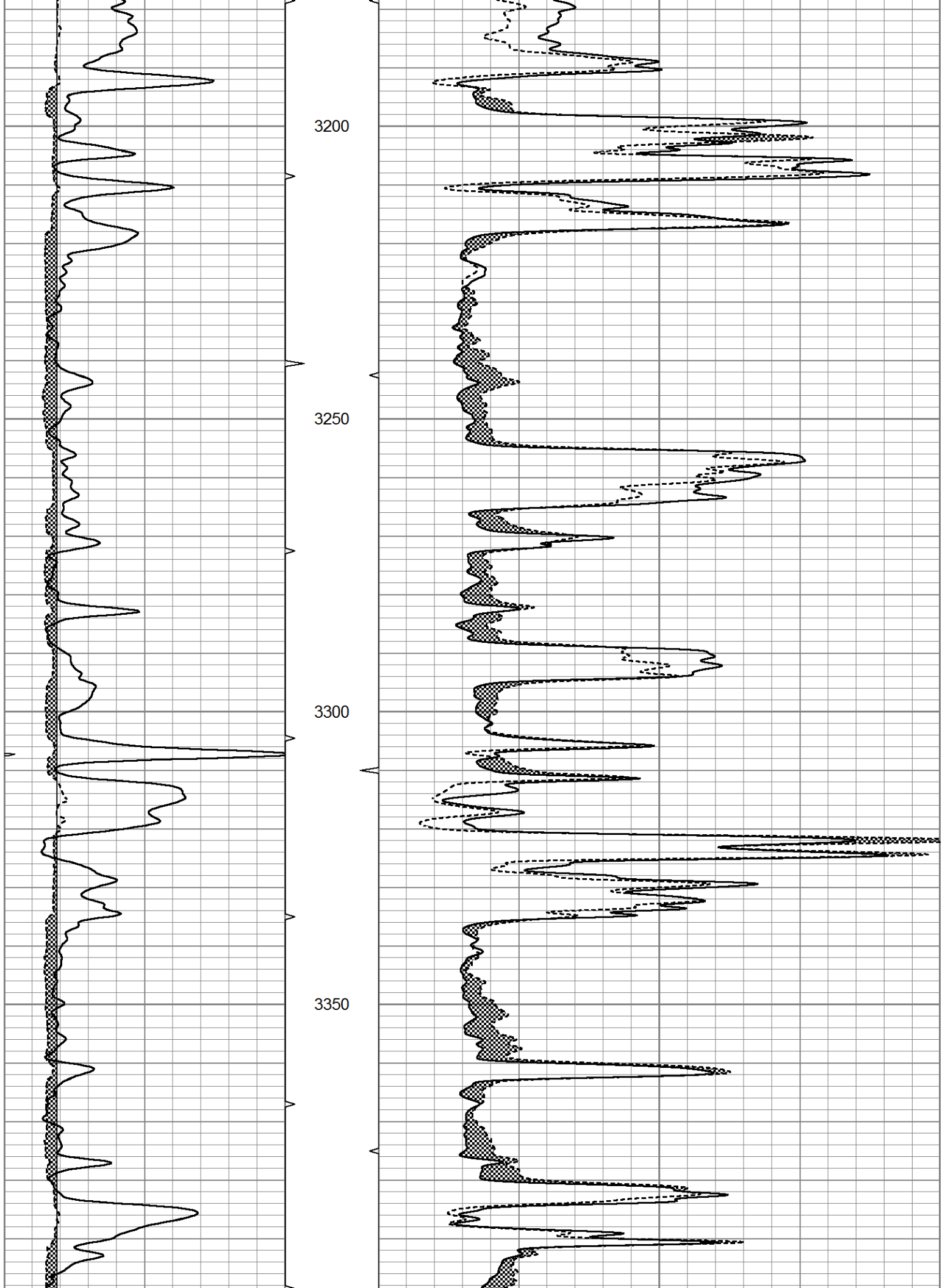


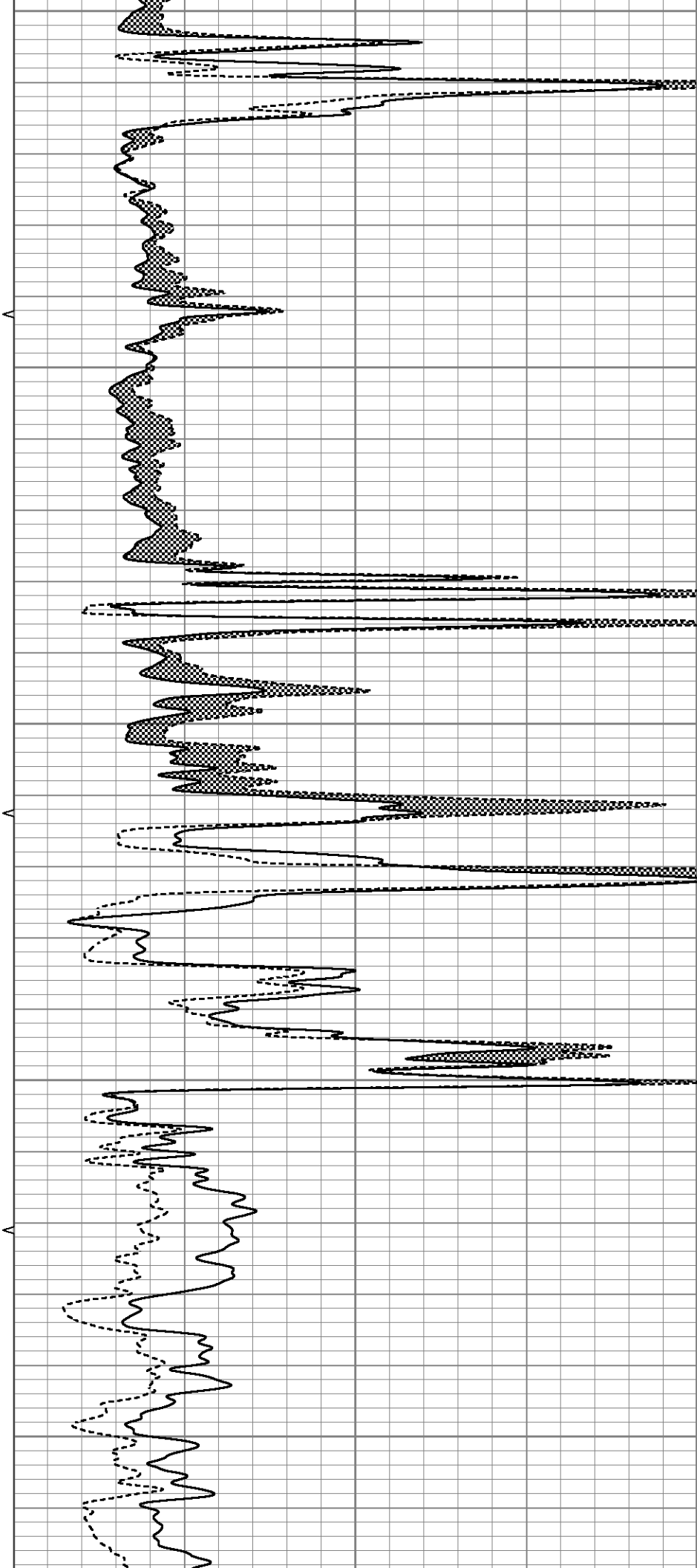
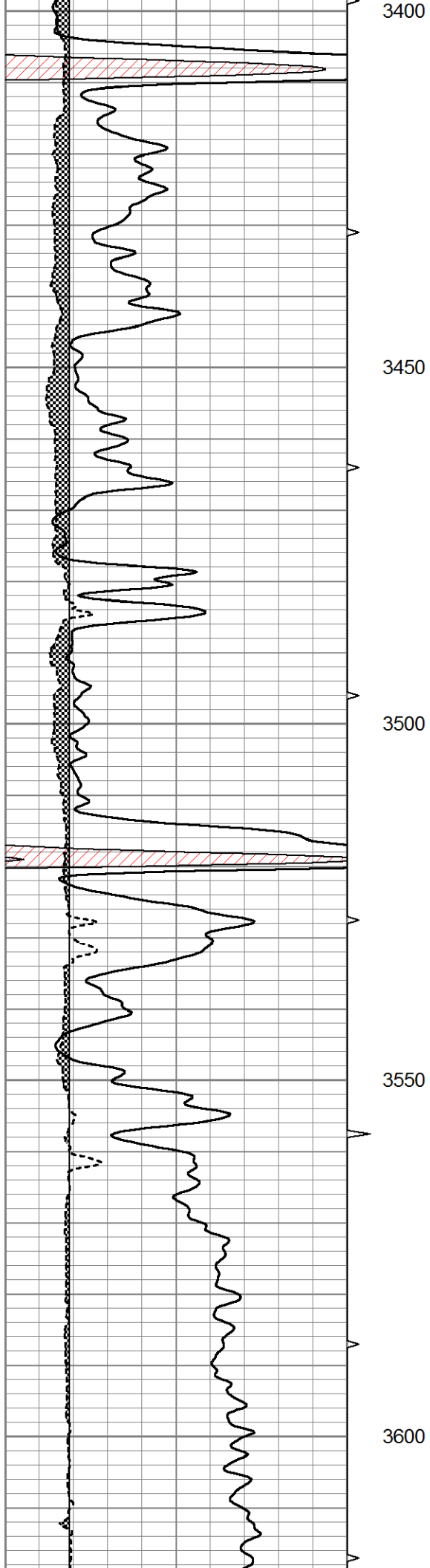
MAIN SECTION

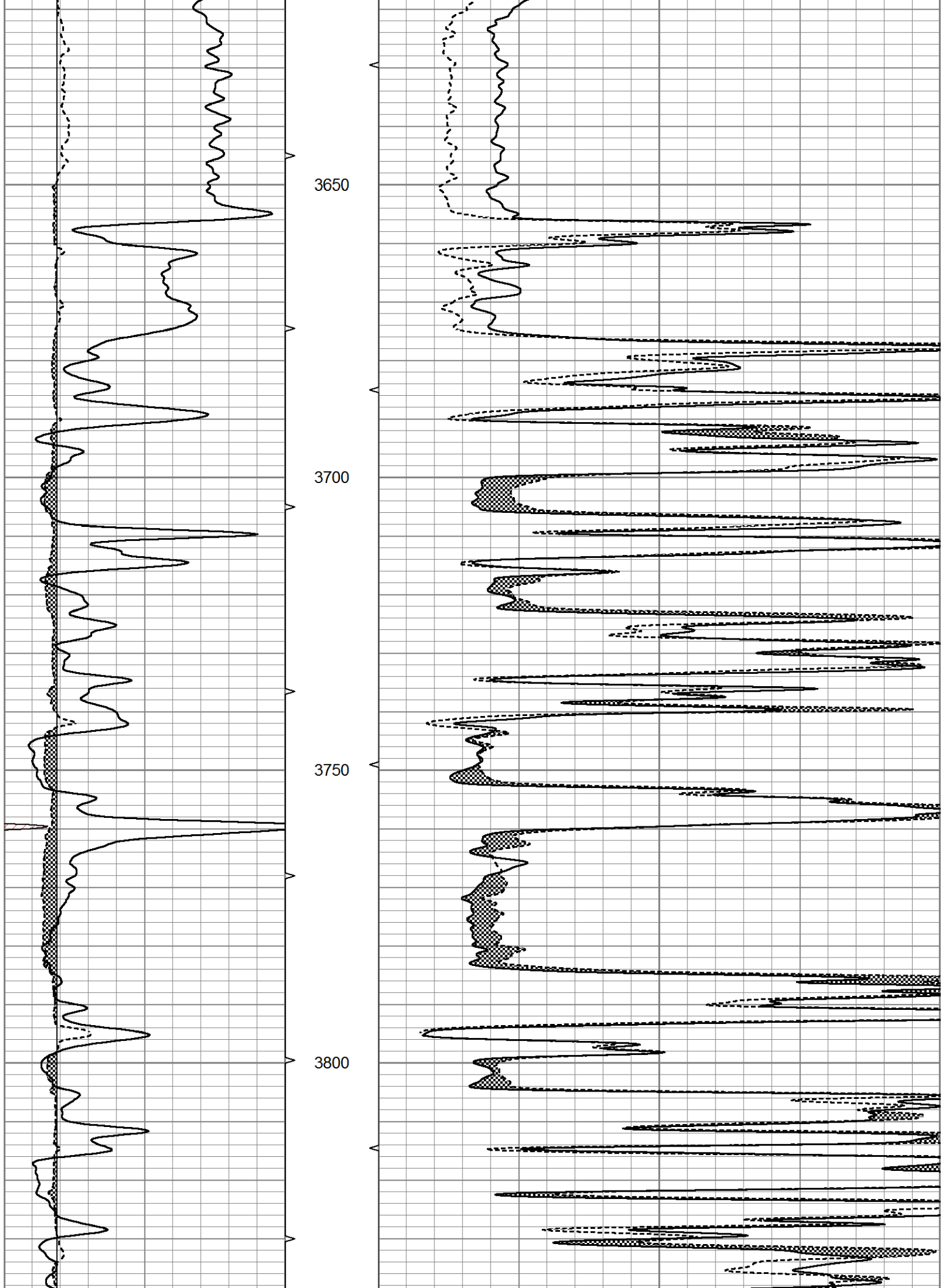
Database File 6257pe.db
 Dataset Pathname pass6.3
 Presentation Format micro
 Dataset Creation Sun Mar 06 21:48:14 2022
 Charted by Depth in Feet scaled 1:240

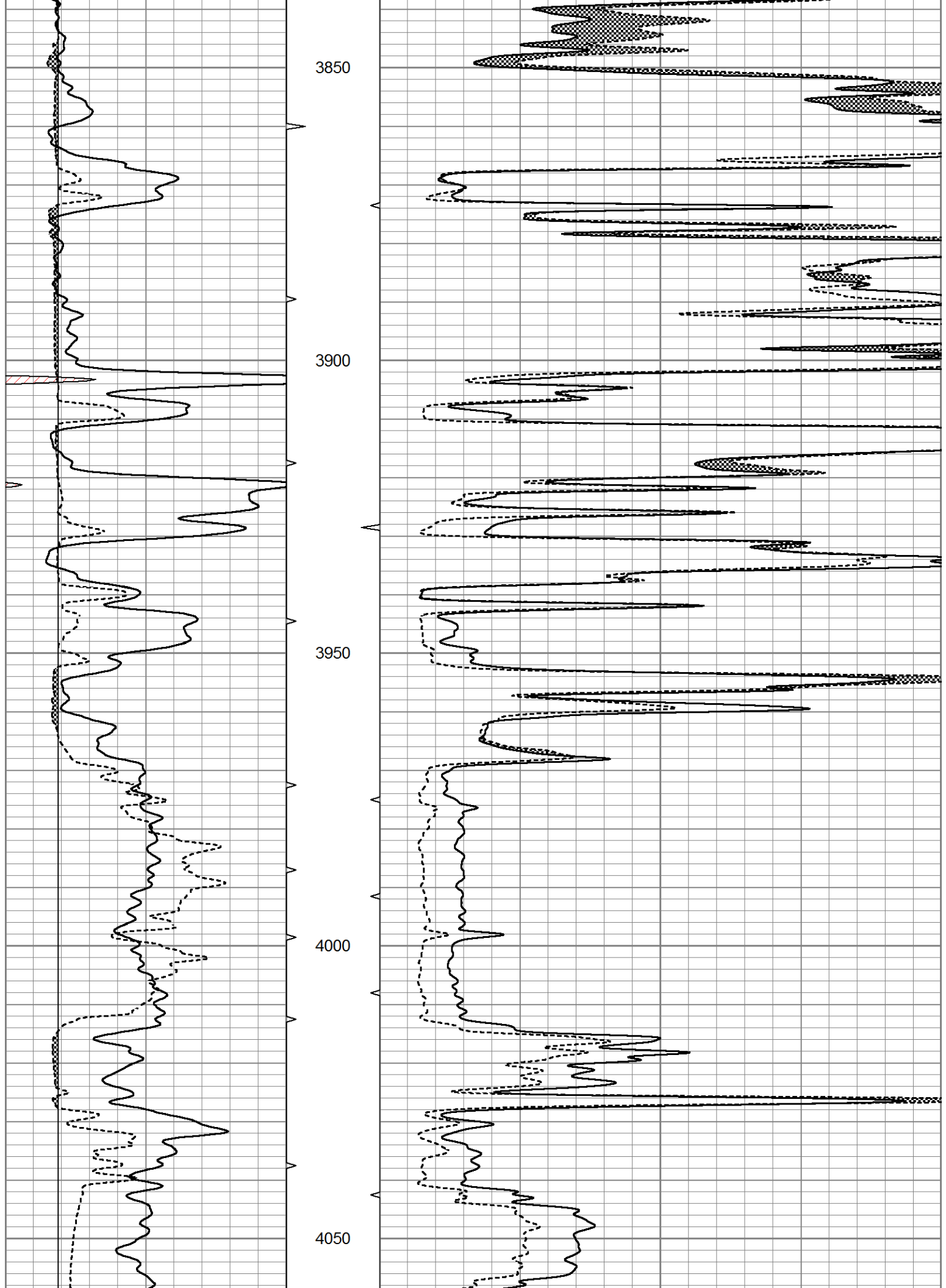
0	GR (GAPI)	150	ABHV	0	MEL20 (Ohm-m)	40
6	MELCAL (in)	16	10 (ft3)	0	MEL15 (Ohm-m)	40
			ABHV			
			0 (ft3)	10		

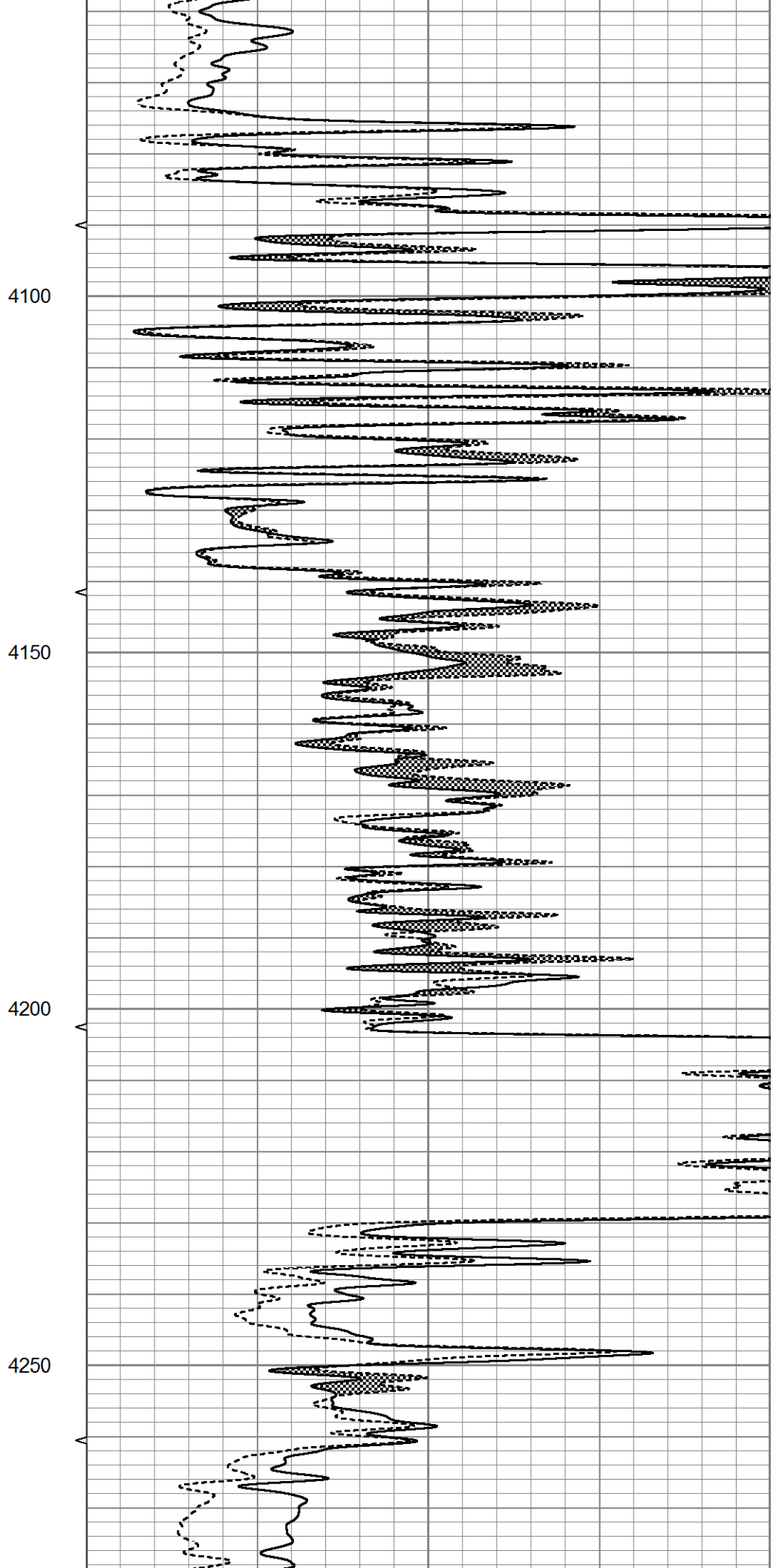
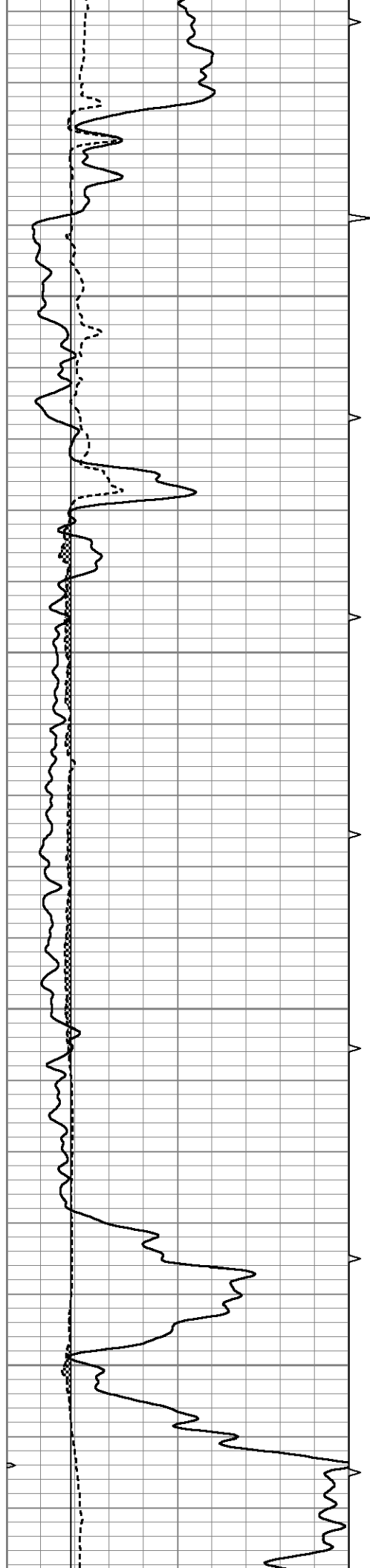


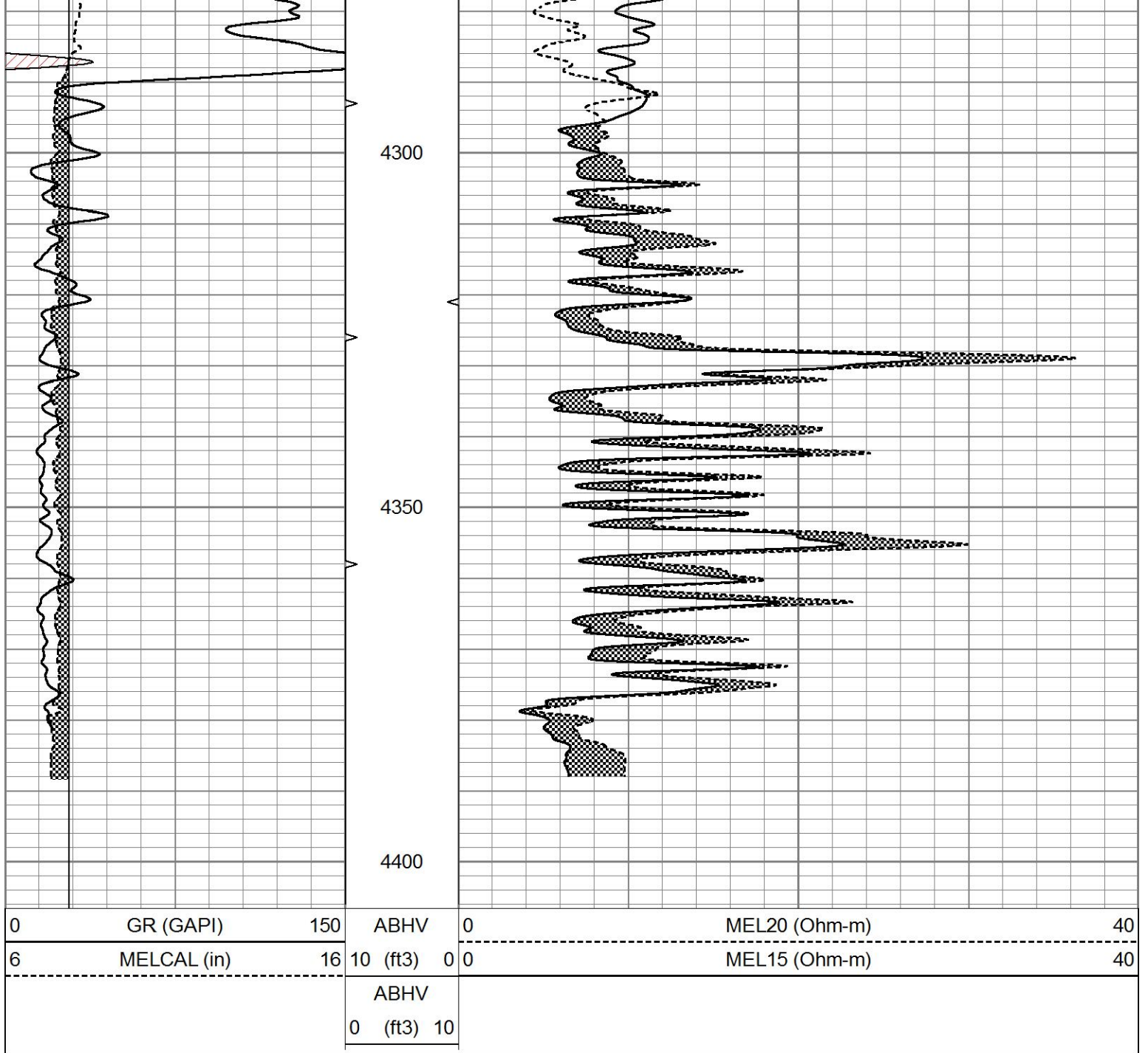








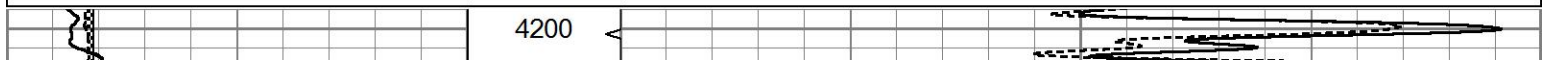


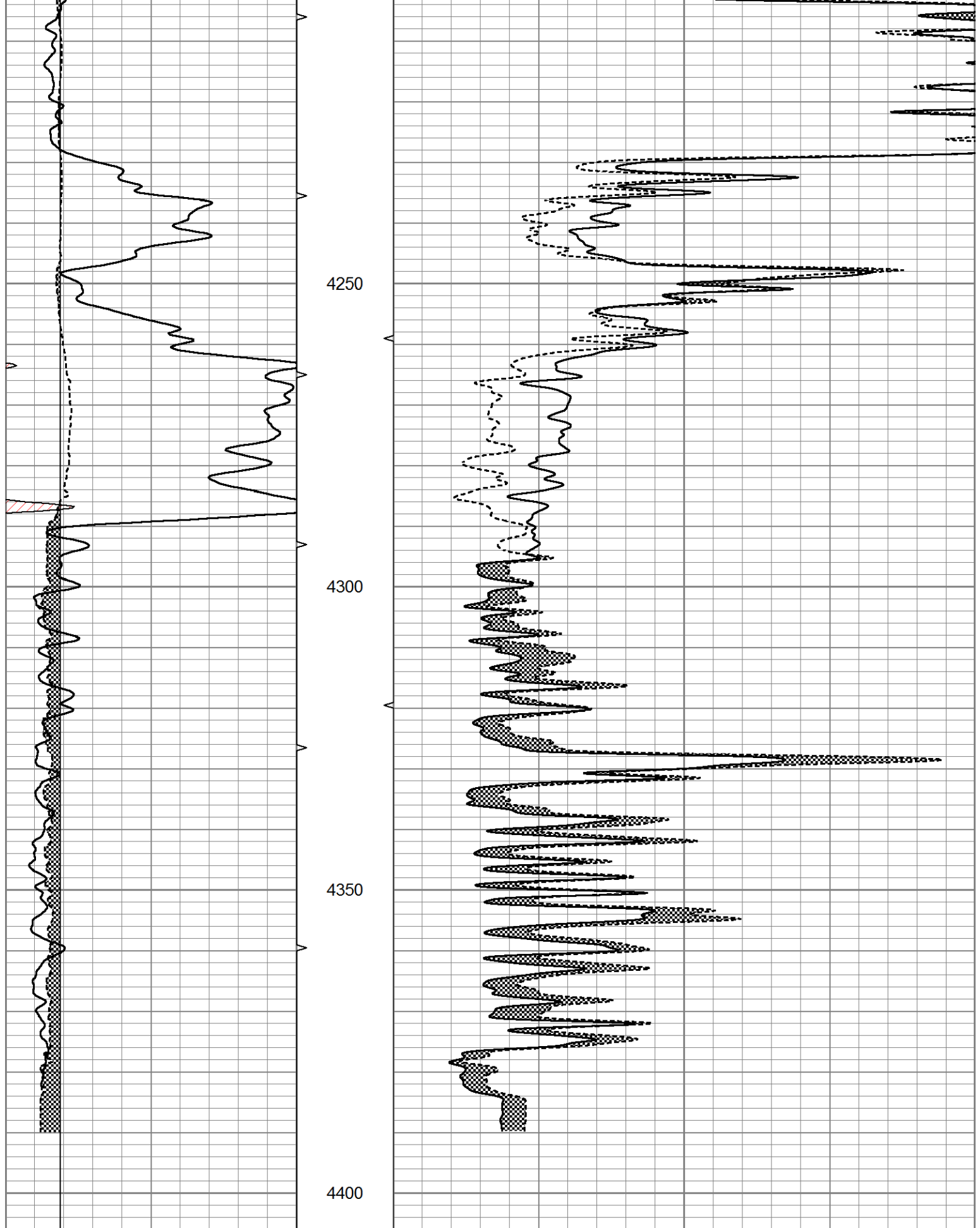


REPEAT SECTION

Database File 6257pe.db
 Dataset Pathname pass5.2
 Presentation Format micro
 Dataset Creation Sun Mar 06 21:33:44 2022
 Charted by Depth in Feet scaled 1:240

0	GR (GAPI)	150	ABHV	0	MEL20 (Ohm-m)	40
6	MELCAL (in)	16	10 (ft3)	0	MEL15 (Ohm-m)	40
			ABHV			
			0 (ft3)	10		





0	GR (GAPI)	150	ABHV	0	MEL20 (Ohm-m)	40
6	MELCAL (in)	16	10 (ft3)	0	MEL15 (Ohm-m)	40

			ABHV			
			0 (ft3)	10		

Calibration Report

Database File 6257pe.db
 Dataset Pathname pass6.3
 Dataset Creation Sun Mar 06 21:48:14 2022

MICRO Calibration Report

Serial Number: 070912
 Tool Model: ProbeN
 Performed: Wed Mar 02 17:46:38 2022

Caliper Calibration:	Gain=3.306	Offset=0.793
	Low Cal	High Cal
References	8.000	16.000
Readings	2.180	4.600

1.5" Calibration:	Gain=32.000	Offset=0.000
	Low Cal	High Cal
References	0.000	20.000
Readings	0.002	1.239

2" Calibration:	Gain=45.000	Offset=1.000
	Low Cal	High Cal
References	0.000	20.000
Readings	0.003	1.075

Gamma Ray Calibration Report

Serial Number: 070558
 Tool Model: OPEN_GR
 Performed: Wed Mar 02 14:49:46 2022

Calibrator Value:	1.0	GAPI
Background Reading:	0.0	cps
Calibrator Reading:	1.0	cps
Sensitivity:	0.2800	GAPI/cps