



**COMPENSATED  
DENSITY / NEUTRON  
PE LOG**

Company EDISON OPERATING CO., LLC.  
Well DORAN #2-16  
Field DILLWYN  
County STAFFORD  
State KANSAS

Company EDISON OPERATING COMPANY, LLC.  
Well DORAN #2-16  
Field DILLWYN  
County STAFFORD State KANSAS

Location: API #: 15-185-24102-0000  
1661' FSL & 2310' FEL  
N/2 - SW - NW - SE  
SEC 16 TWP 24S RGE 14W  
Permanent Datum GROUND LEVEL Elevation 1973  
Log Measured From KELLY BUSHING 10' A.G.L.  
Drilling Measured From KELLY BUSHING  
Other Services  
DILMEL  
SONIC  
Elevation  
K.B. 1983  
D.F. 1981  
G.L. 1973

Date	3/6/22
Run Number	ONE
Depth Driller	4405
Depth Logger	4402
Bottom Logged Interval	4378
Top Log Interval	3000
Casing Driller	8 5/8"@369'
Casing Logger	369
Bit Size	7 7/8"
Type Fluid in Hole	CHEMICAL MUD
Density / Viscosity	9.0/68
pH / Fluid Loss	10.0/10.0
Source of Sample	FLOWLINE
Rm @ Meas. Temp	.500@70F
Rmf @ Meas. Temp	.375@70F
Rmc @ Meas. Temp	.600@70F
Source of Rmf / Rmc	MEASUREMENT
Rm @ BHT	.292@120F
Time Circulation Stopped	2.5 HOURS
Time Logger on Bottom	6:30 P.M.
Maximum Recorded Temperature	120F
Equipment Number	922339
Location	HAYS, KANSAS
Recorded By	JEFF LUEBBERS
Witnessed By	ADAM KENNEDY

<<< Fold Here >>>

All interpretations are opinions based on inferences from electrical or other measurements and we cannot and do not guarantee the accuracy or correctness of any interpretation, and we shall not, except in the case of gross or willful negligence on our part, be liable or responsible for any loss, costs, damages, or expenses incurred or sustained by anyone resulting from any interpretation made by any of our officers, agents or employees. These interpretations are also subject to our general terms and conditions set out in our current Price Schedule.

15-185-24102-0000 Comments

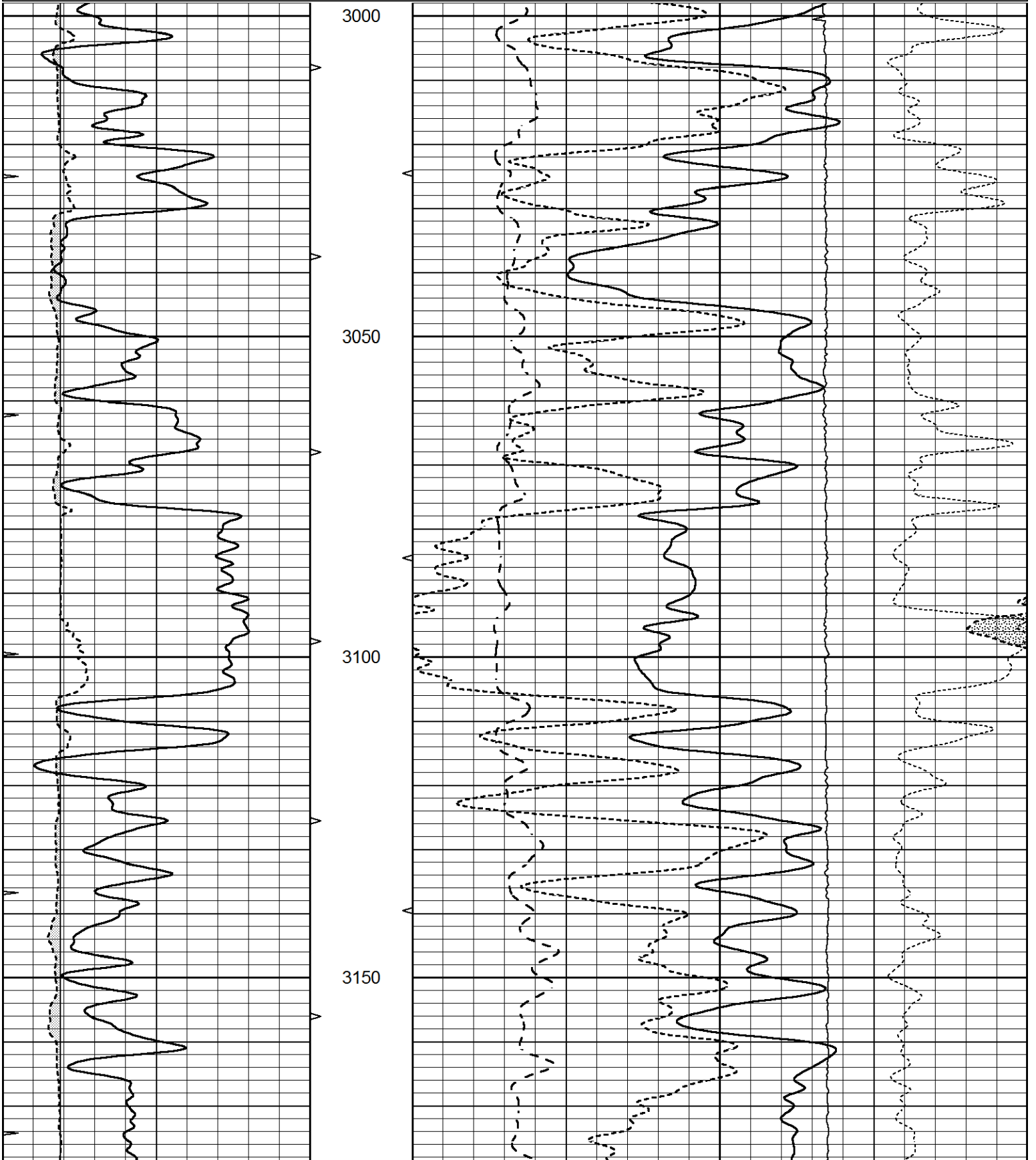
THANK YOU FOR USING ELI WIRELINE HAYS, KANSAS (785) 628-6395  
DIRECTIONS  
ST. JOHN, KS. S. TO (HWY 50 & 281 JUNCTION) 6W. ON HWY 50, 1/2N., W. INTO

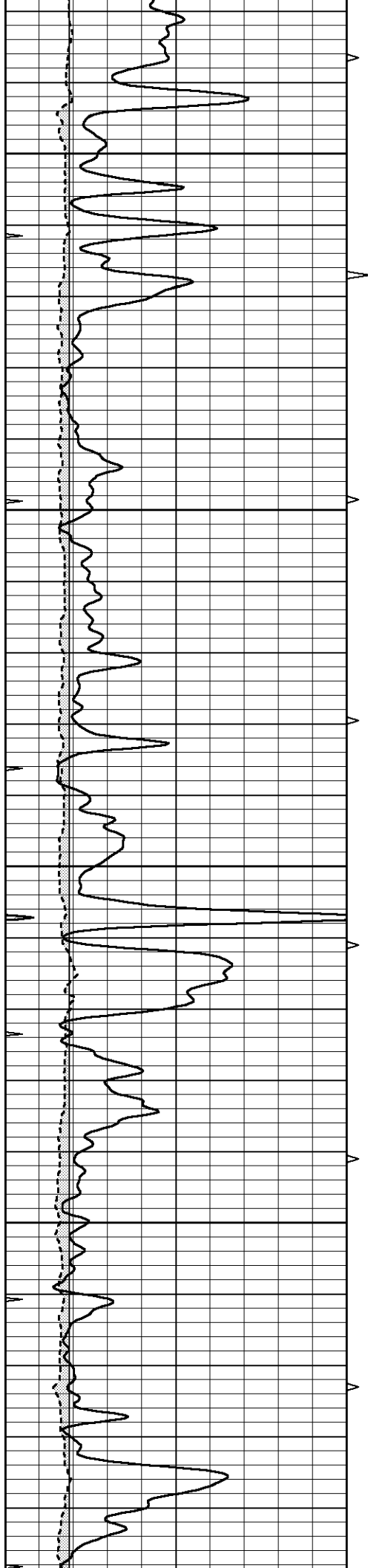


# MAIN SECTION

Database File 6257pe.db  
 Dataset Pathname pass3.1M  
 Presentation Format ldt\_neu  
 Dataset Creation Sun Mar 06 20:07:22 2022  
 Charted by Depth in Feet scaled 1:240

0	GAMMA RAY (GAPI)	150	ABHV	30	COMPENSATED DENSITY (pu)			-10	
6	CALIPER (in)	16	10 (ft3)	0	COMPENSATED NEUTRON (pu)			-10	
0	MINMK	20	TBHV	0	PE	10	-0.25	CORRECTION (g/cc)	0.25
			0 (ft3)	10			0	LTEN (lb)	5000



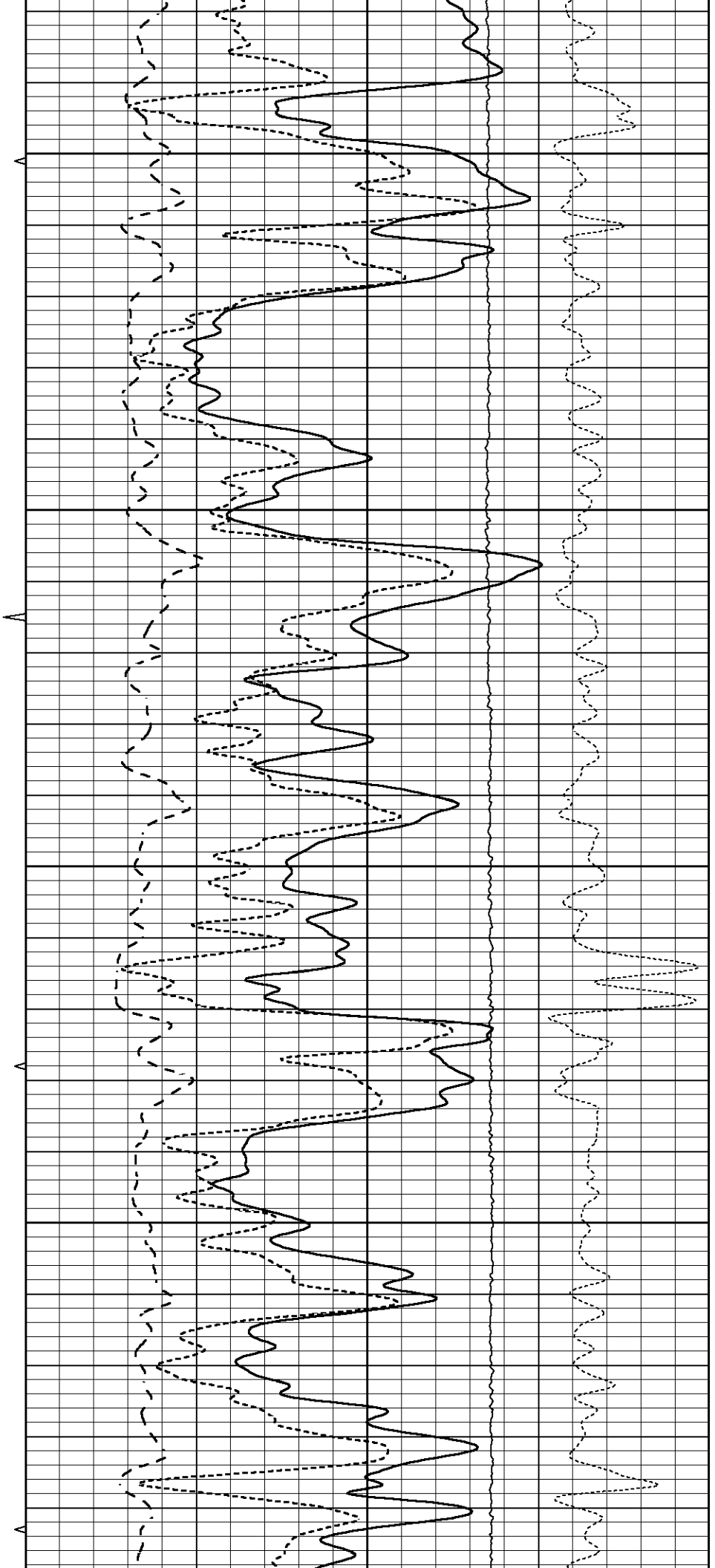


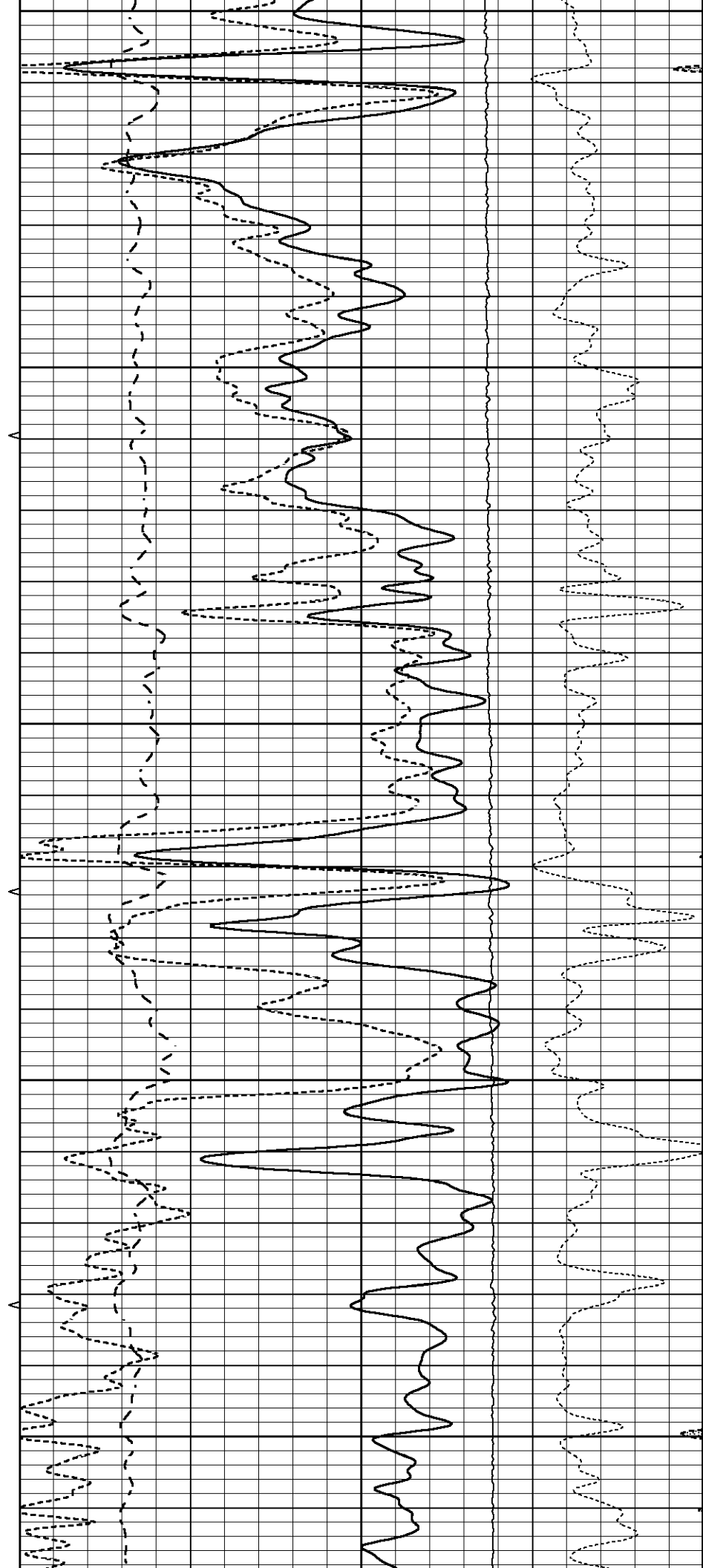
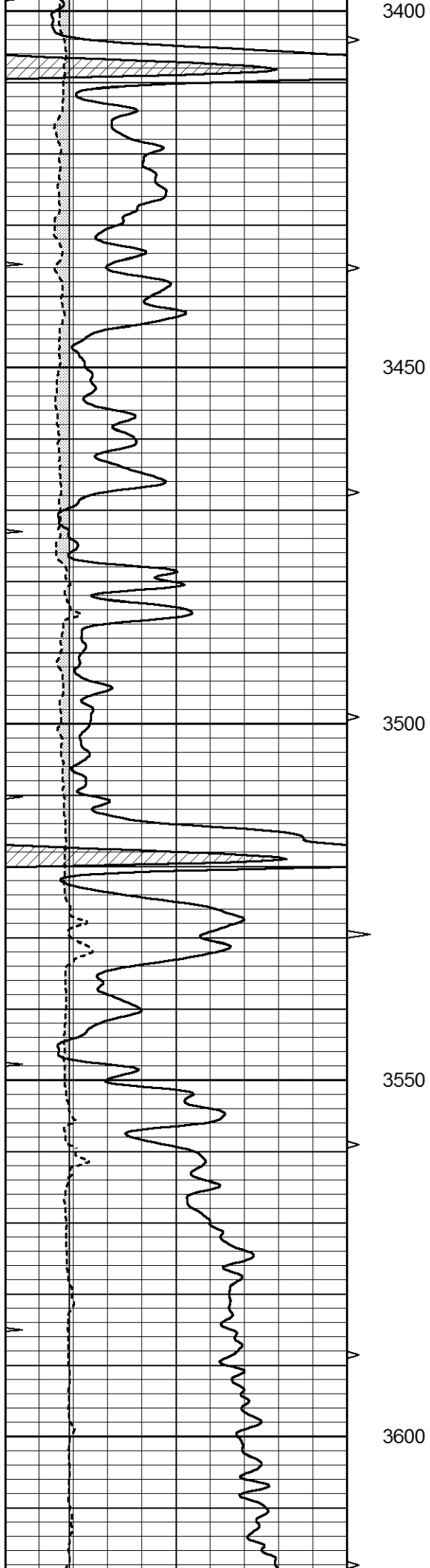
3200

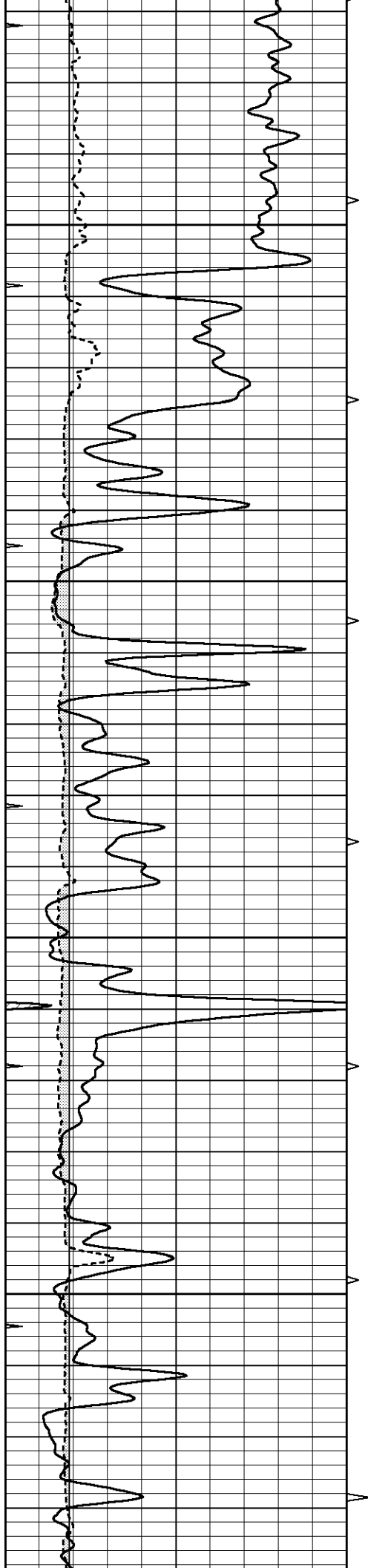
3250

3300

3350





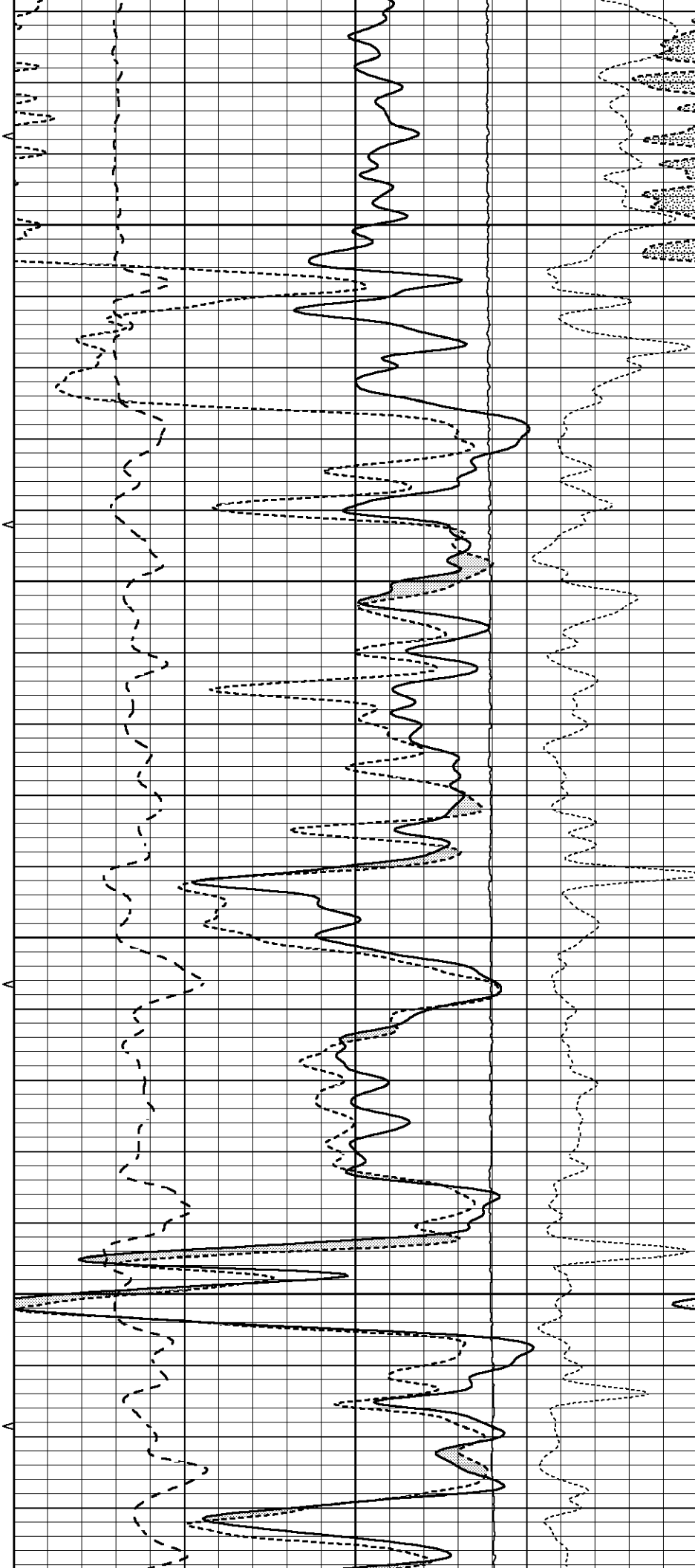


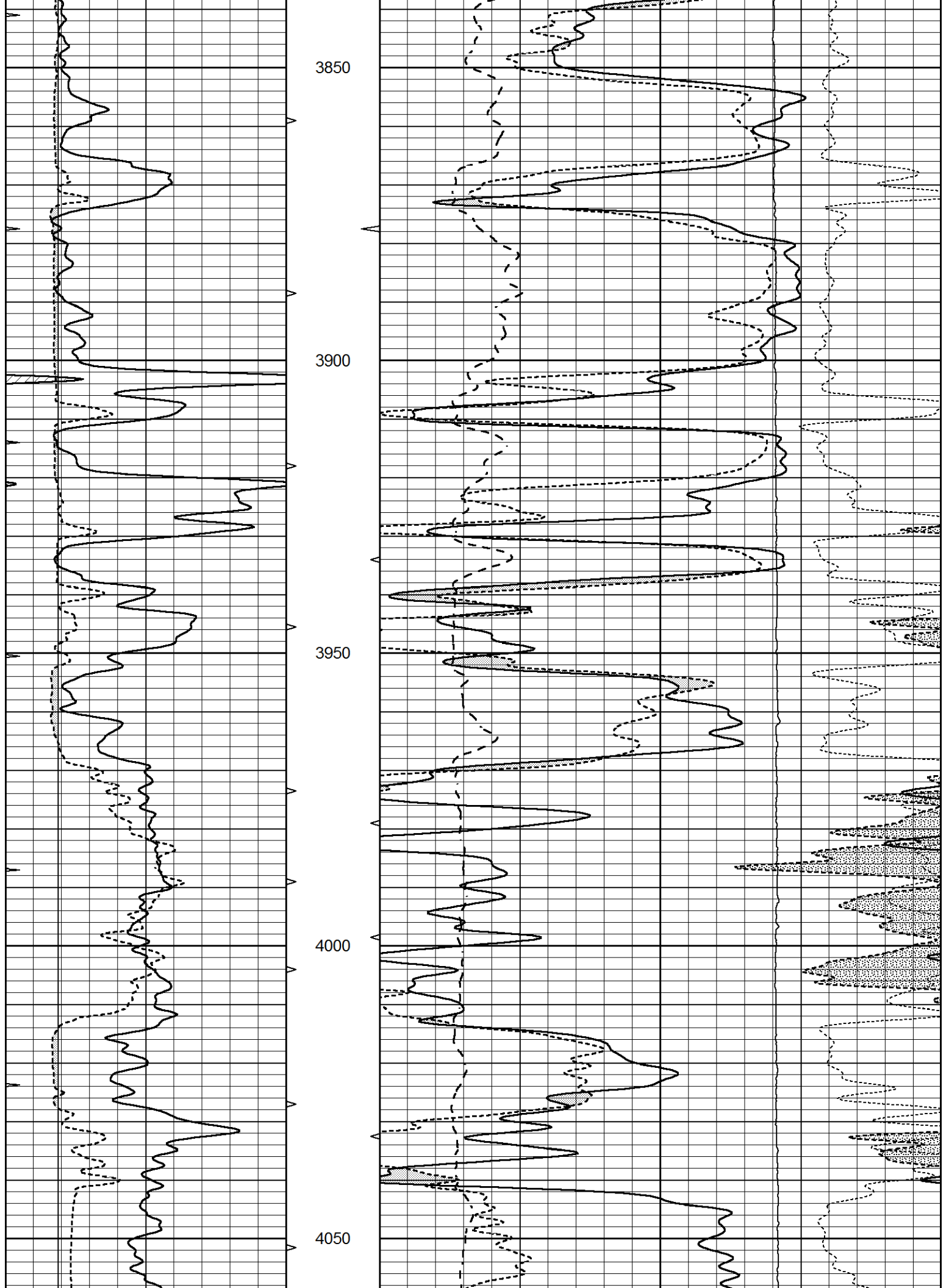
3650

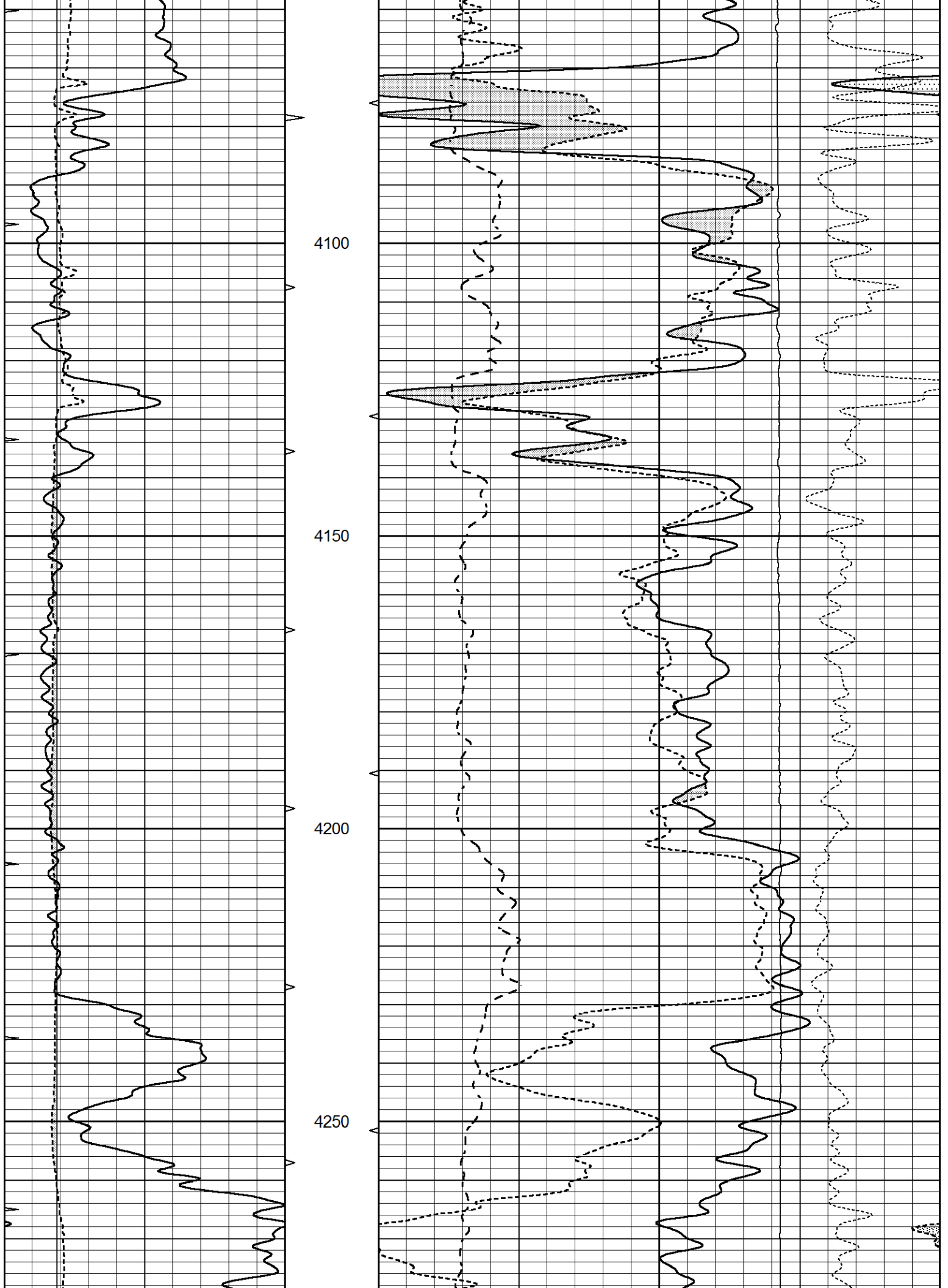
3700

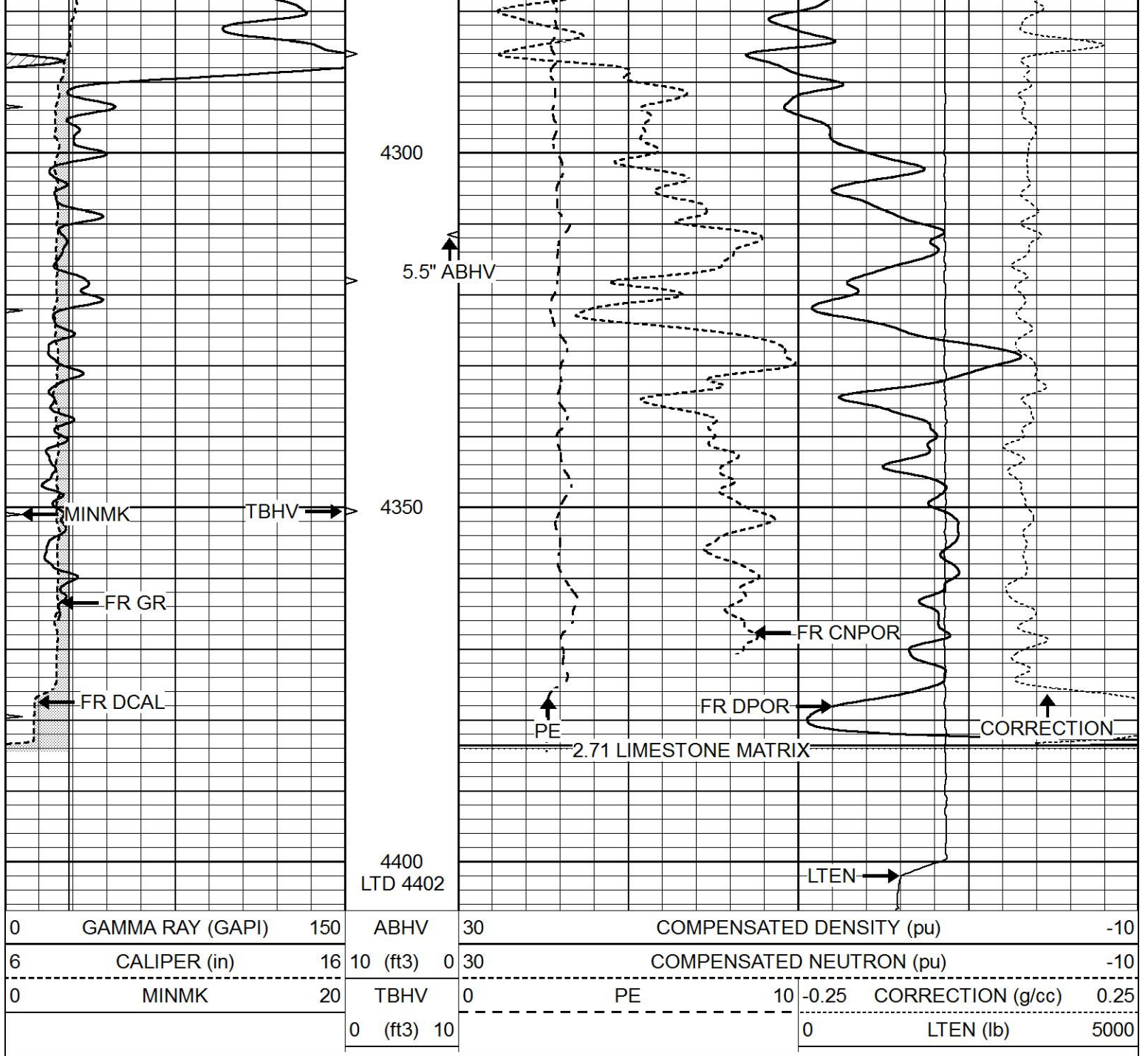
3750

3800





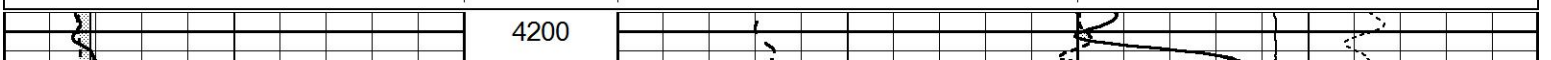




# REPEAT SECTION

Database File 6257pe.db  
 Dataset Pathname pass2.1R  
 Presentation Format ldt\_neu  
 Dataset Creation Sun Mar 06 20:07:43 2022  
 Charted by Depth in Feet scaled 1:240

0	GAMMA RAY (GAPI)	150	ABHV	30	COMPENSATED DENSITY (pu)	-10
6	CALIPER (in)	16	10 (ft3) 0	30	COMPENSATED NEUTRON (pu)	-10
0	MINMK	20	TBHV	0	PE	10 -0.25 CORRECTION (g/cc) 0.25
			0 (ft3) 10			0 LTEN (lb) 5000



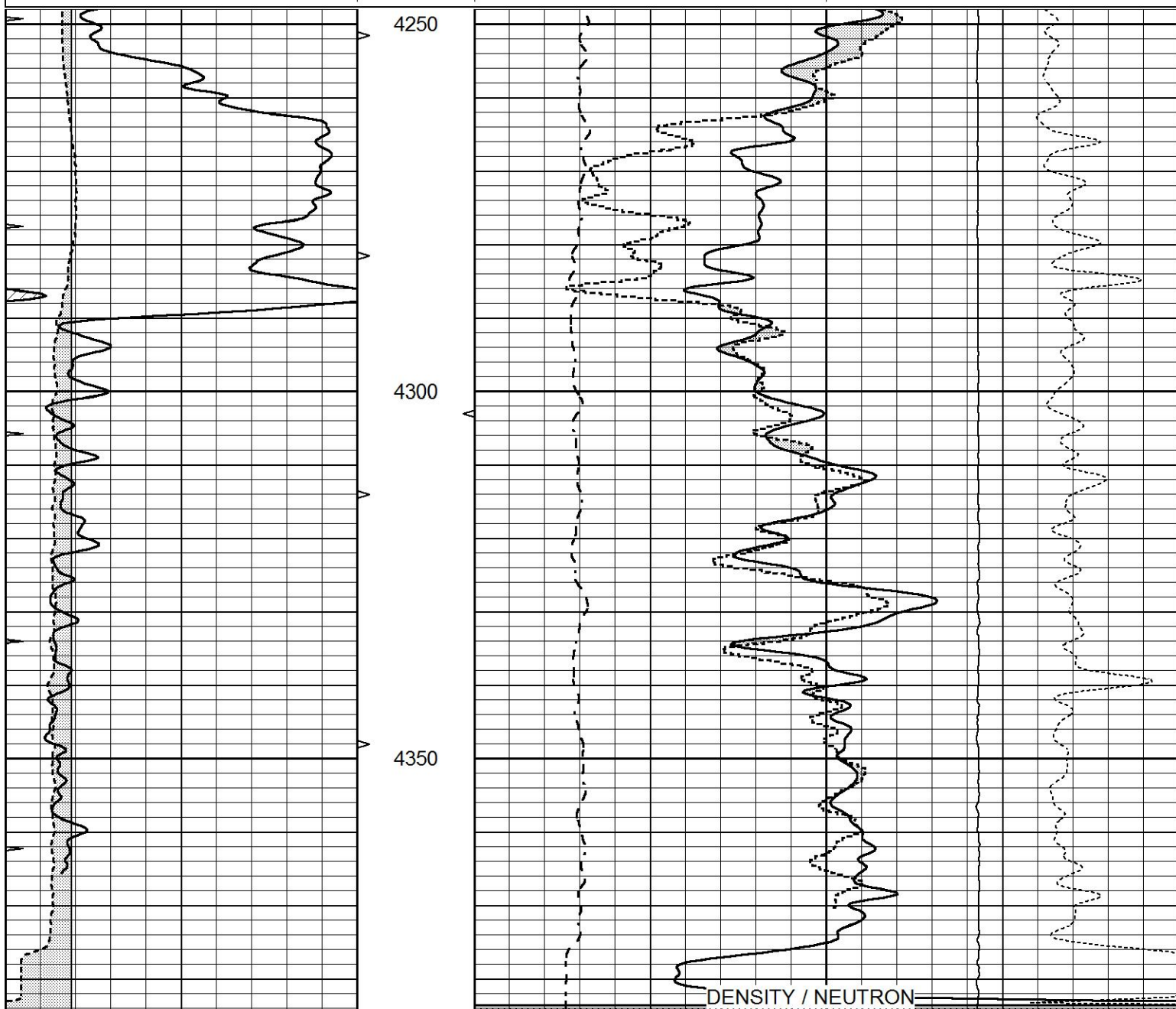




# DOLOMITE MATRIX

Database File 6257pe.db  
 Dataset Pathname pass2.1D  
 Presentation Format ldt\_neu  
 Dataset Creation Sun Mar 06 18:59:35 2022  
 Charted by Depth in Feet scaled 1:240

0	GAMMA RAY (GAPI)	150	ABHV	30	COMPENSATED DENSITY (pu)		-10
6	CALIPER (in)	16	10 (ft3)	0	COMPENSATED NEUTRON (pu)		-10
0	MINMK	20	TBHV	0	PE	10	-0.25 CORRECTION (g/cc) 0.25
			0 (ft3)	10			0 LTEN (lb) 5000



DENSITY / NEUTRON  
2.81 ARBUCKLE DOLOMITE MATRIX



Window 3	1206.8	4705.7	1944.6	1871.7	cps
Window 4	361.0	367.9	364.8	363.1	cps
Long Space	0.0	7337.5	1578.9	1342.7	cps
Short Space	2.7	2543.4	1657.9	1382.7	cps
Rho		1.7100	2.5900	0.0000	g/cc
Pe		2.0000	2.7500	5.7900	

Rib Angle : 44.4      Rib Slope : 0.980      Density/Spine Ratio : 0.552  
 Spine Angle : 74.4      Spine Slope : 3.590      Spine Intercept : -19.2

Before Survey Verification

Performed Wed Dec 31 18:00:00 1969

Window 1	0.0	0.0	0.0	0.0	cps
Window 2	0.0	0.0	0.0	0.0	cps
Window 3	0.0	0.0	0.0	0.0	cps
Window 4	0.0	0.0	0.0	0.0	cps
Long Space	0.0	0.0	0.0	0.0	cps
Short Space	0.0	0.0	0.0	0.0	cps
Measured Rho		0.0000	0.0000	0.0000	g/cc
Measured Correction		0.0000	0.0000	0.0000	g/cc
Measured Pe			0.0000	0.0000	

After Survey Verification

Performed Wed Dec 31 18:00:00 1969

Window 1	0.0	0.0	0.0	0.0	cps
Window 2	0.0	0.0	0.0	0.0	cps
Window 3	0.0	0.0	0.0	0.0	cps
Window 4	0.0	0.0	0.0	0.0	cps
Long Space	0.0	0.0	0.0	0.0	cps
Short Space	0.0	0.0	0.0	0.0	cps
Measured Rho		0.0000	0.0000	0.0000	g/cc
Measured Correction		0.0000	0.0000	0.0000	g/cc
Measured Pe			0.0000	0.0000	

Compensated Neutron Calibration Report

Serial Number: 070808PMC  
 Tool Model: NABORS

PRE-SURVEY VERIFICATION

Detector	Readings	Measured	Target
Short Space	cps		
Long Space	cps	pu	pu

POST-SURVEY VERIFICATION

Detector	Readings	Measured	Target
Short Space	cps		
Long Space	cps	pu	pu

Gamma Ray Calibration Report

Serial Number: 070558  
 Tool Model: OPEN\_GR  
 Performed: Wed Mar 02 14:49:46 2022  
 Calibrator Value: 1.0      GAPI

Background Reading:	0.0	cps
Calibrator Reading:	1.0	cps
Sensitivity:	0.2800	GAPI/cps