

MICRO LOG



Company BRISCOE PETROLEUM, LLC.  
 Well MILLIE #1  
 Field UNNAMED  
 County HARPER State KANSAS

Location: 3290' FSL & 1895' FWL  
 NE - SW - SE - NW  
 API #: 15-077-22189-0000  
 SEC 6 TWP 34S RGE 9W  
 Permanent Datum GROUND LEVEL Elevation 1326  
 Log Measured From KELLY BUSHING 13' A.G.L.  
 Drilling Measured From KELLY BUSHING  
 Other Services CNL/CDL/DIL PE/SONIC  
 Elevation K.B. 1339 D.F. 1337 G.L. 1326

Date	4/21/22
Run Number	TWO
Depth Driller	5250
Depth Logger	5252
Bottom Logged Interval	5246
Top Log Interval	3000
Casing Driller	8 5/8" @ 226'
Casing Logger	223'
Bit Size	7 7/8"
Type Fluid in Hole	CHEMICAL MUD
Density / Viscosity	9.3/73
pH / Fluid Loss	10.5/8.0
Source of Sample	FLOWLINE
Rm @ Meas. Temp	.840 @ 80F
Rmf @ Meas. Temp	.630 @ 80F
Rmc @ Meas. Temp	1.01 @ 80F
Source of Rmf / Rmc	MEASUREMENT
Rm @ BHT	.529 @ 127F
Time Circulation Stopped	5.5 HOURS
Time Logger on Bottom	11:00 P.M.
Maximum Recorded Temperature	127F
Equipment Number	922339
Location	HAYS, KANSAS
Recorded By	JEFF LUEBBERS
Witnessed By	JEREMY SCHWARTZ
	COLE ROBBEN
	RICK BRISCOE

<<< Fold Here >>>

All interpretations are opinions based on inferences from electrical or other measurements and we cannot and do not guarantee the accuracy or correctness of any interpretation, and we shall not, except in the case of gross or willful negligence on our part, be liable or responsible for any loss, costs, damages, or expenses incurred or sustained by anyone resulting from any interpretation made by any of our officers, agents or employees. These interpretations are also subject to our general terms and conditions set out in our current Price Schedule.

15-077-22189-0000 Comments

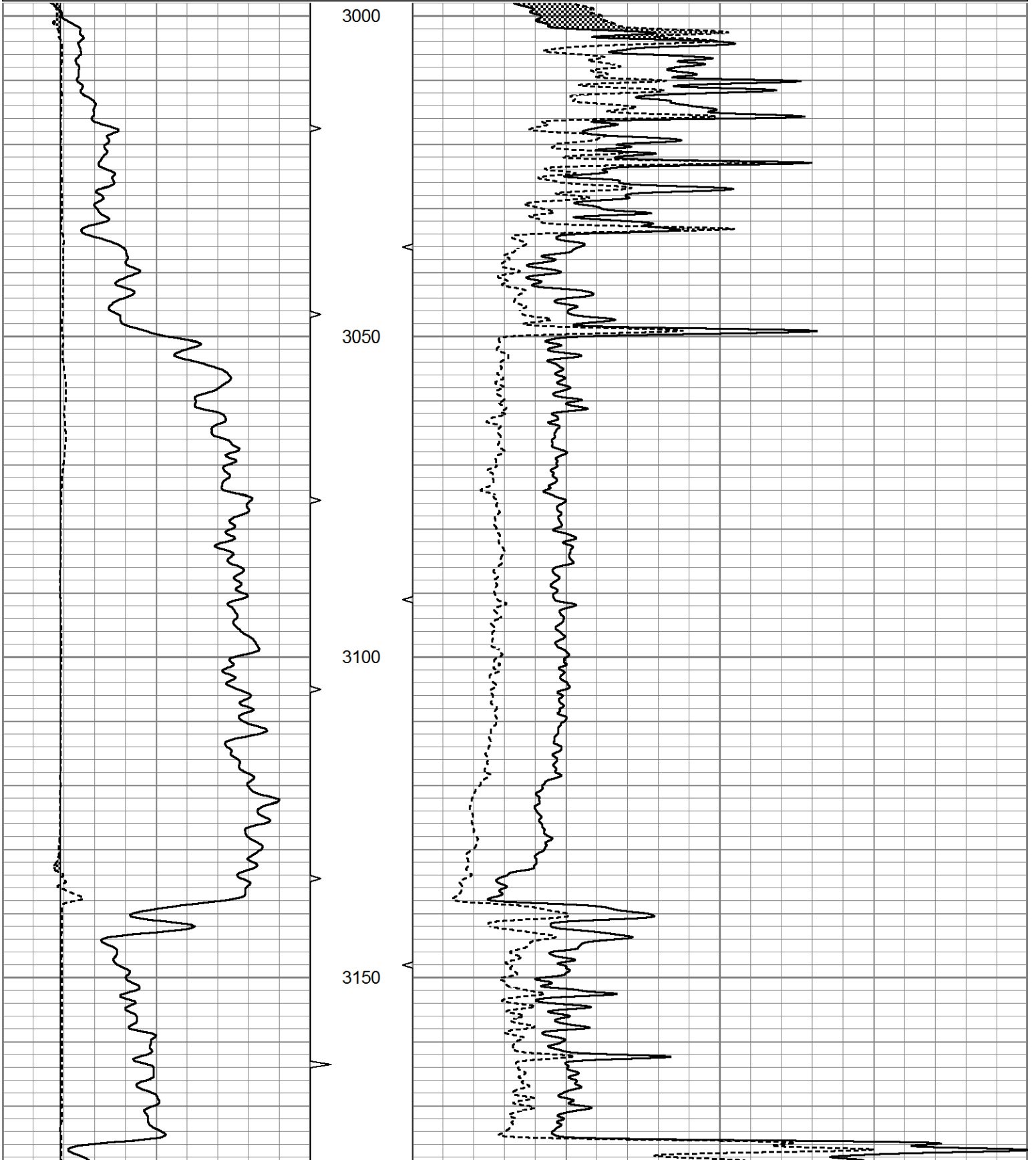
THANK YOU FOR USING ELI WIRELINE HAYS, KANSAS (785) 628-6395  
 DIRECTIONS  
 HAZELTON, KS. E 2.4 ON MAIN ST/SE CORWIN, N 1/4 ON SE CORWIN, E 1 MI,  
 N 1 MI ON HARPER RD. NE 3/4 ON LEASE RD.

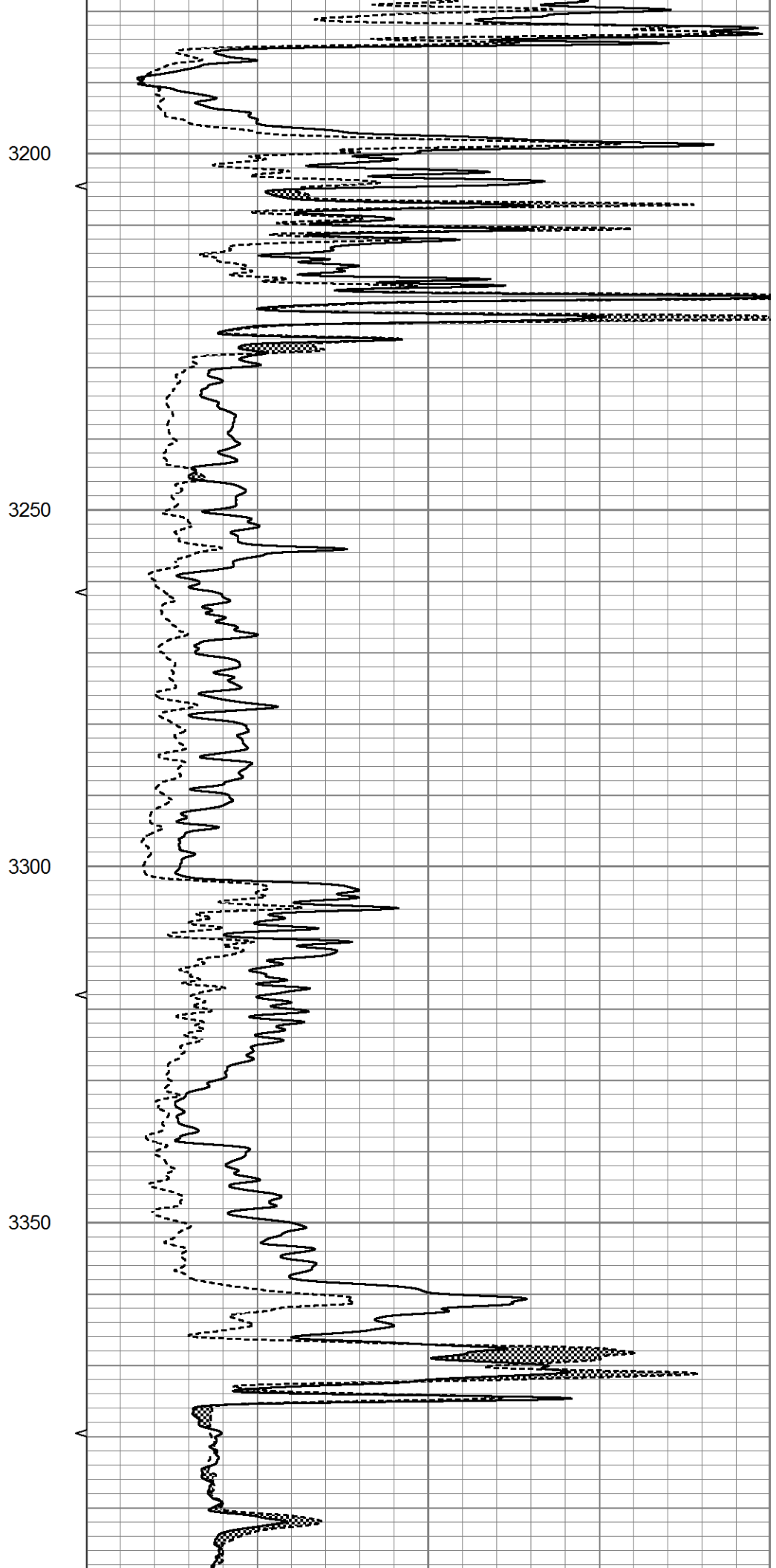
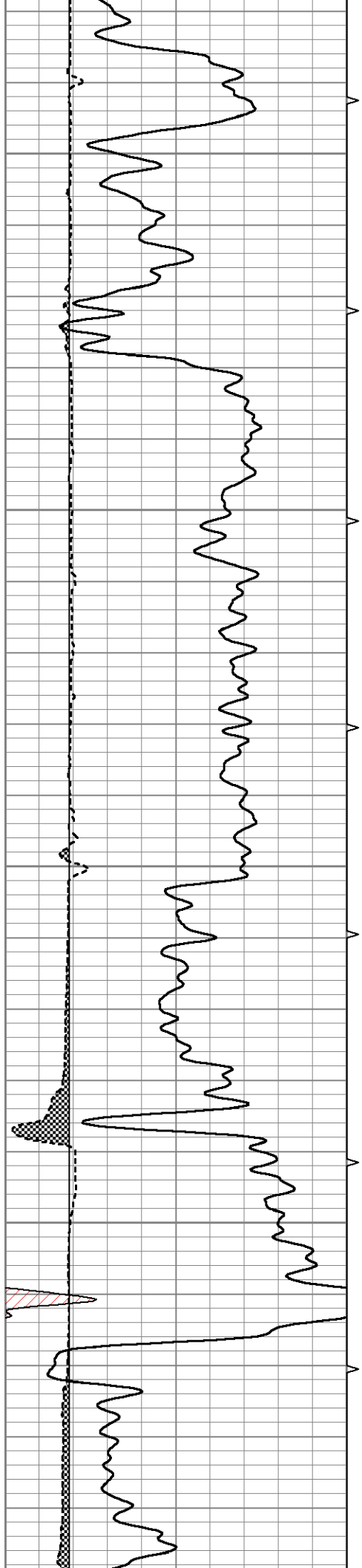


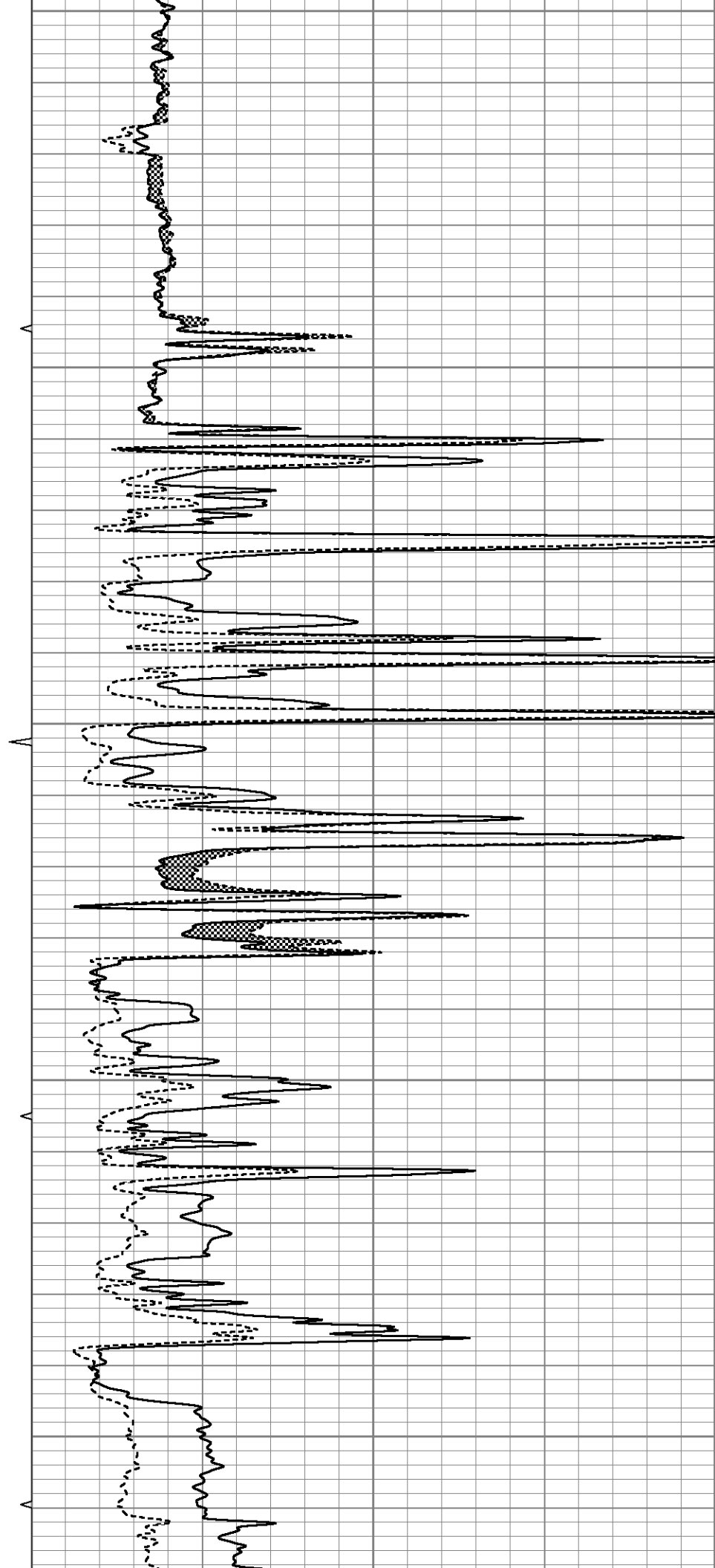
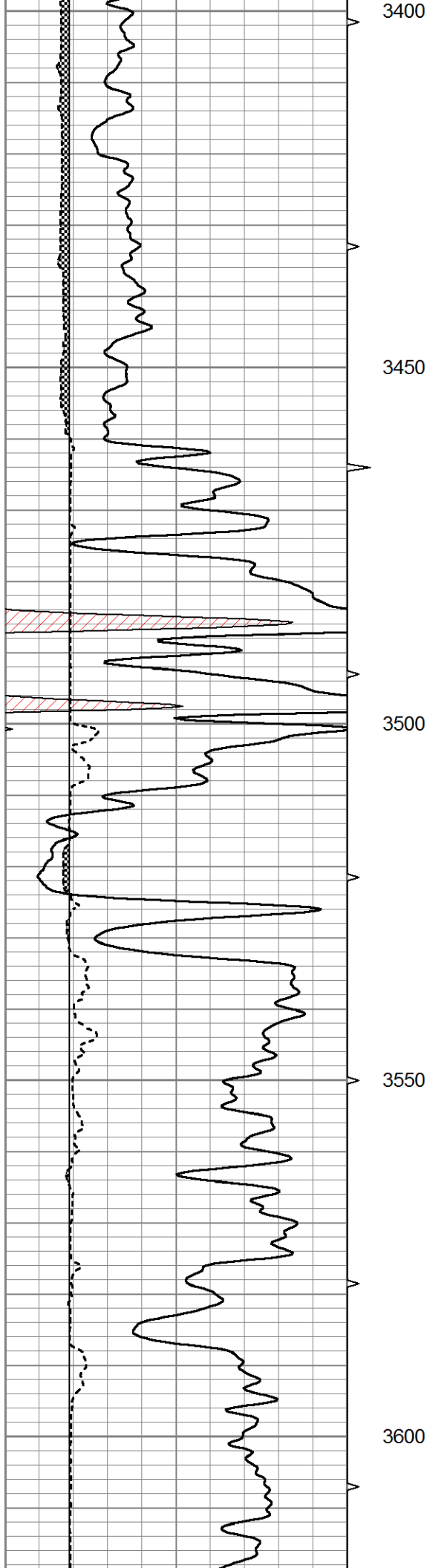
MAIN SECTION

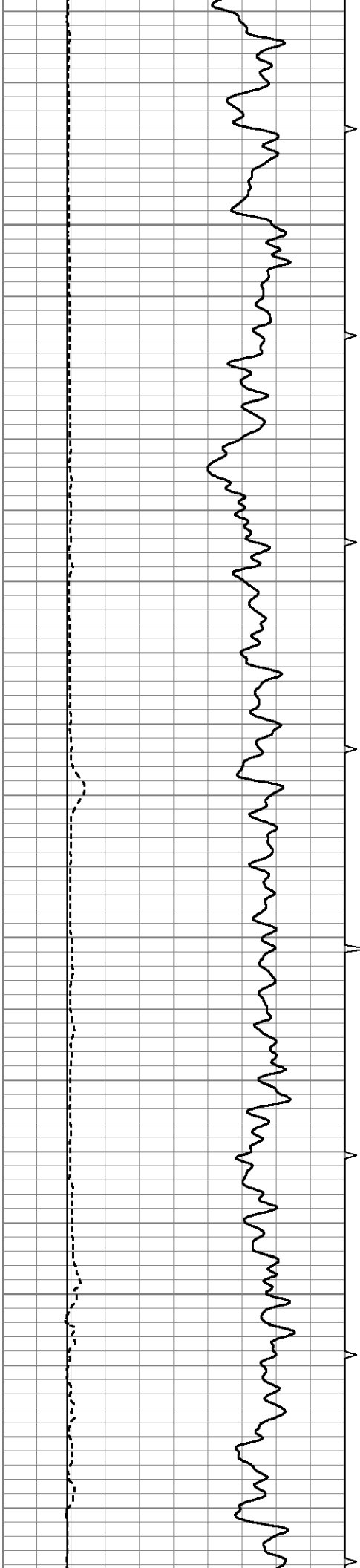
Database File 6333pe.db  
 Dataset Pathname pass8.3  
 Presentation Format micro  
 Dataset Creation Fri Apr 22 00:21:26 2022  
 Charted by Depth in Feet scaled 1:240

0	GR (GAPI)	150	ABHV	0	MEL20 (Ohm-m)	40
6	MELCAL (in)	16	10 (ft3)	0	MEL15 (Ohm-m)	40
			ABHV			
			0 (ft3)	10		







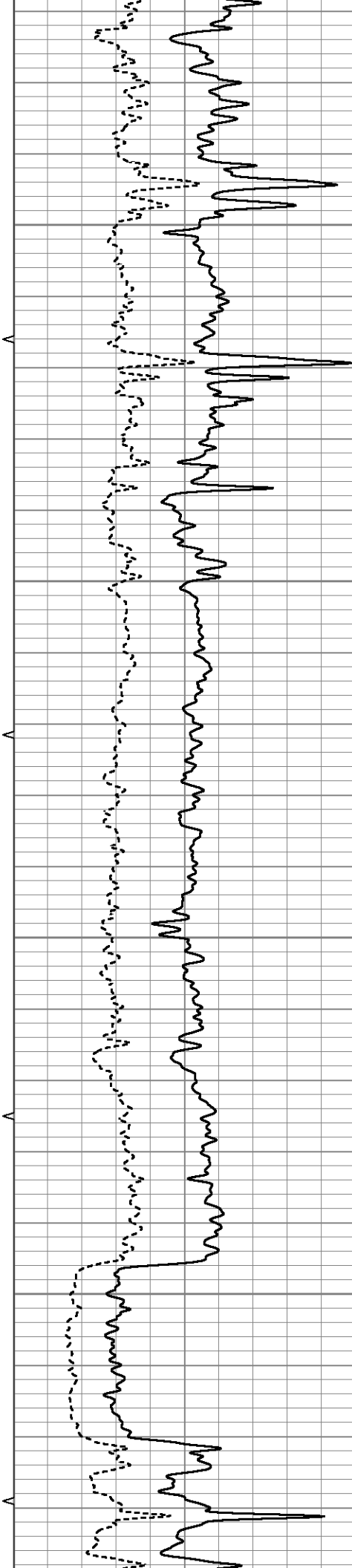


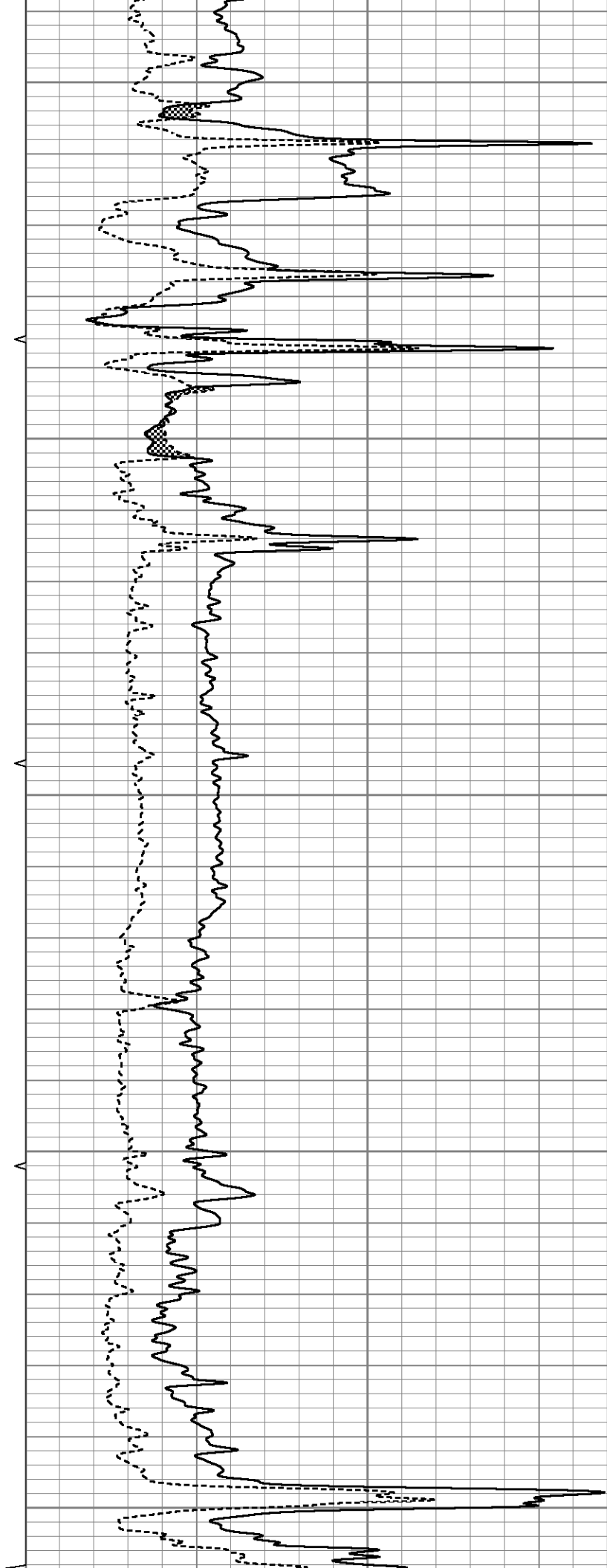
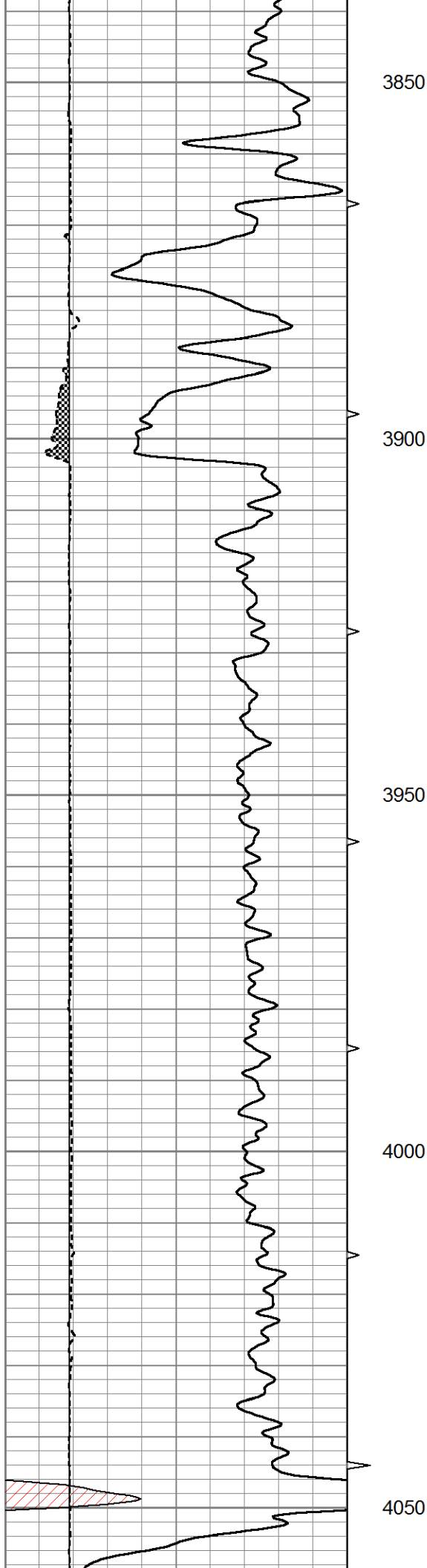
3650

3700

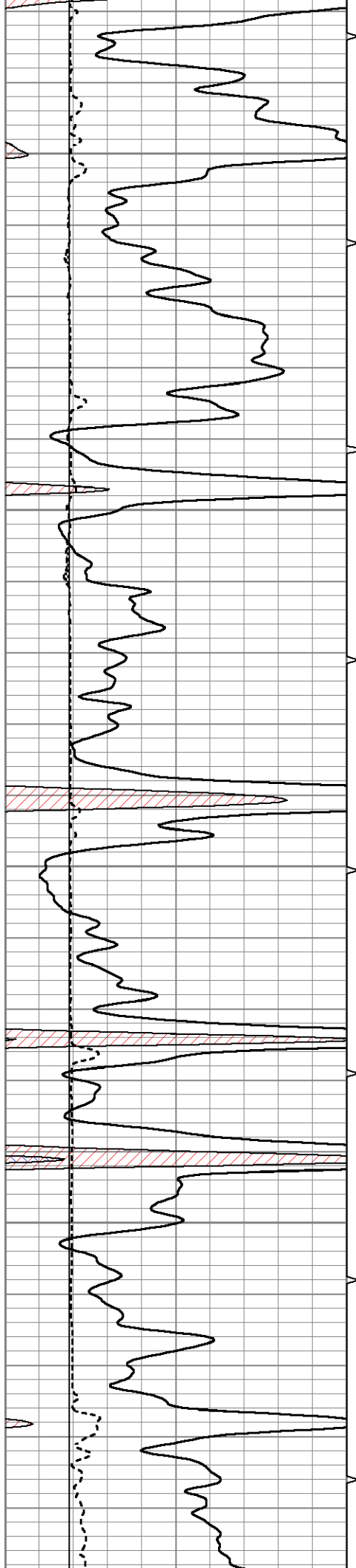
3750

3800







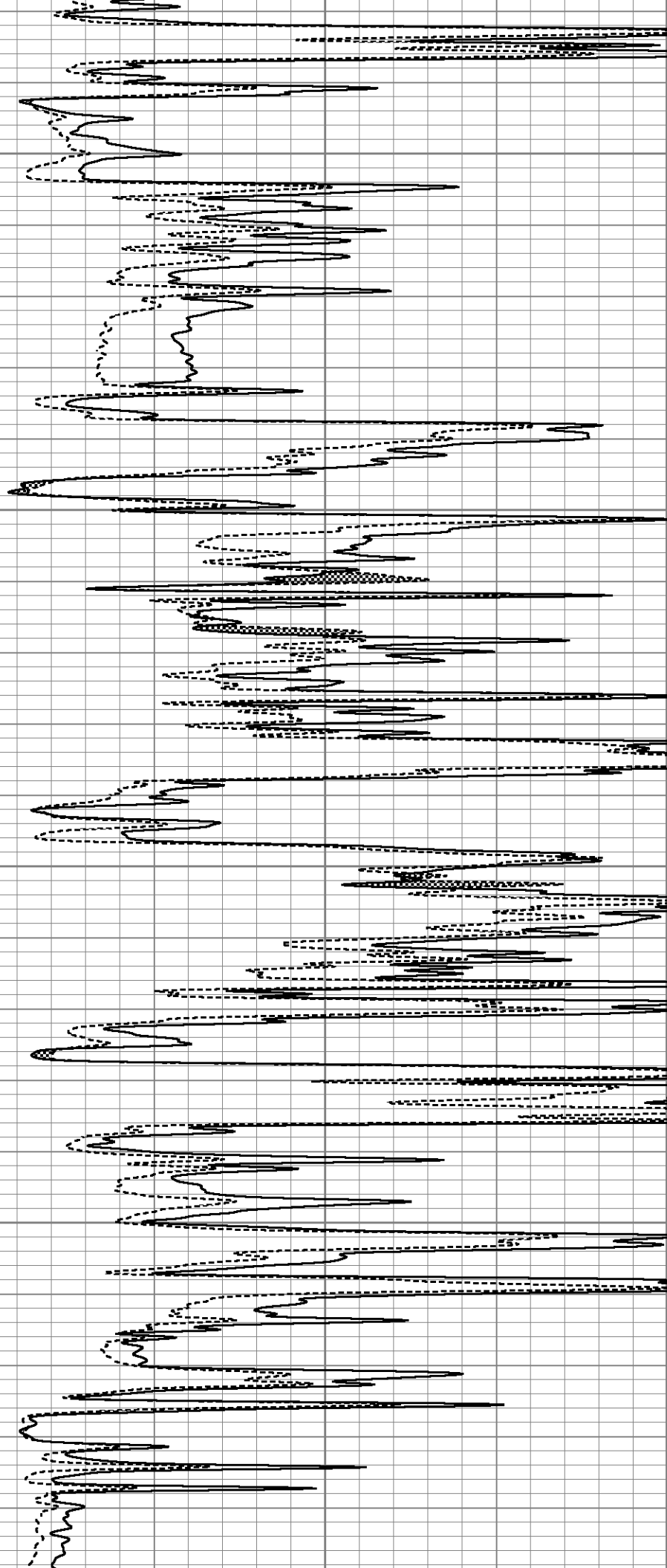


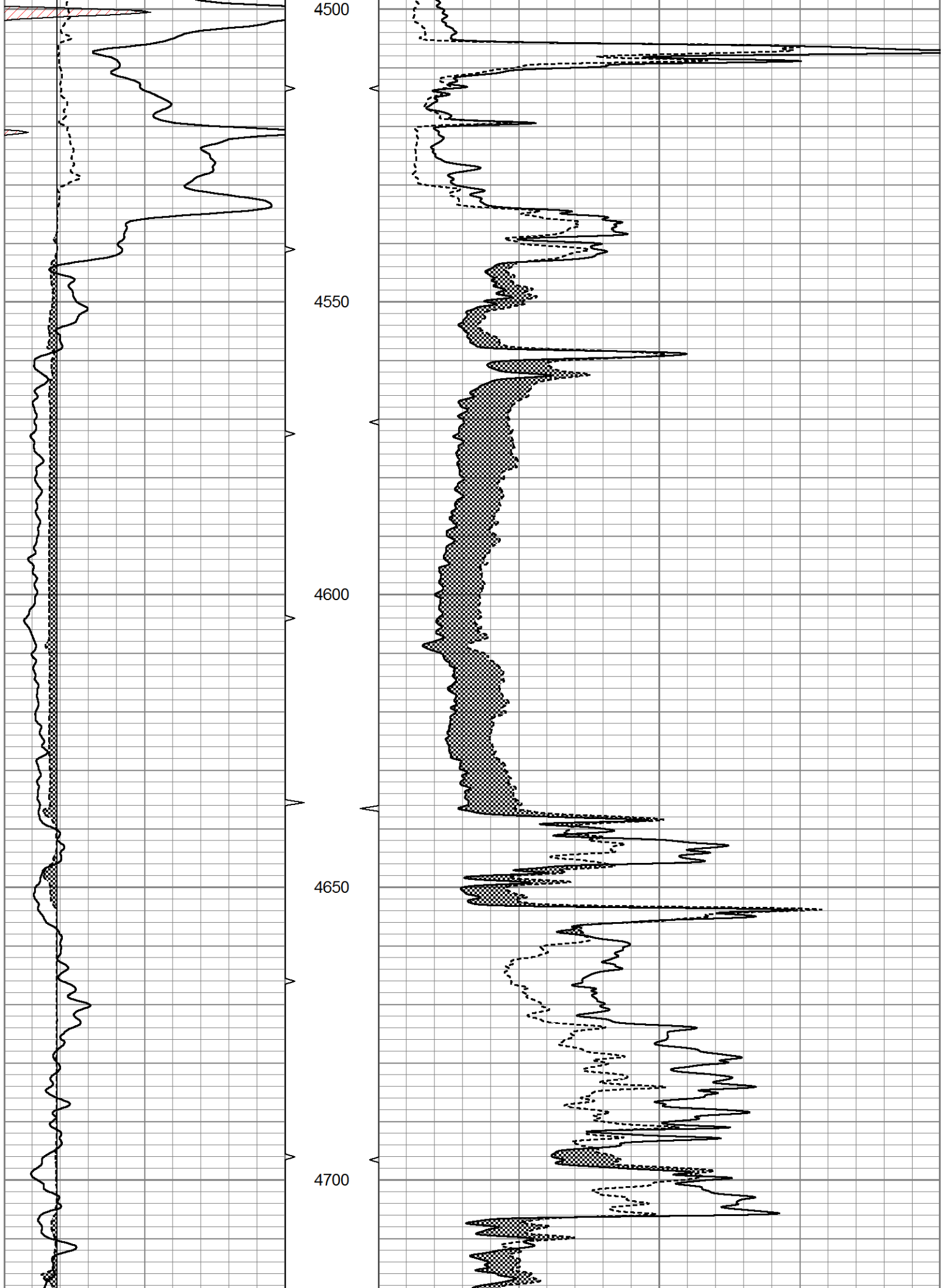
4300

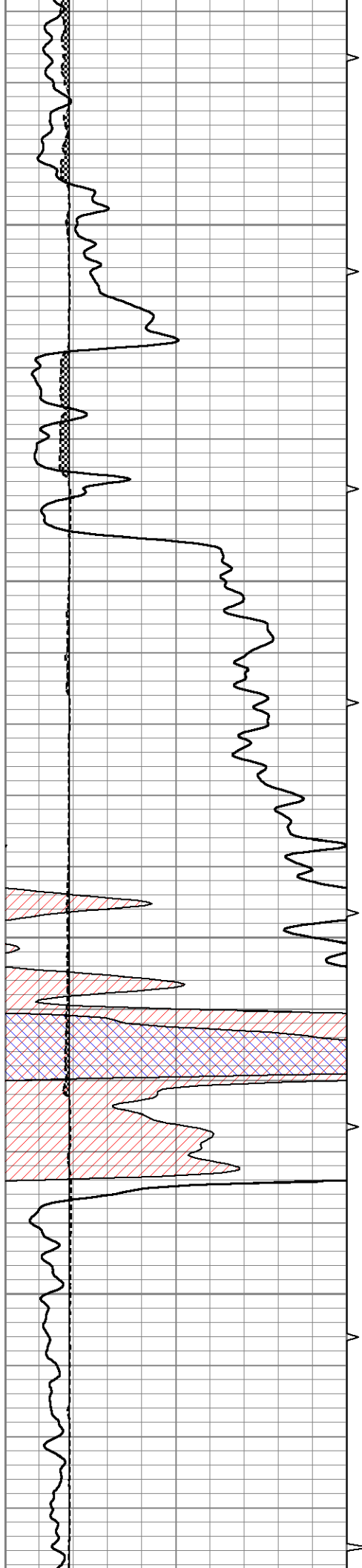
4350

4400

4450





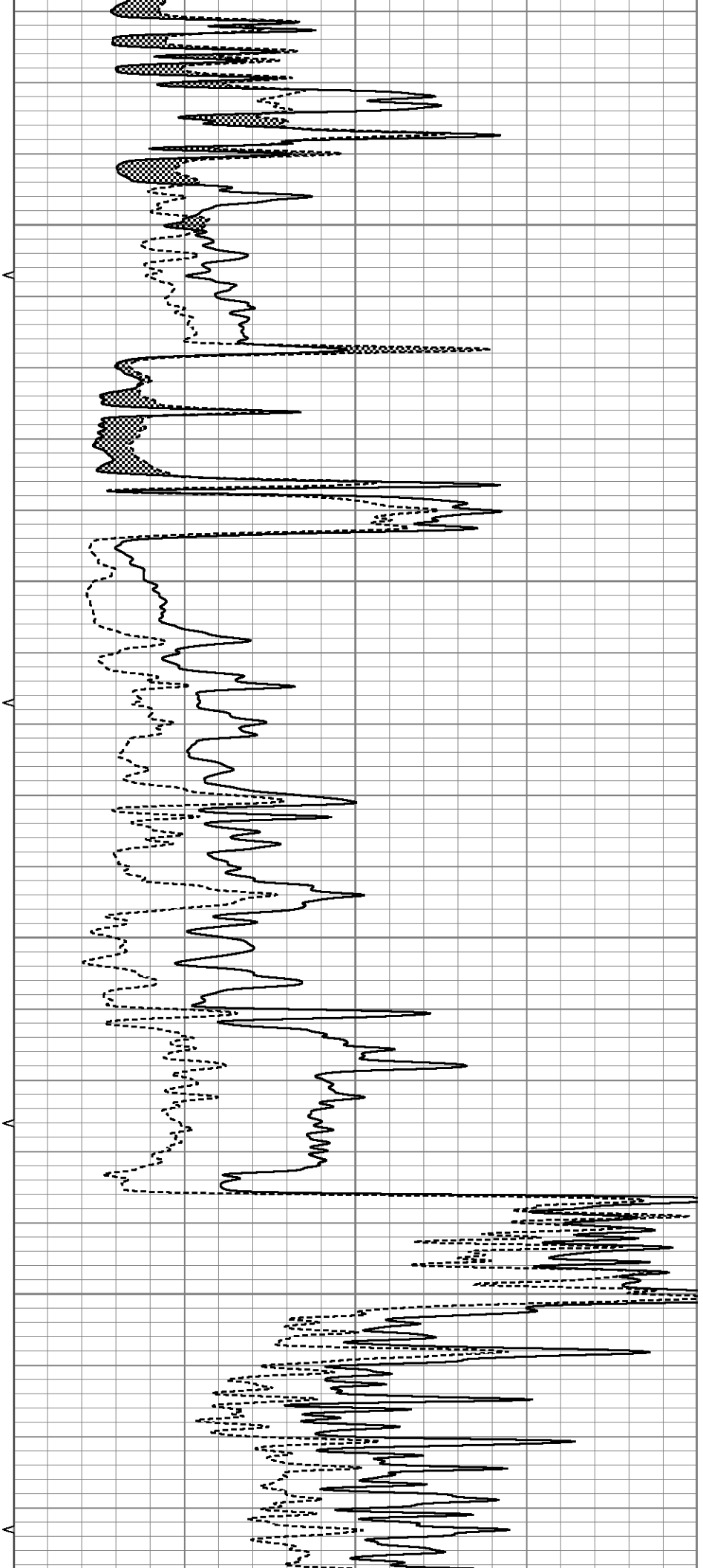


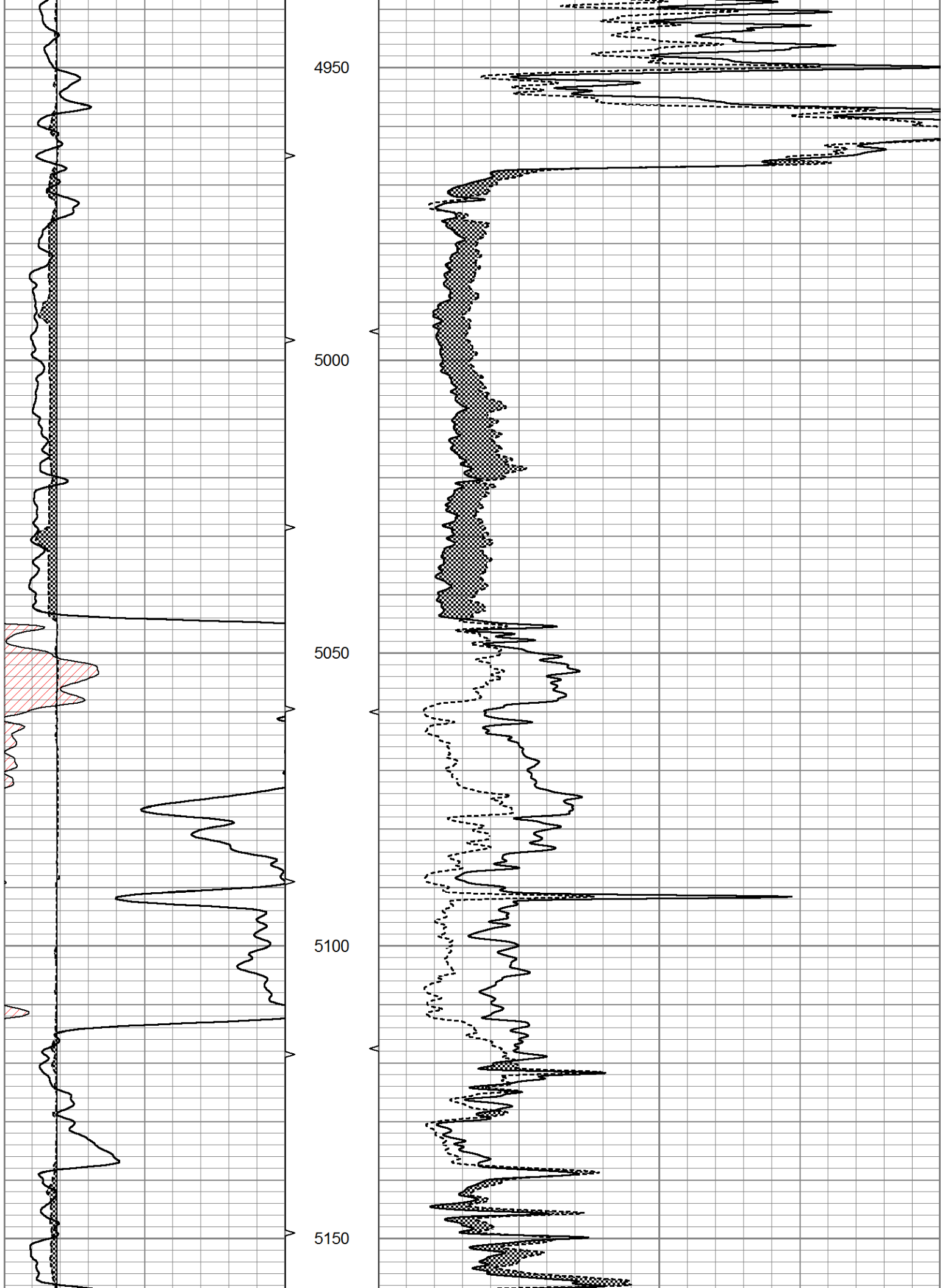
4750

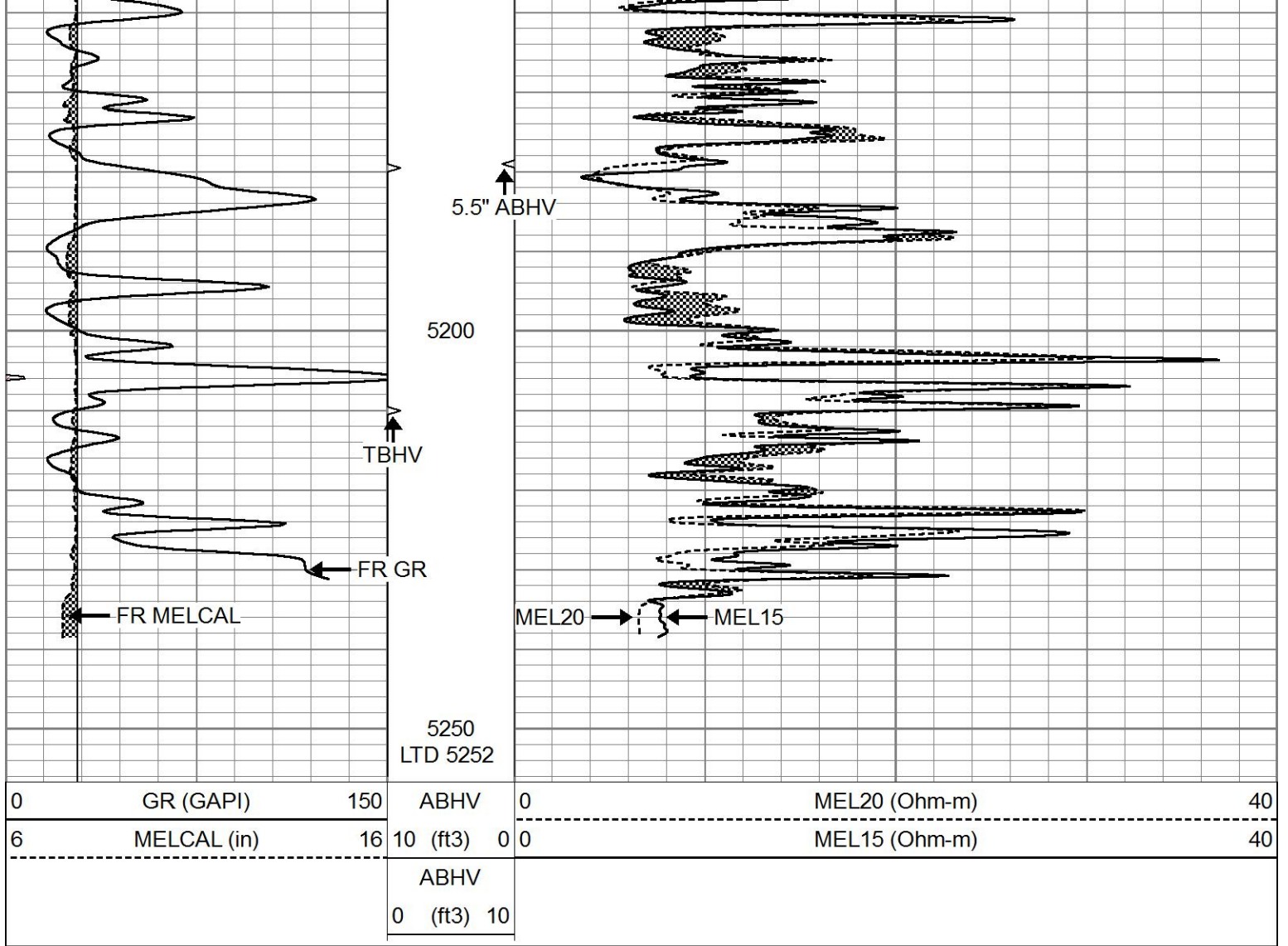
4800

4850

4900





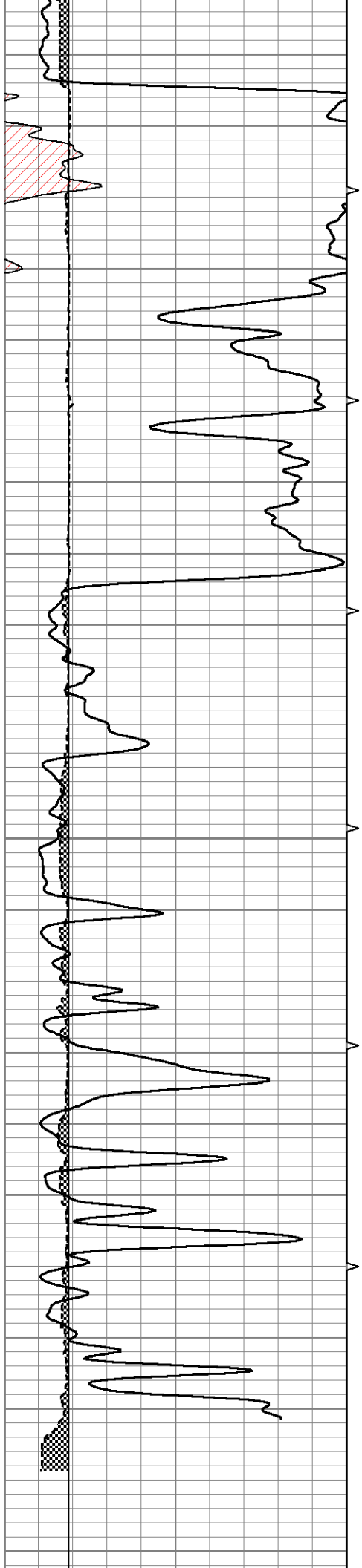


# REPEAT SECTION

Database File 6333pe.db  
 Dataset Pathname pass7.3  
 Presentation Format micro  
 Dataset Creation Thu Apr 21 23:47:26 2022  
 Charted by Depth in Feet scaled 1:240

0	GR (GAPI)	150	ABHV	0	MEL20 (Ohm-m)	40
6	MELCAL (in)	16	10 (ft3)	0 0	MEL15 (Ohm-m)	40
			ABHV			
			0 (ft3)	10		





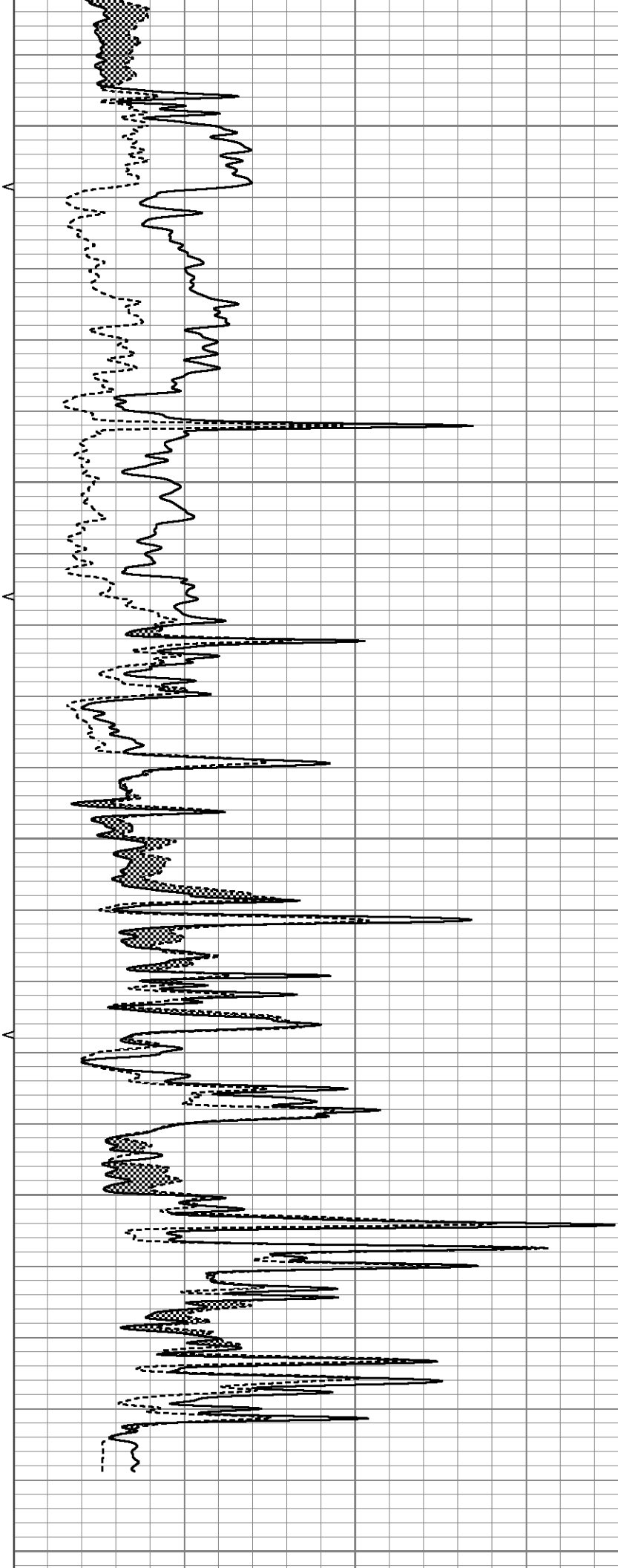
5050

5100

5150

5200

5250



0	GR (GAPI)	150	ABHV	0	MEL20 (Ohm-m)	40
6	MELCAL (in)	16	10 (ft3)	0	MEL15 (Ohm-m)	40
			ABHV			
			0 (ft3)	10		

### Calibration Report

Database File 6333pe.db  
Dataset Pathname pass8.3  
Dataset Creation Fri Apr 22 00:21:26 2022

#### MICRO Calibration Report

Serial Number: 070912  
Tool Model: ProbeN  
Performed: Tue Mar 22 21:24:03 2022

Caliper Calibration: Gain=3.404 Offset=0.681

	Low Cal	High Cal
References	8.000	16.000
Readings	2.150	4.500

1.5" Calibration: Gain=32.000 Offset=-2.000

	Low Cal	High Cal
References	0.000	20.000
Readings	0.002	1.239

2" Calibration: Gain=35.000 Offset=1.000

	Low Cal	High Cal
References	0.000	20.000
Readings	0.003	1.075

#### Gamma Ray Calibration Report

Serial Number: 070558  
Tool Model: OPEN\_GR  
Performed: Thu Apr 21 21:53:23 2022

Calibrator Value: 1.0 GAPI

Background Reading: 0.0 cps  
Calibrator Reading: 1.0 cps

Sensitivity: 0.3000 GAPI/cps