



DUAL INDUCTION LOG

Company BRISCOE PETROLEUM, LLC.

Well MILLIE #1

Field UNNAMED

County HARPER State KANSAS

Location: API #: 15-077-22189-0000
3290' FSL & 1895' FWL
NE - SW - SE - NW

SEC 6 TWP 34S RGE 9W

Permanent Datum GROUND LEVEL Elevation 1326

Log Measured From KELLY BUSHING 13' A.G.L.

Drilling Measured From KELLY BUSHING

Other Services
CNL/CDL/MEI
PE/SONIC

Elevation

K.B. 1339
D.F. 1337
G.L. 1326

Date	4/21/22
Run Number	ONE
Depth Driller	5250
Depth Logger	5252
Bottom Logged Interval	5250
Top Log Interval	00
Casing Driller	8 5/8"@226'
Casing Logger	223'
Bit Size	7 7/8"
Type Fluid in Hole	CHEMICAL MUD
Density / Viscosity	9.3/73
pH / Fluid Loss	10.5/8.0
Source of Sample	FLOWLINE
Rm @ Meas. Temp	.840@80F
Rmf @ Meas. Temp	.630@80F
Rmc @ Meas. Temp	1.01@80F
Source of Rmf / Rmc	MEASUREMENT
Rm @ BHT	.529@127F
Time Circulation Stopped	2.5 HOURS
Time Logger on Bottom	8:00 P.M.
Maximum Recorded Temperature	127F
Equipment Number	922339
Location	HAYS, KANSAS
Recorded By	JEFF LUEBBERS
Witnessed By	JEREMY SCHWARTZ
	COLE ROBBEN
	RICK BRISCOE

<<< Fold Here >>>

All interpretations are opinions based on inferences from electrical or other measurements and we cannot and do not guarantee the accuracy or correctness of any interpretation, and we shall not, except in the case of gross or willful negligence on our part, be liable or responsible for any loss, costs, damages, or expenses incurred or sustained by anyone resulting from any interpretation made by any of our officers, agents or employees. These interpretations are also subject to our general terms and conditions set out in our current Price Schedule.

15-077-22189-0000

Comments

THANK YOU FOR USING ELI WIRELINE HAYS, KANSAS (785) 628-6395
DIRECTIONS
HAZELTON, KS. E 2.4 ON MAIN ST/SE CORWIN, N 1/4 ON SE CORWIN, E 1 MI,
N 1 MI ON HARPER RD. NE 3/4 ON LEASE RD.

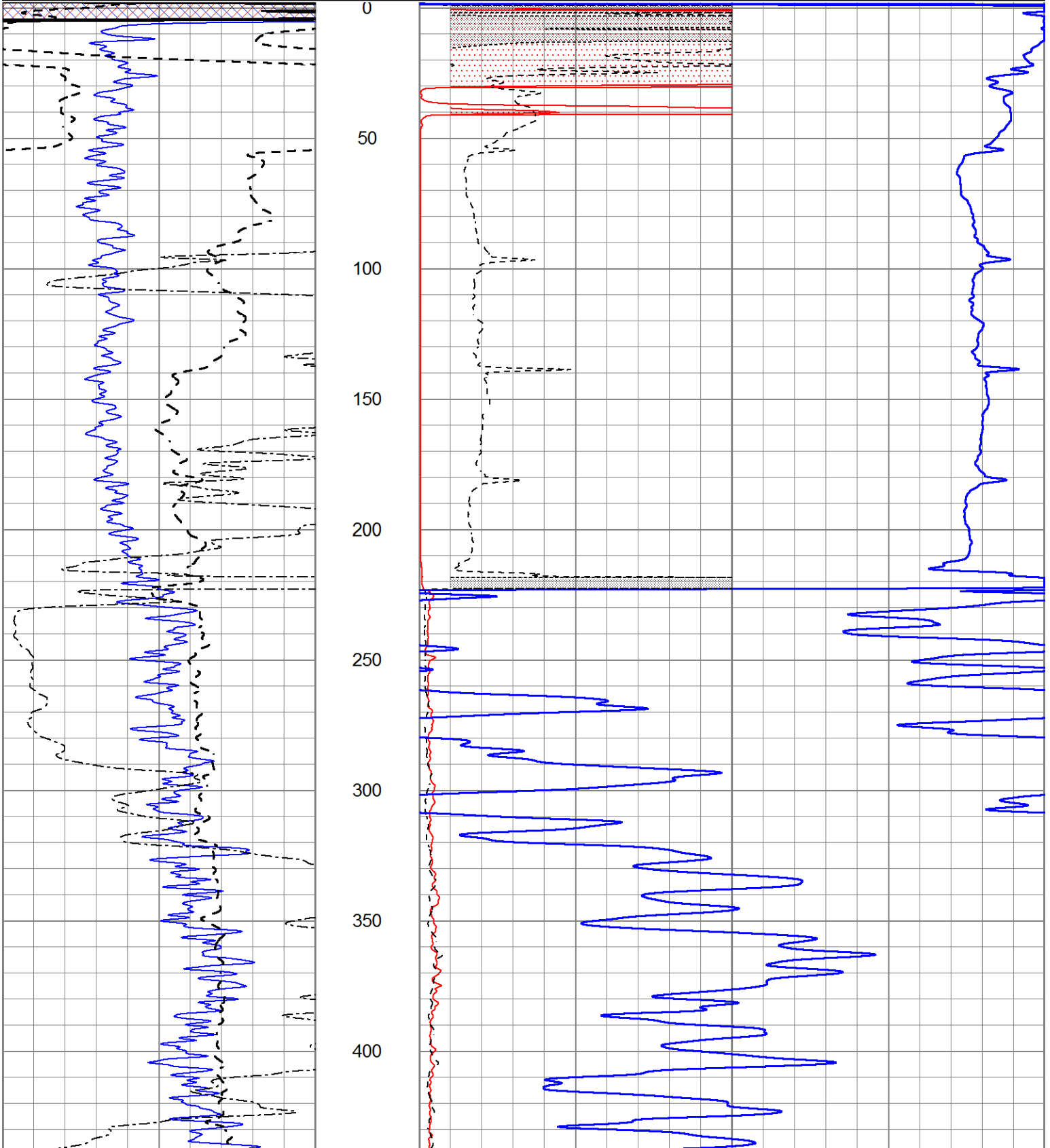


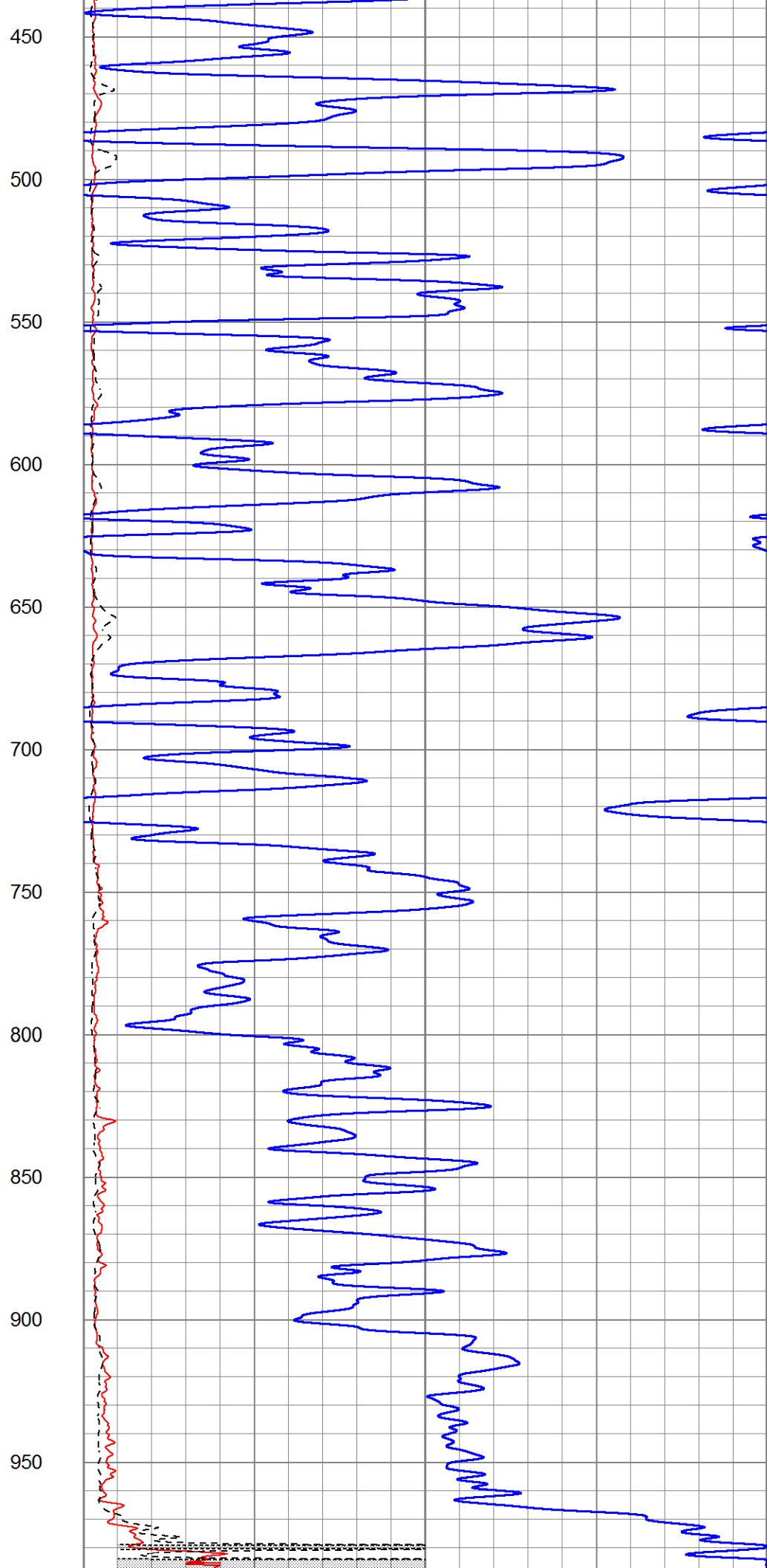
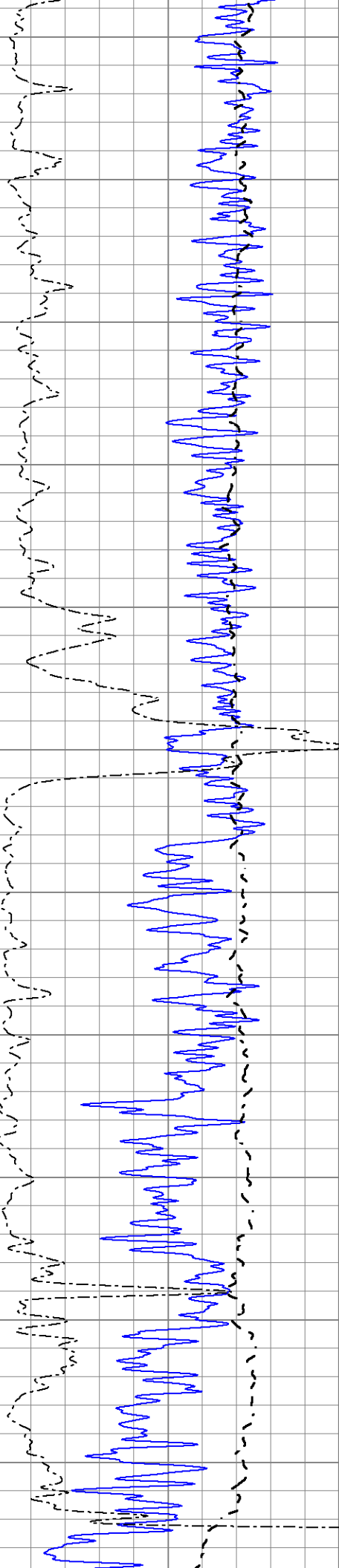
MAIN SECTION

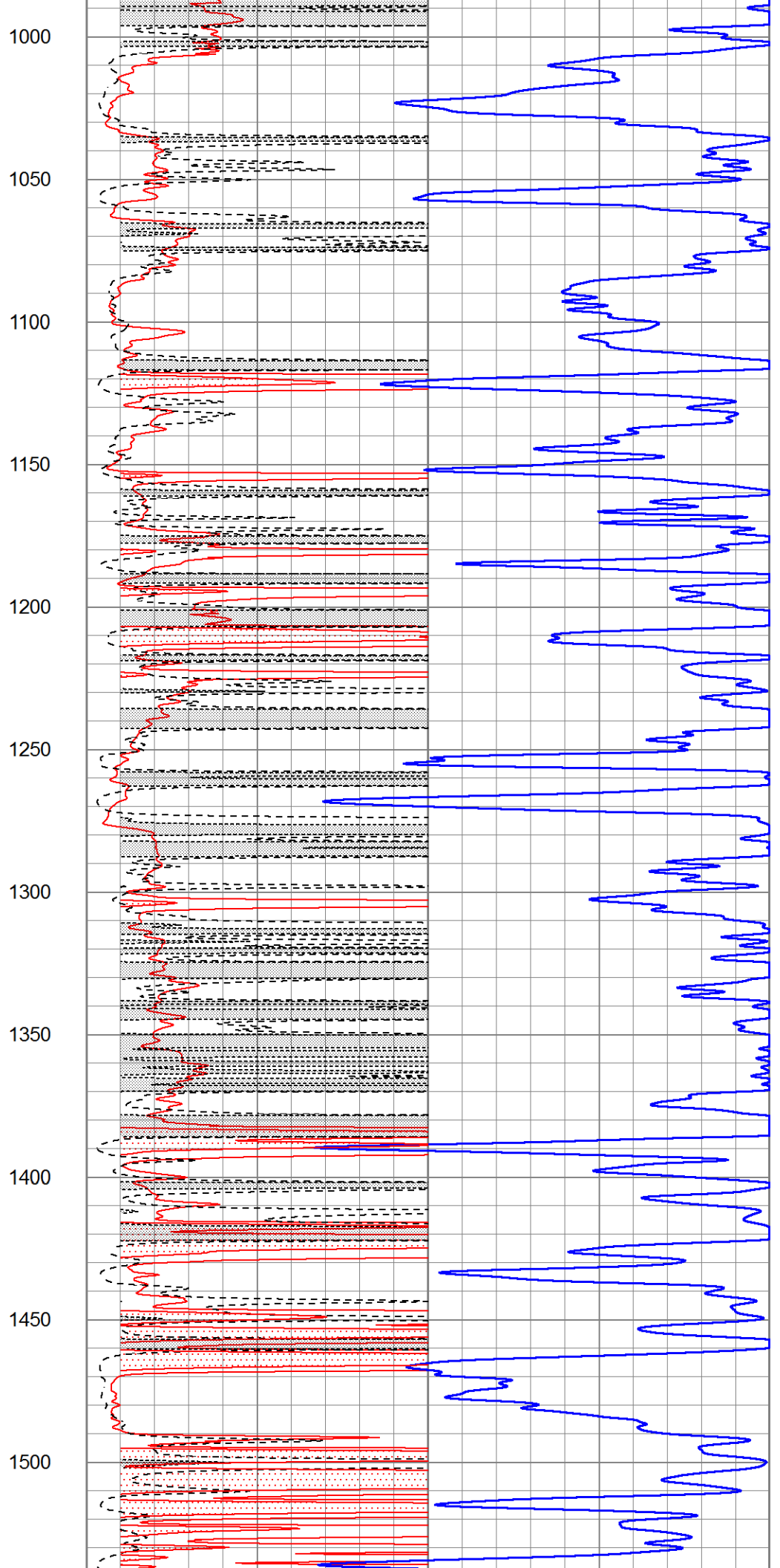
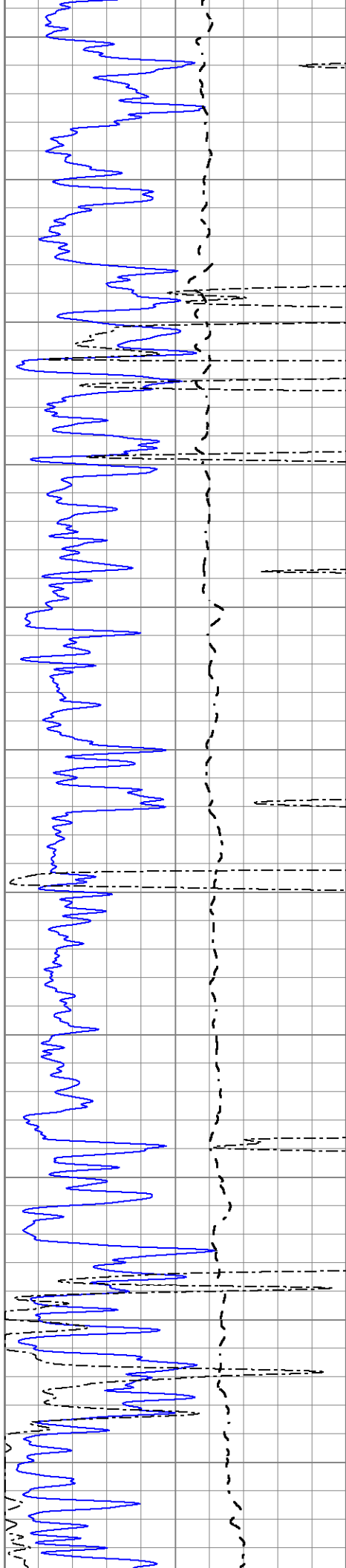
Database File 6333pe.db
 Dataset Pathname pass3.1M
 Presentation Format _dil2
 Dataset Creation Thu Apr 21 22:50:53 2022
 Charted by Depth in Feet scaled 1:600

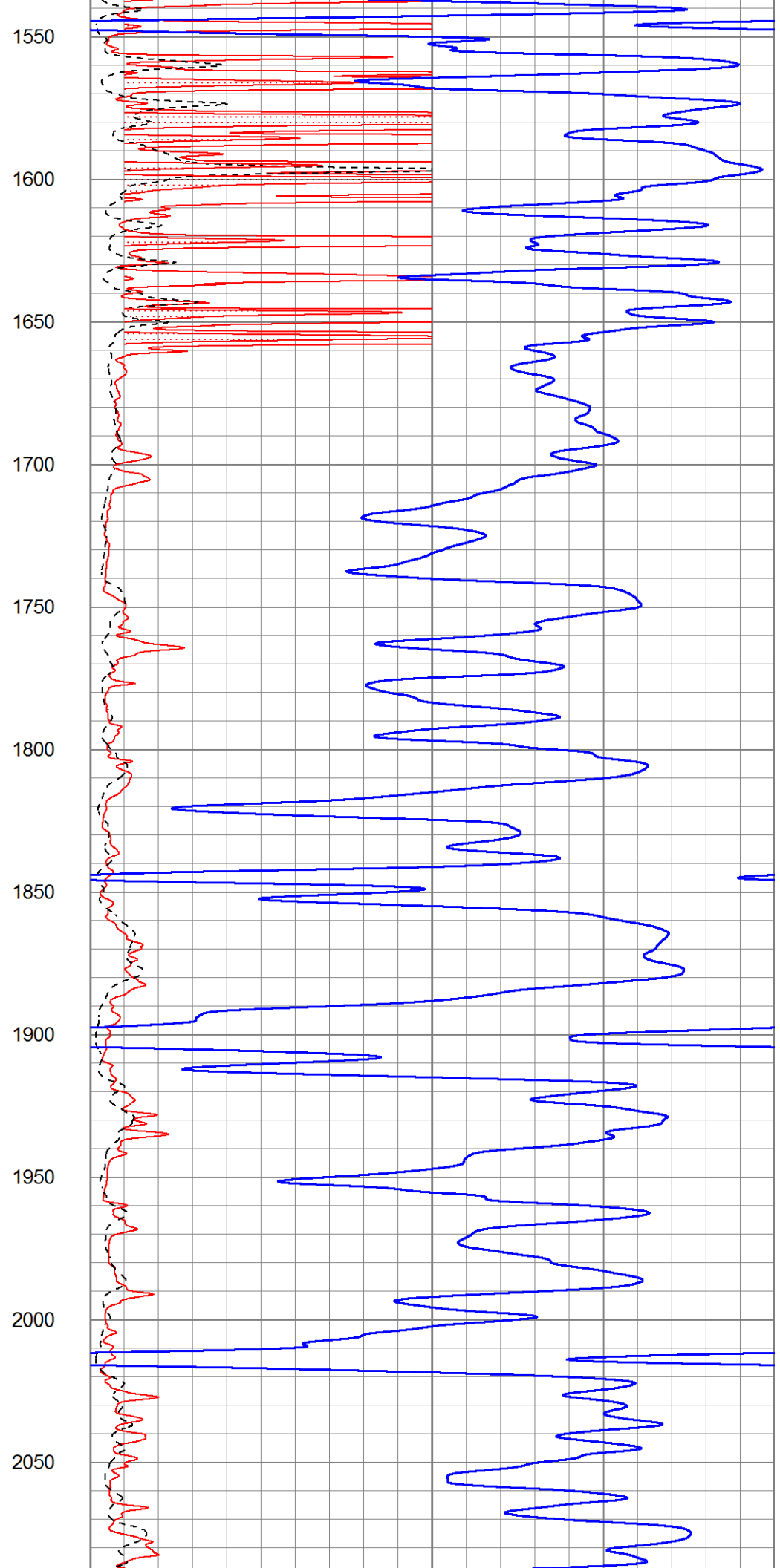
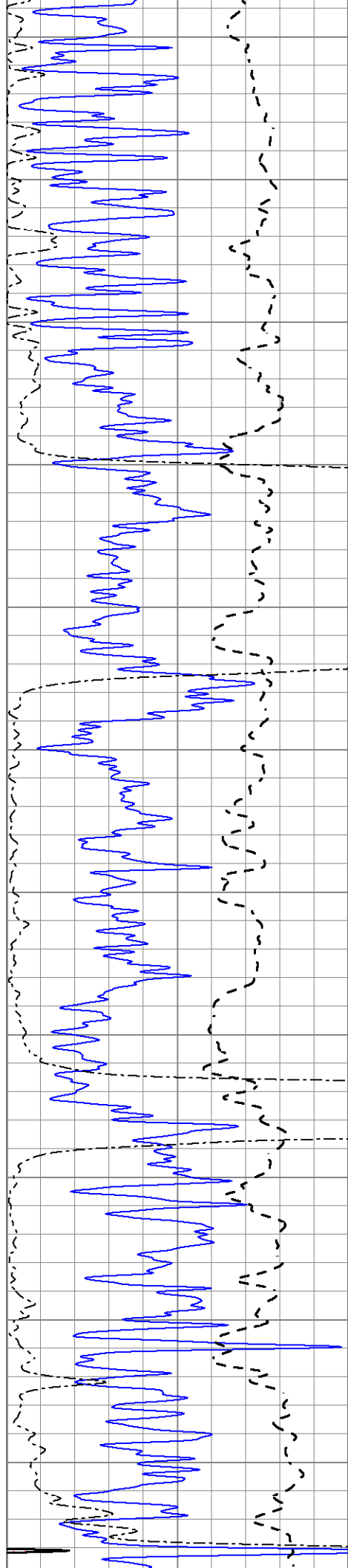
0	Gamma Ray (GAPI)	150
-100	SP (mV)	100
0	RWA (Ohm-m)	1

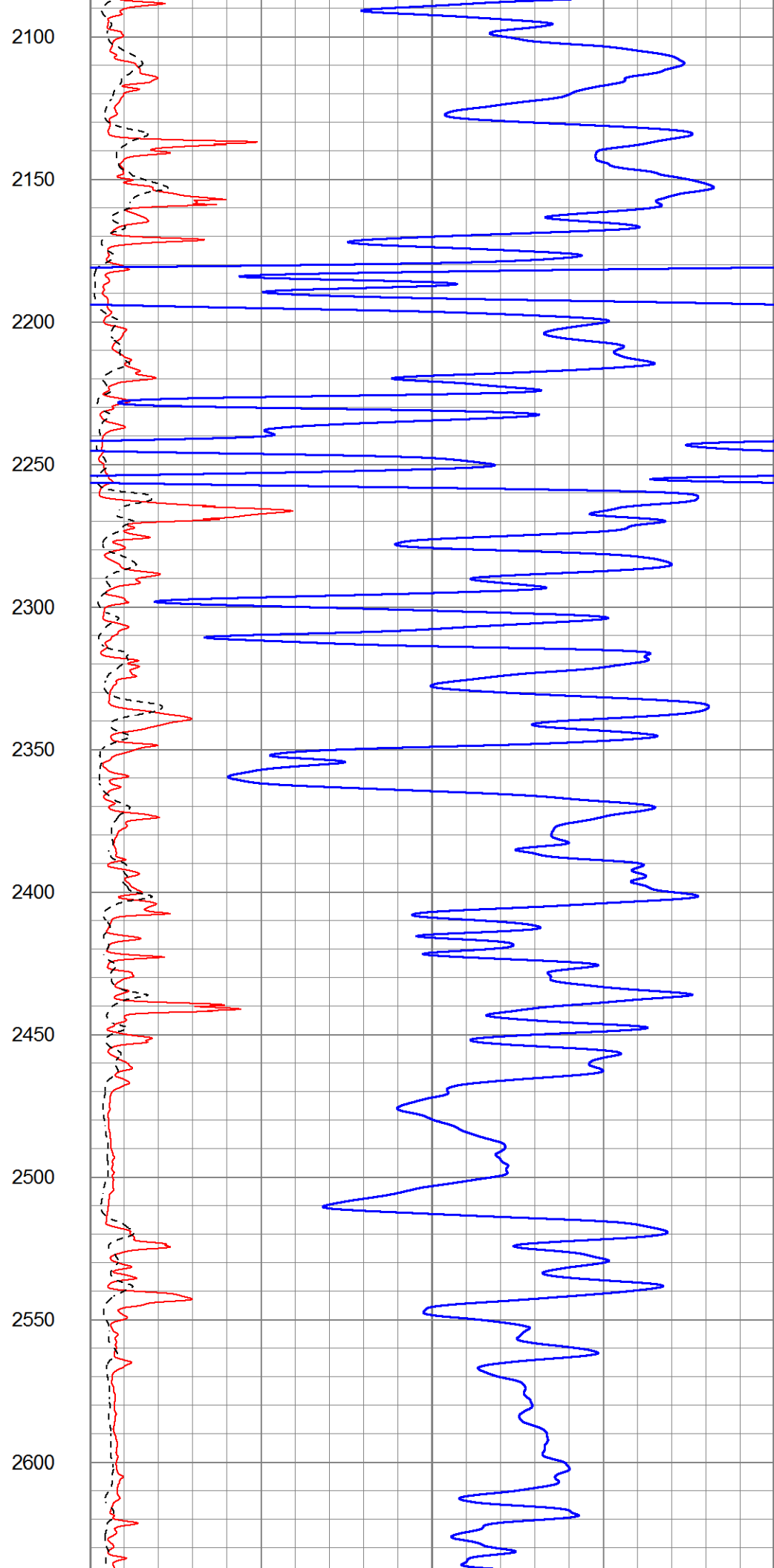
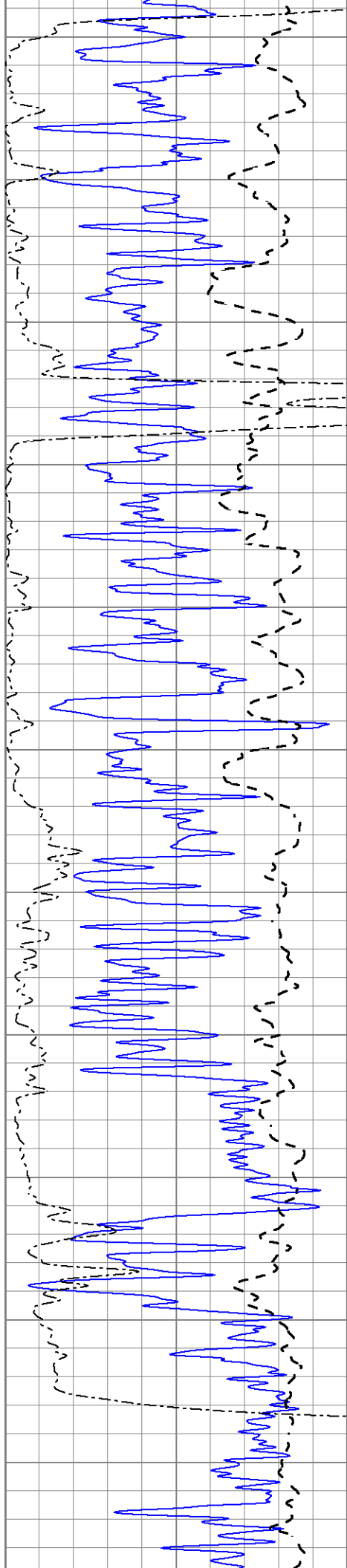
1000	CILD (mmho/m)	0
0	RLL3 (Ohm-m)	50
0	RILD (Ohm-m)	50
50	RILD X10 (Ohm-m)	500
50	RLL3 X10 (Ohm-m)	500

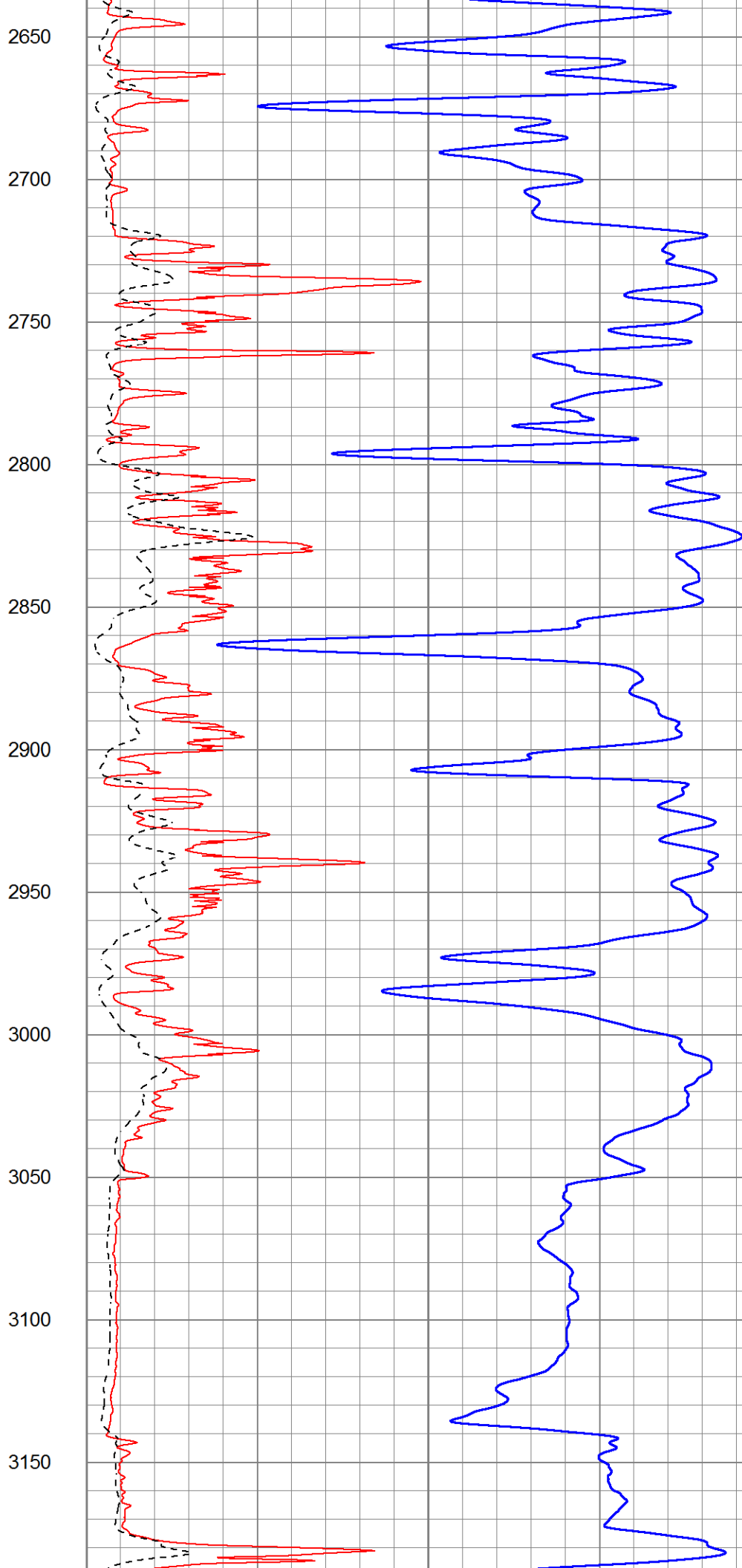
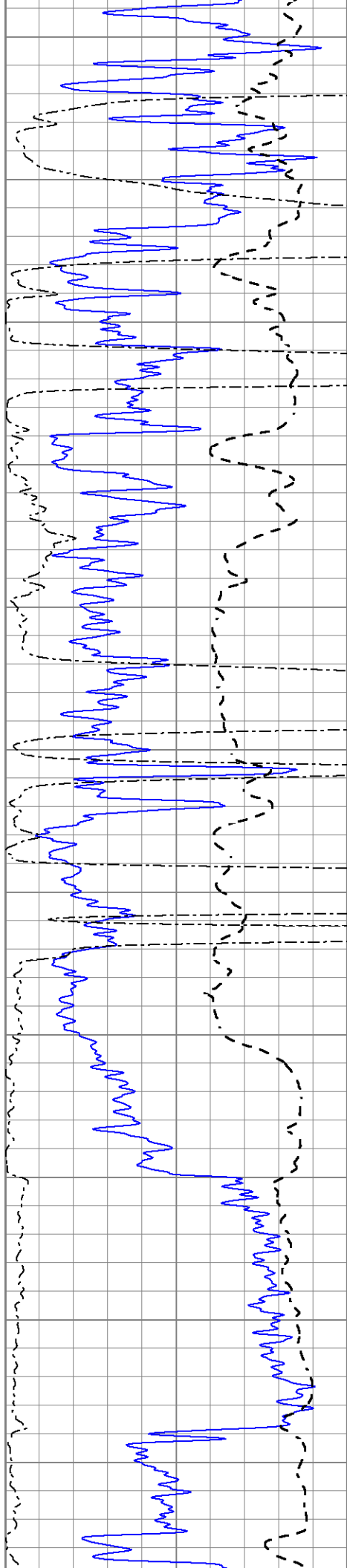


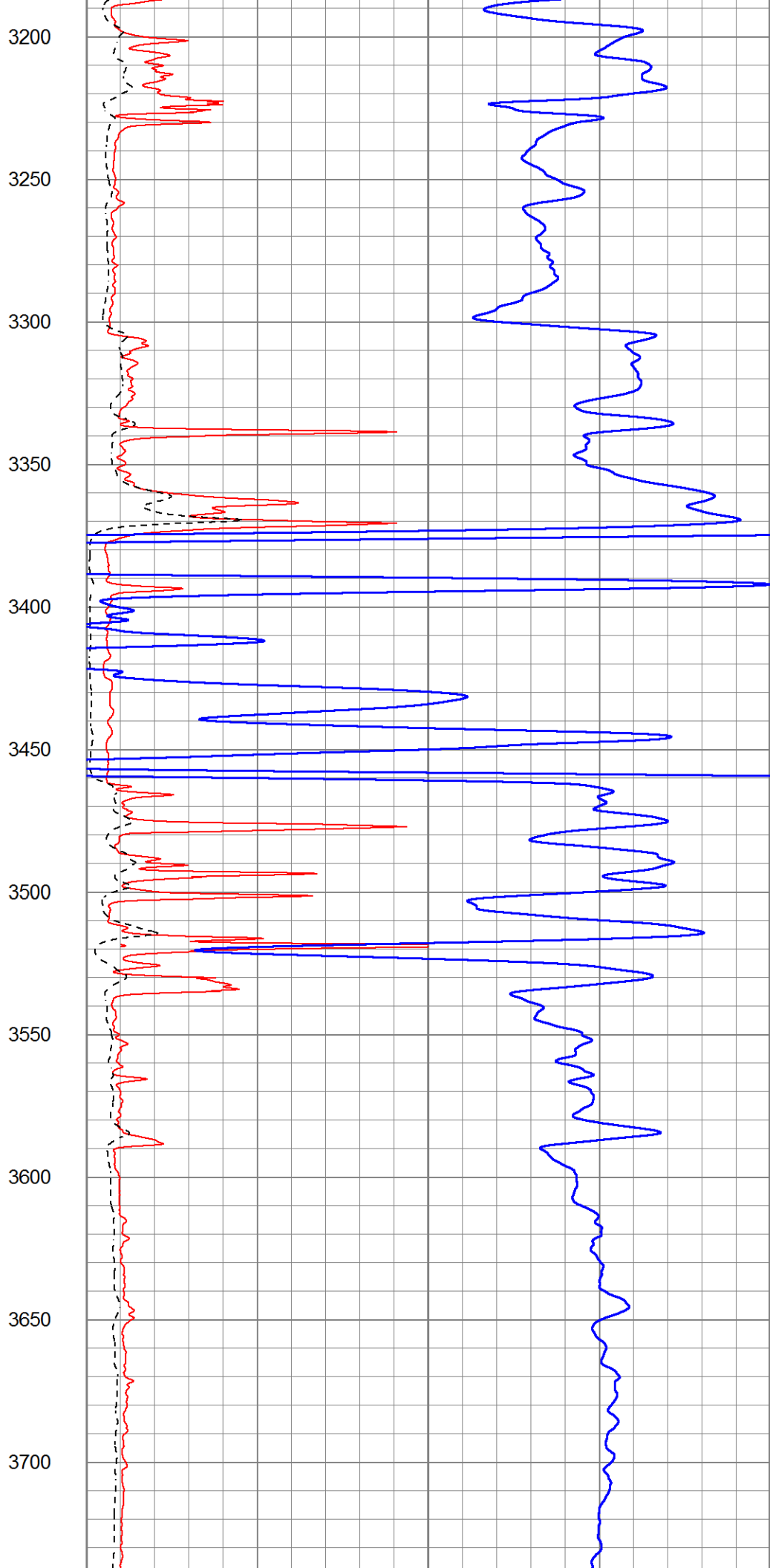
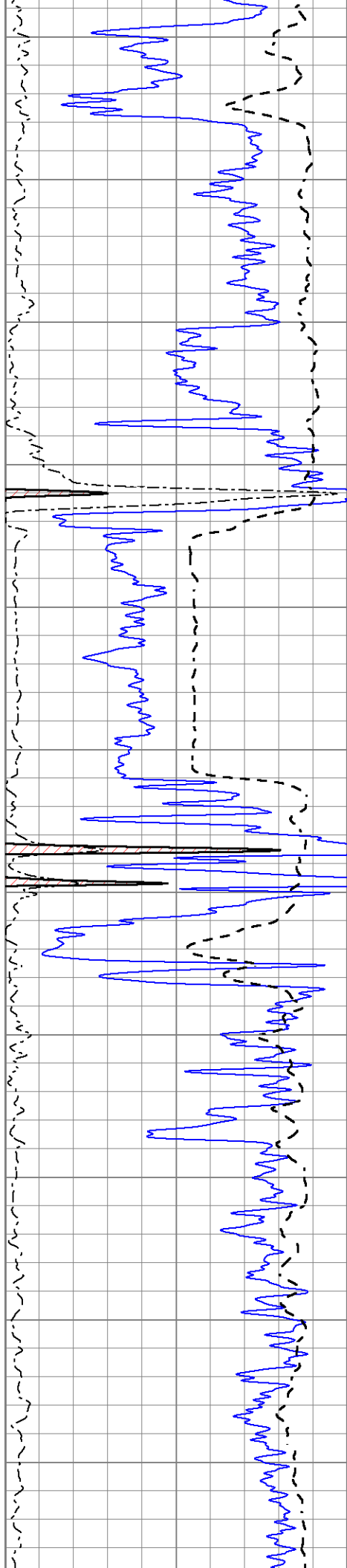


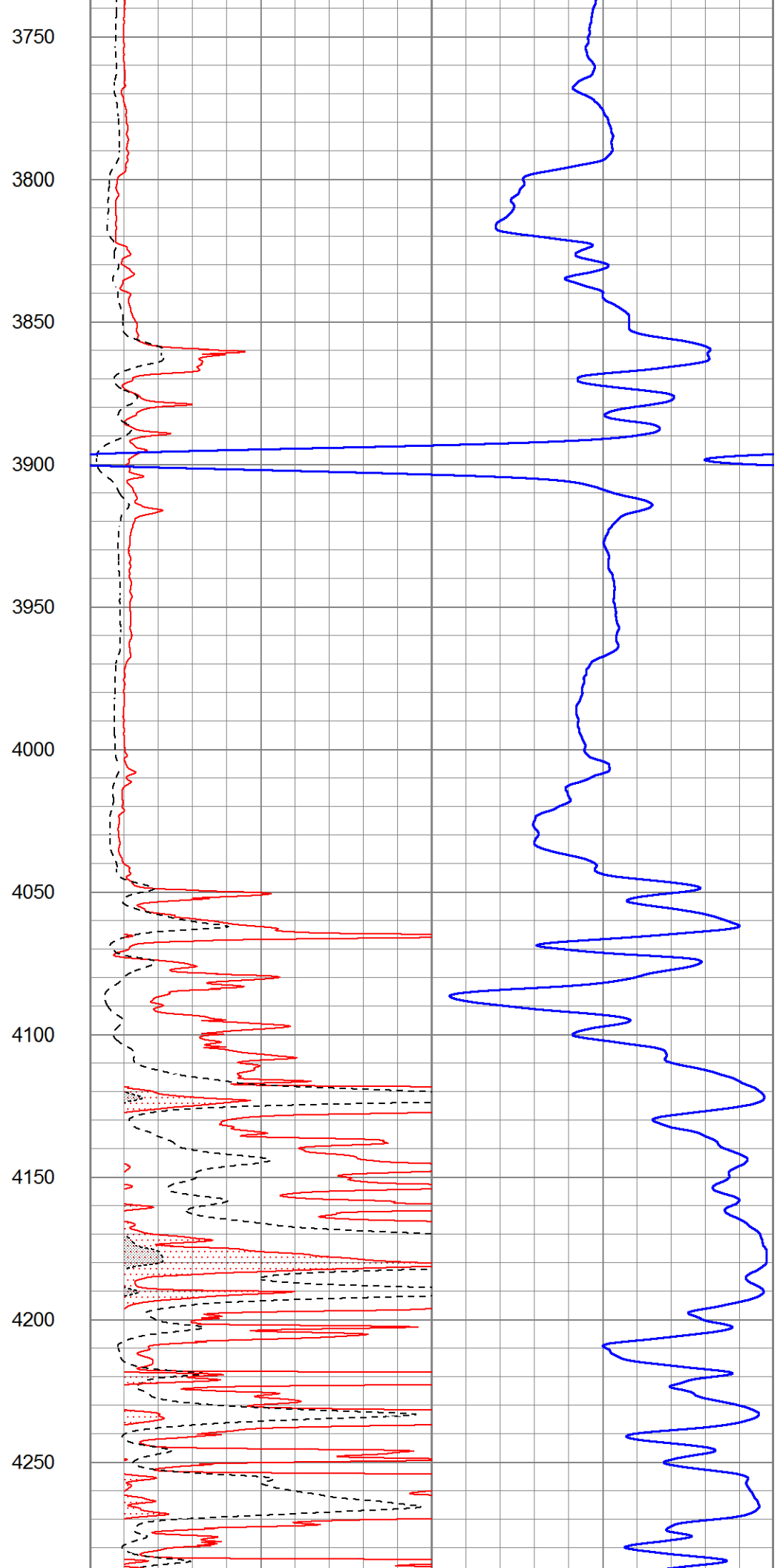
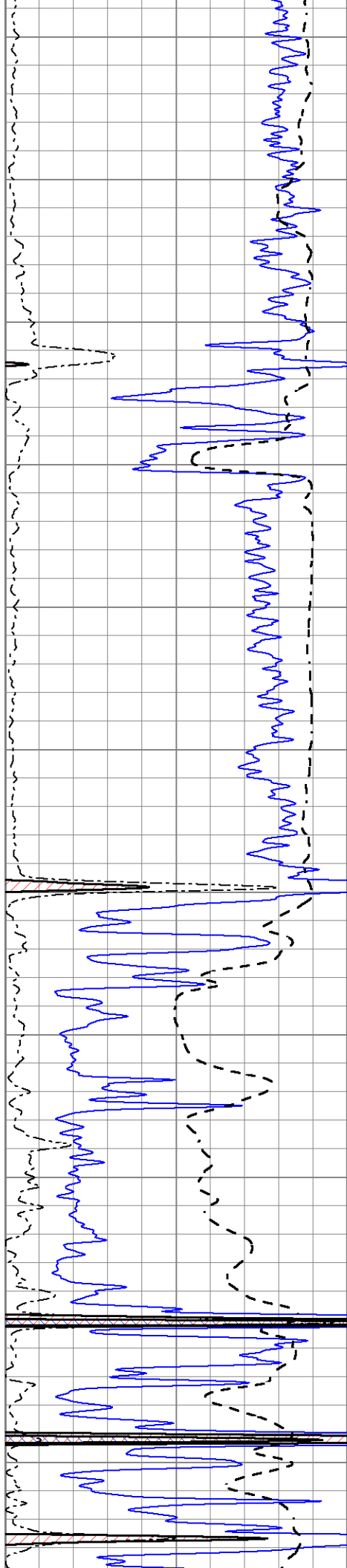


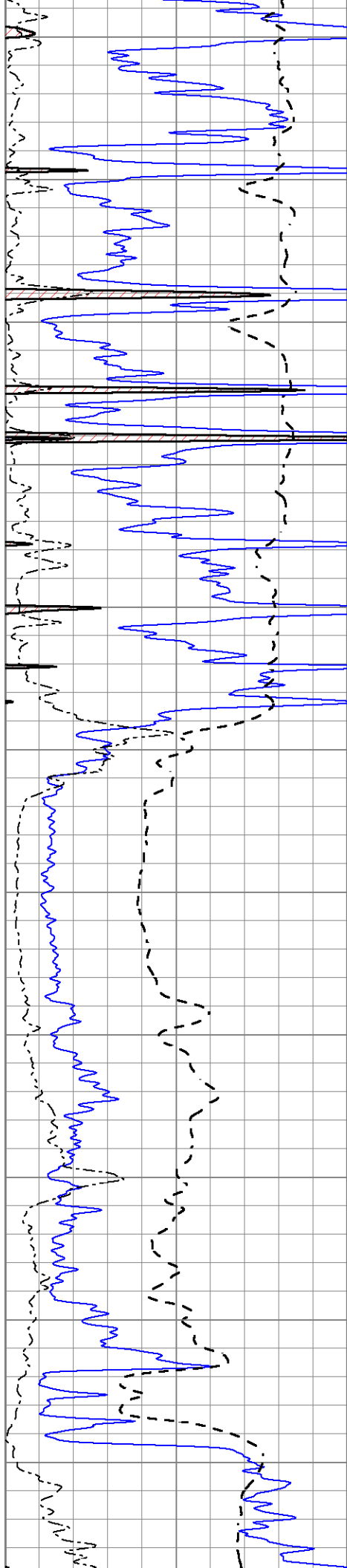












4300

4350

4400

4450

4500

4550

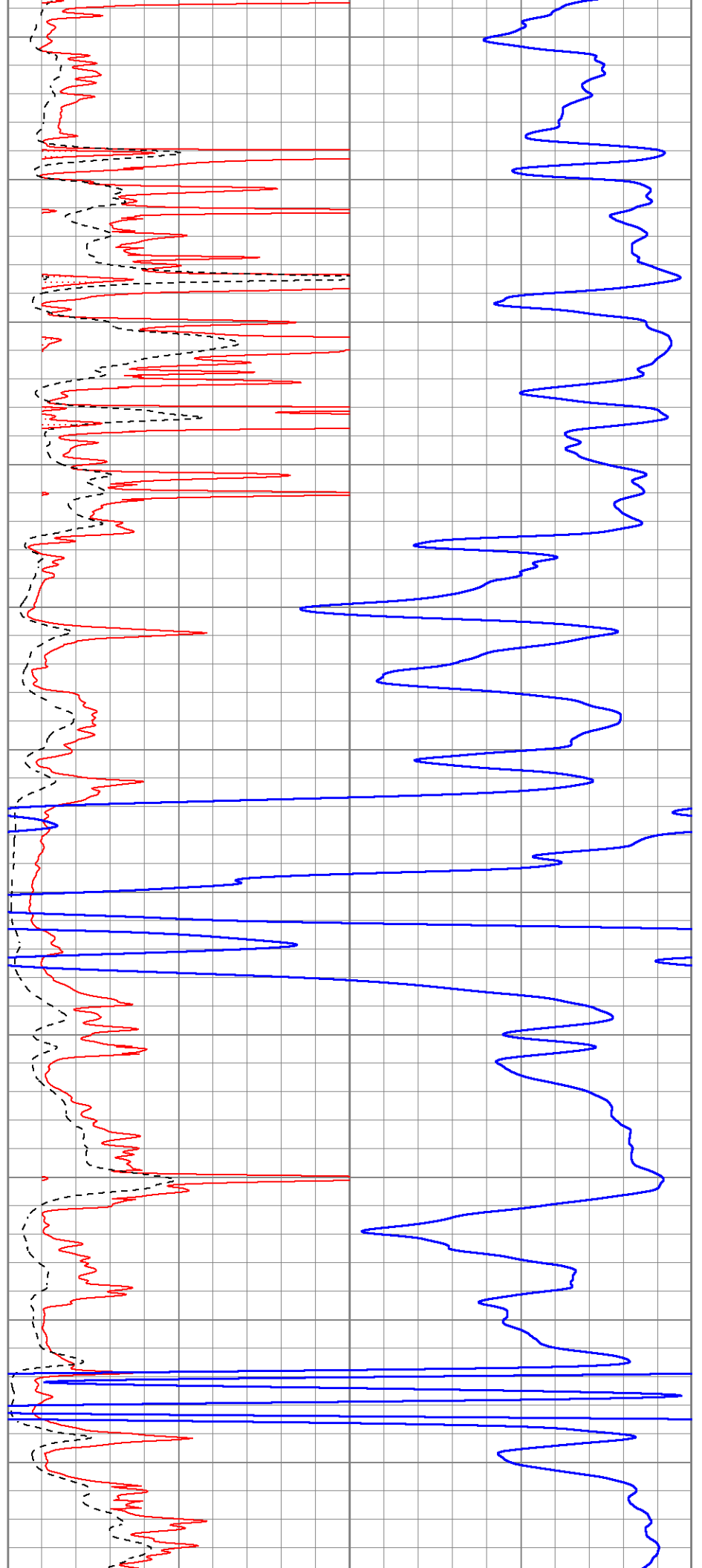
4600

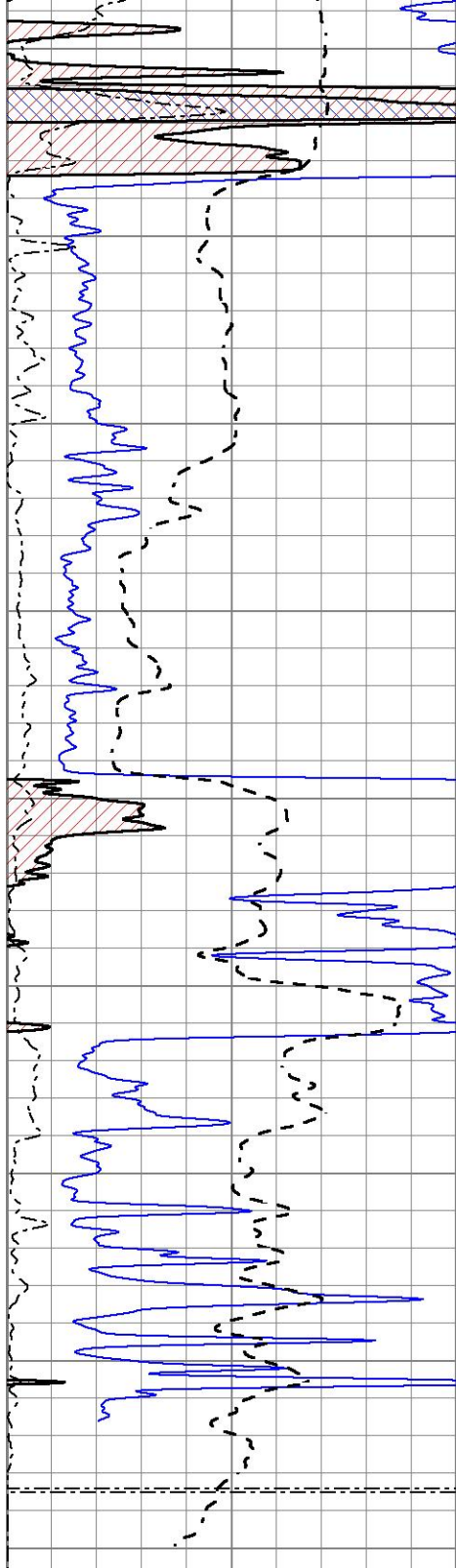
4650

4700

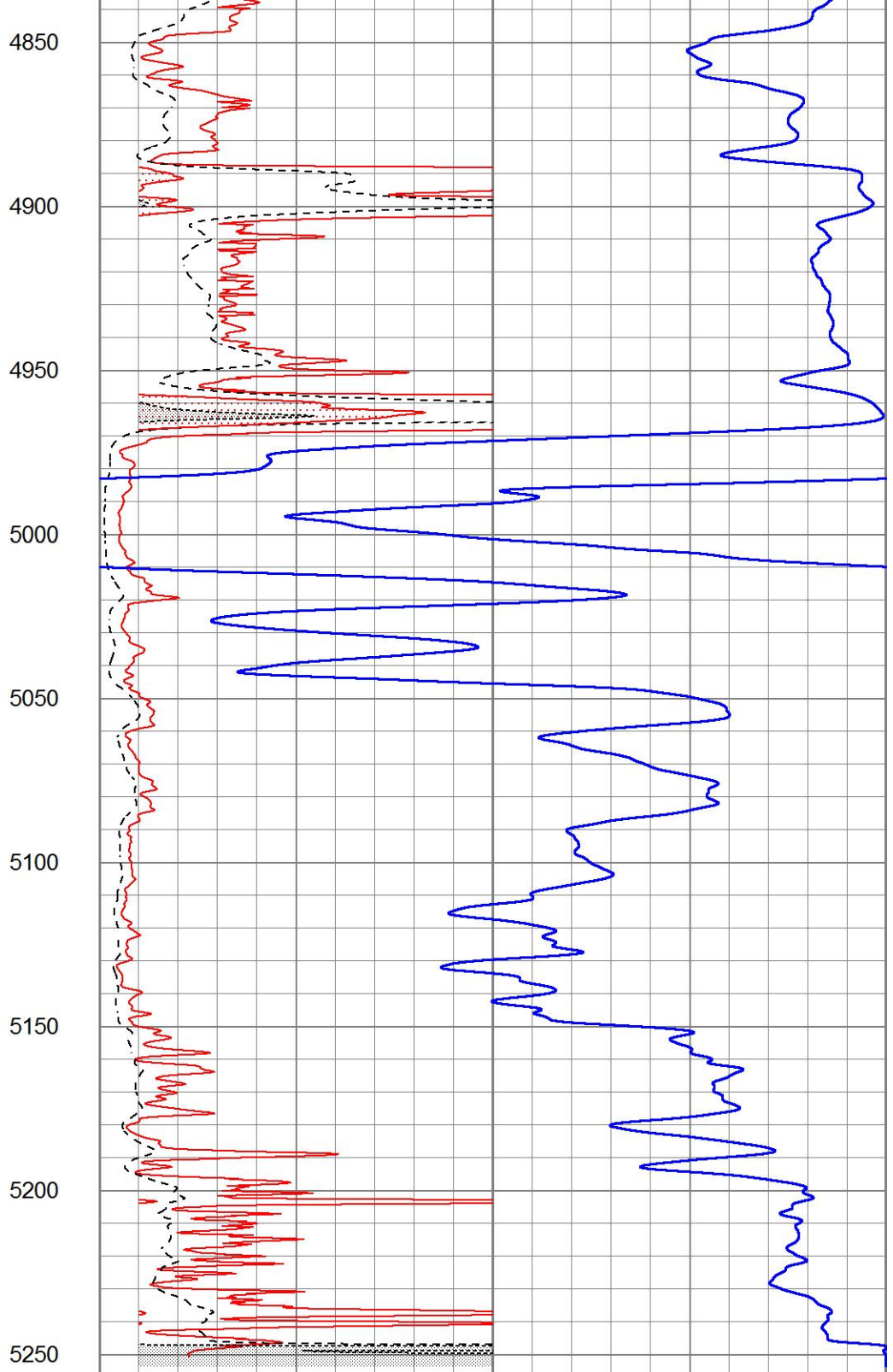
4750

4800





0	Gamma Ray (GAPI)	150
-100	SP (mV)	100
0	RWA (Ohm-m)	1



1000	CILD (mmho/m)	0
0	RLL3 (Ohm-m)	50
0	RILD (Ohm-m)	50
50	RILD X10 (Ohm-m)	500
50	RLL3 X10 (Ohm-m)	500

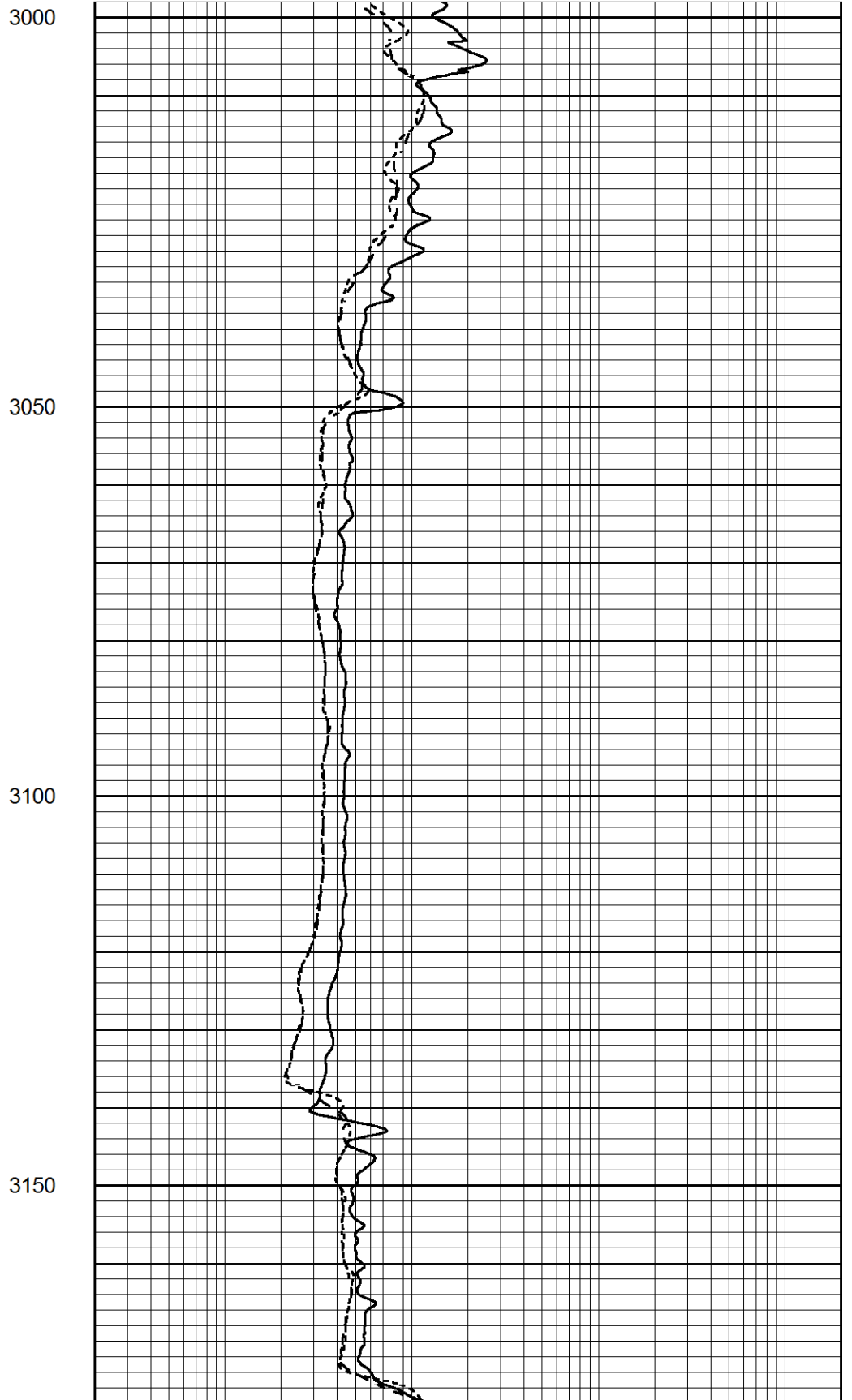


MAIN SECTION

Database File 6333pe.db
 Dataset Pathname pass3.1M
 Presentation Format _dil
 Dataset Creation Thu Apr 21 22:50:53 2022
 Charted by Depth in Feet scaled 1:240

0	GAMMA RAY (GAPI)	150
-100	SP (mV)	100
-250	Rxo/Rt	50
0	MINMK	20

0.2	SHALLOW GUARD (Ohm-m)	2000
0.2	DEEP INDUCTION (Ohm-m)	2000
0.2	MEDIUM INDUCTION (Ohm-m)	2000



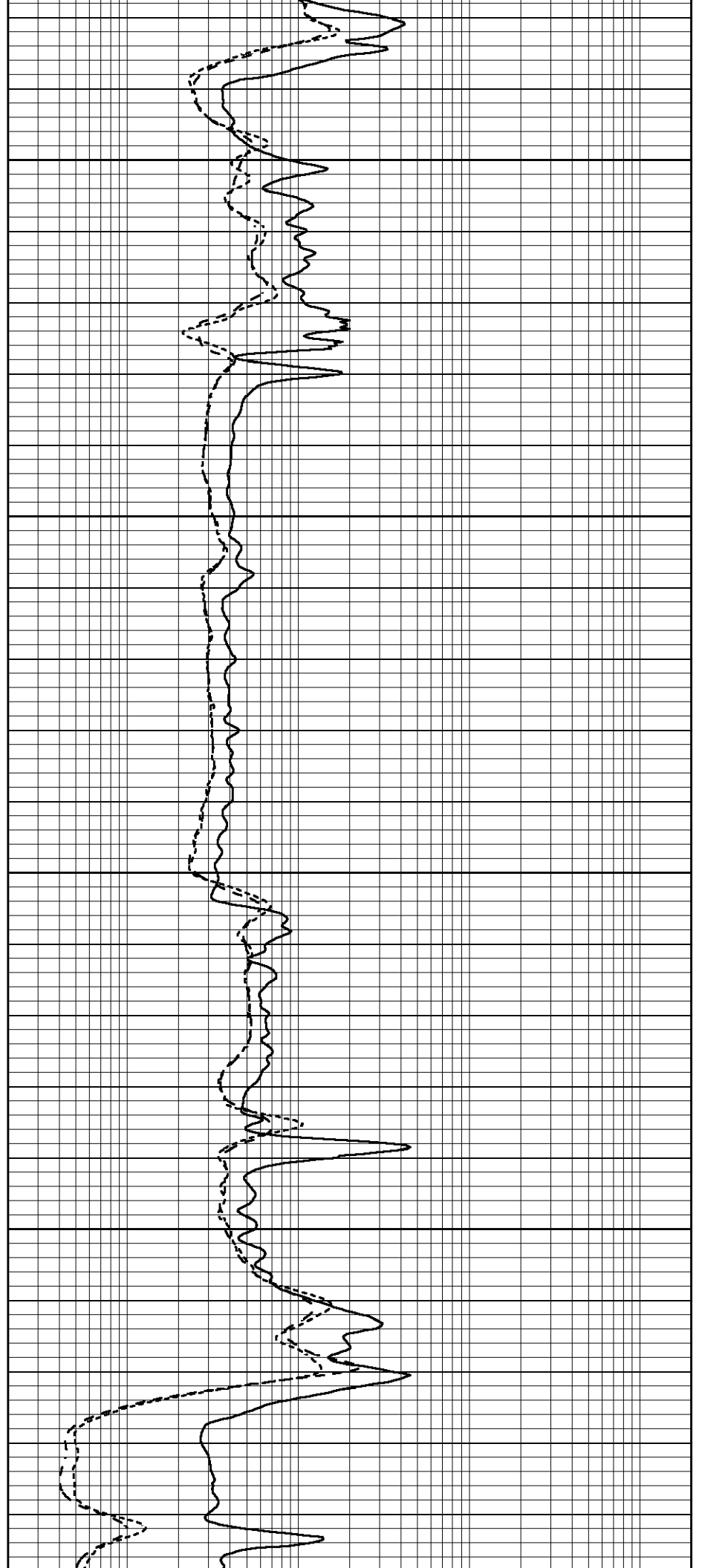


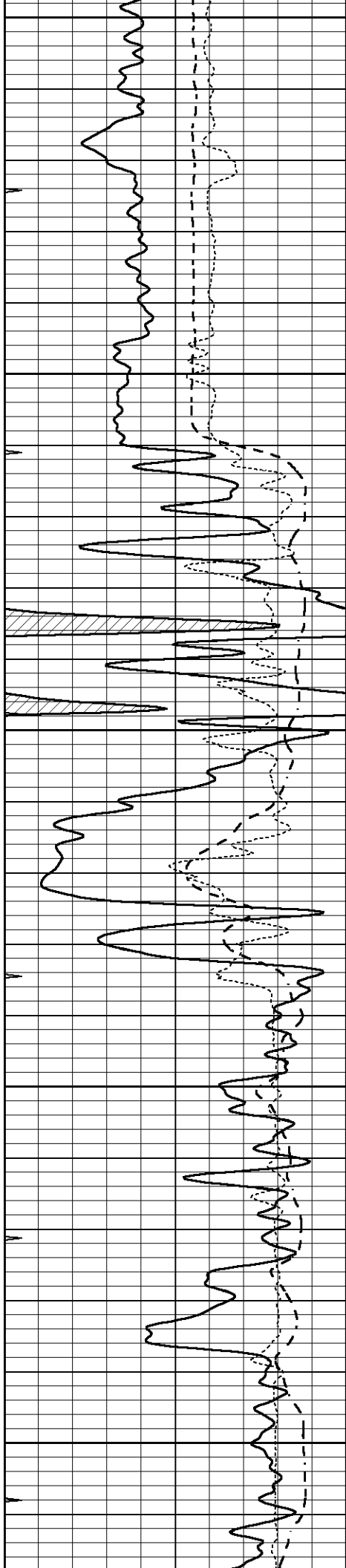
3200

3250

3300

3350





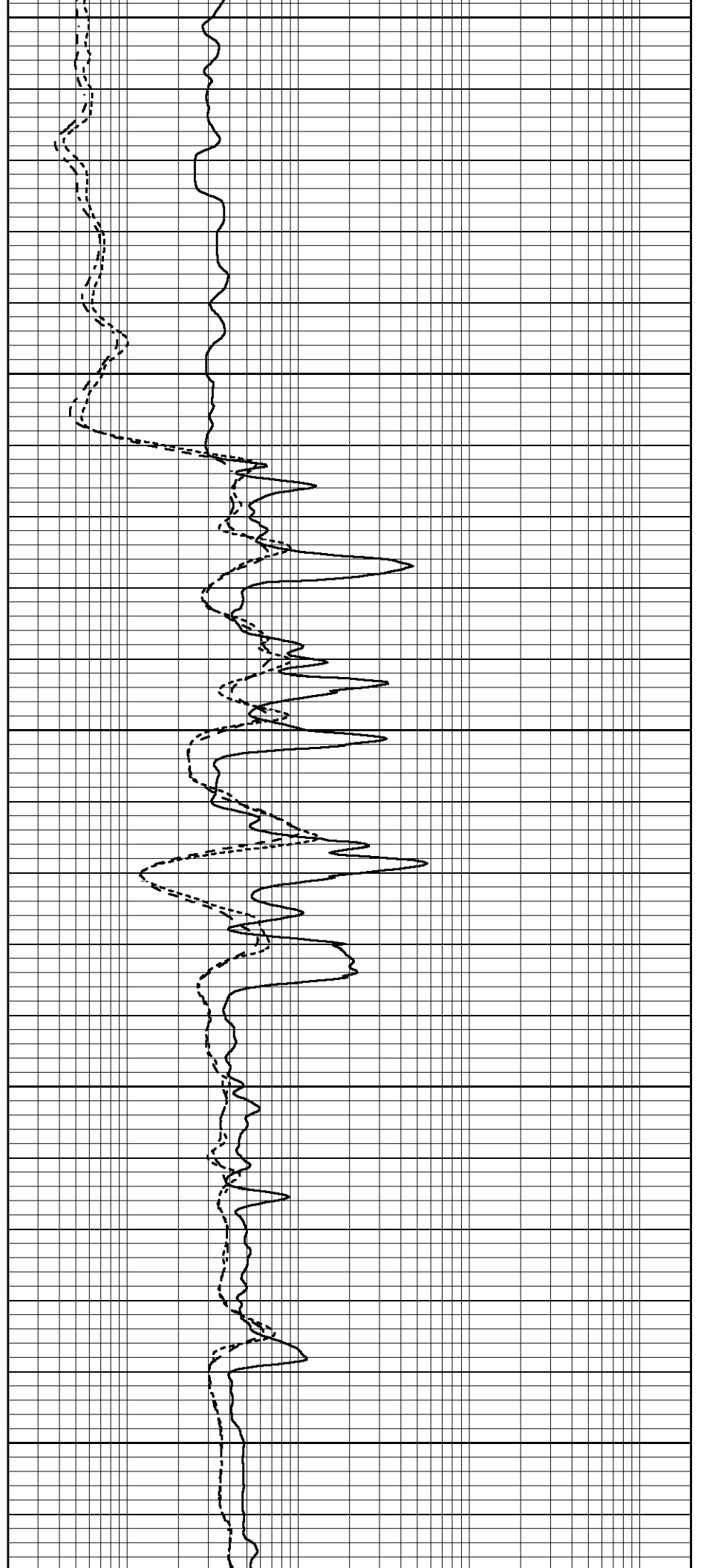
3400

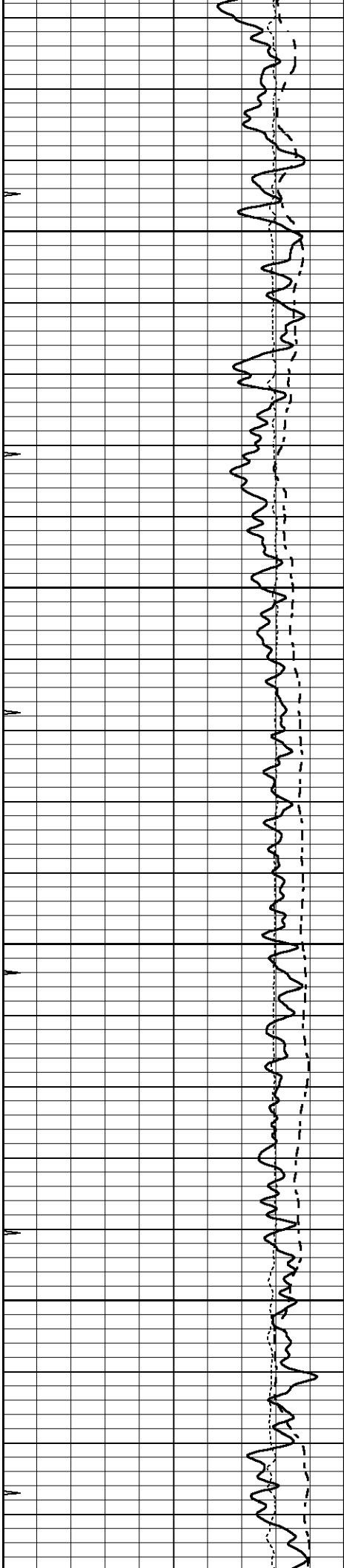
3450

3500

3550

3600



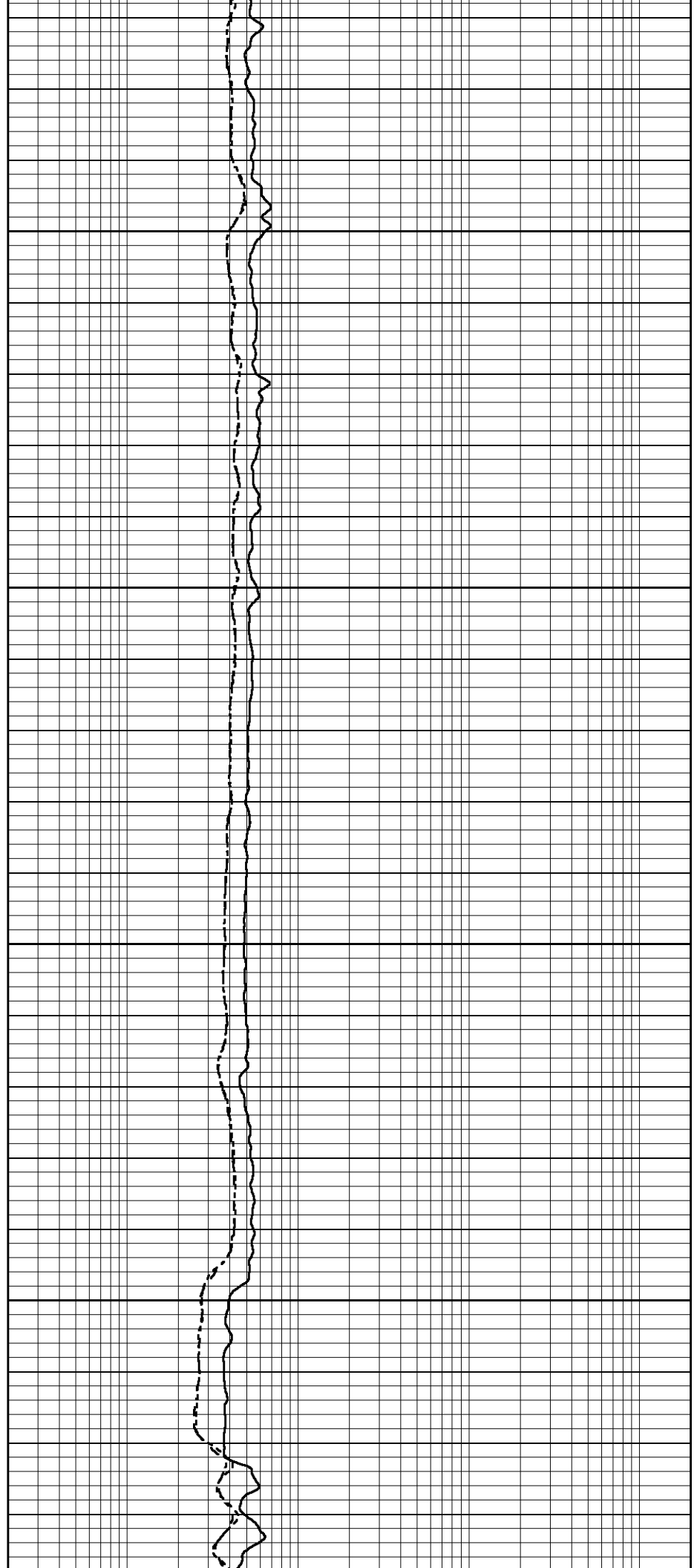


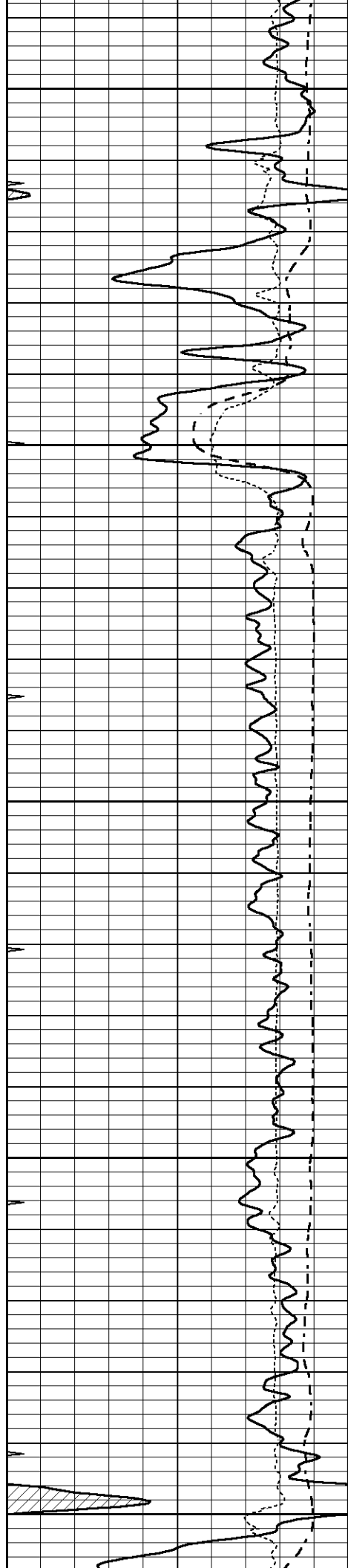
3650

3700

3750

3800





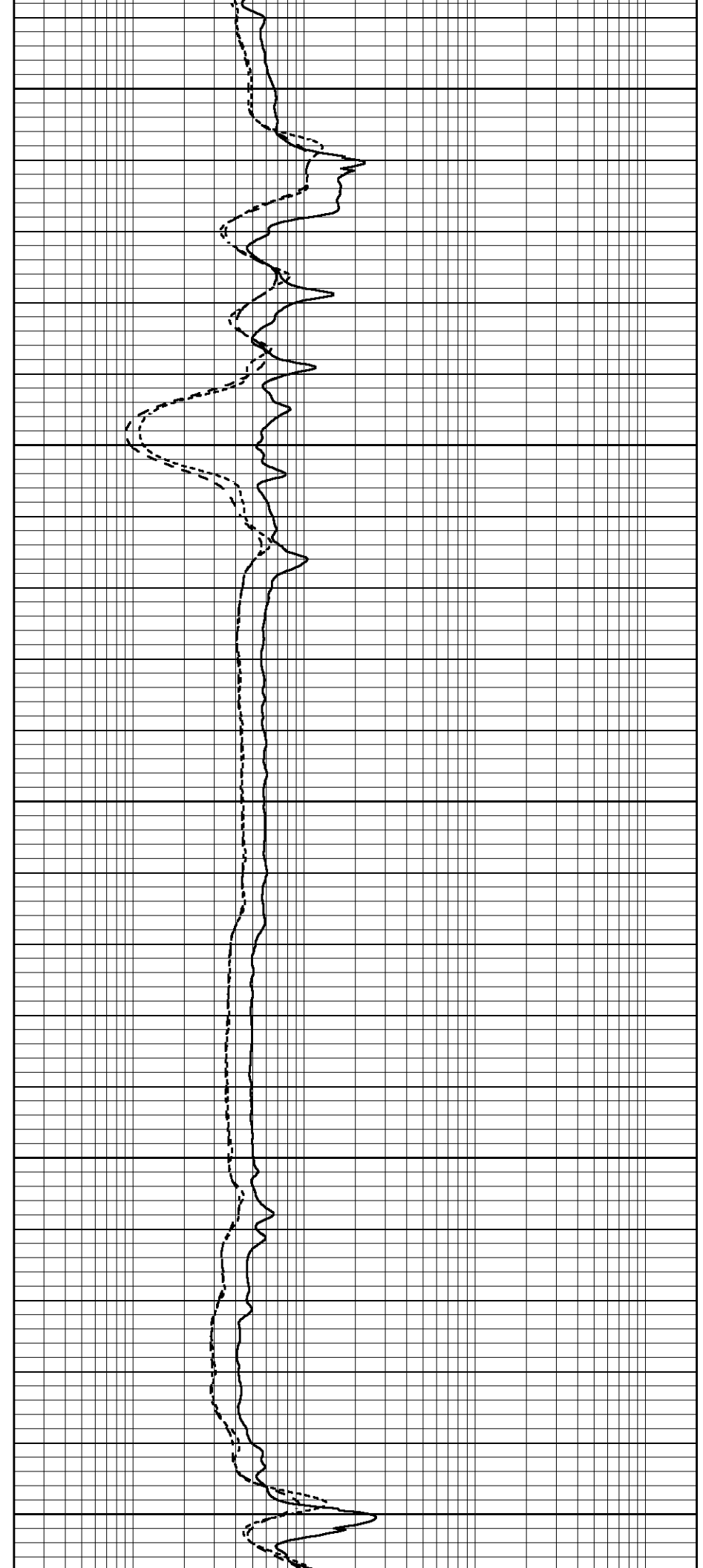
3850

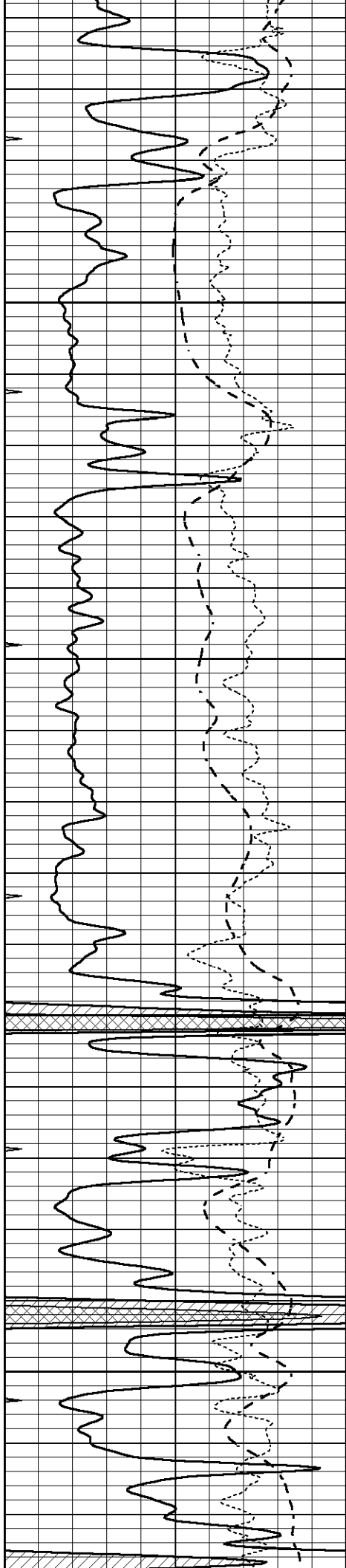
3900

3950

4000

4050



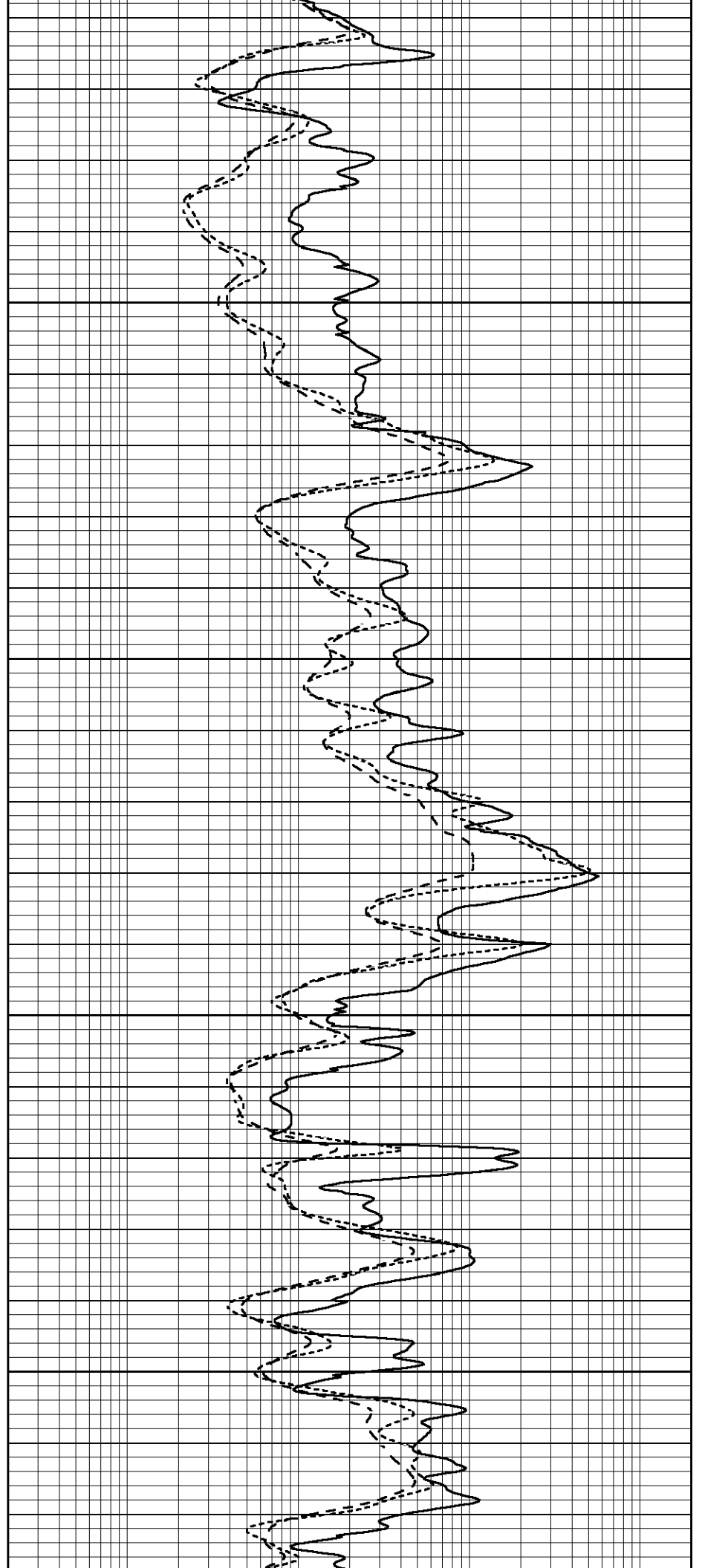


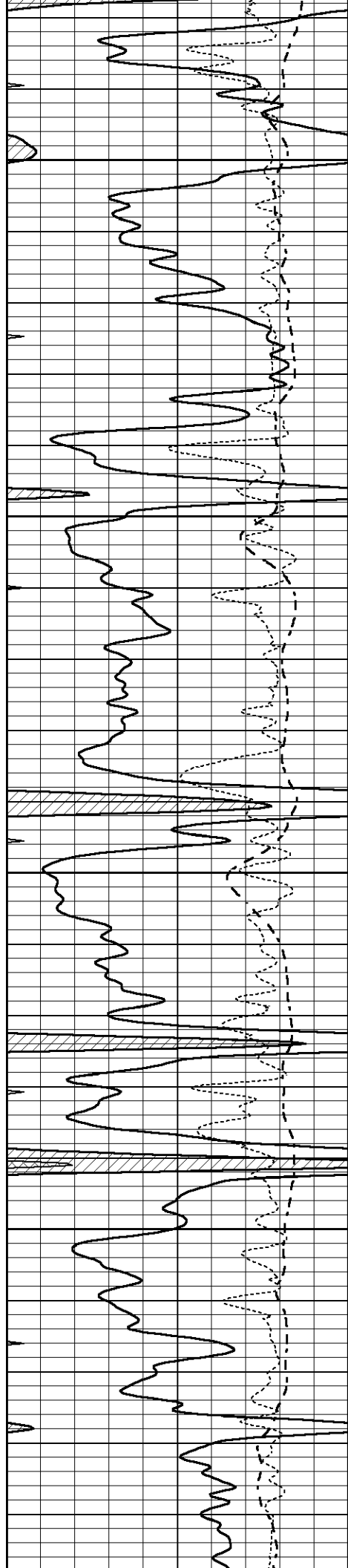
4100

4150

4200

4250



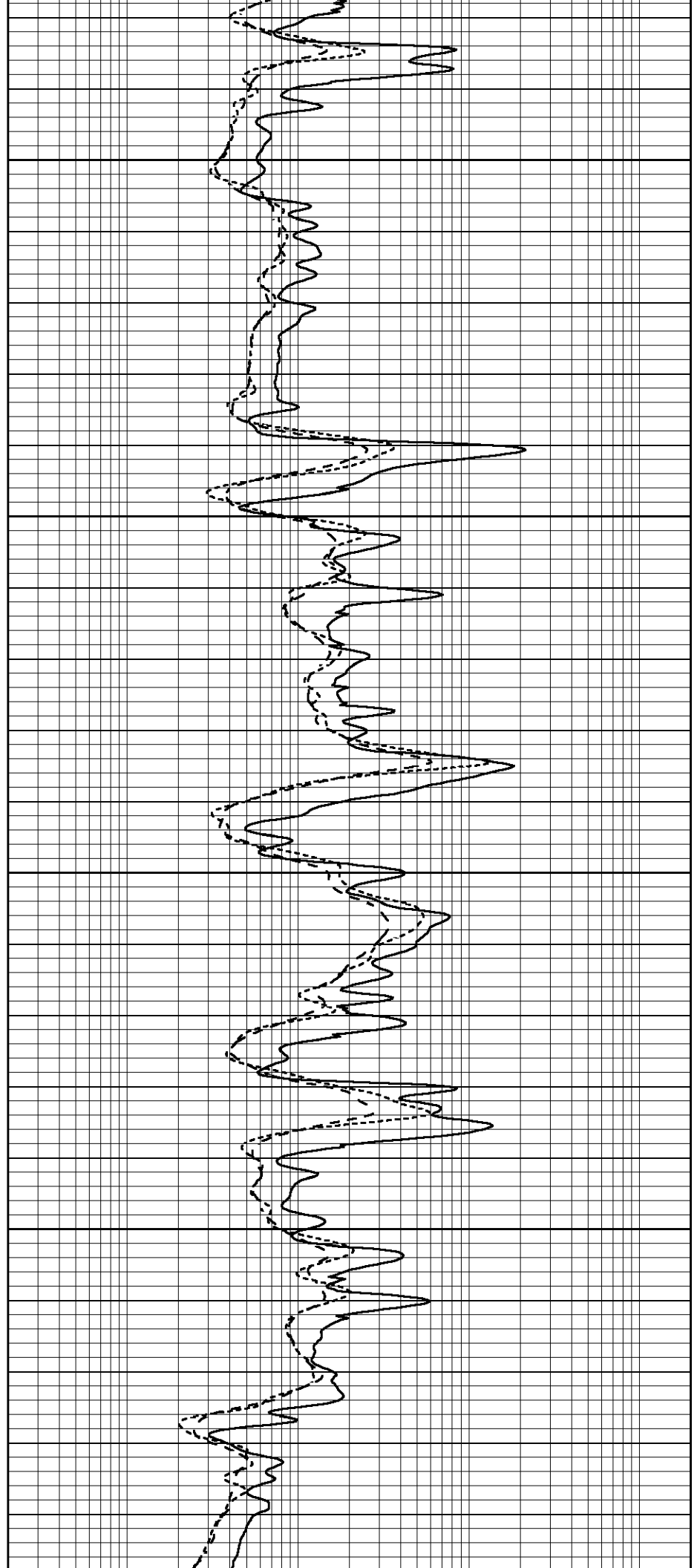


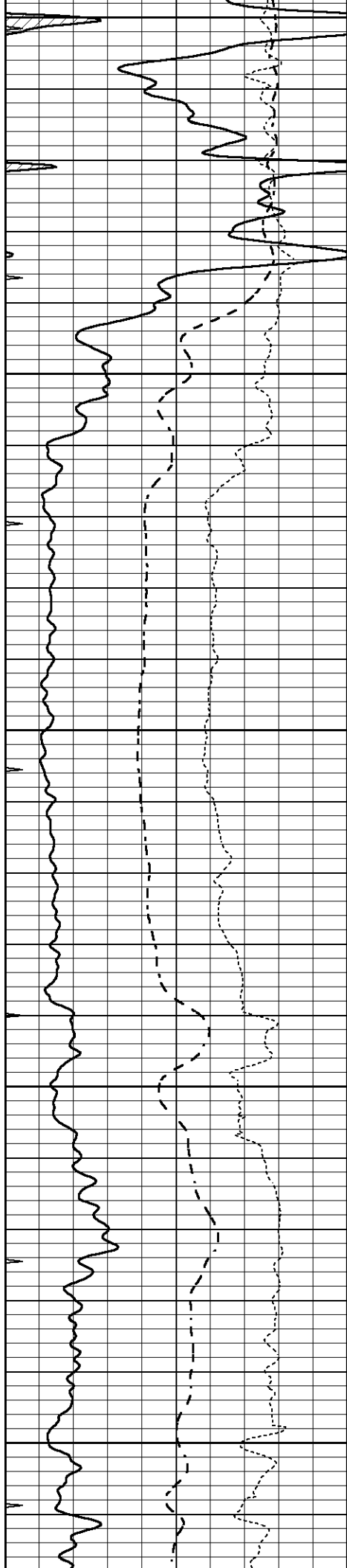
4300

4350

4400

4450





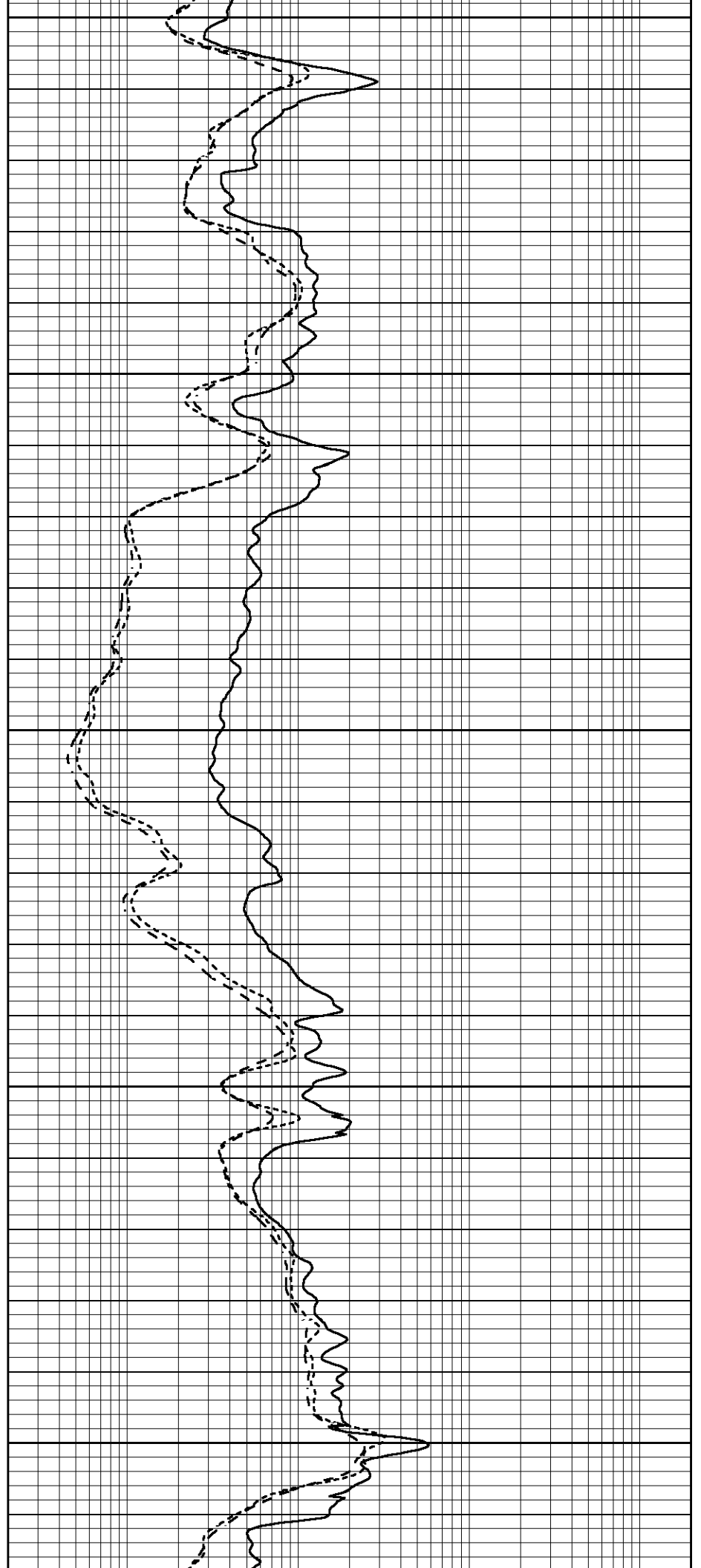
4500

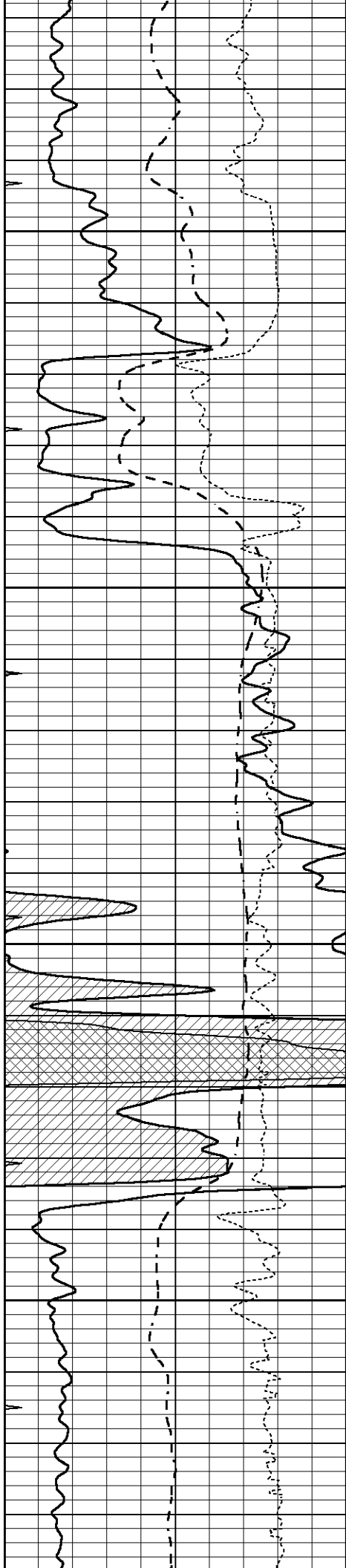
4550

4600

4650

4700



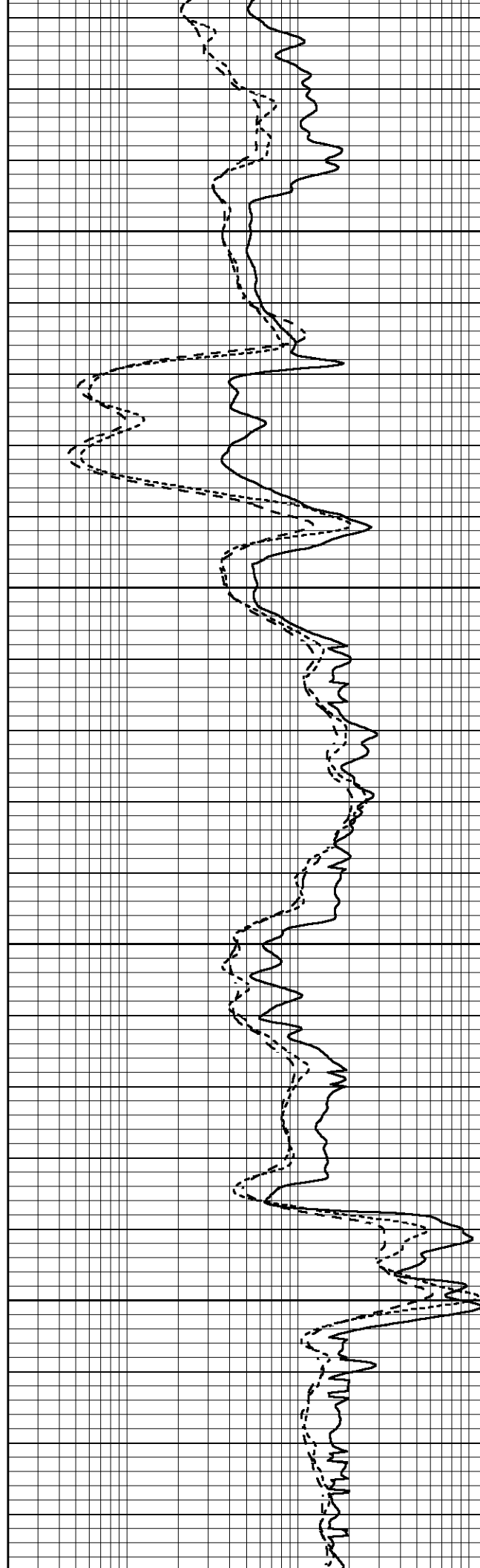


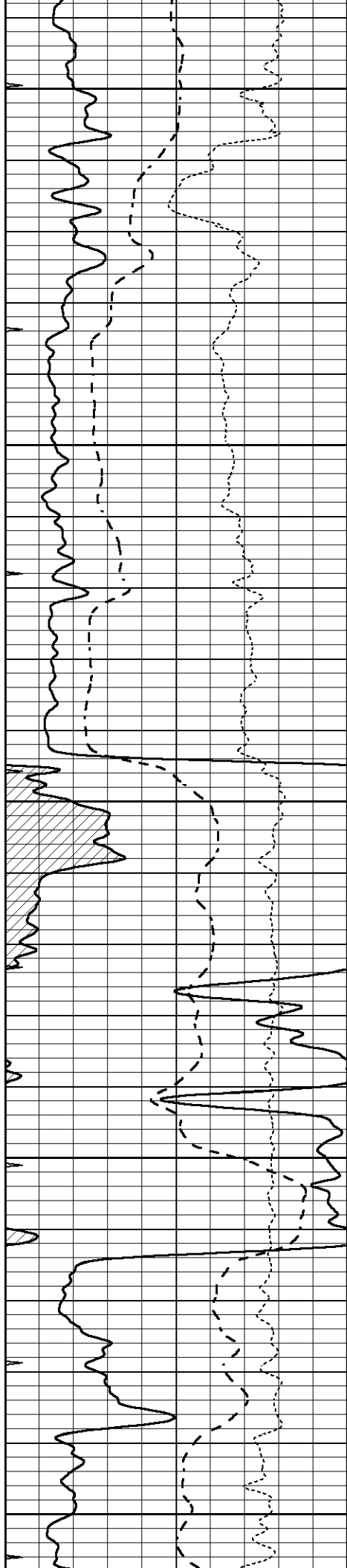
4750

4800

4850

4900





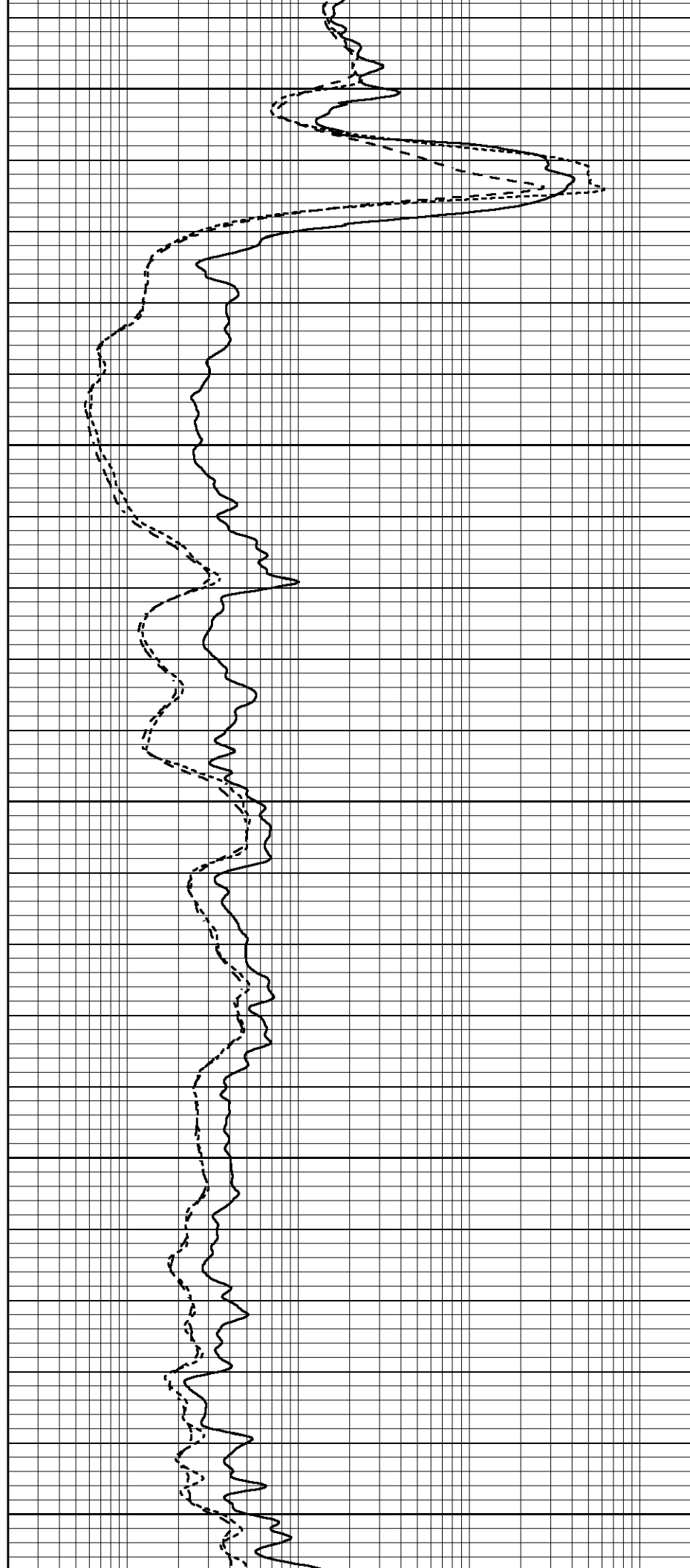
4950

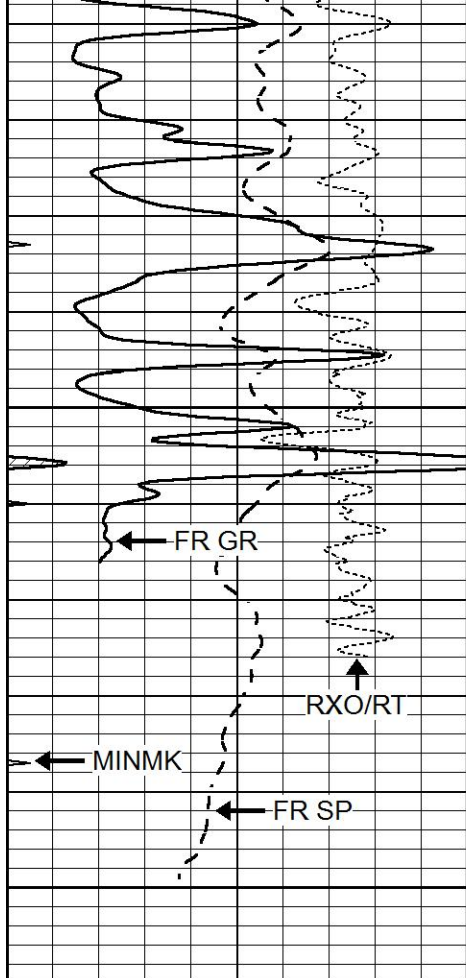
5000

5050

5100

5150

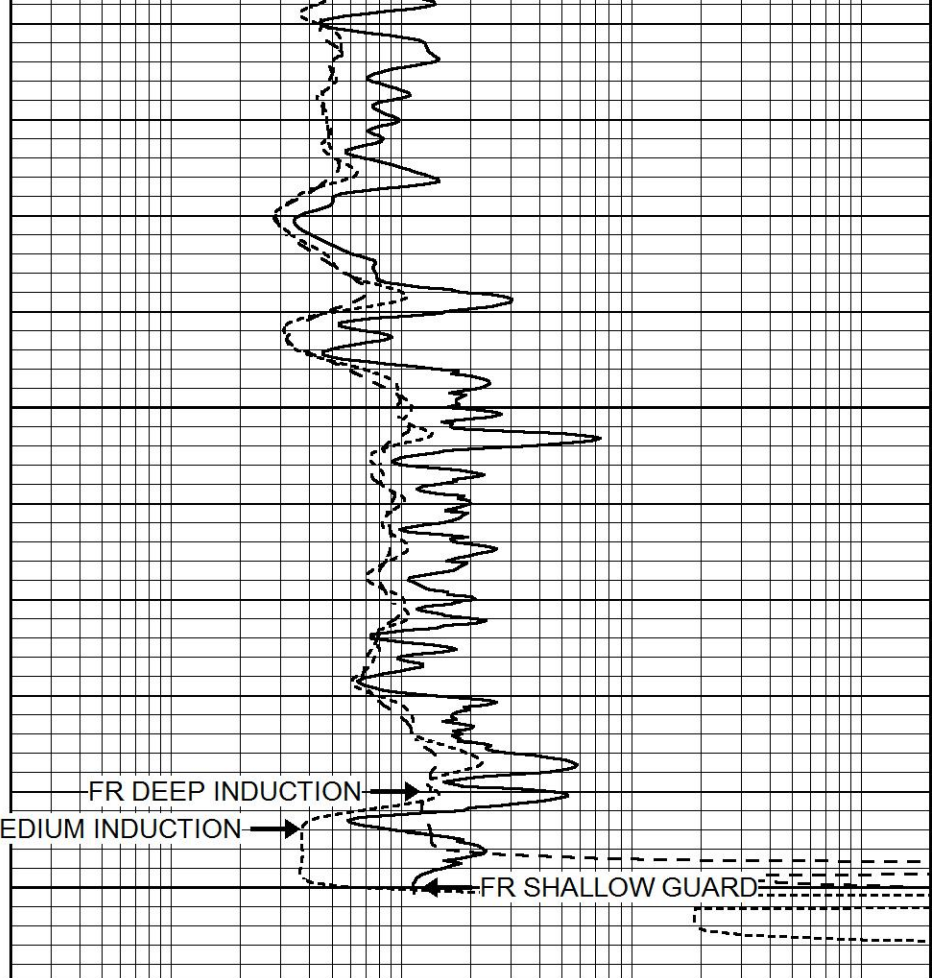




5200

5250
LTD 5252

0	GAMMA RAY (GAPI)	150
-100	SP (mV)	100
-250	Rxo/Rt	50
0	MINMK	20



0.2	SHALLOW GUARD (Ohm-m)	2000
0.2	DEEP INDUCTION (Ohm-m)	2000
0.2	MEDIUM INDUCTION (Ohm-m)	2000

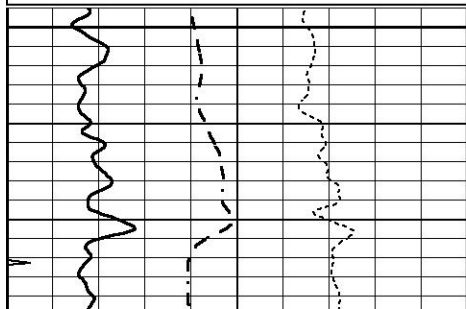


REPEAT SECTION

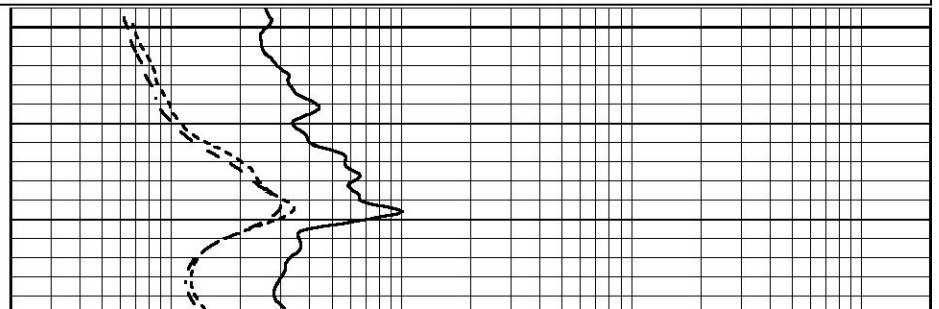
Database File 6333pe.db
 Dataset Pathname pass2.1R
 Presentation Format _dil
 Dataset Creation Thu Apr 21 22:55:14 2022
 Charted by Depth in Feet scaled 1:240

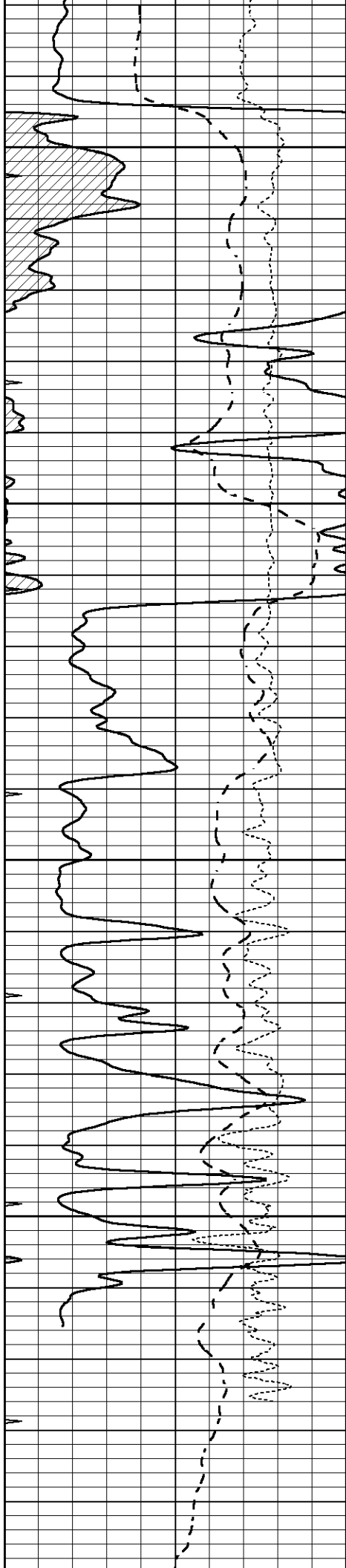
0	GAMMA RAY (GAPI)	150
-100	SP (mV)	100
-250	Rxo/Rt	50
0	MINMK	20

0.2	SHALLOW GUARD (Ohm-m)	2000
0.2	DEEP INDUCTION (Ohm-m)	2000
0.2	MEDIUM INDUCTION (Ohm-m)	2000



5000





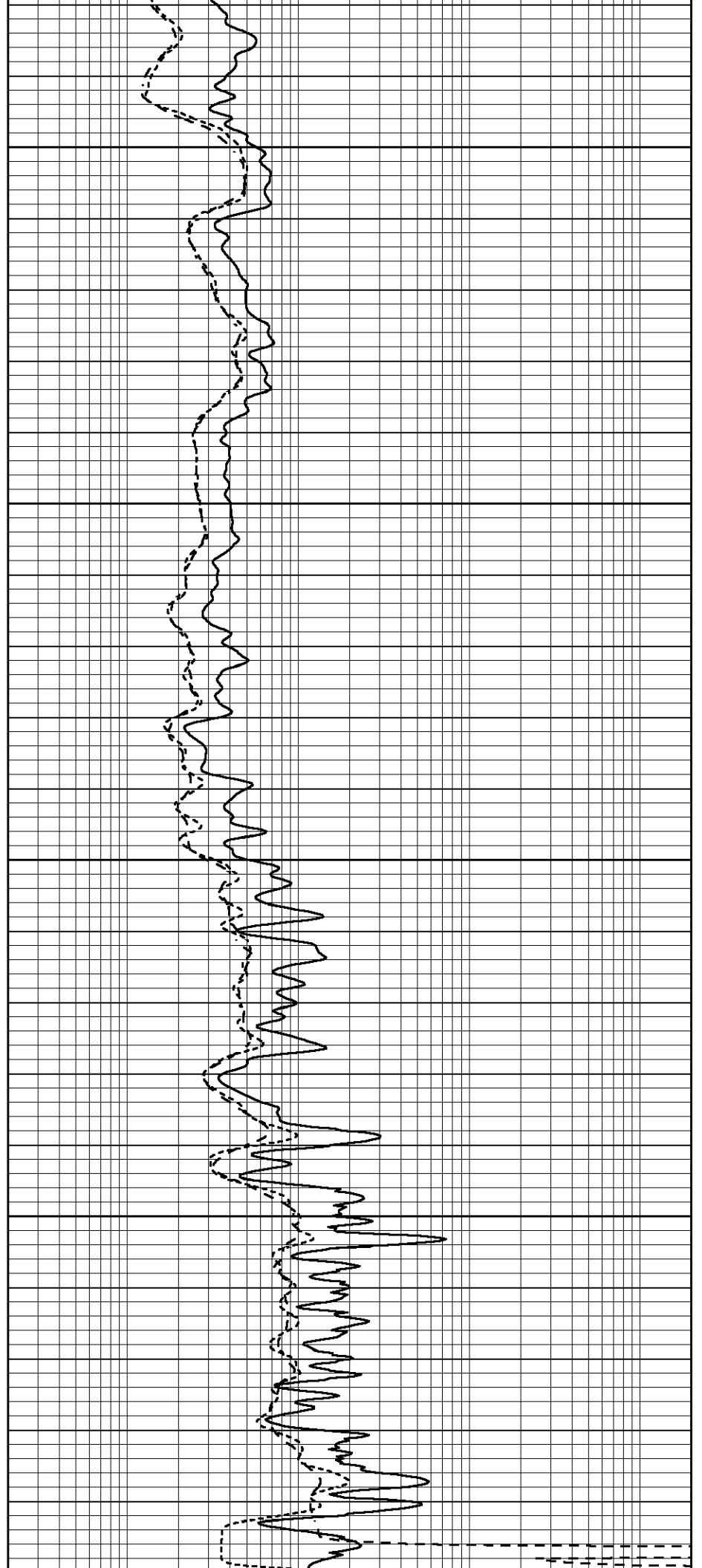
5050

5100

5150

5200

5250



0	GAMMA RAY (GAPI)	150
-100	SP (mV)	100
-250	Rxo/Rt	50
0	MINMK	20

0.2	SHALLOW GUARD (Ohm-m)	2000
0.2	DEEP INDUCTION (Ohm-m)	2000
0.2	MEDIUM INDUCTION (Ohm-m)	2000

Calibration Report

Database File 6333pe.db
 Dataset Pathname pass3.1M
 Dataset Creation Thu Apr 21 22:50:53 2022

Dual Induction Calibration Report

Serial-Model: PROBE9-DILG
 Surface Cal Performed: Thu Apr 21 19:33:26 2022
 Downhole Cal Performed: Wed Mar 11 11:31:19 2020
 After Survey Verification Performed: Wed Mar 11 11:31:22 2020

Surface Calibration

Loop:	Readings				References			Results	
	Air	Loop			Air	Loop		m	b
Deep	-0.014	0.629	V	0.000	400.000	mmho/m	720.000	-8.000	
Medium	0.039	0.728	V	0.000	464.000	mmho/m	720.000	-20.000	
Internal:	Zero	Cal		Zero	Cal		m	b	
Deep	0.011	0.610	V	0.000	400.000	mmho/m	667.135	-7.256	
Medium	0.005	0.712	V	0.000	464.000	mmho/m	655.677	-3.102	

Downhole Calibration

	Readings				References			Results	
	Zero	Cal			Zero	Cal		m'	b'
Deep	0.000	0.000	mmho/m	14.508	388.384	mmho/m	1.000	0.000	
Medium	0.000	0.000	mmho/m	166.367	504.400	mmho/m	1.000	0.000	
LL3		7.500	V		1400.000	Ohm-m			
		0.000	V		20.000	Ohm-m			
		-7.200	V		4000.000	mmho-m			

After Survey Verification

	Readings				Targets			Results	
	Zero	Cal			Zero	Cal		m'	b'
Deep	0.000	0.000	mmho/m	0.000	0.000	mmho/m	0.000	0.000	
Medium	0.000	0.000	mmho/m	0.000	0.000	mmho/m	0.000	0.000	
LL3		1.000	Ohm-m		1.000	Ohm-m			
		0.000	Ohm-m		0.000	Ohm-m			
		1.000	mmho-m		1.000	mmho-m			

Litho Density Calibration Report
 Serial: 002 Model: PRB

Master Calibration

Performed Mon May 11 12:00:22 2020

	Background	Magnesium	Aluminum	Aluminum+Fe	
Window 1	787.5	10229.8	2775.7	2400.0	cps
Window 2	729.6	8732.5	2418.3	2137.0	cps
Window 3	603.0	4606.3	1428.3	1320.0	cps

Window 4	173.7	178.2	174.1	173.1	cps
Long Space	0.0	8002.9	1688.7	1407.4	cps
Short Space	1.1	1870.8	1208.3	1030.3	cps
Rho		1.7100	2.5900	0.0000	g/cc
Pe		2.0000	2.7500	5.7900	

Rib Angle	: 44.3	Rib Slope	: 0.976	Density/Spine Ratio	: 0.545
Spine Angle	: 74.3	Spine Slope	: 3.559	Spine Intercept	: -17.8

Before Survey Verification

Performed Wed Dec 31 18:00:00 1969

Window 1	0.0	0.0	0.0	0.0	cps
Window 2	0.0	0.0	0.0	0.0	cps
Window 3	0.0	0.0	0.0	0.0	cps
Window 4	0.0	0.0	0.0	0.0	cps
Long Space	0.0	0.0	0.0	0.0	cps
Short Space	0.0	0.0	0.0	0.0	cps
Measured Rho		0.0000	0.0000	0.0000	g/cc
Measured Correction		0.0000	0.0000	0.0000	g/cc
Measured Pe			0.0000	0.0000	

After Survey Verification

Performed Wed Dec 31 18:00:00 1969

Window 1	0.0	0.0	0.0	0.0	cps
Window 2	0.0	0.0	0.0	0.0	cps
Window 3	0.0	0.0	0.0	0.0	cps
Window 4	0.0	0.0	0.0	0.0	cps
Long Space	0.0	0.0	0.0	0.0	cps
Short Space	0.0	0.0	0.0	0.0	cps
Measured Rho		0.0000	0.0000	0.0000	g/cc
Measured Correction		0.0000	0.0000	0.0000	g/cc
Measured Pe			0.0000	0.0000	

Compensated Neutron Calibration Report

Serial Number: 070808PMC
Tool Model: NABORS

PRE-SURVEY VERIFICATION

Detector	Readings	Measured	Target
Short Space	cps		
Long Space	cps	pu	pu

POST-SURVEY VERIFICATION

Detector	Readings	Measured	Target
Short Space	cps		
Long Space	cps	pu	pu

Gamma Ray Calibration Report

Serial Number: 070558
Tool Model: OPEN_GR
Performed: Thu Apr 21 21:53:23 2022

Calibrator Value: 1.0 GAPI

Background Reading: 0.0 cps

Background Reading:	0.0	cps
Calibrator Reading:	1.0	cps
Sensitivity:	0.2800	GAPI/cps