



MIDWEST WIRELINE

# MICRORESISTIVITY LOG

Company: Murfin Drilling Company, Inc.  
 Well: Rusco-Davis #7-36  
 Field: Star West  
 County: Ellis  
 State: Kansas

Company: Murfin Drilling Company, Inc.  
 Well: Rusco-Davis #7-36  
 Field: Star West  
 County: Ellis  
 State: Kansas

Location: API #: 15-051-27023-00-00  
 NE NE NW SE  
 2430 FSL & 1330 FEL  
 SEC 36 TWP 11S RGE 20W  
 Permanent Datum: Ground Level Elevation 2017  
 Log Measured From: Kelly Bushing  
 Drilling Measured From: Kelly Bushing  
 Other Services: CNL/CDL DIL/BHCS  
 Elevation: K.B. 2022, D.F. G.L. 2017

Date	1/30/2022
Run Number	Two
Depth Driller	3701
Depth Logger	3700
Bottom Logged Interval	3699
Top Log Interval	2900
Casing Driller	8:625 @ 265
Casing Logger	262
Bit Size	7.875
Type Fluid in Hole	Chemical
Salinity, ppm CL	5200
Density / Viscosity	9.0 58
pH / Fluid Loss	10.0 6.8
Source of Sample	FLOWLINE
Rm @ Meas. Temp	0.75 @ 70
Rmt @ Meas. Temp	0.56 @ 70
Rmc @ Meas. Temp	1.01 @ 70
Source of Rmf / Rmc	CHARTS
Rm @ BHT	0.46 @ 113
Operating Rig Time	5 Hours
Max Rec. Temp. F	113
Equipment Number	P-24
Location	Hays
Recorded By	T. Martin
Witnessed By	Kent Matson

<<< Fold Here >>>

All interpretations are opinions based on inferences from electrical or other measurements and Midwest Wireline LLC cannot and does not guarantee the accuracy or correctness of any interpretation, and Midwest Wireline LLC will not be liable or responsible for any loss, costs, damages, or expenses incurred or sustained by anyone resulting from any interpretation made by any of our officers, agents or employees.

Comments

N/A DENOTES NOT AVAILABLE OR NON-APPLICABLE.

Yocemento, N to Homestead Rd,  
 3 W, N into

Log Measured From: Kelly Bushing 5 Ft. Above Permanent Datum

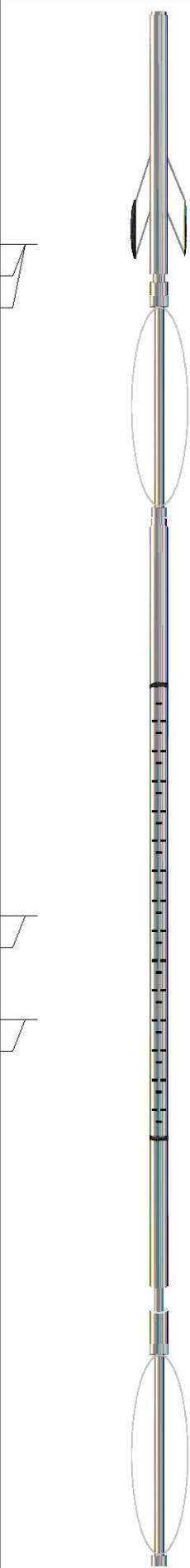
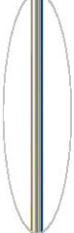
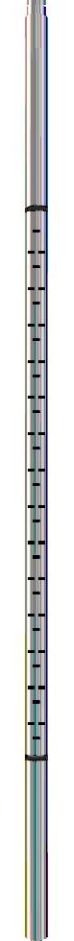
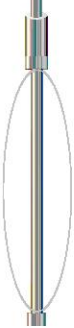
THANK YOU FOR USING MIDWEST WIRELINE LLC  
 785-625-3858

Your Midwest Wireline Crew

Engineer: T. Martin  
 Operator:  
 Operator:  
 Operator:

This Log Record Was Witnessed By

Primary Witness: Kent Matson  
 Secondary Witness:  
 Secondary Witness:  
 Secondary Witness:

Sensor	Offset (ft)	Schematic	Description	Length (ft)	O.D. (in)	Weight (lb)
MCAL MI MN	25.42 25.42 25.42		ML-Pengo (Pengo1)	5.50	3.50	100.00
			CENT-PENGO (4-PENGO)	4.25	3.00	70.00
WVF4 WVF1	12.50 12.50		SLT-PENGO (601)	15.92	3.50	300.00
WVF3 WVF2	10.50 10.50					
			CENT-PENGO (3-PENGO)	4.25	3.00	70.00

Dataset: murfin\_rusco-davis #7-36.db: field/well/Sonmel/pass3  
 Total length: 29.92 ft  
 Total weight: 540.00 lb  
 O.D.: 3.50 in

# Log Variables

DatabaseC:\ProgramData\Warrior\Data\murfin\_rusco-davis #7-36.db  
 Dataset field/well/Stack/pass3.1/\_vars\_

## Top - Bottom

A	BOREID in	BOTTEMP degF	CASEOD in	CASETHCK in	FLUIDDEN g/cc	M	MATRXDEN g/cc
1	7.875	113	5.5	0	1	2	2.71
NPORSEL	PERFS	SNDERR mmho/m	SNDERRM mmho/m	SPSHIFT mV	SRFTEMP degF	SZCOR	TDEPTH ft
Limestone	0	0	0	385	50	Off	3700

## Variable Description

A : Cement Factor (a)  
 BOREID : Borehole I.D.  
 BOTTEMP : Bottom Hole Temperature  
 CASEOD : Casing O.D.  
 CASETHCK : Casing Thickness  
 FLUIDDEN : Fluid Density  
 M : Cement Exp (m)  
 MATRXDEN : Matrix Density

NPORSEL : Neutron Porosity Curve Select  
 PERFS : Perforation Flag  
 SNDERR : Deep Sonde Error Correction  
 SNDERRM : Medium Sonde Error Correction  
 SPSHIFT : S.P. Baseline Offset  
 SRFTEMP : Surface Temperature  
 SZCOR : CN Size Cor. ?  
 TDEPTH : Total Depth



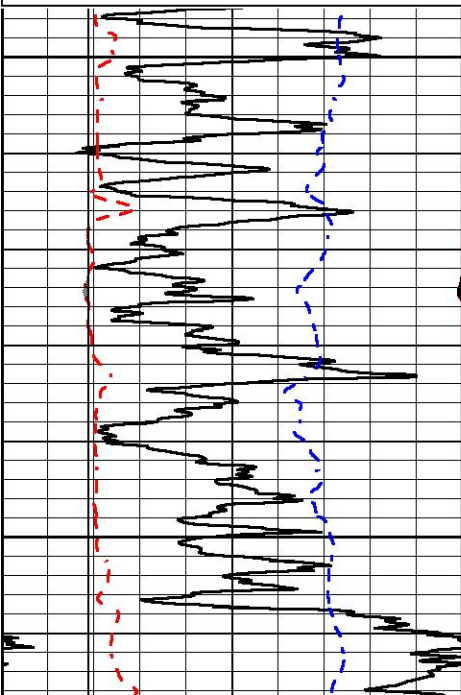
## DETAIL SECTION

### MAIN PASS

Database File murfin\_rusco-davis #7-36.db  
 Dataset Pathname Stack/pass3.1  
 Presentation Format \_micro  
 Dataset Creation Sun Jan 30 23:57:16 2022  
 Charted by Depth in Feet scaled 1:240

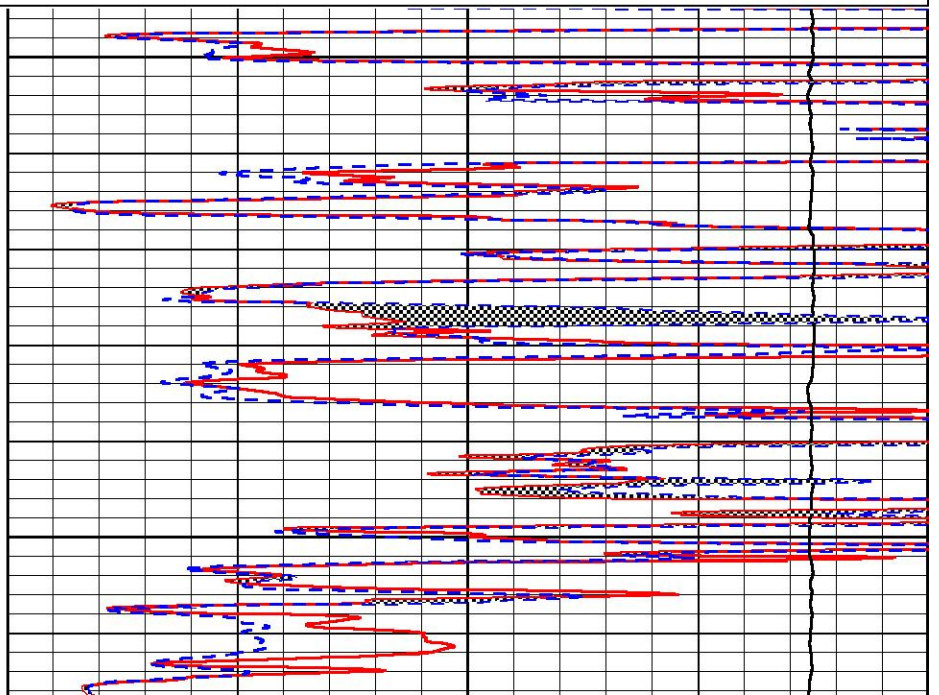
0	Gamma Ray (GAPI)	150
6	Caliper (in)	16
-2.875	mcal (in)	7.875
-200	SP (mV)	0

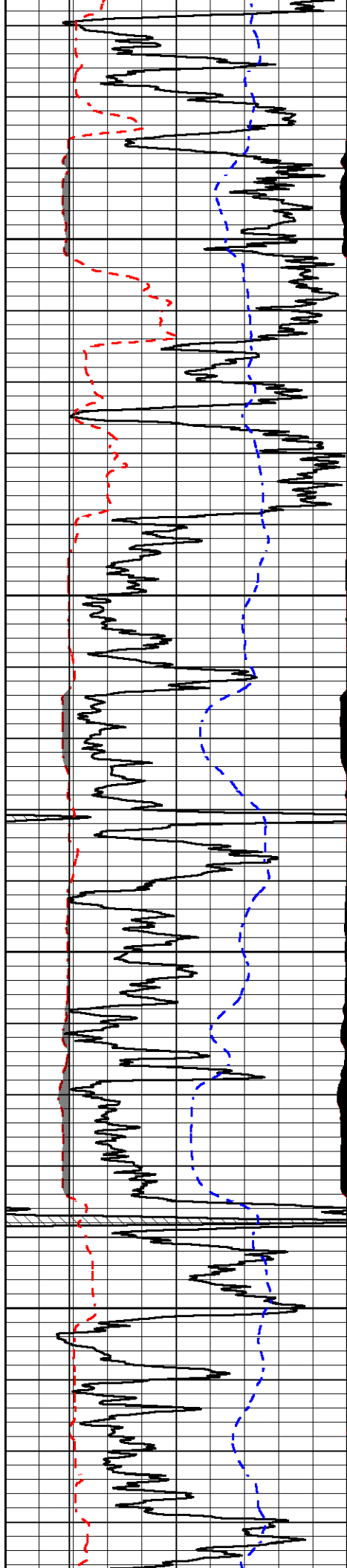
0	Micro Inverse 1 X 1 (Ohm-m)	40
0	Micro Normal 2" (Ohm-m)	40
10000	Line Weight (lb)	0



2900

2950



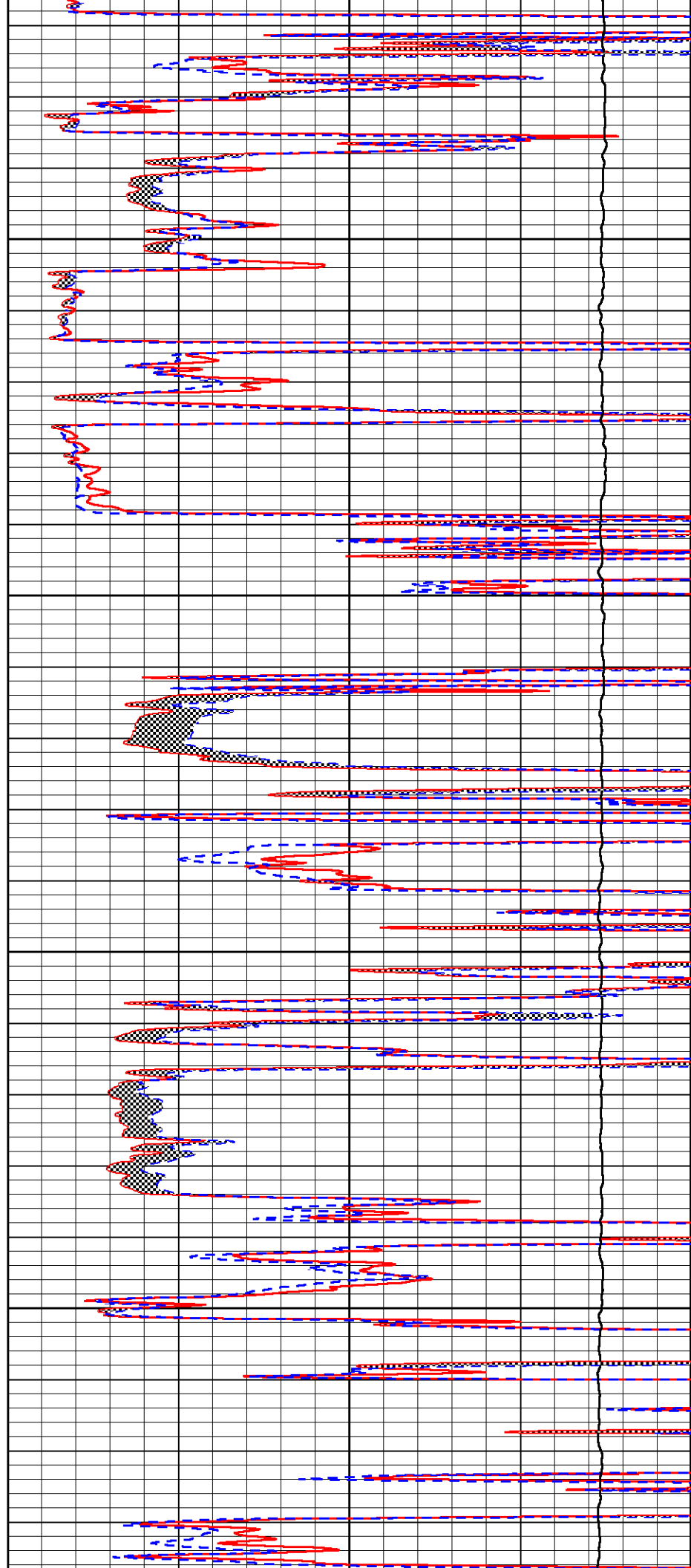


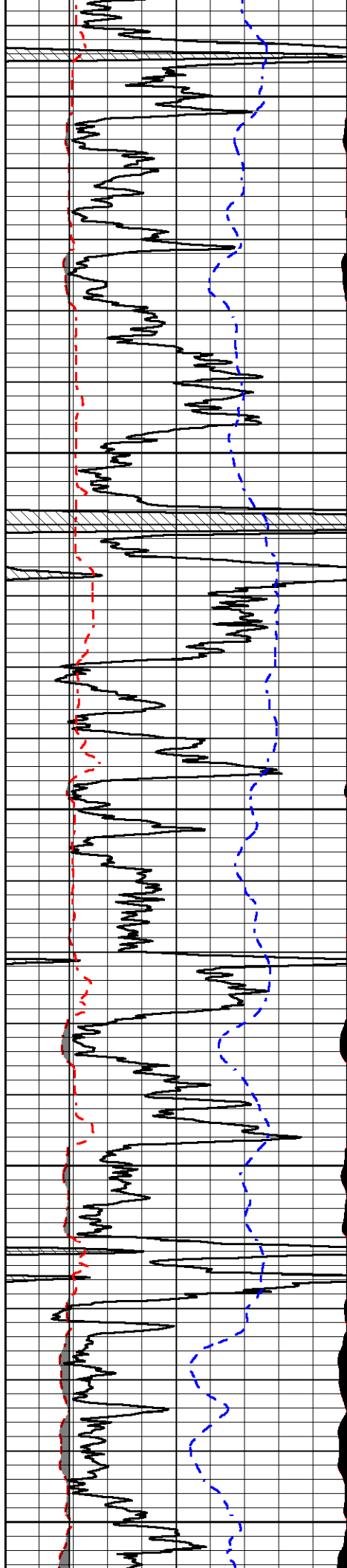
3000

3050

3100

3150





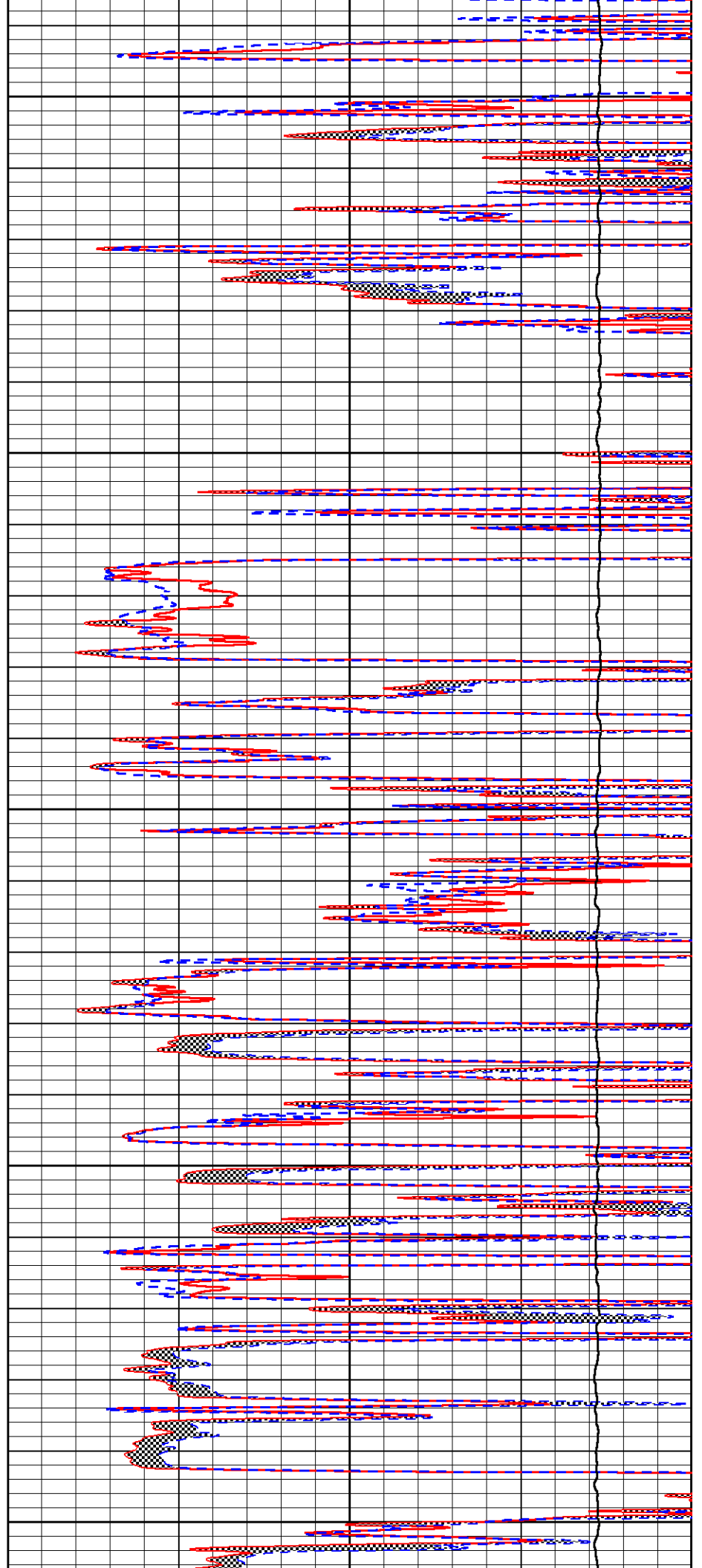
3200

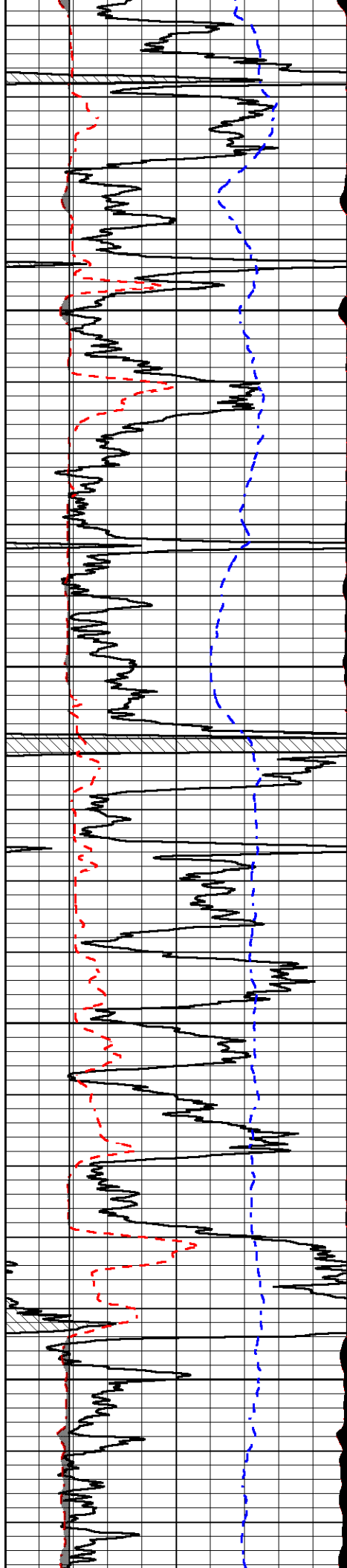
3250

3300

3350

3400



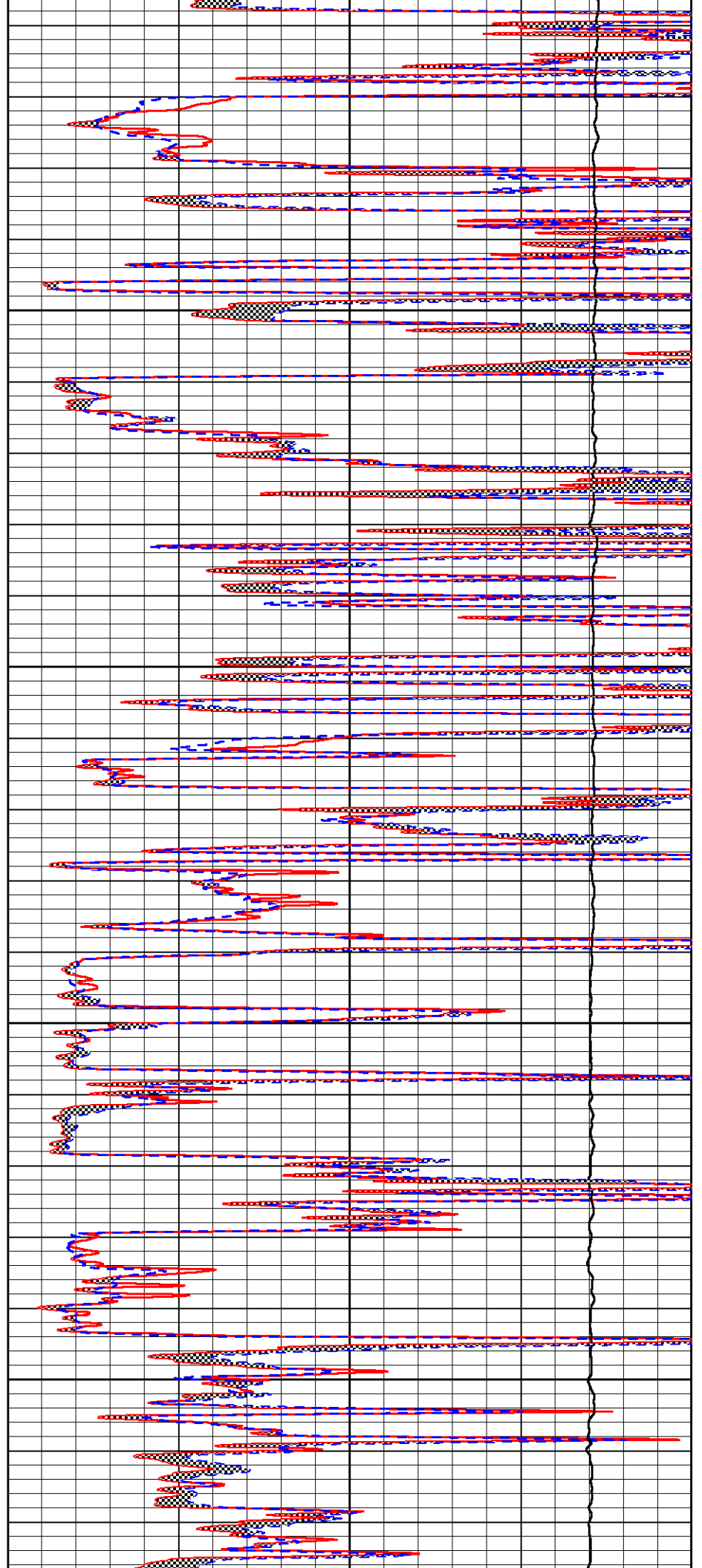


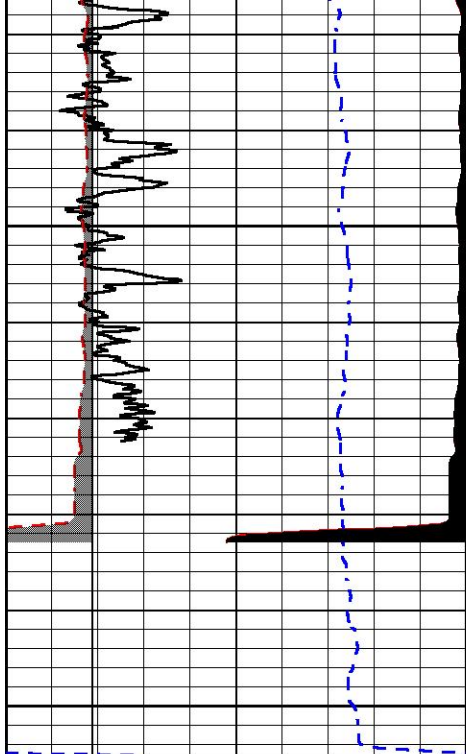
3450

3500

3550

3600

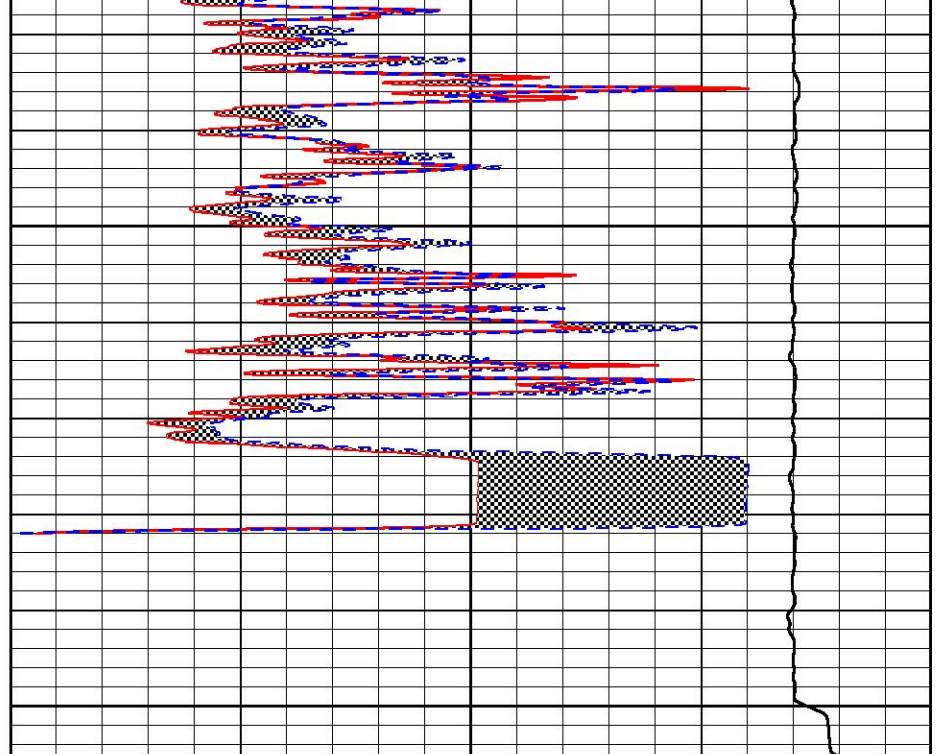




3650

3700

0	Gamma Ray (GAPI)	150
6	Caliper (in)	16
-2.875	mcal (in)	7.875
-200	SP (mV)	0



0	Micro Inverse 1 X 1 (Ohm-m)	40
0	Micro Normal 2" (Ohm-m)	40
10000	Line Weight (lb)	0



MIDWEST WIRELINE

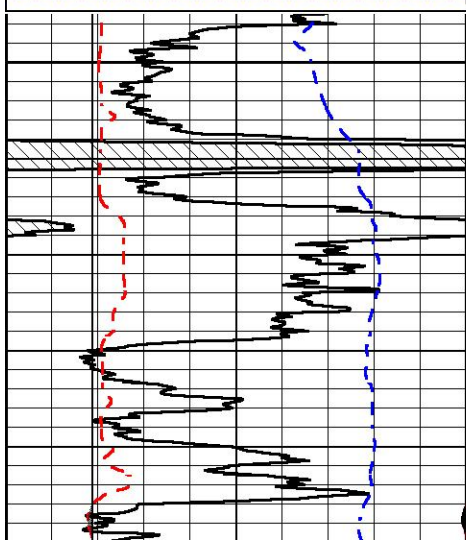
## REPEAT SECTION

### REPEAT PASS

Database File murfin\_rusco-davis #7-36.db  
 Dataset Pathname Stack/pass2.1  
 Presentation Format \_micro  
 Dataset Creation Sun Jan 30 23:20:44 2022  
 Charted by Depth in Feet scaled 1:240

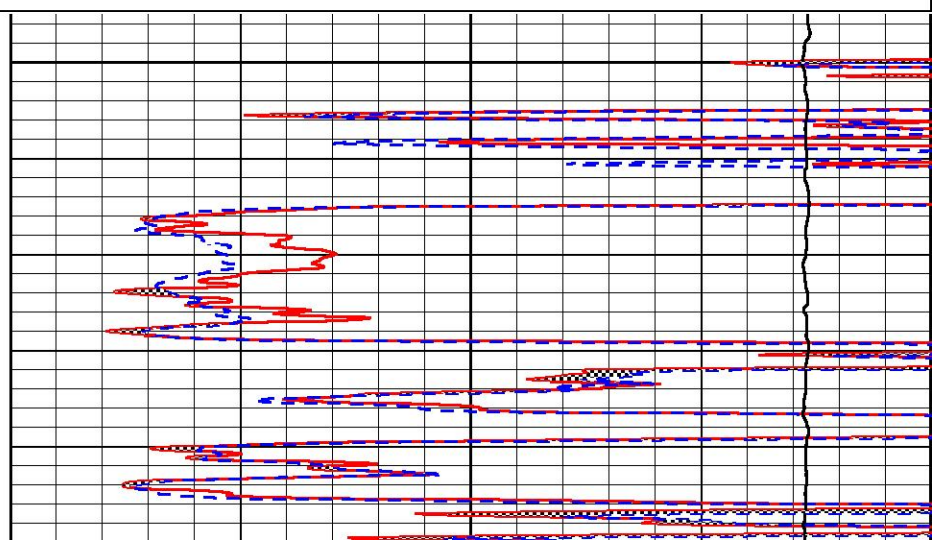
0	Gamma Ray (GAPI)	150
6	Caliper (in)	16
-2.875	mcal (in)	7.875
-200	SP (mV)	0

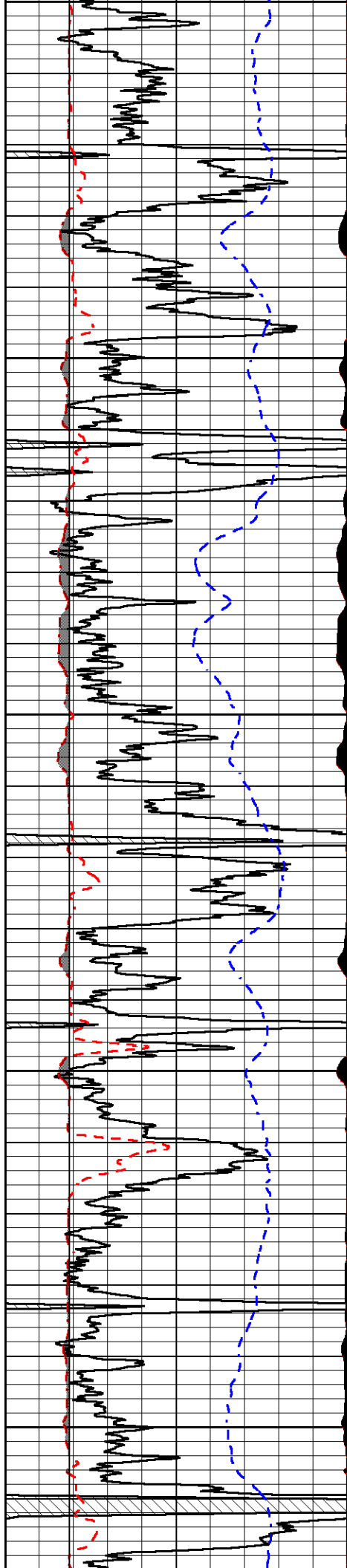
0	Micro Inverse 1 X 1 (Ohm-m)	40
0	Micro Normal 2" (Ohm-m)	40
10000	Line Weight (lb)	0



3250

3300





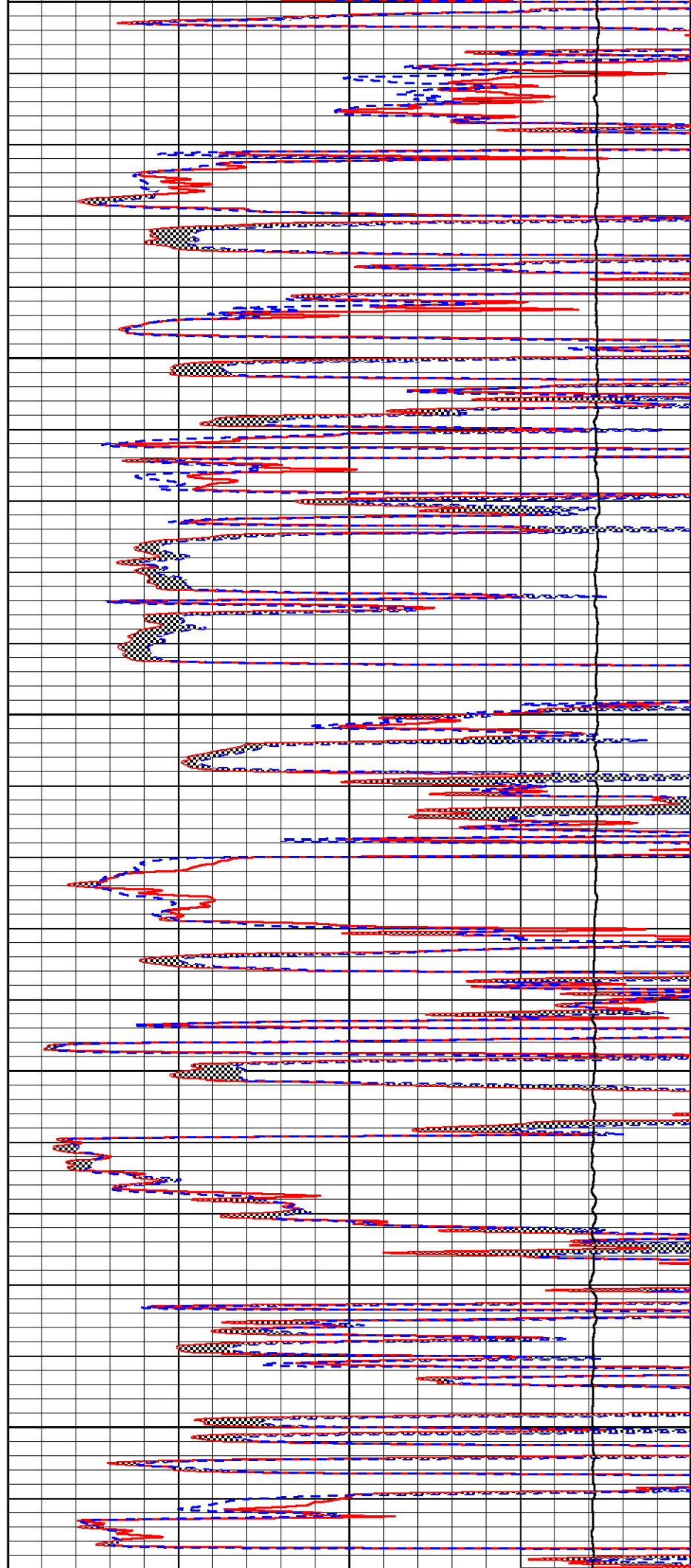
3500

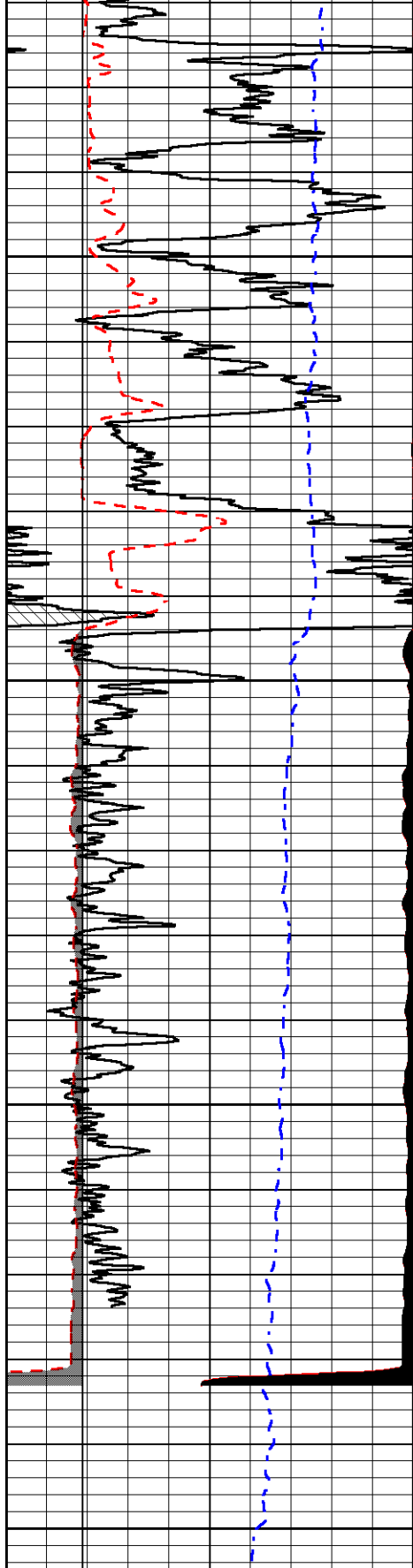
3350

3400

3450

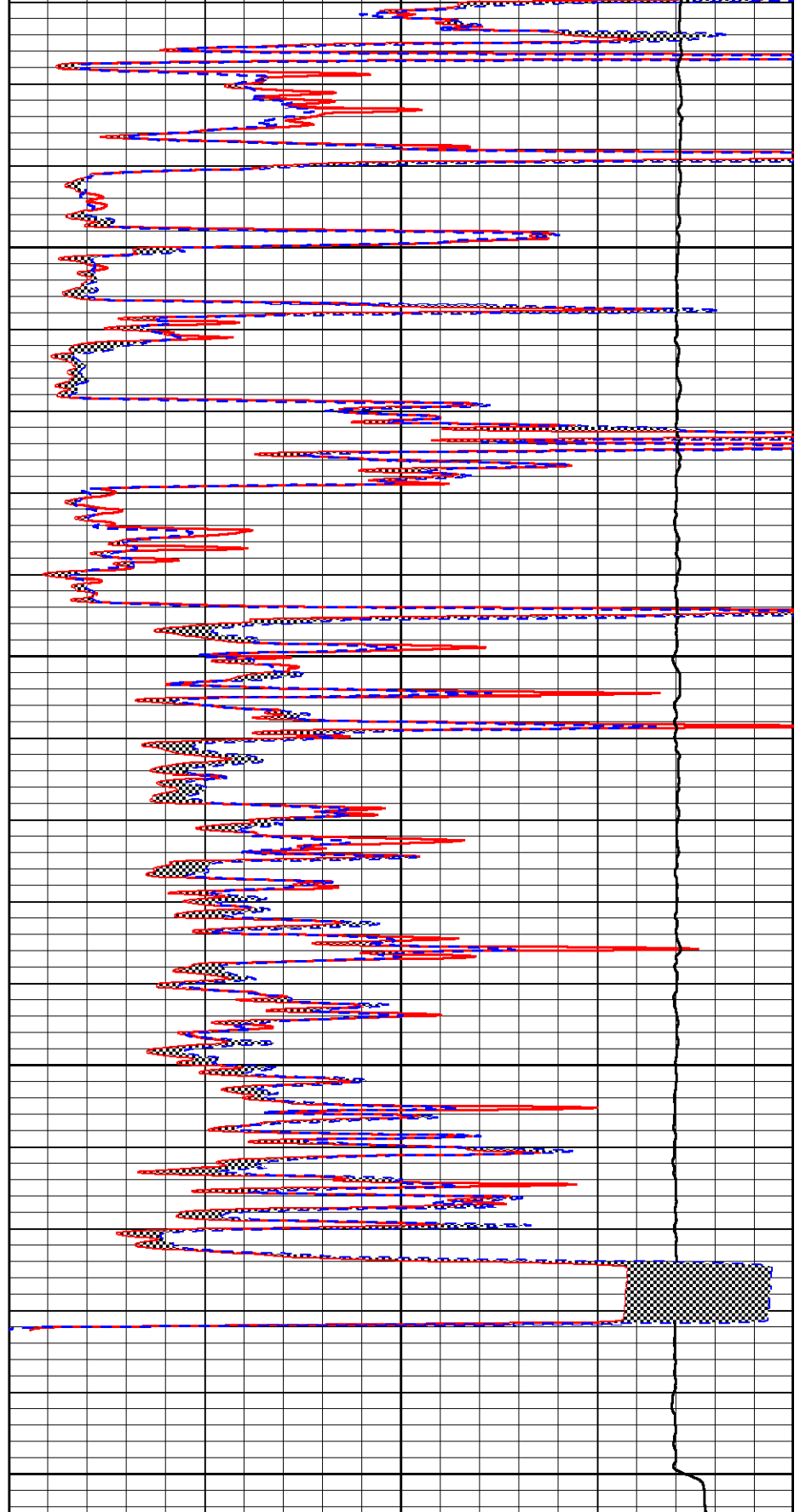
3500





0	Gamma Ray (GAPI)	150
6	Caliper (in)	16
-2.875	mcal (in)	7.875
-200	SP (mV)	0

3550  
3600  
3650  
3700



0	Micro Inverse 1 X 1 (Ohm-m)	40
0	Micro Normal 2" (Ohm-m)	40
10000	Line Weight (lb)	0



Company Murfin Drilling Company, Inc.



Well	Rusco-Davis #7-36
Field	Star West
County	Ellis
State	Kansas