



MIDWEST WIRELINE

**DUAL COMPENSATED
POROSITY /
MICRO LOG**

Company Murfin Drilling Company, Inc.
Well Rusco-Davis #7-36
Field Star West
County Ellis
State Kansas

Company Murfin Drilling Company, Inc.
Well Rusco-Davis #7-36
Field Star West
County Ellis
State Kansas

Location: API #: 15-051-27023-00-00
NE NE NW SE
2430 FSL & 1330 FEL
SEC 36 TWP 11S RGE 20W
Permanent Datum Ground Level Elevation 2017
Log Measured From Kelly Bushing
Drilling Measured From Kelly Bushing
Other Services
DIL
MEL/BHCS
K.B. 2022
D.F.
G.L. 2017

Date	1/30/2022						
Run Number	One						
Type Log	CNL / CDL / ML						
Depth Driller	3701						
Depth Logger	3700						
Bottom Logged Interval	3679						
Top Logged Interval	2900						
Type Fluid In Hole	Chemical						
Salinity, PPM CL	5200						
Density	9.0						
Level	Full						
Max. Rec. Temp. F	113						
Operating Rig Time	5 Hours						
Equipment -- Location	P-24 Hays						
Recorded By	T. Martin						
Witnessed By	Kent Matson						
Borehole Record							
Run No.	Bit	From	To	Size	Wgt.	From	To
One	12.25	00	265	8.625	23	00	265
Two	7.875	265	TD				
Casing Record							

<<< Fold Here >>>

All interpretations are opinions based on inferences from electrical or other measurements and Midwest Wireline LLC cannot and does not guarantee the accuracy or correctness of any interpretation, and Midwest Wireline LLC will not be liable or responsible for any loss, costs, damages, or expenses incurred or sustained by anyone resulting from any interpretation made by any of our officers, agents or employees.

Comments

N/A DENOTES NOT AVAILABLE OR NON-APPLICABLE.

Yocemento, N to Homestead Rd,
3 W, N into

Log Measured From: Kelly Bushing 5 Ft. Above Permanent Datum

THANK YOU FOR USING Midwest Wireline LLC
785-625-3858

Your Midwest Wireline Crew

Engineer: T. Martin
Operator:
Operator:
Operator:

This Log Record Was Witnessed By

Primary Witness: Kent Matson
Secondary Witness:
Secondary Witness:
Secondary Witness:

Sensor	Offset (ft)	Schematic	Description	Length (ft)	O.D. (in)	Weight (lb)
GR	32.75		GR-M&W (101)	3.00	3.50	50.00
CNLSC CNSSC	29.65 28.90		CNT-M&W (207-MW)	5.00	3.50	100.00
LSD DCAL SSD	20.60 20.58 20.10		CDL-M&W (305-05)	8.50	4.00	250.00
RLL3F RLL3	15.50 15.50		DIL-M&W (501 HT)	18.25	3.50	220.00
CILD	8.33					
CILM	4.50					
SP	0.20					

Dataset: murfin_rusco-davis #7-36.db: field/well/Stack/pass3.1
 Total length: 34.75 ft
 Total weight: 620.00 lb
 O.D.: 4.00 in

Log Variables

DatabaseC:\ProgramData\Warrior\Data\murfin_rusco-davis #7-36.db
 Dataset field/well/Stack/pass3.1/_vars_

Top - Bottom

A	BOREID in	BOTTEMP degF	CASEOD in	CASETHCK in	FLUIDDEN g/cc	M	MATRXDEN g/cc
1	7.875	113	5.5	0	1	2	2.71
NPORSEL	PERFS	SNDERR mmho/m	SNDERRM mmho/m	SPSHIFT mV	SRFTEMP degF	SZCOR	TDEPTH ft
Limestone	0	0	0	385	50	Off	3700

Variable Description

A : Cement Factor (a)
 BOREID : Borehole I.D.
 BOTTEMP : Bottom Hole Temperature
 CASEOD : Casing O.D.
 CASETHCK : Casing Thickness
 FLUIDDEN : Fluid Density
 M : Cement Exp (m)
 MATRXDEN : Matrix Density

NPORSEL : Neutron Porosity Curve Select
 PERFS : Perforation Flag
 SNDERR : Deep Sonde Error Correction
 SNDERRM : Medium Sonde Error Correction
 SPSHIFT : S.P. Baseline Offset
 SRFTEMP : Surface Temperature
 SZCOR : CN Size Cor. ?
 TDEPTH : Total Depth



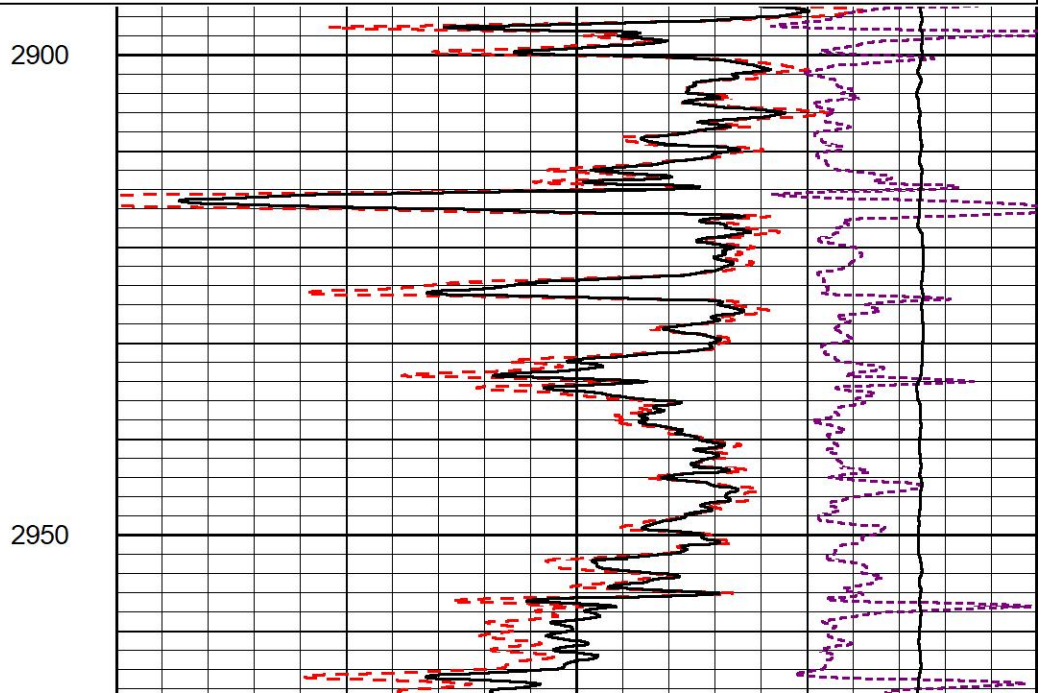
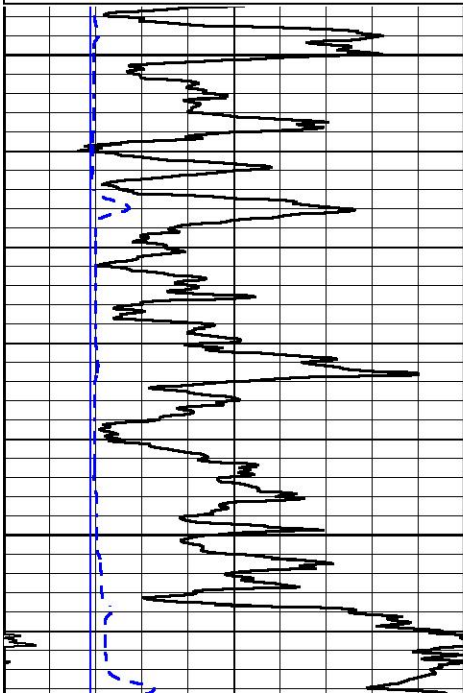
5" SCALE BULK DENSITY

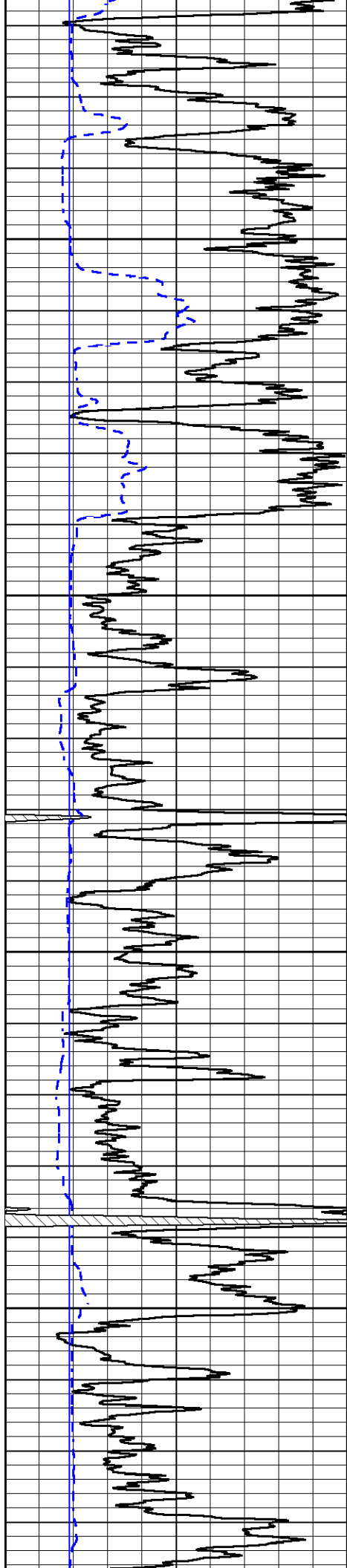
MAIN PASS

Database File murfin_rusco-davis #7-36.db
 Dataset Pathname Stack/pass3.3
 Presentation Format _cdl
 Dataset Creation Sun Jan 30 23:26:51 2022
 Charted by Depth in Feet scaled 1:240

0	Gamma Ray (GAPI)	150
6	Caliper (in)	16

30	Compensated Density (pu)	-10
2	Bulk Density (g/cc)	3
10000	Line Tension (lb)	0
-0.25	Correction (g/cc)	0.25



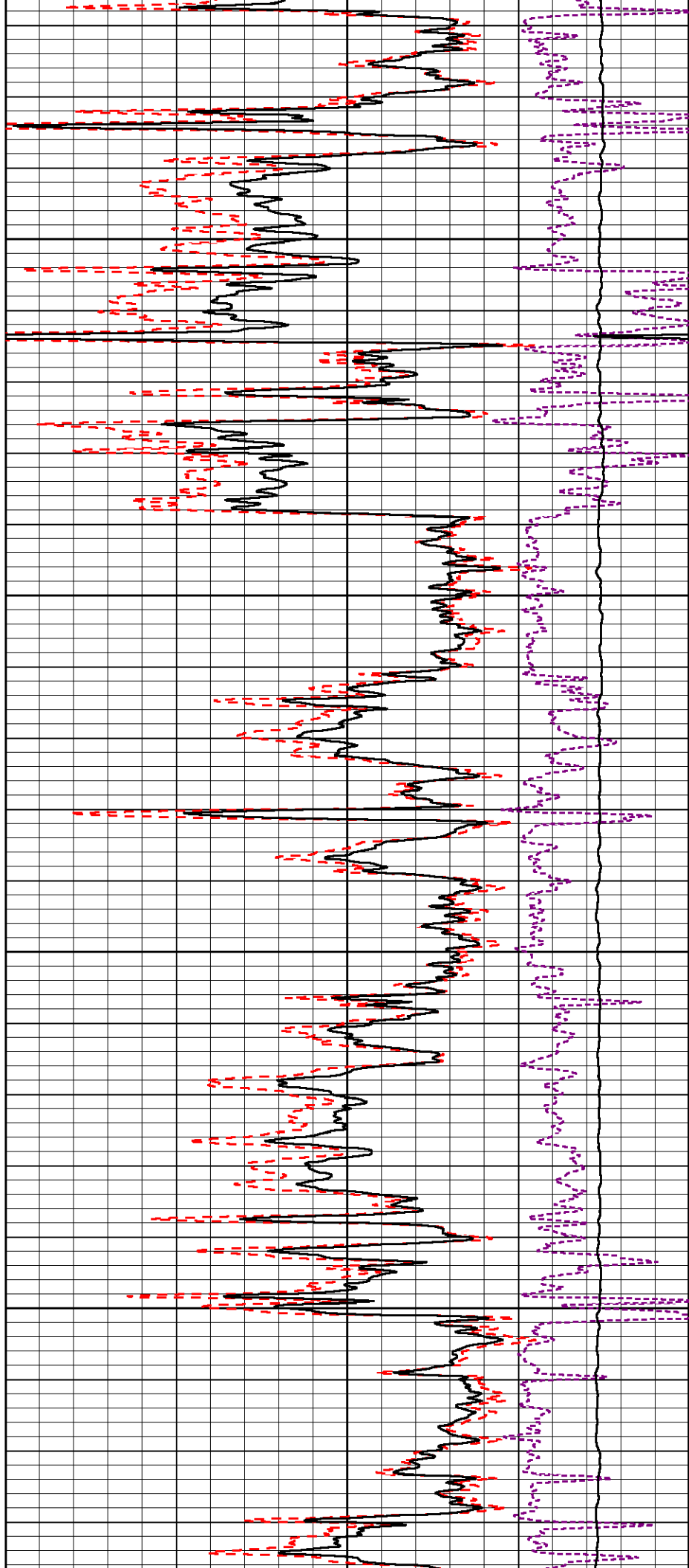


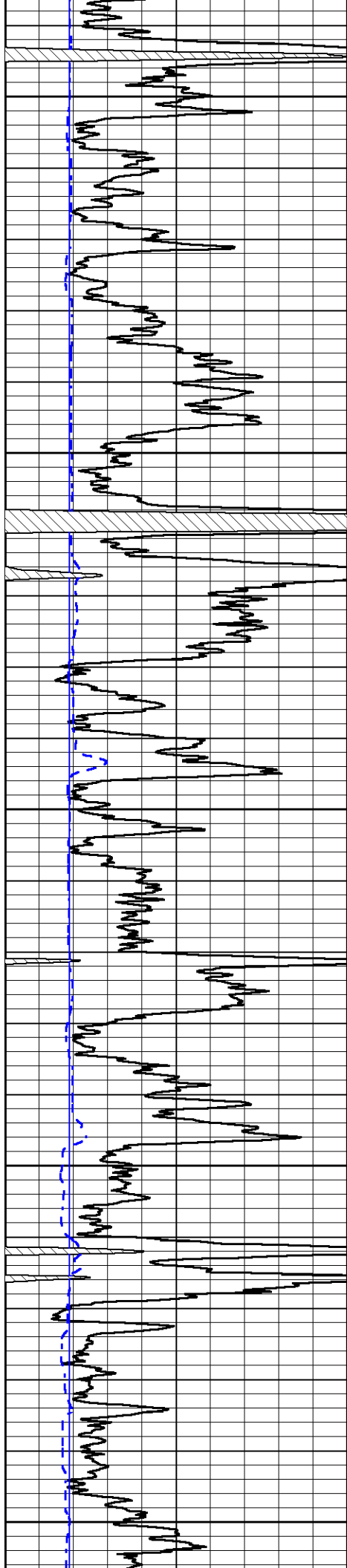
3000

3050

3100

3150





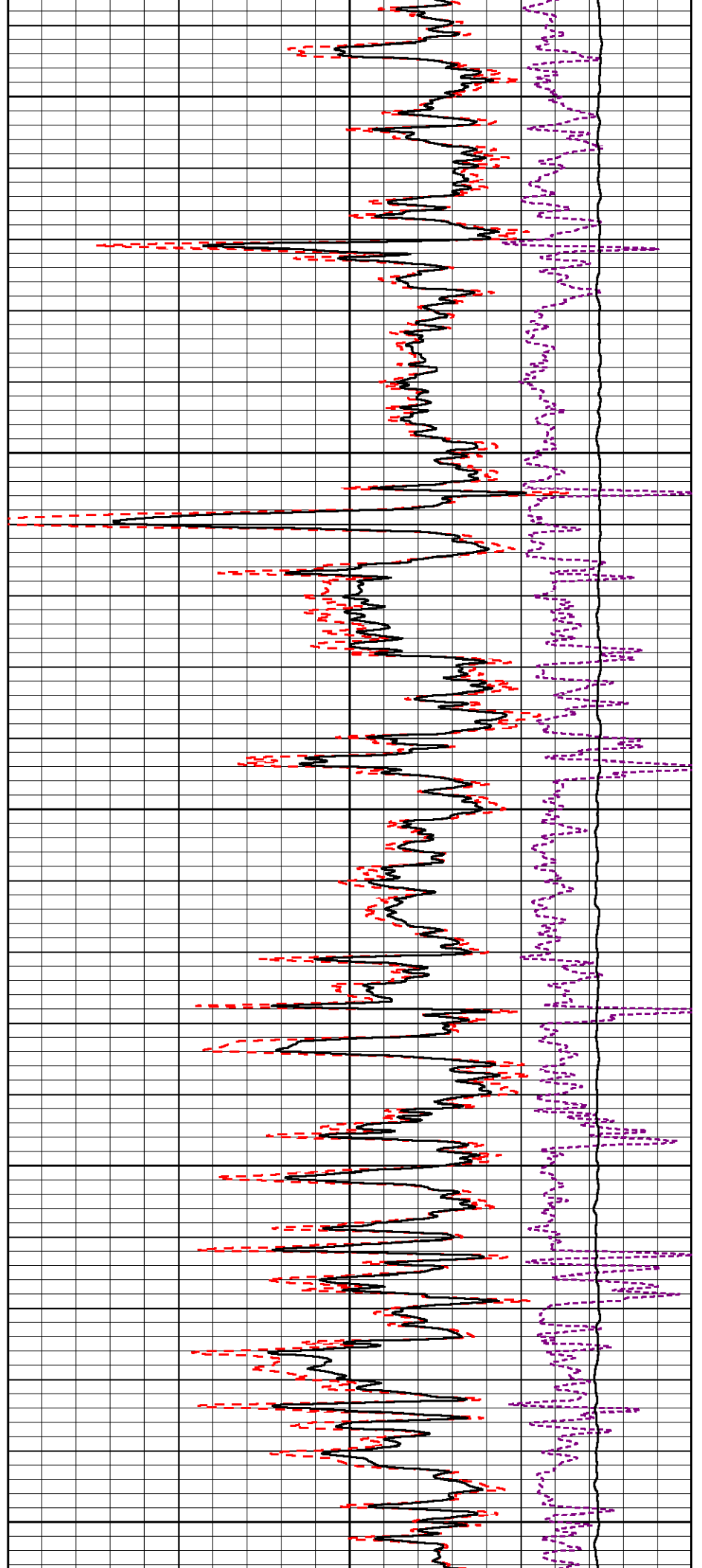
3200

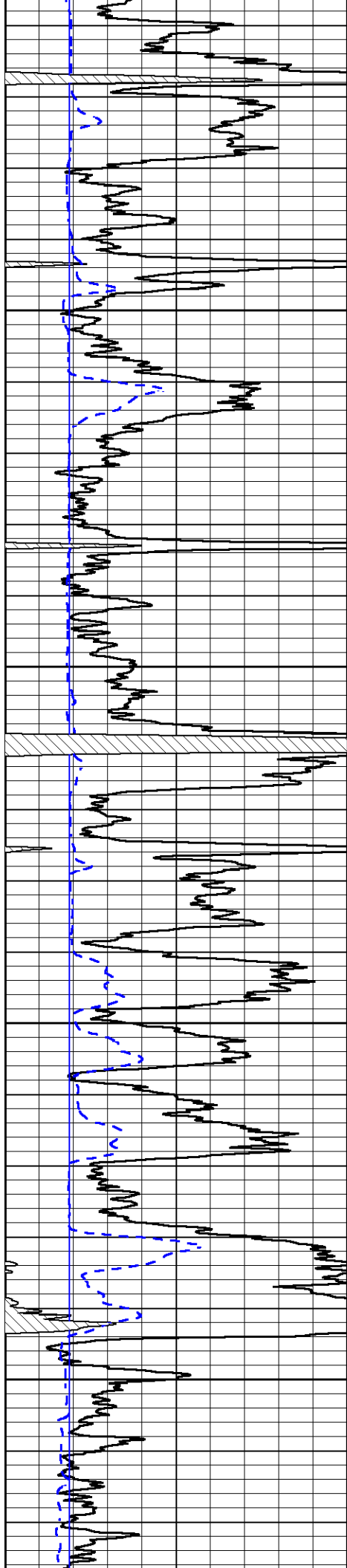
3250

3300

3350

3400



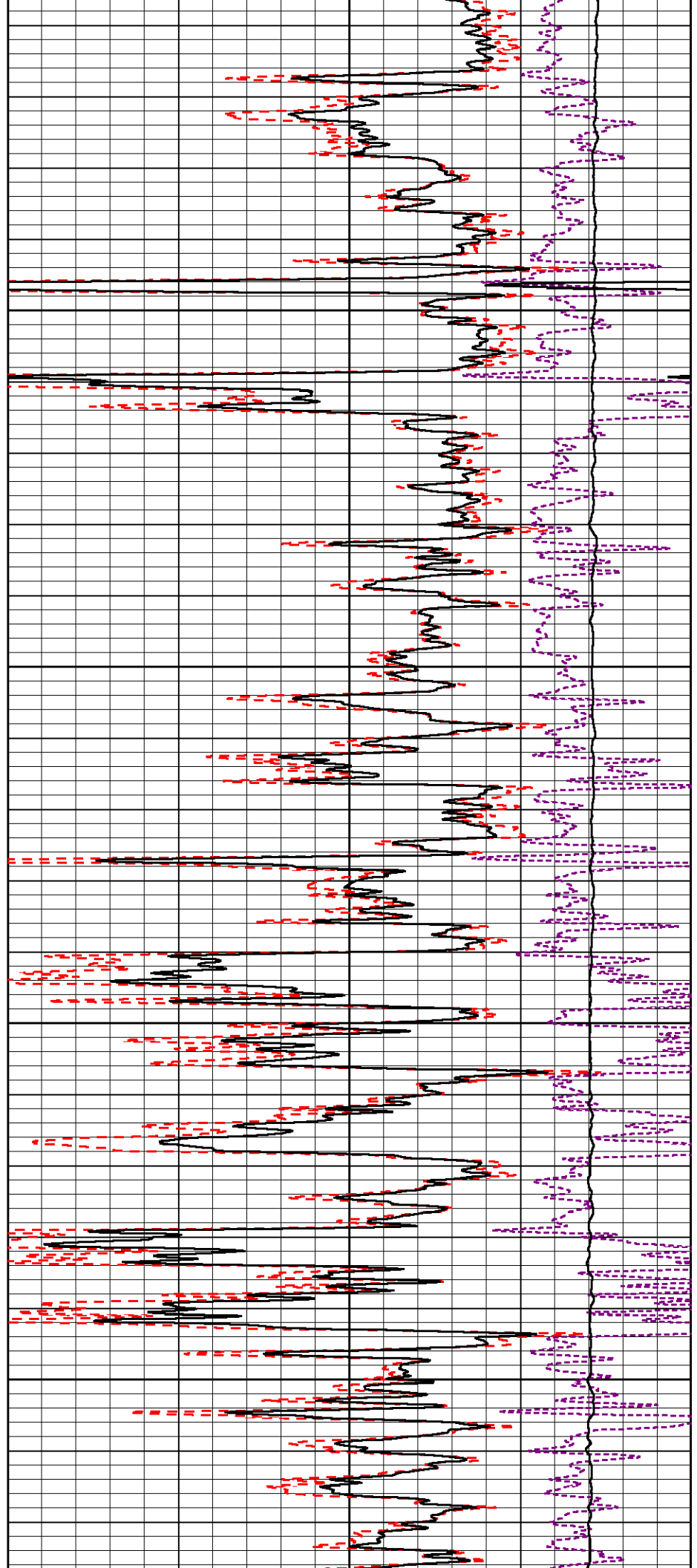


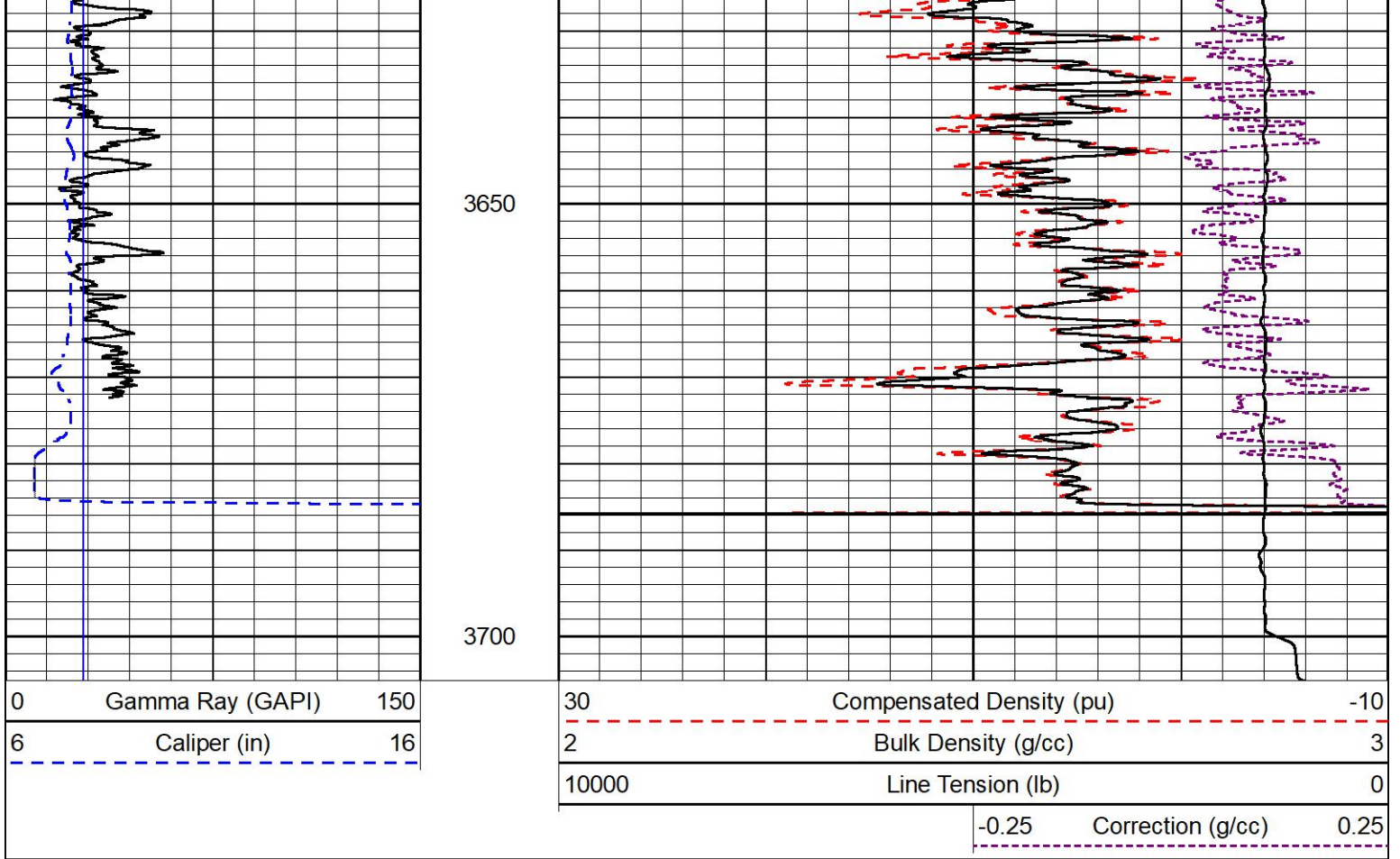
3450

3500

3550

3600

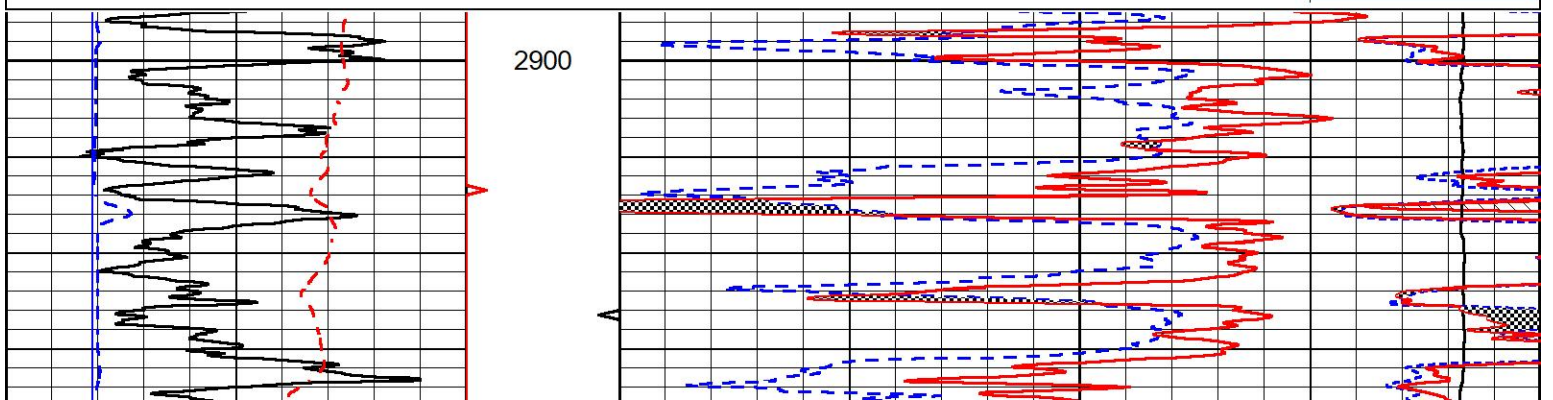
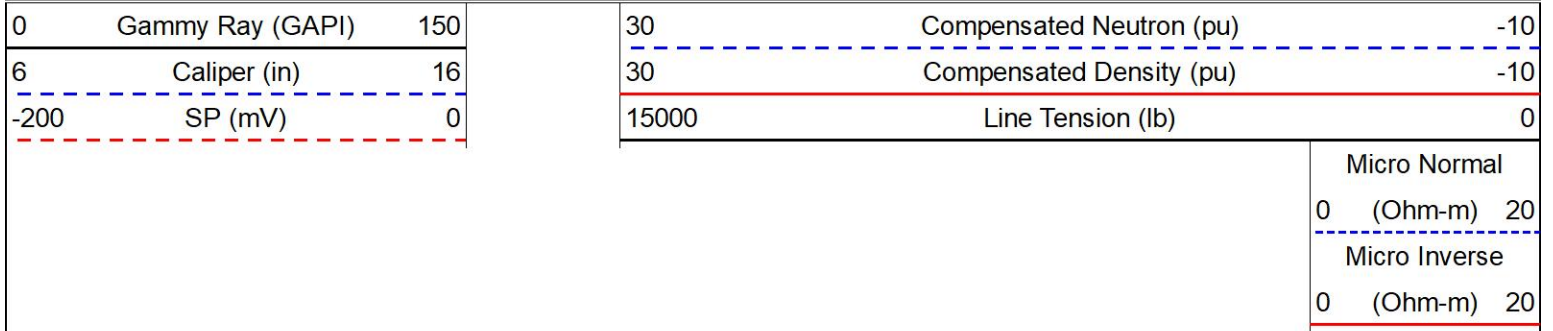


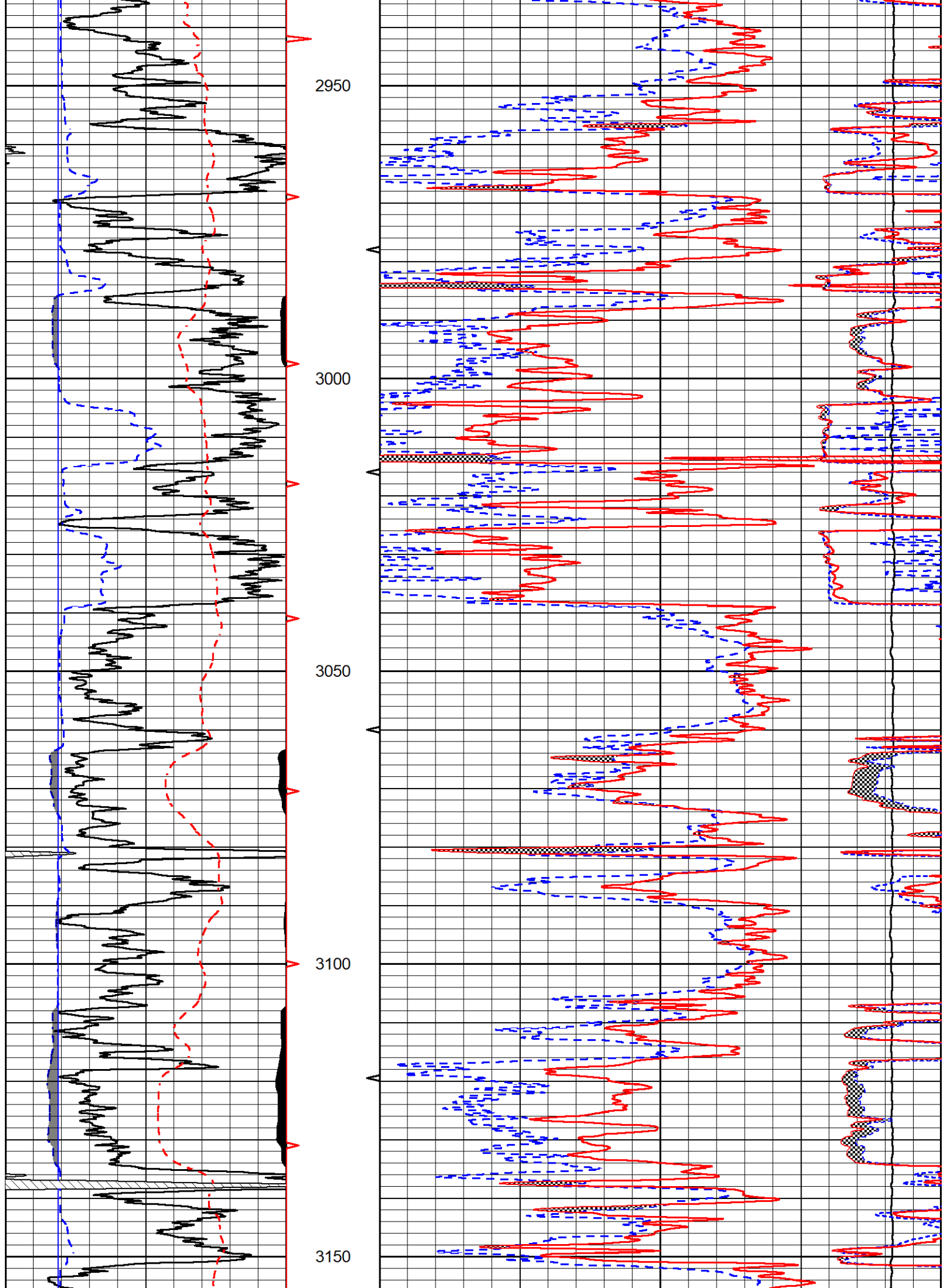


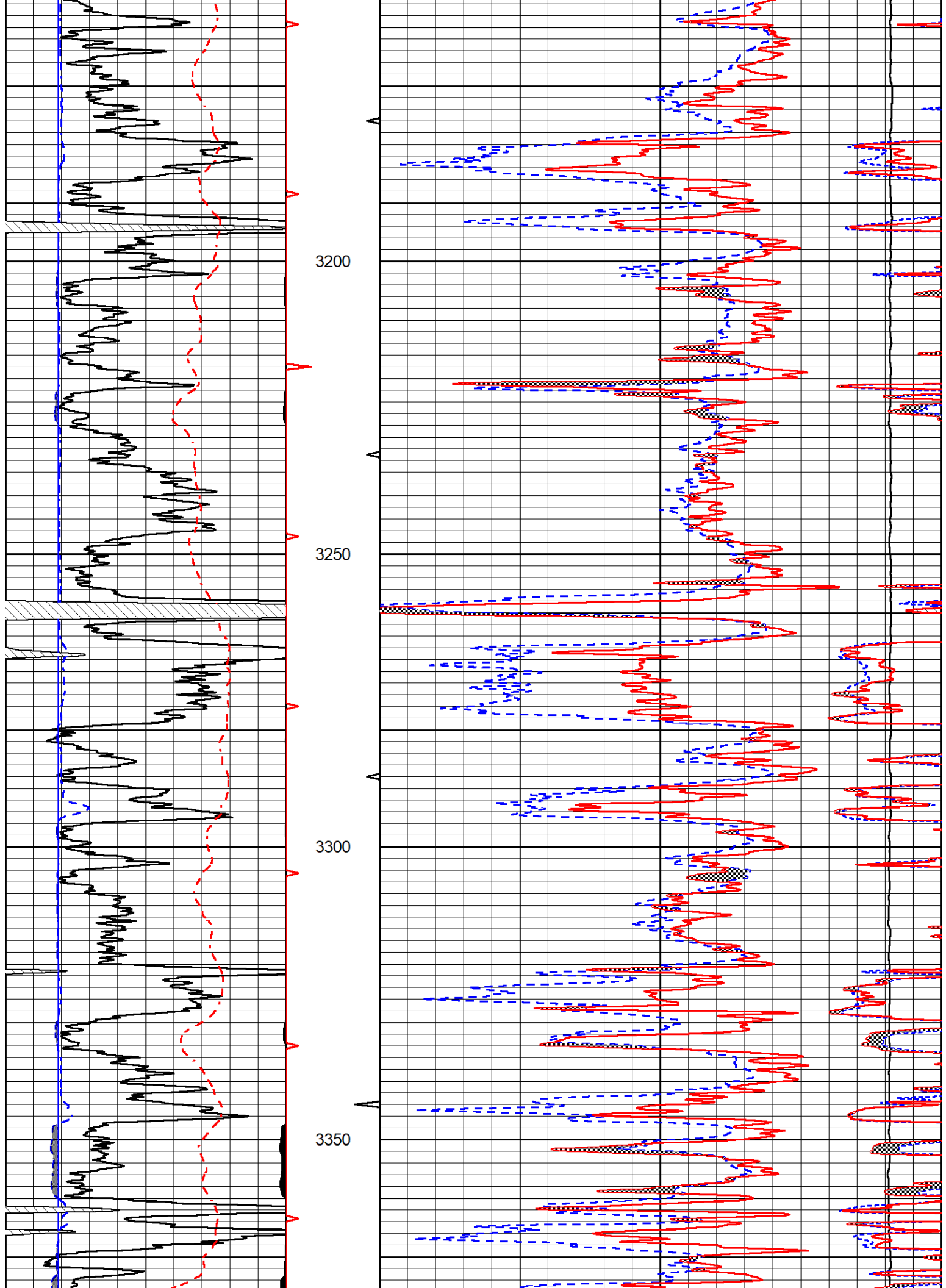
DETAIL SECTION

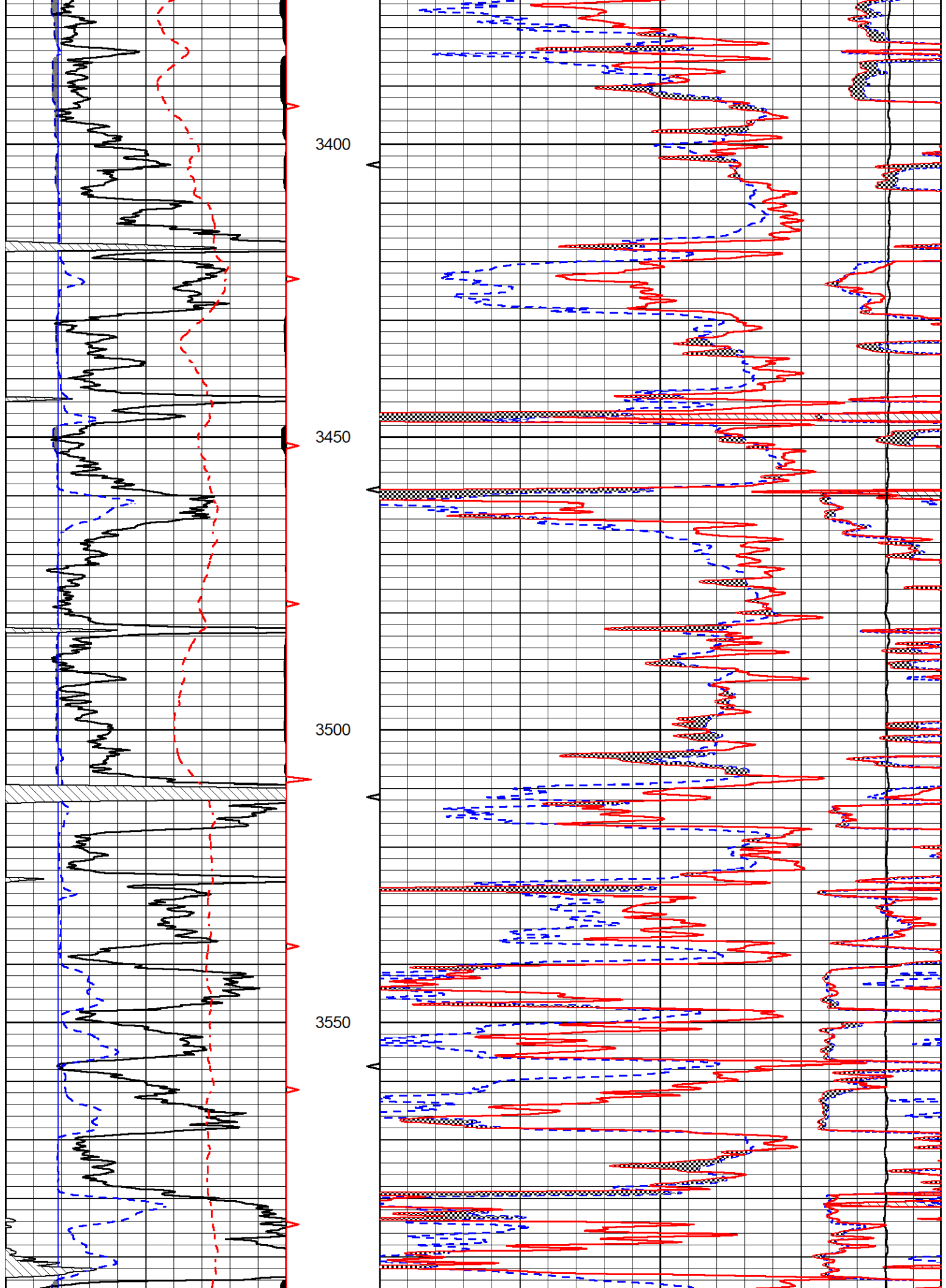
MAIN PASS

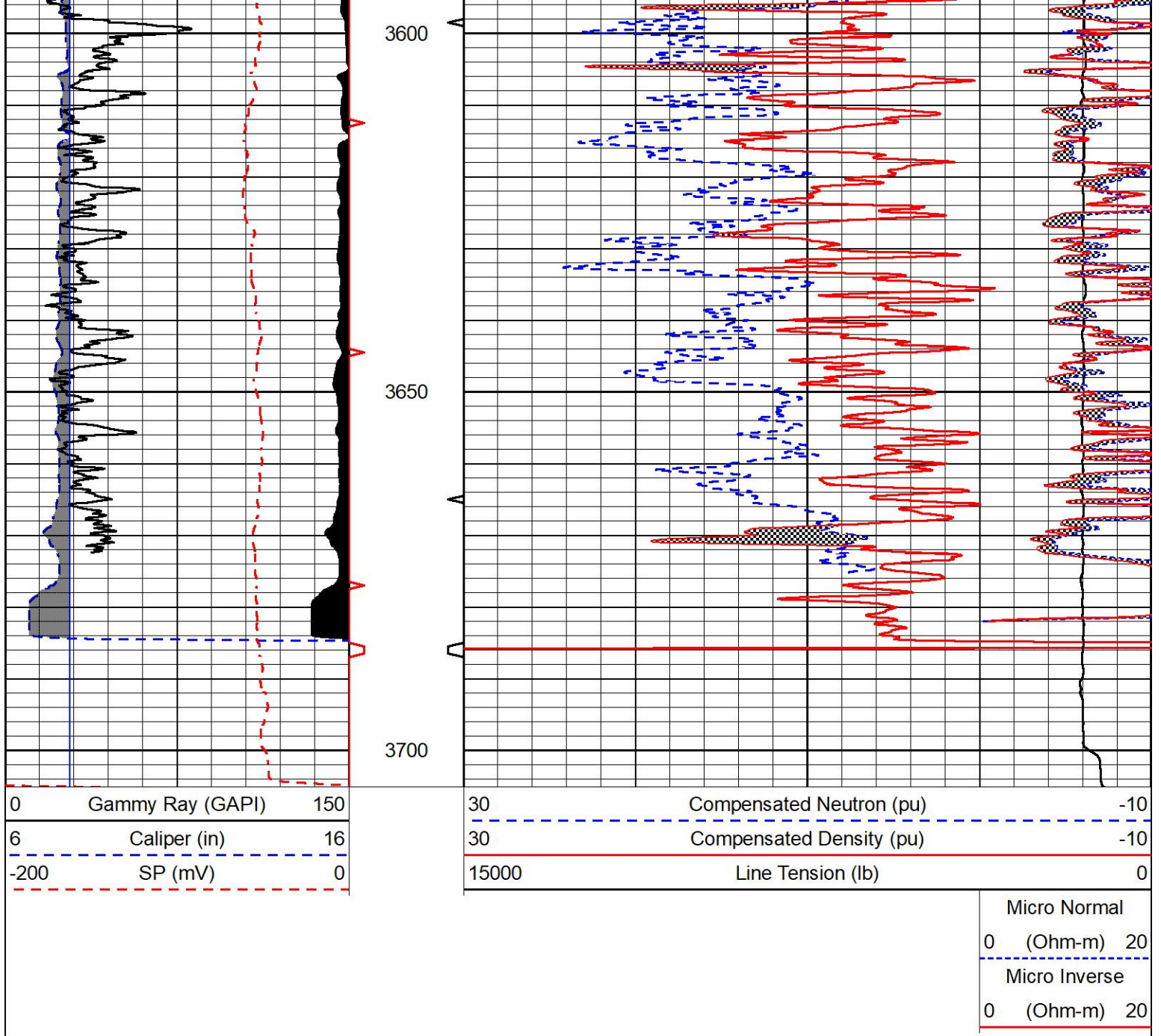
Database File murfin_rusco-davis #7-36.db
 Dataset Pathname Stack/pass3.1
 Presentation Format _CNDLS~2
 Dataset Creation Sun Jan 30 23:57:16 2022
 Charted by Depth in Feet scaled 1:240









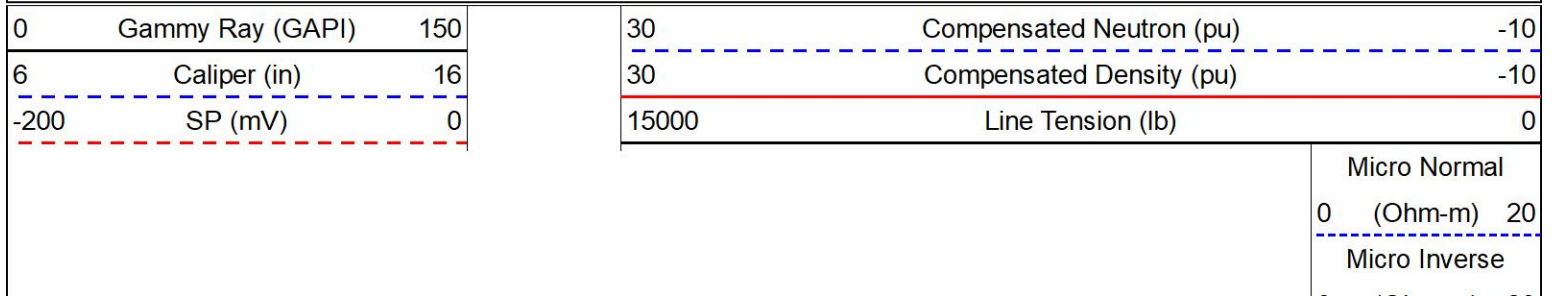


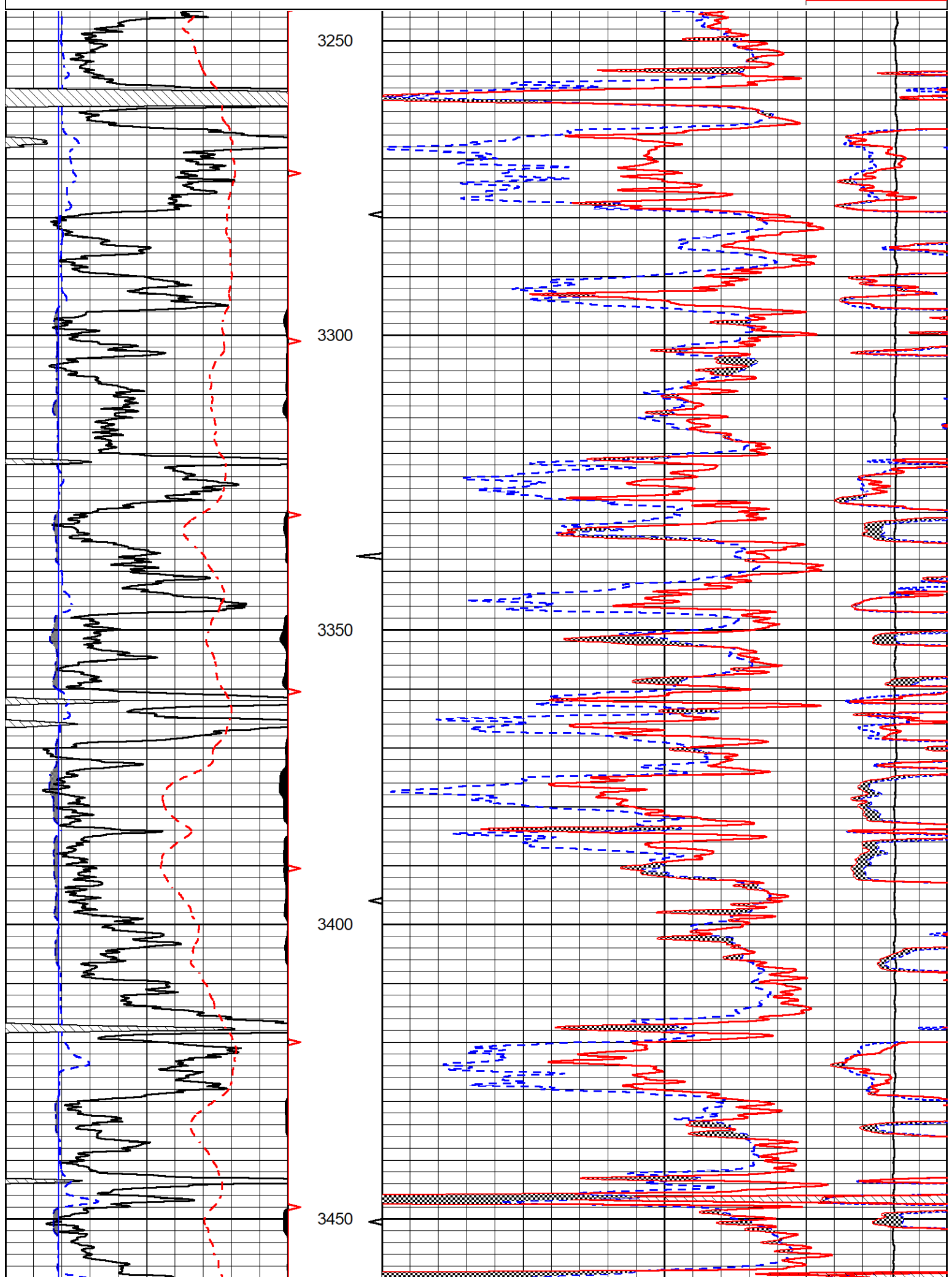
MIDWEST WIRELINE

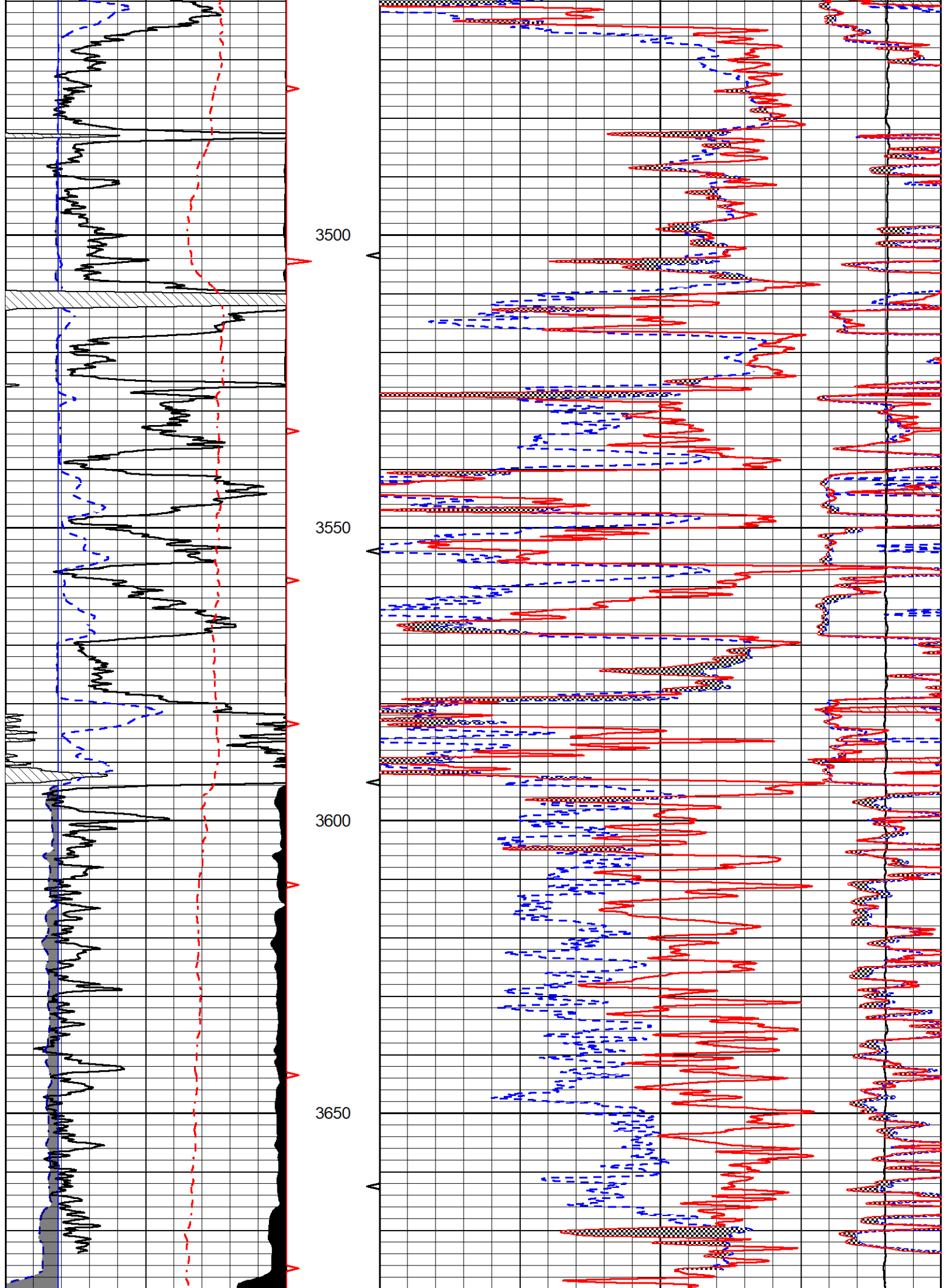
REPEAT SECTION

REPEAT PASS

Database File murfin_rusco-davis #7-36.db
 Dataset Pathname Stack/pass2.1
 Presentation Format _CNDLS~2
 Dataset Creation Sun Jan 30 23:20:44 2022
 Charted by Depth in Feet scaled 1:240







Master Calibration

Detector	Readings	Target	Normalization
Short Space	6240.00 cps	1000.00 cps	1.6025
Long Space	460.00 cps	1000.00 cps	1.9500

Gamma Ray Calibration Report

Serial Number:	101	
Tool Model:	M&W	
Performed:	Mon Jan 24 19:14:46 2022	
Calibrator Value:	500.0	GAPI
Background Reading:	24.0	cps
Calibrator Reading:	637.0	cps
Sensitivity:	0.5500	GAPI/cps



Company	Murfin Drilling Company, Inc.
Well	Rusco-Davis #7-36
Field	Star West
County	Ellis
State	Kansas