



MIDWEST WIRELINE

BOREHOLE COMPENSATED SONIC LOG

Company: Murfin Drilling Company, Inc.
 Well: Rusco-Davis #7-36
 Field: Star West
 County: Ellis
 State: Kansas

Company: Murfin Drilling Company, Inc.
 Well: Rusco-Davis #7-36
 Field: Star West
 County: Ellis
 State: Kansas

Location: API #: 15-051-27023-00-00
 NE NE NW SE
 2430 FSL & 1330 FEL
 SEC 36 TWP 11S RGE 20W
 Permanent Datum: Ground Level Elevation 2017
 Log Measured From: Kelly Bushing
 Drilling Measured From: Kelly Bushing
 Other Services: CNL/CDL MEL/DIL
 Elevation: K.B. 2022
 D.F. G.L. 2017

Date	1/30/2022						
Run Number	Two						
Type Log	BHGS						
Depth Driller	3701						
Depth Logger	3700						
Bottom Logged Interval	3689						
Top Logged Interval	250						
Type Fluid In Hole	Chemical						
Salinity, PPM CL	5200						
Density	9.0						
Level	Full						
Max. Rec. Temp. F	113						
Operating Rig Time	5 Hours						
Equipment -- Location	P-24 Hays						
Recorded By	T. Martin						
Witnessed By	Kent Matson						
Borehole Record							
Run No.	Bit	From	To	Size	Wgt.	From	To
One	12.25	00	265	8.625	23	00	265
Two	7.875	265	TD				
Casing Record							

<<< Fold Here >>>

All interpretations are opinions based on inferences from electrical or other measurements and Midwest Wireline LLC cannot and does not guarantee the accuracy or correctness of any interpretation, and Midwest Wireline LLC will not be liable or responsible for any loss, costs, damages, or expenses incurred or sustained by anyone resulting from any interpretation made by any of our officers, agents or employees.

Comments

N/A DENOTES NOT AVAILABLE OR NON-APPLICABLE.

Yocemento, N to Homestead Rd,
3 W, N into

Log Measured From: Kelly Bushing 5 Ft. Above Permanent Datum

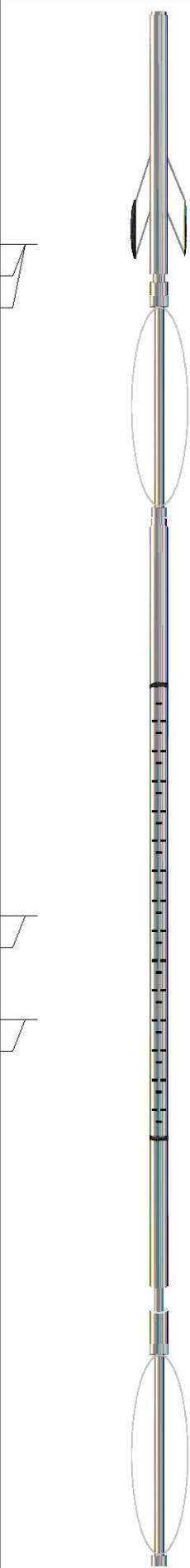
THANK YOU FOR USING MIDWEST WIRELINE LLC
785-625-3858

Your Midwest Wireline Crew

Engineer: T. Martin
 Operator:
 Operator:
 Operator:

This Log Record Was Witnessed By

Primary Witness: Kent Matson
 Secondary Witness:
 Secondary Witness:
 Secondary Witness:

Sensor	Offset (ft)	Schematic	Description	Length (ft)	O.D. (in)	Weight (lb)
MCAL MI MN	25.42 25.42 25.42		ML-Pengo (Pengo1)	5.50	3.50	100.00
			CENT-PENGO (4-PENGO)	4.25	3.00	70.00
WVF4 WVF1	12.50 12.50		SLT-PENGO (601)	15.92	3.50	300.00
WVF3 WVF2	10.50 10.50					
			CENT-PENGO (3-PENGO)	4.25	3.00	70.00

Dataset: murfin_rusco-davis #7-36.db: field/well/SONMEL/pass3
 Total length: 29.92 ft
 Total weight: 540.00 lb
 O.D.: 3.50 in

Log Variables

DatabaseC:\ProgramData\Warrior\Data\murfin_rusco-davis #7-36.db
 Dataset field/well/Stack/pass3.1/_vars_

Top - Bottom

A	BOREID in	BOTTEMP degF	CASEOD in	CASETHCK in	FLUIDDEN g/cc	M	MATRXDEN g/cc
1	7.875	113	5.5	0	1	2	2.71
NPORSEL	PERFS	SNDERR mmho/m	SNDERRM mmho/m	SPSHIFT mV	SRFTEMP degF	SZCOR	TDEPTH ft
Limestone	0	0	0	385	50	Off	3700

Variable Description

A : Cement Factor (a)
 BOREID : Borehole I.D.
 BOTTEMP : Bottom Hole Temperature
 CASEOD : Casing O.D.
 CASETHCK : Casing Thickness
 FLUIDDEN : Fluid Density
 M : Cement Exp (m)
 MATRXDEN : Matrix Density

NPORSEL : Neutron Porosity Curve Select
 PERFS : Perforation Flag
 SNDERR : Deep Sonde Error Correction
 SNDERRM : Medium Sonde Error Correction
 SPSHIFT : S.P. Baseline Offset
 SRFTEMP : Surface Temperature
 SZCOR : CN Size Cor. ?
 TDEPTH : Total Depth

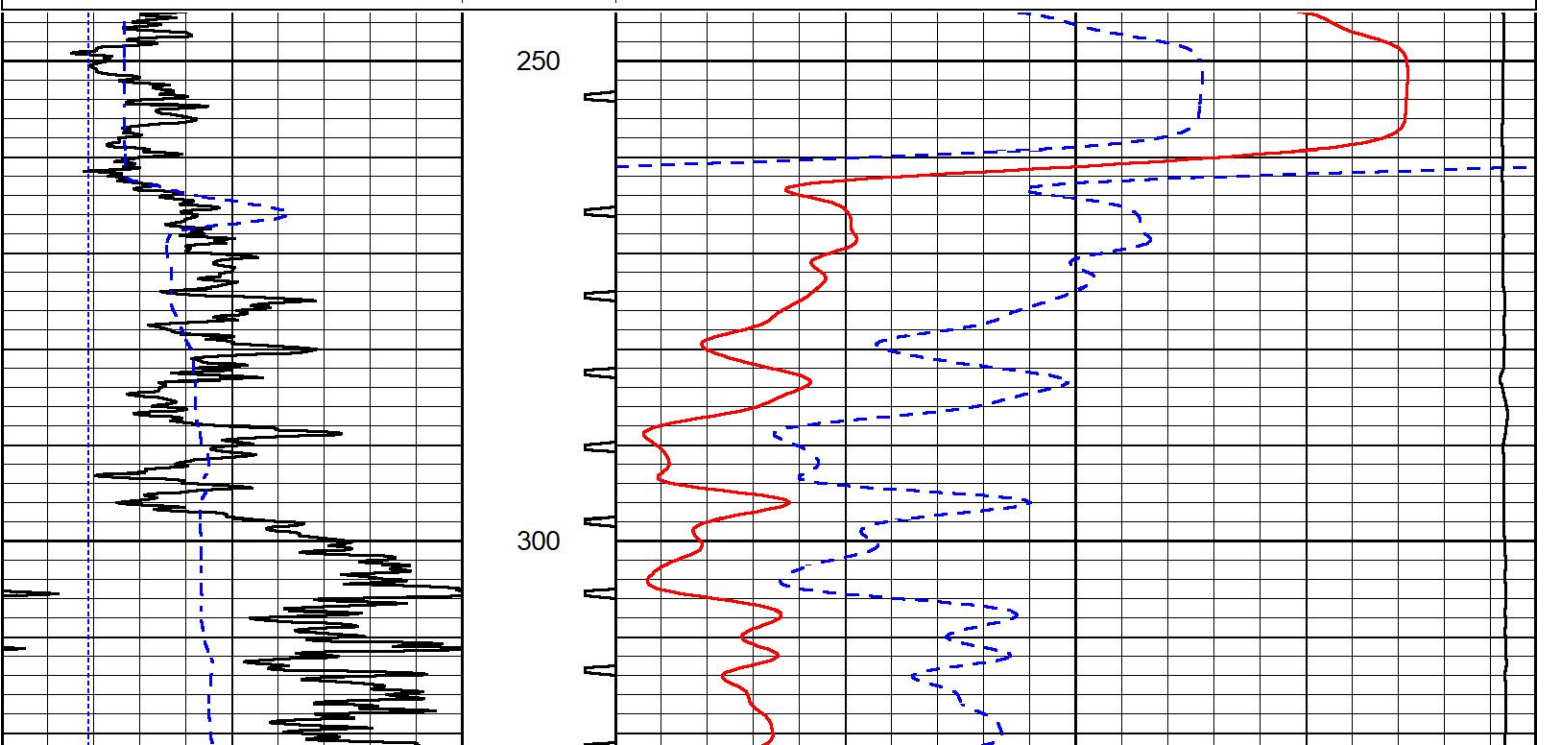


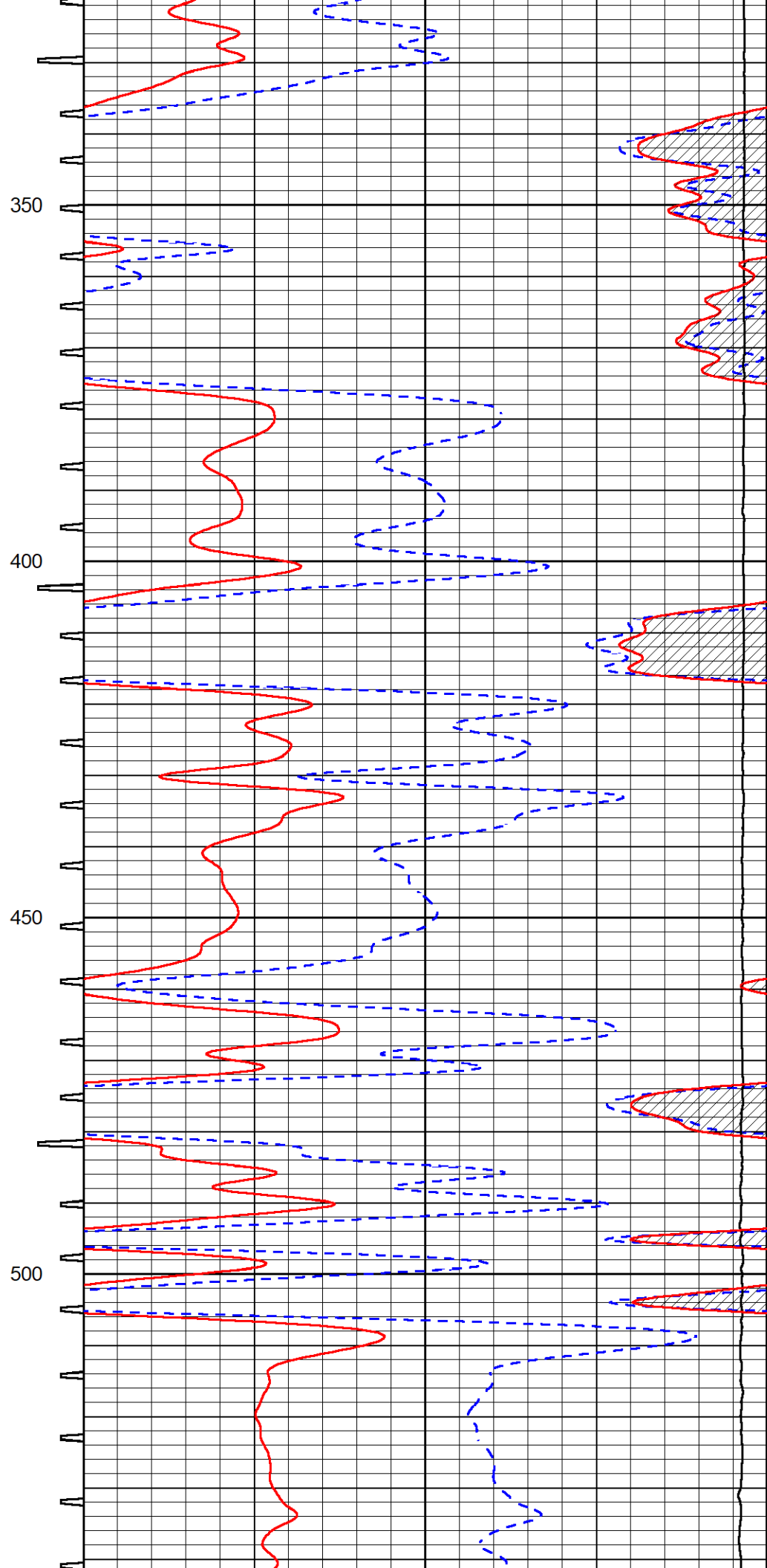
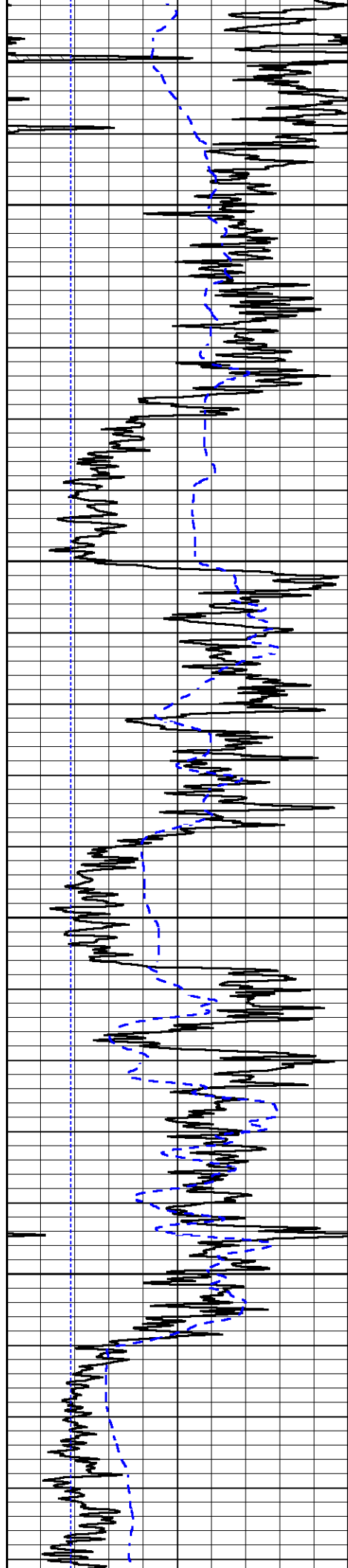
DETAIL SECTION

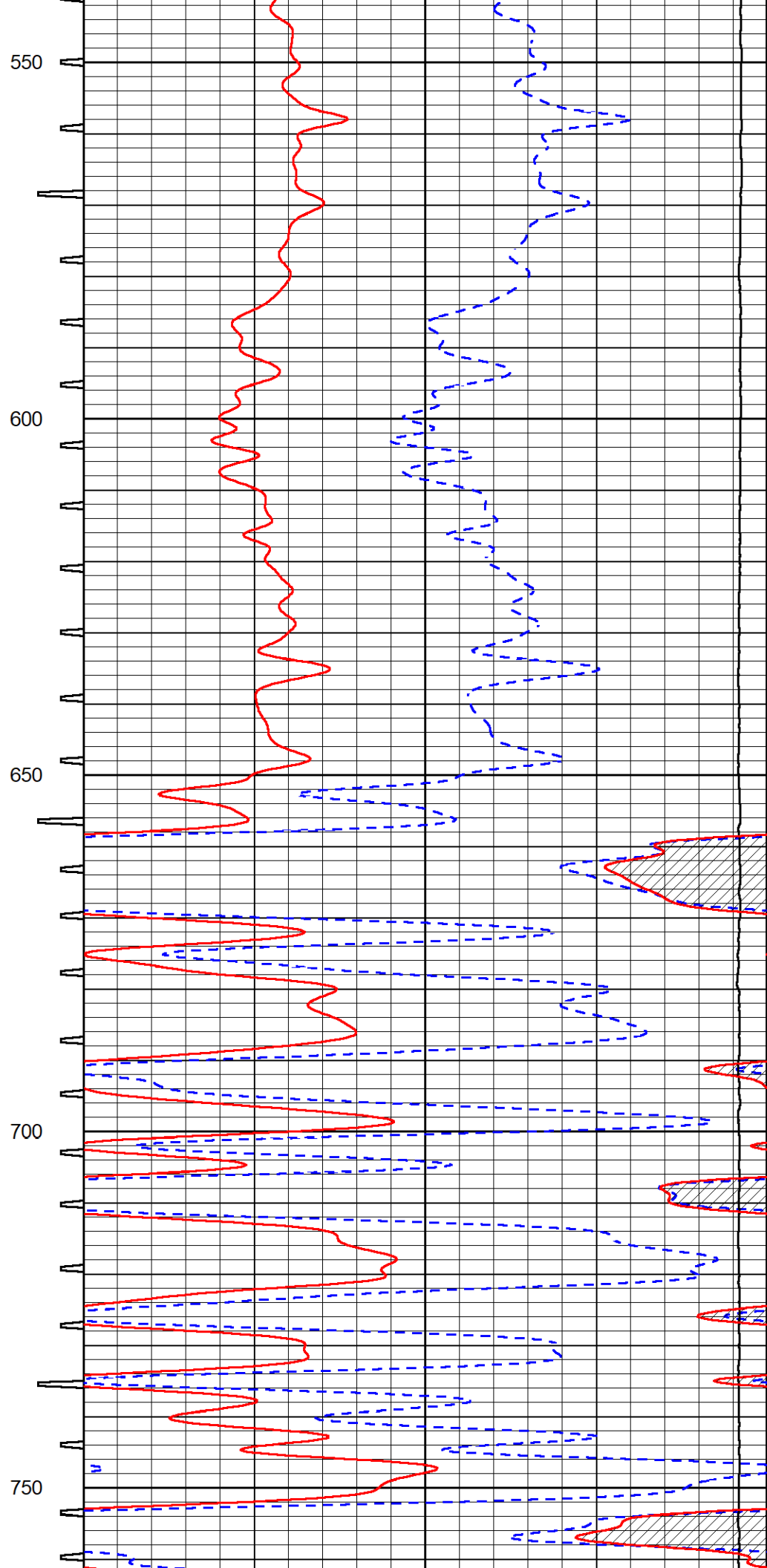
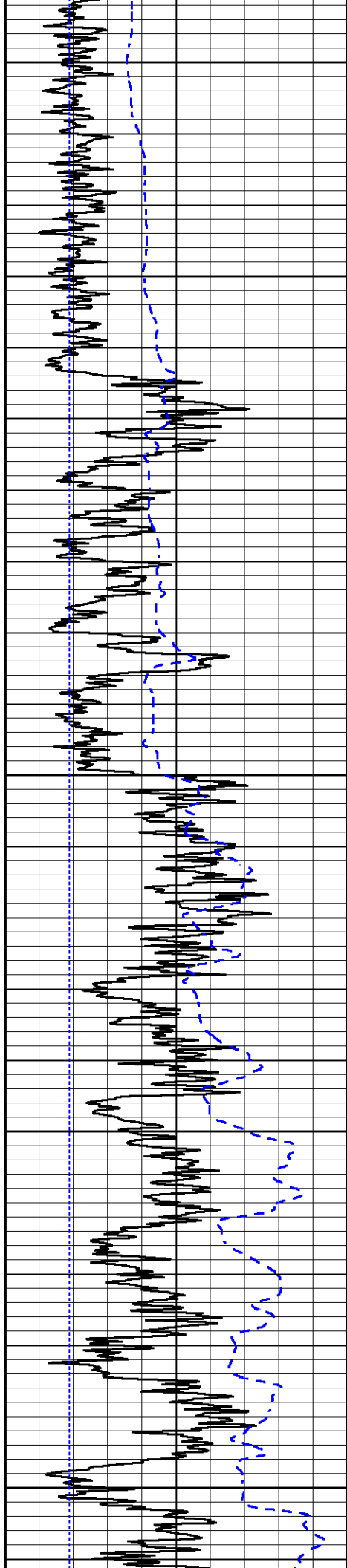
MAIN PASS

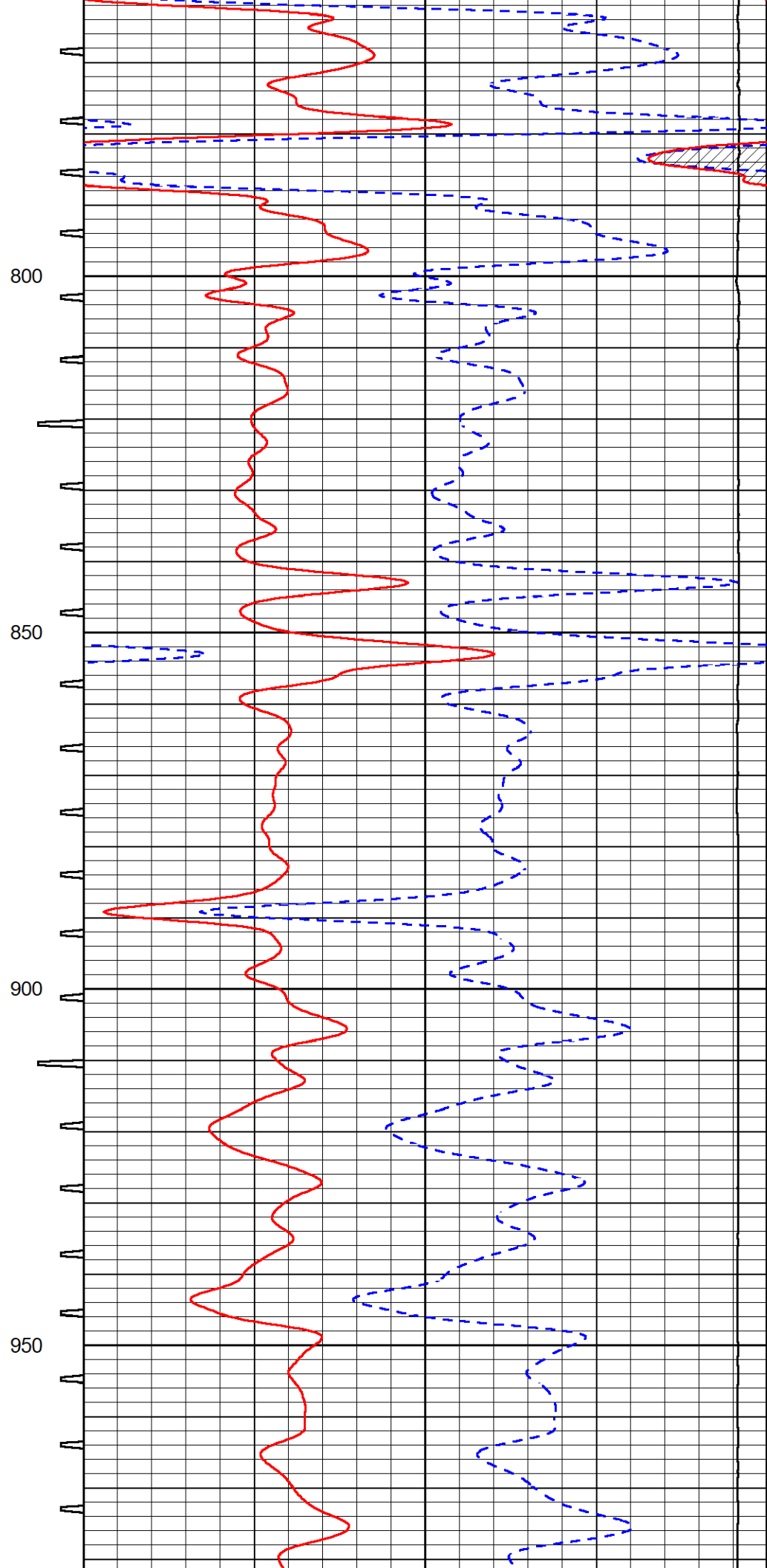
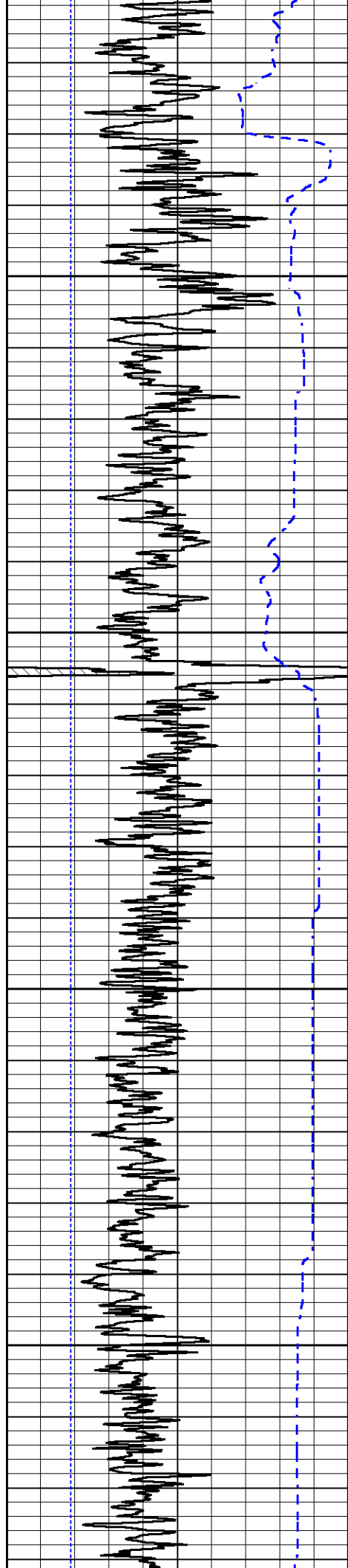
Database File murfin_rusco-davis #7-36.db
 Dataset Pathname Stack/pass3.1
 Presentation Format _sonic
 Dataset Creation Sun Jan 30 23:57:16 2022
 Charted by Depth in Feet scaled 1:240

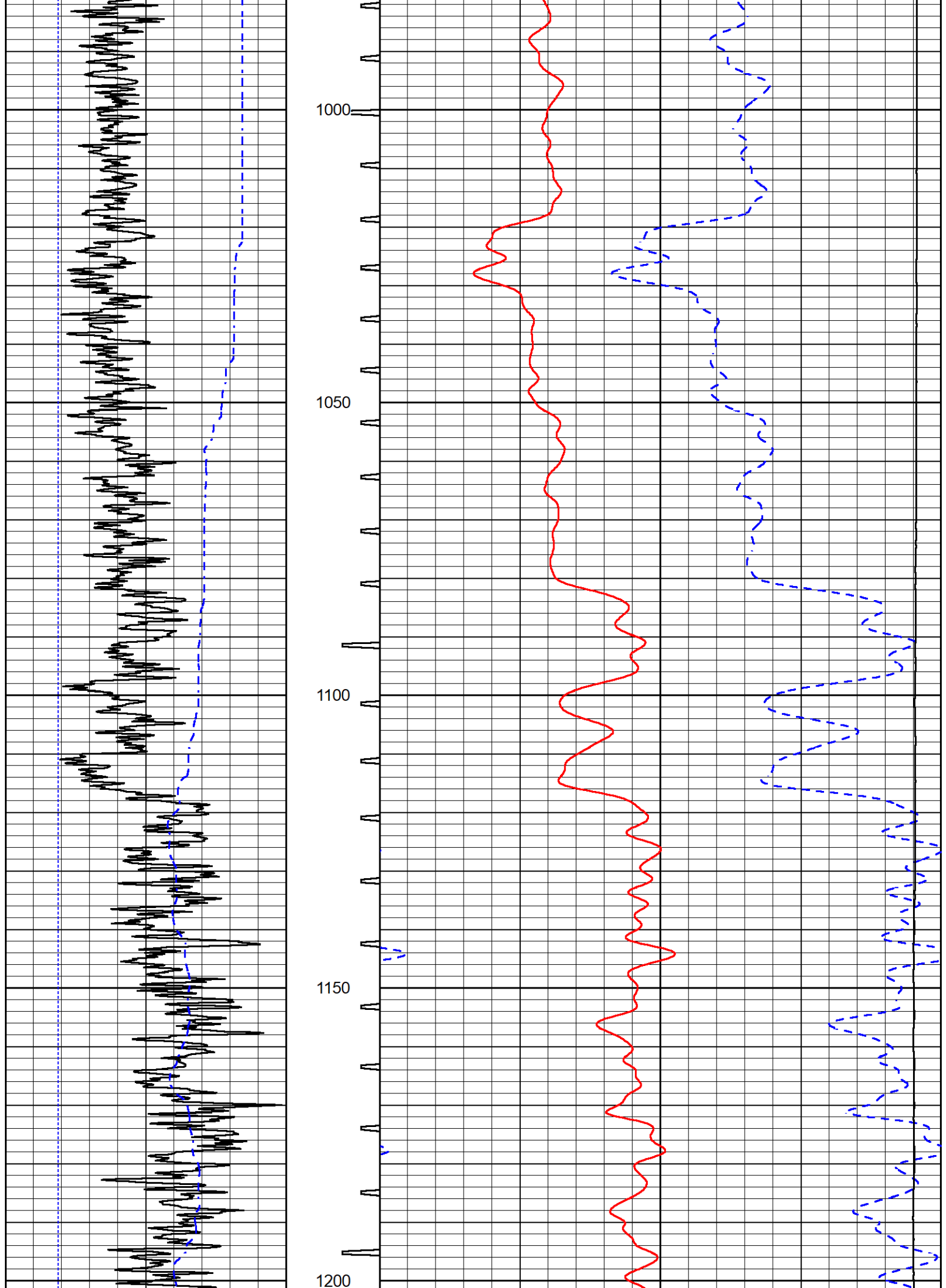
0	Gamma Ray (GAPI)	150	Sonic Int	140	Delta Time (usec/ft) (usec/ft)	40
150	GR (GAPI)	300	5 (msec) 0	30	Sonic Porosity (pu) (pu)	-10
6	Caliper (in)	16		15000	Line Tension (lb)	0

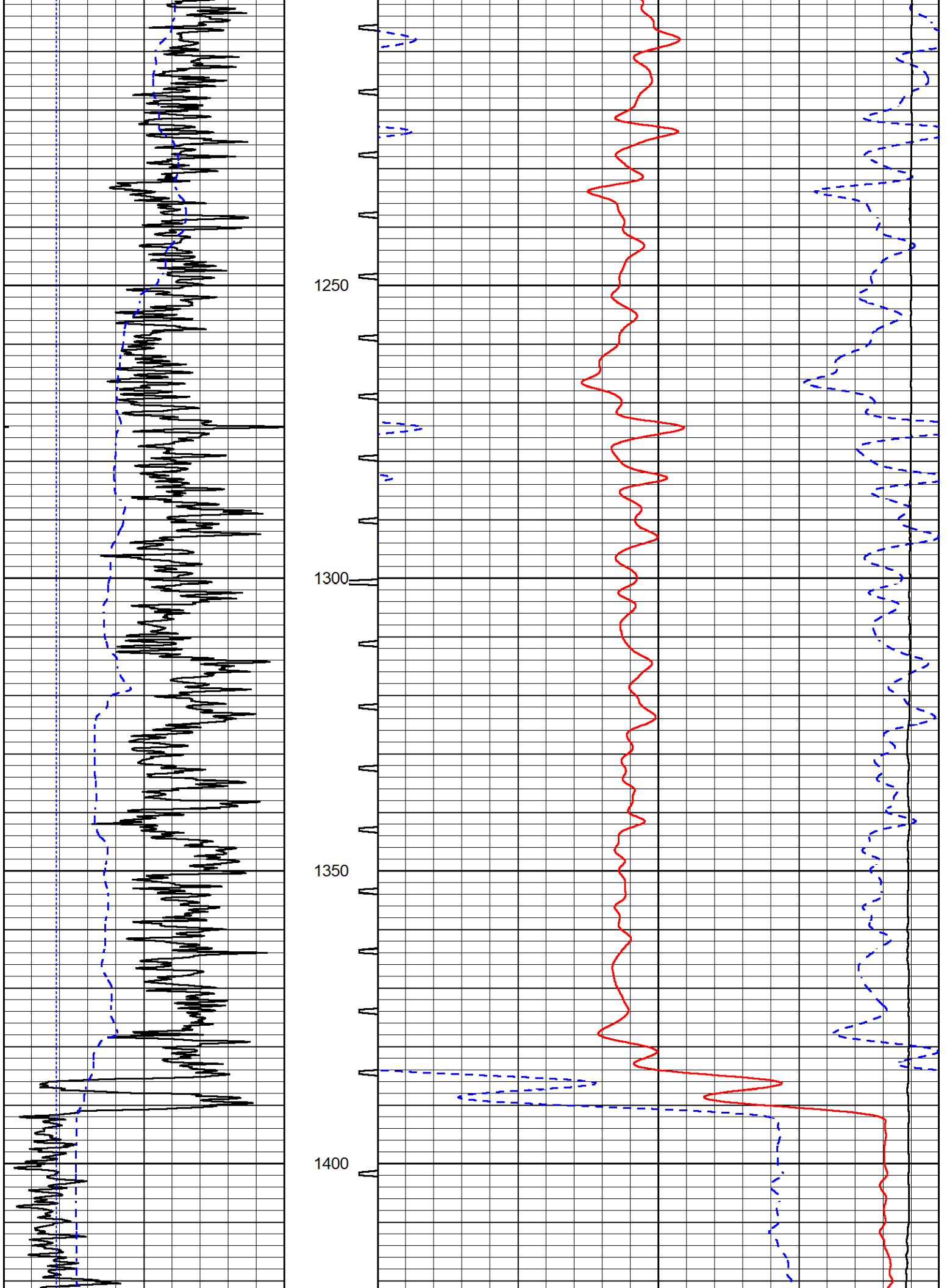


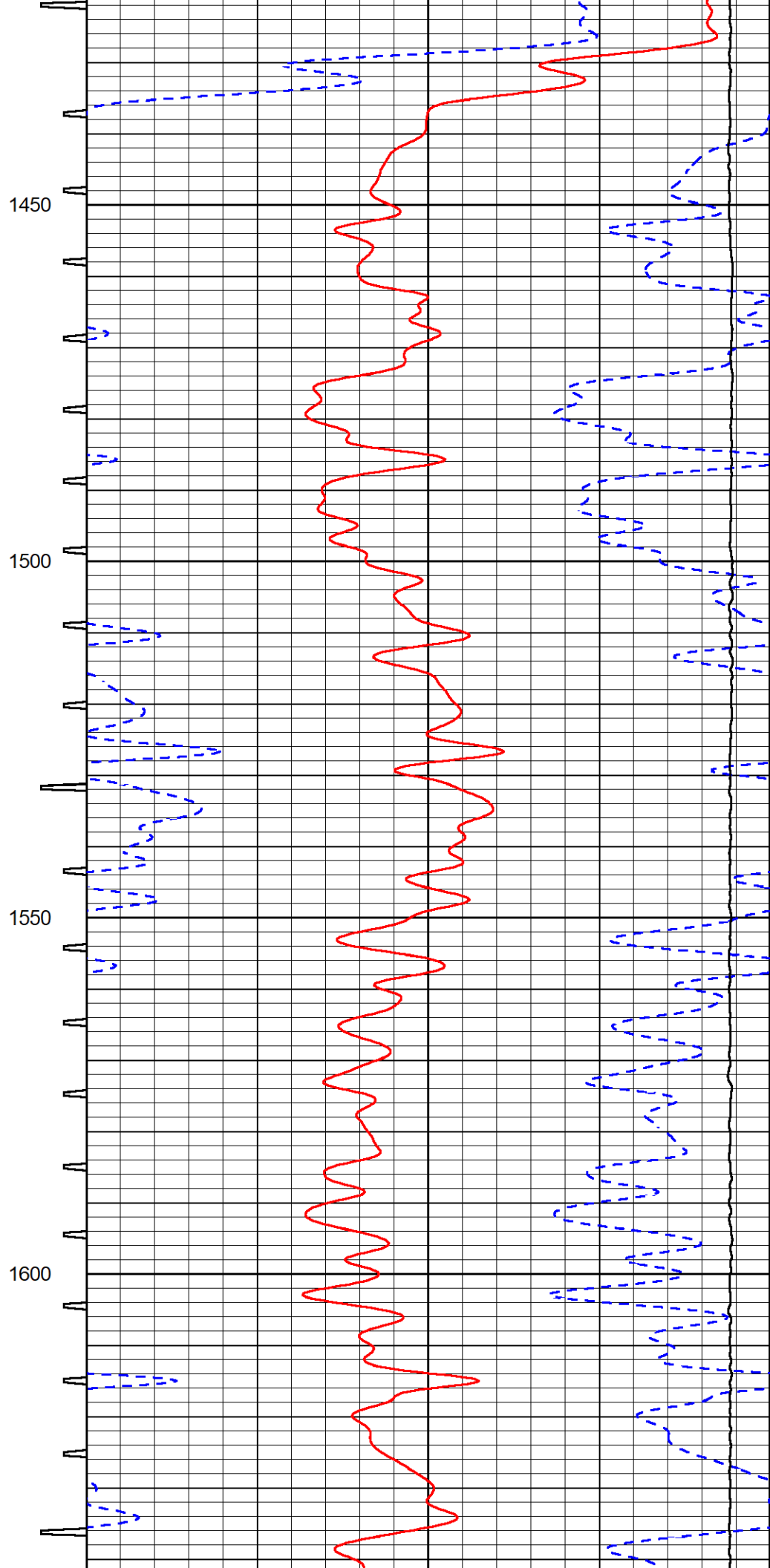
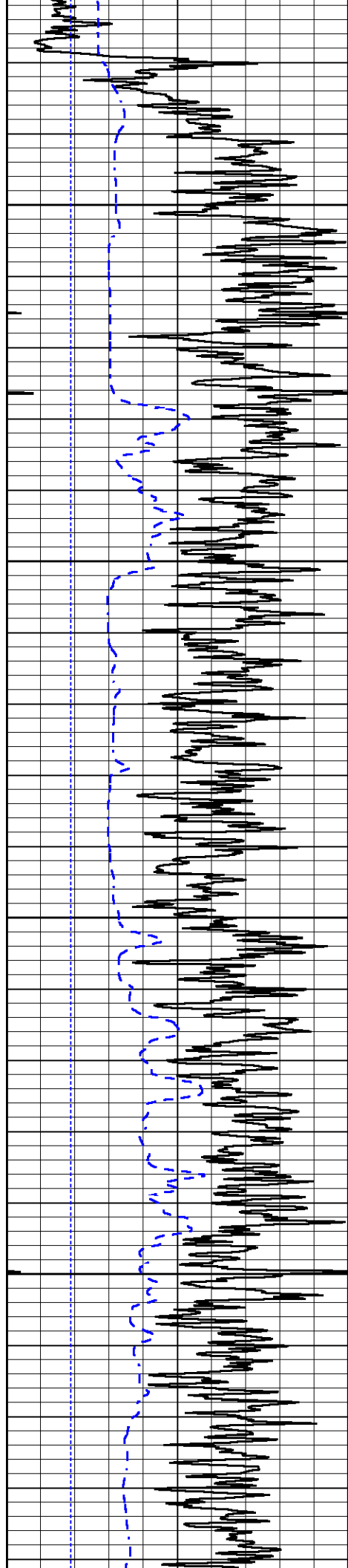


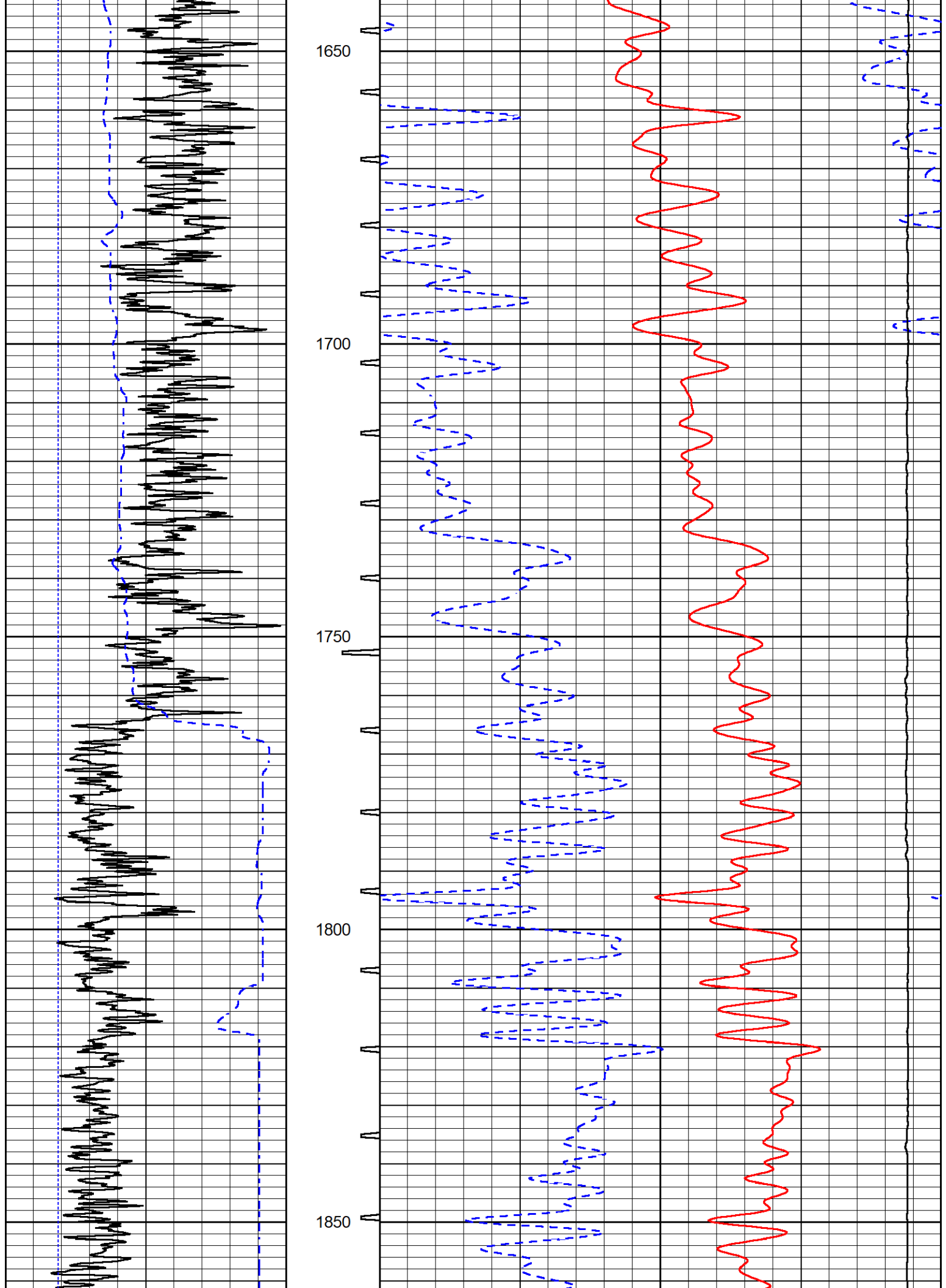


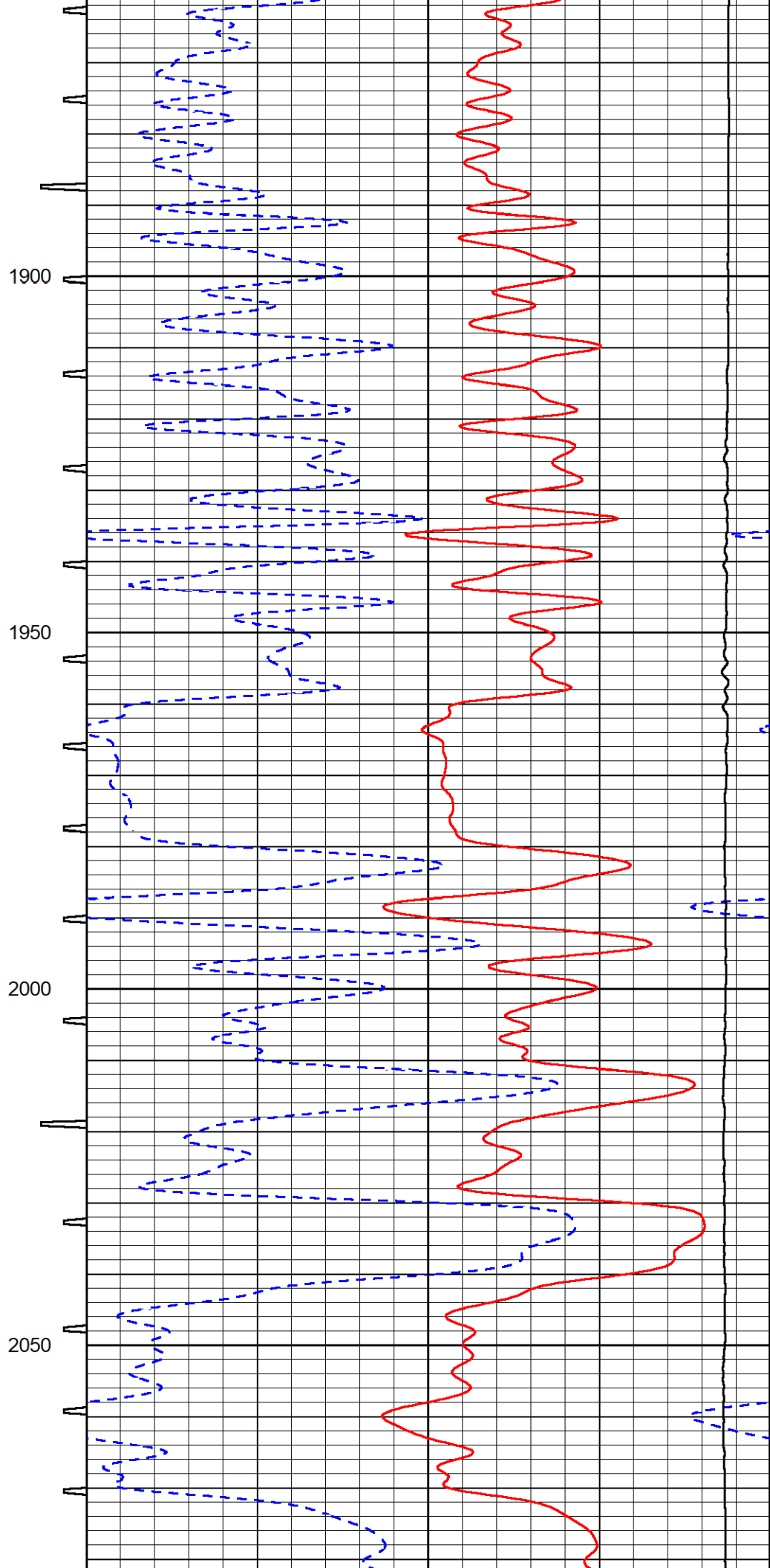
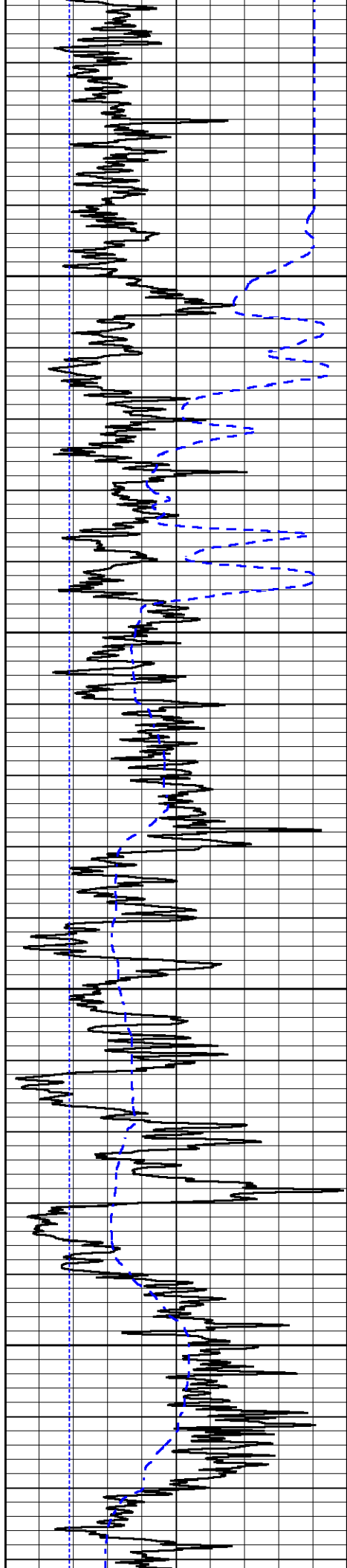


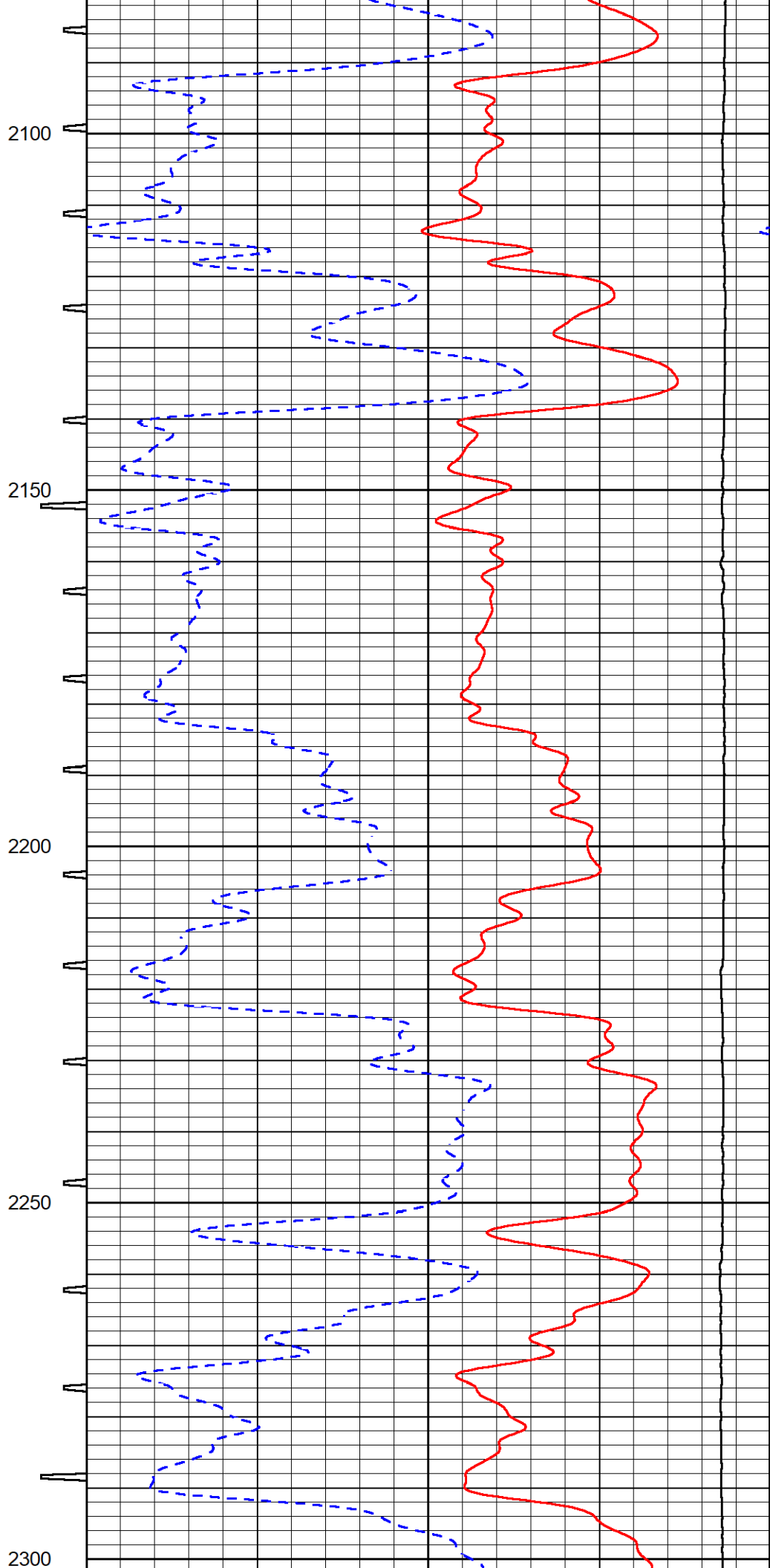
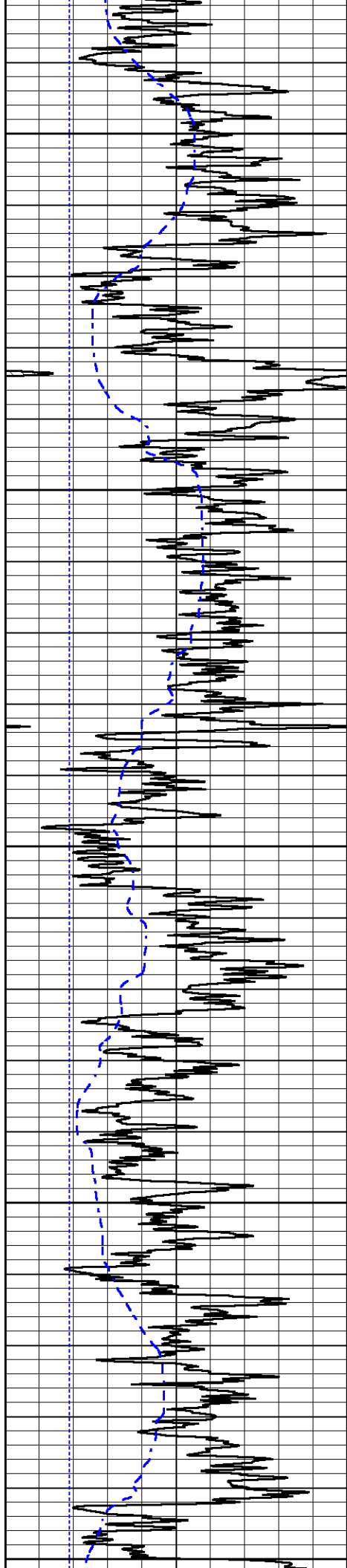


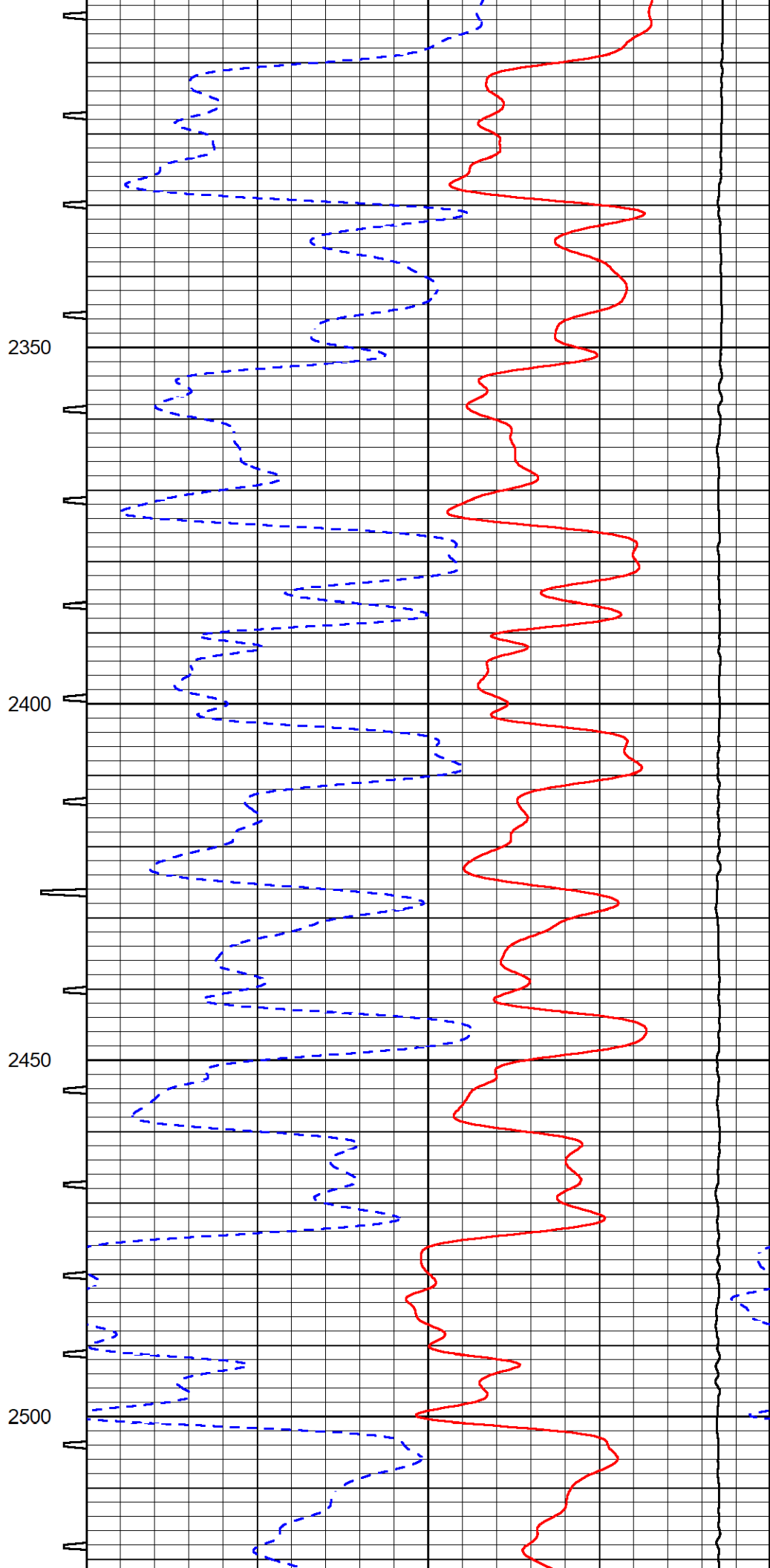
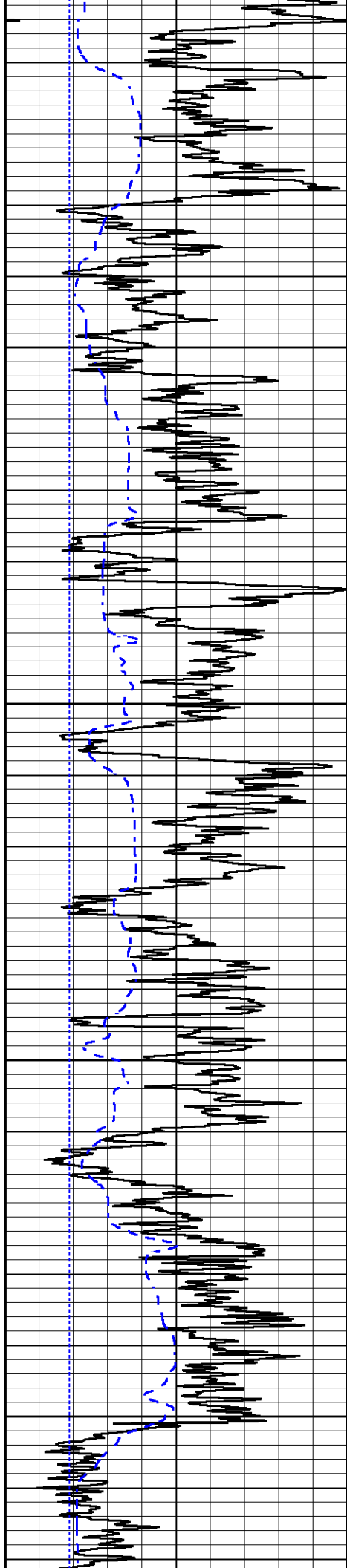


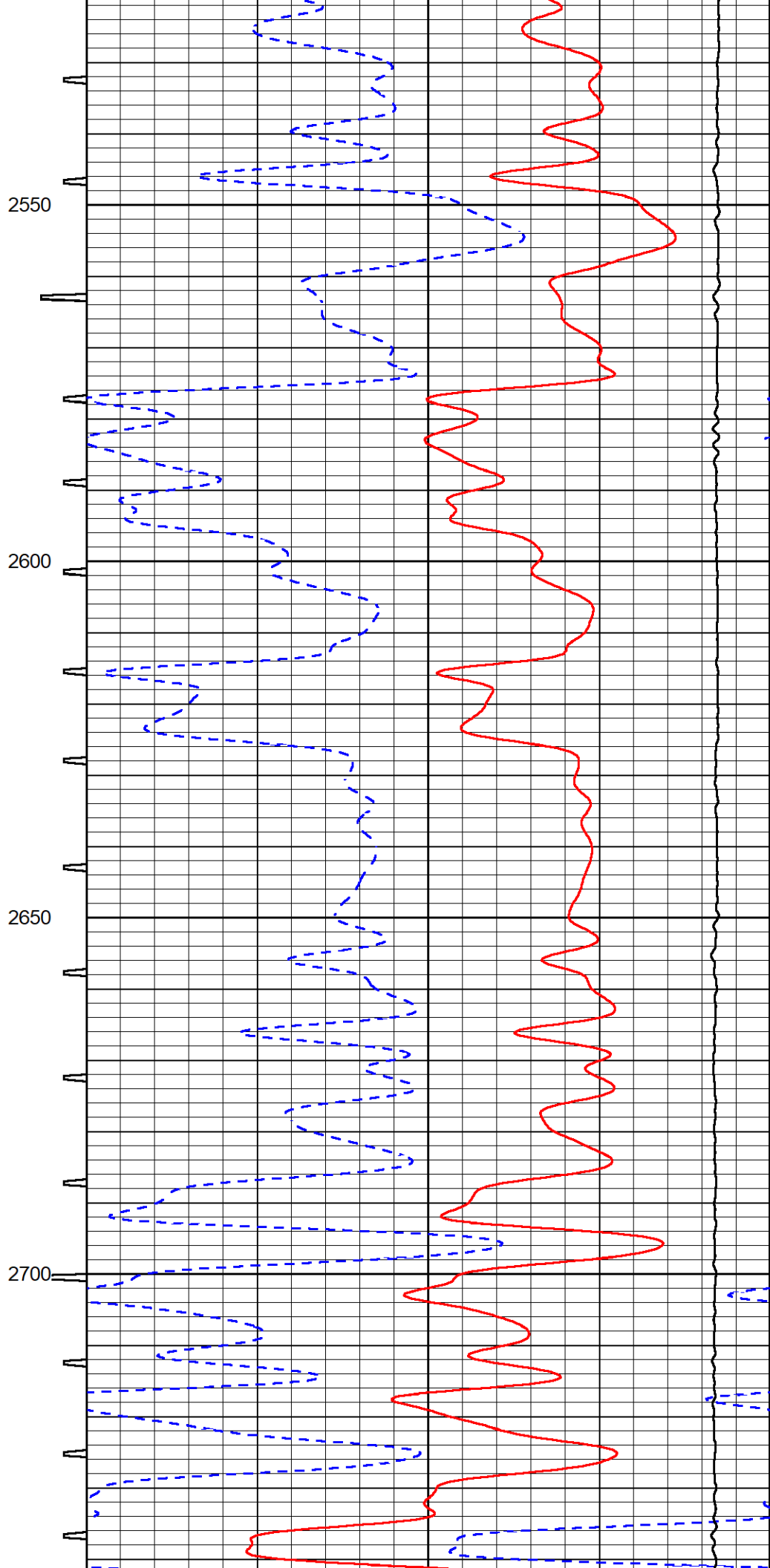
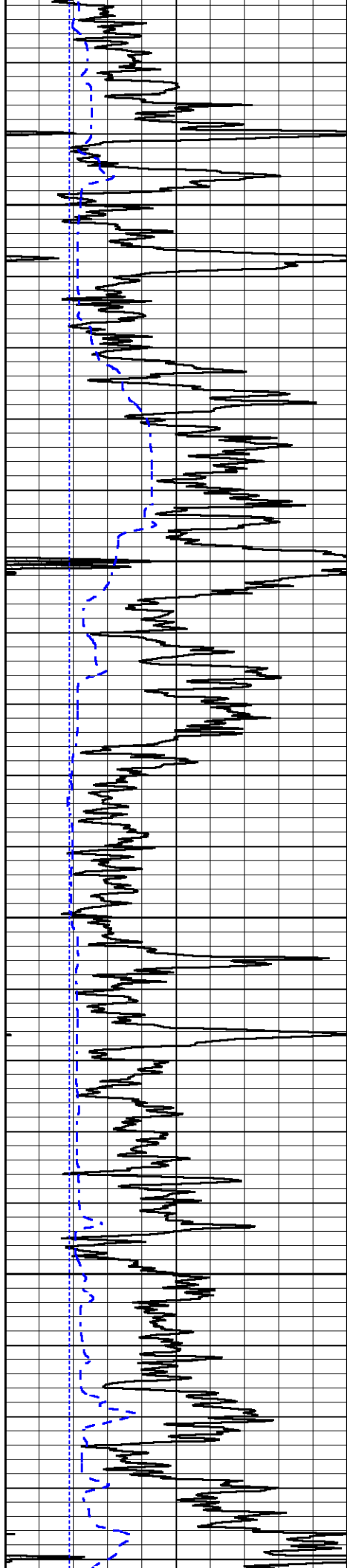










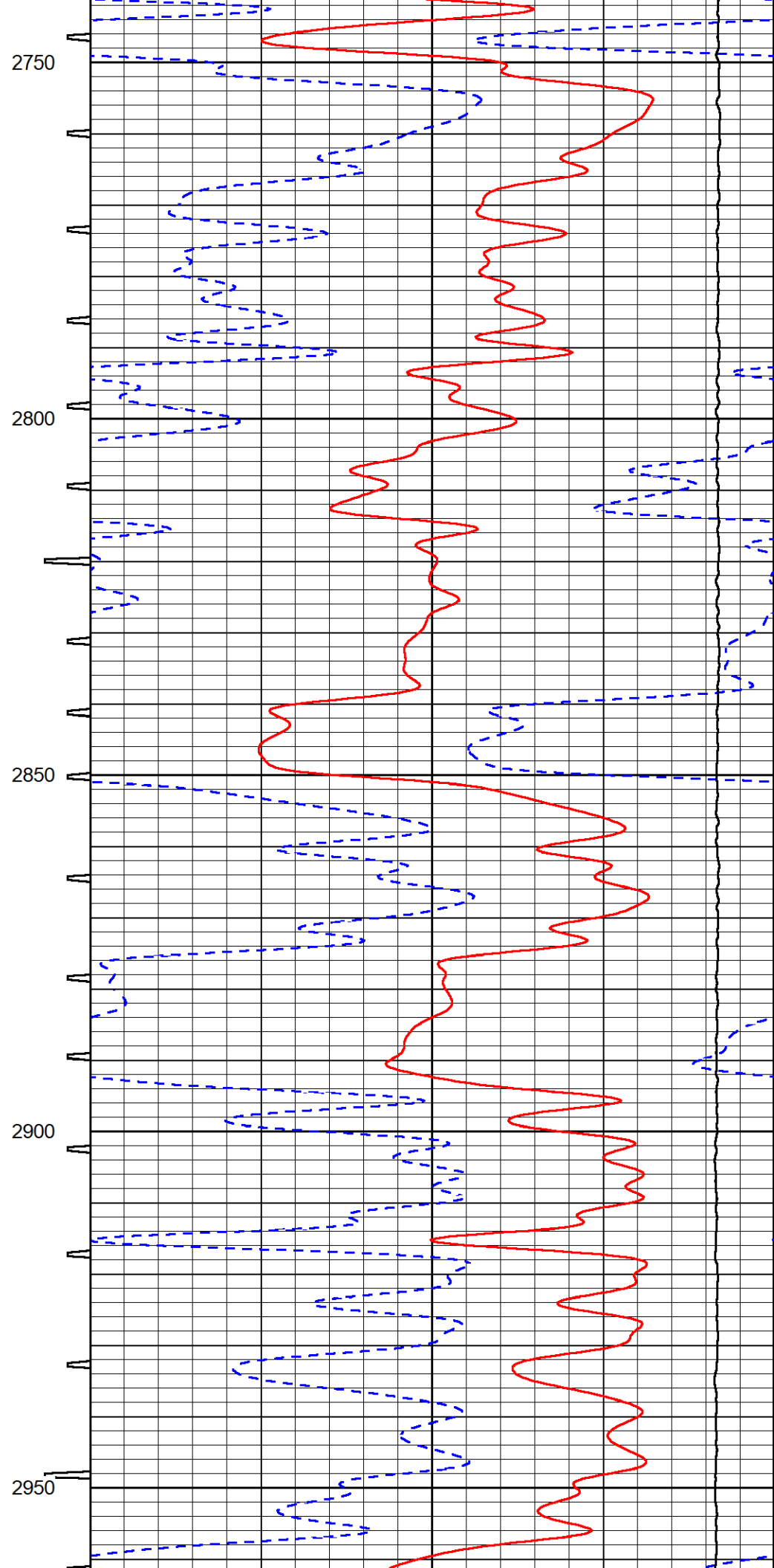
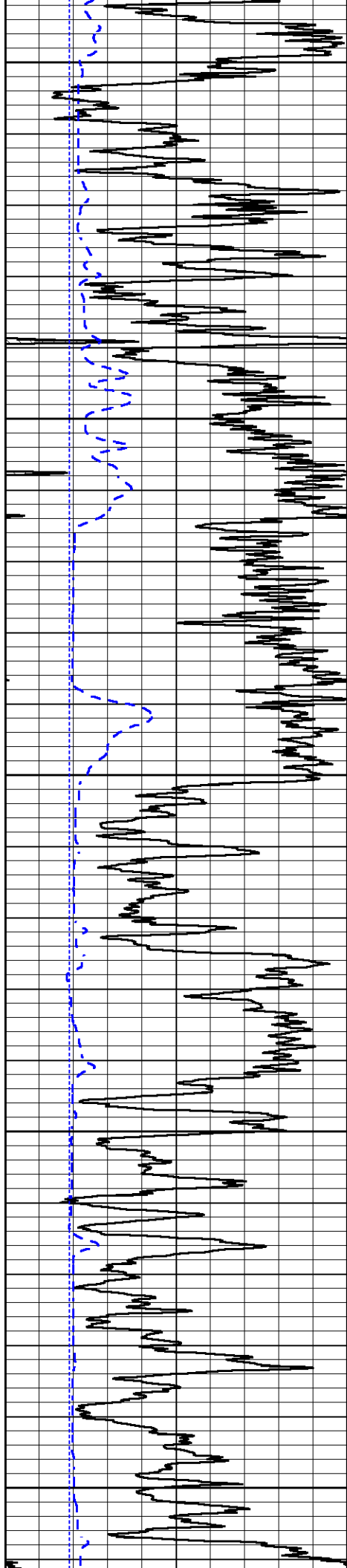


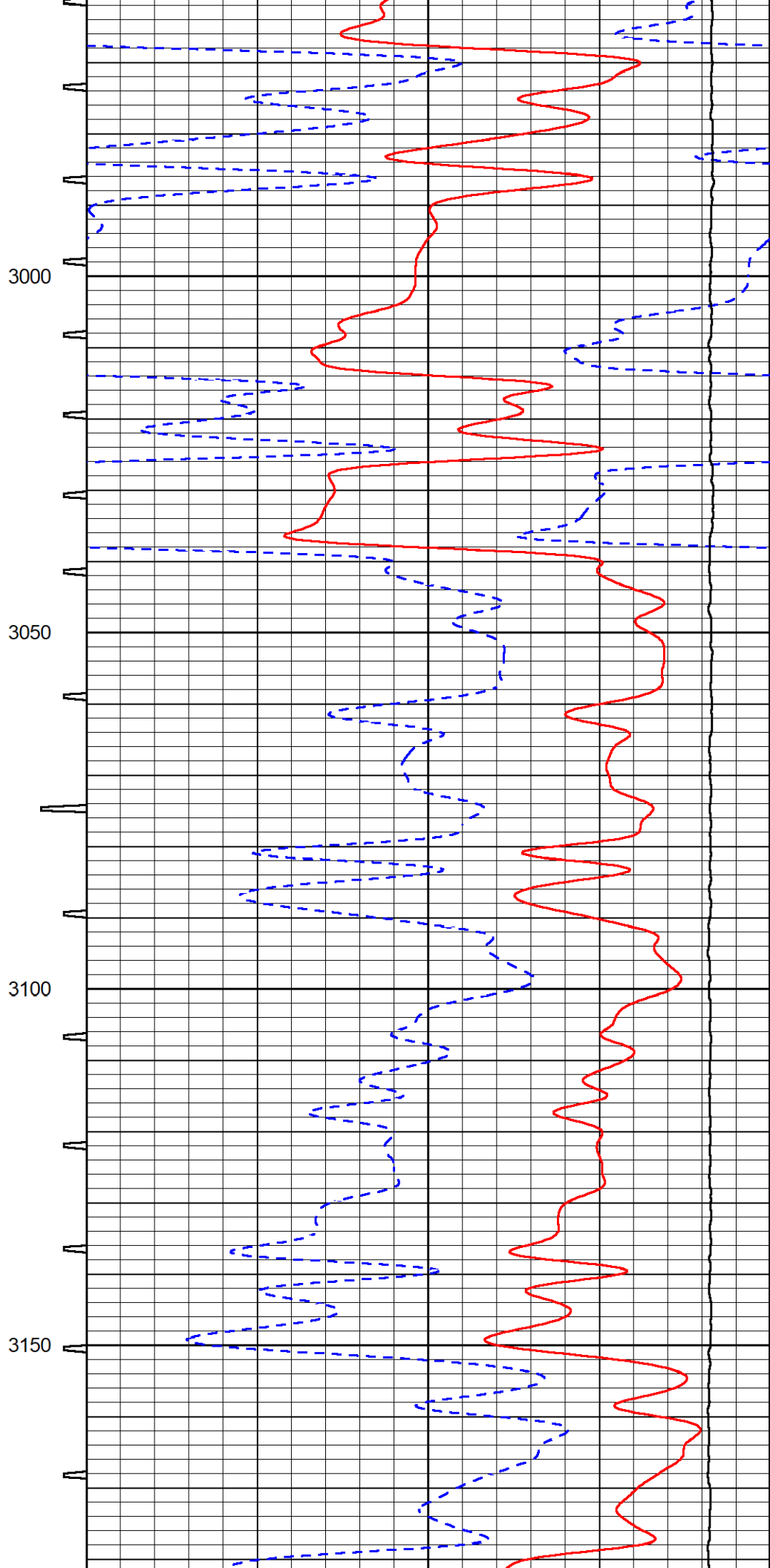
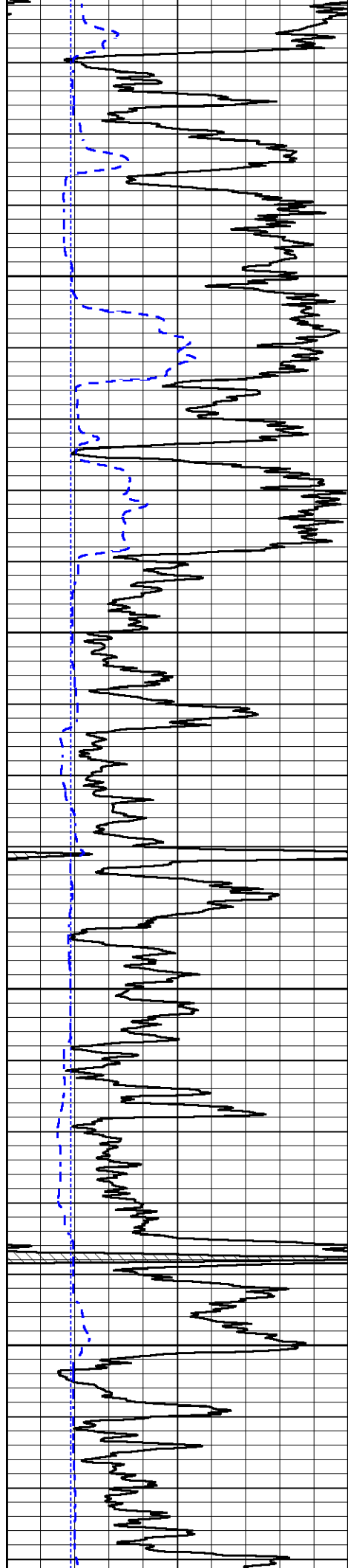
2550

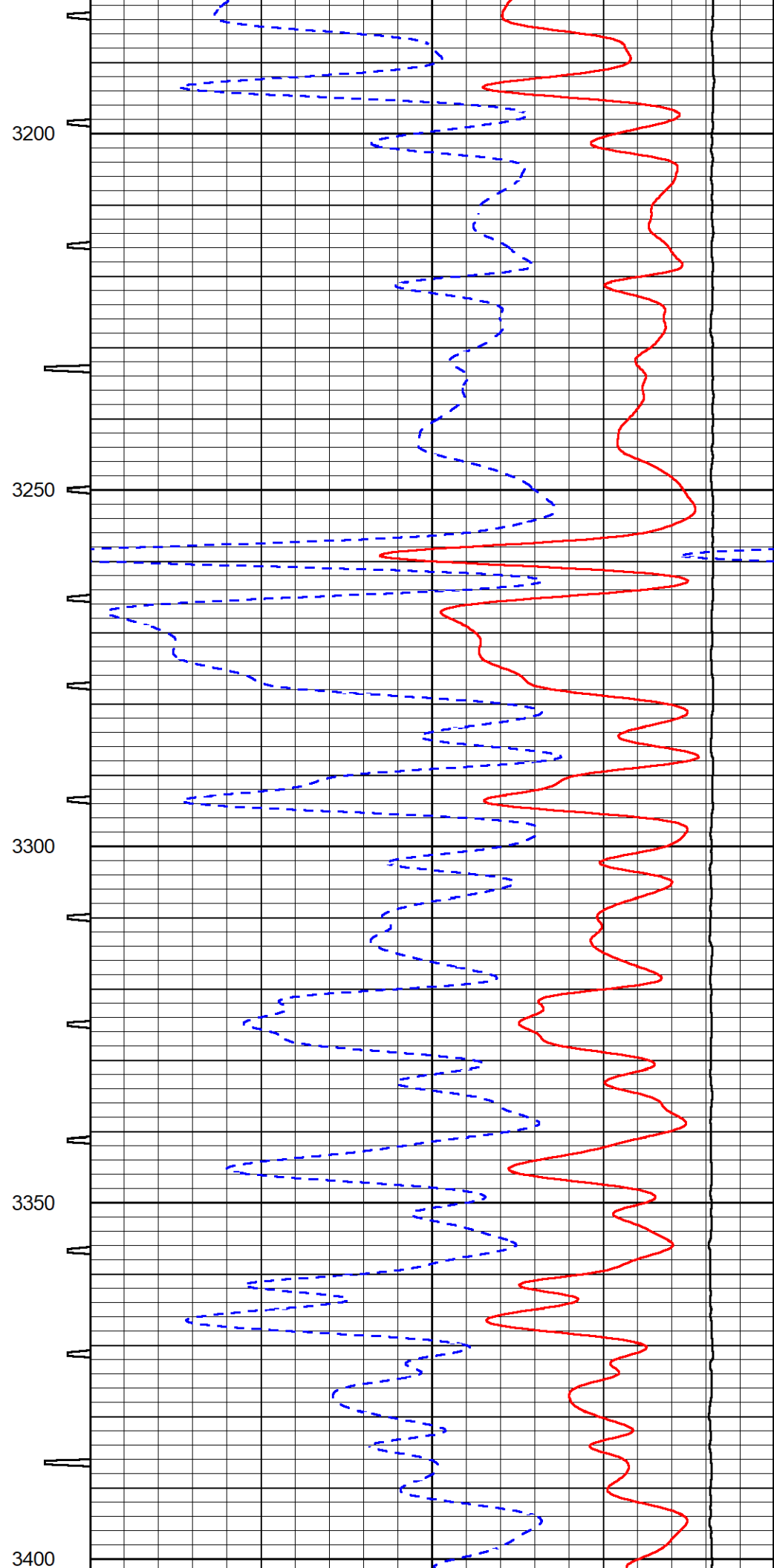
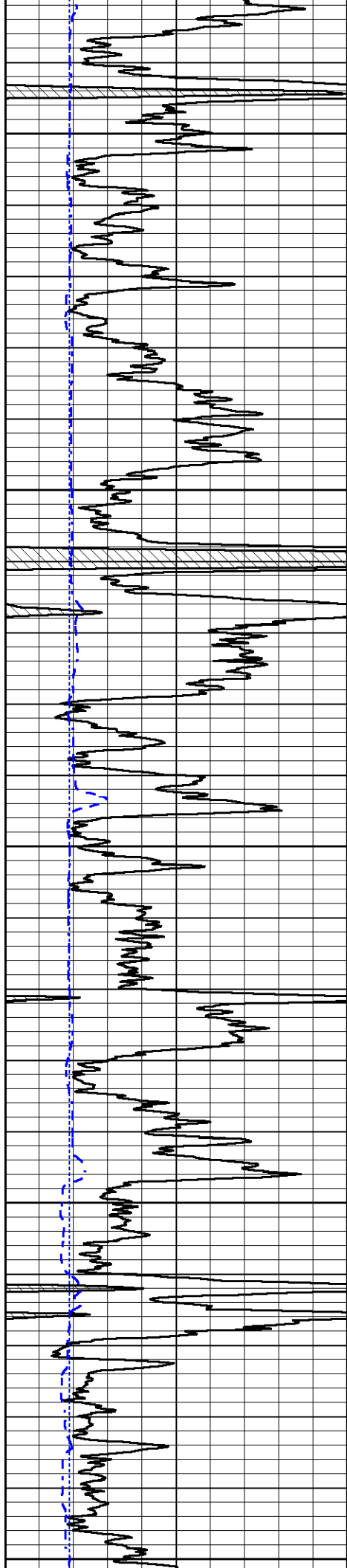
2600

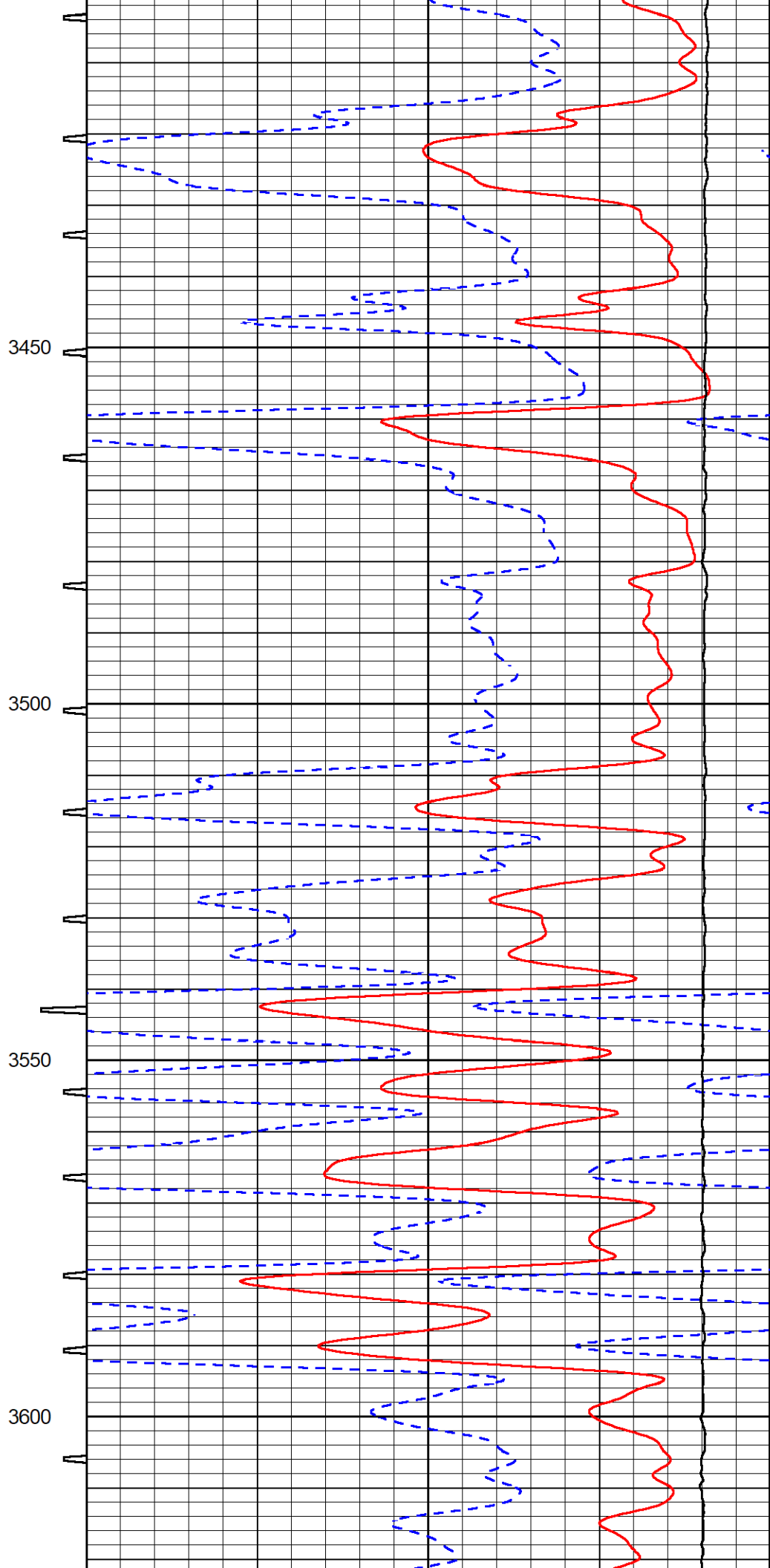
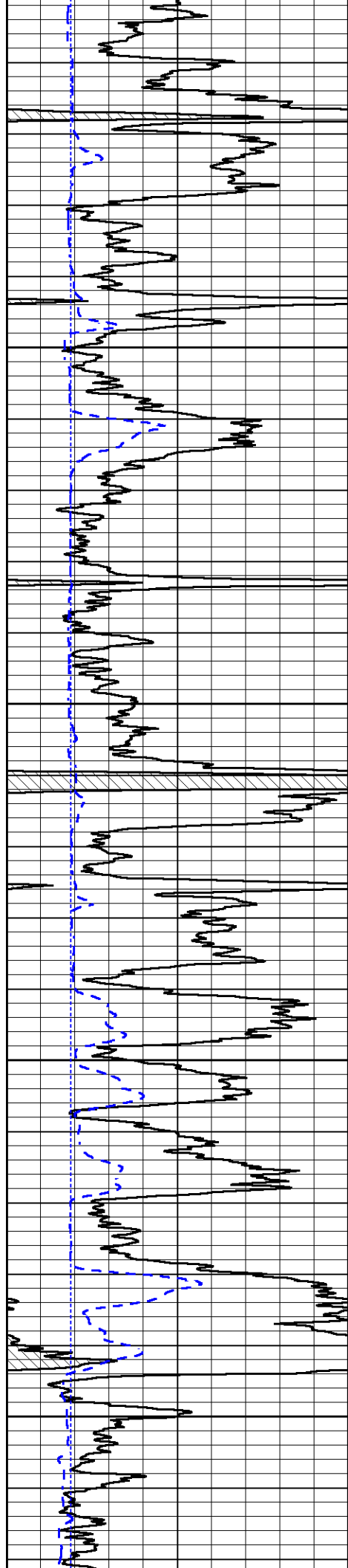
2650

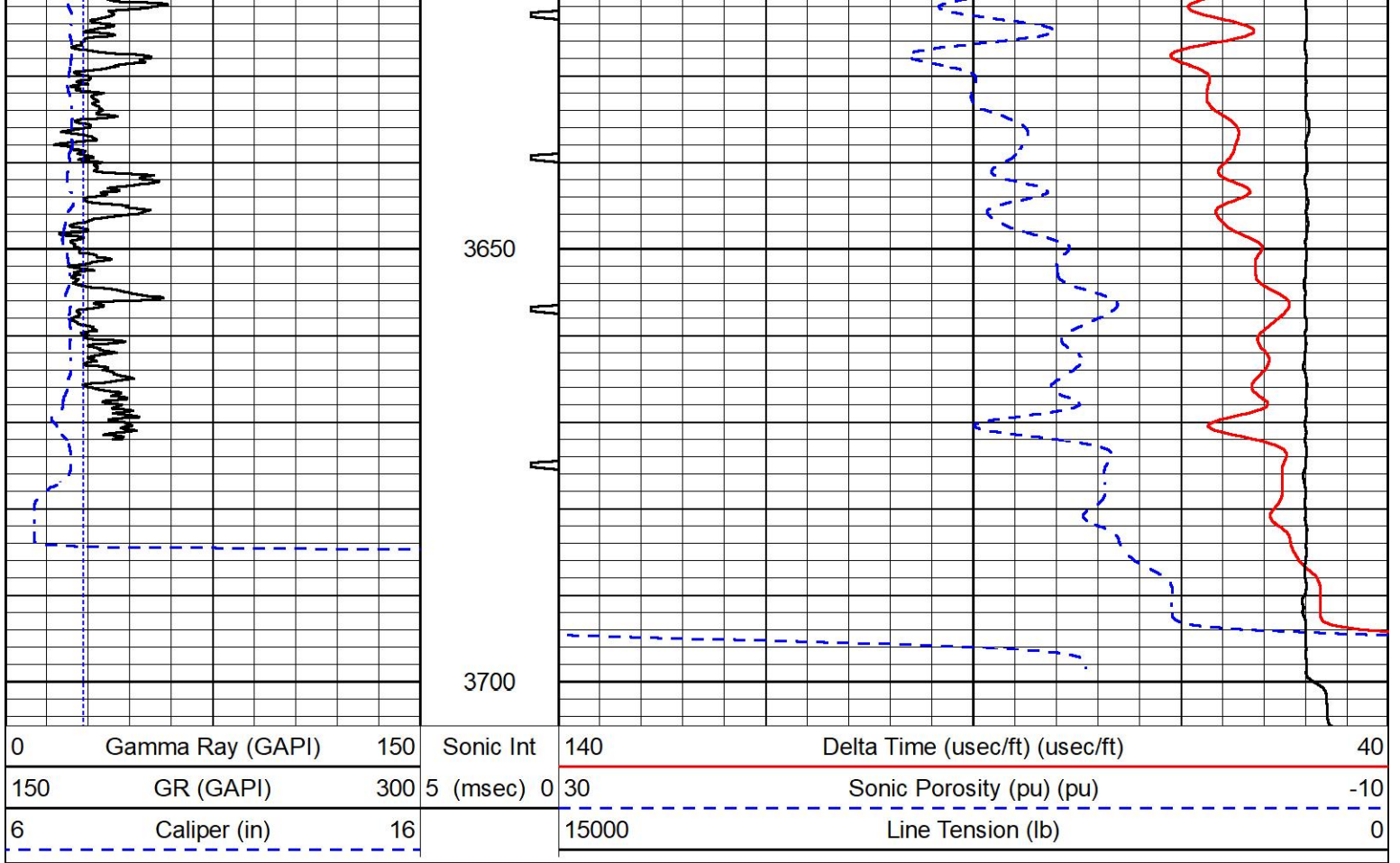
2700











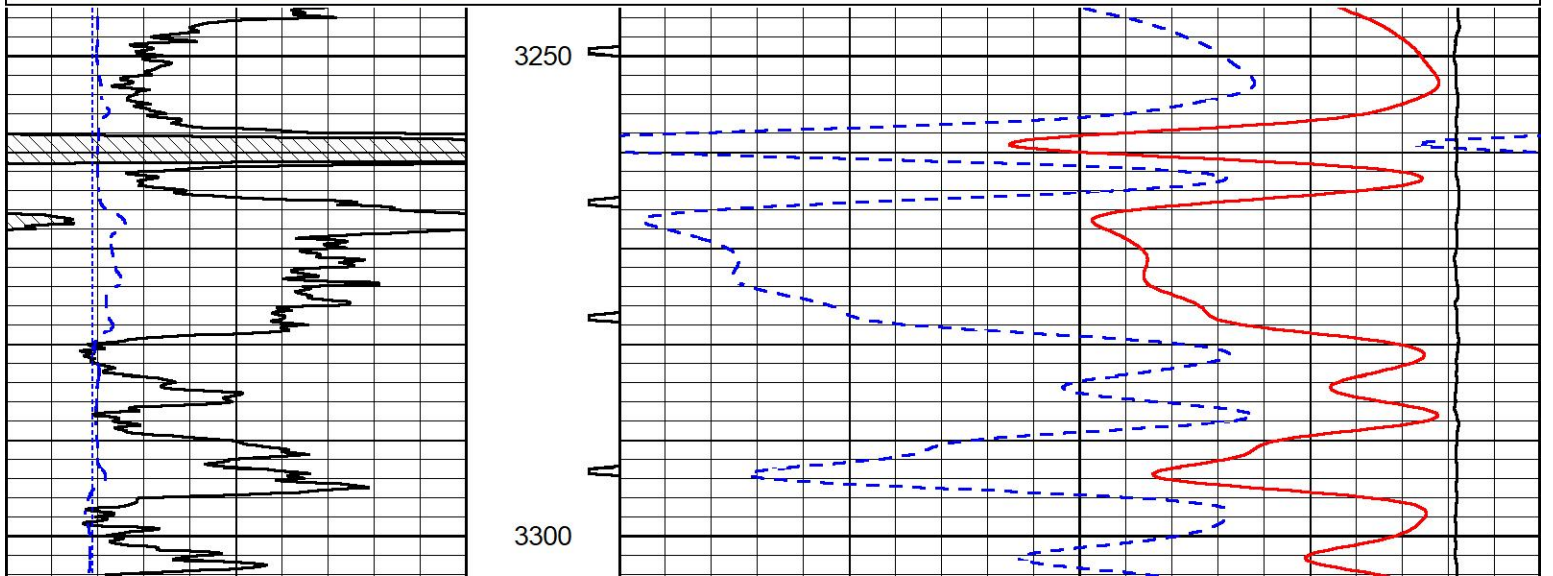
MIDWEST WIRELINE

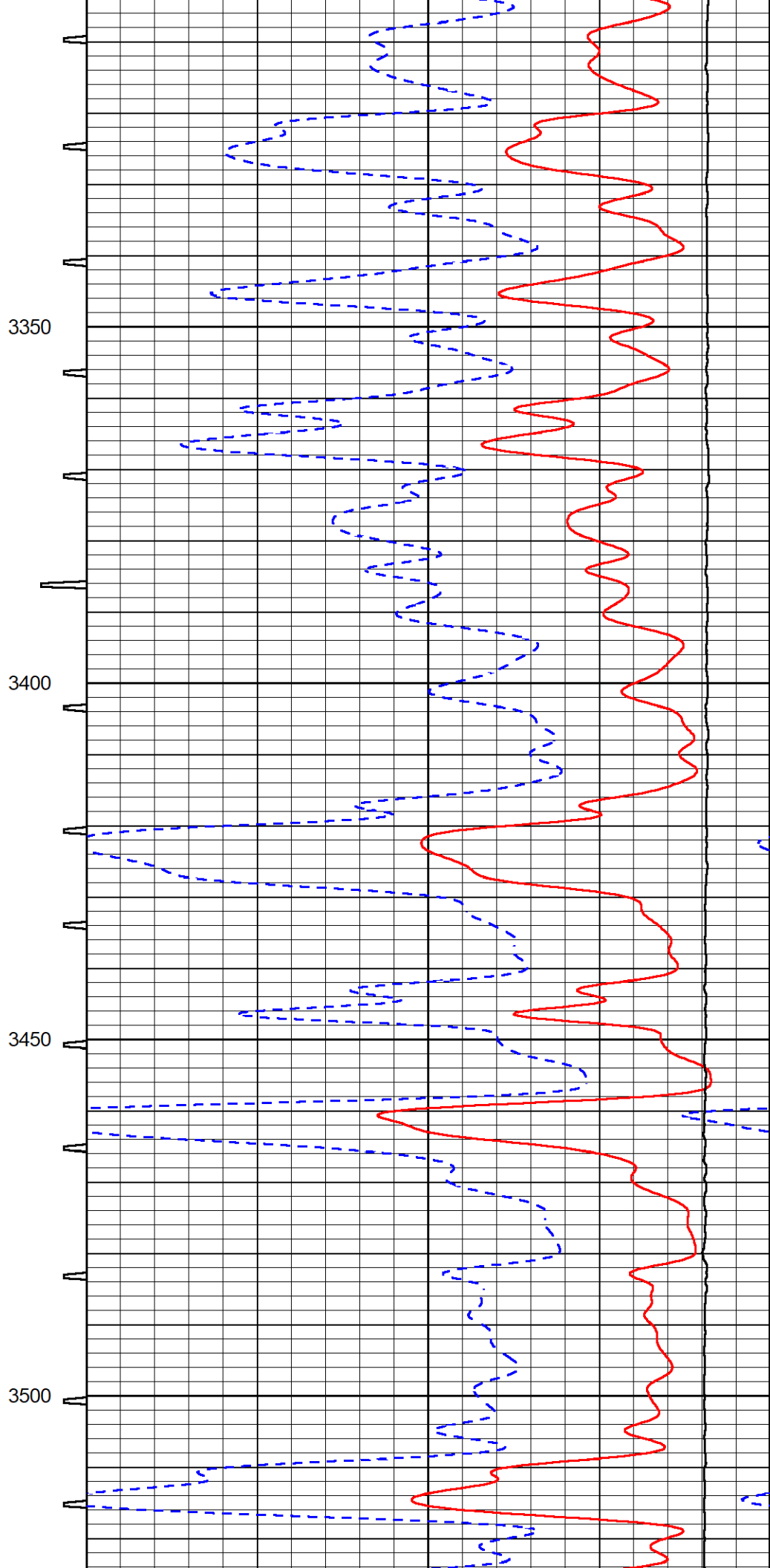
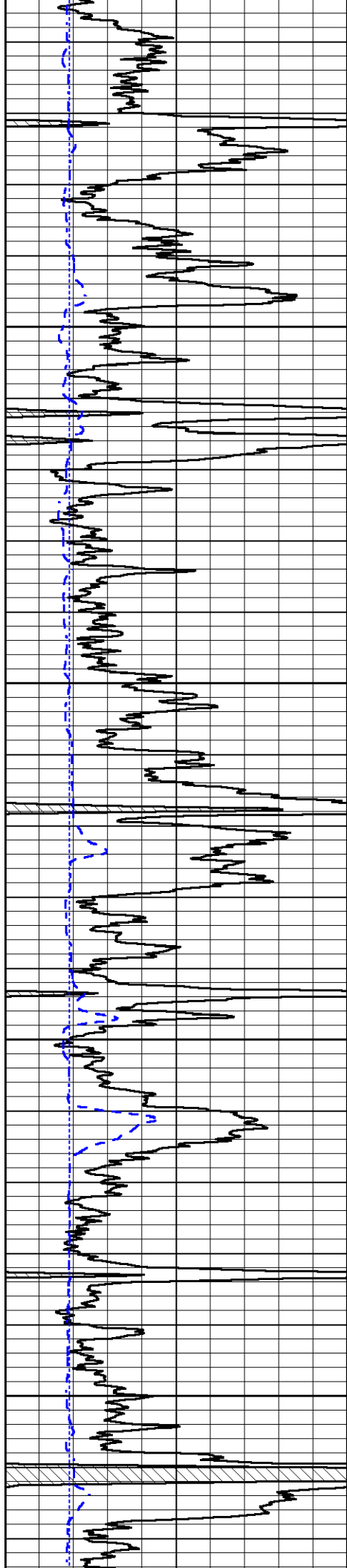
REPEAT SECTION

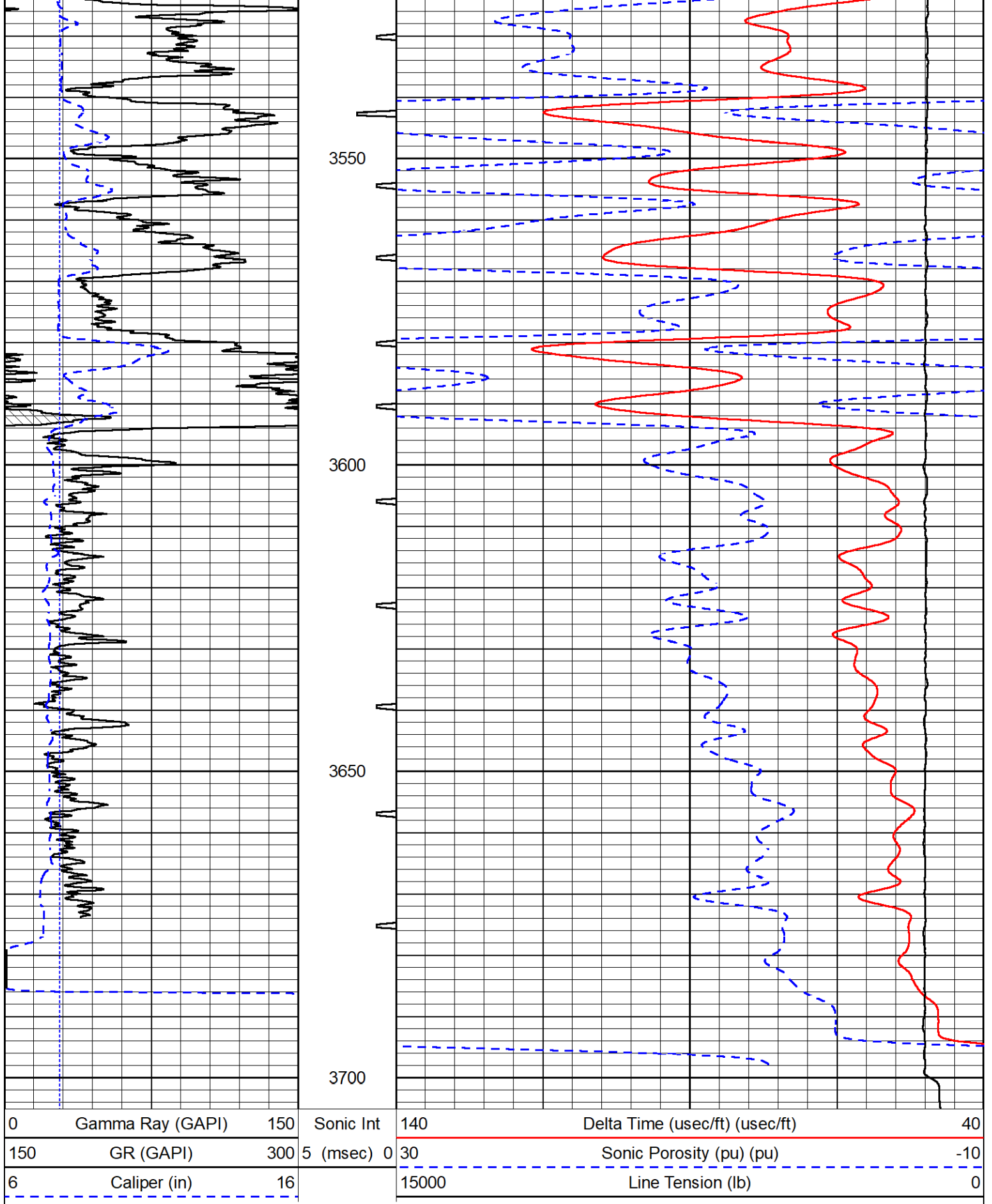
REPEAT PASS

Database File murfin_rusco-davis #7-36.db
 Dataset Pathname Stack/pass2.1
 Presentation Format _sonic
 Dataset Creation Sun Jan 30 23:20:44 2022
 Charted by Depth in Feet scaled 1:240

0	Gamma Ray (GAPI)	150	Sonic Int	140	Delta Time (usec/ft) (usec/ft)	40
150	GR (GAPI)	300	5 (msec) 0	30	Sonic Porosity (pu) (pu)	-10
6	Caliper (in)	16		15000	Line Tension (lb)	0







Company Murfin Drilling Company, Inc.
 Well Rusco-Davis #7-36
 Field Star West



County	Ellis
State	Kansas