



**COMPENSATED
DENSITY / NEUTRON
PE LOG**

Company MULL DRILLING COMPANY, INC.
Well SNYDER #4-11
Field UTICA NORTHEAST
County NESS
State KANSAS

Company MULL DRILLING COMPANY, INC.
Well SNYDER #4-11
Field UTICA NORTHEAST
County NESS State KANSAS

Location: API #: 15-135-26163-0000
381' FNL & 1342' FWL
SW - NW - NE - NW
Permanent Datum GROUND LEVEL Elevation 2619
Log Measured From KELLY BUSHING 7' A.G.L.
Drilling Measured From KELLY BUSHING
SEC 11 TWP 16S RGE 26W
Other Services
DILMEL
SONIC
Elevation
K.B. 2612
D.F. 2610
G.L. 2619

Date	5/1/22
Run Number	ONE
Depth Driller	4650
Depth Logger	4647
Bottom Logged Interval	4623
Top Log Interval	3700
Casing Driller	8 5/8"@223'
Casing Logger	223'
Bit Size	7 7/8"
Type Fluid in Hole	CHEMICAL MUD
Density / Viscosity	9.3/56
pH / Fluid Loss	10.0/6.0
Source of Sample	FLOWLINE
Rm @ Meas. Temp	1.60@72F
Rmf @ Meas. Temp	1.20@72F
Rmc @ Meas. Temp	1.92@72F
Source of Rmf / Rmc	MEASUREMENT
Rm @ BHT	.944@122F
Time Circulation Stopped	2.5 HOURS
Time Logger on Bottom	2:00 P.M.
Maximum Recorded Temperature	122F
Equipment Number	922339
Location	HAYS, KANSAS
Recorded By	JEFF LUEBBERS
Witnessed By	BLAKE MILLER
	COLE ROBBEN

<<< Fold Here >>>

All interpretations are opinions based on inferences from electrical or other measurements and we cannot and do not guarantee the accuracy or correctness of any interpretation, and we shall not, except in the case of gross or willful negligence on our part, be liable or responsible for any loss, costs, damages, or expenses incurred or sustained by anyone resulting from any interpretation made by any of our officers, agents or employees. These interpretations are also subject to our general terms and conditions set out in our current Price Schedule.

15-135-26163-0000 Comments

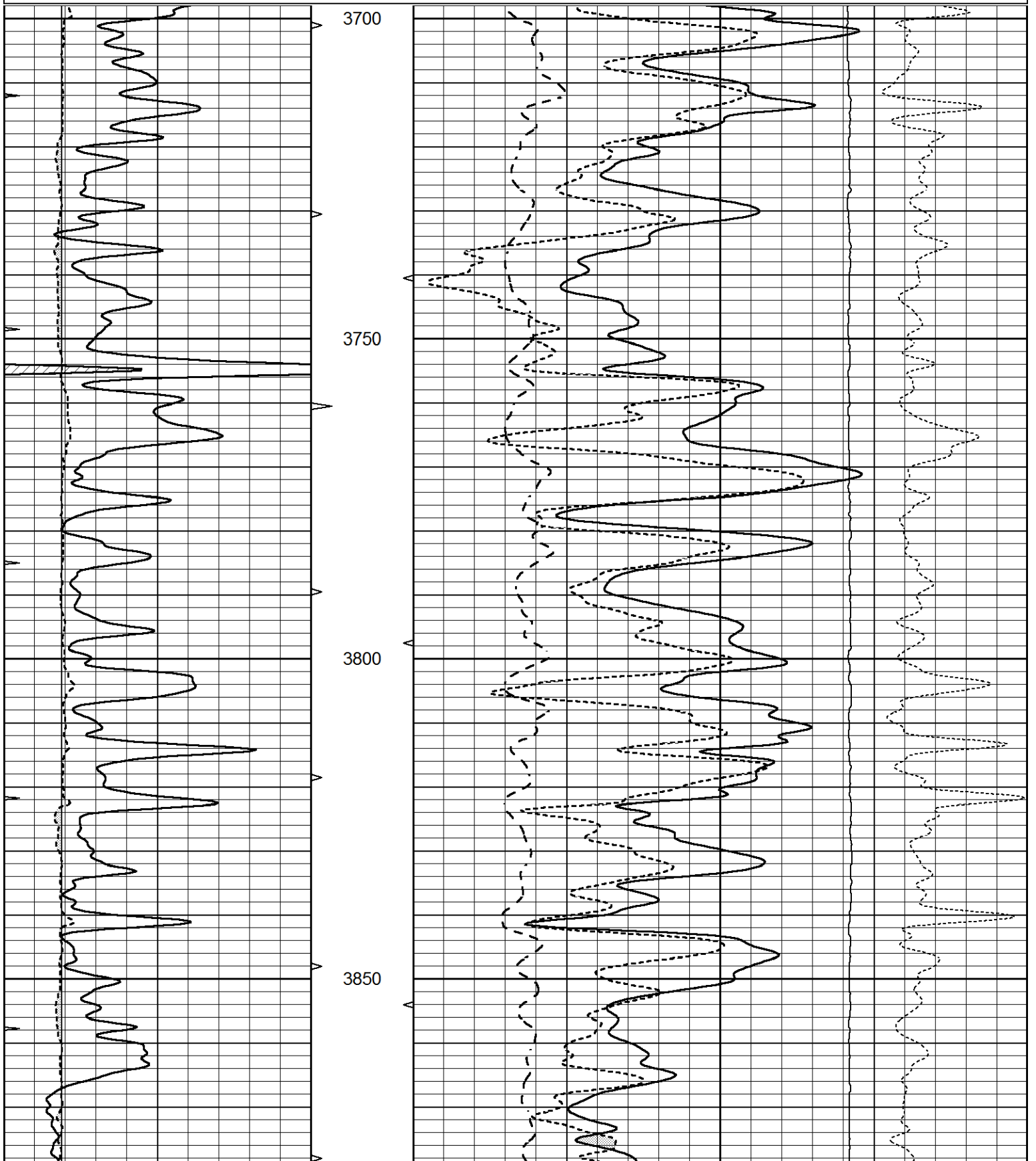
THANK YOU FOR USING ELI WIRELINE HAYS, KANSAS (785) 628-6395
DIRECTIONS
UTICA, KS AND HIGHWAY 4, 3 NORTH ON RD D TO 290 RD. 1/4 E AND SOUTH INTO

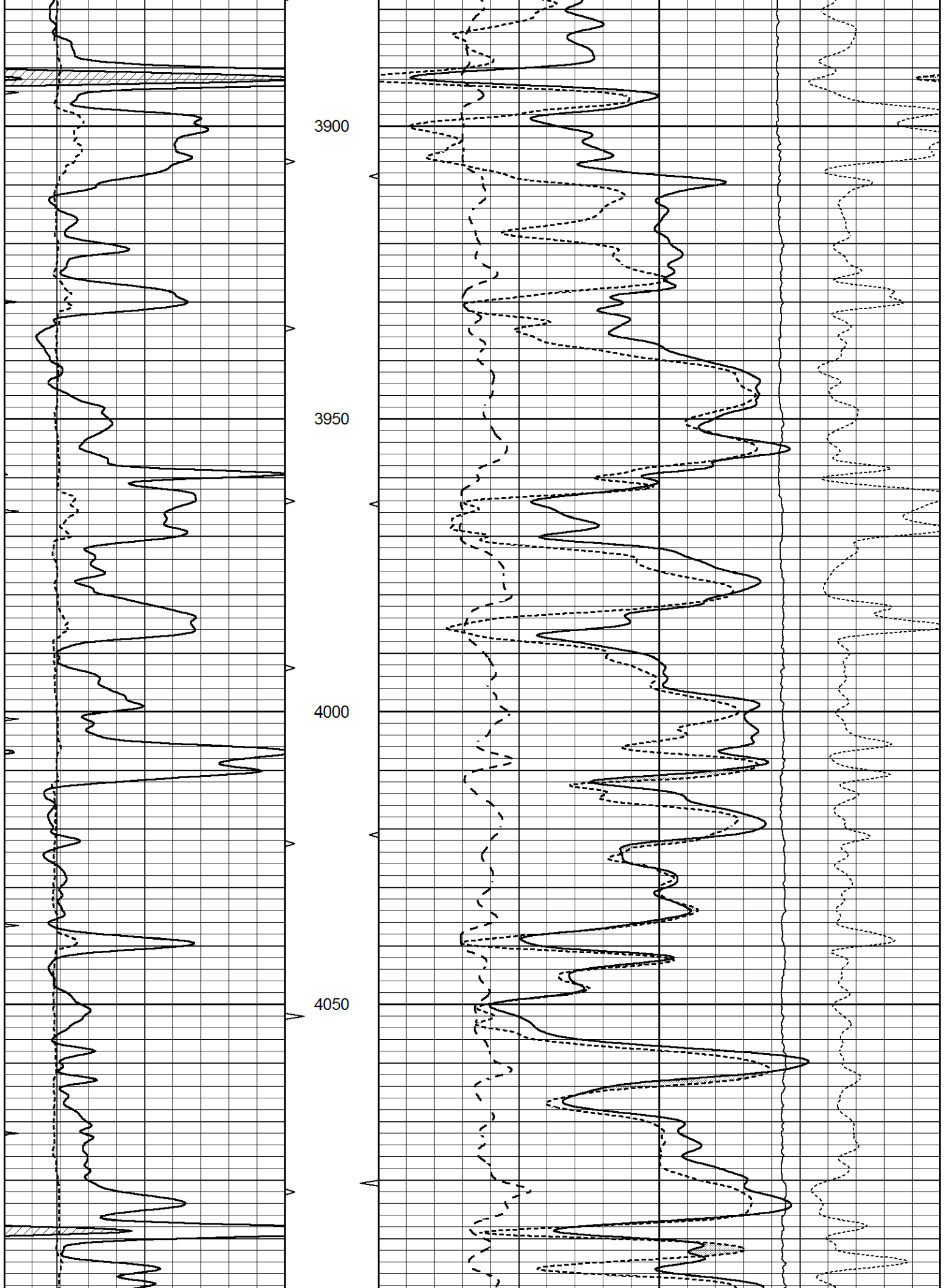


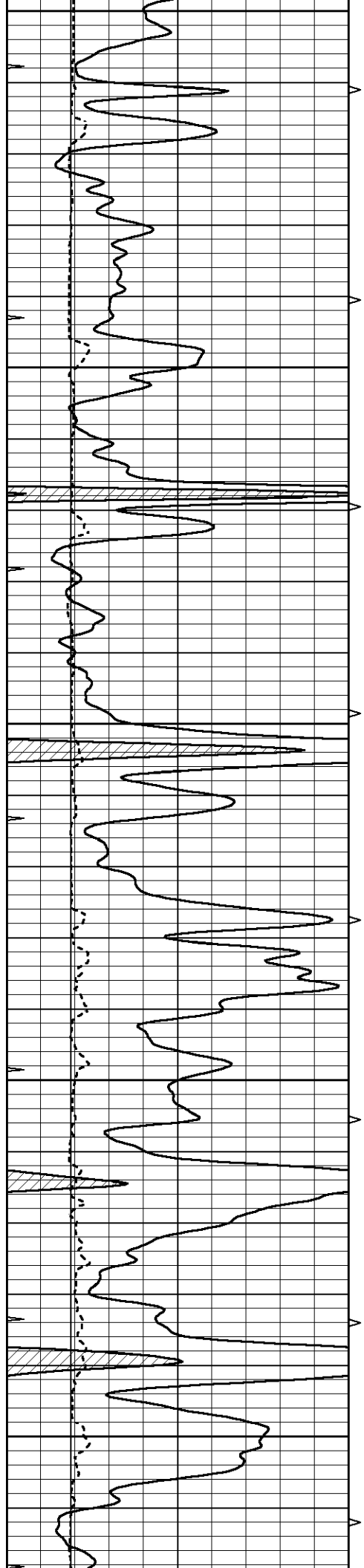
MAIN SECTION

Database File 6338pe.db
 Dataset Pathname pass3.1M
 Presentation Format ldt_neu
 Dataset Creation Sun May 01 15:32:48 2022
 Charted by Depth in Feet scaled 1:240

0	GAMMA RAY (GAPI)	150	ABHV	30	COMPENSATED DENSITY (pu)			-10	
6	CALIPER (in)	16	10 (ft3)	0	COMPENSATED NEUTRON (pu)			-10	
0	MINMK	20	TBHV	0	PE	10	-0.25	CORRECTION (g/cc)	0.25
			0 (ft3)	10			0	LTEN (lb)	5000







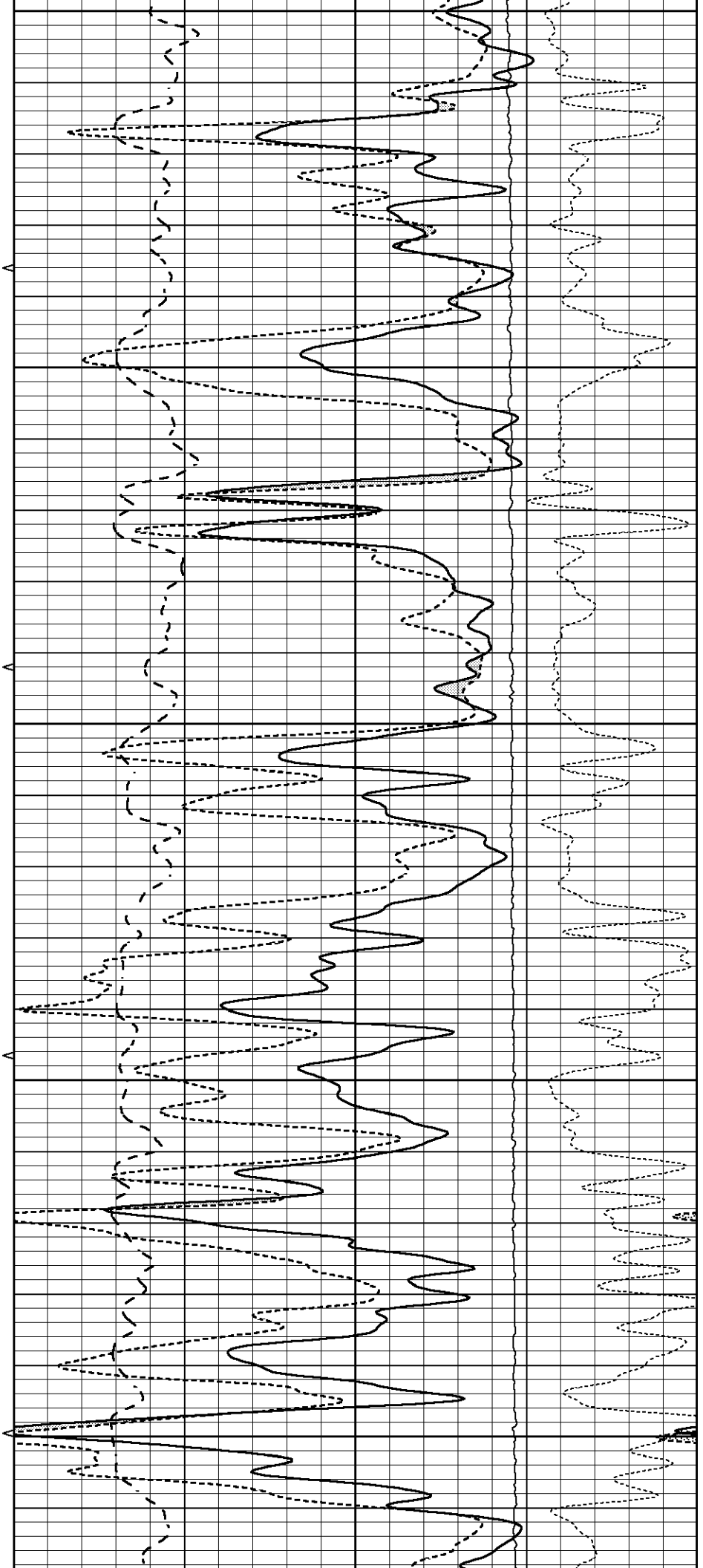
4100

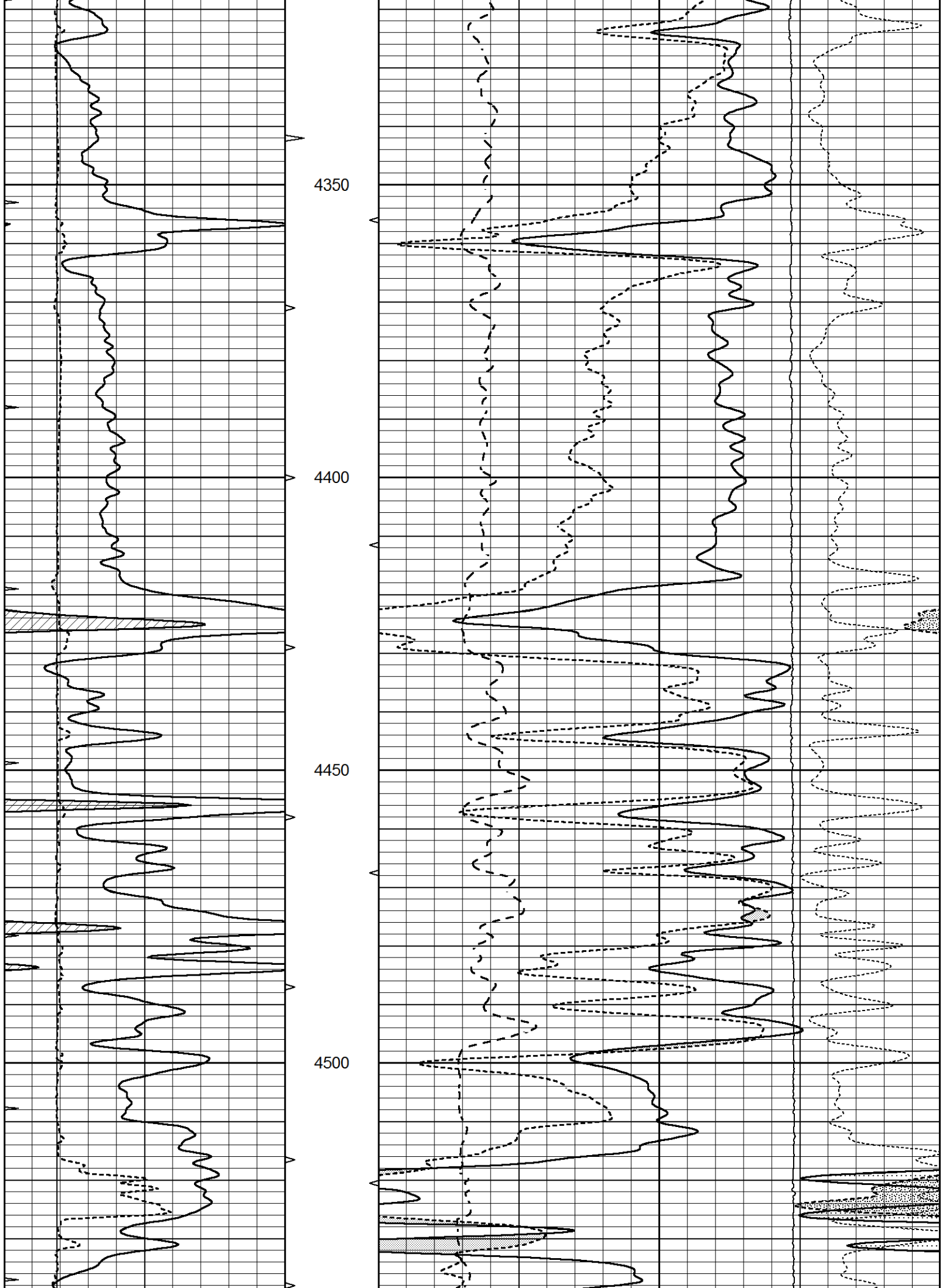
4150

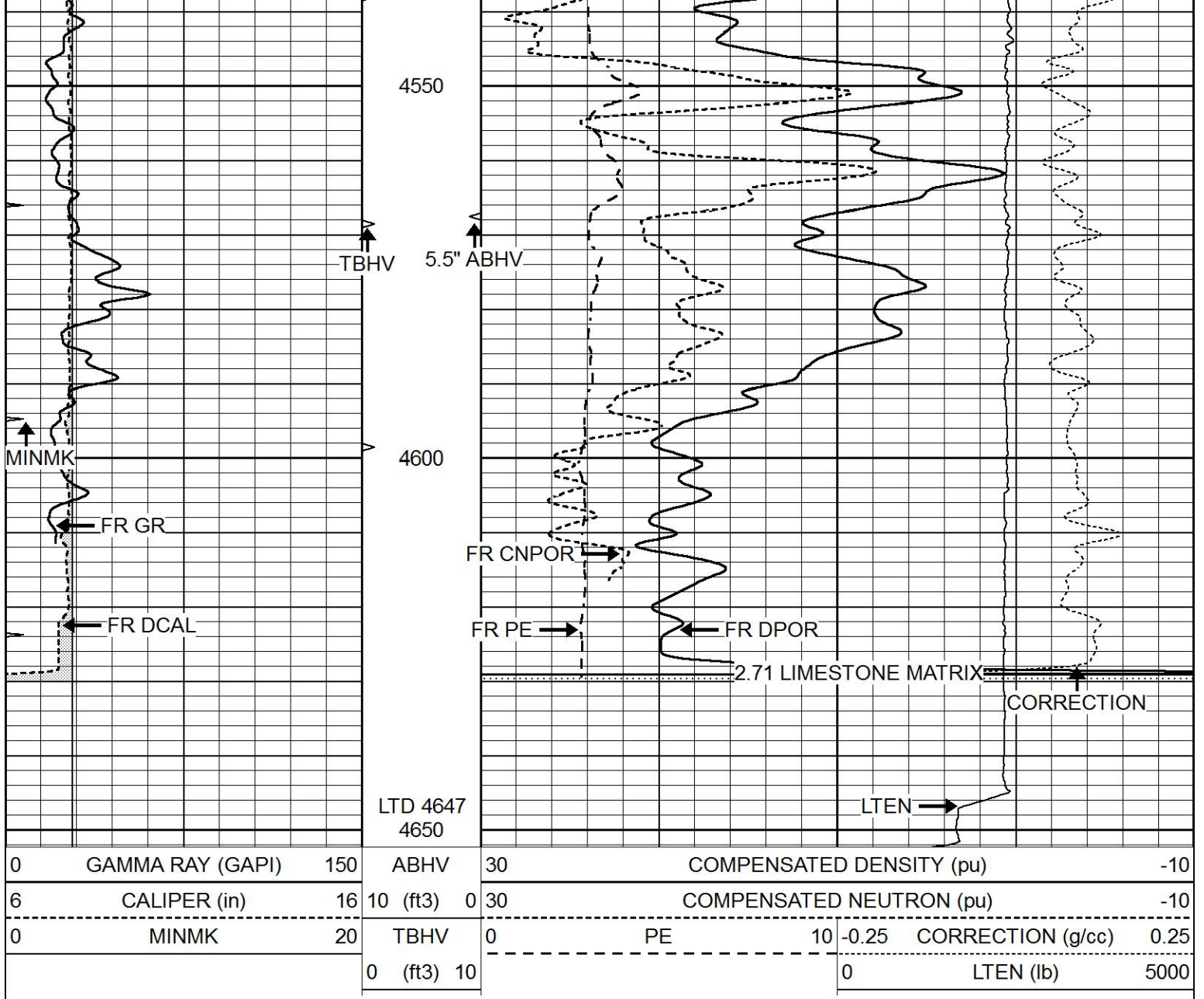
4200

4250

4300



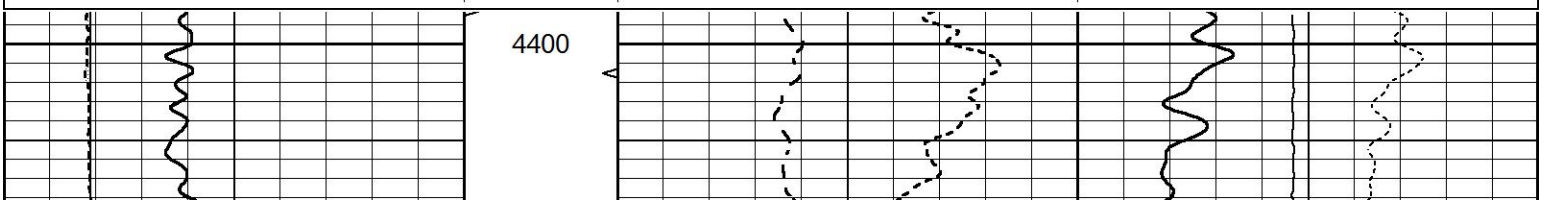


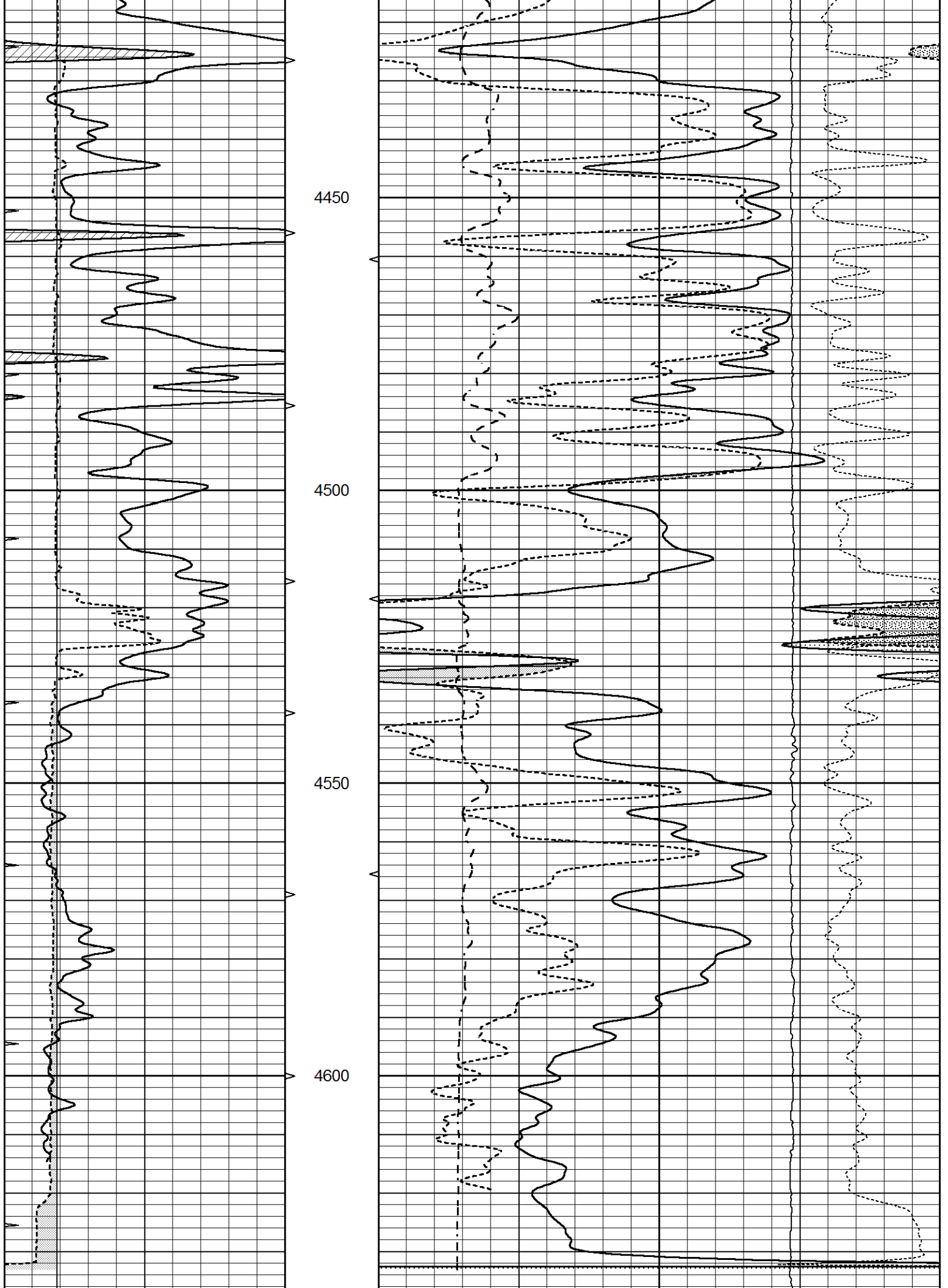


REPEAT SECTION

Database File 6338pe.db
 Dataset Pathname pass2.1R
 Presentation Format ldt_neu
 Dataset Creation Sun May 01 15:34:36 2022
 Charted by Depth in Feet scaled 1:240

0	GAMMA RAY (GAPI)	150	ABHV	30	COMPENSATED DENSITY (pu)	-10
6	CALIPER (in)	16	10 (ft3)	0 30	COMPENSATED NEUTRON (pu)	-10
0	MINMK	20	TBHV	0	PE	10 -0.25 CORRECTION (g/cc) 0.25
			0 (ft3)	10		0 LTEN (lb) 5000





Window 1	1593.8	10211.9	3449.0	3132.1	cps
Window 2	1486.7	8824.2	3065.6	2829.4	cps
Window 3	1206.8	4705.7	1944.6	1871.7	cps
Window 4	361.0	367.9	364.8	363.1	cps
Long Space	0.0	7337.5	1578.9	1342.7	cps
Short Space	2.7	2543.4	1657.9	1382.7	cps
Rho		1.7100	2.5900	0.0000	g/cc
Pe		2.0000	2.7500	5.7900	

Rib Angle	: 44.4	Rib Slope	: 0.980	Density/Spine Ratio	: 0.552
Spine Angle	: 74.4	Spine Slope	: 3.590	Spine Intercept	: -19.2

Before Survey Verification

Performed Wed Dec 31 18:00:00 1969

Window 1	0.0	0.0	0.0	0.0	cps
Window 2	0.0	0.0	0.0	0.0	cps
Window 3	0.0	0.0	0.0	0.0	cps
Window 4	0.0	0.0	0.0	0.0	cps
Long Space	0.0	0.0	0.0	0.0	cps
Short Space	0.0	0.0	0.0	0.0	cps
Measured Rho		0.0000	0.0000	0.0000	g/cc
Measured Correction		0.0000	0.0000	0.0000	g/cc
Measured Pe			0.0000	0.0000	

After Survey Verification

Performed Wed Dec 31 18:00:00 1969

Window 1	0.0	0.0	0.0	0.0	cps
Window 2	0.0	0.0	0.0	0.0	cps
Window 3	0.0	0.0	0.0	0.0	cps
Window 4	0.0	0.0	0.0	0.0	cps
Long Space	0.0	0.0	0.0	0.0	cps
Short Space	0.0	0.0	0.0	0.0	cps
Measured Rho		0.0000	0.0000	0.0000	g/cc
Measured Correction		0.0000	0.0000	0.0000	g/cc
Measured Pe			0.0000	0.0000	

Compensated Neutron Calibration Report

Serial Number: 070808PMC
Tool Model: NABORS

PRE-SURVEY VERIFICATION

Detector	Readings	Measured	Target
Short Space	cps		
Long Space	cps	pu	pu

POST-SURVEY VERIFICATION

Detector	Readings	Measured	Target
Short Space	cps		
Long Space	cps	pu	pu

Gamma Ray Calibration Report

Serial Number: 070558
Tool Model: OPEN_GR
Performed: Sat Apr 23 03:38:55 2022

Calibrator Value:	1.0	GAPI
Background Reading:	0.0	cps
Calibrator Reading:	1.0	cps
Sensitivity:	0.2800	GAPI/cps