

SONIC
LOG



Company MULL DRILLING COMPANY, INC.
Well SNYDER #4-11
Field UTICA NORTHEAST
County NESS State KANSAS

Location: API #: 15-135-26163-0000
381' FNL & 1342' FWL
SW - NW - NE - NW
Permanent Datum GROUND LEVEL Elevation 2619
Log Measured From KELLY BUSHING 7' A.G.L.
Drilling Measured From KELLY BUSHING
Other Services
CDL/CNL/DIL
MEL/PE
Elevation
K.B. 2612
D.F. 2610
G.L. 2619

Date	5/1/22
Run Number	TWO
Depth Driller	4650
Depth Logger	4647
Bottom Logged Interval	4639
Top Log Interval	200
Casing Driller	8 5/8"@223'
Casing Logger	223'
Bit Size	7 7/8"
Type Fluid in Hole	CHEMICAL MUD
Density / Viscosity	9.3/56
PH / Fluid Loss	10.0/6.0
Source of Sample	FLOWLINE
Rm @ Meas. Temp	1.60@72F
Rmf @ Meas. Temp	1.20@72F
Rmc @ Meas. Temp	1.92@72F
Source of Rmf / Rmc	MEASUREMENT
Rm @ BHT	.944@122F
Time Circulation Stopped	4.5 HOURS
Time Logger on Bottom	4:00 P.M.
Maximum Recorded Temperature	122F
Equipment Number	922339
Location	HAYS, KANSAS
Recorded By	JEFF LUEBBERS
Witnessed By	BLAKE MILLER
	COLE ROBBEN

<<< Fold Here >>>

All interpretations are opinions based on inferences from electrical or other measurements and we cannot and do not guarantee the accuracy or correctness of any interpretation, and we shall not, except in the case of gross or willful negligence on our part, be liable or responsible for any loss, costs, damages, or expenses incurred or sustained by anyone resulting from any interpretation made by any of our officers, agents or employees. These interpretations are also subject to our general terms and conditions set out in our current Price Schedule.

15-135-26163-0000 Comments

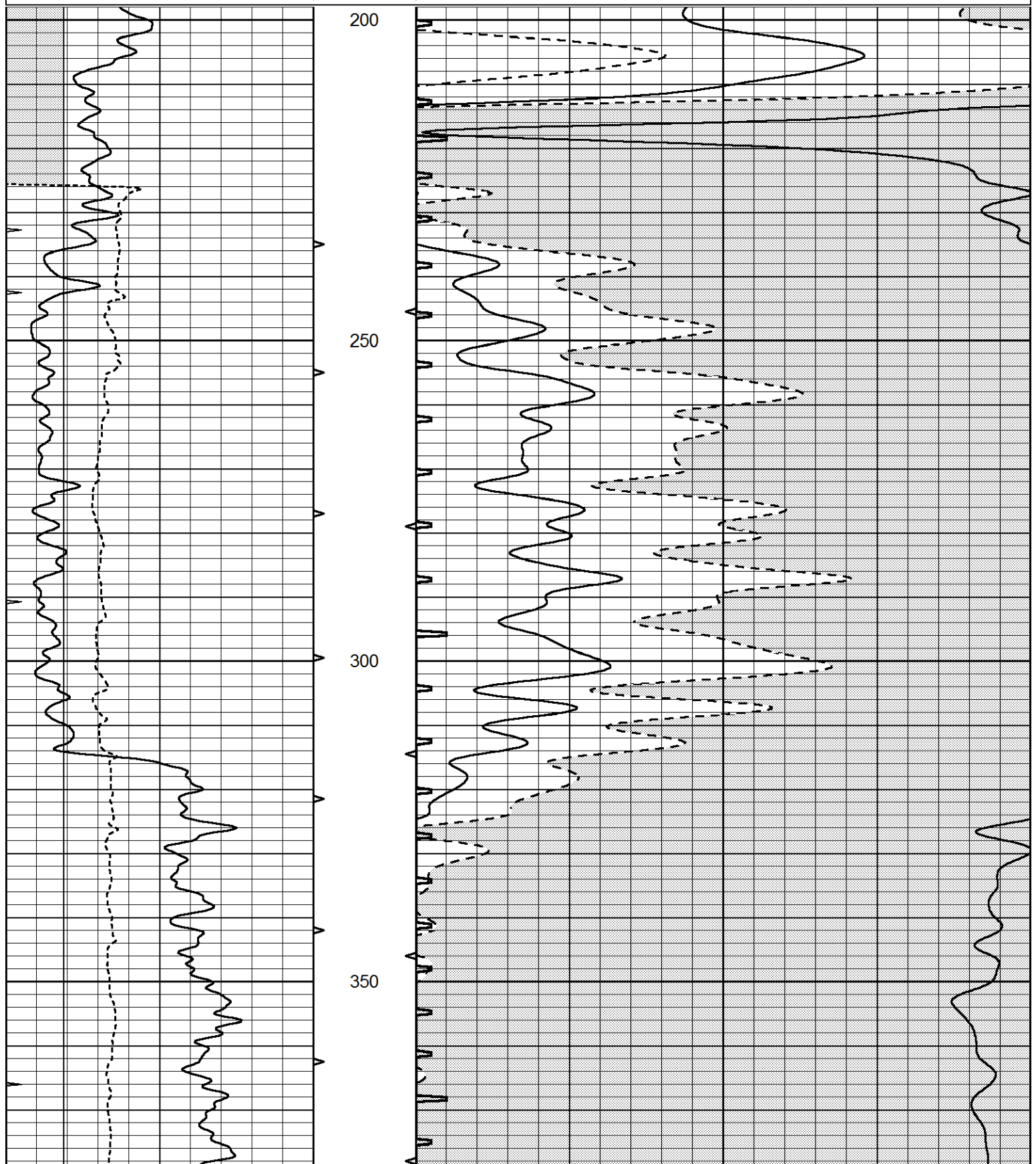
THANK YOU FOR USING ELI WIRELINE HAYS, KANSAS (785) 628-6395
DIRECTIONS
UTICA, KS AND HIGHWAY 4, 3 NORTH ON RD D TO 290 RD. 1/4 E AND SOUTH INTO

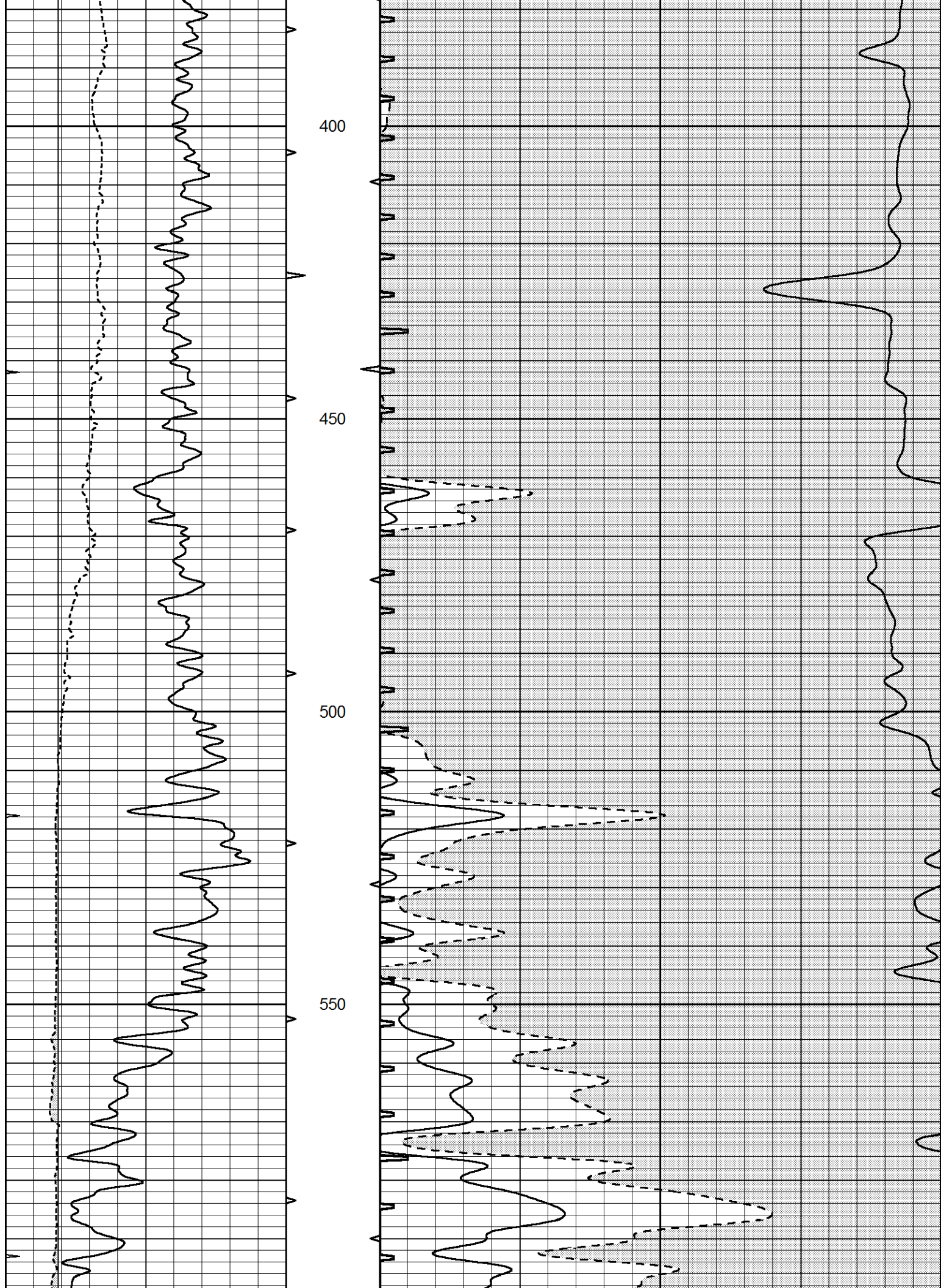


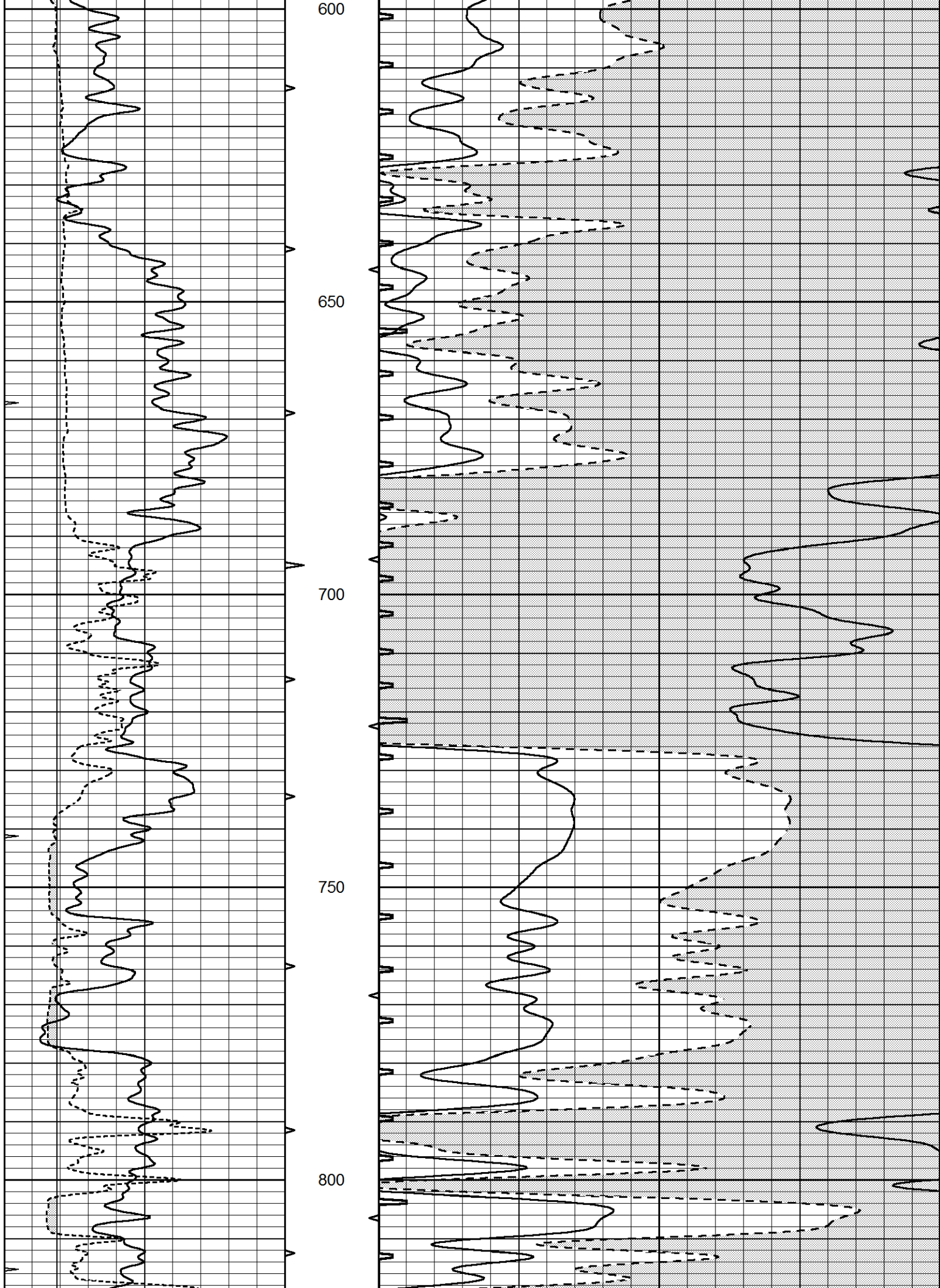
MAIN SECTION

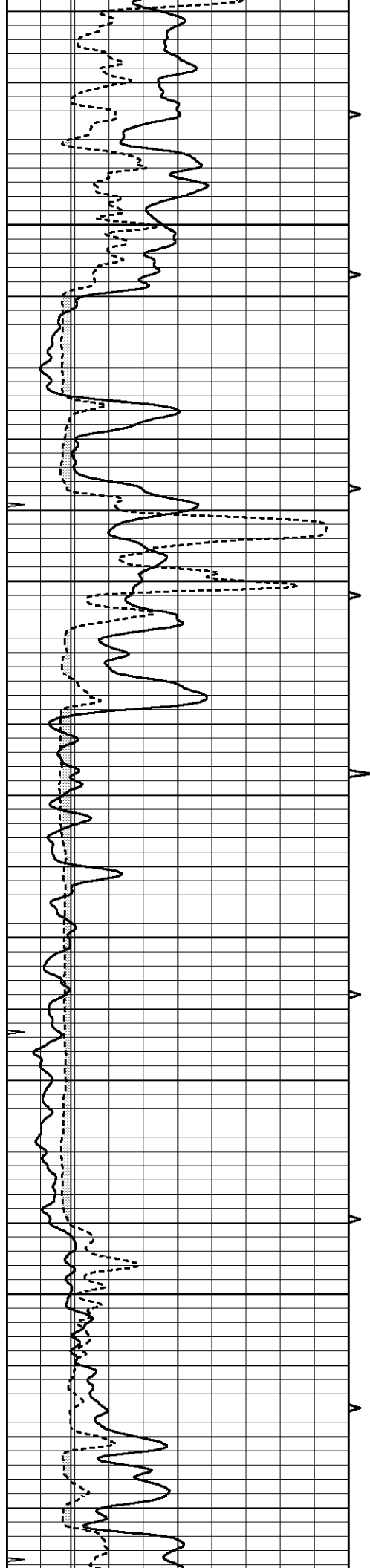
Database File 6338pe.db
 Dataset Pathname pass6.2M
 Presentation Format slt
 Dataset Creation Sun May 01 17:59:30 2022
 Charted by Depth in Feet scaled 1:240

0	GAMMA RAY (GAPI)	150	ABHV	140	DELTA TIME (usec/ft)	40
6	CALIPER (in)	16	10 (ft3)	0	SONIC POROSITY (pu)	-10
6	CALIPER (in)	16	TBHV	0	ITT (msec)	20
0	MINMK	20	0 (ft3)	10		







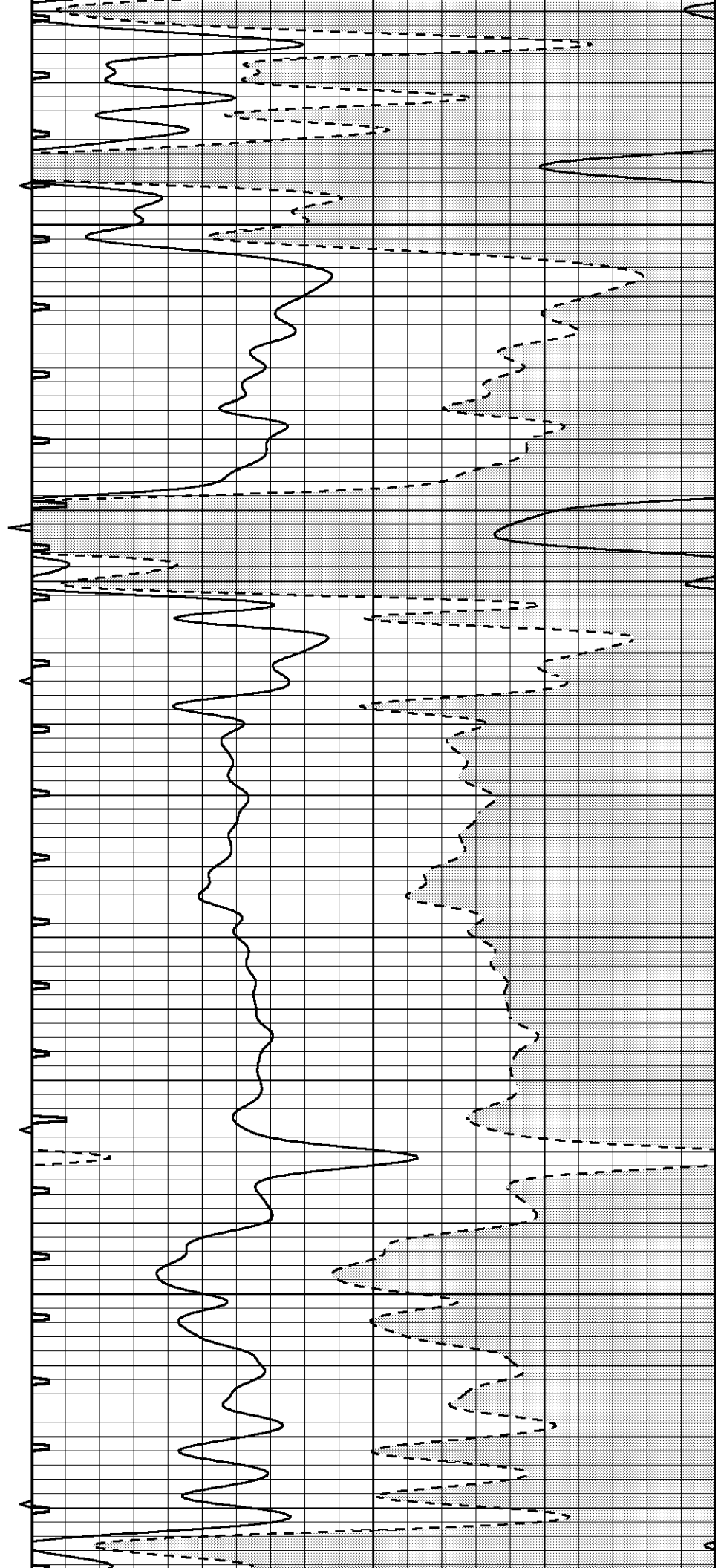


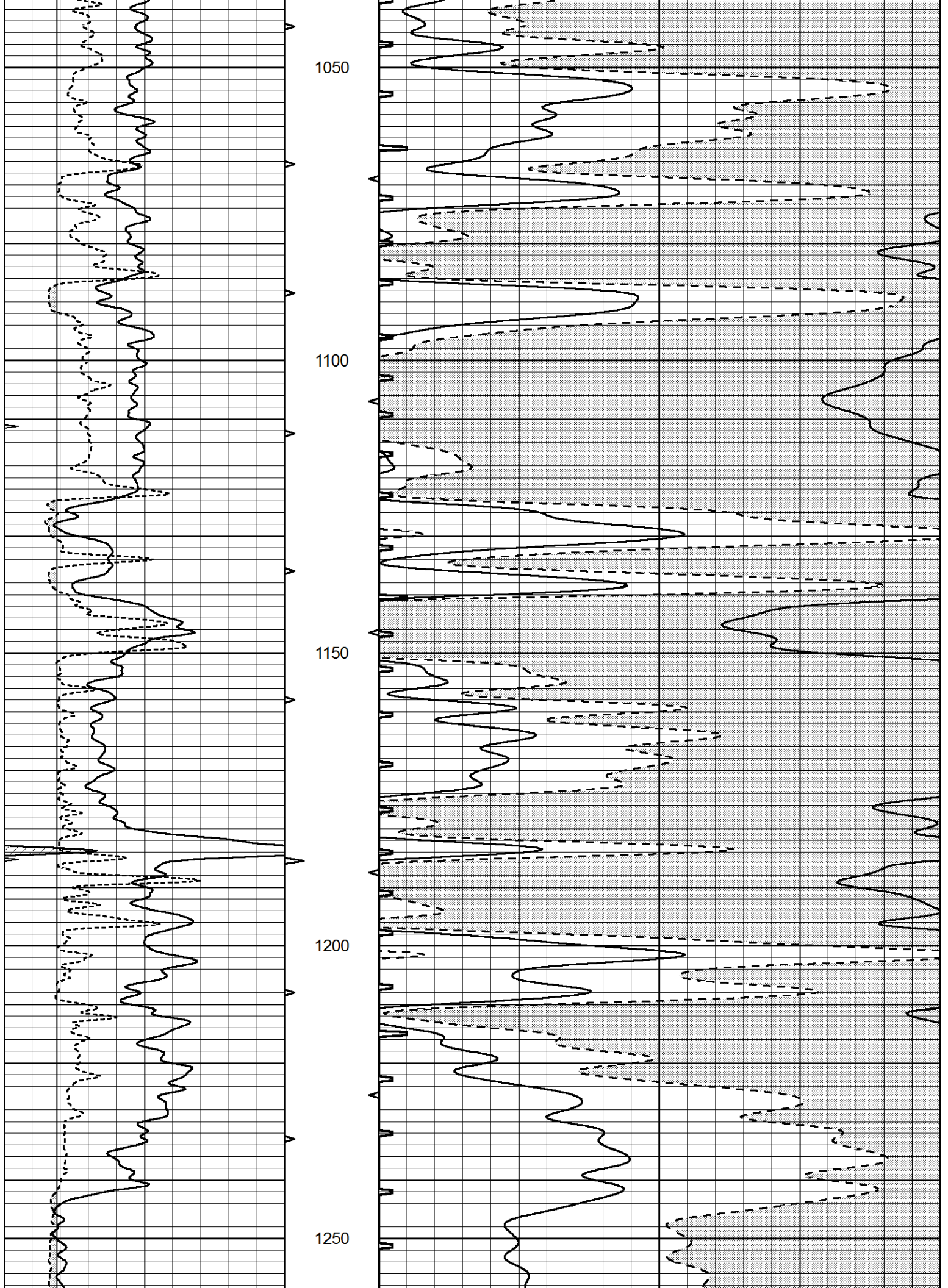
850

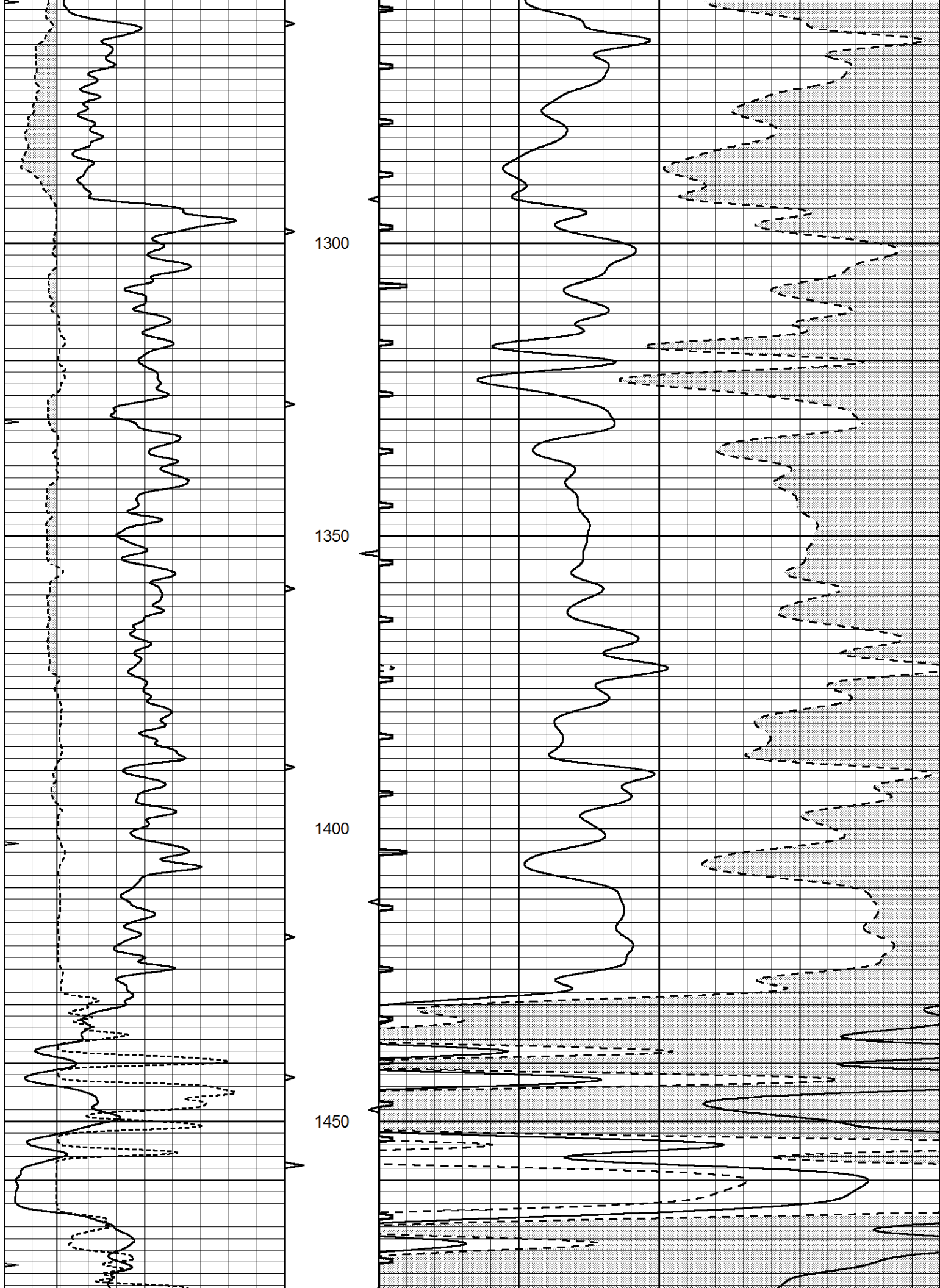
900

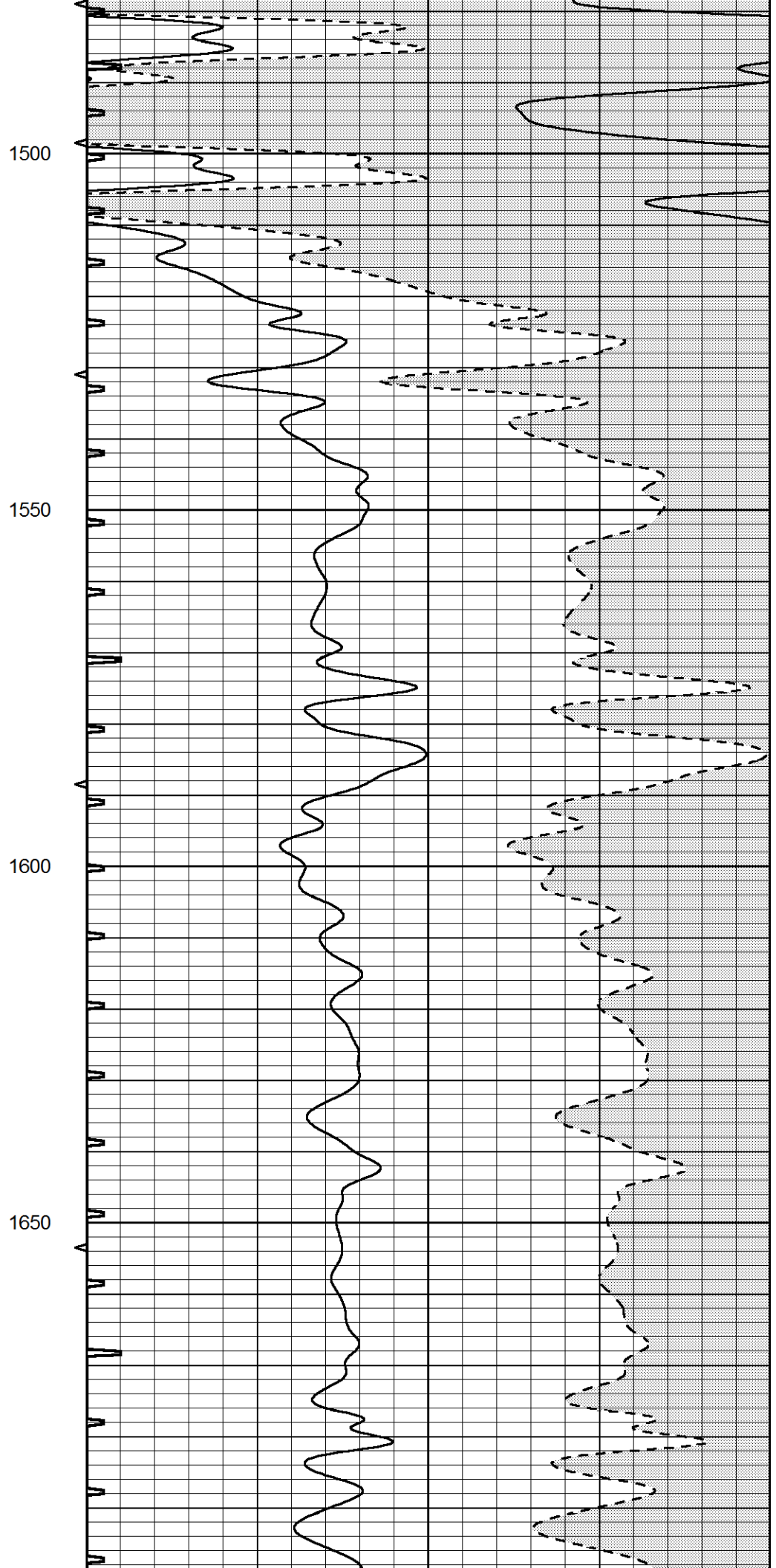
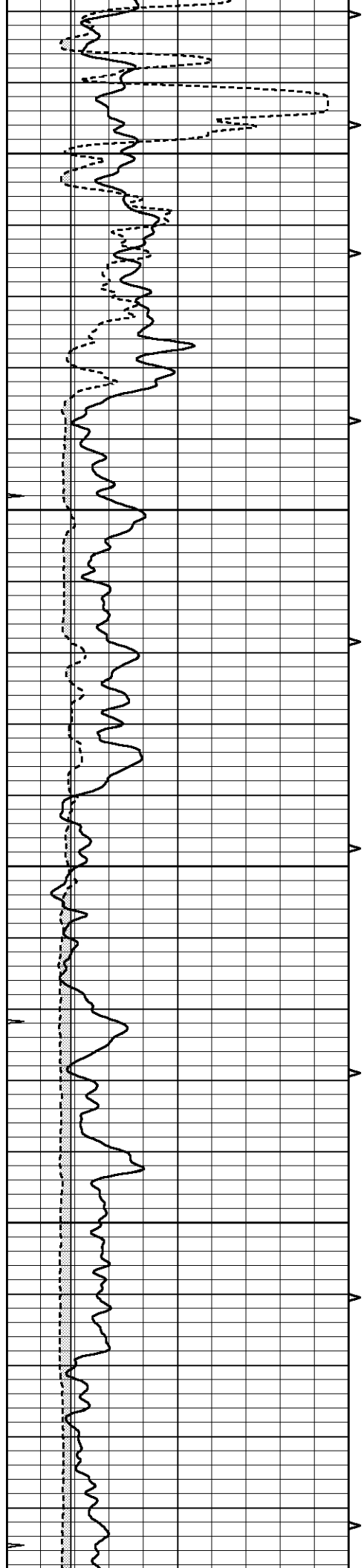
950

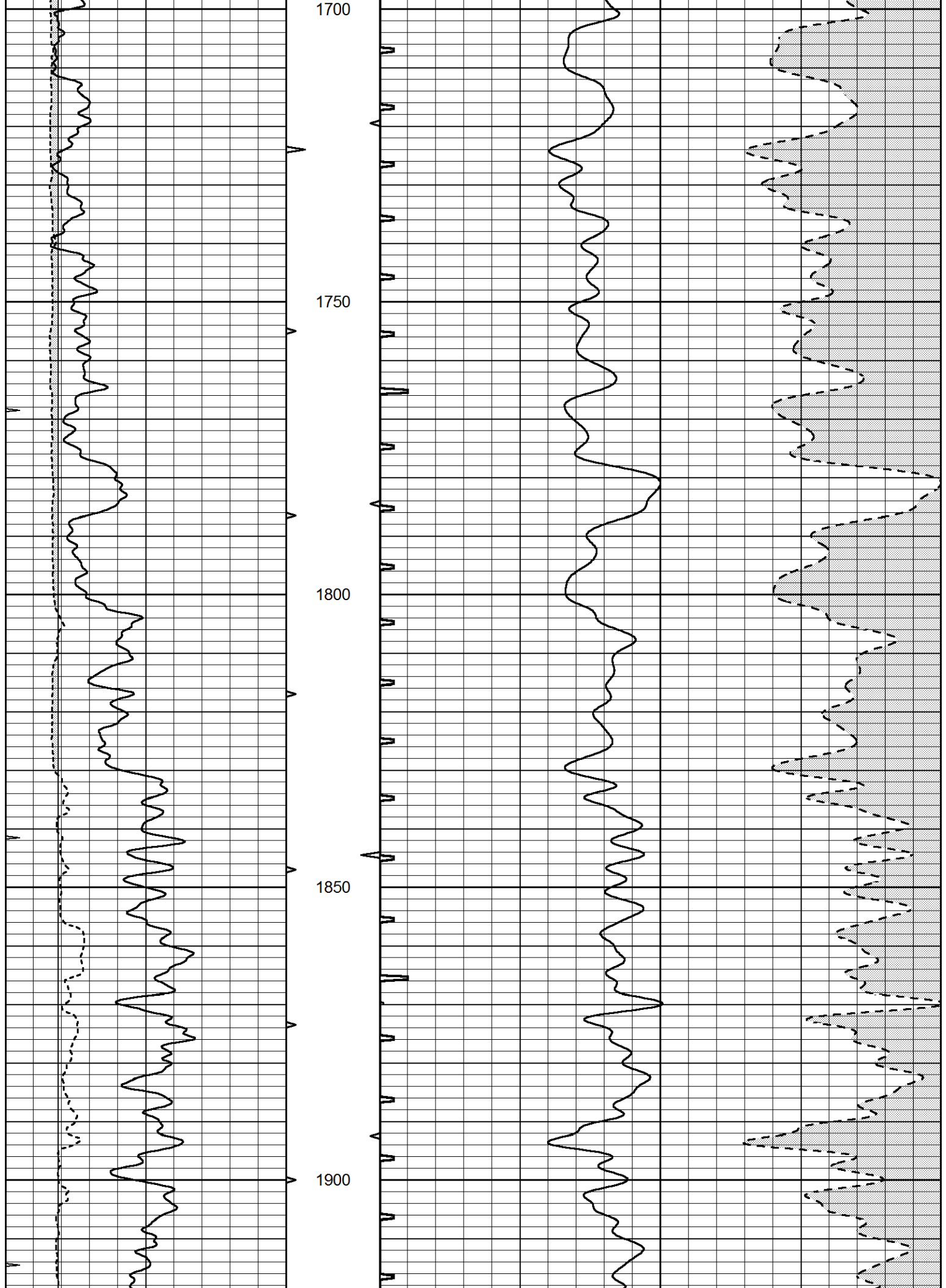
1000

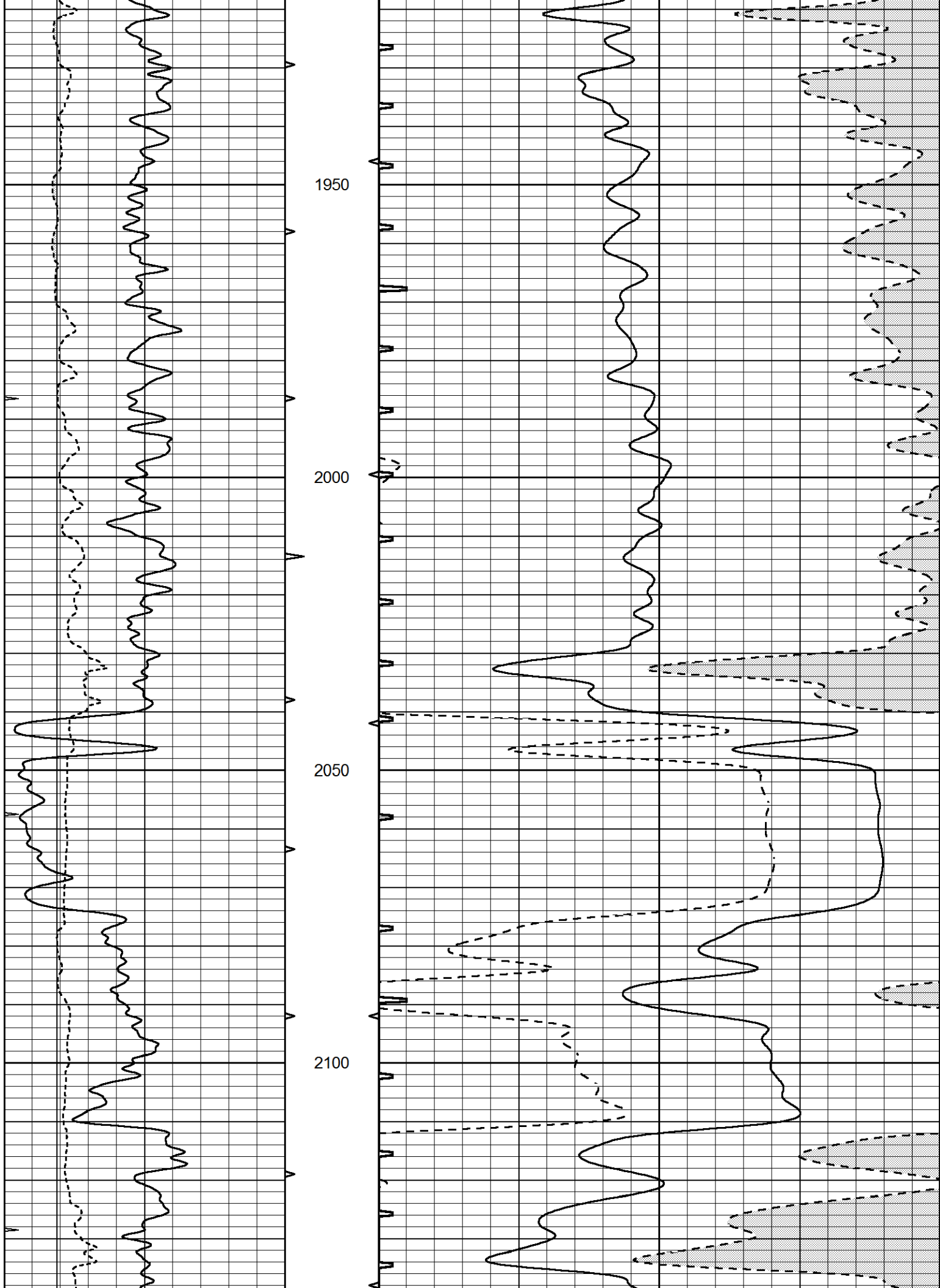


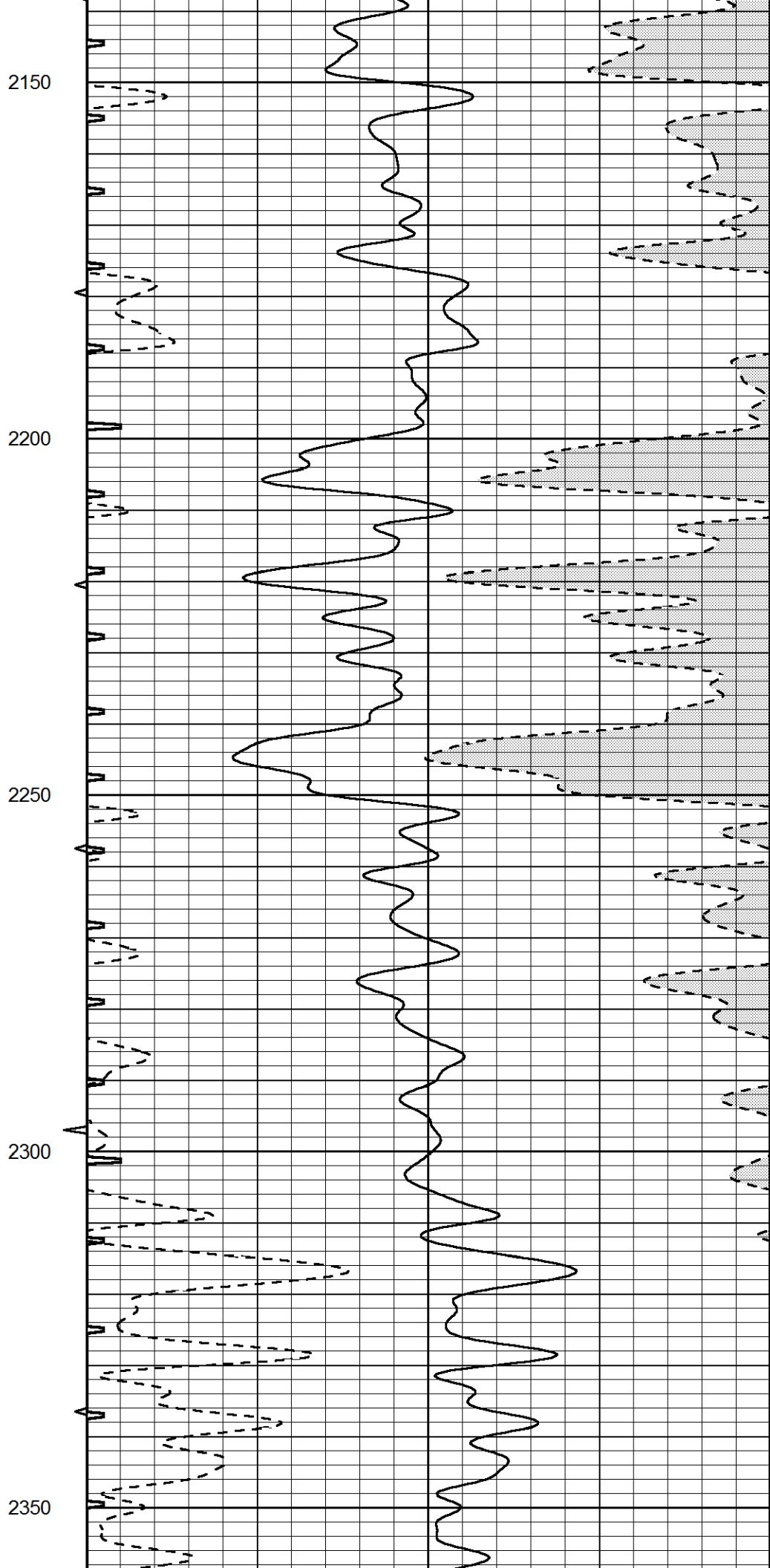
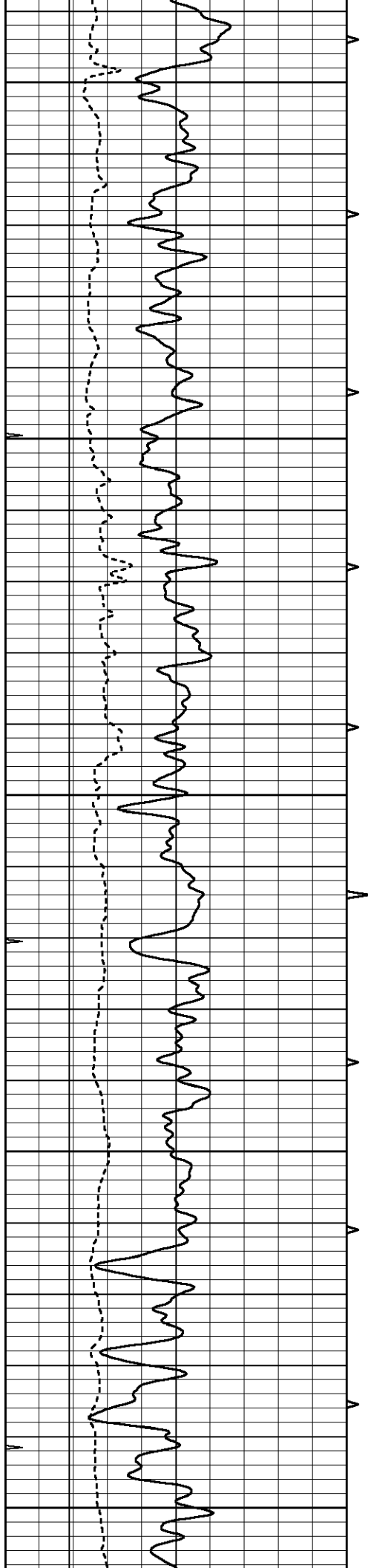


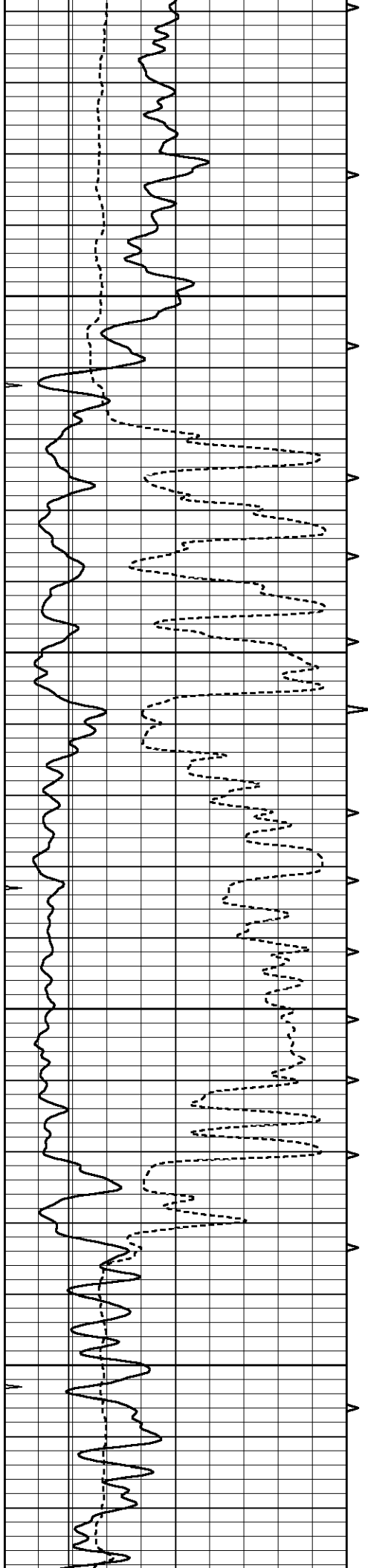










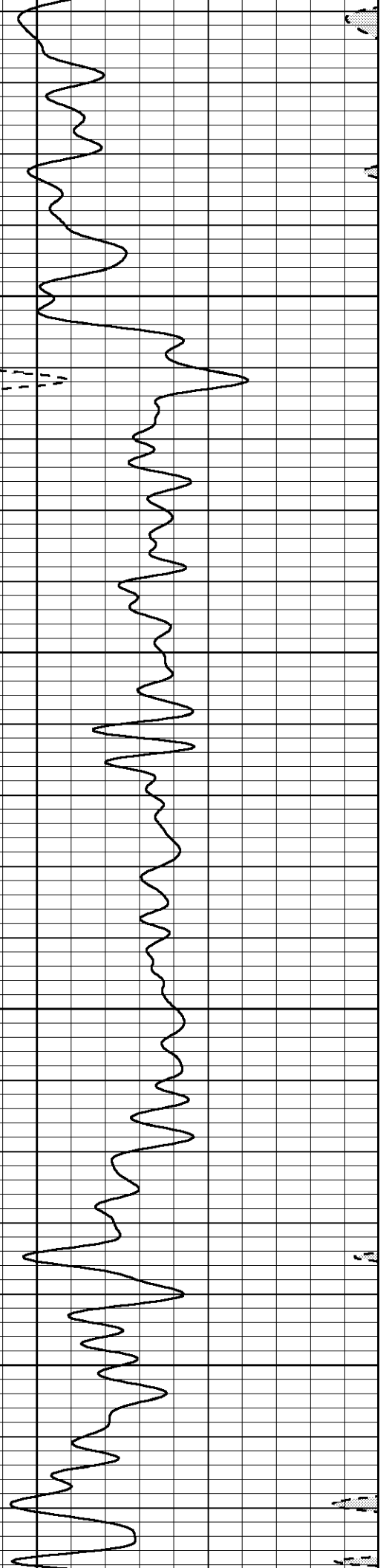
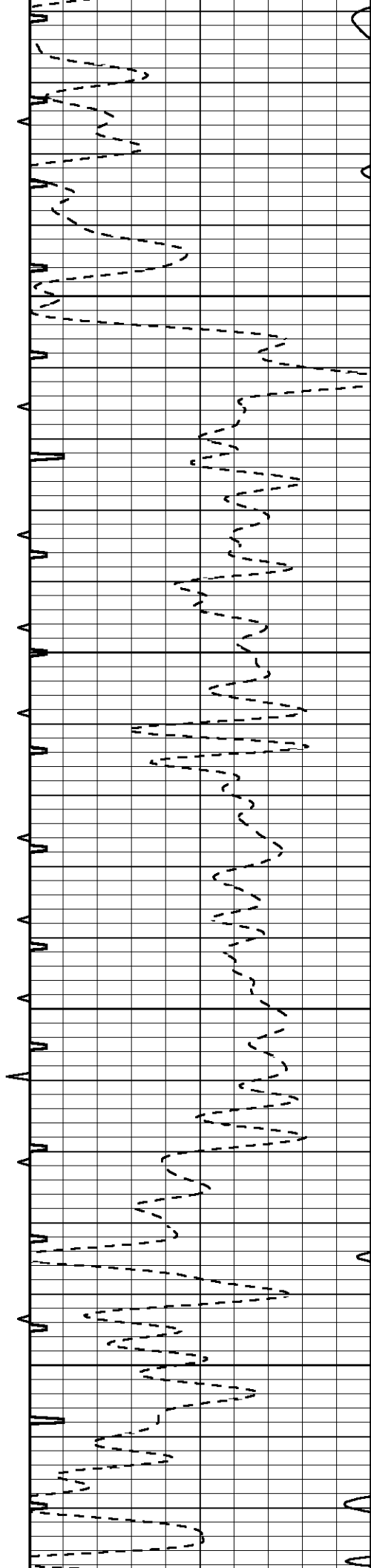


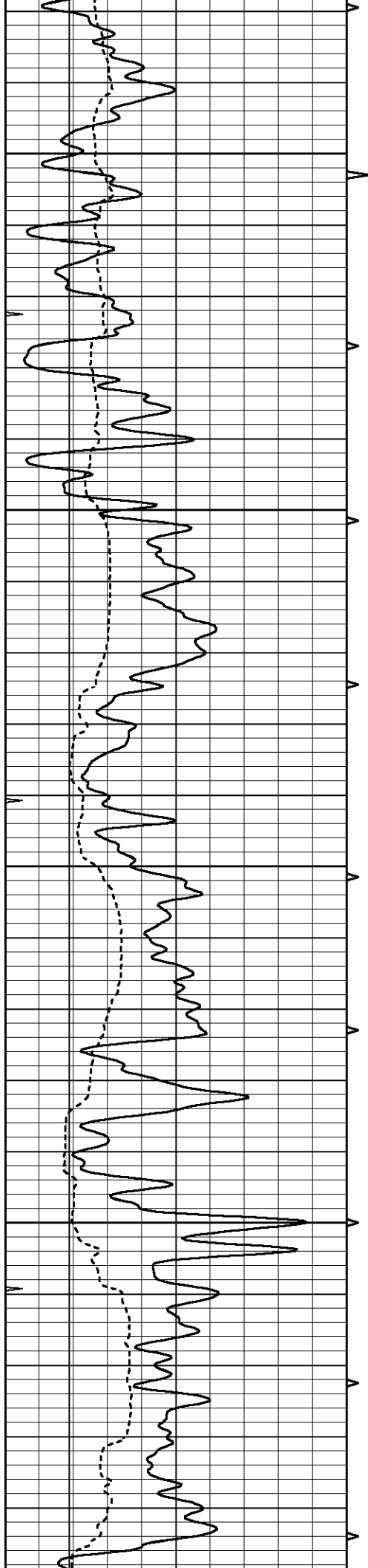
2400

2450

2500

2550



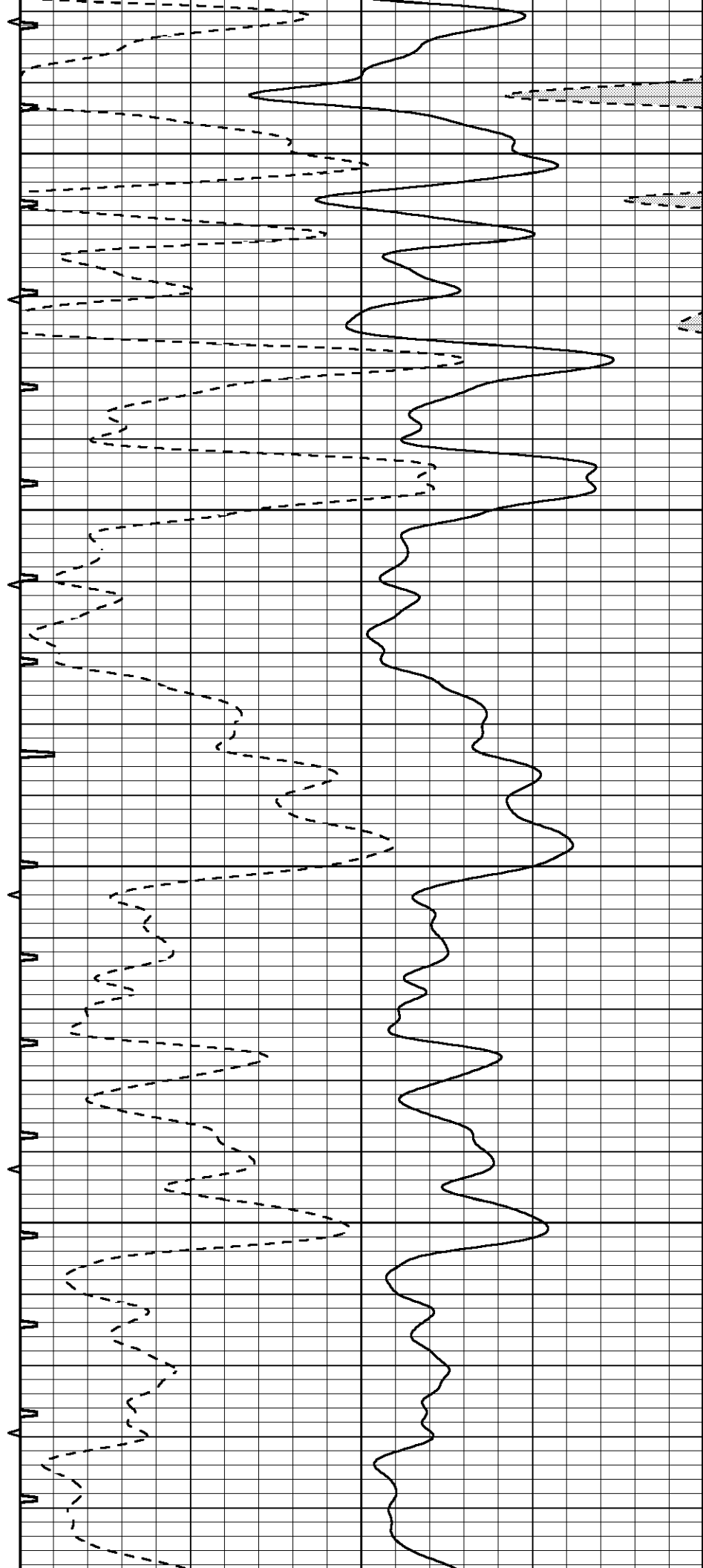


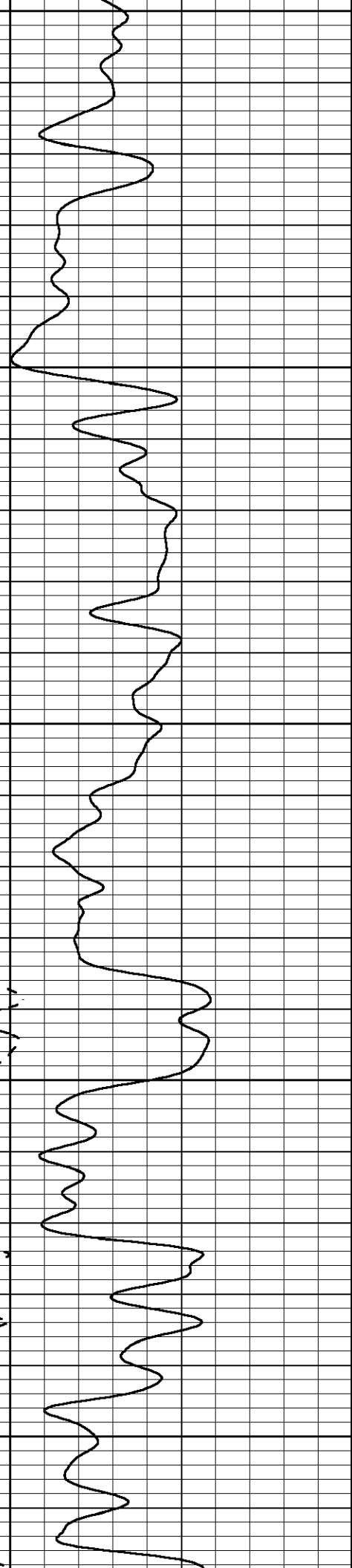
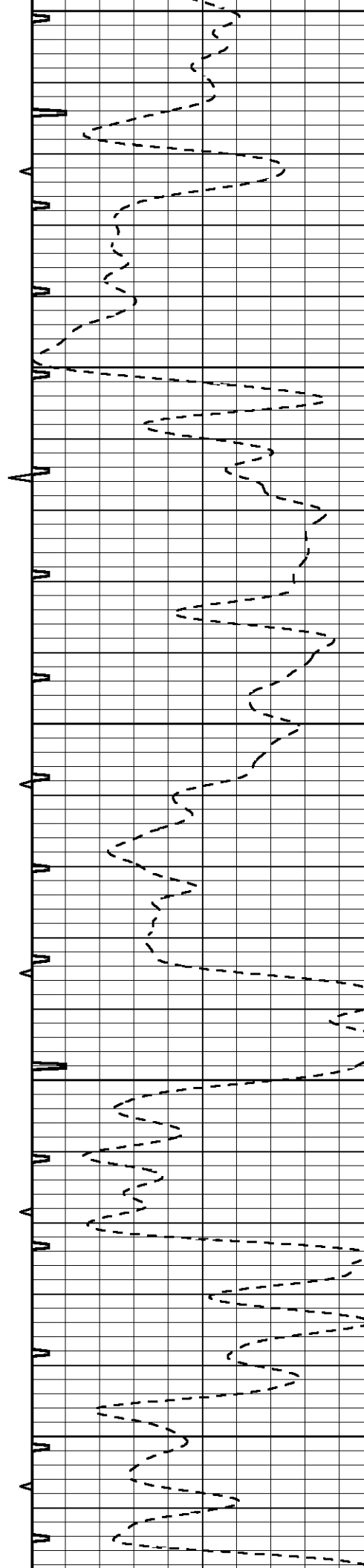
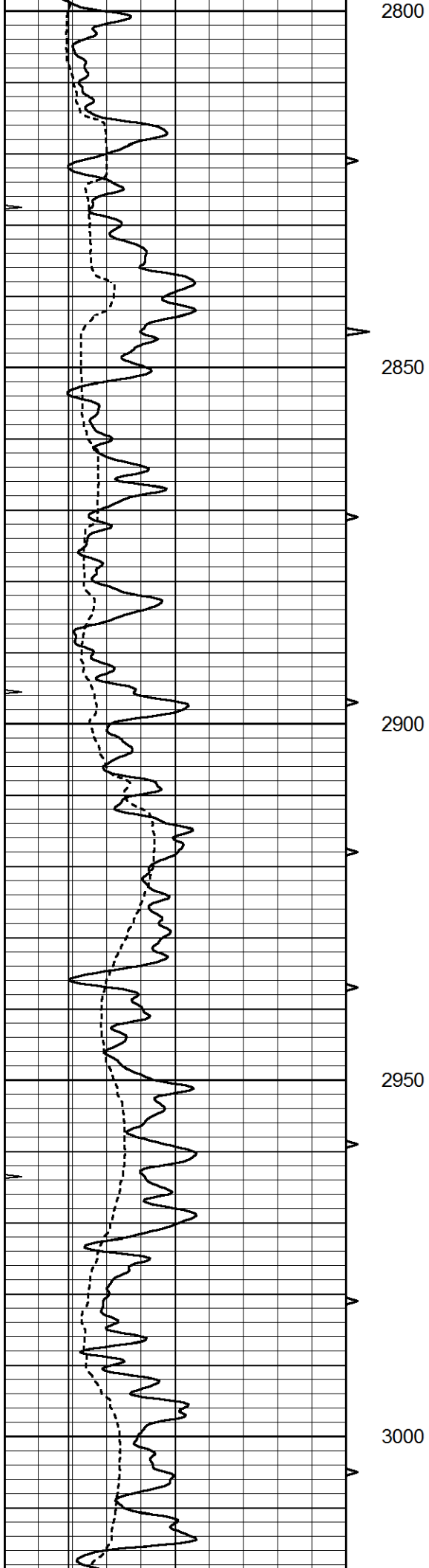
2600

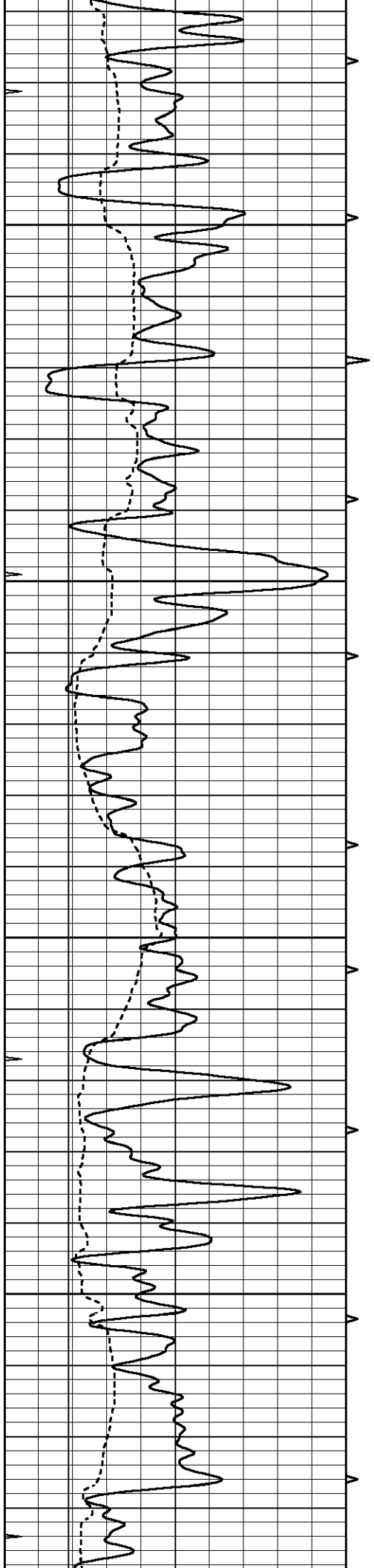
2650

2700

2750





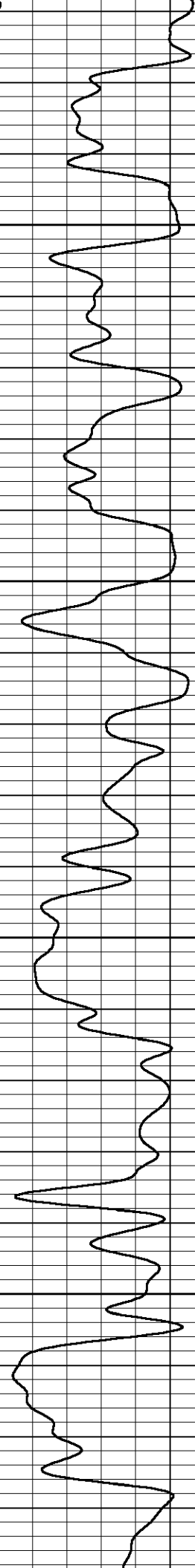
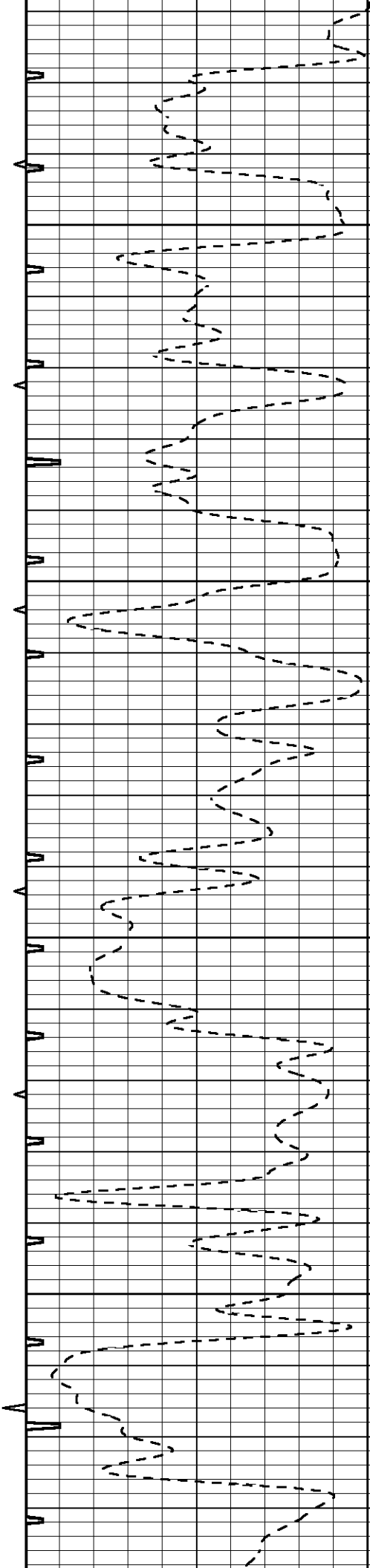


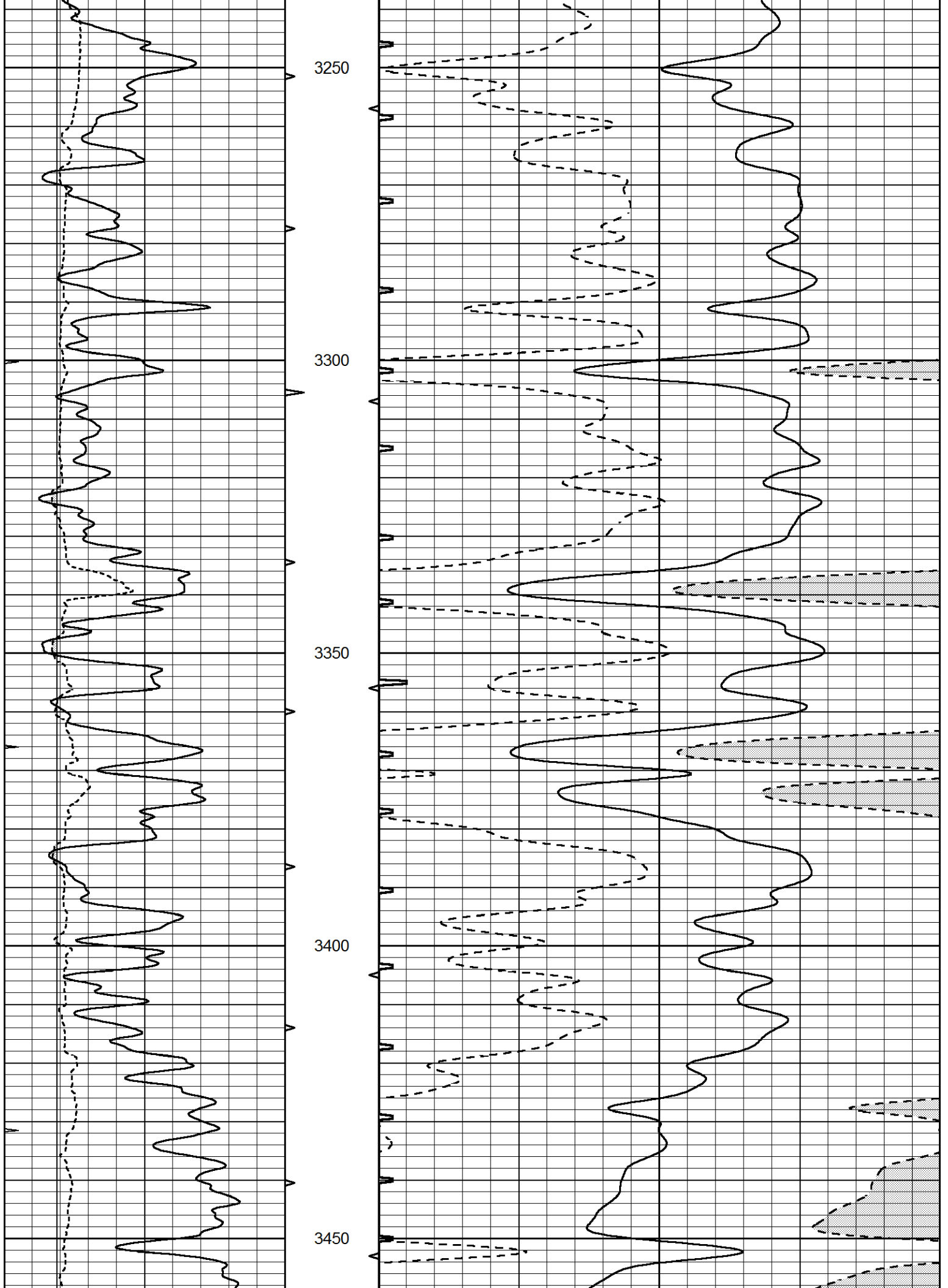
3050

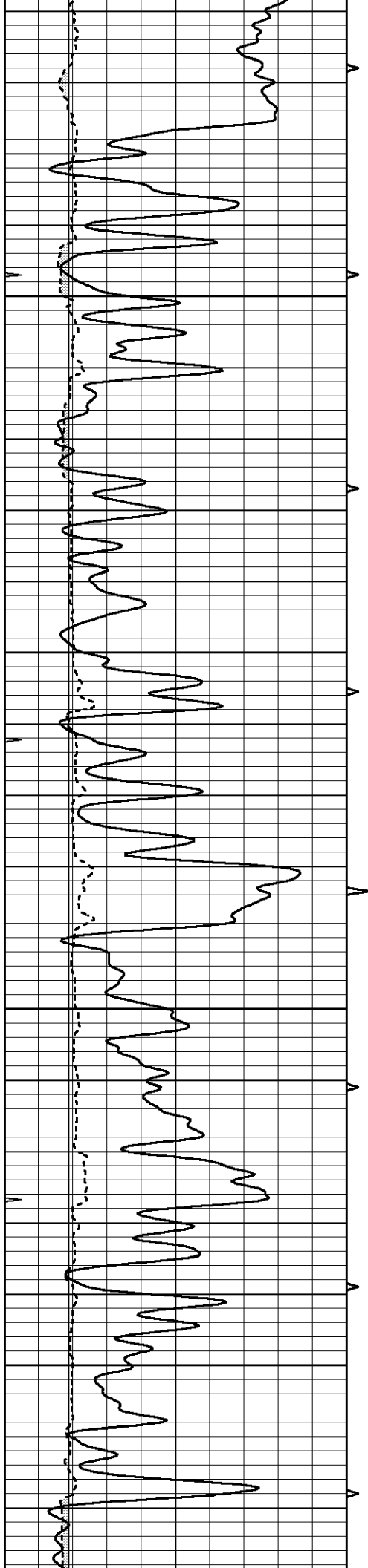
3100

3150

3200





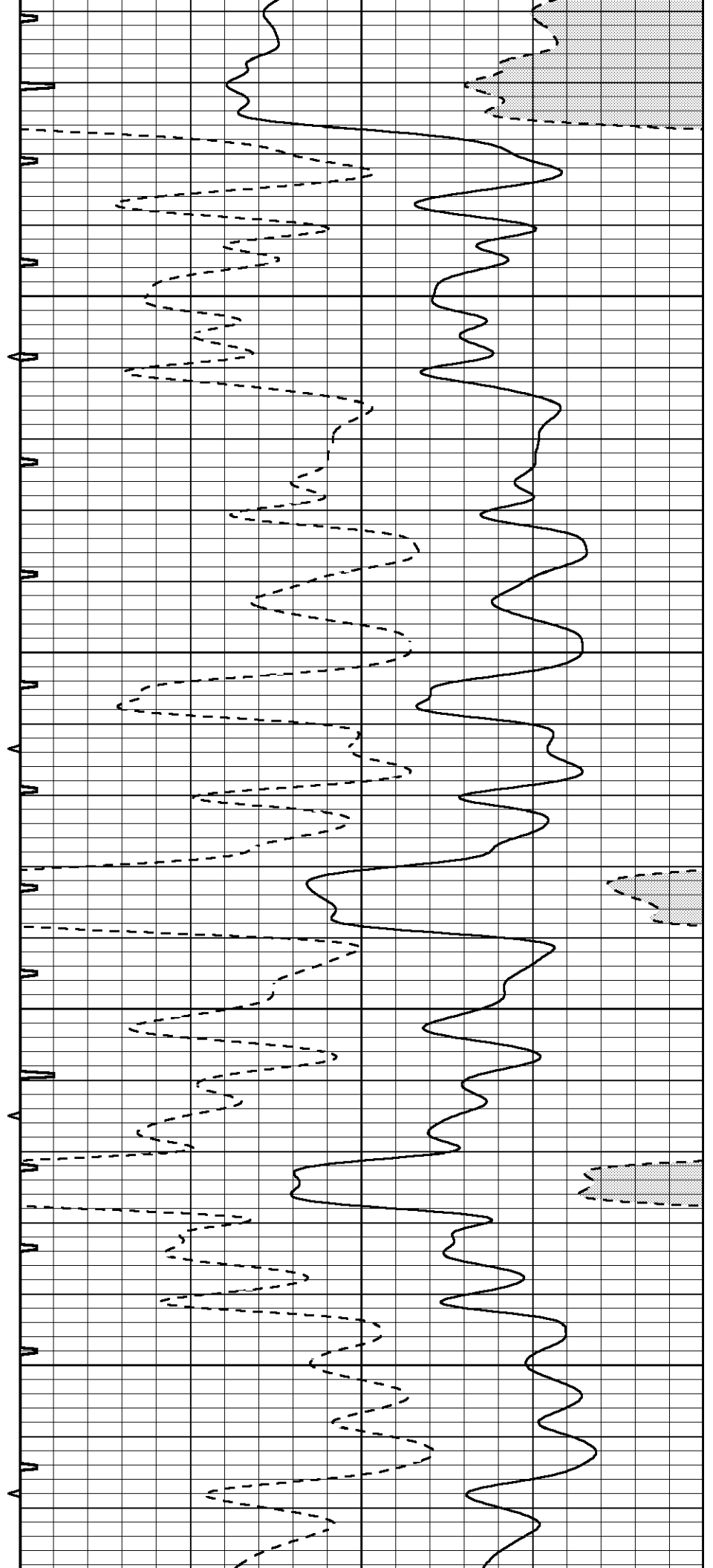


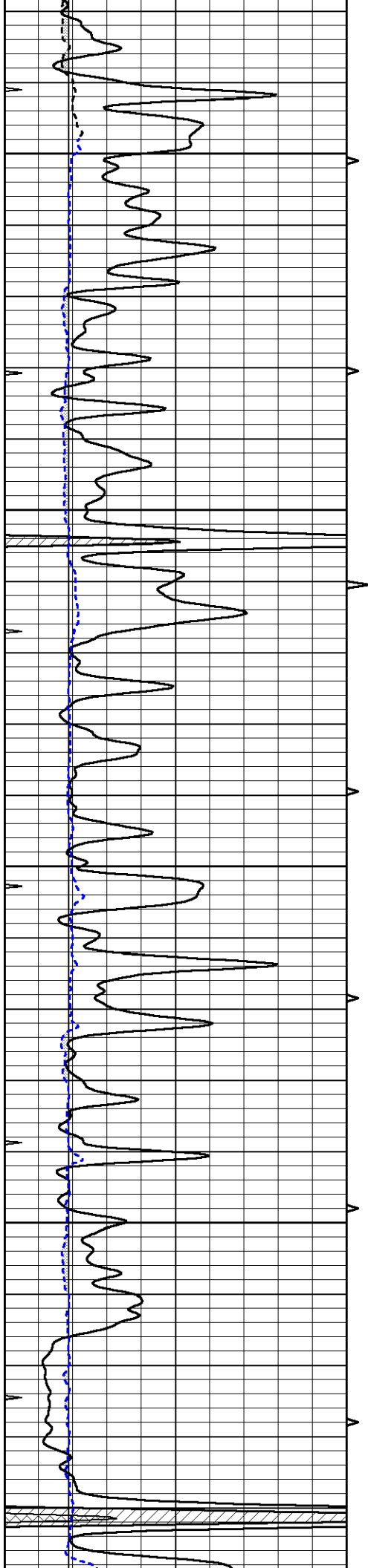
3500

3550

3600

3650



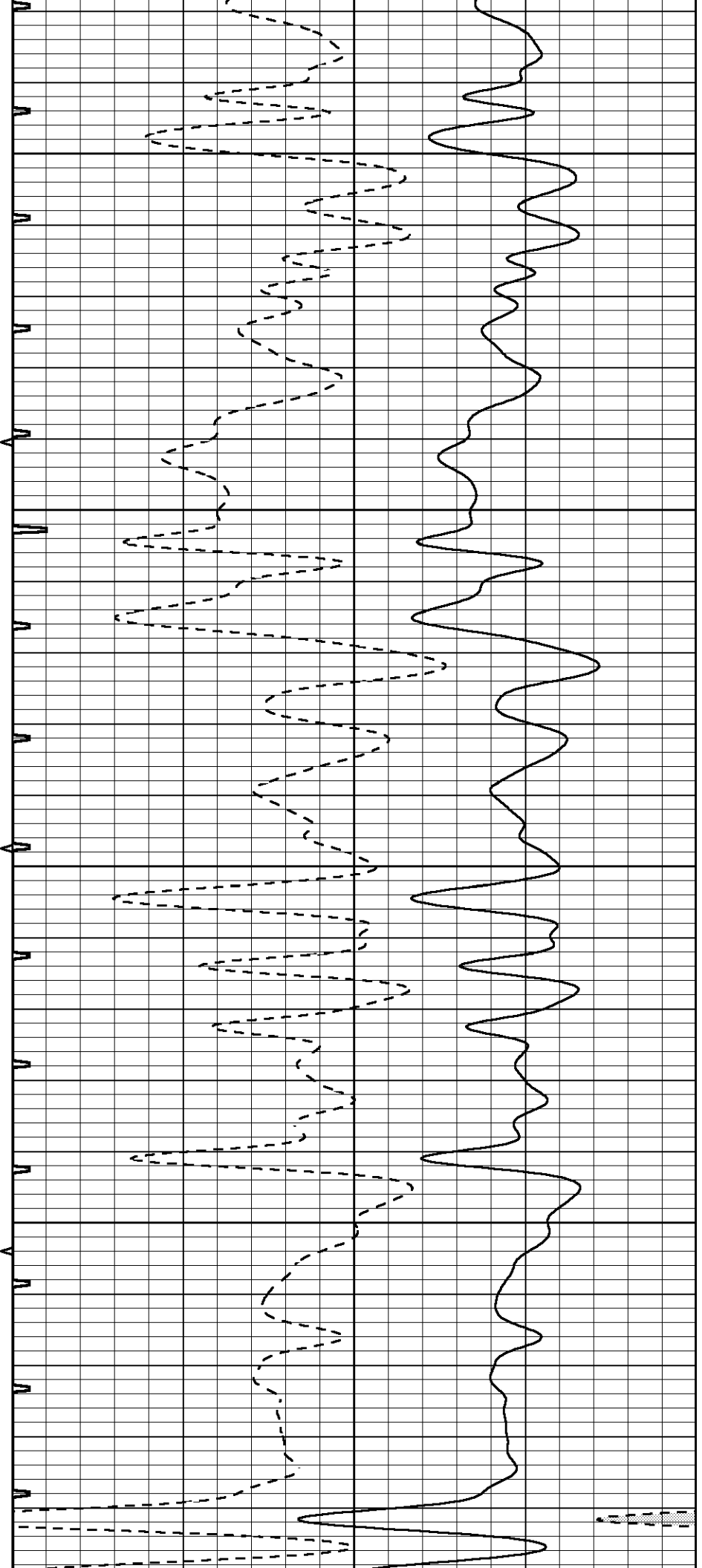


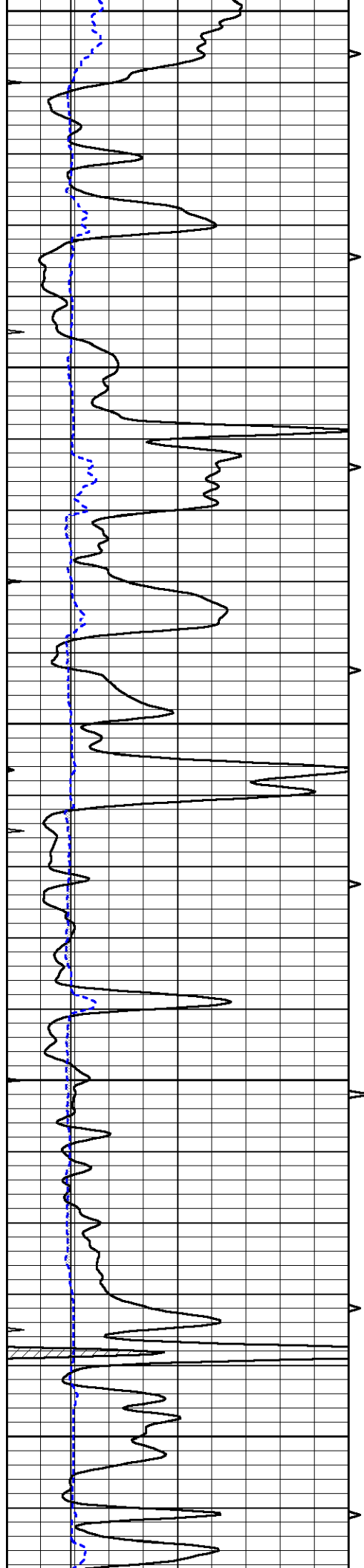
3700

3750

3800

3850





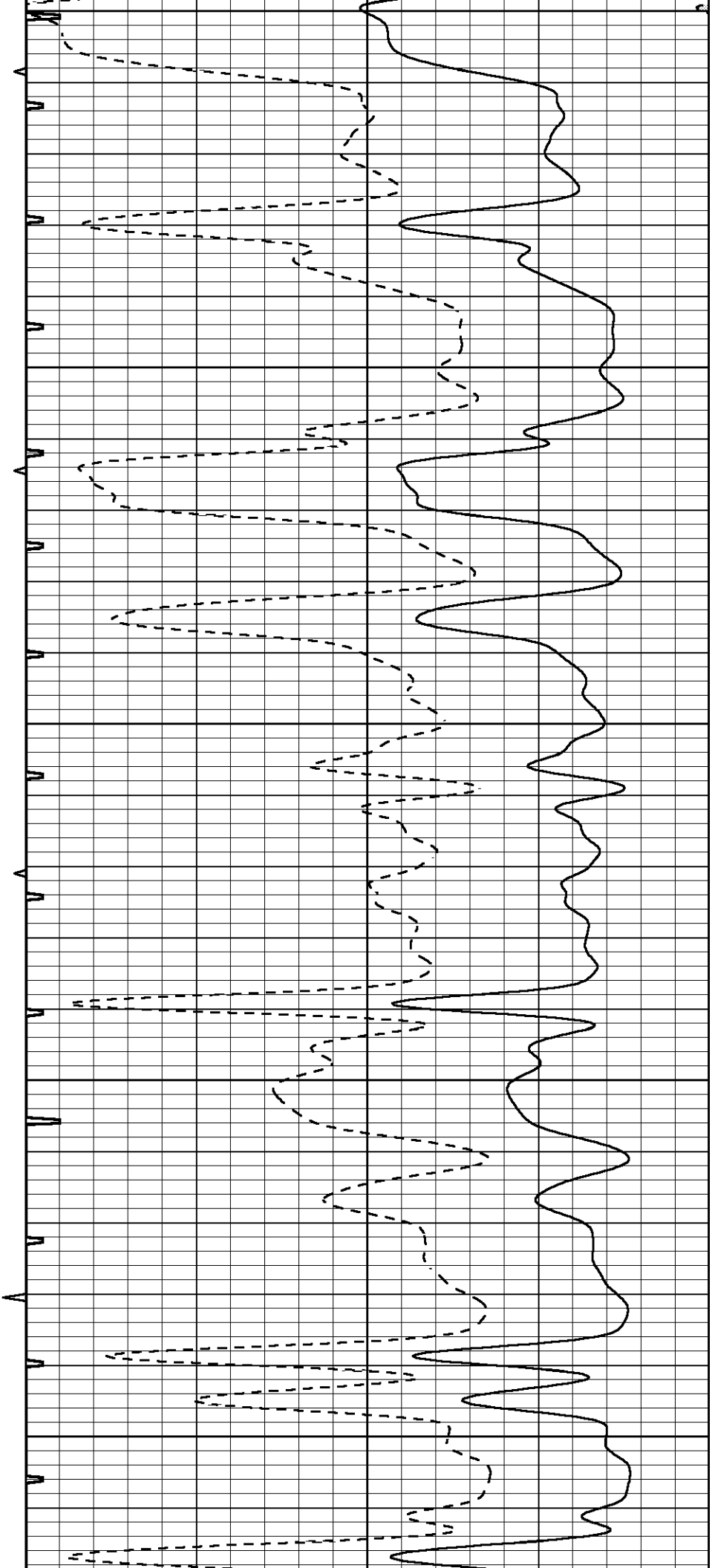
3900

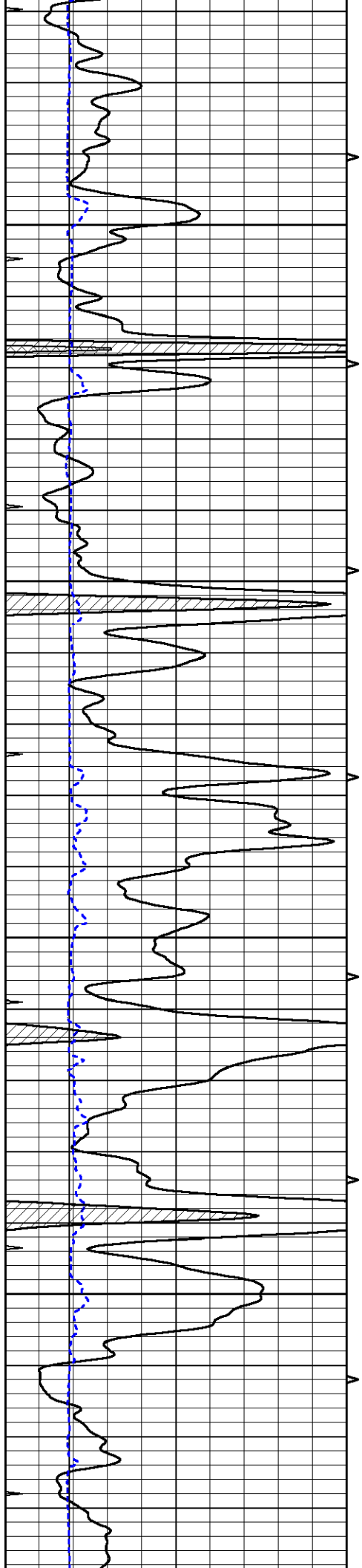
3950

4000

4050

4100



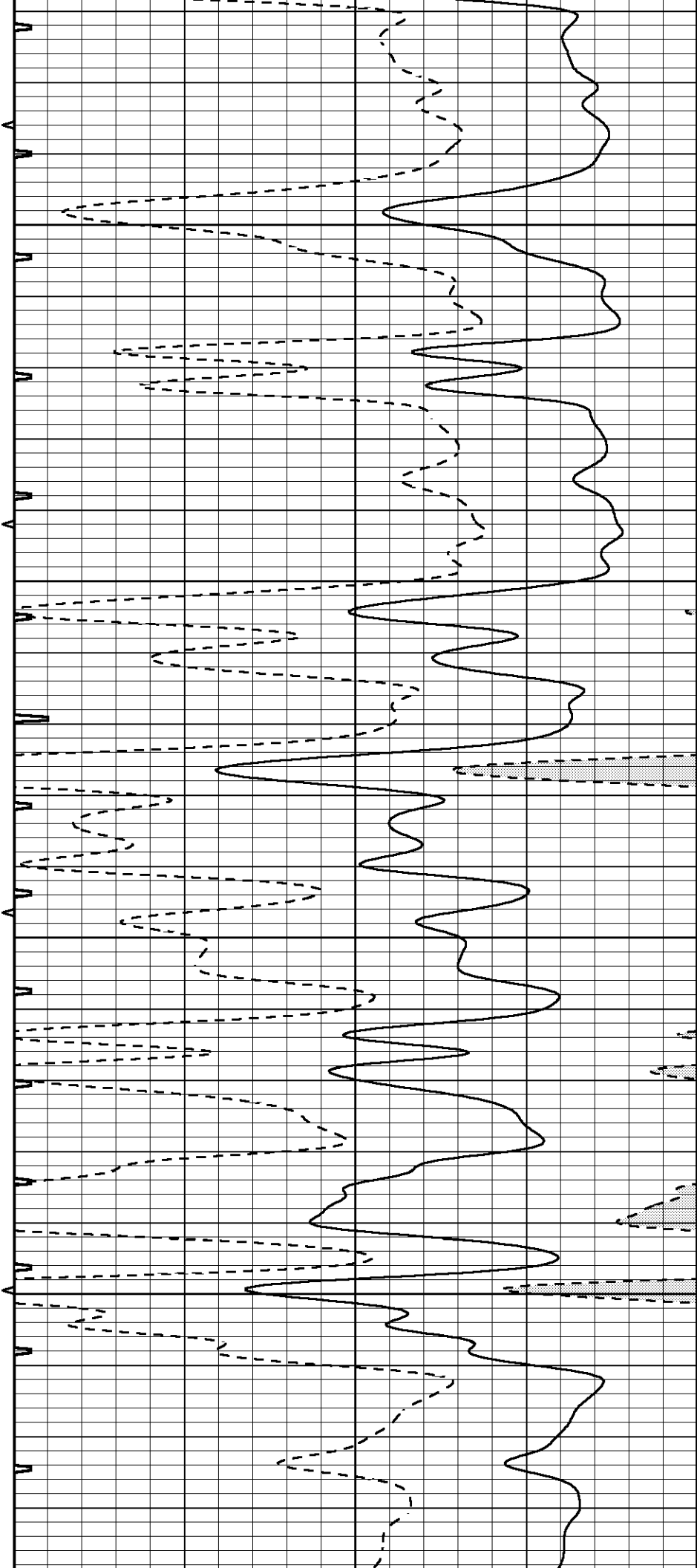


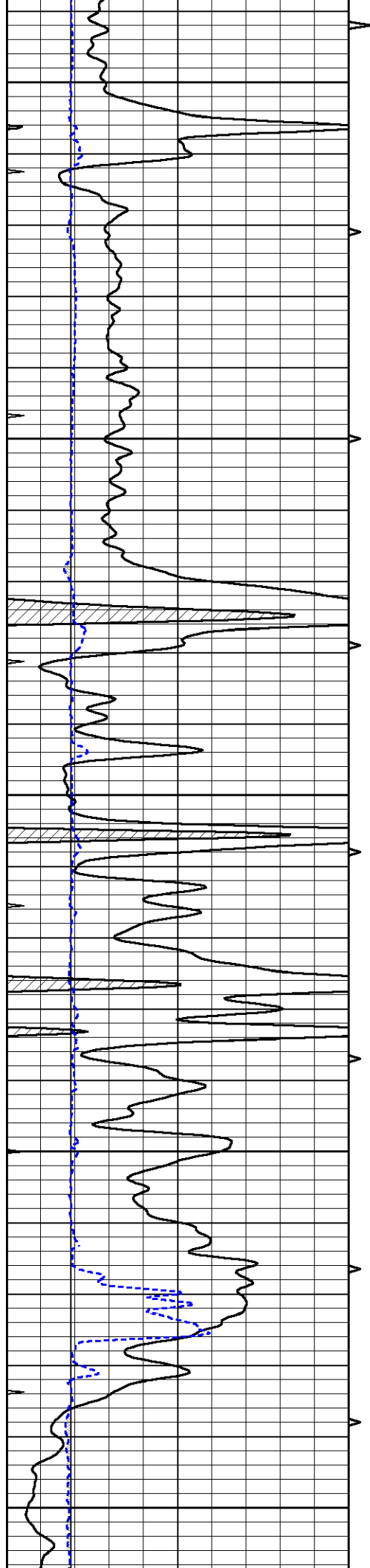
4150

4200

4250

4300





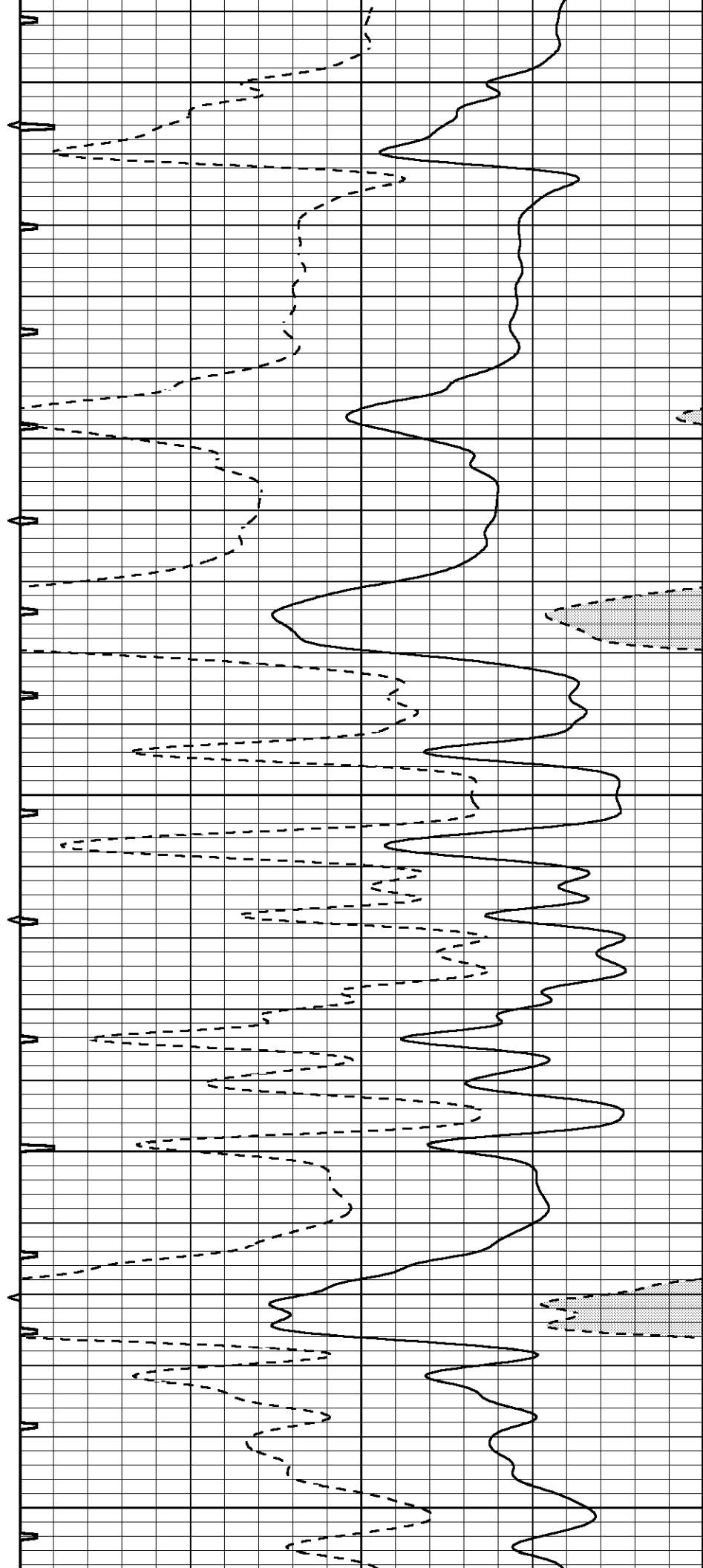
4350

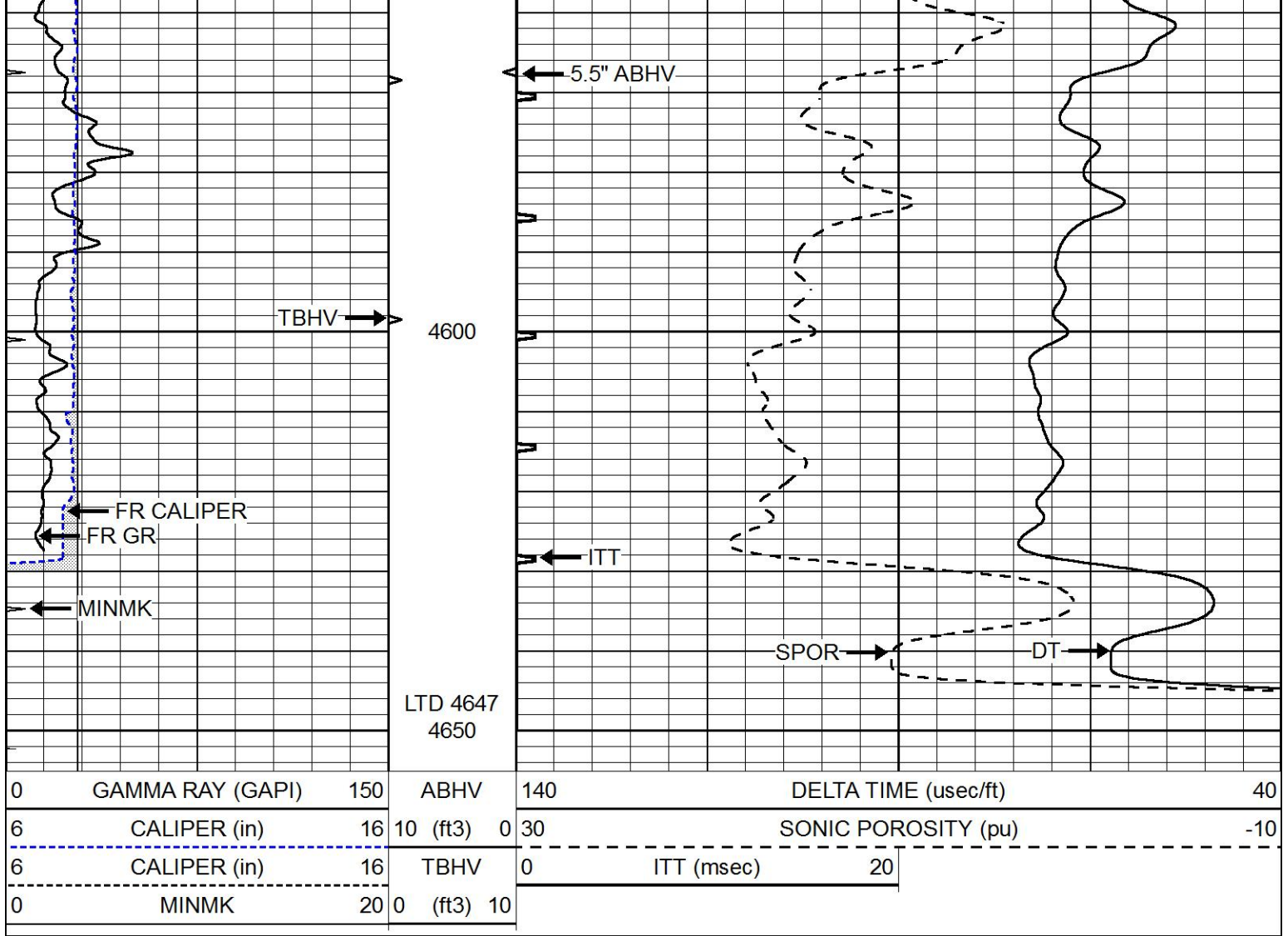
4400

4450

4500

4550

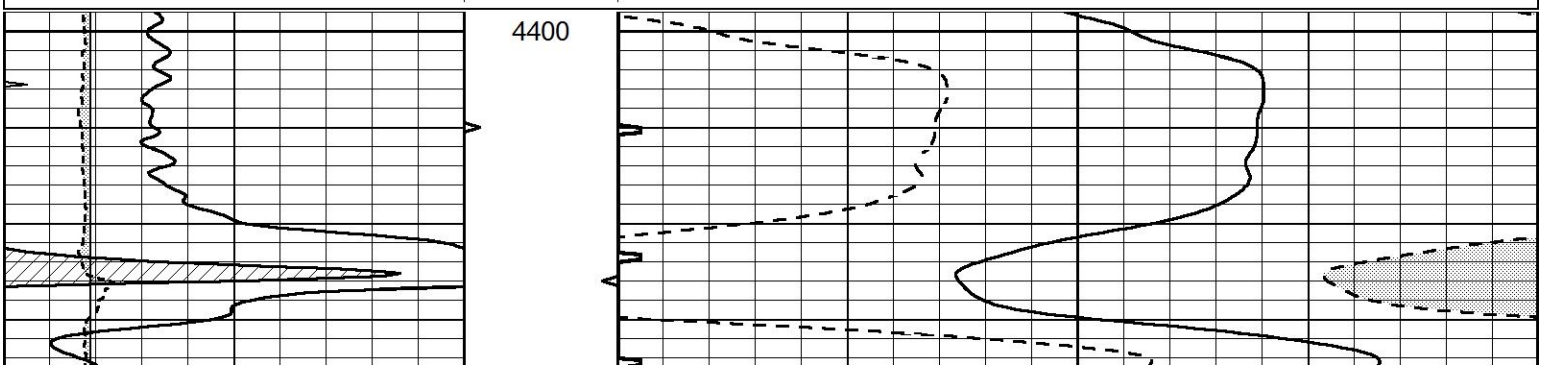


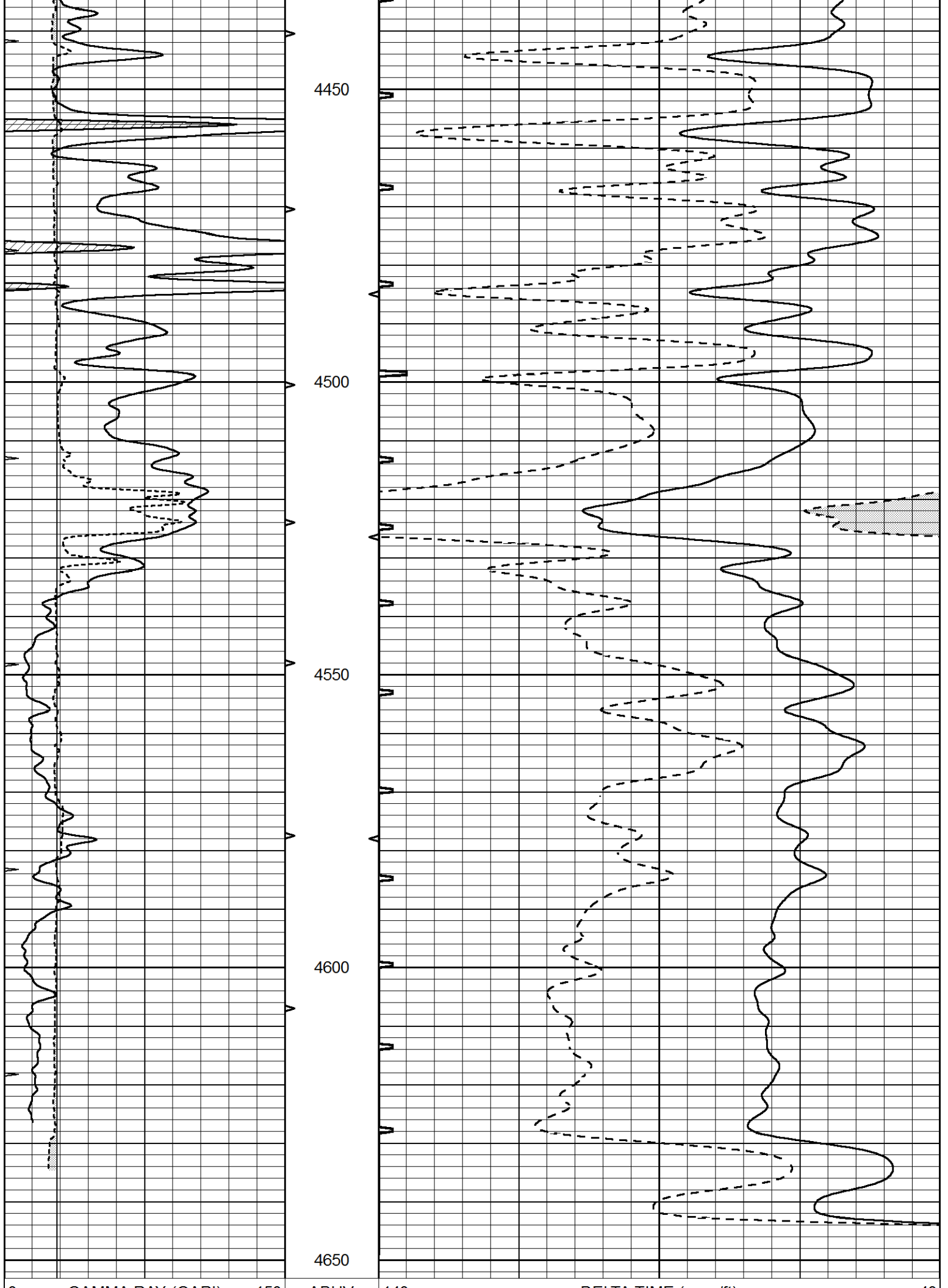


REPEAT SECTION

Database File 6338pe.db
 Dataset Pathname pass5.2R
 Presentation Format slt
 Dataset Creation Sun May 01 16:51:52 2022
 Charted by Depth in Feet scaled 1:240

0	GAMMA RAY (GAPI)	150	ABHV	140	DELTA TIME (usec/ft)	40
6	CALIPER (in)	16	10 (ft3) 0	30	SONIC POROSITY (pu)	-10
0	MINMK	20	TBHV	0	ITT (msec)	20
			0 (ft3) 10			





0	GAMMA RAY (GAPI)	150	ABHV	140	DELTA TIME (usec/ft)	40
6	CALIPER (in)	16	10 (ft3) 0	30	SONIC POROSITY (pu)	-10
0	MINMK	20	TBHV	0	ITT (msec)	20
			0 (ft3) 10			