

MICRO  
LOG



Company MULL DRILLING COMPANY, INC.  
Well SNYDER #4-11  
Field UTICA NORTHEAST  
County NESS State KANSAS

Location: API #: 15-135-26163-0000  
381' FNL & 1342' FWL  
SW - NW - NE - NW  
Permanent Datum GROUND LEVEL Elevation 2619  
Log Measured From KELLY BUSHING 7' A.G.L.  
Drilling Measured From KELLY BUSHING  
SEC 11 TWP 16S RGE 26W  
Other Services  
CDL/CNL/DIL  
SONIC/PE  
Elevation  
K.B. 2612  
D.F. 2610  
G.L. 2619

Date	5/1/22		
Run Number	TWO		
Depth Driller	4650		
Depth Logger	4647		
Bottom Logged Interval	4631		
Top Log Interval	3700		
Casing Driller	8 5/8"@223'		
Casing Logger	223'		
Bit Size	7 7/8"		
Type Fluid in Hole	CHEMICAL MUD	CHLORIDES 2.500 PPM	
Density / Viscosity	9.3/56		
pH / Fluid Loss	10.0/6.0		
Source of Sample	FLOWLINE		
Rm @ Meas. Temp	1.60@72F		
Rmf @ Meas. Temp	1.20@72F		
Rmc @ Meas. Temp	1.92@72F		
Source of Rmf / Rmc	MEASUREMENT		
Rm @ BHT	.944@122F		
Time Circulation Stopped	4.5 HOURS		
Time Logger on Bottom	4:00 P.M.		
Maximum Recorded Temperature	122F		
Equipment Number	922339		
Location	HAYS, KANSAS		
Recorded By	JEFF LUEBBERS	COLE ROBBEN	
Witnessed By	BLAKE MILLER		

<<< Fold Here >>>

All interpretations are opinions based on inferences from electrical or other measurements and we cannot and do not guarantee the accuracy or correctness of any interpretation, and we shall not, except in the case of gross or willful negligence on our part, be liable or responsible for any loss, costs, damages, or expenses incurred or sustained by anyone resulting from any interpretation made by any of our officers, agents or employees. These interpretations are also subject to our general terms and conditions set out in our current Price Schedule.

15-135-26163-0000 Comments

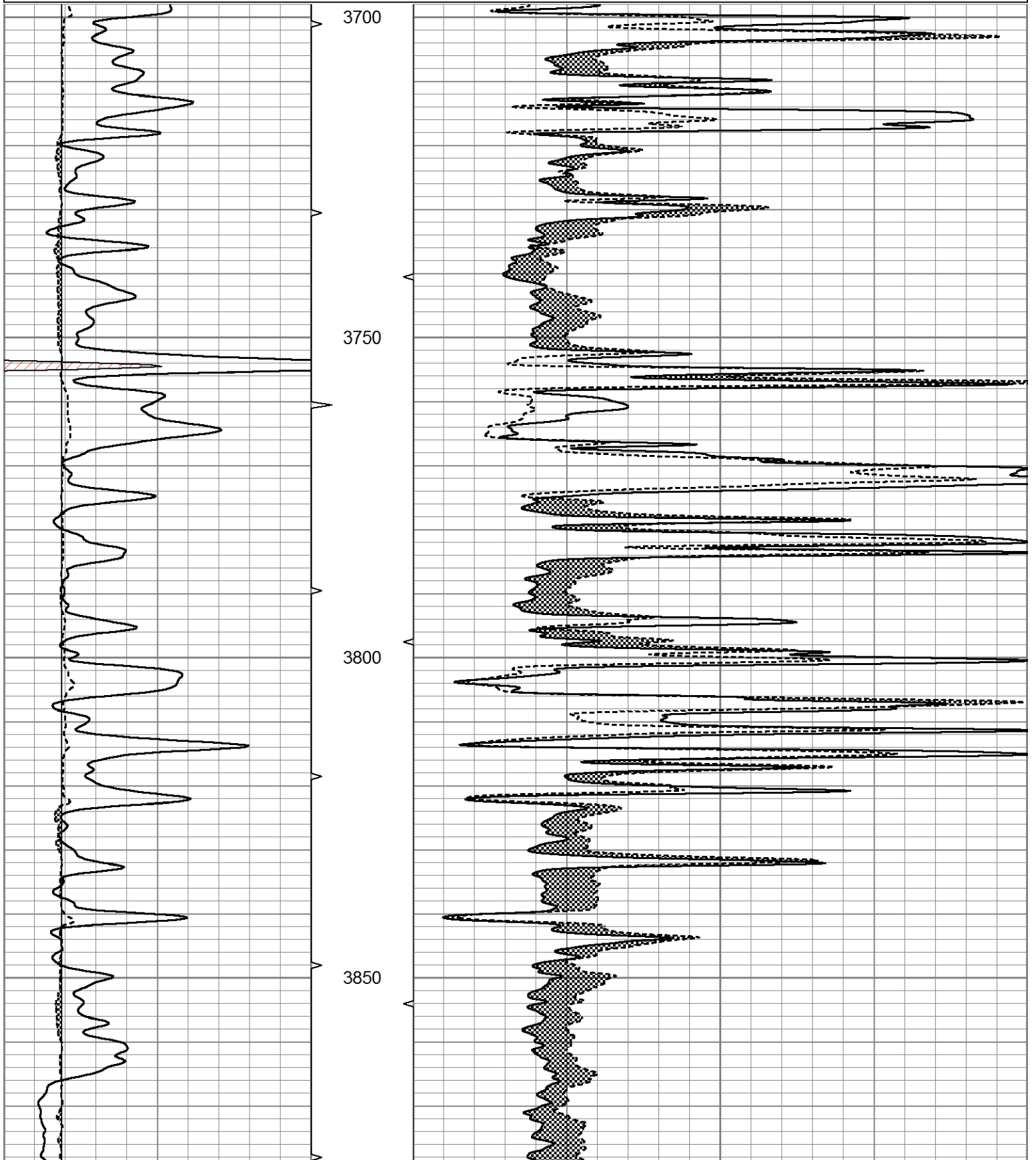
THANK YOU FOR USING ELI WIRELINE HAYS, KANSAS (785) 628-6395  
DIRECTIONS  
UTICA, KS AND HIGHWAY 4, 3 NORTH ON RD D TO 290 RD. 1/4 E AND SOUTH INTO

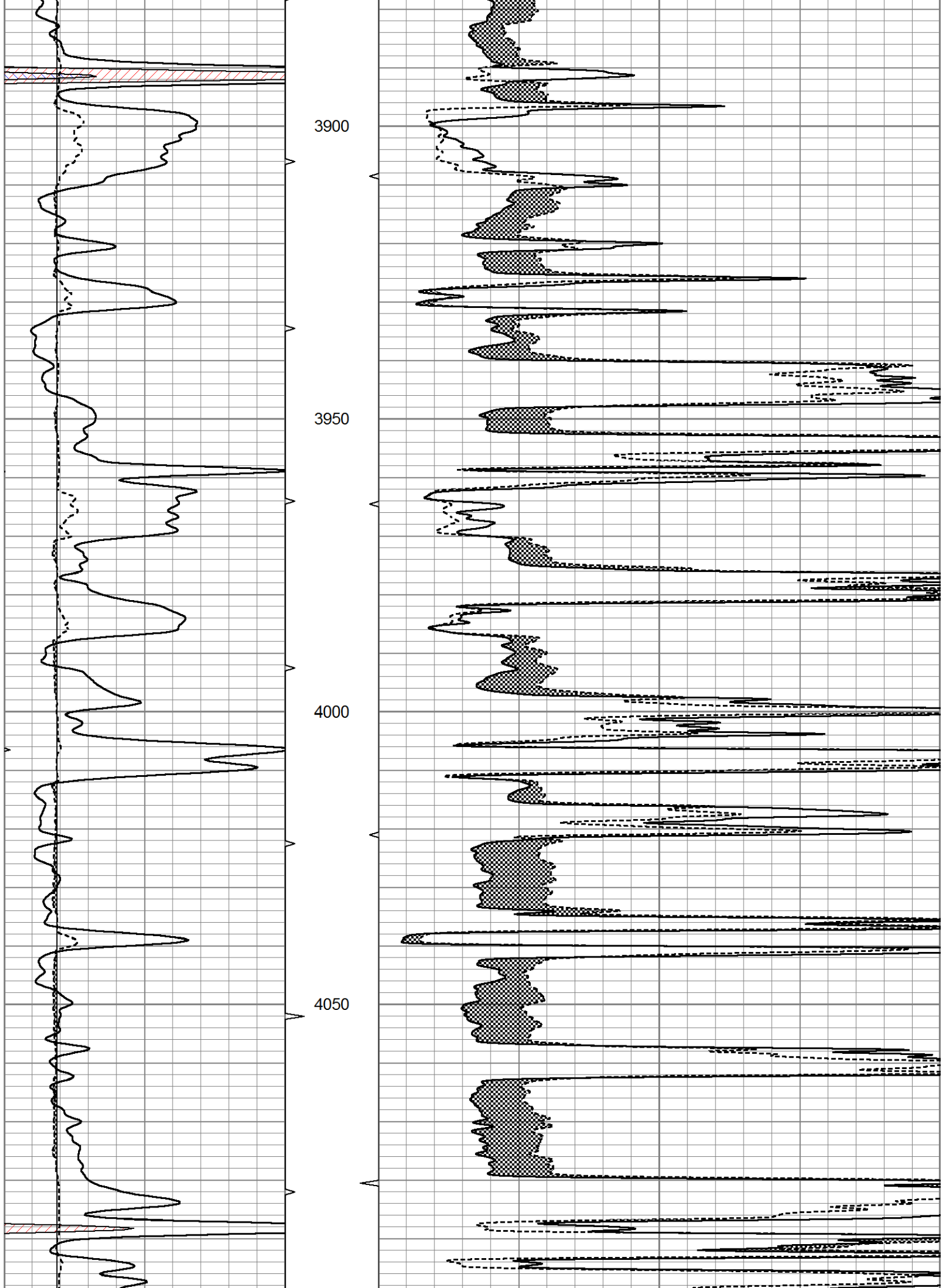


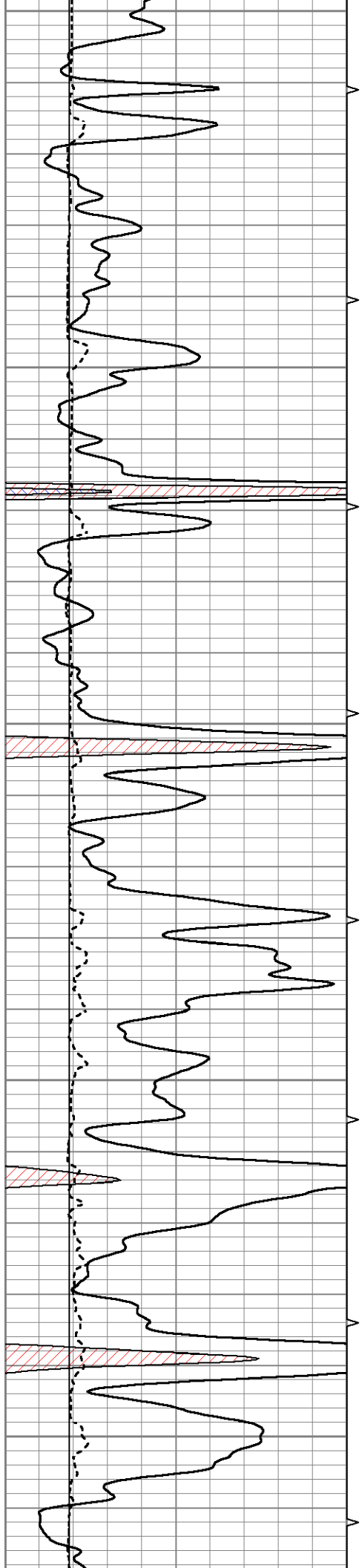
MAIN SECTION

Database File 6338pe.db  
 Dataset Pathname pass6.1M  
 Presentation Format micro  
 Dataset Creation Sun May 01 17:12:37 2022  
 Charted by Depth in Feet scaled 1:240

0	GR (GAPI)	150	ABHV	0	MEL20 (Ohm-m)	40
6	DCAL (in)	16	10 (ft3)	0	MEL15 (Ohm-m)	40
			ABHV			
			0 (ft3)	10		







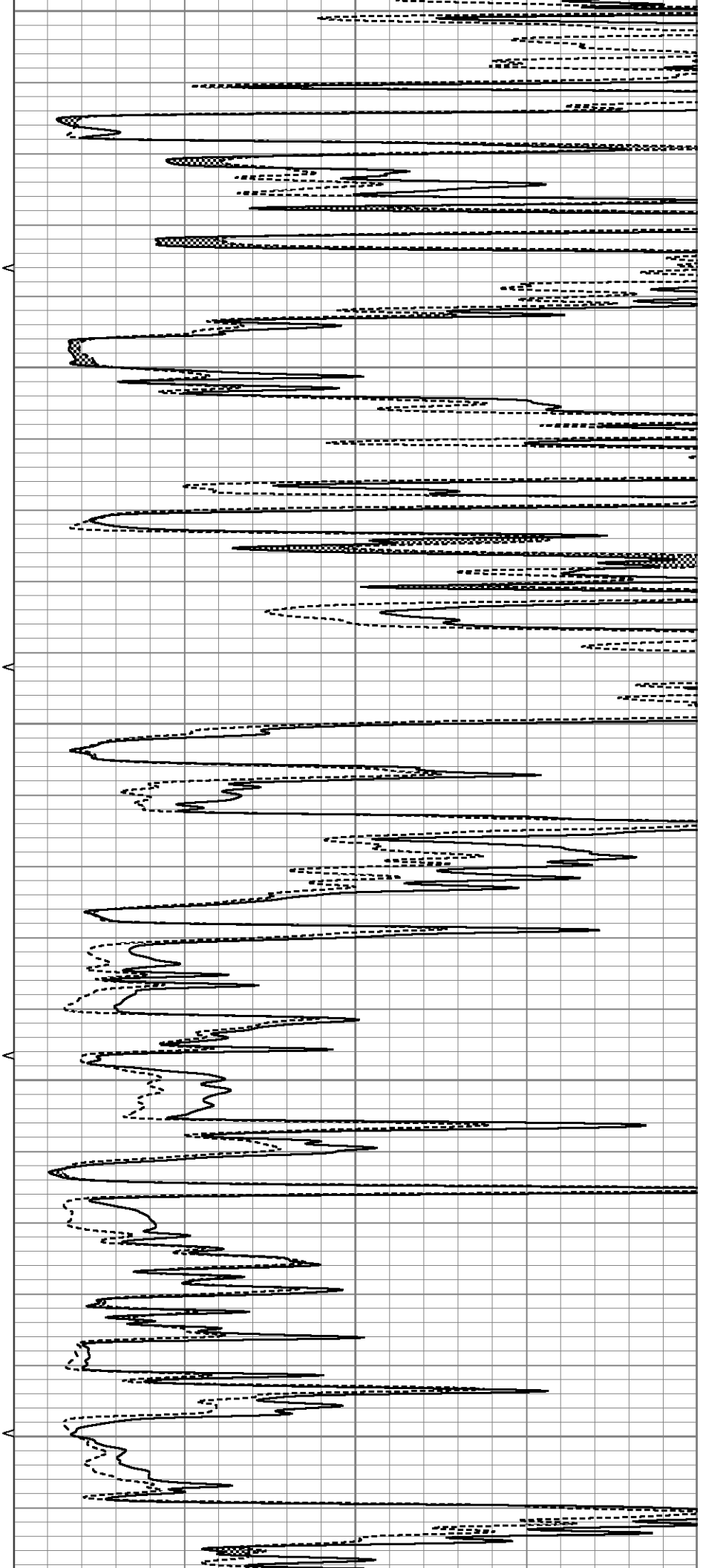
4100

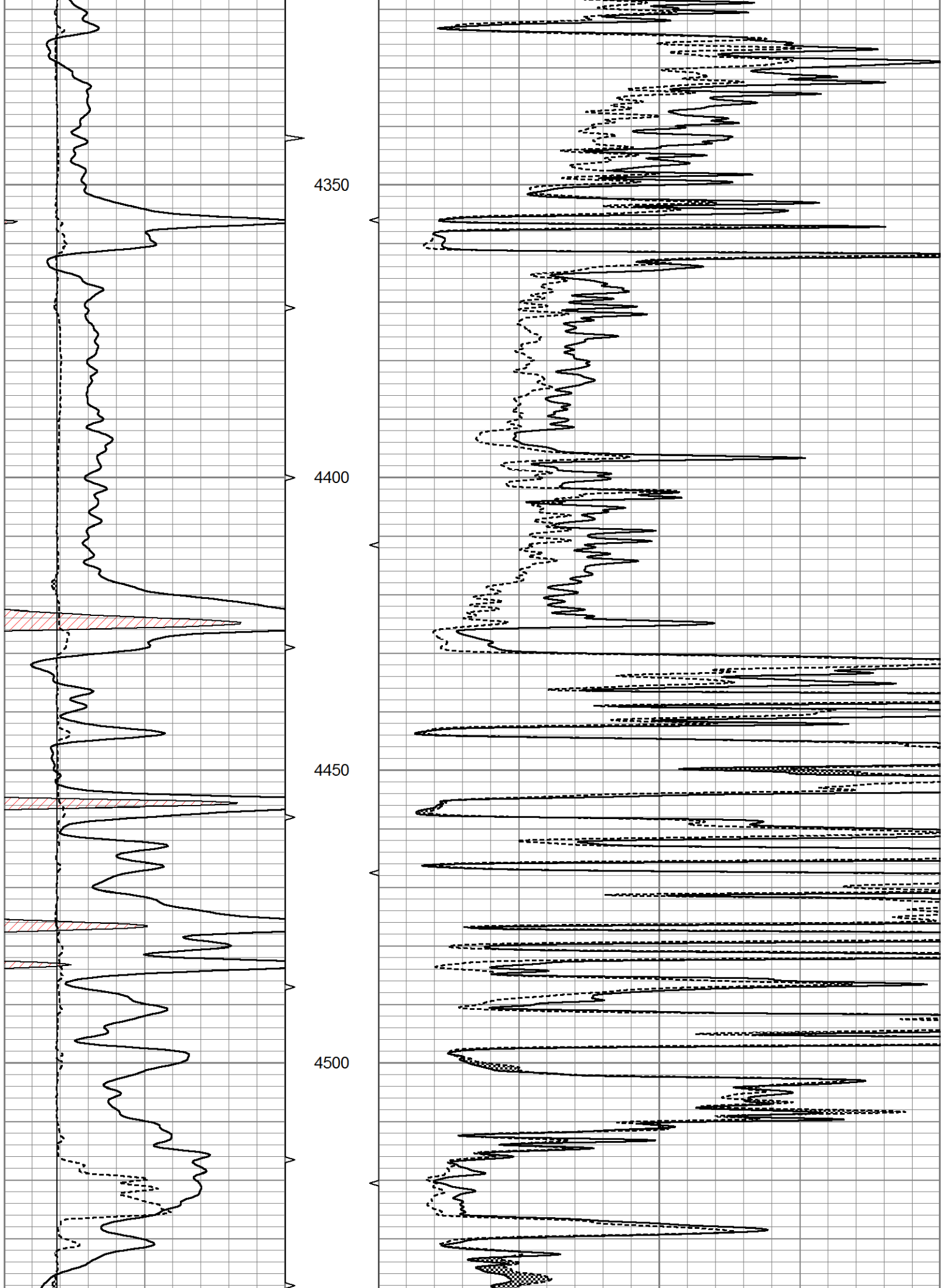
4150

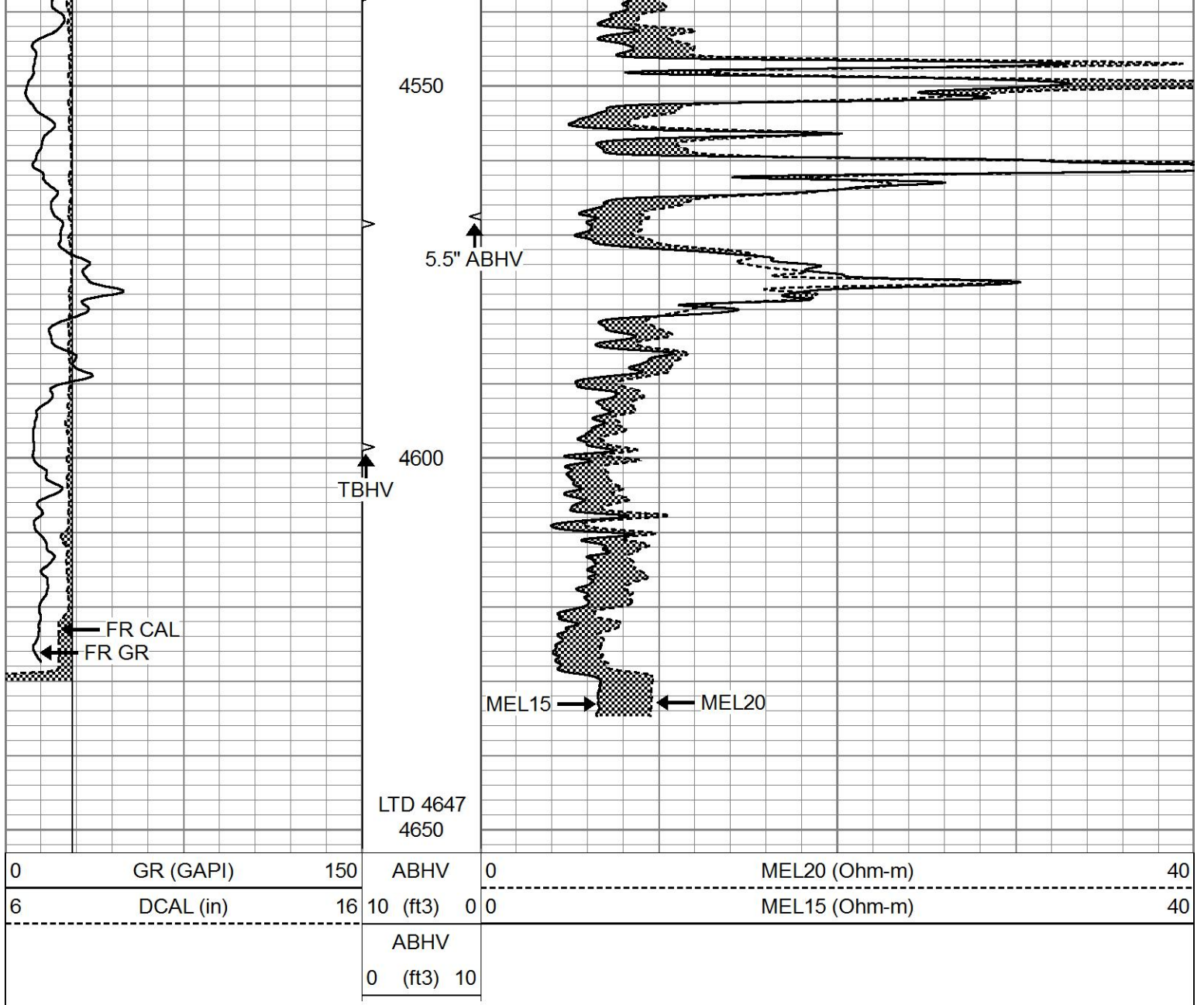
4200

4250

4300







# REPEAT SECTION

Database File 6338pe.db  
 Dataset Pathname pass5.2R  
 Presentation Format micro  
 Dataset Creation Sun May 01 16:51:52 2022  
 Charted by Depth in Feet scaled 1:240

0	GR (GAPI)	150	ABHV	0	MEL20 (Ohm-m)	40
6	MELCAL (in)	16	10 (ft3)	0	MEL15 (Ohm-m)	40
			ABHV			
			0 (ft3)	10		

