



**COMPENSATED
DENSITY/NEUTRON
PE LOG**

Company **STELBAR OIL CORPORATION, INC.**
 Well **BPC TRUST #1-10**
 Field **UNNAMED**
 County **WALLACE** State **KANSAS**

Location: **API #: 15-199-20456-0000**
548' FSL & 343' FWL
 SEC 10 TWP 14 RGE 41
 Permanent Datum **GROUND LEVEL Elevation 3761**
 Log Measured From **KELLY BUSHING 8' A.G.L**
 Drilling Measured From **KELLY BUSHING**

Company **STELBAR OIL CORPORATION, INC.**
 Well **BPC TRUST #1-10**
 Field **UNNAMED**
 County **WALLACE**
 State **KANSAS**

Date	2/10/22		
Run Number	ONE		
Depth Driller	5249		
Depth Logger	5244		
Bottom Logged Interval	5220		
Top Log Interval	2200		
Casing Driller	8 5/8" @ 556		
Casing Logger	556		
Bit Size	7 7/8		
Type Fluid in Hole	CHEMICAL MUD	CHLORIDES 3400	
Density / Viscosity	9.0/59		
PH / Fluid Loss	9.5/8.0		
Source of Sample	FLOWLINE		
Rm @ Meas. Temp	1.5@62F		
Rmt @ Meas. Temp	1.1@62F		
Rmc @ Meas. Temp	1.8@62F		
Source of Rmf / Rmc	MEASUREMENT		
Rm @ BHT	.73@127F		
Time Circulation Stopped	2 HOURS		
Time Logger on Bottom	////		
Maximum Recorded Temperature	127F		
Equipment Number	3802		
Location	HAYS, KANSAS		
Recorded By	JASON CAPPELLUCCI	TJ DREILING	
Witnessed By	DAVE GOLDAK		

<<< Fold Here >>>

All interpretations are opinions based on inferences from electrical or other measurements and we cannot and do not guarantee the accuracy or correctness of any interpretation, and we shall not, except in the case of gross or willful negligence on our part, be liable or responsible for any loss, costs, damages, or expenses incurred or sustained by anyone resulting from any interpretation made by any of our officers, agents or employees. These interpretations are also subject to our general terms and conditions set out in our current Price Schedule.

Comments

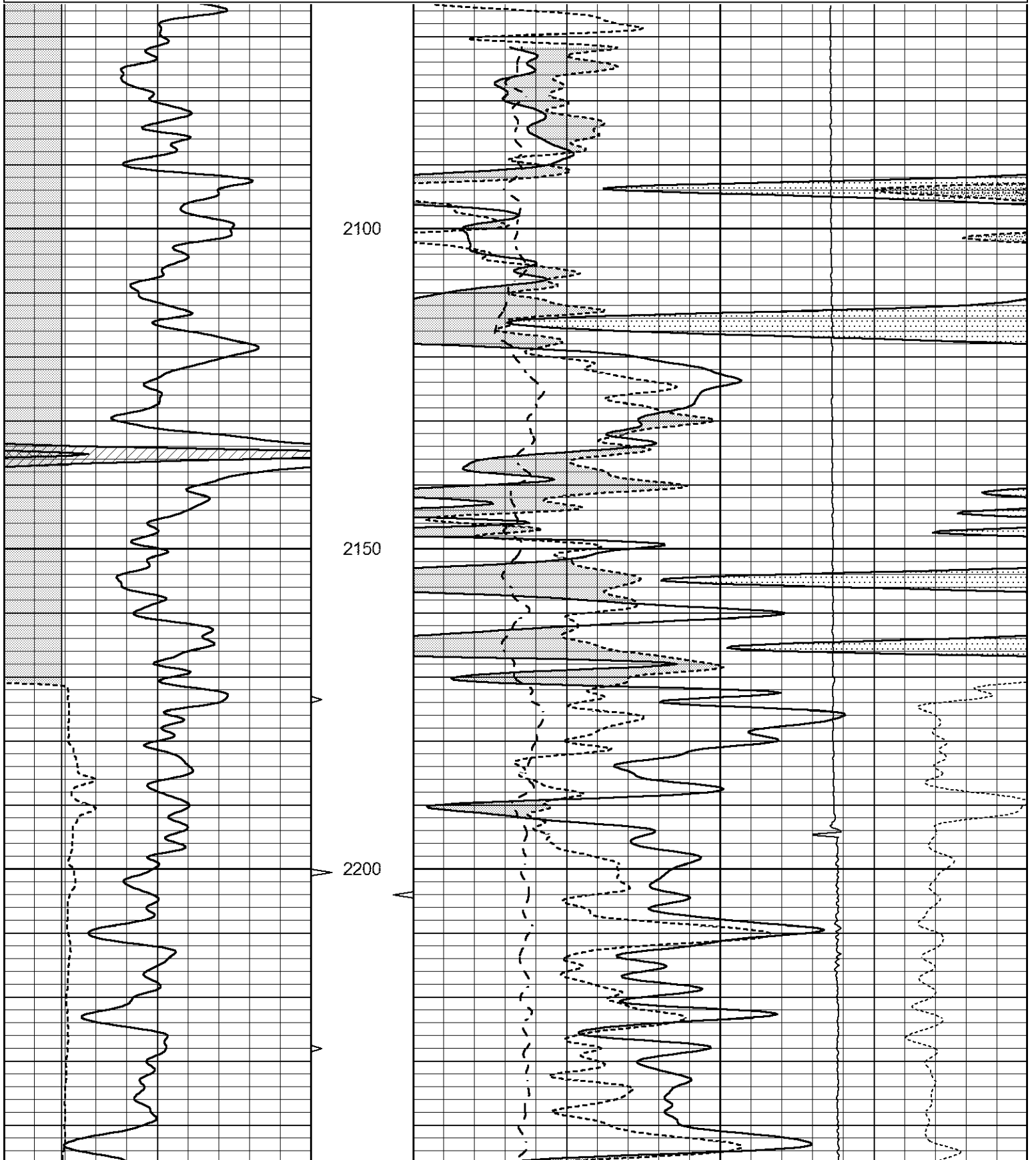
THANK YOU FOR USING ELI WIRELINE SERVICES, HAYS, KS. (785) 628-6395
 DIRECTIONS
 -SHARON SPRINGS KS SOUTH ON HIGHWAY 27 TO JACKRABBIT ROAD,
 -WEST 7 MILES, -NORTH 2 MILES

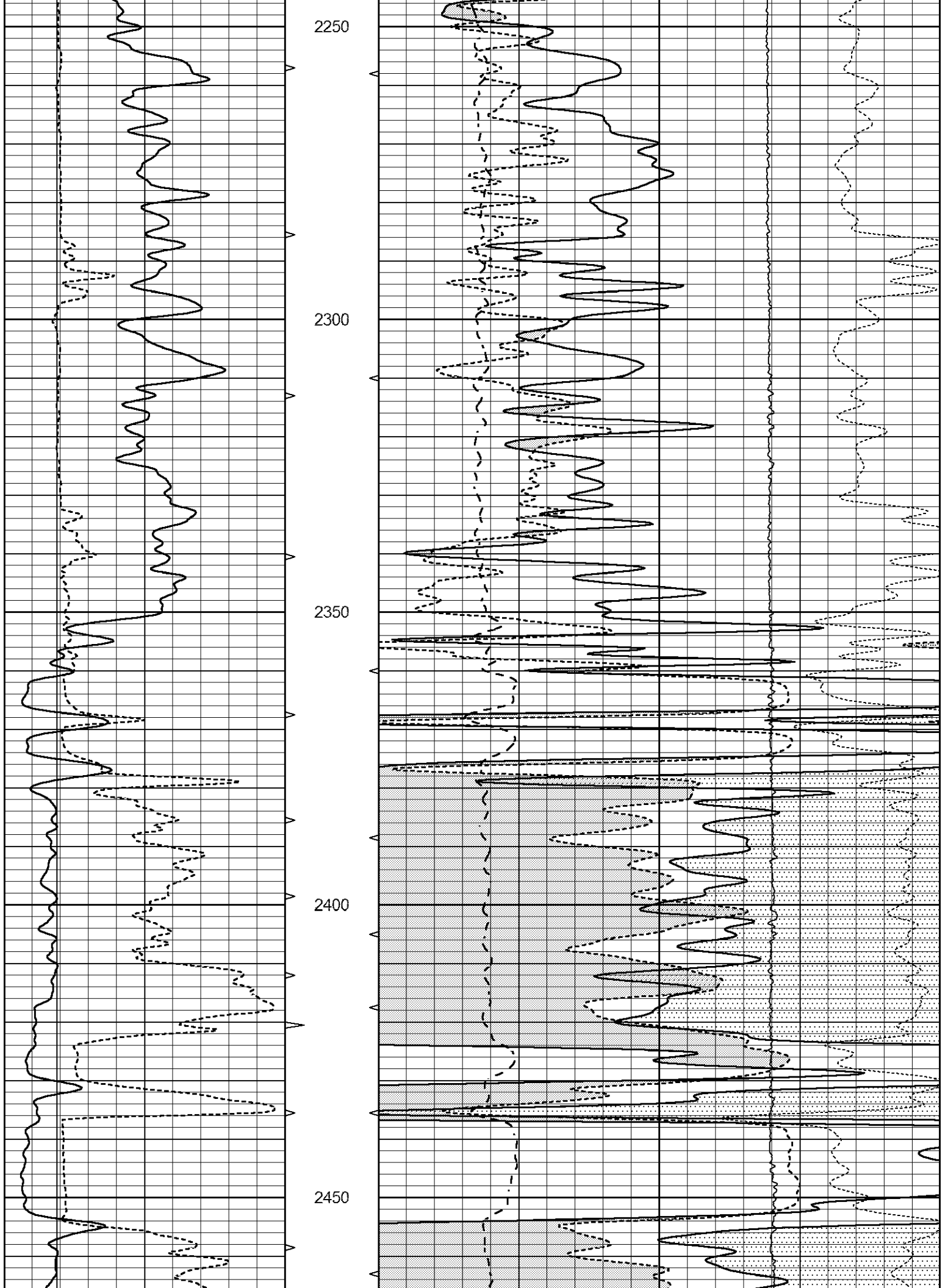


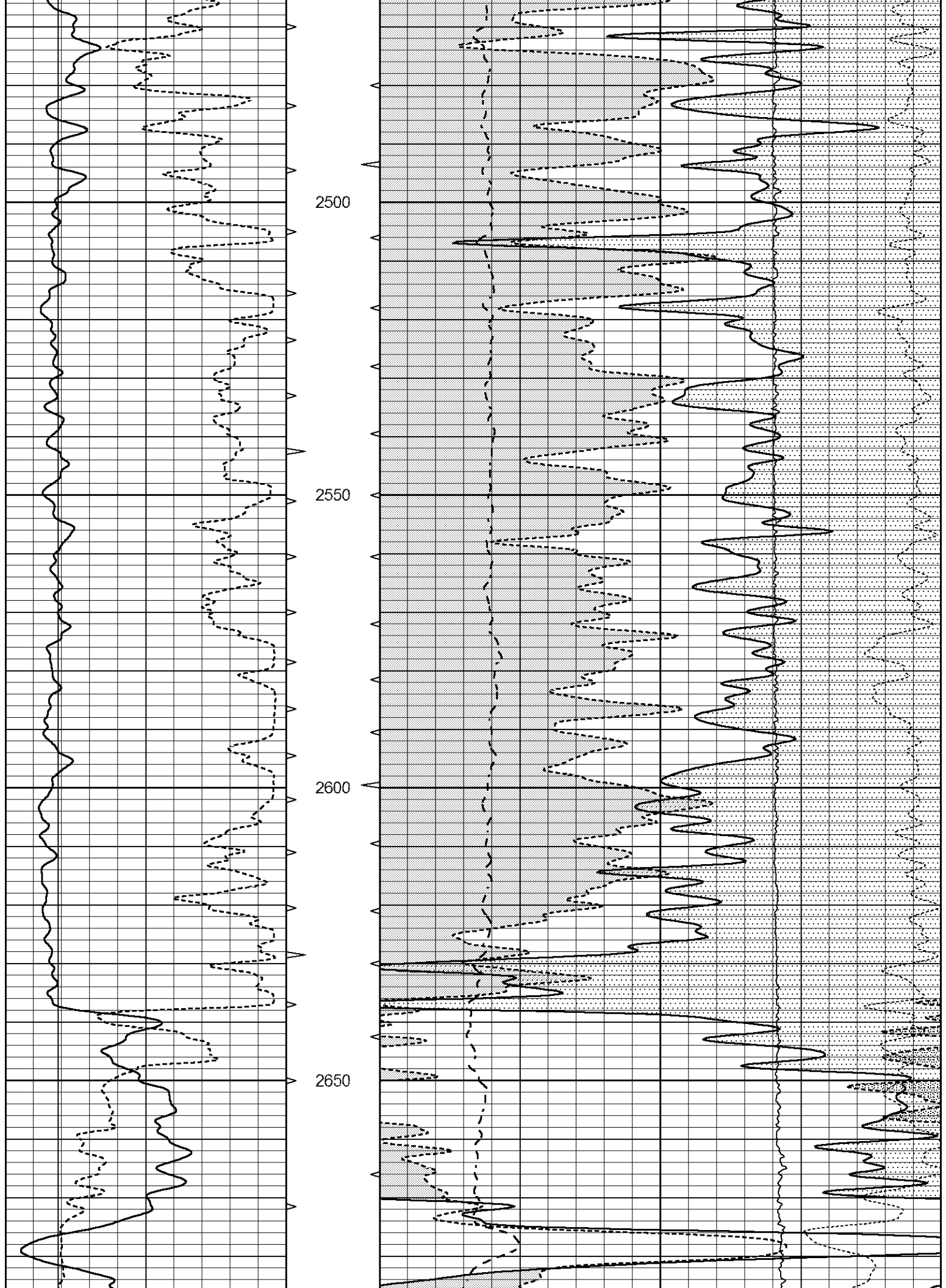
MAIN SECTION

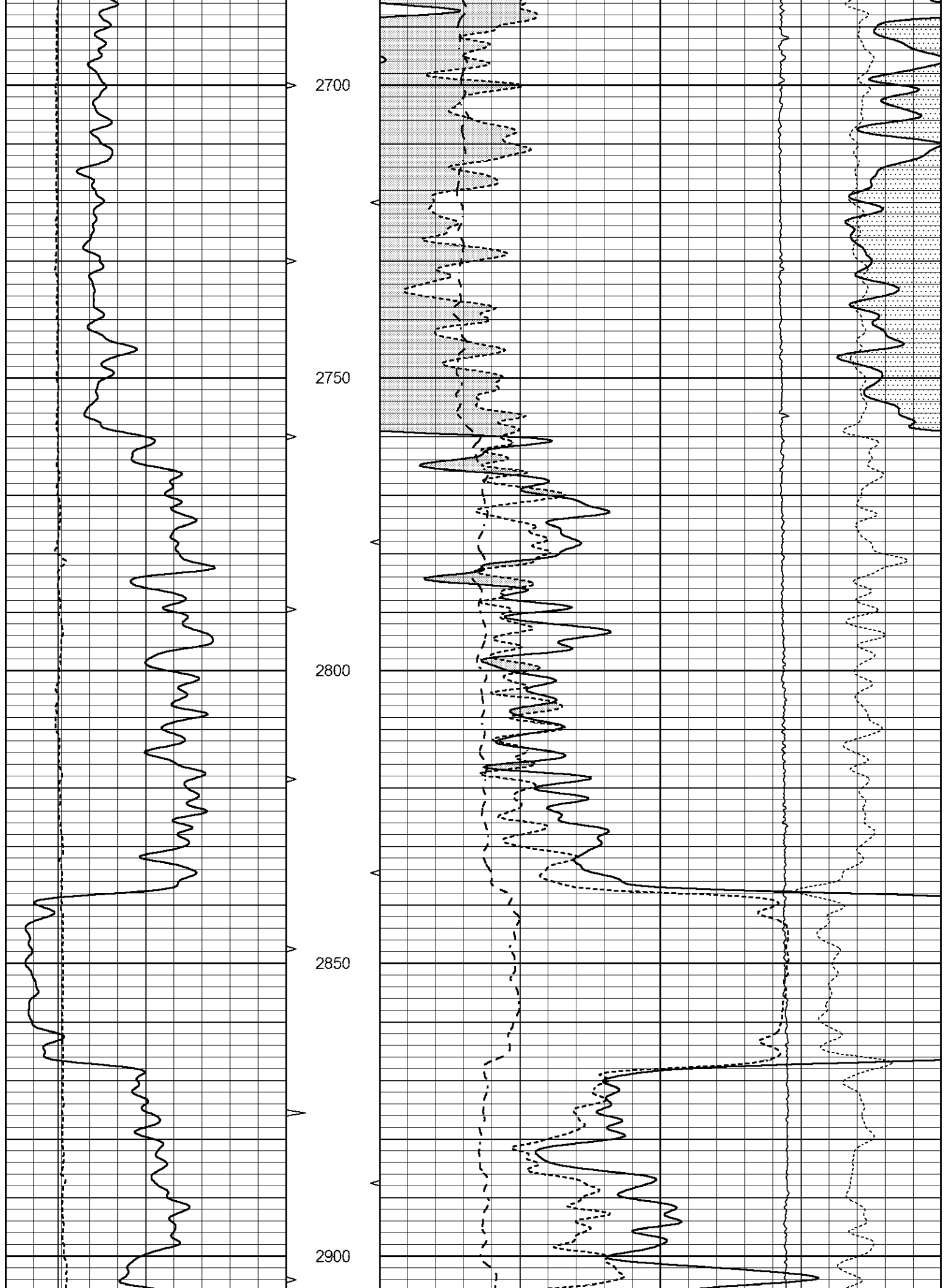
Database File 6236pe.db
 Dataset Pathname pass3.2
 Presentation Format _ldt_neu
 Dataset Creation Fri Feb 11 02:23:00 2022
 Charted by Depth in Feet scaled 1:240

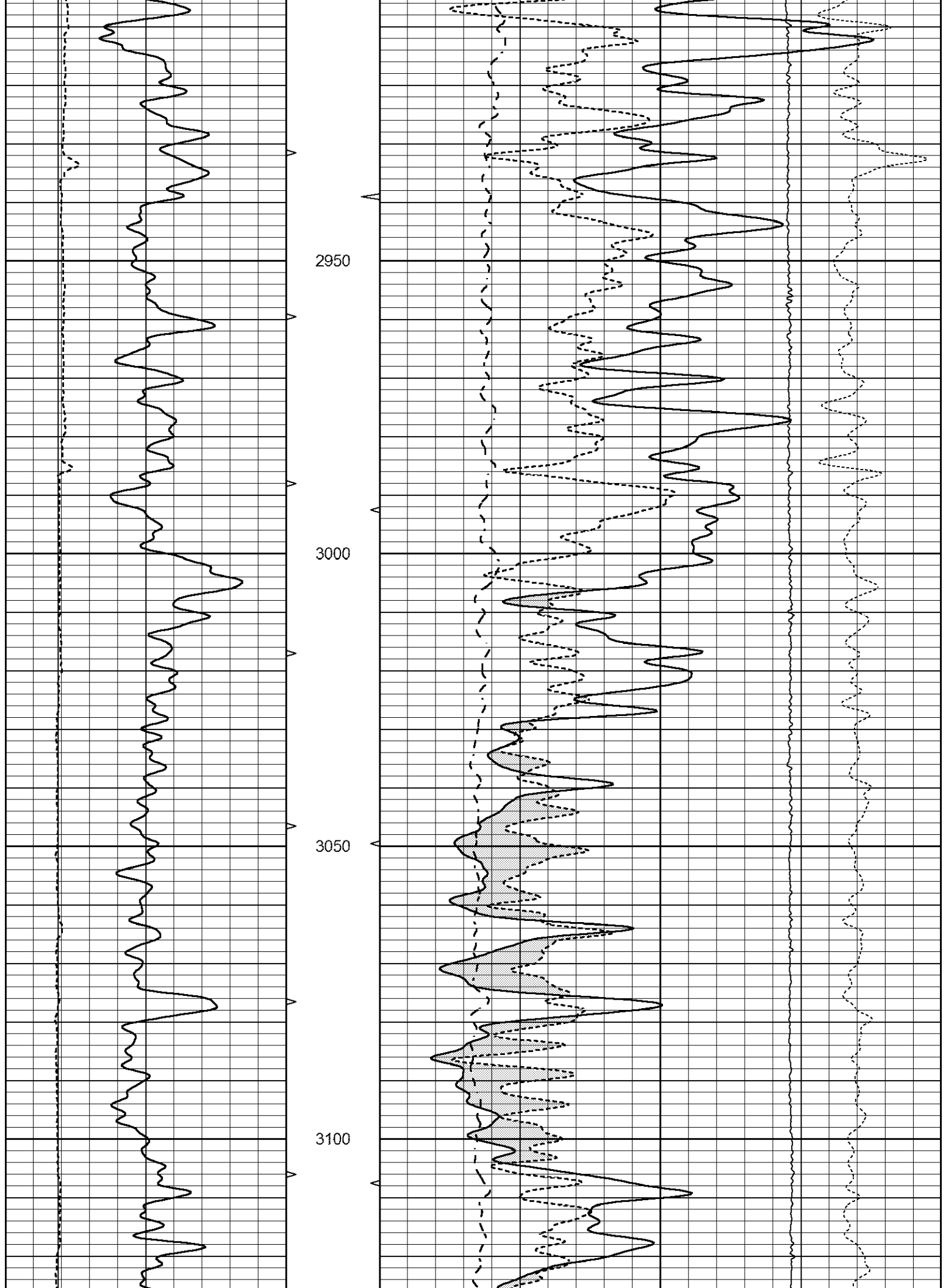
0	GAMMA RAY (GAPI)	150	ABHV	30	COMPENSATED DENSITY (pu)	-10
6	CALIPER (in)	16	10 (ft3)	0	COMPENSATED NEUTRON (pu)	-10
			TBHV	0	PE	10
			0 (ft3)	10	-0.25	CORRECTION (g/cc)
					0	LTEN (lb)
						5000

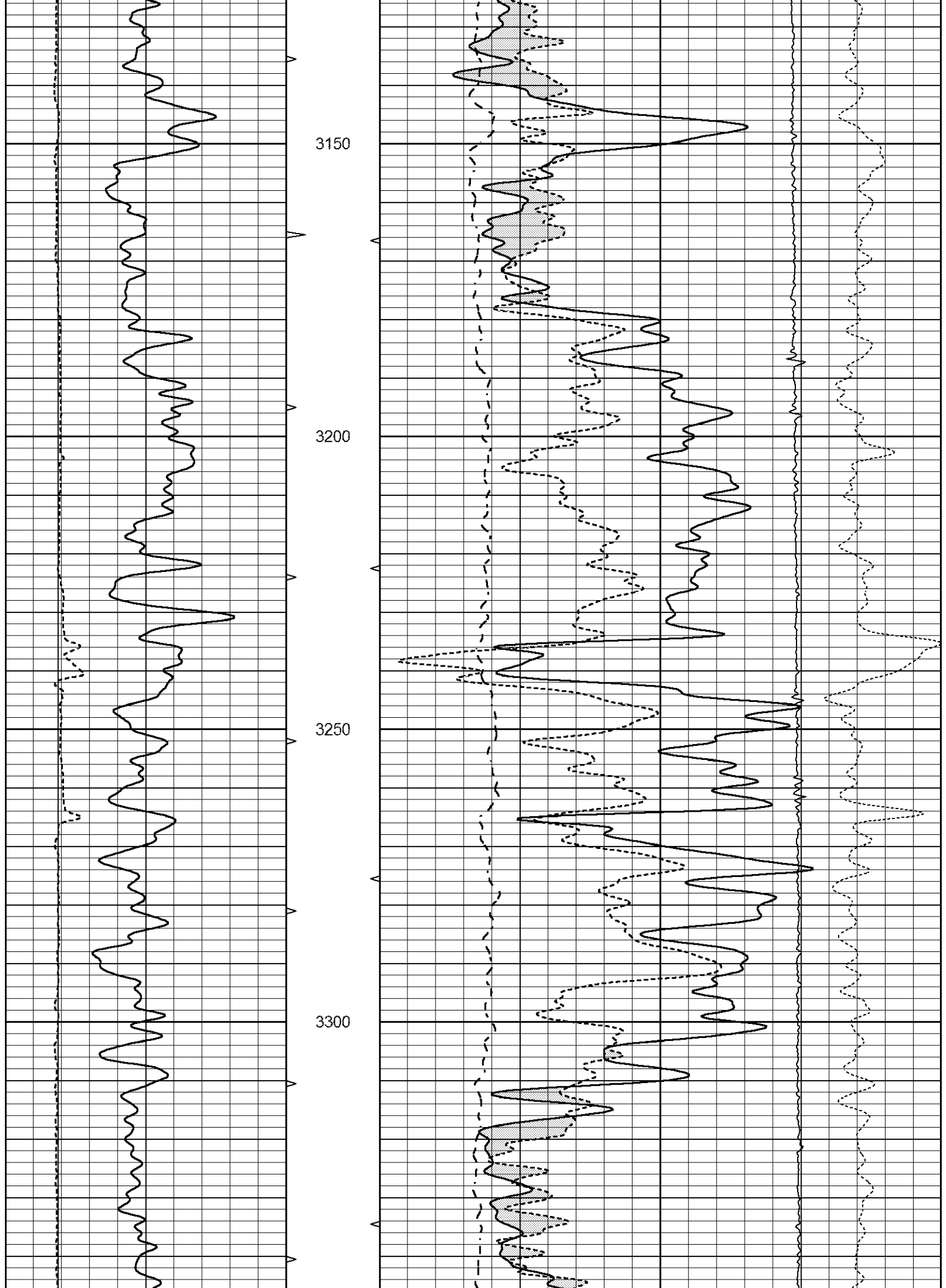


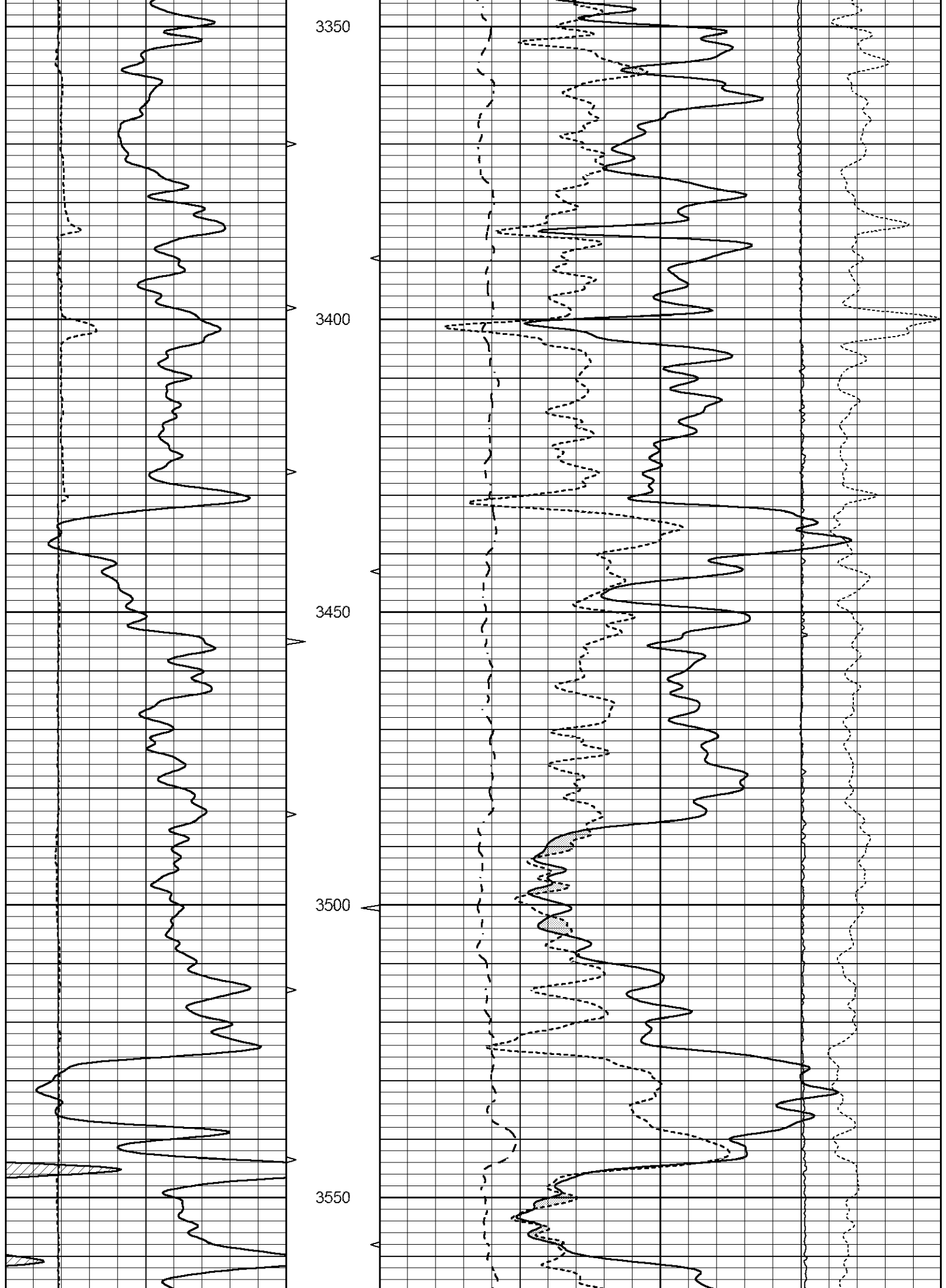


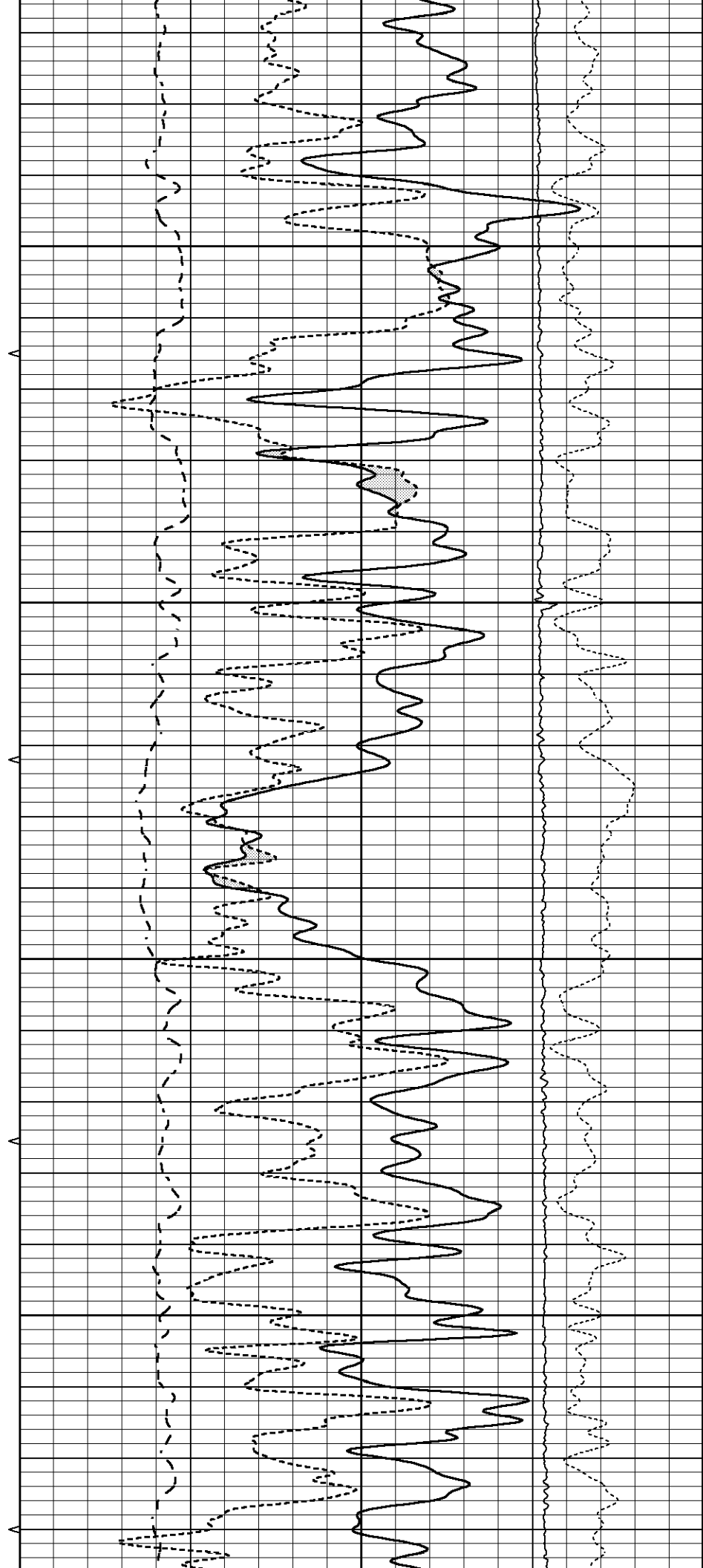
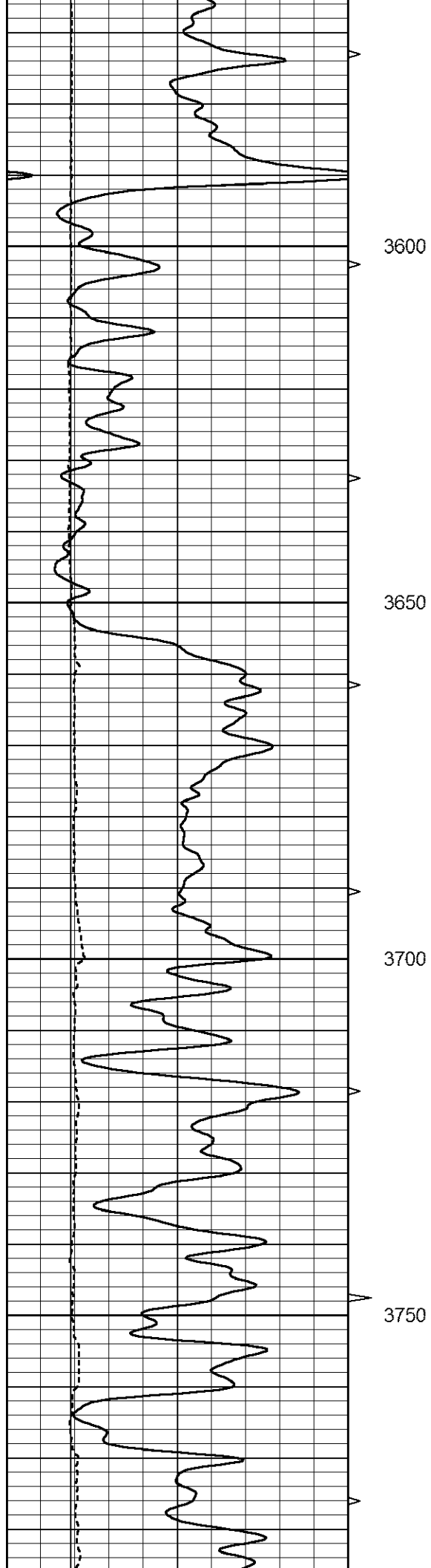


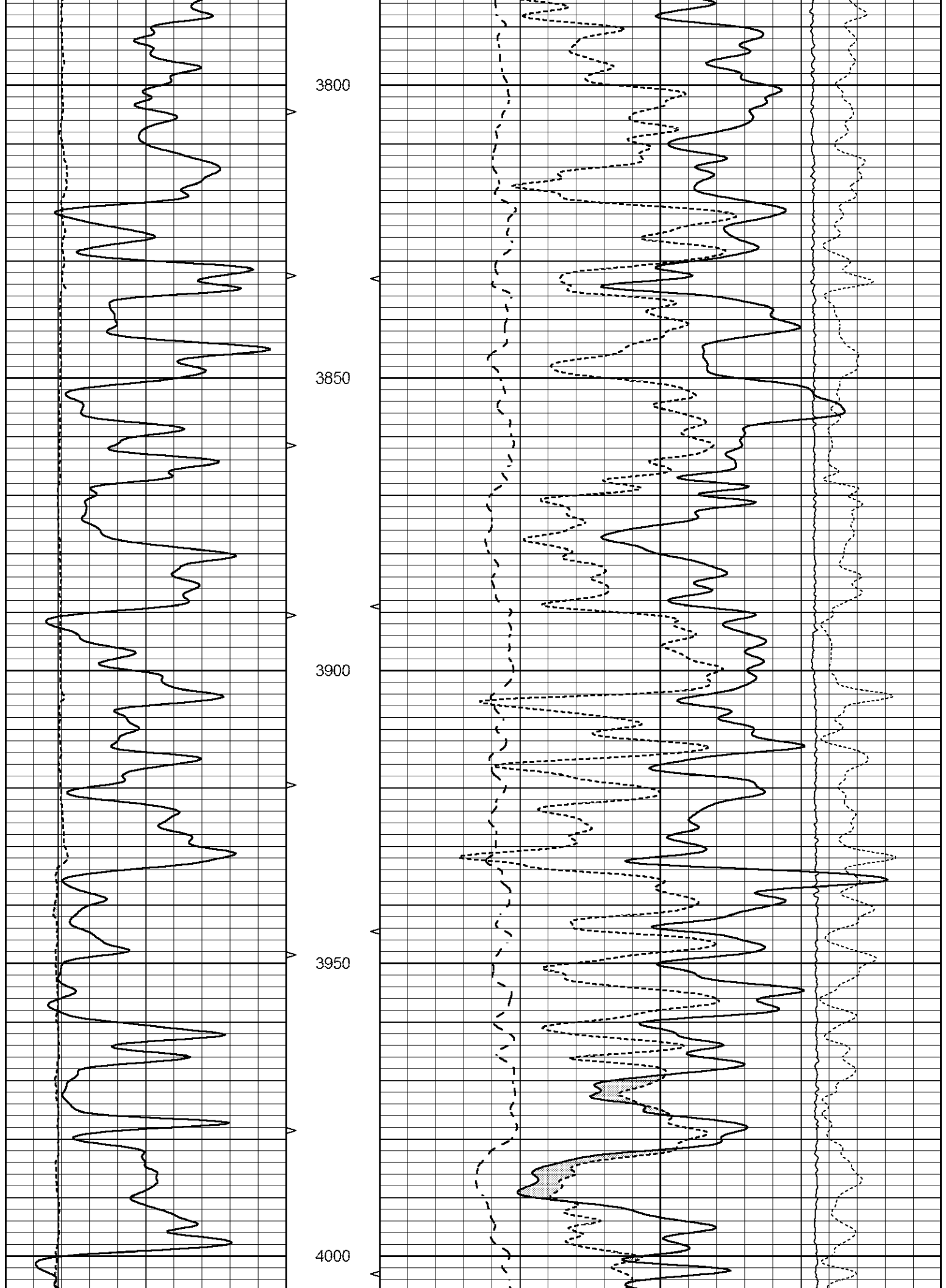


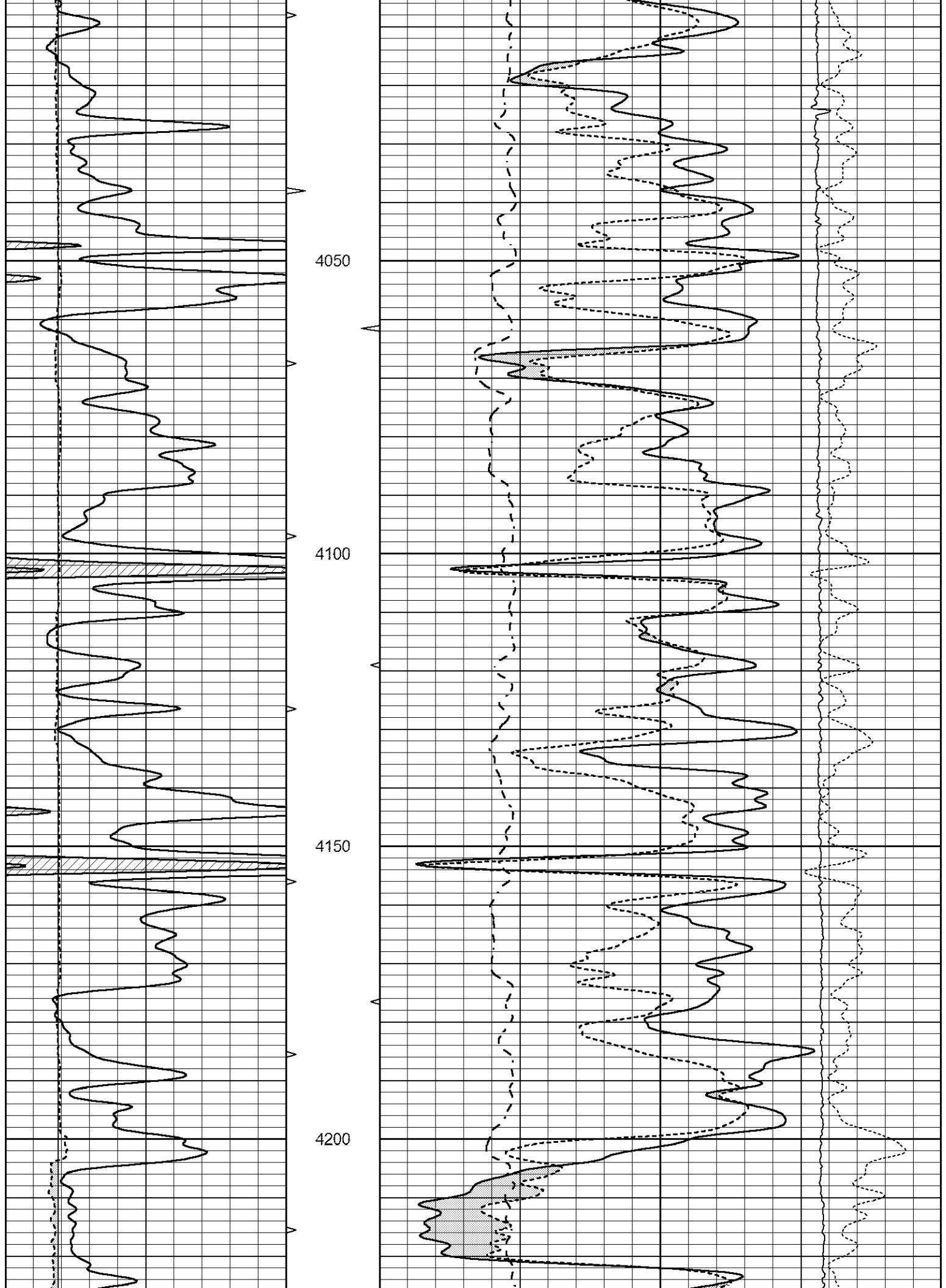


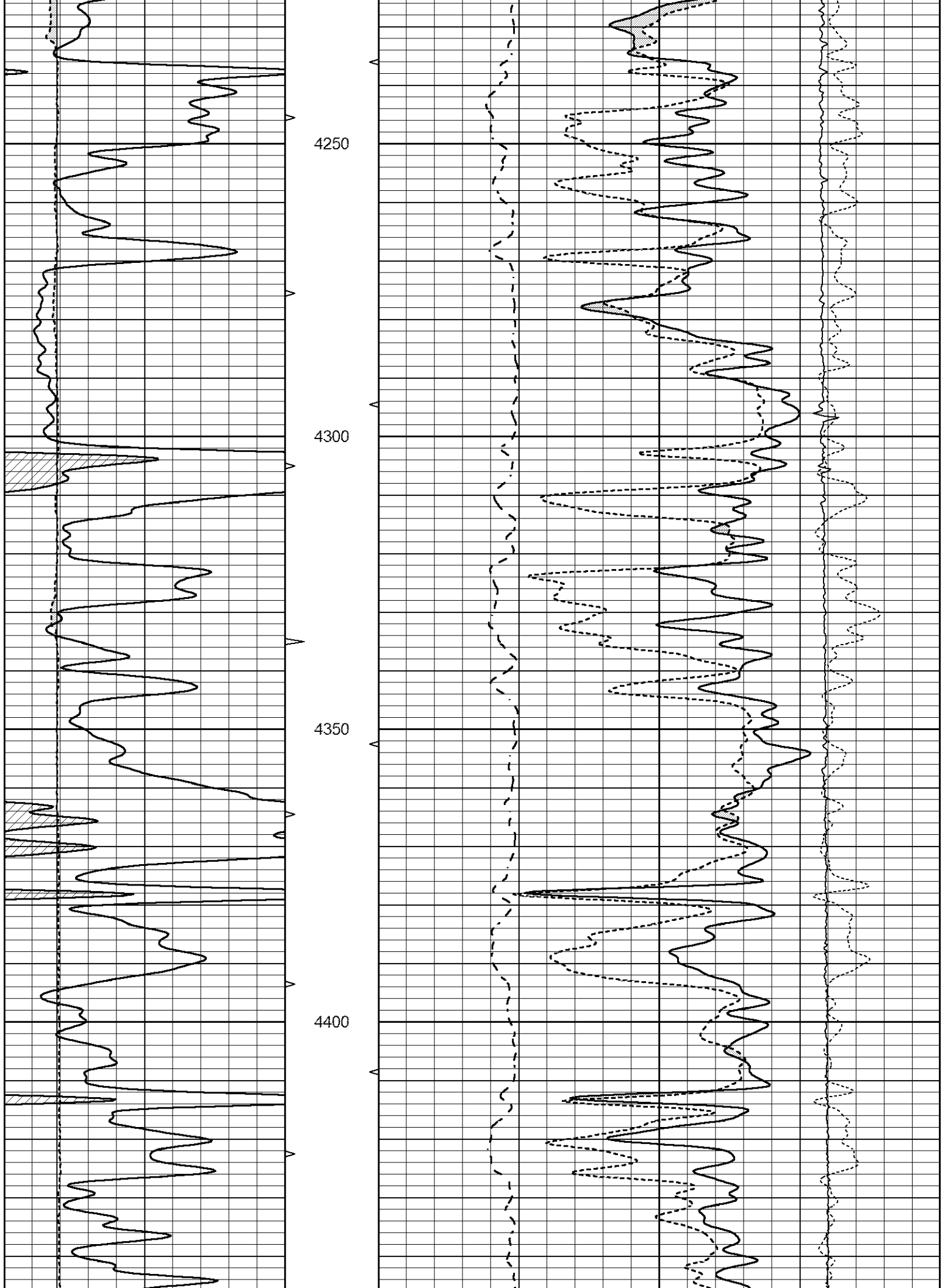


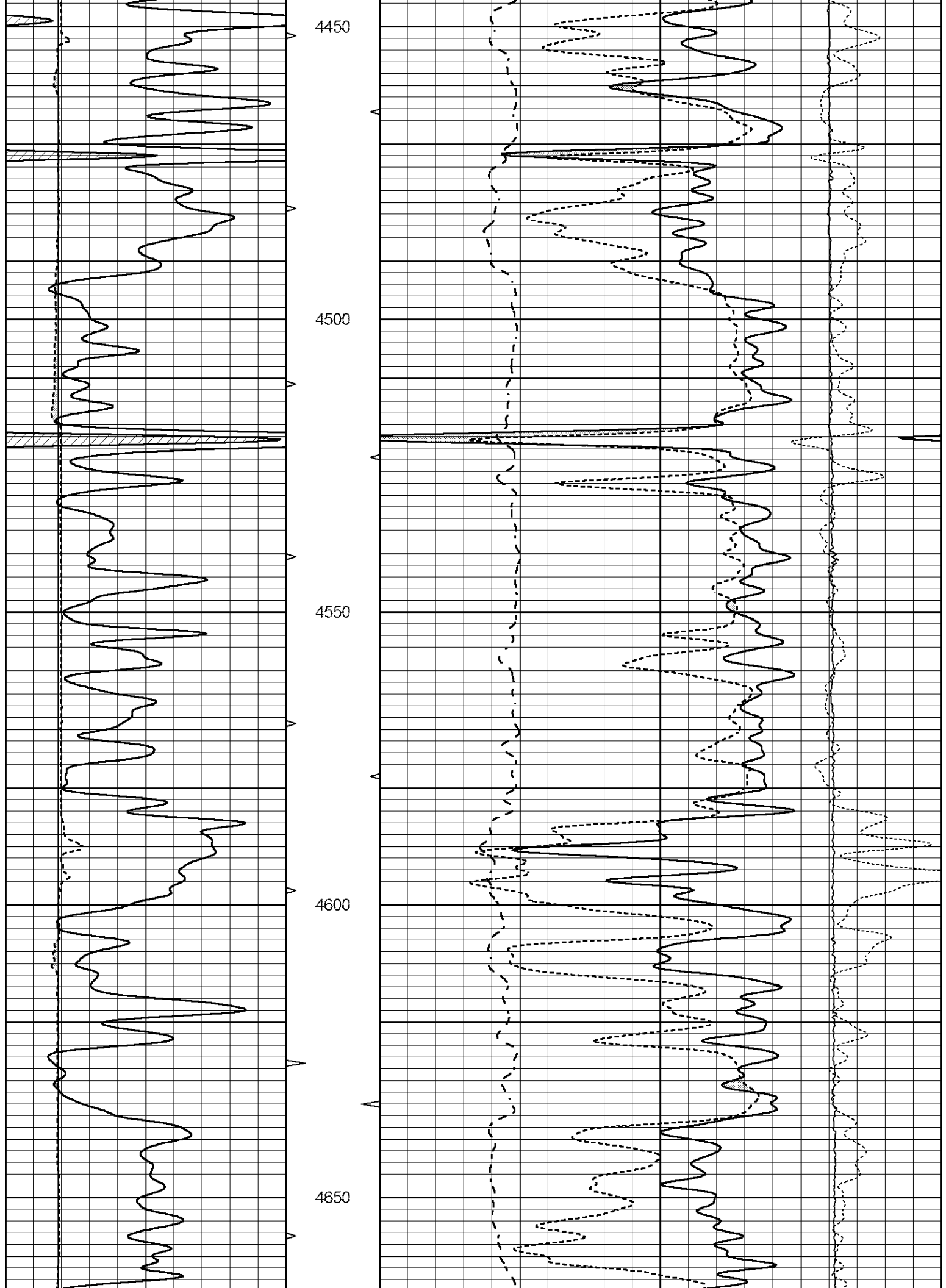


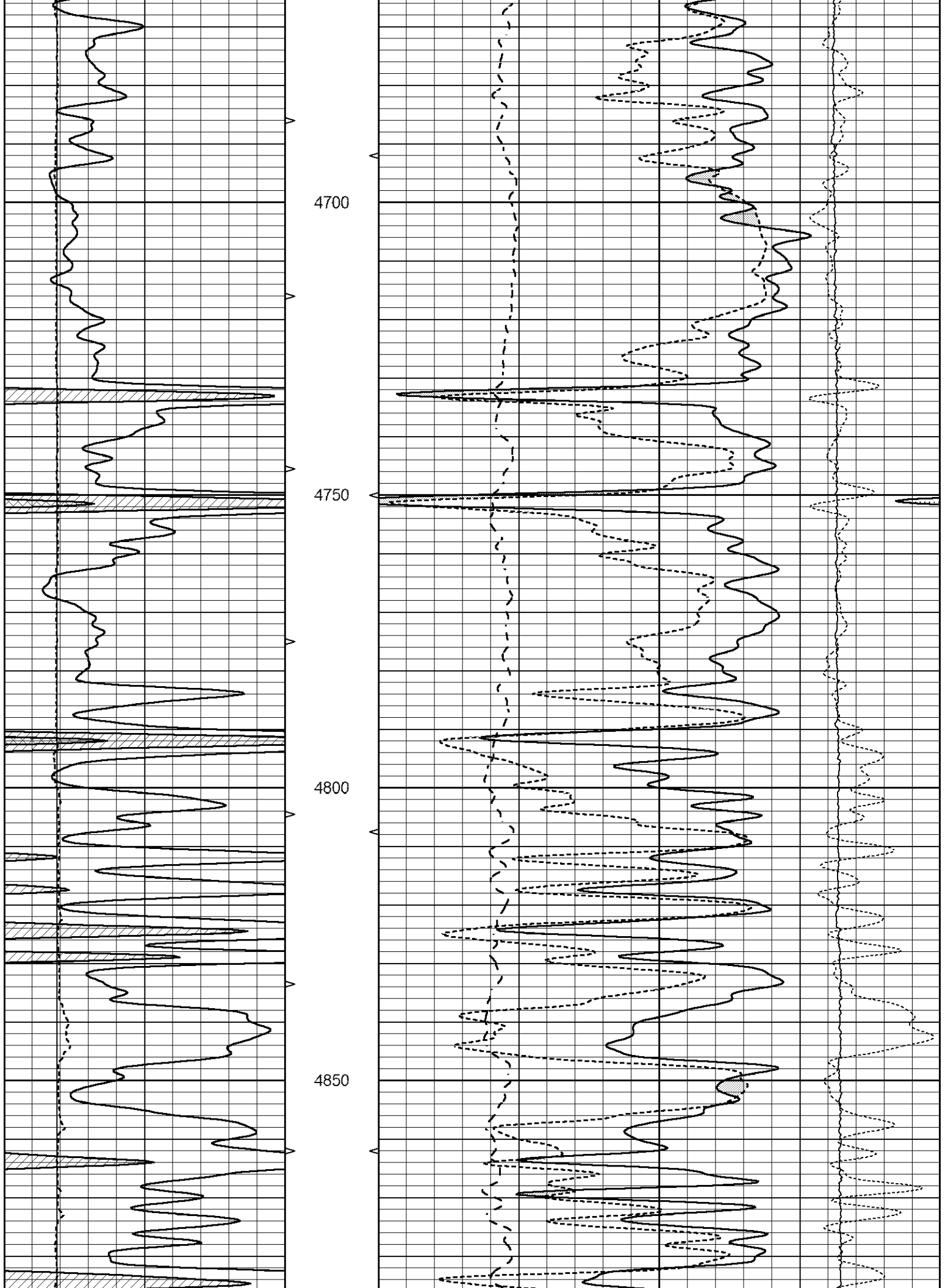


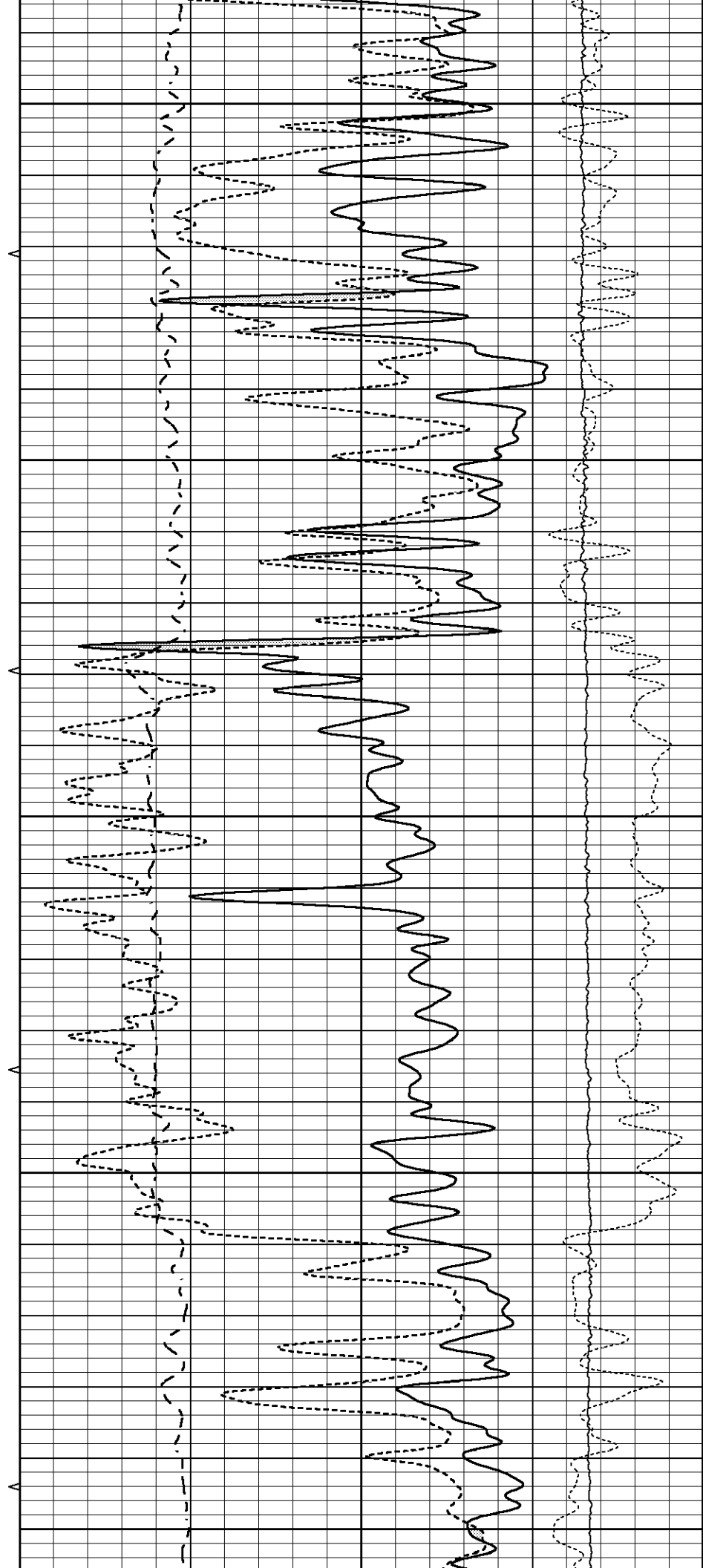
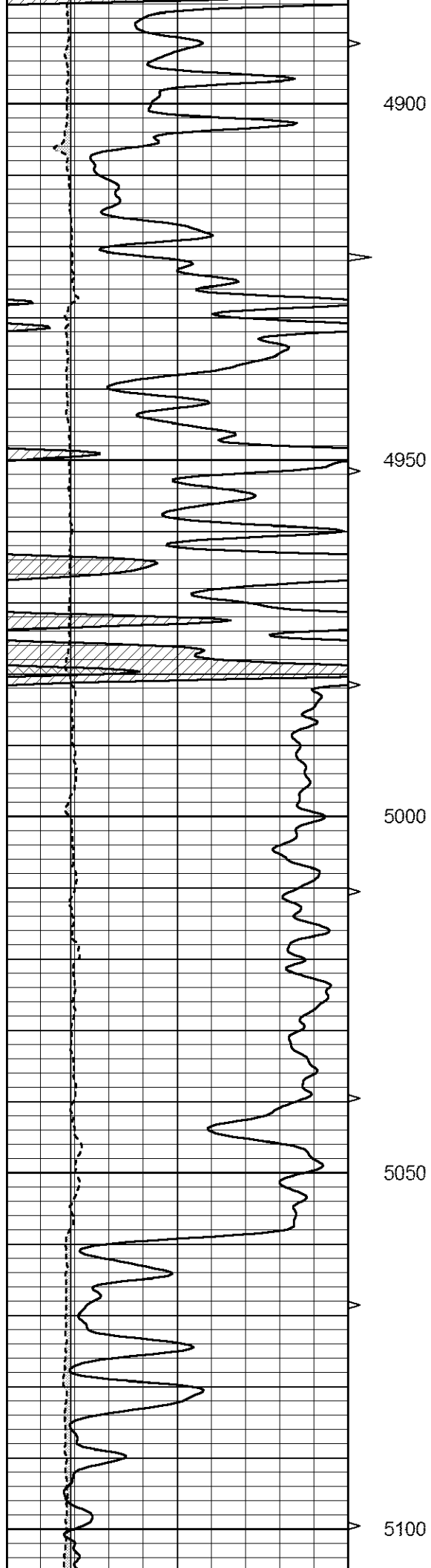


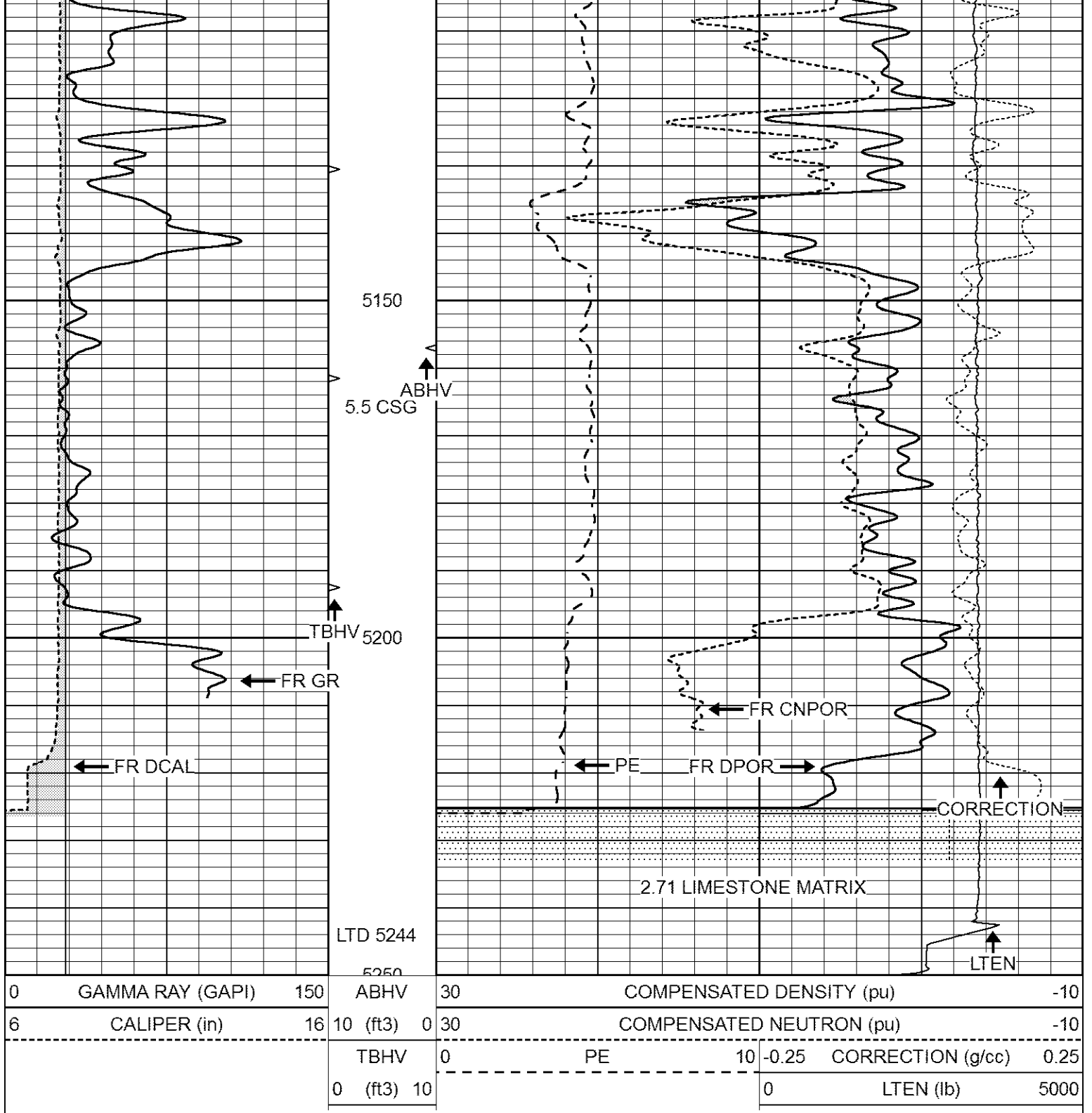












REPEAT SECTION

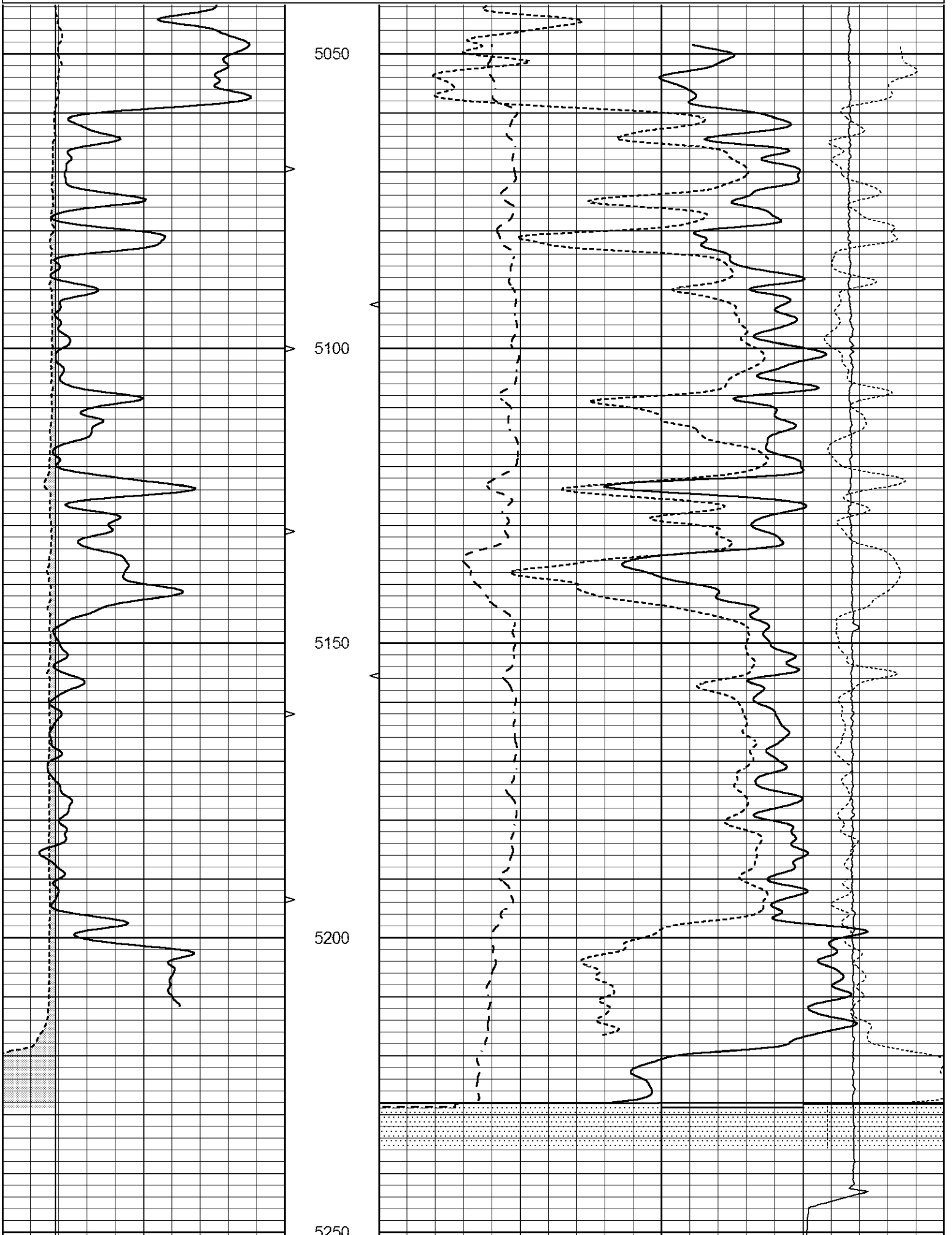
Database File 6236pe.db
 Dataset Pathname pass2.1
 Presentation Format _ldt_neu
 Dataset Creation Fri Feb 11 02:17:54 2022
 Charted by Depth in Feet scaled 1:240

0	GAMMA RAY (GAPI)	150	ABHV	30	COMPENSATED DENSITY (pu)	-10
6	CALIPER (in)	16	10 (ft3)	0 30	COMPENSATED NEUTRON (pu)	-10

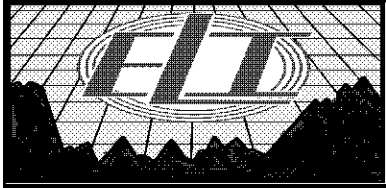
TBHV
0 (ft3) 10

0 PE 10

-0.25 CORRECTION (g/cc) 0.25
0 LTEN (lb) 5000



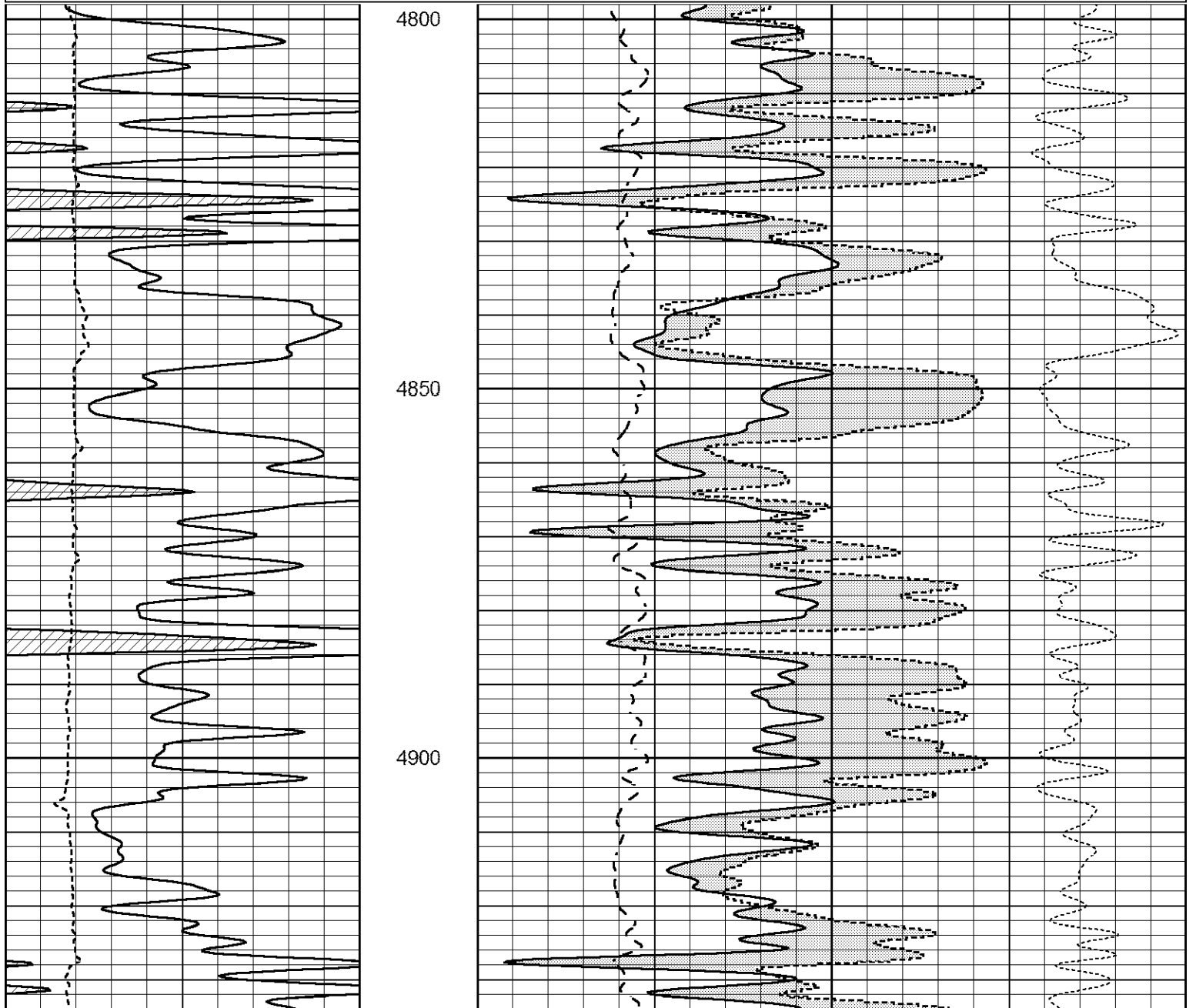
0	GAMMA RAY (GAPI)	150	ABHV	30	COMPENSATED DENSITY (pu)	-10
6	CALIPER (in)	16	10 (ft3) 0	30	COMPENSATED NEUTRON (pu)	-10
			0	PE	10	-0.25 CORRECTION (g/cc) 0.25
			0 (ft3) 10			0 LTEN (lb) 5000

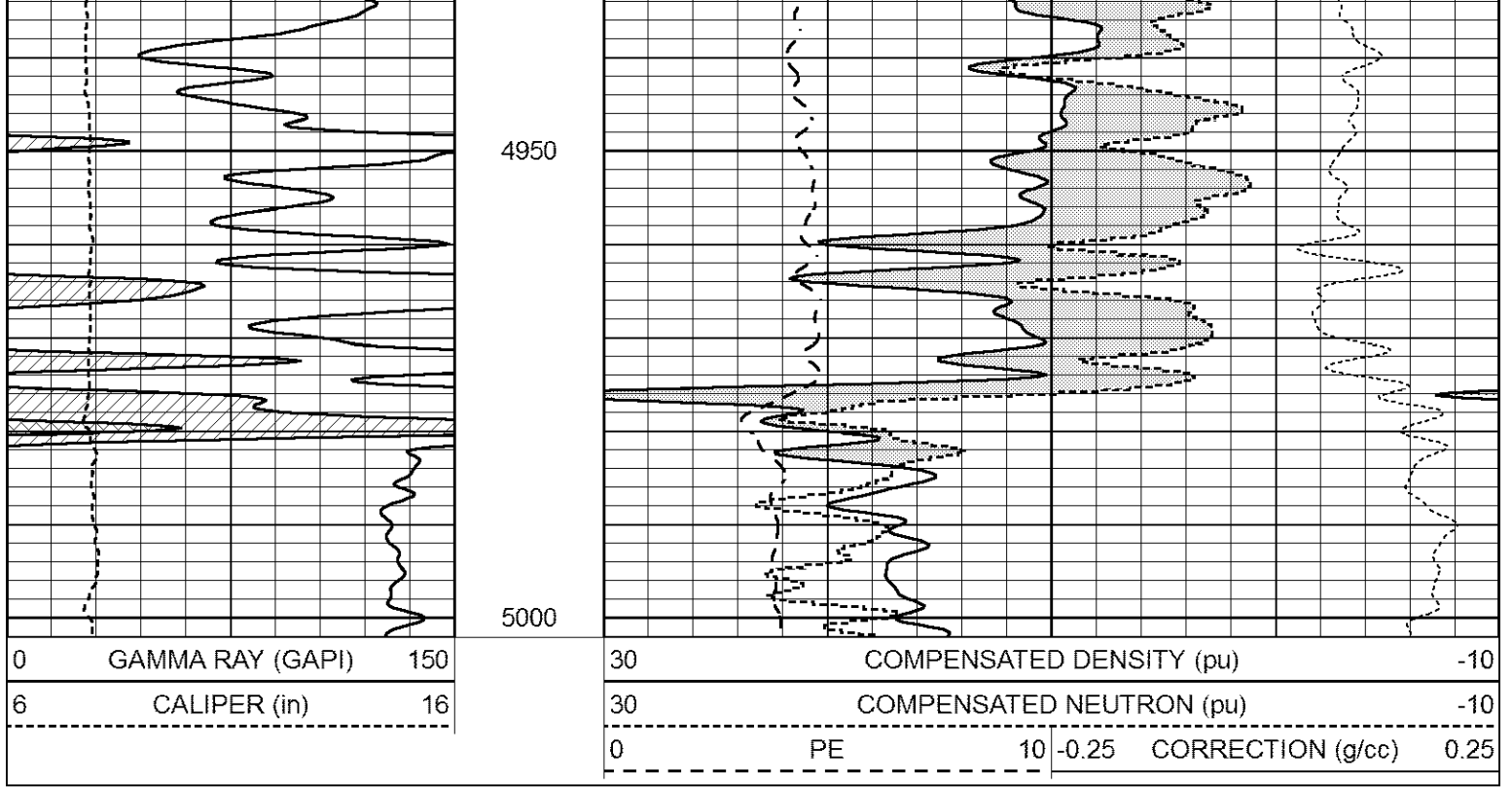


2.87 DOLOMITE MATRIX

Database File 6236pe.db
 Dataset Pathname pass3.10D
 Presentation Format _ldt_neu
 Dataset Creation Fri Feb 11 01:12:54 2022
 Charted by Depth in Feet scaled 1:240

0	GAMMA RAY (GAPI)	150	30	COMPENSATED DENSITY (pu)	-10	
6	CALIPER (in)	16	30	COMPENSATED NEUTRON (pu)	-10	
			0	PE	10	-0.25 CORRECTION (g/cc) 0.25





Calibration Report

Database File 6236pe.db
 Dataset Pathname pass3.1
 Dataset Creation Fri Feb 11 02:21:49 2022

Dual Induction Calibration Report

Serial-Model: FW1410-55-Probe
 Surface Cal Performed: Sat Jan 29 11:57:42 2022
 Downhole Cal Performed: Tue Feb 19 11:44:24 2019
 After Survey Verification Performed: Tue Feb 19 11:44:27 2019

Surface Calibration

Loop:	Readings			References			Results	
	Air	Loop	V	Air	Loop	mmho/m	m	b
Deep	0.011	0.656	V	1.000	400.000	mmho/m	618.595	-5.524
Medium	-0.000	0.731	V	1.000	464.000	mmho/m	632.856	1.197
Internal:	Zero	Cal		Zero	Cal		m	b
Deep	0.007	0.649	V	0.000	400.000	mmho/m	623.784	-4.595
Medium	0.004	0.743	V	0.000	464.000	mmho/m	627.284	-2.251

Downhole Calibration

	Readings			References			Results	
	Zero	Cal	mmho/m	Zero	Cal	mmho/m	m'	b'
Deep	-0.824	395.917	mmho/m	-0.976	397.550	mmho/m	1.004	-0.149
Medium	3.565	471.327	mmho/m	3.468	471.590	mmho/m	1.001	-0.099
LL3		7.503	V		1500.000	Ohm-m		
		0.001	V		20.000	Ohm-m		
		-7.481	V		3745.000	mmho-m		

After Survey Verification

	Readings			Targets		Results	
	Zero	Cal	mmho/m	Zero	Cal	m'	b'

Deep	0.000	0.000	mmho/m	-0.824	395.917	mmho/m	1.000	0.000
Medium	0.000	0.000	mmho/m	3.565	471.327	mmho/m	1.000	0.000
LL3		0.000	Ohm-m		1500.000	Ohm-m		
		0.000	Ohm-m		20.000	Ohm-m		
		0.000	mmho-m		3745.000	mmho-m		

Litho Density Calibration Report
 Serial: 140703
 Model: V4_10P
 Source Number: 74GBq-19

Master Calibration				Performed: Tue Jan 25 14:00:06 2022			
	<u>Background</u>	<u>Aluminum</u>	<u>Magnesium</u>				
Window 1	536.63	5366.27	23525.73				cps
Window 2	42.91	1241.07	5903.94				cps
Window 4	234.22	1197.63	5056.39				cps
Window 5	470.91	9159.65	17426.67				cps
Window 6	30.83	648.89	1219.18				cps
Window 8	256.26	4659.94	9003.51				cps
Bulk Density	-	2.6020	1.6830				g/cc
Pe	-	3.0000	2.5070				b/e
LS Alpha:	:-1.8361	SS Alpha:	:-0.7848	LS CPE:		: 1.0879	
LS Beta:	: 117533.3616	SS Beta:	: 35294.5337	SS CPE:		: 5.9752	

Before Survey Background Counts Verification				Performed: Wed Dec 31 18:00:00 1969			
Window 1	0.00		cps				
Window 2	0.00		cps				
Window 4	0.00		cps				
Window 5	0.00		cps				
Window 6	0.00		cps				
Window 8	0.00		cps				

After Survey Background Counts Verification				Performed: Wed Dec 31 18:00:00 1969			
Window 1	0.00		cps				
Window 2	0.00		cps				
Window 4	0.00		cps				
Window 5	0.00		cps				
Window 6	0.00		cps				
Window 8	0.00		cps				

Lithodensity Caliper Calibration				Performed: Tue Jan 25 14:00:06 2022			
Results	Readings		References (in)				
	<u>Low</u>	<u>High</u>	<u>Low</u>	<u>High</u>	<u>Gain</u>	<u>Offset</u>	
	10332.0	13596.9	8.0	14.0	0.0	-11.0	

Before Survey Caliper Verification				Performed:			
	<u>Reference</u>	<u>Reading</u>					
Caliper (in)	_____	_____					

After Survey Caliper Verification				Performed:			
-----------------------------------	--	--	--	------------	--	--	--

Reference	Reading		
Caliper (in)			
Compensated Neutron Calibration Report			
	Serial Number:	080621PMC	
	Tool Model:	NABORS	
PRE-SURVEY VERIFICATION			
Detector	Readings	Measured	Target
Short Space	cps		
Long Space	cps	pu	pu
POST-SURVEY VERIFICATION			
Detector	Readings	Measured	Target
Short Space	cps		
Long Space	cps	pu	pu
Gamma Ray Calibration Report			
Serial Number:	7		
Tool Model:	Probe1		
Performed:	Tue Jan 19 17:50:08 2021		
Calibrator Value:	1.0	GAPI	
Background Reading:	0.0	cps	
Calibrator Reading:	1.0	cps	
Sensitivity:	0.5300	GAPI/cps	