



DUAL INDUCTION LOG

Company STELBAR OIL CORPORATION, INC.
 Well BPC TRUST #1-10
 Field UNNAMED
 County WALLACE State KANSAS

Company STELBAR OIL CORPORATION, INC.
 Well BPC TRUST #1-10
 Field UNNAMED
 County WALLACE
 State KANSAS

Location: API #: 15-199-20456-0000
 548' FSL & 343' FWL
 SEC 10 TWP 14 RGE 41
 Permanent Datum GROUND LEVEL Elevation 3761
 Log Measured From KELLY BUSHING 8' A.G.L.
 Drilling Measured From KELLY BUSHING
 Other Services CNL/CDL/PE MEL/SON
 Elevation K.B. 3769
 D.F. 3767
 G.L. 3761

Date	2/10/22		
Run Number	ONE		
Depth Driller	5249		
Depth Logger	5244		
Bottom Logged Interval	5242		
Top Log Interval	0		
Casing Driller	8 5/8" @ 556		
Casing Logger	556		
Bit Size	7 7/8		
Type Fluid in Hole	CHEMICAL MUD	CHLORIDES 3400	
Density / Viscosity	9.0/59		
pH / Fluid Loss	9.5/8.0		
Source of Sample	FLOWLINE		
Rm @ Meas. Temp	1.5@62F		
Rmt @ Meas. Temp	1.1@62F		
Rmc @ Meas. Temp	1.8@62F		
Source of Rmf / Rmc	MEASUREMENT		
Rm @ BHT	.73@127F		
Time Circulation Stopped	2 HOURS		
Time Logger on Bottom	////		
Maximum Recorded Temperature	127F		
Equipment Number	3802		
Location	HAYS, KANSAS		
Recorded By	JASON CAPPELLUCCI	TJ DREILING	
Witnessed By	DAVE GOLDAK		

<<< Fold Here >>>

All interpretations are opinions based on inferences from electrical or other measurements and we cannot and do not guarantee the accuracy or correctness of any interpretation, and we shall not, except in the case of gross or willful negligence on our part, be liable or responsible for any loss, costs, damages, or expenses incurred or sustained by anyone resulting from any interpretation made by any of our officers, agents or employees. These interpretations are also subject to our general terms and conditions set out in our current Price Schedule.

Comments

THANK YOU FOR USING ELI WIRELINE SERVICES, HAYS, KS. (785) 628-6395
 DIRECTIONS
 -SHARON SPRINGS KS SOUTH ON HIGHWAY 27 TO JACKRABBIT ROAD,
 -WEST 7 MILES, -NORTH 2 MILES

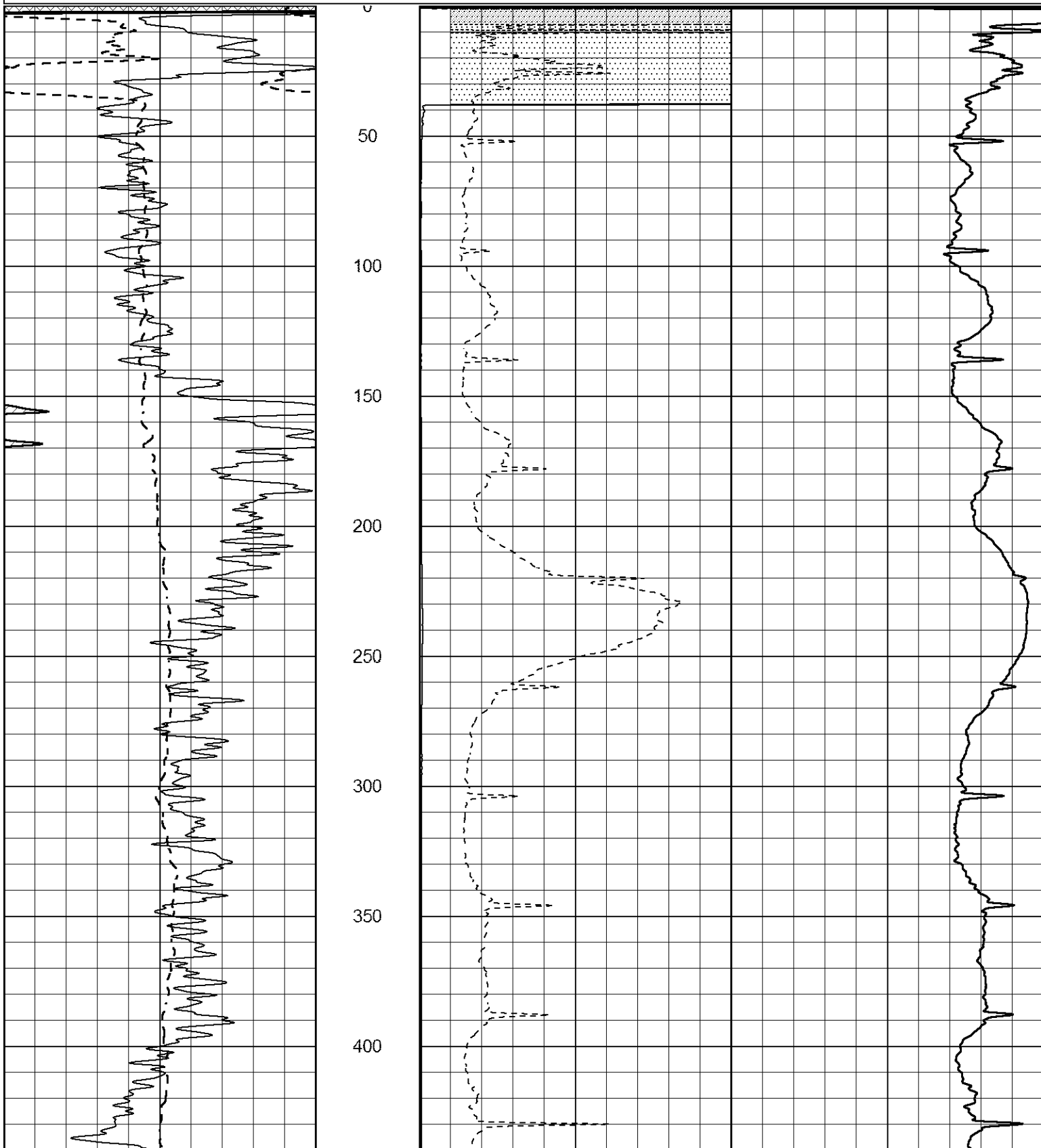


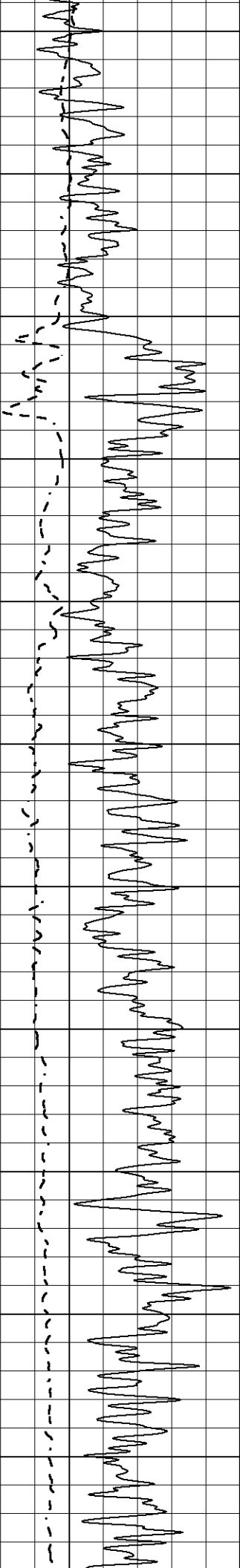
MAIN SECTION

Database File 6236pe.db
 Dataset Pathname pass3.3
 Presentation Format _dil2
 Dataset Creation Fri Feb 11 03:36:20 2022
 Charted by Depth in Feet scaled 1:600

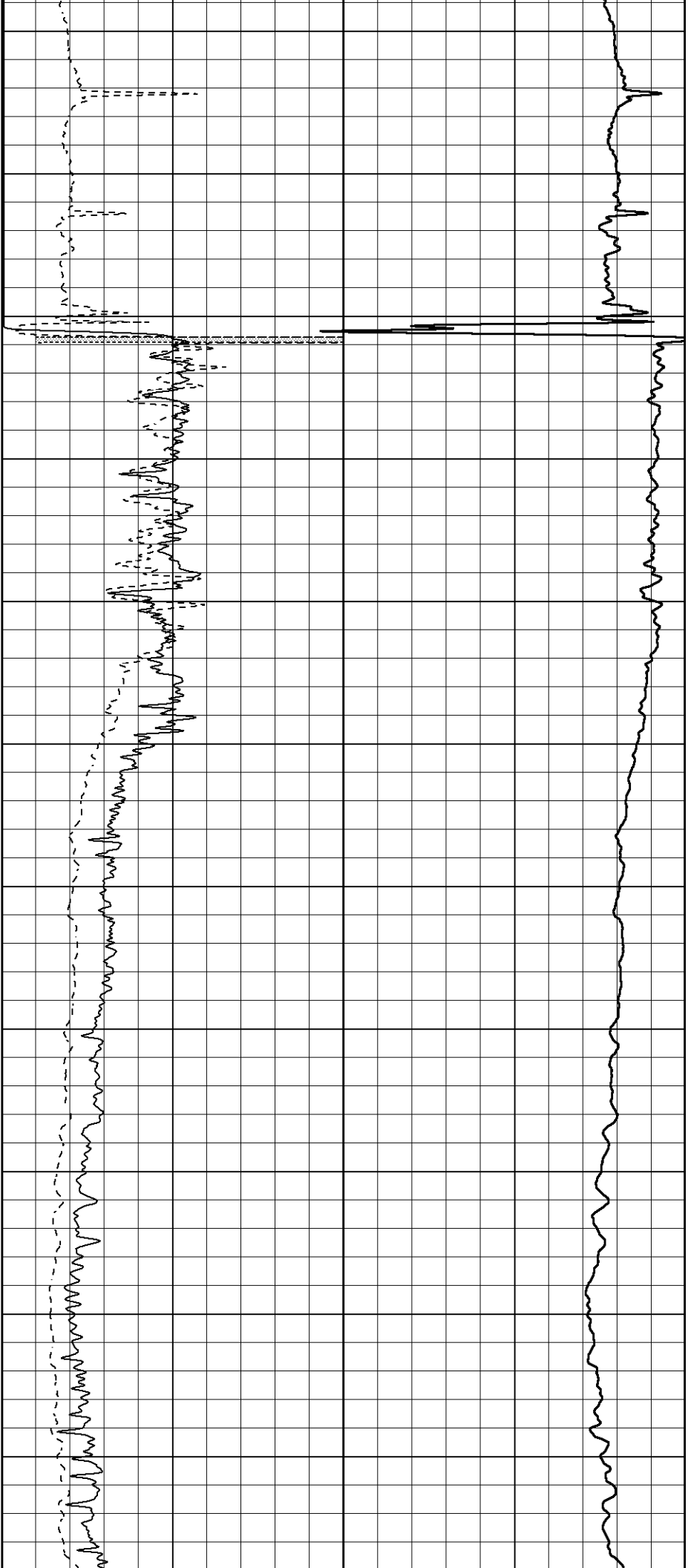
0	Gamma Ray (GAPI)	150
-100	SP (mV)	100

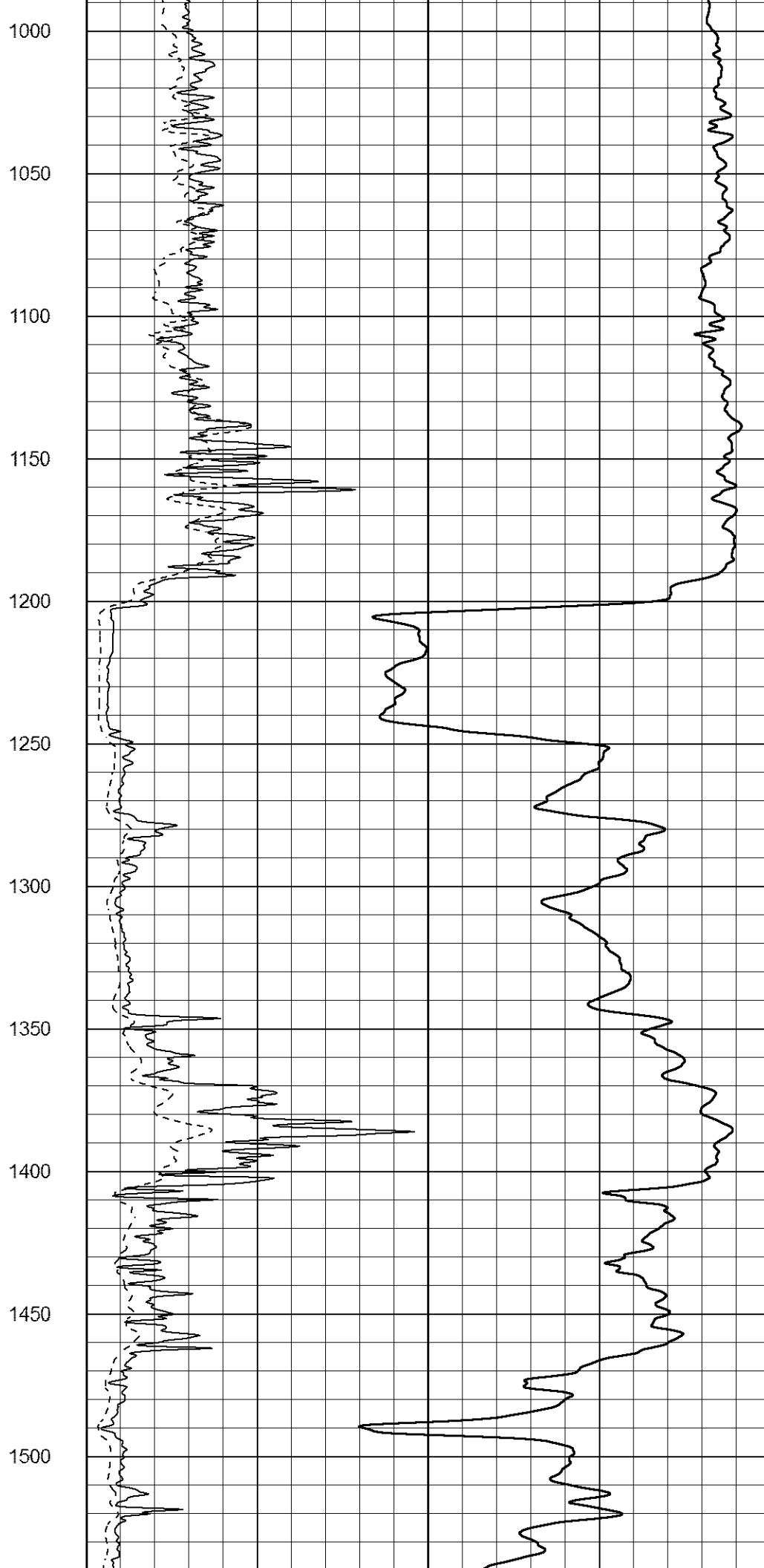
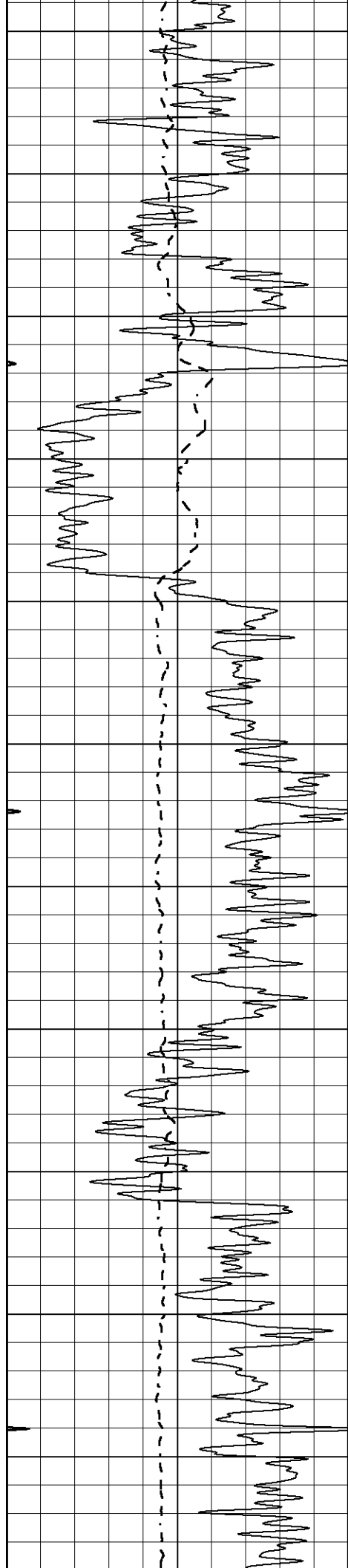
1000	CILD (mmho/m)	0
0	RLL3 (Ohm-m)	50
0	Deep Induction (Ohm-m)	50
50	RILD X10 (Ohm-m)	500
50	RLL3 X10 (Ohm-m)	500

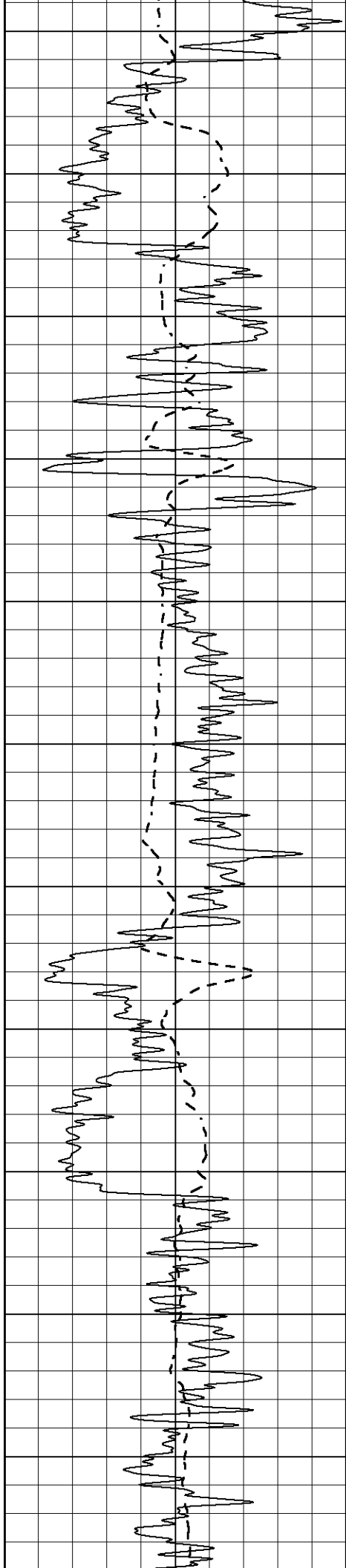




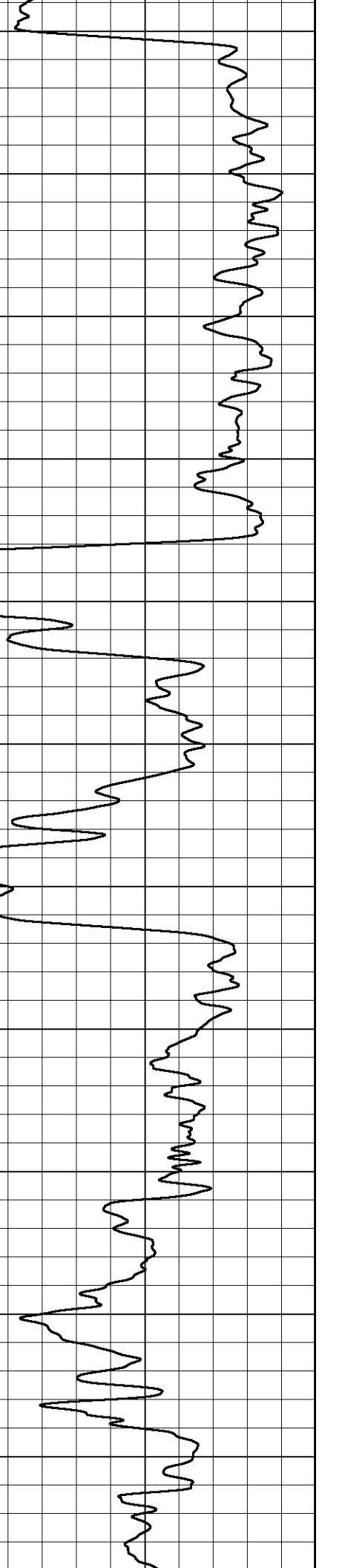
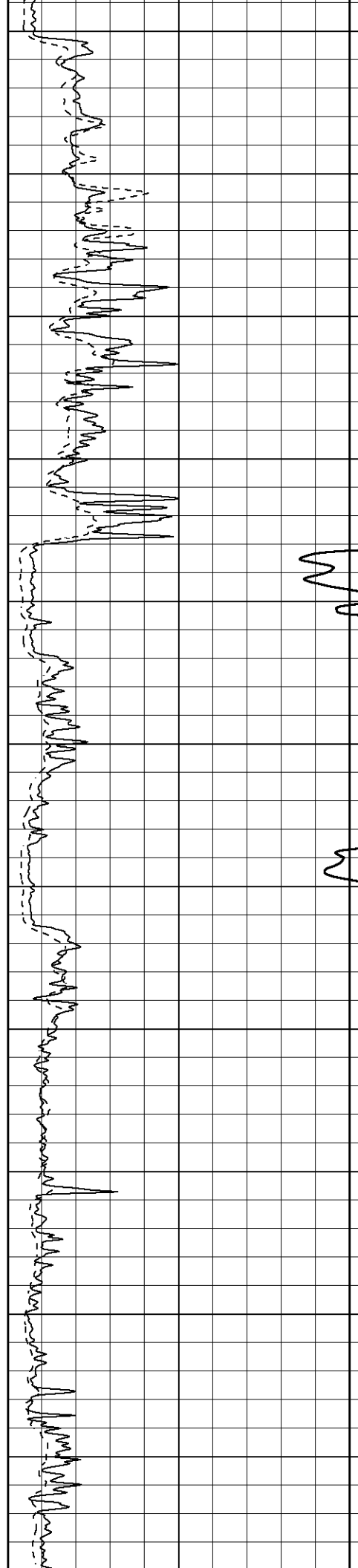
450
500
550
600
650
700
750
800
850
900
950

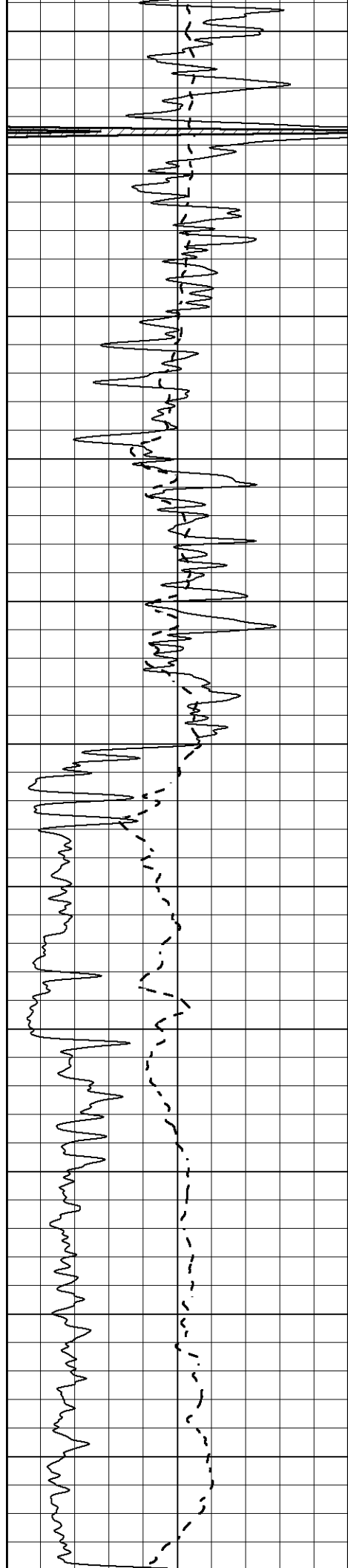




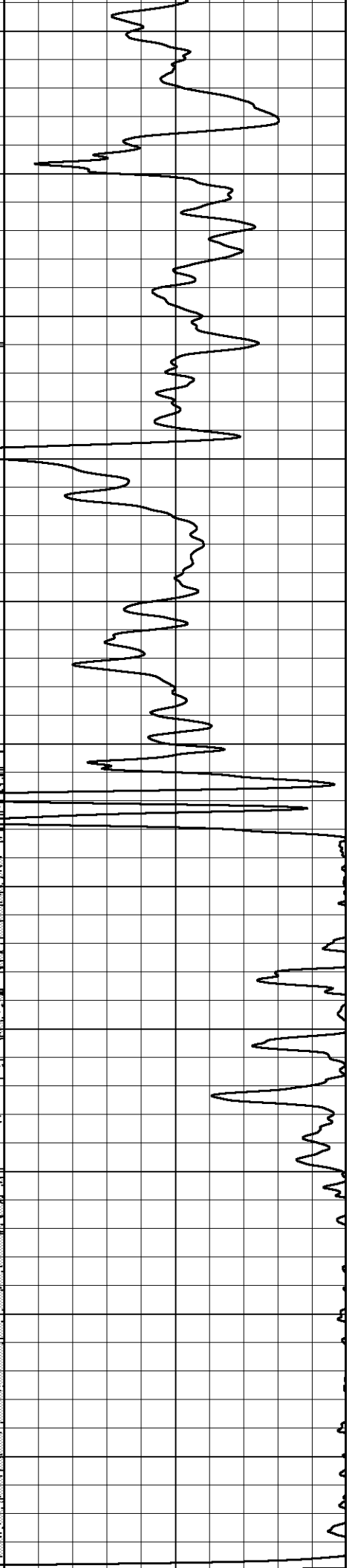
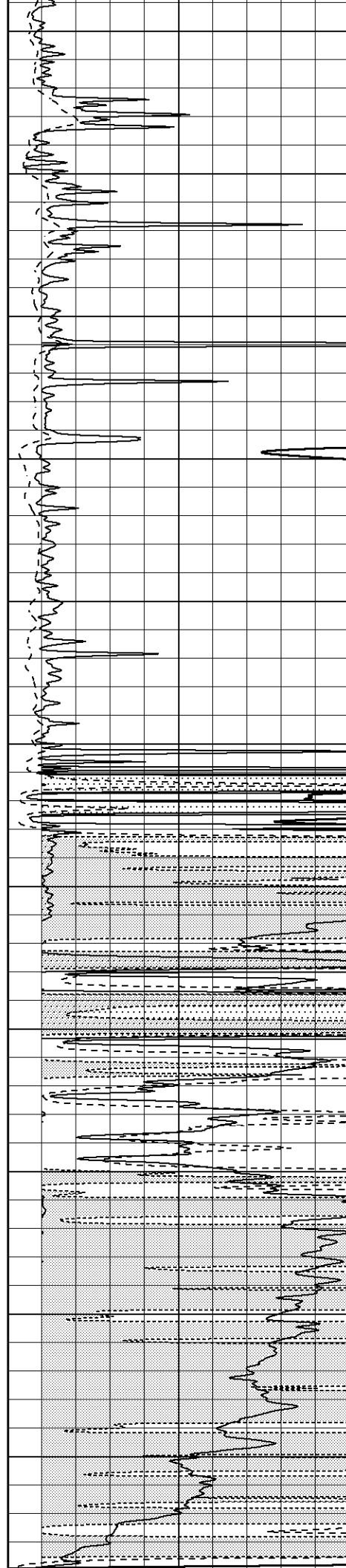


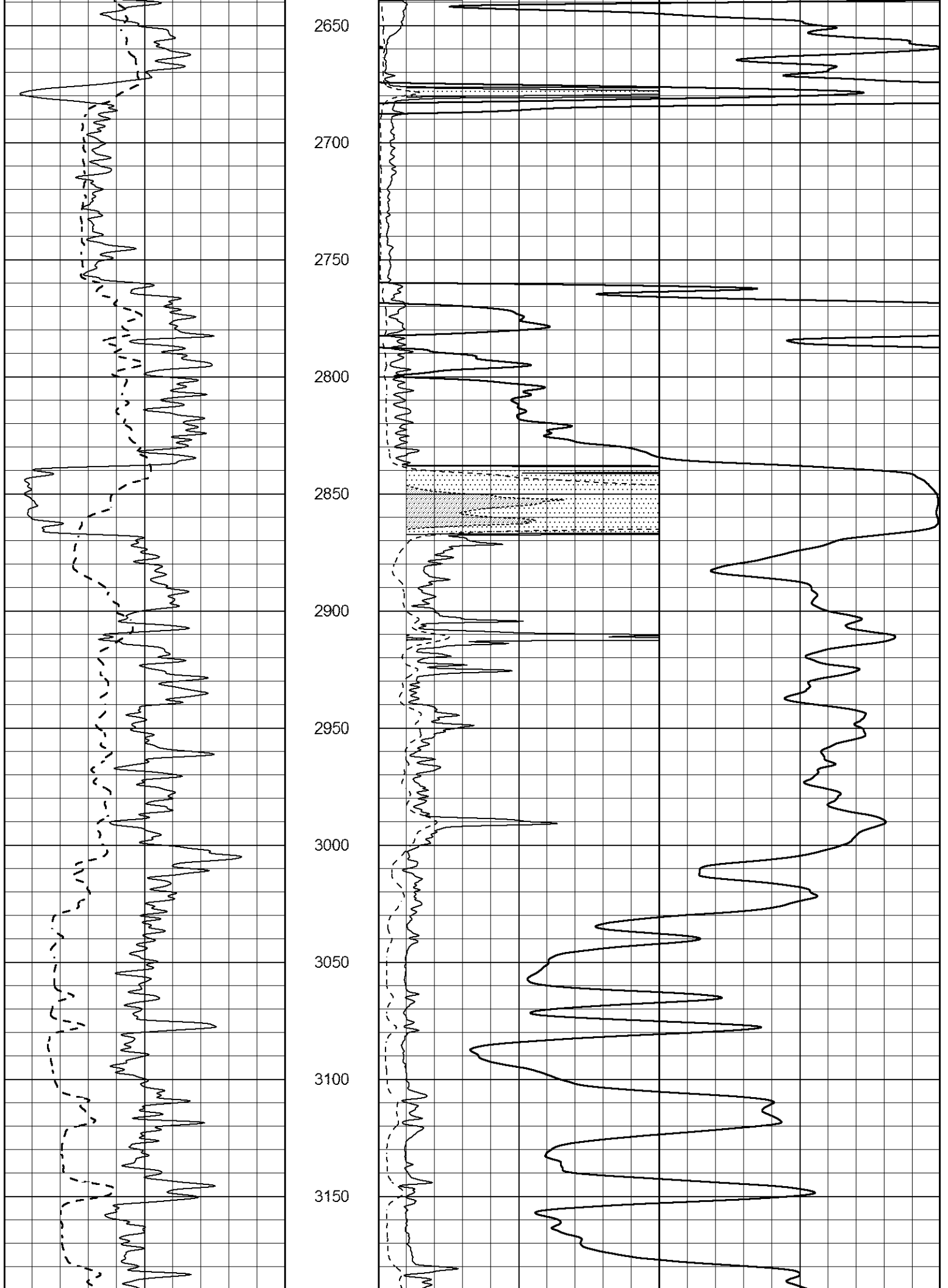
1550
1600
1650
1700
1750
1800
1850
1900
1950
2000
2050

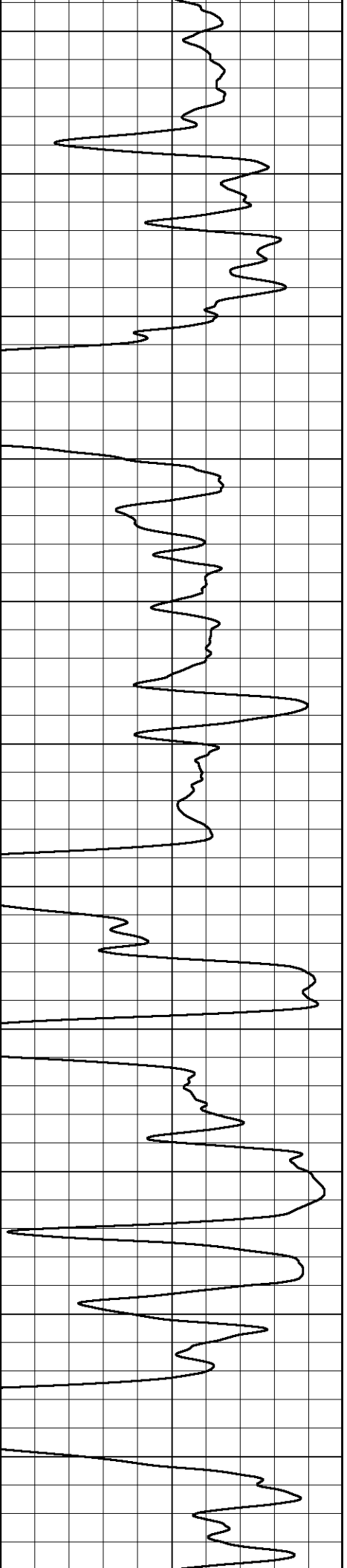
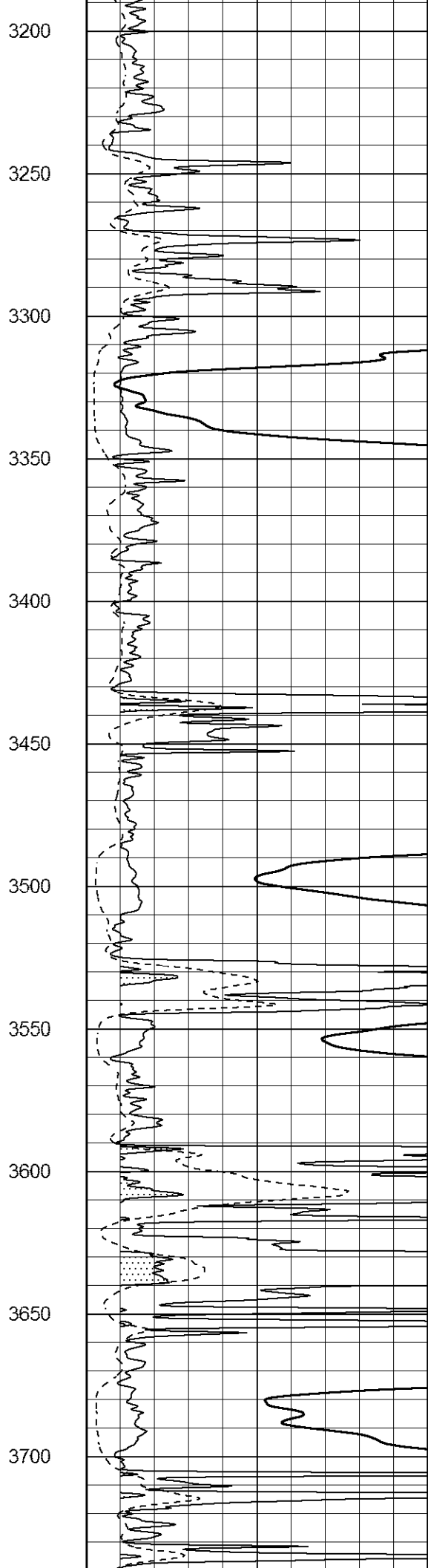
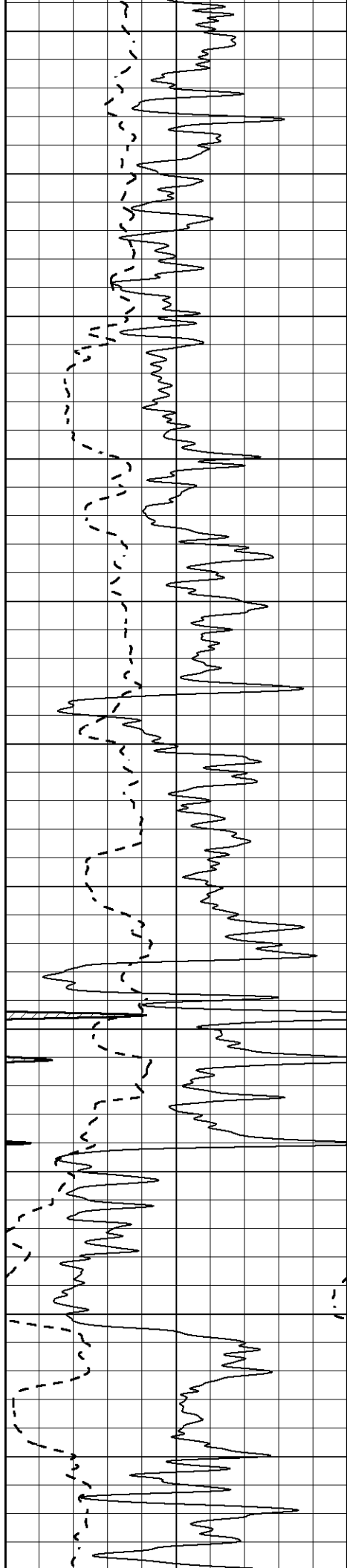


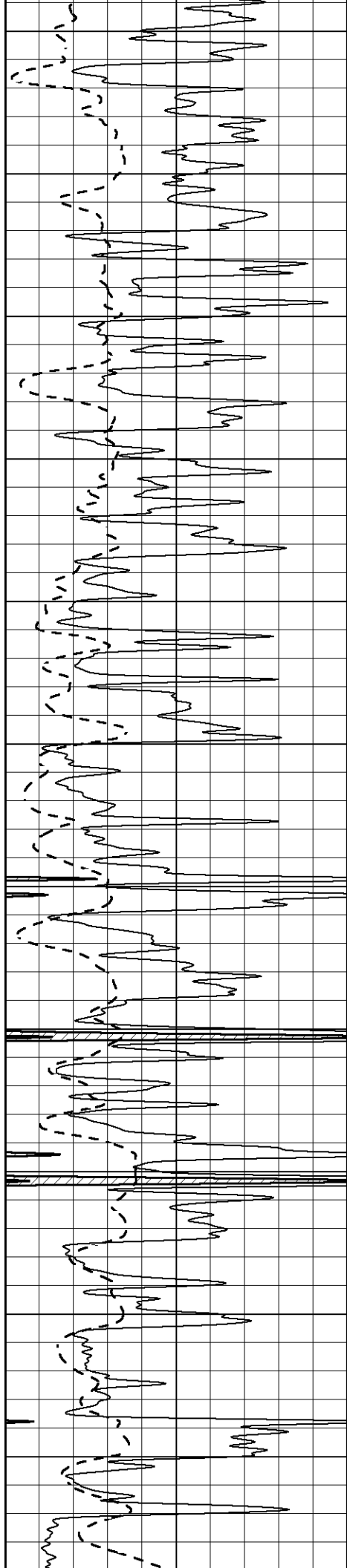


2100
2150
2200
2250
2300
2350
2400
2450
2500
2550
2600

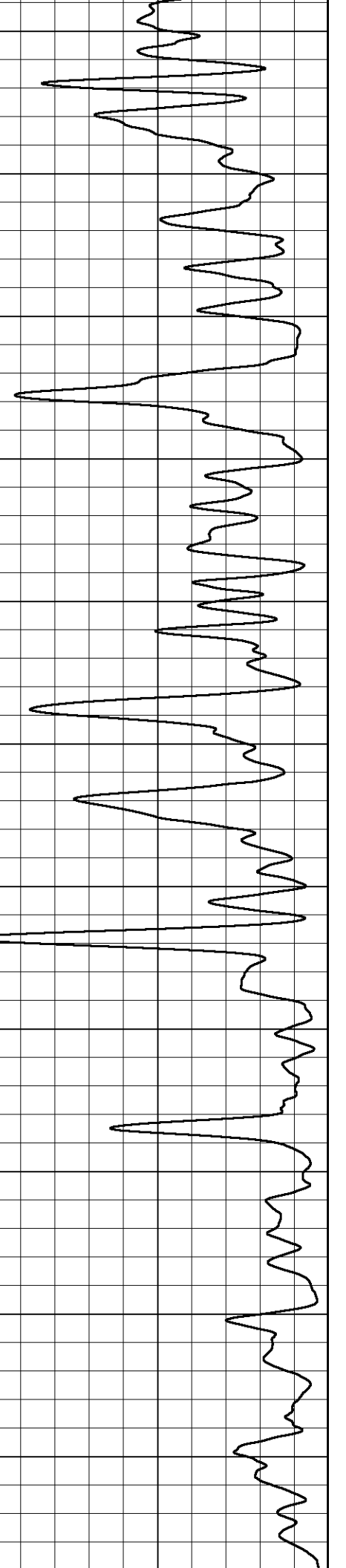
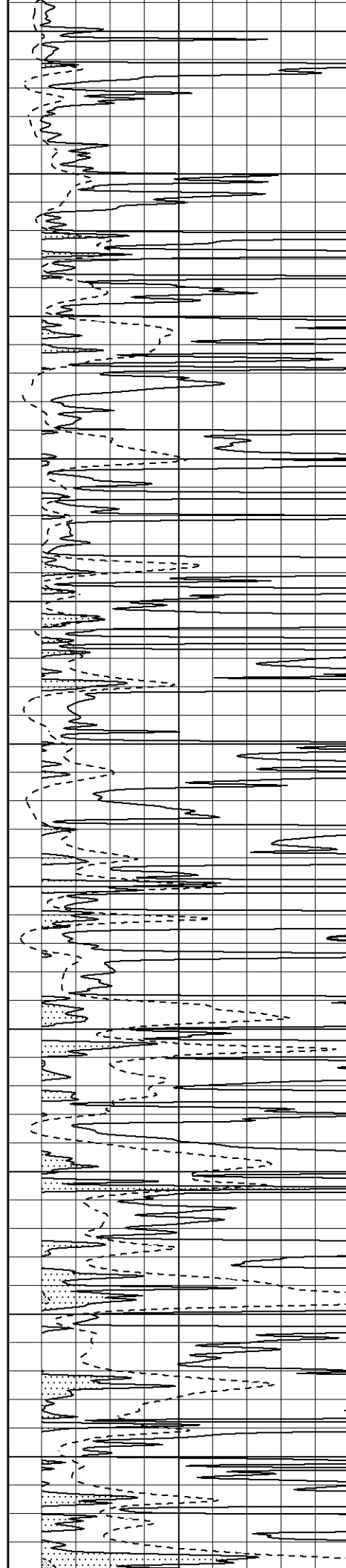


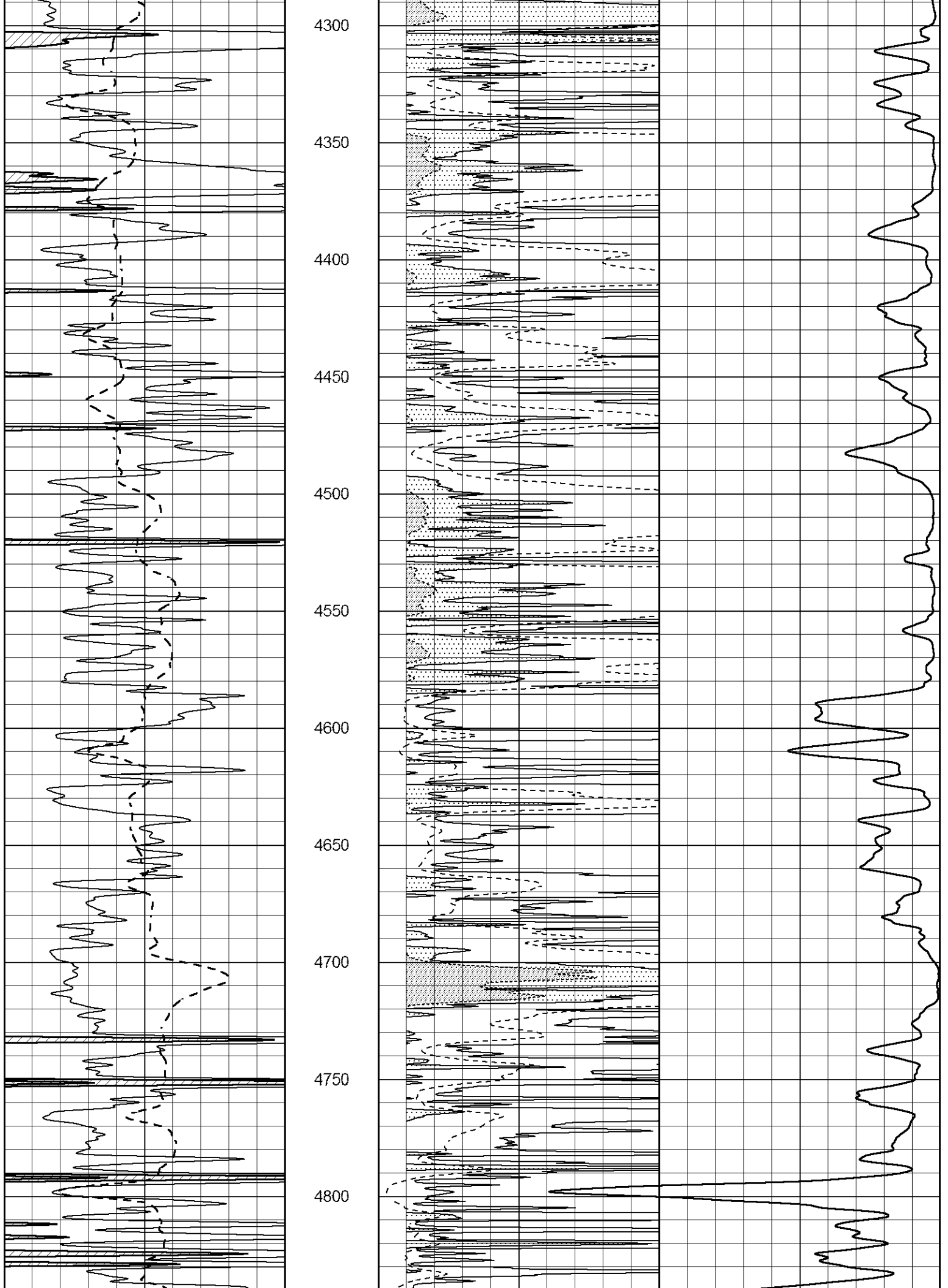


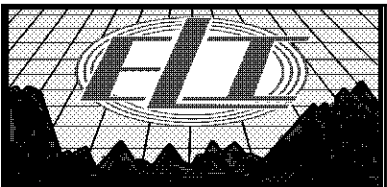
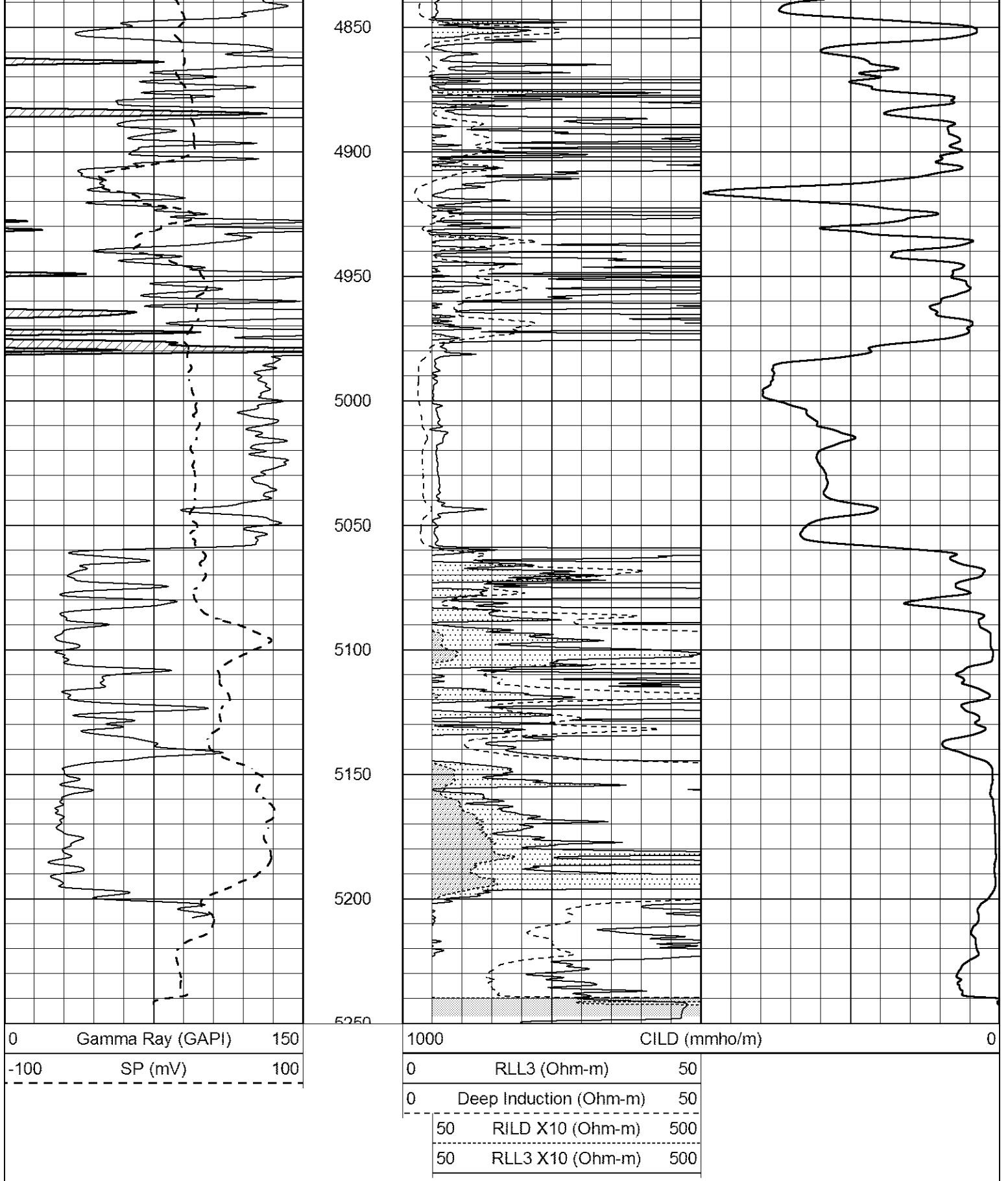




3750
3800
3850
3900
3950
4000
4050
4100
4150
4200
4250





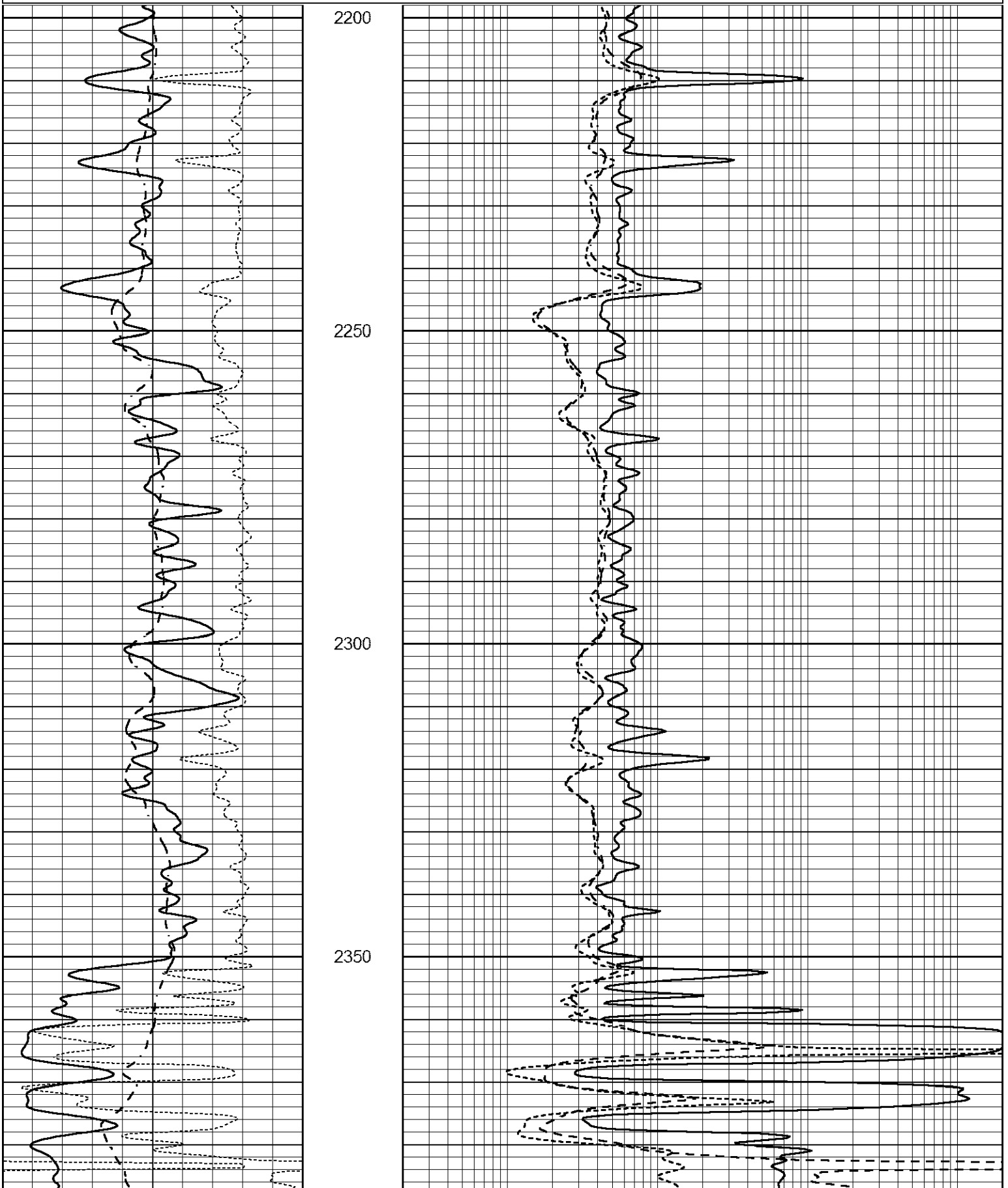


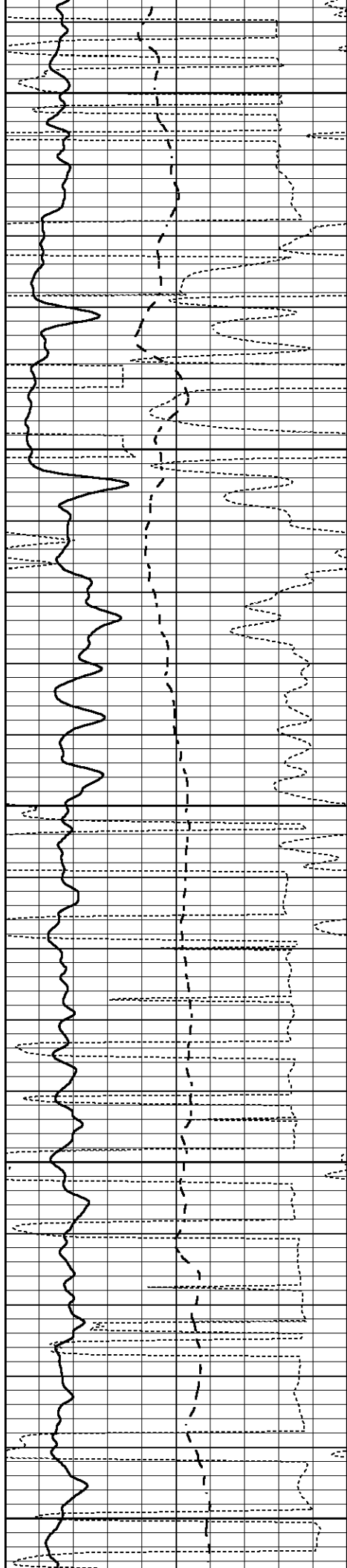
MAIN SECTION

Dataset Pathname pass3.2
 Presentation Format _dil
 Dataset Creation Fri Feb 11 02:23:00 2022
 Charted by Depth in Feet scaled 1:240

0	GAMMA RAY (GAPI)	150
-100	SP (mV)	100
-250	Rxo/Rt	50

0.2	SHALLOW GUARD (Ohm-m)	2000
0.2	MEDIUM INDUCTION (Ohm-m)	2000
0.2	DEEP INDUCTION (Ohm-m)	2000





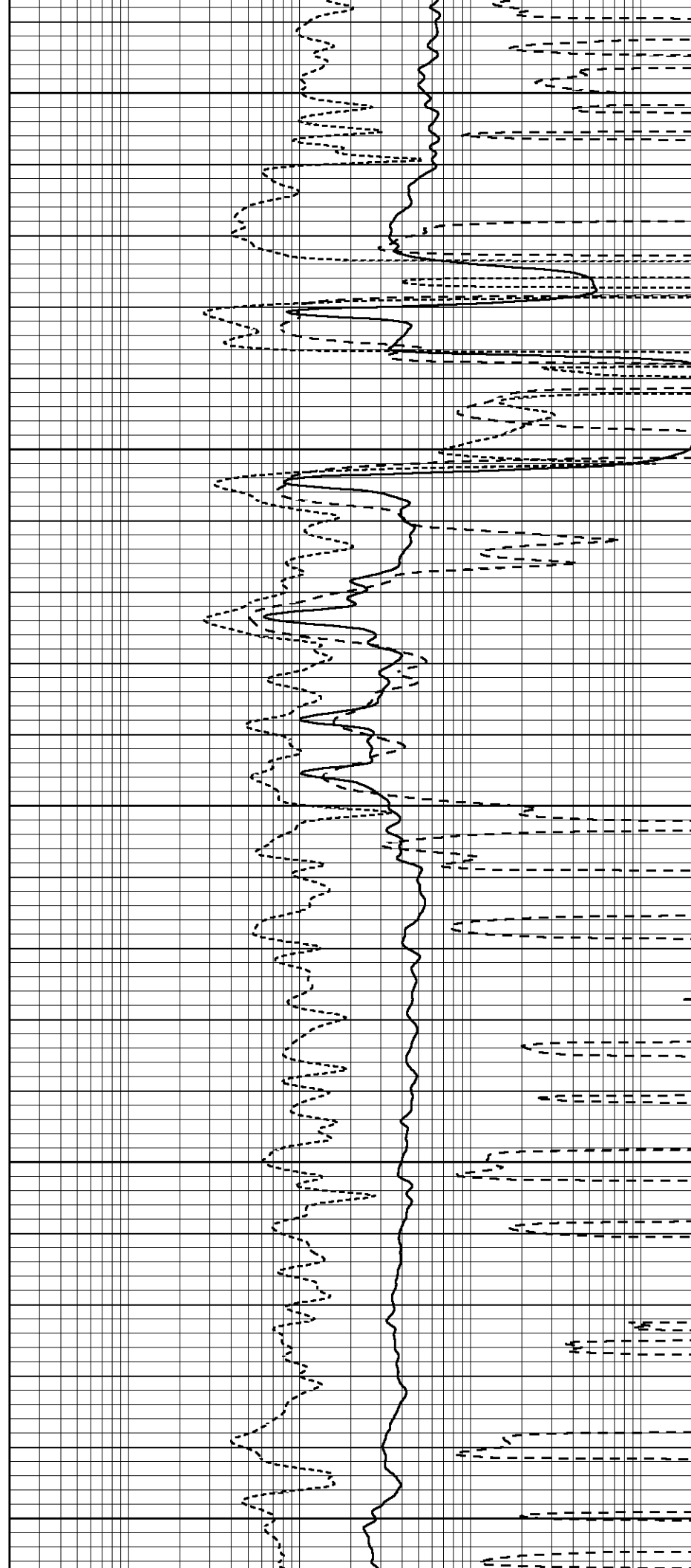
2400

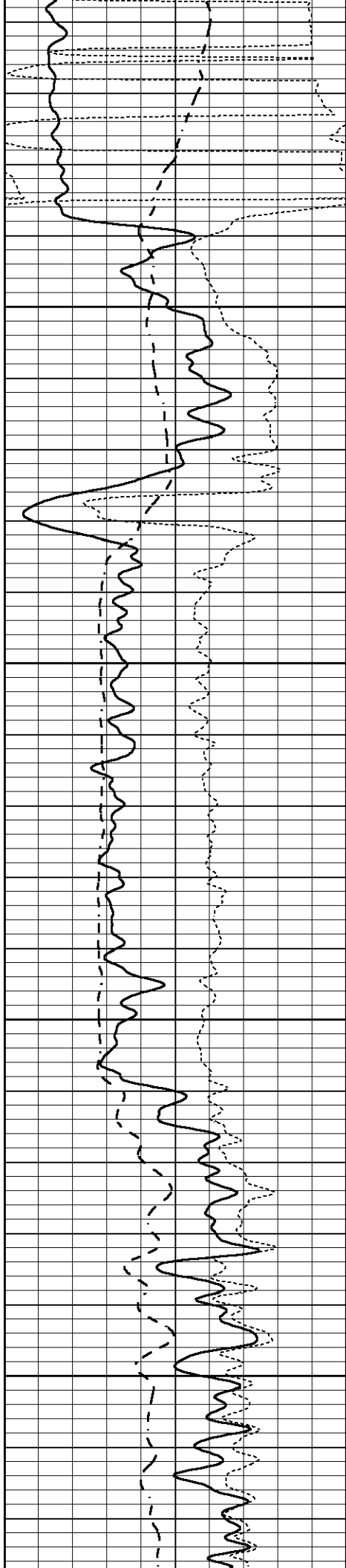
2450

2500

2550

2600



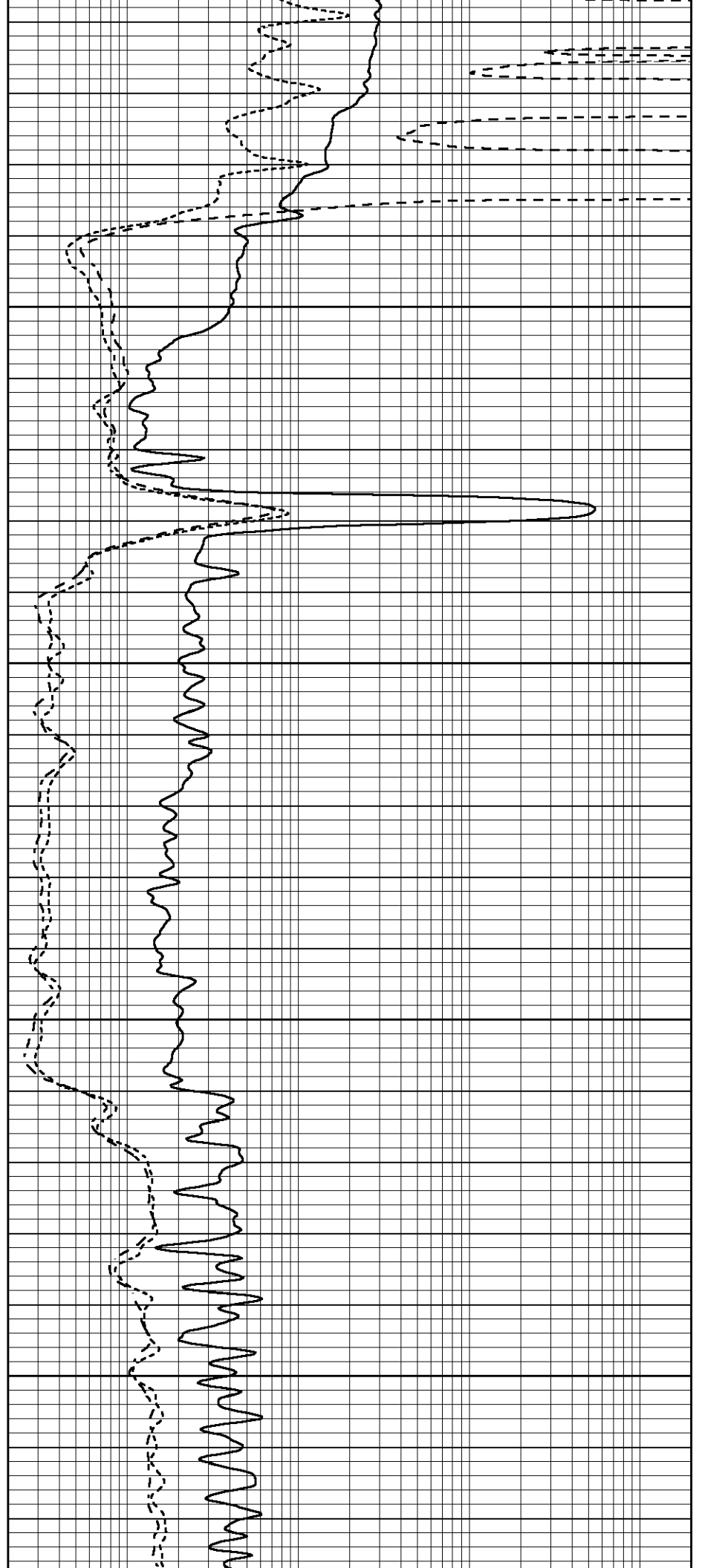


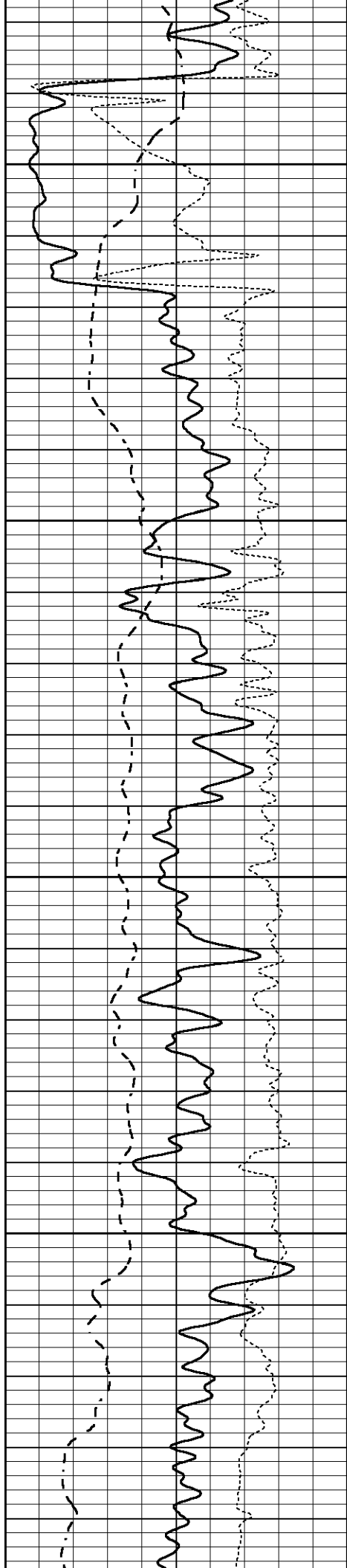
2650

2700

2750

2800



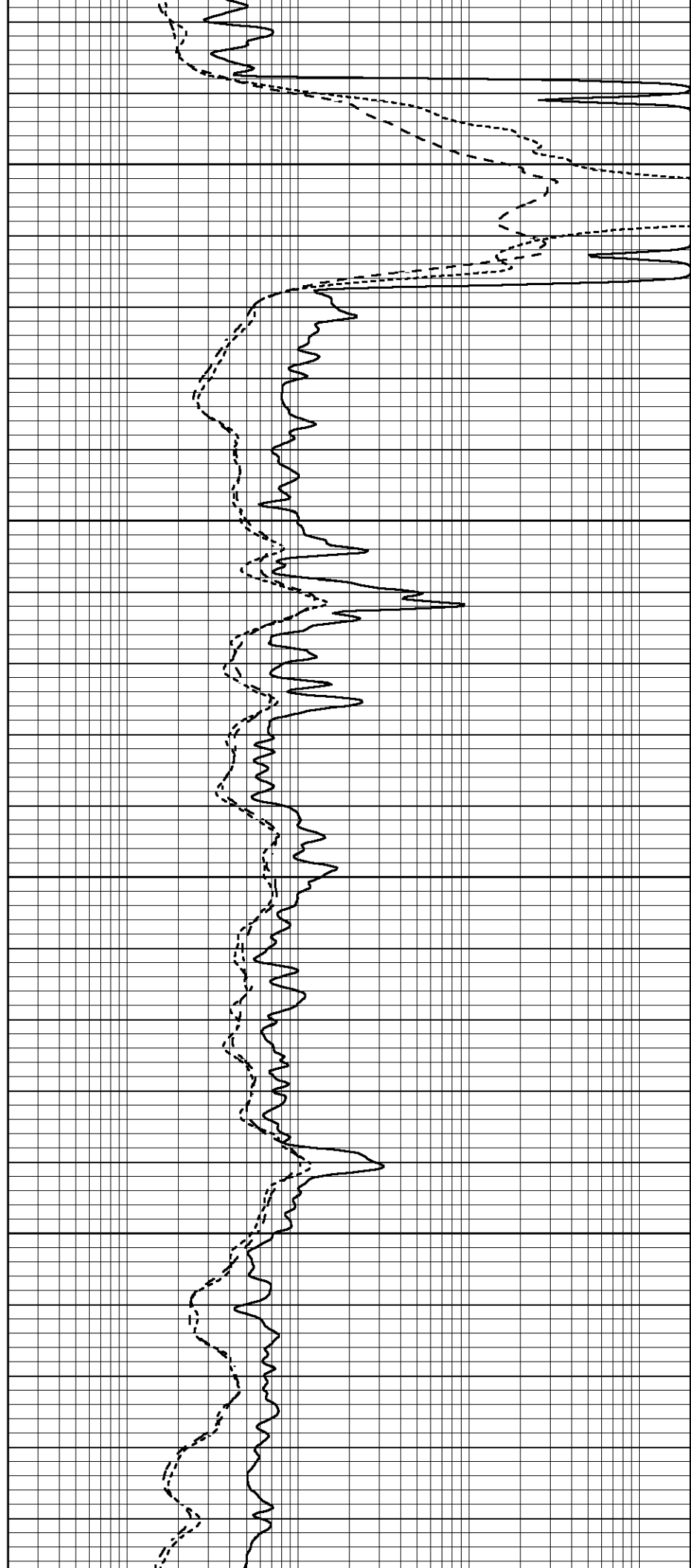


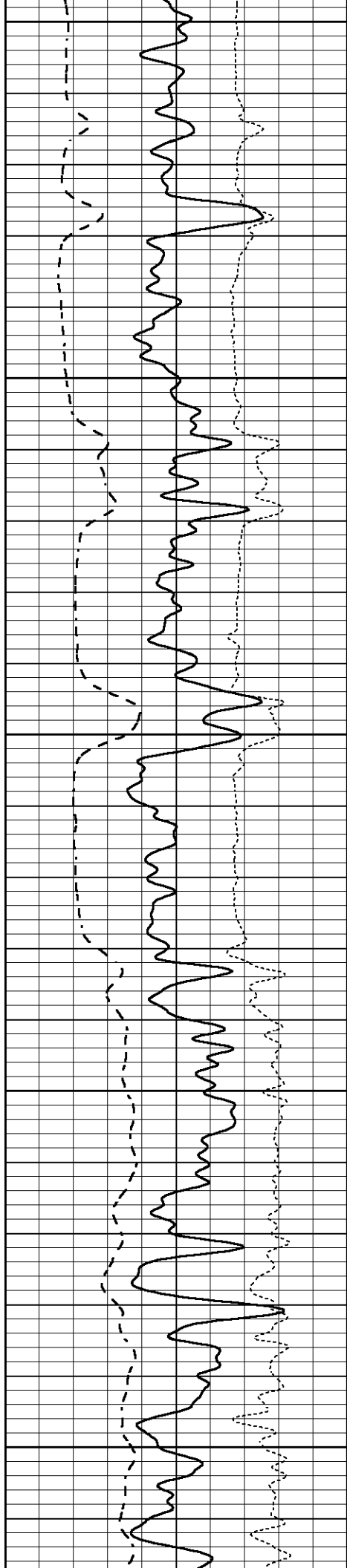
2850

2900

2950

3000





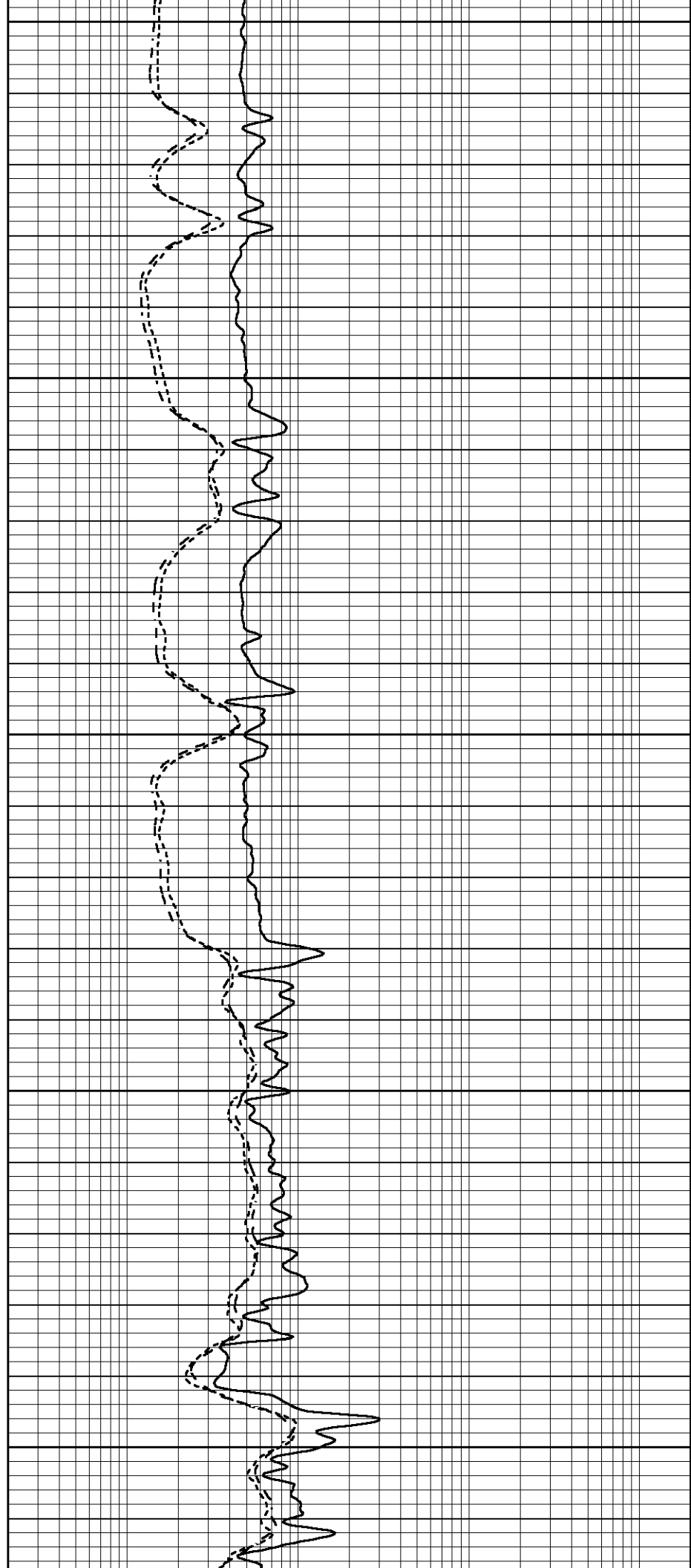
3050

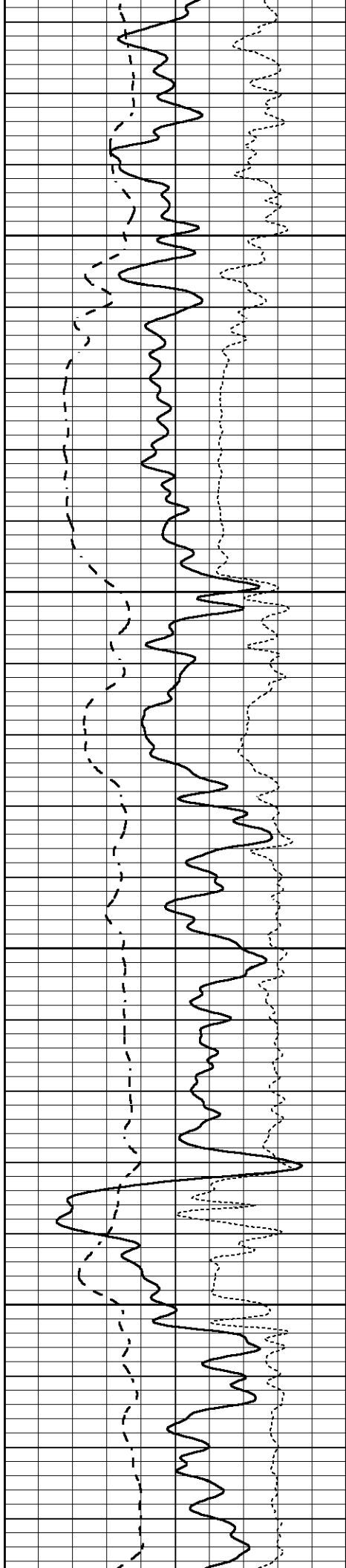
3100

3150

3200

3250



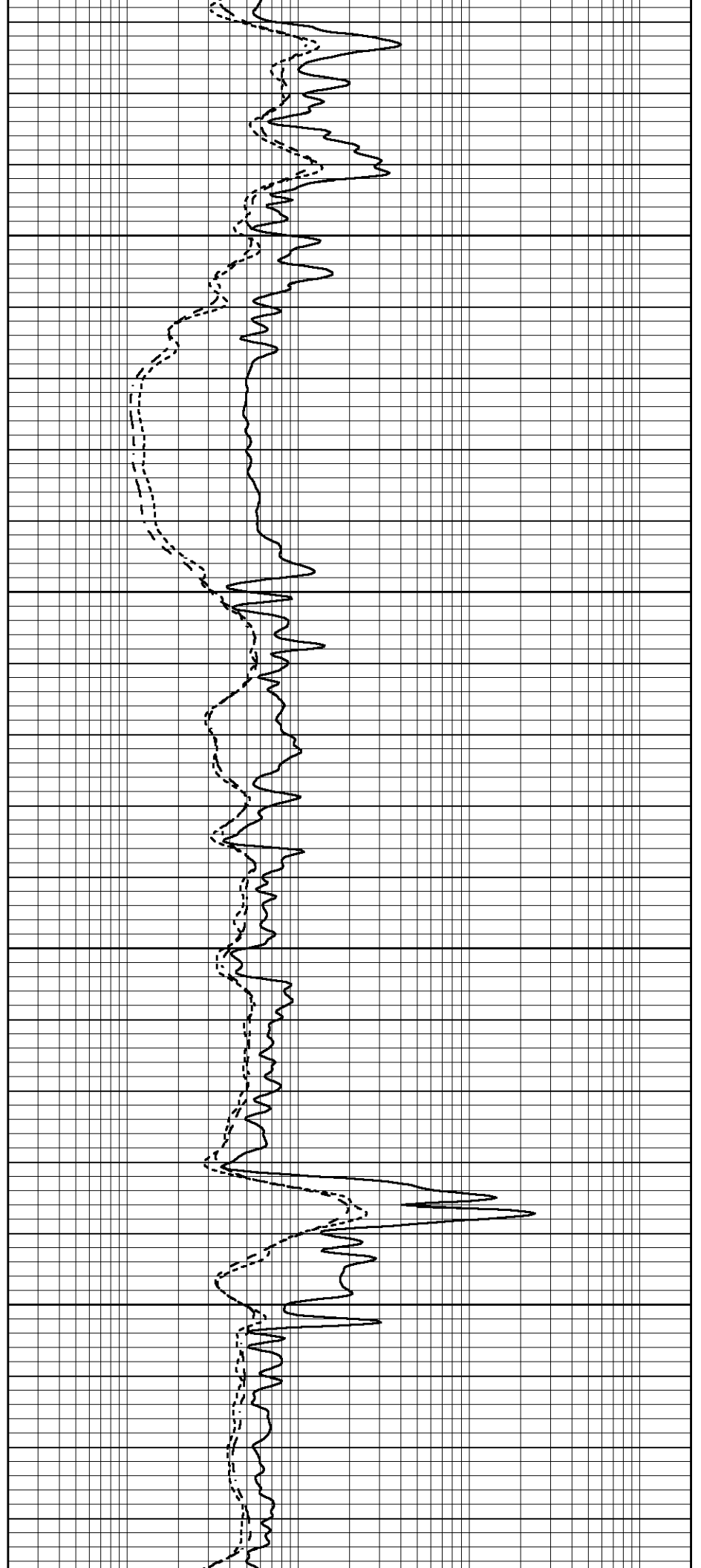


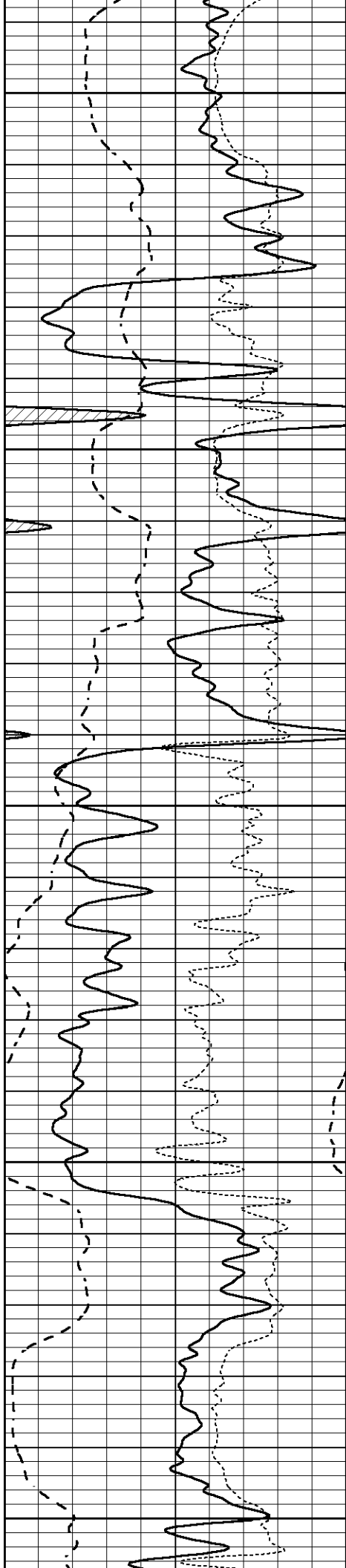
3300

3350

3400

3450





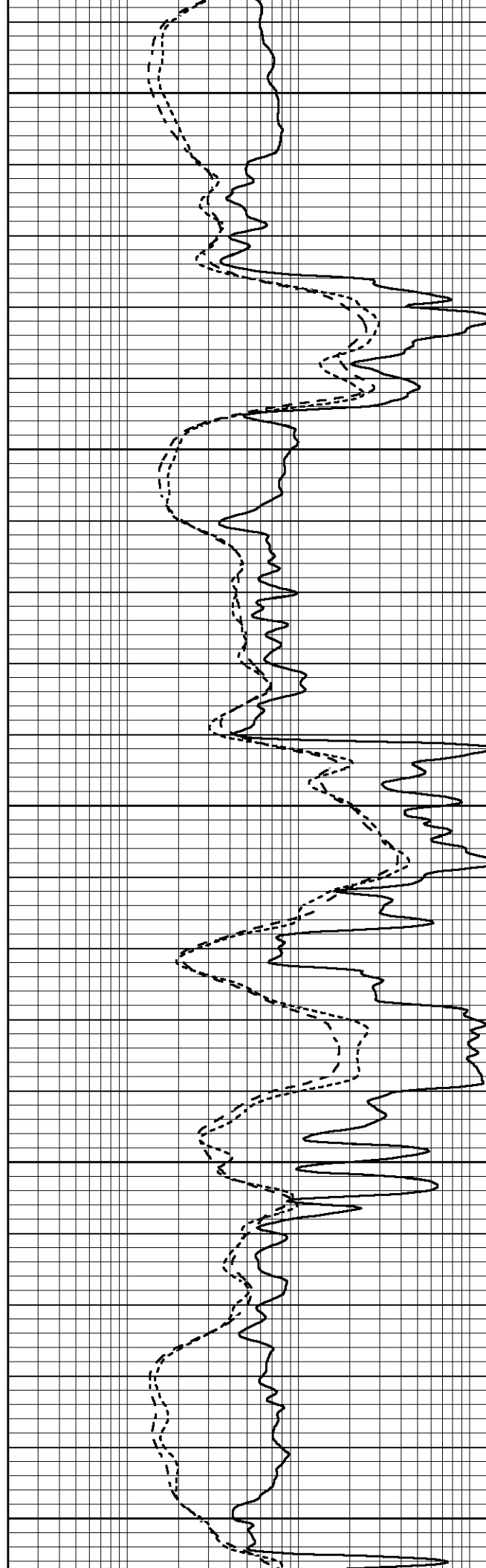
3500

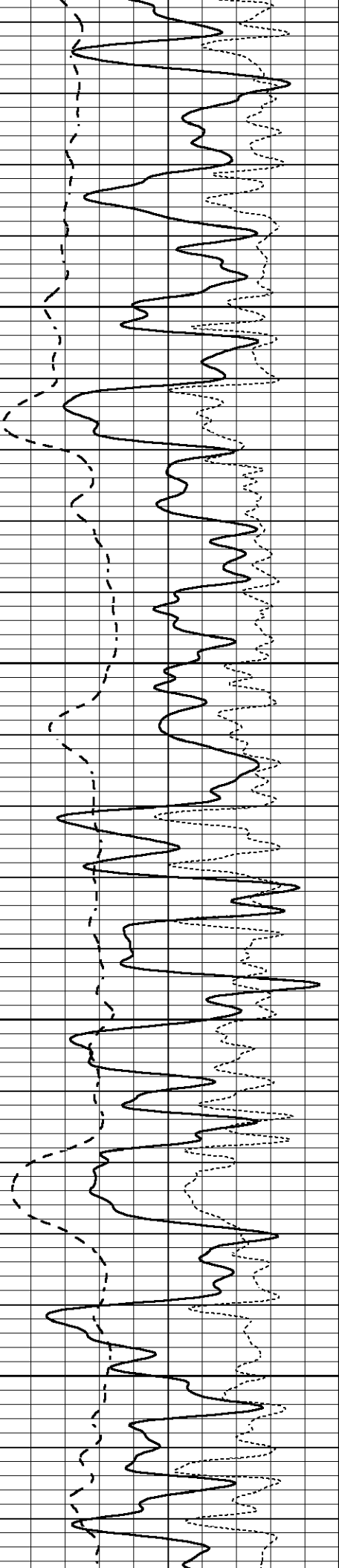
3550

3600

3650

3700



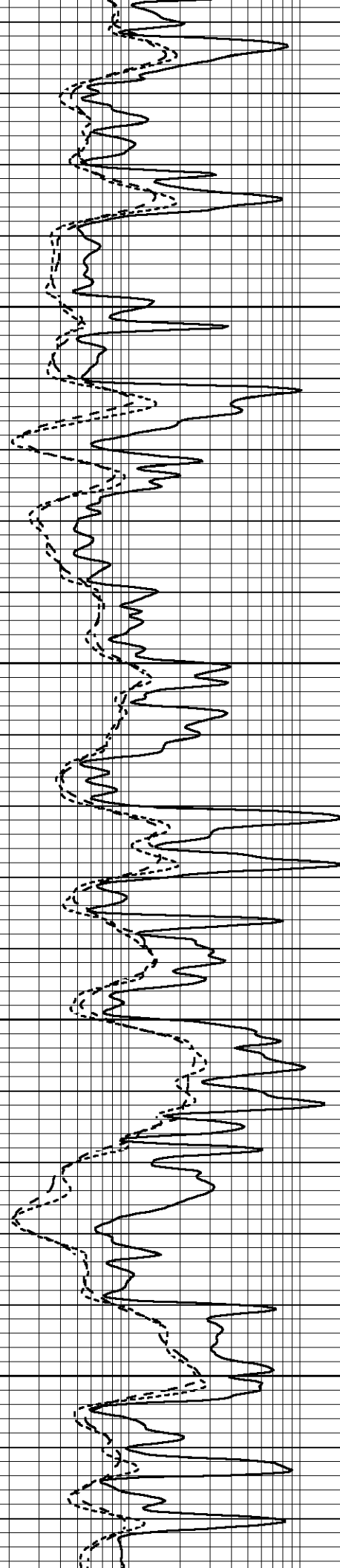


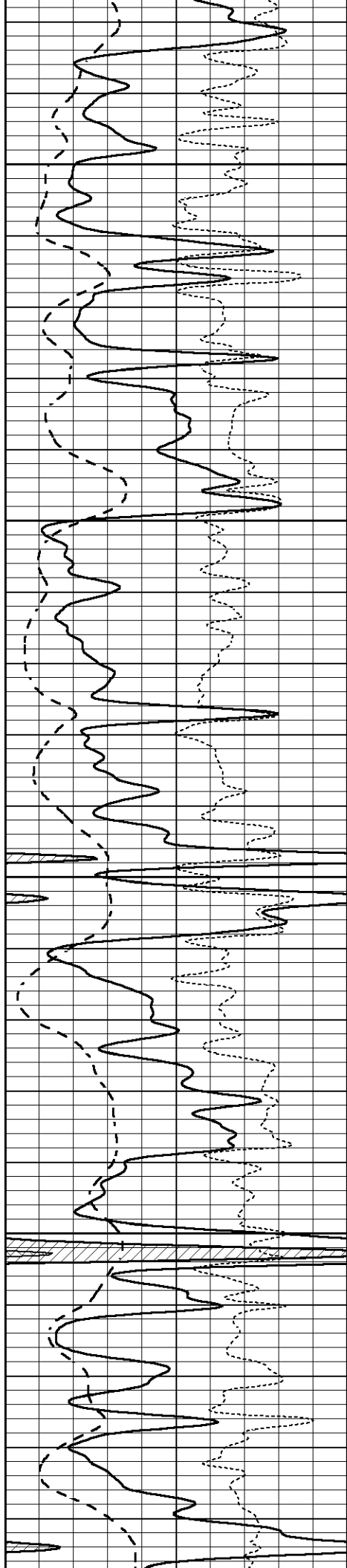
3750

3800

3850

3900



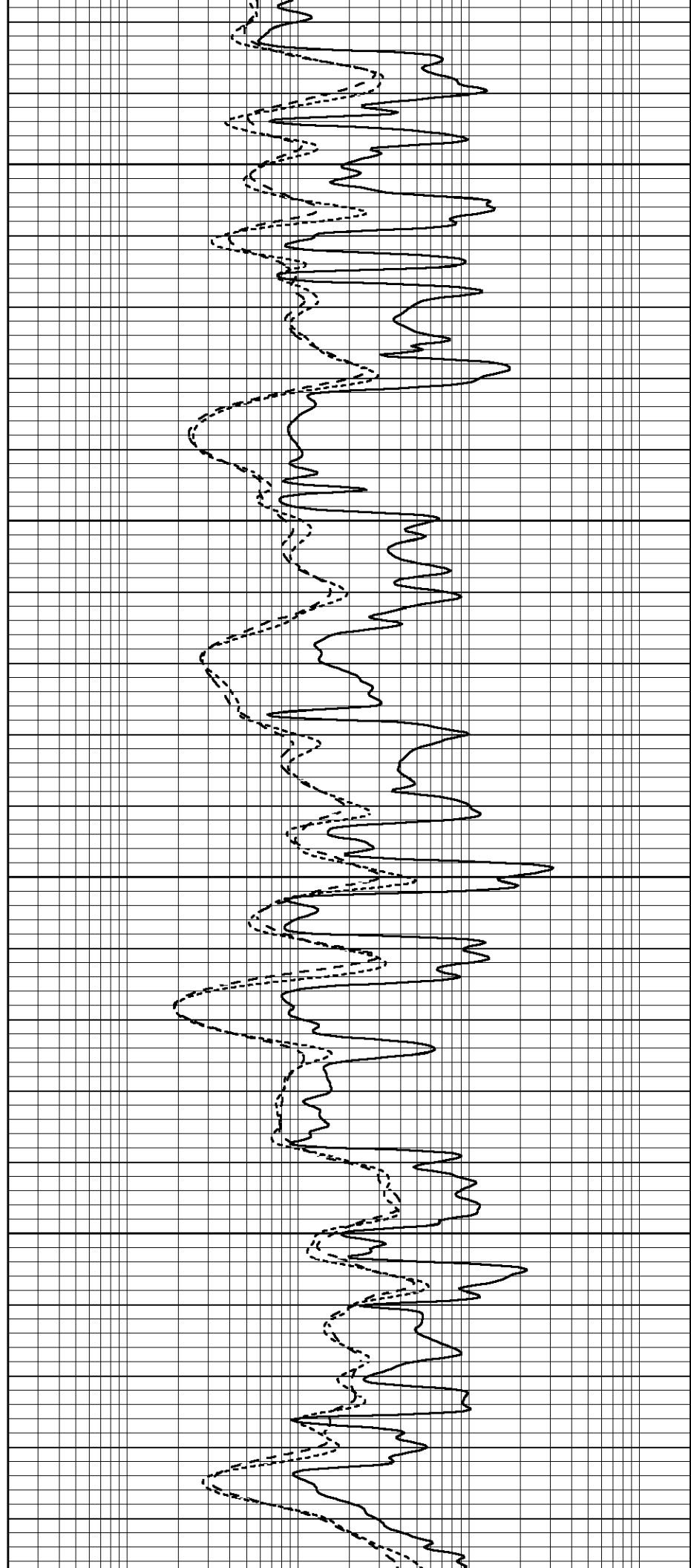


3950

4000

4050

4100



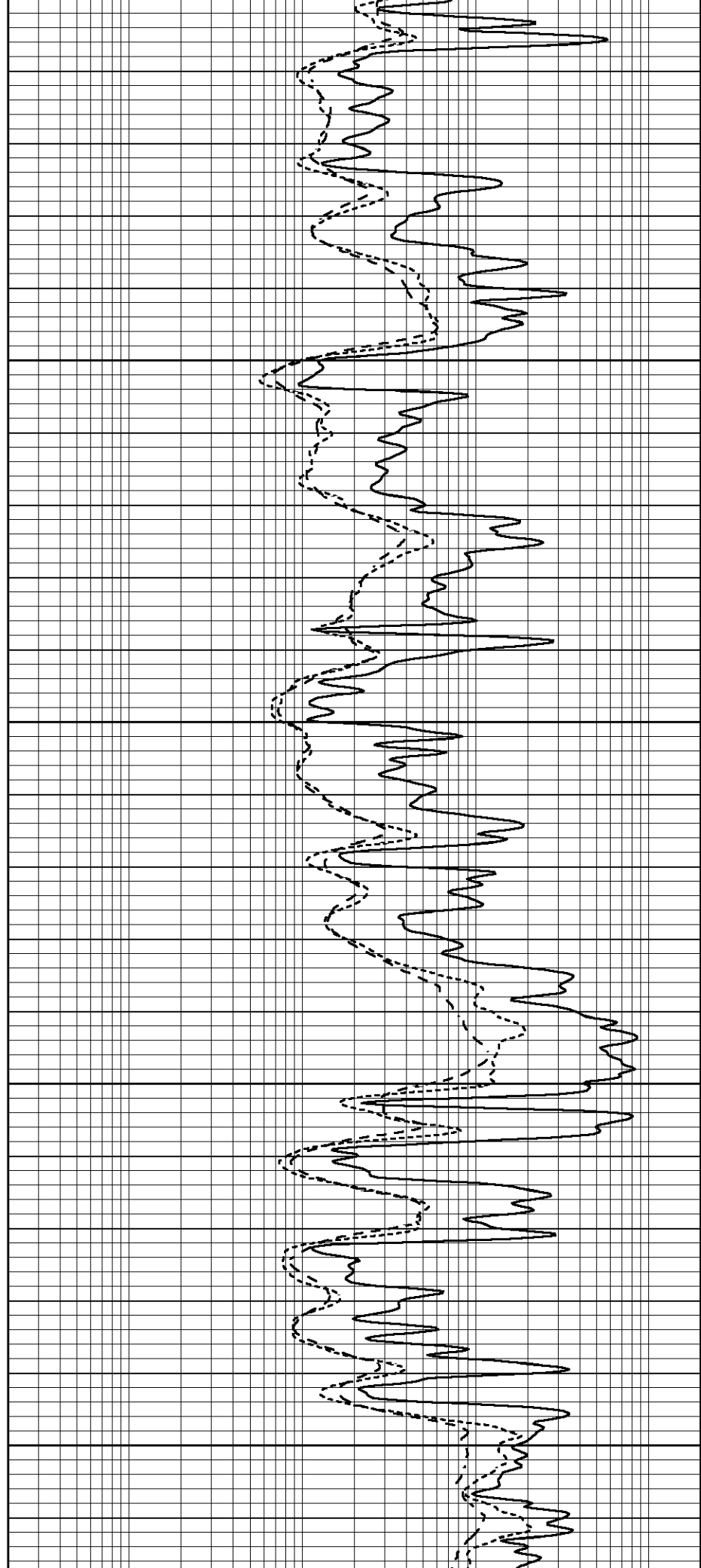
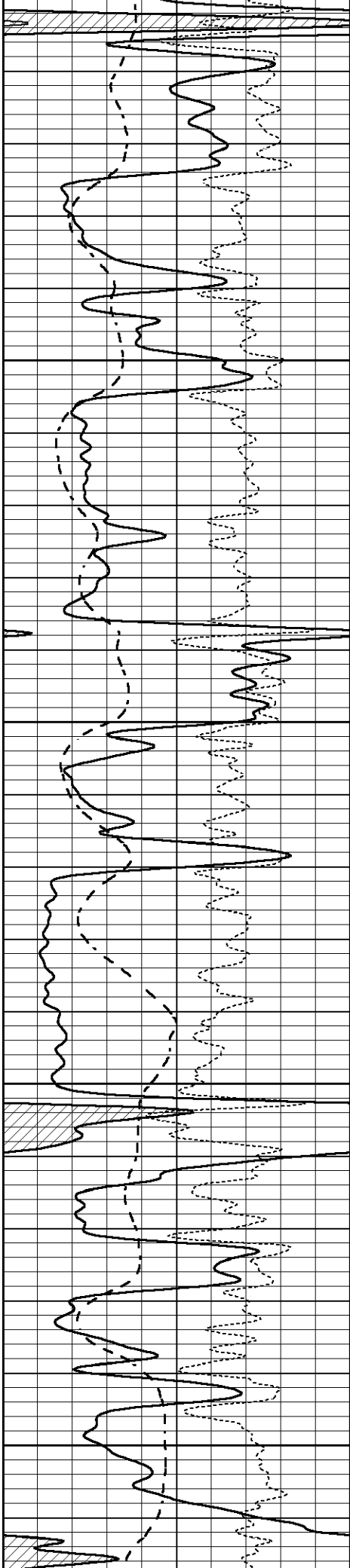
4150

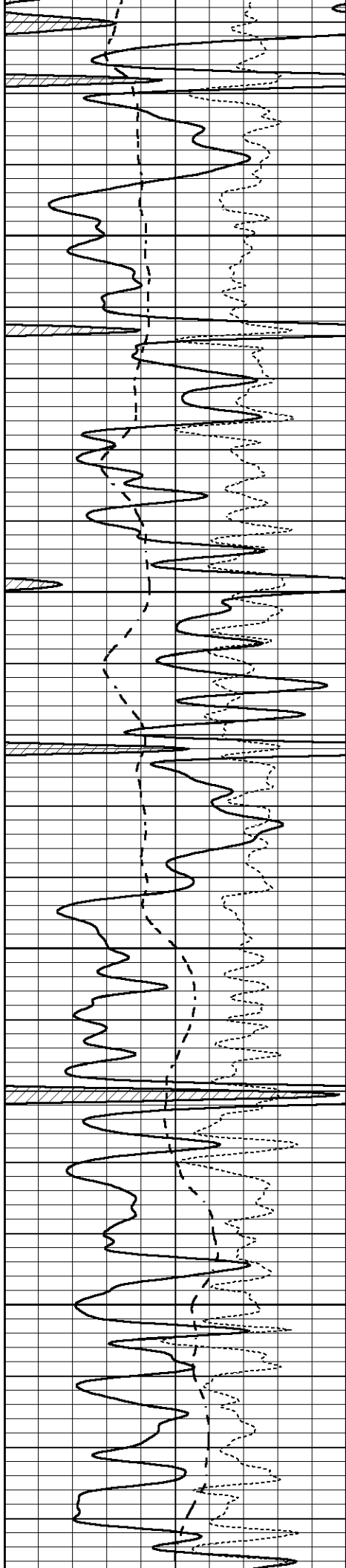
4200

4250

4300

4350



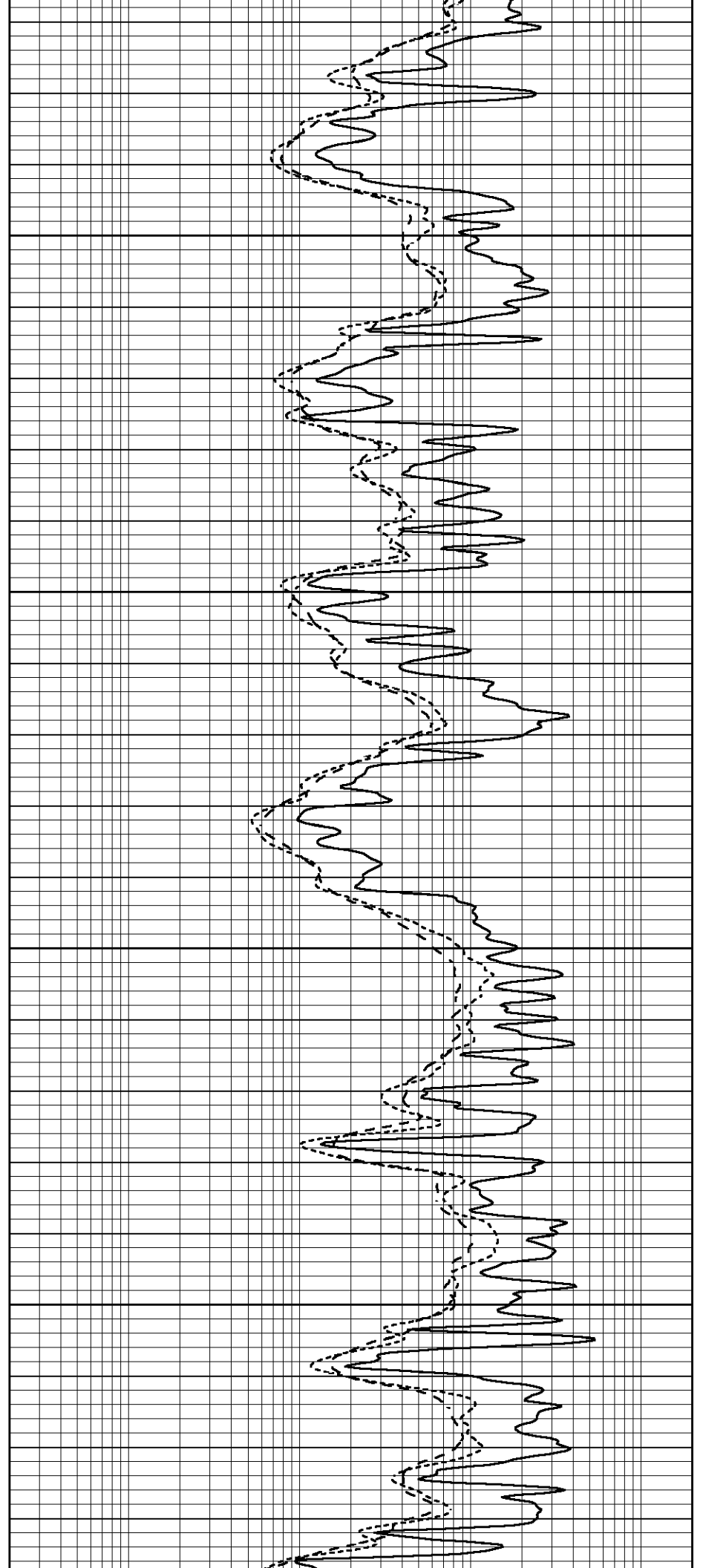


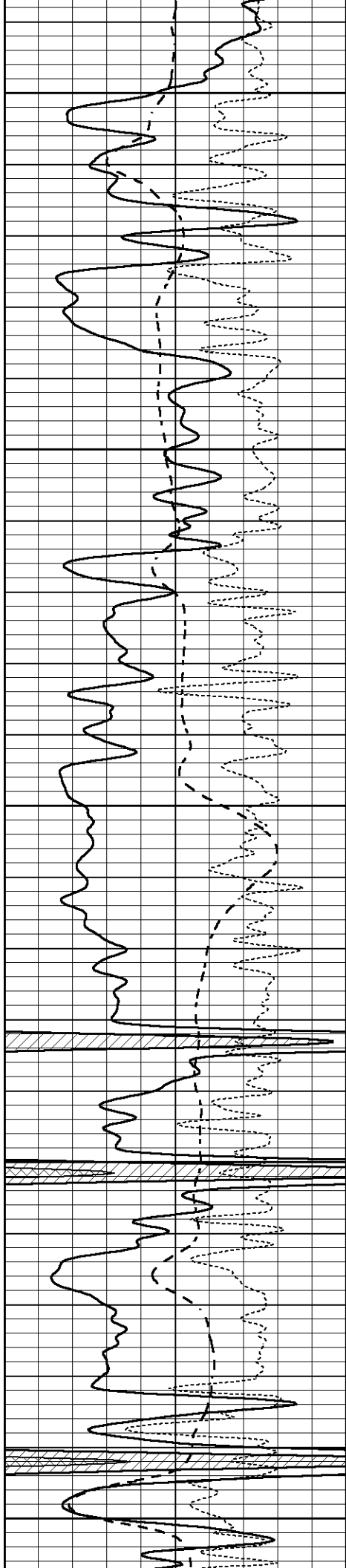
4400

4450

4500

4550





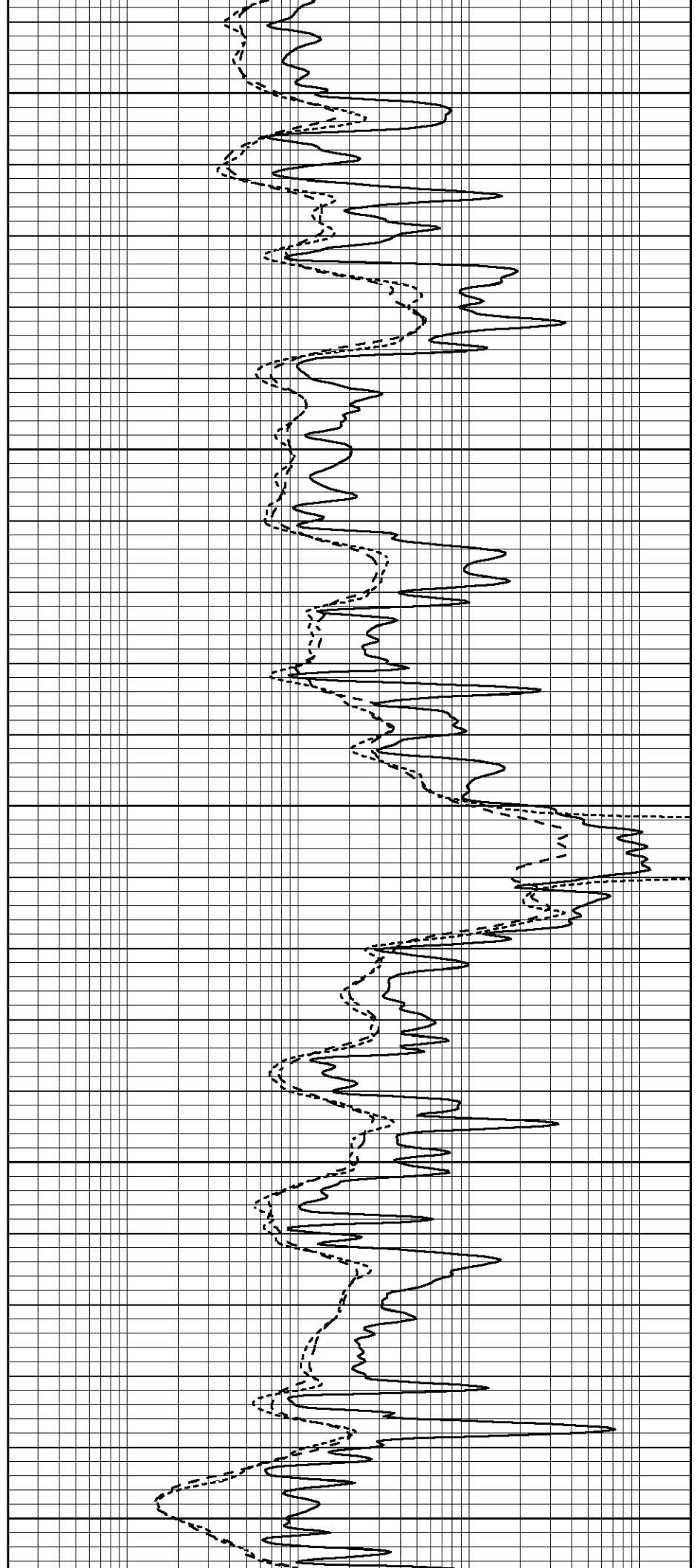
4600

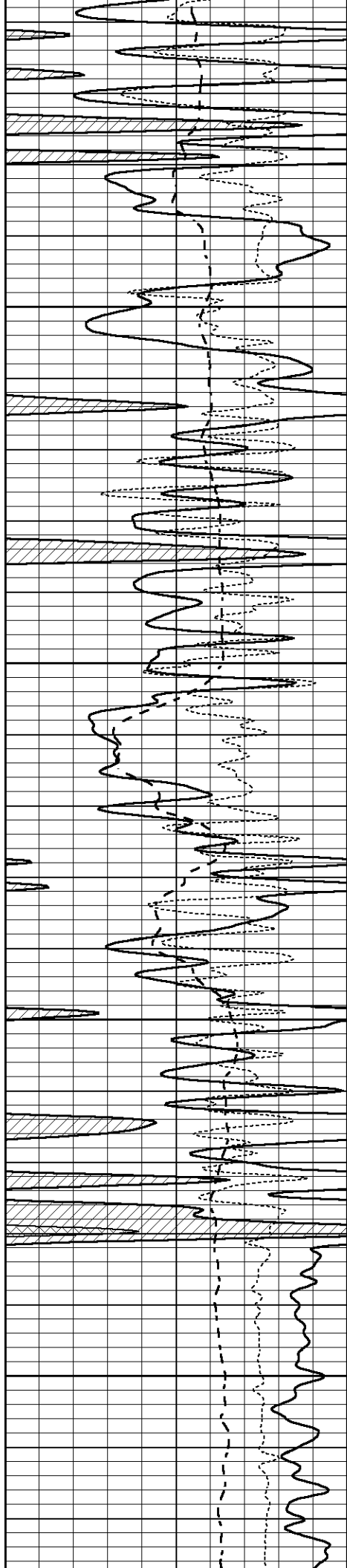
4650

4700

4750

4800



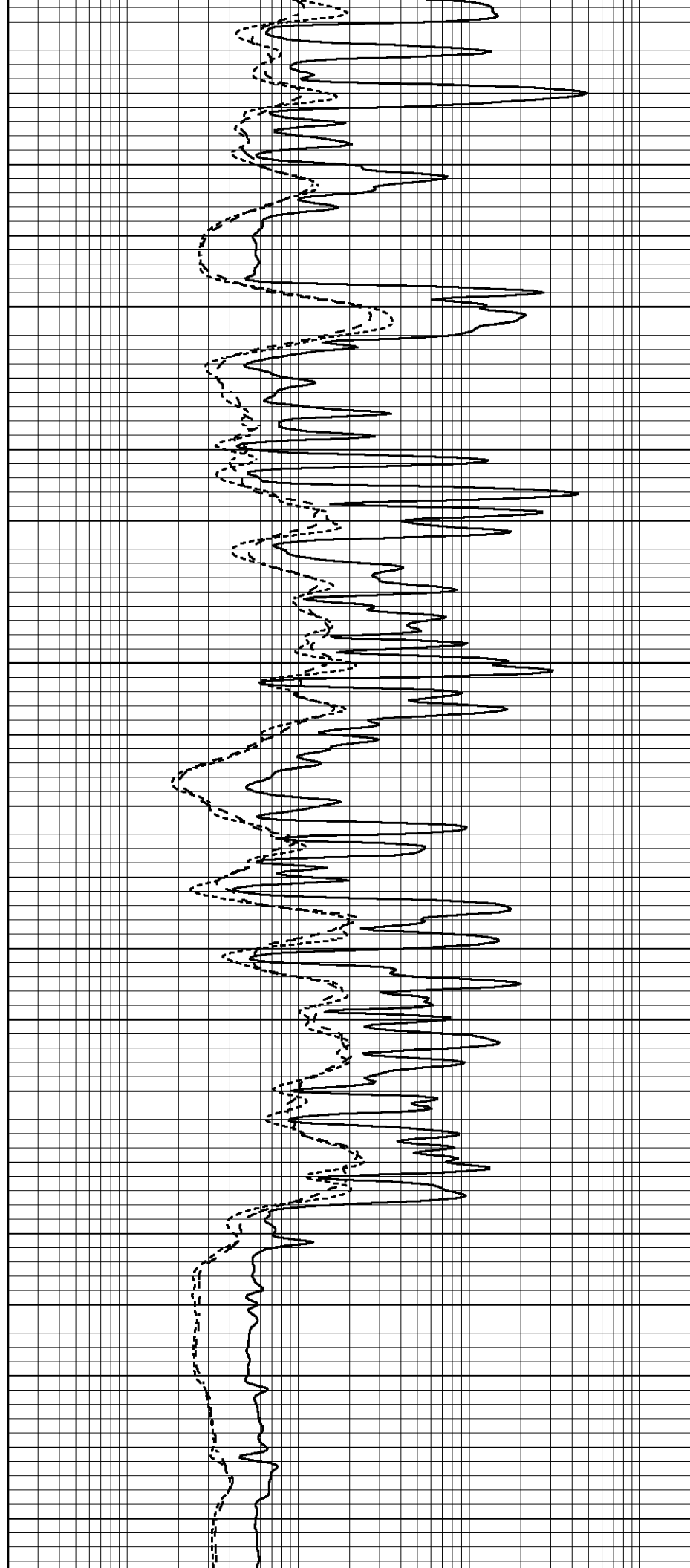


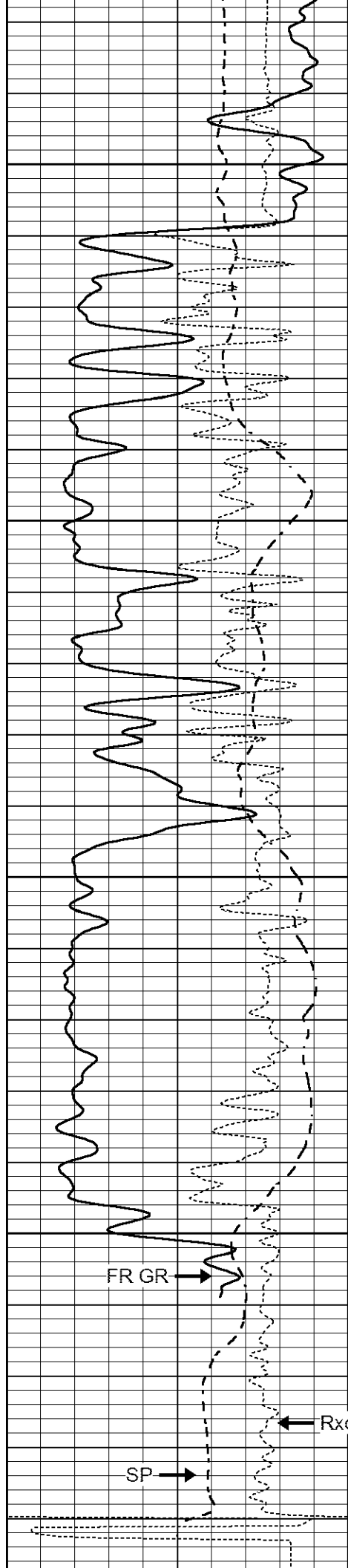
4850

4900

4950

5000





5050

5100

5150

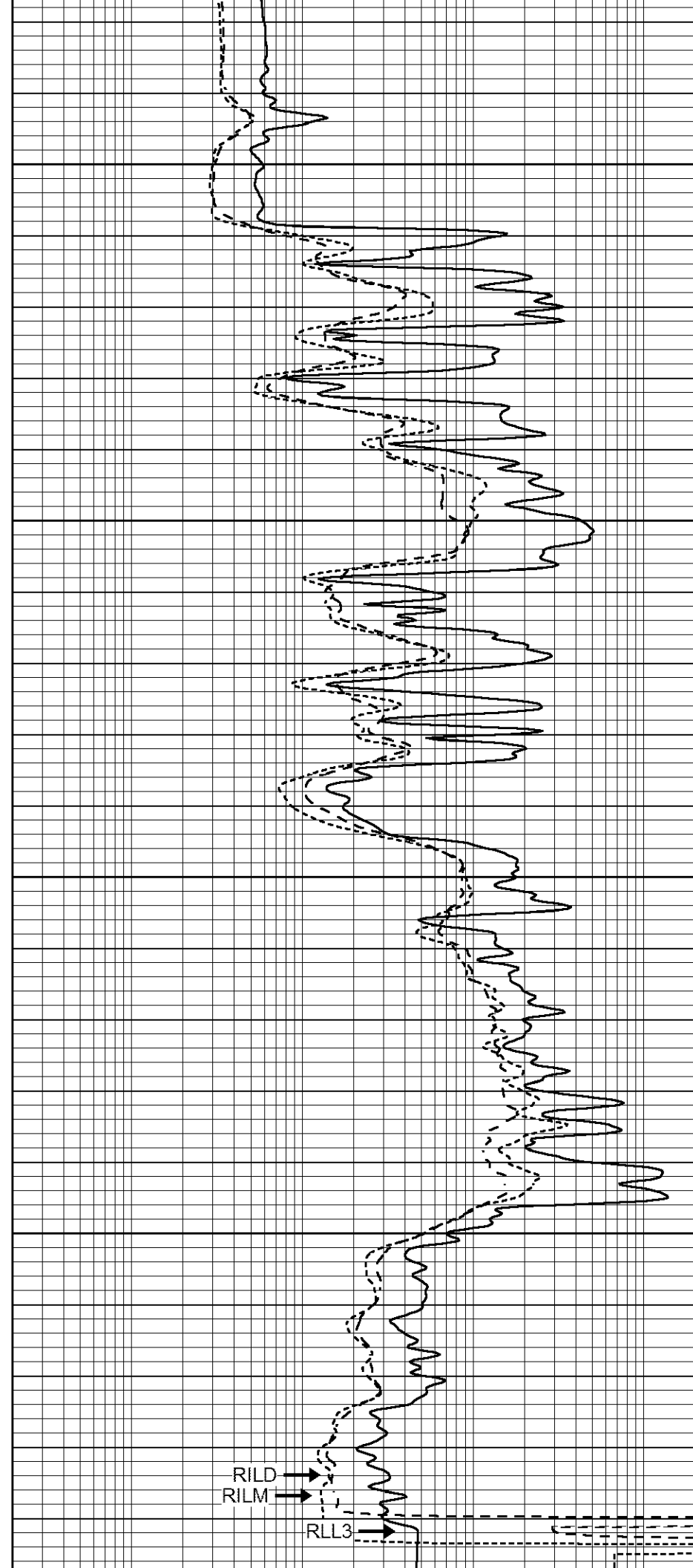
5200

FR GR →

SP →

← RxOrt

LTD 5244



RILD →

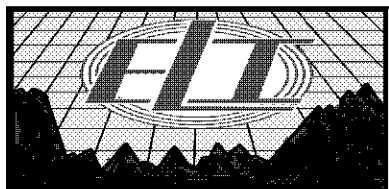
RILM →

RLL3 →

0	GAMMA RAY (GAPI)	150
-100	SP (mV)	100
-250	Rxo/Rt	50

5250

0.2	SHALLOW GUARD (Ohm-m)	2000
0.2	MEDIUM INDUCTION (Ohm-m)	2000
0.2	DEEP INDUCTION (Ohm-m)	2000

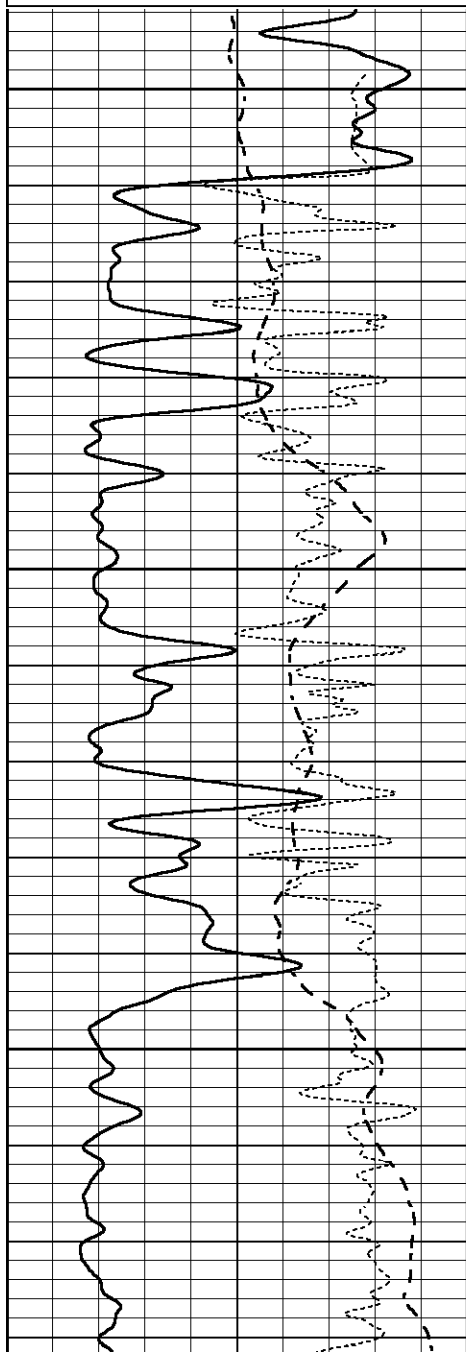


REPEAT SECTION

Database File 6236pe.db
 Dataset Pathname pass2.1
 Presentation Format _dil
 Dataset Creation Fri Feb 11 02:17:54 2022
 Charted by Depth in Feet scaled 1:240

0	GAMMA RAY (GAPI)	150
-100	SP (mV)	100
-250	Rxo/Rt	50

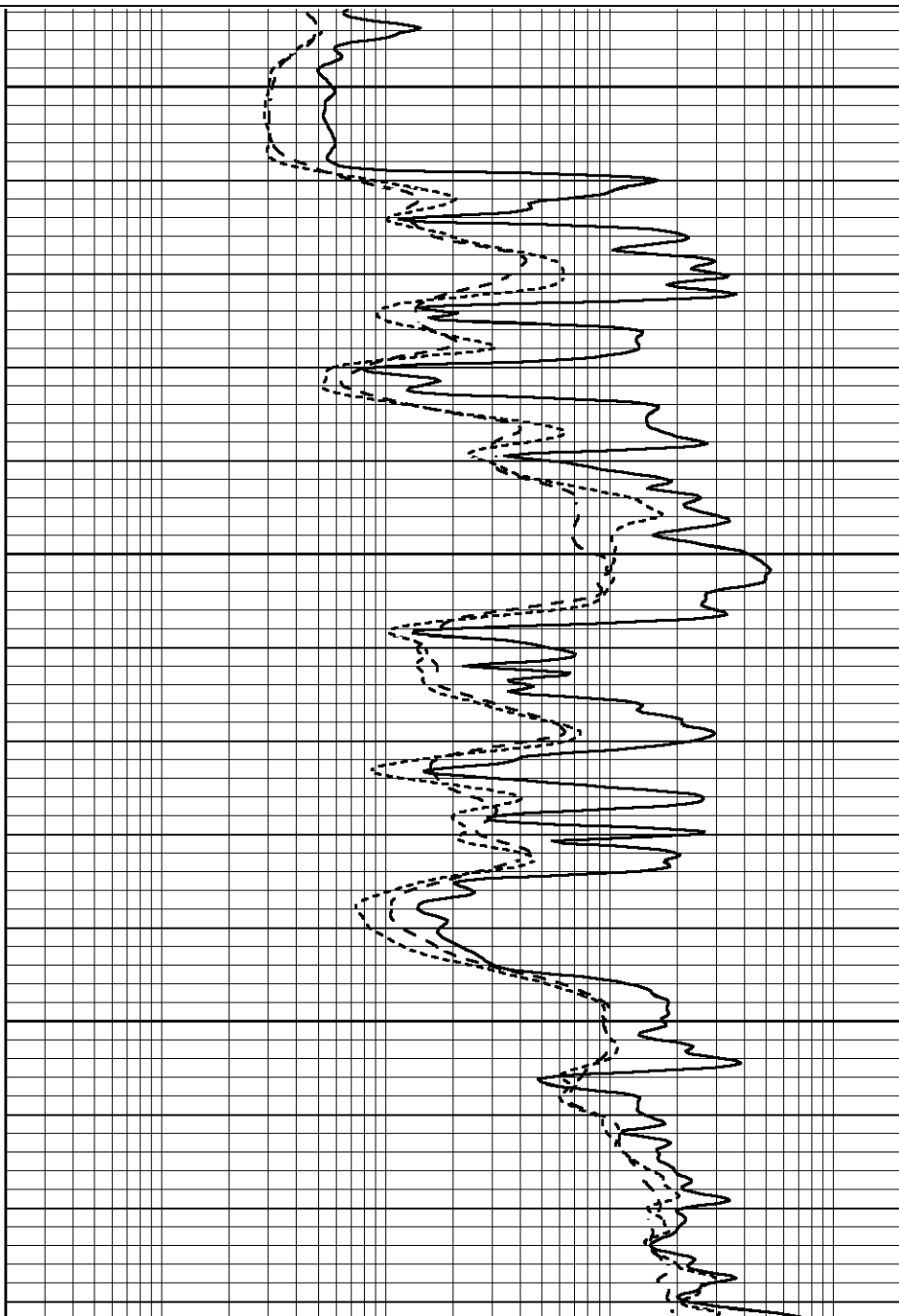
0.2	SHALLOW GUARD (Ohm-m)	2000
0.2	MEDIUM INDUCTION (Ohm-m)	2000
0.2	DEEP INDUCTION (Ohm-m)	2000

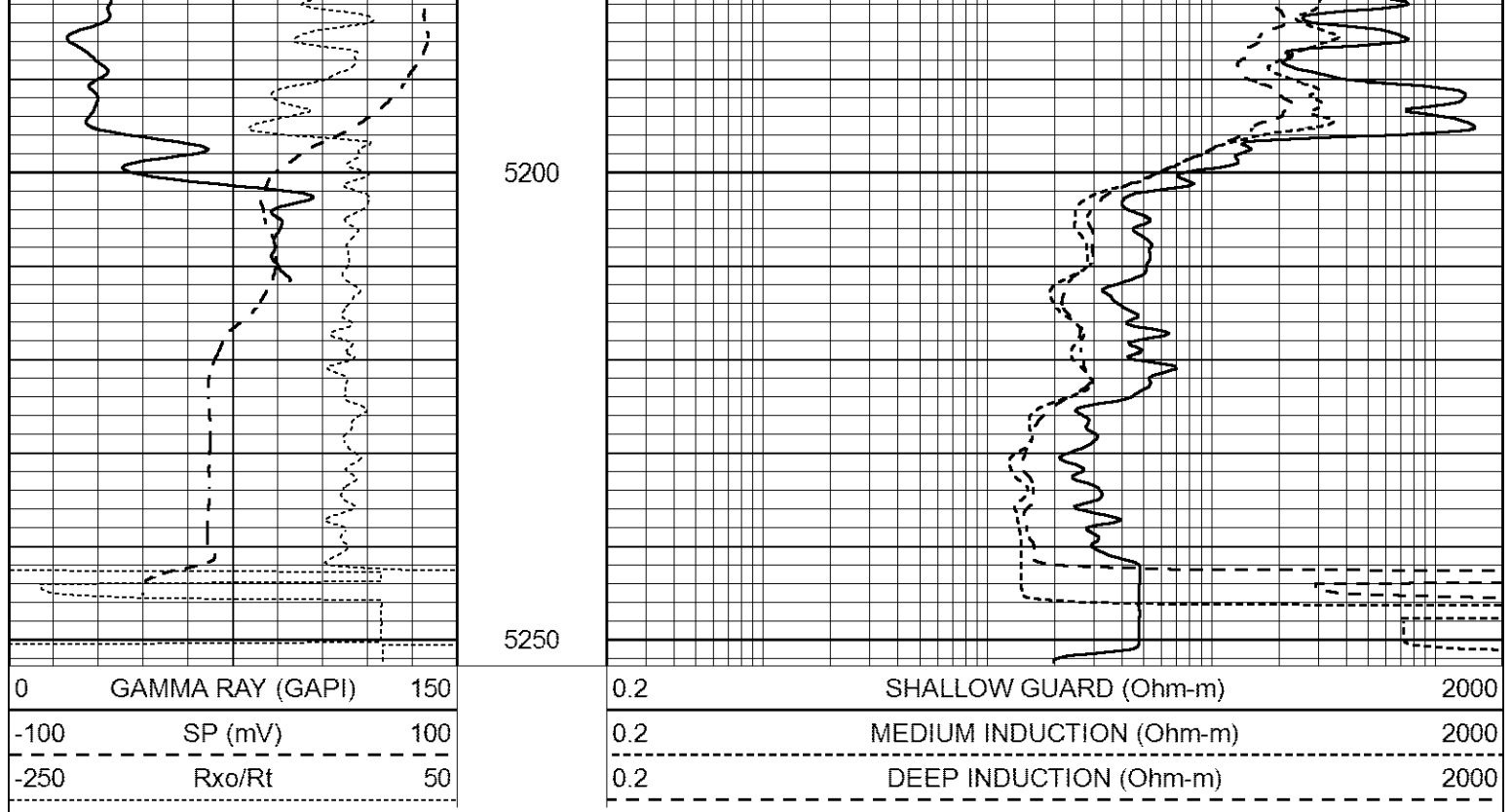


5050

5100

5150





Calibration Report

Database File 6236pe.db
 Dataset Pathname pass3.3
 Dataset Creation Fri Feb 11 03:36:20 2022

Dual Induction Calibration Report

Serial-Model: FW1410-55-Probe
 Surface Cal Performed: Sat Jan 29 11:57:42 2022
 Downhole Cal Performed: Tue Feb 19 11:44:24 2019
 After Survey Verification Performed: Tue Feb 19 11:44:27 2019

Surface Calibration

Loop:	Readings			References			Results	
	Air	Loop	V	Air	Loop	mmho/m	m	b
Deep	0.011	0.656	V	1.000	400.000	mmho/m	618.595	-5.524
Medium	-0.000	0.731	V	1.000	464.000	mmho/m	632.856	1.197
Internal:	Zero	Cal		Zero	Cal		m	b
Deep	0.007	0.649	V	0.000	400.000	mmho/m	623.784	-4.595
Medium	0.004	0.743	V	0.000	464.000	mmho/m	627.284	-2.251

Downhole Calibration

	Readings			References			Results	
	Zero	Cal		Zero	Cal		m'	b'
Deep	-0.824	395.917	mmho/m	-0.976	397.550	mmho/m	1.004	-0.149
Medium	3.565	471.327	mmho/m	3.468	471.590	mmho/m	1.001	-0.099
LL3		7.503	V		1500.000	Ohm-m		
		0.001	V		20.000	Ohm-m		
		-7.481	V		3745.000	mmho-m		

After Survey Verification

Readings	Targets	Results
----------	---------	---------

	Zero	Cal		Zero	Cal		m'	b'
Deep	0.000	0.000	mmho/m	-0.824	395.917	mmho/m	1.000	0.000
Medium	0.000	0.000	mmho/m	3.565	471.327	mmho/m	1.000	0.000
LL3		0.000	Ohm-m		1500.000	Ohm-m		
		0.000	Ohm-m		20.000	Ohm-m		
		0.000	mmho-m		3745.000	mmho-m		

Litho Density Calibration Report
Serial: 140703
Model: V4_10P
Source Number: 74GBq-19

Master Calibration

Performed: Tue Jan 25 14:00:06 2022

	Background	Aluminum	Magnesium		
Window 1	536.63	5366.27	23525.73	cps	
Window 2	42.91	1241.07	5903.94	cps	
Window 4	234.22	1197.63	5056.39	cps	
Window 5	470.91	9159.65	17426.67	cps	
Window 6	30.83	648.89	1219.18	cps	
Window 8	256.26	4659.94	9003.51	cps	
Bulk Density	-	2.6020	1.6830	g/cc	
Pe	-	3.0000	2.5070	b/e	
LS Alpha:	: -1.8361	SS Alpha:	: -0.7848	LS CPE:	: 1.0879
LS Beta:	: 117533.3616	SS Beta:	: 35294.5337	SS CPE:	: 5.9752

Before Survey Background Counts Verification

Performed: Wed Dec 31 18:00:00 1969

Window 1	0.00	cps
Window 2	0.00	cps
Window 4	0.00	cps
Window 5	0.00	cps
Window 6	0.00	cps
Window 8	0.00	cps

After Survey Background Counts Verification

Performed: Wed Dec 31 18:00:00 1969

Window 1	0.00	cps
Window 2	0.00	cps
Window 4	0.00	cps
Window 5	0.00	cps
Window 6	0.00	cps
Window 8	0.00	cps

Lithodensity Caliper Calibration

Performed: Tue Jan 25 14:00:06 2022

Results	Readings	References (in)		Gain	Offset
Low	High	Low	High		
10332.0	13596.9	8.0	14.0	0.0	-11.0

Before Survey Caliper Verification

Performed:

	Reference	Reading
Caliper (in)	_____	_____

After Survey Caliper Verification

Performed:

Reference

Reading

Caliper (in)

Compensated Neutron Calibration Report

Serial Number:
Tool Model:

080621PMC
NABORS

PRE-SURVEY VERIFICATION

Detector	Readings	Measured	Target
Short Space	cps		
Long Space	cps	pu	pu

POST-SURVEY VERIFICATION

Detector	Readings	Measured	Target
Short Space	cps		
Long Space	cps	pu	pu

Gamma Ray Calibration Report

Serial Number:	7	
Tool Model:	Probe1	
Performed:	Tue Jan 19 17:50:08 2021	
Calibrator Value:	1.0	GAPI
Background Reading:	0.0	cps
Calibrator Reading:	1.0	cps
Sensitivity:	0.5300	GAPI/cps