



SONIC LOG

Company STELBAR OIL CORPORATION, INC.  
 Well BPC TRUST #1-10  
 Field UNNAMED  
 County WALLACE State KANSAS

Location: API #: 15-199-20456-0000  
 548' FSL & 343' FWL  
 SEC 10 TWP 14 RGE 41  
 Permanent Datum GROUND LEVEL Elevation 3761  
 Log Measured From KELLY BUSHING 8' A.G.L.  
 Drilling Measured From KELLY BUSHING  
 Other Services CNL/CDL/PE DIL/MEL  
 Elevation K.B. 3769 D.F. 3767 G.L. 3761

Date	2/10/22
Run Number	TWO
Depth Driller	5249
Depth Logger	5244
Bottom Logged Interval	5234
Top Log Interval	500
Casing Driller	8 5/8" @ 556
Casing Logger	556
Bit Size	7 7/8
Type Fluid in Hole	CHEMICAL MUD
Density / Viscosity	9.0/59
PH / Fluid Loss	9.5/8.0
Source of Sample	FLOWLINE
Rm @ Meas. Temp	1.5@62F
Rmt @ Meas. Temp	1.1@62F
Rmc @ Meas. Temp	1.8@62F
Source of Rmf / Rmc	MEASUREMENT
Rm @ BHT	.73@127F
Time Circulation Stopped	2 HOURS
Time Logger on Bottom	////
Maximum Recorded Temperature	127F
Equipment Number	3802
Location	HAYS, KANSAS
Recorded By	JASON CAPPELLUCCI
Witnessed By	DAVE GOLDAK
	TJ DREILING

<<< Fold Here >>>

All interpretations are opinions based on inferences from electrical or other measurements and we cannot and do not guarantee the accuracy or correctness of any interpretation, and we shall not, except in the case of gross or willful negligence on our part, be liable or responsible for any loss, costs, damages, or expenses incurred or sustained by anyone resulting from any interpretation made by any of our officers, agents or employees. These interpretations are also subject to our general terms and conditions set out in our current Price Schedule.

Comments

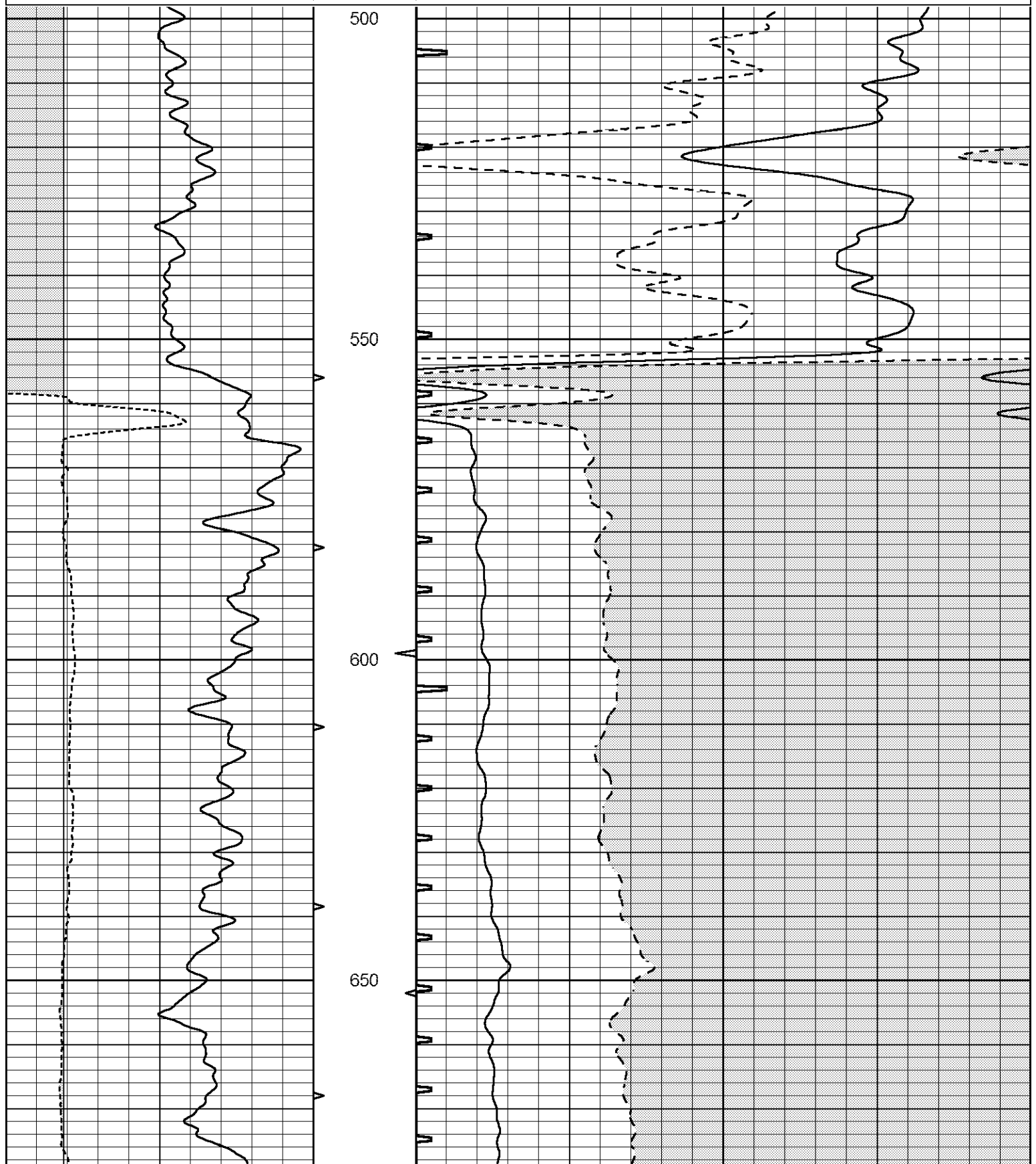
THANK YOU FOR USING ELI WIRELINE SERVICES, HAYS, KS. ( 785 ) 628-6395  
 DIRECTIONS  
 -SHARON SPRINGS KS SOUTH ON HIGHWAY 27 TO JACKRABBIT ROAD,  
 -WEST 7 MILES, -NORTH 2 MILES

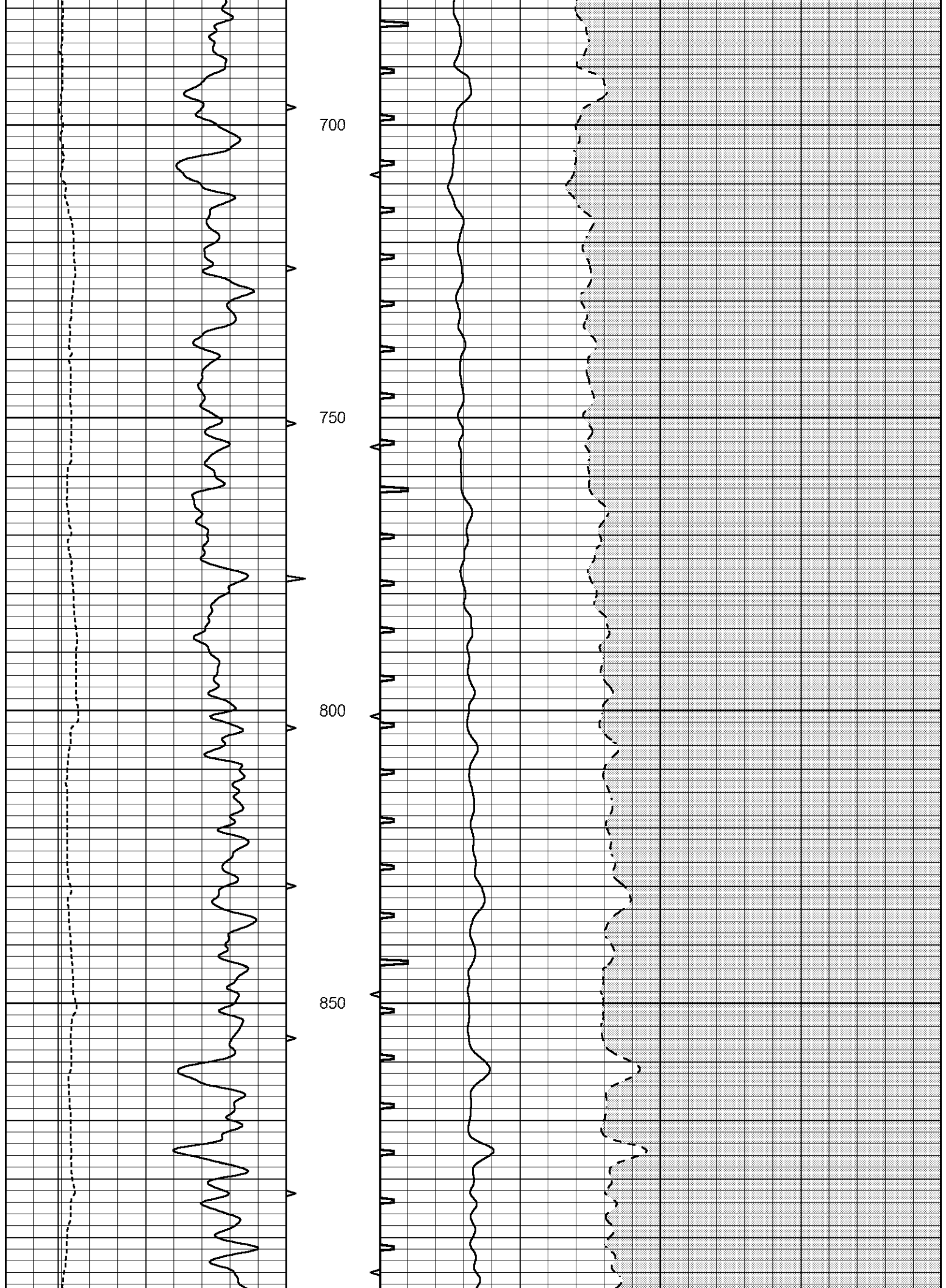


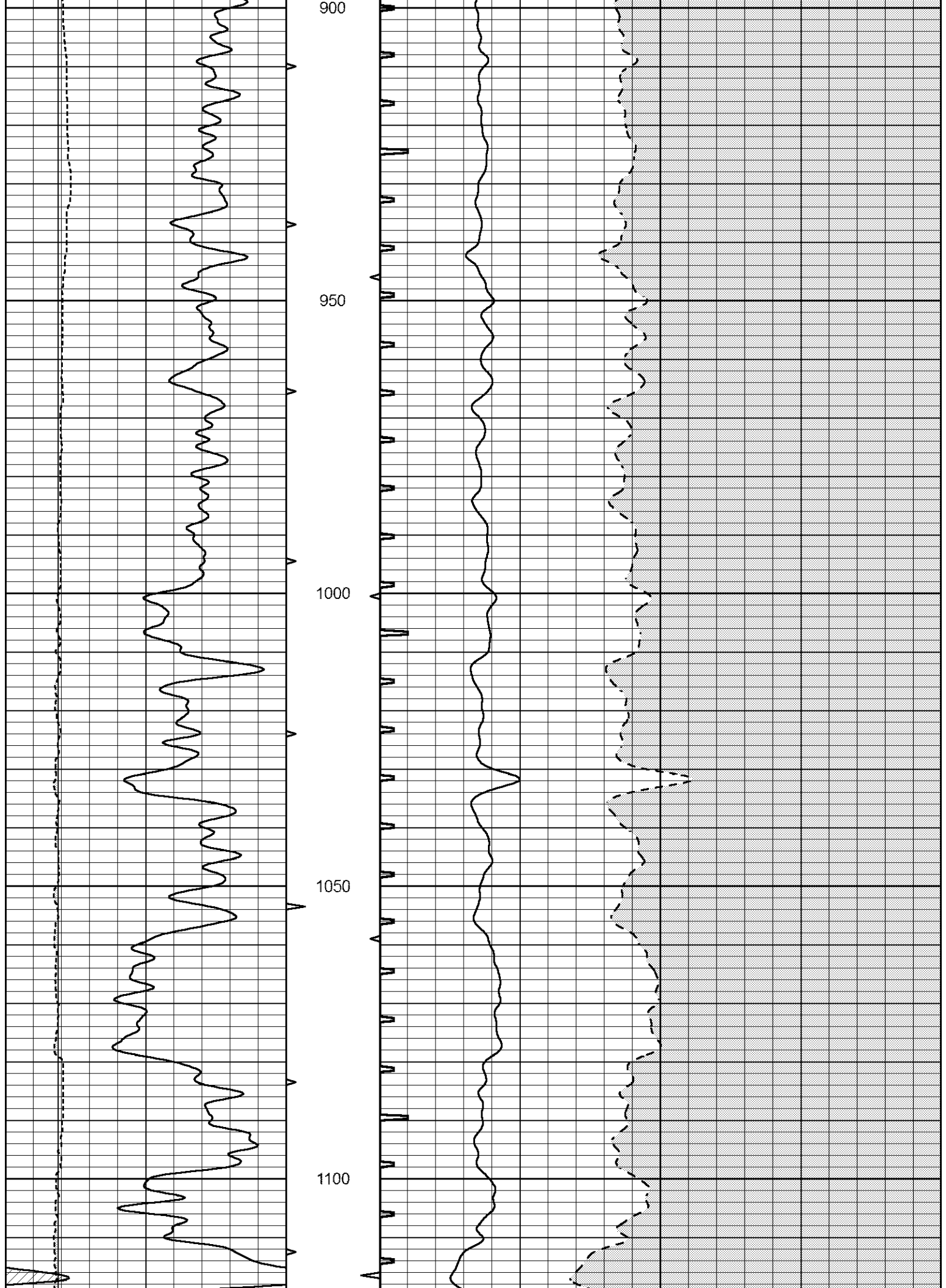
MAIN SECTION

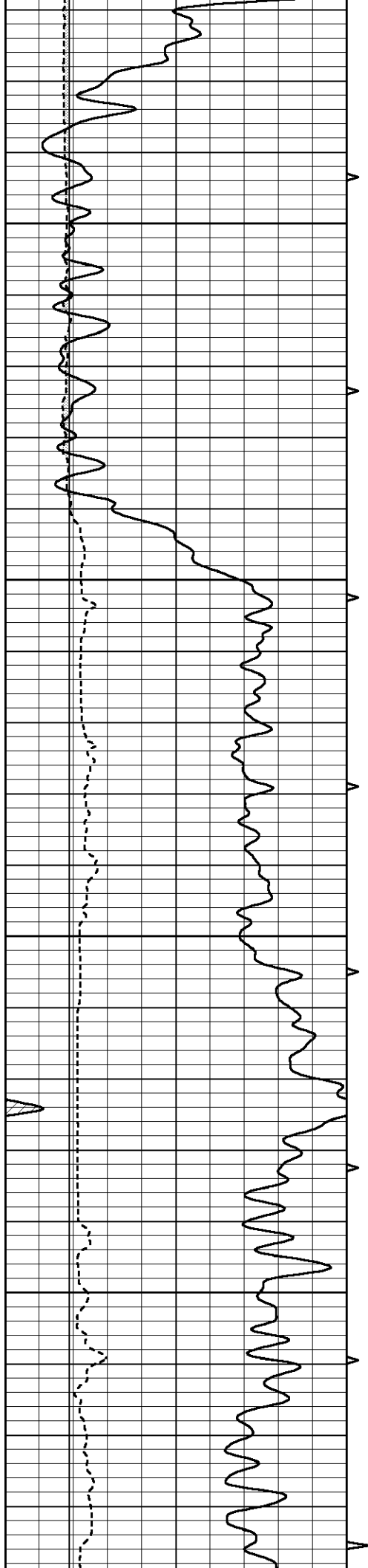
Database File 6236pe.db  
 Dataset Pathname pass6.2  
 Presentation Format \_slt  
 Dataset Creation Fri Feb 11 05:34:02 2022  
 Charted by Depth in Feet scaled 1:240

0	GAMMA RAY (GAPI)	150	ABHV	140	DELTA TIME (usec/ft)	40	
6	CALIPER (in)	16	10 (ft3)	0	30	SONIC POROSITY (pu)	-10
			TBHV	0	ITT (msec)	20	
			0 (ft3)	10			







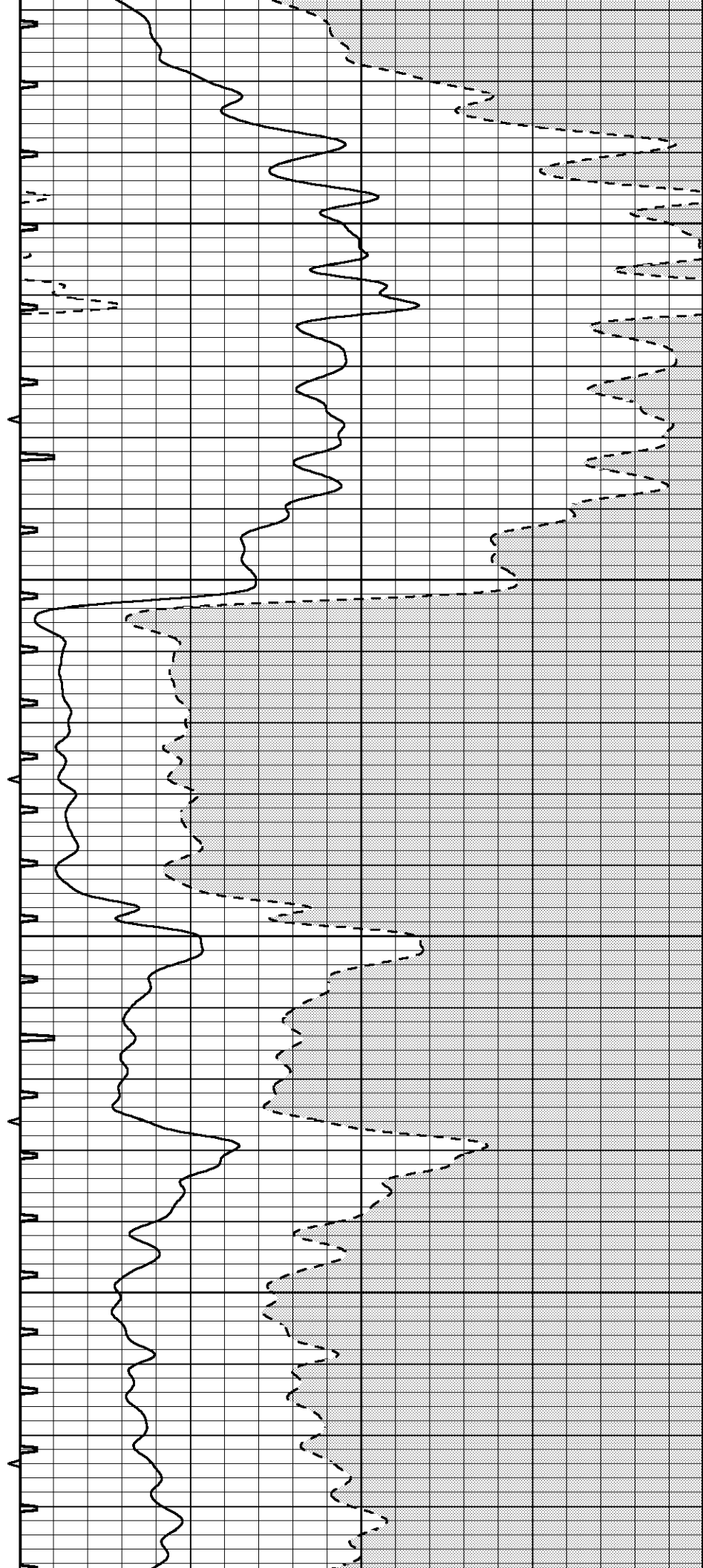


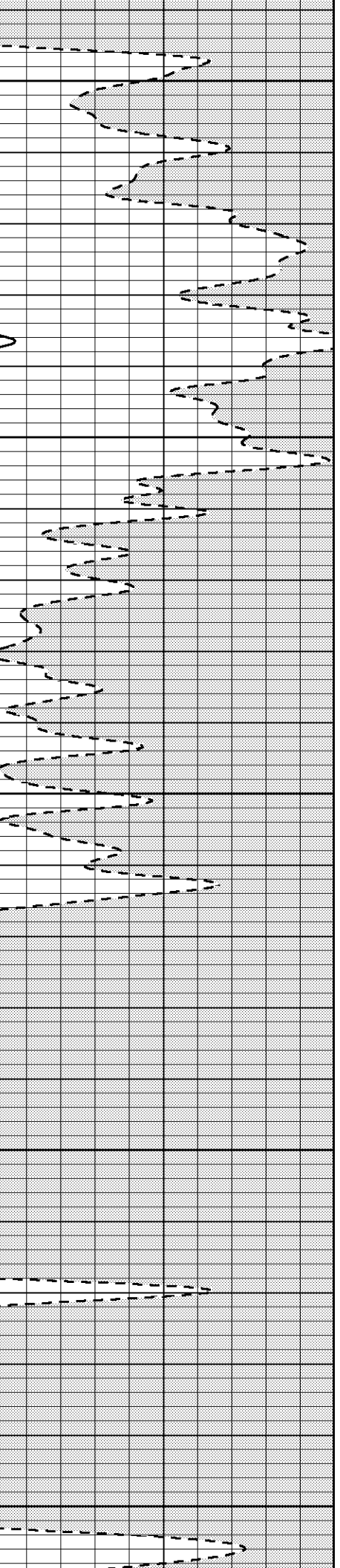
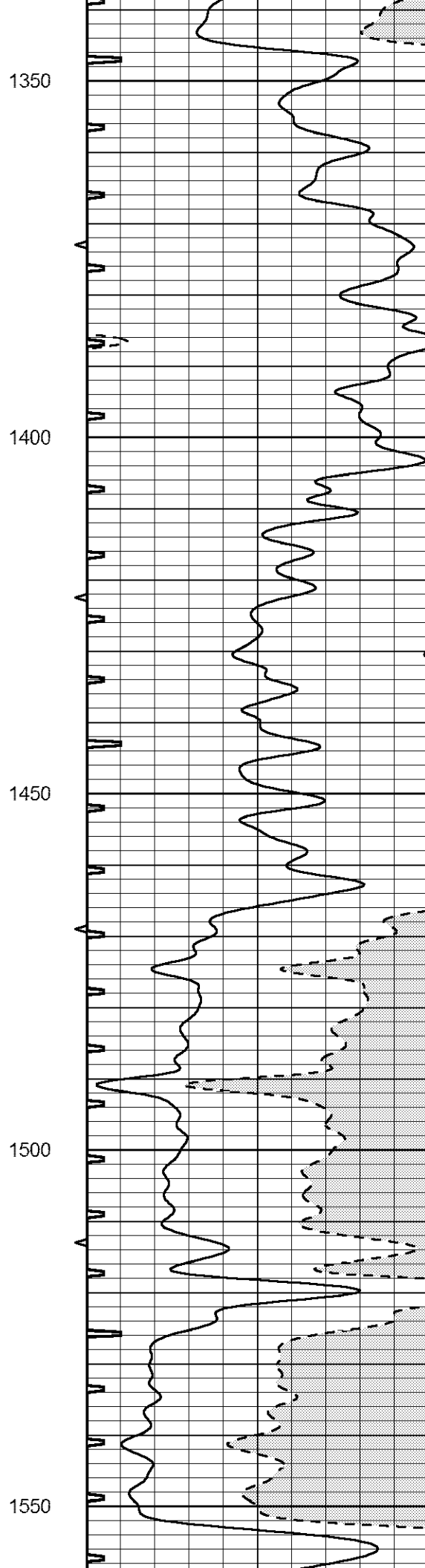
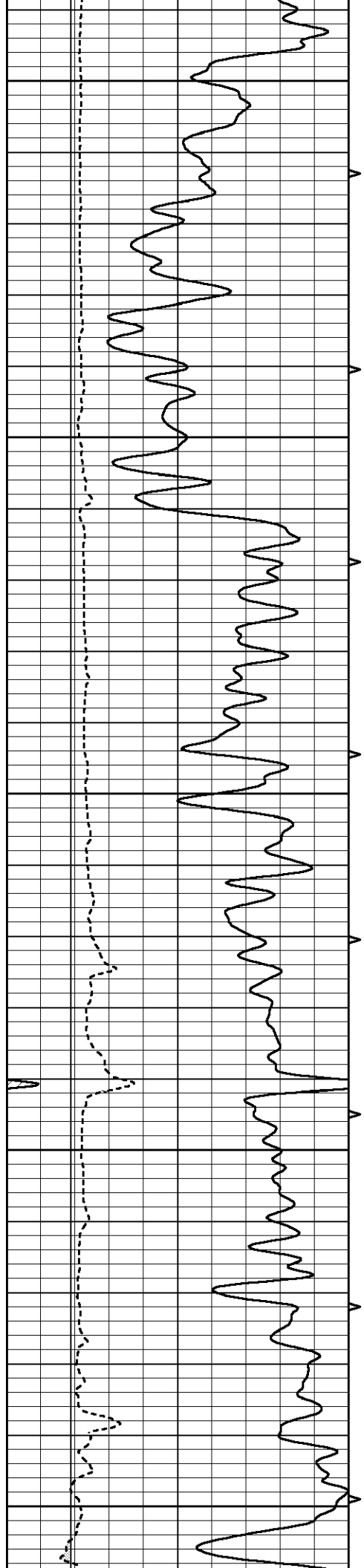
1150

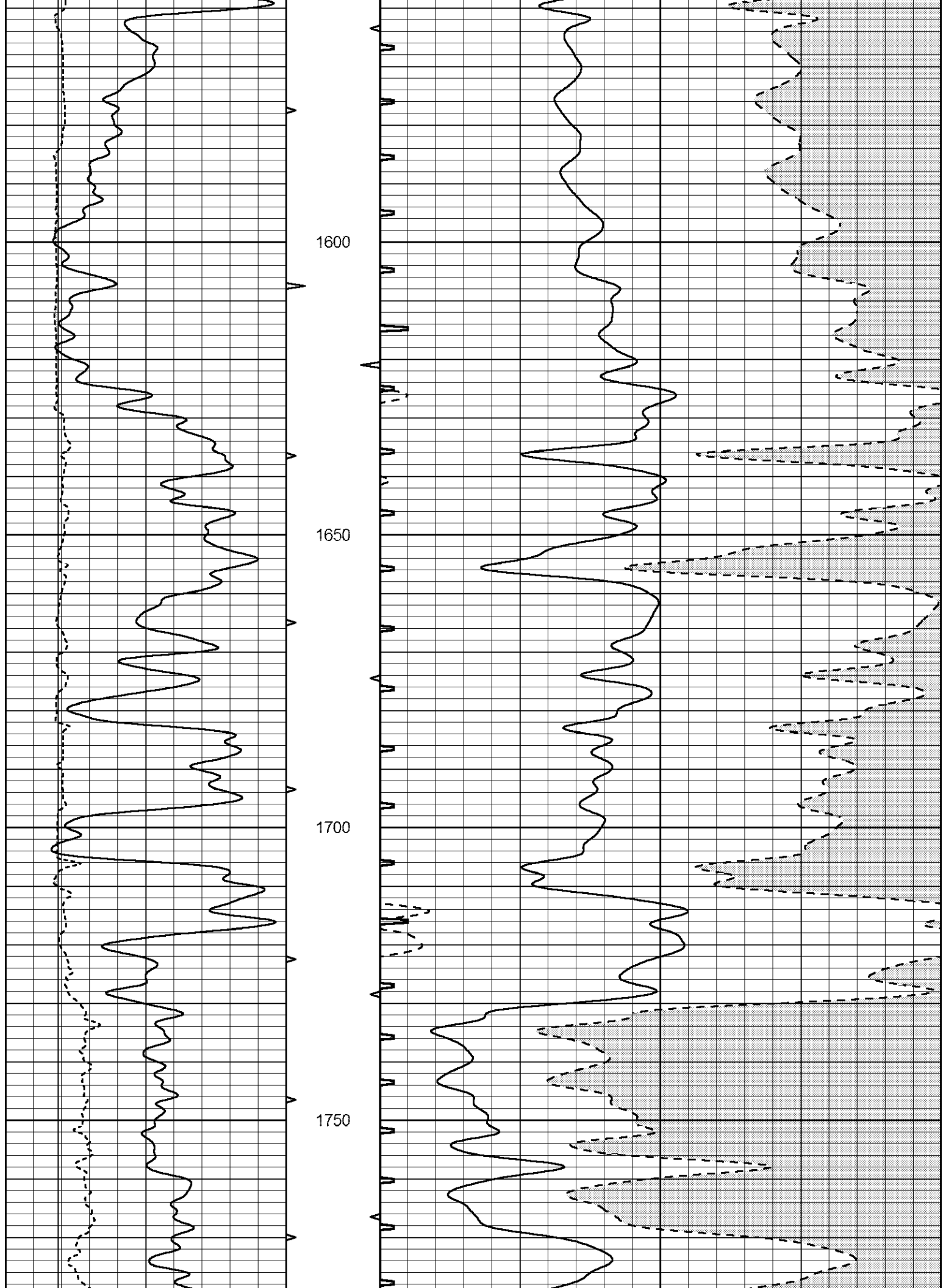
1200

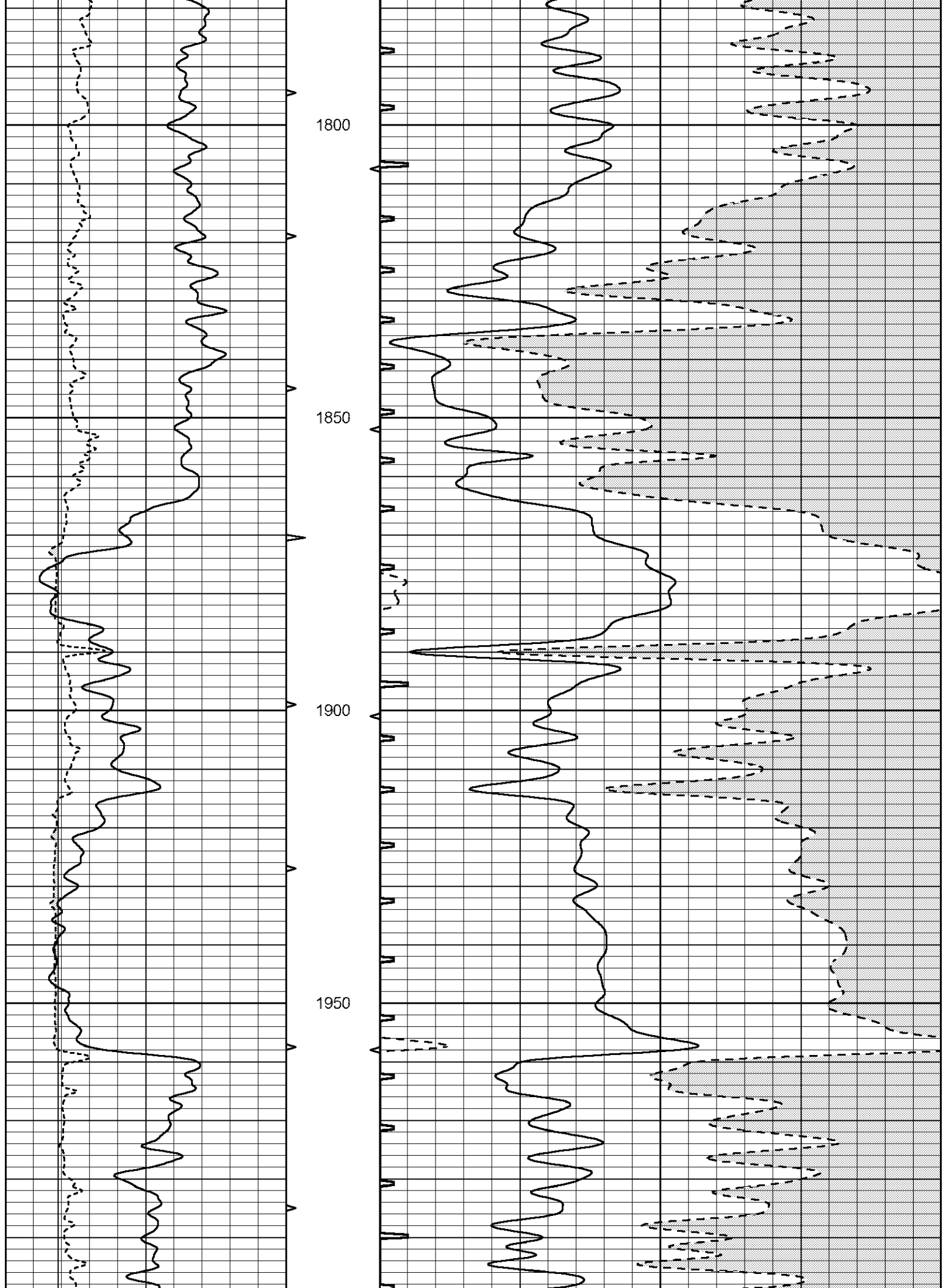
1250

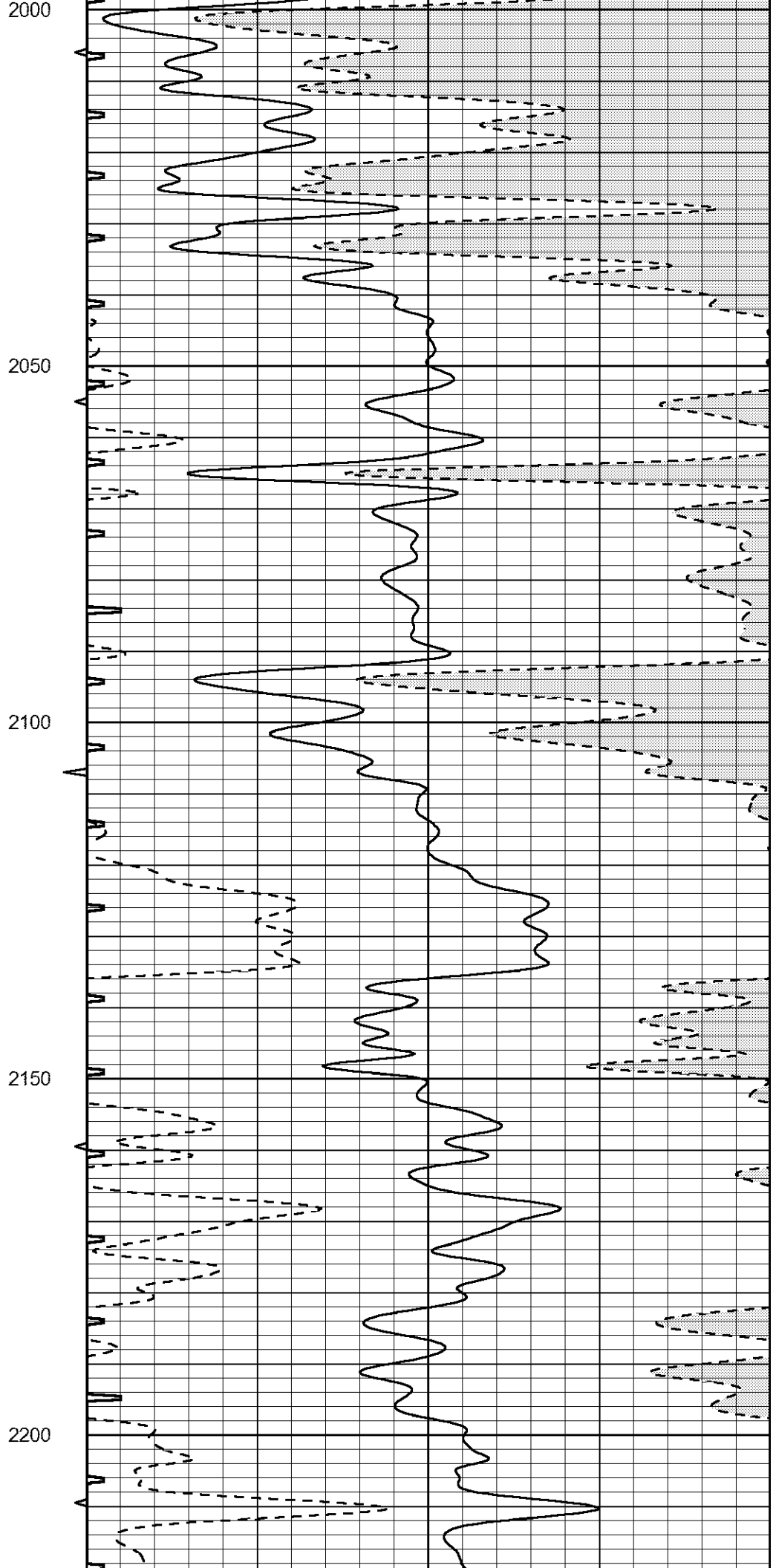
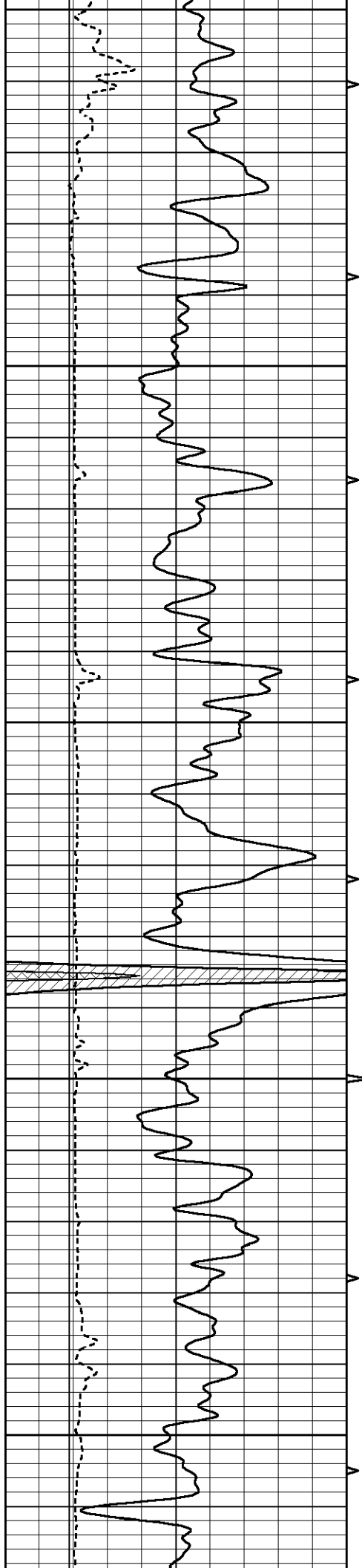
1300

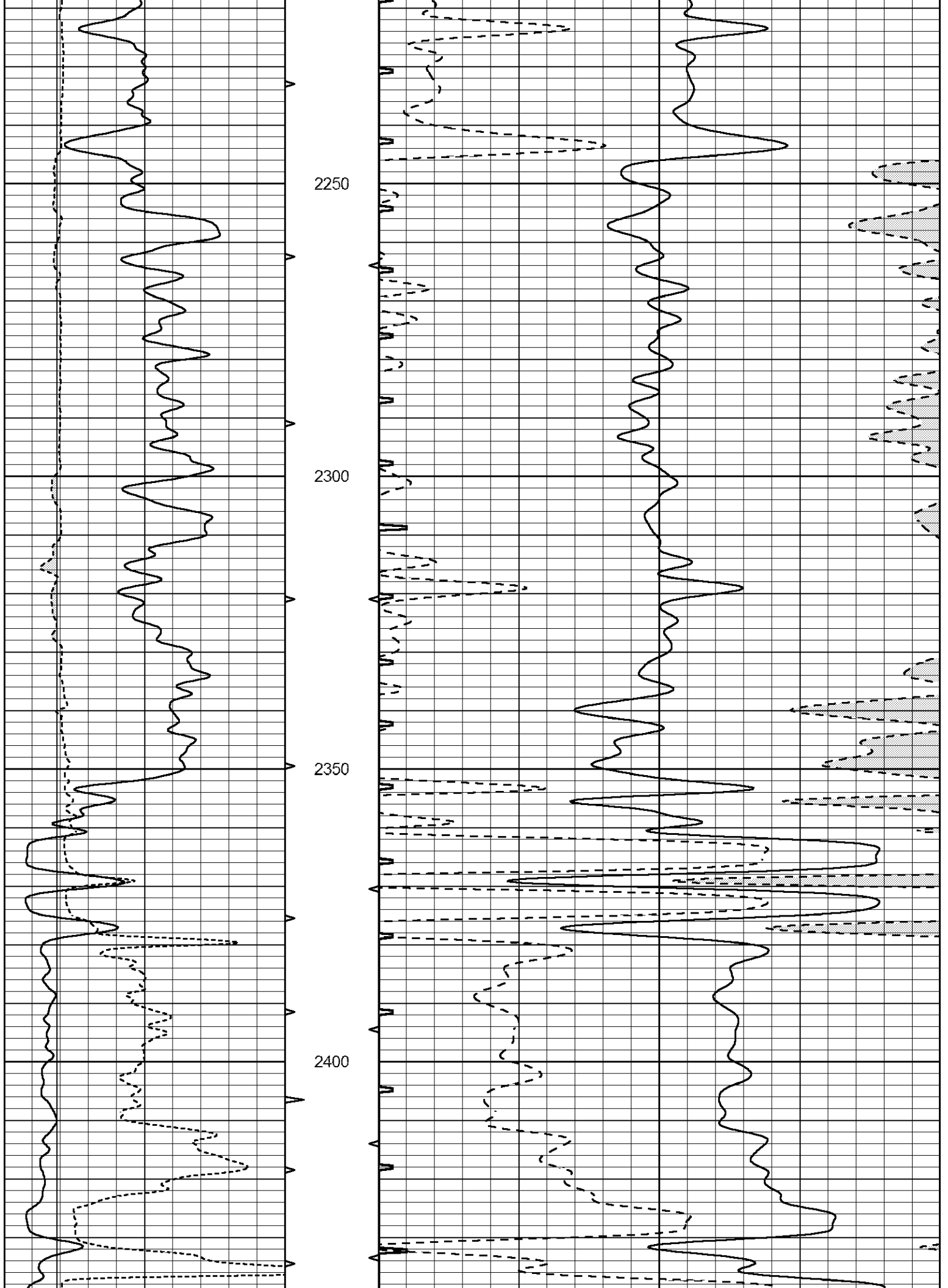


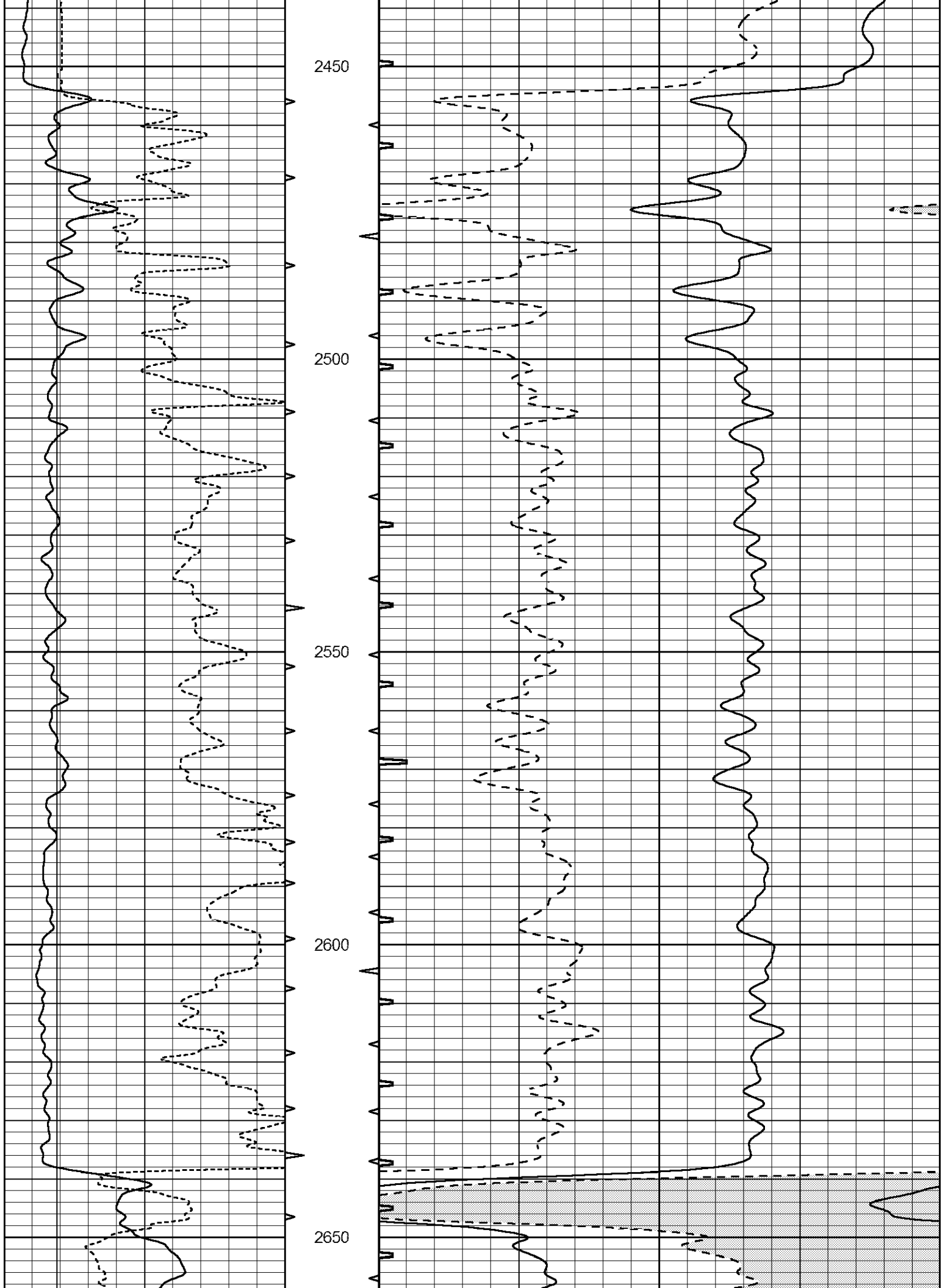


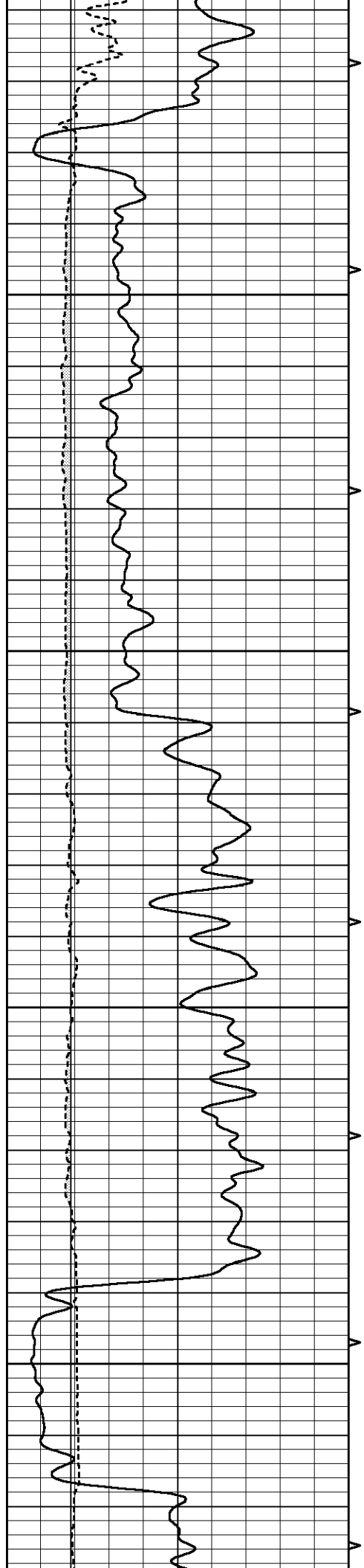










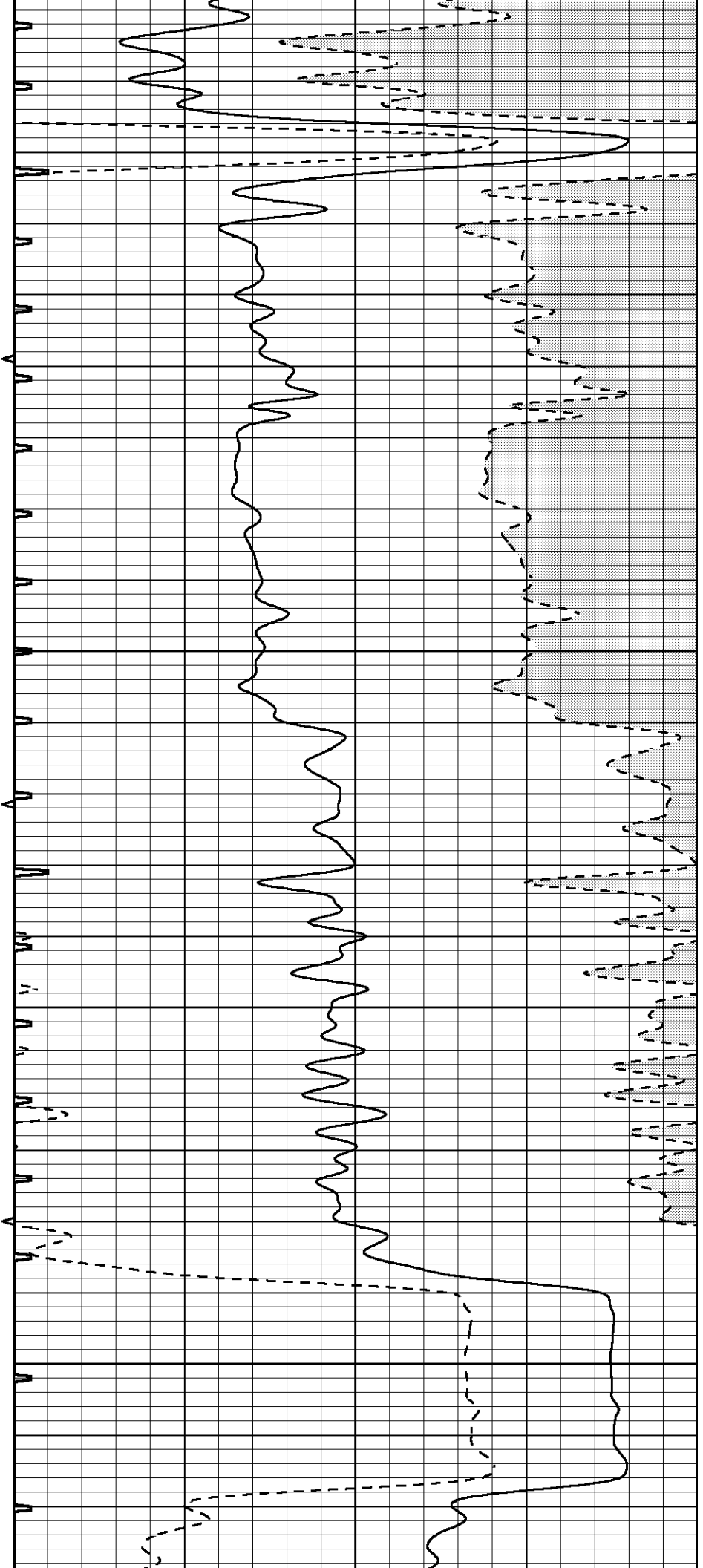


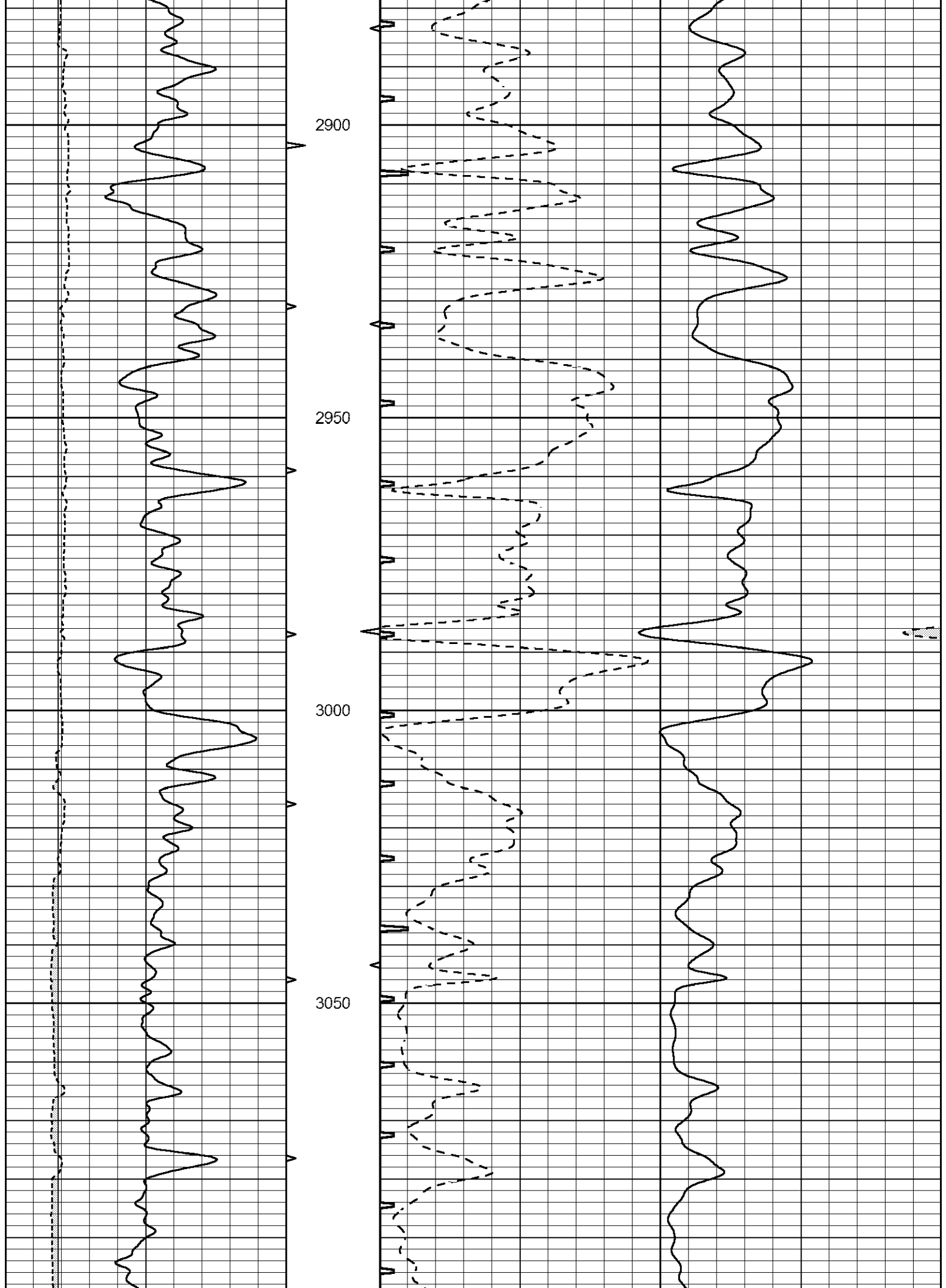
2700

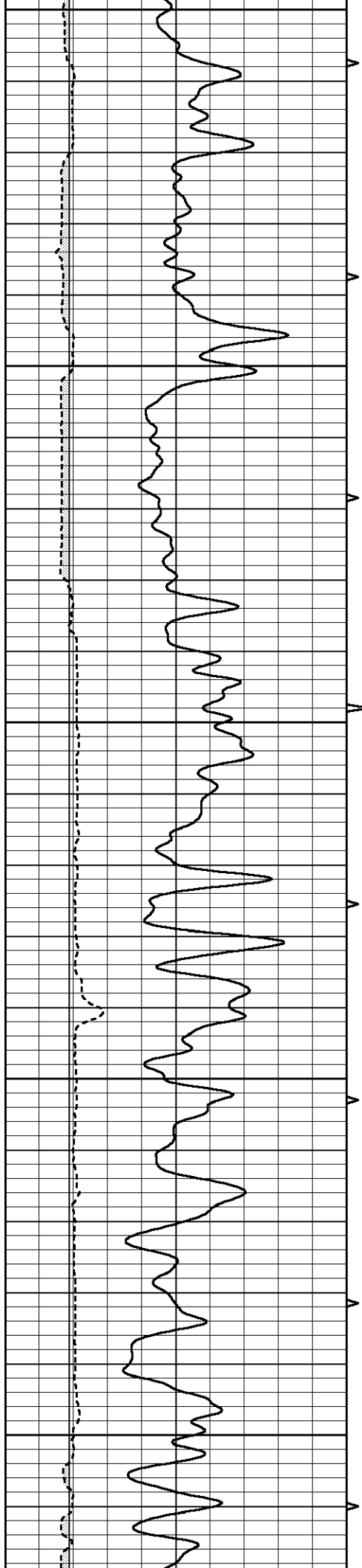
2750

2800

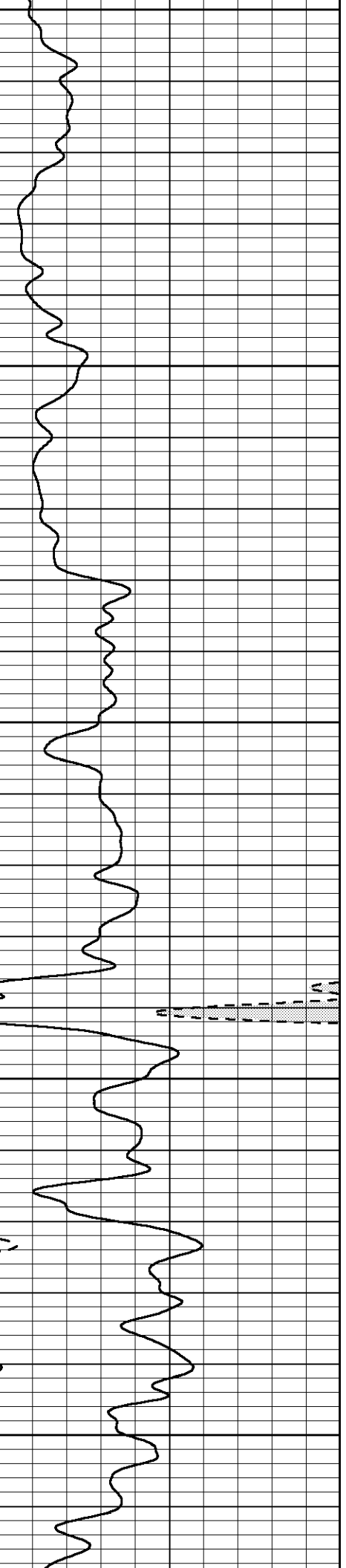
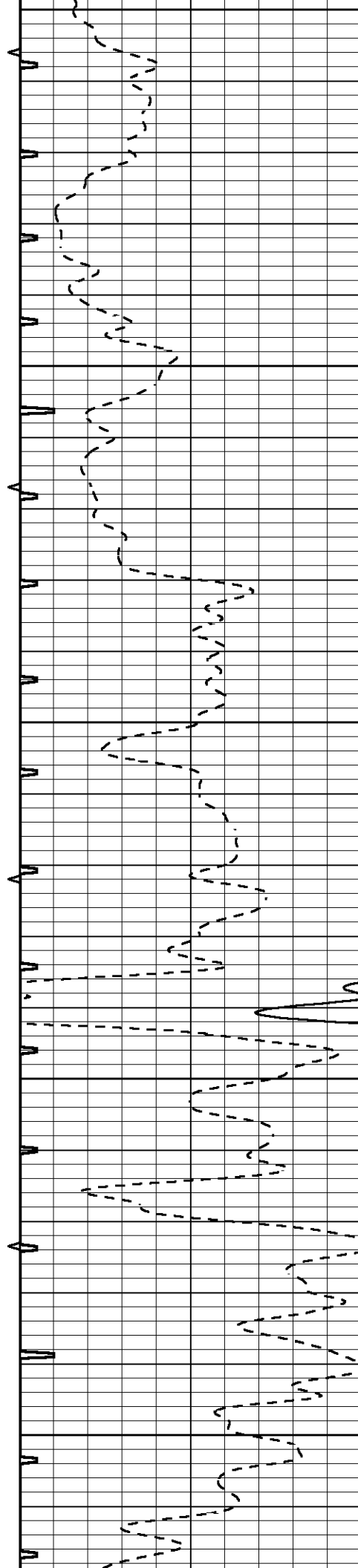
2850

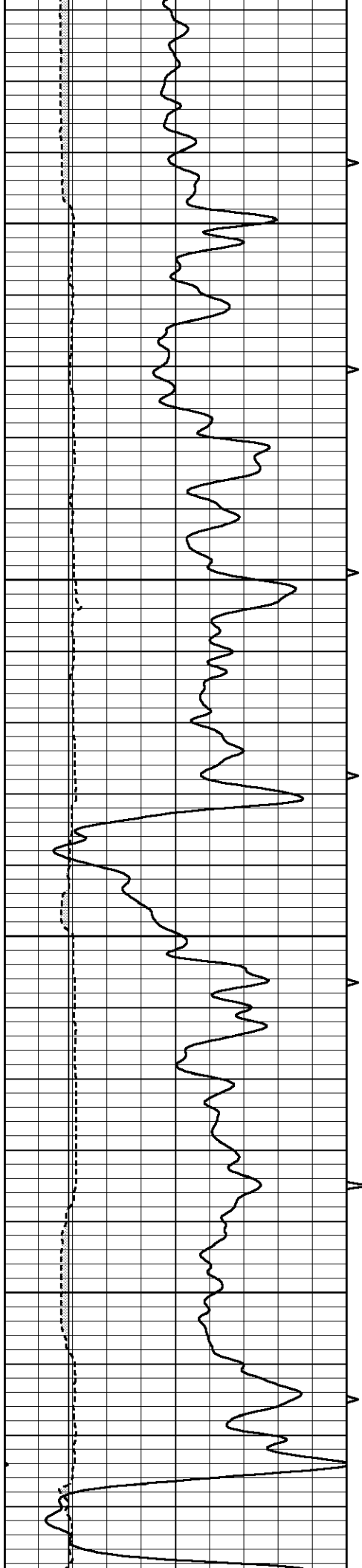






3100  
3150  
3200  
3250  
3300



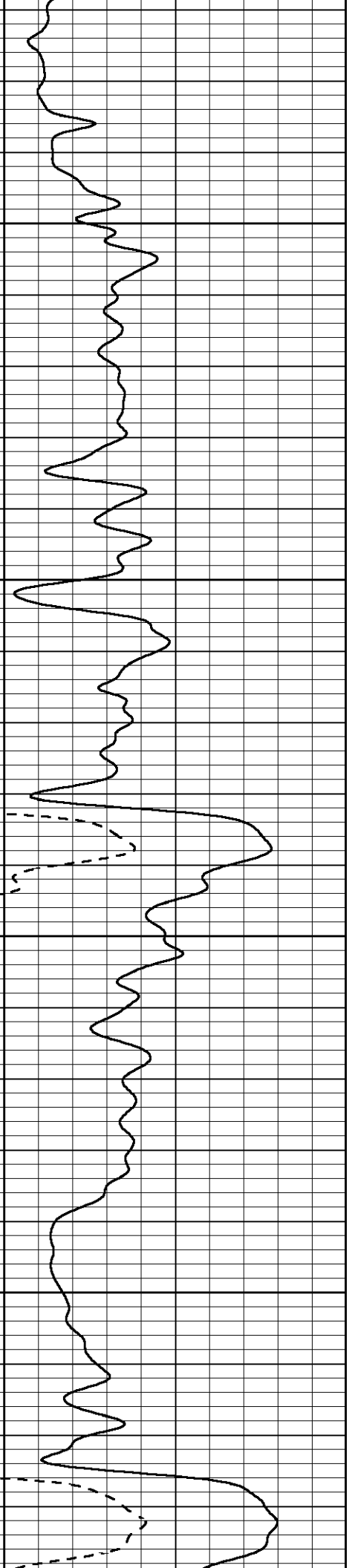
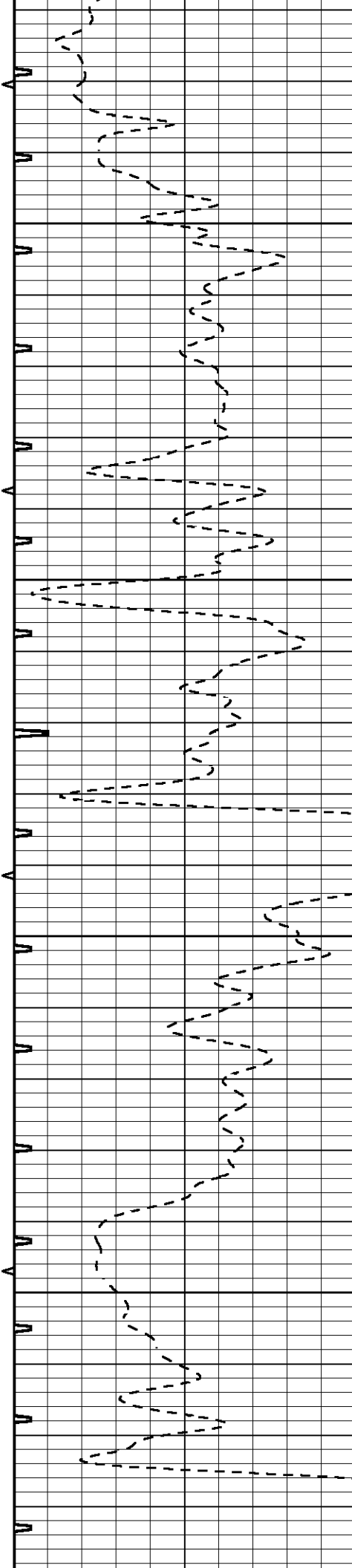


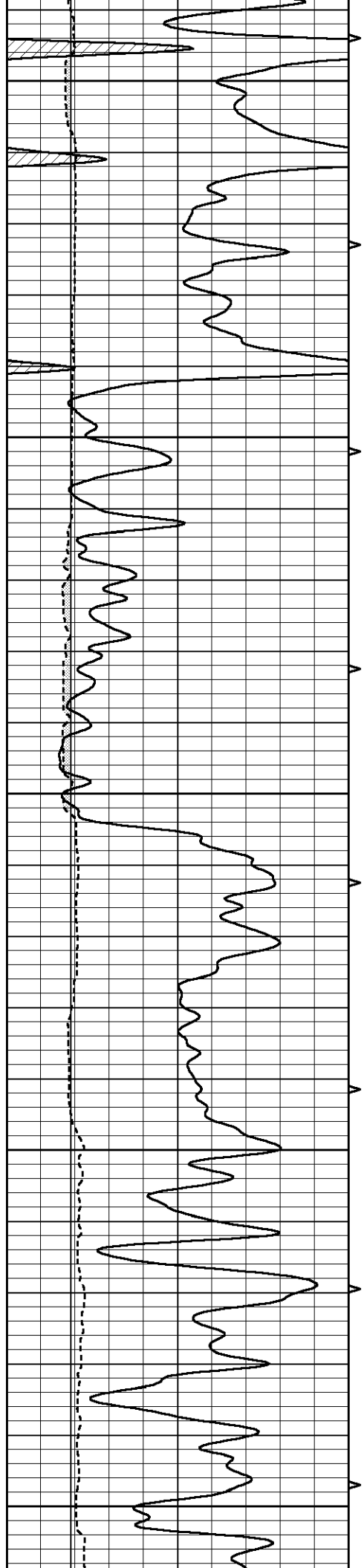
3350

3400

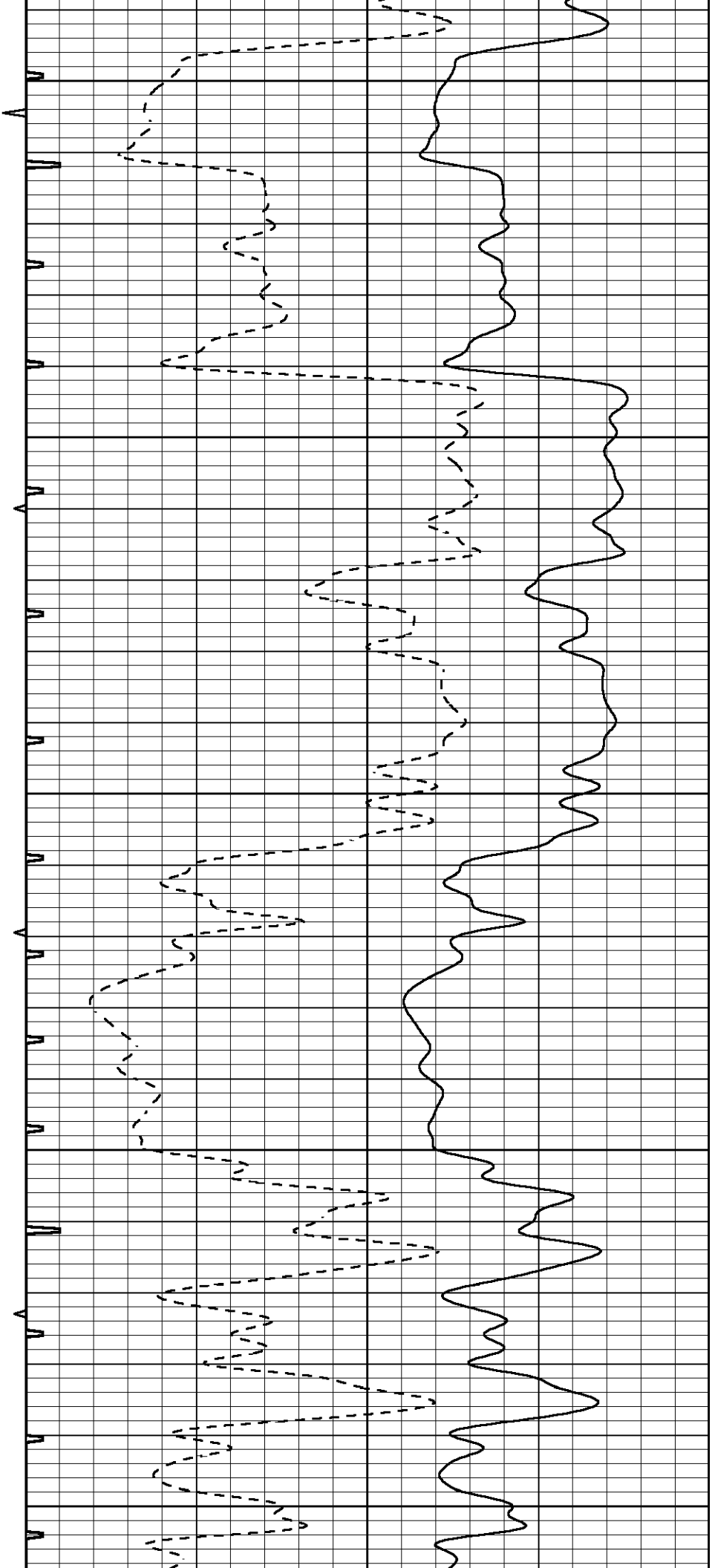
3450

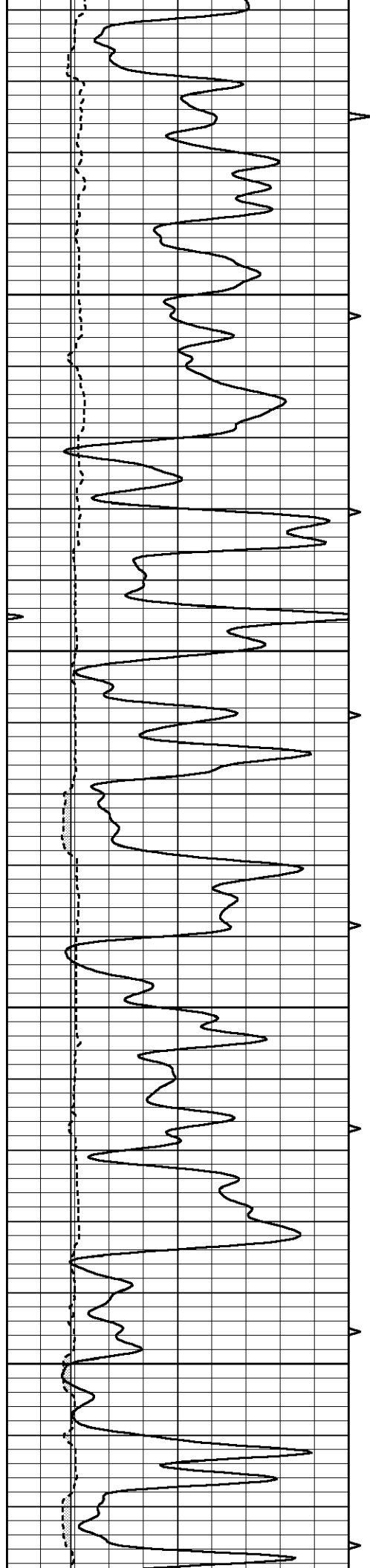
3500





3550  
3600  
3650  
3700  
3750



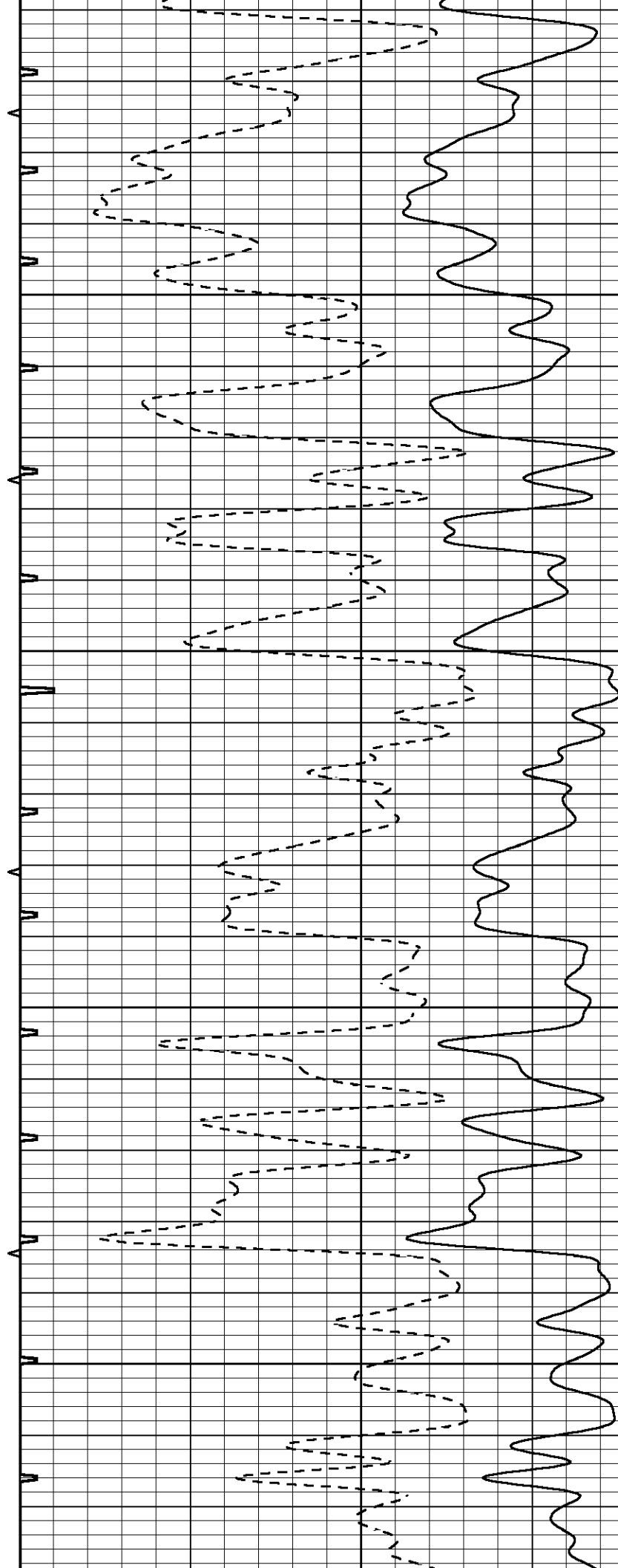


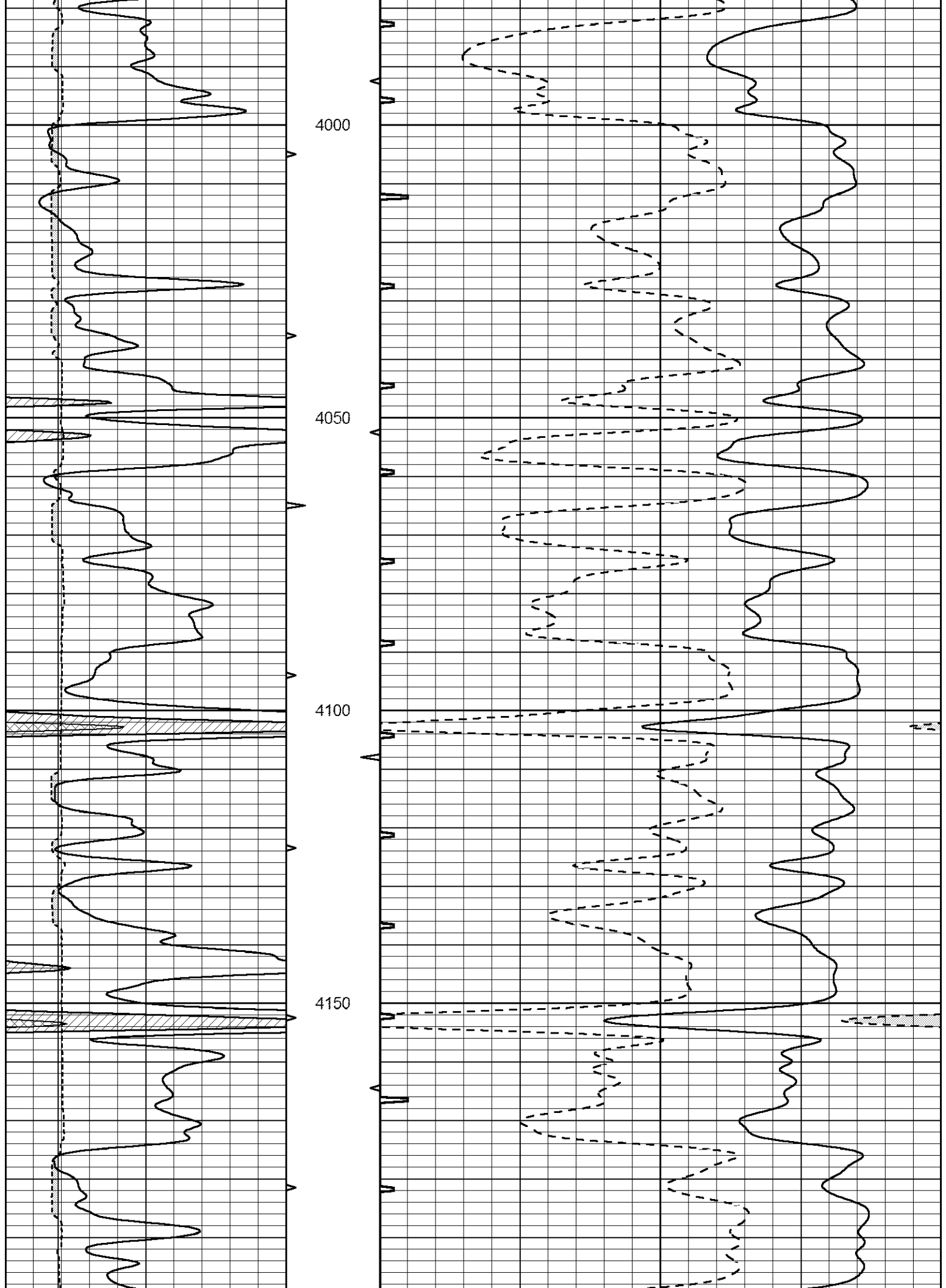
3800

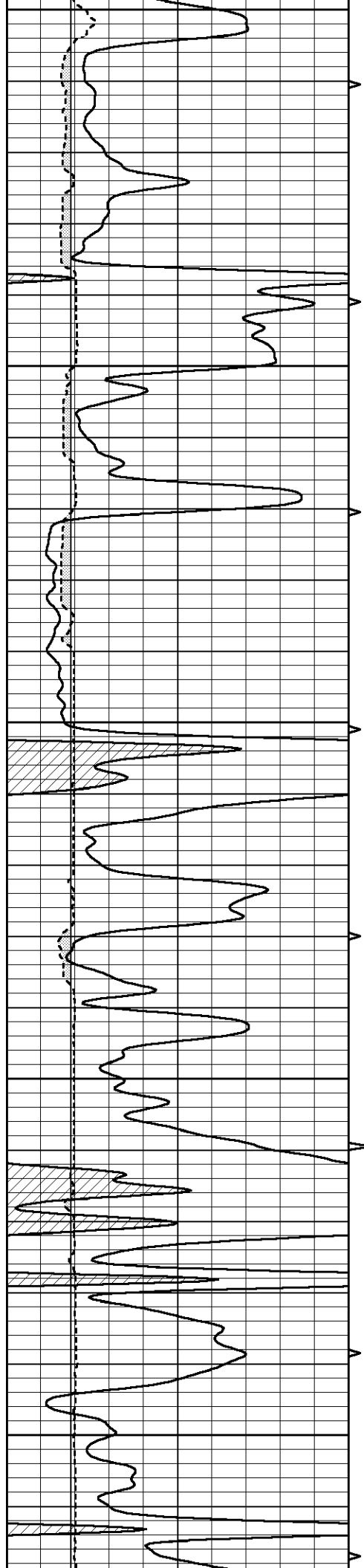
3850

3900

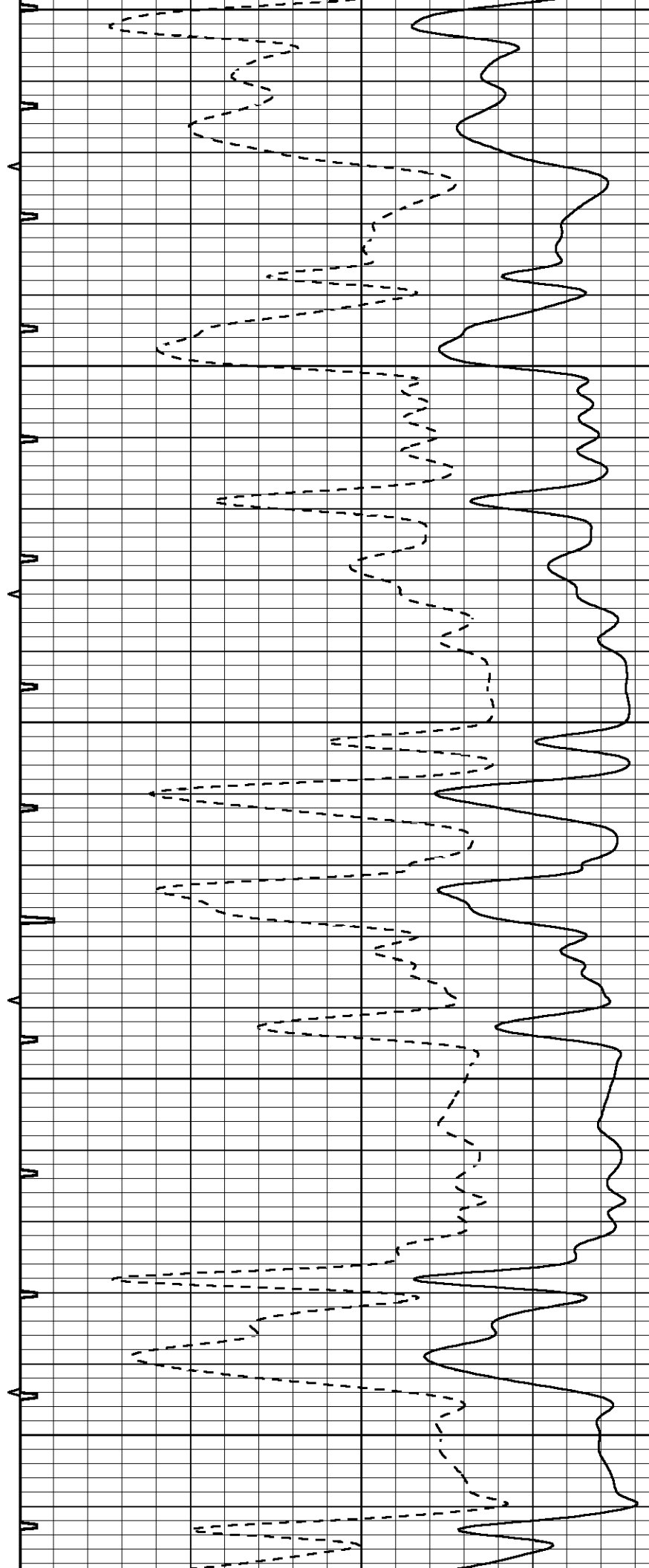
3950

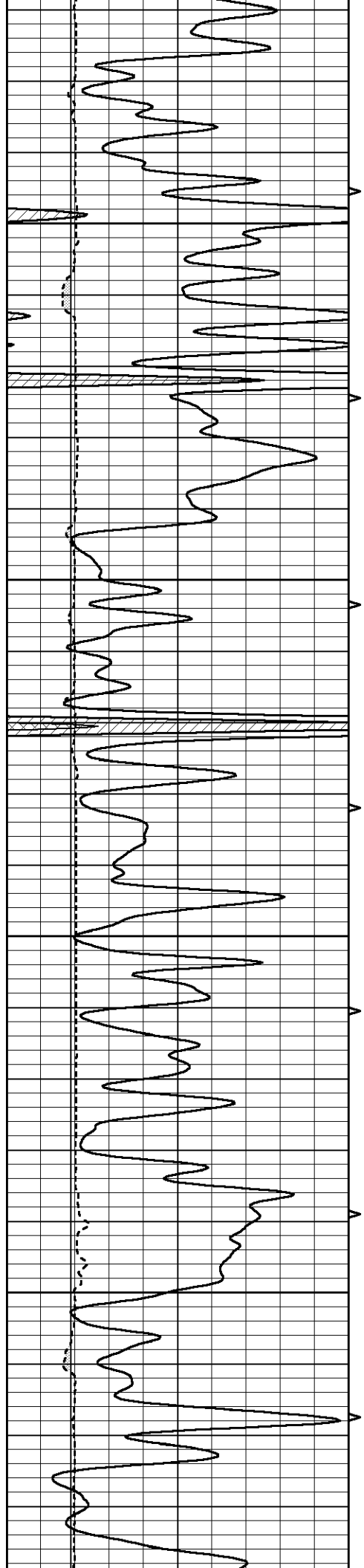






4200  
4250  
4300  
4350  
4400



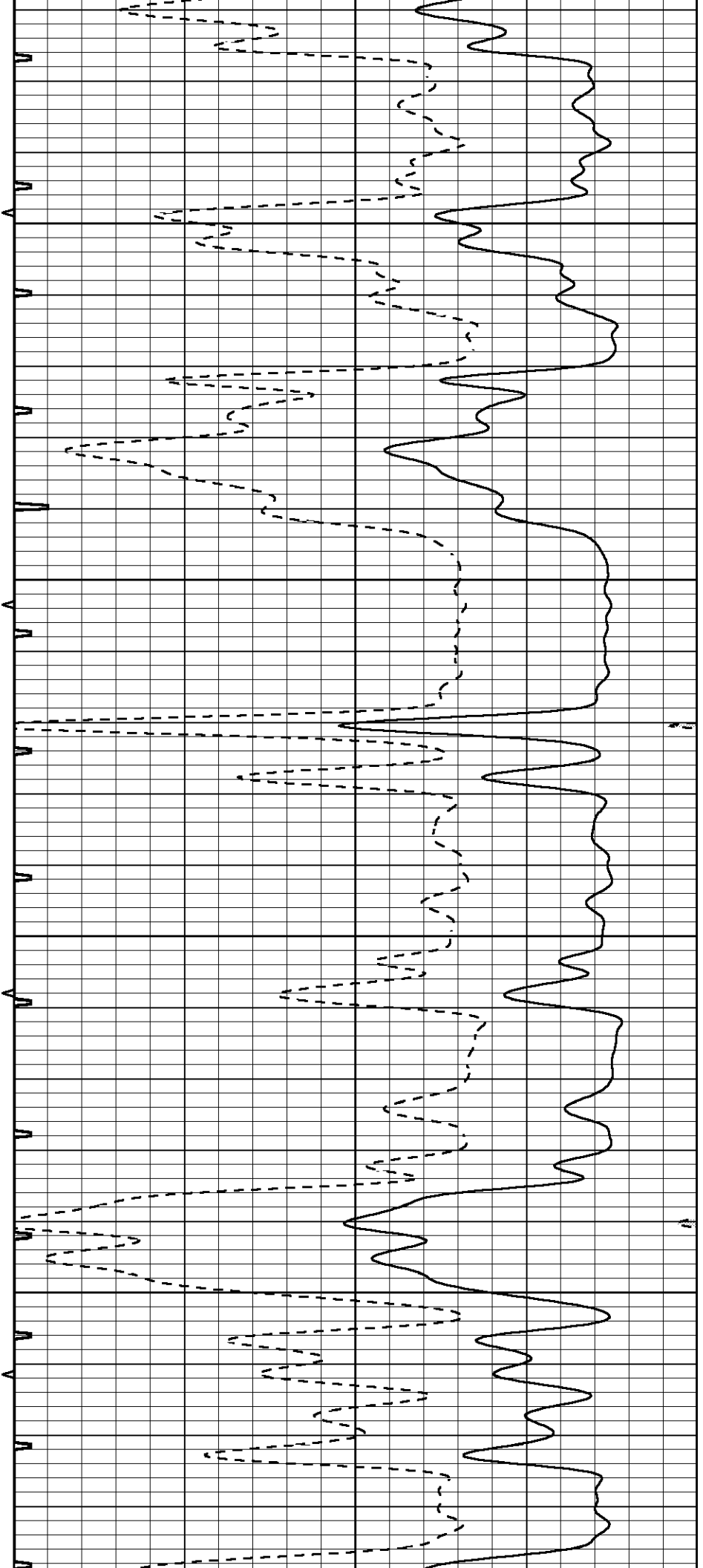


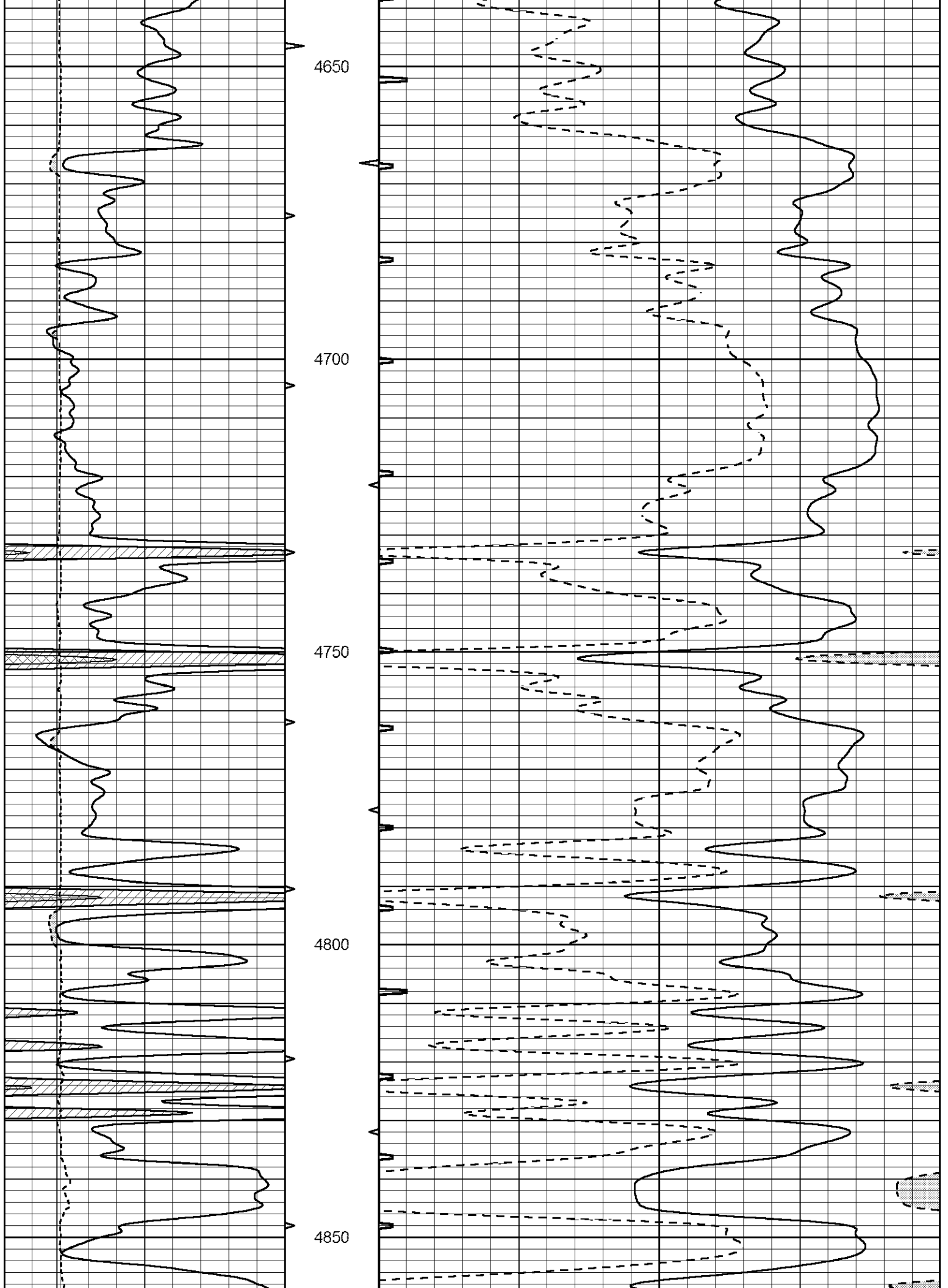
4450

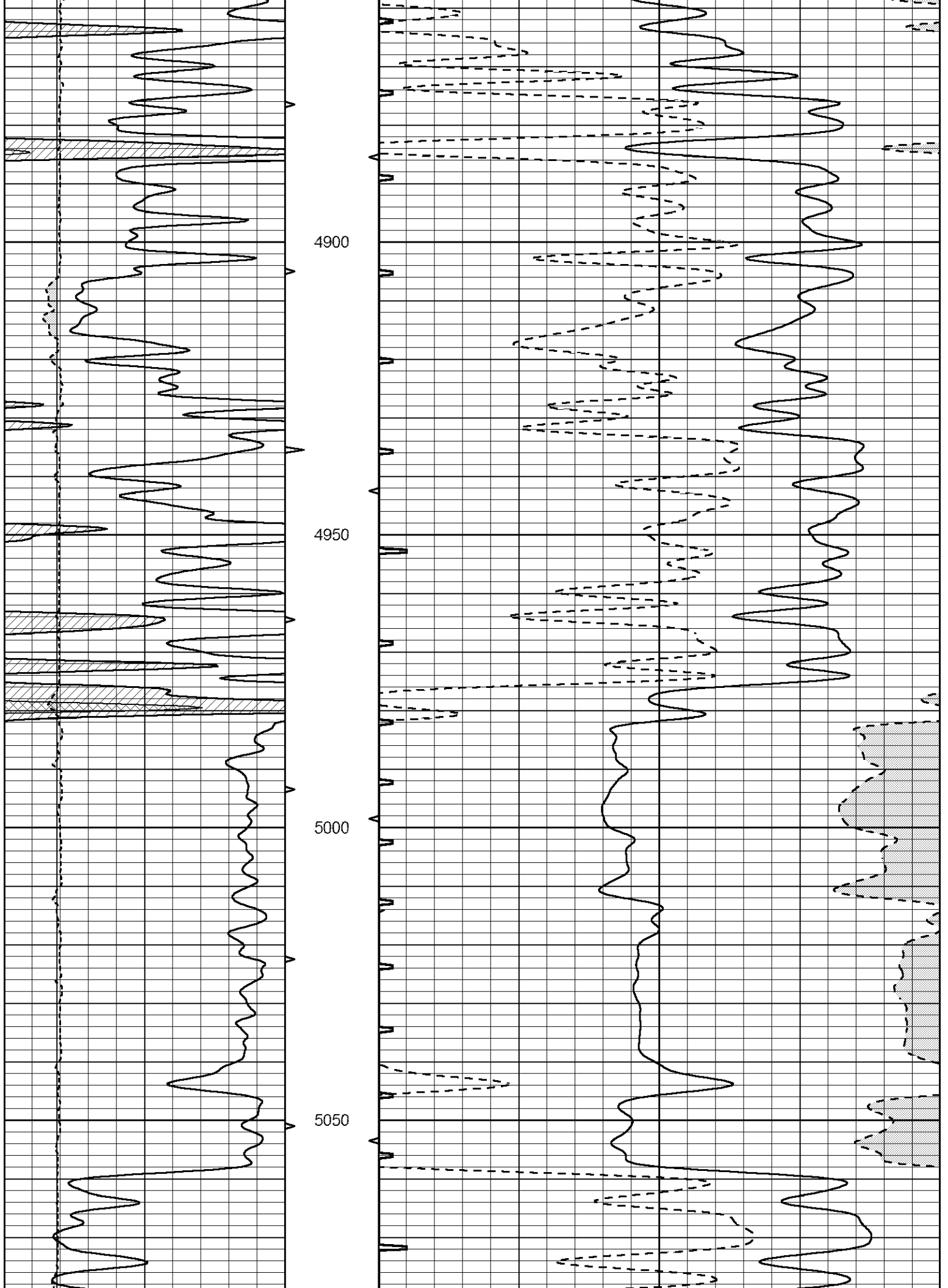
4500

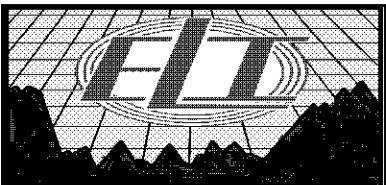
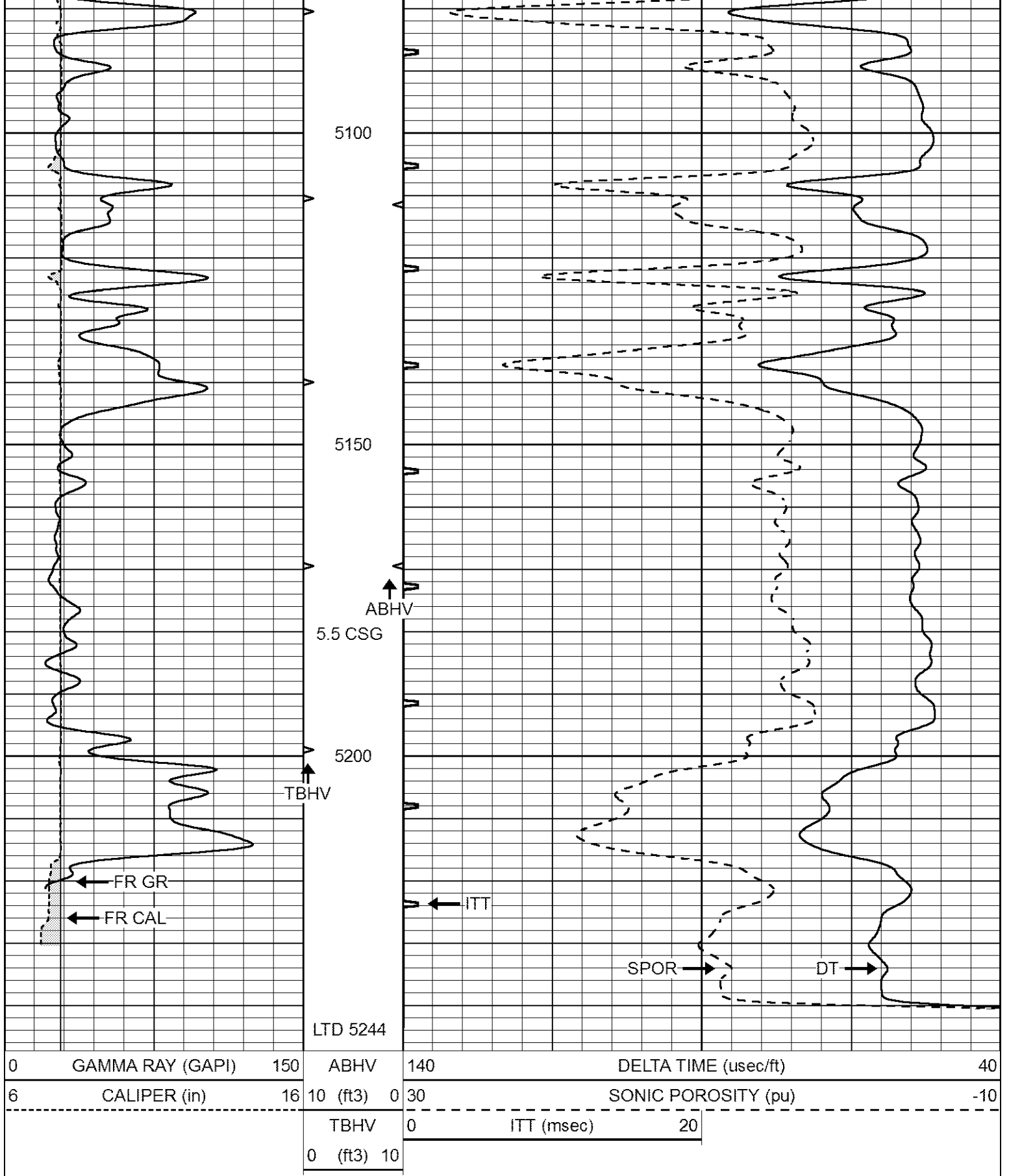
4550

4600





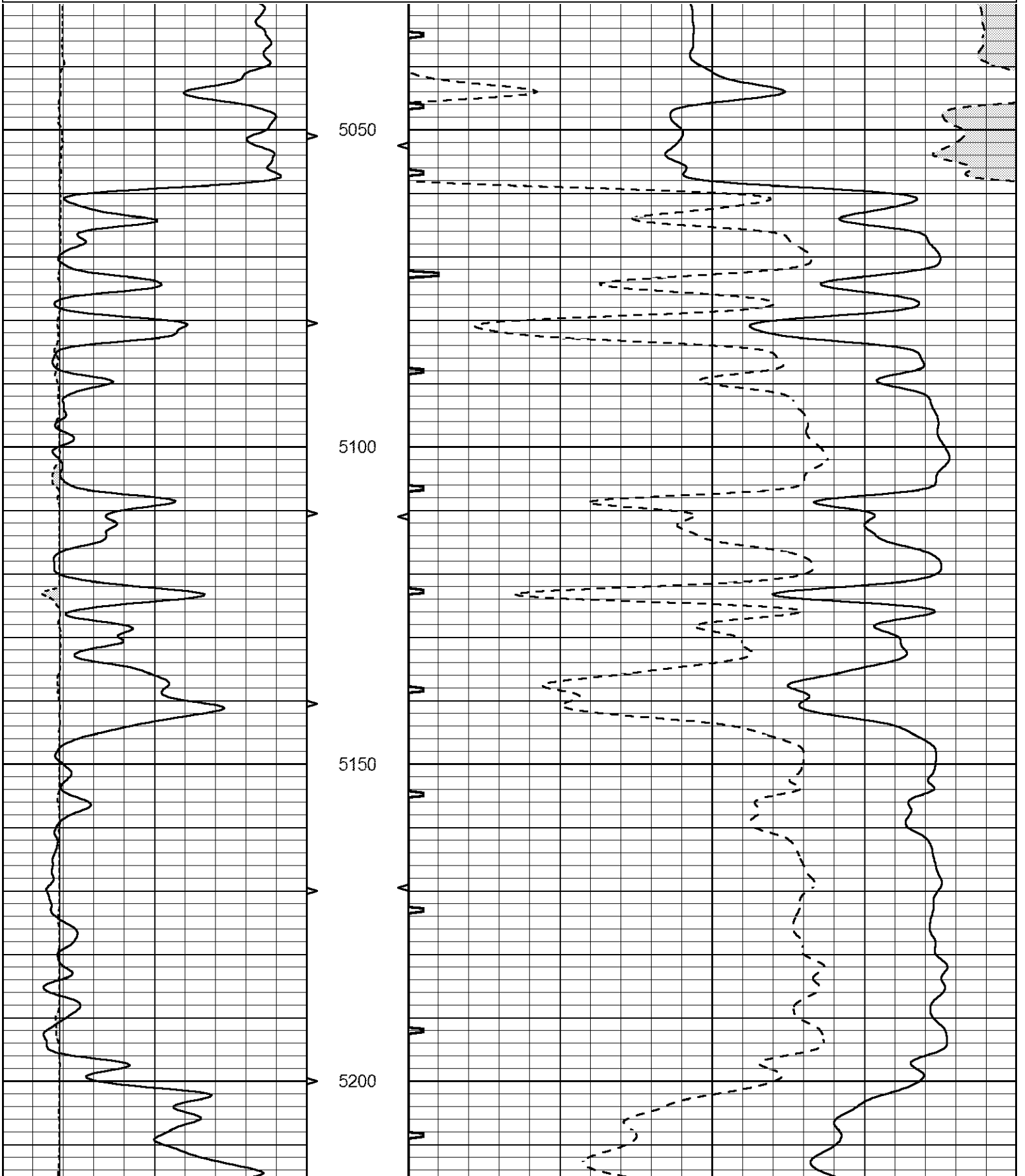


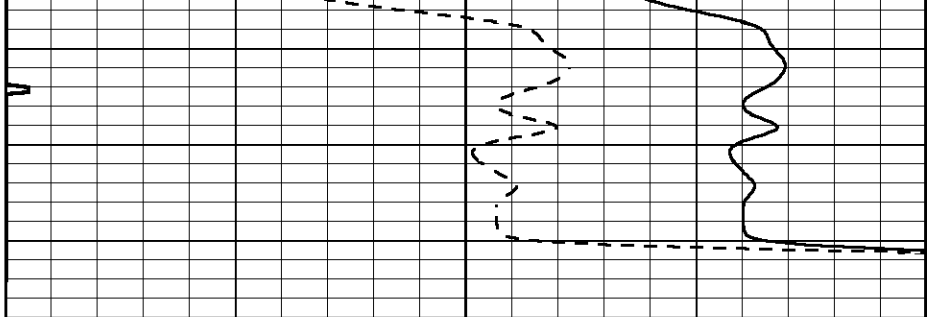
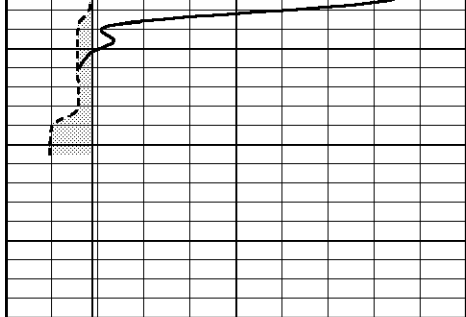


# REPEAT SECTION

Dataset Pathname pass5.1  
 Presentation Format \_sit  
 Dataset Creation Fri Feb 11 05:02:47 2022  
 Charted by Depth in Feet scaled 1:240

0	GAMMA RAY (GAPI)	150	ABHV	140	DELTA TIME (usec/ft)	40	
6	CALIPER (in)	16	10 (ft3)	0	30	SONIC POROSITY (pu)	-10
			TBHV	0	ITT (msec)	20	
			0 (ft3)	10			





0	GAMMA RAY (GAPI)	150	ABHV	140	DELTA TIME (usec/ft)	40
6	CALIPER (in)	16	10 (ft3) 0	30	SONIC POROSITY (pu)	-10
-----			TBHV	0	ITT (msec)	20
-----			0 (ft3) 10			