



MICRO LOG

Company **STELBAR OIL CORPORATION, INC.**
 Well **BPC TRUST #1-10**
 Field **UNNAMED**
 County **WALLACE** State **KANSAS**

Location: **API #: 15-199-20456-0000**
548' FSL & 343' FWL
SEC 10 TWP 14 RGE 41
 Permanent Datum **GROUND LEVEL Elevation 3761**
 Log Measured From **KELLY BUSHING 8' A.G.L**
 Drilling Measured From **KELLY BUSHING**

Other Services
CNLCDLPE
DIL/SON

Elevation
K.B. 3769
D.F. 3767
G.L. 3761

Date	2/10/22
Run Number	TWO
Depth Driller	5249
Depth Logger	5244
Bottom Logged Interval	5226
Top Log Interval	2200
Casing Driller	8 5/8" @ 556
Casing Logger	556
Bit Size	7 7/8
Type Fluid in Hole	CHEMICAL MUD
Density / Viscosity	9.0/59
PH / Fluid Loss	9.5/8.0
Source of Sample	FLOWLINE
Rm @ Meas. Temp	1.5@62F
Rmt @ Meas. Temp	1.1@62F
Rmc @ Meas. Temp	1.8@62F
Source of Rmf / Rmc	MEASUREMENT
Rm @ BHT	.73@127F
Time Circulation Stopped	2 HOURS
Time Logger on Bottom	////
Maximum Recorded Temperature	127F
Equipment Number	3802
Location	HAYS, KANSAS
Recorded By	JASON CAPPELLUCCI
Witnessed By	DAVE GOLDAK
	TJ DREILING

<<< Fold Here >>>

All interpretations are opinions based on inferences from electrical or other measurements and we cannot and do not guarantee the accuracy or correctness of any interpretation, and we shall not, except in the case of gross or willful negligence on our part, be liable or responsible for any loss, costs, damages, or expenses incurred or sustained by anyone resulting from any interpretation made by any of our officers, agents or employees. These interpretations are also subject to our general terms and conditions set out in our current Price Schedule.

Comments

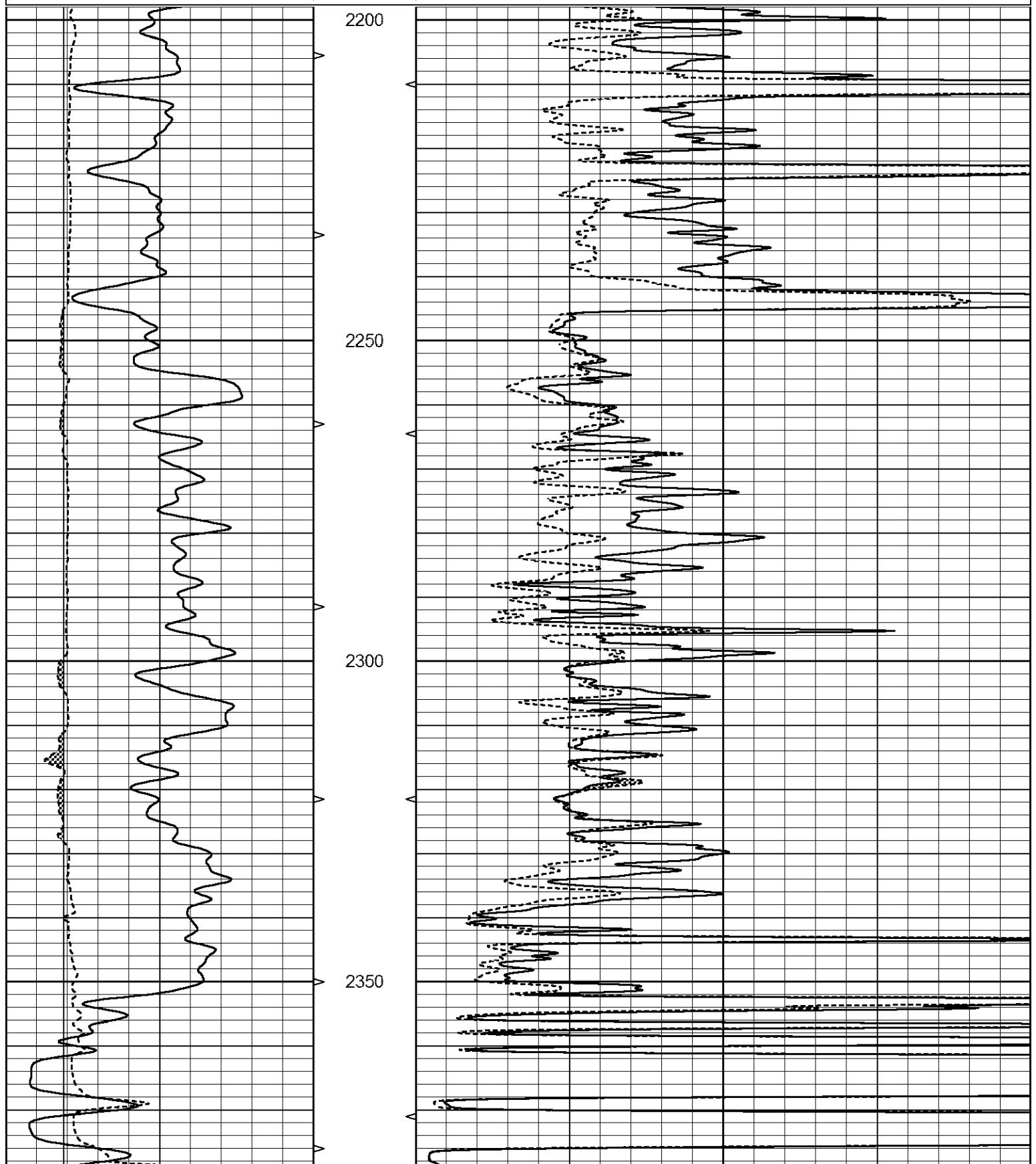
THANK YOU FOR USING ELI WIRELINE SERVICES, HAYS, KS. (785) 628-6395
DIRECTIONS
-SHARON SPRINGS KS SOUTH ON HIGHWAY 27 TO JACKRABBIT ROAD,
-WEST 7 MILES, -NORTH 2 MILES

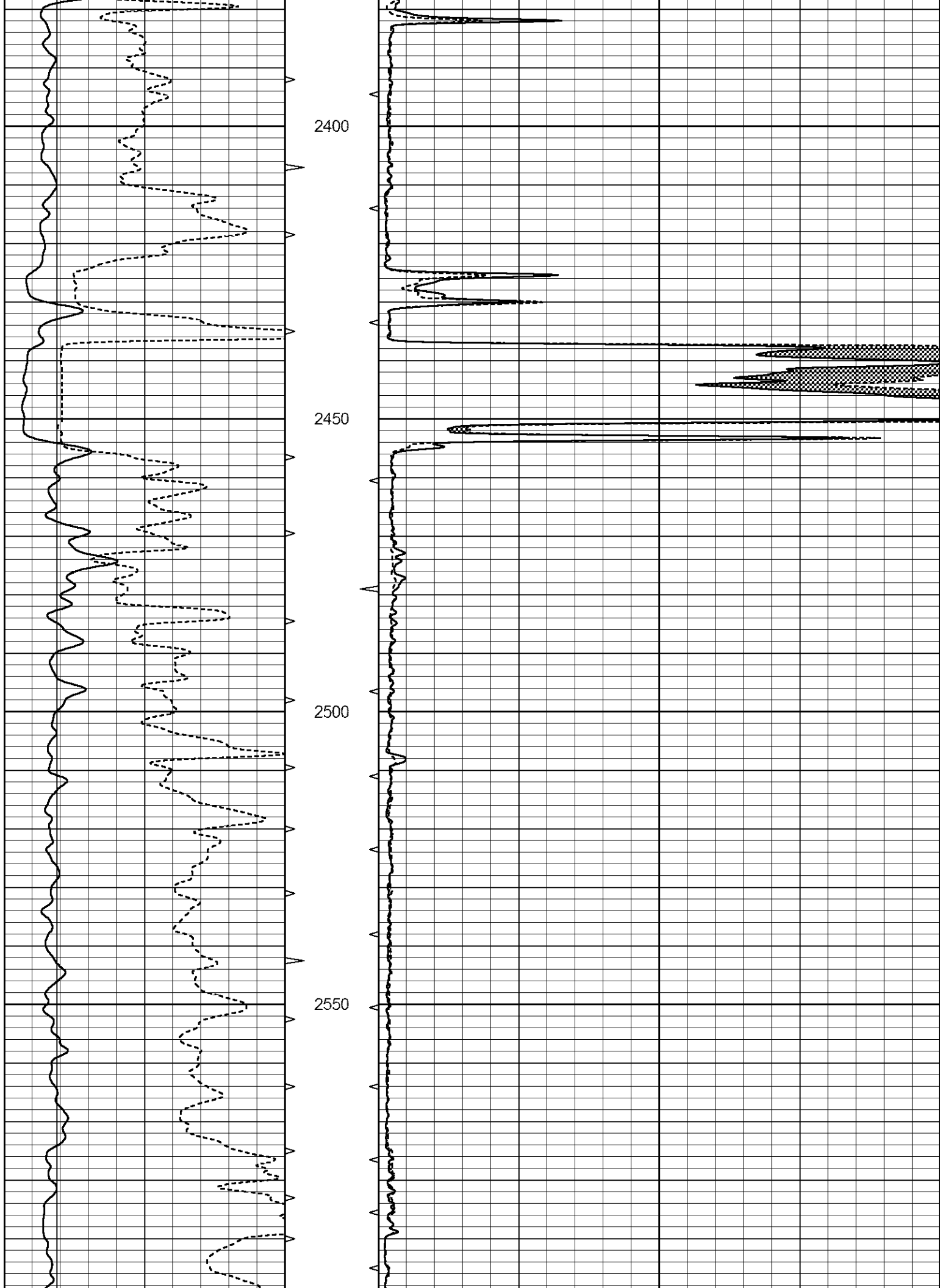


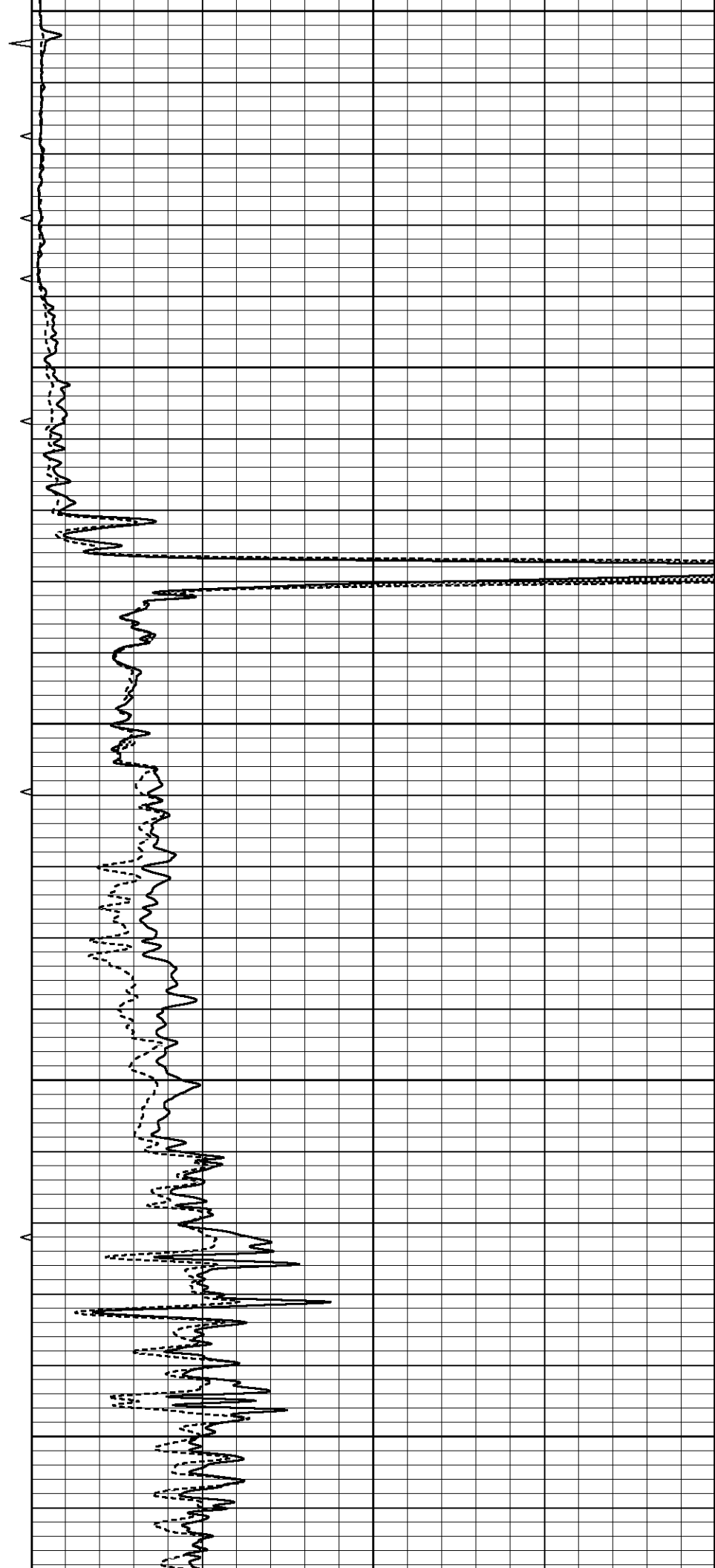
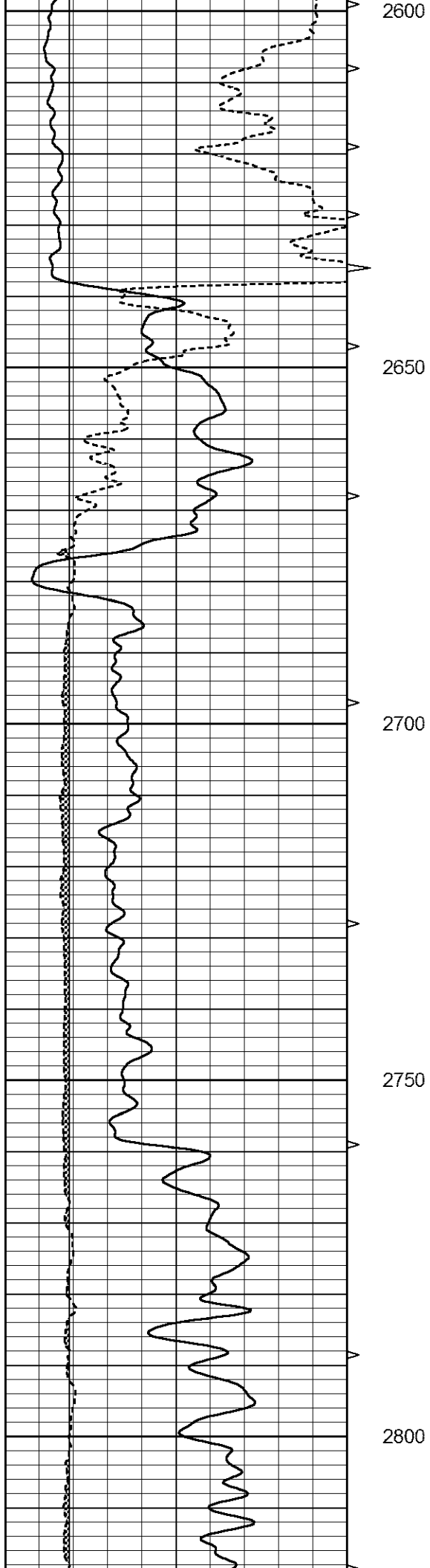
MAIN SECTION

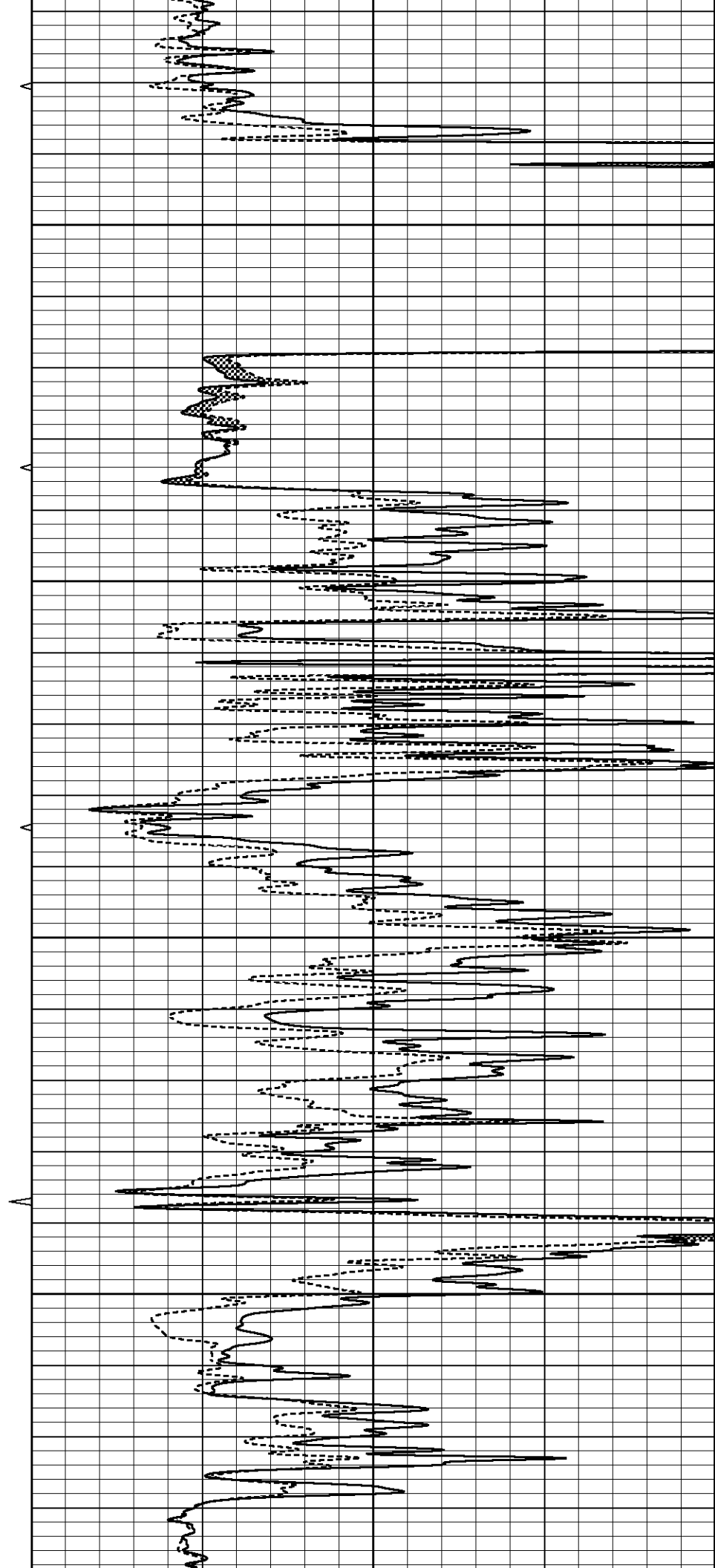
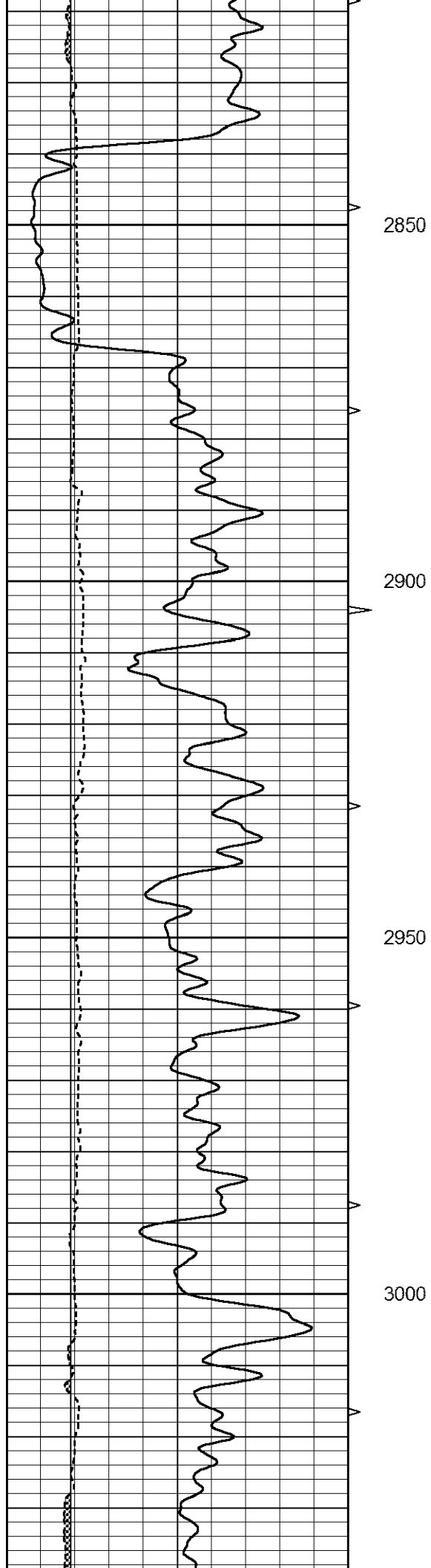
Database File 6236pe.db
 Dataset Pathname pass6.1
 Presentation Format _micro
 Dataset Creation Fri Feb 11 05:07:52 2022
 Charted by Depth in Feet scaled 1:240

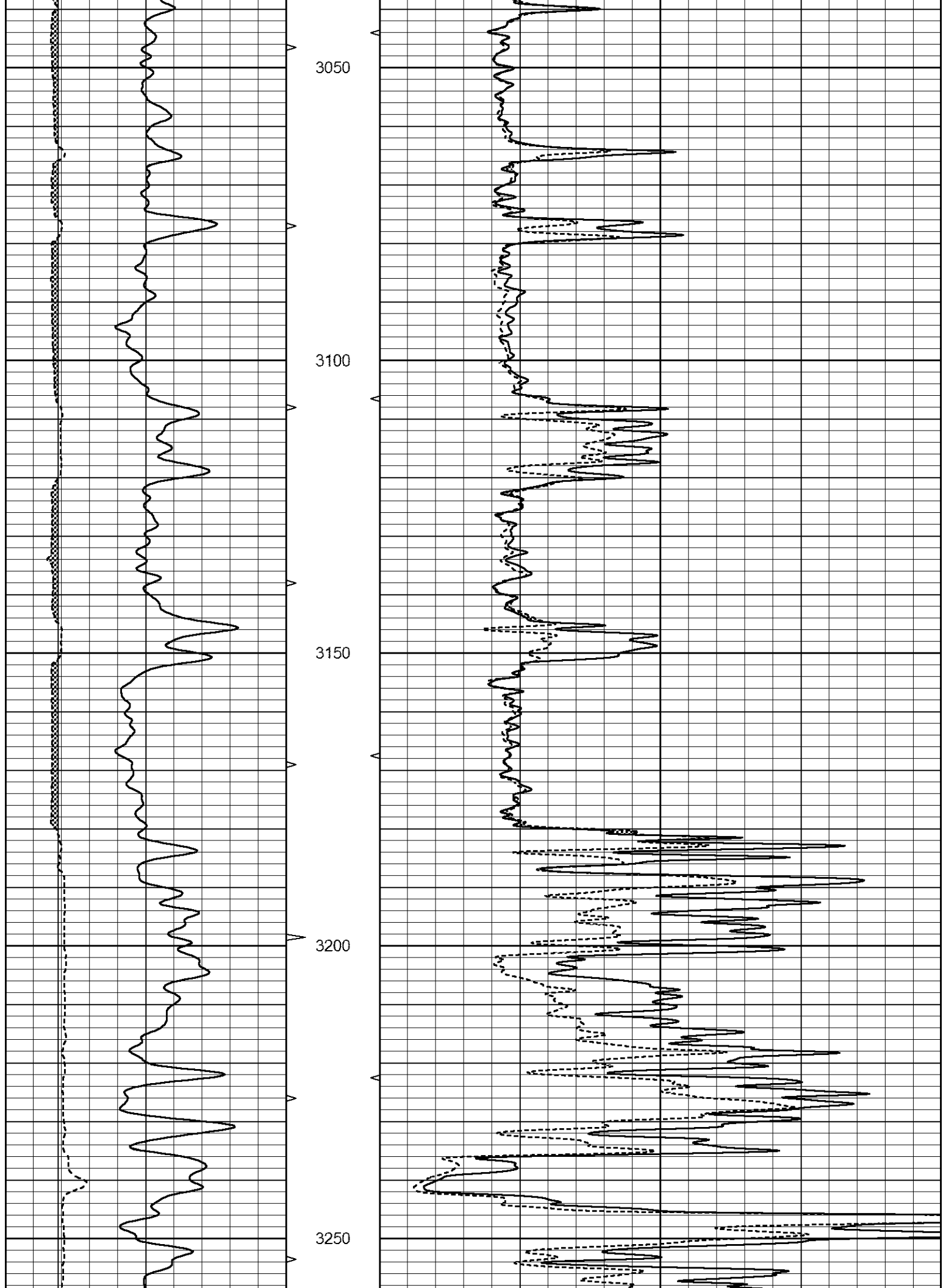
0	GAMMA RAY (GAPI)	150	ABHV	0	MEL1.5 (Ohm-m)	40
6	CALIPER (in)	16	10 (ft3)	0 0	MEL2.0 (Ohm-m)	40
			TBHV			
			0 (ft3)	10		

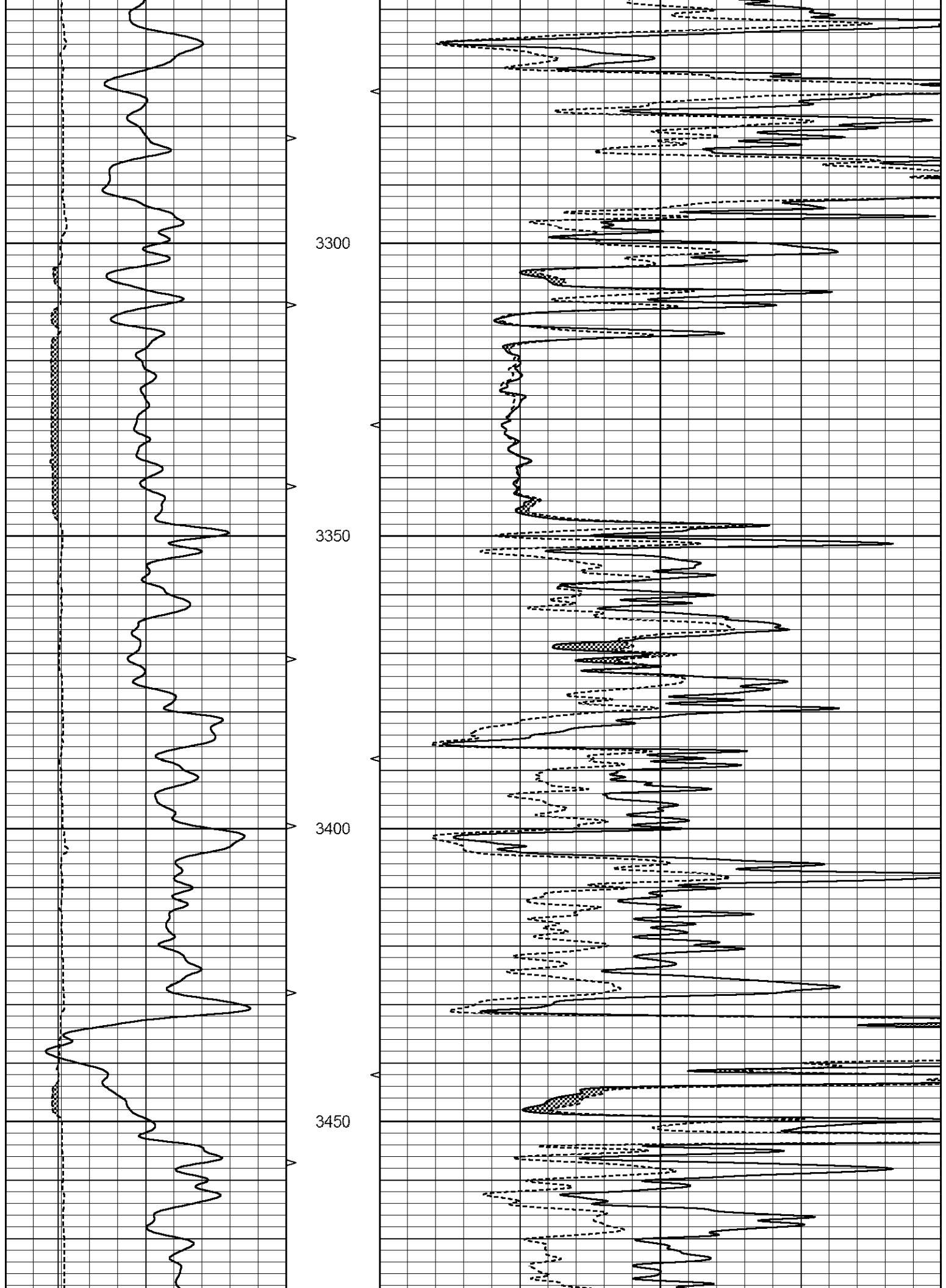


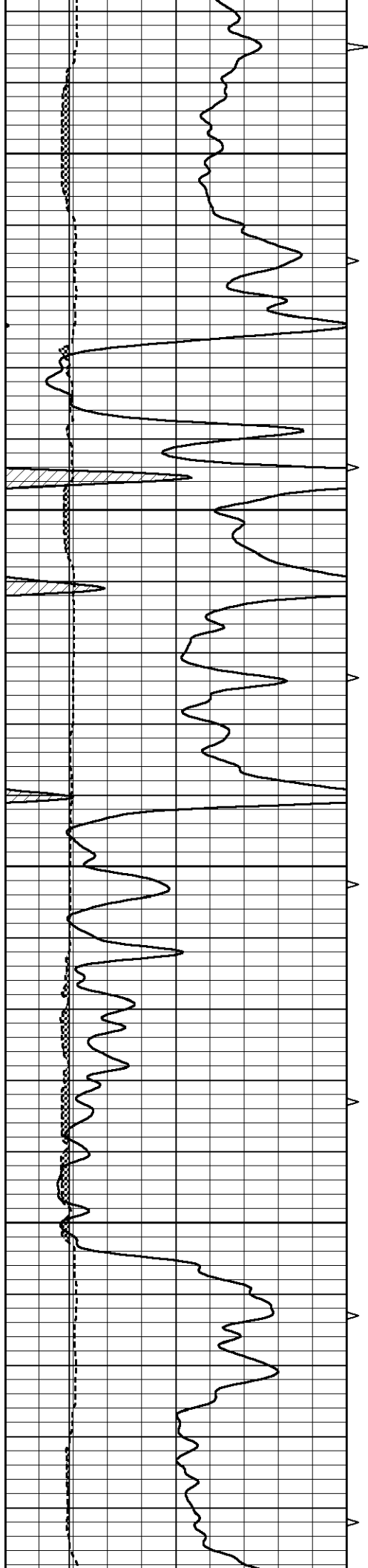










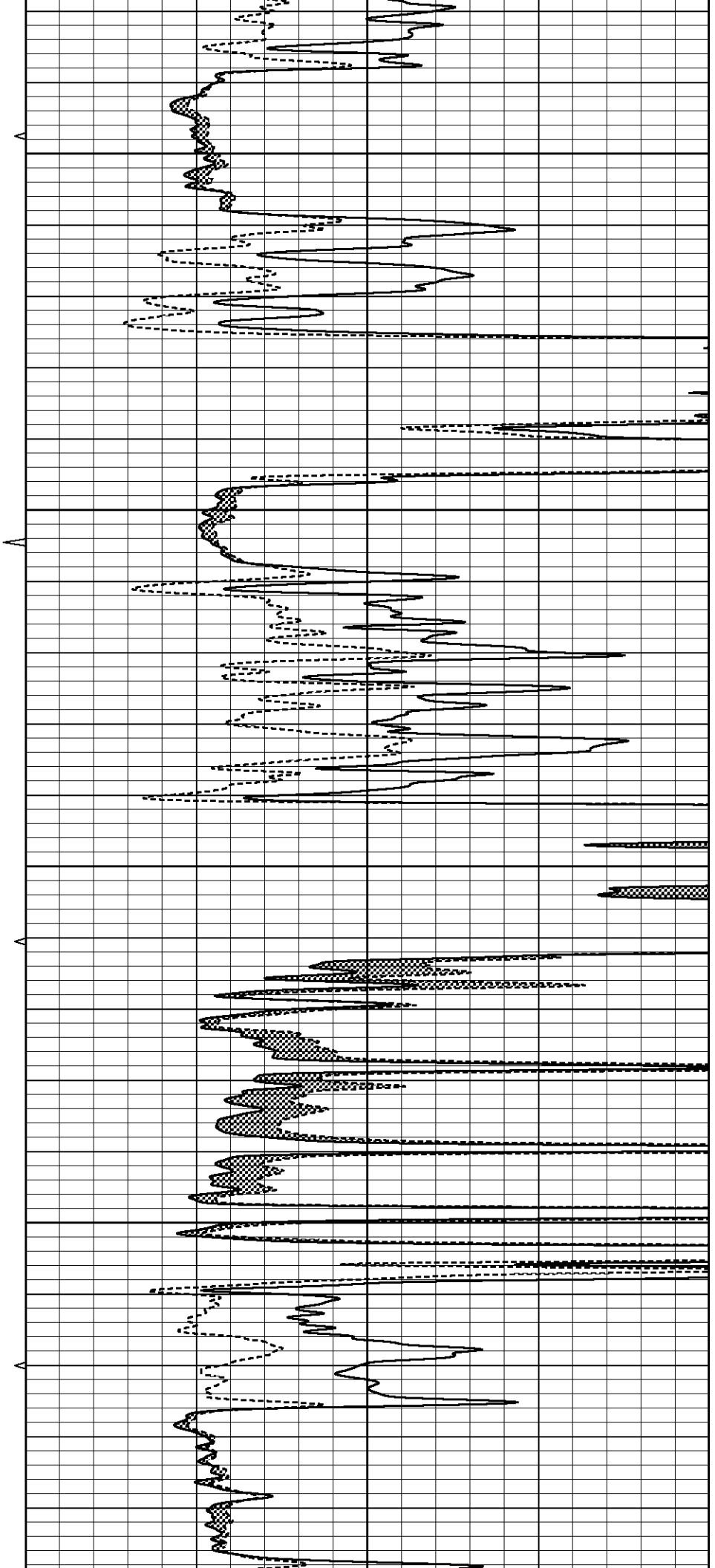


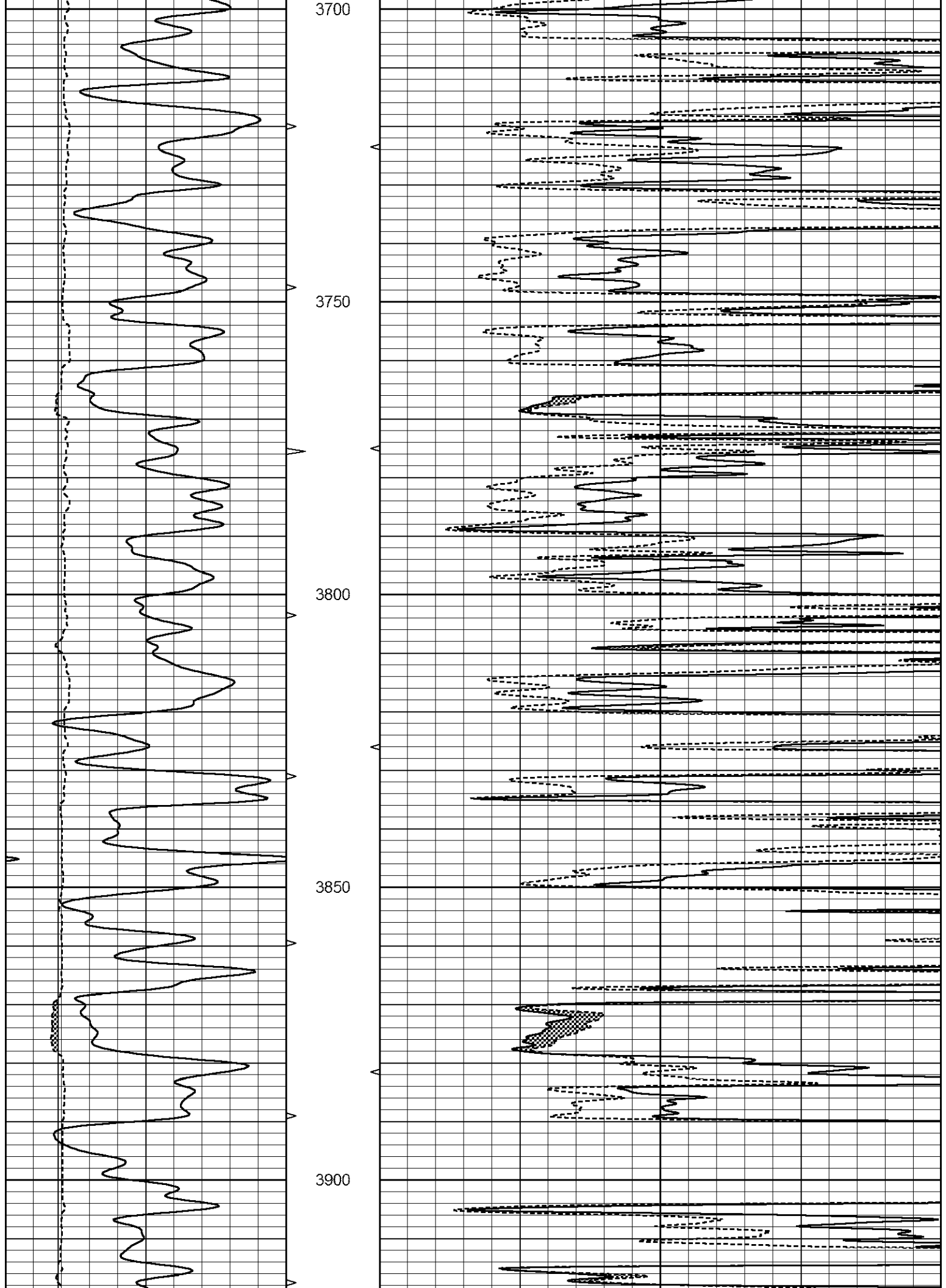
3500

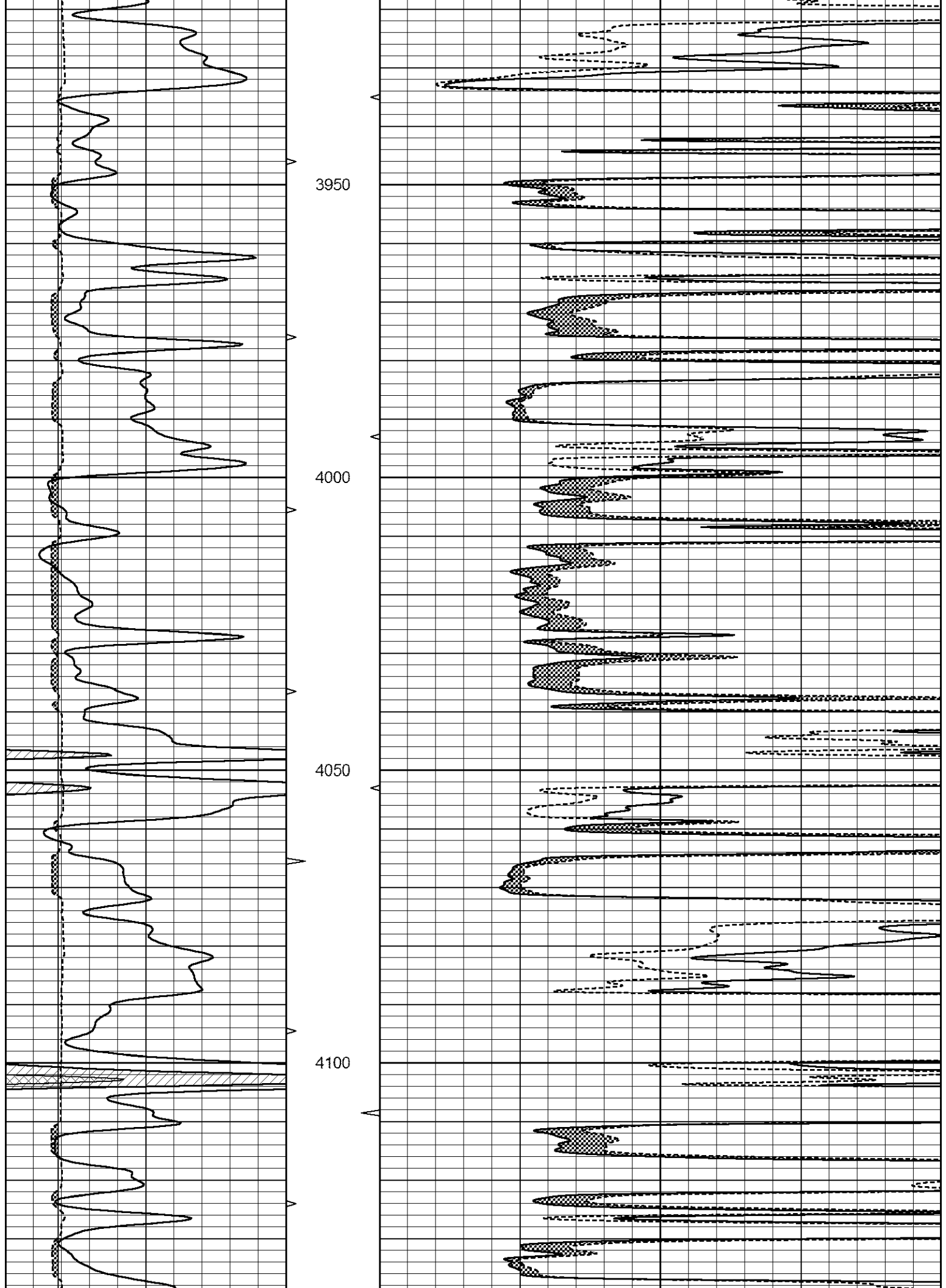
3550

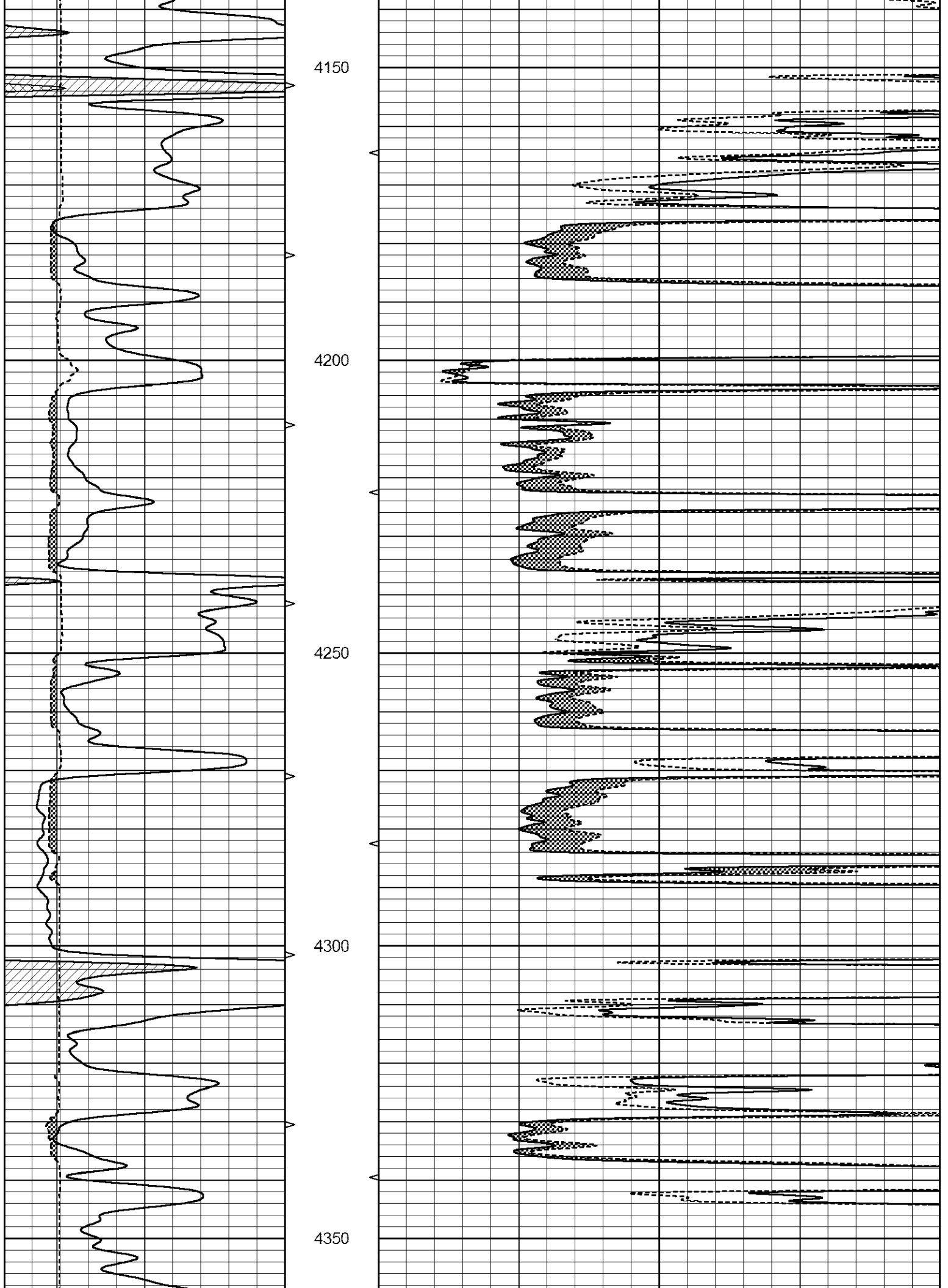
3600

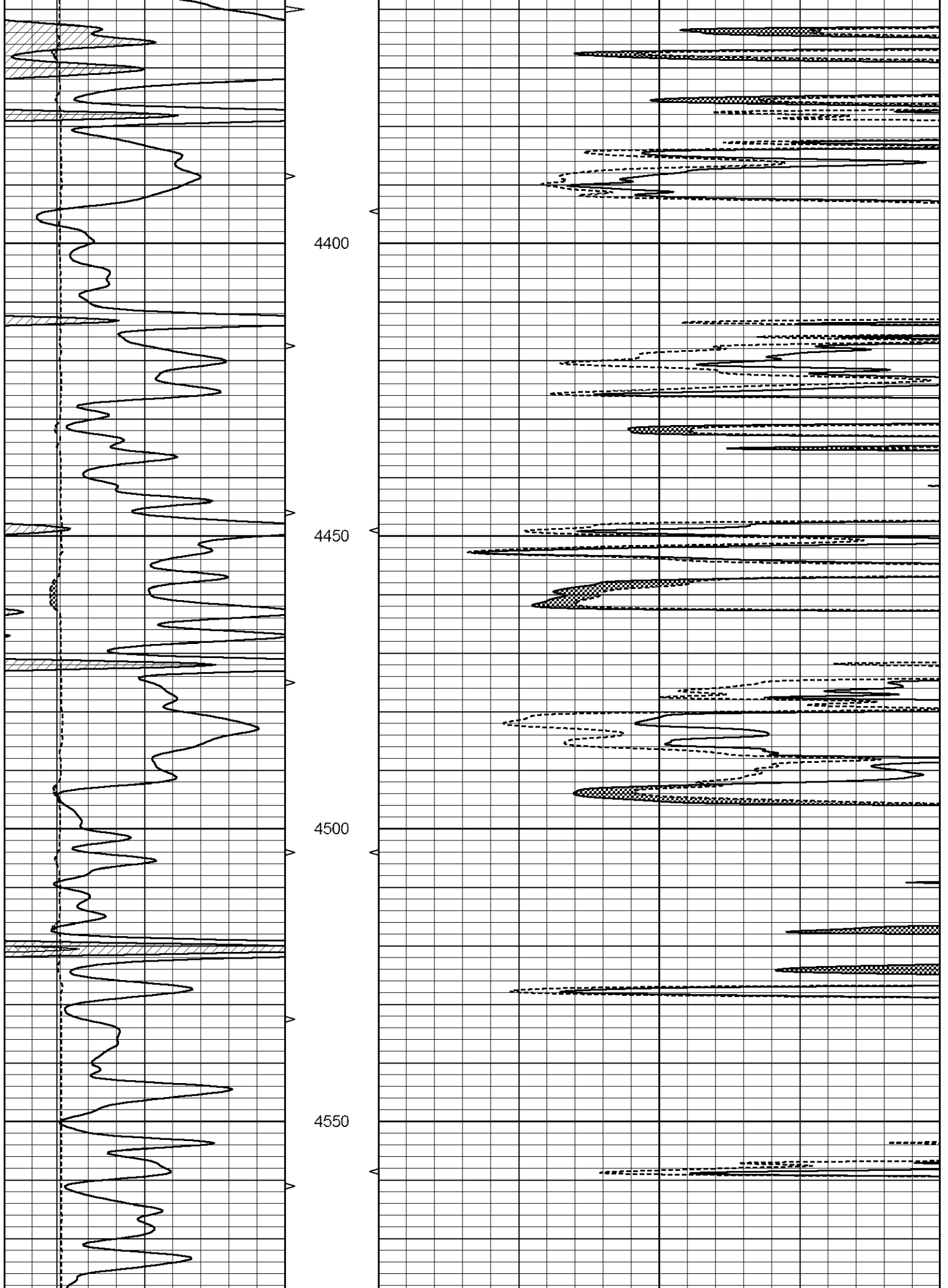
3650

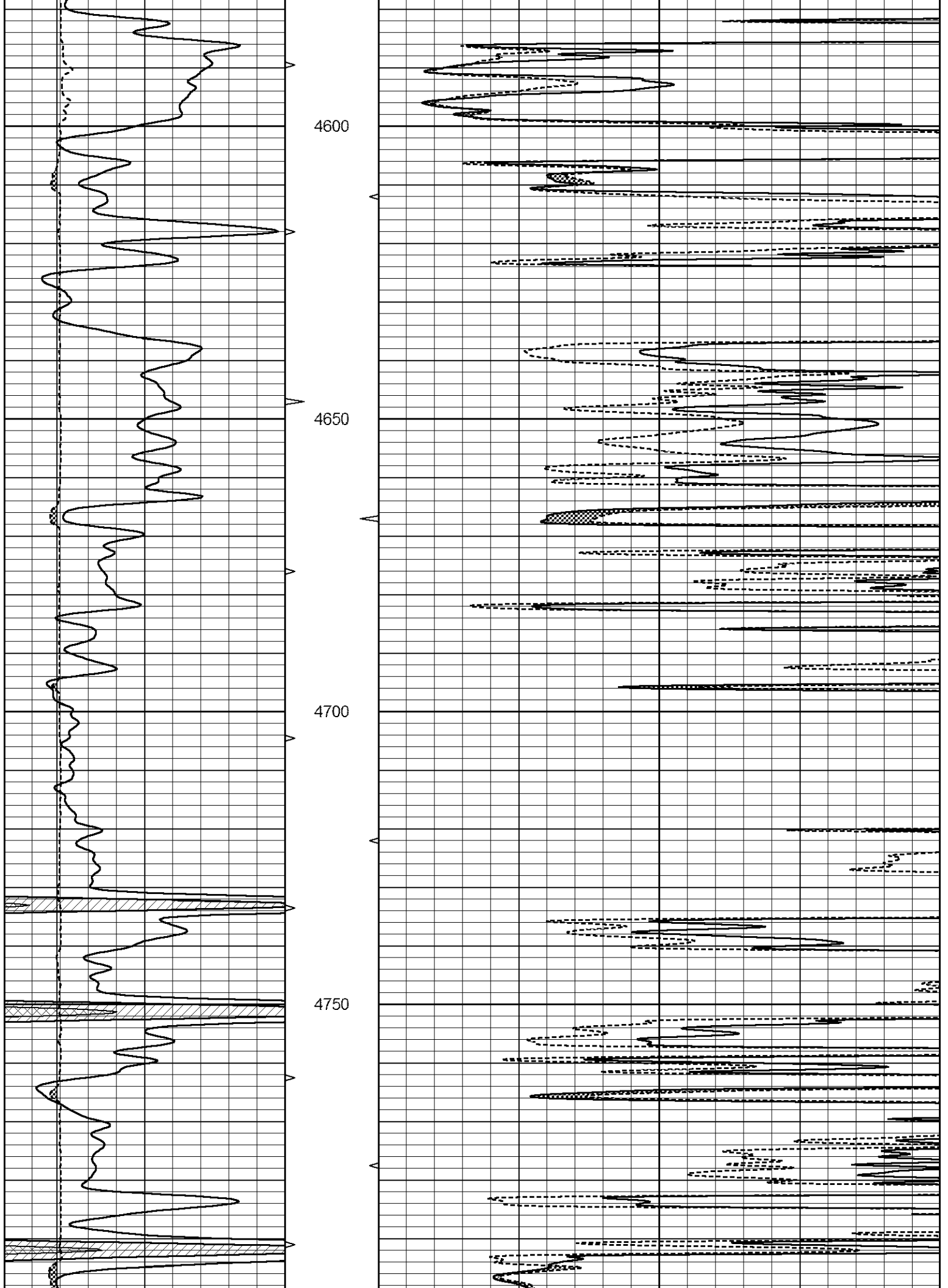


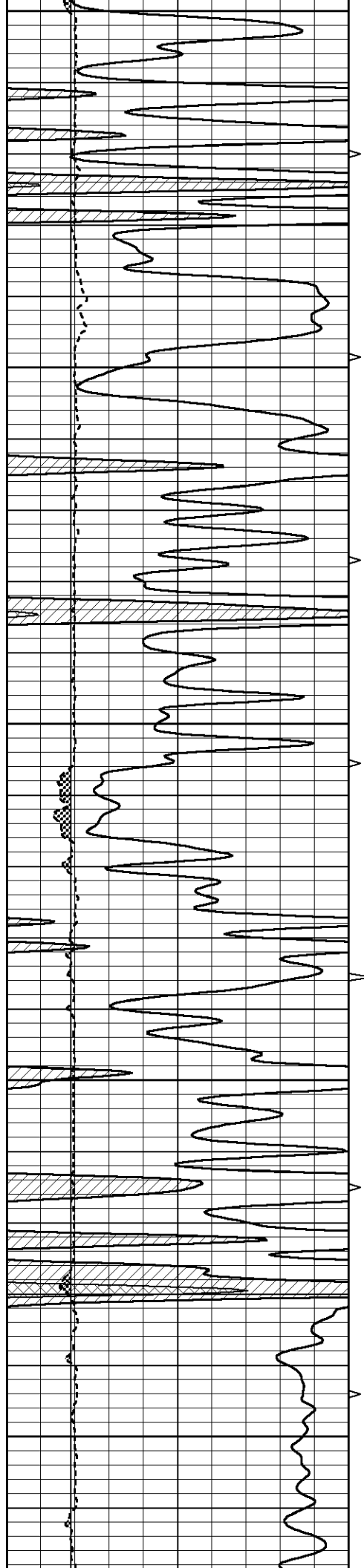












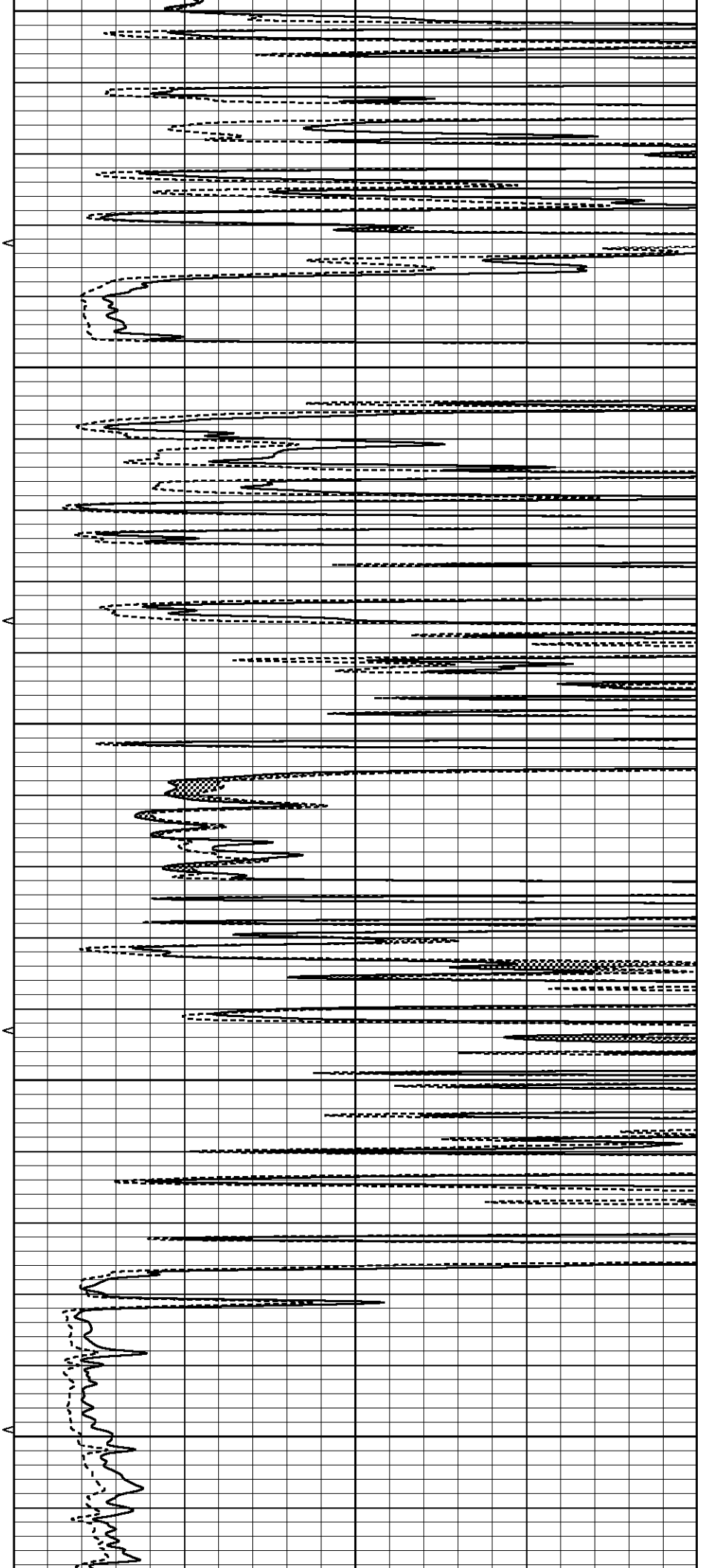
4800

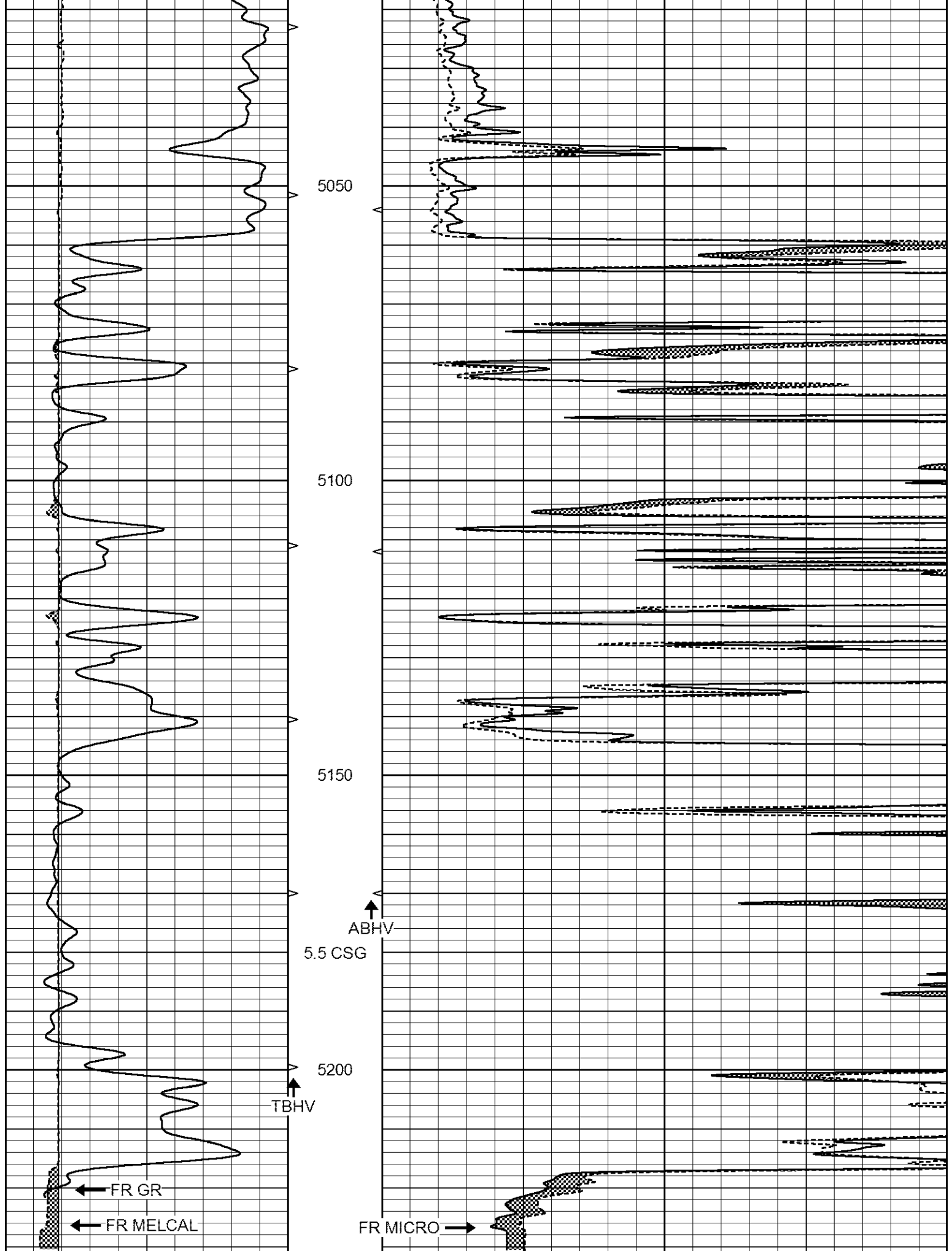
4850

4900

4950

5000





LTD 5244

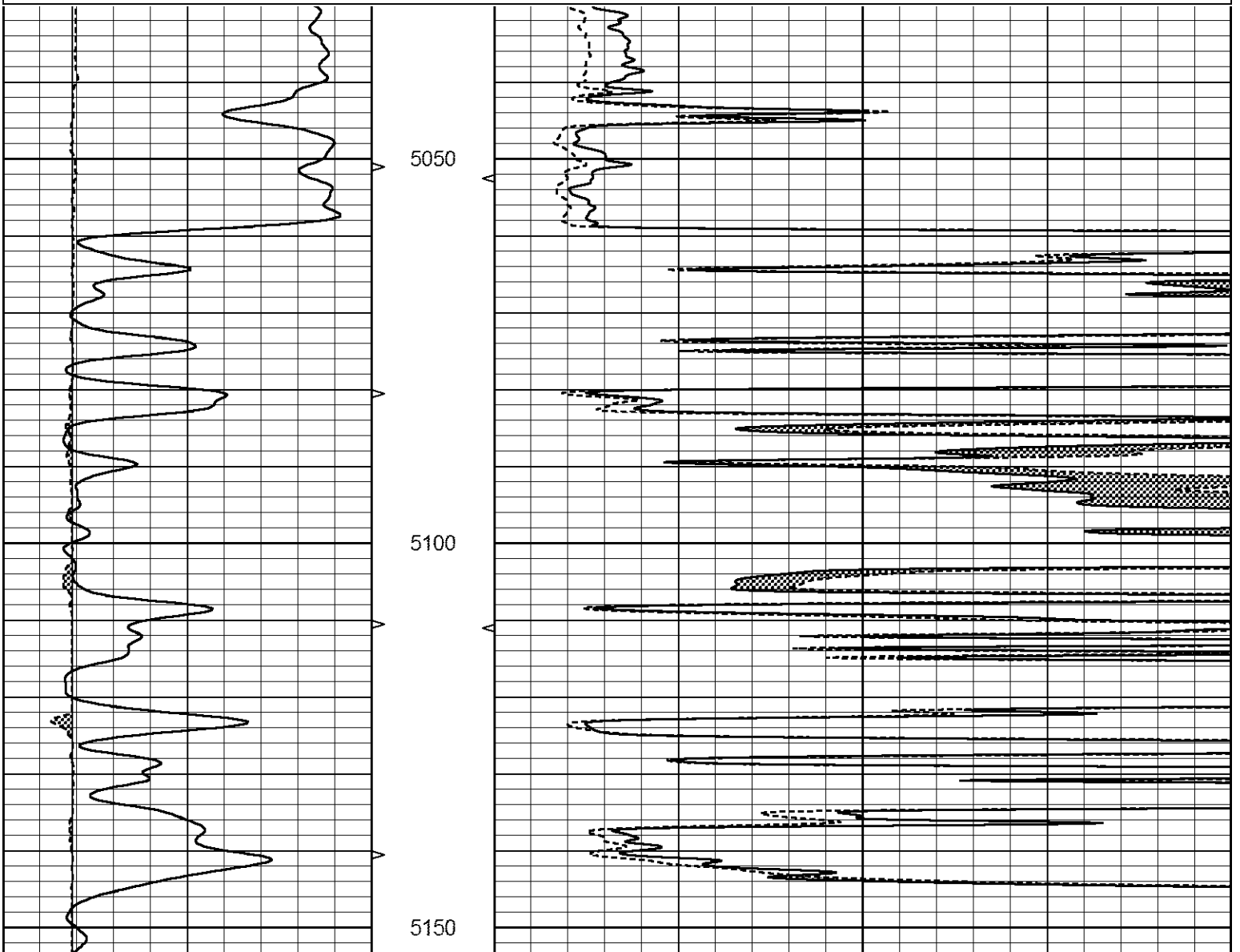
0	GAMMA RAY (GAPI)	150	ABHV	0	MEL1.5 (Ohm-m)	40
6	CALIPER (in)	16	10 (ft3)	0	MEL2.0 (Ohm-m)	40
			TBHV			
			0 (ft3)	10		

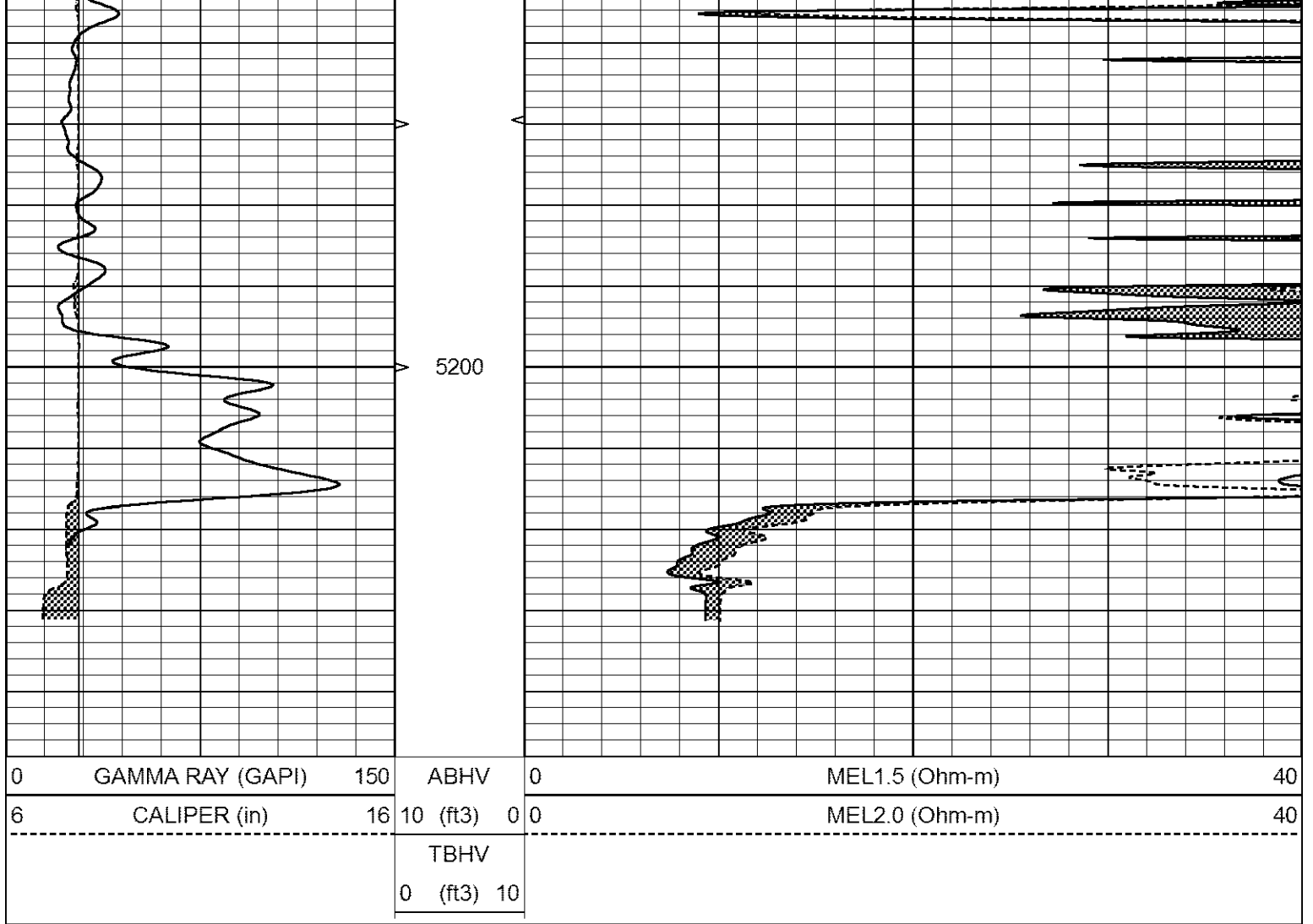


REPEAT SECTION

Database File 6236pe.db
Dataset Pathname pass5.1
Presentation Format _micro
Dataset Creation Fri Feb 11 05:02:47 2022
Charted by Depth in Feet scaled 1:240

0	GAMMA RAY (GAPI)	150	ABHV	0	MEL1.5 (Ohm-m)	40
6	CALIPER (in)	16	10 (ft3)	0	MEL2.0 (Ohm-m)	40
			TBHV			
			0 (ft3)	10		





Calibration Report

Database File 6236pe.db
 Dataset Pathname pass5.1
 Dataset Creation Fri Feb 11 05:02:47 2022

MICRO_USR Calibration Report

Serial Number:	070911	
Tool Model:	ProbeL	
Performed:	Tue Dec 21 16:59:08 2021	
Caliper Calibration:	Gain=3.755	Offset=1.950
References	Low Cal 8.000	High Cal 14.000
Readings	1.451	3.049
1.5" Calibration:	Gain=55.000	Offset=0.000
References	Low Cal 0.000	High Cal 20.000
Readings	0.004	0.843
2" Calibration:	Gain=50.000	Offset=0.000
References	Low Cal 0.000	High Cal 20.000
Readings	0.021	0.810

Microlog Calibration Report

Serial-Model:
Performed:

070911-ProbeL
Sat Apr 11 01:13:01 2015

	Readings			References			Results	
	Zero	Cal		Zero	Cal		m	b
Normal	0.0002	0.4836	V	0.0000	10.0000	Ohm-m	20.6908	-0.0051
Inverse	0.0018	0.6297	V	0.0000	10.0000	Ohm-m	15.9263	-0.0282
Caliper	0.0000	1.0000	V	0.0000	1.0000	in	1.0000	0.0000

Gamma Ray Calibration Report

Serial Number: 070558
Tool Model: Probe1
Performed: Fri Oct 30 21:32:56 2020

Calibrator Value: 1.0 GAPI

Background Reading: 0.0 cps
Calibrator Reading: 1.0 cps

Sensitivity: 0.2700 GAPI/cps